

Best of South Korea

SEOUL ● JEJU ISLAND ● BUSAN

The Offer

Discover the breathtaking beauty of South Korea on an incredible 13-day tour that seamlessly blends stunning landscapes, vibrant cities and rich traditions.

Meet us in Seoul, for a city tour to discover Gyeongbokgung Palace and witness the Royal Guard Changing Ceremony, plus a day at leisure to discover this metropolis at your own pace.

Explore the Korean Demilitarised Zone (DMZ), then travel to Seoraksan National Park. Take a cable car up to Gwongeumseong Castle for panoramic views of the mountain before visiting Sinheungsa Temple to see the famous 10-metre-high bronze statue of the Great Unification Buddha.

Next, explore Gyeongju City, known as a "museum without walls". Here you will find Seokguram grotto, Bulguksa temple and Yangdong Folk Village. Experience Hanok culture first-hand and taste 350-year-old traditional Korean rice wine at the Gyeongju Gyochon Traditional Village.

Travel to Busan to visit the stunning seaside Haedong Yonggungsa Temple and wander the vibrant, colourful alleys of Gamcheon Culture Village.

Fly to the scenic paradise of Jeju Island to discover the historic Seongeup Village and witness a captivating cultural demonstration by the legendary haenyeo (female free-divers).

This fantastic travel experience includes 12 nights of 3 & 4-star accommodation, daily breakfast and unforgettable guided experiences.

Want more? Book optional activities and add to your itinerary!

Travel Planning: Return international airfares aren't included in this package, so you have the flexibility to choose your own. See Important Information before booking.

Offer available for a limited time or until sold out. TRIP A DEAL PTY LTD: 50149240433

Updated: 22 Jun 2026 12:35:53

Have a question about this deal? We're here to help.
Call our friendly team on 1300 158 912

1

FREQUENT
FLYER

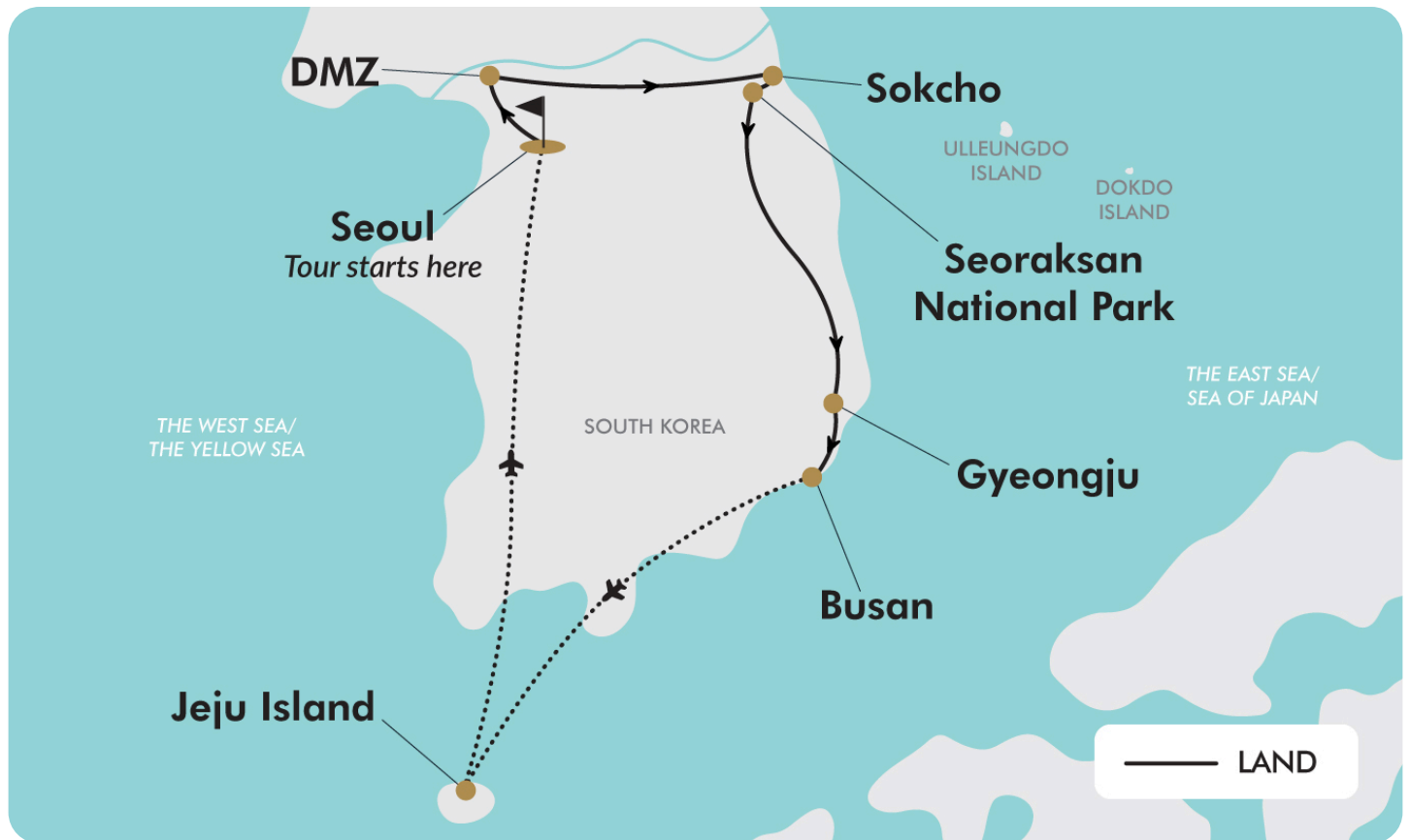


Trip
aDeal



13-DAY TOUR PACKAGE | BEST OF SOUTH KOREA

The Map



Offer available for a limited time or until sold out. TRIP A DEAL PTY LTD: 50149240433

Updated: 22 Jun 2026 12:35:53

Have a question about this deal? We're here to help.
Call our friendly team on 1300 158 912



13-DAY TOUR PACKAGE | BEST OF SOUTH KOREA

The Itinerary

Day 1 Meet us in Seoul, South Korea

Meet us in Seoul, make your own way to your hotel accommodation.

Please note:

- *Standard check-in time is 15:00, and for travellers who arrive early, luggage storage will be available at reception.*

Overnight: Ibis Ambassador Hotel or similar, Insadong, Seoul

Meals included: None

Day 2 Seoul - City Tour

This morning, you'll begin your Seoul city tour at the beautiful Gyeongbokgung Palace where you can experience the most representative edifices of the Joseon Dynasty which is more than 500 years old. Afterwards, visit the National Folk Museum to learn about Korea's unique culture and how Koreans used to live in the olden days. You'll then enjoy a quick stop to witness the Traditional Royal Guard Changing Ceremony and the Presidential Blue House before arriving at the famous Bukchon Hanok Village.

This is a traditional Korean village in Seoul that's located on the top of a hill between Gyeongbok Palace, Changdeok Palace and Jongmyo Royal Shrine. With a long history, this village is composed of many alleys and hanoks which are preserved to show a 600-year-old urban environment. Take part in a guided walk and marvel at the beautiful traditional homes.

You'll then finish the day with some time at leisure in the Dongdaemun open market which is the largest open market in the Orient. This is a large commercial district of traditional markets and shopping centres that cover the entire area around Dongdaemun Gate, a prominent landmark in Korea. It's Korea's

largest wholesale and retail shopping district featuring 26 shopping malls, 30,000 specialty shops and 50,000 manufacturers. Afterwards, you'll return to your accommodation where you can enjoy the remainder of the day at leisure.

Please note:

- *Gyeongbokgung Palace and the National Folk Museum are closed every Tuesday. Alternatively, you will visit Changdeokgung Palace instead.*
- *Due to recent local government regulations aimed at protecting resident privacy and maintaining order, Bukchon Hanok Village has been temporarily closed for groups. If the village is closed for your tour, an alternative visit to Namsangol Hanok Village will be provided in place of this.*

Overnight: Ibis Ambassador Hotel or similar, Insadong, Seoul

Meals included: Breakfast

Day 3 Seoul - Day at Leisure

Today is a day to explore Seoul at leisure or participate in an optional tour.

Optional Activity: Full-Day Seoul Sightseeing Tour

Today you'll head out for a full day of sightseeing in Seoul where you'll visit the below locations with your guide and enjoy both guided commentary and time at leisure to explore each location.

- *Gwangjang Market - As one of Korea's oldest and largest traditional markets, this bustling landmark is a must-visit for food lovers and culture seekers alike. It is world-renowned for its vibrant street food "meokjagolmok" (food alley), where you can sample iconic dishes like *mayak kimbap* and *crispy bindae-tteok* (mung bean pancakes)*



13-DAY TOUR PACKAGE | BEST OF SOUTH KOREA

The Itinerary

(not included, additional cost). Beyond the food, the second floor houses a sprawling vintage clothing market and a vast selection of high-quality traditional textiles and silks.

- *Starfield COEX Mall - World-renowned architectural firm, Gensler, worked to create a vision for change largely centred around the concept of "The Unfolding Sky." With five uniquely-themed squares, the new Coex Mall was designed to receive optimal amounts of natural light and to optimise the flow of foot traffic. Coex Mall is a shopping mecca for global brands in fashion, accessories, beauty, lifestyle and more. It also has a large movie theatre complex and a wide variety of fine dining.*
- *Bongeunsa Temple - Once known as Gyeongseongsa Temple, Bongeunsa Temple is an impressive temple located north of COEX that was constructed in the 10th year of Silla King Weongseong's reign in 794. In 1498, Queen Jeonghyeon refurbished Gyeongseongsa Temple and renamed it, Bongeunsa Temple.*
- *Lotte World Tower - With 123 floors total, the Lotte World Tower is the fifth tallest building in the world, standing at 555 metres. The tower contains galleries, cafes, shops and a luxury hotel, in addition to a skywalk and observation deck which is one of the best spots to appreciate the breathtaking view of Seoul's vibrant city lights. Please note: The entrance fee for the skywalk and observation deck are not included.*
- *Itaewon, Special Tourist Zone - Itaewon was the first special tourist zone in Seoul, designated in 1997. It is a multicultural, go-to place for both shopping and entertainment as you'll find the streets crowded with about 2,000 shops selling clothes and bags, restaurants, entertainment facilities, hotels and travel agencies. Famous in the district is the 'Antique Furniture Street' where more than 100 shops selling furniture and antiques stretch from*

Hamilton Hotel toward Bogwang-ro. On 'World Food Street', you can taste authentic cuisine and experience culture from around the globe with more than 40 restaurants operated by foreigners.

Please see current pricing in Important Information.

Overnight: Ibis Ambassador Hotel or similar, Insadong, Seoul
Meals included: Breakfast

Day 4 Seoul - Korea Demilitarized Zone - Sokcho

Nowhere is the tension between North and South Korea more palpable than in the no-man's-land known as the Korean Demilitarized Zone, or DMZ. Located on each side of the 38th parallel, this infamous border was established at the end of the war in 1953 at the signing of Panmunjom's armistice to separate North and South Korea.

This morning you'll head towards the North Korean border where you'll take the gondola for a perfect bird eye view of the Demilitarized Zone. Then, visit Dokgae Bridge which symbolises the pains of war and separation. The skywalk experience will be divided into three themes: past, present, and future.

Proceed to Bunker Beat 131, a military underground bunker constructed during the Korean War and turned into a unique exhibition space. From the entrance, you can feel the atmosphere of a military facility. Walking down the stairway, you will see the situation room of the command during wartime.

Afterwards, you will head through passport security control and visit the Odusan Unification Observatory (closed every Monday) on the South Korean Side of the 38th parallel. After receiving a



13-DAY TOUR PACKAGE | BEST OF SOUTH KOREA

The Itinerary

brief and listening to the precautions, you can watch a 3D film about the war, and then we can vividly see the North Korean villages, people working, and their daily lives.

The tower gives a view of North Korea at a glance and is a special place to experience the division of a nation and the life of North Korean people. You can see the North Korean territory using binoculars from the 28 square metres, 500-person capacity observatory. There's also an exhibition hall with displays on the conflict.

Then, you will enjoy the Imjingak Resort, which has various war-related artefacts and boasts the spacious Pyeonghwa Nuri Park. The resort preserves the Freedom Bridge and Imjingang rail bridge from the Korean War to remind people of the past, along with a Memorial Hall, memorial monuments, the Bell of Unification Last Train Out, The Bridge of No Return and other recreational areas.

After an approximately 300-kilometre travel day, you'll transfer to the port city of Sokcho on the east coast of Korea, which sits in the shadow of Mount Seoraksan, and check into your accommodation.

Please note:

- For 2026 departures, lunch will be included.
- You must bring your passport for ID checks.
- The Odusan Unification Observatory is closed every Monday, so it will be replaced by the Imjingak Peace Observatory.
- The tour may be cancelled without notice in case of an emergency military meeting or other critical situation.

Overnight: Ramada by Wyndham Gangwon Sokcho or similar, Sokcho

Meals included: Breakfast

Day 5 Full-Day Seoraksan National Park Tour

Today you'll head out for a full-day tour of Mount Seoraksan National Park. Along with breathtaking views, this is home to over 2,000 animal species and more than 1,400 rare plant species which is why UNESCO designated this national park a Biosphere Preservation District in 1982 and it has since become the most famous national park in Korea. On arrival, you'll take a cable car up to Gwongeumseong Castle for panoramic views of the mountain before visiting Sinheungsa temple where you'll see the famous 10-metre-high bronze statue of the Great Unification Buddha. Enjoy a few guided walks to various points of interest and viewpoints before returning to nearby Sokcho.

On the way back, you'll visit the bustling Daepohang Port which is one of the most popular tourist spots for those in search of the freshest raw fish restaurants. Here you will have time at leisure to explore before returning to the hotel for an evening at leisure.

Overnight: Ramada by Wyndham Gangwon Sokcho or similar, Sokcho

Meals included: Breakfast



13-DAY TOUR PACKAGE | BEST OF SOUTH KOREA

The Itinerary

Day 6 Sokcho - Gyeongju

This morning, you will transfer to the century-old historical Gyeongju City which is the 1,000-year-old capital of the Silla Dynasty. Silla, alternatively Shilla, was a Korean kingdom that existed between 57 BCE – 935 CE and was located on the southern and central parts of the Korean Peninsula. Gyeongju is often known as the museum without walls which is why the Gyeongju historic areas were designated a UNESCO World Heritage Site in 2000. Among such historical treasures, you will find the Seokguram grotto, Bulguksa Temple and Yangdong Folk Village.

You'll take part in a city tour from Bulguksa temple, also known as "The Buddhist Country Temple", which was designated a UNESCO World Heritage Site in 1995. Afterwards, you'll visit the Chomsongdae Observatory and Daereungwon, also known as Tumuli Park, which has more than 20 royal tombs from the Silla Period. Stop by the Gyeongju National Museum, the millennial capital of Silla, which is one of the most prominent museums in Korea that sheds light on the cultural heritage of Silla, before finishing the day at your hotel for an evening at leisure after an approximately 330-kilometre day.

Overnight: Commodore Hotel Gyeongju or similar, Gyeongju
Meals included: Breakfast

Day 7 Gyeongju - Busan

After checking out of the hotel this morning, you'll visit Gyeongju Gyocheon Traditional Village. This is a hanok village that allows visitors to take a look inside the lifestyle of the Choi Clan, a family known to have remained wealthy for the longest period in Korean history. Here you will see the House of the Gyeongju Choi Clan and try some traditional Gyeongju Gyodong Beopju Liquor.

Afterwards, you'll transfer to nearby Busan, the hub of Asia which is often referred to as the "Summer Capital of South Korea". It's a vibrant and diverse travel destination in the southeastern part of the Korean Peninsula and is the second-largest city in South Korea offering a unique blend of modernity, tradition and natural beauty. Arrive at your hotel, located in the heart of the city, where you will check in and enjoy the remainder of the day at leisure after an approximately 100-kilometre travel day.

Overnight: Asti Hotel Busan or similar, Busan
Meals included: Breakfast



13-DAY TOUR PACKAGE | BEST OF SOUTH KOREA

The Itinerary

Day 8 Busan City Tour

This morning you'll head out on a full-day tour of Busan, the hub of Asia. First up you'll visit the Yongdusan Dragon Head Park, called Yongdusan because the shape of the mountain resembles a dragon's head emerging from the sea. Within the park, you'll find the 120-metre-high Busan Tower. For those interested in ascending to the top, tickets are available for direct purchase (approximately USD per person). The tower provides a stunning bird's-eye view of the entire city of Busan, including islands and ships dotted in the distant seas. From there you'll head to the Jagalchi Fish Market which is the largest fish market in Korea and a popular "must-see" site for tourists in Busan.

Afterwards, visit Haedong Yonggungsa Temple which is situated on the coast of the north-eastern portion of Busan. This superb attraction offers visitors a rare temple along the shoreline as most temples in Korea are located in the mountains. Continue onwards to the Gamcheon Culture Village which is formed by houses built in staircase fashion on the foothills of a coastal mountain. You'll find many alleys that cut through this community are vibrantly decorated with murals and sculptures created by the residents. Finish the day at your hotel located in the heart of the city where you will check-in and enjoy the remainder of the day at leisure.

Overnight: Asti Hotel Busan or similar, Busan

Meals included: Breakfast

Day 9 Busan - Day at Leisure

Today is a day at leisure to explore the beautiful city of Busan. Alternatively, you can take part in a full-day Busan city tour to visit some sights you did not see the previous day.

Optional Activity: Full-Day Busan Sightseeing tour

This morning you'll visit Huinnyeoul Culture Village, a charming coastal village located on the sloping cliff of Yeongdo in Busan. In December 2011, the old houses of the area were remodelled and the area was reborn as a unique culture and art village where you can walk through and visit the numerous cafes and galleries while enjoying the sweeping views of Busan and the ocean.

Afterwards, visit Songdo Beach where you can board the famous cable car to ride over the bay and enjoy views through the transparent floor of the cable car before stopping by the Sky Harbor Observatory Platform which offers beautiful views of the Songdo Sea and cable cars. Return to Sondo Beach via the same cable car and take a short walk along the Songdo Cloud Walk which features sections of clear glass floor that creates the feeling of walking on top of the ocean. The 365-metre-long skywalk offers an amazing panoramic view of the surrounding area that has made the Skywalk a popular destination.

You'll then visit the Nurimaru APEC House, built to host the 2005 APEC Summit meeting at the tip of Dongbaek Island, which stands near Haeundae Beach. This eye-catching glass building has been one of Busan's symbolic places ever since. Finally, you'll visit the UN Memorial Cemetery after driving over the 7.4-kilometre Gwangandaegyo Bridge which is the longest bi-level bridge over the ocean in Korea. On the way back to the hotel, you can visit Nampodong International Market which is one of Korea's largest markets. Each alleyway is crowded with stalls and connects to Bupyeong Market, Kkangtong Market and other smaller markets. The market stocks such a wide variety of goods that you can find almost everything you need. Please see current pricing in Important Information.



13-DAY TOUR PACKAGE | BEST OF SOUTH KOREA

The Itinerary

Please note: Travellers who visit the Nampodong International Market will need to make their own way back to the hotel (approximately 10-15 minutes by taxi).

Overnight: Asti Hotel Busan or similar, Busan
Meals included: Breakfast

Day 10 Busan - Jeju Island

Today you will visit Nampodong and BIFF Square, the mecca of any Busan Trip. Every day of the week, Nampo-dong is a place crowded with people where you can experience the energy of Busan early in the morning. A major urban district, the neighbourhood has a park, department store, traditional market and major tourist attractions that make it a hot place for locals, tourists and foreigners alike.

Afterwards, you'll fly to Jeju Island, also known as the "Island Of Gods". This volcanic island has scenic natural beauty, unique cultural traditions and a temperate climate. In 2007, the Jeju Volcanic Island and Lava Tubes were listed as a UNESCO World Heritage Site in South Korea. On arrival in Jeju, you'll transfer to your hotel where you will check-in and enjoy the remainder of the day at leisure.

Overnight: Gloucester Hotels & Resorts or similar, Jeju Island
Meals included: Breakfast

Day 11 Jeju Island Tour

Today you'll head out on a full-day tour of this amazing island. Your first stop will be Seongeup Village, located at the foot of Halla Mountain, this is a small town that holds a vast amount of culture from 1410 to 1914. Cultural properties in the folk village have been handed down from generation to generation and include treasures such as residential houses, Confucian shrines, schools, ancient government offices, stone statues, large millstones (pulled by horses or ox), fortress ruins and stone monuments. Even the trees are an important part of the area's heritage as several zelkova and nettle trees that are hundreds of years old stand at the centre of the village, preserving the dignified atmosphere of a bygone era.

Afterwards, you'll enjoy a demonstration by some of Jeju Island's famous female divers. As of 2011, there were about 5,000 female divers on Jeju Island and most of them are over 50 with some even being 70 or 80 years old. This diving activity has its roots in ancient times when men went to the sea and women raised their children alone. While these women have long been the main contributors to the island's economy, their role is transitioning and nowadays they're mostly performers and are a symbol of Jeju island.

Please note: In case of rain or strong winds, the performance will be cancelled. In this case, it will be replaced by the Haenyeo Museum.

Next up, you'll visit the impressive Seongsan Ilchulbong Tuff Cone, which rises 180 metres above sea level due to a magma flow under the sea over 5,000 years ago. It was initially a separate island, but a build-up of sand and soil has connected it to the main one. A large crater, formed by the hot lava mixing with cold ocean water, is located at the top of Seongsan



13-DAY TOUR PACKAGE | BEST OF SOUTH KOREA

The Itinerary

Ilchulbong Tuff Cone. The crater is about 600 metres in diameter and 90 metres deep. It has been featured in films and was originally used for agriculture but has now been given over to a field of silver grass.

The final stop of the tour is Ilchul Land, a beautiful theme park with a flower garden including Bonsai Garden and also has "Micheon Cave," which is famous for its natural lava caves, and 365m of the 1,700m that can be observed is an open area, so you can explore the inside. The remaining 1,340m is set to be revealed later.

You'll then finish the day back at your hotel where you can enjoy the remainder of the day at leisure.

Overnight: Gloucester Hotels & Resorts or similar, Jeju Island

Meals included: Breakfast

Day 12 Jeju Island - Seoul

Today, transfer back to the nearby Jeju Island Airport for your flight to Seoul.

On arrival in Seoul, you will be met and transferred to your centrally-located Insadong accommodation. Along the way, you will visit an Amethyst factory and learn more about South Korean Amethyst which was one of the Koreans' symbols of wealth in olden times.

Check-in at your hotel will be from 15:00, and luggage storage will be available at reception if arriving earlier. You can then enjoy the remainder of your day at leisure.

Overnight: Ibis Ambassador Hotel or similar, Insadong, Seoul

Meals included: Breakfast

Day 13 Seoul, South Korea

Today your tour concludes and you can make your onwards travel arrangements.

Please note: Standard check-out time is 10:00.

Meals included: None



13-DAY TOUR PACKAGE | BEST OF SOUTH KOREA

Tour Inclusions

HIGHLIGHTS

Enjoy full-day tours of the vibrant metropolises of Busan and Seoul

Visit Korea's Demilitarised Zone which was established at the end of the war in 1953

Marvel at the houses in a traditional Hanok Village

Explore the UNESCO site of Seoraksan National Park, home to breathtaking views and thousands of animal and plant species

Tour Gyeongju City, the 1,000-year-old capital of the Silla Dynasty known as the 'museum without walls'

Visit Seongeup Folk Village, Seongsan Ilchulbong Tuff Cone and more on a full-day tour of Jeju Island

Stay in Insadong, the heart of Seoul and an interesting cultural and artistic hub

Visit Gyeongbokgung Palace, the National Folk Museum and Dongdaemun market on a full-day tour of Seoul

Explore Dongdaemun open market which is the largest open market in Asia

Take a cable car up to Gwongeumseong Castle and enjoy panoramic views of Mount Seoraksan

Visit Daepohang Port, one of South Korea's most popular spots for fresh seafood

Visit the Jagalchi Fish Market, the largest fish market in Korea and a popular "must-see" site in Busan

Immerse yourself in Haedong Yonggungsa Temple, a beautiful temple set right on the water's edge

Walk through Gamcheon Culture Village, formed by colourful houses built on a coastal mountain

DOMESTIC FLIGHTS

Two domestic flights from Busan to Jeju Island and Jeju Island to Seoul

ACCOMMODATION

12 nights of 3 to 4-star centrally-located hotel accommodation

DINING

Enjoy daily breakfast

ESSENTIALS

English-speaking tour guides

TRANSPORT

Transportation by air-conditioned private vehicles

Important Information

**Please note: All information provided in this brochure is subject to both change and availability. Prior to purchase please check the current deal for up-to-date information. If you have already purchased this deal, the terms and conditions on your Purchase Confirmation apply and take precedence over the information in this brochure.*

Booking Information

After purchase, you will receive a receipt and a Purchase Confirmation, directing you to an online Passenger Information Form. You must complete the Passenger Information Form within 72 hours of purchase.

Any special requests, preferences and optional extras MUST be clearly stated in your Passenger Information Form. Any change requested after submitting your Passenger Information Form cannot be guaranteed, is strictly subject to availability and will incur surcharges as outlined in the Schedule of Fees below.

Please note: All countries and territories have different entry requirements in relation to vaccinations, quarantine/isolation periods and travel restrictions. Due to the evolving nature, we would ask all of our customers to monitor, meet and adhere to the specific requirements of their intended destination(s) in the lead-up to and immediately before travel, as well as any requirements post-travel upon their return.

Flights

Return international airfares are not included in this package. You will receive an email confirmation when minimum numbers have been met and the departure is guaranteed.

We recommend making further travel arrangements, such as flights, after you have received confirmation of a guaranteed departure.

TripADeal assumes no liability for financial losses incurred due to travel arrangements made prior to confirmation of guaranteed departure.

Our Policies

Cancellation and Refund Policy

By placing a booking with us, you acknowledge the following important information:

- **we act as your booking agent** ; TripADeal is a booking services provider, and curates the Travel Offers available on our website. We act as your booking agent, and we receive payment for the Booking Services as part of the booking price, however, we do not provide any of the Travel Services (flights, accommodation, tours or other products or services) included in your booking – the Travel Services are provided by a number of third party Travel Suppliers.
- **each booking is unique** ; our Travel Offers are made up of a variety of different components and are, during the booking process, uniquely tailored to suit your requirements, for example, departure dates and ports, flight and room upgrades, tour inclusions, etc.
- **changes/modifications to your booking may not be possible** ; once your booking has been made, changes or modifications may not be possible, and where possible, may incur a fee. It is important to ensure that the information you provide during the booking process is accurate and up to date, and that you read the Travel Offer carefully before placing your order.
- **Travel Offers are a package** ; our Travel Offers have been curated into package offerings and must be used as a package – individual components cannot be used independently of the full package offering.
- **our Travel Offers are generally non-refundable** ; in order to provide great value Travel Offers, we work with a variety of Travel Suppliers to find the best deals – this often means the Travel Suppliers' offerings are non-refundable to ensure the best price. We recommend that you obtain travel insurance as soon as you make a booking with us. If your plans change, you can receive a full refund (excluding credit card fees) if you cancel at least 12 months in advance to your scheduled departure date.

To read more about our Cancellation and

Refund Policy, [please click here](#).

General Terms and Conditions

By placing your booking with us, you acknowledge and agree to our [Terms & Conditions](#), [Privacy Policy](#) and [Cancellation Policy](#).

Offer Essentials

This Travel Offer is valid for travel on selected dates until the 25 November 2027.

Minimum group size 15, maximum group size 34 per vehicle.

This Travel Offer is priced per person based on a twin share.

Departure Dates & Surcharges

See checkout for live dates and availability.

Single Traveller Supplement

For solo travellers, a mandatory single supplement of \$1,050 applies.

Please note: Accommodation for single customers who are travelling on a tour or cruise package may be in a single room, depending on availability.

Child Policy

- No child discounts are offered. The full price applies to all children travelling with their parents.
- Valid for children 8 years old and over.

Please note: Children must be accompanied by a responsible adult, 18 years old and over, to travel. No unaccompanied minors are allowed.

Accommodation

Accommodation Used:

3 & 4-Star Properties (Self-Rated)

- Seoul: Ibis Ambassador Hotel or similar
- Sokcho: Ramada by Wyndham Gangwon Sokcho or similar
- Gyeongju: Commodore Hotel Gyeongju or similar
- Busan: Asti Hotel Busan or similar
- Jeju Island: Gloucester Hotels & Resorts or similar

Important Information

Please note: Accommodation/rooms offered are based on a lead-in room type and are subject to availability based on seasonality. In the instance a property is not available, a similar standard of accommodation will be provided. Properties will be confirmed and included in your travel pack, which you will receive 4-6 weeks before travel.

Extra Nights

Not available.

Please note: If you are interested in booking additional nights of accommodation pre or post-tour, please wait until you receive your travel documentation approximately 4-6 weeks before departure for the confirmed list of hotels. If booking your own additional accommodation directly with the hotel, please be aware that you may be required to change rooms at the start/end of your tour.

Maximum Room Capacity

2 people.

Triple Share

Not available.

Bedding Configuration

Twin or double (subject to availability).

Optional Tours/activities

- Day 3: Full-Day Seoul Sightseeing Tour - \$125 per person (minimum of 10 travellers required to operate)
- Day 9: Full-Day Busan Sightseeing tour - \$125 per person (minimum of 10 travellers required to operate)

Please note:

- *Prices are based per person, are subject to availability, time permitting and weather conditions*
- *The optional tours listed above must be purchased on checkout or over the phone before submitting your passenger information form (subject to availability).*
- *Some tours or shore excursions require minimum numbers to operate.*

Exclusions

- Arrival and departure flights

- Visa fees and requirements
- Domestic transfers and flights not stated in the deal offer
- Meals/beverages not stated in the deal offer
- Recommended gratuities/tipping
- Optional activities/tours
- Personal expenses
- Travel insurance

Gratuities / Tipping

Land

Gratuities (tips) are not included for the services of the tour leader (when available) and driver throughout the tour. The recommended tip is the equivalent of \$10 AUD per person per day in local currency where touring and/or transfer services are provided. This covers the guide/leader and the driver and will be collected on tour.

Please note: Tipping for services provided is always a matter of personal discretion; however, please be aware that many locals consider tipping part of their normal remuneration, and they may approach you for payment; there's no need to be intimidated by the request.

Other Important Information

TOUR GUIDE VS. TOUR LEADER

Tour Guide:

Often locals with intimate knowledge of an area, its culture, and history. Their role entails providing commentary, routing the tour, and seeing that people have a good time. They are a licensed, qualified expert who supplies specific information on the history, art, architecture and culture of the city/village/attraction where they are guiding the tour. The guide meets the group at the required place and leaves it at the end of the tour; they do not travel with the group.

Tour Leader:

An experienced person tasked with ensuring the smooth operation of tours, as well as providing practical support to passengers throughout the whole trip. Their role primarily includes assisting with

accommodation, transportation between locations, and communication with tour guides at each stop. A tour leader may provide general guidance around a city or village and offer information on the place visited on the bus. However, they are not required to have specific art, architecture, or historical knowledge. They are not allowed to provide a guided tour or commentary of a city/village/attraction once there and, if caught doing so, can be fined.

Please note: Tour leaders/guides are not a standard inclusion in all travel offers. Tour leaders/guides will only be made available when required to enhance the experience of the destination featured.

CLIMATE & AVERAGE TEMPERATURES

Unlike many other Asian destinations, South Korean weather is straightforward and easy to understand. There are only minimal regional variations throughout the country, and the year is divided neatly into four distinct seasons. There is a delightful spring (April to June), a muggy and wet summer (July to August), a refreshing autumn (September to November) and a freezing cold, snowy but dry winter (December to March). The main regional temperature differences in South Korea are accounted for by the country's altitudinous interior and its warmer, but windier, coastline. Japan and China protect South Korea from most of the area's typhoons, but one or two still manage to get through each year during the summer months.

Spring (April to June)

Typically lasting from April to June, spring is often seen as the best time of year to visit South Korea, with average daily temperatures a pleasant 15 - 18°C. During this time the flowers are in bloom and green spaces are bathed in the delightful hues of the pink cherry blossom, especially in the city of Gyeongju. The weather is the least likely to be inclement and, as a result, many festivals and events can be found taking place. Join the locals in heading for the hills and making the most of the many national parks, such as Songnisan, Seoraksan and Jirisan. You can expect

Important Information

sunny days but you should also count on destinations being more crowded as it is the most popular time to visit South Korea.

Summer (July to August)

The brief summer lasts from July to August and is the hottest time of the year in South Korea. Temperatures may range between 23°C and 30°C but this is also the wettest time of the year, with the monsoon rains bringing half of the country's annual rainfall during these months. It can be incredibly humid, so you may find yourself seeking sanctuary in the many air-conditioned spaces of Seoul, or relishing the sea breezes of coastal cities like Busan, where the famous Haeundae Beach is packed with people and parasols, and the southern holiday island of Jeju.

Autumn (September to November)

Once the muggy heat and rains of summer have passed, South Korea once again bursts into colour and festivals come to the fore. Stunning shades of orange and red pepper the autumnal landscapes - particularly throughout the country's National Parks such as Songnisan, Jirisan and Seoraksan. Long into October, the weather is usually mild enough to sport a t-shirt during the day in the seaside resorts of Jeju - and even higher in the hills - but after this you will need to think about packing some extra layers. The mild temperatures (average temperature 19-21°C), low rainfall and natural beauty make autumn a strong rival to spring as the best time of year to visit South Korea.

Winter (December to March)

South Korea is indeed a land of extremes and nowhere is this more apparent than in the sudden drop in temperature that winter brings. From summer highs of 30°C the temperatures in winter can plummet to as low as -20°C on occasion in the northern regions of the Gangwon-do Province, although it can be significantly milder along the southern coast and on the holiday island of Jeju in the far south. Falling between December and March, the long winter is freezing cold but relatively

dry, and certainly charming. Crisp, white snow can be expected creating romantic views you can enjoy without the madding crowds of spring. Winter sports enthusiasts can enjoy skiing and snowboarding at the ski resorts in the Gyeonggi-do Province and in Gangwon-do which sees a higher than average annual snowfall.

Weather

We always suggest referring to an online source for the most up-to-date weather information for your destination/s.

INTERNAL FLIGHTS

Seat Selection & Frequent Flyer Points:

We do not arrange seat selection. It is essential to highlight that some airlines do not allow pre-selected seats. We strongly suggest you contact the airline directly with seating allocation requirements and/or arrive at the airport earlier to arrange your seating. While we do not add frequent flyer member details to bookings, you can do this directly with the airline once you have your flight information.

Dietary Requests:

Meal options and availability differ between airlines and routes therefore not all dietary requests can be accommodated. If your flight includes meals we will select the most suitable option available based on the dietary requirements you have specified. All meal requests are subject to airline approval and are not guaranteed, therefore we recommend preparing for your flight by bringing appropriate food for yourself, as required.

Passport Validity:

Customers must provide valid passport details either at the time of purchase or no later than 90 days before the departure date. Failure to do so may result in the cancellation of the booking. Customers will be responsible for any costs and fees incurred in this instance.

COACH TOUR

Meals:

For meals not included, the tour leader (when available) will offer assistance with reservations, suggestions and directions to local restaurants. It is your responsibility to notify us of any dietary requests/requirements.

Please note: We will do our best to meet your requests/requirements; however, we cannot guarantee that we will always be able to.

Luggage:

You will be responsible for all your personal belongings whilst on tour. You must carry your own luggage from the vehicle to the hotel room and back to the vehicle. The driver will assist with the uploading and unloading of bags from the vehicle.

OTHER

Mobility:

If you require wheelchair access please contact our friendly sales and service team to inquire on your behalf.

Fitness Level Required:

Adventure (and spontaneity) create some of the best travel memories. Bear in mind, your home schedules and timings might not be adhered to on tour - it's all part of the fun!

A low-moderate level of fitness will be required. Expect a comfortable pace of touring with gentle activity. This may include days averaging up to 5,000 steps with a maximum duration of 2 hours walking per day. You will be required to have the ability to walk up and down small flights of stairs and gentle slopes unassisted. You will be responsible for your own luggage and have the ability to board all modes of transport without assistance.

Please note:

- *It is expected that every traveller be self-reliant and able to undertake all aspects of their own travel. Please speak to your booking agent about your personal circumstances and any assistance requirements to ensure this tour is right for you.*

Important Information

- *If you have any concerns, please consult your healthcare provider prior to purchase/travel.*

Sightseeing:

Please note: If entry to a site is affected by changes in operating hours or public holiday closures, your itinerary, where possible, may be adjusted, or a similar activity will be offered in its place (subject to availability).

Shopping:

Shopping overseas can be a daunting and confusing experience, especially when there is a language barrier. Please be very cautious when foreign currencies and prices are involved. If paying by credit card, please pay close attention to the amount you are being charged and keep all your receipts.

Do not make any purchases you are not comfortable with or feel pressured into. If you are uncertain or need assistance with the language barrier, please seek assistance from your Tour Guide/Leader. Please refer to our [Terms and Conditions](#) regarding shopping for further information.

Visas

Australian passport holders can visit South Korea as tourists for stays of up to 90 days without applying for a K-ETA (or visa waiver). The South Korean Government has announced that Australian passport holders will remain exempt from applying for a K-ETA until 31 December 2026. While you don't need a visa or a K-ETA, you do need to complete a digital arrival card. See the official government portal at www.e-arrivalcard.go.kr.

Important:

- *Please start arranging your visa three weeks before departure to account for any delays due to consulate operating hours.*
- *Visa rules are subject to change. Please check with the nearest embassy, consulate or immigration department of the destination/s you are visiting once you receive your travel documentation to ensure you have the most up to date information.*

- *It is your responsibility to be travel-ready and ensure that you are aware and comply with any destination or travel requirements, including the validity of all required travel documents.*
- *Passengers who are not Australian citizens must also check with the respective consulate or visa agency to determine what their visa requirements are and what personal identification is required.*
- *It is also important to note that some areas of employment, such as journalism, government authorities and charity organisations, may have additional restrictions in applying for visas. This may, in turn, affect the type of application required.*

Travel Insurance

Embarking on your next trip is exciting, and while you hope the unexpected does not happen, it is best to be prepared. We strongly recommend you take out travel insurance when making your booking. Whether it's a potential medical emergency, a flight cancellation, a delayed suitcase, or an unforeseen event, it's important to ensure you're adequately protected. For more information or advice visit <https://www.tripadeal.com.au/travel-insurance>

Schedule Of Fees

Voluntary Changes

This includes booking changes requested by you, including but not limited to those changes requiring an airline ticket or a Purchase Confirmation reissue.

- Changes - \$100 per booking and any additional charges applied by the airline/cruise company/accommodation/other travel providers.

Name Changes Due To Passenger Error

- If the incorrect name has been provided, charges of \$100 per booking and any additional charges applied by the airline/cruise company/accommodation/other travel providers.

Supplier Fees

In the event the tour package you have purchased is unable to proceed, and/or a Travel Supplier is unable to fulfil the tour due to external circumstances (Limitation of Liability e.g. a Force Majeure event), there may be a fee or amount of money that is withheld by our Suppliers and is unrecoverable. This may be due to non-refundable airline tickets, cancellation penalties with cruise cabins or unrecoverable payments with our land/accommodation partners. If refunds are not available from Suppliers, we will endeavour to obtain a travel credit on the best terms available and communicate these outcomes to you. In the event we are unable to obtain a refund or travel service credit, or part thereof, this cost is passed on to the customer as a Supplier Fee.