

Swan Hellenic Luxury Antarctica

SWAN HELLENIC'S SH MINERVA ● VEGA OR DIANA

The Offer

Prepare for an ultimate bucket list adventure, taking you to the vibrant streets of Buenos Aires and the silent majesty of the Antarctic Peninsula. This is a voyage to the edge of the world, designed for those who crave the truly extraordinary.

Your adventure begins in Argentina's vibrant capital, where grand European architecture meets unmistakable Latin passion. Take a charter flight to Ushuaia, the literal "End of the World", to board your boutique Swan Hellenic expedition ship and begin your crossing toward the White Continent.

You will be hosted aboard either the SH Minerva, SH Vega or SH Diana. These 5-star boutique ships are masterclasses in Scandinavian elegance, designed to offer an intimate immersion in the world's most remote regions. Boasting PC5 ice-strengthened hulls and expansive stabilisers, your journey through polar waters will be exceptionally smooth.

For four unforgettable days, you'll navigate the Antarctic Peninsula, a realm of colossal icebergs and shimmering glaciers. Witness the drama of the Lemaire Channel and step ashore on Petermann Island, where bustling colonies of

Adelie penguins and hulking elephant seals reign supreme. Whether you're watching whales breach from the observation deck or exploring via Zodiac, the sheer scale of this pristine wilderness will leave you speechless.

Returning to South America, the dream continues with three nights in Buenos Aires. From the vivid houses of La Boca to the chic waterfront of Puerto Madero and the historic charm of San Telmo, you'll have ample time to soak up the city's infectious energy.

This incredible adventure includes all flights, a 9-night expedition cruise with Swan Hellenic, 4 nights of 5-star hotel accommodation, 30 meals including all meals while cruising

Want more? Choose itinerary 2 or 3 for a longer Antarctic expedition cruise.

Offer available for a limited time or until sold out. TRIP A DEAL PTY LTD: 50149240433

Updated: 21 May 2026 06:07:37

Have a question about this deal? We're here to help.
Call our friendly team on 1300 158 912

1

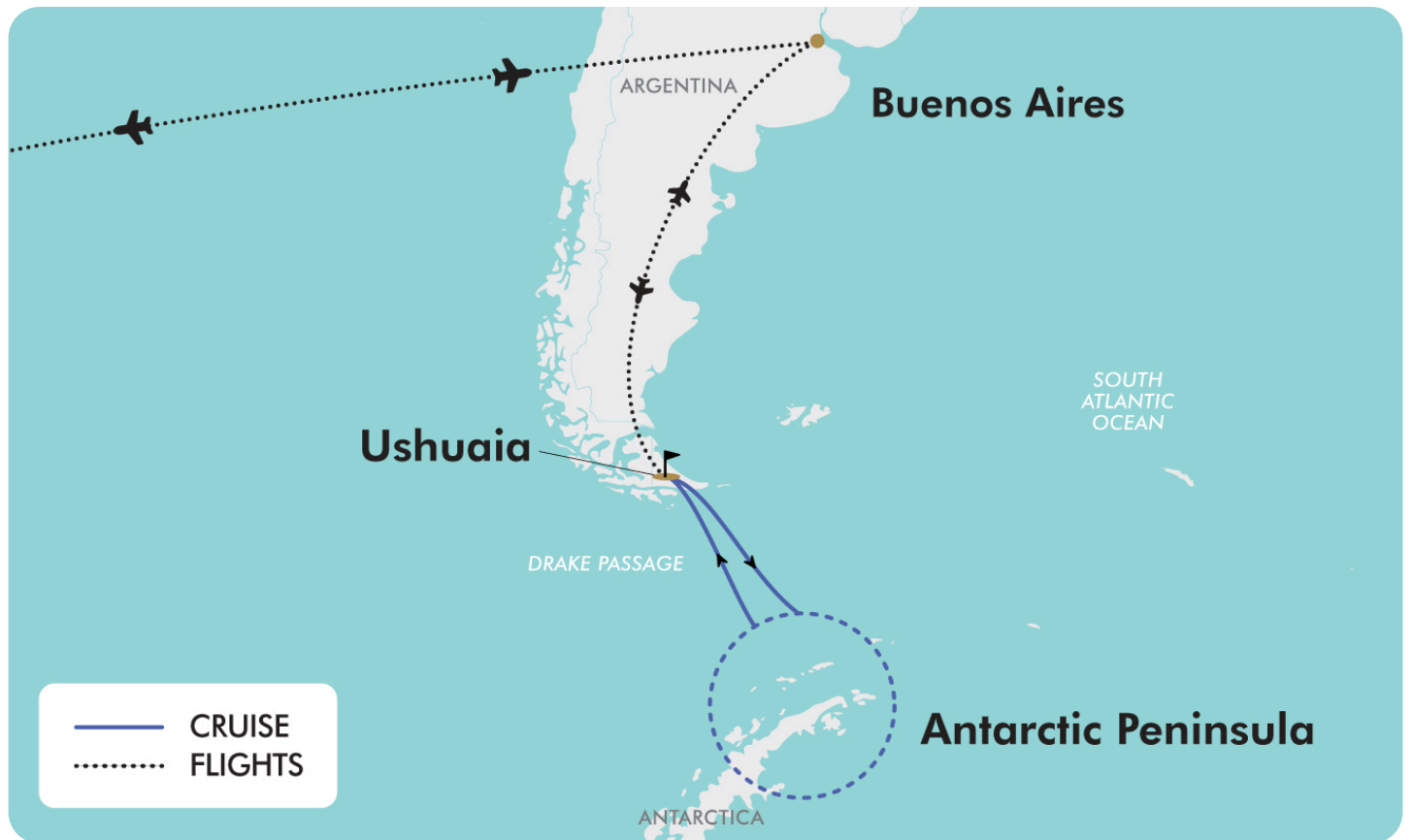
FREQUENT
FLYER 

 Trip
a Deal



15-DAY CRUISE PACKAGE | SWAN HELLENIC LUXURY ANTARCTICA

The Map



Offer available for a limited time or until sold out. TRIP A DEAL PTY LTD: 50149240433

Updated: 21 May 2026 06:07:37

Have a question about this deal? We're here to help.
Call our friendly team on 1300 158 912



15-DAY CRUISE PACKAGE | SWAN HELLENIC LUXURY ANTARCTICA

The Itinerary

Itinerary 1

Day 1 Australia (or New Zealand) - Buenos Aires

Buen viaje! (Spanish for 'have a great trip!')

Today, at the appropriate time, make your own way to the airport to board your flight to Buenos Aires, the first stop on your journey to Antarctica!

Upon arrival at Buenos Aires Airport, be welcomed and transferred to the hotel. Buenos Aires is one of the largest cities in Latin America. With a wide range of cultural offerings and stunning sights, it is generally the starting point for most Argentinean experiences. Let yourself be seduced by its beautiful busy streets with its unique mixture of European and Latin cultures. Enjoy grand European palaces, cute cafés and abundant parks.

Please note: Due to flight times and scheduling some customers may be required to depart day 0. Flight times will be confirmed on your final documentation which you will receive at least 4-6 weeks prior to departure.

Overnight: Sofitel or similar, Buenos Aires

Meals included: In-Flight

Day 2 Buenos Aires - Ushuaia - Embark your 9-night Antarctic Peninsula Discovery Cruise

Early this morning you will be picked up and transferred to Buenos Aires Airport for the internal flight to Ushuaia. Ushuaia is the southernmost city in Argentina. Due to its location near the South Pole, it has approximately 18 hours of sunlight in the summer, whereas in the winter only around 8. However, this does not prevent tourists from visiting. Ushuaia offers pristine places, waiting for you to discover them and live the adventure of being at "the world's end".

Upon arrival, be transferred aboard your boutique ship before departing for your journey through one of the most captivating wilderness regions of the world.

Overnight: Swan Hellenic SH Minerva, SH Vega or SH Diana

Meals included: Dinner

Day 3 Cruising

Sea days are rarely dull. Take the time to sit back and let the world go by. The ship's observation decks provide stunning views of the passing ocean. A day at sea gives you the opportunity to mingle with other passengers and share your experiences of this incredible trip or head to our library which is stocked full of reference books. Get an expert's view in one of our on-board lectures or perhaps perfect your photography skills with invaluable advice from our onboard professional photographers.

Overnight: Swan Hellenic SH Minerva, SH Vega or SH Diana

Meals included: Breakfast; Lunch; Dinner



15-DAY CRUISE PACKAGE | SWAN HELLENIC LUXURY ANTARCTICA

The Itinerary

Itinerary 1

Day 4 Cruising

Sea days are rarely dull. Take the time to sit back and let the world go by. The ship's observation decks provide stunning views of the passing ocean. A day at sea gives you the opportunity to mingle with other passengers and share your experiences of this incredible trip or head to our library which is stocked full of reference books. Get an expert's view in one of our on-board lectures or perhaps perfect your photography skills with invaluable advice from our onboard professional photographers.

Overnight: Swan Hellenic SH Minerva, SH Vega or SH Diana
Meals included: Breakfast; Lunch; Dinner

Day 5 Antarctic Peninsula

Nestled amidst the awe-inspiring glaciers, colossal icebergs and snow-clad islands, the Antarctic Peninsula stands as the quintessential backdrop for any Antarctic expedition. It's here that most visitors to the White Continent find themselves living out their ultimate polar adventure. This region, the most readily-accessible part of Antarctica, not only accommodates various scientific research bases but also showcases some of the planet's most captivating wildlife vistas.

One of the crown jewels of the Antarctic Peninsula is the spellbinding Lemaire Channel, a narrow passage framed by towering peaks and sculpted ice formations, offering a visual feast for every visitor. Shore excursions may lead to Petermann Island, where an enchanting spectacle unfolds, bustling colonies of Adelie penguins, elegant blue-eyed shags and audacious skuas create a vibrant tapestry of life. Amongst them, hulking elephant seals make their presence known, with their ponderous

movements and commanding presence, truly embodying the grandeur of this frozen realm. This encounter with nature's marvels is bound to etch itself into your memory forever.

Overnight: Swan Hellenic SH Minerva, SH Vega or SH Diana
Meals included: Breakfast; Lunch; Dinner

Day 6 Antarctic Peninsula

Nestled amidst the awe-inspiring glaciers, colossal icebergs and snow-clad islands, the Antarctic Peninsula stands as the quintessential backdrop for any Antarctic expedition. It's here that most visitors to the White Continent find themselves living out their ultimate polar adventure. This region, the most readily-accessible part of Antarctica, not only accommodates various scientific research bases but also showcases some of the planet's most captivating wildlife vistas.

One of the crown jewels of the Antarctic Peninsula is the spellbinding Lemaire Channel, a narrow passage framed by towering peaks and sculpted ice formations, offering a visual feast for every visitor. Shore excursions may lead to Petermann Island, where an enchanting spectacle unfolds, bustling colonies of Adelie penguins, elegant blue-eyed shags and audacious skuas create a vibrant tapestry of life. Amongst them, hulking elephant seals make their presence known, with their ponderous movements and commanding presence, truly embodying the grandeur of this frozen realm. This encounter with nature's marvels is bound to etch itself into your memory forever.

Overnight: Swan Hellenic SH Minerva, SH Vega or SH Diana
Meals included: Breakfast; Lunch; Dinner

Offer available for a limited time or until sold out. TRIP A DEAL PTY LTD: 50149240433

Updated: 21 May 2026 06:07:37

Have a question about this deal? We're here to help.
Call our friendly team on 1300 158 912

4

FREQUENT
FLYER



Trip
aDeal



15-DAY CRUISE PACKAGE | SWAN HELLENIC LUXURY ANTARCTICA

The Itinerary

Itinerary 1

Day 7 Antarctic Peninsula

Nestled amidst the awe-inspiring glaciers, colossal icebergs and snow-clad islands, the Antarctic Peninsula stands as the quintessential backdrop for any Antarctic expedition. It's here that most visitors to the White Continent find themselves living out their ultimate polar adventure. This region, the most readily-accessible part of Antarctica, not only accommodates various scientific research bases but also showcases some of the planet's most captivating wildlife vistas.

One of the crown jewels of the Antarctic Peninsula is the spellbinding Lemaire Channel, a narrow passage framed by towering peaks and sculpted ice formations, offering a visual feast for every visitor. Shore excursions may lead to Petermann Island, where an enchanting spectacle unfolds, bustling colonies of Adelie penguins, elegant blue-eyed shags and audacious skuas create a vibrant tapestry of life. Amongst them, hulking elephant seals make their presence known, with their ponderous movements and commanding presence, truly embodying the grandeur of this frozen realm. This encounter with nature's marvels is bound to etch itself into your memory forever.

Overnight: Swan Hellenic SH Minerva, SH Vega or SH Diana
Meals included: Breakfast; Lunch; Dinner

Day 8 Antarctic Peninsula

Nestled amidst the awe-inspiring glaciers, colossal icebergs and snow-clad islands, the Antarctic Peninsula stands as the quintessential backdrop for any Antarctic expedition. It's here that most visitors to the White Continent find themselves living out their ultimate polar adventure. This region, the most readily-accessible part of Antarctica, not only accommodates various scientific research bases but also showcases some of the planet's most captivating wildlife vistas.

One of the crown jewels of the Antarctic Peninsula is the spellbinding Lemaire Channel, a narrow passage framed by towering peaks and sculpted ice formations, offering a visual feast for every visitor. Shore excursions may lead to Petermann Island, where an enchanting spectacle unfolds, bustling colonies of Adelie penguins, elegant blue-eyed shags and audacious skuas create a vibrant tapestry of life. Amongst them, hulking elephant seals make their presence known, with their ponderous movements and commanding presence, truly embodying the grandeur of this frozen realm. This encounter with nature's marvels is bound to etch itself into your memory forever.

Overnight: Swan Hellenic SH Minerva, SH Vega or SH Diana
Meals included: Breakfast; Lunch; Dinner



15-DAY CRUISE PACKAGE | SWAN HELLENIC LUXURY ANTARCTICA

The Itinerary

Itinerary 1

Day 9 Cruising

Sea days are rarely dull. Take the time to sit back and let the world go by. The ship's observation decks provide stunning views of the passing ocean. A day at sea gives you the opportunity to mingle with other passengers and share your experiences of this incredible trip or head to our library which is stocked full of reference books. Get an expert's view in one of our on-board lectures or perhaps perfect your photography skills with invaluable advice from our onboard professional photographers.

Overnight: Swan Hellenic SH Minerva, SH Vega or SH Diana
Meals included: Breakfast; Lunch; Dinner

Day 10 Cruising

Sea days are rarely dull. Take the time to sit back and let the world go by. The ship's observation decks provide stunning views of the passing ocean. A day at sea gives you the opportunity to mingle with other passengers and share your experiences of this incredible trip or head to our library which is stocked full of reference books. Get an expert's view in one of our on-board lectures or perhaps perfect your photography skills with invaluable advice from our onboard professional photographers.

Overnight: Swan Hellenic SH Minerva, SH Vega or SH Diana
Meals included: Breakfast; Lunch; Dinner

Day 11 Disembark Ushuaia, Argentina - Buenos Aires

This morning you will arrive back in Ushuaia. At the appropriate time, you will be transferred to the airport for the return flight back to Buenos Aires.

Upon arrival into Buenos Aires, you will be met at the airport and transferred to your hotel to enjoy the next 3 nights in this captivating city.

Overnight: Hilton Buenos Aires or similar, Buenos Aires
Meals included: Breakfast

Day 12 Buenos Aires - Day at Leisure

Today is your day to relish at your own pace. Delight in the sights of May Square, or Plaza de Mayo, a pivotal and iconic area in Buenos Aires, situated just behind the Government Palace (called 'Casa Rosada' or Pink House). It's a must-visit, as most images of the Pink House originate from this vantage point. Take a leisurely stroll down 9 de Julio Avenue renowned as the widest avenue globally. Nearby you will find the iconic Obelisk, the bustling Corrientes Avenue, and the prestigious Colon Theater. Wander through La Boca, a destination firmly etched on the bucket lists of many Buenos Aires enthusiasts. Here, you'll encounter the legendary vividly painted houses and the picturesque, El Caminito Museum and alley, both recognised as iconic landmarks of the city.

Overnight: Hilton Buenos Aires or similar, Buenos Aires
Meals included: Breakfast



15-DAY CRUISE PACKAGE | SWAN HELLENIC LUXURY ANTARCTICA

The Itinerary

Itinerary 1

Day 13 Buenos Aires

Today, continue your exploration of this vibrant and passionate city at your own leisurely pace. Begin by admiring *Floralis Generica*, an imposing metal flower sculpture nestled in the Recoleta neighbourhood of Buenos Aires. This magnificent artwork gracefully opens during the day and gracefully closes at night. On sunny days, it casts enchanting reflections in the shimmering water pool beneath its petals.

Make your way to Puerto Madero, a transformed district situated within the historic harbour of Buenos Aires. Today, it stands as a chic and upscale enclave, boasting a plethora of restaurants, cafes, corporate headquarters, and impressive skyscrapers. While in Buenos Aires, a visit to one of the city's most significant landmarks is a must: *Puente de la Mujer*, also known as the Woman's Bridge. This striking architectural marvel spans the heart of Puerto Madero, and the best part is, it's free to explore and cross.

Venture into the charming neighbourhood of San Telmo, the oldest in Buenos Aires, where you'll encounter a treasure trove of beautiful old buildings and traditional coffee shops and bars. This historic neighbourhood extends from Plaza de Mayo, branching out to the right of this central square. With each step, you'll delve deeper into the city's rich cultural tapestry. Enjoy your day of discovery!

Overnight: Hilton Buenos Aires or similar, Buenos Aires

Meals included: Breakfast

Day 14 Buenos Aires, Argentina - Australia (or New Zealand)

The time has come to begin your journey back home. At the appropriate time you will be picked up and transferred to Buenos Aires Airport for your flight home.

Please note: Due to flight scheduling and availability, some customers may be required to depart on day 15, to arrive on day 16. Additional accommodation will be provided for the extra night in Buenos Aires. Flight times will be indicated on your final documentation, which you will receive 4-6 weeks prior to departure.

Meals included: Breakfast

Day 15 Arrive In Australia (or New Zealand)

Welcome home!

Please note: Some flights may arrive +1 day later.

Meals included: None



15-DAY CRUISE PACKAGE | SWAN HELLENIC LUXURY ANTARCTICA

The Itinerary

Itinerary 2

Day 1 Australia (or New Zealand) - Buenos Aires, Argentina

Buen viaje! (Spanish for 'have a great trip!')

Today, at the appropriate time, make your own way to the airport to board your flight to Buenos Aires, the first stop on your journey to Antarctica!

Upon arrival at Buenos Aires Airport, be welcomed and transferred to the hotel. Buenos Aires is one of the largest cities in Latin America. With a wide range of cultural offerings and stunning sights, it is generally the starting point for most Argentinean experiences. Let yourself be seduced by its beautiful busy streets with its unique mixture of European and Latin cultures. Enjoy grand European palaces, cute cafes and abundant parks.

Please note: Due to flight times and scheduling some customers may be required to depart day 0. Flight times will be confirmed on your final documentation which you will receive at least 4-6 weeks prior to departure.

Overnight: Sofitel or similar, Buenos Aires

Meals included: In-Flight

Day 2 Buenos Aires - Ushuaia - Embark your 10-night Antarctic Peninsula Discovery Cruise

Early this morning you will be picked up and transferred to Buenos Aires Airport for the internal flight to Ushuaia. Ushuaia is the southernmost city in Argentina. Due to its location near the South Pole, it has approximately 18 hours of sunlight in the summer, whereas in the winter only around 8. However, this does not prevent tourists from visiting. Ushuaia offers pristine places, waiting for you to discover them and live the adventure of being at "the world's end".

Upon arrival, be transferred aboard your boutique ship before departing for your journey through one of the most captivating wilderness regions of the world.

Overnight: Swan Hellenic SH Minerva, SH Vega or SH Diana

Meals included: Breakfast; Dinner

Day 3 Cruising

Sea days are rarely dull. Take the time to sit back and let the world go by. The ship's observation decks provide stunning views of the passing ocean. A day at sea gives you the opportunity to mingle with other passengers and share your experiences of this incredible trip or head to our library which is stocked full of reference books. Get an expert's view in one of our on-board lectures or perhaps perfect your photography skills with invaluable advice from our onboard professional photographers.

Overnight: Swan Hellenic SH Minerva, SH Vega or SH Diana

Meals included: Breakfast; Lunch; Dinner



15-DAY CRUISE PACKAGE | SWAN HELLENIC LUXURY ANTARCTICA

The Itinerary

Itinerary 2

Day 4 Cruising

Sea days are rarely dull. Take the time to sit back and let the world go by. The ship's observation decks provide stunning views of the passing ocean. A day at sea gives you the opportunity to mingle with other passengers and share your experiences of this incredible trip or head to our library which is stocked full of reference books. Get an expert's view in one of our on-board lectures or perhaps perfect your photography skills with invaluable advice from our onboard professional photographers.

Overnight: Swan Hellenic SH Minerva, SH Vega or SH Diana
Meals included: Breakfast; Lunch; Dinner

Day 5 Antarctic Peninsula

Nestled amidst the awe-inspiring glaciers, colossal icebergs and snow-clad islands, the Antarctic Peninsula stands as the quintessential backdrop for any Antarctic expedition. It's here that most visitors to the White Continent find themselves living out their ultimate polar adventure. This region, the most readily-accessible part of Antarctica, not only accommodates various scientific research bases but also showcases some of the planet's most captivating wildlife vistas.

One of the crown jewels of the Antarctic Peninsula is the spellbinding Lemaire Channel, a narrow passage framed by towering peaks and sculpted ice formations, offering a visual feast for every visitor. Shore excursions may lead to Petermann Island, where an enchanting spectacle unfolds, bustling colonies of Adelie penguins, elegant blue-eyed shags and audacious skuas create a vibrant tapestry of life. Amongst them, hulking elephant seals make their presence known, with their ponderous

movements and commanding presence, truly embodying the grandeur of this frozen realm. This encounter with nature's marvels is bound to etch itself into your memory forever.

Overnight: Swan Hellenic SH Minerva, SH Vega or SH Diana
Meals included: Breakfast; Lunch; Dinner

Day 6 Antarctic Peninsula

Nestled amidst the awe-inspiring glaciers, colossal icebergs and snow-clad islands, the Antarctic Peninsula stands as the quintessential backdrop for any Antarctic expedition. It's here that most visitors to the White Continent find themselves living out their ultimate polar adventure. This region, the most readily-accessible part of Antarctica, not only accommodates various scientific research bases but also showcases some of the planet's most captivating wildlife vistas.

One of the crown jewels of the Antarctic Peninsula is the spellbinding Lemaire Channel, a narrow passage framed by towering peaks and sculpted ice formations, offering a visual feast for every visitor. Shore excursions may lead to Petermann Island, where an enchanting spectacle unfolds, bustling colonies of Adelie penguins, elegant blue-eyed shags and audacious skuas create a vibrant tapestry of life. Amongst them, hulking elephant seals make their presence known, with their ponderous movements and commanding presence, truly embodying the grandeur of this frozen realm. This encounter with nature's marvels is bound to etch itself into your memory forever.

Overnight: Swan Hellenic SH Minerva, SH Vega or SH Diana
Meals included: Breakfast; Lunch; Dinner

Offer available for a limited time or until sold out. TRIP A DEAL PTY LTD: 50149240433

Updated: 21 May 2026 06:07:37

Have a question about this deal? We're here to help.
Call our friendly team on 1300 158 912

9

FREQUENT
FLYER



Trip
aDeal



15-DAY CRUISE PACKAGE | SWAN HELLENIC LUXURY ANTARCTICA

The Itinerary

Itinerary 2

Day 7 Antarctic Peninsula

Nestled amidst the awe-inspiring glaciers, colossal icebergs and snow-clad islands, the Antarctic Peninsula stands as the quintessential backdrop for any Antarctic expedition. It's here that most visitors to the White Continent find themselves living out their ultimate polar adventure. This region, the most readily-accessible part of Antarctica, not only accommodates various scientific research bases but also showcases some of the planet's most captivating wildlife vistas.

One of the crown jewels of the Antarctic Peninsula is the spellbinding Lemaire Channel, a narrow passage framed by towering peaks and sculpted ice formations, offering a visual feast for every visitor. Shore excursions may lead to Petermann Island, where an enchanting spectacle unfolds - bustling colonies of Adelie penguins, elegant blue-eyed shags and audacious skuas create a vibrant tapestry of life. Amongst them, hulking elephant seals make their presence known, with their ponderous movements and commanding presence, truly embodying the grandeur of this frozen realm. This encounter with nature's marvels is bound to etch itself into your memory forever.

Overnight: Swan Hellenic SH Minerva, SH Vega or SH Diana
Meals included: Breakfast; Lunch; Dinner

Day 8 Antarctic Peninsula

Nestled amidst the awe-inspiring glaciers, colossal icebergs and snow-clad islands, the Antarctic Peninsula stands as the quintessential backdrop for any Antarctic expedition. It's here that most visitors to the White Continent find themselves living out their ultimate polar adventure. This region, the most readily-accessible part of Antarctica, not only accommodates various scientific research bases but also showcases some of the planet's most captivating wildlife vistas.

One of the crown jewels of the Antarctic Peninsula is the spellbinding Lemaire Channel, a narrow passage framed by towering peaks and sculpted ice formations, offering a visual feast for every visitor. Shore excursions may lead to Petermann Island, where an enchanting spectacle unfolds, bustling colonies of Adelie penguins, elegant blue-eyed shags and audacious skuas create a vibrant tapestry of life. Amongst them, hulking elephant seals make their presence known, with their ponderous movements and commanding presence, truly embodying the grandeur of this frozen realm. This encounter with nature's marvels is bound to etch itself into your memory forever.

Overnight: Swan Hellenic SH Minerva, SH Vega or SH Diana
Meals included: Breakfast; Lunch; Dinner



15-DAY CRUISE PACKAGE | SWAN HELLENIC LUXURY ANTARCTICA

The Itinerary

Itinerary 2

Day 9 Antarctic Peninsula

Nestled amidst the awe-inspiring glaciers, colossal icebergs and snow-clad islands, the Antarctic Peninsula stands as the quintessential backdrop for any Antarctic expedition. It's here that most visitors to the White Continent find themselves living out their ultimate polar adventure. This region, the most readily-accessible part of Antarctica, not only accommodates various scientific research bases but also showcases some of the planet's most captivating wildlife vistas.

One of the crown jewels of the Antarctic Peninsula is the spellbinding Lemaire Channel, a narrow passage framed by towering peaks and sculpted ice formations, offering a visual feast for every visitor. Shore excursions may lead to Petermann Island, where an enchanting spectacle unfolds, bustling colonies of Adelie penguins, elegant blue-eyed shags and audacious skuas create a vibrant tapestry of life. Amongst them, hulking elephant seals make their presence known, with their ponderous movements and commanding presence, truly embodying the grandeur of this frozen realm. This encounter with nature's marvels is bound to etch itself into your memory forever.

Overnight: Swan Hellenic SH Minerva, SH Vega or SH Diana
Meals included: Breakfast; Lunch; Dinner

Day 10 Cruising

Sea days are rarely dull. Take the time to sit back and let the world go by. The ship's observation decks provide stunning views of the passing ocean. A day at sea gives you the opportunity to mingle with other passengers and share your experiences of this incredible trip or head to our library which is stocked full of reference books. Get an expert's view in one of our on-board lectures or perhaps perfect your photography skills with invaluable advice from our onboard professional photographers.

Overnight: Swan Hellenic SH Minerva, SH Vega or SH Diana
Meals included: Breakfast; Lunch; Dinner

Day 11 Cruising

Sea days are rarely dull. Take the time to sit back and let the world go by. The ship's observation decks provide stunning views of the passing ocean. A day at sea gives you the opportunity to mingle with other passengers and share your experiences of this incredible trip or head to our library which is stocked full of reference books. Get an expert's view in one of our on-board lectures or perhaps perfect your photography skills with invaluable advice from our onboard professional photographers.

Overnight: Swan Hellenic SH Minerva, SH Vega or SH Diana
Meals included: Breakfast; Lunch; Dinner

Day 12 Disembark Ushuaia, Argentina - Buenos Aires

This morning you will arrive back in Ushuaia. At the appropriate time, you will be transferred to the airport for the return flight back to Buenos Aires.



15-DAY CRUISE PACKAGE | SWAN HELLENIC LUXURY ANTARCTICA

The Itinerary

Itinerary 2

Upon arrival into Buenos Aires, you will be met at the airport and transferred to your hotel to enjoy the next 3 nights in this captivating city.

Overnight: Hilton Buenos Aires or similar, Buenos Aires
Meals included: Breakfast

Day 13 Buenos Aires - Day at Leisure

Today is your day to relish at your own pace. Delight in the sights of May Square, or Plaza de Mayo, a pivotal and iconic area in Buenos Aires, situated just behind the Government Palace (called 'Casa Rosada' or Pink House). It's a must-visit, as most images of the Pink House originate from this vantage point. Take a leisurely stroll down 9 de Julio Avenue renowned as the widest avenue globally. Nearby you will find the iconic Obelisk, the bustling Corrientes Avenue, and the prestigious Colon Theater. Wander through La Boca, a destination firmly etched on the bucket lists of many Buenos Aires enthusiasts. Here, you'll encounter the legendary vividly painted houses and the picturesque, El Caminito Museum and alley, both recognised as iconic landmarks of the city.

Overnight: Hilton Buenos Aires or similar, Buenos Aires
Meals included: Breakfast

Day 14 Buenos Aires

Today, continue your exploration of this vibrant and passionate city at your own leisurely pace.

Begin by admiring *Floralis Genérica*, an imposing metal flower sculpture nestled in the Recoleta neighbourhood of Buenos Aires. This magnificent artwork gracefully opens during the day and gracefully closes at night. On sunny days, it casts enchanting reflections in the shimmering water pool beneath its petals.

Make your way to Puerto Madero, a transformed district situated within the historic harbour of Buenos Aires. Today, it stands as a chic and upscale enclave, boasting a plethora of restaurants, cafes, corporate headquarters, and impressive skyscrapers. While in Buenos Aires, a visit to one of the city's most significant landmarks is a must: *Puente de la Mujer*, also known as the *Woman's Bridge*. This striking architectural marvel spans the heart of Puerto Madero, and the best part is, it's free to explore and cross.

Venture into the charming neighbourhood of San Telmo, the oldest in Buenos Aires, where you'll encounter a treasure trove of beautiful old buildings and traditional coffee shops and bars. This historic neighbourhood extends from Plaza de Mayo, branching out to the right of this central square. With each step, you'll delve deeper into the city's rich cultural tapestry. Enjoy your day of discovery!

Overnight: Hilton Buenos Aires or similar, Buenos Aires
Meals included: Breakfast



15-DAY CRUISE PACKAGE | SWAN HELLENIC LUXURY ANTARCTICA

The Itinerary

Itinerary 2

Day 15 Buenos Aires, Argentina - Australia (or New Zealand)

The time has come to begin your journey back home. At the appropriate time you will be picked up and transferred to Buenos Aires Airport for your flight home.

Please note: Due to flight scheduling and availability, some customers may be required to depart on day 15, to arrive on day 16. Additional accommodation will be provided for the extra night in Buenos Aires. Flight times will be indicated on your final documentation, which you will receive 4-6 weeks prior to departure.

Meals included: Breakfast

Day 16 Arrive In Australia (or New Zealand)

Welcome home!

We hope you have enjoyed your 16-day adventure to Antarctica!

Please note: Some flights may arrive +1 day later.

Meals included: None



15-DAY CRUISE PACKAGE | SWAN HELLENIC LUXURY ANTARCTICA

The Itinerary

Itinerary 3

Day 1 Australia (or New Zealand) - Buenos Aires, Argentina

Buen viaje! (Spanish for 'have a great trip!')

Today, at the appropriate time, make your own way to the airport to board your flight to Buenos Aires, the first stop on your journey to Antarctica!

Upon arrival at Buenos Aires Airport, be welcomed and transferred to the hotel. Buenos Aires is one of the largest cities in Latin America. With a wide range of cultural offerings and stunning sights, it is generally the starting point for most Argentinean experiences. Let yourself be seduced by its beautiful busy streets with its unique mixture of European and Latin cultures. Enjoy grand European palaces, cute cafés and abundant parks.

Please note: Due to flight times and scheduling some customers may be required to depart day 0. Flight times will be confirmed on your final documentation which you will receive at least 4-6 weeks prior to departure.

Overnight: Sofitel or similar, Buenos Aires

Meals included: In-Flight

Day 2 Buenos Aires - Ushuaia - Embark your 11-night Antarctic Peninsula Discovery Cruise

Early this morning you will be picked up and transferred to Buenos Aires Airport for the internal flight to Ushuaia. Ushuaia is the southernmost city in Argentina. Due to its location near the South Pole, it has approximately 18 hours of sunlight in the summer, whereas in the winter only around 8. However, this does not prevent tourists from visiting. Ushuaia offers pristine places, waiting for you to discover them and live the adventure of being at "the world's end".

Upon arrival, be transferred aboard your boutique ship before departing for your journey through one of the most captivating wilderness regions of the world.

Overnight: Swan Hellenic SH Minerva, SH Vega or SH Diana

Meals included: Breakfast; Dinner

Day 3 Cruising

Sea days are rarely dull. Take the time to sit back and let the world go by. The ship's observation decks provide stunning views of the passing ocean. A day at sea gives you the opportunity to mingle with other passengers and share your experiences of this incredible trip or head to our library which is stocked full of reference books. Get an expert's view in one of our on-board lectures or perhaps perfect your photography skills with invaluable advice from our onboard professional photographers.

Overnight: Swan Hellenic SH Minerva, SH Vega or SH Diana

Meals included: Breakfast; Lunch; Dinner



15-DAY CRUISE PACKAGE | SWAN HELLENIC LUXURY ANTARCTICA

The Itinerary

Itinerary 3

Day 4 Cruising

Sea days are rarely dull. Take the time to sit back and let the world go by. The ship's observation decks provide stunning views of the passing ocean. A day at sea gives you the opportunity to mingle with other passengers and share your experiences of this incredible trip or head to our library which is stocked full of reference books. Get an expert's view in one of our on-board lectures or perhaps perfect your photography skills with invaluable advice from our onboard professional photographers.

Overnight: Swan Hellenic SH Minerva, SH Vega or SH Diana
Meals included: Breakfast; Lunch; Dinner

Day 5 Antarctic Peninsula

Nestled amidst the awe-inspiring glaciers, colossal icebergs and snow-clad islands, the Antarctic Peninsula stands as the quintessential backdrop for any Antarctic expedition. It's here that most visitors to the White Continent find themselves living out their ultimate polar adventure. This region, the most readily-accessible part of Antarctica, not only accommodates various scientific research bases but also showcases some of the planet's most captivating wildlife vistas.

One of the crown jewels of the Antarctic Peninsula is the spellbinding Lemaire Channel, a narrow passage framed by towering peaks and sculpted ice formations, offering a visual feast for every visitor. Shore excursions may lead to Petermann Island, where an enchanting spectacle unfolds, bustling colonies of Adelie penguins, elegant blue-eyed shags and audacious skuas create a vibrant tapestry of life. Amongst them, hulking elephant seals make their presence known, with their ponderous

movements and commanding presence, truly embodying the grandeur of this frozen realm. This encounter with nature's marvels is bound to etch itself into your memory forever.

Overnight: Swan Hellenic SH Minerva, SH Vega or SH Diana
Meals included: Breakfast; Lunch; Dinner

Day 6 Antarctic Peninsula

Nestled amidst the awe-inspiring glaciers, colossal icebergs and snow-clad islands, the Antarctic Peninsula stands as the quintessential backdrop for any Antarctic expedition. It's here that most visitors to the White Continent find themselves living out their ultimate polar adventure. This region, the most readily-accessible part of Antarctica, not only accommodates various scientific research bases but also showcases some of the planet's most captivating wildlife vistas.

One of the crown jewels of the Antarctic Peninsula is the spellbinding Lemaire Channel, a narrow passage framed by towering peaks and sculpted ice formations, offering a visual feast for every visitor. Shore excursions may lead to Petermann Island, where an enchanting spectacle unfolds, bustling colonies of Adelie penguins, elegant blue-eyed shags and audacious skuas create a vibrant tapestry of life. Amongst them, hulking elephant seals make their presence known, with their ponderous movements and commanding presence, truly embodying the grandeur of this frozen realm. This encounter with nature's marvels is bound to etch itself into your memory forever.

Overnight: Swan Hellenic SH Minerva, SH Vega or SH Diana
Meals included: Breakfast; Lunch; Dinner

Offer available for a limited time or until sold out. TRIP A DEAL PTY LTD: 50149240433

Updated: 21 May 2026 06:07:37

Have a question about this deal? We're here to help.
Call our friendly team on 1300 158 912

15

FREQUENT
FLYER



Trip
aDeal



15-DAY CRUISE PACKAGE | SWAN HELLENIC LUXURY ANTARCTICA

The Itinerary

Itinerary 3

Day 7 Antarctic Peninsula

Nestled amidst the awe-inspiring glaciers, colossal icebergs and snow-clad islands, the Antarctic Peninsula stands as the quintessential backdrop for any Antarctic expedition. It's here that most visitors to the White Continent find themselves living out their ultimate polar adventure. This region, the most readily-accessible part of Antarctica, not only accommodates various scientific research bases but also showcases some of the planet's most captivating wildlife vistas.

One of the crown jewels of the Antarctic Peninsula is the spellbinding Lemaire Channel, a narrow passage framed by towering peaks and sculpted ice formations, offering a visual feast for every visitor. Shore excursions may lead to Petermann Island, where an enchanting spectacle unfolds, bustling colonies of Adelie penguins, elegant blue-eyed shags and audacious skuas create a vibrant tapestry of life. Amongst them, hulking elephant seals make their presence known, with their ponderous movements and commanding presence, truly embodying the grandeur of this frozen realm. This encounter with nature's marvels is bound to etch itself into your memory forever.

Overnight: Swan Hellenic SH Minerva, SH Vega or SH Diana
Meals included: Breakfast; Lunch; Dinner

Day 8 Antarctic Peninsula

Nestled amidst the awe-inspiring glaciers, colossal icebergs and snow-clad islands, the Antarctic Peninsula stands as the quintessential backdrop for any Antarctic expedition. It's here that most visitors to the White Continent find themselves living out their ultimate polar adventure. This region, the most readily-accessible part of Antarctica, not only accommodates various scientific research bases but also showcases some of the planet's most captivating wildlife vistas.

One of the crown jewels of the Antarctic Peninsula is the spellbinding Lemaire Channel, a narrow passage framed by towering peaks and sculpted ice formations, offering a visual feast for every visitor. Shore excursions may lead to Petermann Island, where an enchanting spectacle unfolds - bustling colonies of Adelie penguins, elegant blue-eyed shags and audacious skuas create a vibrant tapestry of life. Amongst them, hulking elephant seals make their presence known, with their ponderous movements and commanding presence, truly embodying the grandeur of this frozen realm. This encounter with nature's marvels is bound to etch itself into your memory forever.

Overnight: Swan Hellenic SH Minerva, SH Vega or SH Diana
Meals included: Breakfast; Lunch; Dinner



15-DAY CRUISE PACKAGE | SWAN HELLENIC LUXURY ANTARCTICA

The Itinerary

Itinerary 3

Day 9 Antarctic Peninsula

Nestled amidst the awe-inspiring glaciers, colossal icebergs and snow-clad islands, the Antarctic Peninsula stands as the quintessential backdrop for any Antarctic expedition. It's here that most visitors to the White Continent find themselves living out their ultimate polar adventure. This region, the most readily-accessible part of Antarctica, not only accommodates various scientific research bases but also showcases some of the planet's most captivating wildlife vistas.

One of the crown jewels of the Antarctic Peninsula is the spellbinding Lemaire Channel, a narrow passage framed by towering peaks and sculpted ice formations, offering a visual feast for every visitor. Shore excursions may lead to Petermann Island, where an enchanting spectacle unfolds, bustling colonies of Adelie penguins, elegant blue-eyed shags and audacious skuas create a vibrant tapestry of life. Amongst them, hulking elephant seals make their presence known, with their ponderous movements and commanding presence, truly embodying the grandeur of this frozen realm. This encounter with nature's marvels is bound to etch itself into your memory forever.

Overnight: Swan Hellenic SH Minerva, SH Vega or SH Diana
Meals included: Breakfast; Lunch; Dinner

Day 10 Antarctic Peninsula

Nestled amidst the awe-inspiring glaciers, colossal icebergs and snow-clad islands, the Antarctic Peninsula stands as the quintessential backdrop for any Antarctic expedition. It's here that most visitors to the White Continent find themselves living out their ultimate polar adventure. This region, the most readily-accessible part of Antarctica, not only accommodates various scientific research bases but also showcases some of the planet's most captivating wildlife vistas.

One of the crown jewels of the Antarctic Peninsula is the spellbinding Lemaire Channel, a narrow passage framed by towering peaks and sculpted ice formations, offering a visual feast for every visitor. Shore excursions may lead to Petermann Island, where an enchanting spectacle unfolds, bustling colonies of Adelie penguins, elegant blue-eyed shags and audacious skuas create a vibrant tapestry of life. Amongst them, hulking elephant seals make their presence known, with their ponderous movements and commanding presence, truly embodying the grandeur of this frozen realm. This encounter with nature's marvels is bound to etch itself into your memory forever.

Overnight: Swan Hellenic SH Minerva, SH Vega or SH Diana
Meals included: Breakfast; Lunch; Dinner



15-DAY CRUISE PACKAGE | SWAN HELLENIC LUXURY ANTARCTICA

The Itinerary

Itinerary 3

Day 11 Cruising

Sea days are rarely dull. Take the time to sit back and let the world go by. The ship's observation decks provide stunning views of the passing ocean. A day at sea gives you the opportunity to mingle with other passengers and share your experiences of this incredible trip or head to our library which is stocked full of reference books. Get an expert's view in one of our on-board lectures or perhaps perfect your photography skills with invaluable advice from our onboard professional photographers.

Overnight: Swan Hellenic SH Minerva, SH Vega or SH Diana

Meals included: Breakfast; Lunch; Dinner

Day 12 Ushuaia, Argentina

Arriving in Ushuaia this evening, you'll have the chance to explore the town while still using the ship as your home for the night.

Ushuaia, often called the southernmost city in the world, is nestled at the edge of Argentina's Tierra del Fuego province, surrounded by the dramatic peaks of the Andes and the icy waters of the Beagle Channel. Known for its stunning natural beauty, it serves as a gateway to the wild landscapes of Antarctica and the Southern Patagonian Ice Field. The city blends a rich history with vibrant culture, offering visitors a unique blend of outdoor adventures and a charming, small-town atmosphere.

Overnight: Swan Hellenic SH Minerva, SH Vega or SH Diana

Meals included: Breakfast; Lunch; Dinner

Day 13 Ushuaia, Argentina - disembark

At the appropriate time, you will be transferred to the airport for the return flight back to Buenos Aires.

Upon arrival into Buenos Aires, you will be met at the airport and transferred to your hotel to enjoy

the next 3 nights in this captivating city.

Overnight: Hilton Buenos Aires or similar, Buenos Aires

Meals included: Breakfast

Day 14 Buenos Aires - Day at Leisure

Today is your day to relish at your own pace. Delight in the sights of May Square, or Plaza de Mayo, a pivotal and iconic area in Buenos Aires, situated just behind the Government Palace (called 'Casa Rosada' or Pink House). It's a must-visit, as most images of the Pink House originate from this vantage point. Take a leisurely stroll down 9 de Julio Avenue renowned as the widest avenue globally. Nearby you will find the iconic Obelisk, the bustling Corrientes Avenue, and the prestigious Colon Theater. Wander through La Boca, a destination firmly etched on the bucket lists of many Buenos Aires enthusiasts. Here, you'll encounter the legendary vividly painted houses and the picturesque, El Caminito Museum and alley, both recognised as iconic landmarks of the city.

Overnight: Hilton Buenos Aires or similar, Buenos Aires

Meals included: Breakfast



15-DAY CRUISE PACKAGE | SWAN HELLENIC LUXURY ANTARCTICA

The Itinerary

Itinerary 3

Day 15 Buenos Aires

Today, continue your exploration of this vibrant and passionate city at your own leisurely pace. Begin by admiring *Floralis Generica*, an imposing metal flower sculpture nestled in the Recoleta neighbourhood of Buenos Aires. This magnificent artwork gracefully opens during the day and gracefully closes at night. On sunny days, it casts enchanting reflections in the shimmering water pool beneath its petals.

Make your way to Puerto Madero, a transformed district situated within the historic harbour of Buenos Aires. Today, it stands as a chic and upscale enclave, boasting a plethora of restaurants, cafes, corporate headquarters, and impressive skyscrapers. While in Buenos Aires, a visit to one of the city's most significant landmarks is a must: *Puente de la Mujer*, also known as the *Woman's Bridge*. This striking architectural marvel spans the heart of Puerto Madero, and the best part is, it's free to explore and cross.

Venture into the charming neighbourhood of San Telmo, the oldest in Buenos Aires, where you'll encounter a treasure trove of beautiful old buildings and traditional coffee shops and bars. This historic neighbourhood extends from Plaza de Mayo, branching out to the right of this central square. With each step, you'll delve deeper into the city's rich cultural tapestry. Enjoy your day of discovery!

Overnight: Hilton Buenos Aires or similar, Buenos Aires

Meals included: Breakfast

Day 16 Buenos Aires, Argentina - Australia (or New Zealand)

The time has come to begin your journey back home. At the appropriate time you will be picked up and transferred to Buenos Aires Airport for your flight home.

Please note: Due to flight scheduling and availability, some customers may be required to depart on day 15, to arrive on day 16. Additional accommodation will be provided for the extra night in Buenos Aires. Flight times will be indicated on your final documentation, which you will receive 4-6 weeks prior to departure.

Meals included: Breakfast

Day 17 Arrive In Australia (or New Zealand)

Welcome home!

We hope you have enjoyed your 17-day adventure to Antarctica!

Please note: Some flights may arrive +1 day later.

Meals included: None



15-DAY CRUISE PACKAGE | SWAN HELLENIC LUXURY ANTARCTICA

Tour Inclusions

HIGHLIGHTS

Embark on a once-in-a-lifetime journey with Swan Hellenic to Antarctica*

Discover pristine landscapes, astonishing wildlife and exciting expeditions

Immerse yourself in Buenos Aires' vibrant culture with sultry tango, delectable cuisine and more

Revel in the chance to spot colonies of inquisitive penguins and majestic blue whales

Seek out pods of playful Orca whales, Antarctic fur seals, Leopard seals, elephant seals and more

Cruise the famed Drake Passage, the crossroads of the Atlantic and Pacific oceans

Listen in as experts on the dedicated expedition team deliver in-depth lectures

Enjoy the comfort of Deck 7 where a heated outdoor pool and ample seating await, offering breathtaking vistas

Indulge in post-exploration bliss at the Observation Lounge aboard Swan Hellenic

Thrill to Deck 8's unparalleled vistas of Antarctica

Unwind in the onboard sauna or Jacuzzi while soaking in the mesmerising landscapes

Discover the Lemaire Channel, a picturesque passage with towering peaks and sculpted ice

*Medical clearance is required prior to boarding for all expedition cruises to Antarctica.

FLIGHTS

Return international full-service flights (economy class), departure city surcharges may apply

Return internal chartered flights from Buenos Aires to Ushuaia

CRUISE

Embark on a 9-night expedition cruise to Antarctica with the opulent Swan Hellenic (Itinerary 1)

Commence a 10-night expedition cruise to Antarctica with the luxurious Swan Hellenic (Itinerary 2)

Set sail on an 11-night expedition cruise to Antarctica with the luxurious Swan Hellenic (Itinerary 3)

Gratuities included for the ship's crew

Coffee, tea, soft drinks and selected alcoholic beverages are included 24 hours a day

Branded Swan Hellenic expedition parka and use of rubber boots in polar regions

Enjoy 24-hour room service

Lecture programs by an experienced expedition team and guest speakers

Standard Wi-Fi

Self-service laundry

One selected shore excursion or expedition activity per port of call (kayak not included, bookable for a fee onboard)

Experience Swan Hellenic's 12-person hard-hulled Zodiacs, that take guests off the boat

All Zodiac landings are included so you can get up close and personal with your majestic surroundings

ACCOMMODATION

4 nights of 5-star hotel accommodation in Buenos Aires, Argentina



15-DAY CRUISE PACKAGE | SWAN HELLENIC LUXURY ANTARCTICA

Tour Inclusions

DINING

30 meals including all meals while cruising (Itinerary 1)

33 meals including all meals while cruising (Itinerary 2)

36 meals including all meals while cruising (Itinerary 3)

Enjoy round-the-clock access to coffee, tea, soft drinks and a curated selection of alcoholic beverages while cruising

ESSENTIALS

Airline taxes and surcharges

Airport and cruise port charges plus taxes

TRANSFERS

All transfers as per itinerary

Important Information

**Please note: All information provided in this brochure is subject to both change and availability. Prior to purchase please check the current deal for up-to-date information. If you have already purchased this deal, the terms and conditions on your Purchase Confirmation apply and take precedence over the information in this brochure.*

Booking Information

After purchase, you will receive a receipt and a Purchase Confirmation, directing you to an online Passenger Information Form. You must complete the Passenger Information Form within 72 hours of purchase.

Any special requests, preferences and optional extras MUST be clearly stated in your Passenger Information Form. Any change requested after submitting your Passenger Information Form cannot be guaranteed, is strictly subject to availability and will incur surcharges as outlined in the Schedule of Fees below.

Please note: All countries and territories have different entry requirements in relation to vaccinations, quarantine/isolation periods and travel restrictions. Due to the evolving nature, we would ask all of our customers to monitor, meet and adhere to the specific requirements of their intended destination(s) in the lead-up to and immediately before travel, as well as any requirements post-travel upon their return.

Our Policies

Cancellation and Refund Policy

By placing a booking with us, you acknowledge the following important information:

- **we act as your booking agent;** TripADeal is a booking services provider, and curates the Travel Offers available on our website. We act as your booking agent, and we receive payment for the Booking Services as part of the booking price, however, we do not provide any of the Travel Services (flights, accommodation, tours or other products or services) included in your booking – the Travel Services are provided by a number of third party Travel Suppliers.

- **each booking is unique;** our Travel Offers are made up of a variety of different components and are, during the booking process, uniquely tailored to suit your requirements, for example, departure dates and ports, flight and room upgrades, tour inclusions, etc.

- **changes/modifications to your booking may not be possible;** once your booking has been made, changes or modifications may not be possible, and where possible, may incur a fee. It is important to ensure that the information you provide during the booking process is accurate and up to date, and that you read the Travel Offer carefully before placing your order.

- **Travel Offers are a package;** our Travel Offers have been curated into package offerings and must be used as a package – individual components cannot be used independently of the full package offering.

- **our Travel Offers are generally non-refundable;** in order to provide great value Travel Offers, we work with a variety of Travel Suppliers to find the best deals – this often means the Travel Suppliers' offerings are non-refundable to ensure the best price. We recommend that you obtain travel insurance as soon as you make a booking with us. If your plans change, you can receive a full refund (excluding credit card fees) if you cancel at least 12 months in advance to your scheduled departure date.

To read more about our Cancellation and Refund Policy, please [click here](#).

General Terms and Conditions

By placing your booking with us, you acknowledge and agree to our [Terms & Conditions](#), [Privacy Policy](#) and [Cancellation Policy](#).

Offer Essentials

This Travel Offer is valid for travel on selected dates until the 5th March 2028. This Travel Offer is priced per person based on a twin share.

Departure Dates & Surcharges

See checkout for live dates and availability.

Single Traveller Supplement

For solo travellers, a mandatory single supplement applies. Please call in and speak to one of our friendly reservation agents for more details.

Please note: Accommodation for single customers who are travelling on a tour or cruise package may be in a single room, depending on availability.

Child Policy

- No child discounts are offered. The full price applies to all children travelling with their parents.
- Valid for children 8 years old and over.

Please note: Children must be accompanied by a responsible adult, 21 years old and over, to travel. No unaccompanied minors are allowed.

Flights

Departure Cities

Sydney, Melbourne, *Brisbane, *Adelaide, *Perth, *Auckland

Departure City Surcharges

Brisbane: \$100 per person
Adelaide: \$100 per person
Perth: \$500 per person
Auckland: \$400 per person

International Flight(s)

Full-service airline(s) used

- Cabin Class: Economy Class

Please note: We cannot accommodate one-way flights. Travellers must take all included flights within the package, and any flights intentionally forfeited will result in later flights being subject to cancellation.

Please note: From Australia / New Zealand, the flying journey to your destination may take up to 35 hours, with up to 2 stops. One of those stops may be within Australia. This is provided as a guide only - actual flight duration can vary depending on availability and airline schedules. Your booking's final

Important Information

details will be confirmed to you via email once available.

Domestic Flight(s) Used

- Cabin Class: Economy Class
- Route: Buenos Aires - Ushuaia - Buenos Aires

Domestic Flight Information

Baggage allowance per person
1 x 23kg of checked baggage
1 x 8kg of carry on baggage

Preferred Airline Surcharge

- Not available

Arrive Early and Stay Behind Options

Fly out and return home up to 60 days pre and post your tour dates.

Arrive Early

Buenos Aires - From \$300 per person, subject to availability.
Santiago - From \$300 per person, subject to availability.

Stay Behind

Buenos Aires - From \$300 per person, subject to availability.
Santiago - From \$300 per person, subject to availability.

Please note:

This option incurs a fee for adjusting the departure or return dates. This fee does not include extra nights' accommodation, meals and/or airport transfers, which will be at your own cost. In addition, airport transfers listed as an inclusion on the Travel Offer are considered void in the event that you select an Arrive Early/Stay Behind option. As such, you will need to arrange your own transfers at your cost. We strongly advise against booking any pre or post-tour travel arrangements/accommodation until TripADeal confirms your flight details. If you choose to book before confirmation, we recommend opting for refundable reservations or having backup plans in case the tour does not proceed.

Internal Flights:

If you select to Arrive Early or Stay Behind into a city other than the one where the tour begins or concludes (where applicable), the package will include an internal flight to your destination. This offer applies only to the cities listed in our Arrive Early & Stay Behind Options. If you wish to forfeit this flight, please advise our friendly team at the time of purchase. Please note that the package's cost does not change when you choose to forfeit your connecting flight.

Please note: If you request to fly into cities not listed in our "Arrive Early & Stay Behind Options", we may be able to customise your itinerary. If possible, the flight's cost will be charged as an extra.

Cancellations & Changes:

Flight booking changes or cancellations after air tickets have been issued are not guaranteed and may incur additional fees and fare difference, subject to the airline cancellation and change policies. Flight changes are subject to availability at the time of booking.

High-Season:

A high-season Arrive Early or Stay Behind can be purchased for an additional charge, subject to availability. For pricing, please refer to the cart.

+ 60 days:

You can fly out up to 60 days before your package's start date, and/or return home 60 days after your package's end date. Should you wish to fly out or return home for more than 60 days from the tour, please contact us to request availability. Additional costs may apply.

Estimated dates:

Your estimated departure, return, and arrival dates are all subject to availability and may vary. The confirmed schedule for all flights will be provided when you receive your flight tickets. High season surcharges apply to flights departing between the below date ranges:

- 3rd April 2026 - 20th April 2026
- 26th June 2026 - 17th July 2026

- 18th September 2026 - 9th October 2026
- 12th December 2026 - 26th January 2027
- 19th March 2027 - 28th April 2027
- 19th June 2027 - 18th July 2027
- 11th September 2027 - 10th October 2027
- 10th December 2027 - 31st January 2028
- 1st April 2028 - 30th April 2028
- 1st July 2028 - 23rd July 2028
- 16th September 2028 - 15th October 2028
- 9th December 2028 - 3rd January 2029

Stopover Packages

* Santiago, Chile

Includes:

- 2, 3 or 5 nights in 4-star accommodation
- Daily breakfast
- Return airport transfers

For pricing, please refer to the payment cart at checkout.

- When a pre and post-tour stopover is chosen, the same stopover location must be chosen each way, due to the airline used.
- When selecting to Arrive Early for your tour in conjunction with a Stopover Package, your fly out date from home will take place before the stopover.
- When selecting to Stay Behind after your tour in conjunction with a Stopover Package, your stopover will take place before your final flight home.
- Stopover packages are subject to availability.
- In the event that a purchased stopover package and a purchased preferred airline upgrade are not compatible, you will have the option to receive a refund for the preferred airline upgrade or be offered an alternative stopover city option, e.g if you choose to fly with Singapore Airlines you cannot stopover in Dubai.
- Blackout dates apply to flights departing between the below date ranges:
 - 2026: Christmas and New Years Eve - 18 December 2026 to 3 January 2027
 - 2027: Christmas and New Years Eve - 20 December 2027 to 3 January 2028

Important Information

- 2028: Christmas and New Years Eve - 22 December to 2 January 2028

Flight Class Upgrades

Business Class: For pricing, please refer to the payment cart at checkout.

Please note:

- *Flight upgrades are subject to availability and pricing changes (if we cannot fulfil your request, the upgrade cost will be refunded).*
- *On any upgrade purchase, short-haul flights and domestic flight sectors are not guaranteed.*

Outbound Flights

Please note: Due to flight scheduling and availability, some departures may occur on Day 0. Affected customers must be available to depart the day before. Flight times will be indicated on your final documents, issued 4-6 weeks before departure.

Missed Flights

If you fail to arrive for your outbound flight, you risk all flight and land arrangements in your destination being automatically cancelled by the airlines and land operator, respectively. Additional fees may apply to reinstate these services. If you miss your flight for whatever reason, please contact us as soon as possible to make arrangements.

Cruise

Medical Disclaimer

Travel to Antarctica is physically demanding, and our Travel Suppliers require all guests to obtain medical clearance before departure even if you don't intend to disembark at Antarctica. This involves completing a medical form and may require medical clearance from a doctor, which could incur additional costs. Any guests who fail to provide the necessary medical documentation will be denied boarding.

Swan Hellenic's SH Minerva, SH Vega or SH Diana

Introducing SH Minerva, launched in 2021, SH Vega, a sparkling gem embarking on its

maiden voyage in July 2022, followed by the arrival of SH Diana in early 2023. These 5-star boutique ships, designed with Scandinavian elegance, offer an intimate immersion in the voyage's splendour. Allow yourself a moment of reprieve to acquaint yourself with these extraordinary expedition vessels. Boasting a PC5 ice-strengthened hull and expansive stabilisers, your journey will be exceptionally smooth. With just 120-140 crew members and 152-196 guests spread across 9 decks, an intimate experience awaits.

The generous public spaces ensure uninterrupted, panoramic views, keeping the destination ever-present. Deck 8 offers unparalleled vistas. Following a workout in the state-of-the-art gym, luxuriate in the sauna or jacuzzi while relishing the breathtaking scenery. In the Swan Restaurant, savour breakfast, lunch, and dinner featuring international and locally-inspired cuisine, spotlighting the finest regional ingredients from your unique destinations. Deck 7 reveals a heated outdoor pool and inviting poolside seating for scenic indulgence. Unwind in the Observation Lounge with your preferred libation, forging connections with fellow guests. The Club Lounge, combining 24-hour tapas-style dining with sweeping ocean vistas, is a sanctuary of indulgence. Anticipate a voyage that marries luxury with adventure.

Onboard currency:

USD

Packing list

As Antarctica is one of the most remote, rarely visited, parts of the world, knowing what to pack for your voyage isn't always easy. So, in case you're unsure what clothes to pack for a cruise to Antarctica, below is a simple cruise outfit planner.

Plan ahead

It's best to pack thoughtfully for Antarctica's climate. Unless you travel there frequently, there's no reason you'd know what clothes to bring on a cruise to Antarctica. Everyone experiences the cold

(and warmth) differently, but it pays to bear in mind daily temperatures in the Antarctic Peninsula can range from well below freezing to the upper 4°C. Plus, windchill can make things feel much colder, especially as you'll be spending a lot of your time outdoors in places that are subject to strong winds.

Stay warm

When you're thinking about what clothes to take on a cruise, it's worth remembering that the outside temperature in Antarctica can feel much colder than the reading on a thermometer. So it's recommended you wrap up extra warm. Layering is a great way to do this. Wearing several lightweight, loose-fitting layers is better than opting for one heavier layer. This is because the different layers allow for pockets of air between each item of clothing, which provides extra insulation, and it means you can remove or add layers when your body temperature changes.

Choosing clothes

A lot of the action on an expedition cruise happens outside, so dress codes are very relaxed on these voyages. Pack clothes that are comfortable and easy to wash. And it pays to consider how you're going to pack everything. For instance, do you know how to pack a cocktail dress in a suitcase? Is a cocktail dress something you'll definitely need? Some guests find it helpful to choose their clothes, then go back and edit their choices after an hour or so.

What to pack

For the polar regions you'll need casual trousers, jeans, long-sleeved t-shirts and a thin jumper or bodywarmer. You'll be cosy and comfortable when you're inside the ship, but it's always good to have warm clothes handy for when something out on deck takes your interest. Waterproof trousers, to wear over your pants or thermal underwear, are essential for Zodiac trips and land excursions. You'll need to bring a warm, windproof hat that covers your head and ears, and a collar scarf to protect your neck and chin from

Important Information

the elements. Polarised sunglasses will help reduce the glare from the snow and ice, protect your eyes from UV rays, and help you see the details of the Antarctic scenery better. It's also worth packing mittens, ski gloves and insulated glove liners to keep your hands warm and dry. Also, you might want to pack swimming and fitness gear if you plan to visit the spa, pool or fitness centre. Evenings are informal, but maybe pack a couple of casual shirts, and skirts or dresses for dinner, and something stylish for special occasions, such as cocktails with the Captain. When it comes to footwear, keep it light and easy to pack. Swan Hellenic will provide a pair of rubber Muck boots for Zodiac excursions and onshore landings, so a pair of lightweight trainers will be fine. Steer clear of bringing high-heels, especially stilettos, as the seas can get rough at times, and you'll need to keep your balance.

Expedition extras

When you travel to the polar regions, a Swan Hellenic expedition parka will be waiting for you in your stateroom on the first day of the cruise. This is yours to keep after your voyage. Your parka is water and windproof, and features an adjustable hood with fleece lining for added warmth, a visor for optimal visibility in all conditions, and a high collar and elongated cuffs to give you extra protection. You'll also receive a branded waterproof backpack, which will be useful for protecting your camera and any other electronic gear that you want to bring for shore landings.

Cabins/Staterooms:

Oceanview Staterooms: 19m² - 20m²

Light, bright and crafted from natural materials, Oceanview staterooms feature 2 single beds, a bedroom and living room and a luxurious ensuite bathroom. All feature panoramic sea views, original works of art, plush couches, premium pocket-sprung mattresses, ensuite bathrooms with glass-enclosed rain showers, and Egyptian cotton towels,

bathrobes, and sheets. A pillow menu offers customised head and neck comfort during rest. At the same time, a large flat-screen TV, an espresso machine with Illy premium coffee, tea-making facilities with the finest Kusmi teas, and a minibar with refreshments enhance relaxation at any time. In-room dining is, of course, available at all hours.

Balcony Staterooms: 25m²

Staterooms feature 2 single beds, a bedroom, a living room, a luxurious bathroom and your own 5m² balcony. All feature panoramic sea views, original works of art, plush couches, premium pocket-sprung mattresses, ensuite bathrooms with glass-enclosed rain showers, and Egyptian cotton towels, bathrobes, and sheets. A pillow menu offers customised head and neck comfort during rest. At the same time, a large flat-screen TV, an espresso machine with Illy premium coffee, tea-making facilities with the finest Kusmi teas, and a minibar with refreshments enhance relaxation at any time. In-room dining is, of course, available at all hours.

Please note:

- *All cabins are subject to availability; some cabins may have restricted views.*
- *Cruise cabins are booked on a guaranteed basis and are assigned by the cruise line prior to departure.*

Cruise Arrival and Departure Times:

Please keep in mind that the provided cruise arrival and departure times are an approximate and will be finalised upon receipt of your cruise tickets.

Accommodation

Accommodation Used:

5 Star Properties (Self-Rated)

Buenos Aires, Argentina: Sofitel Buenos Aires, or Hilton Buenos Aires

Please note: Accommodation/rooms offered are based on a lead-in room type and are subject to availability based on seasonality. In the instance a property is not available, a

similar standard of accommodation will be provided. Properties will be confirmed and included in your travel pack, which you will receive 4-6 weeks before travel.

Extra Nights

Not available.

Please note: If you are interested in booking additional nights of accommodation pre or post-tour, please wait until you receive your travel documentation approximately 4-6 weeks before departure for the confirmed list of hotels. If booking your own additional accommodation directly with the hotel, please be aware that you may be required to change rooms at the start/end of your tour.

Maximum Room Capacity

2 people.

Triple Share

Not available.

Bedding Configuration

Twin or double (subject to availability).

Optional Tours/activities

- Some tours or shore excursions require minimum numbers to operate.
- Shore excursions can be booked/reserved directly with the cruise line before travel (subject to availability)
- Shore excursions can also be booked whilst onboard (subject to availability).
- Shore excursion programmes and itineraries may vary depending on local conditions and/or any unforeseen events concerning the timing on the day of the tour. Some excursions are very popular, and therefore availability cannot always be guaranteed, it is advisable to book in advance to avoid disappointment.

Exclusions

- Visa fees and requirements
- Domestic transfers and flights not stated in the deal offer
- Meals/beverages not stated in the deal offer
- Optional gratuities/tipping
- Optional activities/tours

Important Information

- Personal expenses
- Travel insurance
- Any costs associated with an interruption to your tour as a result of an airline schedule change or cancellation
- Mandatory city tax

Gratuities / Tipping

Please note: Tipping for services provided is always a matter of personal discretion; however, please be aware that many locals consider tipping part of their normal remuneration, and they may approach you for payment; there's no need to be intimidated by the request.

Cruise

Gratuities (tips) are included for the cruise staff's services throughout this tour's cruise component.

Other Important Information

TOUR GUIDE VS. TOUR LEADER

Tour Guide:

Often locals with intimate knowledge of an area, its culture, and history. Their role entails providing commentary, routing the tour, and seeing that people have a good time. They are a licensed, qualified expert who supplies specific information on the history, art, architecture and culture of the city/village/attraction where they are guiding the tour. The guide meets the group at the required place and leaves it at the end of the tour; they do not travel with the group.

Tour Leader:

An experienced person tasked with ensuring the smooth operation of tours, as well as providing practical support to passengers throughout the whole trip. Their role primarily includes assisting with accommodation, transportation between locations, and communication with tour guides at each stop. A tour leader may provide general guidance around a city or village and offer information on the place visited on the bus. However, they are not required to have specific art, architecture, or historical knowledge. They are not

allowed to provide a guided tour or commentary of a city/village/attraction once there and, if caught doing so, can be fined.

Please note: Tour leaders/guides are not a standard inclusion in all travel offers. Tour leaders/guides will only be made available when required to enhance the experience of the destination featured.

CLIMATE & AVERAGE TEMPERATURES

Buenos Aires

From November to March, Buenos Aires experiences its warm and vibrant summer season, characterised by high humidity and plenty of sunshine. In November, the city transitions out of spring with pleasant highs around 25°C and lows of 16°C, but as the season peaks in January, it becomes quite hot with average daily highs of 29°C to 30°C—though heatwaves can occasionally push temperatures well above 35°C. February remains warm and is historically the rainiest month, often featuring sudden, heavy thunderstorms that provide brief relief from the humidity. By March, the intense heat begins to mellow, returning to comfortable averages between 19°C and 26°C, making it one of the most popular times for exploring the city's outdoor parks and cafes.

Antarctica

In Antarctica, the period from November to March marks the austral summer, offering the mildest conditions of the year and up to 24 hours of daylight. Along the Antarctic Peninsula, where most visitors travel, temperatures typically hover around freezing, with average highs climbing to 1°C or 2°C and lows around -2°C to -3°C, though sunny days can occasionally reach 10°C. November begins the season with averages around -1°C, while January serves as the warmest month; by March, temperatures start to drop more significantly to highs of -2°C and lows of -6°C as sea ice begins to reform.

Weather

We always suggest referring to an online source for the most up-to-date weather

information for your destination/s.

FLIGHTS

Seat Selection & Frequent Flyer Points:

We do not arrange seat selection. It is essential to highlight that some airlines do not allow pre-selected seats. We strongly suggest you contact the airline directly with seating allocation requirements and/or arrive at the airport earlier to arrange your seating. While we do not add frequent flyer member details to bookings, you can do this directly with the airline once you have your flight information.

Dietary Requests

Meal options and availability differ between airlines and routes therefore not all dietary requests can be accommodated. If your flight includes meals we will select the most suitable option available based on the dietary requirements you have specified. All meal requests are subject to airline approval and are not guaranteed, therefore we recommend preparing for your flight by bringing appropriate food for yourself, as required.

Passport Validity:

Customers must provide valid passport details either at the time of purchase or no later than 90 days before the departure date. Failure to do so may result in the cancellation of the booking. Customers will be responsible for any costs and fees incurred in this instance.

CRUISE

Embarkation / Disembarkation:

- Begins approximately 2 hours after docking.
- Due to security reasons, all guests must be on board 2 hours before sailing.
- Itineraries are subject to change at any time without notice.
- Check your specific sailing for exact departure and arrival times. All times are local to the port.

Cruise Loyalty Discounts:

Important Information

Please note: Travellers must contact the cruise line directly upon receiving their travel documents in order to request any membership benefits they may be entitled to.

Meals:

For meals not included, the tour leader (when available) will offer assistance with reservations, suggestions and directions to local restaurants. It is your responsibility to notify us of any dietary requests/requirements.

Please note: We will do our best to meet your requests/requirements; however, we cannot guarantee that we will always be able to.

Luggage:

You will be responsible for all your personal belongings whilst on tour. You must carry your own luggage from the vehicle to the hotel room and back to the vehicle. The driver will assist with the uploading and unloading of bags from the vehicle.

OTHER

Mobility:

If you require wheelchair access please contact our friendly sales and service team to inquire on your behalf.

Fitness Level Required:

Adventure (and spontaneity) create some of the best travel memories. Bear in mind, your home schedules and timings might not be adhered to on tour - it's all part of the fun!

A Moderate level of fitness will be required.

Expect a moderate pace of touring with a focus on guided tours that may include full days with extended activity, guided city tours or nature walks. You will require a general level of fitness for unassisted navigation of stairs and inclines, longer distances with possible periods of standing when visiting sites, walking on sloping, uneven ground or elevations. You will be responsible for your own luggage and have the ability to board all modes of transport without assistance. Please note: Many

areas may be inaccessible to wheelchairs or mobility scooters, where the unassisted use of personal walking sticks and other aids may be required. Although some assistance may be available, every traveller should be self-reliant during all aspects of their travel.

Please note: It is expected that every traveller must be self-reliant and able to undertake all aspects of their own travel. Please speak to your booking agent about your personal circumstances and any assistance requirements to ensure this tour is right for you.

Please note: If you have any concerns, please consult your healthcare provider prior to purchase/travel.

Yellow Fever:

A valid international certificate of vaccination against Yellow Fever is required in many countries. You may need to present this on arrival at the airport or border crossing. Some countries will refuse entry if you are unable to present your certificate. It's also common for your home country to request a Yellow Fever certificate upon arrival.

You must check with your doctor well before leaving home about the Yellow Fever requirements for the countries you'll be visiting.

Sightseeing:

Please note: If entry to a site is affected by changes in operating hours or public holiday closures, your itinerary, where possible, may be adjusted, or a similar activity will be offered in its place (subject to availability).

Wildlife sighting:

TripADeal cannot guarantee animal sightings on tour. Wildlife are unpredictable and factors such as weather conditions, predatory fear and animal movements can impact sightings.

Shopping:

Shopping overseas can be a daunting and confusing experience, especially when there is a language barrier. Please be very

cautious when foreign currencies and prices are involved. If paying by credit card, please pay close attention to the amount you are being charged and keep all your receipts.

Do not make any purchases you are not comfortable with or feel pressured into. If you are uncertain or need assistance with the language barrier, please seek assistance from your Tour Guide/Leader. Please refer to our [Terms and Conditions](#) regarding shopping for further information.

Visas

Argentina

Australian passport holders are visa exempt for a stay of up to 3 months. Please Note: Effective immediately, all international travellers to Argentina must hold valid travel insurance with medical coverage. This insurance may be requested and verified upon arrival in the country. Argentina's public healthcare system will no longer provide free medical services to foreign nationals. It is therefore essential that you obtain appropriate insurance before your departure.

Chile

As of 17th September 2025 tourist visas for Chile are not required if travelling on an Australian Passport. You can stay in Chile for up to 90 days without a visa. If you're unsure whether you need a visa, contact the nearest embassy or consulate of Chile.

Important:

- *Please start arranging your visa three weeks before departure to account for any delays due to consulate operating hours.*
- *Visa rules are subject to change. Please check with the nearest embassy, consulate or immigration department of the destination/s you are visiting once you receive your travel documentation to ensure you have the most up to date information.*

Important Information

- *It is your responsibility to be travel-ready and ensure that you are aware and comply with any destination or travel requirements, including the validity of all required travel documents.*
- *Passengers who are not Australian citizens must also check with the respective consulate or visa agency to determine what their visa requirements are and what personal identification is required.*
- *It is also important to note that some areas of employment, such as journalism, government authorities and charity organisations, may have additional restrictions in applying for visas. This may, in turn, affect the type of application required.*

Travel Insurance

Embarking on your next trip is exciting, and while you hope the unexpected does not happen, it is best to be prepared. We strongly recommend you take out travel insurance when making your booking. Whether it's a potential medical emergency, a flight cancellation, a delayed suitcase, or an unforeseen event, it's important to ensure you're adequately protected. For more information or advice visit <https://www.tripadeal.com.au/travel-insurance>

Schedule Of Fees

Voluntary Changes

This includes booking changes requested by you, including but not limited to those changes requiring an airline ticket or a Purchase Confirmation reissue.

- Changes - \$100 per booking and any additional charges applied by the airline/cruise company/accommodation/other travel providers.

Name Changes Due To Passenger Error

- If the incorrect name has been provided, charges of \$100 per booking and any additional charges applied by the airline/cruise company/accommodation/other travel providers.

Supplier Fees

In the event the tour package you have purchased is unable to proceed, and/or a Travel Supplier is unable to fulfil the tour due to external circumstances (Limitation of Liability e.g. a Force Majeure event), there may be a fee or amount of money that is withheld by our Suppliers and is unrecoverable. This may be due to non-refundable airline tickets, cancellation penalties with cruise cabins or unrecoverable payments with our land/accommodation partners. If refunds are not available from Suppliers, we will endeavour to obtain a travel credit on the best terms available and communicate these outcomes to you. In the event we are unable to obtain a refund or travel service credit, or part thereof, this cost is passed on to the customer as a Supplier Fee.