



Kruger National Park & Mozambique

SOUTH AFRICA ● ESWATINI ● MOZAMBIQUE

The Offer

Dust off your explorer hat for an epic 17-day African adventure. Immerse yourself in Eswatini's vibrant Swazi culture, discover Mozambique's sun-kissed beaches, track legendary wildlife in Kruger National Park, and more.

Your adventure begins in the Kingdom of Eswatini, at the tranquil Mlilwane Game Sanctuary. Experience a taste of authentic Swazi tradition while staying in unique beehive-shaped huts. Enjoy guided woodland walks alongside grazing zebras and hippo-filled waterholes. Then, keep your binoculars ready as you travel through the lowveld to Hlane Royal National Park in search of white rhinos, lions, elephants and more.

Next, watch the wild savannah transform into the sparkling turquoise seas of Mozambique. Arrive on the golden shores of Xai-Xai, then board a traditional dhow boat to cruise to the island paradise of Magaruque. Discover Portuguese heritage and Art Deco buildings on a city tour of Maputo. Unwind under the tropical sun on Barra Beach and snorkel among the vibrant coral reefs of the Bazaruto Archipelago, on this unforgettable Indian Ocean escape.

Return to the mainland and dive into one of the world's most iconic wildlife sanctuaries, Kruger National Park. Wake to the sounds of the bush at Nkambeni Safari Camp, a fully-fenced premier eco-camp located inside Kruger National Park. Join expert rangers on thrilling game drives to track lions, leopards and the rest of the Big 5 wildlife. From sunrise drives to sunset sundowners by the pool, this is the ultimate safari experience you've been dreaming of.

This African wildlife adventure includes return international full-service flights, 15 nights of hotel and safari camp accommodation, 23 meals, English-speaking driver/guide and more.

Want more? Add your own optional adventure on Day 14 to track the Big Five on an afternoon safari or discover Blyde River Canyon on a Panorama Route tour.

Offer available for a limited time or until sold out. TRIP A DEAL PTY LTD: 50149240433

Updated: 26 Jun 2026 11:35:41

Have a question about this deal? We're here to help.
Call our friendly team on [1300 158 912](tel:1300158912)

1

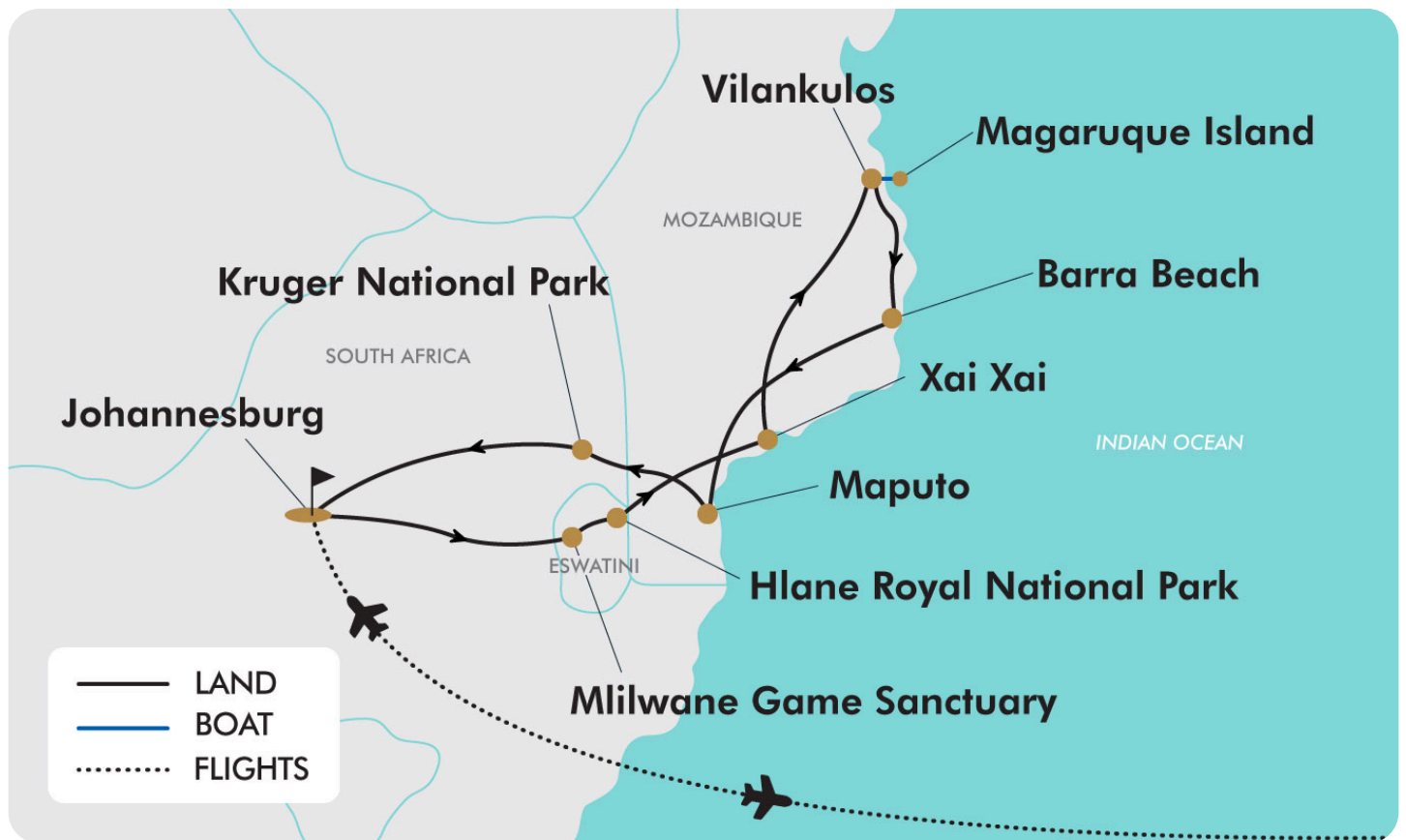
FREQUENT
FLYER 

 Trip
a Deal



17-DAY TOUR PACKAGE | KRUGER NATIONAL PARK & MOZAMBIQUE

The Map



Offer available for a limited time or until sold out. TRIP A DEAL PTY LTD: 50149240433

Updated: 26 Jun 2026 11:35:41

Have a question about this deal? We're here to help.
Call our friendly team on 1300 158 912



17-DAY TOUR PACKAGE | KRUGER NATIONAL PARK & MOZAMBIQUE

The Itinerary

Day 1 Australia (or New Zealand) - Johannesburg, South Africa

Today depart for Johannesburg, South Africa. Upon arrival in Johannesburg, a complimentary hotel airport shuttle is available. Check-in is from approximately 14:00. Should you arrive earlier, your luggage can be stored at the hotel. Enjoy the remainder of the day at leisure.

Please note: Some customers may depart on Day 0 and arrive on Day 1.

Overnight: Garden Court OR Tambo International Airport or similar, Johannesburg

Meals included: In-Flight

Day 2 Johannesburg, South Africa - Mlilwane Game Sanctuary, Eswatini

Today, depart Johannesburg and cross the border into Eswatini, formerly known as Swaziland. Continue to Mlilwane Game Sanctuary, set in what is arguably Eswatini's most beautiful region, the aptly named 'Valley of Heaven'.

Mlilwane Game Sanctuary is a natural wonderland of grassy plains, granite mountains, cascading waterfalls and abundant wildlife. Located relatively close to the reserve are the towns of Malkerns and Ezulwini, famous for their many craft shops and other attractions. Stay in traditional beehive-shaped huts and enjoy breakfast overlooking hippo and crocodiles wading in the water and resting on the banks.

Approximately 393-kilometre day.

[Mlilwane Game Sanctuary Rest Camp](#)

Mlilwane Game Sanctuary is Eswatini's outdoor lover's paradise! Stay in a traditional beehive hut, with an en suite, electricity, bedding, towels and a kettle. Enjoy a variety of outdoor activities such as game drives, mountain biking, horse riding, and self-guided walking trails.

Overnight: Mlilwane Game Sanctuary Rest Camp or similar, Mlilwane Game Sanctuary, Eswatini

Meals included: Breakfast; Dinner

Day 3 Mlilwane Game Sanctuary

Today, enjoy a morning bush walk where your guide will take you along trails, beginning at Mlilwane Game Sanctuary.

The diverse habitats in close proximity allow for great sightings, including woodland, grassland, forest and aquatic species. Two exciting walking trails have been established within the Rest Camp grounds, both following a similar route. The Botanical Trail highlights about 70 tree and plant species, most of which were planted by hand in the 1960s. The walk is estimated between 1.5 – 2 hours.

After, return to camp and enjoy the remainder of the day at leisure.

Overnight: Mlilwane Game Sanctuary Rest Camp or similar, Mlilwane Game Sanctuary, Eswatini

Meals included: Breakfast; Dinner



17-DAY TOUR PACKAGE | KRUGER NATIONAL PARK & MOZAMBIQUE

The Itinerary

Day 4 Mlilwane Game Sanctuary - Hlane Royal National Park

Today, travel from Mlilwane Game Sanctuary to Hlane Royal National Park. Situated in Eswatini's Lubombo Region, Hlane Royal National Park is the country's largest protected area covering 30,000 hectares of Swazi bushveld. The landscape is characterised by ancient hardwood vegetation, shallow pans, and lowveld grasslands. The park is home to lions, elephants, white rhinos, and leopards with an array of diverse bird life, including the highest density of nesting white-backed vultures in Africa.

Upon arrival, check into Hlane Royal National Park Ndlovu Camp, then embark on a safari game drive [1.5-hour activity] in the Swazi bushveld in Hlane Royal National Park. The drive focuses on the white rhino, so keep your eyes peeled and your camera ready for these incredible sightings.

Approximately 96-kilometre day.

Hlane Royal National Park Ndlovu Camp

The camp is in the active heart of the national park and offers a reception, curio shop, restaurant and activity centre. Stay in the twin-bed Rondavel huts nearby the main camp area. All huts have an en-suite bathroom with a shower. The camp does not have electricity and everything runs on gas/paraffin.

Overnight: Ndlovu Camp or similar, Hlane Royal National Park, Eswatini

Meals included: Breakfast; Dinner

Day 5 Hlane Royal National Park - Xai Xai, Mozambique

After breakfast, check out and depart for Xai Xai, crossing the border to Mozambique.

Set along the magnificent Mozambique coast, the city of Xai Xai serves as the capital of the Gaza Province. Discover Xai Xai's long stretch of beach and crystal-clear warm waters, plus a series of freshwater lakes that offer kayaking, paddle skiing, windsurfing and excellent bird watching. Running along the coast, a coral reef creates the ideal snorkelling spot and protects the beach from the crashing waves of the Indian Ocean.

Approximately 331-kilometre day.

Overnight: Go Wild Resort or similar, Xai Xai, Mozambique
Meals included: Breakfast; Dinner

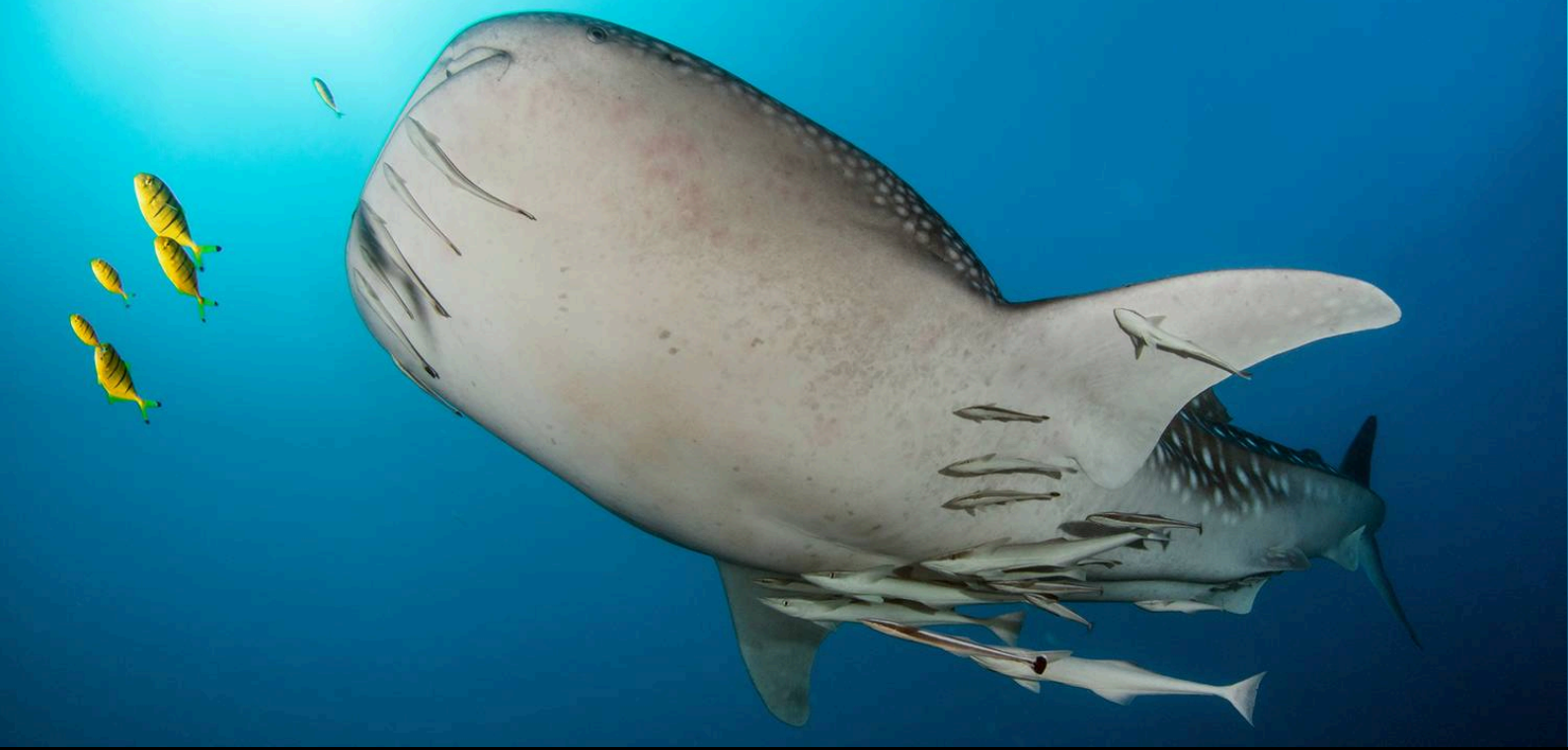
Day 6 Xai Xai - Vilankulos

Continue your journey to Vilankulos, located in the Mozambican province of Inhambane.

Vilankulos is a laidback town offering beautiful beaches lapped by crystal-clear turquoise waters, and a lively nightlife, perfect for a seaside escape and a great base for exploring the idyllic islands of the Bazaruto Archipelago. Spend time at leisure, possibly jump on a traditional dhow boat and venture to the pristine Bazaruto Archipelago, browse bustling local markets for fresh fruit and handmade souvenirs, or spend the day soaking up the sun on an array of idyllic beaches. Other popular activities include horse riding, game fishing, kitesurfing, scuba diving, snorkelling and sailing.

Approximately 501-kilometre day.

Overnight: Sailaway Camp or similar, Vilankulos, Mozambique
Meals included: Breakfast; Dinner



17-DAY TOUR PACKAGE | KRUGER NATIONAL PARK & MOZAMBIQUE

The Itinerary

Day 7 Vilankulos - Magaruque Island - Vilankulos

Today, cruise on a dhow boat to Magaruque Island for a full-day excursion departing at 08:00 and returning around 16:15.

Situated within the Bazaruto Archipelago, off the coast of Mozambique, the island of Magaruque beckons with its unspoiled charm. Pristine, palm-fringed beaches and the crystalline waters of the Indian Ocean await the discovery of vibrant coral reefs teeming with marine biodiversity (snorkelling equipment is provided on the dhow). The island features an historic lighthouse and a serene natural landscape of tranquil shorelines and captivating underwater adventures.

Overnight: Sailaway Camp or similar, Vilankulos, Mozambique
Meals included: Breakfast; Dinner

Day 8 Vilankulos - Barra Beach

Today, depart Vilankulos and travel to Barra Beach where you will spend the next three nights.

Resting on the southeastern shore of Mozambique, roughly 25 kilometres from Inhambane, the magnificent Barra Beach (or Barra) is an idyllic holiday destination. Pristine, gorgeous soft sands line the warm turquoise Indian Ocean waters. The beach is lined by coconut trees and wonderful beach resorts. Brightly coloured fish inhabit the reefs offshore, making this an excellent spot for scuba diving. There are also ample opportunities for fishing, surfing, kite surfing, quad biking, safari tours, dhow trips to the breathtaking Pansy Islands, and guided walks through the mangroves (additional costs apply). Try a little bar hopping to indulge in the delicious local cocktails or discover beachside restaurants where you could dine on culinary tropical delights.

Approximately 316-kilometre day.

Overnight: Bay View Lodge or similar, Barra Beach, Mozambique
Meals included: Breakfast; Dinner

Day 9 Barra Beach - Day at Leisure

Enjoy a day at leisure at beautiful Barra Beach, where powdery white sands meet the warm waters of the Indian Ocean. Spend your time relaxing by the beach, swimming in the turquoise sea, or simply soaking up the laid-back coastal atmosphere.

Overnight: Bay View Lodge or similar, Barra Beach, Mozambique
Meals included: None

Day 10 Barra Beach - Tofo - Barra Beach

Depart on a day trip to Tofo this morning.

Set on the scenic Ponta da Barra peninsula in southeastern Mozambique, Tofo is a popular small fishing village and is considered one of the world's premier dive destinations. Tofo's curved beach is perfect for swimming and is lined with a number of lively beach bars, restaurants, and a small local market. The smaller Tofinho Beach is quieter and provides a great spot for surfing. Just beyond the shores lie pristine coral reefs inhabited by an impressive array of marine life including dolphins, manta rays, and whale sharks.

Overnight: Bay View Lodge or similar, Barra Beach, Mozambique
Meals included: None

Day 11 Barra Beach - Maputo

Today, depart for Maputo, upon arrival enjoy a city tour with your guide.





17-DAY TOUR PACKAGE | KRUGER NATIONAL PARK & MOZAMBIQUE

The Itinerary

Mozambique's capital, Maputo, is known for its well-preserved Portuguese colonial architecture. With its beautiful art deco buildings and its exceptional setting on a hill overlooking the glittering Maputo Bay, the city once sparkled as the 'Riviera' of Southern Africa. Visit the local train station, see the statue of Samora Machel, and admire Maputo's most iconic historic landmark, the Casa de Ferro (Iron House), a striking three-storey structure built in 1892 by associates of Alexandre Gustave Eiffel, then explore vibrant local market stalls.

Return to the hotel and enjoy the remainder of the day at leisure.

Approximately 501-kilometre day.

Overnight: Southern Sun or similar, Maputo, Mozambique

Meals included: Dinner

Day 12 Maputo, Mozambique - Kruger National Park, South Africa

After breakfast, depart and cross the border back into South Africa. Continue to your camp, located within the magnificent Kruger National Park.

Stretching over more than two million hectares, the famous Kruger National Park is one of the world's largest game reserves and a truly remarkable destination. Experience fantastic diversity, from changing scenery and ecosystems to an impressive array of animals, plant life and birdlife. The park is home to over 130 mammals and over 500 bird species. Learn about this area's prehistoric past and search for abundant wildlife, including the famed Big Five. The diversity and sheer density of wildlife make Kruger National Park an unforgettable and once-in-a-lifetime experience.

Approximately 114-kilometre day.

Nkambeni Safari Camp

Nestled in the heart of one of the most famous wildlife conservation areas in the world, Nkambeni Safari Camp welcomes you to Big Five country. Here, in the world-renowned Kruger National Park, thrilling up-close and personal wildlife experiences await you in an exclusive-use 11,500 hectare private concession. Specifically designed to leave the smallest possible footprint in this pristine wilderness, the 150 en-suite safari tents are tastefully decorated to provide comfort and an authentic African bush ambience. For your comfort, each room has a mosquito net, en-suite bathroom and air-conditioning.

Overnight: Nkambeni Safari Camp or similar, Kruger National Park, South Africa

Meals included: Breakfast; Dinner

Day 13 Kruger National Park - Full-Day Safari Game Drive

Set out early on an unforgettable full-day game drive through the iconic Kruger National Park. Accompanied by an experienced guide, explore the park's vast landscapes in search of Africa's incredible wildlife, searching for the famous Big Five: lion, leopard, elephant, rhino and buffalo. As you travel through savannahs, riverbeds and bushveld, enjoy exceptional opportunities to spot a wide variety of animals and birdlife while learning about this remarkable ecosystem. Throughout the day, stop at rest camps within the park where you can enjoy breakfast, offering the chance to relax, browse the gift store, refresh and take in the unique atmosphere of the African bush.



17-DAY TOUR PACKAGE | KRUGER NATIONAL PARK & MOZAMBIQUE

The Itinerary

Overnight: Nkambeni Safari Camp or similar, Kruger National Park, South Africa

Meals included: Breakfast; Dinner

Day 14 Kruger National Park - Day at Leisure

Today, enjoy a day at leisure or choose to embark on an optional activity.

Optional Activity: Full-Day Panorama Tour

Discover some of South Africa's most spectacular scenery on a full-day tour along the famous Panorama Route. Travel through the breathtaking landscapes of the Blyde River Canyon Nature Reserve, one of the largest and most scenic green canyons in the world. Visit the fascinating Bourke's Luck Potholes, where centuries of swirling water from the Treur and Blyde Rivers have carved striking cylindrical rock formations and colourful pools into the sandstone. Walk along the network of bridges and pathways to admire this unique geological wonder. Continue to the iconic Three Rondavels Viewpoint, where three towering rock formations rise dramatically above the canyon, resembling traditional African rondavel huts. From this spectacular vantage point, enjoy sweeping views over the vast canyon and surrounding wilderness. Your journey also includes a stop at the famous God's Window, renowned for its breathtaking panoramic views across the lush Lowveld. On a clear day, gaze out over forests, deep valleys, distant mountains and cascading waterfalls, making it one of the most awe-inspiring viewpoints along the Panorama Route. Please see the current pricing in Important Information.

Optional Activity: Afternoon Safari Game Drive

Enjoy an afternoon game drive in Kruger National Park, spotting wildlife across the savannah and keeping an eye out for the Big Five. Please see the current pricing in Important Information.

Please note: Due to timing, only one of the above activities can be selected.

Overnight: Nkambeni Safari Camp or similar, Kruger National Park, South Africa

Meals included: Breakfast; Dinner

Day 15 Kruger National Park - Johannesburg

Start your day with an early morning game drive, taking in the sights and sounds of the bush before heading to Johannesburg. Upon arrival, check in to your hotel and spend the evening at your leisure.

Approximately 415-kilometre day.

Note: This game drive will be conducted in the Nomad vehicle before departing for Johannesburg.

Overnight: Garden Court OR Tambo International Airport or similar, Johannesburg

Meals included: Breakfast

Day 16 Johannesburg - Australia (or New Zealand)

This morning, enjoy breakfast at the hotel before checking out. At the appropriate time for your international flight, make use of the complimentary hotel shuttle bus to transit to the airport in time for your international flight.

Please note: Check the exact shuttle pickup times with the hotel upon arrival as the shuttle departs every half hour.



17-DAY TOUR PACKAGE | KRUGER NATIONAL PARK & MOZAMBIQUE

The Itinerary

Meals included: Breakfast

Day 17 Arrive in Australia (or New Zealand)

Please note that some customers have a +1 day arrival.



17-DAY TOUR PACKAGE | KRUGER NATIONAL PARK & MOZAMBIQUE

Tour Inclusions

HIGHLIGHTS

Explore the beauty of South Africa, Eswatini and Mozambique

Journey into Eswatini's "Valley of Heaven" and stay in unique beehive-shaped huts

Discover the sights and sounds of the African bush on a guided morning walk

Travel to Hlane Royal National Park to enjoy a thrilling safari game drive in search of the majestic white rhino

Cross into Mozambique and arrive on Xai Xai's golden beaches and vibrant coral reefs

Explore Vilankulos, the gateway to the stunning Bazaruto Archipelago

Cruise to Magaruque Island on a traditional dhow boat

Relax at Barra Beach to unwind on pristine sands and turquoise waters

Enjoy a dining experience at Neptune's beachfront restaurant

Take a day trip to Tofo, a vibrant coastal village

Explore Maputo on a guided city tour and admire its Portuguese colonial architecture

Stay at Nkambeni Safari Camp within Kruger National Park

Search for Big Five wildlife: lions, leopards, elephants, rhinos & more in Kruger National Park

Embark on a full-day guided game drive with experienced safari rangers

Enjoy a full day at leisure in Nkambeni Safari Camp

Start the day with an early morning game drive, searching for more magnificent wildlife

Spend a night at leisure in Johannesburg

FLIGHTS

Return international full-service flights (economy class), surcharges may apply (Excludes Trip Only option)

ACCOMMODATION

15 nights of hotel and safari camp accommodation

DINING

23 meals

ESSENTIALS

English-speaking driver/guide

Airline taxes and surcharges

TRANSPORT

Transportation by air-conditioned private vehicles

4x4 vehicles for the safari game drive on Day 13

TRANSFERS

Complimentary airport shuttle transfers (Excludes Trip Only option)

Important Information

**Please note: All information provided in this brochure is subject to both change and availability. Prior to purchase please check the current deal for up-to-date information. If you have already purchased this deal, the terms and conditions on your Purchase Confirmation apply and take precedence over the information in this brochure.*

Booking Information

After purchase, you will receive a receipt and a Purchase Confirmation, directing you to an online Passenger Information Form. You must complete the Passenger Information Form within 72 hours of purchase.

Any special requests, preferences and optional extras MUST be clearly stated in your Passenger Information Form. Any change requested after submitting your Passenger Information Form cannot be guaranteed, is strictly subject to availability and will incur surcharges as outlined in the Schedule of Fees below.

Please note: All countries and territories have different entry requirements in relation to vaccinations, quarantine/isolation periods and travel restrictions. Due to the evolving nature, we would ask all of our customers to monitor, meet and adhere to the specific requirements of their intended destination(s) in the lead-up to and immediately before travel, as well as any requirements post-travel upon their return.

Our Policies

Cancellation and Refund Policy

By placing a booking with us, you acknowledge the following important information:

- **we act as your booking agent;** TripADeal is a booking services provider, and curates the Travel Offers available on our website. We act as your booking agent, and we receive payment for the Booking Services as part of the booking price, however, we do not provide any of the Travel Services (flights, accommodation, tours or other products or services) included in your booking – the Travel Services are provided by a number of third party Travel Suppliers.

- **each booking is unique;** our Travel Offers are made up of a variety of different components and are, during the booking process, uniquely tailored to suit your requirements, for example, departure dates and ports, flight and room upgrades, tour inclusions, etc.

- **changes/modifications to your booking may not be possible;** once your booking has been made, changes or modifications may not be possible, and where possible, may incur a fee. It is important to ensure that the information you provide during the booking process is accurate and up to date, and that you read the Travel Offer carefully before placing your order.

- **Travel Offers are a package;** our Travel Offers have been curated into package offerings and must be used as a package – individual components cannot be used independently of the full package offering.

- **our Travel Offers are generally non-refundable;** in order to provide great value Travel Offers, we work with a variety of Travel Suppliers to find the best deals – this often means the Travel Suppliers' offerings are non-refundable to ensure the best price. We recommend that you obtain travel insurance as soon as you make a booking with us. If your plans change, you can receive a full refund (excluding credit card fees) if you cancel at least 12 months in advance to your scheduled departure date.

To read more about our [Cancellation and Refund Policy](#), please click here.

General Terms and Conditions

By placing your booking with us, you acknowledge and agree to our [Terms & Conditions](#), [Privacy Policy](#) and [Cancellation Policy](#).

Offer Essentials

This Travel Offer is valid for travel on selected dates until the 21 December 2027.

Minimum group size 10, maximum group size 12 per vehicle.

This Travel Offer is priced per person

based on a twin share.

Departure Dates & Surcharges

See checkout for live dates and availability.

Single Traveller Supplement

For solo travellers, a mandatory single supplement of \$650 applies.

Please note: Accommodation for single customers who are travelling on a tour or cruise package may be in a single room, depending on availability.

Child Policy

- No child discounts are offered. The full price applies to all children travelling with their parents.
- Valid for children 12 years old and over.

Please note: Children must be accompanied by a responsible adult 18 years old and over to travel. No unaccompanied minors are allowed.

Flights

(Flight information for options excluding Trip Only)

Departure Cities

Sydney, Melbourne, *Brisbane, *Adelaide, *Perth or *Auckland

Departure City Surcharges

Brisbane: \$100 per person
Perth: \$150 per person
Adelaide: \$350 per person
Auckland: \$800 per person

International Flight(s)

Full-service airline(s) used

- Cabin Class: Economy Class

Please note: We cannot accommodate one-way flights. Travellers must take all included flights within the package, and any flights intentionally forfeited will result in later flights being subject to cancellation.

Please note:

From Sydney, Melbourne, Brisbane, Adelaide and Perth, the flying journey to your destination may take up to 28 hours, with up to 2 stops. One of those stops may

Important Information

be within Australia. This is provided as a guide only - actual flight duration can vary depending on availability and airline schedules. Your booking's final details will be confirmed to you via email once available.

From Auckland, the flying journey to your destination may take up to 32 hours, with up to 2 stops. One of those stops may be within Australia. This is provided as a guide only - actual flight duration can vary depending on availability and airline schedules. Your booking's final details will be confirmed to you via email once available.

Preferred Airline Surcharge

- Cabin Class: Economy Class
- Singapore Airlines: \$400 per person
- Qantas: \$500 per person

Please note:

- *Preferred airlines are subject to availability. If we are unable to fulfil your request, the above extra cost will be refunded.*
- *On any upgrade purchase, short-haul flights and domestic flight sectors are not guaranteed.*
- *In the event that a purchased stopover package and a purchased preferred airline upgrade are not compatible, you will have the option to receive a refund for the preferred airline upgrade or be offered an alternative stopover city option, e.g if you choose to fly with Singapore Airlines you cannot stopover in Dubai.*
- *Preferred airline refers to the marketing carrier and could include codeshare partners.*

Arrive Early and Stay Behind Options

Fly out and return home up to 60 days pre and post your tour dates.

Arrive Early

Johannesburg, South Africa - From \$300 per person, subject to availability.

Stay Behind

Johannesburg, South Africa - From \$300 per person, subject to availability.

Please note:

This option incurs a fee for adjusting the departure or return dates. This fee does not include extra nights' accommodation, meals and/or airport transfers, which will be at your own cost.

In addition, airport transfers listed as an inclusion on the Travel Offer are considered void in the event that you select an Arrive Early/Stay Behind option. As such, you will need to arrange your own transfers at your cost.

We strongly advise against booking any pre or post-tour travel arrangements/ accommodation until TripADeal confirms your flight details. If you choose to book before confirmation, we recommend opting for refundable reservations or having backup plans in case the tour does not proceed.

Internal Flights:

If you select to Arrive Early or Stay Behind into a city other than the one where the tour begins or concludes (where applicable), the package will include an internal flight to your destination. This offer applies only to the cities listed in our Arrive Early & Stay Behind Options. If you wish to forfeit this flight, please advise our friendly team at the time of purchase. Please note that the package's cost does not change when you choose to forfeit your connecting flight.

Please note: If you request to fly into cities not listed in our "Arrive Early & Stay Behind Options", we may be able to customise your itinerary. If possible, the flight's cost will be charged as an extra.

Cancellations & Changes:

Flight booking changes or cancellations after air tickets have been issued are not guaranteed and may incur additional fees and fare difference, subject to the airline cancellation and change policies. Flight changes are subject to availability at the time of booking.

High-Season:

A high-season Arrive Early or Stay Behind can be purchased for an additional charge, subject to availability. For pricing, please refer to the cart.

+ 60 days:

You can fly out up to 60 days before your package's start date, and/or return home 60 days after your package's end date. Should you wish to fly out or return home for more than 60 days from the tour, please contact us to request availability. Additional costs may apply.

Estimated dates:

Your estimated departure, return, and arrival dates are all subject to availability and may vary. The confirmed schedule for all flights will be provided when you receive your flight tickets.

High season surcharges apply to flights departing between the below date ranges:

- 3rd April 2026 - 20th April 2026
- 26th June 2026 - 17th July 2026
- 18th September 2026 - 9th October 2026
- 12th December 2026 - 26th January 2027
- 19th March 2027 - 28th April 2027
- 19th June 2027 - 18th July 2027
- 11th September 2027 - 10th October 2027
- 10th December 2027 - 31st January 2028
- 1st April 2028 - 30th April 2028
- 1st July 2028 - 23rd July 2028
- 16th September 2028 - 15th October 2028
- 9th December 2028 - 3rd January 2029

Stopover Packages

* Singapore

Includes:

- 2, 3 or 5 nights in 4-star accommodation
- Daily breakfast
- Return airport transfers

For pricing, please refer to the payment cart at checkout.

- When a pre and post-tour stopover is chosen, the same stopover location must be chosen each way, due to the airline used.
- When selecting to Arrive Early for your tour in conjunction with a Stopover Package, your fly out date from home will take place before the stopover.

Important Information

- When selecting to Stay Behind after your tour in conjunction with a Stopover Package, your stopover will take place before your final flight home.
- Stopover packages are subject to availability.
- In the event that a purchased stopover package and a purchased preferred airline upgrade are not compatible, you will have the option to receive a refund for the preferred airline upgrade or be offered an alternative stopover city option, e.g if you choose to fly with Singapore Airlines you cannot stopover in Dubai.
- Blackout dates apply to flights departing between the below date ranges:

2026

Singapore Grand Prix: 01 October - 09 October 2026
Christmas and New Years Eve - 18 December 2026 to 3 January 2027

2027

Singapore Grand Prix: 30 September - 05 October 2027 (dates are still tbc)
Christmas and New Years Eve - 20 December 2027 to 3 January 2028

Flight Class Upgrades

Business or Premium Economy Class: For pricing, please refer to the payment cart at checkout.

Please note:

- *Flight upgrades are subject to availability and pricing changes (if we cannot fulfil your request, the upgrade cost will be refunded).*
- *On any upgrade purchase, short-haul flights and domestic flight sectors are not guaranteed.*

Outbound Flights

Please note: Due to flight scheduling and availability, some departures may occur on Day 0. Affected customers must be available to depart the day before. Flight times will be indicated on your final documents, issued 4-6 weeks before departure.

Missed Flights

If you fail to arrive for your outbound flight, you risk all flight and land arrangements in your destination being automatically cancelled by the airlines and land operator, respectively. Additional fees may apply to reinstate these services. If you miss your flight for whatever reason, please contact us as soon as possible to make arrangements.

Trip Only Option

If you choose to remove international flights from your package, your holiday may be shorter, as travel days for flights are not included in the Trip Only package. You will receive an email confirmation when minimum numbers have been met and the departure is guaranteed. We recommend making further travel arrangements, such as flights, after you have received confirmation of a guaranteed departure. TripADeal assumes no liability for financial losses incurred due to travel arrangements made prior to confirmation of guaranteed departure.

Note: The Trip Only Package does not include return international airfares or airport transfers. At the conclusion of the tour, you will be responsible for booking your own onward travel.

[Click here for full Trip Only terms and conditions](#) (see section 4.1)

Accommodation

Accommodation Used:

3 & 4-Star Properties (Self-Rated)

Johannesburg, South Africa: Garden Court OR Tambo International Airport
Mlilwane Game Sanctuary, Eswatini: Mlilwane Game Sanctuary Rest Camp
Hlane Royal National Park, Eswatini: Ndlovu Camp
Xai Xai, Mozambique: Go Wild Resort
Vilankulos, Mozambique: Sailaway Camp
Barra Beach, Mozambique: Bay View Lodge
Maputo, Mozambique: Southern Sun
Kruger National Park, South Africa: Nkambeni Safari Camp

Please note: Accommodation/rooms offered are based on a lead-in room type and are subject to availability based on seasonality. In the instance a property is not available, a similar standard of accommodation will be provided. Properties will be confirmed and included in your travel pack, which you will receive 4-6 weeks before travel.

Extra Nights

Not available.

Please note: If you are interested in booking additional nights of accommodation pre or post-tour, please wait until you receive your travel documentation approximately 4-6 weeks before departure for the confirmed list of hotels. If booking your own additional accommodation directly with the hotel, please be aware that you may be required to change rooms at the start/end of your tour.

Maximum Room Capacity

2 people.

Triple Share

Not available.

Bedding Configuration

Twin or double (subject to availability).

Optional Tours/activities

Day 14: Full-Day Panorama Tour at \$320 per person
Day 14: Afternoon Safari Game Drive at \$265 per person

Please note:

- *Prices are based per person, are subject to availability, time permitting and weather conditions*
- *The optional tours listed above must be purchased on checkout or over the phone before submitting your passenger information form (subject to availability).*
- *Some tours or shore excursions require minimum numbers to operate*

Exclusions

- Visa fees and requirements
- Domestic transfers and flights not stated in the deal offer

Important Information

- Meals/beverages not stated in the deal offer
- Optional gratuities/tipping
- Optional activities/tours
- Personal expenses
- Travel insurance
- Any costs associated with an interruption to your tour as a result of an airline schedule change or cancellation
- Mandatory city tax
- Porterage

Please note: Return international flights and transfers to and from the tour are not included in the Trip Only option.

Gratuities / Tipping

Land

Gratuities (tips) are not included for the services of the tour leader (when available) and driver throughout the tour. The recommended tip is 5 AUD (60 ZAR) per person per day. This covers the guide/leader and the driver and will be collected on tour.

Please note: Tipping for services provided is always a matter of personal discretion; however, please be aware that many locals consider tipping part of their normal remuneration, and they may approach you for payment; there's no need to be intimidated by the request.

Other Important Information

BAGGAGE:

Luggage will be restricted to a maximum of 20kg per person. Excess luggage will not be loaded into the vehicle.

TOUR GUIDE VS. TOUR LEADER

Tour Guide:

Often locals with intimate knowledge of an area, its culture, and history. Their role entails providing commentary, routing the tour, and seeing that people have a good time. They are a licensed, qualified expert who supplies specific information on the history, art, architecture and culture of the city/village/attraction where they are guiding the tour. The guide meets the group at the required place and leaves it at

the end of the tour; they do not travel with the group.

Tour Leader:

An experienced person tasked with ensuring the smooth operation of tours, as well as providing practical support to passengers throughout the whole trip. Their role primarily includes assisting with accommodation, transportation between locations, and communication with tour guides at each stop. A tour leader may provide general guidance around a city or village and offer information on the place visited on the bus. However, they are not required to have specific art, architecture, or historical knowledge. They are not allowed to provide a guided tour or commentary of a city/village/attraction once there and, if caught doing so, can be fined.

Please note: Tour leaders/guides are not a standard inclusion in all travel offers. Tour leaders/guides will only be made available when required to enhance the experience of the destination featured.

CLIMATE & AVERAGE TEMPERATURES

South Africa

South Africa enjoys a generally mild and sunny climate year-round, with seasons opposite to the Northern Hemisphere. Summers (December–February) are warm to hot with occasional rainfall, particularly in inland regions and safari areas such as Kruger National Park. Autumn (March–May) brings pleasant temperatures and drier conditions, while winters (June–August) are typically mild and dry across most of the country, though the Western Cape—including Cape Town—experiences its rainy season during this time. Spring (September–November) sees temperatures rise again with blooming landscapes and the return of rainfall to the interior. Overall, South Africa enjoys abundant sunshine and comfortable temperatures, making it a great destination to visit throughout the year.

Eswatini

Eswatini enjoys a generally pleasant

subtropical climate, with warm temperatures and distinct wet and dry seasons. Summer (November–March) is warm to hot with most of the year's rainfall, often in short afternoon thunderstorms that keep the landscapes lush and green. Autumn (April–May) brings milder temperatures and drier conditions, while winter (June–August) is typically dry, sunny, and cooler, especially in the mornings and evenings. Spring (September–October) sees temperatures rise again before the summer rains return. Overall, Eswatini experiences plenty of sunshine and comfortable temperatures, making it an enjoyable destination year-round.

Mozambique

Mozambique has a warm tropical climate, with a hot, humid summer (November–March) that brings most of the country's rainfall in short tropical showers. Autumn (April–May) sees temperatures ease and rainfall decrease, creating warm and pleasant conditions. Winter (June–August) is typically dry, sunny, and slightly cooler, making it one of the most comfortable times to visit coastal areas such as Vilankulo. Spring (September–October) becomes warmer again before the summer rains return. Overall, Mozambique enjoys plenty of sunshine and warm temperatures throughout the year, particularly along its beautiful Indian Ocean coastline.

Weather

We always suggest referring to an online source for the most up-to-date weather information for your destination/s.

FLIGHTS

Seat Selection & Frequent Flyer Points:

We do not arrange seat selection. It is essential to highlight that some airlines do not allow pre-selected seats. We strongly suggest you contact the airline directly with seating allocation requirements and/or arrive at the airport earlier to arrange your seating. While we do not add frequent flyer member details to bookings,

Important Information

you can do this directly with the airline once you have your flight information.

Dietary Requests:

Meal options and availability differ between airlines and routes therefore not all dietary requests can be accommodated. If your flight includes meals we will select the most suitable option available based on the dietary requirements you have specified. All meal requests are subject to airline approval and are not guaranteed, therefore we recommend preparing for your flight by bringing appropriate food for yourself, as required.

Passport Validity:

Customers must provide valid passport details either at the time of purchase or no later than 90 days before the departure date. Failure to do so may result in the cancellation of the booking. Customers will be responsible for any costs and fees incurred in this instance.

COACH TOUR

Meals:

For meals not included, the tour leader (when available) will offer assistance with reservations, suggestions and directions to local restaurants. It is your responsibility to notify us of any dietary requests/requirements.

Please note: We will do our best to meet your requests/requirements; however, we cannot guarantee that we will always be able to.

Luggage:

You will be responsible for all your personal belongings whilst on tour. You must carry your own luggage from the vehicle to the hotel room and back to the vehicle. The driver will assist with the uploading and unloading of bags from the vehicle.

OTHER

Mobility:

If you require wheelchair access please contact our friendly sales and service team to inquire on your behalf.

Fitness Level Required:

Adventure (and spontaneity) create some of the best travel memories. Bear in mind, your home schedules and timings might not be adhered to on tour - it's all part of the fun!

A moderate level of fitness will be required.

Expect a moderate pace of touring with a focus on guided tours that may include full days with extended activity, guided city tours or nature walks. You will require a general level of fitness for unassisted navigation of stairs and inclines, longer distances with possible periods of standing when visiting sites, walking on sloping, uneven ground or elevations. You will be responsible for your own luggage and have the ability to board all modes of transport without assistance. Please note: Many areas may be inaccessible to wheelchairs or mobility scooters, where the unassisted use of personal walking sticks and other aids may be required. Although some assistance may be available, every traveller should be self-reliant during all aspects of their travel.

Please note: It is expected that every traveller must be self-reliant and able to undertake all aspects of their own travel. Please speak to your booking agent about your personal circumstances and any assistance requirements to ensure this tour is right for you.

Please note: If you have any concerns, please consult your healthcare provider prior to purchase/travel.

Yellow Fever:

A valid international certificate of vaccination against Yellow Fever is required in many countries. You may need to present this on arrival at the airport or border crossing. Some countries will refuse entry if you are unable to present your certificate. It's also common for your home country to request a Yellow Fever certificate upon arrival.

You must check with your doctor well before leaving home about the Yellow Fever requirements for the countries you'll be visiting.

Sightseeing:

Please note: If entry to a site is affected by changes in operating hours or public holiday closures, your itinerary, where possible, may be adjusted, or a similar activity will be offered in its place (subject to availability).

Wildlife sighting:

TripADeal cannot guarantee animal sightings on tour. Wildlife are unpredictable and factors such as weather conditions, predatory fear and animal movements can impact sightings.

Shopping:

Shopping overseas can be a daunting and confusing experience, especially when there is a language barrier. Please be very cautious when foreign currencies and prices are involved. If paying by credit card, please pay close attention to the amount you are being charged and keep all your receipts.

Do not make any purchases you are not comfortable with or feel pressured into. If you are uncertain or need assistance with the language barrier, please seek assistance from your Tour Guide/Leader. Please refer to our [Terms and Conditions](#) regarding shopping for further information.

Visas

South Africa

A tourist visa for South Africa is not required for stays up to 90 days if travelling on an Australian or New Zealand Passport. Travellers must ensure their passport is machine-readable and contains at least two blank pages.

Eswatini

Tourists can enter Eswatini for up to 30 days without a visa. Your passport must be valid for six months after departure and have two blank pages.

Mozambique

You'll need a visa to enter Mozambique. Please see the [Embassy of the Republic of Mozambique](#) for more information on visa types and document requirements.

Important Information

Important:

- *Please start arranging your visa three weeks before departure to account for any delays due to consulate operating hours.*
- *Visa rules are subject to change. Please check with the nearest embassy, consulate or immigration department of the destination/s you are visiting once you receive your travel documentation to ensure you have the most up to date information.*
- *It is your responsibility to be travel-ready and ensure that you are aware and comply with any destination or travel requirements, including the validity of all required travel documents.*
- *Passengers who are not Australian citizens must also check with the respective consulate or visa agency to determine what their visa requirements are and what personal identification is required.*
- *It is also important to note that some areas of employment, such as journalism, government authorities and charity organisations, may have additional restrictions in applying for visas. This may, in turn, affect the type of application required.*

Travel Insurance

Embarking on your next trip is exciting, and while you hope the unexpected does not happen, it is best to be prepared. We strongly recommend you take out travel insurance when making your booking. Whether it's a potential medical emergency, a flight cancellation, a delayed suitcase, or an unforeseen event, it's important to ensure you're adequately protected. For more information or advice visit <https://www.tripadeal.com.au/travel-insurance>

Schedule Of Fees

Voluntary Changes

This includes booking changes requested by you, including but not limited to those changes requiring an airline ticket or a Purchase Confirmation reissue.

- Changes - \$100 per booking and any additional charges applied by the airline/ cruise company/accommodation/other travel providers.

Name Changes Due To Passenger Error

- If the incorrect name has been provided, charges of \$100 per booking and any additional charges applied by the airline/ cruise company/accommodation/other travel providers.

Supplier Fees

In the event the tour package you have purchased is unable to proceed, and/or a Travel Supplier is unable to fulfil the tour due to external circumstances (Limitation of Liability e.g. a Force Majeure event), there may be a fee or amount of money that is withheld by our Suppliers and is unrecoverable. This may be due to non-refundable airline tickets, cancellation penalties with cruise cabins or unrecoverable payments with our land/accommodation partners. If refunds are not available from Suppliers, we will endeavour to obtain a travel credit on the best terms available and communicate these outcomes to you. In the event we are unable to obtain a refund or travel service credit, or part thereof, this cost is passed on to the customer as a Supplier Fee.