



# Kimberley Wonders Expedition Cruise

AUSTRALIA

## The Offer

Experience some of Australia's most dramatic landscapes and natural wonders, cruising through Western Australia's rugged Kimberley region. Known for its dramatic gorges, red sandstone escarpments and cascading waterfalls, you'll get up close and personal with incredible wildlife, ancient rock art, and a coastline of unmatched beauty.

Your adventure begins in tropical Darwin where you'll enjoy a night at leisure before joining your Coral Expeditions purpose-built ship. Once settled in your stateroom, you'll be treated to chef-prepared meals with select beverages, complementary Wi-Fi access and daily briefings with guest lecturers. Along the way, you'll board Xplorer and Zodiac tenders to explore remote rivers, reefs and isolated beaches on the included shore excursions.

Each day is filled with highlights, from cruising to the base of the 80-metre-tall King George Falls to the natural beauty of Prince Frederick Harbour, where white-bellied sea eagles and mangrove crabs are found. Have your camera ready at the 50-metre-high terraced King Cascade waterfall and observe the power of the ocean as mammoth 11-metre tides recede at Montgomery Reef. From the Indigenous rock

art galleries of Swift Bay to a heart-pumping ride through the rapids of Horizontal Falls, this is a holiday you won't forget.

Choose from two itineraries (one starting in Darwin, the other starting in Broome) with return domestic flights, 2 nights of 4-star hotel accommodation, a 10-night expedition cruise, all meals while cruising and more.

**Want more? Explore more with Arrive Early and Stay Behind options in Darwin and Broome.**

Offer available for a limited time or until sold out. TRIP A DEAL PTY LTD: 50149240433

Updated: 21 May 2026 06:13:48

Have a question about this deal? We're here to help.  
Call our friendly team on 1300 158 912

1

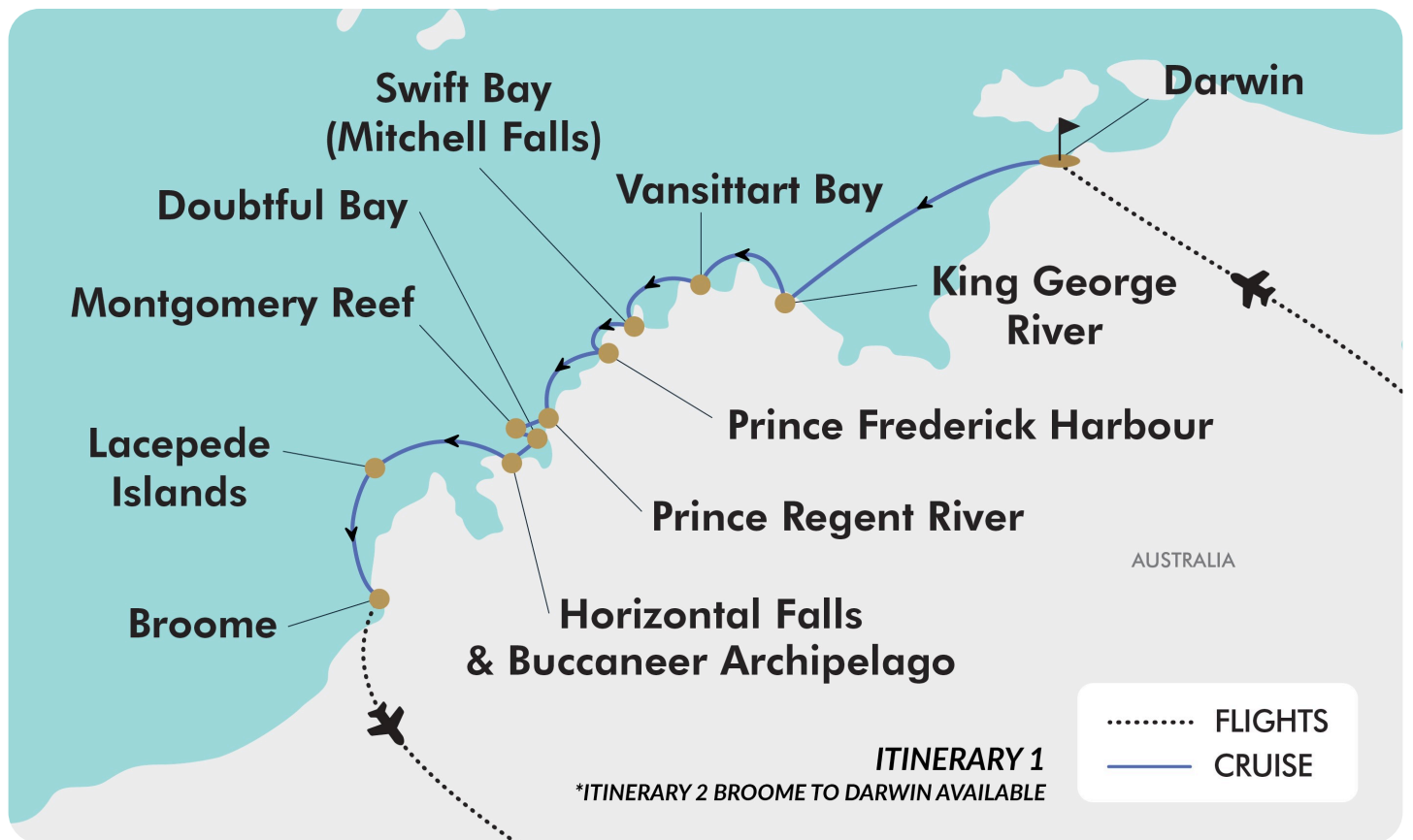
FREQUENT  
FLYER 

 Trip  
aDeal



**13-DAY CRUISE PACKAGE | KIMBERLEY WONDERS EXPEDITION CRUISE**

**The Map**





## 13-DAY CRUISE PACKAGE | KIMBERLEY WONDERS EXPEDITION CRUISE

# The Itinerary

## Itinerary 1

### Day 1 Fly to Darwin, Australia

Today, fly to Darwin, the gateway to Australia's untamed top end.

Upon arrival, make your own way to your centrally located hotel and enjoy the rest of your day at leisure.

Optional Upgrade: Private Transfer: Darwin Airport to Hotel

Add a private vehicle transfer from the airport to your hotel. After collecting your luggage, meet your driver in the arrivals terminal and transfer to your hotel. See pricing in important information.

*Please note: This transfer cannot be booked when an Arrive Early is arranged.*

**Overnight: Rydges Darwin Central or similar, Darwin, Northern Territory**

**Meals included: In-Flight**

### Day 2 Darwin - Begin 10-Night Kimberley Cruise

**Embark: 08:00 am**

This morning, make your own way to Darwin Fort Hill Wharf for boarding at 08:00. Once onboard, enjoy time to settle into your stateroom before a 09:00 departure. There will also be a light breakfast available upon boarding before you cruise across Joseph Bonaparte Gulf and sail into Western Australian waters.

*Please note: This Kimberley Expedition itinerary is flexible to take advantage of changing weather and tidal conditions. This itinerary showcases a selection of the key destinations you may visit.*

**Overnight: Coral Expeditions' Coral Adventurer or Coral Geographer**

**Meals included: Breakfast; Lunch; Dinner**

### Day 3 King George River & Falls (Oomari Falls)

Fed by the King George River draining across the Gardner Plateau, the 80-metre-tall King George Falls is the most impressive Kimberley waterfall and the highest twin falls in Western Australia. Before reaching the mist-like spray rising from the base of King George Falls, you'll cruise through steep-sided gorges carved by a flooded river system that cut through the Kimberley landscape 400 million years ago.

Early in the waterfall season, you may cruise around the base of impressive King George Falls, while in later months, view the sandstone cliffs' honeycomb erosion patterns up close.

**Overnight: Coral Expeditions' Coral Adventurer or Coral Geographer**

**Meals included: Breakfast; Lunch; Dinner**

### Day 4 Vansittart Bay (Banjal)

Vansittart Bay is home to many cultural and historically significant sites, like the remarkable Gwion Gwion (Bradshaw) Aboriginal rock art galleries, estimated to be up to 20,000 years old. Jar Island is named after the pot shards found here, brought to the island by Makassar fishermen harvesting sea cucumbers (also known as trepang).





## 13-DAY CRUISE PACKAGE | KIMBERLEY WONDERS EXPEDITION CRUISE

# The Itinerary

## Itinerary 1

Nearby, on the Anjo Peninsula, lays the well-preserved wreckage of a US Air Force C-53 Skytrooper aircraft. The plane, flying from Perth to Broom back in 1942, crashed after the pilot lost his bearings and put it down on a salt pan near present-day Truscott Airbase.

**Overnight:** Coral Expeditions' Coral Adventurer or Coral Geographer

**Meals included:** Breakfast; Lunch; Dinner

### Day 5 Mitchell Falls, Winyalkan & Swift Bay

Tumbling down the Mitchell Plateau in a series of tiered waterfalls and emerald green rock pools, the Mitchell Falls are the photogenic poster child for the Mitchell River National Park. This is your chance to take a scenic helicopter flight to multi-tiered Mitchell Falls where emerald-hued rock pools cascade down the escarpment and ancient rock art galleries are concealed in caves behind curtains of water.

Mitchell River National Park is inhabited by many mammals, amphibians, reptiles and bird species that are lured here by a year-round water source. Sandstone terraces beside tiered rock pools make a terrific viewing platform from which to savour the serenity of this ancient landscape. (additional fees apply, booked during the cruise)

An alternative option to Mitchell Falls is to explore the sandstone caves of Wollaston Bay or Wollaston Creek. This mass of weathered tunnels, arches and columns form a labyrinth-like

maze and was once an Aboriginal midden. Another option while anchored at Winyalkan Bay is a visit to a series of Wandjina and Gwion Gwion rock art galleries at Swift Bay.

In the evening, watch the sunset over the Indian Ocean while indulging in a gourmet BBQ.

**Overnight:** Coral Expeditions' Coral Adventurer or Coral Geographer

**Meals included:** Breakfast; Lunch; Dinner

### Day 6 Prince Frederick Harbour & Bigge Island (Wuuyuru)

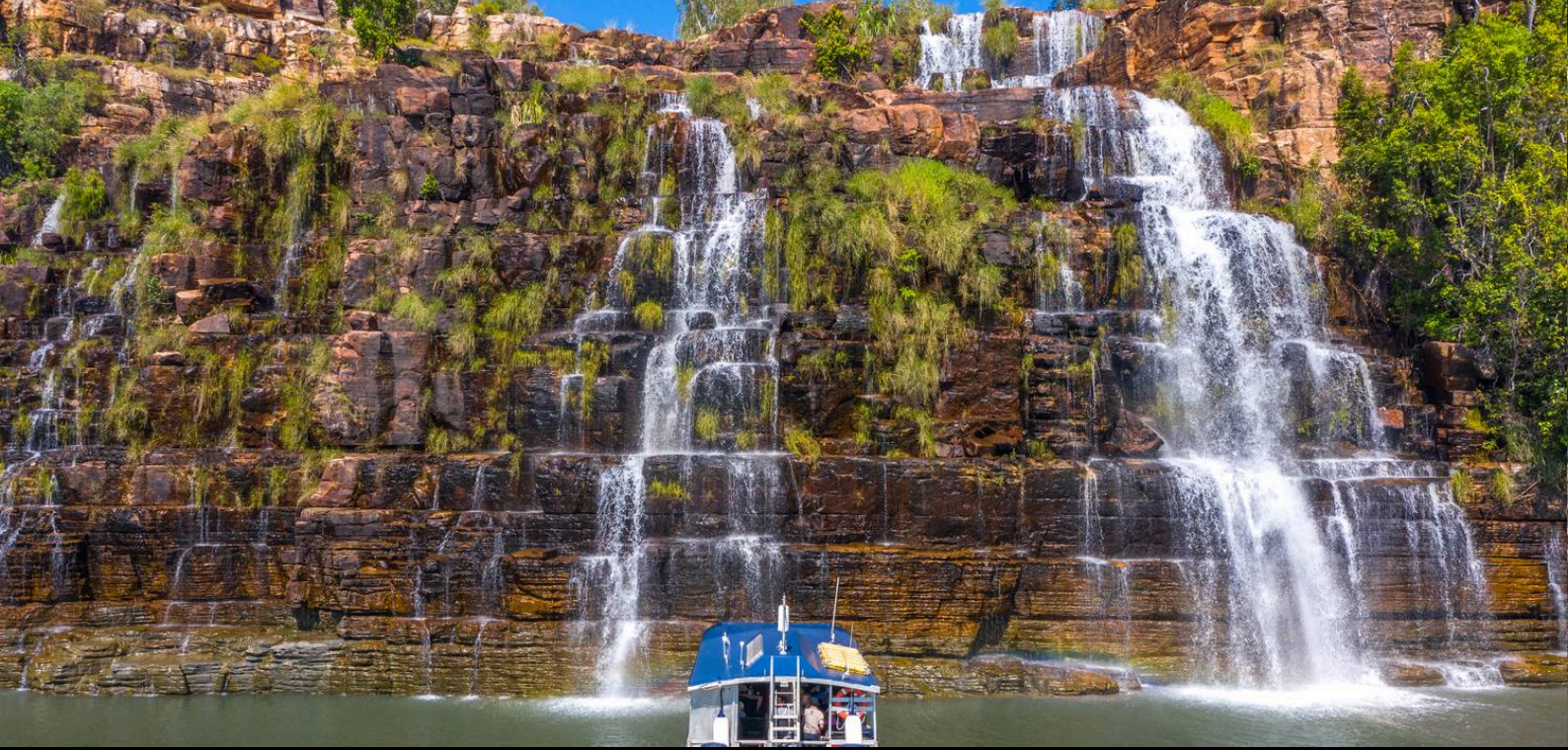
Prince Frederick Harbour is one of the Kimberley's most spectacular locations at the southern end of York Sound. The harbour is dotted with islands lined with mangroves and monsoon rainforests, set against a backdrop of an ochre-hued escarpment.

White-bellied sea eagles and other birds of prey are often seen here, while expansive mudflats reveal large populations of mudskippers and mangrove crabs at low tide. Take the Xplorer tender vessels on a cruise up Porosus Creek to view some striking rock formations.

Bigge Island's Indigenous name is Wuuyuru, and the Indigenous Group of the area is the Wunambal people.

**Overnight:** Coral Expeditions' Coral Adventurer or Coral Geographer

**Meals included:** Breakfast; Lunch; Dinner



## 13-DAY CRUISE PACKAGE | KIMBERLEY WONDERS EXPEDITION CRUISE

# The Itinerary

## Itinerary 1

### Day 7 Prince Regent River & Careening Bay (Wunbung-Gu)

King Cascade is a classically-beautiful terraced waterfall and one of the most photographed waterfalls in the Kimberley. Falling from a considerable height and around 50 metres across, water tumbles down a staggered terrace of Kimberley sandstone. Layer upon layer of ochre-hued and blackened rock sprouts grasses, mosses and ferns in a sort of lushly vegetated hanging garden.

Reach King Cascade after cruising in the Xplorer tender vessels down the steep-sided Prince Regent River, which is a remarkable anomaly as the river runs dead straight along a fault line.

Lt Phillip Parker King named nearby Careening Bay after he grounded his leaking vessel HMC Mermaid to effect repairs. While stranded on this remote coastline for 17 days, the ship's carpenter carved HMC Mermaid 1820 into the bottle-shaped trunk of a boab tree near the beach. Almost 200 years later, the Mermaid Boab Tree has since split into two trunks and sports a mammoth girth of 12 metres. Significantly, the tree is listed on the National Register of Big Trees and the carpenter's careful inscription now stands almost as tall as a person.

**Overnight:** Coral Expeditions' Coral Adventurer or Coral Geographer

**Meals included:** Breakfast; Lunch; Dinner

### Day 8 Montgomery Reef (Yowjab)

Montgomery Reef is a biologically-diverse area covering over 300 square kilometres and was named by Phillip Parker King. Twice daily, as the sea recedes in mammoth 11-metre tides, Montgomery Reef rises from the Indian Ocean in a cascade of rushing water, revealing a flat-topped reef pockmarked with rock pools and rivulets.

As the reef emerges, the ocean becomes awash in a swirl of eddies and whirlpools as the moon's gravitational force takes hold. Get up close in the Xplorer and Zodiac inflatable tenders to witness the spectacle as the Expedition Team share their knowledge on the formation of the reef and the myriad wildlife. Opportunistic birds take advantage of the emerging reef, feeding on marine life left exposed in rock pools. Turtles, dolphins, dugongs and sawfish are also attracted to feeding opportunities as the ocean recedes. A few hours later, the entire water-borne drama is reversed as the tide comes in and Montgomery Reef disappears below sea level.

**Overnight:** Coral Expeditions' Coral Adventurer or Coral Geographer

**Meals included:** Breakfast; Lunch; Dinner



## 13-DAY CRUISE PACKAGE | KIMBERLEY WONDERS EXPEDITION CRUISE

# The Itinerary

### Itinerary 1

#### Day 9 Doubtful Bay

Doubtful Bay is the traditional country of the Worrora people who follow the Wandjina, their god, law-maker and creator. Images of Wandjina are found throughout the Kimberley, recording their stories, knowledge and culture in stone. See Red Cone Creek which flows gently downstream until it meets the small but impressive Ruby Falls. Named by local mariner Captain Chris Trucker after his daughter, Red Cone Creek is carved through rock formations stacked atop each other like building blocks. These rock walls are great for climbing and clambering over before reaching a series of freshwater swimming holes and waterfalls. The falls may be a gurgling torrent or a gentle trickle, depending on the time of the year.

Other sites you may visit in Doubtful Bay include the mighty Steep Island and Ruby Falls at Red Cone Creek.

**Overnight:** Coral Expeditions' Coral Adventurer or Coral Geographer

**Meals included:** Breakfast; Lunch; Dinner

#### Day 10 Horizontal Falls (Garaangaddim) & Buccaneer Archipelago

Horizontal Falls is one of the Kimberley's biggest attractions and are a result of the mammoth 11-metre tides that the Kimberley is renowned for. Naturalist David Attenborough described Horizontal Falls as 'one of the greatest natural wonders of the world.' This natural phenomenon was created as the ocean thundered through a narrow gorge in the McLarty Ranges. Water built up on one side and was forcibly pushed through the bottleneck, creating a rushing horizontal waterfall of swiftly flowing seawater. Riding the rapids on the Zodiac inflatable tenders will be one of the highlights of the Kimberley expedition cruises.

Talbot Bay is at the heart of the Buccaneer Archipelago where rocks on the 800 or so islands are estimated to be over 2 billion years old. At Cyclone Creek, you'll see evidence of massive geological forces in the impressive rock formations and cruise through the Iron Islands, past Koolan Island, before enjoying sunset drinks at Nares Point.

**Overnight:** Coral Expeditions' Coral Adventurer or Coral Geographer

**Meals included:** Breakfast; Lunch; Dinner



## 13-DAY CRUISE PACKAGE | KIMBERLEY WONDERS EXPEDITION CRUISE

# The Itinerary

### Itinerary 1

#### Day 11 The Lacepede Islands

The Lacepede Islands are a protected class-A nature reserve and are significant as a seabird nesting rookery for brown Boobies and Roseate Terns. Other species often sighted at the Lacepedes include Australian pelicans, frigate birds, egrets and gulls. The four low-lying islands are also an important breeding and nesting habitat for green turtles. If weather and tide conditions are suitable, you will explore the lagoons by Xplorer and Zodiac tender vessels.

As your incredible Kimberley adventures draw to a close, enjoy the Captain's farewell drinks amongst new-found friends.

**Overnight:** Coral Expeditions' Coral Adventurer or Coral Geographer

**Meals included:** Breakfast; Lunch; Dinner

#### Day 12 Broome - Disembark Cruise

**Disembark:** 08:00

Your incredible adventure along the Kimberley Coast concludes in Broome this morning at 08:00. Bid farewell to newfound friends, the Captain and crew.

After disembarkation, meet your transfer driver and head to your hotel, then enjoy the rest of your day at leisure

**Overnight:** Seashells Broome or similar, Broome, Western Australia

**Meals included:** Breakfast

#### Day 13 Fly Home from Broome

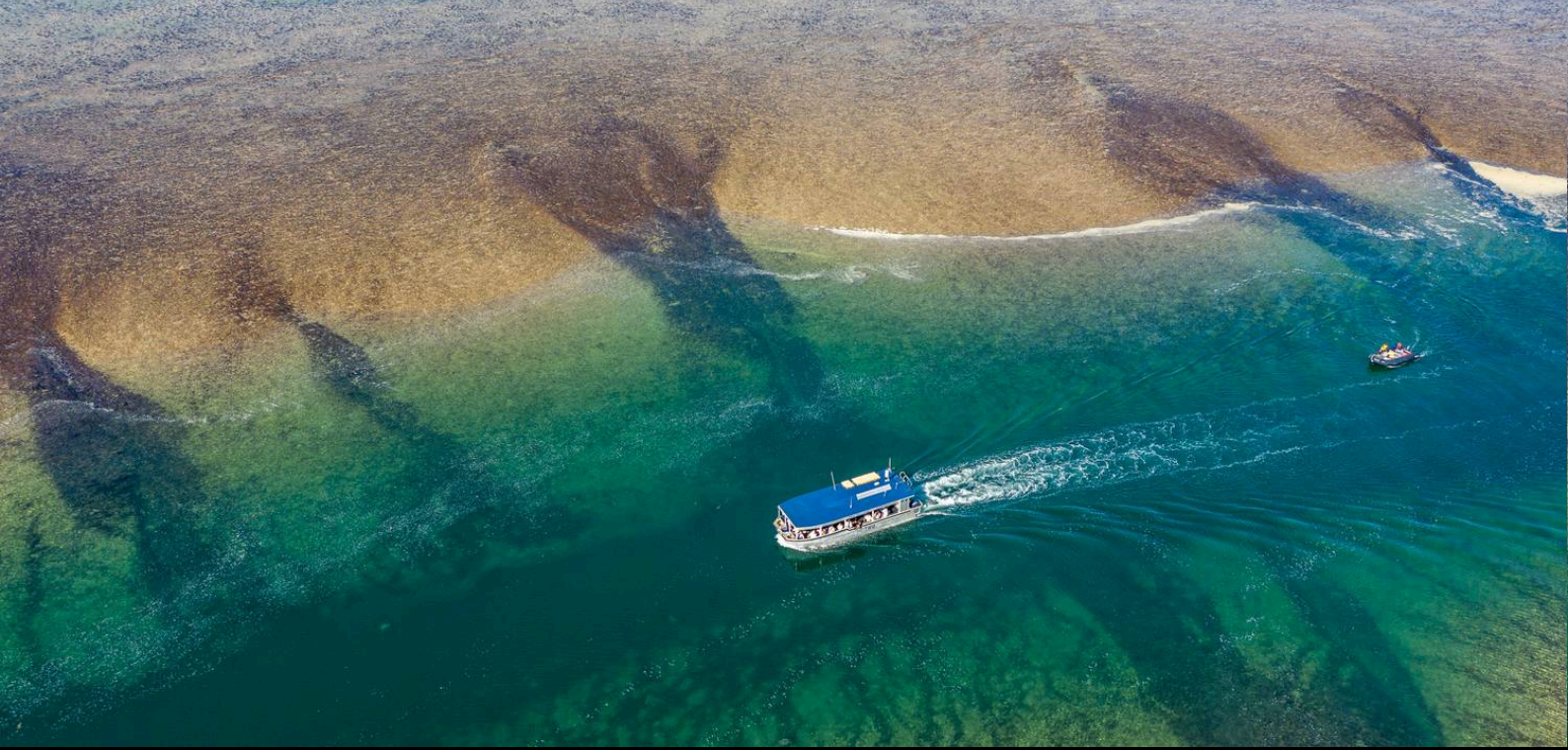
At the appropriate time, make your own way to the airport for your flight home.

#### Optional Upgrade: Private Transfer: Broome Hotel to Airport

Add a private vehicle transfer from your hotel to the airport. Meet your driver at your hotel, and be transferred to the airport - ready to check in for your flight. See current pricing in the important information.

*Please note: This transfer cannot be booked when a Stay Behind is arranged. Due to flight scheduling and availability, some customers may be required to arrive at the airport on Day 13 for a flight scheduled to depart in the early hours of Day 14. Flight times will be indicated on your final documentation, which you will receive 4-6 weeks prior to departure.*

**Meals included:** None



## 13-DAY CRUISE PACKAGE | KIMBERLEY WONDERS EXPEDITION CRUISE

# The Itinerary

## Itinerary 2

### Day 1 Fly to Broome, Australia

Today you'll fly to Broome, the gateway to Australia's untamed Kimberley Coast and the starting point for your expedition cruise. Upon arrival, make your own way to your centrally-located hotel and enjoy the rest of your day at leisure.

Optional Upgrade: Private Transfer: Broome Airport to Hotel

Add a private vehicle transfer from the airport to your hotel. After collecting your luggage, meet your driver in the arrivals terminal and transfer to your hotel. See pricing in important information.

*Please note: This transfer cannot be booked when an Arrive Early is arranged.*

**Overnight: Seashells Broome or similar, Broome, Western Australia**

**Meals included: None**

### Day 2 Broome - Begin 10-Night Kimberley Cruise

**Embark: 15:30**

Make your own way to the Mangrove Hotel at 15:30, where you'll then transfer to Broome Deep Water Port for boarding at 16:00. Enjoy time to settle into your stateroom before a 17:00 departure.

Take the time to become acquainted with the facilities onboard before joining the expedition team in the Bridge Deck Lounge for an introduction to the Kimberley. As dusk falls, you can mingle with fellow travellers, the Captain and crew at Captain's Welcome Drinks.

*Please note: This Kimberley Expedition itinerary is flexible to take advantage of changing weather and tidal conditions. This itinerary showcases a selection of the key destinations you may visit.*

**Overnight: Coral Expeditions' Coral Adventurer or Coral Geographer**

**Meals included: Dinner**

### Day 3 The Lacepede Islands

The Lacepede Islands are a protected class-A nature reserve and are significant as a seabird nesting rookery for Brown Boobies and Roseate Terns. Other species often sighted at the Lacepedes include Australian pelicans, frigate birds, egrets and gulls. The four low-lying islands are also an important breeding and nesting habitat for green turtles. If weather and tide conditions are suitable, you will explore the lagoons by Xplorer and Zodiac tender vessels.

**Overnight: Coral Expeditions' Coral Adventurer or Coral Geographer**

**Meals included: Breakfast; Lunch; Dinner**

### Day 4 Horizontal Falls (Garaangaddim) & Buccaneer Archipelago

Horizontal Falls is one of the Kimberley's biggest attractions and are a result of the mammoth 11-metre tides the Kimberley is renowned for. Naturalist David Attenborough described Horizontal Falls as 'one of the greatest natural wonders of the world.'



## 13-DAY CRUISE PACKAGE | KIMBERLEY WONDERS EXPEDITION CRUISE

# The Itinerary

### Itinerary 2

This natural phenomenon was created as the ocean thundered through a narrow gorge in the McLarty Ranges. Water built up on one side and was forcibly pushed through the bottleneck, creating a rushing horizontal waterfall of swiftly flowing seawater. Riding the rapids on the Zodiac inflatable tenders will be one of the highlights of the Kimberley expedition cruises.

Talbot Bay is at the heart of the Buccaneer Archipelago where rocks on the 800 or so islands are estimated to be over 2 billion years old. At Cyclone Creek, you'll see evidence of massive geological forces in the impressive rock formations and cruise through the Iron Islands, past Koolan Island, before enjoying sunset drinks at Nares Point.

**Overnight: Coral Expeditions' Coral Adventurer or Coral Geographer**

**Meals included: Breakfast; Lunch; Dinner**

#### Day 5 Doubtful Bay

Doubtful Bay is the traditional country of the Worrora people who follow the Wandjina, their god, law-maker and creator. Images of Wandjina are found throughout the Kimberley, recording their stories, knowledge and culture in stone. See Red Cone Creek which flows gently downstream until it meets the small but impressive Ruby Falls. Named by local mariner Captain Chris Trucker after his daughter, Red Cone Creek is carved through rock formations stacked atop each other like building blocks. These rock walls are great for climbing and clambering over before reaching a series of freshwater swimming holes and waterfalls. The falls may be a gurgling torrent or a gentle trickle, depending on the time of the year.

Other sites you may visit in Doubtful Bay include the mighty Steep Island and Ruby Falls at Red Cone Creek.

**Overnight: Coral Expeditions' Coral Adventurer or Coral Geographer**

**Meals included: Breakfast; Lunch; Dinner**

#### Day 6 Montgomery Reef (Yowjab)

Montgomery Reef is a biologically-diverse area covering over 300 square kilometres and was named by Phillip Parker King. Twice daily, as the sea recedes in mammoth 11-metre tides, Montgomery Reef rises from the Indian Ocean in a cascade of rushing water, revealing a flat-topped reef pockmarked with rock pools and rivulets.

As the reef emerges, the ocean becomes awash in a swirl of eddies and whirlpools as the moon's gravitational force takes hold. Get up close in the Xplorer and Zodiac inflatable tenders to witness the spectacle as the Expedition Team share their knowledge on the formation of the reef and the myriad wildlife. Opportunistic birds take advantage of the emerging reef, feeding on marine life left exposed in rock pools. Turtles, dolphins, dugongs and sawfish are also attracted to feeding opportunities as the ocean recedes. A few hours later, the entire water-borne drama is reversed as the tide comes in and Montgomery Reef disappears below sea level.

**Overnight: Coral Expeditions' Coral Adventurer or Coral Geographer**

**Meals included: Breakfast; Lunch; Dinner**



## 13-DAY CRUISE PACKAGE | KIMBERLEY WONDERS EXPEDITION CRUISE

# The Itinerary

## Itinerary 2

### Day 7 Prince Regent River & Careening Bay (Wunbung-Gu)

King Cascade is a classically-beautiful terraced waterfall and one of the most photographed waterfalls in the Kimberley. Falling from a considerable height and around 50 metres across, water tumbles down a staggered terrace of Kimberley sandstone. Layer upon layer of ochre-hued and blackened rock sprouts grasses, mosses and ferns in a sort of lushly vegetated hanging garden.

Reach King Cascade after cruising in the Xplorer tender vessels down the steep-sided Prince Regent River, which is a remarkable anomaly as the river runs dead straight along a fault line.

Lt Phillip Parker King named nearby Careening Bay after he grounded his leaking vessel HMC Mermaid to effect repairs. While stranded on this remote coastline for 17 days, the ship's carpenter carved HMC Mermaid 1820 into the bottle-shaped trunk of a boab tree near the beach. Almost 200 years later, the Mermaid Boab Tree has since split into two trunks and sports a mammoth girth of 12 metres. Significantly, the tree is listed on the National Register of Big Trees and the carpenter's careful inscription now stands almost as tall as a person.

**Overnight: Coral Expeditions' Coral Adventurer or Coral Geographer**

**Meals included: Breakfast; Lunch; Dinner**

### Day 8 Prince Frederick Harbour & Bigge Island (Wuuyuru)

Prince Frederick Harbour is one of the Kimberley's most spectacular locations at the southern end of York Sound. The harbour is dotted with islands lined with mangroves and monsoon rainforests, set against a backdrop of ochre-hued escarpment.

White-bellied Sea Eagles and other birds of prey are often seen here while expansive mudflats reveal large populations of mudskippers and mangrove crabs at low tide. Take the Xplorer tender vessels on a cruise up Porosus Creek to view some striking rock formations.

Bigge Island's Indigenous name is Wuuyuru, and the Indigenous Group of the area is the Wunambal people.

**Overnight: Coral Expeditions' Coral Adventurer or Coral Geographer**

**Meals included: Breakfast; Lunch; Dinner**

### Day 9 Mitchell Falls, Winyalkan & Swift Bay

Tumbling down the Mitchell Plateau in a series of tiered waterfalls and emerald green rock pools, the Mitchell Falls are the photogenic poster child for the Mitchell River National Park. This is your chance to take a scenic helicopter flight to multi-tiered Mitchell Falls where emerald-hued rock pools cascade down the escarpment and ancient rock art galleries are concealed in caves behind curtains of water.

Mitchell River National Park is inhabited by many mammals, amphibians, reptiles and bird species that are lured here by a year-round water source. Sandstone terraces beside tiered rock



## 13-DAY CRUISE PACKAGE | KIMBERLEY WONDERS EXPEDITION CRUISE

# The Itinerary

### Itinerary 2

pools make a terrific viewing platform from which to savour the serenity of this ancient landscape. (additional fees apply, booked during the cruise)

An alternative option to Mitchell Falls is to explore the sandstone caves of Wollaston Bay or Wollaston Creek. This mass of weathered tunnels, arches and columns form a labyrinth-like maze and was once an Aboriginal midden. Another option while anchored at Winyalkan Bay is a visit to a series of Wandjina and Gwion Gwion rock art galleries at Swift Bay.

In the evening, watch the sunset over the Indian Ocean while indulging in a gourmet BBQ.

**Overnight: Coral Expeditions' Coral Adventurer or Coral Geographer**

**Meals included: Breakfast; Lunch; Dinner**

#### Day 10 Vansittart Bay (Banjal)

Vansittart Bay is home to many cultural and historically significant sites, like the remarkable Gwion Gwion (Bradshaw) Aboriginal rock art galleries, estimated to be up to 20,000 years old. Jar Island is named after the pot shards found here, brought to the island by Makassar fishermen harvesting sea cucumbers (also known as trepang).

Nearby, on the Anjo Peninsula, lies the well-preserved wreckage of a US Air Force C-53 Skytrooper aircraft. The plane, flying from Perth to Broom back in 1942, crashed after the pilot lost his bearings and put it down on a salt pan near present-day Truscott Airbase.

**Overnight: Coral Expeditions' Coral Adventurer or Coral Geographer**

**Meals included: Breakfast; Lunch; Dinner**

#### Day 11 King George River & Falls (Oomari Falls)

Fed by the King George River draining across the Gardner Plateau, the 80-metre-tall King George Falls is the most impressive Kimberley waterfall and the highest twin falls in Western Australia. Before reaching the mist-like spray rising from the base of King George Falls, you'll cruise through steep-sided gorges carved by a flooded river system that cut through the Kimberley landscape 400 million years ago.

Early in the waterfall season, you may cruise around the base of impressive King George Falls, while in later months, view the sandstone cliffs' honeycomb erosion patterns up close.

**Overnight: Coral Expeditions' Coral Adventurer or Coral Geographer**

**Meals included: Breakfast; Lunch; Dinner**

#### Day 12 Darwin - Disembark Cruise

**Disembark: 08:30**

Your incredible adventure along the Kimberley Coast concludes in Darwin this morning at 08:30. Bid farewell to new-found friends, the Captain and crew.

After disembarkation, meet your transfer driver and head to your hotel then enjoy the rest of your day at leisure.



## 13-DAY CRUISE PACKAGE | KIMBERLEY WONDERS EXPEDITION CRUISE

# The Itinerary

### Itinerary 2

**Overnight:** Rydges Darwin Central or similar, Darwin, Northern Territory

**Meals included:** Breakfast

#### Day 13 Fly Home from Darwin

At the appropriate time, make your own way to the airport for your flight home.

Optional Upgrade: Private Transfer: Darwin Hotel to Airport

Add a private vehicle transfer from your hotel to the airport.

Meet your driver at your hotel, and be transferred to the airport - ready to check in for your flight. See current pricing in the important information.

*Please note: This transfer cannot be booked when a Stay Behind is arranged. Due to flight scheduling and availability, some customers may be required to arrive at the airport on Day 13 for a flight scheduled to depart in the early hours of Day 14. Flight times will be indicated on your final documentation, which you will receive 4-6 weeks prior to departure.*

**Meals included:** None



## 13-DAY CRUISE PACKAGE | KIMBERLEY WONDERS EXPEDITION CRUISE

### Tour Inclusions

#### HIGHLIGHTS

- Explore the spectacular Kimberley coast on a modern expedition ship
- Uncover hidden gems on included excursions with the expert Expedition Team
- Get up close to nature with all Zodiac and Xplorer small boat cruising included
- Discover more with the unrivalled local knowledge of Coral Expeditions, the pioneers of Kimberley cruising
- Take a thrilling zodiac ride through the rapids at Horizontal Falls
- Experience 20,000-year-old Indigenous rock art galleries and learn about Wandjina and Gwion Gwion art
- Admire the steep-sided gorges and feel the spray from the towering King George Falls on a King George River cruise
- Marvel at the beauty of the Buccaneer Archipelago, home to more than 800 islands
- Witness the breathtaking Montgomery Reef emerging from the sea with its receding 11-metre tides
- Keep an eye out for crocodiles, turtles, sharks and whales while cruising York Sound
- Cruise from the Prince Regent River to the beautiful terraced falls of King Cascade
- Visit the Mermaid Boab Tree in Careening Bay, carved in 1820 by the crew of the HMC Mermaid
- Explore the mangroves and rainforest-covered islands of Prince Frederick Harbour by Xplorer and Zodiac
- Enjoy time at leisure in Darwin and Broome before and after your expedition cruise

#### FLIGHTS

- Return domestic flights (economy class), surcharges may apply

#### CRUISE

- 10-night cruise aboard Coral Expeditions' Coral Adventurer or Coral Geographer ship
- Enjoy all-inclusive shore and Zodiac excursions on your cruise (scenic helicopter flight at Mitchell Falls at additional cost)
- Cruise aboard a small expedition ship with a maximum of 120 guests per sailing
- Daily lectures and briefings with guest lecturers
- Captain's welcome and farewell events, and open bridge access
- Standard Wi-Fi access included onboard

#### ACCOMMODATION

- 1 night of 4-star hotel accommodation in Darwin
- 1 night of 4-star hotel accommodation in Broome

#### DINING

- Itinerary 1: Enjoy 31 meals while cruising
- Itinerary 2: Enjoy 29 meals while cruising
- Selected wines, beers, spirits and non-alcoholic beverages are served complimentary with lunch and dinner while cruising
- 24-hour barista-style coffee and tea station

#### ESSENTIALS

- Airline taxes and surcharges
- Cruise port taxes and surcharges
- All entrance fees to national parks, ports, traditional owner fees and charges imposed by governing authorities

#### TRANSFERS

- Post-cruise transfer from the ship to your hotel

Offer available for a limited time or until sold out. TRIP A DEAL PTY LTD: 50149240433

Updated: 21 May 2026 06:13:48

Have a question about this deal? We're here to help.  
Call our friendly team on 1300 158 912

13

FREQUENT FLYER



Trip a Deal

# Important Information

*\*Please note: All information provided in this brochure is subject to both change and availability. Prior to purchase please check the current deal for up-to-date information. If you have already purchased this deal, the terms and conditions on your Purchase Confirmation apply and take precedence over the information in this brochure.*

## Booking Information

After purchase, you will receive a receipt and a Purchase Confirmation, directing you to an online Passenger Information Form. You must complete the Passenger Information Form within 72 hours of purchase.

Any special requests, preferences and optional extras MUST be clearly stated in your Passenger Information Form. Any change requested after submitting your Passenger Information Form cannot be guaranteed, is strictly subject to availability and will incur surcharges as outlined in the Schedule of Fees below.

*Please note: All countries and territories have different entry requirements in relation to vaccinations, quarantine/isolation periods and travel restrictions. Due to the evolving nature, we would ask all of our customers to monitor, meet and adhere to the specific requirements of their intended destination(s) in the lead-up to and immediately before travel, as well as any requirements post-travel upon their return.*

## Our Policies

### Cancellation and Refund Policy

By placing a booking with us, you acknowledge the following important information:

- **we act as your booking agent;** TripADeal is a booking services provider, and curates the Travel Offers available on our website. We act as your booking agent, and we receive payment for the Booking Services as part of the booking price, however, we do not provide any of the Travel Services (flights, accommodation, tours or other products or services) included in your booking – the Travel Services are provided by a number of third party Travel Suppliers.

- **each booking is unique;** our Travel Offers are made up of a variety of different components and are, during the booking process, uniquely tailored to suit your requirements, for example, departure dates and ports, flight and room upgrades, tour inclusions, etc.

- **changes/modifications to your booking may not be possible;** once your booking has been made, changes or modifications may not be possible, and where possible, may incur a fee. It is important to ensure that the information you provide during the booking process is accurate and up to date, and that you read the Travel Offer carefully before placing your order.

- **Travel Offers are a package;** our Travel Offers have been curated into package offerings and must be used as a package – individual components cannot be used independently of the full package offering.

- **our Travel Offers are generally non-refundable;** in order to provide great value Travel Offers, we work with a variety of Travel Suppliers to find the best deals – this often means the Travel Suppliers' offerings are non-refundable to ensure the best price. We recommend that you obtain travel insurance as soon as you make a booking with us. If your plans change, you can receive a full refund (excluding credit card fees) if you cancel at least 12 months in advance to your scheduled departure date.

To read more about our Cancellation and Refund Policy, please [click here](#).

### General Terms and Conditions

By placing your booking with us, you acknowledge and agree to our [Terms & Conditions](#), [Privacy Policy](#) and [Cancellation Policy](#).

## Offer Essentials

This Travel Offer is valid for travel on selected dates until the 27th August 2027. This Travel Offer is priced per person based on a twin share.

### Departure Dates & Surcharges

See checkout for live dates and availability.

### Single Traveller Supplement

For solo travellers, a mandatory single supplement applies:

Coral Deck Stateroom: \$10,500

Promenade Deck Stateroom: \$13,000

Explorer Deck Balcony Stateroom: \$17,000

Bridge Deck Balcony Stateroom

(Adventurer): \$18,500

Bridge Deck Suites (Geographer): \$24,000

Bridge Deck Suites (Adventurer): \$26,000

*Please note: Accommodation for single customers who are travelling on a tour or cruise package may be in a single room, depending on availability.*

### Child Policy

- No child discounts are offered. The full price applies to all children travelling with their parents.
- Valid for children 5 years old and over.

*Please note: Children must be accompanied by a responsible adult 18 years old and over to travel. No unaccompanied minors are allowed.*

## Flights

### Departure Cities

Sydney, \*Melbourne, \*Brisbane, \*Adelaide, Perth

### Departure City Surcharges

Melbourne: \$100 per person

Brisbane: \$150 per person

Adelaide: \$200 per person

### Domestic Flight(s)

Full-service airline(s) used

- Cabin Class: Economy Class

*Please note: We cannot accommodate one-way flights. Travellers must take all included flights within the package, and any flights intentionally forfeited will result in later flights being subject to cancellation.*

*Please note: From Australia, the flying journey to your destination may take up to 10 hours, with up to 1 stop. One of those stops may be within Australia.*

# Important Information

This is provided as a guide only - actual flight duration can vary depending on availability and airline schedules. Your booking's final details will be confirmed to you via email once available.

## Preferred Airline Surcharge

- Cabin Class: Economy Class
- Qantas: \$250 per person

### Please note:

- *Preferred airlines are subject to availability. If we are unable to fulfil your request, the above extra cost will be refunded.*
- *On any upgrade purchase, short-haul flights and domestic flight sectors are not guaranteed.*
- *In the event that a purchased stopover package and a purchased preferred airline upgrade are not compatible, you will have the option to receive a refund for the preferred airline upgrade or be offered an alternative stopover city option, e.g if you choose to fly with Singapore Airlines you cannot stopover in Dubai.*
- *Preferred airline refers to the marketing carrier and could include codeshare partners.*

## Arrive Early and Stay Behind Options

Fly out and return home up to 60 days pre and post your tour dates.

### Arrive Early

Darwin - From \$300 per person, subject to availability (Itinerary 1 only).

Broome - From \$300 per person, subject to availability (Itinerary 2 only).

### Stay Behind

Broome - From \$300 per person, subject to availability (Itinerary 1 only).

Darwin - From \$300 per person, subject to availability (Itinerary 2 only).

### Please note:

This option incurs a fee for adjusting the departure or return dates. This fee does not include extra nights' accommodation, meals and/or airport transfers, which will be at your own cost.

In addition, airport transfers listed as an

inclusion on the Travel Offer are considered void in the event that you select an Arrive Early/Stay Behind option. As such, you will need to arrange your own transfers at your cost.

We strongly advise against booking any pre or post-tour travel arrangements/accommodation until TripADeal confirms your flight details. If you choose to book before confirmation, we recommend opting for refundable reservations or having backup plans in case the tour does not proceed.

## Internal Flights:

If you select to Arrive Early or Stay Behind into a city other than the one where the tour begins or concludes (where applicable), the package will include an internal flight to your destination. This offer applies only to the cities listed in our Arrive Early & Stay Behind Options. If you wish to forfeit this flight, please advise our friendly team at the time of purchase. Please note that the package's cost does not change when you choose to forfeit your connecting flight.

*Please note: If you request to fly into cities not listed in our "Arrive Early & Stay Behind Options", we may be able to customise your itinerary. If possible, the flight's cost will be charged as an extra.*

## Cancellations & Changes:

Flight booking changes or cancellations after air tickets have been issued are not guaranteed and may incur additional fees and fare difference, subject to the airline cancellation and change policies. Flight changes are subject to availability at the time of booking.

## High-Season:

A high-season Arrive Early or Stay Behind can be purchased for an additional charge, subject to availability. For pricing, please refer to the cart.

## + 60 days:

You can fly out up to 60 days before your package's start date, and/or return home 60 days after your package's end date.

Should you wish to fly out or return home for more than 60 days from the tour,

please contact us to request availability. Additional costs may apply.

Estimated dates: Your estimated departure, return, and arrival dates are all subject to availability and may vary. The confirmed schedule for all flights will be provided when you receive your flight tickets.

High season surcharges apply to flights departing between the below date ranges:

- 3rd April 2026 - 20th April 2026
- 26th June 2026 - 17th July 2026
- 18th September 2026 - 9th October 2026
- 12th December 2026 - 26th January 2027
- 19th March 2027 - 28th April 2027
- 19th June 2027 - 18th July 2027
- 11th September 2027 - 10th October 2027
- 10th December 2027 - 31st January 2028
- 1st April 2028 - 30th April 2028
- 1st July 2028 - 23rd July 2028
- 16th September 2028 - 15th October 2028
- 9th December 2028 - 3rd January 2029

## Stopover Packages

Not available.

## Flight Class Upgrades

Business Class: For pricing, please refer to the payment cart at checkout.

### Please note:

- *Flight upgrades are subject to availability and pricing changes (if we cannot fulfil your request, the upgrade cost will be refunded).*
- *On any upgrade purchase, short-haul flights and domestic flight sectors are not guaranteed.*

## Outbound Flights

*Please note: Due to flight scheduling and availability, some departures may occur on Day 0. Affected customers must be available to depart the day before. Flight times will be indicated on your final documents, issued 4-6 weeks before departure.*

## Missed Flights

If you fail to arrive for your outbound flight, you risk all flight and land

# Important Information

arrangements in your destination being automatically cancelled by the airlines and land operator, respectively. Additional fees may apply to reinstate these services. If you miss your flight for whatever reason, please contact us as soon as possible to make arrangements.

## Cruise

### Coral Adventurer

Launched in April 2019, Coral Adventurer is a 120-passenger ship that takes you closer to unspoiled vistas in comfort, style and safety. When Coral Expeditions set out to build Coral Adventurer, they wanted a ship that would last decades. Their search for build quality and technology took them to the shipbuilders of Norway who have a long history of building durable ships for the harsh environments of the North Sea. They then looked deep inside to capture the requirements of their guests, their crew and the areas they sail to. The result is a happy marriage of modern shipbuilding technology and cruising Australian style.

### Coral Geographer

Launched in March 2021, Coral Geographer is a tropical expedition ship purpose-designed to access remote wilderness shores around the world, that are often inaccessible to large cruise vessels. Sister ship to Coral Adventurer (launched in 2019), the newest addition to the fleet features over 1000 square metres of open deck space, multiple bars, majority balcony staterooms and suites, and public areas featuring a collection of Australian Indigenous art. Able to navigate into shallow bays, disembark onto remote islands, and visit small villages without overwhelming the environment or community, Coral Geographer explores the hidden nooks and crannies of Australia's Kimberley Coast, Australia's West.

### Packing Checklist

Due to the warm, tropical climate of this region, guests should pack lightweight clothing which can be layered. Wet-landings are common and pants which can

be rolled up, shorts or a cotton skirt/dress are ideal. A lightweight long-sleeved shirt will help provide protection from the sun or any mosquitoes. Comfortable walking shoes and wet landing shoes such as reef walkers, Tevas or old sneakers are recommended.

### Onboard currency: AUD

### Cabins/Staterooms:

#### Coral Deck Staterooms

Size: 17m<sup>2</sup>

Coral Deck Staterooms are located below the Promenade Deck and are identically furnished with a junior King-size bed that can be separated into two singles. A wardrobe, desk and armchair are included. The compact ensuite has a toilet, shower and ample storage. A twin porthole window gives you views of the world outside.

#### Promenade Deck Stateroom

Size: 17m<sup>2</sup>

Promenade Deck Staterooms are located below the Explorer deck and furnished with a junior King-size bed that can be separated into two singles. A wardrobe, desk and armchair are included. The compact ensuite has a toilet, shower and ample storage. A large picture window gives you wide views of the world outside.

#### Explorer Deck Balcony Stateroom

Size: 21.4m<sup>2</sup>

The Explorer Deck staterooms are comfortably furnished with a junior King-size bed which can be separated into two singles. A wardrobe, desk and armchair are included. The compact ensuite has a toilet, shower and ample storage. Your private balcony has seating for two, from which you can view the passing coastal vistas. These staterooms are located on the Explorer deck.

#### Bridge Deck Balcony Stateroom (Coral Adventurer)

Size: 21.4m<sup>2</sup>

The two Bridge Deck staterooms are

comfortably furnished with a junior King-size bed which can be separated into two singles. A wardrobe, desk and armchair are included. The compact ensuite has a toilet, shower and ample storage. French windows opening to a balcony with seating for two give you a private perch to watch the panorama unfold outside. These staterooms are located on the bridge deck with superb views and are adjacent to the Cairns and Darwin suites.

#### Bridge Deck Balcony Suites (Coral Adventurer)

Size: 55.8m<sup>2</sup>

Bridge Deck Suites are spacious and elegant retreats after a busy day ashore. Suites are equipped with a lounge area, minibar and personal coffee machine. They have a spacious super King-sized bed. The 8m<sup>2</sup> private balcony has an outdoor daybed and lounge chair for two. A unique outside-facing bathroom with picture windows, bath and separate shower complete the suite experience. The complimentary minibar is replenished daily.

#### Bridge Deck Balcony Suites (Coral Geographer)

Size: 37.5m<sup>2</sup>

Bridge Deck Suites are spacious and elegant retreats after a busy day ashore. Suites are equipped with a lounge area, minibar and personal coffee machine. They have junior King-sized beds. A 3.5m<sup>2</sup> private balcony has an outdoor daybed and lounge chair for two. A unique outside-facing bathroom with a horizon bath completes the experience. A complimentary minibar is replenished daily.

#### *Please note:*

- All cabins are subject to availability; some cabins may have restricted views.
- Cruise cabins are booked on a guaranteed basis and are assigned by the cruise line prior to departure.

### Cruise Arrival and Departure Times:

Please keep in mind that the provided cruise arrival and departure times are an approximate and will be finalised upon receipt of your cruise tickets.

# Important Information

## Accommodation

### Accommodation Used:

#### 4-Star Properties (Self-Rated)

Darwin, Australia: Rydges Darwin Central  
Broome, Australia: Seashells Broome

*Please note: Accommodation/rooms offered are based on a lead-in room type and are subject to availability based on seasonality. In the instance a property is not available, a similar standard of accommodation will be provided. Properties will be confirmed and included in your travel pack, which you will receive 4-6 weeks before travel.*

### Accommodation Location

To ensure a comfortable and convenient experience for everyone, we've carefully selected hotels that best suit the size and specific needs of each group. While this means your accommodation may not be in the city centre, you can rest assured that our hotels are typically located near public transportation and a variety of local restaurants and attractions. Once your tour begins, your friendly driver or tour leader will be happy to help you get your bearings and offer assistance, should you need it.

### Extra Nights

Not available.

### Maximum Room Capacity

2 people.

### Triple Share

Not available.

### Bedding Configuration

Twin or double (subject to availability).

## Optional Tours/activities

### Itinerary 1

Private Transfer: Darwin Airport to Hotel: \$105 per person (Twin share), \$210 per person (Solo)

Private Transfer: Broome Hotel to Airport: \$65 per person (Twin share), \$130 per person (Solo)

### Itinerary 2

Private Transfer: Broome Airport to Hotel: \$65 per person (Twin share), \$130 per person (Solo)

Private Transfer: Darwin Hotel to Airport: \$105 per person (Twin share), \$210 per person (Solo)

#### Please note:

- *Optional private arrival or departure transfers (Day 1 or Day 13) cannot be booked when an Arrive Early or Stay Behind has been arranged.*
- *Prices are based per person, are subject to availability, time permitting and weather conditions*
- *The optional tours listed above must be purchased on checkout or over the phone before submitting your passenger information form (subject to availability).*
- *Some tours or shore excursions require minimum numbers to operate.*
- *Shore excursions can be booked/reserved directly with the cruise line before travel (subject to availability)*
- *Shore excursions can also be booked whilst onboard (subject to availability).*
- *Shore excursion programmes and itineraries may vary depending on local conditions and/or any unforeseen events concerning the timing on the day of the tour. Some excursions are very popular, and therefore availability cannot always be guaranteed, it is advisable to book in advance to avoid disappointment.*

## Exclusions

- Visa fees and requirements
- Domestic transfers and flights not stated in the deal offer
- Meals/beverages not stated in the deal offer
- Optional gratuities/tipping
- Optional activities/tours
- Personal expenses
- Travel insurance
- Any costs associated with an interruption to your tour as a result of an airline schedule change or cancellation

## Gratuities / Tipping

## Land

*Please note: Tipping for services provided is always a matter of personal discretion; however, please be aware that many locals consider tipping part of their normal remuneration, and they may approach you for payment; there's no need to be intimidated by the request.*

## Cruise

Gratuities (tips) are not required for Coral Expeditions cruises.

## Other Important Information

### TOUR GUIDE VS. TOUR LEADER

#### Tour Guide:

Often locals with intimate knowledge of an area, its culture, and history. Their role entails providing commentary, routing the tour, and seeing that people have a good time. They are a licensed, qualified expert who supplies specific information on the history, art, architecture and culture of the city/village/attraction where they are guiding the tour. The guide meets the group at the required place and leaves it at the end of the tour; they do not travel with the group.

#### Tour Leader:

An experienced person tasked with ensuring the smooth operation of tours, as well as providing practical support to passengers throughout the whole trip. Their role primarily includes assisting with accommodation, transportation between locations, and communication with tour guides at each stop. A tour leader may provide general guidance around a city or village and offer information on the place visited on the bus. However, they are not required to have specific art, architecture, or historical knowledge. They are not allowed to provide a guided tour or commentary of a city/village/attraction once there and, if caught doing so, can be fined.

*Please note: Tour leaders/guides are not a standard inclusion in all travel offers. Tour leaders/guides will only be made available*

# Important Information

*when required to enhance the experience of the destination featured.*

## CLIMATE & AVERAGE TEMPERATURES

### Dry Season (May – October)

The dry season, from May until October, is characterised by warm, dry sunny days and cool nights. Temperatures typically range from 21.6°C to 31.8°C, and humidity levels are much lower: around 60 to 65 per cent. Relatively cool weather arrives in May, and until July, nights are crisp with temperatures ranging from 17°C to 23°C. It is also the perfect time to explore the more remote areas of the region that can be off-limits during the wet season.

### Weather

We always suggest referring to an online source for the most up-to-date weather information for your destination/s.

## FLIGHTS

### Seat Selection & Frequent Flyer Points:

We do not arrange seat selection. It is essential to highlight that some airlines do not allow pre-selected seats. We strongly suggest you contact the airline directly with seating allocation requirements and/or arrive at the airport earlier to arrange your seating. While we do not add frequent flyer member details to bookings, you can do this directly with the airline once you have your flight information.

### Dietary Requests

Meal options and availability differ between airlines and routes therefore not all dietary requests can be accommodated. If your flight includes meals we will select the most suitable option available based on the dietary requirements you have specified. All meal requests are subject to airline approval and are not guaranteed, therefore we recommend preparing for your flight by bringing appropriate food for yourself, as required.

## CRUISE

### Embarkation / Disembarkation:

- Begins approximately 2 hours after docking.
- Due to security reasons, all guests must be on board 2 hours before sailing.
- Itineraries are subject to change at any time without notice.
- Check your specific sailing for exact departure and arrival times. All times are local to the port.

### Cruise Loyalty Discounts:

*Please note: Travellers must contact the cruise line directly upon receiving their travel documents in order to request any membership benefits they may be entitled to.*

## COACH TOUR

### Meals:

For meals not included, the tour leader (when available) will offer assistance with reservations, suggestions and directions to local restaurants. It is your responsibility to notify us of any dietary requests/requirements.

*Please note: We will do our best to meet your requests/requirements; however, we cannot guarantee that we will always be able to.*

### Luggage:

You will be responsible for all your personal belongings whilst on tour. You must carry your own luggage from the vehicle to the hotel room and back to the vehicle. The driver will assist with the uploading and unloading of bags from the vehicle.

## OTHER

### Mobility:

If you require wheelchair access please contact our friendly sales and service team to inquire on your behalf.

### Fitness Level Required:

Adventure (and spontaneity) create some of the best travel memories. Bear in mind, your home schedules and timings might not be adhered to on tour - it's all part of the fun!

A moderate level of fitness will be required. Expect a moderate pace of

touring with a focus on guided tours that may include full days with extended activity, guided city tours or nature walks. You will require a general level of fitness for unassisted navigation of stairs and inclines, longer distances with possible periods of standing when visiting sites, walking on sloping, uneven ground or elevations. You will be responsible for your own luggage and have the ability to board all modes of transport without assistance.

*Please note: Many areas may be inaccessible to wheelchairs or mobility scooters, where the unassisted use of personal walking sticks and other aids may be required. Although some assistance may be available, every traveller should be self-reliant during all aspects of their travel.*

*Please note: It is expected that every traveller must be self-reliant and able to undertake all aspects of their own travel. Please speak to your booking agent about your personal circumstances and any assistance requirements to ensure this tour is right for you.*

*Please note: If you have any concerns, please consult your healthcare provider prior to purchase/travel.*

### Sightseeing:

*Please note: If entry to a site is affected by changes in operating hours or public holiday closures, your itinerary, where possible, may be adjusted, or a similar activity will be offered in its place (subject to availability).*

### Wildlife sighting:

TripADeal cannot guarantee animal sightings on tour. Wildlife are unpredictable and factors such as weather conditions, predatory fear and animal movements can impact sightings.

### Shopping:

Shopping overseas can be a daunting and confusing experience, especially when there is a language barrier. Please be very cautious when foreign currencies and prices are involved. If paying by credit card, please pay close attention to the amount you are being charged and keep all your

# Important Information

receipts.

Do not make any purchases you are not comfortable with or feel pressured into. If you are uncertain or need assistance with the language barrier, please seek assistance from your Tour Guide/Leader. Please refer to our [Terms and Conditions](#) regarding shopping for further information.

## Visas

For travellers entering from outside Australia, and who do not have Australian citizenship or residency, a visa may be required.

### Important:

- *Please start arranging your visa three weeks before departure to account for any delays due to consulate operating hours.*
- *Visa rules are subject to change. Please check with the nearest embassy, consulate or immigration department of the destination/s you are visiting once you receive your travel documentation to ensure you have the most up to date information.*
- *It is your responsibility to be travel-ready and ensure that you are aware and comply with any destination or travel requirements, including the validity of all required travel documents.*
- *Passengers who are not Australian citizens must also check with the respective consulate or visa agency to determine what their visa requirements are and what personal identification is required.*
- *It is also important to note that some areas of employment, such as journalism, government authorities and charity organisations, may have additional restrictions in applying for visas. This may, in turn, affect the type of application required.*

## Travel Insurance

Embarking on your next trip is exciting, and while you hope the unexpected does not happen, it is best to be prepared. We strongly recommend you take out travel insurance when making your booking. Whether it's a potential medical

emergency, a flight cancellation, a delayed suitcase, or an unforeseen event, it's important to ensure you're adequately protected. For more information or advice visit <https://www.tripadeal.com.au/travel-insurance>

## Schedule Of Fees

### Voluntary Changes

This includes booking changes requested by you, including but not limited to those changes requiring an airline ticket or a Purchase Confirmation reissue.

- Changes - \$100 per booking and any additional charges applied by the airline/ cruise company/accommodation/other travel providers.

### Name Changes Due To Passenger Error

- If the incorrect name has been provided, charges of \$100 per booking and any additional charges applied by the airline/ cruise company/accommodation/other travel providers.

### Supplier Fees

In the event the tour package you have purchased is unable to proceed, and/or a Travel Supplier is unable to fulfil the tour due to external circumstances (Limitation of Liability e.g. a Force Majeure event), there may be a fee or amount of money that is withheld by our Suppliers and is unrecoverable. This may be due to non-refundable airline tickets, cancellation penalties with cruise cabins or unrecoverable payments with our land/accommodation partners. If refunds are not available from Suppliers, we will endeavour to obtain a travel credit on the best terms available and communicate these outcomes to you. In the event we are unable to obtain a refund or travel service credit, or part thereof, this cost is passed on to the customer as a Supplier Fee.