



Alaska, Denali & Yukon Rail & Sail

CANADA • UNITED STATES • ALASKA

The Offer

Enjoy a cool change on this 16-day journey to gold rush-era outposts through rugged Alaskan wilderness and across the glacial fjords of the Inside Passage.

Starting in Alaska's capital, Anchorage, your adventure begins aboard Holland America's McKinley Explorer®. This luxurious two-level glass-domed railcar offers a premier vantage point to take in dramatic vistas. Ride through Broad Pass and cross the dramatic Hurricane Gulch before arriving at Denali National Park. Stay on the doorstep of the park in the exclusive Denali Lodge, join a Tundra Wilderness Tour to seek out grizzly bears, caribou, Dall sheep, moose and wolves in their natural environment.

Head to Fairbanks for a Riverboat Discovery tour, visiting a Chena Athabascan traditional village with a Native Alaskan guide. Fly to Dawson City in the Yukon region, home to the Klondike Gold Rush. Ride the historic White Pass and Yukon Route Railroad on a round trip from the former gold rush town, Skagway, where your cruise ship, Holland America's Koningsdam awaits.

Over four nights, you'll cruise UNESCO-listed Glacier Bay, taking in the breathtaking vistas from the deck, or indulging in the ship's many restaurants, bars, gyms, and entertainment venues. Watch for playful sea otters, breaching humpback whales, and calving glaciers as you sail the Inside Passage, stopping in colourful Ketchikan before heading toward your final destination, Vancouver.

This unforgettable journey includes all flights, luxury rail excursion, a 4-night Inside Passage Cruise, 9 nights of accommodation, 12 meals and more!

Want more? Upgrade your cabin and admire the scenery from your private verandah, or extend your stay up to 60 days before and after your trip.

Offer available for a limited time or until sold out. TRIP A DEAL PTY LTD: 50149240433

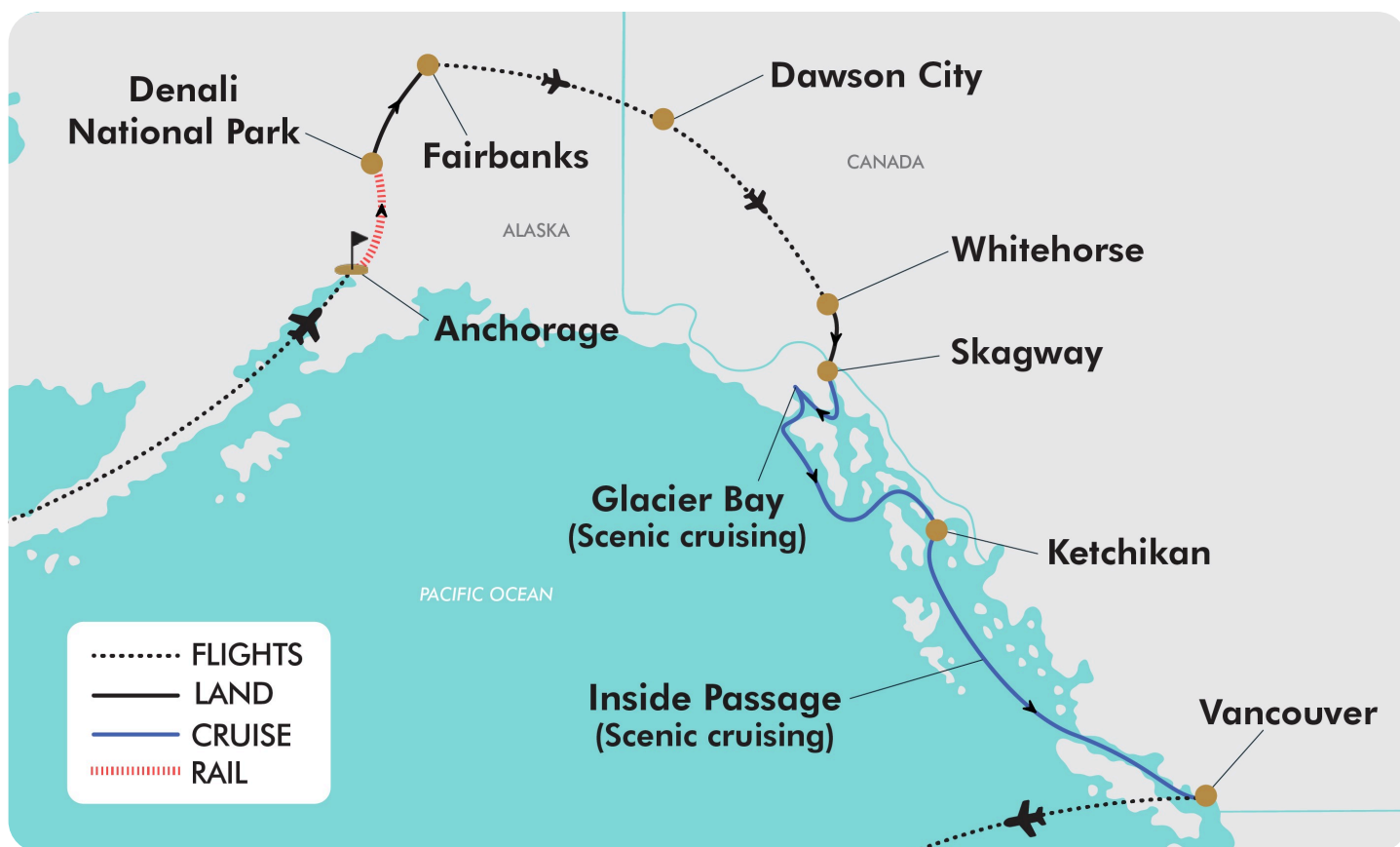
Updated: 05 Feb 2026 14:03:11

Have a question about this deal? We're here to help.
Call our friendly team on 1300 158 912



16-DAY CRUISE PACKAGE | ALASKA, DENALI & YUKON RAIL & SAIL

The Map



Offer available for a limited time or until sold out. TRIP A DEAL PTY LTD: 50149240433

Updated: 05 Feb 2026 14:03:11

Have a question about this deal? We're here to help.
Call our friendly team on 1300 158 912



16-DAY CRUISE PACKAGE | ALASKA, DENALI & YUKON RAIL & SAIL

The Itinerary

Day 1 Australia (or New Zealand) - Anchorage, Alaska, USA

Today, depart from Australia (or New Zealand) for Anchorage, Alaska.

Upon arrival, meet your driver and transfer to the hotel for check-in.

Please note: Due to flight scheduling and availability, some departures may occur on Day 0. Affected customers must be available to depart the day before. Flight times will be indicated on your final documents, which will be issued 4-6 weeks before departure.

Overnight: Westmark Hotel & Conference Centre, Anchorage, Alaska (or similar)

Meals included: In-Flight

Day 2 Anchorage - Denali National Park, Alaska

This morning, meet your driver at the hotel and transfer to the rail depot. Here, your unforgettable Alaskan adventure begins aboard Holland America's McKinley Explorer®, a luxurious, two-level glass-domed railcar that's designed for optimal wilderness viewing.

Settle into your assigned, forward-facing seat and relax as the untamed beauty of Alaska unfolds around you. Travel through the sweeping landscapes of Broad Pass and cross the dramatic Hurricane Gulch, while expert guides share fascinating stories and insights about the region. With luck, you'll catch your first breathtaking glimpse of Mount Denali as it emerges on the horizon.

Step onto the open-air platform to soak in the crisp mountain air and panoramic views, or simply unwind as bartenders craft signature cocktails served with a side of unforgettable scenery. During the ride, regionally-inspired breakfast and lunch options are available for purchase from the onboard dining car.

Upon arrival, your luggage will be waiting for you at the lodge, allowing for a seamless check-in and a relaxing start to your two-night stay at the doorstep of Denali National Park. Spend your afternoon exploring Denali Square, the heart of the lodge experience, where you can shop, dine, and immerse yourself in the spirit of the park.

The total journey from Anchorage to Denali National Park takes approximately 8-9 hours. Your expected arrival time is 17:15.

Overnight: Holland America Denali Lodge, Denali National Park, Alaska

Meals included: None

Day 3 Tundra Wilderness Tour - Denali National Park, Alaska

Alaska's Denali National Park is where beauty is untamed and majestic animals roam their wide-open habitat as they have for millennia.

Today, you will experience this up close on a Tundra Wilderness Tour and travel deep into the heart of Denali for the adventure of a lifetime. This comfortable, comprehensive and fully-narrated, 5 to 6-hour excursion takes you 70 kilometres into the park's unspoiled wilderness. It offers your best chance to see Alaska's marquee animals, including grizzly bears, caribou, Dall sheep, moose and wolves.





16-DAY CRUISE PACKAGE | ALASKA, DENALI & YUKON RAIL & SAIL

The Itinerary

The Tundra Wilderness Tour is designed to provide a comfortable way to explore Denali. It includes narration provided by a knowledgeable driver/guide and features large screens so you won't miss a thing. A light snack is provided, and a box lunch is available to purchase.

Overnight: Holland America Denali Lodge, Denali National Park, Alaska

Meals included: None

Day 4 Denali National Park - Fairbanks, Alaska

Today, travel by coach from Denali National Park to Fairbanks.

Here, embark on a Riverboat Discovery tour. Visit the home of the late four-time Iditarod champion, Susan Butcher, then enjoy a tour of a Chena Athabascan traditional village with a Native Alaskan guide. Shop for souvenirs at the Steamboat Landing trading post before returning to your hotel for the evening.

Westmark Fairbanks Hotel and Conference Centre, Fairbanks, Alaska (or similar)

Meals included: Lunch

Day 5 Fairbanks, Alaska, USA - Dawson City, Yukon, Canada

At the appropriate time, meet your driver and transfer to the airport for your flight to Dawson City, Canada.

Venture where few have gone before, to the heart of the subarctic Tr'ondëk-Klondike region. This UNESCO World Heritage site tells the story of the Tr'ondëk Hwëch'in people and the effects of Gold Rush expansion and colonialism.

Enjoy the rest of your day at leisure in Dawson City, which is known for its sweeping landscapes, Native traditions and Klondike Gold Rush history.

Overnight: Holland America Dawson City Inn, Dawson City, Canada (or similar)

Meals included: None

Day 6 Klondike Gold Tour - Dawson City, Yukon

Today, you will follow in the footsteps of 1896 prospectors at the meeting of the Klondike and Yukon Rivers on a Klondike Gold tour.

At the appropriate time, meet your guide at the hotel to begin your tour. During this 2-hour tour, you'll visit the National Historic Site that triggered the Klondike Gold Rush. Enjoy time at Gold Dredge 4 while a Parks Canada guide shares the history of gold dredging in the area.

After the tour, you will return to your hotel and enjoy the rest of your day at leisure.

Overnight: Holland America Dawson City Inn, Dawson City, Canada (or similar)

Meals included: None

Day 7 Dawson City - Whitehorse, Canada - Skagway, Alaska, USA

At the appropriate time, meet your driver at the hotel and transfer to the airport.

Board a flight to Whitehorse before continuing approximately 2 hours by coach along the Klondike highway to Skagway.



16-DAY CRUISE PACKAGE | ALASKA, DENALI & YUKON RAIL & SAIL

The Itinerary

Check in at your hotel and enjoy the rest of your day at leisure.

Overnight: Holland America Skagway Inn, Skagway, Alaska (or similar)

Meals included: None

Day 8 White Pass & Yukon Railway - Skagway, Alaska

This morning, take an unforgettable journey aboard the "Scenic Railway of the World", the historic, narrow-gauge White Pass and Yukon Route Railroad to the White Pass Summit. Carved through some of the North's most rugged terrain, this 1898 engineering marvel climbs nearly 3,000 feet for spectacular views.

Today's round-trip adventure on is an unforgettable way to see this area. Built during the Klondike Gold Rush, this engineering wonder is an International Historic Civil Engineering Landmark, an honour shared with the Eiffel Tower, the Panama Canal and the Statue of Liberty. The railroad was officially completed in 1900. Restored cars pulled by vintage diesel locomotives climb nearly 3,000 feet over steep grades and cliff-hanging turns. Watch for Bridal Veil Falls, Inspiration Point and Dead Horse Gulch, mountains, glaciers, gorges, waterfalls, tunnels, trestles and historic sites.

The White Pass and Yukon Railway tour includes return transfers to and from your hotel.

Overnight: Holland America Skagway Inn, Skagway, Alaska (or similar)

Meals included: None

Day 9 Skagway, Alaska - Begin 4-Night Cruise

Depart: 20:00

Enjoy a day at leisure until it is time to transfer to the port to board your 4-night Inside Passage cruise. Once onboard the ship, enjoy the rest of your evening at leisure as you set sail on the next leg of your Alaskan adventure.

Overnight: Holland America - Koningsdam

Meals included: Dinner

Day 10 Glacier Bay, Alaska (Scenic Cruising)

Close your eyes and take in the sounds of "living" ice, the shrill cries of soaring eagles and the splash of a breaching humpback whale. Look out for frosted peaks towering over mossy forests, wide tidewater glaciers and marine wildlife in Glacier Bay.

For this part of your cruise, local experts come aboard for an enriching experience. As a proud Authorised Concessioner for Glacier Bay National Park, Holland America Line partners with rangers and local Huna Tlingit guides who provide expert insight into this diverse ecosystem and millennia-old culture. You'll leave Glacier Bay with a shorter bucket list and a deeper appreciation of this 3.3 million-acre UNESCO World Heritage Site.

Prepare for unpredictable weather, even in summer, and dress for rain. Pack a hat, gloves, wool or fleece layers, a warm coat and waterproof gear to comfortably admire the landscape from the open deck of your ship. With fjords, inlets, rivers and streams galore, it's also recommended to bring binoculars.

Please note: Route and timing are subject to weather and ice conditions.



16-DAY CRUISE PACKAGE | ALASKA, DENALI & YUKON RAIL & SAIL

The Itinerary

Overnight: Holland America - Koningsdam

Meals included: Breakfast; Lunch; Dinner

Day 11 Ketchikan, Alaska, USA

Arrive: 11:00 - Depart: 19:00

Cruise to Ketchikan, named Alaska's first city because it's the first major landfall for most cruisers as they enter the picturesque fjords of the Inside Passage. The town clings to the banks of the Tongass Narrows and is flanked by green forests that are nurtured by abundant rain.

Ketchikan has long been an important hub of the salmon fishing and fish packing industries. Visitors can try their luck at sport fishing or simply savour the fresh seafood at one of the local restaurants (charges apply).

The area is also one of the best spots along the Inside Passage to explore the rich cultural sights of Native Alaskan nations like the Tlingit, Haida and Tsimshian. You can see intricately carved totem poles at the Totem Heritage Centre and Totem Bight State Park. Saxman Village, just outside of Ketchikan, offers the chance to see Tlingit culture in action with working carvers and a dance show in the clan house (optional shore excursion).

Overnight: Holland America - Koningsdam

Meals included: Breakfast; Lunch; Dinner

Day 12 Inside Passage (Scenic Cruising)

Alaska's Inside Passage is a protected network of waterways that wind through glacier-cut fjords and lush temperate rainforests along the rugged coast of Southeast Alaska.

Arguably one of the greatest cruising routes in the world, the Inside Passage stretches through stunning landscapes, from Misty Fjords National Monument to the famed Glacier Bay National Park and Preserve. Sailing the Inside Passage offers opportunities to spot some of Alaska's and Canada's most iconic wildlife. Look out for humpback whales and orcas plying the bountiful waters alongside the ships, bald eagles soaring overhead and brown bears lumbering on the shoreline.

Overnight: Holland America - Koningsdam

Meals included: Breakfast; Lunch; Dinner

Day 13 Disembark Cruise - Vancouver, Canada

Arrive: 07:00

Enjoy your final breakfast onboard as your ship docks in Vancouver. Once off the ship, make your own way to your centrally-located hotel for the rest of your day at leisure. Vancouver offers the perfect combination of urban meets nature. Take in picturesque views of the mountains while exploring the city's local hot spots like Stanley Park, Granville Island, Gastown and more at your own pace. Don't forget to sample the best of the local culinary and cocktail scene for something truly unique (not included).

Overnight: Hotel Belmont Vancouver - Mgallery collection, Vancouver, Canada (or similar)

Meals included: Breakfast

Day 14 Vancouver, Canada - Australia (or New Zealand)

At the appropriate time, make your own way to the airport for your flight home.



16-DAY CRUISE PACKAGE | ALASKA, DENALI & YUKON RAIL & SAIL

The Itinerary

Meals included: In-Flight

Day 15 In Transit

Meals included: None

Day 16 Arrive in Australia (or New Zealand)

Welcome home!

Meals included: None



16-DAY CRUISE PACKAGE | ALASKA, DENALI & YUKON RAIL & SAIL

Tour Inclusions

HIGHLIGHTS

Discover the rugged beauty of Alaska on this once-in-a-lifetime cruise and land adventure

Marvel at untamed nature, from towering peaks and thundering glaciers to wildlife-rich forests and waterways

Traverse Alaska's spectacular wilderness aboard Holland America's luxury glass-domed McKinley Explorer® railcar

Spend two unforgettable nights at the doorstep of Denali National Park, home to breathtaking landscapes & iconic wildlife

Embark on a guided Tundra Wilderness Tour in search of grizzlies, moose, Dall sheep and more in the wild

Enjoy a Riverboat Discovery tour in Fairbanks, Alaska

Experience Canada's Yukon region with 2 nights in Dawson City

Discover the region's history on a guided Klondike Gold Tour

Explore White Pass and the Yukon Railroad on a guided tour of Skagway, Alaska

Embark on a 4-night Inside Passage cruise from Skagway to Vancouver

Learn from local rangers and Huna Tlingit guides while cruising Glacier Bay

Discover Ketchikan, rich in Native Alaskan culture and famous for its totem poles and seafood

Enjoy time at leisure in Vancouver, where urban sophistication meets mountain and ocean views

FLIGHTS

Return international full-service flights (economy class), surcharges may apply

One-way international flight (economy class) from Fairbanks, Alaska, USA to Dawson City, Canada

One-way internal flight (economy class) from Dawson City to Whitehorse, Canada

CRUISE

4-night cruise of Alaska's Inside Passage aboard Holland America's Koningsdam

HAVE IT ALL CRUISE UPGRADE

Upgrade your cruise with Holland America's Have It All™ premium package for just \$85 per person, per night when you pre-book. Secure exceptional value and enjoy the following additional inclusions while cruising:

USD \$100 shore excursion credit

Signature beverage package with a selection of wine, beer, spirits, cocktails and more

1-night of specialty dining at an award-winning restaurant

Wi-Fi surf package

Please note: See the Important Information for full details

RAIL

Journey aboard Holland America's exclusive McKinley Explorer®

Ride a luxurious, two-level glass-domed railcar through the Denali National Park, Alaska

ACCOMMODATION

1-night of quality accommodation in Anchorage, Alaska

2-nights of accommodation at Holland America's exclusive Denali Lodge, Alaska

1-night of quality accommodation in Fairbanks, Alaska

2-nights of quality accommodation in Dawson City, Canada

2-nights of quality accommodation in Skagway, Alaska

1-night of 4-star accommodation in Vancouver, Canada



16-DAY CRUISE PACKAGE | ALASKA, DENALI & YUKON RAIL & SAIL

Tour Inclusions

DINING

12 meals including all while cruising

ESSENTIALS

- English-speaking guides
- Airline taxes & surcharges
- Cruise port taxes & surcharges

TRANSFERS

- Day 1: Anchorage airport to hotel
- Day 2: Anchorage hotel to rail depot
- Day 5: Fairbanks hotel to airport
- Day 5: Dawson City Airport to hotel
- Day 7: Dawson City hotel to airport
- Day 7: Whitehorse airport to Skagway hotel
- Day 9: Skagway hotel to cruise port

Important Information

**Please note: All information provided in this brochure is subject to both change and availability. Prior to purchase please check the current deal for up-to-date information. If you have already purchased this deal, the terms and conditions on your Purchase Confirmation apply and take precedence over the information in this brochure.*

Booking Information

After purchase, you will receive a receipt and a Purchase Confirmation, directing you to an online Passenger Information Form. You must complete the Passenger Information Form within 72 hours of purchase.

Any special requests, preferences and optional extras MUST be clearly stated in your Passenger Information Form. Any change requested after submitting your Passenger Information Form cannot be guaranteed, is strictly subject to availability and will incur surcharges as outlined in the Schedule of Fees below.

Please note: All countries and territories have different entry requirements in relation to vaccinations, quarantine/isolation periods and travel restrictions. Due to the evolving nature, we would ask all of our customers to monitor, meet and adhere to the specific requirements of their intended destination(s) in the lead-up to and immediately before travel, as well as any requirements post-travel upon their return.

Our Policies

Cancellation and Refund Policy

By placing a booking with us, you acknowledge the following important information:

- **we act as your booking agent;** TripADeal is a booking services provider, and curates the Travel Offers available on our website. We act as your booking agent, and we receive payment for the Booking Services as part of the booking price, however, we do not provide any of the Travel Services (flights, accommodation, tours or other products or services) included in your booking – the Travel Services are provided by a number of third party Travel Suppliers.

- **each booking is unique;** our Travel Offers are made up of a variety of different components and are, during the booking process, uniquely tailored to suit your requirements, for example, departure dates and ports, flight and room upgrades, tour inclusions, etc.

- **changes/modifications to your booking may not be possible;** once your booking has been made, changes or modifications may not be possible, and where possible, may incur a fee. It is important to ensure that the information you provide during the booking process is accurate and up to date, and that you read the Travel Offer carefully before placing your order.

- **Travel Offers are a package;** our Travel Offers have been curated into package offerings and must be used as a package – individual components cannot be used independently of the full package offering.

- **our Travel Offers are generally non-refundable;** in order to provide great value Travel Offers, we work with a variety of Travel Suppliers to find the best deals – this often means the Travel Suppliers' offerings are non-refundable to ensure the best price. We recommend that you obtain travel insurance as soon as you make a booking with us.

To read more about our Cancellation and Refund Policy, please [click here](#).

General Terms and Conditions

By placing your booking with us, you acknowledge and agree to our [Terms & Conditions](#), [Privacy Policy](#) and [Cancellation Policy](#).

Offer Essentials

This Travel Offer is valid for travel on selected dates until the 16th August 2027. This Travel Offer is priced per person based on a twin share.

Departure Dates & Surcharges

See checkout for live dates and availability.

Single Traveller Supplement

For solo travellers, a mandatory single

supplement applies:

Interior Stateroom: \$3,400

Ocean View Stateroom (Unobstructed): \$3,650

Verandah Stateroom (Obstructed): \$3,750

Verandah Stateroom (Unobstructed): \$3,850

Please note: Accommodation for single customers who are travelling on a tour or cruise package may be in a single room, depending on availability.

Child Policy

- No child discounts are offered. The full price applies to all children travelling with their parents.
- Valid for children 1 years old and over.

Please note: Children must be accompanied by a responsible adult 18 years old and over to travel. No unaccompanied minors are allowed.

Flights

Departure Cities

Sydney, *Melbourne, Brisbane, *Adelaide, *Perth, Auckland

Departure City Surcharges

Melbourne: \$100 per person

Adelaide: \$300 per person

Perth: \$700 per person

International Flight(s)

Full-service airline(s) used

- Cabin Class: Economy Class

Please note: We cannot accommodate one-way flights. Travellers must take all included flights within the package, and any flights intentionally forfeited will result in later flights being subject to cancellation.

Please note: From Sydney, Melbourne, Brisbane or Auckland, the flying journey to your destination may take up to 28 hours, with up to 2 stops. This is provided as a guide only - actual flight duration can vary depending on availability and airline schedules. Your booking's final details will be confirmed to you via email once available.

Please note: From Adelaide, the flying journey to your destination may take up to 30 hours,

Important Information

with up to 2 stops. This is provided as a guide only - actual flight duration can vary depending on availability and airline schedules. Your booking's final details will be confirmed to you via email once available.

Please note: From Perth, the flying journey to your destination may take up to 34 hours, with up to 3 stops. This is provided as a guide only - actual flight duration can vary depending on availability and airline schedules. Your booking's final details will be confirmed to you via email once available.

This is provided as a guide only - actual flight duration can vary depending on availability and airline schedules. Your booking's final details will be confirmed to you via email once available.

Domestic Flight(s) Used

- Cabin Class: Economy Class
- Route
- Fairbanks, Alaska to Dawson City, Canada
- Dawson City to Whitehorse, Canada
- Internal Flight Information
- Baggage allowance per person:
- 1 x 23kg of checked baggage
- 1 x 7kg of carry on baggage

Preferred Airline Surcharge

- Cabin Class: Economy Class
- Air Canada: \$300 per person

Please note:

- *Preferred airlines are subject to availability. If we are unable to fulfil your request, the above extra cost will be refunded.*
- *On any upgrade purchase, short-haul flights and domestic flight sectors are not guaranteed.*
- *In the event that a purchased stopover package and a purchased preferred airline upgrade are not compatible, you will have the option to receive a refund for the preferred airline upgrade or be offered an alternative stopover city option, e.g if you choose to fly with Singapore Airlines you cannot stopover in Dubai.*
- *Preferred airline refers to the marketing carrier and could include codeshare partners.*

Arrive Early and Stay Behind Options

Fly out and return home up to 60 days pre and post your tour dates.

Arrive Early

Anchorage, USA - From \$300 per person, subject to availability.
San Francisco, USA - From \$480 per person, subject to availability.
Los Angeles, USA - From \$480 per person, subject to availability.

Stay Behind

Vancouver, Canada - From \$300 per person, subject to availability.
San Francisco, USA - From \$480 per person, subject to availability.
Los Angeles, USA - From \$480 per person, subject to availability.

Please note:

This option incurs a fee for adjusting the departure or return dates. This fee does not include extra nights' accommodation, meals and/or airport transfers, which will be at your own cost.

In addition, airport transfers listed as an inclusion on the Travel Offer are considered void in the event that you select an Arrive Early/Stay Behind option. As such, you will need to arrange your own transfers at your cost.

We strongly advise against booking any pre or post-tour travel arrangements/accommodation until TripADeal confirms your flight details. If you choose to book before confirmation, we recommend opting for refundable reservations or having backup plans in case the tour does not proceed.

Internal Flights:

If you select to Arrive Early or Stay Behind into a city other than the one where the tour begins or concludes (where applicable), the package will include an internal flight to your destination. This offer applies only to the cities listed in our Arrive Early & Stay Behind Options. If you wish to forfeit this flight, please advise our friendly team at the time of purchase. Please note that the package's cost does not change when you choose to forfeit

your connecting flight.

Please note: If you request to fly into cities not listed in our "Arrive Early & Stay Behind Options", we may be able to customise your itinerary. If possible, the flight's cost will be charged as an extra.

Cancellations & Changes:

Flight booking changes or cancellations after air tickets have been issued are not guaranteed and may incur additional fees and fare difference, subject to the airline cancellation and change policies. Flight changes are subject to availability at the time of booking.

High-Season:

A high-season Arrive Early or Stay Behind can be purchased for an additional charge, subject to availability. For pricing, please refer to the cart.

+ 60 days: You can fly out up to 60 days before your package's start date, and/or return home 60 days after your package's end date. Should you wish to fly out or return home for more than 60 days from the tour, please contact us to request availability. Additional costs may apply.

Estimated dates:

Your estimated departure, return, and arrival dates are all subject to availability and may vary. The confirmed schedule for all flights will be provided when you receive your flight tickets.

High season surcharges apply to flights departing between the below date ranges:

- 15th September 2025 - 12th October 2025
- 1st December 2025 - 31st January 2026
- 3rd April 2026 - 20th April 2026
- 26th June 2026 - 17th July 2026
- 18th September 2026 - 9th October 2026
- 12th December 2026 - 26th January 2027
- 19th March 2027 - 28th April 2027
- 19th June 2027 - 18th July 2027
- 11th September 2027 - 10th October 2027
- 10th December 2027 - 3rd January 2028

Stopover Packages

Not available

Important Information

Flight Class Upgrades

Business or Premium Economy Class: For pricing, please refer to the payment cart at checkout.

Please note:

- *Flight upgrades are subject to availability and pricing changes (if we cannot fulfil your request, the upgrade cost will be refunded).*
- *On any upgrade purchase, short-haul flights and domestic flight sectors are not guaranteed.*

Outbound Flights

Please note: Due to flight scheduling and availability, some departures may occur on Day 0. Affected customers must be available to depart the day before. Flight times will be indicated on your final documents, issued 4-6 weeks before departure.

Missed Flights

If you fail to arrive for your outbound flight, you risk all flight and land arrangements in your destination being automatically cancelled by the airlines and land operator, respectively. Additional fees may apply to reinstate these services. If you miss your flight for whatever reason, please contact us as soon as possible to make arrangements.

Cruise

Holland America MS Koningsdam Ship:

As the flagship of Holland America Line's Pinnacle Class, the MS Koningsdam blends the line's 150-year nautical heritage with a contemporary, music-inspired design. Launched in 2016, this 2,650-passenger vessel is celebrated for its sophisticated atmosphere, characterised by light-filled spaces and fluid architectural lines that mimic the curves of musical instruments.

Culinary Excellence

The onboard dining experience is a central highlight, featuring a mix of included and specialty venues:

- The Dining Room: A stunning two-story space serving five-course menus.

- Specialty Gems: The Pinnacle Grill for premium steaks, Tamarind for exotic Pan-Asian flavours, and the French-inspired Rudi's Sel de Mel
- Casual Bites: The Grand Dutch Café offers traditional treats like bitterballen, while Dive-In serves what many consider the best burgers at sea.

Entertainment & Enrichment

The "experience" on Koningsdam is anchored by the Music Walk®, a collection of world-class venues:

- B.B. King's Blues Club: High-energy Memphis blues and funk.
- Billboard Onboard: Duelling pianists playing chart-topping hits.
- Rolling Stone Lounge: A live band covering the history of rock and pop.
- World Stage: Features a 270-degree LED screen for immersive visual and musical performances.

Facilities for Relaxation

For wellness, the Greenhouse Spa & Salon provides thermal suites and hydro-pools, while the Lido Pool features a retractable glass roof for all-weather swimming. Whether you are blending your own wine at BLEND or enjoying a quiet moment in the Crow's Nest, the Koningsdam offers a refined, "mid-sized" luxury feel that avoids the frantic pace of larger mega-ships.

Please note: Specialty dining venues, spa treatments, and BLEND wine-making experiences are subject to additional charges

Onboard currency:

USD \$

Holland America 'Have It All' Upgrade

The longer your cruise, the more you can explore.

Package Inclusions:

- Receive shore excursion credit to apply towards a variety of adventures and experiences. For Alaska Cruisetours and 6-9 Day cruises US\$100 per person shore excursion credit

- Signature Beverage Package: Choose from a large selection of wine, beer, spirits and cocktails, plus non-alcoholic options like sodas, specialty coffees and more - with service charges included. (Daily limit of 15 beverages per person, which includes all beverages priced at USD \$11.00 or less and includes beverage charges).
- Speciality Dining: Enhance your cruise with award-winning speciality dining at Pinnacle, Canaletto or Tamarin. 1-night speciality dining per person (Restaurant availability is based on cruise ship)
- Wi-Fi surf package: Stay connected throughout your journey. Surf the web, use social media, check email and send messages to family and friends.

Cabins/Staterooms:

Amenities

- Daily housekeeping
- 24-hour room service (select items may incur a nominal service charge)
- Rituals soap, lotion and shampoo
- Luxurious bathrobes
- Generous storage
- Fresh fruit upon request
- Safe
- Ice service
- Shoeshine
- TV with On Demand movies and programming

Interior Stateroom:

Features two lower beds that can convert to one queen-size bed and features Holland America's signature Mariners Dream bed with plush Euro-Top mattresses, premium massage shower heads and a host of amenities are featured in these very comfortable staterooms.

Oceanview Stateroom (Unobstructed):

Features two lower beds that can convert to one queen-size bed and features Holland America's signature Mariners Dream bed with plush Euro-Top mattresses, premium massage shower heads and a host of amenities and an ocean view.

Important Information

Verandah Stateroom (Obstructed):

Filled with light from floor-to-ceiling windows overlooking a private verandah, these staterooms include a sitting area and two lower beds that are convertible to one queen-size bed that has Holland America's signature Mariner's Dream bed with plush Euro-Top mattresses. Shower with premium massage shower heads. Please note: The view from the private verandah is partially or fully obstructed by lifeboats or ship structures.

Verandah Stateroom (Unobstructed):

Filled with light from floor-to-ceiling windows overlooking a private verandah, these staterooms include a sitting area and two lower beds that are convertible to one queen-size bed that has Holland America's signature Mariner's Dream bed with plush Euro-Top mattresses. Shower with premium massage shower heads.

Please note:

- All cabins are subject to availability; some cabins may have restricted views.
- Cruise cabins are booked on a guaranteed basis and are assigned by the cruise line prior to departure.

Cruise Arrival and Departure Times:

Please keep in mind that the provided cruise arrival and departure times are an approximate and will be finalised upon receipt of your cruise tickets.

Accommodation

Accommodation Used:

4 Star Properties (Self-Rated)

Vancouver, Canada: Hotel Belmont, Mgallery Collection

3 Star Properties (Self-Rated)

Anchorage, USA: Westmark Hotel & Conference Centre
Denali National Park, USA: Holland America Denali Lodge
Fairbanks, USA: Westmark Fairbanks Hotel and Conference Centre
Dawson City, Canada: Holland America Dawson City Inn

Skagway, USA: Holland America Skagway Inn

Please note: Accommodation/rooms offered are based on a lead-in room type and are subject to availability based on seasonality. In the instance a property is not available, a similar standard of accommodation will be provided. Properties will be confirmed and included in your travel pack, which you will receive 4-6 weeks before travel.

Extra Nights

Not available.

Please note: If you are interested in booking additional nights of accommodation pre or post-tour, please wait until you receive your travel documentation approximately 4-6 weeks before departure for the confirmed list of hotels. If booking your own additional accommodation directly with the hotel, please be aware that you may be required to change rooms at the start/end of your tour.

Maximum Room Capacity

2 people.

Triple Share

Not available.

Bedding Configuration

Twin or double (subject to availability).

Optional Tours/activities

Holland America 'Have it All' Package: \$340 per person (must be purchased for both passengers and not individually)

Please note:

- The optional tours listed above must be purchased on checkout or over the phone before submitting your passenger information form (subject to availability).
- Some tours or shore excursions require minimum numbers to operate.
- Shore excursions can be booked/reserved directly with the cruise line before travel (subject to availability)
- Shore excursions can also be booked whilst onboard (subject to availability).

- Shore excursion programmes and itineraries may vary depending on local conditions and/or any unforeseen events concerning the timing on the day of the tour. Some excursions are very popular, and therefore availability cannot always be guaranteed, it is advisable to book in advance to avoid disappointment.

Exclusions

- Visa fees and requirements
- Domestic transfers and flights not stated in the deal offer
- Meals/beverages not stated in the deal offer
- Optional gratuities/tipping
- Optional activities/tours
- Personal expenses
- Travel insurance
- Any costs associated with an interruption to your tour as a result of an airline schedule change or cancellation
- Mandatory city tax

Please note: Many hotels and resorts in the USA, including Hawaii, charge a daily resort fee. This mandatory fee covers various hotel extras, and must be paid to the hotel upon arrival or check-out. It cannot be prepaid. Further details will be included in your travel documents.

Gratuities / Tipping

Land

Gratuities or tips are not included as part of the Alaska cruisetour fare, except for luggage-handling gratuities for the included hotels. Tipping practices on land differ from those on board the ship. Tipping is strictly up to the individual guest and should be based on the quality of service received.

If you wish to offer your appreciation through gratuity, you may use the following guidelines:

- Transfers: USD \$1 per bag
- Driver Guides: Up to USD \$10 per day for a full day of touring
- Housekeeping: USD \$2 per room, per night
- Food Service: 18-20% of the pre-tax bill

Important Information

- Tour Director: USD \$10 per guest, per day
- Rail Team: Up to USD \$10 per guest, per day
- Excursions: Discretionary gratuities are customary

Please note:

- *Luggage-handling gratuities are included in your cruisetour fare for all hotels included in the itinerary.*
- *Tipping for services provided is always a matter of personal discretion; however, please be aware that many locals consider tipping part of their normal remuneration, and they may approach you for payment; there's no need to be intimidated by the request.*

Cruise

Gratuities (tips) are not included for the cruise staff's services throughout this tour's cruise component. Holland America Line is an internationally registered company & operates to US & European standards, both of which have an economy driven by a tipping culture. Gratuities are expected on your cruise and will be charged to your onboard account at approx USD \$17 per guest per day for non-suite stateroom guests and \$19 per guest per day for suite guests. If you have any questions regarding the gratuities on your cruise, please speak to the guest services staff onboard the ship.

Other Important Information

TOUR GUIDE VS. TOUR LEADER

Tour Guide:

Often locals with intimate knowledge of an area, its culture, and history. Their role entails providing commentary, routing the tour, and seeing that people have a good time. They are a licensed, qualified expert who supplies specific information on the history, art, architecture and culture of the city/village/attraction where they are guiding the tour. The guide meets the group at the required place and leaves it at the end of the tour; they do not travel with the group.

Tour Leader:

An experienced person tasked with ensuring the smooth operation of tours, as well as providing practical support to passengers throughout the whole trip. Their role primarily includes assisting with accommodation, transportation between locations, and communication with tour guides at each stop. A tour leader may provide general guidance around a city or village and offer information on the place visited on the bus. However, they are not required to have specific art, architecture, or historical knowledge. They are not allowed to provide a guided tour or commentary of a city/village/attraction once there and, if caught doing so, can be fined.

Please note: Tour leaders/guides are not a standard inclusion in all travel offers. Tour leaders/guides will only be made available when required to enhance the experience of the destination featured.

CLIMATE & AVERAGE TEMPERATURES

Alaska, USA

During your Alaska adventure, you can expect a wide range of temperatures as the season transitions from spring to peak summer. In May, the weather is crisp and relatively dry; daytime highs in Denali and the Interior typically average around 12°C, while coastal areas hover between 10°C and 13°C, with nights often dipping just below freezing to -1°C. By June, the region warms significantly, with Denali seeing highs of 18°C and the Interior occasionally reaching 20°C or more under nearly 24-hour daylight. August remains pleasantly mild with average highs of 16°C to 18°C, though it is the start of the "rainy season," so expect more frequent showers and cooler nights averaging around 4°C to 7°C.

Vancouver, Canada

Vancouver offers a much milder and more temperate climate than the Alaskan interior, though you should still be prepared for its signature West Coast moisture. In May, the city wakes up with pleasant daily highs around 16°C and lows

of 9°C, making it perfect for walking the Seawall, though you can expect a mix of sun and light showers. June sees a bump in warmth with highs reaching 19°C and more consistent sunshine, though evenings remain cool at about 11°C. August is the city's peak summer month and typically the driest, with comfortable highs of 22°C and overnight lows of 14°C. Unlike the humidity of eastern Canada or the heat of the US south, Vancouver's August weather is famously temperate, rarely feeling "too hot" due to the refreshing Pacific breezes.

Weather

We always suggest referring to an online source for the most up-to-date weather information for your destination/s.

FLIGHTS

Seat Selection & Frequent Flyer Points:

We do not arrange seat selection. It is essential to highlight that some airlines do not allow pre-selected seats. We strongly suggest you contact the airline directly with seating allocation requirements and/or arrive at the airport earlier to arrange your seating. While we do not add frequent flyer member details to bookings, you can do this directly with the airline once you have your flight information.

Dietary Requests:

Meal options and availability differ between airlines and routes therefore not all dietary requests can be accommodated. If your flight includes meals we will select the most suitable option available based on the dietary requirements you have specified. All meal requests are subject to airline approval and are not guaranteed, therefore we recommend preparing for your flight by bringing appropriate food for yourself, as required.

Passport Validity:

Customers must provide valid passport details either at the time of purchase or no later than 90 days before the departure date. Failure to do so may result in the cancellation of the booking. Customers will be responsible for any costs and fees

Important Information

incurred in this instance.

CRUISE

Embarkation / Disembarkation:

- Begins approximately 2 hours after docking.
- Due to security reasons, all guests must be on board 2 hours before sailing.
- Itineraries are subject to change at any time without notice.
- Check your specific sailing for exact departure and arrival times. All times are local to the port.

Cruise Loyalty Discounts:

Please note: Travellers must contact the cruise line directly upon receiving their travel documents in order to request any membership benefits they may be entitled to.

COACH TOUR

Meals:

For meals not included, the tour leader (when available) will offer assistance with reservations, suggestions and directions to local restaurants. It is your responsibility to notify us of any dietary requests/requirements.

Please note: We will do our best to meet your requests/requirements; however, we cannot guarantee that we will always be able to.

Luggage:

You will be responsible for all your personal belongings whilst on tour. You must carry your own luggage from the vehicle to the hotel room and back to the vehicle. The driver will assist with the uploading and unloading of bags from the vehicle.

OTHER

Mobility:

If you require wheelchair access please contact our friendly sales and service team to inquire on your behalf.

Fitness Level Required:

Adventure (and spontaneity) create some of the best travel memories. Bear in mind,

your home schedules and timings might not be adhered to on tour - it's all part of the fun!

A moderate level of fitness will be required. Expect a moderate pace of touring with a focus on guided tours that may include full days with extended activity, guided city tours or nature walks. You will require a general level of fitness for unassisted navigation of stairs and inclines, longer distances with possible periods of standing when visiting sites, walking on sloping, uneven ground or elevations. You will be responsible for your own luggage and have the ability to board all modes of transport without assistance.

Please note: Many areas may be inaccessible to wheelchairs or mobility scooters, where the unassisted use of personal walking sticks and other aids may be required. Although some assistance may be available, every traveller should be self-reliant during all aspects of their travel

Please note: It is expected that every traveller must be self-reliant and able to undertake all aspects of their own travel. Please speak to your booking agent about your personal circumstances and any assistance requirements to ensure this tour is right for you.

Please note: If you have any concerns, please consult your healthcare provider prior to purchase/travel.

Yellow Fever:

A valid international certificate of vaccination against Yellow Fever is required in many countries. You may need to present this on arrival at the airport or border crossing. Some countries will refuse entry if you are unable to present your certificate. It's also common for your home country to request a Yellow Fever certificate upon arrival.

You must check with your doctor well before leaving home about the Yellow Fever requirements for the countries you'll be visiting.

Sightseeing:

Please note: If entry to a site is affected by changes in operating hours or public holiday closures, your itinerary, where possible, may be adjusted, or a similar activity will be offered in its place (subject to availability).

Wildlife sighting:

TripADeal cannot guarantee animal sightings on tour. Wildlife are unpredictable and factors such as weather conditions, predatory fear and animal movements can impact sightings.

Shopping:

Shopping overseas can be a daunting and confusing experience, especially when there is a language barrier. Please be very cautious when foreign currencies and prices are involved. If paying by credit card, please pay close attention to the amount you are being charged and keep all your receipts.

Do not make any purchases you are not comfortable with or feel pressured into. If you are uncertain or need assistance with the language barrier, please seek assistance from your Tour Guide/Leader. Please refer to our [Terms and Conditions](#) regarding shopping for further information.

Visas

Canada

Australian and New Zealand passport holders must apply for an electronic travel authorisation (eTA) before travelling to Canada by air. An Electronic Travel Authorization (eTA) is an entry requirement for visa-exempt foreign nationals travelling to Canada by air. An eTA is electronically linked to a traveller's passport. It is valid for up to five years or until the passport expires, whichever comes first. If you get a new passport, you need to get a new eTA.

United States

If travelling on an Australian passport, an ESTA (Visa Waiver) for the USA is a strict requirement when travelling to or flying through the USA. Once a USA ESTA Visa Waiver is issued it is valid for 2 years or until your passport expires (whichever is sooner) and will allow multiple entries into

Important Information

the USA.

Important:

- *Please start arranging your visa three weeks before departure to account for any delays due to consulate operating hours.*
- *Visa rules are subject to change. Please check with the nearest embassy, consulate or immigration department of the destination/s you are visiting once you receive your travel documentation to ensure you have the most up to date information.*
- *It is your responsibility to be travel-ready and ensure that you are aware and comply with any destination or travel requirements, including the validity of all required travel documents.*
- *Passengers who are not Australian citizens must also check with the respective consulate or visa agency to determine what their visa requirements are and what personal identification is required.*
- *It is also important to note that some areas of employment, such as journalism, government authorities and charity organisations, may have additional restrictions in applying for visas. This may, in turn, affect the type of application required.*

Travel Insurance

Embarking on your next trip is exciting, and while you hope the unexpected does not happen, it is best to be prepared. We strongly recommend you take out travel insurance when making your booking. Whether it's a potential medical emergency, a flight cancellation, a delayed suitcase, or an unforeseen event, it's important to ensure you're adequately protected. For more information or advice visit <https://www.tripadeal.com.au/travel-insurance>

Schedule Of Fees

Voluntary Changes

This includes booking changes requested by you, including but not limited to those changes requiring an airline ticket or a Purchase Confirmation reissue.

- Changes - \$100 per booking and any additional charges applied by the airline/ cruise company/accommodation/other travel providers.

Name Changes Due To Passenger Error

- If the incorrect name has been provided, charges of \$100 per booking and any additional charges applied by the airline/ cruise company/accommodation/other travel providers.

Supplier Fees

In the event the tour package you have purchased is unable to proceed, and/or a Travel Supplier is unable to fulfil the tour due to external circumstances (Limitation of Liability e.g. a Force Majeure event), there may be a fee or amount of money that is withheld by our Suppliers and is unrecoverable. This may be due to non-refundable airline tickets, cancellation penalties with cruise cabins or unrecoverable payments with our land/ accommodation partners. If refunds are not available from Suppliers, we will endeavour to obtain a travel credit on the best terms available and communicate these outcomes to you. In the event we are unable to obtain a refund or travel service credit, or part thereof, this cost is passed on to the customer as a Supplier Fee.