



# Alaska & Denali Wilderness Explorer

CANADA • UNITED STATES • ALASKA

## The Offer

Experience the ultimate Northern Exposure with this adventure to Alaska and Denali National Park: a 14-day journey combining a 7-day Inside Passage cruise with a luxury rail tour. Depart Anchorage on Holland America's McKinley Explorer® train. Take in stunning views from your glass-domed carriage as you travel to Denali National Park. Step onto the open-air platform to soak in crisp mountain air as you view Broad Pass, Hurricane Gulch and with luck, Mount Denali. Stay at the doorstep of Denali National Park for a Tundra Wilderness Tour in search of grizzlies, caribou, moose, wolves and Dall sheep before boarding a 7-night Holland America cruise.

Sail from Whittier for awe-inspiring views of the Hubbard Glacier and the scenic beauty of UNESCO-listed Glacier Bay (subject to departure date). Settle into your cabin aboard the Holland America Westerdam or Nieuw Amsterdam and explore the ship's enticing restaurants and bars, catch a live show at Billboard Onboard, or treat yourself to a rejuvenating session at the Greenhouse Spa & Salon (additional costs may apply).

Savour unforgettable vistas of frosted mountain peaks, watching for breaching Humpback whales, or scanning the shores for Stellar Sealions, moose or bears. Learn about the traditions of the indigenous Tlingit culture, step back in time at Skagway, where the Klondike Gold Rush spirit is preserved in a living museum, and visit the colourful ports of Ketchikan and Juneau en route to your final destination, Vancouver.

This once-in-a-lifetime cruise-tour package includes return international full-service flights, a 7-night Alaska cruise, 2 nights of lodge accommodation & 2 nights of hotel accommodation, 21 meals including all meals while cruising and more.

**Want more? Choose Itinerary 2 to start your holiday with a cruise (the trip runs northbound from Vancouver to Anchorage). Arrive Early & Stay Behind options are also available up to 60 days before and after your trip.**

Offer available for a limited time or until sold out. TRIP A DEAL PTY LTD: 50149240433

Updated: 29 Jan 2026 13:24:35

Have a question about this deal? We're here to help.  
Call our friendly team on 1300 158 912

1

FREQUENT  
FLYER



Trip  
aDeal



## 14-DAY CRUISE & TOUR PACKAGE | ALASKA & DENALI WILDERNESS EXPLORER

### The Itinerary

#### Itinerary 1

##### Day 1 Australia (or New Zealand) - Anchorage, Alaska, USA

Today, depart from Australia (or New Zealand) for Anchorage, Alaska. Upon arrival, meet your driver and transfer to the hotel for check-in.

*Please note: Due to flight scheduling and availability, some departures may occur on Day 0. Affected customers must be available to depart the day before. Flight times will be indicated on your final documents, which will be issued 4-6 weeks before departure.*

**Overnight: Westmark Hotel & Conference Center, or similar, Anchorage**

**Meals included: In-Flight**

##### Day 2 Anchorage - Denali National Park, Alaska, USA

This morning, meet your driver at the hotel for a transfer to the rail depot, where your unforgettable Alaskan adventure begins aboard Holland America's exclusive McKinley Explorer®, a luxurious, two-level glass-domed railcar designed for optimal wilderness viewing. Settle into your assigned, forward-facing seat and relax as the untamed beauty of Alaska unfolds around you.

Travel through the sweeping landscapes of Broad Pass and cross the dramatic Hurricane Gulch, all while an expert guide shares fascinating stories and insights about the region. With luck, you'll catch your first breathtaking glimpse of Mount Denali as it emerges on the horizon. Step onto the open-air platform to soak in the crisp mountain air and panoramic views, or simply unwind as bartenders craft signature cocktails served with a side of

unforgettable scenery (charges apply). During the ride, regionally inspired breakfast and lunch options are available for purchase from the onboard dining car.

Upon arrival, your luggage will be waiting for you at the lodge, allowing for a seamless check-in and a relaxing start to your two-night stay at the doorstep of Denali National Park. Spend your afternoon exploring Denali Square, the heart of the lodge experience, where you can shop, dine, and immerse yourself in the spirit of the park (charges may apply).

The total journey from Anchorage to Denali National Park takes approximately 8-9 hours. Your expected arrival time is 17:15.

**Overnight: Holland America Denali Lodge, Denali National Park area**

**Meals included: None**

##### Day 3 Tundra Wilderness Tour - Denali National Park, Alaska, USA

Alaska's Denali National Park is where beauty is untamed and majestic animals roam their wide-open habitat as they have for millennia.

Today you will experience this up close on a Tundra Wilderness Tour and travel deep into the heart of Denali for the adventure of a lifetime. This comfortable, comprehensive and fully narrated, 5-6 hour excursion takes you approximately 70 kilometres into the Park's unspoiled wilderness, for up-close views of Mount Denali. It offers your best chance to see Alaska's marquee animals, grizzlies, caribou, Dall sheep, moose and wolves, in a setting of incomparable grandeur.

Offer available for a limited time or until sold out. TRIP A DEAL PTY LTD: 50149240433

Updated: 29 Jan 2026 13:24:35

Have a question about this deal? We're here to help.  
Call our friendly team on 1300 158 912





## 14-DAY CRUISE & TOUR PACKAGE | ALASKA & DENALI WILDERNESS EXPLORER

### The Itinerary

#### Itinerary 1

The Tundra Wilderness Tour is designed to provide a comfortable way to explore Denali. It includes narration provided by a knowledgeable driver/guide and features large screens so you won't miss a thing. A light snack is provided and a box lunch is available to purchase.

**Overnight:** Holland America Denali Lodge, Denali National Park area

**Meals included:** None

#### Day 4 Denali National Park - Whittier, Alaska, USA - Begin 7-night Alaska cruise

**Depart:** 19:30

This morning, you will begin your journey from Denali National Park to Whittier, Alaska, where you will embark on your voyage to Canada. Enjoy some of Alaska's most spectacular scenery via deluxe motorcoach direct to your ship for embarkation. The journey takes approximately 7.5 hours and includes a stop for lunch.

Once onboard the ship, enjoy the rest of the evening at leisure as you set sail on the next leg of your Alaskan Adventure.

*Please note: The following cruise itinerary makes suggestions for activities visitors can enjoy during leisure time in each port. Additional charges may apply. Cruise arrival or departure times may vary depending on departure date selected.*

**Overnight:** Holland America's Westerdam or Nieuw Amsterdam  
**Meals included:** Lunch; Dinner

#### Day 5 Hubbard Glacier, Alaska, USA (Scenic Cruising)

Enjoy a leisurely day onboard, highlighted by afternoon scenic cruising to Hubbard Glacier - North America's longest tidewater glacier.

Cruising toward Hubbard Glacier feels like you're approaching another planet in a tiny spacecraft. It is that big and that otherworldly. Among all the vanishing Alaska glaciers, Hubbard has a rapidly advancing ice margin, up to seven feet in one day, earning it the nickname, "the Galloping Glacier." Hubbard Glacier's three-story icebergs cannon into crystal waters in a process called calving. On clear days, Hubbard turns a stunning deep blue, and on cloudy ones, its many ripples and icebergs shimmer in soft light.

This glacier dwarfs the other glaciers in Alaska. It is the longest tidewater glacier in North America and starts 122 kilometres back, pouring down off the shoulder of Mount Walsh. Its impressive terminal face is 11 kilometres long and 106 metres above the water line, making its regular audience of Alaska cruise ships look like toy boats. Hubbard Glacier is one of the few Alaska glaciers that's advancing and not succumbing to climate change. It sounds uplifting, however many believe the expanding glacier will block the entrance to the fjord.

**Overnight:** Holland America's Westerdam or Nieuw Amsterdam  
**Meals included:** Breakfast; Lunch; Dinner





## 14-DAY CRUISE & TOUR PACKAGE | ALASKA & DENALI WILDERNESS EXPLORER

### The Itinerary

#### Itinerary 1

##### Day 6 Glacier Bay, Alaska, USA (Scenic Cruising)\*

Close your eyes and take in the sounds of “living” ice, the shrill cries of soaring eagles and the splash of a breaching humpback whale. Look out for frosted peaks towering over mossy forests, wide tidewater glaciers and marine wildlife in Glacier Bay. Local experts will come aboard for an enriching experience. As a proud Authorised Concessioner for Glacier Bay National Park, Holland America Line partners with rangers and local Huna Tlingit guides who provide expert insight into this diverse ecosystem and millennia-old culture. You'll leave Glacier Bay with a shorter bucket list and a deeper appreciation of this 3.3 million-acre UNESCO World Heritage Site.

Prepare for inclement weather, even in summer, and dress for rain. Pack a hat, gloves, wool or fleece layers, a warm coat and waterproof gear to comfortably admire the landscape from the open deck of your ship. With fjords, inlets, rivers and streams galore, it's also recommended to bring binoculars.

*Please note: Route and timing are subject to weather and ice conditions.*

*\*Itinerary Alteration (3rd of September 2026 departure)*

*Please note: On the 3rd of September 2026 departure, your ship will visit Endicott Arm & Dawes Glacier for scenic cruising (instead of Glacier Bay).*

**Overnight: Holland America's Westerdam or Nieuw Amsterdam**  
**Meals included: Breakfast; Lunch; Dinner**

##### Day 7 Skagway, Alaska, USA

**Arrive: 07:00 - Depart: 21:00**

At the height of the Klondike Gold Rush, Skagway served as the primary gateway to the legendary gold fields and quickly grew into Alaska's largest settlement. It was then a raucous frontier hub packed with trading posts, saloons and guesthouses. As the gold rush faded into the 1900s, so did Skagway. However, today it's been reinvigorated as a gateway for those looking to explore Alaska's colourful history, pristine wildlife and unrivalled natural beauty.

Much of the town has been preserved as part of the Klondike Gold Rush National Historical Park with rangers offering walking tours around the historic district. At every turn, you'll find yourself immersed in gold rush lore. You can't miss the infamous Red Onion Saloon that still keeps a pistol from Wyatt Earp, the White Pass & Yukon Route Railroad that traverses rugged mountains and more. Skagway is also known for its vibrant local community that's home to local galleries, curio shops and restaurants serving seafood from nearby waters.

**Overnight: Holland America's Westerdam or Nieuw Amsterdam**  
**Meals included: Breakfast; Lunch; Dinner**





## 14-DAY CRUISE & TOUR PACKAGE | ALASKA & DENALI WILDERNESS EXPLORER

### The Itinerary

#### Itinerary 1

##### Day 8 Juneau, Alaska, USA

Arrive: 08:00 - Depart: 18:00

Cruise to Juneau to visit the most remote, beautiful, and strangest state capital in the United States. The sleepy, misty city of around 32,000 has a frontier town atmosphere but welcomes more than a million visitors each summer to its natural attractions. Surrounded by water, forest and mountains, visitors can hike a glacier, eat fresh-caught fish on a seaside patio and tour a grand capitol building all in one day (optional shore excursions).

The real highlight of visiting Juneau is tracking down wildlife. Hike up Mount Roberts to chance upon wild deer and bald eagles, or head north to Auke Bay for a whale-watching tour (not included). If you prefer land mammals, catch a floatplane to nearby Chichagof or Admiralty Island wildlife reserves to spy bears lolling around (optional shore excursions).

**Overnight: Holland America's Westerdam or Nieuw Amsterdam**  
**Meals included: Breakfast; Lunch; Dinner**

##### Day 9 Ketchikan, Alaska, USA

Arrive: 11:00 - Depart: 19:00

Cruise to Ketchikan, named Alaska's first city because it's the first major landfall for most cruisers as they enter the picturesque fjords of the Inside Passage. The town clings to the banks of the Tongass Narrows and is flanked by green forests that are nurtured by abundant rain.

Ketchikan has long been an important hub of the salmon fishing and packing industries. Try your luck on sport fishing or simply savour the fresh seafood at one of the local restaurants (charges apply). Ketchikan is also one of the best spots along the Inside Passage to explore the rich cultural sights of Native Alaskan nations like the Tlingit, Haida and Tsimshian. You can see intricately carved totem poles at the Totem Heritage Center and Totem Bight State Park. The attractions of Saxman Village, just outside of Ketchikan, offer the chance to see Tlingit culture in action with working carvers and a dance show in the clan house (charges apply).

**Overnight: Holland America's Westerdam or Nieuw Amsterdam**  
**Meals included: Breakfast; Lunch; Dinner**

##### Day 10 Inside Passage (Scenic Cruising)

Alaska's Inside Passage is a protected network of waterways that wind through glacier-cut fjords and lush temperate rain forests along the rugged coast of Southeast Alaska. Arguably one of the greatest cruising routes in the world, the Inside Passage stretches through stunning landscapes, from Misty Fjords National Monument to the famed Glacier Bay National Park and Preserve.

Sailing the Inside Passage offers opportunities to spot some of Alaska's most iconic wildlife. Look out for humpback whales and orcas plying the bountiful waters alongside the ships, bald eagles soaring overhead and brown bears lumbering on the shoreline.

**Overnight: Holland America's Westerdam or Nieuw Amsterdam**  
**Meals included: Breakfast; Lunch; Dinner**

Offer available for a limited time or until sold out. TRIP A DEAL PTY LTD: 50149240433

Updated: 29 Jan 2026 13:24:35

Have a question about this deal? We're here to help.  
Call our friendly team on 1300 158 912



## 14-DAY CRUISE & TOUR PACKAGE | ALASKA & DENALI WILDERNESS EXPLORER

### The Itinerary

#### Itinerary 1

##### Day 11 Disembark Cruise - Vancouver, Canada

Arrive: 07:00

Enjoy your final breakfast onboard as your ship docks in Vancouver. Disembark and make your own way to your centrally-located hotel, then enjoy the rest of your day at leisure.

Vancouver offers the perfect combination of urban meets nature. Enjoy picturesque views of the mountains while exploring the city's local hot spots like Stanley Park, Granville Island, Gastown and more at your own pace. Why not sample the best of the local culinary and cocktail scene (not included) for something truly unique during your leisure time in Vancouver.

**Overnight: Hotel Belmont Vancouver - MGallery Collection, or similar, Vancouver**

**Meals included: Breakfast**

##### Day 12 Vancouver, Canada - Australia (or New Zealand)

At the appropriate time, make your own way to the airport for your flight home.

**Meals included: In-Flight**

##### Day 13 In Transit

##### Day 14 Arrive in Australia (or New Zealand)

Offer available for a limited time or until sold out. TRIP A DEAL PTY LTD: 50149240433

Updated: 29 Jan 2026 13:24:35

Have a question about this deal? We're here to help.  
Call our friendly team on 1300 158 912

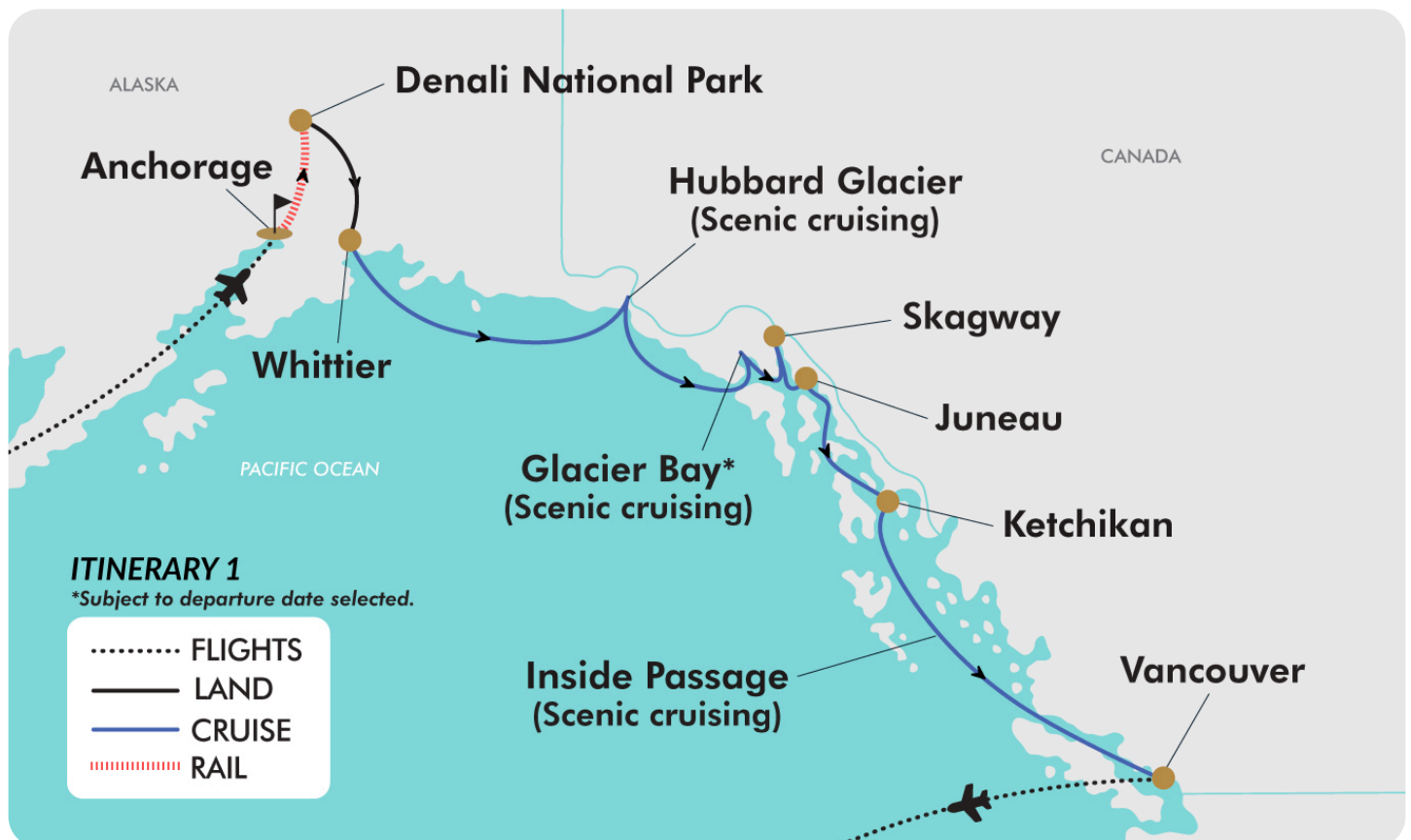




## 14-DAY CRUISE & TOUR PACKAGE | ALASKA & DENALI WILDERNESS EXPLORER

### The Map

#### Itinerary 1



Offer available for a limited time or until sold out. TRIP A DEAL PTY LTD: 50149240433

Updated: 29 Jan 2026 13:24:35

Have a question about this deal? We're here to help.  
Call our friendly team on 1300 158 912





## 14-DAY CRUISE & TOUR PACKAGE | ALASKA & DENALI WILDERNESS EXPLORER

### The Itinerary

#### Itinerary 2

##### Day 1 Australia (or New Zealand) - Vancouver, Canada

Today, depart from Australia (or New Zealand) for Vancouver, Canada. Upon arrival, make your own way to the hotel for check-in and enjoy the rest of your day at leisure.

Vancouver offers the perfect combination of urban meets nature. Enjoy picturesque views of the mountains while exploring the city's local hot spots like Stanley Park, Granville Island, Gastown and more at your own pace. Why not sample the best of the local culinary and cocktail scene (not included) for something truly unique during your leisure time in Vancouver.

*Please note: Luggage storage at the hotel will be available for travellers arriving before check-in time (charges may apply).*

**Overnight:** Hotel Belmont Vancouver - MGallery Collection, or similar, Vancouver

**Meals included:** In-Flight

##### Day 2 Vancouver, Canada - Begin 7-night Alaska cruise

**Depart:** 16:00

Today, make your own way to the Vancouver cruise port terminal for your 7-night Alaska cruise. Sail from Vancouver, glide under the Lion's Gate Bridge, and enter the scenic wonders of the Inside Passage.

**Overnight:** Holland America's Westerdam or Nieuw Amsterdam

**Meals included:** Dinner

##### Day 3 Inside Passage (Scenic Cruising)

Alaska's Inside Passage is a protected network of waterways that wind through glacier-cut fjords and lush temperate rain forests along the rugged coast of Southeast Alaska. Arguably one of the greatest cruising routes in the world, the Inside Passage stretches through stunning landscapes, from Misty Fjords National Monument to the famed Glacier Bay National Park and Preserve.

Sailing the Inside Passage offers opportunities to spot some of Alaska's most iconic wildlife. Look out for humpback whales and orcas plying the bountiful waters alongside the ships, bald eagles soaring overhead and brown bears lumbering on the shoreline.

**Overnight:** Holland America's Westerdam or Nieuw Amsterdam  
**Meals included:** Breakfast; Lunch; Dinner

##### Day 4 Ketchikan, Alaska, USA

**Arrive:** 06:30 - **Depart:** 15:00

Cruise to Ketchikan, named Alaska's first city because it's the first major landfall for most cruisers as they enter the picturesque fjords of the Inside Passage. The town clings to the banks of the Tongass Narrows and is flanked by green forests that are nurtured by abundant rain.

Ketchikan has long been an important hub of the salmon fishing and packing industries. Try your luck on sport fishing or simply savour the fresh seafood at one of the local restaurants (charges apply). Ketchikan is also one of the best spots along the Inside Passage to explore the rich cultural sights of Native Alaskan nations like the Tlingit, Haida and Tsimshian. You can see intricately carved totem poles at the Totem Heritage Center and







## 14-DAY CRUISE & TOUR PACKAGE | ALASKA & DENALI WILDERNESS EXPLORER

### The Itinerary

#### Itinerary 2

Totem Bight State Park. The attractions of Saxman Village, just outside of Ketchikan, offer the chance to see Tlingit culture in action with working carvers and a dance show in the clan house (charges apply).

**Overnight: Holland America's Westerdam or Nieuw Amsterdam**  
**Meals included: Breakfast; Lunch; Dinner**

#### Day 5 Juneau, Alaska, USA

**Arrive: 10:00 - Depart: 21:00**

Cruise to Juneau to visit the most remote, beautiful, and strangest state capital in the United States. The sleepy, misty city of around 32,000 has a frontier town atmosphere but welcomes more than a million visitors each summer to its natural attractions. Surrounded by water, forest and mountains, visitors can hike a glacier, eat fresh-caught fish on a seaside patio and tour a grand capitol building all in one day (optional shore excursions).

The real highlight of visiting Juneau is tracking down wildlife. Hike up Mount Roberts to chance upon wild deer and bald eagles, or head north to Auke Bay for a whale-watching tour (not included). If you prefer land mammals, catch a floatplane to nearby Chichagof or Admiralty Island wildlife reserves to spy bears lolling around (optional shore excursions).

*Please note: Cruise arrival or departure times may vary depending on departure date selected.*

**Overnight: Holland America's Westerdam or Nieuw Amsterdam**  
**Meals included: Breakfast; Lunch; Dinner**

#### Day 6 Skagway, Alaska, USA

**Arrive: 05:30 - Depart: 21:00**

At the height of the Klondike Gold Rush, Skagway served as the primary gateway to the legendary gold fields and quickly grew into Alaska's largest settlement. It was then a raucous frontier hub packed with trading posts, saloons and guesthouses. As the gold rush faded into the 1900s, so did Skagway. However, today it's been reinvigorated as a gateway for those looking to explore Alaska's colourful history, pristine wildlife and unrivalled natural beauty.

Much of the town has been preserved as part of the Klondike Gold Rush National Historical Park with rangers offering walking tours around the historic district. At every turn, you'll find yourself immersed in gold rush lore. You can't miss the infamous Red Onion Saloon that still keeps a pistol from Wyatt Earp, the White Pass & Yukon Route Railroad that traverses rugged mountains and more. Skagway is also known for its vibrant local community that's home to local galleries, curio shops and restaurants serving seafood from nearby waters.

*Please note: Cruise arrival or departure times may vary depending on departure date selected.*

**Overnight: Holland America's Westerdam or Nieuw Amsterdam**  
**Meals included: Breakfast; Lunch; Dinner**





## 14-DAY CRUISE & TOUR PACKAGE | ALASKA & DENALI WILDERNESS EXPLORER

### The Itinerary

#### Itinerary 2

##### Day 7 Glacier Bay, Alaska, USA (Scenic Cruising)\*

Close your eyes and take in the sounds of “living” ice, the shrill cries of soaring eagles and the splash of a breaching humpback whale. Look out for frosted peaks towering over mossy forests, wide tidewater glaciers and marine wildlife in Glacier Bay. Local experts will come aboard for an enriching experience. As a proud Authorised Concessioner for Glacier Bay National Park, Holland America Line partners with rangers and local Huna Tlingit guides who provide expert insight into this diverse ecosystem and millennia-old culture. You'll leave Glacier Bay with a shorter bucket list and a deeper appreciation of this 3.3 million-acre UNESCO World Heritage Site.

Prepare for inclement weather, even in summer, and dress for rain. Pack a hat, gloves, wool or fleece layers, a warm coat and waterproof gear to comfortably admire the landscape from the open deck of your ship. With fjords, inlets, rivers and streams galore, it's also recommended to bring binoculars.

*Please note: Route and timing are subject to weather and ice conditions.*

*\*Itinerary Alteration (15th of May 2027 departure)*

*Please note: On the 15th of May 2027 departure, your ship will visit Icy Strait Point (instead of Glacier Bay).*

**Overnight:** Holland America's Westerdam or Nieuw Amsterdam  
**Meals included:** Breakfast; Lunch; Dinner

##### Day 8 College Fjord, Alaska, USA (Scenic Cruising)

Enjoy a leisurely day highlighted by evening cruising through picturesque College Fjord.

See majestic, centuries-old rivers of ice cascading from the mountains to the sea. Glaciers have shaped many Alaska lakes, rivers and valleys one slow centimetre at a time. They've fascinated scientists and inspired artists for a long time. Scenic cruising College Fjord brings you close to many glaciers, there's even a spot where you can see eight at once! Your chances of watching ice thunder into the water is high, as the Prince William Sound is one of the most active areas for calving.

Of all Alaska fjords, College Fjord is the most storied. The Harriman Expedition of 1899 with John Muir and other notable scientists traversed the College Fjord aboard the George W. Elder, funded by Ivy League colleges. All of the glaciers were named for various schools. As you travel into College Fjord, the glaciers on the left are named for women's colleges and those on the right are named for men's colleges. The names are Amherst, Barnard, Bryn Mawr, Harvard, Smith, Vassar and Yale. Harvard Glacier is the biggest, with its face covering approximately two and a half kilometres across.

**Overnight:** Holland America's Westerdam or Nieuw Amsterdam  
**Meals included:** Breakfast; Lunch; Dinner

Offer available for a limited time or until sold out. TRIP A DEAL PTY LTD: 50149240433

Updated: 29 Jan 2026 13:24:35

Have a question about this deal? We're here to help.  
Call our friendly team on 1300 158 912





## 14-DAY CRUISE & TOUR PACKAGE | ALASKA & DENALI WILDERNESS EXPLORER

# The Itinerary

## Itinerary 2

### Day 9 Whittier, Alaska, USA - Disembark Cruise - Denali National Park

This morning, disembark in Whittier to begin your journey to Denali National Park, Alaska, and enjoy a two-night stay at the doorstep of this majestic national treasure. Enjoy some of Alaska's most spectacular scenery via deluxe motor coach directly to the lodge at the doorstep of Denali National Park. The journey takes approximately 7.5 hours and includes a stop for lunch.

Upon arrival, your luggage will be transferred to your room at the lodge, allowing for a seamless check-in and a relaxing start to your two-night stay at the doorstep of Denali National Park.

Spend your afternoon exploring Denali Square, the heart of the lodge experience, where you can shop, dine, and immerse yourself in the spirit of the park (charges may apply).

**Overnight: Holland America Denali Lodge, Denali National Park area**

**Meals included: Breakfast; Lunch**

### Day 10 Denali National Park, Alaska, USA

Alaska's Denali National Park is where beauty is untamed and majestic animals roam their wide-open habitat as they have for millennia.

Today you will experience this up close on a Tundra Wilderness Tour and travel deep into the heart of Denali for the adventure of a lifetime. This comfortable, comprehensive and fully narrated, 5-6 hour excursion takes you approximately 70 kilometres into the Park's unspoiled wilderness, for up-close views of Mount

Denali. It offers your best chance to see Alaska's marquee animals, grizzlies, caribou, Dall sheep, moose and wolves, in a setting of incomparable grandeur.

The Tundra Wilderness Tour is designed to provide a comfortable way to explore Denali. It includes narration provided by a knowledgeable driver/guide and features large screens so you won't miss a thing. A light snack is provided and a box lunch is available to purchase.

**Overnight: Holland America Denali Lodge, Denali National Park area**

**Meals included: None**

### Day 11 Denali National Park - Anchorage, Alaska, USA

This morning, begin your unforgettable Alaskan adventure aboard Holland America's exclusive McKinley Explorer®, a luxurious, two-level glass-domed railcar designed for optimal wilderness viewing. Settle into your assigned, forward-facing seat and relax as the untamed beauty of Alaska unfolds around you.

Travel through the sweeping landscapes of Broad Pass and cross the dramatic Hurricane Gulch, all while an expert guide shares fascinating stories and insights about the region. Step onto the open-air platform to soak in the crisp mountain air and panoramic views, or simply unwind as bartenders craft signature cocktails served with a side of unforgettable scenery (charges apply). During the ride, regionally inspired breakfast and lunch options are available for purchase from the onboard dining car.

Offer available for a limited time or until sold out. TRIP A DEAL PTY LTD: 50149240433

Updated: 29 Jan 2026 13:24:35

Have a question about this deal? We're here to help.  
Call our friendly team on 1300 158 912







## 14-DAY CRUISE & TOUR PACKAGE | ALASKA & DENALI WILDERNESS EXPLORER

### The Itinerary

#### Itinerary 2

Upon arrival at the rail depot in Anchorage, you will be met by your driver and transferred to your hotel for the evening. Once checked in, enjoy the rest of your evening at leisure.

The total journey from Denali National Park to Anchorage takes approximately 8-9 hours. You're expected arrival time is 17:45.

**Overnight: Westmark Hotel & Conference Center, or similar, Anchorage**

**Meals included: None**

#### Day 12 Anchorage, Alaska, USA - Australia (or New Zealand)

At the appropriate time, be transferred to the airport for your flight home.

**Meals included: In-Flight**

#### Day 13 In Transit

#### Day 14 Arrive in Australia (or New Zealand)

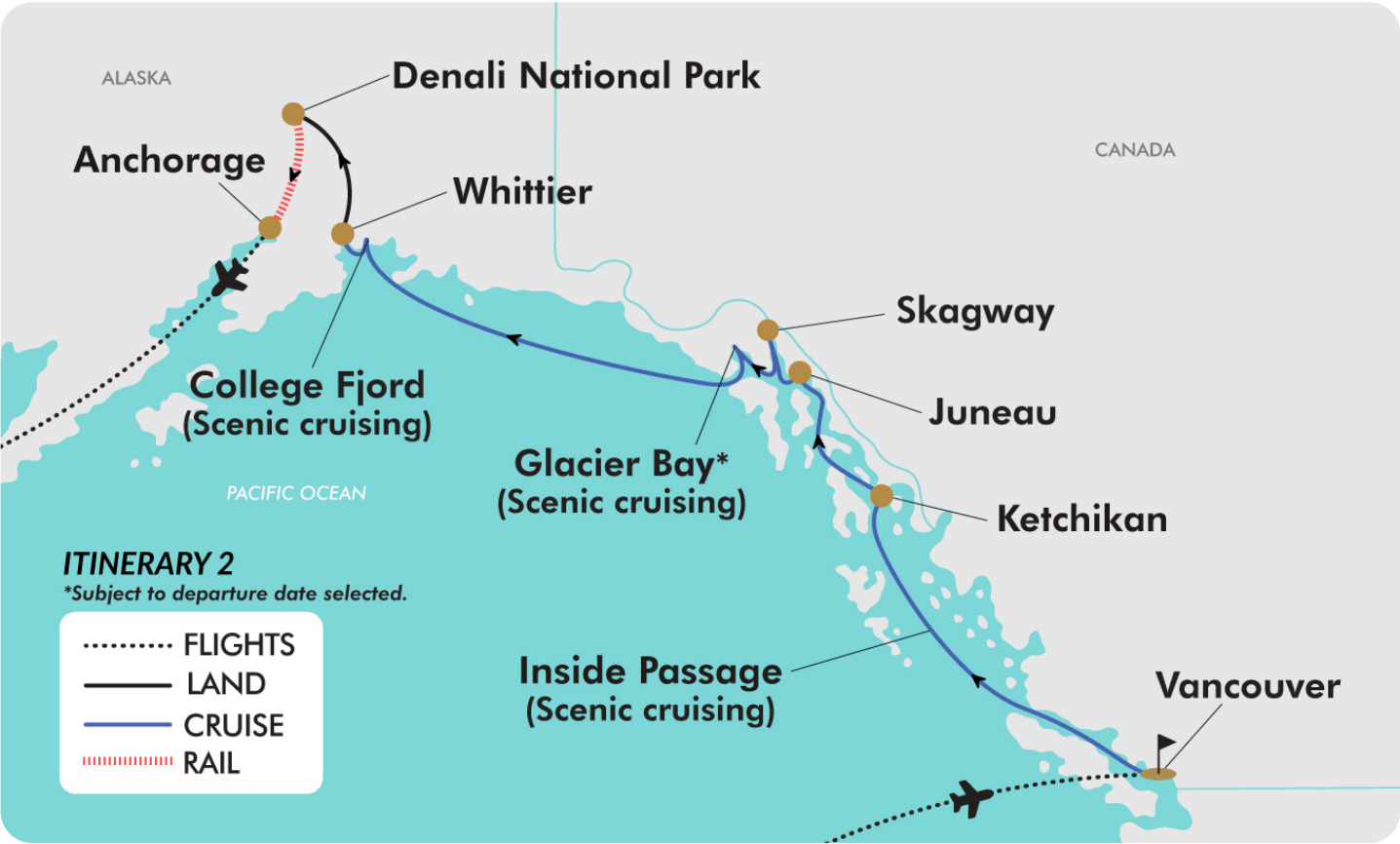




14-DAY CRUISE & TOUR PACKAGE | ALASKA & DENALI WILDERNESS EXPLORER

The Map

Itinerary 2



Offer available for a limited time or until sold out. TRIP A DEAL PTY LTD: 50149240433

Updated: 29 Jan 2026 13:24:35





14-DAY CRUISE & TOUR PACKAGE | ALASKA & DENALI WILDERNESS EXPLORER

Tour Inclusions

HIGHLIGHTS

Discover the rugged beauty of Alaska on this once-in-a-lifetime cruise & land adventure

Marvel at untamed nature, from towering peaks and thundering glaciers to wildlife-rich forests & waterways

Traverse Alaska's spectacular wilderness aboard Holland America's luxury glass-domed McKinley Explorer® railcar

Spend two unforgettable nights at the doorstep of Denali National Park, home to breathtaking landscapes & iconic wildlife

Embark on a guided Tundra Wilderness Tour in search of grizzlies, moose, Dall sheep & more

Cruise for 7 nights with Holland America Line through Alaska's legendary Inside Passage

Witness the awe-inspiring Hubbard Glacier, North America's longest tidewater glacier (Itinerary 1)

Cruise through the stunning UNESCO-listed Glacier Bay National Park\*

Learn from local rangers & Huna Tlingit guides while cruising Glacier Bay\*

Explore Skagway, a gold rush-era town steeped in frontier history & charm

Visit Juneau, America's most remote capital

Discover Ketchikan, rich in Native Alaskan culture, famous for its totem poles & seafood

Enjoy time at leisure in Vancouver, where urban sophistication meets mountain & ocean views

Cruise through Alaska's historic College Fjord, viewing up to eight majestic glaciers at once (Itinerary 2)

\*Glacier Bay National Park is subject to departure date selected.

FLIGHTS

Return international full-service flights (economy class), surcharges may apply

CRUISE

7-night Alaska Inside Passage cruise

Sail aboard Holland America's Westerdam or Nieuw Amsterdam

HAVE IT ALL CRUISE UPGRADE

Upgrade your cruise with Holland America's Have It All™ premium package for just \$85 per person, per night when you pre-book. Secure exceptional value and enjoy the below additional inclusions while cruising:

\$100 USD shore excursion credit

Signature beverage package with a selection of wine, beer, spirits, cocktails and more

1-night of specialty dining at an award-winning restaurant

Wi-Fi surf package

Please note: See the Important Information for full details.

RAIL

Journey aboard Holland America's exclusive McKinley Explorer®

Ride a luxurious, two-level glass-domed railcar, to or from Denali National Park (direction per itinerary selected)

ACCOMMODATION

2 nights of accommodation at Holland America's exclusive Denali Lodge

Overnight quality accommodation in Anchorage, Alaska

Overnight 4-star accommodation in Vancouver, Canada





14-DAY CRUISE & TOUR PACKAGE | ALASKA & DENALI WILDERNESS EXPLORER

Tour Inclusions

DINING

21 meals, including all while cruising

ESSENTIALS

- English-speaking guides
- Airline taxes & surcharges
- Cruise port taxes & surcharges

TRANSPORT

- Transportation by luxury rail on board Holland America's private McKinley Explorer®
- Transportation by deluxe air-conditioned coach between Denali National Park and Whittier Cruise Terminal

TRANSFERS

- Itinerary 1:
  - Day 1: Anchorage airport to hotel
  - Day 2: Anchorage hotel to rail depot
- Itinerary 2:
  - Day 11: Anchorage rail depot to hotel
  - Day 12: Anchorage hotel to airport



# Important Information

*\*Please note: All information provided in this brochure is subject to both change and availability. Prior to purchase please check the current deal for up-to-date information. If you have already purchased this deal, the terms and conditions on your Purchase Confirmation apply and take precedence over the information in this brochure.*

## Booking Information

After purchase, you will receive a receipt and a Purchase Confirmation, directing you to an online Passenger Information Form. You must complete the Passenger Information Form within 72 hours of purchase.

Any special requests, preferences and optional extras MUST be clearly stated in your Passenger Information Form. Any change requested after submitting your Passenger Information Form cannot be guaranteed, is strictly subject to availability and will incur surcharges as outlined in the Schedule of Fees below.

*Please note: All countries and territories have different entry requirements in relation to vaccinations, quarantine/isolation periods and travel restrictions. Due to the evolving nature, we would ask all of our customers to monitor, meet and adhere to the specific requirements of their intended destination(s) in the lead-up to and immediately before travel, as well as any requirements post-travel upon their return.*

## Our Policies

### Cancellation and Refund Policy

By placing a booking with us, you acknowledge the following important information:

- **we act as your booking agent;** TripADeal is a booking services provider, and curates the Travel Offers available on our website. We act as your booking agent, and we receive payment for the Booking Services as part of the booking price, however, we do not provide any of the Travel Services (flights, accommodation, tours or other products or services) included in your booking – the Travel Services are provided by a number of third party Travel Suppliers.

- **each booking is unique;** our Travel Offers are made up of a variety of different components and are, during the booking process, uniquely tailored to suit your requirements, for example, departure dates and ports, flight and room upgrades, tour inclusions, etc.

- **changes/modifications to your booking may not be possible;** once your booking has been made, changes or modifications may not be possible, and where possible, may incur a fee. It is important to ensure that the information you provide during the booking process is accurate and up to date, and that you read the Travel Offer carefully before placing your order.

- **Travel Offers are a package;** our Travel Offers have been curated into package offerings and must be used as a package – individual components cannot be used independently of the full package offering.

- **our Travel Offers are generally non-refundable;** in order to provide great value Travel Offers, we work with a variety of Travel Suppliers to find the best deals – this often means the Travel Suppliers' offerings are non-refundable to ensure the best price. We recommend that you obtain travel insurance as soon as you make a booking with us.

To read more about our Cancellation and Refund Policy, please [click here](#).

### General Terms and Conditions

By placing your booking with us, you acknowledge and agree to our [Terms & Conditions](#), [Privacy Policy](#) and [Cancellation Policy](#).

## Offer Essentials

This Travel Offer is valid for travel on selected dates until the 9th September 2027.

This Travel Offer is priced per person based on a twin share.

### Departure Dates & Surcharges

See checkout for live dates and availability.

### Single Traveller Supplement

For solo travellers, a mandatory single supplement applies:

Inside Stateroom: \$2,950

Ocean View Stateroom (Obstructed): \$3,150

Ocean View Stateroom (Unobstructed): \$3,250

Verandah Stateroom (Unobstructed): \$3,650

*Please note: Accommodation for single customers who are travelling on a tour or cruise package may be in a single room, depending on availability.*

### Age Policy

Holland America requires at least one traveller in each cabin to be over the age of 21.

### Child Policy

- No child discounts are offered. The full price applies to all children travelling with their parents.
- Valid for children 1 years old and over.

*Please note: Children must be accompanied by a responsible adult 21 years old and over to travel. No unaccompanied minors are allowed.*

## Flights

### Departure Cities

Sydney, \*Melbourne, Brisbane, \*Adelaide, \*Perth, Auckland

### Departure City Surcharges

Melbourne: \$100 per person

Adelaide: \$300 per person

Perth: \$700 per person

### International Flight(s)

Full-service airline(s) used

- Cabin Class: Economy Class

*Please note: We cannot accommodate one-way flights. Travellers must take all included flights within the package, and any flights intentionally forfeited will result in later flights being subject to cancellation.*

*Please note: From Australia / New Zealand, the flying journey to your destination may take up to 34 hours, with up to 3 stops. One*



# Important Information

*of those stops may be within Australia. This is provided as a guide only - actual flight duration can vary depending on availability and airline schedules. Your booking's final details will be confirmed to you via email once available.*

## Preferred Airline Surcharge

- Cabin Class: Economy Class
- Air Canada: \$300 per person

### Please note:

- *Preferred airlines are subject to availability. If we are unable to fulfil your request, the above extra cost will be refunded.*
- *On any upgrade purchase, short-haul flights and domestic flight sectors are not guaranteed.*
- *In the event that a purchased stopover package and a purchased preferred airline upgrade are not compatible, you will have the option to receive a refund for the preferred airline upgrade or be offered an alternative stopover city option, e.g if you choose to fly with Singapore Airlines you cannot stopover in Dubai.*
- *Preferred airline refers to the marketing carrier and could include codeshare partners.*

## Arrive Early and Stay Behind Options

Fly out and return home up to 60 days pre and post your tour dates.

### Arrive Early

Anchorage, USA (Itinerary 1 Only) - From \$360 per person, subject to availability.

Vancouver, Canada (Itinerary 2 Only) - From \$360 per person, subject to availability.

San Francisco, USA - From \$480 per person, subject to availability.

Los Angeles, USA - From \$480 per person, subject to availability.

### Stay Behind

Vancouver, Canada (Itinerary 1 Only) - From \$360 per person, subject to availability.

Anchorage, USA (Itinerary 2 Only) - From \$360 per person, subject to availability.

San Francisco, USA - From \$480 per

person, subject to availability.

Los Angeles, USA - From \$480 per person, subject to availability.

### Please note:

This option incurs a fee for adjusting the departure or return dates. This fee does not include extra nights' accommodation, meals and/or airport transfers, which will be at your own cost.

In addition, airport transfers listed as an inclusion on the Travel Offer are considered void in the event that you select an Arrive Early/Stay Behind option. As such, you will need to arrange your own transfers at your cost.

We strongly advise against booking any pre or post-tour travel arrangements/accommodation until TripADeal confirms your flight details. If you choose to book before confirmation, we recommend opting for refundable reservations or having backup plans in case the tour does not proceed.

## Internal Flights:

If you select to Arrive Early or Stay Behind into a city other than the one where the tour begins or concludes (where applicable), the package will include an internal flight to your destination. This offer applies only to the cities listed in our Arrive Early & Stay Behind Options. If you wish to forfeit this flight, please advise our friendly team at the time of purchase. Please note that the package's cost does not change when you choose to forfeit your connecting flight.

*Please note: If you request to fly into cities not listed in our "Arrive Early & Stay Behind Options", we may be able to customise your itinerary. If possible, the flight's cost will be charged as an extra.*

## Cancellations & Changes:

Flight booking changes or cancellations after air tickets have been issued are not guaranteed and may incur additional fees and fare difference, subject to the airline cancellation and change policies. Flight changes are subject to availability at the time of booking.

## High-Season:

A high-season Arrive Early or Stay Behind can be purchased for an additional charge, subject to availability. For pricing, please refer to the cart.

## + 60 days:

You can fly out up to 60 days before your package's start date, and/or return home 60 days after your package's end date. Should you wish to fly out or return home for more than 60 days from the tour, please contact us to request availability. Additional costs may apply.

## Estimated dates:

Your estimated departure, return, and arrival dates are all subject to availability and may vary. The confirmed schedule for all flights will be provided when you receive your flight tickets.

High season surcharges apply to flights departing between the below date ranges:

- 5th January 2026 - 31st January 2026
- 3rd April 2026 - 20th April 2026
- 26th June 2026 - 17th July 2026
- 18th September 2026 - 9th October 2026
- 12th December 2026 - 18th December 2026
- 19th December 2026 - 3rd January 2027
- 4th January 2027 - 26th January 2027
- 19th March 2027 - 28th April 2027
- 19th June 2027 - 18th July 2027
- 11th September 2027 - 10th October 2027
- 10th December 2027 - 19th December 2027
- 20th December 2027 - 3rd January 2028
- 4th January 2028 - 31st January 2028
- 1st April 2028 - 30th April 2028
- 1st July 2028 - 23rd July 2028
- 16th September 2028 - 15th October 2028
- 9th December 2028 - 19th December 2028
- 20th December 2028 - 3rd January 2029

## Stopover Packages

Not available.

## Flight Class Upgrades

Business or Premium Economy Class: For pricing, please refer to the payment cart at checkout.



# Important Information

## Please note:

- *Flight upgrades are subject to availability and pricing changes (if we cannot fulfil your request, the upgrade cost will be refunded).*
- *On any upgrade purchase, short-haul flights and domestic flight sectors are not guaranteed.*

## Outbound Flights

*Please note: Due to flight scheduling and availability, some departures may occur on Day 0. Affected customers must be available to depart the day before. Flight times will be indicated on your final documents, issued 4-6 weeks before departure.*

## Missed Flights

If you fail to arrive for your outbound flight, you risk all flight and land arrangements in your destination being automatically cancelled by the airlines and land operator, respectively. Additional fees may apply to reinstate these services. If you miss your flight for whatever reason, please contact us as soon as possible to make arrangements.

## Cruise

### Holland America's Westerdam

Step aboard the contemporary MS Westerdam, refurbished in 2017, with a cozy capacity of only 1916 guests. Indulge in culinary delights at Lido Market, Dive In, The Dining Room or enjoy 24 hour room service. For an extra special treat, check out small cover-charge specialty restaurants like Pinnacle Grill and Canaletto.

Entertainment options abound, with Billboard Onboard offering lively performances like 60 Years of Chart Toppers. The World Stage hosts captivating performances day and night including the Step One Dance Company's contemporary choreography. Stay active with Pickleball at Sea, Holland America's exclusive partnership with the Professional Pickleball Association, or hit the professionally staffed Fitness Center for a workout. Relax at the Greenhouse Spa and Salon (additional cost) or take a dip in one

of the pools. Rock out at the Rolling Stone Lounge, where classic hits come to life. With so much to do, a day on board Holland America's MS Westerdam is never boring.

### Holland America's Nieuw Amsterdam

The MS Nieuw Amsterdam, a sophisticated Signature Class vessel, celebrates the glamour of New York City through its curated \$3 million art collection and elegant, mid-sized design. Onboard, the experience is defined by a balance of relaxation and world-class entertainment, featuring the famous Music Walk® with venues like Billboard Onboard, and the Rolling Stone Lounge. Culinary enthusiasts can enjoy the fleet's exclusive Morimoto by Sea restaurant, alongside staples like the Pan-Asian Tamarind and the classic Pinnacle Grill (charges apply). For rejuvenation, the ship offers the tranquil Greenhouse Spa & Salon (not included) and a retractable glass-roofed Lido Pool, perfect for scenic cruising. This combination of refined enrichment, diverse dining, and soulful live music creates a classic cruise atmosphere that remains timelessly upscale.

### Holland America 'Have It All' upgrade package inclusions:

The longer your cruise, the more you can explore. Receive shore excursion credit to apply towards a variety of adventures and experiences:

- 6-9 Day cruises (excludes voyage less than 6 days long) US\$100 per person shore excursion credit
- 10-20 Day cruises - US\$200 per person shore excursion credit
- 21+ Day cruises (excludes Grand Voyages and World Sectors), US\$300 per person shore excursion credit

Signature Beverage package: Choose from a large selection of wine, beer, spirits and cocktails, plus non alcoholic options like sodas, specialty coffees and more - with service charges included. (Daily limit of 15 beverages per person, which includes all beverages priced at US\$11.00 or less and includes beverage service charges.

Speciality dining: Enhance your cruise with

award winning speciality dining at Pinnacle, Canaletto or Tamarind (restaurant availability is based on cruise ship):

- 6-9 Day cruises (excludes voyage less than 6 days long) 1 night speciality dining per person
- 10-20 Day cruises - 2 nights speciality dining per person
- 21+ Day cruises (excludes Grand Voyages and World Sectors), 3 nights speciality dining per person

Wi-Fi surf package: Stay connected throughout your journey. Surf the web, use social media, check email and send messages to family and friends.

## Please note:

- *For Terms & Conditions of the Holland America Upgrade Package please refer to the [merchant's website](#) for additional T&Cs.*

## Onboard currency:

USD\$

## Cabins/Staterooms:

### Amenities

- Daily housekeeping
- Complimentary 24-hour room service
- Elemis Aromapure soap, lotion and shampoo
- Luxurious bathrobes
- Generous storage
- Fresh fruit upon request
- Safe
- Ice service
- Shoeshine
- TV with On Demand movies and programming

### Inside Staterooms: From 13m<sup>2</sup>

Features two lower beds that can convert to one queen-size bed, Holland America's signature Mariners Dream bed with a plush Euro-Top mattresses, premium massage shower heads and a host of amenities are featured in these very comfortable staterooms.

### Oceanview Staterooms (Obstructed): From 15m<sup>2</sup>



# Important Information

Features two lower beds that can convert to one queen-size bed, Holland America's signature Mariners Dream bed with plush Euro-Top mattresses, premium massage showerheads, a host of amenities and an obstructed ocean view.

Oceanview Staterooms (Unobstructed):  
From 15m<sup>2</sup>

Features two lower beds that can convert to one queen-size bed, Holland America's signature Mariners Dream bed with plush Euro-Top mattresses, premium massage showerheads, a host of amenities and an unobstructed ocean view.

Verandah Staterooms (Unobstructed):  
From 19m<sup>2</sup> including the verandah

Filled with light from floor-to-ceiling windows overlooking a private verandah, these staterooms include a sitting area and two lower beds that are convertible to one queen-size bed that has Holland America's signature Mariner's Dream bed with plush Euro-Top mattresses. There's also a bathtub with premium massage shower heads.

*Please note:*

- All staterooms are subject to availability; some staterooms may have restricted views.
- Cruise staterooms are booked on a guaranteed basis and are assigned by the cruise line prior to departure.

## Cruise Arrival and Departure Times:

Please keep in mind that the provided cruise arrival and departure times are an approximate and will be finalised upon receipt of your cruise tickets.

## Accommodation

### Accommodation Used:

3-4 Star Properties (Self-Rated)  
Anchorage, USA: Westmark Hotel & Conference Center  
Denali, USA: Holland America Denali Lodge  
Vancouver, Canada: Hotel Belmont  
Vancouver - MGallery Collection

*Please note: Accommodation/rooms offered are based on a lead-in room type and are subject to availability based on seasonality. In the instance a property is not available, a similar standard of accommodation will be provided. Properties will be confirmed and included in your travel pack, which you will receive 4-6 weeks before travel.*

### Accommodation Location

To ensure a comfortable and convenient experience for everyone, we've carefully selected hotels that best suit the size and specific needs of each group. While this means your accommodation may not be in the city centre, you can rest assured that our hotels are typically located near public transportation and a variety of local restaurants and attractions. Once your tour begins, your friendly driver or tour leader will be happy to help you get your bearings and offer assistance, should you need it.

### Denali: Holland America Denali Lodge

Holland America Denali Lodge (formerly McKinley Chalet Resort) is situated in the heart of the Denali Canyon on the banks of the Nenana River, less than 2 miles from the entrance to Denali National Park. Featuring modern amenities, comfortable accommodations, and warm northern hospitality at the edge of the wilderness, the hotel has everything you need for an unforgettable Denali vacation. Guests have multiple dining venues to choose from (not included), plus the exciting Music of Denali dinner theatre at the Gold Nugget Saloon. Denali Square is a gathering place with fire pits and daily entertainment. Welcome to Denali National Park and your home base for exploring the area! Shuttle services are available between the lodge and the park, just consult the front desk for shuttle times and locations. If adventure is what you seek, stop by the tour desk, where helpful representatives will assist in planning activities like wildlife viewing, river rafting or an ATV adventure (charges apply).

Holland America Denali Lodge Amenities

- 582 guest rooms
- Karstens Public house
- Music of Denali Dinner Theatre
- Tour desk
- Gift shop
- Guest laundry facilities
- Hair dryer
- Canyon Ridge Grill
- Grizzly Grind Espresso
- Shuttle to National Park Visitor Center
- Complimentary wireless internet
- Complimentary parking
- Coffee maker
- Non-smoking hotel

### About Denali

The name Denali means "High One" in the Athabascan language. The magnificent mountain is 6,190 metres tall and is the highest peak in North America. Seeing the high one will take your breath away and a Tundra Wilderness Tour provides visitors to Alaska the best opportunity for an up-close view. Denali National Park and Preserve is six million acres with only one road. The Park is well known for wildlife, including 39 species of mammals, 169 bird species, 14 fish species and one type of amphibian. Visitors to the Park are often on the lookout for "the big five": bears, moose, wolves, Dall sheep, and caribou. As you embark on your Denali adventure, a few essential "know before you go" tips will ensure a safe and enjoyable experience. Packing proper gear, dressing in layers, and carrying essentials like food, water and bear safety items is crucial. Additionally, respecting the wildlife and adhering to park regulations are essential for preserving the integrity of this majestic wilderness. So, whether you yearn to gaze in awe at Denali's snow-capped majesty or seek to encounter the park's diverse wildlife and awe-inspiring landscapes, Denali National Park promises an unforgettable journey of exploration and discovery, captivating your senses and leaving you with cherished memories that will last a lifetime.

### Denali Dining Plan

Add the Denali Dining Plan and enjoy 6



# Important Information

meals during your stay at the Denali Lodge: 2 Breakfasts, 2 Lunches & 2 Dinners including gratuities

- Breakfast: Continental or grab-and-go with coffee or tea.
- Dinner: Main with an appetiser or dessert
- Lunch on board the McKinley Explorer®: Main
- Box lunch on the Denali Tundra Wilderness Tour
- Music of Denali dinner: All-you-can-eat family-style dinner with coffee or tea

## Music of Denali Dinner Theatre

Kick back and laugh at this sidesplitting musical comedy about the first men to reach the summit of Denali (Mt. McKinley). Enjoy this spirited performance while feasting on an all-you-can-eat family-style dinner featuring Alaska salmon, smokehouse BBQ, hearty mashed potatoes, and house-baked apple crisp for dessert.

## Extra Nights

Not available.

*Please note: If you are interested in booking additional nights of accommodation pre or post-tour, please wait until you receive your travel documentation approximately 4-6 weeks before departure for the confirmed list of hotels. If booking your own additional accommodation directly with the hotel, please be aware that you may be required to change rooms at the start/end of your tour.*

## Maximum Room Capacity

2 people.

## Triple Share

Not available.

## Bedding Configuration

Twin or double (subject to availability).

## Optional Tours/activities

Holland America 'Have It All' Package: \$595 per person (must be purchased for all customers sharing a stateroom)  
Denali Dining Plan - \$459 per person (must be purchased for all customers

sharing a room at the Holland America Denali Lodge)

### Please note:

- *Prices are based per person, are subject to availability, time permitting and weather conditions*
- *The optional tours listed above must be purchased on checkout or over the phone before submitting your passenger information form (subject to availability).*
- *Some tours or shore excursions require minimum numbers to operate.*
- *Shore excursions can be booked/reserved directly with the cruise line before travel (subject to availability)*
- *Shore excursions can also be booked whilst onboard (subject to availability).*
- *Shore excursion programmes and itineraries may vary depending on local conditions and/or any unforeseen events concerning the timing on the day of the tour. Some excursions are very popular, and therefore availability cannot always be guaranteed, it is advisable to book in advance to avoid disappointment.*

## Exclusions

- Visa fees and requirements
- Domestic transfers and flights not stated in the deal offer
- Meals/beverages not stated in the deal offer
- Optional gratuities/tipping
- Optional activities/tours
- Personal expenses
- Travel insurance
- Any costs associated with an interruption to your tour as a result of an airline schedule change or cancellation
- Mandatory city tax

*Please note: Many hotels and resorts in the USA, including Hawaii, charge a daily resort fee. This mandatory fee covers various hotel extras, and must be paid to the hotel upon arrival or check-out. It cannot be prepaid. Further details will be included in your travel documents.*

## Gratuities / Tipping

### Land

Gratuities or tips are not included as part of the Alaska cruisetour fare, except for luggage-handling gratuities for the included hotels in the USA. Tipping practices on land differ from those on board the ship. Tipping is strictly up to the individual guest and should be based on the quality of service received.

If you wish to offer your appreciation through gratuity, you may use the following guidelines:

- Transfers: USD \$1 per bag
- Driver Guides: Up to USD \$10 per day for a full day of touring
- Housekeeping: USD \$2 per room, per night
- Food Service: 18-20% of the pre-tax bill
- Tour Director: USD \$10 per guest, per day
- Rail Team: Up to USD \$10 per guest, per day
- Excursions: Discretionary gratuities are customary

### Please note:

- *Luggage-handling gratuities are included in your cruisetour fare for all hotels included in the USA. This is not included for the pre or post cruisetour hotel in Vancouver.*
- *Tipping for services provided is always a matter of personal discretion; however, please be aware that many locals consider tipping part of their normal remuneration, and they may approach you for payment; there's no need to be intimidated by the request.*

## Cruise

Gratuities (tips) are not included for the cruise staff's services throughout this tour's cruise component. Holland America Line is an internationally registered company & operates to US & European standards, both of which have an economy driven by a tipping culture. Gratuities are expected on your cruise and will be charged to your onboard account at approx USD \$17 per guest per day for non-suite stateroom guests and \$19 per guest per day for suite guests. If you have any questions regarding the gratuities on your cruise, please speak to the guest services staff onboard the ship.



# Important Information

## Other Important Information

### TOUR GUIDE VS. TOUR LEADER

#### Tour Guide:

Often locals with intimate knowledge of an area, its culture, and history. Their role entails providing commentary, routing the tour, and seeing that people have a good time. They are a licensed, qualified expert who supplies specific information on the history, art, architecture and culture of the city/village/attraction where they are guiding the tour. The guide meets the group at the required place and leaves it at the end of the tour; they do not travel with the group.

#### Tour Leader:

An experienced person tasked with ensuring the smooth operation of tours, as well as providing practical support to passengers throughout the whole trip. Their role primarily includes assisting with accommodation, transportation between locations, and communication with tour guides at each stop. A tour leader may provide general guidance around a city or village and offer information on the place visited on the bus. However, they are not required to have specific art, architecture, or historical knowledge. They are not allowed to provide a guided tour or commentary of a city/village/attraction once there and, if caught doing so, can be fined.

*Please note: Tour leaders/guides are not a standard inclusion in all travel offers. Tour leaders/guides will only be made available when required to enhance the experience of the destination featured.*

### CLIMATE & AVERAGE TEMPERATURES

#### Denali

In Denali National Park, May marks the start of the visitor season with cool temperatures ranging from -1°C to 12°C. Snow may still linger in higher elevations, and the landscape begins to awaken with budding vegetation. August is the warmest month, with daytime temperatures typically between 7°C and 18°C, although

rain is common and clouds often shroud the mountains. By September, temperatures cool to between -3°C and 10°C, and the park begins to transition into autumn. The tundra turns vivid red and gold, wildlife is active in preparation for winter, and snowfall can return by the end of the month, especially at higher altitudes.

#### Alaska

In Alaska, the weather varies widely by region, but in general, May is the start of spring, with temperatures ranging from 1°C to 13°C in coastal areas like Anchorage and slightly cooler inland. Snow is mostly gone in lower elevations, and daylight hours increase rapidly. August is one of the warmest months, with average temperatures between 10°C and 19°C, but it's also part of the rainy season, especially in coastal and southeastern regions. September brings cooler autumn weather, with temperatures ranging from 3°C to 14°C. Fall colours peak, especially in the interior, and the first snowfall often arrives by late September in many parts of the state, particularly further north and inland.

#### Vancouver

In Vancouver, May brings mild spring weather, with temperatures typically ranging from 9°C to 17°C. The days grow longer, and rainfall begins to ease compared to earlier months, though occasional showers are still common. August is the warmest and driest month, with average temperatures between 14°C and 22°C, making it ideal for outdoor activities. September sees a gradual cooling, with temperatures ranging from 11°C to 19°C. The early part of the month often retains summer warmth, but rain becomes more frequent toward the end as autumn approaches.

#### Weather

We always suggest referring to an online source for the most up-to-date weather information for your destination/s.

#### FLIGHTS

### Seat Selection & Frequent Flyer Points:

We do not arrange seat selection. It is essential to highlight that some airlines do not allow pre-selected seats. We strongly suggest you contact the airline directly with seating allocation requirements and/or arrive at the airport earlier to arrange your seating. While we do not add frequent flyer member details to bookings, you can do this directly with the airline once you have your flight information.

### Dietary Requests

Meal options and availability differ between airlines and routes therefore not all dietary requests can be accommodated. If your flight includes meals we will select the most suitable option available based on the dietary requirements you have specified. All meal requests are subject to airline approval and are not guaranteed, therefore we recommend preparing for your flight by bringing appropriate food for yourself, as required.

### Passport Validity:

Customers must provide valid passport details either at the time of purchase or no later than 90 days before the departure date. Failure to do so may result in the cancellation of the booking. Customers will be responsible for any costs and fees incurred in this instance.

### CRUISE

#### Embarkation / Disembarkation:

- Begins approximately 2 hours after docking.
- Due to security reasons, all guests must be on board 2 hours before sailing.
- Itineraries are subject to change at any time without notice.
- Check your specific sailing for exact departure and arrival times. All times are local to the port.

*Please note: Strict Covid-19 terms may also apply regarding proof of insurance covering Covid-19 and/or vaccination. Please refer to the cruise lines' terms and conditions for further information before boarding.*

# Important Information

## Cruise Loyalty Discounts:

*Please note: Travellers must contact the cruise line directly upon receiving their travel documents in order to request any membership benefits they may be entitled to.*

## COACH TOUR

### Meals:

For meals not included, the tour leader (when available) will offer assistance with reservations, suggestions and directions to local restaurants. It is your responsibility to notify us of any dietary requests/requirements.

*Please note: We will do our best to meet your requests/requirements; however, we cannot guarantee that we will always be able to.*

### Luggage:

You will be responsible for all your personal belongings whilst on tour. You must carry your own luggage from the vehicle to the hotel room and back to the vehicle. The driver will assist with the uploading and unloading of bags from the vehicle.

## OTHER

### Mobility:

If you require wheelchair access please contact our friendly sales and service team to inquire on your behalf.

### Fitness Level Required:

Adventure (and spontaneity) create some of the best travel memories. Bear in mind, your home schedules and timings might not be adhered to on tour - it's all part of the fun!

A moderate level of fitness will be required.

Expect a moderate pace of touring with a focus on guided tours that may include full days with extended activity, guided city tours or nature walks. You will require a general level of fitness for unassisted navigation of stairs and inclines, longer distances with possible periods of standing when visiting sites, walking on sloping, uneven ground or elevations. You will be

responsible for your own luggage and have the ability to board all modes of transport without assistance. Please note: Many areas may be inaccessible to wheelchairs or mobility scooters, where the unassisted use of personal walking sticks and other aids may be required. Although some assistance may be available, every traveller should be self-reliant during all aspects of their travel.

*Please note: It is expected that every traveller must be self-reliant and able to undertake all aspects of their own travel. Please speak to your booking agent about your personal circumstances and any assistance requirements to ensure this tour is right for you.*

*Please note: If you have any concerns, please consult your healthcare provider prior to purchase/travel.*

### Yellow Fever:

A valid international certificate of vaccination against Yellow Fever is required in many countries. You may need to present this on arrival at the airport or border crossing. Some countries will refuse entry if you are unable to present your certificate. It's also common for your home country to request a Yellow Fever certificate upon arrival.

You must check with your doctor well before leaving home about the Yellow Fever requirements for the countries you'll be visiting.

### Sightseeing:

*Please note: If entry to a site is affected by changes in operating hours or public holiday closures, your itinerary, where possible, may be adjusted, or a similar activity will be offered in its place (subject to availability).*

### Wildlife sighting:

TripADeal cannot guarantee animal sightings on tour. Wildlife are unpredictable and factors such as weather conditions, predatory fear and animal movements can impact sightings.

### Shopping:

Shopping overseas can be a daunting and confusing experience, especially when there is a language barrier. Please be very cautious when foreign currencies and prices are involved. If paying by credit card, please pay close attention to the amount you are being charged and keep all your receipts.

Do not make any purchases you are not comfortable with or feel pressured into. If you are uncertain or need assistance with the language barrier, please seek assistance from your Tour Guide/Leader. Please refer to our [Terms and Conditions](#) regarding shopping for further information.

## Visas

### Canada

Australian and New Zealand passport holders must apply for an electronic travel authorisation (eTA) before travelling to Canada by air. An Electronic Travel Authorization (eTA) is an entry requirement for visa-exempt foreign nationals travelling to Canada by air. An eTA is electronically linked to a traveller's passport. It is valid for up to five years or until the passport expires, whichever comes first. If you get a new passport, you need to get a new eTA.

### United States

If travelling on an Australian passport, an ESTA (Visa Waiver) for the USA is a strict requirement when travelling to or flying through the USA. Once a USA ESTA Visa Waiver is issued it is valid for 2 years or until your passport expires (whichever is sooner) and will allow multiple entries into the USA.

### Important:

- *Please start arranging your visa three weeks before departure to account for any delays due to consulate operating hours.*
- *Visa rules are subject to change. Please check with the nearest embassy, consulate or immigration department of the destination/s you are visiting once you receive your travel documentation to ensure you have the most up to date information.*



# Important Information

- *It is your responsibility to be travel-ready and ensure that you are aware and comply with any destination or travel requirements, including the validity of all required travel documents.*
- *Passengers who are not Australian citizens must also check with the respective consulate or visa agency to determine what their visa requirements are and what personal identification is required.*
- *It is also important to note that some areas of employment, such as journalism, government authorities and charity organisations, may have additional restrictions in applying for visas. This may, in turn, affect the type of application required.*

## Travel Insurance

Embarking on your next trip is exciting, and while you hope the unexpected does not happen, it is best to be prepared. We strongly recommend you take out travel insurance when making your booking. Whether it's a potential medical emergency, a flight cancellation, a delayed suitcase, or an unforeseen event, it's important to ensure you're adequately protected. For more information or advice visit <https://www.tripadeal.com.au/travel-insurance>

## Schedule Of Fees

### Voluntary Changes

This includes booking changes requested by you, including but not limited to those changes requiring an airline ticket or a Purchase Confirmation reissue.

- Changes - \$100 per booking and any additional charges applied by the airline/ cruise company/accommodation/other travel providers.

### Name Changes Due To Passenger Error

- If the incorrect name has been provided, charges of \$100 per booking and any additional charges applied by the airline/ cruise company/accommodation/other travel providers.

### Supplier Fees

In the event the tour package you have purchased is unable to proceed, and/or a Travel Supplier is unable to fulfil the tour due to external circumstances (Limitation of Liability e.g. a Force Majeure event), there may be a fee or amount of money that is withheld by our Suppliers and is unrecoverable. This may be due to non-refundable airline tickets, cancellation penalties with cruise cabins or unrecoverable payments with our land/accommodation partners. If refunds are not available from Suppliers, we will endeavour to obtain a travel credit on the best terms available and communicate these outcomes to you. In the event we are unable to obtain a refund or travel service credit, or part thereof, this cost is passed on to the customer as a Supplier Fee.