



# Seabourn Kimberley 2027

## AUSTRALIA

### The Offer

Swap the everyday for the extraordinary cruising the Kimberley coastline with Seabourn. Cruise between Darwin and Broome aboard Seabourn Pursuit, visit remote locations including the King George River, Ashmore Reef, Talbot Bay, the Lacepede Islands and more.

Itinerary 1 begins with a flight to Darwin, then steps aboard the elegant Seabourn Pursuit to navigate along the Kimberley coast. Experience personalised service and world-class gourmet dining onboard, as you explore this remote region armed with expert insights and immersive Zodiac excursions. Discover the towering twin waterfalls of the King George River by Zodiac, view the ancient Gwion Gwion rock art of Vansittart Bay and the spectacular landscapes along the Hunter River. Search for turtles and darting fish among the colourful corals of Ashmore Reef, before sailing towards the remote Kuri Bay and Freshwater Cove. Watch in awe as Montgomery Reef seems to rise from turquoise seas and admire the tidal power of Talbot Bay's Horizontal Falls. Look out for the rare bird colonies of the Lacepede Islands before concluding your voyage in the historic pearling capital of Broome.

With four varying itineraries to choose from, including alternate routes and a reverse sailing from Broome to Darwin, you are spoilt for choice!

Each itinerary includes return domestic (or international where applicable) flights, a 10-night luxury Seabourn Kimberley expedition cruise, 2 nights of 4-star accommodation, 29 meals while cruising and more.

Want more? Treat yourself to a cabin upgrade or extend your trip with Arrive Early and Stay Behind options.

Offer available for a limited time or until sold out. TRIP A DEAL PTY LTD: 50149240433

Updated: 08 Jan 2026 15:35:36

Have a question about this deal? We're here to help.  
Call our friendly team on 1300 158 912



## 13-DAY CRUISE PACKAGE | SEABOURN KIMBERLEY 2027

### The Itinerary

#### Itinerary 1 - 11th June 2027 departure: Darwin to Broome

##### Day 1 Fly to Darwin, Australia

Today make your own way to the airport for your flight to Darwin, Northern Territory. Upon arrival a transfer is provided to your hotel. Once checked in, the remainder of your day is at leisure.

Capital of the Northern Territory (NT), with an estimated population of 150,000, Darwin is home to most of the Northern Territory population. John Clements Wickham named the region "Port Darwin" in honour of their former shipmate Charles Darwin on the 9th September 1839, when the HMS Beagle sailed into Darwin harbour during its survey of the area. The Darwin region, like much of the Top End, experiences a tropical climate with a wet and dry season and boasts a vibrant multicultural community, where Indigenous heritage blends seamlessly with the influence of diverse international populations. Darwin's rich history provides an incredible background for the diverse cultural and historical activities. Interestingly, the city itself has been rebuilt almost entirely four times, following cyclones and Japanese air raids in World War II.

**Overnight:** DoubleTree by Hilton, or similar, Darwin  
**Meals included:** None

**Day 2 Darwin - Embark Seabourn Pursuit 10-night Kimberley Expedition**  
**Departs:** 17:00

After check out this morning a transfer is provided to the Darwin Cruise terminal to embark on the luxury Seabourn Pursuit. Once on board the remainder of the day is at leisure exploring this amazing ship.

##### *Please note:*

- *This Kimberley Expedition itinerary is flexible to take advantage of changing weather and tidal conditions. This itinerary showcases a selection of the key destinations you may visit. The following destinations and their order is subject to change at the discretion of the ship's crew.*
- *Shade is limited on included expeditions; to avoid sunburn, wear light, long clothing suitable for use as a cover-up. Bring a hat and sunglasses; wear biodegradable/reef-safe sunscreen. Bring bottled water. Life jackets are provided and must be worn. Wildlife sightings are likely but are not guaranteed.*

**Overnight:** Seabourn Pursuit  
**Meals included:** Dinner

**Day 3 King George River**  
**Arrives:** 12:00 - **Departs:** 19:00

Explore the King George Falls, the highest twin waterfalls in Australia at 80 metres in height. The river was named in 1911 by explorer Charles Conigrave after a privately funded expedition to the area. The river is named in honour of King George V. This incredible sandstone gorge is a highlight of any Kimberley Expedition.

Included Expedition (No booking required) - Zodiac Tour





## 13-DAY CRUISE PACKAGE | SEABOURN KIMBERLEY 2027

### The Itinerary

#### Itinerary 1 - 11th June 2027 departure: Darwin to Broome

Join the expedition team and leave the anchorage position in Koolama Bay to head into the entrance of the King George River and falls. The 10 nautical mile Zodiac expedition takes you through a winding sandstone gorge, with incredible honeycomb and vertical erosion. Keep a lookout for Saltwater crocodiles, sleeping on the banks of the river. A wide variety of birdlife will also be pointed out by your Zodiac driver/naturalist.

Depending on conditions, Seabourn hopes to get the Zodiacs close to the 80 metre high waterfalls for a refreshing spray to cool you down. The King George Falls Zodiac tour is one of the highlights of the Kimberley region and a wonder of nature.

*Please note: All shore excursions are subject to availability and are weather and conditions permitting.*

**Overnight: Seabourn Pursuit**

**Meals included: Breakfast; Lunch; Dinner**

##### Day 4 Vansittart Bay

**Arrives: 07:00 - Departs: 15:00**

Vansittart Bay is a small remote 30 square kilometre bay, synonymous with the Truscott air base that was operational during the Second World War. The bay features beaches and aircraft wrecks, but the reason for your visit is the Gwion Gwion or Bradshaw art found on Jar Island. Jar Island was named by an early survey team who found clay jars on the island. These jars were the same type as those used by the Macassans who would travel down from (what we know today as) Indonesia to the top end of Australia in search of sea cucumbers.

According to Aboriginal legend, the art was created by birds. It was said that these birds pecked the rocks until their beaks bled, and then created these fine paintings by using a tail feather and their own blood. The bird said responsible was known as Gwion. The Gwion Gwion art is often called Bradshaw art after Joseph Bradshaw, the first European person to record the style of painting in 1891.

Included Expedition (No booking required) - Zodiac Landing on Jar Island

This morning head out with the expedition team to explore the uninhabited, Jar Island. From the ship's anchorage position, a short Zodiac ride will bring you ashore for a wet landing onto a perfectly white sandy beach. Once ashore, a short walk of about 250 metres along a flat sandy beach and then on to flat rocks, will bring you to the base of the rock art gallery that depicts the Bradshaw or Gwion Gwion art. After a short scramble over some rocks, you will be at the gallery itself, enjoying a rare glimpse into a fascinating part of history along with a vivid interpretation by the expedition team.

*Please note: All shore excursions are subject to availability and are weather and conditions permitting.*

**Overnight: Seabourn Pursuit**

**Meals included: Breakfast; Lunch; Dinner**

##### Day 5 Ashmore Reef

**Arrives: 08:00 - Departs: 13:00**







## 13-DAY CRUISE PACKAGE | SEABOURN KIMBERLEY 2027

### The Itinerary

#### Itinerary 1 - 11th June 2027 departure: Darwin to Broome

Ashmore Reef Marine Park is located about 630 kilometres north of Broome and 110 kilometres south of the Indonesian Islands of Rote. The Australian marine park covers an area of 583 square kilometres, including Ashmore Reef. The marine park comprises several marine habitats, including seagrass meadows, intertidal sand flats, coral reef flats, and lagoons, and supports an important and diverse range of species, including 14 species of sea snakes, a population of dugong that may be genetically distinct, a diverse marine invertebrates fauna, and many endemic species, especially of sea snakes and mollusks. The area contains feeding and nesting sites for loggerhead, hawksbill, and green turtles.

**Overnight: Seabourn Pursuit**

**Meals included: Breakfast; Lunch; Dinner**

#### Day 6 The Seabourn Kimberley Experience

**Arrives: 07:00 - Departs: 17:00**

Imagine waking up to the golden hush of dawn as your ship glides through ancient sandstone gorges, the air thick with the scent of salt and adventure. This is no ordinary day, with no fixed itinerary, the day unfolds like a secret whispered by the land itself. Search for the region's unique wildlife, shy but nimble short-eared wallabies foraging in the cool shadows of the cliffs, and giant saltwater crocodiles silently surveying the mangroves. The Expedition Leader crafts a bespoke adventure, guided by tides, weather, and instinct. This is the Kimberley at its most raw, most real and most unforgettable.

**Overnight: Seabourn Pursuit**

**Meals included: Breakfast; Lunch; Dinner**

#### Day 7 Hunter River

**Arrives: 07:00 - Departs: 17:00**

The Hunter River was named in 1820 by the explorer Philip Parker King aboard the Mermaid Cutter, while making charts in the area. The river was named after the surgeon on Mermaid, James Hunter. The river is home to a large mangrove estuary, that forms part of Porosus Creek (Crocodile Creek) and home to several bird species, Osprey, Brahminy Kite, and White-tailed Sea eagles.

Mitchell River National Park is one of Kimberley's two national parks. It is about 350 kilometres north-east of Derby, and 270 kilometres north-west of Wyndham. The park of 115,300 hectares lies in some of Australia's most remote and inaccessible country and contains some of the region's scenic jewels. The Mitchell Plateau is one of the most scenic and biologically important areas of the State. Small patches of rainforest grow around the margins of the plateau, where they are protected from fire and receive additional moisture.

Included Expedition (No booking required) - Zodiac Cruise

Leaving the ship from its anchorage position, start a Zodiac tour of Hunter River, passing first Naturalist Island and then Indian Head (a sandstone headland depicting the head of an Indian). Near the end of Hunter River, turn left down Porosus Creek named aptly after the many saltwater crocodiles that call the area home. Depending on the tide, your Zodiac may head into the







## 13-DAY CRUISE PACKAGE | SEABOURN KIMBERLEY 2027

### The Itinerary

#### Itinerary 1 - 11th June 2027 departure: Darwin to Broome

mangroves and explore this unique environment, coupled with detailed interpretation of the area. Keep a look out, as sightings of saltwater crocodiles, osprey, White Bellied Sea Eagles and Brahminy Kites are quite common. This is a magnificent Zodiac cruise showcasing one of the Kimberley highlights.

*Please note: All shore excursions are subject to availability and are weather and conditions permitting.*

**Overnight: Seabourn Pursuit**

**Meals included: Breakfast; Lunch; Dinner**

##### Day 8 Kuri Bay

**Arrives: 07:00 - Departs: 17:00**

This lovely bay is located in Australia's northwest Kimberley region, some 225 kilometres from the nearest town of Derby. The name springs from the fact that the bay houses Australia's first pearl farm, started in 1956 by Tokiuchi Kuribayashi, who perfected the techniques of cultivating silver-lip pearl oysters in the warm Indian Ocean waters after Australia authorised production of cultured pearls. Today the aquatic farm is operated by the Paspaley company, and at one time produced about 60% of the world's large white South Sea pearls.

The bay is alive with other sea life, including sharks, turtles and huge saltwater crocodiles. It is part of the Prince Regent Nature Reserve, as well as the Kumunya Aboriginal Reserve. The nearby Camden Sound Marine Reserve is the most important humpback whale calving grounds in the world, attracting up to 1,000 whales during the season from October to June. Another famous sight is a multitude of waterfalls created by the huge Montgomery Reef,

Australia's largest inshore reef, when the 10-metre tide change creates immense cascades of water off the sides as the reef-top "island" appears above the receding sea. An optional visit to Sheep Island reveals the ruins of a 19th century settlement, along with the graves bearing silent witness to the settler's failure. The rugged cliffs glow red at sunrise and sunset (not included).

*Please note: Optional Seabourn shore excursion or Ventures by Seabourn access only; wheelchair access limited. If not participating in one of these options, no port access will be available.*

**Overnight: Seabourn Pursuit**

**Meals included: Breakfast; Lunch; Dinner**

##### Day 9 Freshwater Cove / Montgomery Reef Freshwater Cove

**Arrives: 06:30 - Departs: 12:30**

Wiggingarra Butt Butt (Freshwater Cove) lies on the mainland adjacent to Montgomery Reef. Named appropriately, as fresh water pours from out of the ground all year round, making this an ideal area for a traditional camp. The area is managed in partnership with the Damibmangari traditional owners, who have strong cultural connections to the Lalang-garram / Camden Sound Marine Park and Montgomery Islands.

##### Montgomery Reef

**Arrives: 13:15 - Departs: 22:30**

Montgomery Reef is a reef off the Kimberley coast of Western Australia. It is situated at the southwestern end of Camden Sound and surrounds Yawajaba (Montgomery) Island. With its

Offer available for a limited time or until sold out. TRIP A DEAL PTY LTD: 50149240433

Updated: 08 Jan 2026 15:35:36

Have a question about this deal? We're here to help.  
Call our friendly team on 1300 158 912



## 13-DAY CRUISE PACKAGE | SEABOURN KIMBERLEY 2027

### The Itinerary

#### Itinerary 1 - 11th June 2027 departure: Darwin to Broome

total area of 400 square kilometres it is the world's largest inshore reef. The reef and island were named by Philip Parker King, the first European to sight the island, aboard the HMS Mermaid while exploring the area in 1818. King named the island after the ship's surgeon, Andrew Montgomery.

When the tide is out, vast lagoons, sandstone islets, and a central mangrove island are revealed. The outward movement of the tide forms a torrent of water, creating a river cutting through the reef and hundreds of cascading waterfalls. At low tide, more than 4 metres of reef can be exposed. While the tide is going out, the waterfalls attract migratory wading birds, feeding turtles manta rays, black tipped reef sharks and dugongs.

##### Included Expedition (No booking required) - Zodiac Cruise

Arriving on high tide, leave the ship and head out by Zodiac to the edge of Montgomery reef. As soon as the tide drops it exposes the "river" a narrow channel you will explore by Zodiac. Witness torrent water and endless cascading waterfalls. As the water drops further, the reef is exposed, and fish are trapped on the reef and in pools. They bring in an array of birdlife. Keep a look out for the white and grey morph eastern reef egret, ospreys, white bellied sea eagles and more. In the water keep an eye out for see dugongs, stokes sea snake, tawny nurse sharks and hammerhead sharks. When the tide is out, many turtles are concentrated into the 'river', and over a few hours one can see dozens and dozens of them. They are often found both in the water and stranded on the reef.

##### **Overnight: Seabourn Pursuit**

**Meals included: Breakfast; Lunch; Dinner**

##### **Day 10 Talbot Bay**

**Arrives: 01:30 - Departs: 01:00 (the following day)**

Talbot Bay is the site of the Horizontal Waterfalls, that lie about 32 kilometres to the east of Cockatoo Island in the Buccaneer Archipelago. The effect of the waterfalls is created by the rapid tidal fall on the ocean-side of gaps in the sandstone cliffs. Waters on the inland side of the gaps cannot escape fast enough and so a "horizontal waterfall" is created by the cascades, with water levels differing sometimes by several metres on either side of the gaps. The gaps themselves were once layers of siltstone in the strata of the sedimentary rock. It is through these gaps that tide movements push sea water to create the Horizontal Waterfalls.

##### **Overnight: Seabourn Pursuit**

**Meals included: Breakfast; Lunch; Dinner**

##### **Day 11 Lacepede Island**

**Arrives: 12:00 - Departs: 17:00**

The Lacepede Islands are a remote and pristine region, located in the Kimberley region of Western Australia. It is renowned for its stunning natural beauty and abundant wildlife. The islands feature rugged coastlines, white sandy beaches, and crystal-clear waters, making it a haven for nature enthusiasts and birdwatchers. Lacepede Islands are particularly famous for nesting seabirds, including the brown booby and the roseate tern. The islands are also an important site for marine life, with coral reefs and diverse fish species in its surrounding waters. The Lacepede Islands offer a unique opportunity to experience the unspoiled beauty of the Kimberley region.





## 13-DAY CRUISE PACKAGE | SEABOURN KIMBERLEY 2027

### The Itinerary

#### Itinerary 1 - 11th June 2027 departure: Darwin to Broome

Overnight: Seabourn Pursuit

Meals included: Breakfast; Lunch; Dinner

Overnight: Seashells Broome, or similar, Broome

Meals included: Breakfast

##### Day 12 Disembark Broome - Transfer to hotel

Arrives: 07:00

After breakfast this morning, disembark to join an arranged transfer to your hotel. Once checked in, the remainder of the day is at leisure.

Perched on the Northwest edge of Western Australia, Broome was once an isolated gem, reachable only by a rugged dirt road until the mid-1980s. The town is nestled on a narrow peninsula, encircled by the crystal-clear sapphire waters of the Indian Ocean and the tranquil expanse of Roebuck Bay. It stands as a global haven for migratory birds, offering them a scenic stopover on their long journeys.

Broome sprang to life following the discovery of the world's most abundant pearl shell deposit. This revelation sparked a frenzy akin to a gold rush, drawing in hundreds of people lured by the promise of precious treasures. Despite a downturn in the pearl industry during the last century, the allure of Broome's natural splendor and serene ambiance held many captives, anchoring them to this coastal sanctuary.

Today, Broome boasts a unique architectural landscape, a testament to its diverse history. A blend of colonial buildings, old mission houses, churches, and the huts of former pearling masters share the streets with more modern homes. These structures collectively echo a distinctive style that took root over eighty years ago.

##### Day 13 Fly home from Broome, Australia

After check out this morning, join an arranged transfer to Broome Airport for your homeward bound flight.

Offer available for a limited time or until sold out. TRIP A DEAL PTY LTD: 50149240433

Updated: 08 Jan 2026 15:35:36

Have a question about this deal? We're here to help.  
Call our friendly team on 1300 158 912

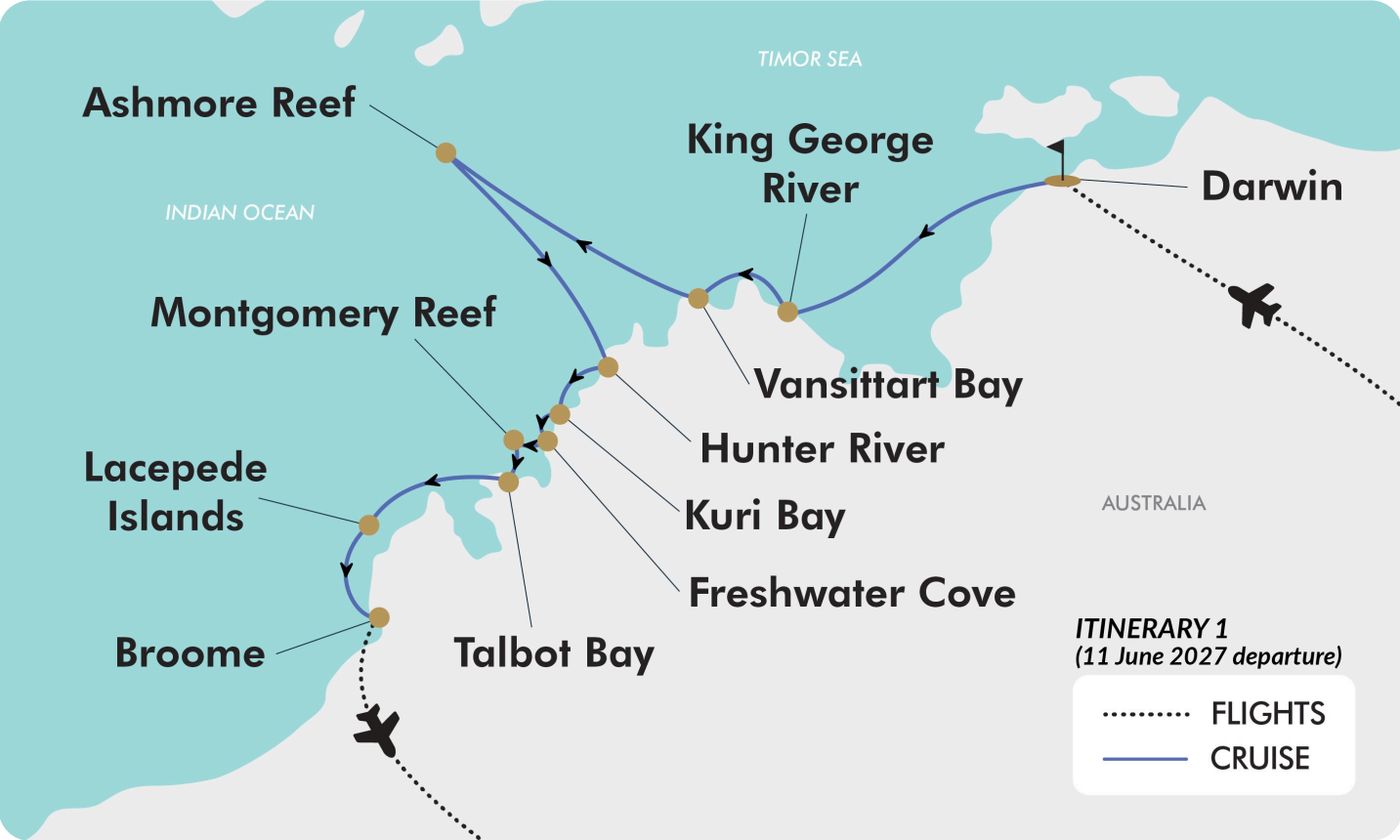




13-DAY CRUISE PACKAGE | SEABOURN KIMBERLEY 2027

# The Map

Itinerary 1 - 11th June 2027 departure: Darwin to Broome



Offer available for a limited time or until sold out. TRIP A DEAL PTY LTD: 50149240433

Updated: 08 Jan 2026 15:35:36





## 13-DAY CRUISE PACKAGE | SEABOURN KIMBERLEY 2027

### The Itinerary

#### Itinerary 2 - 30th June 2027 departure: Darwin to Broome

##### Day 1 Fly to Darwin, Australia

Today make your own way to the airport for your flight to Darwin, Northern Territory. Upon arrival a transfer is provided to your hotel. Once checked in, the remainder of your day is at leisure.

Capital of the Northern Territory (NT), with an estimated population of 150,000, Darwin is home to most of the Northern Territory population. John Clements Wickham named the region "Port Darwin" in honour of their former shipmate Charles Darwin on the 9th September 1839, when the HMS Beagle sailed into Darwin harbour during its survey of the area. The Darwin region, like much of the Top End, experiences a tropical climate with a wet and dry season and boasts a vibrant multicultural community, where Indigenous heritage blends seamlessly with the influence of diverse international populations. Darwin's rich history provides an incredible background for the diverse cultural and historical activities. Interestingly, the city itself has been rebuilt almost entirely four times, following cyclones and Japanese air raids in World War II.

**Overnight:** DoubleTree by Hilton, or similar, Darwin  
**Meals included:** None

**Day 2 Darwin - Embark Seabourn Pursuit 10-night Kimberley Expedition**  
**Departs:** 17:00

After check out this morning a transfer is provided to the Darwin Cruise terminal to embark on the luxury Seabourn Pursuit. Once on board the remainder of the day is at leisure exploring this amazing ship.

##### *Please note:*

- *This Kimberley Expedition itinerary is flexible to take advantage of changing weather and tidal conditions. This itinerary showcases a selection of the key destinations you may visit. The following destinations and their order is subject to change at the discretion of the ship's crew.*
- *Shade is limited on included expeditions; to avoid sunburn, wear light, long clothing suitable for use as a cover-up. Bring a hat and sunglasses; wear biodegradable/reef-safe sunscreen. Bring bottled water. Life jackets are provided and must be worn. Wildlife sightings are likely but are not guaranteed.*

**Overnight:** Seabourn Pursuit  
**Meals included:** Dinner

**Day 3 King George River**  
**Arrives:** 12:00 - **Departs:** 19:00

Explore the King George Falls, the highest twin waterfalls in Australia at 80 metres in height. The river was named in 1911 by explorer Charles Conigrave after a privately funded expedition to the area. The river is named in honour of King George V. This incredible sandstone gorge is a highlight of any Kimberley Expedition.

Included Expedition (No booking required) - Zodiac Tour





## 13-DAY CRUISE PACKAGE | SEABOURN KIMBERLEY 2027

### The Itinerary

#### Itinerary 2 - 30th June 2027 departure: Darwin to Broome

Join the expedition team and leave the anchorage position in Koolama Bay to head into the entrance of the King George River and falls. The 10 nautical mile Zodiac expedition takes you through a winding sandstone gorge, with incredible honeycomb and vertical erosion. Keep a lookout for Saltwater crocodiles, sleeping on the banks of the river. A wide variety of birdlife will also be pointed out by your Zodiac driver/naturalist.

Depending on conditions, Seabourn hopes to get the Zodiacs close to the 80 metre high waterfalls for a refreshing spray to cool you down. The King George Falls Zodiac tour is one of the highlights of the Kimberley region and a wonder of nature.

*Please note: All shore excursions are subject to availability and are weather and conditions permitting.*

**Overnight: Seabourn Pursuit**

**Meals included: Breakfast; Lunch; Dinner**

#### Day 4 Vansittart Bay

**Arrives: 07:00 - Departs: 15:00**

Vansittart Bay is a small remote 30 square kilometre bay, synonymous with the Truscott air base that was operational during the Second World War. The bay features beaches and aircraft wrecks, but the reason for your visit is the Gwion Gwion or Bradshaw art found on Jar Island. Jar Island was named by an early survey team who found clay jars on the island. These jars were the same type as those used by the Macassans who would travel down from (what we know today as) Indonesia to the top end of Australia in search of sea cucumbers.

According to Aboriginal legend, the art was created by birds. It was said that these birds pecked the rocks until their beaks bled, and then created these fine paintings by using a tail feather and their own blood. The bird said responsible was known as Gwion. The Gwion Gwion art is often called Bradshaw art after Joseph Bradshaw, the first European person to record the style of painting in 1891.

#### Included Expedition (No booking required) - Zodiac Landing on Jar Island

This morning head out with the expedition team to explore the uninhabited, Jar Island. From the ship's anchorage position, a short Zodiac ride will bring you ashore for a wet landing onto a perfectly white sandy beach. Once ashore, a short walk of about 250 metres along a flat sandy beach and then on to flat rocks, will bring you to the base of the rock art gallery that depicts the Bradshaw or Gwion Gwion art. After a short scramble over some rocks, you will be at the gallery itself, enjoying a rare glimpse into a fascinating part of history along with a vivid interpretation by the expedition team.

*Please note: All shore excursions are subject to availability and are weather and conditions permitting.*

**Overnight: Seabourn Pursuit**

**Meals included: Breakfast; Lunch; Dinner**







## 13-DAY CRUISE PACKAGE | SEABOURN KIMBERLEY 2027

### The Itinerary

#### Itinerary 2 - 30th June 2027 departure: Darwin to Broome

##### Day 5 Ashmore Reef

Arrives: 08:00 - Departs: 13:00

Ashmore Reef Marine Park is located about 630 kilometres north of Broome and 110 kilometres south of the Indonesian Islands of Rote. The Australian marine park covers an area of 583 square kilometres, including Ashmore Reef. The marine park comprises several marine habitats, including seagrass meadows, intertidal sand flats, coral reef flats, and lagoons, and supports an important and diverse range of species, including 14 species of sea snakes, a population of dugong that may be genetically distinct, a diverse marine invertebrates fauna, and many endemic species, especially of sea snakes and mollusks. The area contains feeding and nesting sites for loggerhead, hawksbill, and green turtles.

**Overnight: Seabourn Pursuit**

**Meals included: Breakfast; Lunch; Dinner**

##### Day 6 The Seabourn Kimberley Experience

Arrives: 07:00 - Departs: 17:00

Imagine waking up to the golden hush of dawn as your ship glides through ancient sandstone gorges, the air thick with the scent of salt and adventure. This is no ordinary day, with no fixed itinerary, the day unfolds like a secret whispered by the land itself. Search for the region's unique wildlife, shy but nimble short-eared wallabies foraging in the cool shadows of the cliffs, and giant saltwater crocodiles silently surveying the mangroves. The Expedition Leader crafts a bespoke adventure, guided by tides, weather, and instinct. This is the Kimberley at its most raw, most real and most unforgettable.

**Overnight: Seabourn Pursuit**

**Meals included: Breakfast; Lunch; Dinner**

##### Day 7 Hunter River

Arrives: 07:00 - Departs: 17:00

The Hunter River was named in 1820 by the explorer Philip Parker King aboard the Mermaid Cutter, while making charts in the area. The river was named after the surgeon on Mermaid, James Hunter. The river is home to a large mangrove estuary, that forms part of Porosus Creek (Crocodile Creek) and home to several bird species, Osprey, Brahminy Kite, and White-tailed Sea eagles.

Mitchell River National Park is one of Kimberley's two national parks. It is about 350 kilometres north-east of Derby, and 270 kilometres north-west of Wyndham. The park of 115,300 hectares lies in some of Australia's most remote and inaccessible





## 13-DAY CRUISE PACKAGE | SEABOURN KIMBERLEY 2027

### The Itinerary

#### Itinerary 2 - 30th June 2027 departure: Darwin to Broome

country and contains some of the region's scenic jewels. The Mitchell Plateau is one of the most scenic and biologically important areas of the State. Small patches of rainforest grow around the margins of the plateau, where they are protected from fire and receive additional moisture.

##### Included Expedition (No booking required) - Zodiac Cruise

Leaving the ship from its anchorage position, start a Zodiac tour of Hunter River, passing first Naturalist Island and then Indian Head (a sandstone headland depicting the head of an Indian). Near the end of Hunter River, turn left down Porosus Creek named aptly after the many saltwater crocodiles that call the area home. Depending on the tide, your Zodiac may head into the mangroves and explore this unique environment, coupled with detailed interpretation of the area. Keep a look out, as sightings of saltwater crocodiles, osprey, White Bellied Sea Eagles and Brahminy Kites are quite common. This is a magnificent Zodiac cruise showcasing one of the Kimberley highlights.

*Please note: All shore excursions are subject to availability and are weather and conditions permitting.*

**Overnight: Seabourn Pursuit**

**Meals included: Breakfast; Lunch; Dinner**

##### **Day 8 Kuri Bay**

**Arrives: 07:00 - Departs: 17:00**

This lovely bay is located in Australia's northwest Kimberley region, some 225 kilometres from the nearest town of Derby. The name springs from the fact that the bay houses Australia's first pearl farm, started in 1956 by Tokiuchi Kuribayashi, who perfected the techniques of cultivating silver-lip pearl oysters in the warm Indian Ocean waters after Australia authorised production of cultured pearls. Today the aquatic farm is operated by the Paspaley company, and at one time produced about 60% of the world's large white South Sea pearls.

The bay is alive with other sea life, including sharks, turtles and huge saltwater crocodiles. It is part of the Prince Regent Nature Reserve, as well as the Kumunya Aboriginal Reserve. The nearby Camden Sound Marine Reserve is the most important humpback whale calving grounds in the world, attracting up to 1,000 whales during the season from October to June. Another famous sight is a multitude of waterfalls created by the huge Montgomery Reef, Australia's largest inshore reef, when the 10-metre tide change creates immense cascades of water off the sides as the reef-top "island" appears above the receding sea. An optional visit to Sheep Island reveals the ruins of a 19th century settlement, along with the graves bearing silent witness to the settler's failure. The rugged cliffs glow red at sunrise and sunset (not included).

*Please note: Optional Seabourn shore excursion or Ventures by Seabourn access only; wheelchair access limited. If not participating in one of these options, no port access will be available.*





## 13-DAY CRUISE PACKAGE | SEABOURN KIMBERLEY 2027

### The Itinerary

#### Itinerary 2 - 30th June 2027 departure: Darwin to Broome

**Overnight: Seabourn Pursuit**

**Meals included: Breakfast; Lunch; Dinner**

##### Day 9 Montgomery Reef / Freshwater Cove

###### Montgomery Reef

**Arrives: 05:30 - Departs: 10:00**

Montgomery Reef is a reef off the Kimberley coast of Western Australia. It is situated at the southwestern end of Camden Sound and surrounds Yawajaba (Montgomery) Island. With its total area of 400 square kilometres it is the world's largest inshore reef. The reef and island were named by Philip Parker King, the first European to sight the island, aboard the HMS Mermaid while exploring the area in 1818. King named the island after the ship's surgeon, Andrew Montgomery.

When the tide is out, vast lagoons, sandstone islets, and a central mangrove island are revealed. The outward movement of the tide forms a torrent of water, creating a river cutting through the reef and hundreds of cascading waterfalls. At low tide, more than 4 metres of reef can be exposed. While the tide is going out, the waterfalls attract migratory wading birds, feeding turtles manta rays, black tipped reef sharks and dugongs.

Included Expedition (No booking required) - Zodiac Cruise

Arriving on high tide, leave the ship and head out by Zodiac to the edge of Montgomery reef. As soon as the tide drops it exposes the "river" a narrow channel you will explore by Zodiac. Witness torrent water and endless cascading waterfalls. As the water drops further, the reef is exposed, and fish are trapped on the reef and in pools. They bring in an array of birdlife. Keep a

look out for the white and grey morph eastern reef egret, ospreys, white bellied sea eagles and more. In the water keep an eye out for sea dugongs, stokes sea snake, tawny nurse sharks and hammerhead sharks. When the tide is out, many turtles are concentrated into the 'river', and over a few hours one can see dozens and dozens of them. They are often found both in the water and stranded on the reef.

###### Freshwater Cove

**Arrive: 11:45 - Depart: 23:59**

Wiggingarra Butt Butt (Freshwater Cove) lies on the mainland adjacent to Montgomery Reef. Named appropriately, as fresh water pours from out of the ground all year round, making this an ideal area for a traditional camp. The area is managed in partnership with the Damibmangari traditional owners, who have strong cultural connections to the Lalang-garram / Camden Sound Marine Park and Montgomery Islands.

**Overnight: Seabourn Pursuit**

**Meals included: Breakfast; Lunch; Dinner**

##### Day 10 Talbot Bay

**Arrives: 02:30 - Departs: 15:00**

Talbot Bay is the site of the Horizontal Waterfalls, that lie about 32 kilometres to the east of Cockatoo Island in the Buccaneer Archipelago. The effect of the waterfalls is created by the rapid tidal fall on the ocean-side of gaps in the sandstone cliffs. Waters on the inland side of the gaps cannot escape fast enough and so a "horizontal waterfall" is created by the cascades, with water levels differing sometimes by several metres on either side of the

Offer available for a limited time or until sold out. TRIP A DEAL PTY LTD: 50149240433

Updated: 08 Jan 2026 15:35:36

Have a question about this deal? We're here to help.  
Call our friendly team on 1300 158 912

13

FREQUENT  
FLYER



Trip  
aDeal





## 13-DAY CRUISE PACKAGE | SEABOURN KIMBERLEY 2027

### The Itinerary

#### Itinerary 2 - 30th June 2027 departure: Darwin to Broome

gaps. The gaps themselves were once layers of siltstone in the strata of the sedimentary rock. It is through these gaps that tide movements push sea water to create the Horizontal Waterfalls.

**Overnight: Seabourn Pursuit**

**Meals included: Breakfast; Lunch; Dinner**

##### Day 11 Lacepede Island

**Arrives: 12:00 - Departs: 17:00**

The Lacepede Islands are a remote and pristine region, located in the Kimberley region of Western Australia. It is renowned for its stunning natural beauty and abundant wildlife. The islands feature rugged coastlines, white sandy beaches, and crystal-clear waters, making it a haven for nature enthusiasts and birdwatchers. Lacepede Islands are particularly famous for nesting seabirds, including the brown booby and the roseate tern. The islands are also an important site for marine life, with coral reefs and diverse fish species in its surrounding waters. The Lacepede Islands offer a unique opportunity to experience the unspoiled beauty of the Kimberley region.

**Overnight: Seabourn Pursuit**

**Meals included: Breakfast; Lunch; Dinner**

##### Day 12 Disembark Broome - Transfer to hotel

**Arrives: 07:00**

After breakfast this morning, disembark to join an arranged transfer to your hotel. Once checked in, the remainder of the day is at leisure.

Perched on the Northwest edge of Western Australia, Broome was once an isolated gem, reachable only by a rugged dirt road until the mid-1980s. The town is nestled on a narrow peninsula, encircled by the crystal-clear sapphire waters of the Indian Ocean and the tranquil expanse of Roebuck Bay. It stands as a global haven for migratory birds, offering them a scenic stopover on their long journeys.

Broome sprang to life following the discovery of the world's most abundant pearl shell deposit. This revelation sparked a frenzy akin to a gold rush, drawing in hundreds of people lured by the promise of precious treasures. Despite a downturn in the pearl industry during the last century, the allure of Broome's natural splendor and serene ambiance held many captives, anchoring them to this coastal sanctuary.

Today, Broome boasts a unique architectural landscape, a testament to its diverse history. A blend of colonial buildings, old mission houses, churches, and the huts of former pearling masters share the streets with more modern homes. These structures collectively echo a distinctive style that took root over eighty years ago.

**Overnight: Seashells Broome, or similar, Broome**

**Meals included: Breakfast**

##### Day 13 Fly home from Broome, Australia

After check out this morning, join an arranged transfer to Broome Airport for your homeward bound flight.

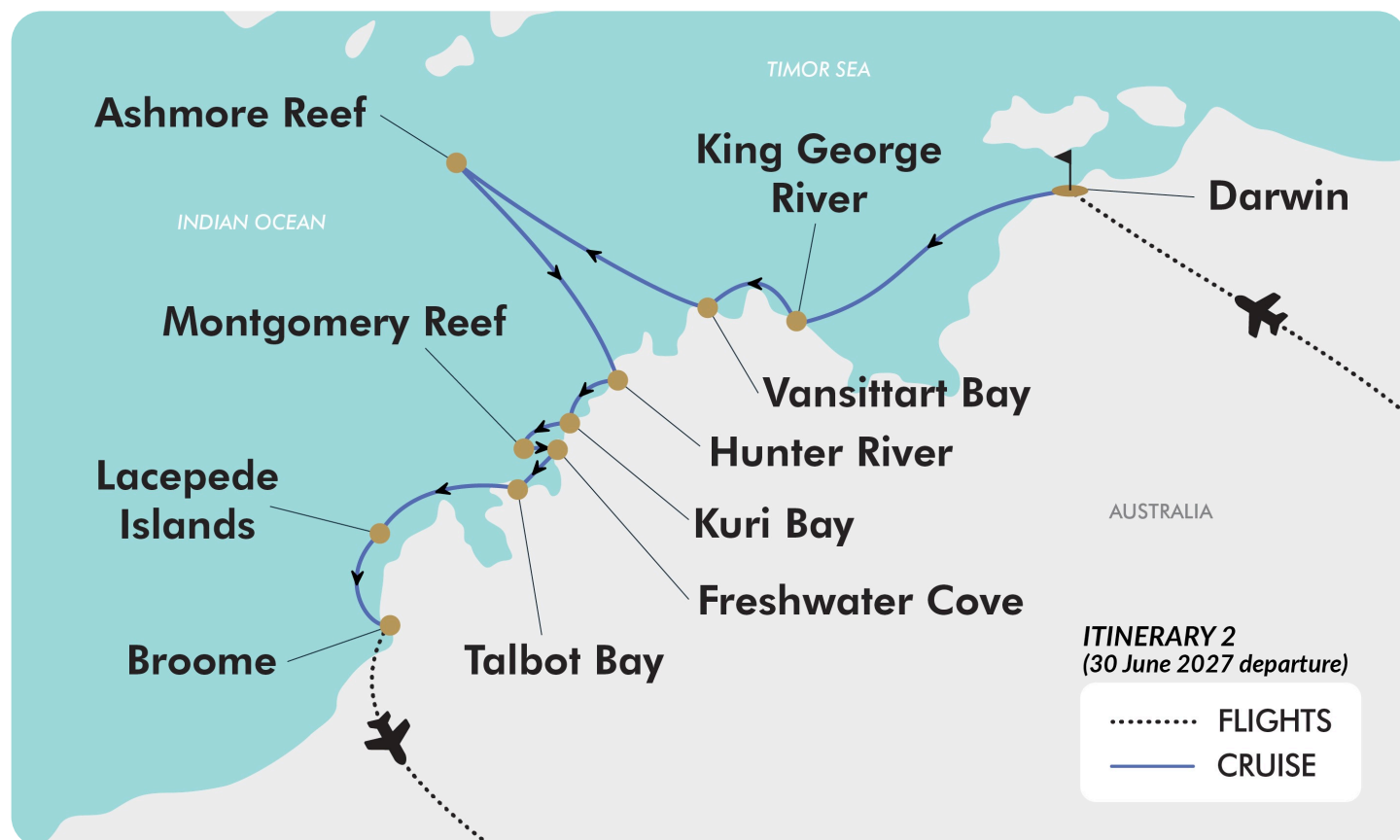




## 13-DAY CRUISE PACKAGE | SEABOURN KIMBERLEY 2027

### The Map

Itinerary 2 - 30th June 2027 departure: Darwin to Broome



Offer available for a limited time or until sold out. TRIP A DEAL PTY LTD: 50149240433

Updated: 08 Jan 2026 15:35:36

Have a question about this deal? We're here to help.  
Call our friendly team on 1300 158 912

15

FREQUENT  
FLYER



Trip  
aDeal





## 13-DAY CRUISE PACKAGE | SEABOURN KIMBERLEY 2027

### The Itinerary

#### Itinerary 3 - 23rd May 2027 departure: Darwin to Broome

##### Day 1 Fly to Darwin, Australia

Today make your own way to the airport for your flight to Darwin, Northern Territory. Upon arrival a transfer is provided to your hotel. Once checked in, the remainder of your day is at leisure.

Capital of the Northern Territory (NT), with an estimated population of 150,000, Darwin is home to most of the Northern Territory population. John Clements Wickham named the region "Port Darwin" in honour of their former shipmate Charles Darwin on the 9th September 1839, when the HMS Beagle sailed into Darwin harbour during its survey of the area. The Darwin region, like much of the Top End, experiences a tropical climate with a wet and dry season and boasts a vibrant multicultural community, where Indigenous heritage blends seamlessly with the influence of diverse international populations. Darwin's rich history provides an incredible background for the diverse cultural and historical activities. Interestingly, the city itself has been rebuilt almost entirely four times, following cyclones and Japanese air raids in World War II.

**Overnight:** DoubleTree by Hilton, or similar, Darwin  
**Meals included:** None

##### Day 2 Darwin - Embark Seabourn Pursuit 10-night Kimberley Expedition

**Departs:** 17:00

After check out this morning a transfer is provided to the Darwin Cruise terminal to embark on the luxury Seabourn Pursuit. Once on board the remainder of the day is at leisure exploring this amazing ship.

##### *Please note:*

- *This Kimberley Expedition itinerary is flexible to take advantage of changing weather and tidal conditions. This itinerary showcases a selection of the key destinations you may visit. The following destinations and their order is subject to change at the discretion of the ship's crew.*
- *Shade is limited on included expeditions; to avoid sunburn, wear light, long clothing suitable for use as a cover-up. Bring a hat and sunglasses; wear biodegradable/reef-safe sunscreen. Bring bottled water. Life jackets are provided and must be worn. Wildlife sightings are likely but are not guaranteed.*

**Overnight:** Seabourn Pursuit  
**Meals included:** Dinner





## 13-DAY CRUISE PACKAGE | SEABOURN KIMBERLEY 2027

### The Itinerary

#### Itinerary 3 - 23rd May 2027 departure: Darwin to Broome

##### Day 3 King George River

Arrives: 12:00 - Departs: 19:00

Explore the King George Falls, the highest twin waterfalls in Australia at 80 metres in height. The river was named in 1911 by explorer Charles Conigrave after a privately funded expedition to the area. The river is named in honour of King George V. This incredible sandstone gorge is a highlight of any Kimberley Expedition.

##### Included Expedition (No booking required) - Zodiac Tour

Join the expedition team and leave the anchorage position in Koolama Bay to head into the entrance of the King George River and falls. The 10 nautical mile Zodiac expedition takes you through a winding sandstone gorge, with incredible honeycomb and vertical erosion. Keep a lookout for Saltwater crocodiles, sleeping on the banks of the river. A wide variety of birdlife will also be pointed out by your Zodiac driver/naturalist.

Depending on conditions, Seabourn hopes to get the Zodiacs close to the 80 metre high waterfalls for a refreshing spray to cool you down. The King George Falls Zodiac tour is one of the highlights of the Kimberley region and a wonder of nature.

*Please note: All shore excursions are subject to availability and are weather and conditions permitting.*

**Overnight: Seabourn Pursuit**

**Meals included: Breakfast; Lunch; Dinner**

##### Day 4 Vansittart Bay

Arrives: 07:00 - Departs: 15:00

Vansittart Bay is a small remote 30 square kilometre bay, synonymous with the Truscott air base that was operational during the Second World War. The bay features beaches and aircraft wrecks, but the reason for your visit is the Gwion Gwion or Bradshaw art found on Jar Island. Jar Island was named by an early survey team who found clay jars on the island. These jars were the same type as those used by the Macassans who would travel down from (what we know today as) Indonesia to the top end of Australia in search of sea cucumbers.

According to Aboriginal legend, the art was created by birds. It was said that these birds pecked the rocks until their beaks bled, and then created these fine paintings by using a tail feather and their own blood. The bird said responsible was known as Gwion. The Gwion Gwion art is often called Bradshaw art after Joseph Bradshaw, the first European person to record the style of painting in 1891.

##### Included Expedition (No booking required) - Zodiac Landing on Jar Island

This morning head out with the expedition team to explore the uninhabited, Jar Island. From the ship's anchorage position, a short Zodiac ride will bring you ashore for a wet landing onto a perfectly white sandy beach. Once ashore, a short walk of about 250 metres along a flat sandy beach and then on to flat rocks, will bring you to the base of the rock art gallery that depicts the Bradshaw or Gwion Gwion art. After a short scramble over some





## 13-DAY CRUISE PACKAGE | SEABOURN KIMBERLEY 2027

### The Itinerary

#### Itinerary 3 - 23rd May 2027 departure: Darwin to Broome

rocks, you will be at the gallery itself, enjoying a rare glimpse into a fascinating part of history along with a vivid interpretation by the expedition team.

*Please note: All shore excursions are subject to availability and are weather and conditions permitting.*

**Overnight: Seabourn Pursuit**

**Meals included: Breakfast; Lunch; Dinner**

##### Day 5 Ashmore Reef

**Arrives: 08:00 - Departs: 13:00**

Ashmore Reef Marine Park is located about 630 kilometres north of Broome and 110 kilometres south of the Indonesian Islands of Rote. The Australian marine park covers an area of 583 square kilometres, including Ashmore Reef. The marine park comprises several marine habitats, including seagrass meadows, intertidal sand flats, coral reef flats, and lagoons, and supports an important and diverse range of species, including 14 species of sea snakes, a population of dugong that may be genetically distinct, a diverse marine invertebrates fauna, and many endemic species, especially of sea snakes and mollusks. The area contains feeding and nesting sites for loggerhead, hawksbill, and green turtles.

**Overnight: Seabourn Pursuit**

**Meals included: Breakfast; Lunch; Dinner**

##### Day 6 The Seabourn Kimberley Experience

**Arrives: 07:00 - Departs: 17:00**

Imagine waking up to the golden hush of dawn as your ship glides through ancient sandstone gorges, the air thick with the scent of salt and adventure. This is no ordinary day, with no fixed itinerary, the day unfolds like a secret whispered by the land itself. Search for the region's unique wildlife, shy but nimble short-eared wallabies foraging in the cool shadows of the cliffs, and giant saltwater crocodiles silently surveying the mangroves. The Expedition Leader crafts a bespoke adventure, guided by tides, weather, and instinct. This is the Kimberley at its most raw, most real and most unforgettable.

**Overnight: Seabourn Pursuit**

**Meals included: Breakfast; Lunch; Dinner**

##### Day 7 Hunter River

**Arrives: 07:00 - Departs: 17:00**

The Hunter River was named in 1820 by the explorer Philip Parker King aboard the Mermaid Cutter, while making charts in the area. The river was named after the surgeon on Mermaid, James Hunter. The river is home to a large mangrove estuary, that forms part of Porosus Creek (Crocodile Creek) and home to several bird species, Osprey, Brahminy Kite, and White-tailed Sea eagles.

Mitchell River National Park is one of Kimberley's two national parks. It is about 350 kilometres north-east of Derby, and 270 kilometres north-west of Wyndham. The park of 115,300 hectares lies in some of Australia's most remote and inaccessible





## 13-DAY CRUISE PACKAGE | SEABOURN KIMBERLEY 2027

### The Itinerary

#### Itinerary 3 - 23rd May 2027 departure: Darwin to Broome

country and contains some of the region's scenic jewels. The Mitchell Plateau is one of the most scenic and biologically important areas of the State. Small patches of rainforest grow around the margins of the plateau, where they are protected from fire and receive additional moisture.

##### Included Expedition (No booking required) - Zodiac Cruise

Leaving the ship from its anchorage position, start a Zodiac tour of Hunter River, passing first Naturalist Island and then Indian Head (a sandstone headland depicting the head of an Indian). Near the end of Hunter River, turn left down Porosus Creek named aptly after the many saltwater crocodiles that call the area home. Depending on the tide, your Zodiac may head into the mangroves and explore this unique environment, coupled with detailed interpretation of the area. Keep a look out, as sightings of saltwater crocodiles, osprey, White Bellied Sea Eagles and Brahminy Kites are quite common. This is a magnificent Zodiac cruise showcasing one of the Kimberley highlights.

*Please note: All shore excursions are subject to availability and are weather and conditions permitting.*

**Overnight: Seabourn Pursuit**

**Meals included: Breakfast; Lunch; Dinner**

##### **Day 8 Kuri Bay**

**Arrives: 07:00 - Departs: 17:00**

This lovely bay is located in Australia's northwest Kimberley region, some 225 kilometres from the nearest town of Derby. The name springs from the fact that the bay houses Australia's first pearl farm, started in 1956 by Tokiuchi Kuribayashi, who perfected the techniques of cultivating silver-lip pearl oysters in the warm Indian Ocean waters after Australia authorised production of cultured pearls. Today the aquatic farm is operated by the Paspaley company, and at one time produced about 60% of the world's large white South Sea pearls.

The bay is alive with other sea life, including sharks, turtles and huge saltwater crocodiles. It is part of the Prince Regent Nature Reserve, as well as the Kumunya Aboriginal Reserve. The nearby Camden Sound Marine Reserve is the most important humpback whale calving grounds in the world, attracting up to 1,000 whales during the season from October to June. Another famous sight is a multitude of waterfalls created by the huge Montgomery Reef, Australia's largest inshore reef, when the 10-metre tide change creates immense cascades of water off the sides as the reef-top "island" appears above the receding sea. An optional visit to Sheep Island reveals the ruins of a 19th century settlement, along with the graves bearing silent witness to the settler's failure. The rugged cliffs glow red at sunrise and sunset (not included).

*Please note: Optional Seabourn shore excursion or Ventures by Seabourn access only; wheelchair access limited. If not participating in one of these options, no port access will be available.*





## 13-DAY CRUISE PACKAGE | SEABOURN KIMBERLEY 2027

### The Itinerary

#### Itinerary 3 - 23rd May 2027 departure: Darwin to Broome

**Overnight: Seabourn Pursuit**

**Meals included: Breakfast; Lunch; Dinner**

##### Day 9 Lacepede Island

**Arrives: 07:00 - Departs: 17:00**

The Lacepede Islands are a remote and pristine region, located in the Kimberley region of Western Australia. It is renowned for its stunning natural beauty and abundant wildlife. The islands feature rugged coastlines, white sandy beaches, and crystal-clear waters, making it a haven for nature enthusiasts and birdwatchers. Lacepede Islands are particularly famous for nesting seabirds, including the brown booby and the roseate tern. The islands are also an important site for marine life, with coral reefs and diverse fish species in its surrounding waters. The Lacepede Islands offer a unique opportunity to experience the unspoiled beauty of the Kimberley region.

**Overnight: Seabourn Pursuit**

**Meals included: Breakfast; Lunch; Dinner**

##### Day 10 Freshwater Cove / Montgomery Reef / Talbot Bay (Overnight)

**Freshwater Cove**

**Arrives: 05:30 - Departs: 11:00**

Wiggingarra Butt Butt (Freshwater Cove) lies on the mainland adjacent to Montgomery Reef. Named appropriately, as fresh water pours from out of the ground all year round, making this an ideal area for a traditional camp. The area is managed in

partnership with the Damibmangari traditional owners, who have strong cultural connections to the Lalang-garram / Camden Sound Marine Park and Montgomery Islands.

##### Montgomery Reef

**Arrives: 12:45 - Departs: 19:30**

Montgomery Reef is a reef off the Kimberley coast of Western Australia. It is situated at the southwestern end of Camden Sound and surrounds Yawajaba (Montgomery) Island. With its total area of 400 square kilometres it is the world's largest inshore reef. The reef and island were named by Philip Parker King, the first European to sight the island, aboard the HMS Mermaid while exploring the area in 1818. King named the island after the ship's surgeon, Andrew Montgomery.

When the tide is out, vast lagoons, sandstone islets, and a central mangrove island are revealed. The outward movement of the tide forms a torrent of water, creating a river cutting through the reef and hundreds of cascading waterfalls. At low tide, more than 4 metres of reef can be exposed. While the tide is going out, the waterfalls attract migratory wading birds, feeding turtles manta rays, black tipped reef sharks and dugongs.

##### Included Expedition (No booking required) - Zodiac Cruise

Arriving on high tide, leave the ship and head out by Zodiac to the edge of Montgomery reef. As soon as the tide drops it exposes the "river" a narrow channel you will explore by Zodiac. Witness torrent water and endless cascading waterfalls. As the water drops further, the reef is exposed, and fish are trapped on the reef and in pools. They bring in an array of birdlife. Keep a







## 13-DAY CRUISE PACKAGE | SEABOURN KIMBERLEY 2027

### The Itinerary

#### Itinerary 3 - 23rd May 2027 departure: Darwin to Broome

look out for the white and grey morph eastern reef egret, ospreys, white bellied sea eagles and more. In the water keep an eye out for see dugongs, stokes sea snake, tawny nurse sharks and hammerhead sharks. When the tide is out, many turtles are concentrated into the 'river', and over a few hours one can see dozens and dozens of them. They are often found both in the water and stranded on the reef.

##### Talbot Bay

**Arrives: 22:30 - Overnight**

Talbot Bay is the site of the Horizontal Waterfalls, which lie about 32 kilometres to the east of Cockatoo Island in the Buccaneer Archipelago.

**Overnight: Seabourn Pursuit**

**Meals included: Breakfast; Lunch; Dinner**

##### Day 11 Talbot Bay

**Departs: 16:00**

Talbot Bay is the site of the Horizontal Waterfalls, that lie about 32 kilometres to the east of Cockatoo Island in the Buccaneer Archipelago. The effect of the waterfalls is created by the rapid tidal fall on the ocean-side of gaps in the sandstone cliffs. Waters on the inland side of the gaps cannot escape fast enough and so a "horizontal waterfall" is created by the cascades, with water levels differing sometimes by several metres on either side of the gaps. The gaps themselves were once layers of siltstone in the strata of the sedimentary rock. It is through these gaps that tide movements push sea water to create the Horizontal Waterfalls.

**Overnight: Seabourn Pursuit**

**Meals included: Breakfast; Lunch; Dinner**

##### Day 12 Disembark Broome - Transfer to hotel

**Arrives: 07:00**

After breakfast this morning, disembark to join an arranged transfer to your hotel. Once checked in, the remainder of the day is at leisure.

Perched on the Northwest edge of Western Australia, Broome was once an isolated gem, reachable only by a rugged dirt road until the mid-1980s. The town is nestled on a narrow peninsula, encircled by the crystal-clear sapphire waters of the Indian Ocean and the tranquil expanse of Roebuck Bay. It stands as a global haven for migratory birds, offering them a scenic stopover on their long journeys.

Broome sprang to life following the discovery of the world's most abundant pearl shell deposit. This revelation sparked a frenzy akin to a gold rush, drawing in hundreds of people lured by the promise of precious treasures. Despite a downturn in the pearl industry during the last century, the allure of Broome's natural splendor and serene ambiance held many captives, anchoring them to this coastal sanctuary.

Today, Broome boasts a unique architectural landscape, a testament to its diverse history. A blend of colonial buildings, old mission houses, churches, and the huts of former pearling masters share the streets with more modern homes. These structures collectively echo a distinctive style that took root over eighty years ago.

Offer available for a limited time or until sold out. TRIP A DEAL PTY LTD: 50149240433

Updated: 08 Jan 2026 15:35:36

Have a question about this deal? We're here to help.  
Call our friendly team on 1300 158 912







## 13-DAY CRUISE PACKAGE | SEABOURN KIMBERLEY 2027

### The Itinerary

#### Itinerary 3 - 23rd May 2027 departure: Darwin to Broome

Overnight: Seashells Broome, or similar, Broome

Meals included: Breakfast

#### Day 13 Fly home from Broome, Australia

After check out this morning, join an arranged transfer to Broome Airport for your homeward bound flight.

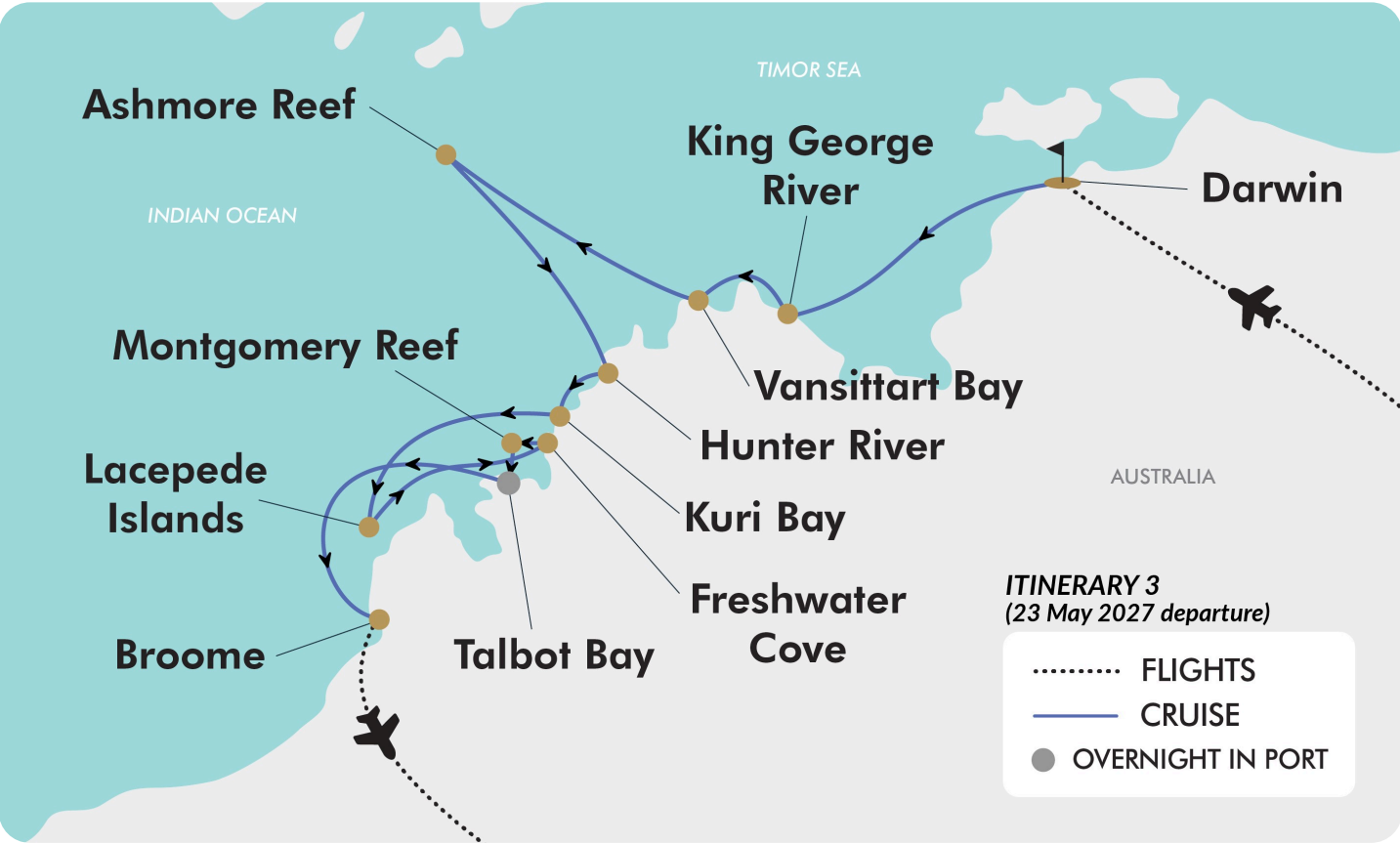




13-DAY CRUISE PACKAGE | SEABOURN KIMBERLEY 2027

The Map

Itinerary 3 - 23rd May 2027 departure: Darwin to Broome



Offer available for a limited time or until sold out. TRIP A DEAL PTY LTD: 50149240433

Updated: 08 Jan 2026 15:35:36





## 13-DAY CRUISE PACKAGE | SEABOURN KIMBERLEY 2027

### The Itinerary

#### Itinerary 4 - 15th August 2027 departure: Broome to Darwin

##### Day 1 Fly to Broome, Australia

Today make your own way to the airport for your flight to Broome, Western Australia. Upon arrival a transfer is provided to your hotel. Once checked in, the remainder of your day is at leisure.

Perched on the Northwest edge of Western Australia, Broome was once an isolated gem, reachable only by a rugged dirt road until the mid-1980s. The town is nestled on a narrow peninsula, encircled by the crystal-clear sapphire waters of the Indian Ocean and the tranquil expanse of Roebuck Bay. It stands as a global haven for migratory birds, offering them a scenic stopover on their long journeys.

Broome sprang to life following the discovery of the world's most abundant pearl shell deposit. This revelation sparked a frenzy akin to a gold rush, drawing in hundreds of people lured by the promise of precious treasures. Despite a downturn in the pearl industry during the last century, the allure of Broome's natural splendor and serene ambiance held many captives, anchoring them to this coastal sanctuary.

Today, Broome boasts a unique architectural landscape, a testament to its diverse history. A blend of colonial buildings, old mission houses, churches, and the huts of former pearling masters share the streets with more modern homes. These structures collectively echo a distinctive style that took root over eighty years ago.

**Overnight:** Seashells Broome, or similar, Broome

**Meals included:** None

##### Day 2 Broome - Embark Seabourn Pursuit 10-night Kimberley Expedition

**Departs:** 18:00

After check out this morning a transfer is provided to the Port of Broome to embark on the luxury Seabourn Pursuit. Once on board the remainder of the day is at leisure exploring this amazing ship.

##### *Please note:*

- *This Kimberley Expedition itinerary is flexible to take advantage of changing weather and tidal conditions. This itinerary showcases a selection of the key destinations you may visit. The following destinations and their order is subject to change at the discretion of the ship's crew.*
- *Shade is limited on included expeditions; to avoid sunburn, wear light, long clothing suitable for use as a cover-up. Bring a hat and sunglasses; wear biodegradable/reef-safe sunscreen. Bring bottled water. Life jackets are provided and must be worn. Wildlife sightings are likely but are not guaranteed.*

**Overnight:** Seabourn Pursuit

**Meals included:** Dinner





## 13-DAY CRUISE PACKAGE | SEABOURN KIMBERLEY 2027

### The Itinerary

#### Itinerary 4 - 15th August 2027 departure: Broome to Darwin

##### Day 3 Whirlpool Passage

Arrives: 09:00 - Departs: 17:00

Navigate the swirling waters of Whirlpool Passage, a narrow channel in the Buccaneer Archipelago known for its powerful tidal currents. Surrounded by red rock cliffs and turquoise seas, this natural phenomenon offers thrilling Zodiac cruising and a glimpse into Australia's wild Kimberley coast. This is a great location for spotting wildlife like white-bellied sea eagles and ospreys.

**Overnight: Seabourn Pursuit**

**Meals included: Breakfast; Lunch; Dinner**

##### Day 4 Talbot Bay

Arrives: 03:45 - Departs: 03:00 (the following day)

Talbot Bay is the site of the Horizontal Waterfalls, that lie about 32 kilometres to the east of Cockatoo Island in the Buccaneer Archipelago. The effect of the waterfalls is created by the rapid tidal fall on the ocean-side of gaps in the sandstone cliffs. Waters on the inland side of the gaps cannot escape fast enough and so a "horizontal waterfall" is created by the cascades, with water levels differing sometimes by several metres on either side of the gaps. The gaps themselves were once layers of siltstone in the strata of the sedimentary rock. It is through these gaps that tide movements push sea water to create the Horizontal Waterfalls.

**Overnight: Seabourn Pursuit**

**Meals included: Breakfast; Lunch; Dinner**

##### Day 5 Montgomery Reef / Freshwater Cove

Montgomery Reef

Arrives: 06:00 - Departs: 11:00

Montgomery Reef is a reef off the Kimberley coast of Western Australia. It is situated at the southwestern end of Camden Sound and surrounds Yawajaba (Montgomery) Island. With its total area of 400 square kilometres it is the world's largest inshore reef. The reef and island were named by Philip Parker King, the first European to sight the island, aboard the HMS Mermaid while exploring the area in 1818. King named the island after the ship's surgeon, Andrew Montgomery.

When the tide is out, vast lagoons, sandstone islets, and a central mangrove island are revealed. The outward movement of the tide forms a torrent of water, creating a river cutting through the reef and hundreds of cascading waterfalls. At low tide, more than 4 metres of reef can be exposed. While the tide is going out, the waterfalls attract migratory wading birds, feeding turtles manta rays, black tipped reef sharks and dugongs.

##### Included Expedition (No booking required) - Zodiac Cruise

Arriving on high tide, leave the ship and head out by Zodiac to the edge of Montgomery reef. As soon as the tide drops it exposes the "river" a narrow channel you will explore by Zodiac. Witness torrent water and endless cascading waterfalls. As the water drops further, the reef is exposed, and fish are trapped on the reef and in pools. They bring in an array of birdlife. Keep a look out for the white and grey morph eastern reef egret, ospreys, white bellied sea eagles and more. In the water keep an eye out for see dugongs, stokes sea snake, tawny nurse sharks





## 13-DAY CRUISE PACKAGE | SEABOURN KIMBERLEY 2027

### The Itinerary

#### Itinerary 4 - 15th August 2027 departure: Broome to Darwin

and hammerhead sharks. When the tide is out, many turtles are concentrated into the 'river', and over a few hours one can see dozens and dozens of them. They are often found both in the water and stranded on the reef.

##### Freshwater Cove

**Arrive: 12:45 - Depart: 18:00**

Wiggingarra Butt Butt (Freshwater Cove) lies on the mainland adjacent to Montgomery Reef. Named appropriately, as fresh water pours from out of the ground all year round, making this an ideal area for a traditional camp. The area is managed in partnership with the Damibmangari traditional owners, who have strong cultural connections to the Lalang-garram / Camden Sound Marine Park and Montgomery Islands.

**Overnight: Seabourn Pursuit**

**Meals included: Breakfast; Lunch; Dinner**

##### Day 6 Kuri Bay

**Arrives: 07:00 - Departs: 17:00**

This lovely bay is located in the remote fjordlands of Australia's northwest Kimberley region, some 225 kilometres from the nearest town of Derby. The name springs from the fact that the bay houses Australia's first pearl farm, started in 1956 by Tokiuchi Kuribayashi, who perfected the techniques of cultivating silver-lip pearl oysters in the warm Indian Ocean waters after Australia authorised production of cultured pearls. Today the aquatic farm is operated by the Paspaley company, and at one time produced about 60% of the world's large white South Sea pearls.

The bay is alive with other sea life, including sharks, turtles and huge saltwater crocodiles. It is part of the Prince Regent Nature Reserve, as well as the Kumunya Aboriginal Reserve. The nearby Camden Sound Marine Reserve is the most important humpback whale calving grounds in the world, attracting up to 1,000 whales during the season from October to June. Another famous sight is a multitude of waterfalls created by the huge Montgomery Reef, Australia's largest inshore reef, when the 10-metre tide change creates immense cascades of water off the sides as the reef-top "island" appears above the receding sea. An optional visit to Sheep Island reveals the ruins of a 19th century settlement, along with the graves bearing silent witness to the settler's failure. The rugged cliffs glow red at sunrise and sunset (not included).

*Please note: Optional Seabourn shore excursion or Ventures by Seabourn access only; wheelchair access limited. If not participating in one of these options, no port access will be available.*

**Overnight: Seabourn Pursuit**

**Meals included: Breakfast; Lunch; Dinner**

##### Day 7 Hunter River

**Arrives: 07:00 - Departs: 17:00**

The Hunter River was named in 1820 by the explorer Philip Parker King aboard the Mermaid Cutter, while making charts in the area. The river was named after the surgeon on Mermaid, James Hunter. The river is home to a large mangrove estuary, that forms part of Porosus Creek (Crocodile Creek) and home to several bird species, Osprey, Brahminy Kite, and White-tailed Sea eagles.

Offer available for a limited time or until sold out. TRIP A DEAL PTY LTD: 50149240433

Updated: 08 Jan 2026 15:35:36

Have a question about this deal? We're here to help.  
Call our friendly team on 1300 158 912





## 13-DAY CRUISE PACKAGE | SEABOURN KIMBERLEY 2027

### The Itinerary

#### Itinerary 4 - 15th August 2027 departure: Broome to Darwin

Mitchell River National Park is one of Kimberley's two national parks. It is about 350 kilometres north-east of Derby, and 270 kilometres north-west of Wyndham. The park of 115,300 hectares lies in some of Australia's most remote and inaccessible country and contains some of the region's scenic jewels. The Mitchell Plateau is one of the most scenic and biologically important areas of the State. Small patches of rainforest grow around the margins of the plateau, where they are protected from fire and receive additional moisture.

##### Included Expedition (No booking required) - Zodiac Cruise

Leaving the ship from its anchorage position, start a Zodiac tour of Hunter River, passing first Naturalist Island and then Indian Head (a sandstone headland depicting the head of an Indian). Near the end of Hunter River, turn left down Porosus Creek named aptly after the many saltwater crocodiles that call the area home. Depending on the tide, your Zodiac may head into the mangroves and explore this unique environment, coupled with detailed interpretation of the area. Keep a look out, as sightings of saltwater crocodiles, osprey, White Bellied Sea Eagles and Brahminy Kites are quite common. This is a magnificent Zodiac cruise showcasing one of the Kimberley highlights.

*Please note: All shore excursions are subject to availability and are weather and conditions permitting.*

##### **Overnight: Seabourn Pursuit**

**Meals included: Breakfast; Lunch; Dinner**

##### **Day 8 Ashmore Reef**

**Arrives: 08:00 - Departs: 13:00**

Ashmore Reef Marine Park is located about 630 kilometres north of Broome and 110 kilometres south of the Indonesian Islands of Rote. The Australian marine park covers an area of 583 square kilometres, including Ashmore Reef. The marine park comprises several marine habitats, including seagrass meadows, intertidal sand flats, coral reef flats, and lagoons, and supports an important and diverse range of species, including 14 species of sea snakes, a population of dugong that may be genetically distinct, a diverse marine invertebrates fauna, and many endemic species, especially of sea snakes and mollusks. The area contains feeding and nesting sites for loggerhead, hawksbill, and green turtles.

##### **Overnight: Seabourn Pursuit**

**Meals included: Breakfast; Lunch; Dinner**

##### **Day 9 Vansittart Bay**

**Arrives: 09:00 - Departs: 17:00**

Vansittart Bay is a small remote 30 square kilometre bay, synonymous with the Truscott air base that was operational during the Second World War. The bay features beaches and aircraft wrecks, but the reason for your visit is the Gwion Gwion or Bradshaw art found on Jar Island. Jar Island was named by an early survey team who found clay jars on the island. These jars were the same type as those used by the Macassans who would travel down from (what we know today as) Indonesia to the top end of Australia in search of sea cucumbers.





## 13-DAY CRUISE PACKAGE | SEABOURN KIMBERLEY 2027

### The Itinerary

#### Itinerary 4 - 15th August 2027 departure: Broome to Darwin

According to Aboriginal legend, the art was created by birds. It was said that these birds pecked the rocks until their beaks bled, and then created these fine paintings by using a tail feather and their own blood. The bird said responsible was known as Gwion. The Gwion Gwion art is often called Bradshaw art after Joseph Bradshaw, the first European person to record the style of painting in 1891.

Included Expedition (No booking required) - Zodiac Landing on Jar Island

This morning head out with the expedition team to explore the uninhabited, Jar Island. From the ship's anchorage position, a short Zodiac ride will bring you ashore for a wet landing onto a perfectly white sandy beach. Once ashore, a short walk of about 250 metres along a flat sandy beach and then on to flat rocks, will bring you to the base of the rock art gallery that depicts the Bradshaw or Gwion Gwion art. After a short scramble over some rocks, you will be at the gallery itself, enjoying a rare glimpse into a fascinating part of history along with a vivid interpretation by the expedition team.

*Please note: All shore excursions are subject to availability and are weather and conditions permitting.*

**Overnight: Seabourn Pursuit**

**Meals included: Breakfast; Lunch; Dinner**

#### Day 10 King George River

**Arrives: 07:00 - Departs: 17:00**

Explore the King George Falls, the highest twin waterfalls in Australia at 80 metres in height. The river was named in 1911 by explorer Charles Conigrave after a privately funded expedition to the area. The river is named in honour of King George V. This incredible sandstone gorge is a highlight of any Kimberley Expedition.

Included Expedition (No booking required) - Zodiac Tour

Join the expedition team and leave the anchorage position in Koolama Bay to head into the entrance of the King George River and falls. The 10 nautical mile Zodiac expedition takes you through a winding sandstone gorge, with incredible honeycomb and vertical erosion. Keep a lookout for Saltwater crocodiles, sleeping on the banks of the river. A wide variety of birdlife will also be pointed out by your Zodiac driver/naturalist.

Depending on conditions, Seabourn hopes to get the Zodiacs close to the 80 metre high waterfalls for a refreshing spray to cool you down. The King George Falls Zodiac tour is one of the highlights of the Kimberley region and a wonder of nature.

*Please note: All shore excursions are subject to availability and are weather and conditions permitting.*

**Overnight: Seabourn Pursuit**

**Meals included: Breakfast; Lunch; Dinner**





## 13-DAY CRUISE PACKAGE | SEABOURN KIMBERLEY 2027

### The Itinerary

#### Itinerary 4 - 15th August 2027 departure: Broome to Darwin

##### Day 11 Darwin (Overnight)

Arrives: 18:00

Capital of the Northern Territory (NT), with an estimated population of 150,000, Darwin is home to most of the Northern Territory population. John Clements Wickham named the region "Port Darwin" in honour of their former shipmate Charles Darwin on the 9th September 1839, when the HMS Beagle sailed into Darwin harbour during its survey of the area. The Darwin region, like much of the Top End, experiences a tropical climate with a wet and dry season and boasts a vibrant multicultural community, where Indigenous heritage blends seamlessly with the influence of diverse international populations. Darwin's rich history provides an incredible background for the diverse cultural and historical activities. Interestingly, the city itself has been rebuilt almost entirely four times, following cyclones and Japanese air raids in World War II.

**Overnight:** Seabourn Pursuit

**Meals included:** Breakfast; Lunch; Dinner

##### Day 12 Disembark Darwin - Transfer to hotel

After breakfast this morning, disembark to join an arranged transfer to your hotel. Once checked in, the remainder of the day is at leisure.

**Overnight:** DoubleTree by Hilton, or similar, Darwin

**Meals included:** Breakfast

##### Day 13 Fly home from Darwin, Australia

After check out this morning, join an arranged transfer to the airport for your homeward bound flight.

Offer available for a limited time or until sold out. TRIP A DEAL PTY LTD: 50149240433

Updated: 08 Jan 2026 15:35:36

Have a question about this deal? We're here to help.  
Call our friendly team on 1300 158 912



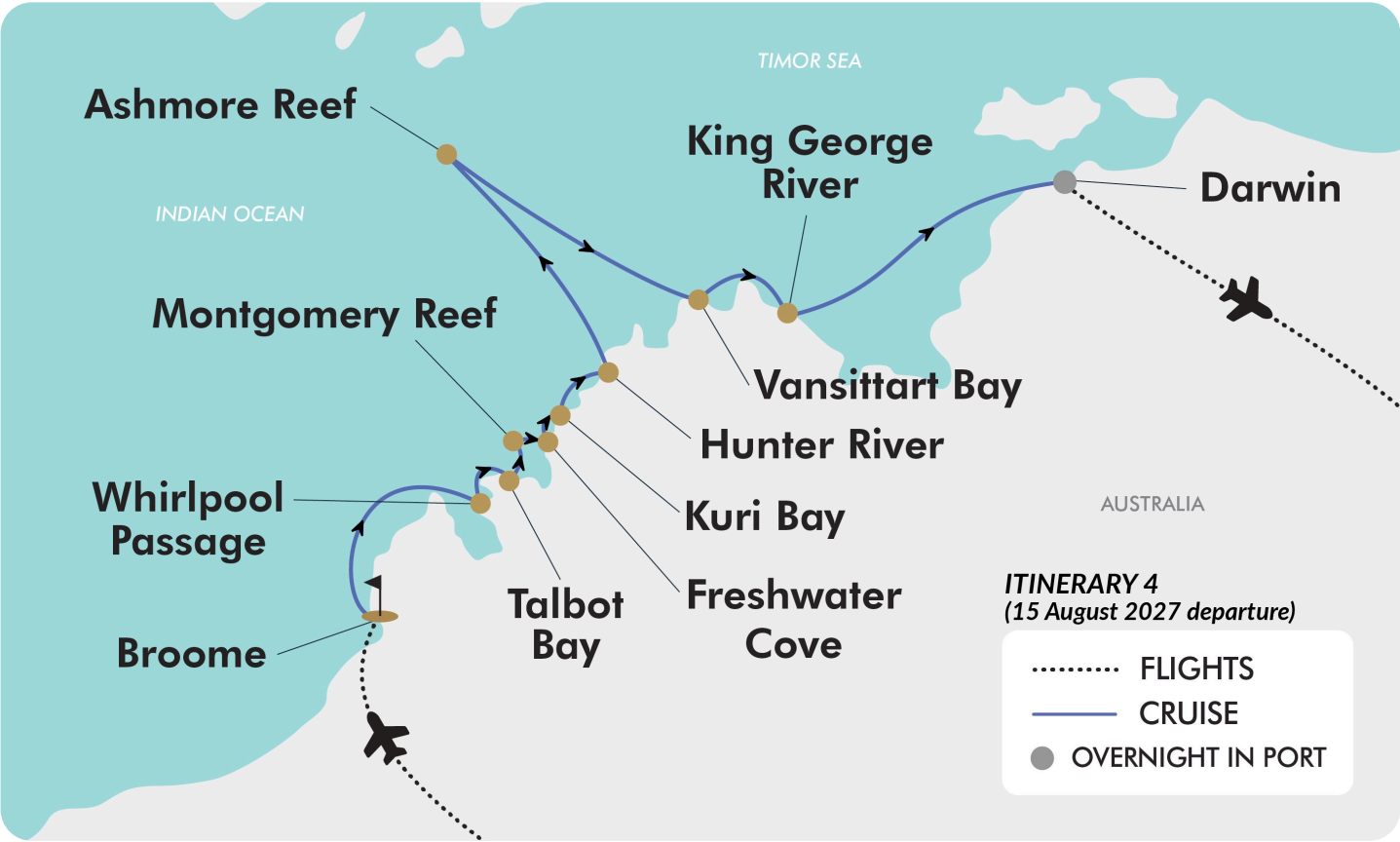




13-DAY CRUISE PACKAGE | SEABOURN KIMBERLEY 2027

# The Map

Itinerary 4 - 15th August 2027 departure: Broome to Darwin



Offer available for a limited time or until sold out. TRIP A DEAL PTY LTD: 50149240433 Updated: 08 Jan 2026 15:35:36





13-DAY CRUISE PACKAGE | SEABOURN KIMBERLEY 2027

Tour Inclusions

HIGHLIGHTS

- Experience one of the world's last wild frontiers from rugged sandstone peaks to gushing waterfalls with Seabourn
- Cruise with the expedition team on a Zodiac exploring King George Falls
- Feel the spray of King George Falls, immersing you in this unique corner of the world (conditions permitting)
- Enjoy a Zodiac landing on Jar Island to discover indigenous Gwion artwork
- Discover the unexpected in the heart of this diverse landscape on the stunning Seabourn Pursuit
- See the world's largest inshore reef, Montgomery Reef, a great natural wonder
- Look out for incredible marine wildlife aboard a zodiac, including dolphins, octopus, fish, reef sharks, turtles, sea snakes and more

FLIGHTS

- Return domestic (or international where applicable) flights (economy class), surcharges may apply

CRUISE

- Enjoy a 10-night luxury Seabourn Kimberley expedition cruise
- Zodiac excursions, including a guided landing, Zodiac cruising and more
- Complimentary premium spirits and fine wines available on board at all times
- Complimentary caviar, an extra indulgence offered throughout your voyage
- World-class dining and culinary experiences that rival the finest restaurants anywhere
- All dining venues are complimentary, dine where, when and with whom you wish
- Welcome champagne and complimentary in-suite bar stocked with your preferences
- Tipping is neither required, nor expected
- Complimentary Wi-Fi packages with unlimited minutes powered by SpaceX's Starlink
- Daily recaps and briefings

ACCOMMODATION

- Overnight 4-star accommodation in Darwin
- Overnight 4-star accommodation in Broome

DINING

- Enjoy 29 meals while cruising
- Complimentary premium spirits and fine wines available while cruising
- Choice of world-class dining and culinary experiences that rival the finest restaurants anywhere, while cruising





13-DAY CRUISE PACKAGE | SEABOURN KIMBERLEY 2027

Tour Inclusions

ESSENTIALS

Port charges and taxes
Airline taxes and surcharges

TRANSFERS

Day 1: Airport to hotel
Day 2: Hotel to port
Day 12: Port to hotel
Day 13: Hotel to airport



# Important Information

*\*Please note: All information provided in this brochure is subject to both change and availability. Prior to purchase please check the current deal for up-to-date information. If you have already purchased this deal, the terms and conditions on your Purchase Confirmation apply and take precedence over the information in this brochure.*

## Booking Information

After purchase, you will receive a receipt and a Purchase Confirmation, directing you to an online Passenger Information Form. You must complete the Passenger Information Form within 72 hours of purchase.

Any special requests, preferences and optional extras MUST be clearly stated in your Passenger Information Form. Any change requested after submitting your Passenger Information Form cannot be guaranteed, is strictly subject to availability and will incur surcharges as outlined in the Schedule of Fees below.

*Please note: All countries and territories have different entry requirements in relation to vaccinations, quarantine/isolation periods and travel restrictions. Due to the evolving nature, we would ask all of our customers to monitor, meet and adhere to the specific requirements of their intended destination(s) in the lead-up to and immediately before travel, as well as any requirements post-travel upon their return.*

## Our Policies

### Cancellation and Refund Policy

By placing a booking with us, you acknowledge the following important information:

- **we act as your booking agent;** TripADeal is a booking services provider, and curates the Travel Offers available on our website. We act as your booking agent, and we receive payment for the Booking Services as part of the booking price, however, we do not provide any of the Travel Services (flights, accommodation, tours or other products or services) included in your booking – the Travel Services are provided by a number of third party Travel Suppliers.

- **each booking is unique;** our Travel Offers are made up of a variety of different components and are, during the booking process, uniquely tailored to suit your requirements, for example, departure dates and ports, flight and room upgrades, tour inclusions, etc.

- **changes/modifications to your booking may not be possible;** once your booking has been made, changes or modifications may not be possible, and where possible, may incur a fee. It is important to ensure that the information you provide during the booking process is accurate and up to date, and that you read the Travel Offer carefully before placing your order.

- **Travel Offers are a package;** our Travel Offers have been curated into package offerings and must be used as a package – individual components cannot be used independently of the full package offering.

- **our Travel Offers are generally non-refundable;** in order to provide great value Travel Offers, we work with a variety of Travel Suppliers to find the best deals – this often means the Travel Suppliers' offerings are non-refundable to ensure the best price. We recommend that you obtain travel insurance as soon as you make a booking with us.

To read more about our Cancellation and Refund Policy, please [click here](#).

### General Terms and Conditions

By placing your booking with us, you acknowledge and agree to our [Terms & Conditions](#), [Privacy Policy](#) and [Cancellation Policy](#).

## Offer Essentials

This Travel Offer is valid for travel on selected dates until the 15th August 2027. This Travel Offer is priced per person based on a twin share.

### Departure Dates & Surcharges

See checkout for live dates and availability.

### Single Traveller Supplement

For solo travellers, a mandatory single

supplement applies:

#### Itinerary 1 & 2:

V1 Veranda Suite: \$14,500  
V2 Veranda Suite: \$15,500  
V3 Veranda Suite: \$17,000  
V4 Veranda Suite: \$17,500  
Penthouse Suite: \$18,000

#### Itinerary 3 & 4:

V1 Veranda Suite: \$17,000  
V2 Veranda Suite: \$18,000  
V3 Veranda Suite: \$19,000  
V4 Veranda Suite: \$20,000  
Penthouse Suite: \$21,000

*Please note: Accommodation for single customers who are travelling on a tour or cruise package may be in a single room, depending on availability.*

### Age Policy

Seabourn requires at least one traveller in each cabin to be over the age of 21.

### Child Policy

- No child discounts are offered. The full price applies to all children travelling with their parents.
- Valid for children 6 years old and over.

*Please note: Children must be accompanied by a responsible adult 21 years old and over to travel. No unaccompanied minors are allowed.*

## Flights

### Departure Cities

Sydney, Melbourne, \*Brisbane, \*Adelaide, Perth, \*Auckland

### Departure City Surcharges

Brisbane: \$100 per person  
Adelaide: \$100 per person  
Auckland: \$400 per person

### Domestic (Or International Where Applicable) Flight(s)

Full-service airline(s) used

- Cabin Class: Economy Class

*Please note: We cannot accommodate one-way flights. Travellers must take all included flights within the package, and any flights*



# Important Information

*intentionally forfeited will result in later flights being subject to cancellation.*

*Please note:*

- *From Sydney, Melbourne or Brisbane the flying journey to your destination may take up to 10 hours, with up to 1 stop.*
- *From Adelaide or Perth the flying journey to your destination may take up to 8 hours, with up to 1 stop.*
- *From Auckland the flying journey to your destination may take up to 16 hours, with up to 1 stop.*

This is provided as a guide only - actual flight duration can vary depending on availability and airline schedules. Your booking's final details will be confirmed to you via email once available.

## Domestic Flight Information

Baggage allowance per person  
1 x 23kg of checked baggage

## Preferred Airline Surcharge

- Cabin Class: Economy Class
- Qantas: \$300 per person

*Please note:*

- *Preferred airlines are subject to availability. If we are unable to fulfil your request, the above extra cost will be refunded.*
- *On any upgrade purchase, short-haul flights and domestic flight sectors are not guaranteed.*
- *In the event that a purchased stopover package and a purchased preferred airline upgrade are not compatible, you will have the option to receive a refund for the preferred airline upgrade or be offered an alternative stopover city option, e.g if you choose to fly with Singapore Airlines you cannot stopover in Dubai.*
- *Preferred airline refers to the marketing carrier and could include codeshare partners.*

## Arrive Early and Stay Behind Options

Fly out and return home up to 60 days pre and post your tour dates.

### Arrive Early

Darwin, Australia (Itinerary 1, 2 & 3) - From

\$300 per person, subject to availability.  
Broome, Australia (Itinerary 4) - From \$300 per person, subject to availability.

### Stay Behind

Broome, Australia (Itinerary 1, 2 & 3) - From \$300 per person, subject to availability.  
Darwin, Australia (Itinerary 4) - From \$300 per person, subject to availability.

*Please note:*

This option incurs a fee for adjusting the departure or return dates. This fee does not include extra nights' accommodation, meals and/or airport transfers, which will be at your own cost.

In addition, airport transfers listed as an inclusion on the Travel Offer are considered void in the event that you select an Arrive Early/Stay Behind option. As such, you will need to arrange your own transfers at your cost.

We strongly advise against booking any pre or post-tour travel arrangements/accommodation until TripADeal confirms your flight details. If you choose to book before confirmation, we recommend opting for refundable reservations or having backup plans in case the tour does not proceed.

## Internal Flights:

If you select to Arrive Early or Stay Behind into a city other than the one where the tour begins or concludes (where applicable), the package will include an internal flight to your destination. This offer applies only to the cities listed in our Arrive Early & Stay Behind Options. If you wish to forfeit this flight, please advise our friendly team at the time of purchase. Please note that the package's cost does not change when you choose to forfeit your connecting flight.

*Please note: If you request to fly into cities not listed in our "Arrive Early & Stay Behind Options", we may be able to customise your itinerary. If possible, the flight's cost will be charged as an extra.*

## Cancellations & Changes:

Flight booking changes or cancellations

after air tickets have been issued are not guaranteed and may incur additional fees and fare difference, subject to the airline cancellation and change policies. Flight changes are subject to availability at the time of booking.

## High-Season:

A high-season Arrive Early or Stay Behind can be purchased for an additional charge, subject to availability. For pricing, please refer to the cart.

## + 60 days:

You can fly out up to 60 days before your package's start date, and/or return home 60 days after your package's end date. Should you wish to fly out or return home for more than 60 days from the tour, please contact us to request availability. Additional costs may apply.

## Estimated dates:

Your estimated departure, return, and arrival dates are all subject to availability and may vary. The confirmed schedule for all flights will be provided when you receive your flight tickets.

High season surcharges apply to flights departing between the below date ranges:

- 19th December 2026 - 3rd January 2027
- 4th January 2027 - 26th January 2027
- 19th March 2027 - 28th April 2027
- 19th June 2027 - 18th July 2027
- 11th September 2027 - 10th October 2027
- 10th December 2027 - 19th December 2027
- 20th December 2027 - 3rd January 2028
- 4th January 2028 - 31st January 2028
- 1st April 2028 - 30th April 2028
- 1st July 2028 - 23rd July 2028
- 16th September 2028 - 15th October 2028
- 9th December 2028 - 19th December 2028
- 20th December 2028 - 3rd January 2029

## Stopover Packages

Not available.

## Flight Class Upgrades

Business Class: For pricing, please refer to the payment cart at checkout.



# Important Information

## Please note:

- *Flight upgrades are subject to availability and pricing changes (if we cannot fulfil your request, the upgrade cost will be refunded).*
- *On any upgrade purchase, short-haul flights and domestic flight sectors are not guaranteed.*

## Outbound Flights

*Please note: Due to flight scheduling and availability, some departures may occur on Day 0. Affected customers must be available to depart the day before. Flight times will be indicated on your final documents, issued 4-6 weeks before departure.*

## Missed Flights

If you fail to arrive for your outbound flight, you risk all flight and land arrangements in your destination being automatically cancelled by the airlines and land operator, respectively. Additional fees may apply to reinstate these services. If you miss your flight for whatever reason, please contact us as soon as possible to make arrangements.

## Cruise

### Seabourn Pursuit

Seabourn Pursuit is a marvel of modern luxury travel, designed to reach the most remote and coveted destinations worldwide. Constructed to PC6 Polar Class standards, it boasts cutting-edge hardware and technology for seamless operation in diverse environments. Equipped with two custom-built submarines, 24 Zodiacs, kayaks, and a 24-person Expedition Team, guests can engage in up-close wildlife encounters and enriching cultural experiences. Luxurious public and enrichment spaces, designed by renowned designer Adam D. Tihany, offer unparalleled comfort and elegance. Dining aboard Seabourn Pursuit is a culinary delight, with round-the-clock complimentary options from luxurious restaurants like The Restaurant, The Colonnade, Earth & Ocean and Sushi in the Club. Indulge in complimentary premium spirits, fine wines, and caviar, enhancing

the onboard experience. Stay connected with complimentary Wi-Fi powered by SpaceX's Starlink.

Experience once-in-a-lifetime adventures with inclusive zodiac tours. Wildlife sightings abound, complemented by onboard narration and insights from the Expedition Team. With inspiring enrichment programs and special guest speakers, Seabourn Pursuit promises an unforgettable journey of discovery and luxury.

### Onboard Currency

\$ USD

### Complimentary Use

- Water bottle
- Trekking poles
- Binoculars

### Recommended items

#### Clothing

- Performance shirts and pants: Short sleeve and long sleeve shirts, pants and shorts made of performance fabrics. These should breathe, dry quickly and protect you from the strong sun.

### Accessories

- Trail/Walking shoes or sandals: Comfortable, protective footwear with excellent traction. Recommended closed toe protection.
- Sun hat: Wide-brimmed and breathable.
- Backpack: Lightweight, waterproof backpack for carrying and protecting your items as you go ashore. If you have camera equipment, pack them in seal-proof, waterproof sacks and cases, then carry them all in a waterproof pack.
- Waterproof sacks and cases: Heavy-duty sacks and cases specifically designed to store and protect your phone, camera, film, binoculars and more.

### Gear

- Sunglasses with U.V. filter protection
- Sunscreen
- Lip balm
- Sunscreen

## Cabins

### V1 Veranda Suite (Located on deck 5)

Approximate total space: 33m<sup>2</sup> including a veranda of 7m<sup>2</sup>

Suites on Seabourn Venture feature a comfortable living area; private veranda; queen-size bed or two twin beds; extra-large walk-in closet for expedition gear; personal safe; interactive flat-screen TV with music and movies; fully stocked bar and refrigerator; writing desk with personalised stationery; makeup vanity; spacious bathroom with double vanities, tub and shower, plush robes, slippers, hairdryer and 110/220V AC outlets.

### V2 Veranda Suite (Located on decks 6 & 7)

Approximate total space: 33m<sup>2</sup> including a veranda of 7m<sup>2</sup>

Suites on Seabourn Venture feature a comfortable living area; private veranda; queen-size bed or two twin beds; extra-large walk-in closet for expedition gear; personal safe; interactive flat-screen TV with music and movies; fully stocked bar and refrigerator; writing desk with personalised stationery; makeup vanity; spacious bathroom with double vanities, tub and shower, plush robes, slippers, hairdryer and 110/220V AC outlets.

### V3 Veranda Suite (Located on decks 5 & 6)

Approximate total space: 33m<sup>2</sup> including a veranda of 7m<sup>2</sup>

Suites on Seabourn Venture feature a comfortable living area; private veranda; queen-size bed or two twin beds; extra-large walk-in closet for expedition gear; personal safe; interactive flat-screen TV with music and movies; fully stocked bar and refrigerator; writing desk with personalised stationery; makeup vanity; spacious bathroom with double vanities, tub and shower, plush robes, slippers, hairdryer and 110/220V AC outlets.

### V4 Veranda Suite (Located on decks 7 & 8)

Approximate total space: 33m<sup>2</sup> including a veranda of 7m<sup>2</sup>

Suites on Seabourn Venture feature a comfortable living area; private veranda;



# Important Information

queen-size bed or two twin beds; extra-large walk-in closet for expedition gear; personal safe; interactive flat-screen TV with music and movies; fully stocked bar and refrigerator; writing desk with personalised stationery; makeup vanity; spacious bathroom with double vanities, tub and shower, plush robes, slippers, hairdryer and 110/220V AC outlets.

## PH Penthouse Suite (Located on deck 7 & 8)

Approximately 49m<sup>2</sup> including veranda of 9m<sup>2</sup>

All Penthouse Suites feature a comfortable living area; private veranda; queen-size bed or two twin beds; walk-in closet; personal safe; interactive TV with music and movies; fully stocked bar and refrigerator; writing desk with personalised stationery; makeup vanity; spacious bathroom, separate tub and shower, plush robes, slippers, luxury health and beauty products, hairdryer and 110/220V AC outlets.

### *Please note:*

- All cabins are subject to availability; some cabins may have restricted views.
- Cruise cabins are booked on a guaranteed basis and are assigned by the cruise line prior to departure.

### **Cruise Arrival and Departure Times:**

Please keep in mind that the provided cruise arrival and departure times are an approximate and will be finalised upon receipt of your cruise tickets.

## Accommodation

### **Accommodation Used:**

#### 4-Star Properties (Self-Rated)

Darwin, Australia: Doubletree by Hilton  
Broome, Australia: Seashells Broome

*Please note: Accommodation/rooms offered are based on a lead-in room type and are subject to availability based on seasonality. In the instance a property is not available, a similar standard of accommodation will be provided. Properties will be confirmed and*

*included in your travel pack, which you will receive 4-6 weeks before travel.*

### **Extra Nights**

Not available.

*Please note: If you are interested in booking additional nights of accommodation pre or post-tour, please wait until you receive your travel documentation approximately 4-6 weeks before departure for the confirmed list of hotels. If booking your own additional accommodation directly with the hotel, please be aware that you may be required to change rooms at the start/end of your tour.*

### **Maximum Room Capacity**

2 people.

### **Triple Share**

Not available.

### **Bedding Configuration**

Twin or double (subject to availability).

## Optional Tours/activities

### *Please note:*

- Some tours or shore excursions require minimum numbers to operate.
- Shore excursions can be booked/reserved directly with the cruise line before travel (subject to availability)
- Shore excursions can also be booked whilst onboard (subject to availability).
- Shore excursion programmes and itineraries may vary depending on local conditions and/or any unforeseen events concerning the timing on the day of the tour. Some excursions are very popular, and therefore availability cannot always be guaranteed, it is advisable to book in advance to avoid disappointment.

## Exclusions

- Visa fees and requirements
- Domestic transfers and flights not stated in the deal offer
- Meals/beverages not stated in the deal offer
- Optional gratuities/tipping
- Optional activities/tours

- Personal expenses
- Travel insurance
- Any costs associated with an interruption to your tour as a result of an airline schedule change or cancellation
- Mandatory city tax

## Gratuities / Tipping

*Please note: Tipping for services provided is always a matter of personal discretion; however, please be aware that many locals consider tipping part of their normal remuneration, and they may approach you for payment; there's no need to be intimidated by the request.*

### **Cruise**

Tipping is neither required nor expected.

## Other Important Information

### TOUR GUIDE VS. TOUR LEADER

#### **Tour Guide:**

Often locals with intimate knowledge of an area, its culture, and history. Their role entails providing commentary, routing the tour, and seeing that people have a good time. They are a licensed, qualified expert who supplies specific information on the history, art, architecture and culture of the city/village/attraction where they are guiding the tour. The guide meets the group at the required place and leaves it at the end of the tour; they do not travel with the group.

#### **Tour Leader:**

An experienced person tasked with ensuring the smooth operation of tours, as well as providing practical support to passengers throughout the whole trip. Their role primarily includes assisting with accommodation, transportation between locations, and communication with tour guides at each stop. A tour leader may provide general guidance around a city or village and offer information on the place visited on the bus. However, they are not required to have specific art, architecture, or historical knowledge. They are not allowed to provide a guided tour or commentary of a city/village/attraction

# Important Information

once there and, if caught doing so, can be fined.

*Please note: Tour leaders/guides are not a standard inclusion in all travel offers. Tour leaders/guides will only be made available when required to enhance the experience of the destination featured.*

## CLIMATE & AVERAGE TEMPERATURES

### Darwin

The period from May to August captures Darwin's transition into and the peak of its spectacular Dry Season, making it an extremely popular time to visit. May marks the significant reduction of humidity and rainfall as the transition from the Wet Season completes, immediately offering clearer skies and comfortable conditions. From June onward, you can expect consistently dry, clear blue skies daily. Daytime temperatures typically range comfortably from 20°C to 33°C, ensuring pleasant conditions for outdoor activities. Nights are mild to cool, especially in the core months of June and July, when temperatures can drop to around 16°C to 20°C, a welcome respite from the tropical warmth. By July and August, rainfall is virtually non-existent, providing a reliably sunny and dry environment at the height of the season.

### The Kimberleys

The Kimberley region's prime touring window is from May to August, coinciding with the reliable Dry Season and near-perfect weather. This period features consistently warm, sunny days, zero rainfall, and very low humidity. Daytime temperatures average a comfortable 25°C to 30°C. Nights are mild on the coast but are significantly cooler inland, especially in June and July, where temperatures can drop to 5°C to 10°C. May and June are particularly recommended for seeing the spectacular waterfalls at their strongest flow.

### Broome

Broome, the coastal gateway to the Kimberley, experiences its prime season from May to August, a period renowned

for consistently sunny skies, low humidity, and ideal temperatures. May is an excellent transition month, offering warm days and a sharp reduction in humidity and rainfall. The core of the season (June to August) features daily highs that comfortably sit between 29°C and 31°C. Nights are refreshingly cool, especially in July, when minimum temperatures can drop to around 14°C to 16°C. Rainfall is virtually non-existent during this time, ensuring clear blue skies and perfect conditions for enjoying Broome's iconic beaches and outdoor activities.

### Weather

We always suggest referring to an online source for the most up-to-date weather information for your destination/s.

## FLIGHTS

### Seat Selection & Frequent Flyer Points:

We do not arrange seat selection. It is essential to highlight that some airlines do not allow pre-selected seats. We strongly suggest you contact the airline directly with seating allocation requirements and/or arrive at the airport earlier to arrange your seating. While we do not add frequent flyer member details to bookings, you can do this directly with the airline once you have your flight information.

### Dietary Requests

Meal options and availability differ between airlines and routes therefore not all dietary requests can be accommodated. If your flight includes meals we will select the most suitable option available based on the dietary requirements you have specified. All meal requests are subject to airline approval and are not guaranteed, therefore we recommend preparing for your flight by bringing appropriate food for yourself, as required.

### Passport Validity:

Customers must provide valid passport details either at the time of purchase or no later than 90 days before the departure date. Failure to do so may result in the cancellation of the booking. Customers will

be responsible for any costs and fees incurred in this instance.

## CRUISE

### Embarkation / Disembarkation:

- Begins approximately 2 hours after docking.
- Due to security reasons, all guests must be on board 2 hours before sailing.
- Itineraries are subject to change at any time without notice.
- Check your specific sailing for exact departure and arrival times. All times are local to the port.

*Please note: Strict Covid-19 terms may also apply regarding proof of insurance covering Covid-19 and/or vaccination. Please refer to the cruise lines' terms and conditions for further information before boarding.*

### Cruise Loyalty Discounts:

*Please note: Travellers must contact the cruise line directly upon receiving their travel documents in order to request any membership benefits they may be entitled to.*

### Luggage:

You will be responsible for all your personal belongings whilst on tour. You must carry your own luggage to and from the cruise ship, hotel and transfers.

## OTHER

### Mobility:

If you require wheelchair access please contact our friendly sales and service team to inquire on your behalf.

### Fitness Level Required:

Adventure (and spontaneity) create some of the best travel memories. Bear in mind, your home schedules and timings might not be adhered to on tour - it's all part of the fun!

A moderate level of fitness will be required.

Expect a moderate pace of touring with a focus on guided tours that may include full days with extended activity, guided city tours or nature walks. You will require a



# Important Information

general level of fitness for unassisted navigation of stairs and inclines, longer distances with possible periods of standing when visiting sites, walking on sloping, uneven ground or elevations. You will be responsible for your own luggage and have the ability to board all modes of transport without assistance. Please note: Many areas may be inaccessible to wheelchairs or mobility scooters, where the unassisted use of personal walking sticks and other aids may be required. Although some assistance may be available, every traveller should be self-reliant during all aspects of their travel.

*Please note: It is expected that every traveller must be self-reliant and able to undertake all aspects of their own travel. Please speak to your booking agent about your personal circumstances and any assistance requirements to ensure this tour is right for you.*

*Please note: If you have any concerns, please consult your healthcare provider prior to purchase/travel.*

## Sightseeing:

*Please note: If entry to a site is affected by changes in operating hours or public holiday closures, your itinerary, where possible, may be adjusted, or a similar activity will be offered in its place (subject to availability).*

## Wildlife Sighting:

TripADeal cannot guarantee animal sightings on tour. Wildlife are unpredictable and factors such as weather conditions, predatory fear and animal movements can impact sightings.

## Shopping:

Shopping overseas can be a daunting and confusing experience, especially when there is a language barrier. Please be very cautious when foreign currencies and prices are involved. If paying by credit card, please pay close attention to the amount you are being charged and keep all your receipts.

Do not make any purchases you are not comfortable with or feel pressured into. If you are uncertain or need assistance with

the language barrier, please seek assistance from your Tour Guide/Leader. Please refer to our [Terms and Conditions](#) regarding shopping for further information.

## Visas

For travellers entering from outside Australia, and who do not have Australian citizenship or residency, a visa may be required.

### Important:

- *Please start arranging your visa three weeks before departure to account for any delays due to consulate operating hours.*
- *Visa rules are subject to change. Please check with the nearest embassy, consulate or immigration department of the destination/s you are visiting once you receive your travel documentation to ensure you have the most up to date information.*
- *It is your responsibility to be travel-ready and ensure that you are aware and comply with any destination or travel requirements, including the validity of all required travel documents.*
- *Passengers who are not Australian citizens must also check with the respective consulate or visa agency to determine what their visa requirements are and what personal identification is required.*
- *It is also important to note that some areas of employment, such as journalism, government authorities and charity organisations, may have additional restrictions in applying for visas. This may, in turn, affect the type of application required.*

## Travel Insurance

Embarking on your next trip is exciting, and while you hope the unexpected does not happen, it is best to be prepared. We strongly recommend you take out travel insurance when making your booking. Whether it's a potential medical emergency, a flight cancellation, a delayed suitcase, or an unforeseen event, it's important to ensure you're adequately protected. For more information or advice

visit <https://www.tripadeal.com.au/travel-insurance>

## Schedule Of Fees

### Voluntary Changes

This includes booking changes requested by you, including but not limited to those changes requiring an airline ticket or a Purchase Confirmation reissue.

- Changes - \$100 per booking and any additional charges applied by the airline/cruise company/accommodation/other travel providers.

### Name Changes Due To Passenger Error

- If the incorrect name has been provided, charges of \$100 per booking and any additional charges applied by the airline/cruise company/accommodation/other travel providers.

### Supplier Fees

In the event the tour package you have purchased is unable to proceed, and/or a Travel Supplier is unable to fulfil the tour due to external circumstances (Limitation of Liability e.g. a Force Majeure event), there may be a fee or amount of money that is withheld by our Suppliers and is unrecoverable. This may be due to non-refundable airline tickets, cancellation penalties with cruise cabins or unrecoverable payments with our land/accommodation partners. If refunds are not available from Suppliers, we will endeavour to obtain a travel credit on the best terms available and communicate these outcomes to you. In the event we are unable to obtain a refund or travel service credit, or part thereof, this cost is passed on to the customer as a Supplier Fee.