



Highlights of Antarctica

ARGENTINA ● ANTARCTICA

The Offer

Embark on an expedition cruise from South America to set foot onto the Great White Continent of Antarctica. Sail for the Frozen Continent's pristine beauty from Argentina's Ushuaia, the world's southernmost city, and navigate the legendary Drake Passage where the Atlantic and Pacific Oceans meet.

HX's expedition ships, Fridtjof Nansen and MS Roald Amundsen, offer the comfort and elegance of Scandinavian-designed cabins with panoramic windows that capture every moment. Discover fantastic menus prepared in the state-of-the-art kitchens at specialty Restaurant Lindstrom (charges may apply), the more casual Restaurant Fredheim or Restaurant Aune. You can also join the lively atmosphere at Explorer Lounge & Bar with stunning Antarctic views.

Stay active and rejuvenate with an onboard wellness centre that includes a sauna, spa, infinity pool, hot tub and fitness room (extra charges may apply). Gain a deeper understanding of Antarctica from experts offering workshops and lectures highlighting the environment, wildlife and scientific research.

Admire towering icebergs, colossal glaciers and a breathtaking array of Antarctic fauna and seabirds. Led by expedition guides, you'll venture onto icy shores and Zodiac cruises for up close wildlife encounters. Get your camera ready as you catch sight of seals, whales, albatross, waddling penguins, Leopard seals and more.

This bucket list adventure includes return international full-service flights, a 10-night all-inclusive Antarctica expedition cruise with HX, 3 nights of 4-star hotel accommodation, 32 meals and more.

Want more? Upgrade to an Arctic Superior Balcony Cabin or Expedition Suite, or extend your expedition for 4 extra days in Antarctica by choosing Itinerary 2 .

Offer available for a limited time or until sold out. TRIP A DEAL PTY LTD: 50149240433

Updated: 02 Jun 2026 11:13:39

Have a question about this deal? We're here to help.
Call our friendly team on 1300 158 912

1

FREQUENT
FLYER

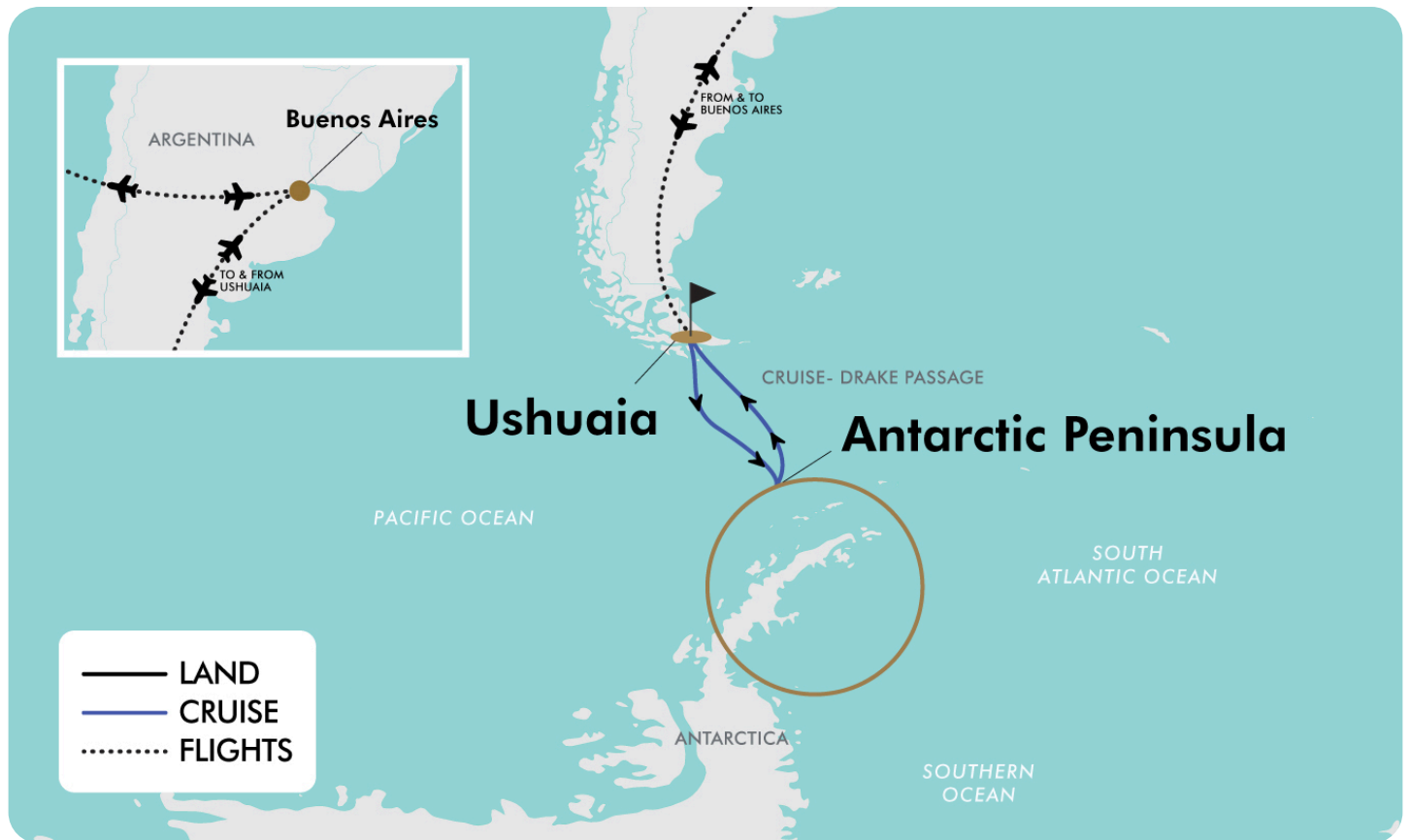


Trip
aDeal



15-DAY CRUISE PACKAGE | HIGHLIGHTS OF ANTARCTICA

The Map



Offer available for a limited time or until sold out. TRIP A DEAL PTY LTD: 50149240433

Updated: 02 Jun 2026 11:13:39

Have a question about this deal? We're here to help.
Call our friendly team on 1300 158 912



15-DAY CRUISE PACKAGE | HIGHLIGHTS OF ANTARCTICA

The Itinerary

Itinerary 1

Day 1 Australia (or New Zealand) - Buenos Aires, Argentina

Today, meet us in to Buenos Aires, Argentina.

Upon arrival, make your way to your hotel and enjoy the rest of your evening at leisure. At the hotel, you'll find the HX Hospitality Desk. Here, you'll receive detailed information about your embarkation day, including flight details, transfer timings, luggage tags and more. The desk is open one day prior to embarkation, between 10:00 and 20:00. There will be signs in the hotel directing you to the desk. If you arrive after 20:00, you'll receive a letter during check-in with timings and information.

Please note:

- Due to flight times and scheduling some customers may be required to depart Day 0.
- Flight times will be confirmed on your final documentation which you will receive at least 4-6 weeks prior to departure.

Overnight: Alvear Art Hotel or similar, Buenos Aires

Meals included: In-Flight

Day 2 Buenos Aires - Ushuaia, Argentina - Embark 10-night Antarctica Expedition

At the appropriate time, meet your driver at the hotel and transfer to the airport. Your adventure begins with an early morning flight to Ushuaia, where you'll meet our hybrid-powered expedition ship, specially designed for sustainable cruising in polar waters. The bustling port town of Ushuaia is the capital of Argentina's Tierra del Fuego Province. Set against the magnificent backdrop of the Martial Glacier, Ushuaia vies for the title of the world's southernmost city. After a briefing from your Expedition Team, you'll have time to locate your cabin and explore the comforts and amenities on board.

Please Note:

- Depending on your flight time, the transfer from the hotel may depart as early as 05:00.
- The flight from Buenos Aires to Ushuaia is operated by JetSmart and takes approximately three hours and 45 minutes.
- After collecting your luggage, you will be brought to a central location in Ushuaia where you can explore the town and enjoy lunch (charges apply). Your checked luggage will be transported separately and delivered to your cabin on board. It is advisable to wear comfortable walking shoes, warm and rainproof clothes.

Overnight: HX Expeditions MS Fridtjof Nansen or MS Roald Amundsen

Meals included: Breakfast; Dinner



15-DAY CRUISE PACKAGE | HIGHLIGHTS OF ANTARCTICA

The Itinerary

Itinerary 1

Day 3 Crossing the Drake Passage

The ship will cross the Drake Passage, named after the English sea captain and privateer Sir Francis Drake who discovered it by chance in 1578. Since there is no landmass at this latitude, wind and water roam freely, making it hard for some ships to sail here. But don't worry, even the 'Drake Shake' isn't a big deal for HX Expeditions ultra modern ships.

On the two-day crossing through the Drake Passage, the Expedition Team will equip you with all you need to make the most of your polar expedition.

Visit the onboard Science Center and find out what lies ahead. Listen to experts talk passionately about Antarctica's history, the science beneath the ice, and the impact of climate change and plastic pollution. You'll learn how to make your visit as safe and as low-impact as possible, and about the Citizen Science projects you can join.

There's plenty of time to relax, so unwind in the spa and wellness area (charges may apply), enjoy some delicious cuisine and meet fellow travellers in the Explorer Lounge & Bar.

Overnight: HX Expeditions MS Fridtjof Nansen or MS Roald Amundsen

Meals included: Breakfast; Lunch; Dinner

Day 4 Crossing the Drake Passage

Overnight: HX Expeditions MS Fridtjof Nansen or MS Roald Amundsen

Meals included: Breakfast; Lunch; Dinner

Day 5 Antarctica

Nothing prepares you for your first sight of Antarctica's immense, frozen beauty. Surrounded by looming glaciers, and icebergs the size of floating cathedrals, Antarctica will fill you with wonder. Perhaps the most surprising part of Antarctica is the silence. It's a stillness that's broken every so often by the locals – the wildlife.

HX expedition cruises to Antarctica are not passive sail-bys. You'll be an explorer, not a tourist, boarding small boats, touring iceberg-filled bays and going ashore to see penguin colonies and other wildlife. Whales begin to arrive in greater numbers by December and January. This is also when the first penguin chicks hatch and seeing the clumsy clumps of feathers run around is always a charming sight. February and March offer peak whale-watching opportunities, when large amounts of krill lure them to the area. Here, nature is king, and we are mere observers. Your experienced Captain will continually monitor conditions to create the best possible itinerary for your adventure. Rest assured, each day will offer something different and thrilling. You'll join the Expedition Team on landings and ice-cruises on the ships Zodiac boats.

Back on board, the Expedition Team will continue their lectures, helping you grow in your insights of the frozen continent. Over five magical days, you'll experience this amazing world in a way that will stay with you for a lifetime.

Overnight: HX Expeditions MS Fridtjof Nansen or MS Roald Amundsen

Meals included: Breakfast; Lunch; Dinner

Offer available for a limited time or until sold out. TRIP A DEAL PTY LTD: 50149240433

Updated: 02 Jun 2026 11:13:39

Have a question about this deal? We're here to help.
Call our friendly team on 1300 158 912



15-DAY CRUISE PACKAGE | HIGHLIGHTS OF ANTARCTICA

The Itinerary

Itinerary 1

Day 6 Antarctica

Your expedition continues on days 6 to 9. You will have the opportunity to partake in optional activities to enhance your experience. While onboard, the expedition team will take expressions of interest for the below activities and your participation will be confirmed subject to weather conditions and availability.

Optional Activity: Camping in Antarctica (An Amundsen Night)

Duration: 10 hours

In the true style of the early explorers, venture out at night for a once in a lifetime experience as we go camping in the Antarctic night.

Although Amundsen, Scott and Nordenskjold had different equipment, they used the best gear available at the time. So do HX. This activity features top of the line camping equipment that meets Antarctic standards for camping on snow.

As an IAATO member, HX Expeditions adheres to all guidelines associated with onshore overnight stays in Antarctica.

Optional Activity: Kayaking Adventure in Antarctica

Enjoy the feeling of gliding through Antarctic waters in serene silence and admiring the sight of glaciers, icebergs and snow-covered mountains around you. You might even meet seals, birds, penguins and perhaps whales along the way.

Optional Activity: Snowshoeing in Antarctica

This activity is only possible when snow conditions are right, which is usually late spring or early in the Antarctic summer. Equipped with modern snowshoes, you'll easily walk on the soft snow and reach places that are normally difficult to get to just on foot.

Please note:

- **Booking & Fees:** These activities cannot be pre-booked and are subject to additional charges. Sign-up is handled onboard, and upon confirmation, the relevant fee will be charged to your onboard account.
- **Availability:** In accordance with IAATO guidelines, spaces are limited. If demand exceeds capacity, participants will be selected via a lottery system conducted by your expedition team.
- **Weather Dependent:** HX aim to offer multiple opportunities for these activities, but all excursions are strictly dependent on prevailing weather and ice conditions.

Overnight: HX Expeditions MS Fridtjof Nansen or MS Roald Amundsen

Meals included: Breakfast; Lunch; Dinner

Day 7 Antarctica

Overnight: HX Expeditions MS Fridtjof Nansen or MS Roald Amundsen

Meals included: Breakfast; Lunch; Dinner

Day 8 Antarctica



15-DAY CRUISE PACKAGE | HIGHLIGHTS OF ANTARCTICA

The Itinerary

Itinerary 1

Overnight: HX Expeditions MS Fridtjof Nansen or MS Roald Amundsen

Meals included: Breakfast; Lunch; Dinner

Day 9 Antarctica

Overnight: HX Expeditions MS Fridtjof Nansen or MS Roald Amundsen

Meals included: Breakfast; Lunch; Dinner

Day 10 Crossing the Drake Passage

After five incredible days, you'll have experienced so much in Antarctica. Your head will likely be filled with a swirling kaleidoscope of special memories and impressions.

The next couple of days will be a chance to reflect on your adventure to the seventh continent. As your mind tries to conjure up the magical Antarctic scenery, now could be a good time to sift through your photos and videos to recapture a sense of its magnitude. Why not take the chance to unwind in the sauna, or enjoy a few relaxing spa treatments (charges apply) in the wellness area.

Overnight: HX Expeditions MS Fridtjof Nansen or MS Roald Amundsen

Meals included: Breakfast; Lunch; Dinner

Day 11 Crossing the Drake Passage

Overnight: HX Expeditions MS Fridtjof Nansen or MS Roald Amundsen

Meals included: Breakfast; Lunch; Dinner

Day 12 Disembark Cruise - Fly Ushuaia to Buenos Aires, Argentina

Your expedition cruise ends in Ushuaia, the main city in Tierra del Fuego and Argentina's southernmost province.

Having travelled to the bottom of the world and back - you've journeyed to the fabled Seventh Continent, something that only a lucky handful have ever accomplished, and you have enchanting stories and penguin photos to prove it!

From Ushuaia, disembark and transfer to the airport for the flight back to Buenos Aires and a second chance to experience the Argentine capital.

Upon arrival in Buenos Aires, be transferred to the hotel and enjoy the rest of your day at leisure.

Overnight: Hotel NH Collection Buenos Aires Lancaster or similar, Buenos Aires

Meals included: Breakfast

Day 13 Buenos Aires, Argentina

Enjoy a day at leisure in Buenos Aires, Argentina.

Home to a proud and diverse community of porteños, or 'people of the port', Buenos Aires is a sensuous fusion of faded European splendour and Latin American panache. There are plenty of



15-DAY CRUISE PACKAGE | HIGHLIGHTS OF ANTARCTICA

The Itinerary

Itinerary 1

places to explore, including many parrillas (grills) serving authentic Argentine steak. Or maybe you'd like to practise your dance moves in the famous hometown of tango.

Overnight: Hotel NH Collection Buenos Aires Lancaster or similar, Buenos Aires

Meals included: Breakfast

Day 14 Buenos Aires, Argentina - Australia (or New Zealand)

The time has come to begin your journey back home. At the appropriate time, meet your driver at the hotel and transfer to the airport for your flight home.

Meals included: Breakfast; In-Flight

Day 15 Arrive in Australia (or New Zealand)

Meals included: None



15-DAY CRUISE PACKAGE | HIGHLIGHTS OF ANTARCTICA

The Itinerary

Itinerary 2

Day 1 Australia (or New Zealand) - Buenos Aires, Argentina

Today, fly to Buenos Aires, Argentina!

Upon arrival, meet your driver at the airport and transfer to your hotel and enjoy the rest of your evening at leisure. At the hotel, you'll find the HX Hospitality Desk. Here, you'll receive detailed information about your embarkation day, including flight details, transfer timings, luggage tags and more. The desk is open one day prior embarkation, between 10:00 and 20:00. There will be signs in the hotel directing you to the desk. If you arrive after 20:00, you'll receive a letter during check-in with timings and information.

Please note:

- Due to flight times and scheduling some customers may be required to depart Day 0.
- Flight times will be confirmed on your final documentation which you will receive at least 4-6 weeks prior to departure.

Overnight: Hotel Emperador Buenos Aires or similar, Buenos Aires

Meals included: In-Flight

Day 2 Buenos Aires - Ushuaia, Argentina - Embark 14-Night Antarctica Expedition

At the appropriate time, meet your driver at the hotel and transfer to the airport. Your adventure begins with an early morning flight to Ushuaia, where you'll meet our hybrid-powered expedition ship, specially designed for sustainable cruising in polar waters.

The bustling port town of Ushuaia is the capital of Argentina's Tierra del Fuego Province. Set against the magnificent backdrop of the Martial Glacier, Ushuaia vies for the title of the world's southernmost city. After a briefing from your Expedition Team, you'll have time to locate your cabin and explore the comforts and amenities on board.

Please note:

- Depending on your flight time, the transfer from the hotel may depart as early as 05:00.
- The flight from Buenos Aires to Ushuaia is operated by JetSmart and takes approximately three hours and 45 minutes.
- After collecting your luggage, you will be brought to a central location in Ushuaia where you can explore the town and enjoy lunch. Your checked luggage will be transported separately and delivered to your cabin on board. It is advisable to wear comfortable walking shoes, warm and rainproof clothes.

Overnight: HX Expeditions MS Fridtjof Nansen or MS Roald Amundsen

Meals included: Breakfast; Dinner

Day 3 Crossing the Drake Passage

The ship will cross the Drake Passage, named after the English sea captain and privateer Sir Francis Drake who discovered it by chance in 1578. Since there is no landmass at this latitude, wind and water roam freely, making it hard for some ships to sail here. But don't worry, even the 'Drake Shake' isn't a big deal for HX Expeditions ultra modern ships.



15-DAY CRUISE PACKAGE | HIGHLIGHTS OF ANTARCTICA

The Itinerary

Itinerary 2

On the two-day crossing through the Drake Passage, the Expedition Team will equip you with all you need to make the most of your polar expedition. Visit the onboard Science Centre and find out what lies ahead. Listen to experts talk passionately about Antarctica's history, the science beneath the ice, and the impact of climate change and plastic pollution. You'll learn how to make your visit as safe and as low-impact as possible, and about the Citizen Science projects you can join.

There's plenty of time to relax, so unwind in the spa and wellness area, enjoy some delicious cuisine and meet fellow travellers in the Explorer Lounge & Bar.

Overnight: HX Expeditions MS Fridtjof Nansen or MS Roald Amundsen

Meals included: Breakfast; Lunch; Dinner

Day 4 Crossing the Drake Passage

Overnight: HX Expeditions MS Fridtjof Nansen or MS Roald Amundsen

Meals included: Breakfast; Lunch; Dinner

Day 5 Antarctica

Nothing prepares you for your first sight of Antarctica's immense, frozen beauty.

Surrounded by looming glaciers, and icebergs the size of floating cathedrals, Antarctica will fill you with wonder. Perhaps the most surprising part of Antarctica is the silence. It's a stillness that's broken every so often by the locals – the wildlife.

HX expedition cruises to Antarctica are not passive sail-bys. You'll be an explorer not a tourist, boarding small boats, touring iceberg-filled bays and going ashore to see penguin colonies and other wildlife. Whales begin to arrive in greater numbers by December and January. This is also when the first penguin chicks hatch and seeing the clumsy clumps of feathers run around is always a charming sight. February and March offer peak whale-watching opportunities, when large amounts of krill lure them to the area. Here, nature is king, and we are mere observers.

Your experienced Captain will continually monitor conditions to create the best possible itinerary for your adventure. Rest assured, each day will offer something different and thrilling. You'll join the Expedition Team on landings and ice-cruises on the ships Zodiac boats. Back on board, the Expedition Team will continue their lectures, helping you grow in your insights of the frozen continent. Over five magical days, you'll experience this amazing world in a way that will stay with you for a lifetime.

Overnight: HX Expeditions MS Fridtjof Nansen or MS Roald Amundsen

Meals included: Breakfast; Lunch; Dinner

Day 6 Antarctica

During your expedition you will have the opportunity to partake in optional activities to enhance your experience.

While onboard, the expedition team will take expressions of interest for the below activities and your participation will be confirmed subject to weather conditions and availability.

Optional Activity: Camping in Antarctica (An Amundsen Night)



15-DAY CRUISE PACKAGE | HIGHLIGHTS OF ANTARCTICA

The Itinerary

Itinerary 2

Duration: 10 hours

In the true style of the early explorers, venture out at night for a once in a lifetime experience as we go camping in the Antarctic night. Although Amundsen, Scott and Nordenskjold had different equipment, they used the best gear available at the time. So do HX. This activity features top of the line camping equipment that meets Antarctic standards for camping on snow. As an IAATO member, HX Expeditions adheres to all guidelines associated with onshore overnight stays in Antarctica.

Optional Activity: Kayaking Adventure in Antarctica

Enjoy the feeling of gliding through Antarctic waters in serene silence and admiring the sight of glaciers, icebergs and snow-covered mountains around you. You might even meet seals, birds, penguins and perhaps whales along the way.

Optional Activity: Snowshoeing in Antarctica

This activity is only possible when snow conditions are right, which is usually late spring or early in the Antarctic summer. Equipped with modern snowshoes, you'll easily walk on the soft snow and reach places that are normally difficult to get to just on foot.

Please note:

- **Booking & Fees:** *These activities cannot be pre-booked and are subject to additional charges. Sign-up is handled onboard, and upon confirmation, the relevant fee will be charged to your onboard account.*

- **Availability:** *In accordance with IAATO guidelines, spaces are limited. If demand exceeds capacity, participants will be selected via a lottery system conducted by your expedition team.*
- **Weather Dependent:** *HX aim to offer multiple opportunities for these activities, but all excursions are strictly dependent on prevailing weather and ice conditions.*

Overnight: HX Expeditions MS Fridtjof Nansen or MS Roald Amundsen

Meals included: Breakfast; Lunch; Dinner

Day 7 Antarctica

Overnight: HX Expeditions MS Fridtjof Nansen or MS Roald Amundsen

Meals included: Breakfast; Lunch; Dinner

Day 8 Antarctica

Overnight: HX Expeditions MS Fridtjof Nansen or MS Roald Amundsen

Meals included: Breakfast; Lunch; Dinner

Day 9 Antarctica

Overnight: HX Expeditions MS Fridtjof Nansen or MS Roald Amundsen

Meals included: Breakfast; Lunch; Dinner



15-DAY CRUISE PACKAGE | HIGHLIGHTS OF ANTARCTICA

The Itinerary

Itinerary 2

Day 10 Antarctica

Overnight: HX Expeditions MS Fridtjof Nansen or MS Roald Amundsen

Meals included: Breakfast; Lunch; Dinner

Day 11 Antarctica

Overnight: HX Expeditions MS Fridtjof Nansen or MS Roald Amundsen

Meals included: Breakfast; Lunch; Dinner

Day 12 Antarctica

Overnight: HX Expeditions MS Fridtjof Nansen or MS Roald Amundsen

Meals included: Breakfast; Lunch; Dinner

Day 13 Antarctica

Overnight: HX Expeditions MS Fridtjof Nansen or MS Roald Amundsen

Meals included: Breakfast; Lunch; Dinner

Day 14 Crossing the Drake Passage

After five incredible days, you'll have experienced so much in Antarctica. Your head will likely be filled with a swirling kaleidoscope of special memories and impressions. The next couple of days will be a chance to reflect on your adventure to the seventh continent. As your mind tries to conjure up the magical Antarctic scenery, now could be a good time to sift through your photos and videos to recapture a sense of its magnitude.

Why not take the chance to unwind in the sauna, or enjoy a few relaxing spa treatments (charges apply) in the wellness area?

Overnight: HX Expeditions MS Fridtjof Nansen or MS Roald Amundsen

Meals included: Breakfast; Lunch; Dinner

Day 15 Crossing the Drake Passage

Overnight: HX Expeditions MS Fridtjof Nansen or MS Roald Amundsen

Meals included: Breakfast; Lunch; Dinner



15-DAY CRUISE PACKAGE | HIGHLIGHTS OF ANTARCTICA

The Itinerary

Itinerary 2

Day 16 Disembark Cruise - Fly Ushuaia to Buenos Aires, Argentina

Your expedition cruise ends in Ushuaia, the main city in Tierra del Fuego, Argentina's southernmost province. Having travelled to the bottom of the world and back - you've journeyed to the fabled Seventh Continent, something that only a lucky handful have ever accomplished, and you have enchanting stories and penguin photos to prove it!

From Ushuaia, disembark and transfer to the airport for the flight back to Buenos Aires and a second chance to experience the Argentine capital. Upon arrival in Buenos Aires, be transferred to the hotel and enjoy the rest of your day at leisure.

Overnight: Hotel NH Collection Buenos Aires Lancaster or similar, Buenos Aires

Meals included: Breakfast

Day 17 Buenos Aires, Argentina

Enjoy a day at leisure in Buenos Aires, Argentina.

Home to a proud and diverse community of 'porteños', or 'people of the port', Buenos Aires is a sensuous fusion of faded European splendour and Latin American panache. There are plenty of places to explore, including many parrillas serving authentic Argentine steak. Or maybe you'd like to practise your dance moves in the famous hometown of the tango.

Overnight: Hotel NH Collection Buenos Aires Lancaster or similar, Buenos Aires

Meals included: Breakfast

Day 18 Buenos Aires, Argentina - Australia (or New Zealand)

The time has come to begin your journey back home. At the appropriate time, meet your driver at the hotel and transfer to the airport for your flight home.

Meals included: Breakfast; In-Flight

Day 19 Arrive in Australia (or New Zealand)

Meals included: None



15-DAY CRUISE PACKAGE | HIGHLIGHTS OF ANTARCTICA

Tour Inclusions

HIGHLIGHTS

Witness breathtaking landscapes and wildlife as you experience the surreal beauty of Antarctica*

Cruise aboard HX Expeditions MS Fridtjof Nansen or MS Roald Amundsen

Set sail on a modern, state-of-the-art expedition vessel

Spot colonies of penguins, blue whales and pods of playful Orca whales

Look out for Antarctic fur seals, Leopard seals, Elephant seals, Antarctic seabirds and more

Cross the famed Drake Passage, crossroads of the Atlantic and Pacific Oceans

Step foot on the great white continent with several escorted Zodiac landings

Gain an insight with in-depth lectures by the dedicated expedition team on a variety of topics

Explore the ship's Science Center with its extensive library and advanced equipment

Immerse yourself in the Citizen Science Programme for a chance to assist with live scientific research

Get pro tips to snap amazing photographs with the help of a professional onboard photographer

Enjoy time at leisure to explore Buenos Aires

*Medical clearance is required prior to boarding for all expedition cruises to Antarctica

FLIGHTS

Return international full-service flights (economy class), departure city surcharges may apply

Return charter flights between Buenos Aires and Ushuaia, Argentina

CRUISE

Itinerary 1: 10-night all-inclusive Antarctica cruise with HX Expeditions aboard MS Fridtjof Nansen or MS Roald Amundsen

Itinerary 2: 14-night all-inclusive Antarctica cruise with HX Expeditions aboard MS Roald Amundsen

Multiple small group Zodiac landings and activities at numerous spectacular locations

Breakfast, lunch and dinner in restaurants Aune and Fredheim

Delicious coffee, tea and soft drinks all-day

Enjoy a glass of wine or beer before dinner in the Pool Bar or unwind in the evening with a cocktail in the Explorer Lounge

Whatever and whenever you fancy, drinks are available throughout the day and evening at no additional cost (excluding premium drinks)

Gratuities included

Complimentary Wi-Fi onboard

Onboard Activities

In-depth lectures and discussions by experts on the Expedition Team

Full use of the Science Centre, extensive library and advanced biological and geological equipment

Citizen Science Programme, where you can assist with ongoing scientific research

Photography tips and techniques for capturing landscape and wildlife from the onboard professional photographer

Use of ship's hot tubs, infinity pool, panoramic sauna, outdoor and indoor gyms and running track

Informal gatherings with the crew for daily briefings

Landing Activities

Escorted landings with small expedition boats



15-DAY CRUISE PACKAGE | HIGHLIGHTS OF ANTARCTICA

Tour Inclusions

Loan of boots, trekking poles and all equipment for activities

Complimentary wind and water-resistant expedition jacket (or other HX Expedition kit)

Expedition photographers are on hand to assist you

ACCOMMODATION

3 nights of 4-star hotel accommodation in Buenos Aires, Argentina

DINING

Itinerary 1: 32 meals, including daily breakfast and all meals while cruising

Itinerary 2: 44 meals, including daily breakfast and all meals while cruising

House beer and wine, sodas and mineral water included in Restaurants Aune and Fredheim while cruising

ESSENTIALS

Airline and cruises taxes, plus surcharges included

TRANSFERS

All transfers included

Important Information

**Please note: All information provided in this brochure is subject to both change and availability. Prior to purchase please check the current deal for up-to-date information. If you have already purchased this deal, the terms and conditions on your Purchase Confirmation apply and take precedence over the information in this brochure.*

Booking Information

After purchase, you will receive a receipt and a Purchase Confirmation, directing you to an online Passenger Information Form. You must complete the Passenger Information Form within 72 hours of purchase.

Any special requests, preferences and optional extras MUST be clearly stated in your Passenger Information Form. Any change requested after submitting your Passenger Information Form cannot be guaranteed, is strictly subject to availability and will incur surcharges as outlined in the Schedule of Fees below.

Please note: All countries and territories have different entry requirements in relation to vaccinations, quarantine/isolation periods and travel restrictions. Due to the evolving nature, we would ask all of our customers to monitor, meet and adhere to the specific requirements of their intended destination(s) in the lead-up to and immediately before travel, as well as any requirements post-travel upon their return.

Our Policies

Cancellation and Refund Policy

By placing a booking with us, you acknowledge the following important information:

● we act as your booking agent ;

TripADeal is a booking services provider, and curates the Travel Offers available on our website. We act as your booking agent, and we receive payment for the Booking Services as part of the booking price, however, we do not provide any of the Travel Services (flights, accommodation, tours or other products or services) included in your booking – the Travel Services are provided by a number of third party Travel Suppliers.

● **each booking is unique** ; our Travel Offers are made up of a variety of different components and are, during the booking process, uniquely tailored to suit your requirements, for example, departure dates and ports, flight and room upgrades, tour inclusions, etc.

● **changes/modifications to your booking may not be possible** ; once your booking has been made, changes or modifications may not be possible, and where possible, may incur a fee. It is important to ensure that the information you provide during the booking process is accurate and up to date, and that you read the Travel Offer carefully before placing your order.

● **Travel Offers are a package** ; our Travel Offers have been curated into package offerings and must be used as a package – individual components cannot be used independently of the full package offering.

● **our Travel Offers are generally non-refundable** ; in order to provide great value Travel Offers, we work with a variety of Travel Suppliers to find the best deals – this often means the Travel Suppliers' offerings are non-refundable to ensure the best price. We recommend that you obtain travel insurance as soon as you make a booking with us. If your plans change, you can receive a full refund (excluding credit card fees) if you cancel at least 12 months in advance to your scheduled departure date.

To read more about our Cancellation and Refund Policy, please [click here](#).

General Terms and Conditions

By placing your booking with us, you acknowledge and agree to our [Terms & Conditions](#), [Privacy Policy](#) and [Cancellation Policy](#).

Offer Essentials

This Travel Offer is valid for travel on selected dates until the 9th March 2027
This Travel Offer is priced per person based on a twin share.

Departure Dates & Surcharges

See checkout for live dates and availability.

Single Traveller Supplement

For solo travellers, a mandatory single supplement applies. A select number of discounted solo cabins are available for these departures. Please see the cart for pricing details and availability.

Please note: Accommodation for single customers who are travelling on a tour or cruise package may be in a single room, depending on availability.

Child Policy

- No child discounts are offered. The full price applies to all children travelling with their parents.
- Valid for children 12 years old and over.

Please note: Children must be accompanied by a responsible adult 21 years old and over to travel. No unaccompanied minors are allowed.

Flights

Departure Cities

Sydney, Melbourne, *Brisbane, *Adelaide, *Perth, *Auckland

Departure City Surcharges

Brisbane: \$150 per person
Adelaide: \$150 per person
Perth: \$600 per person
Auckland: \$100 per person

International Flight(s)

Full-Service Airline(s) Used

- Cabin Class: Economy Class

Please note: We cannot accommodate one-way flights. Travellers must take all included flights within the package, and any flights intentionally forfeited will result in later flights being subject to cancellation.

Please note: From Australia or New Zealand, the flying journey to your destination may take up to 35 hours, with up to 2 stops. This is provided as a guide only - actual flight duration can vary depending on availability and airline schedules. Your booking's final details will be confirmed to you via email once available.

Important Information

Domestic Flight(s) Used

- Cabin Class: Economy Class
- Route: Buenos Aires - Ushuaia - Buenos Aires

Domestic Flight Information

Baggage allowance per person
1 x 23 Kg of checked baggage
1 x 7 Kg of carry on baggage

Preferred Airline Surcharge

- Not available

Arrive Early and Stay Behind Options

Arrive Early

Buenos Aires, Argentina - From \$300 per person, subject to availability.

Stay Behind

Buenos Aires, Argentina - From \$300 per person, subject to availability.

Please note:

- *This fee does not include extra nights' accommodation, meals or airport transfers.*
- *Flight booking changes or cancellations after air tickets have been issued are not guaranteed and may incur additional fees and fare difference, subject to the airline cancellation and change policies.*
- *Flight changes are subject to availability at the time of booking.*
- *A high-season Arrive Early or Stay Behind can be purchased for an additional charge, subject to availability. For pricing, please refer to the cart.*
- *You can arrive early, up to 60 days before your package's start date, and/or stay behind until 60 days after your package's end date. Should you wish to arrive earlier or stay behind for more than 60 days, please contact us to request availability. Additional costs may apply.*
- *High season surcharges apply to flights departing between the below date ranges:*
- *1st December 2025 - 19th December 2025*
- *20th December 2025 - 4th January 2026*
- *5th January 2026 - 31st January 2026*
- *3rd April 2026 - 20th April 2026*

- *26th June 2026 - 17th July 2026*
- *18th September 2026 - 9th October 2026*
- *12th December 2026 - 18th December 2026*
- *19th December 2026 - 3rd January 2027*
- *4th January 2027 - 26th January 2027*

Stopover Packages

* Santiago, Chile

Includes:

- 2, 3 or 5 nights in 4-star accommodation
- Daily breakfast
- Return airport transfers

For pricing, please refer to the payment cart at checkout.

Please note:

- *When a pre and post-tour stopover is chosen, the same stopover location must be chosen each way, due to the airline used.*
- *When selecting an Arrive Early or Stay Behind in conjunction with a Stopover Package, the stopover will take place after the departure date you select for your Arrive Early or Stay Behind.*
- *Stopover packages are subject to availability.*
- *In the event that a purchased stopover package and a purchased preferred airline upgrade are not compatible, you will have the option to receive a refund for the preferred airline upgrade or be offered an alternative stopover city option, e.g if you choose to fly with Singapore Airlines you cannot stopover in Dubai.*
- *Blackout dates apply to flights departing between the below date ranges:*

• 2026

Christmas and New Years Eve - 18 December 2026 to 3 January 2027

• 2027

Christmas and New Years Eve - 20 December 2027 to 3 January 2028

Flight Class Upgrades

Business Class: For pricing, please refer to the payment cart at checkout.

Please note:

- *Flight upgrades are subject to availability and pricing changes (if we cannot fulfil your request, the upgrade cost will be refunded).*
- *On any upgrade purchase, short-haul flights and domestic flight sectors are not guaranteed, subject to aircraft configuration.*

Outbound Flights

Please note: Due to flight scheduling and availability, some departures may occur on Day 0. Affected customers must be available to depart the day before. Flight times will be indicated on your final documents, issued 4-6 weeks before departure.

Missed Flights

If you fail to arrive for your outbound flight, you risk all flight and land arrangements in your destination being automatically cancelled by the airlines and land operator, respectively. Additional fees may apply to reinstate these services. If you miss your flight for whatever reason, please contact us as soon as possible to make arrangements.

Cruise

Medical Disclaimer

Travel to Antarctica is physically demanding, and our Travel Suppliers require all guests to obtain medical clearance before departure even if you don't intend to disembark at Antarctica. This involves completing a medical form and may require medical clearance from a doctor, which could incur additional costs. Any guests who fail to provide the necessary medical documentation will be denied boarding.

Ship: HX Expedition MS Fridtjof Nansen or MS Roald Amundsen

Featuring HX Expedition's revolutionary battery hybrid powered propulsion system, MS Fridtjof Nansen is a near identical twin to her sister ship MS Roald Amundsen. Combining state-of-the-art technology and premium onboard experience with HX Expedition's 130 years of experience and unparalleled destinations, the Norwegian-

Important Information

built ship introduces the next generation of adventure travel.

Facilities Onboard

Cabins & Public Areas

The stunning scenery will be reflected in a rich and comfortable interior design. Scandinavian materials from nature, such as granite, oak, birch and wool will be used to create relaxed and stylish cabins and public areas. All cabins are outside and 50% with a private balcony.

Science Centre

The core of the onboard experience is the Science Centre, an edutainment venue where guests and crew meet to create a deeper understanding of the areas we explore. Science Centre will also be the onboard headquarters for the Expedition Team.

Restaurants

Three onboard restaurants will host a variety of dining options, with menus drawn from our rich Norwegian and Nordic traditions, as well as international cuisine and local inspiration. Whether enjoying your meal at Aune Main Dining, Fredheim – the informal international meeting place, or the specialty restaurant Lindstrom (charges may apply), you will indulge in low-key yet refined, modern Norwegian Nordic cooking – where our honest and delicious cuisine reflects our destinations.

Everything You Need For An Expedition Cruise

Each expedition voyage is accompanied by a hand-picked team of specialists and modern-day explorers. Highly experienced, passionate and knowledgeable, the Expedition Team will be your guides and guardians on your voyage of exploration, instructing you on safety, sustainability and science. 'MS Fridtjof Nansen' and 'MS Roald Amundsen' will feature a variety of custom-built expedition equipment including kayaks, a fleet of Blueeye underwater drones and Expedition Boats for safe landings in remote areas.

Onboard currency:

EUR

Packing Tips

When preparing for your polar expedition to destinations like Antarctica, it's essential to dress in layers. We recommend packing a warm winter jacket, as well as wind and water-resistant trousers and long thermal underwear, ideally made of wool. Don't forget a warm cap, scarf, and both fleece and wool gloves or mittens. For your inner layers, bring a warm woollen jumper and a fleece jumper or jacket. You'll also need warm socks and comfortable, broken-in walking boots with good soles for both on-deck and ashore excursions. Other essentials include sunglasses with UV filters, extra camera batteries (as cold weather shortens battery life), an adapter for European power outlets, and a swimsuit for the on-deck whirlpools.

WHAT TO PACK FOR AN EXPEDITION CRUISE

To make packing a bit easier, HX Expedition has drawn up a packing list. If you should forget something, don't worry! On board all the ships you will find a shop with a wide range of clothes and practical items.

- Onboard it's smart to wear ordinary shoes.
- Bring a memory card with a large capacity – there are sockets in the cabins to recharge photo equipment.
- The dress code aboard the ship is relaxed and casual and you are not expected to dress formally for meals.
- Extra shoelaces are also a good idea.
- Bring a good pair of binoculars.
- A small waterproof backpack is necessary for carrying essentials.
- Please remember to bring your passport and a copy of it.
- Sun protection.
- Sunglasses with UV filter lenses.
- Lip balm with UV protection. Dry, cold wind and sun often cause chapped lips.
- Money in the correct currency. Remember, the ships also accept several credit cards.

- Remember to bring sufficient medication to last through any unforeseen delays.
- You will receive a wind and water-resistant parka as a memento on this ship.
- Rubber boots are available on loan, at no extra cost.

Expeditions To Polar Waters

- Warm winter jacket
- Wind and water-resistant trousers and long thermal underwear and top (we recommend wool)
- Warm cap or headband
- You should also bring swimwear for use in our on-deck whirlpools
- Scarf or fleece tube
- Warm woollen jumper and fleece jumper/jacket, remember layers are essential
- Sunglasses with UV filter lenses
- Gloves and mittens, fleece and wool
- Warm socks
- Bring extra batteries for your camera, as battery life is shorter in cold areas
- Shoes with good soles are recommended for outdoors, on deck, and for excursions ashore. Make sure they are worn-in walking boots.

Cabins/Staterooms:

RR - Polar Outside

The Polar Outside cabins are primarily on the middle decks. Most are 20 square metres with windows and flexible sleeping arrangements, as well as a TV and a bathroom with a shower. Larger cabins on lower and middle decks are 19-23 square meters with flexible sleeping arrangements, a double bed that can be divided into two single beds (some with a sofa bed) and a TV.

XT - Arctic Superior Cabins

Arctic Superior cabins are comfortable and roomy, and have a balcony. These are high-deck cabins with a balcony. The spacious cabins are different sizes with flexible sleeping arrangements (some with sofa bed), TV, kettle, tea and coffee.

ME - Expedition Suite with Balcony

Important Information

The suites are spacious cabins with a fantastic layout, including expansive windows and a balcony. The suites feature flexible sleeping arrangements with a comfortable sofa and sitting areas, as well as a TV and a bathroom with a shower. Expedition Suites are exclusively on the upper and middle decks. Expedition Suites include a bathrobe, an espresso maker and more. An exciting welcome gift awaits all suite guests in their cabin.

Please note:

- All cabins are subject to availability; some cabins may have restricted views.
- Cruise cabins are booked on a guaranteed basis and are assigned by the cruise line prior to departure.

Cruise Arrival and Departure Times:

Please keep in mind that the provided cruise arrival and departure times are an approximate and will be finalised upon receipt of your cruise tickets.

Accommodation

Accommodation Used:

4 Star Properties (Self-Rated)

Buenos Aires, Argentina: Hotel NH Collection Buenos Aires Lancaster' and/or Alvear Art Hotel

Please note: Accommodation/rooms offered are based on a lead-in room type and are subject to availability based on seasonality. In the instance a property is not available, a similar standard of accommodation will be provided. Properties will be confirmed and included in your travel pack, which you will receive 4-6 weeks before travel.

Extra Nights

Not available.

Please note: If you are interested in booking additional nights of accommodation pre or post-tour, please wait until you receive your travel documentation approximately 4-6 weeks before departure for the confirmed list of hotels. If booking your own additional accommodation directly with the hotel, please be aware that you may be required to change rooms at the start/end of your tour.

Maximum Room Capacity

2 people.

Triple Share

Not available.

Bedding Configuration

Twin or double (subject to availability).

Optional Tours/activities

- Some tours or shore excursions require minimum numbers to operate.
- Shore excursions can be booked/reserved directly with the cruise line before travel (subject to availability)
- Shore excursions can also be booked whilst onboard (subject to availability).
- Shore excursion programmes and itineraries may vary depending on local conditions and/or any unforeseen events concerning the timing on the day of the tour. Some excursions are very popular, and therefore availability cannot always be guaranteed, it is advisable to book in advance to avoid disappointment.

Exclusions

- Visa fees and requirements
- Domestic transfers and flights not stated in the deal offer
- Meals/beverages not stated in the deal offer
- Optional gratuities/tipping
- Optional activities/tours
- Personal expenses
- Travel insurance
- Any costs associated with an interruption to your tour as a result of an airline schedule change or cancellation
- Mandatory city tax

Gratuities / Tipping

Please note: Tipping for services provided is always a matter of personal discretion; however, please be aware that many locals consider tipping part of their normal remuneration, and they may approach you for payment; there's no need to be intimidated by the request.

Cruise

It is not standard practice to tip on HX ships, but if you feel that certain crew members should be rewarded for providing exceptional service, there are tip boxes in the restaurant together with envelopes.

Other Important Information

TOUR GUIDE VS. TOUR LEADER

Tour Guide:

Often locals with intimate knowledge of an area, its culture, and history. Their role entails providing commentary, routing the tour, and seeing that people have a good time. They are a licensed, qualified expert who supplies specific information on the history, art, architecture and culture of the city/village/attraction where they are guiding the tour. The guide meets the group at the required place and leaves it at the end of the tour; they do not travel with the group.

Tour Leader:

An experienced person tasked with ensuring the smooth operation of tours, as well as providing practical support to passengers throughout the whole trip. Their role primarily includes assisting with accommodation, transportation between locations, and communication with tour guides at each stop. A tour leader may provide general guidance around a city or village and offer information on the place visited on the bus. However, they are not required to have specific art, architecture, or historical knowledge. They are not allowed to provide a guided tour or commentary of a city/village/attraction once there and, if caught doing so, can be fined.

Please note: Tour leaders/guides are not a standard inclusion in all travel offers. Tour leaders/guides will only be made available when required to enhance the experience of the destination featured.

CLIMATE & AVERAGE TEMPERATURES

If you've never visited a polar destination, you're probably wondering what you can expect weather-wise when you travel to Antarctica. Even if you've spent time in the Arctic Circle, the Antarctic is an entirely

Important Information

different experience. The high elevation and large landmass make the south pole significantly colder than the North. Of course, temperature is only one piece of the Antarctic weather puzzle. Here's an overview of what weather conditions are like on Earth's southernmost destination:

Seasons in Antarctica

Antarctica only has two seasons: summer and winter. Because it's located in the southern hemisphere, Antarctica's summer is from October to February. During this time, the sun is almost always in the sky. Days rapidly get longer there in summer, until, eventually, the sun doesn't set at all. This phenomenon is called the Midnight Sun. Although there are multiple places in the northern hemisphere that experience this perpetual sunlight during half of the year, Antarctica is the only southern location where it can be seen.

January is the warmest month in Antarctica, during which average temperatures climb all the way up to 0 degrees in the Antarctic Peninsula. However, the average temperature ranges from -10 degrees celsius to -60 degrees, depending on how far into the continent you travel.

If anyone is in Antarctica once winter comes, they're staying until summer returns. Flights and ships cease travel to and from Antarctica once the weather starts to turn, as conditions become too treacherous for travel. Typically, researchers are the only people who brave the Antarctic night. This is a valuable time for astronomers, who can use complete darkness to get spectacular views of the universe. Climatologists are also busy during this time of year, tracking and comparing the temperatures on and below the continent's surface.

LATE SUMMER CRUISING IN ANTARCTICA

February - March

If you choose to go on an Antarctica cruise in February or March, you will be seeing the continent during its late summer period. This provides a variety of benefits,

including the ability to explore more thoroughly as the ice melts and breaks apart, allowing for a high chance of seeing whales on the Peninsula.

What whales might you see?

Late summer is the best time to see whales in Antarctica. It is most common to see Humpback whales, Minke whales and killer whales, though it's possible to see many other species as well. These can include blue whales, fin whales, sei whales, southern right whales and sperm whales.

What about penguins?

By March, those adorable penguin chicks are growing up. They begin to fledge and grow into their adult feathers, while their parents may already have gone out to sea to begin to prepare for their own moulting season.

Why go during this season?

If you're an explorer who wants to see as much of Antarctica as possible, choose a late-summer cruise. As the polar ice melts, you'll have access to points much farther south than you would during other travel seasons. You will certainly see some wildlife, as well, and will get to know the untouched majesty of Antarctica in this particular form.

Weather

We always suggest referring to an online source for the most up-to-date weather information for your destination/s.

FLIGHTS

Seat Selection & Frequent Flyer Points:

We do not arrange seat selection. It is essential to highlight that some airlines do not allow pre-selected seats. We strongly suggest you contact the airline directly with seating allocation requirements and/or arrive at the airport earlier to arrange your seating. While we do not add frequent flyer member details to bookings, you can do this directly with the airline once you have your flight information.

Passport Validity:

Customers must provide valid passport details either at the time of purchase or no later than 90 days before the departure date. Failure to do so may result in the cancellation of the booking. Customers will be responsible for any costs and fees incurred in this instance.

CRUISE

Embarkation / Disembarkation:

- Begins approximately 2 hours after docking.
- Due to security reasons, all guests must be on board 2 hours before sailing.
- Itineraries are subject to change at any time without notice.
- Check your specific sailing for exact departure and arrival times. All times are local to the port.

Please note: Strict Covid-19 terms may also apply regarding proof of insurance covering Covid-19 and/or vaccination. Please refer to the cruise lines' terms and conditions for further information before boarding.

Cruise Loyalty Discounts:

Please note: Travellers must contact the cruise line directly upon receiving their travel documents in order to request any membership benefits they may be entitled to.

Meals:

For meals not included, the tour leader (when available) will offer assistance with reservations, suggestions and directions to local restaurants. It is your responsibility to notify us of any dietary requests/requirements.

Please note: We will do our best to meet your requests/requirements; however, we cannot guarantee that we will always be able to.

Luggage:

You will be responsible for all your personal belongings whilst on tour. You must carry your own luggage from the vehicle to the hotel room and back to the vehicle. The driver will assist with the uploading and unloading of bags from the vehicle.

Important Information

OTHER

Mobility:

If you require wheelchair access please contact our friendly sales and service team to inquire on your behalf.

Fitness Level Required:

Adventure (and spontaneity) create some of the best travel memories. Bear in mind, your home schedules and timings might not be adhered to on tour - it's all part of the fun!

A Moderate level of fitness will be required.

Expect a moderate pace of touring with a focus on guided tours that may include full days with extended activity, guided city tours or nature walks. You will require a general level of fitness for unassisted navigation of stairs and inclines, longer distances with possible periods of standing when visiting sites, walking on sloping, uneven ground or elevations. You will be responsible for your own luggage and have the ability to board all modes of transport without assistance. Please note: Many areas may be inaccessible to wheelchairs or mobility scooters, where the unassisted use of personal walking sticks and other aids may be required. Although some assistance may be available, every traveller should be self-reliant during all aspects of their travel.

Please note: It is expected that every traveller must be self-reliant and able to undertake all aspects of their own travel. Please speak to your booking agent about your personal circumstances and any assistance requirements to ensure this tour is right for you.

Please note: If you have any concerns, please consult your healthcare provider prior to purchase/travel.

Yellow Fever:

A valid international certificate of vaccination against Yellow Fever is required in many countries. You may need to present this on arrival at the airport or border crossing. Some countries will refuse entry if you are unable to present your

certificate. It's also common for your home country to request a Yellow Fever certificate upon arrival.

You must check with your doctor well before leaving home about the Yellow Fever requirements for the countries you'll be visiting.

Sightseeing:

Please note: If entry to a site is affected by changes in operating hours or public holiday closures, your itinerary, where possible, may be adjusted, or a similar activity will be offered in its place (subject to availability).

Wildlife

TripADeal cannot guarantee animal sightings. Wildlife are unpredictable and factors such as weather conditions, predatory fear and animal movements can impact sightings.

Shopping:

Shopping overseas can be a daunting and confusing experience, especially when there is a language barrier. Please be very cautious when foreign currencies and prices are involved. If paying by credit card, please pay close attention to the amount you are being charged and keep all your receipts.

Do not make any purchases you are not comfortable with or feel pressured into. If you are uncertain or need assistance with the language barrier, please seek assistance from your Tour Guide/Leader. Please refer to our [Terms and Conditions](#) regarding shopping for further information.

Visas

Argentina

Australian passport holders are visa exempt for a stay of up to three months.

Please note: Effective immediately, all international travellers to Argentina must hold valid travel insurance with medical coverage. This insurance may be requested and verified upon arrival in the country. Argentina's public healthcare system will no longer provide free medical services to foreign nationals. It is therefore essential that you

obtain appropriate insurance before your departure.

Chile

As of 17th September 2025, tourist visas for Chile are not required if travelling on an Australian Passport. You can stay in Chile for up to 90 days without a visa. If you're unsure whether you need a visa, contact the nearest embassy or consulate of Chile.

Important:

- *Please start arranging your visa three weeks before departure to account for any delays due to consulate operating hours.*
- *Visa rules are subject to change. Please check with the nearest embassy, consulate or immigration department of the destination/s you are visiting once you receive your travel documentation to ensure you have the most up to date information.*
- *It is your responsibility to be travel-ready and ensure that you are aware and comply with any destination or travel requirements, including the validity of all required travel documents.*
- *Passengers who are not Australian citizens must also check with the respective consulate or visa agency to determine what their visa requirements are and what personal identification is required.*
- *It is also important to note that some areas of employment, such as journalism, government authorities and charity organisations, may have additional restrictions in applying for visas. This may, in turn, affect the type of application required.*

Travel Insurance

Embarking on your next trip is exciting, and while you hope the unexpected does not happen, it is best to be prepared. We strongly recommend you take out travel insurance when making your booking. Whether it's a potential medical emergency, a flight cancellation, a delayed suitcase, or an unforeseen event, it's important to ensure you're adequately protected. For more information or advice visit <https://www.tripadeal.com.au/travel->

Important Information

[insurance](#)

Schedule Of Fees

Voluntary Changes

This includes booking changes requested by you, including but not limited to those changes requiring an airline ticket or a Purchase Confirmation reissue.

- Changes - \$100 per booking and any additional charges applied by the airline/cruise company/accommodation/other travel providers.

Name Changes Due To Passenger Error

- If the incorrect name has been provided, charges of \$100 per booking and any additional charges applied by the airline/cruise company/accommodation/other travel providers.

Supplier Fees

In the event the tour package you have purchased is unable to proceed, and/or a Travel Supplier is unable to fulfil the tour due to external circumstances (Limitation of Liability e.g. a Force Majeure event), there may be a fee or amount of money that is withheld by our Suppliers and is unrecoverable. This may be due to non-refundable airline tickets, cancellation penalties with cruise cabins or unrecoverable payments with our land/accommodation partners. If refunds are not available from Suppliers, we will endeavour to obtain a travel credit on the best terms available and communicate these outcomes to you. In the event we are unable to obtain a refund or travel service credit, or part thereof, this cost is passed on to the customer as a Supplier Fee.