



Seychelles to Portugal Grand Voyage

PORT LOUIS • CAPE TOWN • TENERIFE

The Offer

Embark on two back-to-back luxury voyages, cruising from the tropical shores of the Seychelles to Portugal. Set sail aboard Silversea's Silver Dawn for 17 nights, sailing to Mauritius, Reunion and South Africa. Join a 23-night cruise docking in Namibia, cruising north to Spain's Canary Islands, Portugal's Madeira and more.

Land on the sun-kissed island of Mahe for three nights exploring the Seychelles before boarding a 17-night cruise aboard Silversea's Silver Dawn. Cruise through tropic islands, then set sail for the coral gardens of Mauritius and volcanic shores of Reunion Island. Unwind by the pool during cruising days as you sail towards destinations that offer cultural experiences, wildlife encounters, beach days, city exploration and more. Dock in South Africa's Durban, East London and Port Elizabeth, before an extended stay in Cape Town overnight. Soak in the breathtaking views of iconic Table Mountain and take the chance to explore its stunning blue coastline further.

The adventure continues aboard Silver Dawn with a 23-night voyage from Cape Town to Lisbon, Portugal. Cruise first to Luderitz in search of penguins and dolphins, then be greeted by flocks of flamingos and magnificent sand dunes

in Namibia's Walvis Bay. Stop by Angola and The Gambia, before cruising into the Canary Islands' Spanish sunshine. Enjoy an extended visit to the lush, yet dramatic cliffs of Madeira's capital Funchal. Cruise on to the stunning Portuguese coast and the Algarve paradise of Portimao, before disembarking in Lisbon. Enjoy a few days among the UNESCO-listed landmarks, catch a tram and make sure to try Portugal's famous Pastel de Nata (Portuguese custard tarts) before your flight home.

Includes return international full-service flights, two back-to-back cruises aboard Silversea's Silver Dawn, 5 nights of 5-star hotel accommodation, 124 meals, including all while cruising and more.

Want more? Extend your adventure with Arrive Early in Mahe, Seychelles, & Stay Behind in Lisbon, Portugal, options available.

Offer available for a limited time or until sold out. TRIP A DEAL PTY LTD: 50149240433

Updated: 03 Oct 2025 15:43:35

Have a question about this deal? We're here to help.
Call our friendly team on 1300 158 912



48-DAY CRUISE PACKAGE | SEYCHELLES TO PORTUGAL GRAND VOYAGE

The Map



Offer available for a limited time or until sold out. TRIP A DEAL PTY LTD: 50149240433

Updated: 03 Oct 2025 15:43:35

Have a question about this deal? We're here to help.
Call our friendly team on 1300 158 912





48-DAY CRUISE PACKAGE | SEYCHELLES TO PORTUGAL GRAND VOYAGE

The Itinerary

Day 1 Australia (or New Zealand) - Mahe, Seychelles

Today, make your own way to the airport for your international flight to Mahe, Seychelles.

Meals included: In-Flight

Day 2 Mahe, Seychelles

Upon arrival in Mahe, Seychelles join an arranged transfer to the hotel for a three night stay. Once checked in the remainder of the day is at leisure.

Few places on Earth can claim to have been as blessed by nature as Mahe. Set in the remote Seychelles archipelago over 1,500 kilometres east of Mombasa, Mahe is the biggest of the 115 islands and is home to so many stunning attractions, you won't know where to begin. The Seychelles are the destination of a lifetime, with cerulean seas, miles and miles of beach, lush, tropical jungle, and surreal, natural beauty as far as the eye can see.

Mahe boast 68 pristine beaches, it is dominated by the towering peaks of the Morne Seychellois National Park that takes up over 20% of the island and is home to a vast amount of endemic flora and fauna, including the ultra-rare Seychelles Scops-owl. Unsurprisingly, the crystal-clear waters are a diver's heaven, promising a colourful cornucopia of underwater life.

Frenchman Lazare Picault explored the as-yet-unnamed islands in 1742, however, it took a further 14 years for the French to lay claim to the islands. Corneille Morphey, captain of the the French naval ship Le Cerf, christened the archipelago after Vicomte Moreau de Séchelles. He did this by setting down a Stone of

Possession, which is on display in the National Museum. A handful of first settlers arrived in 1770 however this has swelled to today's 80,000 Seychellois.

Overnight: Savoy Seychelles Resort and Spa or similar, Mahe Island, Seychelles

Meals included: None

Day 3 Mahe, Seychelles

Spend the day at leisure in this tropical paradise offering a perfect blend of stunning beaches, lush hiking trails, and vibrant Creole culture. Unwind on beautiful beaches like Beau Vallon or Anse Intendance, explore scenic hikes such as Morne Blanc or Anse Major, and enjoy fresh seafood and local dishes in the charming capital, Victoria. Don't miss snorkelling in crystal-clear waters or a visit to the Takamaka rum distillery for a taste of island life. Whether you seek adventure or relaxation, Mahe has something special for every traveller.

Overnight: Savoy Seychelles Resort and Spa or similar, Mahe Island, Seychelles

Meals included: Breakfast





48-DAY CRUISE PACKAGE | SEYCHELLES TO PORTUGAL GRAND VOYAGE

The Itinerary

Day 4 Mahe, Seychelles

Spend another day at leisure on Mahe, Seychelles. This tropical paradise offers a perfect blend of stunning beaches, lush hiking trails, and vibrant Creole culture. Unwind on beautiful beaches like Beau Vallon or Anse Intendance, explore scenic hikes such as Morne Blanc or Anse Major, and enjoy fresh seafood and local dishes in the charming capital, Victoria. Don't miss snorkelling in crystal-clear waters or a visit to the Takamaka rum distillery for a taste of island life. Whether you seek adventure or relaxation, Mahe has something special for every traveller.

Overnight: Savoy Seychelles Resort and Spa or similar, Mahe Island, Seychelles

Meals included: Breakfast

Day 5 Mahe, Seychelles - embark Silver Dawn

Departs: 23:00

After breakfast this morning join an arranged transfer to Port Victoria cruise terminal for your embarkation on Silversea's stunning Silver Dawn. Once on board the remainder of the day is at leisure exploring this amazing ship.

Overnight: Silversea's Silver Dawn

Meals included: Breakfast; Dinner

Day 6 Praslin, Seychelles

Arrives: 08:00 - **Departs:** 17:00

Loved by those who like their paradise just as nature intended, Praslin is one of the Seychelles' most beautiful islands. And why? Anse Lazio - the island's beach is a repeated winner of world's best, making the island a pull for travellers who want to go the extra mile to find an unblemished island nirvana. The tiny island of Praslin is the second largest of the Seychelles islands, at just 11 kilometres long and 4 kilometres wide, packed with island flora and fauna and surrounded by sea.

The island's original name is Isle de Palmes and it's not hard to see why. The lush jungle that makes up the island's interior has it all from bubbling brooks, winding paths to towering trees that provide welcome respite from the sun. The jungle heart is home to the endemic Black Parrot (fewer than 1,000 of these birds are in existence) and the famous Coco de Mer, the world's heaviest nut (25 kilograms), grows abundantly here in the wild.

Overnight: Silversea's Silver Dawn

Meals included: Breakfast; Lunch; Dinner

Day 7 Cruising

Days at sea are the perfect opportunity to relax and unwind onboard. So whether that is going to the gym, visiting the spa, whale-watching, catching up on your reading, or simply topping up your tan, these blue sea days are the perfect balance to busy days spent exploring shoreside.

Overnight: Silversea's Silver Dawn

Meals included: Breakfast; Lunch; Dinner



48-DAY CRUISE PACKAGE | SEYCHELLES TO PORTUGAL GRAND VOYAGE

The Itinerary

Day 8 Cruising

Overnight: Silversea's Silver Dawn

Meals included: Breakfast; Lunch; Dinner

Day 9 Port Louis, Mauritius (overnight)

Arrives: 08:00 - Overnight

Mauritius boasts a unique marine environment, surrounded by one of the largest unbroken coral reefs on the planet, conservationists are now campaigning to protect its white coral sand beaches and fragile ecosystem. Located just off the east coast of Madagascar, Mauritius is fast making a name for itself as the tropical paradise of the Indian Ocean. This volcanic island approximately 10 million years old, and Mauritius is thought to be the peak of an enormous sunken volcanic chain stretching from the Seychelles to Réunion. Volcanic lakes and inactive craters can be found scattered throughout the island.

Mauritius remained uninhabited until the end of the 16th century when Dutch colonists settled on the island, naming it after Prince Maurice of Nassau. The Dutch colonial period saw the development of thriving sugar cane plantations, continued by the French who expanded into indigo, cloves, nutmeg, and other spices. The island was ceded to the British at the end of the Napoleonic Wars, until gaining independence in 1968. Mauritius is now a vibrant cultural mix with impressive mountains, boundless sugar cane plantations, and some of the World's most exquisite beaches and aquamarine lagoons.

Overnight: Silversea's Silver Dawn

Meals included: Breakfast; Lunch; Dinner

Day 10 Port Louis, Mauritius

Departs: 19:00

Mauritius boasts a unique marine environment, surrounded by one of the largest unbroken coral reefs on the planet, conservationists are now campaigning to protect its white coral sand beaches and fragile ecosystem. Located just off the east coast of Madagascar, Mauritius is fast making a name for itself as the tropical paradise of the Indian Ocean. This volcanic island approximately 10 million years old, and Mauritius is thought to be the peak of an enormous sunken volcanic chain stretching from the Seychelles to Réunion. Volcanic lakes and inactive craters can be found scattered throughout the island.

Mauritius remained uninhabited until the end of the 16th century when Dutch colonists settled on the island, naming it after Prince Maurice of Nassau. The Dutch colonial period saw the development of thriving sugar cane plantations, continued by the French who expanded into indigo, cloves, nutmeg, and other spices. The island was ceded to the British at the end of the Napoleonic Wars, until gaining independence in 1968. Mauritius is now a vibrant cultural mix with impressive mountains, boundless sugar cane plantations, and some of the World's most exquisite beaches and aquamarine lagoons.

Overnight: Silversea's Silver Dawn

Meals included: Breakfast; Lunch; Dinner

Offer available for a limited time or until sold out. TRIP A DEAL PTY LTD: 50149240433

Updated: 03 Oct 2025 15:43:35

Have a question about this deal? We're here to help.
Call our friendly team on 1300 158 912



48-DAY CRUISE PACKAGE | SEYCHELLES TO PORTUGAL GRAND VOYAGE

The Itinerary

Day 11 Pointe des Galets, Reunion

Arrives: 08:00 - Departs: 18:00

Feel the excitement as you enter the port of Pointe des Galets in the northwest of Reunion Island, this gorgeous tropical island is yours to discover. Immerse yourself in local life by visiting one of the weekly markets, the perfume of vanilla beans, coffee, and more straight from the plantations will awaken your senses. Try the fresh tropical fruit piled up on the stalls and delicious local snacks on offer relishing the quintessential, irresistible flavours of Reunion.

If it's relaxing beach time you're after, head for the Boucan Canot beach, one of the island's most beautiful and safest beaches to swim. The expanse of fine white sand is an invitation to unwind, palm groves offer green relief, bars, and cafes a place to sip on ice-cold drinks whilst contemplating the vast Indian ocean before you. To explore under the waves, team up with one of the many dive centres that can show you shipwrecks and volcanic caves. Snorkelers can see sea turtles, colourful corals, and tropical fish of every shade of the rainbow.

Saint-Denis the capital of Reunion Island a mere 20 minutes away, is a must-visit. A rich cultural heritage and wonderful location makes a walk through the historic centre a joy. Admire the beautiful 19th century Creole architecture, and stroll the length of the elegant Rue de Paris. There are plenty of historic monuments to visit and peaceful shady gardens to unwind in, and of course, a glass of fine rum is an essential part of a stay on the island. So raise your glass to this paradise – Santé!

Overnight: Silversea's Silver Dawn

Meals included: Breakfast; Lunch; Dinner

Day 12 Cruising

Overnight: Silversea's Silver Dawn

Meals included: Breakfast; Lunch; Dinner

Day 13 Cruising

Overnight: Silversea's Silver Dawn

Meals included: Breakfast; Lunch; Dinner

Day 14 Cruising

Overnight: Silversea's Silver Dawn

Meals included: Breakfast; Lunch; Dinner

Day 15 Durban, South Africa

Arrives: 08:00 - Departs: 19:00

Welcome to South Africa's third most popular city with its vibrant waterfront, complete with street performers and sand artists. This melting pot of ethnicity, with all cultures from Zulu to Indian find a home in the laid-back lifestyle that has locals calling it simply "Durbs". Surrounded by sweeping landscapes and blessed with a clement climate, visitors to Durban will quickly see the reason people love it so much is a combination of all of the above.

Durban has always been a beach city, but a recent revamp of the promenade has brought with it some fantastic eateries which serve up all kinds of "chow" from traditional bunny chow to

Offer available for a limited time or until sold out. TRIP A DEAL PTY LTD: 50149240433

Updated: 03 Oct 2025 15:43:35

Have a question about this deal? We're here to help.
Call our friendly team on 1300 158 912



48-DAY CRUISE PACKAGE | SEYCHELLES TO PORTUGAL GRAND VOYAGE

The Itinerary

bobotie, (a sweet spiced mince dish with egg topping). Expect Asian influences wherever you go, too. Durban has the largest Indian population outside of India.

Historically, the city of eThekweni – Durban in Zulu – was inhabited by hunter-gatherers as early as 100,000 BC. It was first sighted by Vasco de Gama in 1497, but it was not until 1824 that the British settlers raised the Union Jack. This was after King Shaka gifted a “a 40-kilometre strip of coast 160 kilometres in depth” to Henry Francis Fynn after Fynn helped him recover from a stab wound. It remained part of the British Commonwealth until 1960, when it became part of the Republic of South Africa. The city's Euro-African heritage remains to this day.

Overnight: Silversea's Silver Dawn

Meals included: Breakfast; Lunch; Dinner

Day 16 Cruising

Overnight: Silversea's Silver Dawn

Meals included: Breakfast; Lunch; Dinner

Day 17 East London, South Africa

Arrives: 07:00 - Departs: 19:00

The British built East London port on the Buffalo River in 1847 to service their military forts and troops during land disputes with the Xhosa people. This ancient landscape is home to some of the world's oldest known fossilised human footprints, dated at approximately 124,000 years. Most of the eight million Xhosa people live in Eastern Cape Province, with a rich and ongoing culture that celebrates vibrant clothing, music and dance. Beaded jewellery is important for many reasons - as decoration for dancers, special ceremonies and indicating the social status of women.

The city has several natural attractions including sandy beaches and water activities on the sheltered and picturesque Buffalo River. Like many areas of South Africa, game parks are popular for local wildlife lovers. Speaking of nature, near to East London is where the first living (well freshly dead in an angler's catch) coelacanth known to science was found in 1938. This lobe-finned fish had been only known from 66-million-year-old fossils. It is more closely related to four-legged land animals than typical ray-finned fish. East London is a place that certainly has history.

Overnight: Silversea's Silver Dawn

Meals included: Breakfast; Lunch; Dinner





48-DAY CRUISE PACKAGE | SEYCHELLES TO PORTUGAL GRAND VOYAGE

The Itinerary

Day 18 Port Elizabeth, South Africa (overnight)

Arrives: 07:00 - Overnight

Port Elizabeth is an uncut gem of a destination, it is a city of many faces. From a natural haven with unspoiled beaches, rolling sand dunes, and the warm Indian Ocean lapping at your feet, to a post-industrial migrant city with a rich heritage. Port Elizabeth is also called Nelson Mandela Bay, and there is much here that celebrates him – starting with Route 67, a collection of 67 artworks honouring the 67 years that Mandela dedicated to achieving South Africa's freedom.

Known as “the friendly city”, Port Elizabeth is enjoying an urban regeneration, spurred on by the youth of the region who want to put it back on the map. Think vibrant creative projects spilling out wherever you go, a pedestrianised central zone, galleries selling local artworks, restaurants serving South African fusion food, award-winning buildings that house museums, and restored Victorian terraces.

Port Elizabeth's proximity to the excellent nature parks at Addo and Lalibela makes it an ideal destination for game lovers. Both of these parks are a little way from Port Elizabeth (70 and 90 kilometres east respectively) but both offer a chance to revel in South Africa's no-holds-barred natural beauty and a chance to see the fabled Big Five. Addo even boasts the Big Seven (lion, elephant, rhino, buffalo, and leopard, as well as the great white shark and Southern right whale).

Overnight: Silversea's Silver Dawn

Meals included: Breakfast; Lunch; Dinner

Day 19 Port Elizabeth, South Africa

Departs: 19:00

Port Elizabeth is an uncut gem of a destination, it is a city of many faces. From a natural haven with unspoiled beaches, rolling sand dunes, and the warm Indian Ocean lapping at your feet, to a post-industrial migrant city with a rich heritage. Port Elizabeth is also called Nelson Mandela Bay, and there is much here that celebrates him – starting with Route 67, a collection of 67 artworks honouring the 67 years that Mandela dedicated to achieving South Africa's freedom.

Known as “the friendly city”, Port Elizabeth is enjoying an urban regeneration, spurred on by the youth of the region who want to put it back on the map. Think vibrant creative projects spilling out wherever you go, a pedestrianised central zone, galleries selling local artworks, restaurants serving South African fusion food, award-winning buildings that house museums, and restored Victorian terraces.

Port Elizabeth's proximity to the excellent nature parks at Addo and Lalibela makes it an ideal destination for game lovers. Both of these parks are a little way from Port Elizabeth (70 and 90 kilometres east respectively) but both offer a chance to revel in South Africa's no-holds-barred natural beauty and a chance to see the fabled Big Five. Addo even boasts the Big Seven (lion, elephant, rhino, buffalo, and leopard, as well as the great white shark and Southern right whale).

Overnight: Silversea's Silver Dawn

Meals included: Breakfast; Lunch; Dinner

Offer available for a limited time or until sold out. TRIP A DEAL PTY LTD: 50149240433

Updated: 03 Oct 2025 15:43:35

Have a question about this deal? We're here to help.
Call our friendly team on 1300 158 912





48-DAY CRUISE PACKAGE | SEYCHELLES TO PORTUGAL GRAND VOYAGE

The Itinerary

Day 20 Cruising

Overnight: Silversea's Silver Dawn

Meals included: Breakfast; Lunch; Dinner

Day 21 Cape Town, South Africa (overnight)

Arrives: 07:00 : Overnight

Sprawling across endless, staggeringly blue coastline, and watched over by the iconic Table Mountain, Cape Town is without doubt one of the world's most beautiful cities. A blend of spectacular mountain scenery, multiculturalism, and relaxed ocean charm awaits in the Mother City, where you can venture out to rolling vineyards, dine in laid-back sea suburbs, or spend days exploring cool urban culture.

Why not take a cable car to the top of Table Mountain, where from the summit, 1,067 metres above sea level, the panoramic vistas of the city roll down towards the ocean. Another heavenly perspective can be found at the top of Lion's Head's tapering peak, where a sharp hike and an early start rewards you with views of the morning sun painting Table Mountain honey-gold - some of Cape Town's finest.

The city's beauty is counterpointed by the ominous Robben Island, which sits seven kilometres offshore. Discover the recent history of this offshore prison and share Mandela's long walk to freedom.

Cape Town's glorious sunshine and inviting blue rollers can be a little deceiving though - these vast oceans roll in straight from Antarctica's icy chill. The cool water has upsides though, bringing a colony of adorably cute African penguins to Boulders Beach.

Boarded walkways offer the perfect vantage point to see the cute creatures dipping into the sea and lounging in the sun. Or you could take a journey to the end of Africa at the Cape of Good Hope, where you can stand at the bottom of this mighty continent, watching out over the merging waves of the Atlantic and Indian Oceans.

Overnight: Silversea's Silver Dawn

Meals included: Breakfast; Lunch; Dinner

Day 22 Cape Town, South Africa

After breakfast this morning, disembark. At the appropriate time re-embark aboard the stunning Silver Dawn for your onward cruise from Cape Town, South Africa to Lisbon, Portugal.

If there is a change of suite required your butler will transfer your luggage across to your newly assigned suite for your second voyage.

Overnight: Silversea's Silver Dawn

Meals included: Breakfast; Lunch; Dinner

Day 23 Cruising

Overnight: Silversea's Silver Dawn

Meals included: Breakfast; Lunch; Dinner

Offer available for a limited time or until sold out. TRIP A DEAL PTY LTD: 50149240433

Updated: 03 Oct 2025 15:43:35

Have a question about this deal? We're here to help.
Call our friendly team on 1300 158 912



48-DAY CRUISE PACKAGE | SEYCHELLES TO PORTUGAL GRAND VOYAGE

The Itinerary

Day 24 Luderitz, Namibia

Arrives: 08:00 - Departs: 18:00

The scorched desert that surrounds Luderitz means the city's charming, yet quirky, collection of German art nouveau architecture couldn't look more unusually placed along the Namibian coastline.

See gangs of playful penguins skipping across the waves, pink flamingos wading by the coast, and dolphins leaping into the air near Penguin Island and Seal Island. Inland from Luderitz is Kolmanskop, the site of a famous diamond mine and ghost town.

Overnight: Silversea's Silver Dawn

Meals included: Breakfast; Lunch; Dinner

Day 25 Walvis Bay, Namibia (overnight)

Arrives: 12:00 - Overnight

Home to a beautiful lagoon, washed pale pink by a colony of resident flamingos, Walvis Bay is a colourful African port of call where you can meet some of the continent's most flamboyant wildlife. A small Namibian city on the Atlantic coast of southern Africa, the city takes its name from Whale Bay - which gives a clue as to the wonderful wildlife-watching opportunities available here. The deep-water blossoms with rich levels of plankton, drawing curious marine mammals in large numbers to feast. As Namibia's only deep-water harbour, Walvis Bay is an important fishing centre for the country, and its sunny shores and natural wonders make it a popular spot for holidaymakers.

Walvis Bay is a bird lover's paradise, and hundreds of thousands of birds assemble here, to make the most of the tidal lagoon. Watch for preening crowds, admire the flamingos, herons and

carefully treading wading bird species. Meet the pelicans at nearby Pelican Point - a sandy spit, which calms the waves heading for the waterfront. With whales and dolphins frolicking offshore too, there's a wide variety of wildlife to see here.

On the cusp of the sun-scorched Namib Desert beyond, Dune 7 rises up to form the highest sand dune in the country, with sands piling up 380 metres. Why not try sand skiing, sand-boarding or climb to the top for views from the dune's heights, or perhaps even take a flight tour to see further afield and spot some of the extraordinary land animals that roam the landscapes.

Overnight: Silversea's Silver Dawn

Meals included: Breakfast; Lunch; Dinner

Day 26 Walvis Bay, Namibia

Departs: 19:00

Home to a beautiful lagoon, washed pale pink by a colony of resident flamingos, Walvis Bay is a colourful African port of call where you can meet some of the continent's most flamboyant wildlife. A small Namibian city on the Atlantic coast of southern Africa, the city takes its name from Whale Bay - which gives a clue as to the wonderful wildlife-watching opportunities available here. The deep-water blossoms with rich levels of plankton, drawing curious marine mammals in large numbers to feast. As Namibia's only deep-water harbour, Walvis Bay is an important fishing centre for the country, and its sunny shores and natural wonders make it a popular spot for holidaymakers.

Walvis Bay is a bird lover's paradise, and hundreds of thousands of birds assemble here, to make the most of the tidal lagoon. Watch for preening crowds, admire the flamingos, herons and



48-DAY CRUISE PACKAGE | SEYCHELLES TO PORTUGAL GRAND VOYAGE

The Itinerary

carefully treading wading bird species. Meet the pelicans at nearby Pelican Point - a sandy spit, which calms the waves heading for the waterfront. With whales and dolphins frolicking offshore too, there's a wide variety of wildlife to see here.

On the cusp of the sun-scorched Namib Desert beyond, Dune 7 rises up to form the highest sand dune in the country, with sands piling up 380 metres. Why not try sand skiing, sand-boarding or climb to the top for views from the dune's heights, or perhaps even take a flight tour to see further afield and spot some of the extraordinary land animals that roam the landscapes.

Overnight: Silversea's Silver Dawn
Meals included: Breakfast; Lunch; Dinner

Day 27 Cruising

Overnight: Silversea's Silver Dawn
Meals included: Breakfast; Lunch; Dinner

Day 28 Cruising

Overnight: Silversea's Silver Dawn
Meals included: Breakfast; Lunch; Dinner

Day 29 Luanda, Angola

Arrives: 07:00 - Departs: 23:59

Luanda is the boisterous coastal capital city of Angola, and one of the world's most expensive cities. This oil-driven community has recovered slowly from years of unrest, and today offers visitors a range of experiences, from 16th century forts, a restaurant-lined oceanfront promenade to hunting for handmade souvenirs in bustling local markets.

Overnight: Silversea's Silver Dawn
Meals included: Breakfast; Lunch; Dinner

Day 30 Cruising

Overnight: Silversea's Silver Dawn
Meals included: Breakfast; Lunch; Dinner

Day 31 Cruising

Overnight: Silversea's Silver Dawn
Meals included: Breakfast; Lunch; Dinner

Day 32 Cruising

Overnight: Silversea's Silver Dawn
Meals included: Breakfast; Lunch; Dinner

Day 33 Cruising



48-DAY CRUISE PACKAGE | SEYCHELLES TO PORTUGAL GRAND VOYAGE

The Itinerary

Overnight: Silversea's Silver Dawn

Meals included: Breakfast; Lunch; Dinner

Day 34 Cruising

Overnight: Silversea's Silver Dawn

Meals included: Breakfast; Lunch; Dinner

Day 35 Cruising

Overnight: Silversea's Silver Dawn

Meals included: Breakfast; Lunch; Dinner

Day 36 Banjul, The Gambia

Arrives: 08:00 - **Departs:** 18:00

Emerging from The Gambia's wild mangrove swamps, Banjul sits at the spot where the River Gambia's yawning mouth opens up to meet the salty tang of the Atlantic. Punctuated by a soaring 35-metre arched gateway, The Gambia's capital is a place of scorched sunlight and faded colonial history, which provides flavours of laidback beachside relaxation mixed with exotic old-world African seaport charm.

Despite its capital status, Banjul, with its soft lyrical name, often has more of a village feel to it. Explore the tight-knit labyrinth of Albert Market where the sounds of bartering rise to a pitched crescendo in the early morning - the perfect time to plunge in for a dizzying hit of sensory overload. A beloved gathering spot since the 19th century, the market is a riot of colour, with stalls buckling below the weight of print fabrics, salt-crusted fish, and

colourful textiles. While the market can be a disorientating whirl of activity, the city as a whole tends to move at a more lackadaisical, laidback pace.

Visit Oyster Creek, to let an afternoon float by fishing rod in hand, as the sunlight slants across the water. Cormorants and pelicans step gingerly across the sinking mudflats that line the riverbank. Those craving cultural immersion could visit a local home for a cooking experience, helping to descale fresh red snapper, sipping baobab juice, and mixing spices into an authentic benachin pot.

Overnight: Silversea's Silver Dawn

Meals included: Breakfast; Lunch; Dinner

Day 37 Cruising

Overnight: Silversea's Silver Dawn

Meals included: Breakfast; Lunch; Dinner

Day 38 Cruising

Overnight: Silversea's Silver Dawn

Meals included: Breakfast; Lunch; Dinner

Day 39 Las Palmas, Canary Islands, Spain

Arrives: 08:00 - **Departs:** 23:00

Watch the stars glittering at night, climb jungled volcano calderas, and explore the historical allure of the sun-gorged island of Gran Canaria. The sprawling capital of the Canaries is Spain's ninth-biggest city, stretched out along the sparkling coastline.



48-DAY CRUISE PACKAGE | SEYCHELLES TO PORTUGAL GRAND VOYAGE

The Itinerary

Unwind on the city's urban beaches, before discovering the bustling, authentic tapas bars. An offshore barrier of lava strips waves of their power, making Las Canteras's urban beach one of the best and calmest in the Canaries. Strap on your snorkel to explore the seabed, which blooms with colourful fish and tropical reefs. Or, settle back to soak in the warm glow of one of the best climates in the world, while reclining on the soft sand, which arcs along the capital's fringe.

At the other end of town, La Vegueta old town is a charming stroll along cobbled streets, wandering past decorative doorways and balconies that beg to be photographed. The narrow 15th century streets take on an extra romantic air in the evenings, as lanterns cast a soft glow over them. Calle Colon offers a hint of the street's history, and it's here where the handsome colonial house and now museum of Christopher Columbus stands. Columbus stayed here to recuperate, between his boundary-redefining voyages.

Out of Las Palmas, diverse and exciting volcanic landscapes await, including the spectacular Caldera de Bandama, which plunges 200 metres into the earth. From the summit, views stretch out to the looming island of Fuerteventura unravel. You could also discover pretty white-wash fishing villages, dazzling gardens, and the sun-bathed vineyards that produce Gran Canaria's crispest wines.

Overnight: Silversea's Silver Dawn
Meals included: Breakfast; Lunch; Dinner

Day 40 Santa Cruz de Tenerife, Spain

Arrives: 08:00 - Departs: 19:00

Although this busy port city is smaller and quieter than Las Palmas in Gran Canaria, Santa Cruz has its own share of elegant monuments. Until 1837, the island's capital was La Laguna, not Santa Cruz, with only a few of the buildings in the city centre older than that. At the busy Plaza de España, several pedestrian streets lead north and to the west of the port, where you'll find the city's stunning auditorium and maritime park. A real highlight of the city is its ramblas, long tree-lined boulevards that fall steeply from the north end of the city to the sea.

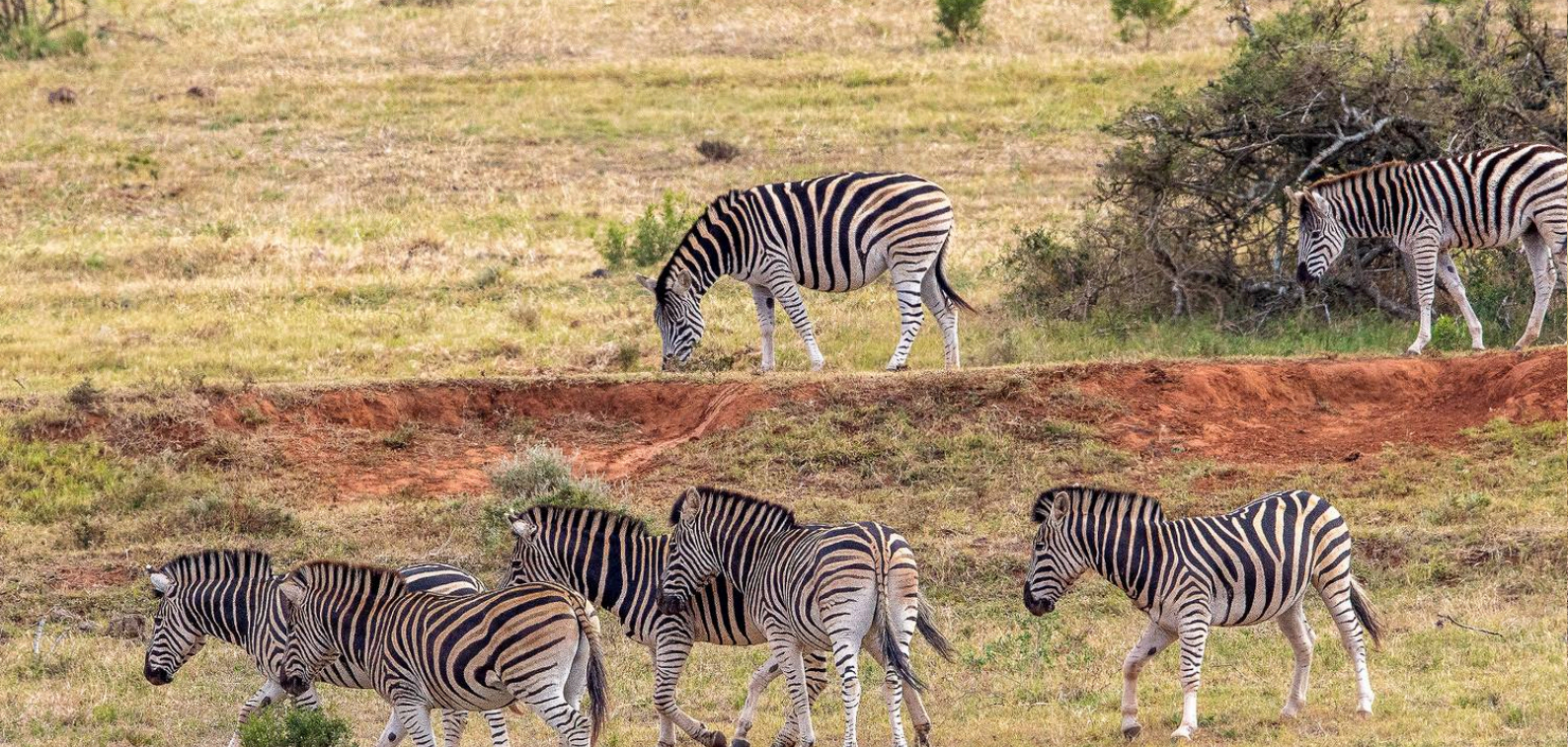
Overnight: Silversea's Silver Dawn
Meals included: Breakfast; Lunch; Dinner

Day 41 Funchal, Portugal (overnight)

Arrives: 14:30 - Overnight

Bedecked with dramatic cliffs, fertile mountains, and sun-gorged beaches, Madeira is a lush, colourful island of plants, paradise, and Portuguese-flavoured pleasures. Bathed in year-round sunshine, Funchal - the lowkey capital of Madeira - is perfect for slowing the pace, and toasting the thrilling scenery with a bottle of the island's famous wine.

Narrow, cobblestone streets line the old town, where whitewashed buildings, iron-wrought balconies, and tiled patterns carry echoes of Lisbon. Rua de Santa Maria is the city's oldest street, and the doors have been vividly painted by local artists. Sit for a drink, to sample your choice of Madeira's renowned wines - Boal is the ideal option for those with a sweeter tooth.



48-DAY CRUISE PACKAGE | SEYCHELLES TO PORTUGAL GRAND VOYAGE

The Itinerary

You'll also find Corpo Santo Chapel here, one of the few remaining buildings to have survived from the 15th century. Blossoming parks and gardens splash colour around, and the sweet smell of pollen lingers in Parque de Santa Catarina. Look out over Funchal Harbor between the fountains and blooming flower beds, as ducks and swans enjoy leisurely days on the lake. Madeira Botanical Garden awaits in the hills over the city, along with Palheiro Garden - a sophisticated and elegantly landscaped English garden, 500 metres above sea level.

For an even more dramatic view of this gorgeous setting, head up to Cap Girao - a rusty-red cliff, with a cable car strung up to its sheer drop. The cliff falls away vertically to the vivid blue waters below. Or head down to the sea, to enjoy Funchal's gorgeous pebble beaches rustling, framed by colossal, craggy cliffs.

Overnight: Silversea's Silver Dawn

Meals included: Breakfast; Lunch; Dinner

Day 42 Funchal, Portugal

Departs: 18:00

Bedecked with dramatic cliffs, fertile mountains, and sun-gorged beaches, Madeira is a lush, colourful island of plants, paradise, and Portuguese-flavoured pleasures. Bathed in year-round sunshine, Funchal - the lowkey capital of Madeira - is perfect for slowing the pace, and toasting the thrilling scenery with a bottle of the island's famous wine.

Narrow, cobblestone streets line the old town, where whitewashed buildings, iron-wrought balconies, and tiled patterns carry echoes of Lisbon. Rua de Santa Maria is the city's oldest street, and the doors have been vividly painted by local

artists. Sit for a drink, to sample your choice of Madeira's renowned wines - Boal is the ideal option for those with a sweeter tooth.

You'll also find Corpo Santo Chapel here, one of the few remaining buildings to have survived from the 15th century. Blossoming parks and gardens splash colour around, and the sweet smell of pollen lingers in Parque de Santa Catarina. Look out over Funchal Harbor between the fountains and blooming flower beds, as ducks and swans enjoy leisurely days on the lake. Madeira Botanical Garden awaits in the hills over the city, along with Palheiro Garden - a sophisticated and elegantly landscaped English garden, 500 metres above sea level.

For an even more dramatic view of this gorgeous setting, head up to Cap Girao - a rusty-red cliff, with a cable car strung up to its sheer drop. The cliff falls away vertically to the vivid blue waters below. Or head down to the sea, to enjoy Funchal's gorgeous pebble beaches rustling, framed by colossal, craggy cliffs.

Overnight: Silversea's Silver Dawn

Meals included: Breakfast; Lunch; Dinner

Day 43 Cruising

Overnight: Silversea's Silver Dawn

Meals included: Breakfast; Lunch; Dinner





48-DAY CRUISE PACKAGE | SEYCHELLES TO PORTUGAL GRAND VOYAGE

The Itinerary

Day 44 Portimao, Portugal

Arrives: 08:00 - Departs: 18:00

Sprawl out and relax across thick wedges of glorious, golden sands, in Portugal's sun-worshipping paradise. Portimão is a beachy heaven and a perfect encapsulation of the Algarve's Atlantic appeals, offering easy access to the wonderful Praia da Rocha. Head straight for the long and wide expanse of this famous beach, where you can kick back and enjoy soft, honey-coloured sands and gentle waves rolling ashore. A spectacular and spacious sandy expanse – located at the point where the Arade River unloads into the Atlantic – relax, or wander the wooden boardwalk to a string of neighbouring beaches, as you explore among dramatic, tank-like rock formations. Taste juicy hauls of sardines, cooked over open fires, with glasses of wine pressed from the vineyards nearby - as you lavish under the sunshine of the Algarve's prime holiday region.

Surrounded by offbeat fishing villages, stunning coastlines, and quaintly tiled old towns, there is a rich medley of life, culture, and flavours to indulge in. Attractive mosaics pattern the scenic Ribeirinha promenade, breathing new life into Portimão's rugged old docks, and creating a charming riverside stroll that leads to the showpiece beach. Elsewhere, the arches and sea-eroded limestone stacks of the monumental Ponta da Piedade coastline are close by, or you can make for Silves, a historical former capital of the Kingdom of the Algarve, crowned with a soaring sandy castle. The Moorish trading outpost of Lagos is also within reach, where you can visit a coastline dotted with gaping sea caves, set below crumbling coastal fortresses.

Overnight: Silversea's Silver Dawn

Meals included: Breakfast; Lunch; Dinner

Day 45 Lisbon, Portugal disembark

Arrives: 07:00 - Disembark

After breakfast this morning, disembark Silver Dawn and join an arranged transfer to your hotel for a two night city stay. Once checked in the remainder of the day is at leisure.

Overnight: PortoBay Liberdade or similar, Lisbon, Portugal

Meals included: Breakfast

Day 46 Lisbon, Portugal

Enjoy the day at leisure in Portugal's capital, a glorious mosaic of beauty, freedom, and authenticity. Known for the seven hills it spreads across, and its stirring fado music, Lisbon is a pastel-coloured blend of houses and beautiful tile artworks - and this creative city strikes a perfect harmony between natural and manmade beauty.

Stroll along Alfama's steep, cobbled streets as you explore one of the city's oldest neighbourhoods - where each house and door could be its own photograph. Look for the decorative tiles, with the distinctive blues and whites of Azulejo ceramics, and visit the dedicated museum to learn more.

Afterwards, wind up to Sao Jorge Castle, where views out across Lisbon's red rooftops unravel. Just one of many majestic viewpoints, you can also seek out Miradouro da Graça for perhaps Lisbon's finest panorama, with the copper-coloured suspension bridge stretching over sparkling water beyond the sea of buildings. The elegant Tower of Belem rises in the Tagus estuary and is a historic defender of these shores.





48-DAY CRUISE PACKAGE | SEYCHELLES TO PORTUGAL GRAND VOYAGE

The Itinerary

The grand, carved cloisters of Jeronimos Monastery spread out close by, and there's another UNESCO-recognised location close by at Sintra, where a colourful town is set amid thick gardens and towering mountains - capped by the royal Pena Palace. Later, relax and take a quick break to drink Ginjinha, a cherry liqueur made from chocolate cups instead of coffee. Lisboa has a sweet tooth, and the famous Pastel de Nata's crumbling pastry and caramelised custard topping is the essential accompaniment to any coffee stop.

Overnight: PortoBay Liberdade or similar, Lisbon, Portugal

Meals included: Breakfast

Day 47 Lisbon, Portugal - Australia or New Zealand

After breakfast this morning, at the appropriate time, join an arranged transfer to Lisbon airport for your homeward international flight.

Meals included: Breakfast

Day 48 Arrive Australia (or New Zealand)

Welcome home!

Meals included: In-Flight



48-DAY CRUISE PACKAGE | SEYCHELLES TO PORTUGAL GRAND VOYAGE

Tour Inclusions

HIGHLIGHTS

Experience an irresistible Indian Ocean odyssey from far flung tropical islands to African adventures

See the powder soft beaches and crystal clear waters in the Seychelles

Witness the amazing coral gardens of Mauritius and blackened volcanic shores of Reunion Island

Enjoy South Africa's blue coastline and iconic Table Mountain with an extended stay in Cape Town

Follow the African coast as Namibian desert dunes cascade into the blue Atlantic, while flamingos flock in nearby lagoons

Experience the vast desert that surrounds Luderitz and search for penguins, dolphins and pink flamingos wading by the coast

Enjoy an overnight stay in Walvis Bay, home to a beautiful lagoon with colonies of resident flamingos

Explore Angola, Africa's second largest oil producing country and deemed the world's most expensive city

Sail under the glittering stars to explore the tropical island allure of Gran Canaria.

Experience Madeira's dramatic cliffs, fertile mountains, and sun-kissed beaches, with an extended stay in Funchal

Visit Portugal's sun-worshipping paradise of Portimão that perfectly encapsulates the Algarve's Atlantic appeal

Dock in Lisbon, Portugal's capital, a glorious mosaic of beauty, freedom and authenticity

FLIGHTS

Return international full-service flights (economy class), surcharges may apply

CRUISE

Enjoy back-to-back cruising the luxurious Silversea's Silver Dawn from the Seychelles to Portugal

17-night cruise from Mahe, Seychelles to Cape Town, South Africa

23-night voyage from Cape Town, South Africa to Lisbon, Portugal

Tipping is included

Unlimited premium spirits, wines & champagne on board at all times

Butler service for every suite

In-suite bar, stocked & replenished daily, including spirits, wines & champagne

Enjoy gourmet dining in-suite & across all specialty restaurants offering open-seating

24 hour dining service

ACCOMMODATION

3 nights of 5-star accommodation in Mahe Island, Seychelles

2 nights of 5-star accommodation in Lisbon, Portugal

DINING

Enjoy 124 meals, including all while cruising

Enjoy gourmet dining in-suite & across all specialty restaurants offering open-seating

24 hour dining service

ESSENTIALS

Port charges and taxes

Airline taxes and surcharges



48-DAY CRUISE PACKAGE | SEYCHELLES TO PORTUGAL GRAND VOYAGE

Tour Inclusions

TRANSPORT

Transportation by private air-conditioned vehicles

TRANSFERS

Day 2: Airport to hotel

Day 5: Hotel to port

Day 45: Port to hotel

Day 47: Hotel to airport

Important Information

**Please note: All information provided in this brochure is subject to both change and availability. Prior to purchase please check the current deal for up-to-date information. If you have already purchased this deal, the terms and conditions on your Purchase Confirmation apply and take precedence over the information in this brochure.*

Booking Information

After purchase, you will receive a receipt and a Purchase Confirmation, directing you to an online Passenger Information Form. You must complete the Passenger Information Form within 72 hours of purchase.

Any special requests, preferences and optional extras MUST be clearly stated in your Passenger Information Form. Any change requested after submitting your Passenger Information Form cannot be guaranteed, is strictly subject to availability and will incur surcharges as outlined in the Schedule of Fees below.

Please note: All countries and territories have different entry requirements in relation to vaccinations, quarantine/isolation periods and travel restrictions. Due to the evolving nature, we would ask all of our customers to monitor, meet and adhere to the specific requirements of their intended destination(s) in the lead-up to and immediately before travel, as well as any requirements post-travel upon their return.

Our Policies

Cancellation and Refund Policy

By placing a booking with us, you acknowledge the following important information:

- **we act as your booking agent;** TripADeal is a booking services provider, and curates the Travel Offers available on our website. We act as your booking agent, and we receive payment for the Booking Services as part of the booking price, however, we do not provide any of the Travel Services (flights, accommodation, tours or other products or services) included in your booking – the Travel Services are provided by a number of third party Travel Suppliers.

- **each booking is unique;** our Travel Offers are made up of a variety of different components and are, during the booking process, uniquely tailored to suit your requirements, for example, departure dates and ports, flight and room upgrades, tour inclusions, etc.

- **changes/modifications to your booking may not be possible;** once your booking has been made, changes or modifications may not be possible, and where possible, may incur a fee. It is important to ensure that the information you provide during the booking process is accurate and up to date, and that you read the Travel Offer carefully before placing your order.

- **Travel Offers are a package;** our Travel Offers have been curated into package offerings and must be used as a package – individual components cannot be used independently of the full package offering.

- **our Travel Offers are generally non-refundable;** in order to provide great value Travel Offers, we work with a variety of Travel Suppliers to find the best deals – this often means the Travel Suppliers' offerings are non-refundable to ensure the best price. We recommend that you obtain travel insurance as soon as you make a booking with us.

To read more about our Cancellation and Refund Policy, please [click here](#).

General Terms and Conditions

By placing your booking with us, you acknowledge and agree to our [Terms & Conditions](#), [Privacy Policy](#) and [Cancellation Policy](#).

Offer Essentials

This Travel Offer is valid for travel on selected dates until the 13th April, 2026. This Travel Offer is priced per person based on a twin share.

Departure Dates & Surcharges

See checkout for live dates and availability.

Single Traveller Supplement

For solo travellers, a mandatory single

supplement applies.

Vista suite: \$25,000

Panorama suite: \$26,000

Classic Veranda suite: \$30,000

Superior Veranda suite: \$31,000

Deluxe veranda suite: \$32,000

- No child discounts are offered. The full price applies to all children travelling with their parents.
- Valid for children 2 years old and over.

Please note: Children must be accompanied by a responsible adult 21 years old and over to travel. No unaccompanied minors are allowed.

Flights

Departure Cities

Sydney, Melbourne, *Brisbane, *Adelaide, Perth, *Auckland

Departure City Surcharges

Brisbane: \$200 per person

Adelaide: \$200 per person

Auckland: \$300 per person

International Flight(s)

Full-Service Airline(s) Used

- Cabin Class: Economy Class

Preferred Airline Surcharge

- Cabin Class: Economy Class
- Qatar Airways: \$200 per person
- Emirates: \$300 per person

Please note:

- *Preferred airlines are subject to availability. If we are unable to fulfil your request, the above extra cost will be refunded.*
- *On any upgrade purchase, short-haul flights and domestic flight sectors are not guaranteed, subject to aircraft configuration.*
- *In the event that a purchased stopover package and a purchased preferred airline upgrade are not compatible, you will have the option to receive a refund for the preferred airline upgrade or be offered an alternative stopover city option, e.g if you choose to fly with Singapore Airlines you cannot stopover in Dubai.*

Important Information

- Preferred airline refers to the marketing carrier and could include codeshare partners.

Arrive Early and Stay Behind Options

Arrive Early

Mahe, Seychelles - From \$300 per person, subject to availability.

Stay Behind

Lisbon - From \$300 per person, subject to availability.

Please note:

- This fee does not include extra nights' accommodation, meals or airport transfers.
- Flight booking changes or cancellations after air tickets have been issued are not guaranteed and may incur additional fees and fare difference, subject to the airline cancellation and change policies.
- Flight changes are subject to availability at the time of booking.
- A high-season Arrive Early or Stay Behind can be purchased for an additional charge, subject to availability. For pricing, please refer to the cart.
- You can arrive early, up to 60 days before your package's start date, and/or stay behind until 60 days after your package's end date. Should you wish to arrive earlier or stay behind for more than 60 days, please contact us to request availability. Additional costs may apply.
- High season surcharges apply to flights departing between the below date ranges:
 - 23rd September 2024 - 20th October 2024
 - 6th December 2024 - 20th December 2024
 - 21st December 2024 - 5th January 2025
 - 6th January 2025 - 31st January 2025
 - 28th March 2025 - 27th April 2025
 - 16th June 2025 - 20th July 2025
 - 15th September 2025 - 12th October 2025
 - 1st December 2025 - 19th December 2025
 - 20th December 2025 - 4th January 2026

- 5th January 2026 - 31st January 2026
- 3rd April 2026 - 20th April 2026
- 26th June 2026 - 17th July 2026
- 18th September 2026 - 9th October 2026
- 12th December 2026 - 18th December 2026
- 19th December 2026 - 3rd January 2027
- 4th January 2027 - 26th January 2027

Stopover Packages

* Doha, Qatar

* Dubai, United Arab Emirates

Includes:

- 2, 3 or 5 nights in 4-star accommodation
- Daily breakfast
- Return airport transfers

For pricing, please refer to the payment cart at checkout.

Please note:

- When a pre and post-tour stopover is chosen, the same stopover location must be chosen each way, due to the airline used.
- When selecting an Arrive Early or Stay Behind in conjunction with a Stopover Package, the stopover will take place after the departure date you select for your Arrive Early or Stay Behind.
- Stopover packages are subject to availability.
- In the event that a purchased stopover package and a purchased preferred airline upgrade are not compatible, you will have the option to receive a refund for the preferred airline upgrade or be offered an alternative stopover city option, e.g if you choose to fly with Singapore Airlines you cannot stopover in Dubai.
- Blackout dates apply to flights departing between the below date ranges

Doha Grand Prix: 26 November - 02 December 2026

Abu Dhabi Grand Prix (for Dubai): 03 December - 09 December 2025

Christmas and New Years Eve - 18

December 2026 to 3 January 2027

Flight Class Upgrades

Business Class: For pricing, please refer to the payment cart at checkout.

Please note:

- Flight upgrades are subject to availability and pricing changes (if we cannot fulfil your request, the upgrade cost will be refunded).
- On any upgrade purchase, short-haul flights and domestic flight sectors are not guaranteed, subject to aircraft configuration.

Outbound Flights

Please note: Due to flight scheduling and availability, some departures may occur on Day 0. Affected customers must be available to depart the day before. Flight times will be indicated on your final documents, issued 4-6 weeks before departure.

Missed Flights

If you fail to arrive for your outbound flight, you risk all flight and land arrangements in your destination being automatically cancelled by the airlines and land operator, respectively. Additional fees may apply to reinstate these services. If you miss your flight for whatever reason, please contact us as soon as possible to make arrangements.

Cruise

Silversea's Silver Dawn

Silversea's Silver Dawn offers an ultra-luxury cruising experience with its intimate atmosphere and exceptional service. With a guest capacity of 596, the ship provides a nearly 1:1 staff-to-guest ratio, ensuring every detail is attended to. Each suite comes with dedicated butler service, ready to assist with anything from unpacking your luggage to pouring champagne and arranging dinner reservations. The ship's culinary program is a highlight, featuring eight diverse dining venues. Atlantide serves as the main dining room, while La Dame offers exquisite French cuisine. For a taste of the sea, Seishin specialises in sushi and Asian-inspired dishes. La Terrazza transitions from a daytime buffet to an authentic Italian restaurant in the evening. Guests can also enjoy al fresco dining at Hot Rocks, an interactive experience where you cook

Important Information

your food on a volcanic stone, or savour casual fare at the pizzeria, Spaccanapoli. Entertainment is thoughtfully curated, with live music at Silver Note, showcasing jazz and blues. The Arts Café serves as a stylish hub for coffee and light bites, and the Panorama Lounge offers drinks with stunning ocean views. The ship also features a casino, a variety of elegant lounges, and engaging performances to keep you entertained. For relaxation and wellness, the Zagara Spa provides a sanctuary with a wide array of treatments. The main pool deck is a great spot to unwind, and the ship also features a gym for those who want to stay active. The Silver Dawn is a testament to Silversea's commitment to creating a luxurious and immersive journey, making every voyage a truly memorable experience.

Onboard currency:

USD\$

Cabins/Staterooms:

Features & Amenities

- * Pillow menu
- * Refrigerator and bar set up stocked with your preferences
- * Plush bathrobe
- * Luxury bath amenities
- * Umbrella
- * Hair dryer
- * Slippers
- * Veranda
- * Sitting area
- * Walk-in wardrobe with personal safe
- * Unlimited standard wi-fi
- * 1 large flat-screen TV with an interactive media library

Vista Suite: 32m²

The Vista Suite provides generous living space for all travellers. The Vista Suite offers all the comfort and attention to detail that you can expect aboard. A generous expanse of interior comforts—elegant decor, a stunning marble bathroom, and an ample seating

area make this a cozy home away from home. The seating area of the Vista Suite has plenty of room to relax while large picture windows frame panoramic ocean views—the perfect backdrop for breakfast in bed!

Panorama Suite: 31m²

The Panorama Suite provides generous living space for all travellers. Large windows flood the room with light, making for luxurious ocean views whether its morning, noon or night. With all the modern conveniences that you would expect from an ultra-luxury cruise. line, the Panorama suites offer comfort, space and style.

Classic Veranda Suite: 36m² including veranda (6m²)

The Classic Veranda Suite provides generous living space for voyagers. Located on the lower decks in the bow, the Classic Veranda Suite offers all the comfort and attention to detail that you can expect aboard—both inside and out. A generous expanse of interior comforts—elegant decor, a stunning marble bathroom, and an ample seating area make this a cozy home away from home. But perhaps this suite's finest asset lies just outside, as floor-to-ceiling glass doors open onto a private veranda, making every sunset feel as if it is yours alone.

Superior Veranda Suite: 36m² including veranda (6m²)

Located on the upper deck and offering spectacular sunset views, the Superior Veranda Suite has all the comforts and luxury that you can expect aboard. A comfortable living space, attention to detail, and a generous expanse of amenities make this stunning suite a cozy home while on the seas. But perhaps this suite's finest asset lies just outside, as floor-to-ceiling glass doors open onto a private veranda, making every sunset feel as if it is yours alone.

Deluxe Veranda Suite: 36m² including veranda (6m²)

The Deluxe Veranda Suite offers a comfortable living space, close to the heart of the ship. With its preferred midship location and all the comfort and attention to detail that you can expect aboard, the Deluxe Veranda Suite is the savvy traveler's paradise - both inside and out. Elegant decor, a stunning marble bathroom, and an ample seating area make this a cozy home away from home. But perhaps this suite's finest asset lies just outside, as floor-to-ceiling glass doors open onto a private veranda, making every sunset feel as if it is yours alone.

Please note:

- All cabins are subject to availability; some cabins may have restricted views.
- Cruise cabins are booked on a guaranteed basis and are assigned by the cruise line prior to departure.

Cruise Arrival and Departure Times:

Please keep in mind that the provided cruise arrival and departure times are an approximate and will be finalised upon receipt of your cruise tickets.

Accommodation

Accommodation Used:

5-star Properties (Self-Rated)

Mahe, Seychelles: Savoy Seychelles Resort and Spa
Lisbon, Portugal: PortoBay Liberdade

Please note: Accommodation/rooms offered are based on a lead-in room type and are subject to availability based on seasonality. In the instance a property is not available, a similar standard of accommodation will be provided. Properties will be confirmed and included in your travel pack, which you will receive 4-6 weeks before travel.

Extra Nights

Not available.

Please note: If you are interested in booking additional nights of accommodation pre or post-tour, please wait until you receive your

Important Information

travel documentation approximately 4-6 weeks before departure for the confirmed list of hotels. If booking your own additional accommodation directly with the hotel, please be aware that you may be required to change rooms at the start/end of your tour.

Maximum Room Capacity

2 people.

Triple Share

Not available.

Bedding Configuration

Twin or double (subject to availability).

Optional Tours/activities

- Some tours or shore excursions require minimum numbers to operate.
- Shore excursions can be booked/reserved directly with the cruise line before travel (subject to availability)
- Shore excursions can also be booked whilst onboard (subject to availability).
- Shore excursion programmes and itineraries may vary depending on local conditions and/or any unforeseen events concerning the timing on the day of the tour. Some excursions are very popular, and therefore availability cannot always be guaranteed, it is advisable to book in advance to avoid disappointment.

Exclusions

- Visa fees and requirements
- Domestic transfers and flights not stated in the deal offer
- Meals/beverages not stated in the deal offer
- Optional gratuities/tipping
- Optional activities/tours
- Personal expenses
- Travel insurance
- Any costs associated with an interruption to your tour as a result of an airline schedule change or cancellation
- Mandatory city tax

Gratuities / Tipping

Please note: Tipping for services provided is always a matter of personal discretion;

however, please be aware that many locals consider tipping part of their normal remuneration, and they may approach you for payment; there's no need to be intimidated by the request.

Cruise

Setting sail on Silversea promises peace of mind from start to finish. That means no worrying about tipping the butlers or staff. Our crew-to-guest ratio of almost 1:1 ensures flawless service from pole to pole, but with us, you never have to think about who should get a tip, how much you should give and when. It's all included! We believe that not having to deal with tipping helps make your luxury cruise even more special and stress-free. And that is worth every cent. gratuities on your cruise, please speak to the guest services staff onboard the ship.

Other Important Information

TOUR GUIDE VS. TOUR LEADER

Tour Guide:

Often locals with intimate knowledge of an area, its culture, and history. Their role entails providing commentary, routing the tour, and seeing that people have a good time. They are a licensed, qualified expert who supplies specific information on the history, art, architecture and culture of the city/village/attraction where they are guiding the tour. The guide meets the group at the required place and leaves it at the end of the tour; they do not travel with the group.

Tour Leader:

An experienced person tasked with ensuring the smooth operation of tours, as well as providing practical support to passengers throughout the whole trip. Their role primarily includes assisting with accommodation, transportation between locations, and communication with tour guides at each stop. A tour leader may provide general guidance around a city or village and offer information on the place visited on the bus. However, they are not required to have specific art, architecture, or historical knowledge. They are not

allowed to provide a guided tour or commentary of a city/village/attraction once there and, if caught doing so, can be fined.

Please note: Tour leaders/guides are not a standard inclusion in all travel offers. Tour leaders/guides will only be made available when required to enhance the experience of the destination featured.

CLIMATE & AVERAGE TEMPERATURES

Seychelles

In April, Seychelles enjoys warm, tropical weather with average temperatures ranging from 25°C to 31°C (77°F to 88°F). It marks a transition period between the wetter northwest monsoon and the drier southeast trade winds, resulting in generally calm seas and light winds. Humidity can still be high, and brief tropical showers may occur, but they are usually short-lived. April is considered one of the best times to visit Seychelles, especially for snorkelling and diving, as the water is clear and visibility is excellent.

Mauritius

In April, Mauritius experiences warm and pleasant weather as it transitions from summer to the cooler, drier season. Average daytime temperatures range between 24°C and 30°C (75°F to 86°F), with humidity starting to decrease. Rainfall becomes less frequent compared to the earlier months, though occasional showers may still occur, especially in the early part of the month. Overall, April is a great time to visit, with plenty of sunshine and comfortable temperatures ideal for beach activities and exploring the island.

South Africa

In April and May, South Africa's coastal cities enjoy mild autumn weather. Durban remains warm and humid, with temperatures between 23°C and 28°C, making it ideal for beach activities. Port Elizabeth experiences pleasant, moderate conditions with daytime temperatures around 20°C to 26°C and less humidity. Cape Town starts to cool, with temperatures ranging from 14°C to 25°C;

Important Information

April is mostly dry and sunny, while May brings increased rainfall as winter approaches. Overall, these months offer comfortable weather and fewer crowds, making it a great time to explore the coast.

Namibia

In May, Namibia enters its dry winter season, bringing cool, clear, and pleasant weather. Daytime temperatures are comfortable, ranging from 20°C to 27°C (68°F to 81°F), while nights and early mornings can be quite chilly, especially in the desert and highland areas, dropping to around 5°C to 10°C (41°F to 50°F). Rain is rare during this time, and skies are typically clear, making it an excellent month for wildlife viewing, photography, and desert exploration. May marks the start of Namibia's peak travel season due to its ideal climate.

Angola

In May, Angola is transitioning from the rainy season to the dry season, especially in the central and southern regions. The weather becomes more stable, with decreasing rainfall and cooler, drier air. Average daytime temperatures range from 22°C to 28°C (72°F to 82°F), while nights are cooler, particularly inland.

In the north (e.g., Luanda), the climate remains warm and relatively humid, but rain becomes less frequent. In the south, especially in higher altitude areas, May marks the beginning of the dry season, offering comfortable temperatures and clearer skies.

The Gambia

In May, The Gambia experiences hot and dry weather as it approaches the start of the rainy season in June. Daytime temperatures range from 30°C to 36°C (86°F to 97°F), with high humidity, especially later in the month. Nights remain warm, averaging around 22°C to 25°C (72°F to 77°F). Rainfall is still minimal in most areas, though isolated showers may begin to appear toward the end of May. Despite the heat, it's still a good time to visit for beach activities and wildlife viewing, with fewer tourists before the

rainy season begins.

Weather

We always suggest referring to an online source for the most up-to-date weather information for your destination/s.

FLIGHTS

Seat Selection & Frequent Flyer Points:

We do not arrange seat selection. It is essential to highlight that some airlines do not allow pre-selected seats. We strongly suggest you contact the airline directly with seating allocation requirements and/or arrive at the airport earlier to arrange your seating. While we do not add frequent flyer member details to bookings, you can do this directly with the airline once you have your flight information.

Passport Validity:

Customers must provide valid passport details either at the time of purchase or no later than 90 days before the departure date. Failure to do so may result in the cancellation of the booking. Customers will be responsible for any costs and fees incurred in this instance.

CRUISE

Embarkation / Disembarkation:

- Begins approximately 2 hours after docking.
- Due to security reasons, all guests must be on board 2 hours before sailing.
- Itineraries are subject to change at any time without notice.
- Check your specific sailing for exact departure and arrival times. All times are local to the port.

Please note: Strict Covid-19 terms may also apply regarding proof of insurance covering Covid-19 and/or vaccination. Please refer to the cruise lines' terms and conditions for further information before boarding.

Cruise Loyalty Discounts:

Please note: Travellers must contact the cruise line directly upon receiving their travel

documents in order to request any membership benefits they may be entitled to.

COACH TOUR

Meals:

For meals not included, the tour leader (when available) will offer assistance with reservations, suggestions and directions to local restaurants. It is your responsibility to notify us of any dietary requests/requirements.

Please note: We will do our best to meet your requests/requirements; however, we cannot guarantee that we will always be able to.

Luggage:

You will be responsible for all your personal belongings whilst on tour. You must carry your own luggage from the vehicle to the hotel room and back to the vehicle. The driver will assist with the uploading and unloading of bags from the vehicle.

OTHER

Mobility:

If you require wheelchair access please contact our friendly sales and service team to inquire on your behalf.

Fitness Level Required:

Adventure (and spontaneity) create some of the best travel memories. Bear in mind, your home schedules and timings might not be adhered to on tour - it's all part of the fun!

A relaxed level of fitness will be required. Expect a comfortable pace of touring with a focus on leisure time and gentle activity. This may include city tours, the ability to walk up and down small flights of stairs and gentle slopes. You will be responsible for your own luggage and have the ability to board all modes of transport without assistance. Please note: Some areas may be inaccessible to wheelchairs or mobility scooters, with personal walking sticks and other aids required should they be needed. Although some assistance may be available, every traveller should be self-reliant during all aspects of their travel.

Important Information

Please note: It is expected that every traveller must be self-reliant and able to undertake all aspects of their own travel. Please speak to your booking agent about your personal circumstances and any assistance requirements to ensure this tour is right for you.

Please note: If you have any concerns, please consult your healthcare provider prior to purchase/travel.

Yellow Fever:

A valid international certificate of vaccination against Yellow Fever is required in many countries. You may need to present this on arrival at the airport or border crossing. Some countries will refuse entry if you are unable to present your certificate. It's also common for your home country to request a Yellow Fever certificate upon arrival.

You must check with your doctor well before leaving home about the Yellow Fever requirements for the countries you'll be visiting.

Sightseeing:

Please note: If entry to a site is affected by changes in operating hours or public holiday closures, your itinerary, where possible, may be adjusted, or a similar activity will be offered in its place (subject to availability).

Shopping:

Shopping overseas can be a daunting and confusing experience, especially when there is a language barrier. Please be very cautious when foreign currencies and prices are involved. If paying by credit card, please pay close attention to the amount you are being charged and keep all your receipts.

Do not make any purchases you are not comfortable with or feel pressured into. If you are uncertain or need assistance with the language barrier, please seek assistance from your Tour Guide/Leader. Please refer to our [Terms and Conditions](#) regarding shopping for further information.

Visas

Seychelles:

Australian passport holders must apply for an ETA (electronic travel authorisation) online before travelling. The traveller must hold a machine readable passport that has at least six months validity from date of entry and at least two blank pages. Apply online seychelles.govtas.com

Mauritius:

Australian passport holders are visa exempt for a stay of up to 180 days. The traveller must hold a machine readable passport valid at least 30 days beyond the period of intended stay with at least one blank visa page. Hold proof of sufficient funds. Hold proof of onward/return airline tickets. Hold all documents required for the next destination. Hold a visa for the next destination, if required.

Reunion:

Australian passport holders are visa exempt for a stay of up to 90 days. The traveller must hold a machine readable passport valid for at least six months beyond your intended stay. Hold proof of sufficient funds. Hold proof of onward/return airline tickets. Hold all documents required for the next destination. Hold a visa for the next destination, if required.

South Africa:

Australian passport holders are visa exempt for a stay of up to 90 days. The traveller must hold a machine readable passport valid at least 30 days beyond the period of intended stay with two blank visa pages. Hold proof of sufficient funds. Hold proof of onward/return airline tickets. Hold proof of purpose of trip. Hold all documents required for the next destination. Hold a visa for the next destination, if required.

Namibia:

From 01 April 2025 Australian passport holders require a visa to enter Namibia. The traveller must hold a machine readable passport valid at least six months beyond the period of intended stay with two blank visa pages. Hold proof of sufficient funds

.Hold proof of onward/return airline tickets, proof of medical insurance. If traveling by cruise ship you must apply for a visa in advance to leave the port. Submit your online application through the Namibian Ministry of Home affairs before your trip to avoid delays. Visit eservices.mhaiss.gov.na to apply.

Angola:

Australian passport holders may require a visa but may be exempt for a short-term stay. Entry requirements can change so its essential to confirm the latest information with official sources before travelling. If required for tourism an e-visa is the fastest way to apply or you can contact the Angolan embassy or Smart traveller for updated advice smarttraveller.gov.au. Must hold a passport valid at least six months on entry with one blank visa page. Hold proof of sufficient funds. Hold proof of onward/return airline tickets. Hold documents showing proof of purpose of trip. Hold all documents required for the next destination.

Spain

Australian passport holders are visa exempt for an accumulative total stay of 90 days per 180 calendar days. The traveller must hold a machine readable passport valid at least 30 days beyond the period of intended stay with at least one blank visa page. Hold proof of sufficient funds. Hold proof of onward/return airline tickets.

European Entry/Exit System (EES)

From October 12, 2025, a new European Entry System (EES) replaces the current manual passport-stamping process for non-EU travellers. Upon arrival in the Schengen area, Australian and New Zealand passport holders will have their fingerprints recorded and a photograph taken. Their entry and exit dates will be electronically registered. No previous action is required, but please be aware of longer wait times at border entry. From 10 April 2026, the EES will be fully operational at all external border crossing points of all the European countries

Important Information

(Schengen area) using the system.

European Travel Information & Authorisation System (ETIAS)

As an extension of the EES implementation introduced from 2025, ETIAS travel authorisation is a mandatory entry requirement for visa-exempt nationals travelling to [any of these 30 European countries](#), including Australian and New Zealand citizens, that will be introduced in 2026. We advise you to monitor smartraveller.com.au closer to your departure to ensure you are up to date on the requirements at the time of entry.

Important:

- *Please start arranging your visa three weeks before departure to account for any delays due to consulate operating hours.*
- *Visa rules are subject to change. Please check with the nearest embassy, consulate or immigration department of the destination/s you are visiting once you receive your travel documentation to ensure you have the most up to date information.*
- *It is your responsibility to be travel-ready and ensure that you are aware and comply with any destination or travel requirements, including the validity of all required travel documents.*
- *Passengers who are not Australian citizens must also check with the respective consulate or visa agency to determine what their visa requirements are and what personal identification is required.*
- *It is also important to note that some areas of employment, such as journalism, government authorities and charity organisations, may have additional restrictions in applying for visas. This may, in turn, affect the type of application required.*

Travel Insurance

Embarking on your next trip is exciting, and while you hope the unexpected does not happen, it is best to be prepared. We strongly recommend you take out travel insurance when making your booking. Whether it's a potential medical

emergency, a flight cancellation, a delayed suitcase, or an unforeseen event, it's important to ensure you're adequately protected. For more information or advice visit <https://www.tripadeal.com.au/travel-insurance>

Schedule Of Fees

Voluntary Changes

This includes booking changes requested by you, including but not limited to those changes requiring an airline ticket or a Purchase Confirmation reissue.

- Changes - \$100 per booking and any additional charges applied by the airline/ cruise company/accommodation/other travel providers.

Name Changes Due To Passenger Error

- If the incorrect name has been provided, charges of \$100 per booking and any additional charges applied by the airline/ cruise company/accommodation/other travel providers.

Supplier Fees

In the event the tour package you have purchased is unable to proceed, and/or a Travel Supplier is unable to fulfil the tour due to external circumstances (Limitation of Liability e.g. a Force Majeure event), there may be a fee or amount of money that is withheld by our Suppliers and is unrecoverable. This may be due to non-refundable airline tickets, cancellation penalties with cruise cabins or unrecoverable payments with our land/accommodation partners. If refunds are not available from Suppliers, we will endeavour to obtain a travel credit on the best terms available and communicate these outcomes to you. In the event we are unable to obtain a refund or travel service credit, or part thereof, this cost is passed on to the customer as a Supplier Fee.