



Patagonia & Antarctica Expedition

BUENOS AIRES ● EL CALAFATE ● ANTARCTICA

The Offer

Embark on an extraordinary journey across two remarkable worlds, from the windswept landscapes of Patagonia to the icy shores of Antarctica. This truly is the ultimate adventure for the intrepid traveller.

Begin in the vibrant city of Buenos Aires, ready to wander the colourful streets of the La Boca neighbourhood and see the iconic La Casa Rosada Presidential Palace. As evening falls, savour an elegant 3-course dinner paired with a captivating tango performance.

Catch a flight to El Calafate, the gateway to the wilderness of Los Glaciares National Park. Stand in awe of Perito Moreno Glacier, keeping an eye out for massive ice formations calving dramatically into the waters of Lago Argentino with a thunderous crash. The next day, take a unique 4x4 Nativo experience. Learn about the rich heritage of the native Tehuelche people before dining inside a cave at sunset, framed by the sweeping Patagonian landscape.

After flying to Ushuaia, you'll board HX Expedition's MS Fridjof Nansen. Indulge with all-inclusive meals, comfortable cabins and elegant lounges as you cross the Drake Passage.

Spend five unforgettable days exploring Antarctica's otherworldly landscapes, observing wildlife and taking Zodiac landings. Enrich your experience with optional activities such as camping, kayaking and more (additional charges). Disembark in Ushuaia before flying to Buenos Aires and heading home.

This expedition includes all flights, a 10-night all-inclusive cruise, 8 nights of accommodation, 42 meals and a wealth of unforgettable experiences.

Want more? Choose Itinerary 2 to extend the adventure and explore Lima, Cusco and Machu Picchu.

Offer available for a limited time or until sold out. TRIP A DEAL PTY LTD: 50149240433

Updated: 20 May 2026 08:35:37

Have a question about this deal? We're here to help.
Call our friendly team on 1300 158 912

1

FREQUENT
FLYER



Trip
aDeal



22-DAY CRUISE & TOUR PACKAGE | PATAGONIA & ANTARCTICA EXPEDITION

The Itinerary

Itinerary 1

Day 1 Australia (or New Zealand) - Buenos Aires, Argentina

Today, you'll depart from Australia (or New Zealand) for Buenos Aires, Argentina. Upon arrival, you will be met by a tour representative and transferred to the hotel.

Please note:

- Due to flight scheduling and availability, some departures may occur on Day 0. Affected customers must be at the airport the day before. Flight times will be indicated on your final documentation which you will receive prior to departure.
- Some customers may experience an extended layover in Santiago, Chile. Lounge passes may be purchased at your own expense.

Overnight: NH Buenos Aires Tango or similar

Meals included: Breakfast; In-Flight

Day 2 Buenos Aires City Tour & Tango Show

After breakfast, join a city tour of Buenos Aires to discover the charm of this vibrant metropolis.

Begin at Plaza de Mayo where you'll learn about the area's significance before heading to San Telmo. This is one of the city's oldest neighbourhoods, known for its cobblestone streets and antique shops. Explore the colourful neighbourhood of La Boca and visit other important landmarks such as La Casa Rosada (the Presidential Palace), the Cabildo (the colonial town hall) and the Neoclassical Metropolitan Cathedral. Finally, admire the celebrated Recoleta Cemetery, a labyrinth of ornate mausoleums.

Afterwards, return to your hotel and enjoy the afternoon at leisure.

In the evening, you'll be transferred to Cafe de los Angelitos for a 3-course dinner and unforgettable tango show. As a leading venue for tango, it preserves the luxury and distinction of a bygone era. Enjoy performances by tango orchestras, folk music, dancers and singers.

Overnight: NH Buenos Aires Tango or similar

Meals included: Breakfast; Dinner

Day 3 Buenos Aires Free Day

Enjoy a day at leisure in beautiful Buenos Aires to relax at the hotel or wander through the artistic district of Palermo. Alternatively, you can choose to partake in an optional activity:

Optional Activity: The Argentine Experience

Experience Argentina's culinary culture in a unique, interactive dinner unlike any typical dining or cooking class. Over a seven-course, 17-dish tasting menu, you'll explore traditional flavors, regional ingredients and Argentine storytelling. You'll also engage by folding your own empanadas, preparing chimichurri and making yerba mate. Connect with fellow travellers as expert chefs guide you through the rich traditions of Argentine cuisine, paired with five exceptional wines. Please see current pricing in Important Information.

- **Welcome:** Patagonian trout tartar & Pét-Nat sparkling wine
- **Hands-On:** Empanada folding and chimichurri preparation
- **Memory on a Plate:** Savory chard fritters and farinata chickpea flatbread
- **Picada:** Chorizo, black sausage and grilled skirt steak





22-DAY CRUISE & TOUR PACKAGE | PATAGONIA & ANTARCTICA EXPEDITION

The Itinerary

Itinerary 1

- **Beef Tasting:** Tenderloin with mushroom butter, slow-braised Thor's Hammer and grilled seasonal vegetables
- **Dessert Tasting:** Dulce de leche pancakes, chocotorta and dulce de leche flan
- **Mate Class:** Learn to prepare yerba mate, paired with alfajores filled with dulce de leche

Overnight: NH Buenos Aires Tango or similar

Meals included: Breakfast

Day 4 Buenos Aires - El Calafate

Today, at the appropriate time, you'll be transferred to the airport for your flight to El Calafate. Upon arrival, you'll be met by a tour representative and transferred to the hotel.

El Calafate, known as the gateway to Los Glaciares National Park, is a charming Patagonian town surrounded by vast lakes, rugged mountains and shimmering ice fields.

Overnight: Calafate Parque or similar

Meals included: Breakfast

Day 5 Perito Moreno Glacier, Los Glaciares National Park

Today, you'll head to Perito Moreno Glacier in the Los Glaciares National Park. On the way, you'll be treated to the history of Argentino Lake and Rounded Bay. This area is populated by a large variety of birds including black-necked swans, flamingos, steamer ducks and more.

Perito Moreno Glacier is one of Argentina's most famous and awe-inspiring natural wonders. Standing before its 70-metre-high face and watching 100-tonne blocks of ice crash into the waters

below is truly humbling. The Perito Moreno Glacier is over 30 kilometres in length and 5 kilometres wide at the face. Scattered with boardwalks and viewing platforms, you'll get close enough to the action to hear ruptures of ice collapsing into the water.

Total Duration: 8 hours

Walking Difficulty: Easy, stairs involved but gentle slopes.

Walking Distance: The catwalks are divided into 3 circuits. Guests can stop, rest and agree on a meeting point. A tour does not necessarily mean walking the entire balcony's path.

- **Central Balconies:** 600 metres (including 1st balcony, 2nd balcony and Northern balcony)
- **Lower Balcony:** 1,100 metres (including Lower balcony)
- **Coast's Balcony:** 1.117 metres (from the parking area up to the Northern balcony)

Please note:

- The route will be determined by weather conditions and physical condition as the available time to walk through is 1 to 3 hours.
- The excursion is usually organised as a full-day program.
- The visit provides enough time for lunch (boxed lunch provided). Box lunch menu choices will be asked to be picked at least 3 days in advance.
- It's recommended to pack warm clothes, a raincoat, jacket, waterproof trousers, hiking boots, sunglasses, sunscreen, gloves, hat and backpack.

Optional Activity: Perito Moreno Glacier Safari Boat



22-DAY CRUISE & TOUR PACKAGE | PATAGONIA & ANTARCTICA EXPEDITION

The Itinerary

Itinerary 1

This 1-hour voyage visits the Rico branch of Argentino Lake to appreciate the majestic south wall of the Perito Moreno Glacier. This glacier ice wall is about 60 metres high and 100 metres below the lake level. The boat comes about 200 metres from where the glacier touches the Magallanes Peninsula and then goes for about 3 kilometres south. This tour is carried out on the boat Yagan, which has a capacity of 110 passengers. Boarding takes place at the port on the Bay "Under the Shadow", about 7 kilometres before the glacier viewpoint. Please see current pricing in Important Information.

Overnight: Calafate Parque or similar

Meals included: Breakfast; Lunch

Day 6 El Calafate Free Day & Nativo Sunset Experience

Enjoy a full day at leisure to explore El Calafate, or choose to join one of the optional excursions available.

In the early evening (approximately 18:00), you'll be collected for an unforgettable Nativo experience in 4x4 vehicles. Journey along the shores of Argentino Lake which is surrounded by snow-capped mountains and fed by immense glaciers. Travel across dramatic cliffs overlooking the lake, learn about the encounters between early explorers and the native Tehuelche people, and take in sweeping views of the Patagonian landscape. Afterwards, enjoy a traditional dinner that's served inside a cave. The menu may include:

- *Homemade soup*
- *Lamb stew with vegetables on country bread (vegetarian option available)*
- *Chocolate mousse*

• *Wine, water or juice*

Optional Activity: Ranch Day at Nibepo Aike

Approximate tour timing: 08:30 – 16:00

Located in the heart of Los Glaciares National Park, Nibepo Aike Ranch perfectly blends history with nature. This experience offers an authentic introduction to life on a traditional Patagonian ranch, reflecting the heritage and rhythms of rural Patagonia. After about an hour's drive from the hotel, you'll be welcomed by the host with tea, coffee and traditional fried pastries. Take a gentle walk along the shores of Argentino Lake's Rico Canal where glacial erosion has sculpted dramatic rock formations and uniquely shaped beaches. The path leads through lenga and ñire forests which are home to native wildlife including vultures and eagles. See a Gaucho skills demonstration (weather permitting) including reins testing, dressage and a hand-operated shearing demonstration, complete with insights into wool sorting and preparation. Visit the old main house to hear stories of the ranch's first inhabitants and stroll through the organic garden before a traditional meal at El Quincho restaurant. Please see current pricing in Important Information.

Optional Activity: All Glaciers Navigation

Approximate tour timing: 07:00 - 16:00

Walking difficulty: Low

Recommended packing: Warm clothing, a rain jacket, waterproof trousers, hiking boots, sunglasses, sunscreen, gloves, hat and backpack



22-DAY CRUISE & TOUR PACKAGE | PATAGONIA & ANTARCTICA EXPEDITION

The Itinerary

Itinerary 1

This full-day tour offers a unique opportunity to experience Patagonia's most impressive glaciers, including Upsala and Spegazzini. From your hotel, transfer to Puerto Bandera Port and board a boat for the North Arm of Lake Argentino. Navigate past Boca del Diablo to the Upsala Canal, sailing among icebergs calved from the Upsala Glacier. Continue through the Spegazzini Channel to view the Dry Glacier before approaching the fronts of Spegazzini, Heim Sur and Peineta Glaciers. Disembark at Spegazzini Base for a short walk along the forest trail to the Spegazzini Refuge, stopping at viewpoints over the Bay of Glaciers. Lunch can be enjoyed at the refuge (not included), or you can simply take in the spectacular views. A 300-metre mountain path leads through wooded trails with stations covering glaciology, history and local fauna. This path is of medium difficulty with no technical challenges and offers multiple viewpoints along the way. The itinerary may change depending on weather and sailing conditions. Please see current pricing in Important Information.

Overnight: Calafate Parque or similar

Meals included: Breakfast; Dinner

Day 7 El Calafate Free Day

Today you'll have the day at leisure to independently explore El Calafate or alternatively you can choose to participate in an optional activity:

Optional Activity: Ranch Day at Nibepo Aike

Approximate tour timing: 08:30 - 16:00

Located in the heart of Los Glaciares National Park, Nibepo Aike Ranch perfectly blends history with nature. This experience offers an authentic introduction to life on a traditional Patagonian ranch, reflecting the heritage and rhythms of rural Patagonia. After about an hour's drive from the hotel, you'll be welcomed by the host with tea, coffee and traditional fried pastries. Take a gentle walk along the shores of Argentino Lake's Rico Canal where glacial erosion has sculpted dramatic rock formations and uniquely shaped beaches. The path leads through lenga and ñire forests which are home to native wildlife including vultures and eagles. See a Gaucho skills demonstration (weather permitting) including reins testing, dressage and a hand-operated shearing demonstration, complete with insights into wool sorting and preparation. Visit the old main house to hear stories of the ranch's first inhabitants and stroll through the organic garden before a traditional meal at El Quincho restaurant. Please see current pricing in Important Information.

Optional Activity: All Glaciers Navigation

Approximate tour timing: 07:00 - 16:00

Walking difficulty: Low

Recommended packing: Warm clothing, a rain jacket, waterproof trousers, hiking boots, sunglasses, sunscreen, gloves, hat and backpack

This full-day tour offers a unique opportunity to experience Patagonia's most impressive glaciers, including Upsala and Spegazzini. From your hotel, transfer to Puerto Bandera Port and board a boat for the North Arm of Lake Argentino. Navigate past Boca del Diablo to the Upsala Canal, sailing among icebergs



22-DAY CRUISE & TOUR PACKAGE | PATAGONIA & ANTARCTICA EXPEDITION

The Itinerary

Itinerary 1

calved from the Upsala Glacier. Continue through the Spegazzini Channel to view the Dry Glacier before approaching the fronts of Spegazzini, Heim Sur and Peineta Glaciers. Disembark at Spegazzini Base for a short walk along the forest trail to the Spegazzini Refuge, stopping at viewpoints over the Bay of Glaciers. Lunch can be enjoyed at the refuge (not included), or you can simply take in the spectacular views. A 300-metre mountain path leads through wooded trails with stations covering glaciology, history and local fauna. This path is of medium difficulty with no technical challenges and offers multiple viewpoints along the way. The itinerary may change depending on weather and sailing conditions. Please see current pricing in Important Information.

Optional Activity: El Chalten Full-Day Tour

Approximate tour timing: 07:30 - 20:30

Tour duration: 13 hours (the distance from El Calafate to El Chalten is 3 hours each way).

Walking distance: A guided hike to the Mirador de los Cóndores is approximately 1.5 - 2 hours, and Chorrillo del Salto is approximately 1.5 - 2 hours

Walking difficulty: These are considered easy walks

Recommended packing: Warm clothes, a raincoat, jacket, waterproof trousers, hiking boots, sunglasses, sunscreen, gloves, hat and backpack

Embark on an early adventure, heading towards the legendary Route 40 which skirts Argentino Lake before crossing the Santa Cruz and La Leona Rivers. Continue along Lake Viedma with the

Andes in the background before reaching El Chalten. After travelling 3 hours and 220 kilometres, you'll arrive at the mountain village of El Chalten. Enjoy a guided hike to the Mirador de los Cóndores, a scenic viewpoint that offers a perfect introduction to the area's majestic surroundings. Break to enjoy a tasty packed lunch, essential fuel for the second half of the day. In the afternoon, the trail leads to Chorrillo del Salto, a hidden waterfall framed by forests and mountains. Please see current pricing in Important Information.

Overnight: Calafate Parque or similar

Meals included: Breakfast

Day 8 El Calafate - Ushuaia

Today, at the appropriate time, you'll be transferred to the airport for your flight to Ushuaia. Upon arrival, you'll be transferred to the hotel where you can enjoy the remainder of the day at leisure to explore the southernmost city in the world.

Overnight: Los Acebos Hotel or similar

Meals included: Breakfast

Day 9 Ushuaia - Board HX Expeditions Ship

This morning, you'll be transferred from the hotel to the cruise port. Here, a hybrid-powered, state-of-the-art HX Expeditions ship awaits. Once onboard, you'll attend a mandatory health and safety briefing before enjoying a welcome dinner hosted by the Expedition Team. Afterwards, take some time to explore the ship which will be your home for the next 11 days.



22-DAY CRUISE & TOUR PACKAGE | PATAGONIA & ANTARCTICA EXPEDITION

The Itinerary

Itinerary 1

Overnight: MS Fridtjof Nansen
Meals included: Breakfast; Dinner

Day 10 Drake Passage

Today, the ship will cross the infamous Drake Passage, named after English sea captain Sir Francis Drake who stumbled upon it in 1578. With no landmass at this latitude, the waters can be turbulent. However, don't worry as HX's ultra-modern expedition ships easily handle the "Drake Shake."

The two-day journey across the 1000 kilometre-wide passage gives you time to prepare for your Antarctic adventure.

The Expedition Team will begin their lecture series in the onboard Science Centre, sharing their extensive experience and teaching you how to make your visit safe and sustainable. You'll also learn how to comply with IAATO guidelines, including wearing sterilised rubber boots when ashore and vacuuming your clothing to remove foreign contaminants. During this time, you can participate in exciting "Citizen Science" projects like whale counting, cloud observation and sample collection.

Take advantage of the other amenities by working out in the gym, relaxing in the Wellness Area or enjoying meals at any of the three exquisite restaurants. Don't forget to head out on deck to look for the first icebergs and spot wildlife like whales, dolphins and seabirds.

Overnight: MS Fridtjof Nansen
Meals included: Breakfast; Lunch; Dinner

Day 11 Drake Passage

Today, you'll continue your journey across the legendary Drake Passage. Take this opportunity to unwind and immerse yourself in the onboard experiences. With each passing hour, the excitement builds as you draw closer to the icy wonderland of Antarctica, which you'll arrive at the following day.

Overnight: MS Fridtjof Nansen
Meals included: Breakfast; Lunch; Dinner

Day 12 Antarctica

Land ho! Welcome to the icy wonderland of Antarctica. For the next five days, you'll be surrounded by vast icy waters, towering glaciers and colossal icebergs that seem to stretch into infinity. The sheer scale and beauty of the landscapes are almost otherworldly. The silence of this frozen world is often interrupted by the excited shouts of fellow passengers as penguins, seals and whales make their appearances.

Antarctica's landscape and wildlife are constantly evolving with the seasons. During the late spring months of October and November, the snow-covered terrain appears even more pristine, providing the perfect backdrop for penguins as they court and build their nests. By December and January, the arrival of more whales marks the height of summer, coinciding with the hatching of penguin chicks. February and March offer the ultimate whale-watching experience when large pods are drawn to the rich feeding grounds of krill in Antarctic waters.



22-DAY CRUISE & TOUR PACKAGE | PATAGONIA & ANTARCTICA EXPEDITION

The Itinerary

Itinerary 1

Once you arrive, the Expedition Team will take every opportunity to explore the environment with you. Whether you're cruising through the ice or taking Zodiac landings, you'll get up close and personal with this frozen paradise. Spotting penguins from the ship is exhilarating, but the experience becomes even more awe-inspiring when you're on land, surrounded by these charming creatures. As you cruise in smaller explorer boats or take part in optional kayaking excursions, you may even encounter seals or whales right next to you. Be sure to keep your camera ready at all times to capture these unforgettable moments.

To enrich your journey, the Expedition Team will share their expertise on a variety of fascinating topics, including the history of Antarctica and the intriguing science of glaciology. Every day will bring new discoveries and unforgettable experiences as you explore this awe-inspiring continent.

Overnight: MS Fridtjof Nansen

Meals included: Breakfast; Lunch; Dinner

Day 13 Antarctica

Be sure to speak with your Expedition Team onboard to book optional excursions for your time in Antarctica.

Optional Activity: Antarctica Camping

Duration: 10 hours

In the true style of the early explorers, venture out at night for a once-in-a-lifetime experience as you go camping in the Antarctic night. This activity features top-of-the-line camping equipment that meets Antarctic standards for camping on snow and ice. Imagine yourself sleeping under the Antarctic sky with little more

than the thin wall of a tent separating you from the elements. The adventure starts with a pre-camp briefing by the expedition staff who accompany you on the activity. They set up your camp after dinner, with guests participating from beginning to end. If you have never pitched a tent before, this is your chance. After the camp is set up, you can either go to bed or sit outside and marvel at the stillness. Depending on the landing site, you may take short walks to nearby viewpoints and visit penguin colonies on the bright Antarctic night. If you like, wake up early, climb out of your tent and watch the sunrise. In the morning hours, take down the camp, and the boats pick you up for the return trip to the ship. Back on board, enjoy a special breakfast and debrief the experience.

Please note:

- *This activity may have limited availability. If space becomes limited, participants will be chosen via a lottery-based lucky draw.*
- *As an IAATO member, HX adheres to all guidelines associated with onshore overnight stays in Antarctica. They leave nothing behind and remove all traces of their presence to protect wildlife and the fragile environment.*

Optional Activity: Antarctica Snowshoeing

Duration: 2 hours

Feel the spirit of the early Antarctic explorers. Join them for a walk on the wild side with snowshoes. Climb hills, cross glittering white plains and step on untouched landscape. The experienced Expedition Team will guide you to places with awe-inspiring views. You might even observe penguin colonies or even see whales swimming in the sea from above.



22-DAY CRUISE & TOUR PACKAGE | PATAGONIA & ANTARCTICA EXPEDITION

The Itinerary

Itinerary 1

Optional Activity: Antarctica Kayaking

Duration: 3 hours

Merge with nature on an exceptional Antarctic sea kayaking adventure, getting up close to awe-inspiring icebergs and glaciers. Paddling through crystal-clear water you might spot seals, penguins and even whales. The experienced Expedition Team will take you to stunning Antarctic areas with high chances of encountering wildlife.

Overnight: MS Fridtjof Nansen

Meals included: Breakfast; Lunch; Dinner

Day 14 Antarctica

Overnight: MS Fridtjof Nansen

Meals included: Breakfast; Lunch; Dinner

Day 15 Antarctica

Overnight: MS Fridtjof Nansen

Meals included: Breakfast; Lunch; Dinner

Day 16 Antarctica

Overnight: MS Fridtjof Nansen

Meals included: Breakfast; Lunch; Dinner

Day 17 Drake Passage

After having delved into the remote and wild continent of Antarctica, it will be time to set sail homeward bound. Crossing back over the Drake Passage, the Expedition Team will recount the journey's many experiences at the Science Centre.

Overnight: MS Fridtjof Nansen

Meals included: Breakfast; Lunch; Dinner

Day 18 Drake Passage

Overnight: MS Fridtjof Nansen

Meals included: Breakfast; Lunch; Dinner

Day 19 Disembark Cruise - Ushuaia - Buenos Aires

Today marks the final day of your unforgettable Antarctic adventure as the ship returns to Ushuaia. Having ventured to the bottom of the world, you've explored the remote and extraordinary Seventh Continent.

Upon arrival in Ushuaia, you'll disembark and transfer to the airport for your flight back to Buenos Aires. Once arrived, be transferred to the hotel where you can enjoy the remainder of the day at leisure.

Overnight: NH Buenos Aires Tango or similar

Meals included: Breakfast



22-DAY CRUISE & TOUR PACKAGE | PATAGONIA & ANTARCTICA EXPEDITION

The Itinerary

Itinerary 1

Day 20 Buenos Aires, Argentina - Australia (or New Zealand)

Today, at the appropriate time, you'll be transferred to the airport in preparation for your return flight to Australia (or New Zealand).

Meals included: Breakfast

Day 21 In Transit

Sit back, relax and reminisce on the memories created on your trip through South America and Antarctica.

Meals included: None

Day 22 Arrive Australia (or New Zealand)

Once arrived in Australia (or New Zealand), make your own onward travel arrangements.

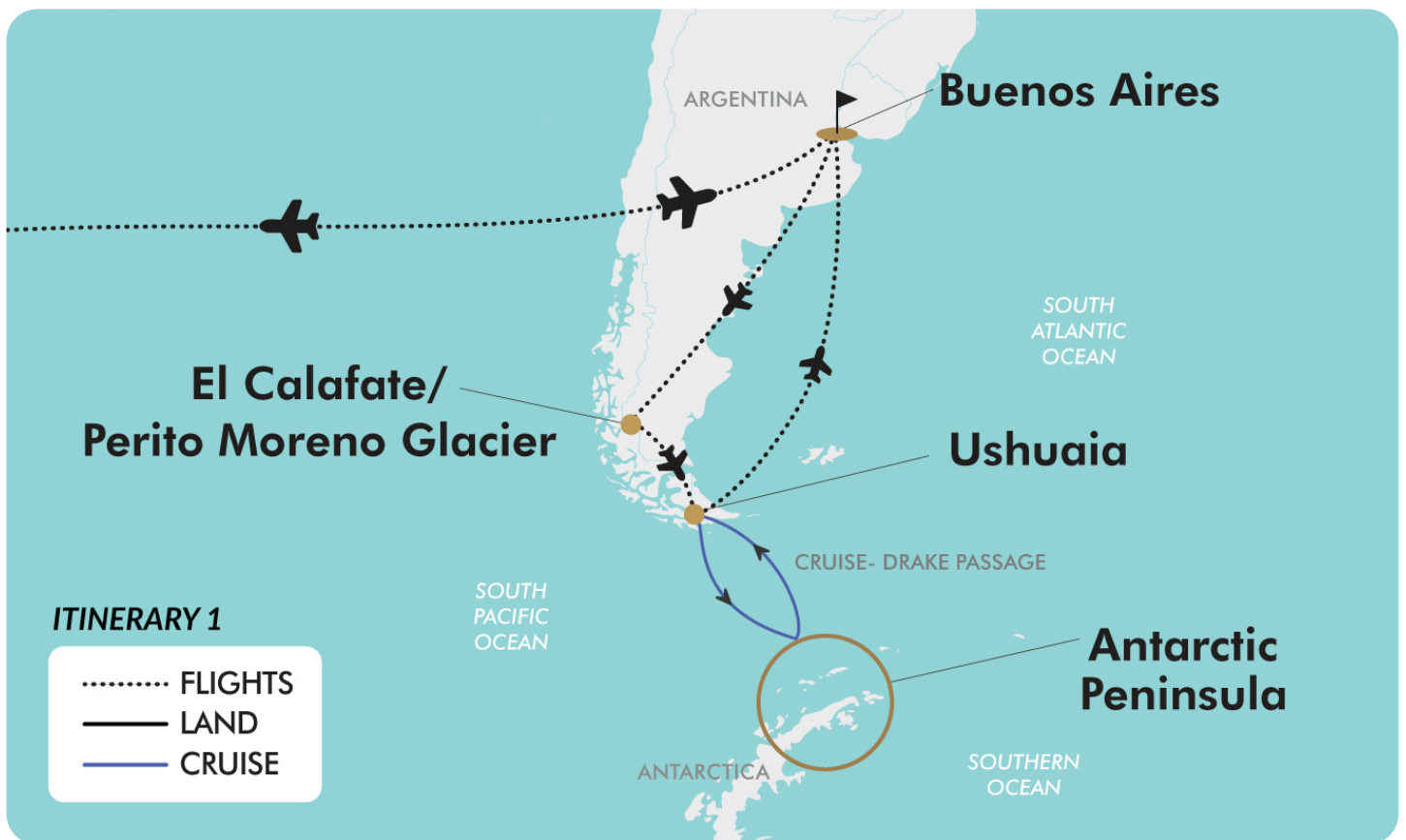
Meals included: None



22-DAY CRUISE & TOUR PACKAGE | PATAGONIA & ANTARCTICA EXPEDITION

The Map

Itinerary 1



Offer available for a limited time or until sold out. TRIP A DEAL PTY LTD: 50149240433

Updated: 20 May 2026 08:35:37

Have a question about this deal? We're here to help.
Call our friendly team on 1300 158 912



22-DAY CRUISE & TOUR PACKAGE | PATAGONIA & ANTARCTICA EXPEDITION

The Itinerary

Itinerary 2

Day 1 Australia (or New Zealand) - Lima, Peru

Today, you'll depart from Australia (or New Zealand) to Lima, Peru. Upon arrival in Lima, be welcomed and transferred to the hotel.

Please note:

- Due to flight scheduling and availability, some departures may occur on day 0. Affected customers must be at the airport the day before. Flight times will be indicated on your final documentation which you will receive prior to departure.
- For those departing from Perth, you may depart on day -1 (two days earlier). Flight times will be indicated on your final documentation, which you will receive prior to departure.
- Some customers may experience an extended layover. Lounge passes may be purchased at your own expense.

Overnight: Jose Antonio Lima Hotel or similar

Meals included: In-Flight

Day 2 Lima City Tour

This morning, after breakfast, you'll set off on a city tour of Lima.

Start with a brief stop at the Huaca Pucllana Archaeological Site, an ancient pre-Inca ceremonial centre, before continuing to Lima's UNESCO World Heritage-listed historic centre. Here, you'll explore the Plaza de Armas, the heart of the city which is surrounded by grand colonial and Republican-era buildings. Iconic landmarks border the square including the Government Palace, Lima Cathedral, Archbishop's Palace, Municipal Palace and the Palace of the Union.

From the square, walk to the Convent of San Francisco, one of Peru's most important religious sites. Founded in the 1530s and completed in 1766, this remarkable complex has withstood centuries of earthquakes. Inside, its historic library preserves over 25,000 rare volumes in Spanish, English and Quechua. The convent is built around a tranquil courtyard planted with mango and lucuma trees, while its walls feature striking murals of St Francis of Assisi. Among the highlights are a golden Baroque altarpiece and Diego de la Puente's famous 1696 painting of The Last Supper.

Descend into the eerie San Francisco Catacombs, Lima's largest. Once a burial site for more than 25,000 people, the catacombs were in use until 1808 and rediscovered in 1947. Today, they fascinate visitors with their intriguing arrangements of bones in geometric patterns.

Afterwards, return to the hotel where you can enjoy the remainder of the day at leisure.

Overnight: Jose Antonio Lima Hotel or similar

Meals included: Breakfast



22-DAY CRUISE & TOUR PACKAGE | PATAGONIA & ANTARCTICA EXPEDITION

The Itinerary

Itinerary 2

Day 3 Lima - Cusco

Today, at the appropriate time, you will be transferred to the airport in preparation for your flight to Cusco. Upon arrival, you'll be met and transferred to the hotel where the rest of the day is yours to enjoy at leisure. Take the chance to wander through the city's vibrant centre where Inca foundations blend seamlessly with colonial architecture and European influences. From lively plazas to cobblestone streets, Cusco offers a unique atmosphere that reflects the meeting of indigenous and Spanish cultures.

Overnight: Costa del Sol Wyndham Cusco or similar

Meals included: Breakfast

Day 4 Cusco City Tour

Today, you will embark on a half-day tour of Cusco.

Visit the wonderful Koricancha, located next to the Church of Santo Domingo. According to chroniclers, the Koricancha was the most sacred and important temple of the Inca Empire during the period immediately after the Spanish conquest. Continue to the Cathedral of Cusco in the Plaza de Armas (Main Square), built between 1560 and 1654 on the foundations of an existing Inca temple. This spectacular cathedral houses many works of art from the Cusco school of painters while its high altar and pulpit are covered in gold and silver reliefs. The next stop is the imposing Inca fortress of Sacsayhuaman (3700m asl), which stands on a hill above Cusco. Explore the Qenqo Archaeological Complex before heading to Tambomachay.

After a morning of exploring, you'll have the remainder of the day at your own leisure. Why not stop by the Inka Museum (charges apply) or at the San Pedro market to view local produce?

Please note: Cusco is located in the Peruvian Andes at 3,399 metres above sea level, high altitude environments are classified as above 2500 metres above sea level. Please consult a medical professional if you have any concerns or to find out what preventative measures are available. Please refer to the 'Other important information' section for further information.

Overnight: Costa del Sol Wyndham Cusco or similar

Meals included: Breakfast

Day 5 Sacred Valley of the Incas

After breakfast, you'll journey into the Sacred Valley of the Incas. Passing the impressive ruins of Saqsaywaman, you'll cross the mountains before descending 450 metres to the fertile valley floor where the Urubamba River winds its way past picturesque villages.

The first stop is Pisac where you'll have time to browse colourful stalls filled with local handicrafts, textiles and souvenirs. Continue to the Pisac ruins to explore terraces, temples, tunnels and ceremonial altars on a guided tour.

Stop for lunch in Urubamba before driving on to Ollantaytambo, one of the most important Inca sites. Once the royal estate of Emperor Pachacuti, Ollantaytambo is both a living town and an archaeological wonder. Explore the Temple of the Sun, admire the colossal stone blocks and learn about the Inca's advanced agricultural terraces.



22-DAY CRUISE & TOUR PACKAGE | PATAGONIA & ANTARCTICA EXPEDITION

The Itinerary

Itinerary 2

In the late afternoon, you'll be transferred to the hotel in Urubamba where you can enjoy the evening at leisure.

Please note: You will need to prepare a smaller backpack (maximum 8 kilograms) to take with you to Aguas Calientes as luggage cannot be taken on the train. Your larger suitcases will be transferred to the hotel in Cusco for your return.

Overnight: Hotel Agustos Urubamba or similar

Meals included: Breakfast; Lunch

Day 6 Peru Expedition Train - Aguas Calientes

Following breakfast, head to the Ollantaytambo train station to embark on the PeruRail Expedition train bound for Aguas Calientes. As the train winds its way along the Urubamba River, you'll be treated to breathtaking views of the Sacred Valley with steep mountains rising dramatically on either side.

Nestled at the base of the mountains leading to Machu Picchu, Aguas Calientes blends traditional Andean life with a vibrant tourist scene. The largely pedestrianised town is filled with colourful markets, souvenir shops, cafés and restaurants. The town is also famous for its natural hot springs, where you'll have time to unwind in the steaming pools after your journey (at own expense).

For those wishing to experience a portion of the Inca Trail trek, you can join a supplementary tour of the Express Inca Trail (additional fees apply).

Optional Activity: Express Inca Trail Trek

Duration: Full Day

Fitness Level Required: Active/Demanding

In the morning, you'll be transferred from the hotel to board a 1.5-hour scenic train to Kilometre 104, the start of your Inca Trail Trek (timing depends on train scheduling). From here, hike approximately 4 hours to the Inca site of Wiñay Wayna ("Forever Young") which is approximately 2,680 metres above sea level. Built on a steep hillside overlooking the Urubamba River, this archaeological site has a series of 10 baths and numerous Inca buildings displaying high levels of Inca masonry. Afterwards, continue to Inti Punku (the Puerta del Sol) for the first spectacular view of Machu Picchu. Please see current pricing in Important Information.

Please note:

- *The Express Inca Trail Trek tour requires a moderate to high level of fitness. Participants will encounter uneven surfaces, steep inclines, numerous steps and trekking at high altitudes.*
- *Prior to undertaking this optional excursion, it's recommended to consult your GP to assess your suitability for the tour.*

Please note: Express Inca Trail Trek tickets are non-refundable and non-transferable. Once purchased, this optional activity cannot be refunded.

Overnight: Hatun Inti Boutique or similar

Meals included: Breakfast

Day 7 Machu Picchu

Today has an early start as, at approximately 05:40, you will be picked up to bus to the citadel of Machu Picchu.



22-DAY CRUISE & TOUR PACKAGE | PATAGONIA & ANTARCTICA EXPEDITION

The Itinerary

Itinerary 2

Pass through the gates into the Machu Picchu archaeological site. Here, you'll be guided on a 2-hour tour of this complex's most famous and spectacular parts. These include the House of the Guardian, Intihuatana, Temple of the Sun, Sacred Plaza and other key locations. As you walk around, you'll enjoy spectacular views across the agricultural terraces of Machu Picchu and across the surrounding mountains and plunging gorges.

Once you've finished the tour of Machu Picchu, take the bus back down to Aguas Calientes where you can relax and enjoy lunch (not included). You'll then board the train back to Poroy and travel by road to Cusco. Upon arrival at the station, a tour representative will wait for you to take you back to the hotel in Cusco, arriving around 19:00.

Please note: You will have time for breakfast before being picked up this morning.

Overnight: Costa del Sol Wyndham Cusco or similar

Meals included: Breakfast

Day 8 Cusco Free Day

After breakfast, enjoy a free day to explore Cusco at your own leisure. Alternatively, you can choose to participate in an optional activity.

Optional Activity: Maras & Moray

Take a captivating half-day tour after being picked up from your hotel at approximately 09:00. The journey to Moray takes about 1.5 hours, offering breathtaking views of the Andean landscape along the way. Pass golden wheat fields, charming traditional villages and majestic snow-capped mountains. Upon arrival at

Moray, explore its fascinating amphitheatre-like terraced structures. These circular terraces, believed to have been an agricultural laboratory for the Incas, showcase their innovative techniques for optimising crop growth. You'll then visit Maras to marvel at the ancient salt evaporation ponds carved into the mountainside. More than 3,000 pools collect salty spring water that evaporates to leave behind the renowned sal de Maras, a prized pink salt still harvested today. Please see current pricing in Important Information.

Optional Activity: Rainbow Mountain

Set off before sunrise on an unforgettable full-day adventure to Rainbow Mountain (Vinicunca). Your day begins with a 05:00 hotel pick-up from Cusco, followed by an approximately 3-hour scenic drive through the South Valley, where you'll enjoy breathtaking Andean landscapes and a delicious breakfast en route. Starting your hike in the small town of Pitumarca (3,310 metres), you'll follow a gentle path beside a tranquil stream with views of Mount Ausangate. After about 1.5 hours of hiking, you'll reach Rainbow Mountain, standing at an impressive 5,100 metres. Marvel at the vibrant mineral layers that create the mountain's iconic striped appearance and enjoy approximately 30 minutes at the summit to take in the panoramic views and snap photos. The return hike is approximately 1-hour, followed by a hearty buffet lunch at a local restaurant. Afterwards, sit back and relax during the 3-hour drive back to Cusco, arriving around 16:00. Please see current pricing in Important Information.

Optional Activity: Andean Cooking Class



22-DAY CRUISE & TOUR PACKAGE | PATAGONIA & ANTARCTICA EXPEDITION

The Itinerary

Itinerary 2

Begin your experience with a 09:30 pickup from your hotel, heading to the San Pedro Market in Cusco. Known as one of the city's most fascinating markets, it bursts with colourful stalls offering fresh produce, meats, spices, handicrafts and souvenirs. Before entering, you'll meet your chef guide who will explain the flow of the tour. Together, you'll wander through the market, learning about local ingredients, shopping tips and Andean food traditions. Along the way, you'll help select the fresh produce that will be used later in your cooking class. Afterwards, head to a local restaurant to prepare a traditional Peruvian dish. The group will then set the table and share the delicious dishes together. Please see current pricing in Important Information.

Optional Activity: Folklore Dinner & Show

At 19:00, make your way to a restaurant near Cusco's central Plaza de Armas for an unforgettable evening. Indulge in a fabulous buffet dinner featuring a wide selection of traditional dishes including meats, fish, vegetables and exquisite desserts. As you dine, the evening comes alive with a vibrant traditional dance show. Immerse yourself in the rich culture of the Andes with folk and classical music performed on traditional instruments like the quena, charango, flute and zampoña. For an even more memorable experience, you're welcome to join the dancers on the floor and become part of the celebration. Please see the current pricing in the Important Information section.

Please note:

- *The Rainbow Mountain Trek tour requires a moderate to high level of fitness. Participants will encounter uneven surfaces, steep inclines, numerous steps and trekking at high altitudes. Prior to undertaking this optional excursion, it's recommended to consult your GP to assess your suitability for the tour.*
- *Only one of the above activities can be chosen for today as the timings coincide with each other.*

Overnight: Costa del Sol Wyndham Cusco or similar

Meals included: Breakfast

Day 9 Cusco - Lima

Today, at the appropriate time, you'll be transferred to the airport for your onward flight to Lima. Upon arrival in Lima, make your own way to the airport hotel for an evening of rest before the adventure continues the following day.

Overnight: Costa del Sol Wyndham Lima Aeropuerto or similar

Meals included: Breakfast

Day 10 Lima, Peru - Buenos Aires, Argentina

Today, at the appropriate time, make your own way to the airport in Lima for your flight to Buenos Aires, Argentina. Upon arrival, you will be met by a tour representative and transferred to the hotel.

Overnight: NH Buenos Aires Tango or similar

Meals included: Breakfast



22-DAY CRUISE & TOUR PACKAGE | PATAGONIA & ANTARCTICA EXPEDITION

The Itinerary

Itinerary 2

Day 11 Buenos Aires City Tour & Tango Show

After breakfast, join a city tour of Buenos Aires to discover the charm of this vibrant metropolis.

Begin at Plaza de Mayo where you'll learn about the area's significance before heading to San Telmo. This is one of the city's oldest neighbourhoods, known for its cobblestone streets and antique shops. Explore the colourful neighbourhood of La Boca and visit other important landmarks such as La Casa Rosada (the Presidential Palace), the Cabildo (the colonial town hall) and the Neoclassical Metropolitan Cathedral. Finally, admire the celebrated Recoleta Cemetery, a labyrinth of ornate mausoleums.

Afterwards, return to your hotel and enjoy the afternoon at leisure.

In the evening, you'll be transferred to Cafe de los Angelitos for a 3-course dinner and unforgettable tango show. As a leading venue for tango, it preserves the luxury and distinction of a bygone era. Enjoy performances by tango orchestras, folk music, dancers and singers.

Overnight: NH Buenos Aires Tango or similar

Meals included: Breakfast; Dinner

Day 12 Buenos Aires Free Day

Enjoy a day at leisure in beautiful Buenos Aires to relax at the hotel or wander through the artistic district of Palermo.

Alternatively, you can choose to partake in an optional activity:

Optional Activity: The Argentine Experience

Experience Argentina's culinary culture in a unique, interactive dinner unlike any typical dining or cooking class. Over a seven-course, 17-dish tasting menu, you'll explore traditional flavors, regional ingredients and Argentine storytelling. You'll also engage by folding your own empanadas, preparing chimichurri and making yerba mate. Connect with fellow travellers as expert chefs guide you through the rich traditions of Argentine cuisine, paired with five exceptional wines. Please see current pricing in Important Information.

- **Welcome:** Patagonian trout tartar & Pét-Nat sparkling wine
- **Hands-On:** Empanada folding and chimichurri preparation
- **Memory on a Plate:** Savory chard fritters and farinata chickpea flatbread
- **Picada:** Chorizo, black sausage and grilled skirt steak
- **Beef Tasting:** Tenderloin with mushroom butter, slow-braised Thor's Hammer and grilled seasonal vegetables
- **Dessert Tasting:** Dulce de leche pancakes, chocotorta and dulce de leche flan
- **Mate Class:** Learn to prepare yerba mate, paired with alfajores filled with dulce de leche

Overnight: NH Buenos Aires Tango or similar

Meals included: Breakfast

Day 13 Buenos Aires - El Calafate

Today, at the appropriate time, you'll be transferred to the airport for your flight to El Calafate. Upon arrival, you'll be met by a tour representative and transferred to the hotel.



22-DAY CRUISE & TOUR PACKAGE | PATAGONIA & ANTARCTICA EXPEDITION

The Itinerary

Itinerary 2

El Calafate, known as the gateway to Los Glaciares National Park, is a charming Patagonian town surrounded by vast lakes, rugged mountains and shimmering ice fields.

Overnight: Calafate Parque or similar

Meals included: Breakfast

Day 14 Perito Moreno Glacier, Los Glaciares National Park

Today, you'll head to Perito Moreno Glacier in the Los Glaciares National Park. On the way, you'll be treated to the history of Argentino Lake and Rounded Bay. This area is populated by a large variety of birds including black-necked swans, flamingos, steamer ducks and more.

Perito Moreno Glacier is one of Argentina's most famous and awe-inspiring natural wonders. Standing before its 70-metre-high face and watching 100-tonne blocks of ice crash into the waters below is truly humbling. The Perito Moreno Glacier is over 30 kilometres in length and 5 kilometres wide at the face. Scattered with boardwalks and viewing platforms, you'll get close enough to the action to hear ruptures of ice collapsing into the water.

Total Duration: 8 hours

Walking Difficulty: Easy, stairs involved but gentle slopes.

Walking Distance: The catwalks are divided into 3 circuits. Guests can stop, rest and agree on a meeting point. A tour does not necessarily mean walking the entire balcony's path.

- **Central Balconies:** 600 metres (including 1st balcony, 2nd balcony and Northern balcony)
- **Lower Balcony:** 1,100 metres (including Lower balcony)

- **Coast's Balcony:** 1.117 metres (from the parking area up to the Northern balcony)

Please note:

- The route will be determined by weather conditions and physical condition as the available time to walk through is 1 to 3 hours.
- The excursion is usually organised as a full-day program.
- The visit provides enough time for lunch (boxed lunch provided). Box lunch menu choices will be asked to be picked at least 3 days in advance.
- It's recommended to pack warm clothes, a raincoat, jacket, waterproof trousers, hiking boots, sunglasses, sunscreen, gloves, hat and backpack.

Optional Activity: Perito Moreno Glacier Safari Boat

This 1-hour voyage visits the Rico branch of Argentino Lake to appreciate the majestic south wall of the Perito Moreno Glacier. This glacier ice wall is about 60 metres high and 100 metres below the lake level. The boat comes about 200 metres from where the glacier touches the Magallanes Peninsula and then goes for about 3 kilometres south. This tour is carried out on the boat Yagan, which has a capacity of 110 passengers. Boarding takes place at the port on the Bay "Under the Shadow", about 7 kilometres before the glacier viewpoint. Please see current pricing in Important Information.

Overnight: Calafate Parque or similar

Meals included: Breakfast; Lunch



22-DAY CRUISE & TOUR PACKAGE | PATAGONIA & ANTARCTICA EXPEDITION

The Itinerary

Itinerary 2

Day 15 El Calafate Free Day & Nativo Sunset Experience

Enjoy a full day at leisure to explore El Calafate, or choose to join one of the optional excursions available.

In the early evening (approximately 18:00), you'll be collected for an unforgettable Nativo experience in 4x4 vehicles. Journey along the shores of Argentino Lake which is surrounded by snow-capped mountains and fed by immense glaciers. Travel across dramatic cliffs overlooking the lake, learn about the encounters between early explorers and the native Tehuelche people, and take in sweeping views of the Patagonian landscape. Afterwards, enjoy a traditional dinner that's served inside a cave. The menu may include:

- *Homemade soup*
- *Lamb stew with vegetables on country bread (vegetarian option available)*
- *Chocolate mousse*
- *Wine, water or juice*

Optional Activity: Ranch Day at Nibepo Aike

Approximate tour timing: 08:30 - 16:00

Located in the heart of Los Glaciares National Park, Nibepo Aike Ranch perfectly blends history with nature. This experience offers an authentic introduction to life on a traditional Patagonian ranch, reflecting the heritage and rhythms of rural Patagonia. After about an hour's drive from the hotel, you'll be welcomed by the host with tea, coffee and traditional fried pastries. Take a gentle walk along the shores of Argentino Lake's Rico Canal where glacial erosion has sculpted dramatic rock formations and uniquely shaped beaches. The path leads through

lenga and ñire forests which are home to native wildlife including vultures and eagles. See a Gaucho skills demonstration (weather permitting) including reins testing, dressage and a hand-operated shearing demonstration, complete with insights into wool sorting and preparation. Visit the old main house to hear stories of the ranch's first inhabitants and stroll through the organic garden before a traditional meal at El Quincho restaurant. Please see current pricing in Important Information.

Optional Activity: All Glaciers Navigation

Approximate tour timing: 07:00 - 16:00

Walking difficulty: Low

Recommended packing: Warm clothing, a rain jacket, waterproof trousers, hiking boots, sunglasses, sunscreen, gloves, hat and backpack

This full-day tour offers a unique opportunity to experience Patagonia's most impressive glaciers, including Upsala and Spegazzini. From your hotel, transfer to Puerto Bandera Port and board a boat for the North Arm of Lake Argentino. Navigate past Boca del Diablo to the Upsala Canal, sailing among icebergs calved from the Upsala Glacier. Continue through the Spegazzini Channel to view the Dry Glacier before approaching the fronts of Spegazzini, Heim Sur and Peineta Glaciers. Disembark at Spegazzini Base for a short walk along the forest trail to the Spegazzini Refuge, stopping at viewpoints over the Bay of Glaciers. Lunch can be enjoyed at the refuge (not included), or you can simply take in the spectacular views. A 300-metre mountain path leads through wooded trails with stations covering glaciology, history and local fauna. This path is of



22-DAY CRUISE & TOUR PACKAGE | PATAGONIA & ANTARCTICA EXPEDITION

The Itinerary

Itinerary 2

medium difficulty with no technical challenges and offers multiple viewpoints along the way. The itinerary may change depending on weather and sailing conditions. Please see current pricing in Important Information.

Overnight: Calafate Parque or similar

Meals included: Breakfast; Dinner

Day 16 El Calafate Free Day

Today you'll have the day at leisure to independently explore El Calafate or alternatively you can choose to participate in an optional activity:

Optional Activity: Ranch Day at Nibepo Aike

Approximate tour timing: 08:30 - 16:00

Located in the heart of Los Glaciares National Park, Nibepo Aike Ranch perfectly blends history with nature. This experience offers an authentic introduction to life on a traditional Patagonian ranch, reflecting the heritage and rhythms of rural Patagonia. After about an hour's drive from the hotel, you'll be welcomed by the host with tea, coffee and traditional fried pastries. Take a gentle walk along the shores of Argentino Lake's Rico Canal where glacial erosion has sculpted dramatic rock formations and uniquely shaped beaches. The path leads through lenga and ñire forests which are home to native wildlife including vultures and eagles. See a Gaucho skills demonstration (weather permitting) including reins testing, dressage and a hand-operated shearing demonstration, complete with insights into wool sorting and preparation. Visit the old main house to hear stories of the

ranch's first inhabitants and stroll through the organic garden before a traditional meal at El Quincho restaurant. Please see current pricing in Important Information.

Optional Activity: All Glaciers Navigation

Approximate tour timing: 07:00 - 16:00

Walking difficulty: Low

Recommended packing: Warm clothing, a rain jacket, waterproof trousers, hiking boots, sunglasses, sunscreen, gloves, hat and backpack

This full-day tour offers a unique opportunity to experience Patagonia's most impressive glaciers, including Upsala and Spegazzini. From your hotel, transfer to Puerto Bandera Port and board a boat for the North Arm of Lake Argentino. Navigate past Boca del Diablo to the Upsala Canal, sailing among icebergs calved from the Upsala Glacier. Continue through the Spegazzini Channel to view the Dry Glacier before approaching the fronts of Spegazzini, Heim Sur and Peineta Glaciers. Disembark at Spegazzini Base for a short walk along the forest trail to the Spegazzini Refuge, stopping at viewpoints over the Bay of Glaciers. Lunch can be enjoyed at the refuge (not included), or you can simply take in the spectacular views. A 300-metre mountain path leads through wooded trails with stations covering glaciology, history and local fauna. This path is of medium difficulty with no technical challenges and offers multiple viewpoints along the way. The itinerary may change depending on weather and sailing conditions. Please see current pricing in Important Information.



22-DAY CRUISE & TOUR PACKAGE | PATAGONIA & ANTARCTICA EXPEDITION

The Itinerary

Itinerary 2

Optional Activity: El Chalten Full-Day Tour

Approximate tour timing: 07:30 - 20:30

Tour duration: 13 hours (the distance from El Calafate to El Chalten is 3 hours each way).

Walking distance: A guided hike to the Mirador de los Cóndores is approximately 1.5 - 2 hours, and Chorrillo del Salto is approximately 1.5 - 2 hours

Walking difficulty: These are considered easy walks

Recommended packing: Warm clothes, a raincoat, jacket, waterproof trousers, hiking boots, sunglasses, sunscreen, gloves, hat and backpack

Embark on an early adventure, heading towards the legendary Route 40 which skirts Argentino Lake before crossing the Santa Cruz and La Leona Rivers. Continue along Lake Viedma with the Andes in the background before reaching El Chalten. After travelling 3 hours and 220 kilometres, you'll arrive at the mountain village of El Chalten. Enjoy a guided hike to the Mirador de los Cóndores, a scenic viewpoint that offers a perfect introduction to the area's majestic surroundings. Break to enjoy a tasty packed lunch, essential fuel for the second half of the day. In the afternoon, the trail leads to Chorrillo del Salto, a hidden waterfall framed by forests and mountains. Please see current pricing in Important Information.

Overnight: Calafate Parque or similar

Meals included: Breakfast

Day 17 El Calafate - Ushuaia

Today, at the appropriate time, you'll be transferred to the airport for your flight to Ushuaia. Upon arrival, you'll be transferred to the hotel where you can enjoy the remainder of the day at leisure to explore the southernmost city in the world.

Overnight: Los Acebos Hotel or similar

Meals included: Breakfast

Day 18 Ushuaia - Board HX Expeditions Ship

This morning, you'll be transferred from the hotel to the cruise port. Here, a hybrid-powered, state-of-the-art HX Expeditions ship awaits. Once onboard, you'll attend a mandatory health and safety briefing before enjoying a welcome dinner hosted by the Expedition Team.

Overnight: MS Fridtjof Nansen

Meals included: Breakfast; Dinner

Day 19 Drake Passage

Today, the ship will cross the infamous Drake Passage, named after English sea captain Sir Francis Drake who stumbled upon it in 1578. With no landmass at this latitude, the waters can be turbulent. However, don't worry as HX's ultra-modern expedition ships easily handle the "Drake Shake."

The two-day journey across the 1000 kilometre-wide passage gives you time to prepare for your Antarctic adventure.

The Expedition Team will begin their lecture series in the onboard Science Centre, sharing their extensive experience and teaching you how to make your visit safe and sustainable. You'll also learn



22-DAY CRUISE & TOUR PACKAGE | PATAGONIA & ANTARCTICA EXPEDITION

The Itinerary

Itinerary 2

how to comply with IAATO guidelines, including wearing sterilised rubber boots when ashore and vacuuming your clothing to remove foreign contaminants. During this time, you can participate in exciting “Citizen Science” projects like whale counting, cloud observation and sample collection.

Take advantage of the other amenities by working out in the gym, relaxing in the Wellness Area or enjoying meals at any of the three exquisite restaurants. Don't forget to head out on deck to look for the first icebergs and spot wildlife like whales, dolphins and seabirds.

Overnight: MS Fridtjof Nanse

Meals included: Breakfast; Lunch; Dinner

Day 20 Drake Passage

Today, you'll continue your journey across the legendary Drake Passage. Take this opportunity to unwind and immerse yourself in the onboard experiences. With each passing hour, the excitement builds as you draw closer to the icy wonderland of Antarctica, which you'll arrive at the following day.

Overnight: MS Fridtjof Nanse

Meals included: Breakfast; Lunch; Dinner

Day 21 Antarctica

Land ho! Welcome to the icy wonderland of Antarctica. For the next five days, you'll be surrounded by vast icy waters, towering glaciers and colossal icebergs that seem to stretch into infinity. The sheer scale and beauty of the landscapes are almost otherworldly. The silence of this frozen world is often interrupted by the excited shouts of fellow passengers as penguins, seals and whales make their appearances.

Antarctica's landscape and wildlife are constantly evolving with the seasons. During the late spring months of October and November, the snow-covered terrain appears even more pristine, providing the perfect backdrop for penguins as they court and build their nests. By December and January, the arrival of more whales marks the height of summer, coinciding with the hatching of penguin chicks. February and March offer the ultimate whale-watching experience when large pods are drawn to the rich feeding grounds of krill in Antarctic waters.

Once you arrive, the Expedition Team will take every opportunity to explore the environment with you. Whether you're cruising through the ice or taking Zodiac landings, you'll get up close and personal with this frozen paradise. Spotting penguins from the ship is exhilarating, but the experience becomes even more awe-inspiring when you're on land, surrounded by these charming creatures. As you cruise in smaller explorer boats or take part in optional kayaking excursions, you may even encounter seals or whales right next to you. Be sure to keep your camera ready at all times to capture these unforgettable moments.



22-DAY CRUISE & TOUR PACKAGE | PATAGONIA & ANTARCTICA EXPEDITION

The Itinerary

Itinerary 2

To enrich your journey, the Expedition Team will share their expertise on a variety of fascinating topics, including the history of Antarctica and the intriguing science of glaciology. Every day will bring new discoveries and unforgettable experiences as you explore this awe-inspiring continent.

Overnight: MS Fridtjof Nanse

Meals included: Breakfast; Lunch; Dinner

Day 22 Antarctica

Be sure to speak with your Expedition Team onboard to book optional excursions for your time in Antarctica.

Optional Activity: Antarctica Camping

Duration: 10 hours

In the true style of the early explorers, venture out at night for a once-in-a-lifetime experience as you go camping in the Antarctic night. This activity features top-of-the-line camping equipment that meets Antarctic standards for camping on snow and ice. Imagine yourself sleeping under the Antarctic sky with little more than the thin wall of a tent separating you from the elements. The adventure starts with a pre-camp briefing by the expedition staff who accompany you on the activity. They set up your camp after dinner, with guests participating from beginning to end. If you have never pitched a tent before, this is your chance. After the camp is set up, you can either go to bed or sit outside and marvel at the stillness. Depending on the landing site, you may take short walks to nearby viewpoints and visit penguin colonies on the bright Antarctic night. If you like, wake up early, climb out of your tent and watch the sunrise. In the morning hours, take

down the camp, and the boats pick you up for the return trip to the ship. Back on board, enjoy a special breakfast and debrief the experience.

Please note:

- *This activity may have limited availability. If space becomes limited, participants will be chosen via a lottery-based lucky draw.*
- *As an IAATO member, HX adheres to all guidelines associated with onshore overnight stays in Antarctica. They leave nothing behind and remove all traces of their presence to protect wildlife and the fragile environment.*

Optional Activity: Antarctica Snowshoeing

Duration: 2 hours

Feel the spirit of the early Antarctic explorers. Join them for a walk on the wild side with snowshoes. Climb hills, cross glittering white plains and step on untouched landscape. The experienced Expedition Team will guide you to places with awe-inspiring views. You might even observe penguin colonies or even see whales swimming in the sea from above.

Optional Activity: Antarctica Kayaking

Duration: 3 hours

Merge with nature on an exceptional Antarctic sea kayaking adventure, getting up close to awe-inspiring icebergs and glaciers. Paddling through crystal-clear water you might spot seals, penguins and even whales. The experienced Expedition Team will take you to stunning Antarctic areas with high chances of encountering wildlife.



22-DAY CRUISE & TOUR PACKAGE | PATAGONIA & ANTARCTICA EXPEDITION

The Itinerary

Itinerary 2

Overnight: MS Fridtjof Nanse
Meals included: Breakfast; Lunch; Dinner

Day 23 Antarctica

Overnight: MS Fridtjof Nanse
Meals included: Breakfast; Lunch; Dinner

Day 24 Antarctica

Overnight: MS Fridtjof Nanse
Meals included: Breakfast; Lunch; Dinner

Day 25 Antarctica

Overnight: MS Fridtjof Nanse
Meals included: Breakfast; Lunch; Dinner

Day 26 Drake Passage

After having delved into the remote and wild continent of Antarctica, it will be time to set sail homeward bound. Crossing back over the Drake Passage, the Expedition Team will recount the journey's many experiences at the Science Centre.

Overnight: MS Fridtjof Nanse
Meals included: Breakfast; Lunch; Dinner

Day 27 Drake Passage

Overnight: MS Fridtjof Nanse
Meals included: Breakfast; Lunch; Dinner

Day 28 Disembark Cruise - Ushuaia - Buenos Aires

Today marks the final day of your unforgettable Antarctic adventure as the ship returns to Ushuaia. Having ventured to the bottom of the world, you've explored the remote and extraordinary Seventh Continent.

Upon arrival in Ushuaia, you'll disembark and transfer to the airport for your flight back to Buenos Aires. Once arrived, be transferred to the hotel where you can enjoy the remainder of the day at leisure.

Overnight: NH Buenos Aires Tango or similar
Meals included: Breakfast

Day 29 Buenos Aires, Argentina - Australia (or New Zealand)

Today, at the appropriate time, you'll be transferred to the airport in preparation for your return flight to Australia (or New Zealand).

Meals included: Breakfast

Day 30 In Transit

Sit back, relax and reminisce on the memories created on your trip through South America and Antarctica.

Meals included: None



22-DAY CRUISE & TOUR PACKAGE | PATAGONIA & ANTARCTICA EXPEDITION

The Itinerary

Itinerary 2

Day 31 Arrive Australia (or New Zealand)

Once arrived in Australia (or New Zealand), make your own onward travel arrangements.

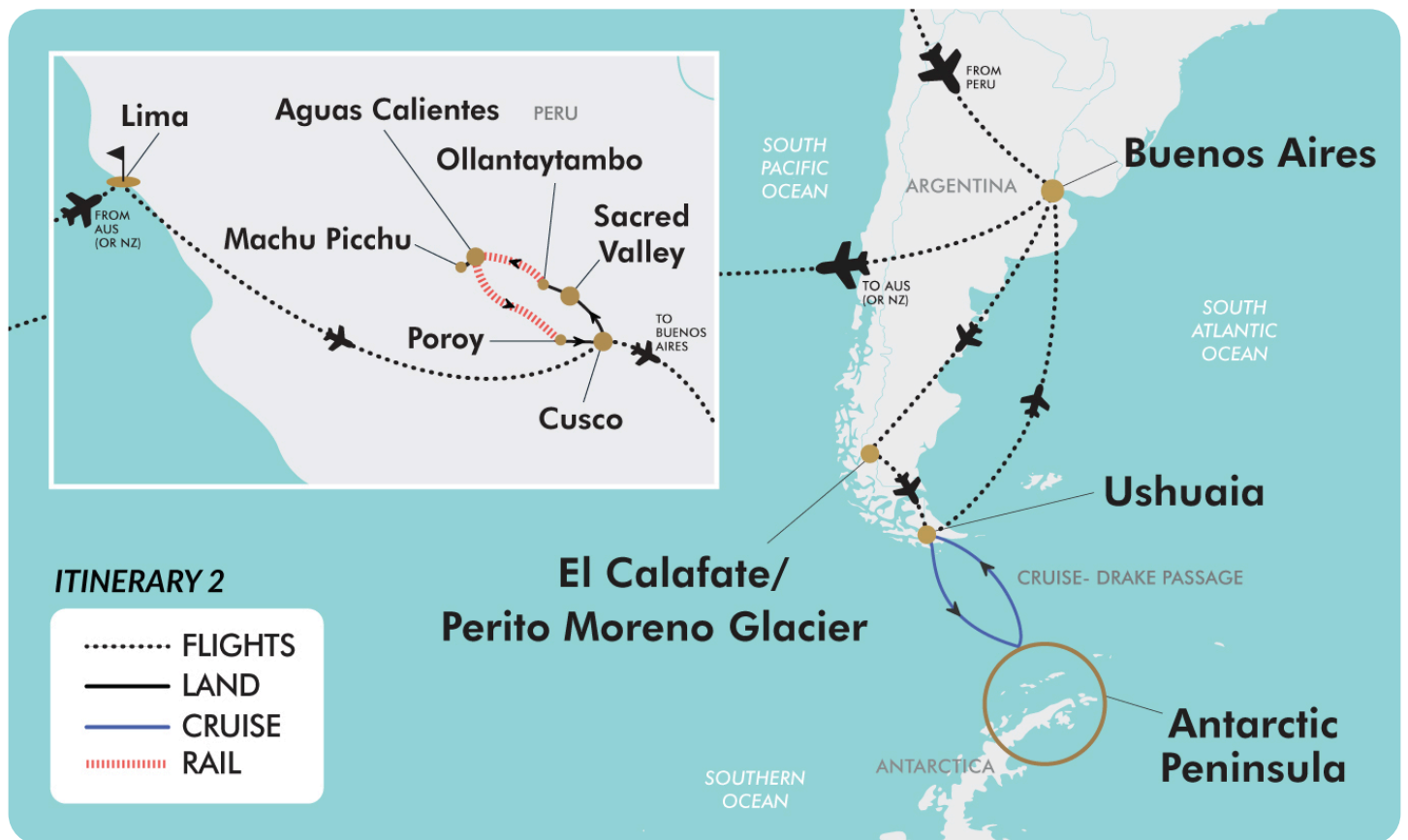
Meals included: None



22-DAY CRUISE & TOUR PACKAGE | PATAGONIA & ANTARCTICA EXPEDITION

The Map

Itinerary 2



Offer available for a limited time or until sold out. TRIP A DEAL PTY LTD: 50149240433

Updated: 20 May 2026 08:35:37

Have a question about this deal? We're here to help.
Call our friendly team on 1300 158 912



22-DAY CRUISE & TOUR PACKAGE | PATAGONIA & ANTARCTICA EXPEDITION

Tour Inclusions

HIGHLIGHTS

- Experience the best of Antarctica* and the stunning landscapes in Patagonia
- Cruise aboard a modern, state-of-the-art expedition vessel
- Discover El Calafate, known as the gateway to Los Glaciares National Park
- Be amazed by the massive Perito Moreno Glacier, one of the most visited glaciers in the world
- Experience the thunderous rupture of ice falling from glaciers
- Uncover the magic and beauty of Buenos Aires, Argentina
- Visit Lake Argentino, a UNESCO World Heritage site and Argentina's largest freshwater lake
- Visit the colourful San Telmo and La Boca districts in Buenos Aires
- Enjoy a 3-course dinner and tango show in Buenos Aires
- Seek out extraordinary wildlife including whales, playful orcas and seals
- Look out for soaring Antarctic seabirds, penguin colonies and more
- Cross the legendary Drake Passage, where the Atlantic meets the Pacific
- Set foot on the Great White Continent during expert-guided Zodiac excursions
- Deepen your knowledge with lectures from the onboard Expedition Team
- *Medical clearance is required prior to boarding for all expedition cruises to Antarctica

FLIGHTS

- Return international full-service flights (economy class), surcharges may apply
- All internal flights (economy class) within Argentina

CRUISE

- 10-night all-inclusive cruise with HX Expeditions
- Cruise aboard MS Fridjof Nansen
- Multiple small group Zodiac landings and activities
- Breakfast, lunch and dinner in Aune and Fredheim
- Delicious coffee, tea and soft drinks all day
- Drinks are available throughout the day and evening at no additional cost (excluding premium drinks)
- In-depth lectures and discussions by experts on the Expedition Team
- Full use of the Science Centre, extensive library and advanced biological and geological equipment
- Citizen Science Programme where you can assist with ongoing scientific research
- Photography tips and techniques from the onboard professional photographer
- Use of the ship's hot tubs, infinity pool, panoramic sauna, outdoor and indoor gyms, and running track
- Loan of boots, trekking poles and all equipment for activities
- Complimentary wind and water-resistant expedition jacket (or other HX Expedition kit)
- Informal gatherings with the crew for daily briefings
- Complimentary Wi-Fi onboard
- Gratuities included

ACCOMMODATION

- 8 nights of hotel accommodation

DINING

- 42 meals, including all while cruising



22-DAY CRUISE & TOUR PACKAGE | PATAGONIA & ANTARCTICA EXPEDITION

Tour Inclusions

ESSENTIALS

Airline and cruises taxes and surcharges

English-speaking tour guides

TRANSPORT

Transportation by air-conditioned private vehicles

TRANSFERS

All airport and cruise port transfers

ITINERARY 2

All of the above, plus the following:

Highlights

Immerse yourself in historic Lima with a city tour

Explore Huaca Pucllana and the UNESCO-listed Plaza Mayor de Lima

Witness the awe-inspiring Andes Mountains

Discover ancient ruins and vibrant markets in the Sacred Valley

Behold the mystical allure of Machu Picchu

Relax in Aguas Calientes, nestled amidst soothing hot springs

Uncover the rich history of the Inca Empire on a tour of Cusco

Marvel at architectural wonders like the Temple of the Sun

Enjoy time at leisure in enchanting Cusco

Flights

One-way international flight (economy class) to Lima, Peru

One-way international flight (economy class) from Lima, Peru to Buenos Aires, Argentina

All internal flights (economy class) within Peru

Accommodation

10 additional nights of 3 and 4-star accommodation

Dining

9 meals included

Essentials

Museum and archaeological site entrances as per itinerary

Transport

Round-trip train tickets to Aguas Calientes aboard the Expedition Train

Round-trip bus ticket from Aguas Calientes to Machu Picchu

Transfers



22-DAY CRUISE & TOUR PACKAGE | PATAGONIA & ANTARCTICA EXPEDITION

Tour Inclusions

All transfers, except on Days 9 and 10 when airport hotel accommodation is provided

Important Information

**Please note: All information provided in this brochure is subject to both change and availability. Prior to purchase please check the current deal for up-to-date information. If you have already purchased this deal, the terms and conditions on your Purchase Confirmation apply and take precedence over the information in this brochure.*

Booking Information

After purchase, you will receive a receipt and a Purchase Confirmation, directing you to an online Passenger Information Form. You must complete the Passenger Information Form within 72 hours of purchase.

Any special requests, preferences and optional extras MUST be clearly stated in your Passenger Information Form. Any change requested after submitting your Passenger Information Form cannot be guaranteed, is strictly subject to availability and will incur surcharges as outlined in the Schedule of Fees below.

Please note: All countries and territories have different entry requirements in relation to vaccinations, quarantine/isolation periods and travel restrictions. Due to the evolving nature, we would ask all of our customers to monitor, meet and adhere to the specific requirements of their intended destination(s) in the lead-up to and immediately before travel, as well as any requirements post-travel upon their return.

Our Policies

Cancellation & Refund Policy

By placing a booking with us, you acknowledge the following important information:

- **we act as your booking agent ;**

TripADeal is a booking services provider, and curates the Travel Offers available on our website. We act as your booking agent, and we receive payment for the Booking Services as part of the booking price, however, we do not provide any of the Travel Services (flights, accommodation, tours or other products or services) included in your booking – the Travel Services are provided by a number of third party Travel Suppliers.

- **each booking is unique ;** our Travel Offers are made up of a variety of different components and are, during the booking process, uniquely tailored to suit your requirements, for example, departure dates and ports, flight and room upgrades, tour inclusions, etc.

- **changes/modifications to your booking may not be possible ;** once your booking has been made, changes or modifications may not be possible, and where possible, may incur a fee. It is important to ensure that the information you provide during the booking process is accurate and up to date, and that you read the Travel Offer carefully before placing your order.

- **Travel Offers are a package ;** our Travel Offers have been curated into package offerings and must be used as a package – individual components cannot be used independently of the full package offering.

- **our Travel Offers are generally non-refundable ;** in order to provide great value Travel Offers, we work with a variety of Travel Suppliers to find the best deals – this often means the Travel Suppliers' offerings are non-refundable to ensure the best price. We recommend that you obtain travel insurance as soon as you make a booking with us. If your plans change, you can receive a full refund (excluding credit card fees) if you cancel at least 12 months in advance to your scheduled departure date.

To read more about our Cancellation and Refund Policy, please [click here](#).

General Terms & Conditions

By placing your booking with us, you acknowledge and agree to our [Terms & Conditions](#), [Privacy Policy](#) and [Cancellation Policy](#).

Offer Essentials

This Travel Offer is valid for travel on selected dates until the 10th February 2027.

Minimum group size 10, maximum group size 20 per vehicle.

This Travel Offer is priced per person

based on a twin share.

Departure Dates & Surcharges

See checkout for live dates and availability.

Single Traveller Supplement

Cruise

For solo travellers a select number of solo cabins are available for these departures. Please see the cart for pricing details and availability.

Land

Accommodation for single customers who are travelling may be in a single room, depending on availability.

Child Policy

- No child discounts are offered. The full price applies to all children travelling with their parents.
- Valid for children 12 years old and over.

Please note: Children must be accompanied by a responsible adult 18 years old and over to travel. No unaccompanied minors are allowed.

Flights

Departure Cities

Sydney, Melbourne, *Brisbane, *Adelaide, *Perth or Auckland

Departure City Surcharges

- Brisbane & Adelaide: \$300 per person
- Perth: \$400 per person

International Flight(s)

Full-Service Airline(s) Used

- Cabin Class: Economy Class

Please note:

- *We cannot accommodate one-way flights. Travellers must take all included flights within the package, and any flights intentionally forfeited will result in later flights being subject to cancellation.*

Important Information

- *From Australia and New Zealand, the flying journey to your destination may take up to 35 hours, with up to 2 stops. This is provided as a guide only - actual flight duration can vary depending on availability and airline schedules. Your booking's final details will be confirmed to you via email once available.*

Internal Flight(s) Used: Itinerary 1

- Cabin Class: Economy Class

Route

- Argentina
- Buenos Aires - El Calafate
- El Calafate - Ushuaia
- Ushuaia - Buenos Aires

Internal Flight(s) Used: Itinerary 2

- Cabin Class: Economy Class

Route

- Peru
- Lima - Cusco (return)
- Argentina
- Buenos Aires - El Calafate
- El Calafate - Ushuaia
- Ushuaia - Buenos Aires

Baggage allowance per person:

- 1 x 7kg of carry on baggage
- 1 x 15kg of checked baggage

Please note: Aerolineas Argentinas will be operating the domestic flights and have a checked luggage limit of 15 kilograms per person. Unfortunately, TripADeal is unable to increase this amount during the booking process. Any baggage in addition to this will incur fees at the airport, which will be the responsibility of the traveller at the time of check-in and paid directly to the airline. We recommend all travellers keep this in mind when packing for their holiday, regardless of the limits allowed on your long-haul international sectors.

Preferred Airline Surcharge

Not available.

Arrive Early & Stay Behind Options

Fly out and return home up to 60 days pre and post your tour dates.

Arrive Early

- Buenos Aires, Argentina - From \$300 per person, subject to availability (Itinerary 1).
- Lima, Peru - From \$300 per person, subject to availability (Itinerary 2).
- Santiago, Chile - From \$300 per person, subject to availability.

Stay Behind

- Buenos Aires, Argentina - From \$300 per person, subject to availability.
- Santiago, Chile - From \$300 per person, subject to availability.

Please note:

● Exclusions:

This fee does not include extra nights' accommodation, meals or airport transfers.

● Internal Flights:

If you select to Arrive Early or Stay Behind in a city other than the one where the tour starts or ends, the package will include an internal flight to your destination. If you wish to forfeit this flight, please advise our friendly team at the time of purchase. Please note that the cost does not change when you choose to forfeit your connecting flight.

● Cancellations & Changes:

Flight booking changes or cancellations after air tickets have been issued are not guaranteed and may incur additional fees and fare difference, subject to the airline cancellation and change policies. Flight changes are subject to availability at the time of booking.

● High Season:

A high-season Arrive Early or Stay Behind can be purchased for an additional charge, subject to availability. For pricing, please refer to the cart.

● + 60 Days:

You can fly out up to 60 days before your package's start date, and/or return home 60 days after your package's end date. Should you wish to fly out or return home for more than 60 days from the tour, please contact us to request availability. Additional costs may apply.

● Estimated Dates:

Your estimated departure, return, and arrival dates are all subject to availability and may vary. The confirmed schedule for all flights will be provided when you receive your flight tickets.

● High season surcharges apply to flights departing between the below date ranges:

- 1st December 2025 - 31st January 2026
- 3rd April 2026 - 20th April 2026
- 26th June 2026 - 17th July 2026
- 18th September 2026 - 9th October 2026
- 12th December 2026 - 26th January 2027
- 19th March 2027 - 28th April 2027
- 19th June 2027 - 18th July 2027
- 11th September 2027 - 10th October 2027
- 10th December 2027 - 3rd January 2028

Stopover Packages

- Santiago, Chile
Includes:
 - 2, 3 or 5 nights in 4-star accommodation
 - Daily breakfast
 - Return airport transfers
- For pricing, please refer to the payment cart at checkout.
- When a pre and post-tour stopover is chosen, the same stopover location must be chosen each way, due to the airline used.
 - When selecting to Arrive Early for your tour in conjunction with a Stopover Package, your fly out date from home will take place before the stopover.
 - When selecting to Stay Behind after your tour in conjunction with a Stopover Package, your stopover will take place before your final flight home.
 - Stopover packages are subject to availability.

Important Information

- In the event that a purchased stopover package and a purchased preferred airline upgrade are not compatible, you will have the option to receive a refund for the preferred airline upgrade or be offered an alternative stopover city option, e.g if you choose to fly with Singapore Airlines you cannot stopover in Dubai.
- Blackout dates apply to flights departing between the below date ranges:
26th June 2026 - 17th July 2026
18th September 2026 - 9th October 2026
12th December 2026 - 18th December 2026
19th December 2026 - 3rd January 2027
4th January 2027 - 26th January 2027
19th March 2027 - 28th April 2027

Flight Class Upgrades

Business Class: For pricing, please refer to the payment cart at checkout.

Please note:

- *Flight upgrades are subject to availability and pricing changes (if we cannot fulfil your request, the upgrade cost will be refunded).*
- *On any upgrade purchase, short-haul flights and domestic flight sectors are not guaranteed.*

Outbound Flights

Please note: Due to flight scheduling and availability, some departures may occur on Day 0. Affected customers must be available to depart the day before. Flight times will be indicated on your final documents, issued 4-6 weeks before departure.

Missed Flights

If you fail to arrive for your outbound flight, you risk all flight and land arrangements in your destination being automatically cancelled by the airlines and land operator, respectively. Additional fees may apply to reinstate these services. If you miss your flight for whatever reason, please contact us as soon as possible to make arrangements.

Cruise

Medical Disclaimer

Travel to Antarctica is physically demanding, and our Travel Suppliers require all guests to obtain medical clearance before departure even if you don't intend to disembark at Antarctica. This involves completing a medical form and may require medical clearance from a doctor, which could incur additional costs. Any guests who fail to provide the necessary medical documentation will be denied boarding.

Ship: HX Expeditions MS Fridtjof Nansen

Featuring HX Expeditions' revolutionary battery hybrid powered propulsion system, MS Fridtjof Nansen is a near identical twin to her sister ship, MS Roald Amundsen. Combining state-of-the-art technology and premium onboard experience with 130 years of experience and unparalleled destinations, the Norwegian-built ship introduces the next generation of adventure travel.

Facilities Onboard

Cabins & Public Areas

The stunning scenery will be reflected in a rich and comfortable interior design. Scandinavian materials from nature, such as granite, oak, birch and wool will be used to create relaxed and stylish cabins and public areas. All cabins are outside and 50% with a private balcony.

Science Centre

The core of the onboard experience is the Science Centre, an edutainment venue where guests and crew meet to create a deeper understanding of the areas we explore. The Science Centre will also be the onboard HQ for the Expedition Team.

Restaurants

Three onboard restaurants will host a variety of dining options, with menus drawn from rich Norwegian and Nordic traditions, as well as international cuisine and local inspiration. Whether enjoying your meal at Aune Main Dining, Fredheim, the informal international meeting place, or the specialty restaurant Lindstrøm, you

will indulge in low-key yet refined, modern Norwegian Nordic cooking, where our honest and delicious cuisine reflects our destinations.

Everything You Need For An Expedition Cruise

Each expedition voyage is accompanied by a hand-picked team of specialists and modern-day explorers. Highly experienced, passionate and knowledgeable, the Expedition Team will be your guides and guardians on your voyage of exploration, instructing you on safety, sustainability and science. 'MS Fridtjof Nansen' and 'MS Roald Amundsen' will feature a variety of custom-built expedition equipment including kayaks, a fleet of Blueeye underwater drones and Expedition Boats for safe landings in remote areas.

Onboard Currency

EUR

Cabins/Staterooms

RR - Polar Outside

The Polar Outside cabins are primarily on the middle decks. Most are 20 square metres with windows and flexible sleeping arrangements, as well as a TV and a bathroom with a shower. Larger cabins on lower and middle decks are 19 - 23 metres squared with flexible sleeping arrangements, a double bed that can be divided into two single beds (some with a sofa bed) and a TV.

XT/XTD - Arctic Superior Cabins

Arctic Superior cabins are comfortable and roomy and have a balcony. These are high-deck cabins with a balcony. The spacious cabins are of different sizes with flexible sleeping arrangements (some with sofa beds), TV, kettle, tea and coffee.

Please note:

- *Cruise timetables are subject to change.*
- *Some cruise cabins may have restricted views, based on availability.*

Important Information

- *Cruise cabins are booked on a guaranteed basis and are assigned by the cruise line prior to departure. Your cruise cabin number will be reflected in your final documents.*

What To Pack For An Expedition Cruise

To make packing a bit easier, HX Expeditions has drawn up a packing list. If you should forget something, don't worry! On board all the ships you will find a shop with a wide range of clothes and practical items.

- Onboard it's smart to wear ordinary shoes
- Bring a memory card with a large capacity, there are sockets in the cabins to recharge photo equipment.
- The dress code aboard the ship is relaxed and casual and you are not expected to dress formally for meals.
- Extra shoelaces are also a good idea.
- Bring a good pair of binoculars.
- A small waterproof backpack is necessary for carrying essentials.
- Bring your passport and a copy of it.
- Sun protection.
- Sunglasses with UV filter lenses.
- Lip balm with UV protection. Dry, cold wind and sun often cause chapped lips.
- Money in the correct currency. Remember, the ships also accept several credit cards.
- Remember to bring sufficient medication to last through any unforeseen delays.
- You will receive a wind and water-resistant parka as a memento on this ship (or another piece of HX kit).
- Rubber boots are available on loan, at no extra cost

Expeditions To Polar Waters

- Warm winter jacket
- Wind and water-resistant trousers long thermal underwear and a top (we recommend wool)
- Warm cap or headband
- Swimwear for use in the on-deck whirlpools
- A scarf or fleece tube
- Warm woollen jumper and fleece jumper/jacket, remember layers are essential

- Sunglasses with UV filter lenses
- Gloves and mittens, fleece and wool
- Warm socks
- Extra batteries for your camera, as battery life is shorter in cold areas
- Shoes with good soles are recommended for outdoors, on deck, and for excursions ashore. Make sure they are worn-in walking boots

Cruise Arrival & Departure Times

Please keep in mind that the provided cruise arrival and departure times are an approximate and will be finalised upon receipt of your cruise tickets.

Accommodation

Itinerary 1

4-Star Properties (Self-Rated)

- Buenos Aires, Argentina: NH Buenos Aires Tango Aires or similar
- El Calafate, Argentina: Calafate Parque or similar

Speciality Properties

Ushuaia, Argentina: Los Acebos Hotel or similar

Itinerary 2

4-Star Properties (Self-Rated)

- Lima, Peru: Jose Antonio Lima Hotel or similar
- Cusco, Peru: Costa del Sol Wyndham or similar
- Aguas Calientes, Peru: Hatun Into Boutique or similar
- Lima Airport, Peru: Costa del Sol Wyndham Lima Aeropuerto or similar

3-Star Properties (Self-Rated)

Urubamba, Peru: Hotel Agustos Urubamba or similar

Please note: Accommodation/rooms offered are based on a lead-in room type and are subject to availability based on seasonality. In the instance a property is not available, a similar standard of accommodation will be provided. Properties will be confirmed and included in your travel pack, which you will receive 4-6 weeks before travel.

Extra Nights

Not available.

Maximum Room Capacity

2 people.

Triple Share

Not available.

Bedding Configuration

Twin or double (subject to availability).

Optional Tours/activities

- The Argentine Experience - \$175 per person
- Safari Boat at Perito Moreno Glacier - \$165 per person
- Ranch Day at Nibepo Aike - \$215 per person
- All Glaciers Navigation - \$525 per person
- El Chalten Full Day Tour - \$395 per person

Itinerary 2 Only

- Express Inca Trail Trek - \$690 per person (non-refundable, non-transferable)
- Maras & Moray - \$85 per person
- Rainbow Mountain Trek - \$175 per person
- Andean Cooking Class - \$160 per person
- Folklore Dinner & Show - \$50 per person

Please note:

- *Prices are based per person, are subject to availability, time permitting and weather conditions*
- *The optional tours listed above must be purchased on checkout or over the phone before submitting your passenger information form (subject to availability).*
- *Some tours or shore excursions require minimum numbers to operate.*
- *Shore excursions can be booked/reserved directly with the cruise line before travel (subject to availability)*
- *Shore excursions can also be booked whilst onboard (subject to availability).*

Important Information

- *Shore excursion programmes and itineraries may vary depending on local conditions and/or any unforeseen events concerning the timing on the day of the tour. Some excursions are very popular, and therefore availability cannot always be guaranteed, it is advisable to book in advance to avoid disappointment.*

Exclusions

- Visa fees and requirements
- Domestic transfers and flights not stated in the deal offer
- Meals/beverages not stated in the deal offer
- Optional gratuities/tipping
- Optional activities/tours
- Personal expenses
- Travel insurance
- Any costs associated with an interruption to your tour as a result of an airline schedule change or cancellation
- Mandatory city tax

Gratuities/tipping

Land

Gratuities (tips) are not included for the services of the tour leader (when available) and driver throughout the tour. The recommended tip is \$10-15 USD per person per day. This covers the guide/leader and the driver and will be collected on tour.

Please note: Tipping for services provided is always a matter of personal discretion; however, please be aware that many locals consider tipping part of their normal remuneration, and they may approach you for payment; there's no need to be intimidated by the request.

Cruise

It is not standard practice to tip on HX Expeditions ships, but if you feel that certain crew members should be rewarded for providing exceptional service, there are tip boxes in the restaurant together with envelopes.

Other Important Information

TOUR GUIDE VS. TOUR LEADER

Tour Guide

Often locals with intimate knowledge of an area, its culture, and history. Their role entails providing commentary, routing the tour, and seeing that people have a good time. They are a licensed, qualified expert who supplies specific information on the history, art, architecture and culture of the city/village/attraction where they are guiding the tour. The guide meets the group at the required place and leaves it at the end of the tour; they do not travel with the group.

Tour Leader

An experienced person tasked with ensuring the smooth operation of tours, as well as providing practical support to passengers throughout the whole trip. Their role primarily includes assisting with accommodation, transportation between locations, and communication with tour guides at each stop. A tour leader may provide general guidance around a city or village and offer information on the place visited on the bus. However, they are not required to have specific art, architecture, or historical knowledge. They are not allowed to provide a guided tour or commentary of a city/village/attraction once there and, if caught doing so, can be fined.

Please note: Tour leaders/guides are not a standard inclusion in all travel offers. Tour leaders/guides will only be made available when required to enhance the experience of the destination featured.

CLIMATE & AVERAGE TEMPERATURES

Buenos Aires, Argentina

In December, average temperatures in Buenos Aires range from 18°C to 29°C with gentle breezes. January is considered the hottest month in Buenos Aires, and temperatures can range from 20°C to 30°C. You can expect to experience 14-15 hours of clear and sunny skies during these months and mid to high humidity.

Patagonia, Argentina

October - April

The weather in Patagonia is mostly mild, between lows of 4°C and highs of 18°C. In their summer months (December to February), this is the height of their growth season, so you will definitely see landscapes full of greenery. There will be warmer days and cool nights and potentially strong winds and rains. This is generally the peak tourist season. Argentina can be hot and humid during their summer months with potential rains. You can expect temperatures in Argentina to range from 19°C to 30°C. Southern Chile experiences temperatures of 12°C to 25°C.

Seasons in Antarctica

Antarctica only has two seasons which are summer and winter. Because it's located in the southern hemisphere, Antarctica's summer is from October to February. During this time, the sun is almost always in the sky. Days rapidly get longer there in summer, until, eventually, the sun doesn't set at all. This phenomenon is called the Midnight Sun. Although there are multiple places in the northern hemisphere that experience this perpetual sunlight during half of the year, Antarctica is the only southern location where it can be seen. January is the warmest month in Antarctica, during which average temperatures climb all the way up to 0 degrees in the Antarctic Peninsula. However, the average temperature ranges from -10 degrees celsius to -60 degrees, depending on how far into the continent you travel.

If anyone is in Antarctica once winter comes, they're staying until summer returns. Flights and ships cease travel to and from Antarctica once the weather starts to turn, as conditions become too treacherous for travel. Typically, researchers are the only people who brave the Antarctic night. This is a valuable time for astronomers, who can use complete darkness to get spectacular views of the universe. Climatologists are also busy during this time of year tracking and comparing the temperatures on and below

Important Information

the continent's surface.

Late Summer Cruising In Antarctica

February - March

If you choose to go on an Antarctica cruise in February or March, you will be seeing the continent during its late summer period. This provides a variety of benefits, including the ability to explore more thoroughly as the ice melts and breaks apart, allowing for a high chance of seeing whales on the Peninsula.

What Whales Might You See?

Late summer is the best time to see whales in Antarctica. It is most common to see Humpback whales, minke whales and killer whales, though it's possible to see many other species as well. These can include blue whales, fin whales, sei whales, southern right whales and sperm whales.

What About Penguins?

By March, those adorable penguin chicks are growing up. They begin to fledge and grow into their adult feathers, while their parents may already have gone out to sea to begin to prepare for their own moulting season.

Why Go During This Season?

If you're an explorer who wants to see as much of Antarctica as possible, choose a late-summer cruise. As the polar ice melts, you'll have access to points much farther south than you would during other travel seasons. You will certainly see some wildlife, as well, and will get to know the untouched majesty of Antarctica in this particular form.

Itinerary 2 Only

Lima, Peru

Lima is usually described as mild and warm throughout the year without much noteworthy rain, making Lima one of the driest capitals in the world. The average temperatures range from 18°C to 28°C.

Cusco, Peru

Cusco, located in the Andes Mountains of Peru, has a highland climate with distinct dry and wet seasons. The city's elevation, approximately 3,400 metres above sea level, contributes to its cooler temperatures.

Dry Season (May - October)

This period is considered winter in Cusco and is characterised by dry and sunny weather. Days are generally clear, and temperatures can range from around 10°C to 20°C. However, nights can be quite chilly, with temperatures dropping to around 0°C.

Wet Season (November - April)

Cusco's wet season coincides with the summer months. During this time, there is a higher chance of rainfall, and the weather can be more unpredictable. Daytime temperatures are still mild, ranging from 12°C to 18°C, but nights are relatively milder compared to the dry season.

It's important to note that due to its high altitude, Cusco's weather can vary significantly throughout the day. Visitors are advised to bring layers, including warm clothing for cooler evenings and mornings, as well as sun protection for the strong mountain sun during the day.

Weather

We always suggest referring to an online source for the most up-to-date weather information for your destination/s.

FLIGHTS

Seat Selection & Frequent Flyer Points

We do not arrange seat selection. It is essential to highlight that some airlines do not allow pre-selected seats. We strongly suggest you contact the airline directly with seating allocation requirements and/or arrive at the airport earlier to arrange your seating. While we do not add frequent flyer member details to bookings, you can do this directly with the airline once you have your flight information.

Dietary Requests

Meal options and availability differ between airlines and routes therefore not all dietary requests can be accommodated. If your flight includes meals we will select the most suitable option available based on the dietary requirements you have specified. All meal requests are subject to airline approval and are not guaranteed, therefore we recommend preparing for your flight by bringing appropriate food for yourself, as required.

Passport Validity

Customers must provide valid passport details either at the time of purchase or no later than 120 days before the departure date. Failure to do so may result in the cancellation of the booking. Customers will be responsible for any costs and fees incurred in this instance.

CRUISE

Embarkation/Disembarkation

- Begins approximately 2 hours after docking.
- Due to security reasons, all guests must be on board 2 hours before sailing.
- Itineraries are subject to change at any time without notice.
- Check your specific sailing for exact departure and arrival times. All times are local to the port.

Please note: Strict Covid-19 terms may also apply regarding proof of insurance covering Covid-19 and/or vaccination. Please refer to the cruise lines' terms and conditions for further information before boarding.

Cruise Loyalty Discounts

Please note: Travellers must contact the cruise line directly upon receiving their travel documents in order to request any membership benefits they may be entitled to.

COACH TOUR

Meals

For meals not included, the tour leader (when available) will offer assistance with reservations, suggestions and directions to local restaurants. It is your responsibility to notify us of any dietary requests/

Important Information

requirements.

Please note: We will do our best to meet your requests/requirements; however, we cannot guarantee that we will always be able to.

Luggage

You will be responsible for all your personal belongings whilst on tour. You must carry your own luggage from the vehicle to the hotel room and back to the vehicle. The driver will assist with the uploading and unloading of bags from the vehicle.

OTHER

Mobility

If you require wheelchair access please contact our friendly sales and service team to inquire on your behalf.

Fitness Level Required

Adventure (and spontaneity) create some of the best travel memories. Bear in mind, your home schedules and timings might not be adhered to on tour - it's all part of the fun!

A moderate level of fitness will be required. Expect a steady pace of touring with guided activities that may run for a full day. This can include nature walks, exploring gorges, and visiting sites that involve walking longer distances, standing for extended periods, and navigating stairs, inclines, or uneven ground. Travellers should be prepared for rocky terrain, loose surfaces, and occasional steep tracks. You will need to manage your own luggage and board all modes of transport without assistance. This tour is not suitable for wheelchairs, mobility scooters, or travellers requiring significant assistance - please contact our sales team if you are unsure if this tour is suitable for you.

Please note:

- *It is expected that every traveller must be self-reliant and able to undertake all aspects of their own travel. Please speak to your booking agent about your personal circumstances and any assistance requirements to ensure this tour is right for you.*

- *If you have any concerns, please consult your healthcare provider prior to purchase/travel.*

High Altitude Sickness

Altitude sickness can occur at high elevations when the body receives less oxygen. It can affect anyone, regardless of age or fitness, with symptoms such as headache, nausea, dizziness, fatigue, and shortness of breath.

Tips to help prevent altitude sickness:

- Stay well hydrated and eat light, high-carbohydrate meals
- Avoid overexertion during the first 24–48 hours at high altitudes
- Limit alcohol and avoid smoking
- Consult your healthcare professional about preventive medications or your suitability for travel to high-altitude areas

Our local tour providers are trained in first aid, including high-altitude care, and have oxygen available for guests if needed. Medications are also readily available in Cusco.

Please note: Inoculations may be required to enter the country visited, along with re-entry into Australia after your visit. It is your responsibility to consult with your travel doctor for up-to-date medical travel information well before departure.

Express Inca Trail Trek & Rainbow Mountain Trek Optional Activities

Active/demanding, these are more strenuous activities, suitable for a good fitness level and for guests who exercise regularly. More fast-paced activities and walking on uneven surfaces. A high fitness level is required to undertake activities, which include high-altitude trekking for anywhere between four to seven hours per day for an extended number of days. Recommended for active travellers with some previous trekking experience.

Please note: If you have any concerns, please consult your healthcare provider prior to purchase/travel.

Yellow Fever

A valid international certificate of vaccination against Yellow Fever is

required in many countries. You may need to present this on arrival at the airport or border crossing. Some countries will refuse entry if you are unable to present your certificate. It's also common for your home country to request a Yellow Fever certificate upon arrival.

You must check with your doctor well before leaving home about the Yellow Fever requirements for the countries you'll be visiting.

Sightseeing

Please note: If entry to a site is affected by changes in operating hours or public holiday closures, your itinerary, where possible, may be adjusted, or a similar activity will be offered in its place (subject to availability).

Wildlife

TripADeal cannot guarantee animal sightings. Wildlife are unpredictable and factors such as weather conditions, predatory fear and animal movements can impact sightings.

Shopping

Shopping overseas can be a daunting and confusing experience, especially when there is a language barrier. Please be very cautious when foreign currencies and prices are involved. If paying by credit card, please pay close attention to the amount you are being charged and keep all your receipts. Do not make any purchases you are not comfortable with or feel pressured into. If you are uncertain or need assistance with the language barrier, please seek assistance from your Tour Guide/Leader. Please refer to our [Terms and Conditions](#) regarding shopping for further information.

Visas

Argentina

As a tourist, you can stay for up to 90 days without a visa, but you'll need evidence that you intend to depart the country within the 90 days, along with the following:

- A return or onward ticket and valid passport.

Important Information

- Travel/medical insurance.

Please note:

- *Officials may also ask for proof of accommodation and evidence that you have enough money or a credit card to cover your trip.*
- *Effective immediately, all international travellers to Argentina must hold valid travel insurance with medical coverage. This insurance may be requested and verified upon arrival in the country. Argentina's public healthcare system will no longer provide free medical services to foreign nationals. It is therefore essential that you obtain appropriate insurance before your departure.*

Peru

Tourists don't need a visa. You can get a permit to stay for up to 3 months when you arrive. You may need a valid yellow fever vaccination certificate to enter Peru. Some airlines may want to see one when you leave. If you've visited Peru in the previous 6 days, you'll need a valid certificate to enter Australia.

Chile

As of 17th September 2025, tourist visas for Chile are not required if travelling on an Australian Passport. You can stay in Chile for up to 90 days without a visa. If you're unsure whether you need a visa, contact the nearest embassy or consulate of Chile.

New Zealand (Transiting)

If you do not hold an Australian passport you may be required to obtain a transit visa. Some flight routes make a stop in New Zealand and you may be required to obtain a transit visa to board your flight. It is the passengers' sole responsibility to seek advice on the correct visa and take appropriate action to ensure they have the correct visa prior to departure. Failure to do so may result in denied boarding and or refusal of entry to the country by the local authorities and immigration department. We strongly advise you to carefully review your flight tickets and then contact your respective consulate or a visa agency to confirm the necessary visa regulations and

acceptable forms of personal identification for your transit.

Important:

- *Please start arranging your visa three weeks before departure to account for any delays due to consulate operating hours.*
- *Visa rules are subject to change. Please check with the nearest embassy, consulate or immigration department of the destination/s you are visiting once you receive your travel documentation to ensure you have the most up to date information.*
- *It is your responsibility to be travel-ready and ensure that you are aware and comply with any destination or travel requirements, including the validity of all required travel documents.*
- *Passengers who are not Australian citizens must also check with the respective consulate or visa agency to determine what their visa requirements are and what personal identification is required.*
- *It is also important to note that some areas of employment, such as journalism, government authorities and charity organisations, may have additional restrictions in applying for visas. This may, in turn, affect the type of application required.*

Travel Insurance

Embarking on your next trip is exciting, and while you hope the unexpected does not happen, it is best to be prepared. We strongly recommend you take out travel insurance when making your booking. Whether it's a potential medical emergency, a flight cancellation, a delayed suitcase, or an unforeseen event, it's important to ensure you're adequately protected. For more information or advice visit <https://www.tripadeal.com.au/travel-insurance>

Schedule Of Fees

Voluntary Changes

This includes booking changes requested by you, including but not limited to those changes requiring an airline ticket or a

Purchase Confirmation reissue.

- Changes - \$100 per booking and any additional charges applied by the airline/cruise company/accommodation/other travel providers.

Name Changes Due To Passenger Error

If the incorrect name has been provided, charges of \$100 per booking and any additional charges applied by the airline/cruise company/accommodation/other travel providers.

Supplier Fees

In the event the tour package you have purchased is unable to proceed, and/or a Travel Supplier is unable to fulfil the tour due to external circumstances (Limitation of Liability e.g. a Force Majeure event), there may be a fee or amount of money that is withheld by our Suppliers and is unrecoverable. This may be due to non-refundable airline tickets, cancellation penalties with cruise cabins or unrecoverable payments with our land/accommodation partners. If refunds are not available from Suppliers, we will endeavour to obtain a travel credit on the best terms available and communicate these outcomes to you. In the event we are unable to obtain a refund or travel service credit, or part thereof, this cost is passed on to the customer as a Supplier Fee.