



# Machu Picchu & Antarctica Expedition

CUSCO ● LIMA ● LAKE TITICACA ● ANTARCTICA

## The Offer

Embark on an epic journey that spans two worlds, tracing the ancient peaks of the Andes to the icy shores of Antarctica.

Arrive in Lima, Peru, for a city tour of the Plaza de Armas, Convent of San Francisco and more. Fly to Cusco, where you'll discover Inca sacred sites such as Koricancha and Tambomachay. Head to the Sacred Valley before witnessing breathtaking views of the Andes onboard the Peru Expedition Train to Aguas Calientes. Pass through the gates into the Machu Picchu archaeological site for a guided tour of the House of the Guardian, Intihuatana and more. From Puno, boat over Lake Titicaca to Uros and Taquile Island to meet with a local family and learn about one of the oldest cultures in the Americas.

Travel to Argentina, where the adventure continues with a flight from Buenos Aires to Ushuaia, where you'll board a HX Expeditions ship. Indulge with all-inclusive meals, comfortable cabins, elegant lounges and more. Cross the famed Drake Passage before enjoying five days of otherworldly landscapes, wildlife spotting and Zodiac landings in Antarctica. Enrich your experience with optional activities such as camping, kayaking and more (additional

charges). Back in Buenos Aires, take part in a fascinating city tour before a three-course dinner with performances by tango orchestras.

Channel your inner explorer with all flights, a 10-night all-inclusive cruise, 15 nights of accommodation, 45 meals plus more.

**Want more? Choose Itinerary 2 to spend two unforgettable nights in the Amazon Rainforest at Posada Amazonas Lodge.**

Offer available for a limited time or until sold out. TRIP A DEAL PTY LTD: 50149240433

Updated: 20 May 2026 13:43:46

Have a question about this deal? We're here to help.  
Call our friendly team on 1300 158 912

1

FREQUENT  
FLYER 

 Trip  
a Deal



## 28-DAY CRUISE & TOUR PACKAGE | MACHU PICCHU & ANTARCTICA EXPEDITION

# The Itinerary

## Itinerary 1

### Day 1 Australia (or New Zealand) - Lima, Peru

Today, you'll depart from Australia (or New Zealand) to Lima, Peru. Upon arrival in Lima, you'll be welcomed by a tour representative and transferred to the hotel.

Lima is a huge and fascinating city where world-famous restaurants sit alongside ancient archaeological sites. Known as The City of Kings, the Peruvian capital is packed with stunning colonial architecture, huge religious buildings, government seat and other important structures.

#### Please note:

- Due to flight scheduling and availability, some departures may occur on Day 0. Affected customers must be at the airport the day before. Flight times will be indicated on your final documentation which you will receive prior to departure.
- For those departing from Perth, you may depart on Day -1 (two days earlier). Flight times will be indicated on your final documentation, which you will receive prior to departure.
- Some customers may experience an extended layover. Lounge passes may be purchased at your own expense.

**Overnight:** Jose Antonio Lima Hotel or similar

**Meals included:** In-Flight

### Day 2 Lima City Tour

This morning, after breakfast, you'll set off on a city tour of Lima.

Start with a brief stop at the Huaca Pucllana Archaeological Site, an ancient pre-Inca ceremonial centre, before continuing to Lima's UNESCO World Heritage-listed historic centre. Here, you'll explore the Plaza de Armas, the heart of the city which is

surrounded by grand colonial and Republican-era buildings. Iconic landmarks border the square including the Government Palace, Lima Cathedral, Archbishop's Palace, Municipal Palace and the Palace of the Union.

From the square, walk to the Convent of San Francisco, one of Peru's most important religious sites. Founded in the 1530s and completed in 1766, this remarkable complex has withstood centuries of earthquakes. Inside, its historic library preserves over 25,000 rare volumes in Spanish, English and Quechua. The convent is built around a tranquil courtyard planted with mango and lucuma trees, while its walls feature striking murals of St Francis of Assisi. Among the highlights are a golden Baroque altarpiece and Diego de la Puente's famous 1696 painting of The Last Supper.

Descend into the eerie San Francisco Catacombs, Lima's largest. Once a burial site for more than 25,000 people, the catacombs were in use until 1808 and rediscovered in 1947. Today, they fascinate visitors with their intriguing arrangements of bones in geometric patterns.

Afterwards, return to the hotel where you can enjoy the remainder of the day at leisure.

**Overnight:** Jose Antonio Lima Hotel or similar

**Meals included:** Breakfast

### Day 3 Lima - Cusco

Today, at the appropriate time, you will be transferred to the airport in preparation for your flight to Cusco. Upon arrival, you'll be met and transferred to the hotel.



## 28-DAY CRUISE & TOUR PACKAGE | MACHU PICCHU & ANTARCTICA EXPEDITION

# The Itinerary

## Itinerary 1

The rest of the day is then yours to enjoy at leisure. Take the chance to wander through the city's vibrant centre where Inca foundations blend with colonial architecture and European influences. From lively plazas to cobblestone streets steeped in history, Cusco offers a unique atmosphere that reflects the meeting of indigenous and Spanish cultures. Set high in the Peruvian Andes at 3,399 metres above sea level, Cusco is a city like no other.

**Overnight: Costa del Sol Wyndham Cusco or similar**

**Meals included: Breakfast**

### Day 4 Cusco Half-Day City Tour

Today, you will embark on a half-day tour of Cusco.

Visit the wonderful Koricancha, located next to the Church of Santo Domingo. According to chroniclers, the Koricancha was the most sacred and important temple of the Inca Empire during the period immediately after the Spanish conquest. Continue to the Cathedral of Cusco in the Plaza de Armas (Main Square), built between 1560 and 1654 on the foundations of an existing Inca temple. This spectacular cathedral houses many works of art from the Cusco school of painters while its high altar and pulpit are covered in gold and silver reliefs. The next stop is the imposing Inca fortress of Sacsayhuaman (3700m asl), which stands on a hill above Cusco. Explore the Qenqo Archaeological Complex before heading to Tambomachay.

After a morning of exploring, you'll have the remainder of the day at your own leisure. Why not stop by the Inka Museum (charges apply) or at the San Pedro market to view local produce?

*Please note: Cusco is located in the Peruvian Andes at 3,399 metres above sea level, high altitude environments are classified as above 2500 metres above sea level. Please consult a medical professional if you have any concerns or to find out what preventative measures are available. Please refer to the 'Other important information' section for further information.*

**Overnight: Costa del Sol Wyndham Cusco or similar**

**Meals included: Breakfast**

### Day 5 Sacred Valley of the Incas

After breakfast, you'll journey into the Sacred Valley of the Incas. Passing the impressive ruins of Saqsaywaman, you'll cross the mountains before descending 450 metres to the fertile valley floor where the Urubamba River winds its way past picturesque villages.

The first stop is Pisac where you'll have time to browse colourful stalls filled with local handicrafts, textiles and souvenirs. Continue to the Pisac ruins to explore terraces, temples, tunnels and ceremonial altars on a guided tour.

Stop for lunch in Urubamba before driving on to Ollantaytambo, one of the most important Inca sites. Once the royal estate of Emperor Pachacuti, Ollantaytambo is both a living town and an archaeological wonder. Explore the Temple of the Sun, admire the colossal stone blocks and learn about the Inca's advanced agricultural terraces.

In the late afternoon, you'll be transferred to the hotel in Urubamba where you can enjoy the evening at leisure.



## 28-DAY CRUISE & TOUR PACKAGE | MACHU PICCHU & ANTARCTICA EXPEDITION

# The Itinerary

## Itinerary 1

*Please note: You will need to prepare a smaller backpack (maximum 8 kilograms) to take with you to Aguas Calientes as luggage cannot be taken on the train. Your larger suitcases will be transferred to the hotel in Cusco for your return.*

**Overnight: San Agustin Monasterio de la Recoleta or similar**  
**Meals included: Breakfast; Lunch**

### Day 6 Peru Expedition Train - Aguas Calientes

Following breakfast, head to the Ollantaytambo train station to embark on the PeruRail Expedition train bound for Aguas Calientes. As the train winds its way along the Urubamba River, you'll be treated to breathtaking views of the Sacred Valley with steep mountains rising dramatically on either side.

Nestled at the base of the mountains leading to Machu Picchu, Aguas Calientes blends traditional Andean life with a vibrant tourist scene. The largely pedestrianised town is filled with colourful markets, souvenir shops, cafés and restaurants. The town is also famous for its natural hot springs, where you'll have time to unwind in the steaming pools after your journey (at own expense).

For those wishing to experience a portion of the Inca Trail trek, you can join a supplementary tour of the Express Inca Trail (additional fees apply).

Optional Activity: Express Inca Trail Trek

Duration: Full Day

Fitness Level Required: Active/Demanding

In the morning, you'll be transferred from the hotel to board a 1.5-hour scenic train to Kilometre 104, the start of your Inca Trail Trek (timing depends on train scheduling). From here, hike approximately 4 hours to the Inca site of Wiñay Wayna ("Forever Young") which is approximately 2,680 metres above sea level. Built on a steep hillside overlooking the Urubamba River, this archaeological site has a series of 10 baths and numerous Inca buildings displaying high levels of Inca masonry. Afterwards, continue to Inti Punku (the Puerta del Sol) for the first spectacular view of Machu Picchu. Please see current pricing in Important Information.

*Please note:*

- *The Express Inca Trail Trek tour requires a moderate to high level of fitness. Participants will encounter uneven surfaces, steep inclines, numerous steps and trekking at high altitudes.*
- *Prior to undertaking this optional excursion, it's recommended to consult your GP to assess your suitability for the tour.*

*Please note: Express Inca Trail Trek tickets are non-refundable and non-transferable. Once purchased, this optional activity cannot be refunded.*

**Overnight: Hatun Inti Boutique or similar**  
**Meals included: Breakfast**

### Day 7 Machu Picchu

Today has an early start as, at approximately 05:40, you will be picked up to bus to the citadel of Machu Picchu.



## 28-DAY CRUISE & TOUR PACKAGE | MACHU PICCHU & ANTARCTICA EXPEDITION

### The Itinerary

#### Itinerary 1

Pass through the gates into the Machu Picchu archaeological site. Here, you'll be guided on a 2-hour tour of this complex's most famous and spectacular parts. These include the House of the Guardian, Intihuatana, Temple of the Sun, Sacred Plaza and other key locations. As you walk around, you'll enjoy spectacular views across the agricultural terraces of Machu Picchu and across the surrounding mountains and plunging gorges.

Once you've finished the tour of Machu Picchu, take the bus back down to Aguas Calientes where you can relax and enjoy lunch (not included). You'll then board the train back to Poroy and travel by road to Cusco. Upon arrival at the station, a tour representative will wait for you to take you back to the hotel in Cusco, arriving around 19:00.

**Please note: You will have time for breakfast before being picked up this morning.**

**Overnight: Costa del Sol Wyndham Cusco or similar**

**Meals included: Breakfast**

#### Day 8 Cusco Free Day

Today, you'll have your last full day in Peru! The day is yours at leisure to do some last shopping or sightseeing. Alternatively, you can choose to participate in an optional tour.

Optional Activity: Folklore Dinner & Show

At 19:00, make your way to a restaurant near Cusco's central Plaza de Armas for an unforgettable evening. Indulge in a fabulous buffet dinner featuring a wide selection of traditional dishes including meats, fish, vegetables and exquisite desserts. As you dine, the evening comes alive with a vibrant traditional dance

show. Immerse yourself in the rich culture of the Andes with folk and classical music performed on traditional instruments like the quena, charango, flute and

zampoña. For an even more memorable experience, you're welcome to join the dancers on the floor and become part of the celebration. Please see the current pricing in the Important Information section.

Optional Activity: Maras & Moray

Take a captivating half-day tour after being picked up from your hotel at approximately 09:00. The journey to Moray takes about 1.5 hours, offering breathtaking views of the Andean landscape along the way. Pass golden wheat fields, charming traditional villages and majestic snow-capped mountains. Upon arrival at Moray, explore its fascinating amphitheatre-like terraced structures. These circular terraces, believed to have been an agricultural laboratory for the Incas, showcase their innovative techniques for optimising crop growth. You'll then visit Maras to marvel at the ancient salt evaporation ponds carved into the mountainside. More than 3,000 pools collect salty spring water that evaporates to leave behind the renowned sal de Maras, a prized pink salt still harvested today. Please see current pricing in Important Information.

Optional Activity: Andean Cooking Class

Begin your experience with a 09:30 pickup from your hotel, heading to the San Pedro Market in Cusco. Known as one of the city's most fascinating markets, it bursts with colourful stalls offering fresh produce, meats, spices, handicrafts and souvenirs. Before entering, you'll meet your chef guide who will explain the



## 28-DAY CRUISE & TOUR PACKAGE | MACHU PICCHU & ANTARCTICA EXPEDITION

# The Itinerary

## Itinerary 1

flow of the tour. Together, you'll wander through the market, learning about local ingredients, shopping tips and Andean food traditions. Along the way, you'll help select the fresh produce that will be used later in your cooking class. Afterwards, head to a local restaurant to prepare a traditional Peruvian dish. The group will then set the table and share the delicious dishes together. Please see current pricing in Important Information.

### Optional Activity: Rainbow Mountain Trek

Set off before sunrise on an unforgettable full-day adventure to Rainbow Mountain (Vinicunca). Your day begins with a 05:00 hotel pick-up from Cusco, followed by an approximately 3-hour scenic drive through the South Valley, where you'll enjoy breathtaking Andean landscapes and a delicious breakfast en route. Starting your hike in the small town of Pitumarca (3,310 metres), you'll follow a gentle path beside a tranquil stream with views of Mount Ausangate. After about 1.5 hours of hiking, you'll reach Rainbow Mountain, standing at an impressive 5,100 metres. Marvel at the vibrant mineral layers that create the mountain's iconic striped appearance and enjoy approximately 30 minutes at the summit to take in the panoramic views and snap photos. The return hike is approximately 1-hour, followed by a hearty buffet lunch at a local restaurant. Afterwards, sit back and relax during the 3-hour drive back to Cusco, arriving around 16:00. Please see current pricing in Important Information.

*Please note:*

- *The Rainbow Mountain Trek tour requires a moderate to high level of fitness. Participants will encounter uneven surfaces, steep inclines, numerous steps and trekking at high altitudes. Prior to undertaking this optional excursion, it's recommended to consult your GP to assess your suitability for the tour.*
- *Only one of the above activities can be chosen for today as the timings coincide with each other.*

**Overnight: Costa del Sol Wyndham Cusco or similar**

**Meals included: Breakfast**

### **Day 9 Cusco - Puno**

The day begins early with a 05:00 hotel pick-up, transferring to the bus station for a 07:00 departure towards Puno. This scenic journey through the Andes is not just a transfer, it's an experience in itself with fascinating stops along the way.

The first visit is to the Chapel of Andahuaylillas, a 17th-century church known for its exquisite murals, intricate gold-leaf work and masterpieces of the Cusco School. Continue to the Raqchi Archaeological Complex, home to the remarkable Temple of Wiracocha, the supreme Inca deity. Here you'll explore the site's impressive stone and adobe structures, including one of the largest collections of Inca storehouses (colcas).

You'll then stop for buffet lunch at a local restaurant. This is your chance to sample a wide selection of national and regional dishes, fresh vegetables, local desserts and traditional hot drinks such as coca tea.



## 28-DAY CRUISE & TOUR PACKAGE | MACHU PICCHU & ANTARCTICA EXPEDITION

### The Itinerary

#### Itinerary 1

Recharged, journey onwards to La Raya Pass (4,335 metres above sea level), the highest point on the route and the natural border between Cusco and Puno. From here, admire the snow-capped Chimboya Mountain, birthplace of the Amazon River. The final stop is the Pukara Lithic Museum, showcasing ceramics and stone sculptures from the ancient Pukara culture (1600 BC–400 AD).

Afterwards, settle back for the last stretch of the journey before arriving in the lakeside city of Puno (3,830 metres above sea level) around 17:00.

#### Optional Train Upgrade: Cusco - Puno

An optional train upgrade is available as an alternative to travelling by bus.

Trade the highway for a front-row seat to the Andes on this iconic full-day rail journey from Cusco to the mystical Lake Titicaca. Departing at 07:50 and arriving in Puno at 18:08, you will traverse the expansive altiplano while being immersed in vibrant local culture through traditional music and dance performances that bring the Andean spirit to life right in your carriage. This scenic route offers a perfect blend of comfort and culture, featuring an onboard lunch, snacks, and a relaxing afternoon tea as the breathtaking highlands glide by. A standout moment of the trip is the stop at Abra La Raya, the highest point of the route at 4,300 meters above sea level, providing an awe-inspiring photo opportunity where the mountains meet the sky. Your upgrade includes private transfers from your Cusco hotel to the station and a dedicated professional driver waiting to meet you upon arrival in Puno for a transfer to your Puno hotel. Please

note, this optional upgrade is only available for departures where this travel day falls on a Wednesday, Friday, or Sunday (where Day 1 departure date is a Tuesday, Thursday, or Saturday). Please see current pricing in Important Information.

**Overnight: Jose Antonio Puno or similar**

**Meals included: Breakfast; Lunch**

#### **Day 10 Lake Titicaca (Uros & Taquile Islands)**

This morning, transfer to Puno's main port where you'll board a modern motorboat with panoramic windows and an expert guide. The 30-minute boat ride offers stunning views of Lake Titicaca's sparkling waters, surrounding mountains and diverse flora and fauna.

Uncover the unique lifestyle of the Uros people, descendants of one of the oldest cultures in the Americas. Living on islands made of totora reeds, they continue traditional activities such as fishing and crafting.

You'll then journey to Taquile Island, renowned for its scenic beauty and welcoming locals. Enjoy a cultural welcome with music, dance and presentations of traditional life. Take a guided walk across the island's breathtaking landscapes, offering panoramic views of Lake Titicaca and the snow-capped Andes of Bolivia. Visit a local family's home to witness their daily life and learn about their intricate textile craftsmanship.

Lunch is served at a typical island restaurant before you'll have time to relax on the lakeshore.

Later, return by motorboat to Puno and the hotel where you can enjoy the remainder of the day at leisure.



## 28-DAY CRUISE & TOUR PACKAGE | MACHU PICCHU & ANTARCTICA EXPEDITION

# The Itinerary

### Itinerary 1

**Overnight:** Jose Antonio Puno or similar

**Meals included:** Breakfast; Lunch

#### Day 11 Puno - Lima

Today, at the appropriate time, you'll be transferred to the airport for your onward flight to Lima. Once arrived in Lima, make your own way to the airport hotel for an evening of rest before the adventure continues the following day.

**Overnight:** Costa del Sol Wyndham Lima Aeropuerto or similar

**Meals included:** Breakfast

#### Day 12 Lima, Peru - Buenos Aires, Argentina

Today, at the appropriate time, make your own way to the international airport for your flight to Buenos Aires, Argentina. Once arrived in Argentina, you'll be met by a tour representative and transferred to the hotel.

*Please note: HX Expeditions requires all guests to complete a Medical Screening Form for certain remote destinations, including Antarctica. This form is divided into two sections: Section A (completed by you) and Section B (completed by your doctor). The forms must be submitted for review 4-8 weeks prior to departure. If the required information is missing, you may need to resubmit. Failure to complete the forms may result in being unable to board the cruise. Please refer to the Other Important Information section for a suggested packing list for your Antarctica voyage.*

**Overnight:** Hotel NH Buenos Aires Tango or similar

**Meals included:** Breakfast

#### Day 13 Buenos Aires - Ushuaia - Board HX Expeditions Ship

This morning, you'll be transferred from the hotel to the airport for your early flight to Ushuaia. Here, a hybrid-powered, state-of-the-art HX Expedition ship awaits. Ushuaia, often competing with Chile's Puerto Williams for the title of the southernmost city in the world, is set against the stunning Martial Glacier and is known as the 'end of the world'.

Upon arrival, you'll attend a mandatory health and safety briefing before enjoying a welcome dinner hosted by the Expedition Team. Afterwards, take some time to explore the ship, which will be your home for the next eleven days.

*Please note: Two different expedition ships are used during the Antarctic season. For specific details about which ship operates on your departure date, refer to the Cruise section in the Important Information.*

**Overnight:** MS Fridtjof Nansen or MS Roald Amundsen

**Meals included:** Breakfast; Dinner

#### Day 14 Drake Passage

Today, the ship will cross the infamous Drake Passage, named after English sea captain Sir Francis Drake who stumbled upon it in 1578. With no landmass at this latitude, the waters can be turbulent. However, don't worry as HX's ultra-modern expedition ships easily handle the "Drake Shake."

The two-day journey across the 1000 kilometre-wide passage gives you time to prepare for your Antarctic adventure.



## 28-DAY CRUISE & TOUR PACKAGE | MACHU PICCHU & ANTARCTICA EXPEDITION

# The Itinerary

### Itinerary 1

The Expedition Team will begin their lecture series in the onboard Science Centre, sharing their extensive experience and teaching you how to make your visit safe and sustainable. You'll also learn how to comply with IAATO guidelines, including wearing sterilised rubber boots when ashore and vacuuming your clothing to remove foreign contaminants. During this time, you can participate in exciting "Citizen Science" projects like whale counting, cloud observation and sample collection.

Take advantage of the other amenities by working out in the gym, relaxing in the Wellness Area or enjoying meals at any of the three exquisite restaurants. Don't forget to head out on deck to look for the first icebergs and spot wildlife like whales, dolphins and seabirds.

**Overnight: MS Fridtjof Nansen or MS Roald Amundsen**  
**Meals included: Breakfast; Lunch; Dinner**

#### Day 15 Drake Passage

Today, you'll continue your journey across the legendary Drake Passage. Take this opportunity to unwind and immerse yourself in the onboard experiences. With each passing hour, the excitement builds as you draw closer to the icy wonderland of Antarctica, which you'll arrive at the following day.

**Overnight: MS Fridtjof Nansen or MS Roald Amundsen**  
**Meals included: Breakfast; Lunch; Dinner**

#### Day 16 Antarctica

Land ho! Welcome to the icy wonderland of Antarctica. For the next five days, you'll be surrounded by vast icy waters, towering glaciers and colossal icebergs that seem to stretch into infinity. The sheer scale and beauty of the landscapes are almost otherworldly. The silence of this frozen world is often interrupted by the excited shouts of fellow passengers as penguins, seals and whales make their appearances.

Antarctica's landscape and wildlife are constantly evolving with the seasons. During the late spring months of October and November, the snow-covered terrain appears even more pristine, providing the perfect backdrop for penguins as they court and build their nests. By December and January, the arrival of more whales marks the height of summer, coinciding with the hatching of penguin chicks. February and March offer the ultimate whale-watching experience when large pods are drawn to the rich feeding grounds of krill in Antarctic waters.

Once you arrive, the Expedition Team will take every opportunity to explore the environment with you. Whether you're cruising through the ice or taking Zodiac landings, you'll get up close and personal with this frozen paradise. Spotting penguins from the ship is exhilarating, but the experience becomes even more awe-inspiring when you're on land, surrounded by these charming creatures. As you cruise in smaller explorer boats or take part in optional kayaking excursions, you may even encounter seals or whales right next to you. Be sure to keep your camera ready at all times to capture these unforgettable moments.



## 28-DAY CRUISE & TOUR PACKAGE | MACHU PICCHU & ANTARCTICA EXPEDITION

# The Itinerary

## Itinerary 1

To enrich your journey, the Expedition Team will share their expertise on a variety of fascinating topics, including the history of Antarctica and the intriguing science of glaciology. Every day will bring new discoveries and unforgettable experiences as you explore this awe-inspiring continent.

**Overnight:** MS Fridtjof Nansen or MS Roald Amundsen  
**Meals included:** Breakfast; Lunch; Dinner

### Day 17 Antarctica

Be sure to speak with your Expedition Team onboard to book optional excursions for your time in Antarctica.

#### Optional Activity: Antarctica Camping

Duration: 10 hours

In the true style of the early explorers, venture out at night for a once-in-a-lifetime experience as you go camping in the Antarctic night. This activity features top-of-the-line camping equipment that meets Antarctic standards for camping on snow and ice. Imagine yourself sleeping under the Antarctic sky with little more than the thin wall of a tent separating you from the elements. The adventure starts with a pre-camp briefing by the expedition staff who accompany you on the activity. They set up your camp after dinner, with guests participating from beginning to end. If you have never pitched a tent before, this is your chance. After the camp is set up, you can either go to bed or sit outside and marvel at the stillness. Depending on the landing site, you may take short walks to nearby viewpoints and visit penguin colonies on the bright Antarctic night. If you like, wake up early, climb out of your tent and watch the sunrise. In the morning hours, take

down the camp, and the boats pick you up for the return trip to the ship. Back on board, enjoy a special breakfast and debrief the experience.

#### *Please note:*

- *This activity may have limited availability. If space becomes limited, participants will be chosen via a lottery-based lucky draw.*
- *As an IAATO member, HX adheres to all guidelines associated with onshore overnight stays in Antarctica. They leave nothing behind and remove all traces of their presence to protect wildlife and the fragile environment.*

#### Optional Activity: Antarctica Snowshoeing

Duration: 2 hours

Feel the spirit of the early Antarctic explorers. Join them for a walk on the wild side with snowshoes. Climb hills, cross glittering white plains and step on untouched landscape. The experienced Expedition Team will guide you to places with awe-inspiring views. You might even observe penguin colonies or even see whales swimming in the sea from above.

#### Optional Activity: Antarctica Kayaking

Duration: 3 hours

Merge with nature on an exceptional Antarctic sea kayaking adventure, getting up close to awe-inspiring icebergs and glaciers. Paddling through crystal-clear water you might spot seals, penguins and even whales. The experienced Expedition Team will take you to stunning Antarctic areas with high chances of encountering wildlife.



## 28-DAY CRUISE & TOUR PACKAGE | MACHU PICCHU & ANTARCTICA EXPEDITION

### The Itinerary

#### Itinerary 1

**Overnight:** MS Fridtjof Nansen or MS Roald Amundsen  
**Meals included:** Breakfast; Lunch; Dinner

#### Day 18 Antarctica

**Overnight:** MS Fridtjof Nansen or MS Roald Amundsen  
**Meals included:** Breakfast; Lunch; Dinner

#### Day 19 Antarctica

**Overnight:** MS Fridtjof Nansen or MS Roald Amundsen  
**Meals included:** Breakfast; Lunch; Dinner

#### Day 20 Antarctica

**Overnight:** MS Fridtjof Nansen or MS Roald Amundsen  
**Meals included:** Breakfast; Lunch; Dinner

#### Day 21 Drake Passage

After having delved into the remote and wild continent of Antarctica, it will be time to set sail homeward bound. Crossing back over the Drake Passage, the Expedition Team will recount the journey's many experiences at the Science Centre.

**Overnight:** MS Fridtjof Nansen or MS Roald Amundsen  
**Meals included:** Breakfast; Lunch; Dinner

#### Day 22 Drake Passage

**Overnight:** MS Fridtjof Nansen or MS Roald Amundsen  
**Meals included:** Breakfast; Lunch; Dinner

#### Day 23 Disembark Cruise - Ushuaia - Buenos Aires

Today marks the final day of your unforgettable Antarctic adventure as the ship returns to Ushuaia. Having ventured to the bottom of the world, you've explored the remote and extraordinary Seventh Continent.

Upon arrival in Ushuaia, you'll disembark and transfer to the airport for your flight back to Buenos Aires. Once arrived, be transferred to the hotel where you can enjoy the remainder of the day at leisure.

**Overnight:** Hotel NH Buenos Aires Tango or similar  
**Meals included:** Breakfast

#### Day 24 Buenos Aires City Tour & Tango Show

This morning, after breakfast, embark on a city tour of Buenos Aires to discover the charm and magic of this vibrant metropolis. Begin at Plaza de Mayo, a key site in Argentina's political history that's surrounded by iconic buildings. Here, you'll learn about the area's significance before heading to San Telmo, one of the city's oldest neighbourhoods.

Next, explore the colourful neighbourhood of La Boca, famous for its tango culture and vibrant Caminito Street. You'll also visit important landmarks such as La Casa Rosada (the Presidential Palace, known as The Pink House), the Cabildo (the colonial town



## 28-DAY CRUISE & TOUR PACKAGE | MACHU PICCHU & ANTARCTICA EXPEDITION

### The Itinerary

#### Itinerary 1

hall) and the Neoclassical Metropolitan Cathedral. Finally, admire the celebrated Recoleta Cemetery, a true labyrinth of ornate mausoleums.

In the evening, you'll be picked up and transferred to Cafe de los Angelitos for a three-course dinner and unforgettable tango show. Cafe de Los Angelitos has been a living witness to over a century of Buenos Aires' history. Now, as a leading venue for tango in the city's most elegant setting, it preserves the luxury and distinction of a bygone era while writing the first chapter of its future. Enjoy performances by tango orchestras, folk music, dancers and singers.

After the show, you'll be transferred back to your hotel.

*Please note: The group on departure date 08 December 2026 will enjoy the tango show a day earlier due to New Years Eve.*

**Overnight:** Hotel NH Buenos Aires Tango or similar

**Meals included:** Breakfast; Dinner

#### Day 25 Buenos Aires Free Day

Enjoy a day at leisure in the beautiful Buenos Aires to perhaps wander through the artistic district of Palermo or partake in an optional activity.

Optional Activity: The Argentine Experience

Experience Argentina's culinary culture in a unique, interactive dinner unlike any typical dining or cooking class. Over a seven-course, 17-dish tasting menu, you'll explore traditional flavors, regional ingredients and Argentine storytelling. You'll also engage by folding your own empanadas, preparing chimichurri and

making yerba mate. Connect with fellow travellers as expert chefs guide you through the rich traditions of Argentine cuisine, paired with five exceptional wines. Please see current pricing in Important Information.

- *Welcome: Patagonian trout tartar & Pét-Nat sparkling wine*
- *Hands-On: Empanada folding and chimichurri preparation*
- *Memory on a Plate: Savory chard fritters and farinata chickpea flatbread*
- *Picada: Chorizo, black sausage and grilled skirt steak*
- *Beef Tasting: Tenderloin with mushroom butter, slow-braised Thor's Hammer and grilled seasonal vegetables*
- *Dessert Tasting: Dulce de leche pancakes, chocotorta and dulce de leche flan*
- *Mate Class: Learn to prepare yerba mate, paired with alfajores filled with dulce de leche*

**Overnight:** Hotel NH Buenos Aires Tango or similar

**Meals included:** Breakfast

#### Day 26 Buenos Aires, Argentina - Australia (or New Zealand)

Today, at the appropriate time, you'll be transferred to the airport in preparation for your return flight to Australia (or New Zealand).

**Meals included:** Breakfast

#### Day 27 In Transit

Sit back, relax and reminisce on the memories created over the past weeks on your trip through South America and Antarctica.

**Meals included:** In-Flight



## 28-DAY CRUISE & TOUR PACKAGE | MACHU PICCHU & ANTARCTICA EXPEDITION

### The Itinerary

#### Itinerary 1

##### Day 28 Arrive Australia (or New Zealand)

Once arrived in Australia (or New Zealand), make your own onward travel arrangements.

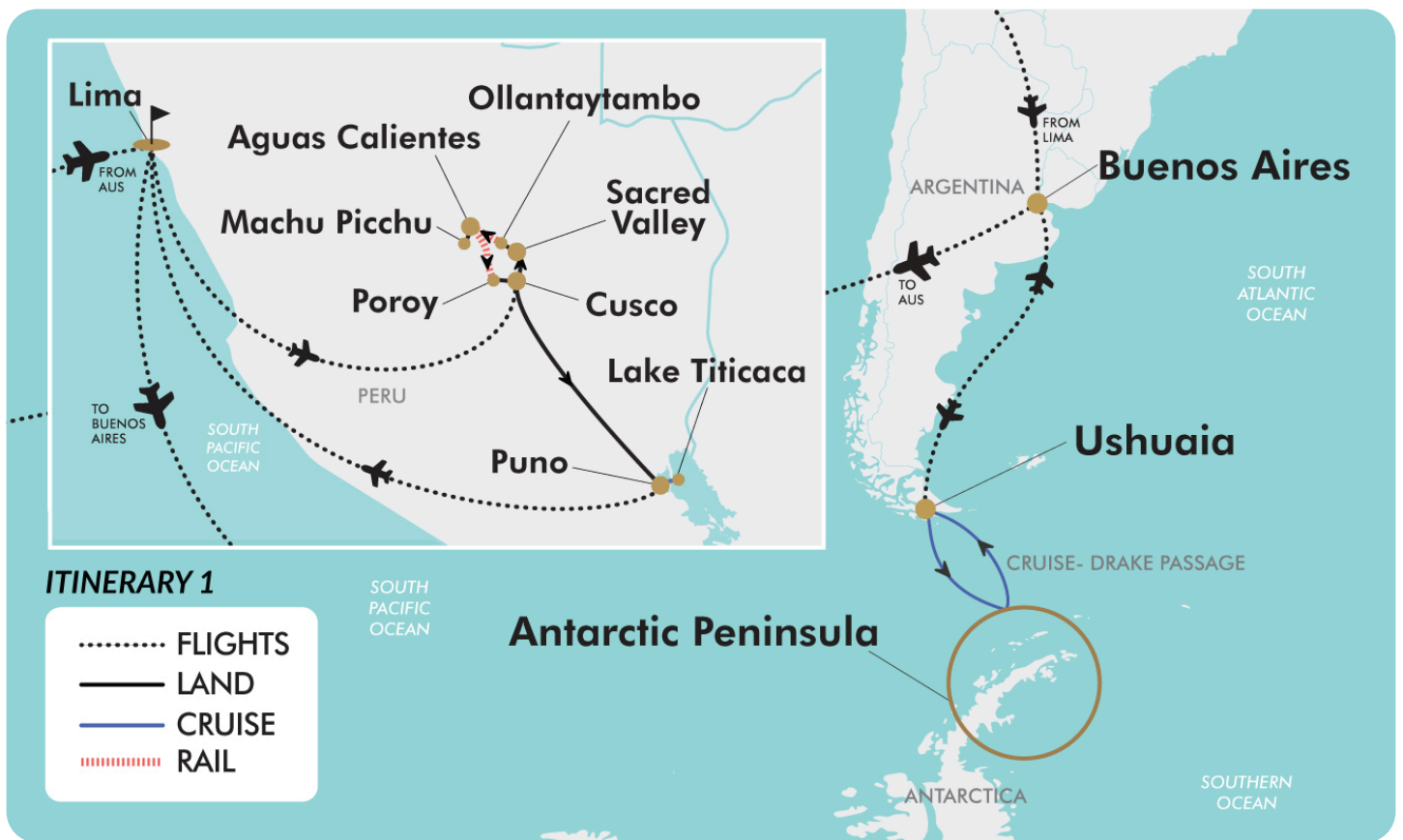
Meals included: None



## 28-DAY CRUISE & TOUR PACKAGE | MACHU PICCHU & ANTARCTICA EXPEDITION

### The Map

#### Itinerary 1





## 28-DAY CRUISE & TOUR PACKAGE | MACHU PICCHU & ANTARCTICA EXPEDITION

# The Itinerary

### Itinerary 2

#### Day 1 Australia (or New Zealand) - Lima, Peru

Today, you'll depart from Australia (or New Zealand) to Lima, Peru. Upon arrival in Lima, you'll be welcomed by a tour representative and transferred to the hotel.

Lima is a huge and fascinating city where world-famous restaurants sit alongside ancient archaeological sites. Known as The City of Kings, the Peruvian capital is packed with stunning colonial architecture, huge religious buildings, government seat and other important structures.

#### Please note:

- Due to flight scheduling and availability, some departures may occur on Day 0. Affected customers must be at the airport the day before. Flight times will be indicated on your final documentation which you will receive prior to departure.
- For those departing from Perth, you may depart on Day -1 (two days earlier). Flight times will be indicated on your final documentation, which you will receive prior to departure.
- Some customers may experience an extended layover. Lounge passes may be purchased at your own expense.

**Meals included: In-Flight**

#### Day 2 Lima City Tour

This morning, after breakfast, you'll set off on a city tour of Lima.

Start with a brief stop at the Huaca Pucllana Archaeological Site, an ancient pre-Inca ceremonial centre, before continuing to Lima's UNESCO World Heritage-listed historic centre. Here, you'll explore the Plaza de Armas, the heart of the city which is surrounded by grand colonial and Republican-era buildings. Iconic

landmarks border the square including the Government Palace, Lima Cathedral, Archbishop's Palace, Municipal Palace and the Palace of the Union.

From the square, walk to the Convent of San Francisco, one of Peru's most important religious sites. Founded in the 1530s and completed in 1766, this remarkable complex has withstood centuries of earthquakes. Inside, its historic library preserves over 25,000 rare volumes in Spanish, English and Quechua. The convent is built around a tranquil courtyard planted with mango and lucuma trees, while its walls feature striking murals of St Francis of Assisi. Among the highlights are a golden Baroque altarpiece and Diego de la Puente's famous 1696 painting of The Last Supper.

Descend into the eerie San Francisco Catacombs, Lima's largest. Once a burial site for more than 25,000 people, the catacombs were in use until 1808 and rediscovered in 1947. Today, they fascinate visitors with their intriguing arrangements of bones in geometric patterns.

Afterwards, return to the hotel where you can enjoy the remainder of the day at leisure.

**Meals included: Breakfast**





## 28-DAY CRUISE & TOUR PACKAGE | MACHU PICCHU & ANTARCTICA EXPEDITION

# The Itinerary

## Itinerary 2

### Day 3 Lima - Puerto Maldonado - Amazon Jungle

At the appropriate time, you'll be transferred to the airport for your flight to Puerto Maldonado, the gateway to the Amazon. On arrival, a tour representative will greet you and take you on a short drive to the Amazon Lodge offices. Here, you can safely store any large luggage you won't need during your stay, keeping the boats light and your journey more comfortable.

Continue to the Tambopata River Port where you'll board a boat for a scenic 45-minute ride along the Tambopata River. Surrounded by pristine rainforest, you'll arrive at Posada Amazonas, located within the community's primary forest reserve. Upon arrival, the lodge manager will welcome you and provide an orientation and safety briefing.

After lunch and settling into your lodge, you'll set out on a guided walk to a 35-metre canopy tower. From the top, take in sweeping views of the vast rainforest and winding Tambopata River while spotting toucans, parrots, macaws and other vibrant birdlife.

Back at the lodge, enjoy dinner followed by an insightful evening presentation on the Infierno ecotourism project, hosted by a local community member.

#### *Please note:*

- *All lodge activities are optional, allowing you to set your own pace. Activities and excursions may vary depending on weather and seasonal conditions.*

- *Due to luggage and space limitations on the boats, you may only bring a small bag with your essentials for your Amazon stay. It's highly recommended to prepare this bag in advance. Any additional luggage can be safely stored at the lodge's Puerto Maldonado office at no cost.*

**Overnight: Posada Amazonas Lodge or similar**  
**Meals included: Breakfast; Lunch; Dinner**

### Day 4 Parrot Clay Lick, Rainforest Trek & Native Community of Infierno

This morning begins with a short 20-minute walk from Posada Amazonas to a vibrant parrot clay lick. From a hide just 20 metres away, watch dozens of colourful parrots and parakeets gather on the riverbank to ingest the clay, rich in vital minerals. Species often seen here include southern mealy parrots, yellow-headed Amazons, blue-headed parrots and dusky-headed parakeets. The clay lick is especially active at dawn, late morning and mid-afternoon, offering excellent opportunities for observation.

Return to the lodge before setting out on a two-hour rainforest trek to encounter the largest tree in the area, the magnificent giant ceiba. Along the way, your guide will share insights into the natural history of the Amazon, highlighting the rainforest's unique plants and ecosystems.

After lunch back at the lodge, travel 30 minutes downriver to visit a local farm in the community of Infierno. Here, the owner cultivates a diverse range of Amazonian crops with each plant



## 28-DAY CRUISE & TOUR PACKAGE | MACHU PICCHU & ANTARCTICA EXPEDITION

# The Itinerary

### Itinerary 2

and tree serving a purpose. He'll share his knowledge of their uses and importance in daily life, offering a fascinating glimpse into Amazonian traditions.

Afterwards, return to the lodge for dinner.

**Overnight: Posada Amazonas Lodge or similar**

**Meals included: Breakfast; Lunch; Dinner**

#### Day 5 Amazon Jungle - Puerto Maldonado - Cusco

This morning, after breakfast, you'll be transferred by boat then vehicle to the airport for your flight to Cusco. Once arrived, you'll be met and transferred to the hotel.

The rest of the day is then yours to enjoy at leisure. Take the chance to wander through the city's vibrant centre where Inca foundations blend with colonial architecture and European influences. From lively plazas to cobblestone streets steeped in history, Cusco offers a unique atmosphere that reflects the meeting of indigenous and Spanish cultures. Set high in the Peruvian Andes at 3,399 metres above sea level, Cusco is a city like no other.

*Please note: Travellers following the standard itinerary will join the group at this stage, and the journey will continue together from here.*

**Meals included: Breakfast**

#### Day 6 Cusco Half-Day City Tour

Today, you will embark on a half-day tour of Cusco.

Visit the wonderful Koricancha, located next to the Church of Santo Domingo. According to chroniclers, the Koricancha was the most sacred and important temple of the Inca Empire during the period immediately after the Spanish conquest. Continue to the Cathedral of Cusco in the Plaza de Armas (Main Square), built between 1560 and 1654 on the foundations of an existing Inca temple. This spectacular cathedral houses many works of art from the Cusco school of painters while its high altar and pulpit are covered in gold and silver reliefs. The next stop is the imposing Inca fortress of Sacsayhuaman (3700m asl), which stands on a hill above Cusco. Explore the Qenqo Archaeological Complex before heading to Tambomachay.

After a morning of exploring, you'll have the remainder of the day at your own leisure. Why not stop by the Inka Museum (charges apply) or at the San Pedro market to view local produce?

*Please note: Cusco is located in the Peruvian Andes at 3,399 metres above sea level, high altitude environments are classified as above 2500 metres above sea level. Please consult a medical professional if you have any concerns or to find out what preventative measures are available. Please refer to the 'Other important information' section for further information.*

**Overnight: Costa del Sol Wyndham Cusco or similar**

**Meals included: Breakfast**



## 28-DAY CRUISE & TOUR PACKAGE | MACHU PICCHU & ANTARCTICA EXPEDITION

# The Itinerary

### Itinerary 2

#### Day 7 Sacred Valley of the Incas

After breakfast, you'll journey into the Sacred Valley of the Incas. Passing the impressive ruins of Saqsaywaman, you'll cross the mountains before descending 450 metres to the fertile valley floor where the Urubamba River winds its way past picturesque villages.

The first stop is Pisac where you'll have time to browse colourful stalls filled with local handicrafts, textiles and souvenirs. Continue to the Pisac ruins to explore terraces, temples, tunnels and ceremonial altars on a guided tour.

Stop for lunch in Urubamba before driving on to Ollantaytambo, one of the most important Inca sites. Once the royal estate of Emperor Pachacuti, Ollantaytambo is both a living town and an archaeological wonder. Explore the Temple of the Sun, admire the colossal stone blocks and learn about the Inca's advanced agricultural terraces.

In the late afternoon, you'll be transferred to the hotel in Urubamba where you can enjoy the evening at leisure.

*Please note: You will need to prepare a smaller backpack (maximum 8 kilograms) to take with you to Aguas Calientes as luggage cannot be taken on the train. Your larger suitcases will be transferred to the hotel in Cusco for your return.*

**Overnight:** San Agustin Monasterio de la Recoleta or similar  
**Meals included:** Breakfast; Lunch

#### Day 8 Peru Expedition Train - Aguas Calientes

Following breakfast, head to the Ollantaytambo train station to embark on the PeruRail Expedition train bound for Aguas Calientes. As the train winds its way along the Urubamba River, you'll be treated to breathtaking views of the Sacred Valley with steep mountains rising dramatically on either side.

Nestled at the base of the mountains leading to Machu Picchu, Aguas Calientes blends traditional Andean life with a vibrant tourist scene. The largely pedestrianised town is filled with colourful markets, souvenir shops, cafés and restaurants. The town is also famous for its natural hot springs, where you'll have time to unwind in the steaming pools after your journey (at own expense).

For those wishing to experience a portion of the Inca Trail trek, you can join a supplementary tour of the Express Inca Trail (additional fees apply).

Optional Activity: Express Inca Trail Trek

Duration: Full Day

Fitness Level Required: Active/Demanding

In the morning, you'll be transferred from the hotel to board a 1.5-hour scenic train to Kilometre 104, the start of your Inca Trail Trek (timing depends on train scheduling). From here, hike approximately 4 hours to the Inca site of Wiñay Wayna ("Forever Young") which is approximately 2,680 metres above sea level. Built on a steep hillside overlooking the Urubamba River, this archaeological site has a series of 10 baths and numerous Inca buildings displaying high levels of Inca masonry. Afterwards,



## 28-DAY CRUISE & TOUR PACKAGE | MACHU PICCHU & ANTARCTICA EXPEDITION

# The Itinerary

### Itinerary 2

continue to Inti Punku (the Puerta del Sol) for the first spectacular view of Machu Picchu. Please see current pricing in Important Information.

**Please note:**

- *The Express Inca Trail Trek tour requires a moderate to high level of fitness. Participants will encounter uneven surfaces, steep inclines, numerous steps and trekking at high altitudes.*
- *Prior to undertaking this optional excursion, it's recommended to consult your GP to assess your suitability for the tour.*

**Please note:** Express Inca Trail Trek tickets are non-refundable and non-transferable. Once purchased, this optional activity cannot be refunded.

**Overnight:** Hatun Inti Boutique or similar

**Meals included:** Breakfast

#### Day 9 Machu Picchu

Today has an early start as, at approximately 05:40, you will be picked up to bus to the citadel of Machu Picchu.

Pass through the gates into the Machu Picchu archaeological site. Here, you'll be guided on a 2-hour tour of this complex's most famous and spectacular parts. These include the House of the Guardian, Intihuatana, Temple of the Sun, Sacred Plaza and other key locations. As you walk around, you'll enjoy spectacular views across the agricultural terraces of Machu Picchu and across the surrounding mountains and plunging gorges.

Once you've finished the tour of Machu Picchu, take the bus back down to Aguas Calientes where you can relax and enjoy lunch (not included). You'll then board the train back to Poroy and travel by road to Cusco. Upon arrival at the station, a tour representative will wait for you to take you back to the hotel in Cusco, arriving around 19:00.

**Please note:** You will have time for breakfast before being picked up this morning.

**Overnight:** Costa del Sol Wyndham Cusco or similar

**Meals included:** Breakfast

#### Day 10 Cusco Free Day

Today, you'll have your last full day in Peru! The day is yours at leisure to do some last shopping or sightseeing. Alternatively, you can choose to participate in an optional tour.

#### Optional Activity: Folklore Dinner & Show

At 19:00, make your way to a restaurant near Cusco's central Plaza de Armas for an unforgettable evening. Indulge in a fabulous buffet dinner featuring a wide selection of traditional dishes including meats, fish, vegetables and exquisite desserts. As you dine, the evening comes alive with a vibrant traditional dance show. Immerse yourself in the rich culture of the Andes with folk and classical music performed on traditional instruments like the quena, charango, flute and

zampoña. For an even more memorable experience, you're welcome to join the dancers on the floor and become part of the celebration. Please see the current pricing in the Important Information section.



## 28-DAY CRUISE & TOUR PACKAGE | MACHU PICCHU & ANTARCTICA EXPEDITION

### The Itinerary

#### Itinerary 2

##### Optional Activity: Maras & Moray

Take a captivating half-day tour after being picked up from your hotel at approximately 09:00. The journey to Moray takes about 1.5 hours, offering breathtaking views of the Andean landscape along the way. Pass golden wheat fields, charming traditional villages and majestic snow-capped mountains. Upon arrival at Moray, explore its fascinating amphitheatre-like terraced structures. These circular terraces, believed to have been an agricultural laboratory for the Incas, showcase their innovative techniques for optimising crop growth. You'll then visit Maras to marvel at the ancient salt evaporation ponds carved into the mountainside. More than 3,000 pools collect salty spring water that evaporates to leave behind the renowned sal de Maras, a prized pink salt still harvested today. Please see current pricing in Important Information.

##### Optional Activity: Andean Cooking Class

Begin your experience with a 09:30 pickup from your hotel, heading to the San Pedro Market in Cusco. Known as one of the city's most fascinating markets, it bursts with colourful stalls offering fresh produce, meats, spices, handicrafts and souvenirs. Before entering, you'll meet your chef guide who will explain the flow of the tour. Together, you'll wander through the market, learning about local ingredients, shopping tips and Andean food traditions. Along the way, you'll help select the fresh produce that will be used later in your cooking class. Afterwards, head to a local restaurant to prepare a traditional Peruvian dish. The group will then set the table and share the delicious dishes together. Please see current pricing in Important Information.

##### Optional Activity: Rainbow Mountain Trek

Set off before sunrise on an unforgettable full-day adventure to Rainbow Mountain (Vinicunca). Your day begins with a 05:00 hotel pick-up from Cusco, followed by an approximately 3-hour scenic drive through the South Valley, where you'll enjoy breathtaking Andean landscapes and a delicious breakfast en route. Starting your hike in the small town of Pitumarca (3,310 metres), you'll follow a gentle path beside a tranquil stream with views of Mount Ausangate. After about 1.5 hours of hiking, you'll reach Rainbow Mountain, standing at an impressive 5,100 metres. Marvel at the vibrant mineral layers that create the mountain's iconic striped appearance and enjoy approximately 30 minutes at the summit to take in the panoramic views and snap photos. The return hike is approximately 1-hour, followed by a hearty buffet lunch at a local restaurant. Afterwards, sit back and relax during the 3-hour drive back to Cusco, arriving around 16:00. Please see current pricing in Important Information.

##### *Please note:*

- *The Rainbow Mountain Trek tour requires a moderate to high level of fitness. Participants will encounter uneven surfaces, steep inclines, numerous steps and trekking at high altitudes. Prior to undertaking this optional excursion, it's recommended to consult your GP to assess your suitability for the tour.*
- *Only one of the above activities can be chosen for today as the timings coincide with each other.*

**Overnight:** Costa del Sol Wyndham Cusco or similar  
**Meals included:** Breakfast



## 28-DAY CRUISE & TOUR PACKAGE | MACHU PICCHU & ANTARCTICA EXPEDITION

# The Itinerary

## Itinerary 2

### Day 11 Cusco - Puno

The day begins early with a 05:00 hotel pick-up, transferring to the bus station for a 07:00 departure towards Puno. This scenic journey through the Andes is not just a transfer, it's an experience in itself with fascinating stops along the way.

The first visit is to the Chapel of Andahuaylillas, a 17th-century church known for its exquisite murals, intricate gold-leaf work and masterpieces of the Cusco School. Continue to the Raqchi Archaeological Complex, home to the remarkable Temple of Wiracocha, the supreme Inca deity. Here you'll explore the site's impressive stone and adobe structures, including one of the largest collections of Inca storehouses (colcas).

You'll then stop for buffet lunch at a local restaurant. This is your chance to sample a wide selection of national and regional dishes, fresh vegetables, local desserts and traditional hot drinks such as coca tea.

Recharged, journey onwards to La Raya Pass (4,335 metres above sea level), the highest point on the route and the natural border between Cusco and Puno. From here, admire the snow-capped Chimboya Mountain, birthplace of the Amazon River. The final stop is the Pukara Lithic Museum, showcasing ceramics and stone sculptures from the ancient Pukara culture (1600 BC–400 AD).

Afterwards, settle back for the last stretch of the journey before arriving in the lakeside city of Puno (3,830 metres above sea level) around 17:00.

Optional Train Upgrade: Cusco - Puno

An optional train upgrade is available as an alternative to travelling by bus.

Trade the highway for a front-row seat to the Andes on this iconic full-day rail journey from Cusco to the mystical Lake Titicaca. Departing at 07:50 and arriving in Puno at 18:08, you will traverse the expansive altiplano while being immersed in vibrant local culture through traditional music and dance performances that bring the Andean spirit to life right in your carriage. This scenic route offers a perfect blend of comfort and culture, featuring an onboard lunch, snacks, and a relaxing afternoon tea as the breathtaking highlands glide by. A standout moment of the trip is the stop at Abra La Raya, the highest point of the route at 4,300 meters above sea level, providing an awe-inspiring photo opportunity where the mountains meet the sky. Your upgrade includes private transfers from your Cusco hotel to the station and a dedicated professional driver waiting to meet you upon arrival in Puno for a transfer to your Puno hotel. Please note, this optional upgrade is only available for departures where this travel day falls on a Wednesday, Friday, or Sunday (where Day 1 departure date is a Sunday, Tuesday, or Thursday). Please see current pricing in Important Information.

**Overnight: Jose Antonio Puno or similar**

**Meals included: Breakfast; Lunch**



## 28-DAY CRUISE & TOUR PACKAGE | MACHU PICCHU & ANTARCTICA EXPEDITION

# The Itinerary

## Itinerary 2

### Day 12 Lake Titicaca (Uros & Taquille Islands)

This morning, transfer to Puno's main port where you'll board a modern motorboat with panoramic windows and an expert guide. The 30-minute boat ride offers stunning views of Lake Titicaca's sparkling waters, surrounding mountains and diverse flora and fauna.

Uncover the unique lifestyle of the Uros people, descendants of one of the oldest cultures in the Americas. Living on islands made of totora reeds, they continue traditional activities such as fishing and crafting.

You'll then journey to Taquile Island, renowned for its scenic beauty and welcoming locals. Enjoy a cultural welcome with music, dance and presentations of traditional life. Take a guided walk across the island's breathtaking landscapes, offering panoramic views of Lake Titicaca and the snow-capped Andes of Bolivia. Visit a local family's home to witness their daily life and learn about their intricate textile craftsmanship.

Lunch is served at a typical island restaurant before you'll have time to relax on the lakeshore.

Later, return by motorboat to Puno and the hotel where you can enjoy the remainder of the day at leisure.

**Overnight:** Jose Antonio Puno or similar  
**Meals included:** Breakfast; Lunch

### Day 13 Puno - Lima

Today, at the appropriate time, you'll be transferred to the airport for your onward flight to Lima. Once arrived in Lima, make your own way to the airport hotel for an evening of rest before the adventure continues the following day.

**Overnight:** Costa del Sol Wyndham Lima Aeropuerto or similar  
**Meals included:** Breakfast

### Day 14 Lima, Peru - Buenos Aires, Argentina

Today, at the appropriate time, make your own way to the international airport for your flight to Buenos Aires, Argentina. Once arrived in Argentina, you'll be met by a tour representative and transferred to the hotel.

*Please note: HX Expeditions requires all guests to complete a Medical Screening Form for certain remote destinations, including Antarctica. This form is divided into two sections: Section A (completed by you) and Section B (completed by your doctor). The forms must be submitted for review 4-8 weeks prior to departure. If the required information is missing, you may need to resubmit. Failure to complete the forms may result in being unable to board the cruise. Please refer to the Other Important Information section for a suggested packing list for your Antarctica voyage.*

**Overnight:** Hotel NH Buenos Aires Tango or similar  
**Meals included:** Breakfast



## 28-DAY CRUISE & TOUR PACKAGE | MACHU PICCHU & ANTARCTICA EXPEDITION

# The Itinerary

### Itinerary 2

#### Day 15 Buenos Aires - Ushuaia - Board HX Expeditions Ship

This morning, you'll be transferred from the hotel to the airport for your early flight to Ushuaia. Here, a hybrid-powered, state-of-the-art HX Expeditions ship awaits. Ushuaia, often competing with Chile's Puerto Williams for the title of the southernmost city in the world, is set against the stunning Martial Glacier and is known as the 'end of the world'.

Upon arrival, you'll attend a mandatory health and safety briefing before enjoying a welcome dinner hosted by the Expedition Team. Afterwards, take some time to explore the ship, which will be your home for the next eleven days.

*Please note: Two different expedition ships are used during the Antarctic season. For specific details about which ship operates on your departure date, refer to the Cruise section in the Important Information.*

**Overnight: MS Fridtjof Nansen or MS Roald Amundsen**

**Meals included: Breakfast; Dinner**

#### Day 16 Drake Passage

Today, the ship will cross the infamous Drake Passage, named after English sea captain Sir Francis Drake who stumbled upon it in 1578. With no landmass at this latitude, the waters can be turbulent. However, don't worry as HX's ultra-modern expedition ships easily handle the "Drake Shake."

The two-day journey across the 1000 kilometre-wide passage gives you time to prepare for your Antarctic adventure.

The Expedition Team will begin their lecture series in the onboard Science Centre, sharing their extensive experience and teaching you how to make your visit safe and sustainable. You'll also learn how to comply with IAATO guidelines, including wearing sterilised rubber boots when ashore and vacuuming your clothing to remove foreign contaminants. During this time, you can participate in exciting "Citizen Science" projects like whale counting, cloud observation and sample collection.

Take advantage of the other amenities by working out in the gym, relaxing in the Wellness Area or enjoying meals at any of the three exquisite restaurants. Don't forget to head out on deck to look for the first icebergs and spot wildlife like whales, dolphins and seabirds.

**Overnight: MS Fridtjof Nansen or MS Roald Amundsen**

**Meals included: Breakfast; Lunch; Dinner**

#### Day 17 Drake Passage

Today, you'll continue your journey across the legendary Drake Passage. Take this opportunity to unwind and immerse yourself in the onboard experiences. With each passing hour, the excitement builds as you draw closer to the icy wonderland of Antarctica, which you'll arrive at the following day.

**Overnight: MS Fridtjof Nansen or MS Roald Amundsen**

**Meals included: Breakfast; Lunch; Dinner**



## 28-DAY CRUISE & TOUR PACKAGE | MACHU PICCHU & ANTARCTICA EXPEDITION

# The Itinerary

## Itinerary 2

### Day 18 Antarctica

Land ho! Welcome to the icy wonderland of Antarctica. For the next five days, you'll be surrounded by vast icy waters, towering glaciers and colossal icebergs that seem to stretch into infinity. The sheer scale and beauty of the landscapes are almost otherworldly. The silence of this frozen world is often interrupted by the excited shouts of fellow passengers as penguins, seals and whales make their appearances.

Antarctica's landscape and wildlife are constantly evolving with the seasons. During the late spring months of October and November, the snow-covered terrain appears even more pristine, providing the perfect backdrop for penguins as they court and build their nests. By December and January, the arrival of more whales marks the height of summer, coinciding with the hatching of penguin chicks. February and March offer the ultimate whale-watching experience when large pods are drawn to the rich feeding grounds of krill in Antarctic waters.

Once you arrive, the Expedition Team will take every opportunity to explore the environment with you. Whether you're cruising through the ice or taking Zodiac landings, you'll get up close and personal with this frozen paradise. Spotting penguins from the ship is exhilarating, but the experience becomes even more awe-inspiring when you're on land, surrounded by these charming creatures. As you cruise in smaller explorer boats or take part in optional kayaking excursions, you may even encounter seals or whales right next to you. Be sure to keep your camera ready at all times to capture these unforgettable moments.

To enrich your journey, the Expedition Team will share their expertise on a variety of fascinating topics, including the history of Antarctica and the intriguing science of glaciology. Every day will bring new discoveries and unforgettable experiences as you explore this awe-inspiring continent.

**Overnight: MS Fridtjof Nansen or MS Roald Amundsen**  
**Meals included: Breakfast; Lunch; Dinner**

### Day 19 Antarctica

Be sure to speak with your Expedition Team onboard to book optional excursions for your time in Antarctica.

Optional Activity: Antarctica Camping

Duration: 10 hours

In the true style of the early explorers, venture out at night for a once-in-a-lifetime experience as you go camping in the Antarctic night. This activity features top-of-the-line camping equipment that meets Antarctic standards for camping on snow and ice. Imagine yourself sleeping under the Antarctic sky with little more than the thin wall of a tent separating you from the elements. The adventure starts with a pre-camp briefing by the expedition staff who accompany you on the activity. They set up your camp after dinner, with guests participating from beginning to end. If you have never pitched a tent before, this is your chance. After the camp is set up, you can either go to bed or sit outside and marvel at the stillness. Depending on the landing site, you may take short walks to nearby viewpoints and visit penguin colonies on the bright Antarctic night. If you like, wake up early, climb out of your tent and watch the sunrise. In the morning hours, take



## 28-DAY CRUISE & TOUR PACKAGE | MACHU PICCHU & ANTARCTICA EXPEDITION

### The Itinerary

#### Itinerary 2

down the camp, and the boats pick you up for the return trip to the ship. Back on board, enjoy a special breakfast and debrief the experience.

*Please note:*

- *This activity may have limited availability. If space becomes limited, participants will be chosen via a lottery-based lucky draw.*
- *As an IAATO member, HX adheres to all guidelines associated with onshore overnight stays in Antarctica. They leave nothing behind and remove all traces of their presence to protect wildlife and the fragile environment.*

Optional Activity: Antarctica Snowshoeing

Duration: 2 hours

Feel the spirit of the early Antarctic explorers. Join them for a walk on the wild side with snowshoes. Climb hills, cross glittering white plains and step on untouched landscape. The experienced Expedition Team will guide you to places with awe-inspiring views. You might even observe penguin colonies or even see whales swimming in the sea from above.

Optional Activity: Antarctica Kayaking

Duration: 3 hours

Merge with nature on an exceptional Antarctic sea kayaking adventure, getting up close to awe-inspiring icebergs and glaciers. Paddling through crystal-clear water you might spot seals, penguins and even whales. The experienced Expedition Team will take you to stunning Antarctic areas with high chances of encountering wildlife.

**Overnight: MS Fridtjof Nansen or MS Roald Amundsen**  
**Meals included: Breakfast; Lunch; Dinner**

#### Day 20 Antarctica

**Overnight: MS Fridtjof Nansen or MS Roald Amundsen**  
**Meals included: Breakfast; Lunch; Dinner**

#### Day 21 Antarctica

**Overnight: MS Fridtjof Nansen or MS Roald Amundsen**  
**Meals included: Breakfast; Lunch; Dinner**

#### Day 22 Antarctica

**Overnight: MS Fridtjof Nansen or MS Roald Amundsen**  
**Meals included: Breakfast; Lunch; Dinner**

#### Day 23 Drake Passage

After having delved into the remote and wild continent of Antarctica, it will be time to set sail homeward bound. Crossing back over the Drake Passage, the Expedition Team will recount the journey's many experiences at the Science Centre.

**Overnight: MS Fridtjof Nansen or MS Roald Amundsen**  
**Meals included: Breakfast; Lunch; Dinner**

#### Day 24 Drake Passage



## 28-DAY CRUISE & TOUR PACKAGE | MACHU PICCHU & ANTARCTICA EXPEDITION

# The Itinerary

## Itinerary 2

**Overnight:** MS Fridtjof Nansen or MS Roald Amundsen

**Meals included:** Breakfast; Lunch; Dinner

### Day 25 Disembark Cruise - Ushuaia - Buenos Aires

Today marks the final day of your unforgettable Antarctic adventure as the ship returns to Ushuaia. Having ventured to the bottom of the world, you've explored the remote and extraordinary Seventh Continent.

Upon arrival in Ushuaia, you'll disembark and transfer to the airport for your flight back to Buenos Aires. Once arrived, be transferred to the hotel where you can enjoy the remainder of the day at leisure.

**Overnight:** Hotel NH Buenos Aires Tango or similar

**Meals included:** Breakfast

### Day 26 Buenos Aires City Tour & Tango Show

This morning, after breakfast, embark on a city tour of Buenos Aires to discover the charm and magic of this vibrant metropolis. Begin at Plaza de Mayo, a key site in Argentina's political history that's surrounded by iconic buildings. Here, you'll learn about the area's significance before heading to San Telmo, one of the city's oldest neighbourhoods.

Next, explore the colourful neighbourhood of La Boca, famous for its tango culture and vibrant Caminito Street. You'll also visit important landmarks such as La Casa Rosada (the Presidential Palace, known as The Pink House), the Cabildo (the colonial town

hall) and the Neoclassical Metropolitan Cathedral. Finally, admire the celebrated Recoleta Cemetery, a true labyrinth of ornate mausoleums.

In the evening, you'll be picked up and transferred to Cafe de los Angelitos for a three-course dinner and unforgettable tango show. Cafe de Los Angelitos has been a living witness to over a century of Buenos Aires' history. Now, as a leading venue for tango in the city's most elegant setting, it preserves the luxury and distinction of a bygone era while writing the first chapter of its future. Enjoy performances by tango orchestras, folk music, dancers and singers.

After the show, you'll be transferred back to your hotel.

*Please note: The group on departure date 06 December 2026 will enjoy the tango show a day earlier due to New Years Eve.*

**Overnight:** Hotel NH Buenos Aires Tango or similar

**Meals included:** Breakfast; Dinner

### Day 27 Buenos Aires Free Day

Enjoy a day at leisure in the beautiful Buenos Aires to perhaps wander through the artistic district of Palermo or partake in an optional activity.

#### Optional Activity: The Argentine Experience

Experience Argentina's culinary culture in a unique, interactive dinner unlike any typical dining or cooking class. Over a seven-course, 17-dish tasting menu, you'll explore traditional flavors, regional ingredients and Argentine storytelling. You'll also engage by folding your own empanadas, preparing chimichurri and



## 28-DAY CRUISE & TOUR PACKAGE | MACHU PICCHU & ANTARCTICA EXPEDITION

# The Itinerary

### Itinerary 2

making yerba mate. Connect with fellow travellers as expert chefs guide you through the rich traditions of Argentine cuisine, paired with five exceptional wines. Please see current pricing in Important Information.

- *Welcome: Patagonian trout tartar & Pét-Nat sparkling wine*
- *Hands-On: Empanada folding and chimichurri preparation*
- *Memory on a Plate: Savory chard fritters and farinata chickpea flatbread*
- *Picada: Chorizo, black sausage and grilled skirt steak*
- *Beef Tasting: Tenderloin with mushroom butter, slow-braised Thor's Hammer and grilled seasonal vegetables*
- *Dessert Tasting: Dulce de leche pancakes, chocotorta and dulce de leche flan*
- *Mate Class: Learn to prepare yerba mate, paired with alfajores filled with dulce de leche*

**Overnight:** Hotel NH Buenos Aires Tango or similar

**Meals included:** Breakfast

### Day 28 Buenos Aires, Argentina - Australia (or New Zealand)

Today, at the appropriate time, you'll be transferred to the airport in preparation for your return flight to Australia (or New Zealand).

**Meals included:** Breakfast

### Day 29 In Transit

Sit back, relax and reminisce on the memories created over the past weeks on your trip through South America and Antarctica.

**Meals included:** In-Flight

### Day 30 Arrive Australia (or New Zealand)

Once arrived in Australia (or New Zealand), make your own onward travel arrangements.

**Meals included:** None



## 28-DAY CRUISE & TOUR PACKAGE | MACHU PICCHU & ANTARCTICA EXPEDITION

### The Map

#### Itinerary 2



Offer available for a limited time or until sold out. TRIP A DEAL PTY LTD: 50149240433

Updated: 20 May 2026 13:43:46

Have a question about this deal? We're here to help.  
Call our friendly team on 1300 158 912



## 28-DAY CRUISE & TOUR PACKAGE | MACHU PICCHU & ANTARCTICA EXPEDITION

### Tour Inclusions

#### HIGHLIGHTS

- Take the journey of a lifetime, exploring Antarctica\* and Machu Picchu
- Cruise in style aboard a state-of-the-art HX Expeditions ship
- Witness extraordinary wildlife including penguin colonies and whales
- Look out for playful orcas, seals and soaring Antarctic seabirds
- Cross the Drake Passage, where the Atlantic meets the Pacific
- Set foot on the Great White Continent with guided Zodiac landings
- Deepen your knowledge with lectures from the onboard Expedition Team
- Uncover the mysteries of Machu Picchu with an expert guide
- Explore ancient ruins and bustling markets in Peru's Sacred Valley
- Relax in Aguas Calientes, surrounded by serene hot springs
- Discover Cusco's rich Inca heritage and iconic landmarks
- Connect with Quechua culture on an immersive experience in the Sacred Valley
- Soak up Argentina's culture with a 3-course dinner and tango show
- Walk Caminito Street in La Boca on a city tour of Buenos Aires
- \*Medical clearance is required prior to boarding for all expedition cruises to Antarctica

#### FLIGHTS

- Return international full-service flights (economy class), surcharges may apply
- All internal (international and domestic) flights (economy class) within South America

#### CRUISE

- 10-night all-inclusive Antarctica cruise with HX Expeditions
- Cruise aboard MS Fridjof Nansen or MS Roald Amundsen
- Multiple small group Zodiac landings and activities at numerous spectacular locations
- Breakfast, lunch and dinner in restaurants Aune and Fredheim
- Delicious coffee, tea and soft drinks all-day
- Enjoy a glass of wine or beer before dinner at the Pool Bar or unwind with an evening cocktail in the Explorer Lounge
- Whatever and whenever you fancy, drinks are available throughout the day and evening at no additional cost (excluding premium drinks)
- Gratuities included
- Complimentary Wi-Fi onboard

#### Onboard Activities

- In-depth lectures and discussions by Expedition Team experts
- Full use of the Science Centre, extensive library and advanced biological and geological equipment
- Citizen Science Programme, where you can assist with ongoing scientific research
- Photography tips and techniques for capturing landscape and wildlife from the onboard professional photographer
- Use of ship's hot tubs, infinity pool, panoramic sauna, outdoor and indoor gyms, and running track
- Informal gatherings with the crew for daily briefings

#### Landing Activities

- Escorted landings with small expedition boats
- Loan of boots, trekking poles and all equipment for activities



## 28-DAY CRUISE & TOUR PACKAGE | MACHU PICCHU & ANTARCTICA EXPEDITION

### Tour Inclusions

Complimentary wind and water-resistant expedition jacket (or other HX Expeditions kit)

Expedition photographers are on hand to assist you

#### ACCOMMODATION

15 nights of 4-star hotel accommodation

#### DINING

45 meals, including all while cruising

#### ESSENTIALS

Airline and cruises taxes and surcharges

English-speaking tour guides

Museum and archaeological site entrances as per itinerary

Return PeruRail Expedition Train tickets

#### TRANSPORT

Transportation by private air-conditioned vehicles

Return ticket to Aguas Calientes on Peru's Expedition Train

#### TRANSFERS

All airport and cruise port transfers (except on Days 11 and 12 when airport hotel accommodation is provided)

#### ITINERARY 2

All of the above, plus the following:

Spend 2 unforgettable nights in the Amazon Rainforest

Learn about products made in the Amazon

Witness diverse flora and fauna unique to the Jungle

Seek out caimans, otters, macaws, anacondas and more

Experience the captivating change in the rainforest's sounds as night falls

Marvel at breathtaking views of the Amazon's canopy from the lookout towers

Internal (economy class) flight from Lima to Puerto Maldonado, and Puerto Maldonado to Cusco

6 additional meals, including all meals while in the Amazon

Experienced Amazon jungle guide

Return boat transfers along the Madre de Dios river to the jungle lodge

Airport transfers

# Important Information

*\*Please note: All information provided in this brochure is subject to both change and availability. Prior to purchase please check the current deal for up-to-date information. If you have already purchased this deal, the terms and conditions on your Purchase Confirmation apply and take precedence over the information in this brochure.*

## Booking Information

After purchase, you will receive a receipt and a Purchase Confirmation, directing you to an online Passenger Information Form. You must complete the Passenger Information Form within 72 hours of purchase.

Any special requests, preferences and optional extras MUST be clearly stated in your Passenger Information Form. Any change requested after submitting your Passenger Information Form cannot be guaranteed, is strictly subject to availability and will incur surcharges as outlined in the Schedule of Fees below.

*Please note: All countries and territories have different entry requirements in relation to vaccinations, quarantine/isolation periods and travel restrictions. Due to the evolving nature, we would ask all of our customers to monitor, meet and adhere to the specific requirements of their intended destination(s) in the lead-up to and immediately before travel, as well as any requirements post-travel upon their return.*

## Our Policies

### Cancellation & Refund Policy

By placing a booking with us, you acknowledge the following important information:

- **we act as your booking agent;** TripADeal is a booking services provider, and curates the Travel Offers available on our website. We act as your booking agent, and we receive payment for the Booking Services as part of the booking price, however, we do not provide any of the Travel Services (flights, accommodation, tours or other products or services) included in your booking – the Travel Services are provided by a number of third party Travel Suppliers.

- **each booking is unique;** our Travel Offers are made up of a variety of different components and are, during the booking process, uniquely tailored to suit your requirements, for example, departure dates and ports, flight and room upgrades, tour inclusions, etc.

- **changes/modifications to your booking may not be possible;** once your booking has been made, changes or modifications may not be possible, and where possible, may incur a fee. It is important to ensure that the information you provide during the booking process is accurate and up to date, and that you read the Travel Offer carefully before placing your order.

- **Travel Offers are a package;** our Travel Offers have been curated into package offerings and must be used as a package – individual components cannot be used independently of the full package offering.

- **our Travel Offers are generally non-refundable;** in order to provide great value Travel Offers, we work with a variety of Travel Suppliers to find the best deals – this often means the Travel Suppliers' offerings are non-refundable to ensure the best price. We recommend that you obtain travel insurance as soon as you make a booking with us. If your plans change, you can receive a full refund (excluding credit card fees) if you cancel at least 12 months in advance to your scheduled departure date.

To read more about our Cancellation and Refund Policy, please [click here](#).

### General Terms & Conditions

By placing your booking with us, you acknowledge and agree to our [Terms & Conditions](#), [Privacy Policy](#) and [Cancellation Policy](#).

## Offer Essentials

This Travel Offer is valid for travel on selected dates until the 6 February 2027  
Minimum group size 10, maximum group size 20 per vehicle.

### Departure Dates & Surcharges

See checkout for live dates and availability.

### Single Traveller Supplement

For solo travellers, a limited number of single cabins are available on the Antarctica cruise. Please select the "solo" option in the purchase cart, which includes a solo cabin onboard the cruise as well as private rooms for all land touring portions of the trip.

### Child Policy

- No child discounts. The full price applies to all children travelling with their parents.
- Valid for children 12 years old and over.

*Please note: Children must be accompanied by a responsible adult 21 years old and over to travel. No unaccompanied minors are allowed.*

## Flights

### Departure Cities

Sydney, Melbourne, Brisbane\*, Adelaide\*, Perth\* or Auckland

### Departure City Surcharges

- Brisbane: \$300 per person
- Adelaide: \$400 per person
- Perth: \$700 per person

### International Flight(s)

- Cabin Class: Economy Class

*Please note: We cannot accommodate one-way flights. Travellers must take all included flights within the package, and any flights intentionally forfeited will result in later flights being subject to cancellation.*

### Internal Flight(s) Used

- Cabin Class: Economy Class
- Route - Itinerary 1: Lima to Cusco, Cusco to Buenos Aires, Buenos Aires to Ushuaia, Ushuaia to Buenos Aires
- Route - Itinerary 2: Lima to Puerto Maldonado, Puerto Maldonado to Cusco, Cusco to Buenos Aires, Buenos Aires to Ushuaia, Ushuaia to Buenos Aires

### Internal Flight Information

Baggage allowance per person:

# Important Information

- 1 x 23kg of checked baggage
- 1 x 7kg of carry-on baggage

## Arrive Early & Stay Behind Options

Fly out and return home up to 60 days pre and post your tour dates.

### Arrive Early

Lima, Peru - From \$300 per person, subject to availability (Itinerary 1 & 2).  
Santiago, Chile - From \$400 per person, subject to availability (must be purchased over the phone).

### Stay Behind

Buenos Aires, Argentina - From \$300 per person, subject to availability (Itinerary 1 & 2).  
Santiago, Chile - From \$400 per person, subject to availability (must be purchased over the phone).

*Please note:*

#### • Exclusions:

*This fee does not include extra nights' accommodation, meals or airport transfers.*

#### • Cancellations & Changes:

*Flight booking changes or cancellations after air tickets have been issued are not guaranteed and may incur additional fees and fare difference, subject to the airline cancellation and change policies. Flight changes are subject to availability at the time of booking.*

#### • High Season:

*A high-season Arrive Early or Stay Behind can be purchased for an additional charge, subject to availability. For pricing, please refer to the cart.*

#### • + 60 Days:

*You can fly out up to 60 days before your package's start date, and/or return home 60 days after your package's end date. Should you wish to fly out or return home for more than 60 days from the tour, please contact us to request availability. Additional costs may apply.*

#### • Estimated Dates:

*Your estimated departure, return, and arrival dates are all subject to availability and may vary. The confirmed schedule for all flights will be provided when you receive your flight tickets.*

#### • High season surcharges apply to flights departing between the below date ranges:

18th September 2026 - 9th October 2026  
12th December 2026 - 18th December 2026  
19th December 2026 - 3rd January 2027  
4th January 2027 - 26th January 2027  
19th March 2027 - 28th April 2027

## Stopover Packages

- Santiago, Chile

Includes:

- 2, 3 or 5 nights in 4-star accommodation
- Daily breakfast
- Return airport transfers

For pricing, please refer to the payment cart at checkout.

- When a pre and post-tour stopover is chosen, the same stopover location must be chosen each way, due to the airline used.
- When selecting to Arrive Early for your tour in conjunction with a Stopover Package, your fly out date from home will take place before the stopover.
- When selecting to Stay Behind after your tour in conjunction with a Stopover Package, your stopover will take place before your final flight home.
- Stopover packages are subject to availability.
- In the event that a purchased stopover package and a purchased preferred airline upgrade are not compatible, you will have the option to receive a refund for the preferred airline upgrade or be offered an alternative stopover city option, e.g if you choose to fly with Singapore Airlines you cannot stopover in Dubai.
- Blackout dates apply to flights departing between the below date ranges:  
12th December 2026 - 18th December 2026  
19th December 2026 - 3rd January 2027  
4th January 2027 - 26th January 2027

19th March 2027 - 28th April 2027

## Flight Class Upgrades

Business or Premium Economy Class: For pricing, please refer to the payment cart at checkout.

*Please note:*

- *Flight upgrades are subject to availability and pricing changes (if we cannot fulfil your request, the upgrade cost will be refunded).*
- *On any upgrade purchase, short-haul flights and domestic flight sectors are not guaranteed.*

## Outbound Flights

*Please note: Due to flight scheduling and availability, some departures may occur on Day 0. Affected customers must be available to depart the day before. Flight times will be indicated on your final documents, issued 4-6 weeks before departure.*

## Missed Flights

If you fail to arrive for your outbound flight, you risk all flight and land arrangements in your destination being automatically cancelled by the airlines and land operator, respectively. Additional fees may apply to reinstate these services. If you miss your flight for whatever reason, please contact us as soon as possible to make arrangements.

## Cruise

### Medical Disclaimer

Travel to Antarctica is physically demanding, and our Travel Suppliers require all guests to obtain medical clearance before departure even if you don't intend to disembark at Antarctica. This involves completing a medical form and may require medical clearance from a doctor, which could incur additional costs. Any guests who fail to provide the necessary medical documentation will be denied boarding.

### Ship: HX Expeditions MS Fridtjof Nansen or MS Roald Amundsen

Featuring HX Expeditions' revolutionary battery hybrid powered propulsion system,

# Important Information

MS Fridtjof Nansen is a near identical twin to her sister ship, MS Roald Amundsen. Combining state-of-the-art technology and premium onboard experience with 130 years of experience and unparalleled destinations, the Norwegian-built ship introduces the next generation of adventure travel.

## Departure Dates & Vessel

- Itinerary 1: 29 October 2026 & Itinerary 2: 27 October 2026 (ship departure date from Ushuaia: 10 November 2026) - MS Fridtjof Nansen
- Itinerary 1: 8 November 2026 & Itinerary 2: 6 November 2026 (ship departure date from Ushuaia: 20 November 2026) - MS Fridtjof Nansen
- Itinerary 1: 28 December 2026 & Itinerary 2: 26 December 2026 (ship departure date from Ushuaia: 10 January 2027) - MS Roald Amundsen
- Itinerary 1: 17 January 2027 & Itinerary 2: 15 January 2027 (ship departure date from Ushuaia: 29 January 2027) - MS Fridtjof Nansen
- Itinerary 1: 27 January 2027 & Itinerary 2: 25 January 2027 (ship departure date from Ushuaia: 8 February 2027) - MS Fridtjof Nansen
- Itinerary 1: 6 February 2027 & Itinerary 2: 4 February 2027 (ship departure date from Ushuaia: 18 February 2027) - MS Fridtjof Nansen

## Facilities Onboard

### Cabins & Public Areas

The stunning scenery will be reflected in a rich and comfortable interior design. Scandinavian materials from nature, such as granite, oak, birch and wool will be used to create relaxed and stylish cabins and public areas. All cabins are outside and 50% with a private balcony.

### Science Centre

The core of the onboard experience is the Science Centre, an edutainment venue where guests and crew meet to create a deeper understanding of the areas we explore. Science Centre will also be the onboard HQ for the Expedition Team.

### Restaurants

Three onboard restaurants will host a variety of dining options, with menus drawn from rich Norwegian and Nordic traditions, as well as international cuisine and local inspiration. Whether enjoying your meal at Aune Main Dining, Fredheim – the informal international meeting place, or the specialty restaurant Lindstrøm, you will indulge in low-key yet refined, modern Norwegian Nordic cooking – where our honest and delicious cuisine reflects our destinations.

### Everything You Need For An Expedition Cruise

Each expedition voyage is accompanied by a hand-picked team of specialists and modern-day explorers. Highly experienced, passionate and knowledgeable, the Expedition Team will be your guides and guardians on your voyage of exploration, instructing you on safety, sustainability and science. 'MS Fridtjof Nansen' and 'MS Roald Amundsen' will feature a variety of custom-built expedition equipment including kayaks, a fleet of Blueye underwater drones and Expedition Boats for safe landings in remote areas.

### Onboard Currency

EUR

### Cabins/Staterooms

#### RR - Polar Outside

The Polar Outside cabins are primarily on the middle decks. Most are 20 square metres with windows and flexible sleeping arrangements, as well as a TV and a bathroom with a shower. Larger cabins on lower and middle decks are 19 - 23 metres squared with flexible sleeping arrangements, a double bed that can be divided into two single beds (some with a sofa bed) and a TV.

#### XT/XTD - Arctic Superior Cabins

Arctic Superior cabins are comfortable and roomy and have a balcony. These are high-deck cabins with a balcony. The spacious cabins are of different sizes with flexible

sleeping arrangements (some with sofa beds), TV, kettle, tea and coffee.

#### *Please note:*

- *Cruise timetables are subject to change.*
- *Some cruise cabins may have restricted views, based on availability.*
- *Cruise cabins are booked on a guaranteed basis and are assigned by the cruise line prior to departure. Your cruise cabin number will be reflected in your final documents.*

### Expeditions To Polar Waters

- Warm winter jacket
- Wind and water-resistant trousers long thermal underwear and a top (we recommend wool)
- Warm cap or headband
- You should also bring swimwear for use in our on-deck whirlpools
- A scarf or fleece tube
- Warm woollen jumper and fleece jumper/jacket, remember layers are essential
- Sunglasses with UV filter lenses
- Gloves and mittens, fleece and wool
- Warm socks
- Bring extra batteries for your camera, as battery life is shorter in cold areas
- Shoes with good soles are recommended for outdoors, on deck, and for excursions ashore. Make sure they are worn-in walking boots

### Cruise Arrival & Departure Times

Please keep in mind that the provided cruise arrival and departure times are approximate and will be finalised upon receipt of your cruise tickets.

## Accommodation

### Accommodation Used

#### 4-Star Properties (Self-Rated)

- Lima, Peru: Jose Antonio Lima or similar
- Cusco: Costa del Sol Wyndham or similar
- Sacred Valley: San Agustin Monasterio de la Recoleta or similar
- Aguas Calientes: Hatun Inti Boutique or similar
- Puno, Peru: Jose Antonio Puno or similar

# Important Information

- Lima Airport, Peru: Costa del Sol Wyndham Lima Aeropuerto or similar
- Buenos Aires, Argentina: Hotel NH Buenos Aires Tango or similar

## Itinerary 2: Un-Rated Speciality Accommodation

Amazon Jungle, Peru: Posada Amazonas Lodge or similar

*Please note: Accommodation/rooms offered are based on a lead-in room type and are subject to availability based on seasonality. In the instance a property is not available, a similar standard of accommodation will be provided. Properties will be confirmed and included in your travel pack, which you will receive 4-6 weeks before travel.*

## Extra Nights

Not available.

## Maximum Room Capacity

2 people.

## Triple Share

Not available.

## Bedding Configuration

Twin or double (subject to availability).

## Optional Tours/activities

- Express Inca Trail Trek - \$690 per person (non-refundable, non-transferable)
- Maras & Moray - \$85 per person
- Rainbow Mountain Trek - \$175 per person
- Andean Cooking Class - \$160 per person
- Folklore Dinner & Show - \$50 per person
- The Argentine Experience - \$175 per person
- Optional Train Upgrade: Cusco - Puno - \$615 AUD per person\*

\*Please note: The train upgrade is only available for departures where this travel day falls on a Wednesday, Friday, or Sunday (where Itinerary 1 Day 1 departure date is a Tuesday, Thursday, or Saturday or Itinerary 2 Day 1 departure date is a Sunday, Tuesday, or Thursday).

## Itinerary 1

6 February 2027

## Itinerary 2

4 February 2027

### Please note:

- *Prices are based per person, are subject to availability, time permitting and weather conditions*
- *Optional tours can be booked at checkout or by phone before submitting your passenger information form (subject to availability). Alternatively, you may book directly with the tour guide, but please note this is strictly subject to availability.*
- *Some tours or shore excursions require minimum numbers to operate.*
- *Shore excursions can be booked/reserved directly with the cruise line before travel (subject to availability)*
- *Shore excursions can also be booked whilst onboard (subject to availability).*
- *Shore excursion programmes and itineraries may vary depending on local conditions and/or any unforeseen events concerning the timing on the day of the tour. Some excursions are very popular, and therefore availability cannot always be guaranteed, it is advisable to book in advance to avoid disappointment.*

## Exclusions

- Visa fees and requirements
- Domestic transfers and flights not stated in the deal offer
- Meals/beverages not stated in the deal offer
- Optional gratuities/tipping
- Optional activities/tours
- Personal expenses
- Travel insurance
- Any costs associated with an interruption to your tour as a result of an airline schedule change or cancellation
- Mandatory city tax
- Some specialist excursions and experiences with limited capacity
- Fine dining in the Lindstrøm restaurant
- Personal spa treatments onboard
- Premium drinks onboard (top shelf spirits, vintage wines, champagne, etc.

## Gratuities/tipping

## Land

Gratuities (tips) are not included for the services of the tour leader (when available) and driver throughout the tour. The recommended tip is \$8 - \$10 USD per person per day. This covers the guide/leader and the driver and will be collected on tour.

*Please note: Tipping for services provided is always a matter of personal discretion; however, please be aware that many locals consider tipping part of their normal remuneration, and they may approach you for payment; there's no need to be intimidated by the request.*

## Cruise

It is not standard practice to tip on HX ships, but if you feel that certain crew members should be rewarded for providing exceptional service, there are tip boxes in the restaurant together with envelopes.

## Other Important Information

### WHAT TO PACK FOR AN EXPEDITION CRUISE

To make packing a bit easier, HX has drawn up a packing list. If you should forget something, don't worry! On board all the ships you will find a shop with a wide range of clothes and practical items.

- Onboard it's smart to wear ordinary shoes.
- Bring a memory card with a large capacity – there are sockets in the cabins to recharge photo equipment.
- The dress code aboard the ship is relaxed and casual and you are not expected to dress formally for meals.
- Extra shoelaces are also a good idea.
- Bring a good pair of binoculars.
- A small waterproof backpack is necessary for carrying essentials.
- Please remember to bring your passport and a copy of it.
- Sun protection.
- Sunglasses with UV filter lenses.
- Lip balm with UV protection. Dry, cold wind and sun often cause chapped lips.

# Important Information

- Money in the correct currency. Remember, the ships also accept several credit cards.
- Remember to bring sufficient medication to last through any unforeseen delays.
- You will receive a wind and water-resistant parka as a memento on this ship (or another piece of HX kit).
- Rubber boots are available on loan, at no extra cost.
- Warm winter jacket
- Wind and water-resistant trousers and long thermal underwear and top (we recommend wool)
- Warm cap or headband
- You should also bring swimwear for use in our on-deck whirlpools
- Scarf or fleece tube
- Warm woollen jumper and fleece jumper/jacket, remember layers are essential
- Sunglasses with UV filter lenses
- Gloves and mittens, fleece and wool
- Warm socks
- Bring extra batteries for your camera, as battery life is shorter in cold areas
- Shoes with good soles are recommended for outdoors, on deck, and for excursions ashore. Make sure they are worn-in walking boots.

## TOUR GUIDE VS. TOUR LEADER

### Tour Guide

Often locals with intimate knowledge of an area, its culture, and history. Their role entails providing commentary, routing the tour, and seeing that people have a good time. They are a licensed, qualified expert who supplies specific information on the history, art, architecture and culture of the city/village/attraction where they are guiding the tour. The guide meets the group at the required place and leaves it at the end of the tour; they do not travel with the group.

### Tour Leader

An experienced person tasked with ensuring the smooth operation of tours, as well as providing practical support to passengers throughout the whole trip. Their role primarily includes assisting with

accommodation, transportation between locations, and communication with tour guides at each stop. A tour leader may provide general guidance around a city or village and offer information on the place visited on the bus. However, they are not required to have specific art, architecture, or historical knowledge. They are not allowed to provide a guided tour or commentary of a city/village/attraction once there and, if caught doing so, can be fined.

*Please note: Tour leaders/guides are not a standard inclusion in all travel offers. Tour leaders/guides will only be made available when required to enhance the experience of the destination featured.*

## CLIMATE & AVERAGE TEMPERATURES

### Lima, Peru

Lima is usually described as mild and warm throughout the year without much noteworthy rain, making Lima one of the driest capitals in the world. The average temperatures range from 18°C to 28°C.

### Cusco, Peru

Cusco, located in the Andes Mountains of Peru, has a highland climate with distinct dry and wet seasons. The city's elevation, approximately 3,400 metres above sea level, contributes to its cooler temperatures.

### Dry Season (May to October)

This period is considered winter in Cusco and is characterised by dry and sunny weather. Days are generally clear, and temperatures can range from around 10°C to 20°C. However, nights can be quite chilly, with temperatures dropping to around 0°C.

### Wet Season (November to April)

Cusco's wet season coincides with the summer months. During this time, there is a higher chance of rainfall, and the weather can be more unpredictable. Daytime temperatures are still mild, ranging from 12°C to 18°C, but nights are relatively milder compared to the dry season.

It's important to note that due to its high altitude, Cusco's weather can vary significantly throughout the day. Visitors are advised to bring layers, including warm clothing for cooler evenings and mornings, as well as sun protection for the strong mountain sun during the day.

### Buenos Aires, Argentina

In December, average temperatures in Buenos Aires range from 18°C to 29°C with gentle breezes. January is considered the hottest month in Buenos Aires, and temperatures can range from 20°C to 30°C. You can expect to experience 14-15 hours of clear and sunny skies during these months and mid to high humidity.

### Seasons in Antarctica

Antarctica only has two seasons which are summer and winter. Because it's located in the southern hemisphere, Antarctica's summer is from October to February.

During this time, the sun is almost always in the sky. Days rapidly get longer there in summer, until, eventually, the sun doesn't set at all. This phenomenon is called the Midnight Sun. Although there are multiple places in the northern hemisphere that experience this perpetual sunlight during half of the year, Antarctica is the only southern location where it can be seen.

January is the warmest month in Antarctica, during which average temperatures climb all the way up to 0 degrees in the Antarctic Peninsula.

However, the average temperature ranges from -10 degrees celsius to -60 degrees, depending on how far into the continent you travel.

If anyone is in Antarctica once winter comes, they're staying until summer returns. Flights and ships cease travel to and from Antarctica once the weather starts to turn, as conditions become too treacherous for travel. Typically, researchers are the only people who brave the Antarctic night. This is a valuable time for astronomers, who can use complete darkness to get spectacular views of the universe. Climatologists are also busy during this time of year tracking and comparing the temperatures on and below

# Important Information

the continent's surface.

## Late Summer Cruising In Antarctica

### February to March

If you choose to go on an Antarctica cruise in February or March, you will be seeing the continent during its late summer period. This provides a variety of benefits, including the ability to explore more thoroughly as the ice melts and breaks apart, allowing for a high chance of seeing whales on the Peninsula.

### What Whales Might You See?

Late summer is the best time to see whales in Antarctica. It is most common to see Humpback whales, minke whales and killer whales, though it's possible to see many other species as well. These can include blue whales, fin whales, sei whales, southern right whales and sperm whales.

### What About Penguins?

By March, those adorable penguin chicks are growing up. They begin to fledge and grow into their adult feathers, while their parents may already have gone out to sea to begin to prepare for their own moulting season.

### Why Go During This Season?

If you're an explorer who wants to see as much of Antarctica as possible, choose a late-summer cruise. As the polar ice melts, you'll have access to points much farther south than you would during other travel seasons. You will certainly see some wildlife, as well, and will get to know the untouched majesty of Antarctica in this particular form.

## Weather

We always suggest referring to an online source for the most up-to-date weather information for your destination/s.

## FLIGHTS

### **Seat Selection & Frequent Flyer Points**

We do not arrange seat selection. It is essential to highlight that some airlines do not allow pre-selected seats. We strongly

suggest you contact the airline directly with seating allocation requirements and/or arrive at the airport earlier to arrange your seating. While we do not add frequent flyer member details to bookings, you can do this directly with the airline once you have your flight information.

### **Dietary Requests**

Meal options and availability differ between airlines and routes therefore not all dietary requests can be accommodated. If your flight includes meals we will select the most suitable option available based on the dietary requirements you have specified. All meal requests are subject to airline approval and are not guaranteed, therefore we recommend preparing for your flight by bringing appropriate food for yourself, as required.

### **Passport Validity**

Customers must provide valid passport details either at the time of purchase or no later than 120 days before the departure date. Failure to do so may result in the cancellation of the booking. Customers will be responsible for any costs and fees incurred in this instance.

## CRUISE

### **Embarkation/Disembarkation**

- Begins approximately 2 hours after docking.
- Due to security reasons, all guests must be on board 2 hours before sailing.
- Itineraries are subject to change at any time without notice.
- Check your specific sailing for exact departure and arrival times. All times are local to the port.

*Please note: Strict Covid-19 terms may also apply regarding proof of insurance covering Covid-19 and/or vaccination. Please refer to the cruise lines' terms and conditions for further information before boarding.*

### **Cruise Loyalty Discounts**

*Please note: Travellers must contact the cruise line directly upon receiving their travel*

*documents in order to request any membership benefits they may be entitled to.*

## COACH TOUR

### **Meals**

For meals not included, the tour leader (when available) will offer assistance with reservations, suggestions and directions to local restaurants. It is your responsibility to notify us of any dietary requests/requirements.

*Please note: We will do our best to meet your requests/requirements; however, we cannot guarantee that we will always be able to.*

### **Luggage**

You will be responsible for all your personal belongings whilst on tour. You must carry your own luggage from the vehicle to the hotel room and back to the vehicle. The driver will assist with the uploading and unloading of bags from the vehicle.

## OTHER

### **Mobility**

If you require wheelchair access please contact our friendly sales and service team to inquire on your behalf.

### **Fitness Level Required**

Adventure (and spontaneity) create some of the best travel memories. Bear in mind, your home schedules and timings might not be adhered to on tour - it's all part of the fun!

A moderate level of fitness will be required.

Expect a moderate pace of touring with a focus on guided tours that may include full days with extended activity, guided city tours or nature walks. You will require a general level of fitness for unassisted navigation of stairs and inclines, longer distances with possible periods of standing when visiting sites, walking on sloping, uneven ground or elevations. You will be responsible for your own luggage and have the ability to board all modes of transport without assistance.

This tour is not suitable for wheelchairs,

# Important Information

mobility scooters, or travellers requiring significant assistance. Please contact our sales team if you are unsure if this tour is suitable for you.

**Please note:**

- *Travellers must be self-reliant and able to undertake all aspects of their journey independently. Please discuss any personal circumstances or assistance requirements with your booking agent to confirm suitability for this tour.*
- *If you have any concerns, we recommend consulting your healthcare provider prior to booking or travel.*

## High Altitude Sickness

Altitude sickness can occur at high elevations when the body receives less oxygen. It can affect anyone, regardless of age or fitness, with symptoms such as headache, nausea, dizziness, fatigue and shortness of breath.

Tips to help prevent altitude sickness:

- Stay well hydrated and eat light, high-carbohydrate meals
- Avoid overexertion during the first 24–48 hours at high altitudes
- Limit alcohol and avoid smoking
- Consult your healthcare professional about preventive medications or your suitability for travel to high-altitude areas

Our local tour providers are trained in first aid, including high-altitude care, and have oxygen available for guests if needed. Medications are also readily available in Cusco.

*Please note: Inoculations may be required to enter the country visited, along with re-entry into Australia after your visit. It is your responsibility to consult with your travel doctor for up-to-date medical travel information well before departure.*

## Express Inca Trail Trek & Rainbow Mountain Trek Optional Activities

Active/demanding are more strenuous activities, suitable for a good fitness level and for guests who exercise regularly. More fast-paced activities and walking on uneven surfaces. A high fitness level is required to undertake activities, which

include high-altitude trekking for anywhere between four to seven hours per day for an extended number of days. Recommended for active travellers with some previous trekking experience.

*Please note: If you have any concerns, please consult your healthcare provider prior to purchase/travel.*

## Yellow Fever

A valid international certificate of vaccination against Yellow Fever is required in many countries. You may need to present this on arrival at the airport or border crossing. Some countries will refuse entry if you are unable to present your certificate. It's also common for your home country to request a Yellow Fever certificate upon arrival. You must check with your doctor well before leaving home about the Yellow Fever requirements for the countries you'll be visiting.

## Sightseeing

*Please note: If entry to a site is affected by changes in operating hours or public holiday closures, your itinerary, where possible, may be adjusted, or a similar activity will be offered in its place (subject to availability).*

## Wildlife

TripADeal cannot guarantee animal sightings. Wildlife are unpredictable and factors such as weather conditions, predatory fear and animal movements can impact sightings.

## Shopping

Shopping overseas can be a daunting and confusing experience, especially when there is a language barrier. Please be very cautious when foreign currencies and prices are involved. If paying by credit card, please pay close attention to the amount you are being charged and keep all your receipts. Do not make any purchases you are not comfortable with or feel pressured into. If you are uncertain or need assistance with the language barrier, please seek assistance from your Tour Guide/Leader. Please refer to our [Terms and Conditions](#) regarding shopping for

further information.

## Visas

### Peru

Tourists don't need a visa. You can get a permit to stay for up to 3 months when you arrive. You may need a valid yellow fever vaccination certificate to enter Peru. Some airlines may want to see one when you leave. If you've visited Peru in the previous 6 days, you'll need a valid certificate to enter Australia.

### Argentina

As a tourist, you can stay for up to 90 days without a visa, but you'll need evidence that you intend to depart the country within the 90 days, along with the following:

- A return or onward ticket and valid passport.
- Travel/medical insurance.

**Please note:**

- *Officials may also ask for proof of accommodation and evidence that you have enough money or a credit card to cover your trip.*
- *Effective immediately, all international travellers to Argentina must hold valid travel insurance with medical coverage. This insurance may be requested and verified upon arrival in the country. Argentina's public healthcare system will no longer provide free medical services to foreign nationals. It is therefore essential that you obtain appropriate insurance before your departure.*

### Chile (Transiting)

On 17 September, Chile announced Australians no longer need a visa for stays up to 90 days. If you're unsure whether you need a visa, contact the nearest embassy or consulate of Chile

### United States (Transiting)

In some instances, you may travel to South America through the USA, in this case an ESTA visa will be required: If travelling on an Australian passport, an ESTA (visa waiver) for the USA is a strict requirement

# Important Information

when travelling to or flying through the USA. Once a USA ESTA visa waiver is issued it is valid for 2 years or until your passport expires (whichever is sooner) and will allow multiple entries into the USA. For information on ESTA eligibility or to apply, please visit <https://esta.cbp.dhs.gov/esta/>.

*Please note: Due to recent changes to USA immigration policies, TripADeal recommends all travellers visit US Customs & Border Protection.*

## **New Zealand (Transiting) (Non-Australian Passport Holders)**

If you are not travelling on an Australian passport, and your flight transits through New Zealand, you may require a visa to onward travel. Some flight routes make a stop in New Zealand and you may be required to obtain a transit visa to board your flight. It is the passengers' sole responsibility to seek advice on the correct visa and take appropriate action to ensure they have the correct visa prior to departure. Failure to do so may result in denied boarding and or refusal of entry to the country by the local authorities and immigration department. We strongly advise you to carefully review your flight tickets and then contact your respective consulate or a visa agency to confirm the necessary visa regulations and acceptable forms of personal identification for your transit.

### **Important:**

- *Please start arranging your visa three weeks before departure to account for any delays due to consulate operating hours.*
- *Visa rules are subject to change. Please check with the nearest embassy, consulate or immigration department of the destination/s you are visiting once you receive your travel documentation to ensure you have the most up to date information.*
- *It is your responsibility to be travel-ready and ensure that you are aware and comply with any destination or travel requirements, including the validity of all required travel documents.*

- *Passengers who are not Australian citizens must also check with the respective consulate or visa agency to determine what their visa requirements are and what personal identification is required.*
- *It is also important to note that some areas of employment, such as journalism, government authorities and charity organisations, may have additional restrictions in applying for visas. This may, in turn, affect the type of application required.*

## **Travel Insurance**

Embarking on your next trip is exciting, and while you hope the unexpected does not happen, it is best to be prepared. We strongly recommend you take out travel insurance when making your booking. Whether it's a potential medical emergency, a flight cancellation, a delayed suitcase, or an unforeseen event, it's important to ensure you're adequately protected. For more information or advice visit <https://www.tripadeal.com.au/travel-insurance>.

## **Schedule Of Fees**

### **Voluntary Changes**

This includes booking changes requested by you, including but not limited to those changes requiring an airline ticket or a Purchase Confirmation reissue.

- Changes - \$100 per booking and any additional charges applied by the airline/ cruise company/accommodation/other travel providers.

### **Name Changes Due To Passenger Error**

If the incorrect name has been provided, charges of \$100 per booking and any additional charges applied by the airline/ cruise company/accommodation/other travel providers.

### **Supplier Fees**

In the event the tour package you have purchased is unable to proceed, and/or a Travel Supplier is unable to fulfil the tour due to external circumstances (Limitation of Liability e.g. a Force Majeure event),

there may be a fee or amount of money that is withheld by our Suppliers and is unrecoverable. This may be due to non-refundable airline tickets, cancellation penalties with cruise cabins or unrecoverable payments with our land/accommodation partners. If refunds are not available from Suppliers, we will endeavour to obtain a travel credit on the best terms available and communicate these outcomes to you. In the event we are unable to obtain a refund or travel service credit, or part thereof, this cost is passed on to the customer as a Supplier Fee.