

A wide-angle photograph of a snowy Antarctic landscape. In the foreground, two people wearing bright yellow expedition jackets and dark trousers are walking away from the camera across a vast, flat expanse of snow. In the background, a large, jagged mountain peak covered in snow and ice rises against a clear blue sky. A body of water with icebergs is visible between the people and the mountain.

# Antarctic Explorer Expedition Voyage

ARGENTINA ● ANTARCTICA

## The Offer

Experience a true bucket-list experience by stepping into Antarctica on an expedition including landings, hikes, Zodiac cruising and other activities.

Travel to Argentina, where a charter flight will take you to the world's southernmost city, Ushuaia, to board Quark Expeditions' World Voyager, a small-expedition ship with a maximum 168 passengers and an expert expedition team.

Every suite on the World Voyager features a private walk-out or French balcony. The ship has an elegant dining room offering globally-inspired cuisine. Public spaces include the glass-domed Observation Lounge with panoramic views, and the Explorer Lounge, perfect for relaxing and socialising. Stay active at the gym, relax in the sauna and enjoy its ocean views, unwind in the heated outdoor swimming pool and two Jacuzzis, or visit the Tundra Spa for treatments (charges apply). Interact with onboard scientists and expedition guides at the Science Hub, while the Theatre serves as the central location for a rich program of lectures and presentations on topics like wildlife and polar history.

While in Antarctica, access amazing included activities: Zodiac cruising for shore landings, sailing among icebergs and seeking wildlife. Experience organised hikes ranging from leisurely walks to more challenging treks. Why not experience a Polar Plunge? This classic rite of passage takes an exhilarating dip into the icy Antarctic waters, under the supervision of the Expedition Team.

A number of optional Antarctic activities are also available, including kayaking, paddling and an opportunity to spend a night sleeping under the Antarctic sky in a specialised sleeping bag (charges apply).

This unforgettable package includes return international flights, return charter flights, a 9-night all-inclusive cruise with Quark Expeditions, 3 nights of 4-star hotel accommodation in Buenos Aires, 29 meals and more.

**Want more? Book a cabin upgrade or add extra time to your itinerary pre or post-cruise in Argentina.**

Offer available for a limited time or until sold out. TRIP A DEAL PTY LTD: 50149240433

Updated: 02 Jan 2026 12:35:49

Have a question about this deal? We're here to help.  
Call our friendly team on 1300 158 912

1

FREQUENT  
FLYER

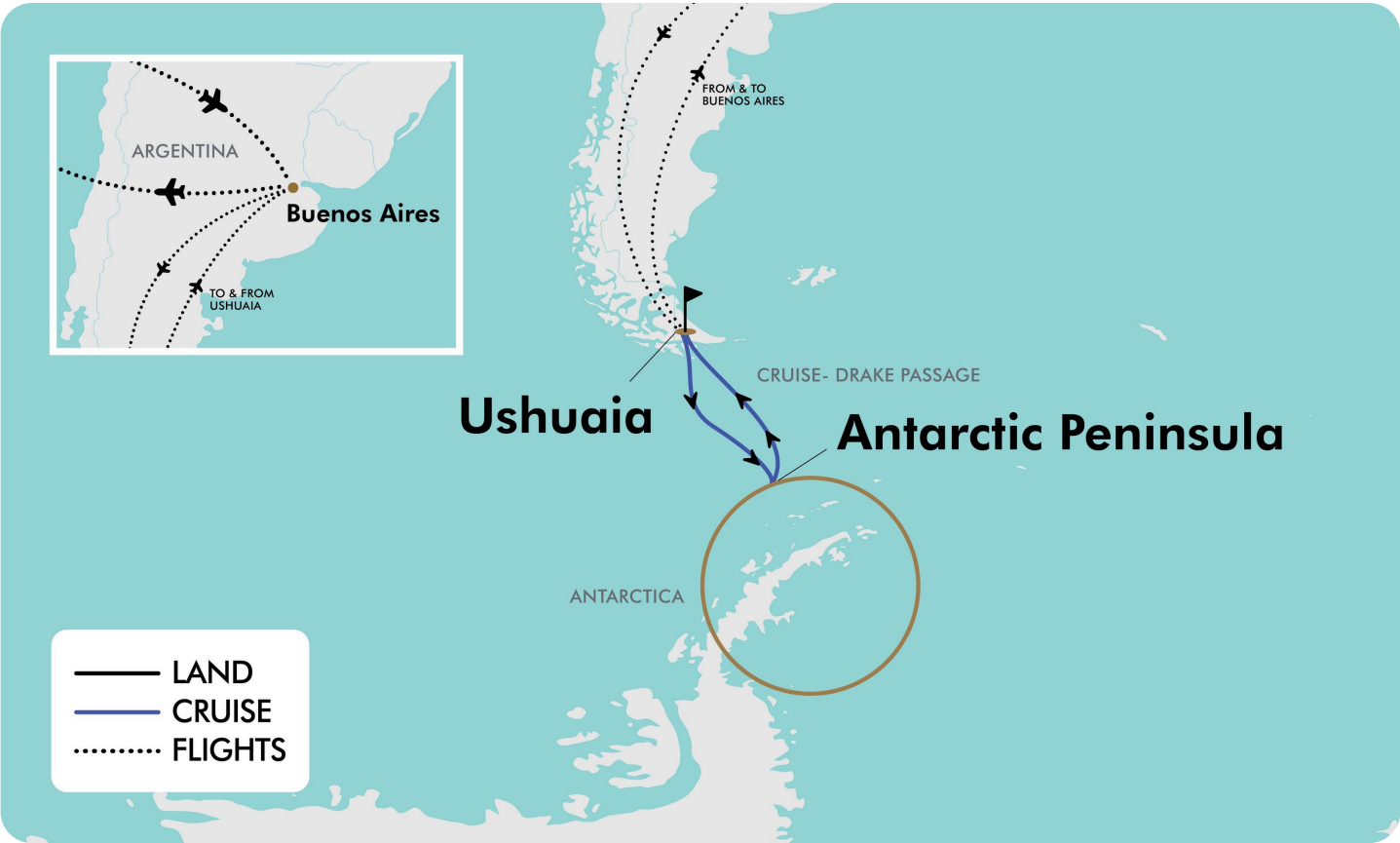


Trip  
aDeal



15-DAY CRUISE PACKAGE | ANTARCTIC EXPLORER EXPEDITION VOYAGE

The Map



Offer available for a limited time or until sold out. TRIP A DEAL PTY LTD: 50149240433 Updated: 02 Jan 2026 12:35:49

Have a question about this deal? We're here to help.  
Call our friendly team on 1300 158 912





## 15-DAY CRUISE PACKAGE | ANTARCTIC EXPLORER EXPEDITION VOYAGE

### The Itinerary

#### Day 1 Australia (or New Zealand) - Buenos Aires, Argentina

Today, make your own way to the airport to board your flight from Australia (or New Zealand) to Buenos Aires, Argentina.

Upon arrival, meet your driver and transfer to your hotel then enjoy the rest of your day at leisure.

**Overnight: Grand Brizo Buenos Aires or similar,**  
**Meals included: In-Flight**

#### Day 2 Buenos Aires - Ushuaia, Argentina - Begin 10-Night Antarctica Expedition

After an early breakfast at the hotel, you'll transfer to the airport and board a private charter flight to Ushuaia, Argentina.

Upon arrival, you'll be transferred from the airport to a central downtown location to enjoy some time on your own. Revel in the chance to explore this quaint port town before making your way to the pier. Embarkation will occur in the late afternoon, after which your vessel will sail down the historic Beagle Channel, which transects the Tierra del Fuego archipelago in the extreme south of South America. Expect an air of anticipation as you depart—the next time you see land, you'll be on the world's most southern continent!

#### Optional Activities:

During your voyage you will have opportunities to join optional activities to enhance your experience.

These activities are weather dependent and will be coordinated by the expedition team onboard and will operate on days where the conditions are optimal for your experience.

#### Paddling Excursion:

Duration: 1 - 1.5 hours

Fitness Level: Moderate - No past experience required

Glide through the pristine polar waters in a sit-on-top, two-person, inflatable kayak for an unforgettable experience in the Antarctic wilderness. These stable, rugged and comfortable crafts are an ideal way to see the polar regions from a different perspective. Experienced guides will lead you safely throughout the paddling excursion. Your group will always be escorted by an additional safety driver who will stay close by to provide additional support.

#### Stand-up Paddle-boarding:

Duration: 1 - 1.5 hours

Fitness Level: Moderate - Previous experience isn't necessary but comfortability with water is an asset.

SUP'ing adventures are offered in protected bays and channels during calm weather conditions. Stand-up Paddleboarding, popularly known as SUPing, originated in Hawaii. Quark Expeditions is the first company to bring this water sport all the way to Antarctica. SUPing combines the immersive experience of kayaking but in a standing position. Participants, if they prefer, can kneel, sit or even lie down and stare up at the azure Antarctic sky. Because of their wide base and tail fins, SUP boards are quite stable, enabling participants – after a bit of practice – to stop staring at their feet and admire the surrounding scenery. Imagine seeing Gentoo penguins gliding below you, or making eye contact with a Weddell seal lying on a piece of ice as you



## 15-DAY CRUISE PACKAGE | ANTARCTIC EXPLORER EXPEDITION VOYAGE

### The Itinerary

paddle by. Guests receive on-ship and on-water instruction from a qualified SUP guide. In addition, a safety driver (in a Zodiac) stays within range to offer assistance.

#### Sea Kayaking:

The kayak adventure option is open to all levels of experience. However, it is highly recommended that you have some sea kayaking related experience prior to kayaking in the polar regions with Quark Expeditions. Our sea kayaks are the ideal means by which to slow down and connect with the pristine natural environments and surroundings. Positioning yourself in the seat of a kayak is one of the most intimate ways travellers can connect with the polar regions—at water level, up close, where you can touch and feel every polar sensation imaginable. The Sea Kayak Program enables a small group of like-minded individuals to forge bonds as they explore fjords, glacial faces or mazes of sea ice. Conditions and logistics permitting, your kayak guide(s) will endeavor to have you paddling as often as possible throughout the voyage. Typically, sea kayakers are shuttled by Zodiac from the ship to an ideal starting point, where the kayak excursion begins. Guests return to the ship by Zodiac at the end of their paddling experience. Some kayak excursions are designed so guests can go ashore and explore.

#### Camping on Antarctica:

Imagine for a moment, staring at the stars in the indigo glow of an Antarctic night as you bed down for the night outside in the elements. The buzz of your daily life becomes a distant memory as you listen to the bray of penguin, the ethereal calls of the Weddell sea – even the exhalation of a humpback whale. And then you fall asleep. Antarctic Camping with Quark Expeditions is

an unforgettable experience. After dinner onboard, you'll be escorted ashore by Zodiac to camp out on the snow for the night in your ready-to-roll bivy sack (tents can be used upon request). Once you decide on your spot, you set up camp and enjoy the peace as the Antarctic night unfolds. Camping in Antarctica is limited to 50 participants, all of whom will be briefed beforehand on the principals of basic camping. Prior to you settling down for the night, Quark Expeditions staff will prepare the site, including setting up a perimeter in safe, flat to gently-sloping and beautiful site. You're free to choose where (within the perimeters) you want to settle down for the night.

You'll be equipped with the following:

- Mummy-style sleeping bag
- Bivy sack Insulated sleeping pad
- Sleeping bag liner
- 3 or 4 season tent provided upon request (pending availability)
- Quark Expeditions parka
- Waterbottle (Small collapsible reusable water bottles provided onboard upon embarkation)
- Muck boots (insulated waterproof boots provided onboard upon embarkation)

Other recommended gear:

- Base and mid-layer clothing
- Warm hat
- Warm gloves
- Hand-warmers
- Camera and accessories
- Backpack
- Eye mask if you wish complete darkness





## 15-DAY CRUISE PACKAGE | ANTARCTIC EXPLORER EXPEDITION VOYAGE

### The Itinerary

- Need a pillow? Roll up your parka!
- Essential medication and or supplements
- Optional activity rates are available in the Important Information section.
- Age restrictions might be limited to participation due to safety concerns.
- Must be fluent in English to participate due to safety.
- The adventure options offered are extremely limited in space and we encourage you to book in advance.

#### Quark Expeditions 'World Voyager'

**Meals included: Breakfast; Lunch; Dinner**

#### Day 3 Drake Passage Crossing

Your days at sea are filled with presentations led by your Expedition Team on photography, wildlife, glaciology, and history. In between presentations, spend time on deck looking for wildlife, or chatting with your shipmates over a drink at the bar.

#### Quark Expeditions 'World Voyager'

**Meals included: Breakfast; Lunch; Dinner**

#### Day 4 Drake Passage Crossing

Crossing the legendary 800-kilometre stretch of water is a must-do for many travellers. Prepare yourself for dramatic seascapes as you stand on the deck of World Voyager and gaze at the water stretching beyond the distant horizon. Be on the lookout for dolphins, whales and seabirds as they glide over the waters. As the ship approaches the Antarctic Peninsula, keep your eyes peeled for your first glimpse of towering, multi-shaped icebergs.

#### Quark Expeditions 'World Voyager'

**Meals included: Breakfast; Lunch; Dinner**

#### Day 5 South Shetland Islands and Antarctic Peninsula

The most common reaction upon reaching the 7th Continent is a sense of reverence and awe. The experience is beyond words, since few places are as untouched and enduring as Antarctica. You will begin to appreciate why this region has long captivated the attention of explorers and travellers alike. Every time people visit Antarctica, they witness something new or unexpected, which means that your expedition will be unlike any other—creating a unique, personal experience. Each day, you will take Zodiac excursions from the ship to explore glaciated bays, channels and landing sites. Your Expedition Team will take care of you at each landing, whether you are hiking the Antarctic landscape, visiting a research station or consorting with chinstrap, Adelie and Gentoo penguins, all of which can be found here. Keep an eye out for Weddell, fur, Crabeater and leopard seals as well as curious whales, such as humpbacks, minke or perhaps orcas while on a Zodiac cruise. Each excursion will present a new array of creatures to fascinate you and keep your camera busy. Amid the serene silence of Antarctica, noisy interludes become indelible memories, such as penguins squabbling over prized pebbles, or the boom and crack of a calving glacier. Every day will be different, having been carefully crafted by your Expedition Team to inspire and educate you about this wonderful part of the world.

#### Quark Expeditions 'World Voyager'

**Meals included: Breakfast; Lunch; Dinner**

Offer available for a limited time or until sold out. TRIP A DEAL PTY LTD: 50149240433

Updated: 02 Jan 2026 12:35:49

Have a question about this deal? We're here to help.  
Call our friendly team on 1300 158 912



## 15-DAY CRUISE PACKAGE | ANTARCTIC EXPLORER EXPEDITION VOYAGE

### The Itinerary

#### Day 6 South Shetland Islands and Antarctic Peninsula

The most common reaction upon reaching the 7th Continent is a sense of reverence and awe. The experience is beyond words, since few places are as untouched and enduring as Antarctica. You will begin to appreciate why this region has long captivated the attention of explorers and travellers alike. Every time people visit Antarctica, they witness something new or unexpected, which means that your expedition will be unlike any other—creating a unique, personal experience. Each day, you will take Zodiac excursions from the ship to explore glaciated bays, channels and landing sites. Your Expedition Team will take care of you at each landing, whether you are hiking the Antarctic landscape, visiting a research station or consorting with chinstrap, Adelie and Gentoo penguins, all of which can be found here. Keep an eye out for Weddell, fur, Crabeater and leopard seals as well as curious whales, such as humpbacks, minke or perhaps orcas while on a Zodiac cruise. Each excursion will present a new array of creatures to fascinate you and keep your camera busy. Amid the serene silence of Antarctica, noisy interludes become indelible memories, such as penguins squabbling over prized pebbles, or the boom and crack of a calving glacier. Every day will be different, having been carefully crafted by your Expedition Team to inspire and educate you about this wonderful part of the world.

**Quark Expeditions 'World Voyager'**

**Meals included: Breakfast; Lunch; Dinner**

#### Day 7 South Shetland Islands and Antarctic Peninsula

**Quark Expeditions 'World Voyager'**

**Meals included: Breakfast; Lunch; Dinner**

#### Day 8 South Shetland Islands and Antarctic Peninsula

**Quark Expeditions 'World Voyager'**

**Meals included: Breakfast; Lunch; Dinner**

#### Day 9 Drake Passage Crossing

The journey back across the Drake Passage provides final opportunities to enjoy the crisp Antarctic air. Spend time on the deck, watching for seabirds and scouting for whales, enjoy presentations by your Expedition Team and celebrate the experiences shared exploring Antarctica.

**Quark Expeditions 'World Voyager'**

**Meals included: Breakfast; Lunch; Dinner**

#### Day 10 Drake Passage Crossing

**Quark Expeditions 'World Voyager'**

**Meals included: Breakfast; Lunch; Dinner**

#### Day 11 Disembark Cruise Ushuaia - Buenos Aires, Argentina

You will arrive in Ushuaia in the morning and disembark after breakfast. You'll then be transferred to the airport for the return group charter flight to Buenos Aires. Upon arrival, meet your driver at the airport and transfer to your hotel. Enjoy the rest of the day at leisure.

Offer available for a limited time or until sold out. TRIP A DEAL PTY LTD: 50149240433

Updated: 02 Jan 2026 12:35:49

Have a question about this deal? We're here to help.  
Call our friendly team on 1300 158 912







## 15-DAY CRUISE PACKAGE | ANTARCTIC EXPLORER EXPEDITION VOYAGE

### The Itinerary

**Overnight:** Grand Brizo Buenos Aires or similar,  
**Meals included:** Breakfast

#### Day 12 Buenos Aires Free Day

Immerse yourself in the captivating charm of Buenos Aires today. Begin your exploration in the city's historic heart, where monumental sites like the Plaza de Mayo, the majestic Metropolitan Cathedral, and the elegant colonial Cabildo await. From there, wander through the leafy green spaces of Palermo's parks or admire the grand, French-inspired architecture of Recoleta and Retiro, which beautifully reflects the city's European influences. As dusk settles after another day exploring, dive into the vibrant local culture. Head to the bohemian neighbourhood of Barracas for an authentic evening out. You might choose to unwind with a glass of local Malbec in a traditional bar or, if you're feeling adventurous, try your hand at a few tango steps.

**Overnight:** Grand Brizo Buenos Aires or similar,  
**Meals included:** Breakfast

#### Day 13 Buenos Aires, Argentina - Australia (or New Zealand)

The time has come to begin your journey back home. At the appropriate time, meet your driver at the hotel and transfer to the airport for your flight home.

**Meals included:** Breakfast

#### Day 14 In Transit

**Meals included:** None

#### Day 15 Buenos Aires, Argentina - Australia (or New Zealand)

Welcome home, we hope you have enjoyed your trip.

**Meals included:** None



15-DAY CRUISE PACKAGE | ANTARCTIC EXPLORER EXPEDITION VOYAGE

# Tour Inclusions

## HIGHLIGHTS

- Explore highlights of the Antarctic Peninsula on an expedition voyage from South America\*
- Set foot on the great white continent with several escorted Zodiac landings and expedition activities
- Travel safely and comfortably aboard a Quark Expeditions ice-strengthened vessel, World Voyager
- Experience abundant wildlife, such as penguins, seals and whales
- Enjoy presentations on wildlife, history, glaciology & geology by the onboard polar experts
- Cross the legendary 800-kilometre Drake Passage
- Get pro tips to snap amazing photographs with the help of a professional onboard photographer
- Enjoy time at leisure to explore Buenos Aires
- \*Medical clearance is required prior to boarding for all expedition cruises to Antarctica.

## FLIGHTS

- Return international full-service flights (economy class), departure city surcharges may apply
- Return charter flights between Buenos Aires and Ushuaia, Argentina

## CRUISE

- 9-night all-inclusive Antarctica cruise with Quark Expeditions aboard World Voyager
- Experienced Expedition guides included on all shore landings and other activities
- All Zodiac transfers, shore landings and cruising as per the daily program
- All meals, snacks, soft drinks and juices on board throughout the voyage
- Complimentary beverages including coffee, tea, beer and standard wine during your voyage
- Complimentary spirits and cocktails during bar service and dinner aboard
- Complimentary Wi-Fi service on one device permitting basic internet browsing, email posting and social media and voice applications, any additional service can be purchased onboard
- Formal and informal presentations by the Expedition Team
- A photographic journal documenting your expedition
- A pair of waterproof expedition boots on loan for landings and Zodiac cruising excursions
- An official 3-in-1 Quark Expeditions® parka to keep

## ACCOMMODATION

- 3 nights of 4-star hotel accomodation in Buenos Aires, Argentina

## DINING

- 29 meals, including daily breakfast and all meals while cruising

## ESSENTIALS

- English-speaking expedition leaders
- Airline and cruises taxes, plus surcharges included

Offer available for a limited time or until sold out. TRIP A DEAL PTY LTD: 50149240433

Updated: 02 Jan 2026 12:35:49





15-DAY CRUISE PACKAGE | ANTARCTIC EXPLORER EXPEDITION VOYAGE

Tour Inclusions

TRANSFERS

All transfers included

Offer available for a limited time or until sold out. TRIP A DEAL PTY LTD: 50149240433

Updated: 02 Jan 2026 12:35:49

# Important Information

*\*Please note: All information provided in this brochure is subject to both change and availability. Prior to purchase please check the current deal for up-to-date information. If you have already purchased this deal, the terms and conditions on your Purchase Confirmation apply and take precedence over the information in this brochure.*

## Booking Information

After purchase, you will receive a receipt and a Purchase Confirmation, directing you to an online Passenger Information Form. You must complete the Passenger Information Form within 72 hours of purchase.

Any special requests, preferences and optional extras MUST be clearly stated in your Passenger Information Form. Any change requested after submitting your Passenger Information Form cannot be guaranteed, is strictly subject to availability and will incur surcharges as outlined in the Schedule of Fees below.

*Please note: All countries and territories have different entry requirements in relation to vaccinations, quarantine/isolation periods and travel restrictions. Due to the evolving nature, we would ask all of our customers to monitor, meet and adhere to the specific requirements of their intended destination(s) in the lead-up to and immediately before travel, as well as any requirements post-travel upon their return.*

## Our Policies

### Cancellation and Refund Policy

By placing a booking with us, you acknowledge the following important information:

- we act as your booking agent; TripADeal is a booking services provider, and curates the Travel Offers available on our website. We act as your booking agent, and we receive payment for the Booking Services as part of the booking price, however, we do not provide any of the Travel Services (flights, accommodation, tours or other products or services) included in your booking – the Travel Services are provided by a number of third party Travel Suppliers.

- each booking is unique; our Travel Offers are made up of a variety of different components and are, during the booking process, uniquely tailored to suit your requirements, for example, departure dates and ports, flight and room upgrades, tour inclusions, etc.
- changes/modifications to your booking may not be possible; once your booking has been made, changes or modifications may not be possible, and where possible, may incur a fee. It is important to ensure that the information you provide during the booking process is accurate and up to date, and that you read the Travel Offer carefully before placing your order.
- Travel Offers are a package; our Travel Offers have been curated into package offerings and must be used as a package – individual components cannot be used independently of the full package offering.
- our Travel Offers are generally non-refundable; in order to provide great value Travel Offers, we work with a variety of Travel Suppliers to find the best deals – this often means the Travel Suppliers' offerings are non-refundable to ensure the best price. We recommend that you obtain travel insurance as soon as you make a booking with us.

To read more about our Cancellation and Refund Policy, please [click here](#).

### General Terms and Conditions

By placing your booking with us, you acknowledge and agree to our [Terms & Conditions](#), [Privacy Policy](#) and [Cancellation Policy](#).

## Offer Essentials

This Travel Offer is valid for travel on selected dates until the 18th December 2026.

This Travel Offer is priced per person based on a twin share.

### Departure Dates & Surcharges

See checkout for live dates and availability.

### Single Traveller Supplement

For solo travellers, a mandatory single supplement applies.

Infinity Suite: \$13,500

Veranda Suite: \$14,500

*Please note: Accommodation for single customers who are travelling on a tour or cruise package may be in a single room, depending on availability.*

### Child Policy

- No child discounts are offered. The full price applies to all children travelling with their parents.
- Valid for children 8 years old and over.

*Please note: Children must be accompanied by a responsible adult 21 years old and over to travel. No unaccompanied minors are allowed.*

- Participation in adventure options is limited for guests 16 years of age or above.
- Personal mud boots, waterproof and warm outer gear, and Personal Flotation Devices may not be available in children's sizes. Please bring properly sized boots, waterproof outerwear, and a Quark Expedition Inc approved Personal Flotation Device for each child. If the child does not have appropriately sized boots or waterproof outer gear, they will not be permitted to go ashore, and one parent or guardian will need to stay onboard with the child. If the child does not have an appropriately sized Personal Flotation Device, they and their parent or guardian may be denied boarding the vessel and no refund or compensation will be given.

### Height & Weight Requirements

- Minimum weight: 29 kilograms
- Minimum height: 1.2 metres

## Flights

### Departure Cities

Sydney, Melbourne, \*Brisbane, \*Adelaide, \*Perth, \*Auckland

### Departure City Surcharges

Brisbane: \$200 per person  
Adelaide: \$400 per person  
Perth: \$700 per person  
Auckland: \$300 per person



# Important Information

## International Flight(s)

### Full-service airline(s) used

- Cabin Class: Economy Class

*Please note: We cannot accommodate one-way flights. Travellers must take all included flights within the package, and any flights intentionally forfeited will result in later flights being subject to cancellation.*

### Domestic Flight(s) Used

- Cabin Class: Economy Class

### Route

- Buenos Aires to Ushuaia
- Ushuaia to Buenos Aires

## Domestic Flight Information

Baggage allowance per person:

- 1 x 23kg of checked baggage
- 1 x 8kg of carry on baggage

## Preferred Airline Surcharge

- Not available

## Arrive Early and Stay Behind Options

### Arrive Early

Buenos Aires - From \$300 per person, subject to availability.

### Stay Behind

Buenos Aires - From \$300 per person, subject to availability.

### *Please note:*

- *This fee does not include extra nights' accommodation, meals or airport transfers.*
- *Flight booking changes or cancellations after air tickets have been issued are not guaranteed and may incur additional fees and fare difference, subject to the airline cancellation and change policies.*
- *Flight changes are subject to availability at the time of booking.*
- *A high-season Arrive Early or Stay Behind can be purchased for an additional charge, subject to availability. For pricing, please refer to the cart.*

- *You can arrive early, up to 60 days before your package's start date, and/or stay behind until 60 days after your package's end date. Should you wish to arrive earlier or stay behind for more than 60 days, please contact us to request availability. Additional costs may apply.*

- *High season surcharges apply to flights departing between the below date ranges:*

- *15th September 2025 - 12th October 2025*
- *1st December 2025 - 19th December 2025*
- *20th December 2025 - 4th January 2026*
- *5th January 2026 - 31st January 2026*
- *3rd April 2026 - 20th April 2026*
- *26th June 2026 - 17th July 2026*
- *18th September 2026 - 9th October 2026*
- *12th December 2026 - 18th December 2026*
- *19th December 2026 - 3rd January 2027*
- *4th January 2027 - 26th January 2027*

## Stopover Packages

\* Santiago, Chile

Includes:

- 2, 3 or 5 nights in 4-star accommodation
- Daily breakfast
- Return airport transfers

For pricing, please refer to the payment cart at checkout.

### *Please note:*

- *When a pre and post-tour stopover is chosen, the same stopover location must be chosen each way, due to the airline used.*
- *When selecting an Arrive Early or Stay Behind in conjunction with a Stopover Package, the stopover will take place after the departure date you select for your Arrive Early or Stay Behind.*
- *Stopover packages are subject to availability.*
- *In the event that a purchased stopover package and a purchased preferred airline upgrade are not compatible, you will have the option to receive a refund for the preferred airline upgrade or be offered an alternative stopover city option, e.g if you choose to fly with Singapore Airlines you cannot stopover in Dubai.*

- *Blackout dates apply to flights departing between the below date ranges:*

- *2026*

Christmas and New Years Eve - 18 December 2026 to 3 January 2027

## Flight Class Upgrades

Business Class: For pricing, please refer to the payment cart at checkout.

### *Please note:*

- *Flight upgrades are subject to availability and pricing changes (if we cannot fulfil your request, the upgrade cost will be refunded).*
- *On any upgrade purchase, short-haul flights and domestic flight sectors are not guaranteed, subject to aircraft configuration.*

## Outbound Flights

*Please note: Due to flight scheduling and availability, some departures may occur on Day 0. Affected customers must be available to depart the day before. Flight times will be indicated on your final documents, issued 4-6 weeks before departure.*

## Missed Flights

If you fail to arrive for your outbound flight, you risk all flight and land arrangements in your destination being automatically cancelled by the airlines and land operator, respectively. Additional fees may apply to reinstate these services. If you miss your flight for whatever reason, please contact us as soon as possible to make arrangements.

## Cruise

### Medical Disclaimer

Travel to Antarctica is physically demanding, and Travel Suppliers require all guests to obtain medical clearance before departure even if you don't intend to disembark at Antarctica. This involves completing a medical form and may require medical clearance from a doctor, which could incur additional costs. Any guests who fail to provide the necessary medical documentation will be denied boarding.

# Important Information

## Quark Expeditions' World Voyager

The World Voyager is a modern, purpose-built expedition vessel designed to provide a luxurious and immersive experience in the polar regions. It combines advanced technology with a focus on guest comfort and education, making it an ideal choice for a sophisticated polar adventure.

## Ship & Guest Specifications

**Capacity:** The ship accommodates a small number of guests, typically 168 passengers, and is operated by a crew of 125. This high staff-to-guest ratio ensures exceptional, personalised service.

**Size:** The vessel is 126 meters long, making it nimble enough for deep polar exploration while providing a stable and comfortable ride. It has an ice-class rating of 1B, signifying its capability to navigate icy waters.

## Onboard Facilities & Amenities

### All-suite, all-balcony accommodations

: Every suite on the World Voyager features a private walk-out or French balcony, giving every guest a direct, personal connection to the stunning polar landscapes. Cabins are spacious and feature a modern "infotainment" system.

### Dining and lounges

: The ship has a single, elegant dining room, offering globally inspired cuisine. For casual dining, guests can visit 7-AFT Grill. Public spaces include the glass-domed Observation Lounge with panoramic views, and the Explorer Lounge, perfect for relaxing and socialising.

### Wellness & recreation

: The ship places a strong emphasis on wellness. Guests have access to a gym, a sauna with a view of the ocean, a Tundra Spa for treatments (charges apply), a heated outdoor swimming pool, and two Jacuzzis. There is also an outdoor running track on the upper deck.

### Educational hub

: The Science Hub is a unique feature where guests can interact with onboard

scientists and expedition guides. The main theatre serves as the central location for a rich program of lectures and presentations on topics like glaciology, wildlife, and polar history.

## Activities in Antarctica

While on a Quark Expeditions voyage in Antarctica, guests can expect a blend of included activities and optional add-ons designed for deep immersion:

### Zodiac Cruising

: The primary method for off-ship exploration, Zodiacs are used for shore landings and cruising among icebergs and wildlife, allowing for close-up encounters with penguins, seals, and whales. The ship has a dedicated Ready Room for easy preparation and embarkation.

### Hiking & Walking

: Organised hikes range from leisurely walks over spongy tundra to more challenging treks over snow and rock, tailored to different fitness levels. Guests are provided with a Quark Expeditions parka and muck boots for the duration of their journey.

### Polar Plunge

: A classic polar rite of passage, guests can take an exhilarating dip into the icy Antarctic waters under the supervision of the Expedition Team.

## Optional Adventure Activities:

For an additional cost, guests can choose from an array of more adventurous activities, including:

- Kayaking and Paddling Excursions: Get a unique, water-level perspective of the polar environment.
- Camping: Brave guests can spend a night sleeping under the Antarctic sky in a specialised sleeping bag.

## Onboard currency:

USD\$

## Cabins/Staterooms:

### Infinity Suite:

Located on Decks 5 and 6, and

approximately 25 m<sup>2</sup> in size, these cabins have one double or two single beds, and a floor-to-ceiling glass Juliet balcony. A sitting area with sofa, refrigerator, TV, state of the art "infotainment" system, and private bathroom with shower is also featured in each cabin.

### Veranda Suite:

Located on Decks 5 and 6, and approximately 20 m<sup>2</sup> in size, these cabins have one double or two single beds, and a 5 m<sup>2</sup> walk-out balcony. A sitting area with sofa, refrigerator, TV, state of the art "infotainment" system, and private bathroom with shower is also featured in each cabin.

### *Please note:*

- *All cabins are subject to availability; some cabins may have restricted views.*
- *Cruise cabins are booked on a guaranteed basis and are assigned by the cruise line prior to departure.*

## What To Pack For Your Antarctica Expedition

Packing for Antarctica doesn't have to be daunting. The following list will help you prepare optimally for your polar adventure of a lifetime. To make it easier for you, all Quark Expeditions voyages to Antarctica include a complimentary Quark 3-in-1 Parka (with a waterproof outer shell and a removable inner liner to adjust to the activity at hand and your personal thermo-regulation needs, as required), a collapsible reusable water bottle, and a loan of insulated waterproof boots.

1. Waterproof Pants (mandatory for every Zodiac landing. You will also be required to wear a drysuit, which our team will help you prepare for on the ship)
2. Base-layer wool or synthetic top\*
3. Base-layer wool or synthetic bottom\*
4. Mid-layer warm or fleece top\*
5. Mid-layer warm or fleece bottom\*
6. Warm wool or synthetic socks (keep a dry pair in your bag, and bring extras for layering)
7. Glove liners \*
8. Hand and feet warmers\*
9. Binoculars



# Important Information

10. Waterproof gloves or mitts (bring an extra pair)
11. Scarf, buff, or other face protection
12. Warm hat that covers ears (bring an extra)
13. Waterproof, lightweight backpack or dry sack &/or rain sleeve for camera or a waterproof phone case (to keep camera & gear dry)
14. Polarized sunglasses with UV protection (consider bringing an eyewear retainer: string/clip etc.)
15. Ski goggles (for Zodiac cruising on snowy or windy days)
16. UV protection (sun hat, polarized sun glasses, sun block, lip balm etc.)
17. Collapsible Walking stick for hikes (if required). Quantities are available on every vessel to borrow.

\* Recommended layering depending on the conditions of the day and reflecting your personal thermo-regulation comfort levels

## To Wear Onboard

1. The complimentary Quark 3-in-1 Parka provided on board is designed with a waterproof shell that can be worn out on deck, and a removable liner that you can wear to stay comfortable indoors.
2. Comfortable casual clothing like lighter shirts, pants or jeans, etc. (in case the ship gets warm)
3. Comfortable non-slip closed-toed, heelless shoes (flip flops, sandals or slip-on shoes should not be worn on board due to safety concerns)
4. Workout attire (for the fitness center!)
5. Swimsuit (for the Polar Plunge or for use in the sauna. See your ship book for details.)

Just a reminder: No formal evening wear required on our voyages but if you would like to bring something a little more dressy for the Captain's welcome and farewell cocktails you may certainly do so.

**Additional Items**

1. Passport, visas, immunisation records, travel documents, etc. as required
2. Camera gear complete with charger, storage medium, transport & cleaning kit (lens cloth etc.) and extra batteries
3. Waterproof cell phone case or rain sleeve for camera

4. Earplugs and eye masks for sleeping
5. Voltage converters and plug adapters
6. Moisturizer for face and hands (skin dryness due to wind and temperature changes)
7. Seasickness, indigestion, headache, or other medications
8. Small amount of local currency (see pre-departure book for more details)
9. Additional reusable thermos or water bottle (a collapsible reusable water bottle will be provided onboard)

## **Cruise Arrival and Departure Times:**

Please keep in mind that the provided cruise arrival and departure times are an approximate and will be finalised upon receipt of your cruise tickets.

## **Embarkation / Disembarkation:**

- Begins approximately 2 hours after docking.
- Due to security reasons, all guests must be on board 2 hours before sailing.
- Itineraries are subject to change at any time without notice.
- Check your specific sailing for exact departure and arrival times. All times are local to the port.

*Please note: Strict Covid-19 terms may also apply regarding proof of insurance covering Covid-19 and/or vaccination. Please refer to the cruise lines' terms and conditions for further information before boarding.*

## **Cruise Loyalty Discounts:**

*Please note: Travellers must contact the cruise line directly upon receiving their travel documents in order to request any membership benefits they may be entitled to.*

## **Accommodation**

### **Accommodation Used:**

#### 4-star Properties (Self-Rated)

Buenos Aires, Argentina: Grand Brizo Buenos Aires

*Please note: Accommodation/rooms offered are based on a lead-in room type and are subject to availability based on seasonality. In the instance a property is not available, a similar standard of accommodation will be*

*provided. Properties will be confirmed and included in your travel pack, which you will receive 4-6 weeks before travel.*

## **Extra Nights**

Not available.

*Please note: If you are interested in booking additional nights of accommodation pre or post-tour, please wait until you receive your travel documentation approximately 4-6 weeks before departure for the confirmed list of hotels. If booking your own additional accommodation directly with the hotel, please be aware that you may be required to change rooms at the start/end of your tour.*

## **Maximum Room Capacity**

2 people.

## **Triple Share**

Not available.

## **Bedding Configuration**

Twin or double (subject to availability).

## **Wildlife**

TripADeal cannot guarantee animal sightings. Wildlife are unpredictable and factors such as weather conditions, predatory fear and animal movements can impact sightings.

## **Optional Tours/activities**

- Paddling Excursion: \$395 per person
- Stand-up Paddle-boarding: \$395 per person
- Sea Kayaking: \$1,995 per person
- Camping on Antarctica: \$495 per person
- The optional tours listed above must be purchased on checkout or over the phone (subject to availability).

## **Wildlife**

TripADeal cannot guarantee animal sightings. Wildlife are unpredictable and factors such as weather conditions, predatory fear and animal movements can impact sightings.

- Some tours or shore excursions require minimum numbers to operate.

# Important Information

- Shore excursions can also be booked whilst onboard (subject to availability).

## Wildlife

TripADeal cannot guarantee animal sightings. Wildlife are unpredictable and factors such as weather conditions, predatory fear and animal movements can impact sightings.

- Shore excursion programmes and itineraries may vary depending on local conditions and/or any unforeseen events concerning the timing on the day of the tour. Some excursions are very popular, and therefore availability cannot always be guaranteed, it is advisable to book in advance to avoid disappointment.

Camping in Antarctica - Other recommended gear:

- Base and mid-layer clothing
- Warm hat
- Warm gloves
- Hand-warmers
- Camera and accessories
- Backpack
- Eye mask if you wish complete darkness
- Need a pillow? Roll up your parka!
- Essential medication and or supplements

## Exclusions

- Visa fees and requirements
- Domestic transfers and flights not stated in the deal offer
- Meals/beverages not stated in the deal offer
- Optional gratuities/tipping
- Optional activities/tours
- Personal expenses
- Travel insurance
- Any costs associated with an interruption to your tour as a result of an airline schedule change or cancellation
- Mandatory city tax

## Gratuities / Tipping

*Please note: Tipping for services provided is always a matter of personal discretion; however, please be aware that many locals consider tipping part of their normal remuneration, and they may approach you*

*for payment; there's no need to be intimidated by the request.*

## Cruise

Quark Expeditions understand whatever amount you give is at your own discretion. As a guideline, it is suggested the amount of USD\$15 to USD\$25 per traveler per day. At the end of the voyage you will have the option to charge a gratuity amount to your onboard account, or to place cash in an envelope. Gratuities are shared among the hotel and expedition team members.

## Other Important Information

### TOUR GUIDE VS. TOUR LEADER

#### Tour Guide:

Often locals with intimate knowledge of an area, its culture, and history. Their role entails providing commentary, routing the tour, and seeing that people have a good time. They are a licensed, qualified expert who supplies specific information on the history, art, architecture and culture of the city/village/attraction where they are guiding the tour. The guide meets the group at the required place and leaves it at the end of the tour; they do not travel with the group.

#### Tour Leader:

An experienced person tasked with ensuring the smooth operation of tours, as well as providing practical support to passengers throughout the whole trip. Their role primarily includes assisting with accommodation, transportation between locations, and communication with tour guides at each stop. A tour leader may provide general guidance around a city or village and offer information on the place visited on the bus. However, they are not required to have specific art, architecture, or historical knowledge. They are not allowed to provide a guided tour or commentary of a city/village/attraction once there and, if caught doing so, can be fined.

*Please note: Tour leaders/guides are not a standard inclusion in all travel offers. Tour leaders/guides will only be made available*

*when required to enhance the experience of the destination featured.*

## CLIMATE & AVERAGE TEMPERATURES

### Buenos Aires

In November, Buenos Aires transitions from spring to early summer, with average daily temperatures ranging from a low of 16°C to a high of 25°C, making for a very pleasant climate with rising humidity. As summer begins in December, the weather becomes warmer and more humid, with average high temperatures reaching 28°C and lows around 18°C. This period marks the start of the summer season, characterized by more heat and a greater chance of thunderstorms.

### Antarctica

Antarctica's weather in November and December is highly variable, but for those traveling to the Antarctic Peninsula, it's the start of the summer season and the most hospitable time of year. In November, which is considered late spring, temperatures typically average between -2°C to -4°C, with the landscape still heavily covered in pristine snow and ice. As December ushers in the peak of summer, temperatures rise, often hovering around the freezing point, with average highs of 1°C and lows of -2°C. While this is the "warmest" time, conditions can change rapidly, with chances of wind and snowfall. A key feature of this period is the near-constant daylight, with up to 24 hours of sun in December, providing ample time for exploration.

### Weather

We always suggest referring to an online source for the most up-to-date weather information for your destination/s.

## FLIGHTS

### Seat Selection & Frequent Flyer Points:

We do not arrange seat selection. It is essential to highlight that some airlines do not allow pre-selected seats. We strongly suggest you contact the airline directly with seating allocation requirements and/



# Important Information

or arrive at the airport earlier to arrange your seating. While we do not add frequent flyer member details to bookings, you can do this directly with the airline once you have your flight information.

## Passport Validity:

Customers must provide valid passport details either at the time of purchase or no later than 90 days before the departure date. Failure to do so may result in the cancellation of the booking. Customers will be responsible for any costs and fees incurred in this instance.

## Meals:

For meals not included, the tour leader (when available) will offer assistance with reservations, suggestions and directions to local restaurants. It is your responsibility to notify us of any dietary requests/requirements.

*Please note: We will do our best to meet your requests/requirements; however, we cannot guarantee that we will always be able to.*

## Luggage:

You will be responsible for all your personal belongings whilst on tour. You must carry your own luggage from the vehicle to the hotel room and back to the vehicle. The driver will assist with the uploading and unloading of bags from the vehicle.

## OTHER

## Mobility:

If you require wheelchair access please contact our friendly sales and service team to inquire on your behalf.

## Fitness Level Required:

Adventure (and spontaneity) create some of the best travel memories. Bear in mind, your home schedules and timings might not be adhered to on tour - it's all part of the fun!

A Moderate level of fitness will be required.

Expect a moderate pace of touring with a focus on guided tours that may include full

days with extended activity, guided city tours or nature walks. You will require a general level of fitness for unassisted navigation of stairs and inclines, longer distances with possible periods of standing when visiting sites, walking on sloping, uneven ground or elevations. You will be responsible for your own luggage and have the ability to board all modes of transport without assistance. Please note: Many areas may be inaccessible to wheelchairs or mobility scooters, where the unassisted use of personal walking sticks and other aids may be required. Although some assistance may be available, every traveller should be self-reliant during all aspects of their travel.

*Please note: It is expected that every traveller must be self-reliant and able to undertake all aspects of their own travel. Please speak to your booking agent about your personal circumstances and any assistance requirements to ensure this tour is right for you.*

*Please note: If you have any concerns, please consult your healthcare provider prior to purchase/travel.*

## Yellow Fever:

A valid international certificate of vaccination against Yellow Fever is required in many countries. You may need to present this on arrival at the airport or border crossing. Some countries will refuse entry if you are unable to present your certificate. It's also common for your home country to request a Yellow Fever certificate upon arrival.

You must check with your doctor well before leaving home about the Yellow Fever requirements for the countries you'll be visiting.

## Sightseeing:

*Please note: If entry to a site is affected by changes in operating hours or public holiday closures, your itinerary, where possible, may be adjusted, or a similar activity will be offered in its place (subject to availability).*

## Wildlife

TripADeal cannot guarantee animal

sightings. Wildlife are unpredictable and factors such as weather conditions, predatory fear and animal movements can impact sightings.

## Shopping:

Shopping overseas can be a daunting and confusing experience, especially when there is a language barrier. Please be very cautious when foreign currencies and prices are involved. If paying by credit card, please pay close attention to the amount you are being charged and keep all your receipts.

Do not make any purchases you are not comfortable with or feel pressured into. If you are uncertain or need assistance with the language barrier, please seek assistance from your Tour Guide/Leader. Please refer to our [Terms and Conditions](#) regarding shopping for further information.

## Visas

### Argentina

A tourist visa for Argentina is no longer required if travelling on an Australian Passport. Passengers must hold a passport valid at least six months on entry with one blank visa page.

*Please note: Effective immediately, all international travellers to Argentina must hold valid travel insurance with medical coverage. This insurance may be requested and verified upon arrival in the country. Argentina's public healthcare system will no longer provide free medical services to foreign nationals. It is therefore essential that you obtain appropriate insurance before your departure.*

### Chile

As of 17th September 2025 tourist visas for Chile are not required if travelling on an Australian Passport. You can stay in Chile for up to 90 days without a visa. If you're unsure whether you need a visa, contact the nearest [embassy or consulate of Chile](#).

## Important:

- *Please start arranging your visa three weeks before departure to account for any delays due to consulate operating hours.*

# Important Information

- *Visa rules are subject to change. Please check with the nearest embassy, consulate or immigration department of the destination/s you are visiting once you receive your travel documentation to ensure you have the most up to date information.*
  - *It is your responsibility to be travel-ready and ensure that you are aware and comply with any destination or travel requirements, including the validity of all required travel documents.*
  - *Passengers who are not Australian citizens must also check with the respective consulate or visa agency to determine what their visa requirements are and what personal identification is required.*
  - *It is also important to note that some areas of employment, such as journalism, government authorities and charity organisations, may have additional restrictions in applying for visas. This may, in turn, affect the type of application required.*
- If the incorrect name has been provided, charges of \$100 per booking and any additional charges applied by the airline/ cruise company/accommodation/other travel providers.

## Supplier Fees

In the event the tour package you have purchased is unable to proceed, and/or a Travel Supplier is unable to fulfil the tour due to external circumstances (Limitation of Liability e.g. a Force Majeure event), there may be a fee or amount of money that is withheld by our Suppliers and is unrecoverable. This may be due to non-refundable airline tickets, cancellation penalties with cruise cabins or unrecoverable payments with our land/accommodation partners. If refunds are not available from Suppliers, we will endeavour to obtain a travel credit on the best terms available and communicate these outcomes to you. In the event we are unable to obtain a refund or travel service credit, or part thereof, this cost is passed on to the customer as a Supplier Fee.

## Travel Insurance

Embarking on your next trip is exciting, and while you hope the unexpected does not happen, it is best to be prepared. We strongly recommend you take out travel insurance when making your booking. Whether it's a potential medical emergency, a flight cancellation, a delayed suitcase, or an unforeseen event, it's important to ensure you're adequately protected. For more information or advice visit <https://www.tripadeal.com.au/travel-insurance>

## Schedule Of Fees

### Voluntary Changes

This includes booking changes requested by you, including but not limited to those changes requiring an airline ticket or a Purchase Confirmation reissue.

- Changes - \$100 per booking and any additional charges applied by the airline/ cruise company/accommodation/other travel providers.

### Name Changes Due To Passenger Error