

A large, scenic photograph of an Antarctic landscape. In the foreground, a large, white ice floe floats in the water. A leopard seal is resting on the ice floe, its head and front flippers visible. In the background, there are snow-capped mountains and a body of water under a clear blue sky.

Antarctica, South Georgia & Falklands

SEABOURN VENTURE • SEABOURN PURSUIT

The Offer

Join a 26-day bucket-list expedition to Antarctica, South Georgia and the Falkland Islands. Begin your journey in Buenos Aires, Argentina, before flying south to Ushuaia. Embark aboard Seabourn Venture or Seabourn Pursuit for a 5-star luxury experience to the world's most pristine and remote destinations. Return to Ushuaia, then enjoy days at leisure in Buenos Aires before your flight home.

Fly to Argentina's capital, Buenos Aires, to relax for the evening before catching a charter flight to Ushuaia, one of the world's southernmost cities. Embark on Seabourn's ultra-luxury Seabourn Venture or Seabourn Pursuit, toasting to adventure with complimentary champagne and caviar, attentive service, spacious balcony staterooms, world-class restaurants, live music, entertainment and more.

Get ready for guided Zodiac discoveries with the expedition team as you cruise among Antarctica's frozen marine landscapes. These icy shores, glaciers and towering icebergs are home to feisty Gentoo penguins, leopard seals alongside pods of orca and humpback whales. Continue to South Georgia's wildlife oasis in search of King penguins, galumphing elephant seals and watching the skies for the magnificent wandering albatross. Sail on through

subantarctic seas to walk in the footsteps of explorers on the Falkland's windswept islands, anticipating the curious and playful antics of Rockhopper, Magellanic and Macaroni penguins.

Disembark in Ushuaia and fly to Buenos Aires, ready to explore this exciting city before your flight home.

This unforgettable cruise package includes return international full-service flights, a return charter flight, a 20-night 5-star luxury Seabourn voyage, 4-nights of 5-star accommodation, 61 meals, including all while cruising, and more.

Take your Seabourn experience to the next level with a stateroom upgrade. Extend the adventure with Arrive Early and Stay Behind options available.

Offer available for a limited time or until sold out. TRIP A DEAL PTY LTD: 50149240433

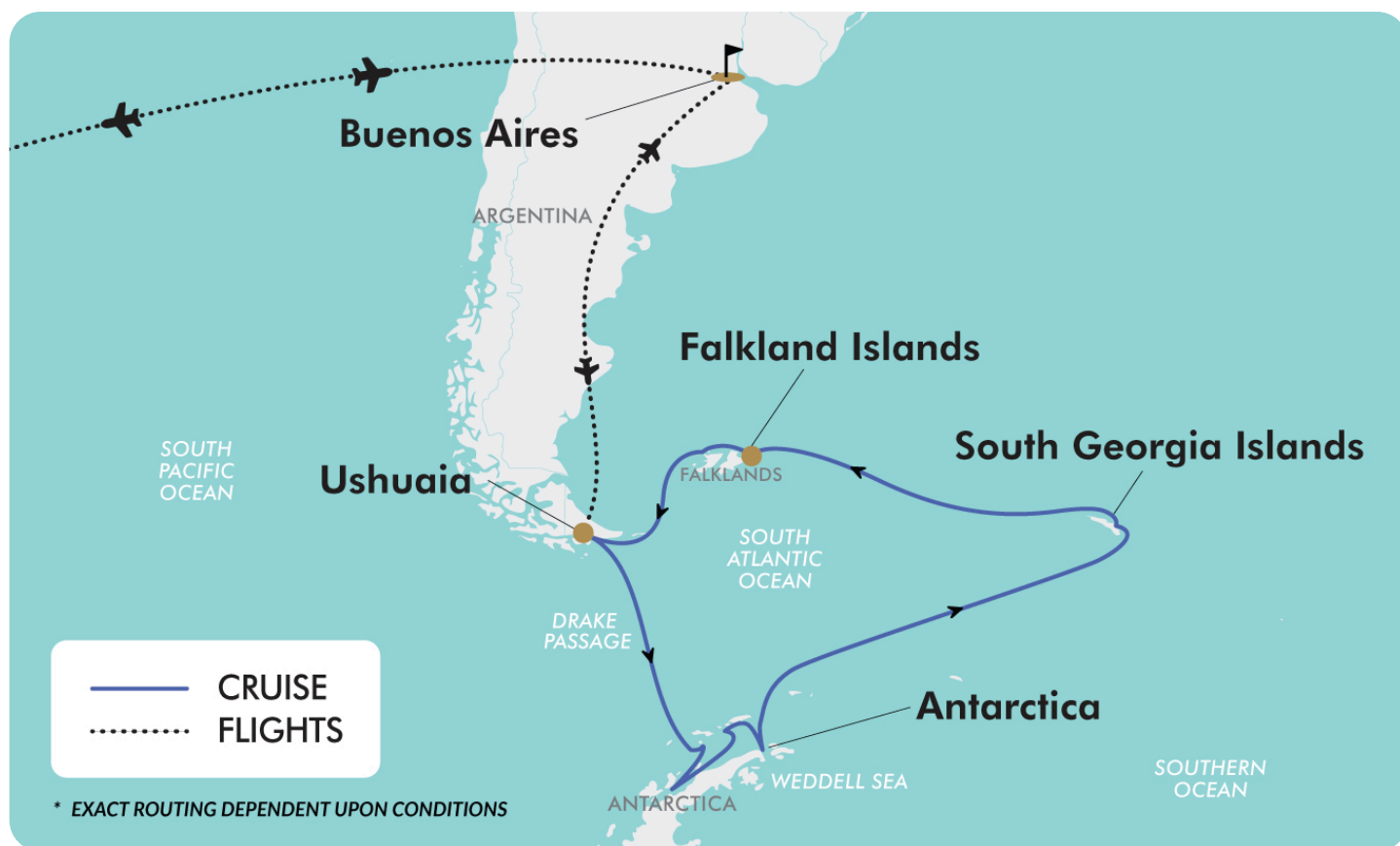
Updated: 14 Jan 2026 10:43:42

Have a question about this deal? We're here to help.
Call our friendly team on 1300 158 912



26-DAY CRUISE PACKAGE | ANTARCTICA, SOUTH GEORGIA & FALKLANDS

The Map



Offer available for a limited time or until sold out. TRIP A DEAL PTY LTD: 50149240433

Updated: 14 Jan 2026 10:43:42

Have a question about this deal? We're here to help.
Call our friendly team on 1300 158 912



26-DAY CRUISE PACKAGE | ANTARCTICA, SOUTH GEORGIA & FALKLANDS

The Itinerary

Day 1 Fly Australia (or New Zealand) - Buenos Aires, Argentina

Today make your own way to the airport for a flight to Buenos Aires, Argentina. Upon arrival an arranged Seabourn transfer will escort you to your hotel. Once checked in the remainder of your day is at leisure.

In 1580, Spanish explorer Juan de Garay planted the seeds of what would become Buenos Aires. Today, it flourishes as the captivating capital of Argentina and a cosmopolitan metropolis that elegantly straddles two worlds.

Often hailed as the "Paris of South America," Buenos Aires enchants with its blend of European elegance and Latin American vibrancy. As a sister city to global hubs like Moscow and Miami, Buenos Aires wears its rich cultural heritage on its sleeve, and its architectural diversity is a testament to a past deeply rooted in both the Old and New Worlds, offering a visual narrative that spans centuries and continents.

Overnight: Alvear Palace Hotel Buenos Aires, or similar
Meals included: In-Flight

Day 2 Buenos Aires, Argentina - Ushuaia, Argentina - embark Seabourn Venture or Seabourn Pursuit

After check-out this morning an arranged Seabourn transfer will take you to the airport to catch a charter flight to Ushuaia, Argentina. Upon arrival a Seabourn transfer will take you to the port to board the luxurious Seabourn Venture or Seabourn Pursuit. Once on board the remainder of the day is at leisure exploring an amazing ship.

Ushuaia:

Once deemed too harsh for European settlement, Ushuaia's rugged beauty was the realm of its native inhabitants - the Yahgan People. Today, it holds the distinctive title of being the southernmost city on Earth, often referred to as "the end of the world." Situated along the banks of the Beagle Channel, Ushuaia unveils itself like an artist's masterpiece. A mosaic of vibrant houses adds a splash of colour against the dramatic backdrop of snow-capped mountains. Dominating this breathtaking panorama is Monte Olivia, its jagged peaks soaring 4,530 feet above the landscape.

The terrain transforms from dense forests of Southern beech trees at sea level to alpine ecosystems as you ascend. Thanks to its strategic location and proximity to the Antarctic Peninsula, Ushuaia has earned its status as the gateway to the Great White Continent. Yet, Ushuaia is more than just a stepping stone to Antarctica. It's a treasure trove of natural history, indigenous heritage, and the spirit of exploration. From embarking on awe-inspiring treks in the nearby Tierra del Fuego National Park to delving into the rich narratives at "The End of the World" museum, Ushuaia promises a plethora of experiences that cater to the curious and the adventurous alike.

Seabourn's Seabourn Venture or Seabourn Pursuit
Meals included: Dinner

Day 3 Cruising

Time to indulge in all that Seabourn Venture or Seabourn Pursuit has to offer. With a world-class 24 person expedition team on board, consisting of a select group of academics, scientists, and general naturalists, to embark on immersive experiences and guide guests on a journey of a lifetime.

Offer available for a limited time or until sold out. TRIP A DEAL PTY LTD: 50149240433

Updated: 14 Jan 2026 10:43:42

Have a question about this deal? We're here to help.
Call our friendly team on 1300 158 912





26-DAY CRUISE PACKAGE | ANTARCTICA, SOUTH GEORGIA & FALKLANDS

The Itinerary

These expedition ships are an ultra luxury purpose built vessel with a PC6 ice-strengthened hull; advanced manoeuvring technology for superior stability, safety and comfort. They have more than 30,000 square feet of spacious open deck space for optimal nature and wildlife viewing. These ships also have imagery on monitors located throughout that can broadcast from up to 3 miles away. Time to also experience Seabourn's signature events: Caviar on ice, Polar Plunge and more.

Seabourn's Seabourn Venture or Seabourn Pursuit
Meals included: Breakfast; Lunch; Dinner

Day 4 Cruising

An open bridge provides first hand access to the ship's command centre and officers navigating your journey. Experience daily enrichment with expert-led "Fireside Chats", daily recipes and briefings, lectures, and Seabourn conversations, plus a multi-functional interactive virtual bridge.

Seabourn's Seabourn Venture or Seabourn Pursuit
Meals included: Breakfast; Lunch; Dinner

Day 5 Antarctic Experience

Experience Antarctica in all its majesty. Nothing quite prepares you for it. Surrounded by looming glaciers and icebergs the size of floating cathedrals, Antarctica will fill you with wonder.

Perhaps the most surprising part of Antarctica is the silence. It's a stillness that's broken every so often by the locals – the wildlife. In the Antarctic summer, that might be penguins tending to their chicks, cormorants, sheathbills and petrels wheeling through the

skies, or even orcas or humpback whales feeding on the krill-rich waters. Antarctica is simply a place where nature is king and the rest of us are mere observers.

Seabourn's Seabourn Venture or Seabourn Pursuit
Meals included: Breakfast; Lunch; Dinner

Day 6 Antarctic Experience

Nestled amidst the awe-inspiring glaciers, colossal icebergs and snow-clad islands, the Antarctic Peninsula stands as the quintessential backdrop for any Antarctic expedition. It's here that most visitors to the White Continent find themselves living out their ultimate polar adventure. This region, the most readily-accessible part of Antarctica, not only accommodates various scientific research bases but also showcases some of the planet's most captivating wildlife vistas.

Depending on weather, ice conditions and reported wildlife distribution during your voyage, your captain and expedition team will program an additional day of discovery and adventure for you in Antarctica.

Seabourn's Seabourn Venture or Seabourn Pursuit
Meals included: Breakfast; Lunch; Dinner

Day 7 Antarctic Experience

Seabourn's Seabourn Venture or Seabourn Pursuit
Meals included: Breakfast; Lunch; Dinner

Day 8 Antarctic Experience



26-DAY CRUISE PACKAGE | ANTARCTICA, SOUTH GEORGIA & FALKLANDS

The Itinerary

Seabourn's Seabourn Venture or Seabourn Pursuit
Meals included: Breakfast; Lunch; Dinner

Day 9 Antarctic Experience

Seabourn's Seabourn Venture or Seabourn Pursuit
Meals included: Breakfast; Lunch; Dinner

Day 10 Antarctic Experience

Seabourn's Seabourn Venture or Seabourn Pursuit
Meals included: Breakfast; Lunch; Dinner

Day 11 Cruising

Today you might like to experience in-suite-dining offering around the clock service. Dinner from The Restaurant menu is served, course by course, in your suite or on your veranda.

Seabourn's Seabourn Venture or Seabourn Pursuit
Meals included: Breakfast; Lunch; Dinner

Day 12 Cruising

Seabourn's Seabourn Venture or Seabourn Pursuit
Meals included: Breakfast; Lunch; Dinner

Day 13 The Seabourn South Georgia experience

The remote South Georgia Islands are one of the least visited destinations on earth. It consists of South Georgia Island and smaller surrounding islands and rocks. Largely untouched and blessed with a sub-Antarctic climate and nutrient-rich seas, it represents a sort of Lost Eden of unspoiled wildlife habitat. Although ice and snow are present, they are strikingly green with vegetation as compared with Antarctica. The islands are twmming with wildlife, including massive populations of king and other penguin species, fur seals, elephant seals, albatrosses, giant petrels, and other seabirds. Whales, orcas and dolphins abound offshore in the most diverse marine ecosystem on earth.

Your captain and expedition leader will plan your days in South Georgia to offer a variety of experiences in this remote and enchanting destination, based on conditions and wildlife reports. These will certainly include visits to historic communities such as Grytviken, with its memorial to Ernest Shackleton, the immense breeding colony of king penguins on the Salisbury Plain and other highlights, along with less well-known, but equally unforgettable sites. Your veteran expedition team members enrich your experience during presentations and in casual conversations and interpret passing sights during time spent cruising. They will also accompany you on landings at the various sites and excursions in Zodiacs and kayaks.

Seabourn's Seabourn Venture or Seabourn Pursuit
Meals included: Breakfast; Lunch; Dinner

Day 14 The Seabourn South Georgia experience

Offer available for a limited time or until sold out. TRIP A DEAL PTY LTD: 50149240433

Updated: 14 Jan 2026 10:43:42

Have a question about this deal? We're here to help.
Call our friendly team on 1300 158 912





26-DAY CRUISE PACKAGE | ANTARCTICA, SOUTH GEORGIA & FALKLANDS

The Itinerary

Seabourn's Seabourn Venture or Seabourn Pursuit
Meals included: Breakfast; Lunch; Dinner

Day 15 The Seabourn South Georgia experience

Seabourn's Seabourn Venture or Seabourn Pursuit
Meals included: Breakfast; Lunch; Dinner

Day 16 Cruising

Learn about this region's pristine environment and benefit from insightful lectures, briefings, and Seabourn Conversations enrichment programs throughout your expedition experience. Enjoy the camaraderie of Seabourn Square, and the Card Room is a great choice for cruisers who crave that languorous feeling of lazy leisure.

Or indulge in a spa treatment at Seabourn's Wellness and Spa. Each Seabourn ship's Mindful Living Coach is a certified yoga and meditation practitioner who will inspire and educate guests with orientations, seminars and classes during the voyage for a holistic mind and body perspective, charges apply.

Seabourn's Seabourn Venture or Seabourn Pursuit
Meals included: Breakfast; Lunch; Dinner

Day 17 Cruising

Audio-visual experiences come to life through high-definition screens 2.5 metres high by 10 metres wide, showing a variety of programming and captivating experiences that create anticipation and excitement for each destination. Footage from submarine voyages will also be shown, providing an enticing look at the undersea world and the marine life that calls it home.

Seabourn's Seabourn Venture or Seabourn Pursuit
Meals included: Breakfast; Lunch; Dinner

Day 18 The Seabourn Falkland Island experience

There is nowhere else in the world like the Falkland Islands. This archipelago is a remote, wind-swept place of stunning landscapes, dazzling white sand beaches, magnificent wildlife, and a rather gregarious mix of people.

Over 200 islands surround the two main islands of West and East Falkland. These isolated and treeless shores are home to an overwhelming abundance of birdlife including albatross, penguins, caracaras, geese and many others.

Perhaps it was the very remoteness of the islands, the allure of its barren landscapes, pure in their austerity and colourful in their details, and the immensely large open skies that attracted settlers to its shores long ago. These islands have accumulated a wealth of maritime and military history, including more than three hundred shipwrecks and memorials of the recent war between British and Argentine forces in 1982. Numerous claims for the islands have been put forward in the course of their history. Nowadays the Falkland Islands are a self-governing British Overseas Territory.

Seabourn's Seabourn Venture or Seabourn Pursuit
Meals included: Breakfast; Lunch; Dinner

Day 19 The Seabourn Falkland Island experience

Seabourn's Seabourn Venture or Seabourn Pursuit
Meals included: Breakfast; Lunch; Dinner

Offer available for a limited time or until sold out. TRIP A DEAL PTY LTD: 50149240433

Updated: 14 Jan 2026 10:43:42

Have a question about this deal? We're here to help.
Call our friendly team on 1300 158 912





26-DAY CRUISE PACKAGE | ANTARCTICA, SOUTH GEORGIA & FALKLANDS

The Itinerary

Day 20 The Seabourn Falkland Island experience

Seabourn's Seabourn Venture or Seabourn Pursuit

Meals included: Breakfast; Lunch; Dinner

Day 21 Cruising

Learn about this region's pristine environment and benefit from insightful lectures, briefings, and Seabourn Conversations enrichment programs throughout your expedition experience. Enjoy the camaraderie of Seabourn Square, and the Card Room is a great choice for cruisers who crave that languorous feeling of lazy leisure.

Or indulge in a spa treatment at Seabourn's Wellness and Spa. Each Seabourn ship's Mindful Living Coach is a certified yoga and meditation practitioner who will inspire and educate guests with orientations, seminars and classes during the voyage for a holistic mind and body perspective, charges apply.

Seabourn's Seabourn Venture or Seabourn Pursuit

Meals included: Breakfast; Lunch; Dinner

Day 22 Ushuaia, Argentina - Buenos Aires, Argentina

This morning, after disembarkation, and at the appropriate time, join an arranged Seabourn transfer for Ushuaia airport to board your charter flight to Buenos Aires. Upon arrival in Buenos Aires an arranged transfer will take you to your hotel to enjoy a three night city stopover. Once checked in the remainder of the day is at leisure.

Overnight Palladio Hotel Buenos Aires Mgallery, or similar

Meals included: Breakfast

Day 23 Buenos Aires, Argentina

Enjoy a free day in Buenos Aires!

Buenos Aires, the vibrant capital of Argentina, offers a rich mix of European elegance and Latin American flair. Use your leisure time for sightseeing Buenos Aires' highlights including the colourful streets of La Boca, the historic Plaza de Mayo, and the grand Teatro Colón. Stroll through the chic Recoleta neighbourhood, home to the famous cemetery where Eva Perón rests, or enjoy tango performances in San Telmo. With its diverse architecture, lively markets, and cultural charm, Buenos Aires is a captivating city ready for discovery.

Overnight Palladio Hotel Buenos Aires Mgallery, or similar

Meals included: Breakfast

Day 24 Buenos Aires, Argentina

Shopping in Buenos Aires is a delightful adventure, offering everything from high-end boutiques to vibrant markets. Explore the elegant shops along Avenida Alvear for luxury brands, or wander through the bustling Feria de San Telmo for unique antiques and crafts. Palermo Soho's trendy boutiques feature cutting-edge fashion and design, while the famous El Ateneo Grand Splendid bookstore, housed in a historic theatre, provides a unique shopping experience. For local flavours and artisanal goods, visit the Mercado de San Nicolás or the Feria de Mataderos. Whether you're hunting for high fashion or eclectic finds, Buenos Aires has something to suit every shopper's taste.

Overnight Palladio Hotel Buenos Aires Mgallery, or similar

Meals included: Breakfast

Offer available for a limited time or until sold out. TRIP A DEAL PTY LTD: 50149240433

Updated: 14 Jan 2026 10:43:42

Have a question about this deal? We're here to help.
Call our friendly team on 1300 158 912



26-DAY CRUISE PACKAGE | ANTARCTICA, SOUTH GEORGIA & FALKLANDS

The Itinerary

Day 25 Buenos Aires, Argentina - Australia (or New Zealand)

After breakfast this morning its time to check out of your hotel and at the appropriate time a transfer is arranged to Buenos Aires airport for your homeward bound flight.

Meals included: None

Day 26 Arrive Australia (or New Zealand)

Welcome home!

Meals included: None



26-DAY CRUISE PACKAGE | ANTARCTICA, SOUTH GEORGIA & FALKLANDS

Tour Inclusions

HIGHLIGHTS

Experience a 20-night ultra-luxury cruise aboard Seabourn Venture or Seabourn Pursuit to Antarctica, South Georgia and the Falklands

Cruise on an all-purpose PC6-built 5-star vessel equipped with zodiac boats, kayaks and submarines

Relax in the comfort of well-appointed, ocean-front suites with a private veranda

Embark on immersive experiences with the 24-person world-class Expedition Team

Inclusive experiences guided by naturalists at every stop such as cultural tours, guided zodiac cruises and curated shore excursions

Witness unforgettable encounters with penguins and seals in their natural habitat

Experience the Falkland Islands, a remote archipelago of stunning landscapes and magnificent wildlife

Visit the South Georgia Islands, a subantarctic wildlife haven in one of the most remote destinations on Earth

Savour Seabourn's Signature Event, Caviar on Ice, serving exquisite hors d'oeuvres with panoramic ocean views

Enjoy complimentary premium spirits and wines, available on board around the clock

Take yourself on a culinary journey at complimentary world class dining venues - dine where, when and with whom you wish

FLIGHTS

Return international full-service flights (economy class), surcharges may apply

Return charter flight between Buenos Aires and Ushuaia

CRUISE

20-night Antarctica, South Georgia and Falkland Islands cruise aboard Seabourn Venture or Seabourn Pursuit

Tipping is neither required or expected

Unlimited premium spirits and wines on board at all times

All dining venues are complimentary and you can dine where, when and with whom you wish

Welcome champagne and complimentary in-suite bar stocked with your preferences

Complimentary caviar, an extra indulgence offered throughout your voyage

Complimentary entertainment experiences, offering a variety of shows and live music

World-class dining and culinary experiences that rival the finest restaurants anywhere

Complimentary Wi-Fi packages with unlimited minutes powered by SpaceX's Starlink

ACCOMMODATION

4 nights of 5-star accommodation in Buenos Aires, Argentina

DINING

Enjoy 61 meals, including all meals while cruising

Complimentary premium spirits and fine wines available while cruising

Choice of 5 onboard world-class dining and culinary experiences that rival the finest restaurants anywhere

ESSENTIALS

Port charges and taxes

Airline taxes and surcharges

Offer available for a limited time or until sold out. TRIP A DEAL PTY LTD: 50149240433

Updated: 14 Jan 2026 10:43:42

Have a question about this deal? We're here to help.
Call our friendly team on 1300 158 912



26-DAY CRUISE PACKAGE | ANTARCTICA, SOUTH GEORGIA & FALKLANDS

Tour Inclusions

TRANSPORT

Transportation by private air-conditioned vehicles

TRANSFERS

Day 1: Airport to hotel
Day 2: Hotel to airport
Day 2: Airport to port
Day 22: Port to airport
Day 22: Airport to hotel
Day 25: Hotel to airport

Important Information

**Please note: All information provided in this brochure is subject to both change and availability. Prior to purchase please check the current deal for up-to-date information. If you have already purchased this deal, the terms and conditions on your Purchase Confirmation apply and take precedence over the information in this brochure.*

Booking Information

After purchase, you will receive a receipt and a Purchase Confirmation, directing you to an online Passenger Information Form. You must complete the Passenger Information Form within 72 hours of purchase.

Any special requests, preferences and optional extras MUST be clearly stated in your Passenger Information Form. Any change requested after submitting your Passenger Information Form cannot be guaranteed, is strictly subject to availability and will incur surcharges as outlined in the Schedule of Fees below.

Please note: All countries and territories have different entry requirements in relation to vaccinations, quarantine/isolation periods and travel restrictions. Due to the evolving nature, we would ask all of our customers to monitor, meet and adhere to the specific requirements of their intended destination(s) in the lead-up to and immediately before travel, as well as any requirements post-travel upon their return.

Our Policies

Cancellation & Refund Policy

By placing a booking with us, you acknowledge the following important information:

- **we act as your booking agent;** TripADeal is a booking services provider, and curates the Travel Offers available on our website. We act as your booking agent, and we receive payment for the Booking Services as part of the booking price, however, we do not provide any of the Travel Services (flights, accommodation, tours or other products or services) included in your booking – the Travel Services are provided by a number of third party Travel Suppliers.

- **each booking is unique;** our Travel Offers are made up of a variety of different components and are, during the booking process, uniquely tailored to suit your requirements, for example, departure dates and ports, flight and room upgrades, tour inclusions, etc.

- **changes/modifications to your booking may not be possible;** once your booking has been made, changes or modifications may not be possible, and where possible, may incur a fee. It is important to ensure that the information you provide during the booking process is accurate and up to date, and that you read the Travel Offer carefully before placing your order.

- **Travel Offers are a package;** our Travel Offers have been curated into package offerings and must be used as a package – individual components cannot be used independently of the full package offering.

- **our Travel Offers are generally non-refundable;** in order to provide great value Travel Offers, we work with a variety of Travel Suppliers to find the best deals – this often means the Travel Suppliers' offerings are non-refundable to ensure the best price. We recommend that you obtain travel insurance as soon as you make a booking with us.

To read more about our Cancellation and Refund Policy, please [click here](#).

General Terms & Conditions

By placing your booking with us, you acknowledge and agree to our [Terms & Conditions](#), [Privacy Policy](#) and [Cancellation Policy](#).

Offer Essentials

This Travel Offer is valid for travel on selected dates until the 18th November 2026.

This Travel Offer is priced per person based on a twin share.

Departure Dates & Surcharges

See checkout for live dates and availability.

Single Traveller Supplement

For solo travellers, a mandatory single supplement applies.

V1 Veranda Suite: \$24,000
V2 Veranda Suite: \$26,000
V3 Veranda Suite: \$28,000
V4 Veranda Suite: \$30,000
Penthouse Suite: \$38,000

Please note: Accommodation for single customers who are travelling on a tour or cruise package may be in a single room, depending on availability.

Child Policy

- No child discounts are offered. The full price applies to all children travelling with their parents.
- Valid for children 6 years old and over.

Please note: Children must be accompanied by a responsible adult 21 years old and over to travel. No unaccompanied minors are allowed.

Flights

Departure Cities

Sydney, *Melbourne, *Brisbane, *Adelaide, *Perth or Auckland

Departure City Surcharges

- Melbourne: \$50 per person
- Brisbane: \$300 per person
- Adelaide: \$300 per person
- Perth: \$500 per person

International Flight(s)

Full-Service Airline(s) Used

- Cabin Class: Economy Class

Please note: We cannot accommodate one-way flights. Travellers must take all included flights within the package, and any flights intentionally forfeited will result in later flights being subject to cancellation.

Please note: From Australia or New Zealand, the flying journey to your destination may take up to 35 hours, with up to 2 stops. This is provided as a guide only - actual flight duration can vary depending on availability and airline schedules. Your booking's final details will be confirmed to you via email once available.

Important Information

Preferred Airline Surcharge

Not available.

Arrive Early & Stay Behind Options

Arrive Early

Buenos Aires - From \$300 per person, subject to availability.

Stay Behind

Buenos Aires - From \$300 per person, subject to availability.

Please note:

● **Exclusions:**

This fee does not include extra nights' accommodation, meals or airport transfers.

● **Cancellations & Changes:**

Flight booking changes or cancellations after air tickets have been issued are not guaranteed and may incur additional fees and fare difference, subject to the airline cancellation and change policies. Flight changes are subject to availability at the time of booking.

● **High-Season:**

A high-season Arrive Early or Stay Behind can be purchased for an additional charge, subject to availability. For pricing, please refer to the cart.

● **+ 60 Days:**

You can fly out up to 60 days before your package's start date, and/or return home 60 days after your package's end date. Should you wish to fly out or return home for more than 60 days from the tour, please contact us to request availability. Additional costs may apply.

● **Estimated Dates:**

Your estimated departure, return, and arrival dates are all subject to availability and may vary. The confirmed schedule for all flights will be provided when you receive your flight tickets.

- *High season surcharges apply to flights departing between the below date ranges:*
- *15th September 2025 - 12th October 2025*

- *1st December 2025 - 19th December 2025*
- *20th December 2025 - 4th January 2026*
- *5th January 2026 - 31st January 2026*
- *3rd April 2026 - 20th April 2026*
- *26th June 2026 - 17th July 2026*
- *18th September 2026 - 9th October 2026*
- *12th December 2026 - 18th December 2026*
- *19th December 2026 - 3rd January 2027*
- *4th January 2027 - 26th January 2027*

Stopover Packages

* Santiago, Chile

Includes:

- 2, 3 or 5 nights in 4-star accommodation
- Daily breakfast
- Return airport transfers

For pricing, please refer to the payment cart at checkout.

Please note:

- *When a pre and post-tour stopover is chosen, the same stopover location must be chosen each way, due to the airline used.*
- *When selecting to Arrive Early for your tour in conjunction with a Stopover Package, your fly out date from home will take place before the stopover.*
- *When selecting to Stay Behind after your tour in conjunction with a Stopover Package, your stopover will take place before your final flight home.*
- *Stopover packages are subject to availability.*
- *In the event that a purchased stopover package and a purchased preferred airline upgrade are not compatible, you will have the option to receive a refund for the preferred airline upgrade or be offered an alternative stopover city option, e.g if you choose to fly with Singapore Airlines you cannot stopover in Dubai.*
- *Blackout dates apply to flights departing between the below date ranges:*
- *2026: Christmas and New Years Eve - 18 December 2026 to 3 January 2027*

Flight Class Upgrades

Business Class: For pricing, please refer to

the payment cart at checkout.

Please note:

- *Flight upgrades are subject to availability and pricing changes (if we cannot fulfil your request, the upgrade cost will be refunded).*
- *On any upgrade purchase, short-haul flights and domestic flight sectors are not guaranteed, subject to aircraft configuration.*

Outbound Flights

Please note: Due to flight scheduling and availability, some departures may occur on Day 0. Affected customers must be available to depart the day before. Flight times will be indicated on your final documents, issued 4-6 weeks before departure.

Missed Flights

If you fail to arrive for your outbound flight, you risk all flight and land arrangements in your destination being automatically cancelled by the airlines and land operator, respectively. Additional fees may apply to reinstate these services. If you miss your flight for whatever reason, please contact us as soon as possible to make arrangements.

Cruise

Medical Disclaimer

Travel to Antarctica is physically demanding, and our Travel Suppliers require all guests to obtain medical clearance before departure even if you don't intend to disembark at Antarctica. This involves completing a medical form and may require medical clearance from a doctor, which could incur additional costs. Any guests who fail to provide the necessary medical documentation will be denied boarding.

Seabourn Venture or Seabourn Venture

Seabourn Venture and Seabourn Pursuit are marvels of modern luxury travel, designed to reach the most remote and coveted destinations worldwide. Constructed to PC6 Polar Class standards, they boast cutting-edge hardware and technology for seamless operation in

Important Information

diverse environments. Guests can engage in up-close wildlife encounters and enriching cultural experiences. Luxurious public and enrichment spaces, designed by renowned designer Adam D. Tihany, offer unparalleled comfort and elegance. Dining aboard Seabourn Venture or Seabourn Pursuit is a culinary delight, with round-the-clock complimentary options from luxurious dining experiences like The Restaurant, The Colonnade, The Patio, Sushi in the Club, Seabourn Square and Constellation Lounge. Indulge in complimentary premium spirits, fine wines, and caviar, enhancing the onboard experience. Stay connected with complimentary Wi-Fi powered by SpaceX's Starlink.

Experience once-in-a-lifetime adventures with signature events like Caviar in the surf. Wildlife sightings abound, complemented by onboard narration and insights from the Expedition Team. With inspiring enrichment programs and special guest speakers, Seabourn Venture and Seabourn Pursuit promise an unforgettable journey of discovery and luxury.

Complimentary Gear Provided By Seabourn

- Complimentary PolarShield Parka by Helly Hansen: A state-of-the-art, custom-designed 'Two in One' hooded parka made by the leader in maritime apparel. It's windproof, waterproof and easily fits over layers. The outer shell can be worn on its own or paired with the insulating inner jacket.
- Complimentary WaterShield Waterproof Pack by Helly Hansen (included when you order your parka): A WaterShield waterproof backpack by Helly Hansen is one of the most useful items in your gear repertoire.
- Complimentary Brand Beanie by Helly Hansen (included when you order your parka).

Please note:

- *Complimentary gear is yours to keep at the end of the voyage.*

- *Order your complimentary parka and pack at least 30 days in advance for delivery to your onboard suite.*

Packing List Guide

You don't need a lot of gear, just the right gear and this is your "must-have" list for Antarctica.

- Base Layer - Long underwear that's breathable, mid-weight thermal tops and bottoms that provide warmth without bulk. We suggest travelling with two sets.
 - Insulating Layer - Expedition tops and bottoms that's worn over your base layer and under your waterproof pants and jacket. You may wish to choose expedition weight thermals or select comfortable, insulating shirts and pants made of "state of the art" performance fabrics that move and flex with you. Warmth and insulation are key for this layer.
 - Lofted, insulating "puffy" vest. While your complimentary PolarShield Parka Set includes a jacket insulated with Primaloft, you'll appreciate the versatility a similarly lofted vest adds to your adventure wardrobe. Such a vest is a wonderfully flexible piece to wear onboard, on deck or as an added layer during times of "exceptional" weather. The loft retains heat with remarkable efficiency, is feather-light and compacts for easy packing.
 - Outer Layer - Waterproof pants as you'll be "ship bound" without them. Waterproof is essential (but not breathable in this instance as you don't want moisture seeping through the fabric's pores while seated in the Zodiac or sitting in a snowpack onshore). Loose fitting and wide leg width are preferred (without zippers so you can easily tuck them into your knee-high waterproof boots).
 - Footwear - Knee-high, insulated, waterproof boots are provided for your use with compliments while you are onboard your expedition vessel (you are fitted and size selections are made once you're onboard). For those with special footwear needs, you may wish to rent overshoe boots which are made to be worn over your own custom, orthopaedic footwear.
 - Socks - Heavyweight "over the calf" boot socks made of wool or wool blend.
 - Gloves - Insulating waterproof gloves or mittens with removable liners. The liners can be worn as "stand alone" gloves/ mittens during warmer moments or when reducing bulk to hold your camera, binoculars or smartphone. You'll also need neoprene paddling gloves if you opt to have a kayak experience.
 - Headwear - You may wish for an additional, versatile piece of headwear or neckwear such as a balaclava or neck gaiter. It's great to have on hand during a windy, wet or snowy weather event.
 - Trekking poles: A lightweight, collapsible/ telescopic walking staff (also called a trekking pole) provides a sense of security, increased balance and confidence when walking on ice, snow and rugged terrain.
 - Waterproof sacks and cases - Heavy-duty waterproof sacks and cases specifically designed to protect your smartphone, camera, film, binoculars and carry in your backpack.
 - Foot/Hand warmers - To put between your feet and your socks and your hands and gloves for extra warmth.
 - Binoculars: Compact, high-performance binoculars ensure you don't miss a thing. A pair of 8" x 26" (8 power magnification and 26mm objective diameter) is recommended for ease of viewing, travelling and packing.
 - Other - It's also recommended to pack a pair of good sunglasses, glacier glasses or goggles with U.V. filter protection, sunscreen, lip balm and sunscreen.
- Participating in the offered activities on this itinerary will require good mobility, generally good health, and the ability to care for oneself in all activities of daily

Important Information

living. Guests should be capable of negotiating uneven and slippery terrain ashore including rocks, snow and ice. At ports of call, you will embark and disembark the ship either by using a gangway or, in ports where the ship anchors in the harbour, by small rubber landing crafts (Zodiacs). In ports where Zodiacs are used guests who participate in excursions, and landings and wish to visit tender ports of call must be able to negotiate 10-12 steep internal stairs and get in and out of small rubber landing crafts (Zodiacs) with limited assistance. Due to the small nature of these landing crafts, Seabourn are not able to transport wheelchairs or scooters with guests. While every effort is made to assist guests, Seabourn hopes you understand that they are unable to provide staff members who can spend all or most of their time working with a single guest in order to address ongoing special needs. Guests who will require that level of care will need to travel with a companion who will be able to provide them with the assistance they require.

Onboard Currency

\$ USD

Cabins/Staterooms

V1 Veranda Suite (Located Deck 5):
Approximately 33m² including 7m² veranda

Suites feature a comfortable living area; private veranda; queen-size bed or two twin beds; an extra-large walk-in closet for expedition gear; personal safe; interactive flat-screen TV with music and movies; fully stocked bar and refrigerator; writing desk with personalised stationery; makeup vanity; spacious bathroom with double vanities, tub and shower, plush robes, slippers, hairdryer and 110/220V AC outlets.

V2 Veranda Suite (Located Decks 6 & 7):
Approximately 33m² including 7m² veranda

Suites feature a comfortable living area;

private veranda; queen-size bed or two twin beds; an extra-large walk-in closet for expedition gear; personal safe; interactive flat-screen TV with music and movies; fully stocked bar and refrigerator; writing desk with personalised stationery; makeup vanity; spacious bathroom with double vanities, tub and shower, plush robes, slippers, hairdryer and 110/220V AC outlets.

V3 Veranda Suite (Located Decks 5 & 6):

Approximately 33m² including

7m²

veranda

Suites feature a comfortable living area; private veranda; queen-size bed or two twin beds; an extra-large walk-in closet for expedition gear; personal safe; interactive flat-screen TV with music and movies; fully stocked bar and refrigerator; writing desk with personalised stationery; makeup vanity; spacious bathroom with double vanities, tub and shower, plush robes, slippers, hairdryer and 110/220V AC outlets.

V4 Veranda Suite (Located Decks 7 & 8):
Approximately 33m² including veranda of 7m²

Suites feature a comfortable living area; private veranda; queen-size bed or two twin beds; an extra-large walk-in closet for expedition gear; personal safe; interactive flat-screen TV with music and movies; fully stocked bar and refrigerator; writing desk with personalised stationery; makeup vanity; spacious bathroom with double vanities, tub and shower, plush robes, slippers, hairdryer and 110/220V AC outlets.

PH Penthouse Suite (Located on deck 7 & 8)

Approximate total space: 49 sq. m. including veranda of 9 sq. m. All Penthouse Suites feature a comfortable living area; private veranda; queen-size bed or two twin beds; walk-in closet; personal safe; interactive TV with music and movies; fully stocked bar and refrigerator; writing desk with personalised

stationery; makeup vanity; spacious bathroom, separate tub and shower, plush robes, slippers, luxury health and beauty products, hairdryer and 110/220V AC outlets.

Please note:

- All cabins are subject to availability; some cabins may have restricted views.
- Cruise cabins are booked on a guaranteed basis and are assigned by the cruise line prior to departure.

Cruise Arrival & Departure Times

Please keep in mind that the provided cruise arrival and departure times are an approximate and will be finalised upon receipt of your cruise tickets.

Accommodation

Accommodation Used

5-Star Properties (Self-Rated)

- Buenos Aires, Argentina: Alvear Palace Hotel
- Buenos Aires, Argentina: Palladio Hotel Buenos Aires

Please note: Accommodation/rooms offered are based on a lead-in room type and are subject to availability based on seasonality. In the instance a property is not available, a similar standard of accommodation will be provided. Properties will be confirmed and included in your travel pack, which you will receive 4-6 weeks before travel.

Extra Nights

Not available.

Please note: If you are interested in booking additional nights of accommodation pre or post-tour, please wait until you receive your travel documentation approximately 4-6 weeks before departure for the confirmed list of hotels. If booking your own additional accommodation directly with the hotel, please be aware that you may be required to change rooms at the start/end of your tour.

Maximum Room Capacity

2 people.

Triple Share

Important Information

Not available.

Bedding Configuration

Twin or double (subject to availability).

Optional Tours/activities

- Some tours or shore excursions require minimum numbers to operate.
- Shore excursions can be booked/ reserved directly with the cruise line before travel (subject to availability)
- Shore excursions can also be booked whilst onboard (subject to availability).
- Shore excursion programmes and itineraries may vary depending on local conditions and/or any unforeseen events concerning the timing on the day of the tour. Some excursions are very popular, and therefore availability cannot always be guaranteed, it is advisable to book in advance to avoid disappointment.

Exclusions

- Visa fees and requirements
- Domestic transfers and flights not stated in the deal offer
- Meals/beverages not stated in the deal offer
- Optional gratuities/tipping
- Optional activities/tours
- Personal expenses
- Travel insurance
- Any costs associated with an interruption to your tour as a result of an airline schedule change or cancellation
- Mandatory city tax

Gratuities/tipping

Please note: Tipping for services provided is always a matter of personal discretion; however, please be aware that many locals consider tipping part of their normal remuneration, and they may approach you for payment; there's no need to be intimidated by the request.

Cruise

Tipping is neither expected nor required on your Seabourn cruise.

Other Important Information

TOUR GUIDE VS. TOUR LEADER

Tour Guide

Often locals with intimate knowledge of an area, its culture, and history. Their role entails providing commentary, routing the tour, and seeing that people have a good time. They are a licensed, qualified expert who supplies specific information on the history, art, architecture and culture of the city/village/attraction where they are guiding the tour. The guide meets the group at the required place and leaves it at the end of the tour; they do not travel with the group.

Tour Leader

An experienced person tasked with ensuring the smooth operation of tours, as well as providing practical support to passengers throughout the whole trip. Their role primarily includes assisting with accommodation, transportation between locations, and communication with tour guides at each stop. A tour leader may provide general guidance around a city or village and offer information on the place visited on the bus. However, they are not required to have specific art, architecture, or historical knowledge. They are not allowed to provide a guided tour or commentary of a city/village/attraction once there and, if caught doing so, can be fined.

Please note: Tour leaders/guides are not a standard inclusion in all travel offers. Tour leaders/guides will only be made available when required to enhance the experience of the destination featured.

CLIMATE & AVERAGE TEMPERATURES

Buenos Aires

In November, Buenos Aires enjoys the heart of its spring season, characterised by a warm and pleasant climate. Average high temperatures typically range from 25°C to 26°C, while the average lows are around 16°C. This makes for generally sunny and warm conditions, ideal for exploring the city's many outdoor attractions. Although it's an excellent time for a visit, travellers should be prepared for some moderate

rainfall. As the month progresses and the city moves closer to summer, temperatures tend to rise slightly.

Antarctica

Antarctica in November marks the beginning of the austral summer season, and it's a period of transition as the continent awakens from its long winter. The weather varies significantly depending on the region you visit, but for cruise passengers, the focus is on the Antarctic Peninsula. On the Antarctic Peninsula, where most expeditions take place, you can expect average high temperatures to be around -2°C and average lows to be around -8°C. While this is significantly colder than Buenos Aires, it's considered relatively mild for Antarctica. The weather is still unpredictable, with a chance of blizzards and rougher seas. However, the days are getting longer, and you'll experience a dramatic increase in daylight, with anywhere from 17 to 20 hours of daylight by the end of the month.

South Georgia

In November, South Georgia enters the beginning of its austral summer, offering a fantastic time for a visit despite the famously harsh and unpredictable weather. While average temperatures range from lows of around -1°C to highs of 3°C to 6°C, the island is known for its strong winds, cloud cover, and sudden shifts between rain and snow. The primary draw of visiting at this time, however, is the magnificent wildlife spectacle. This is a crucial period for the island's vast colonies, as the beaches are filled with thousands of king penguins, elephant seals, and fur seals arriving to breed and establish territories. With longer days providing more daylight for shore landings, November is an unparalleled time to witness the incredible biodiversity and natural drama of this remote wilderness.

Falkland Islands

In November, the Falkland Islands are in the heart of their spring season, offering a climate that is cool and temperate, yet notably unpredictable. Average daily high

Important Information

temperatures hover around 10°C to 11°C, with lows dropping to approximately 3°C to 4°C. The islands are famous for their persistent and strong winds, which are a constant feature year-round. Despite being one of the drier months, you should still anticipate the possibility of rain. A major advantage of visiting in November is the lively wildlife scene, as penguin and other bird colonies are at their most active, returning to their breeding grounds and creating fantastic opportunities for photography and observation.

Weather

We always suggest referring to an online source for the most up-to-date weather information for your destination/s.

FLIGHTS

Seat Selection & Frequent Flyer Points

We do not arrange seat selection. It is essential to highlight that some airlines do not allow pre-selected seats. We strongly suggest you contact the airline directly with seating allocation requirements and/or arrive at the airport earlier to arrange your seating. While we do not add frequent flyer member details to bookings, you can do this directly with the airline once you have your flight information.

Passport Validity

Customers must provide valid passport details either at the time of purchase or no later than 90 days before the departure date. Failure to do so may result in the cancellation of the booking. Customers will be responsible for any costs and fees incurred in this instance.

CRUISE

Embarkation/Disembarkation

- Begins approximately 2 hours after docking.
- Due to security reasons, all guests must be on board 2 hours before sailing.
- Itineraries are subject to change at any time without notice.

- Check your specific sailing for exact departure and arrival times. All times are local to the port.

Please note: Strict Covid-19 terms may also apply regarding proof of insurance covering Covid-19 and/or vaccination. Please refer to the cruise lines' terms and conditions for further information before boarding.

Cruise Loyalty Discounts

Please note: Travellers must contact the cruise line directly upon receiving their travel documents in order to request any membership benefits they may be entitled to.

Meals

For meals not included, the tour leader (when available) will offer assistance with reservations, suggestions and directions to local restaurants. It is your responsibility to notify us of any dietary requests/requirements.

Please note: We will do our best to meet your requests/requirements; however, we cannot guarantee that we will always be able to.

Luggage

You will be responsible for all your personal belongings whilst on tour. You must carry your own luggage from the vehicle to the hotel room and back to the vehicle. The driver will assist with the uploading and unloading of bags from the vehicle.

OTHER

Mobility

If you require wheelchair access please contact our friendly sales and service team to inquire on your behalf.

Fitness Level Required

Adventure (and spontaneity) create some of the best travel memories. Bear in mind, your home schedules and timings might not be adhered to on tour - it's all part of the fun!

A moderate level of fitness will be required. Expect a moderate pace of touring with a focus on guided tours that may include full days with extended

activity, guided city tours or nature walks. You will require a general level of fitness for unassisted navigation of stairs and inclines, longer distances with possible periods of standing when visiting sites, walking on sloping, uneven ground or elevations. You will be responsible for your own luggage and have the ability to board all modes of transport without assistance.

Please note:

- *Many areas may be inaccessible to wheelchairs or mobility scooters, where the unassisted use of personal walking sticks and other aids may be required. Although some assistance may be available, every traveller should be self-reliant during all aspects of their travel.*
- *It is expected that every traveller must be self-reliant and able to undertake all aspects of their own travel. Please speak to your booking agent about your personal circumstances and any assistance requirements to ensure this tour is right for you.*
- *If you have any concerns, please consult your healthcare provider prior to purchase/travel.*

Yellow Fever

A valid international certificate of vaccination against Yellow Fever is required in many countries. You may need to present this on arrival at the airport or border crossing. Some countries will refuse entry if you are unable to present your certificate. It's also common for your home country to request a Yellow Fever certificate upon arrival. You must check with your doctor well before leaving home about the Yellow Fever requirements for the countries you'll be visiting.

Sightseeing

Please note: If entry to a site is affected by changes in operating hours or public holiday closures, your itinerary, where possible, may be adjusted, or a similar activity will be offered in its place (subject to availability).

Wildlife

TripADeal cannot guarantee animal

Important Information

sightings. Wildlife are unpredictable and factors such as weather conditions, predatory fear and animal movements can impact sightings.

Shopping

Shopping overseas can be a daunting and confusing experience, especially when there is a language barrier. Please be very cautious when foreign currencies and prices are involved. If paying by credit card, please pay close attention to the amount you are being charged and keep all your receipts. Do not make any purchases you are not comfortable with or feel pressured into. If you are uncertain or need assistance with the language barrier, please seek assistance from your Tour Guide/Leader. Please refer to our [Terms and Conditions](#) regarding shopping for further information.

Visas

Argentina

Australian passport holders are visa-exempt for a stay of up to 3 months.

Please note: Effective immediately, all international travellers to Argentina must hold valid travel insurance with medical coverage. This insurance may be requested and verified upon arrival in the country. Argentina's public healthcare system will no longer provide free medical services to foreign nationals. It is therefore essential that you obtain appropriate insurance before your departure.

Chile (For optional Santiago, Chile pre/post tour stopovers)

As of 17th September 2025 tourist visas for Chile are not required if travelling on an Australian Passport. You can stay in Chile for up to 90 days without a visa. If you're unsure whether you need a visa, contact the nearest embassy or consulate of Chile.

Important:

- Please start arranging your visa three weeks before departure to account for any delays due to consulate operating hours.

- Visa rules are subject to change. Please check with the nearest embassy, consulate or immigration department of the destination/s you are visiting once you receive your travel documentation to ensure you have the most up to date information.
- It is your responsibility to be travel-ready and ensure that you are aware and comply with any destination or travel requirements, including the validity of all required travel documents.
- Passengers who are not Australian citizens must also check with the respective consulate or visa agency to determine what their visa requirements are and what personal identification is required.
- It is also important to note that some areas of employment, such as journalism, government authorities and charity organisations, may have additional restrictions in applying for visas. This may, in turn, affect the type of application required.

Travel Insurance

Embarking on your next trip is exciting, and while you hope the unexpected does not happen, it is best to be prepared. We strongly recommend you take out travel insurance when making your booking. Whether it's a potential medical emergency, a flight cancellation, a delayed suitcase, or an unforeseen event, it's important to ensure you're adequately protected. For more information or advice visit <https://www.tripadeal.com.au/travel-insurance>

Schedule Of Fees

Voluntary Changes

This includes booking changes requested by you, including but not limited to those changes requiring an airline ticket or a Purchase Confirmation reissue.

- Changes - \$100 per booking and any additional charges applied by the airline/cruise company/accommodation/other travel providers.

Name Changes Due To Passenger Error

If the incorrect name has been provided, charges of \$100 per booking and any additional charges applied by the airline/cruise company/accommodation/other travel providers.

Supplier Fees

In the event the tour package you have purchased is unable to proceed, and/or a Travel Supplier is unable to fulfil the tour due to external circumstances (Limitation of Liability e.g. a Force Majeure event), there may be a fee or amount of money that is withheld by our Suppliers and is unrecoverable. This may be due to non-refundable airline tickets, cancellation penalties with cruise cabins or unrecoverable payments with our land/accommodation partners. If refunds are not available from Suppliers, we will endeavour to obtain a travel credit on the best terms available and communicate these outcomes to you. In the event we are unable to obtain a refund or travel service credit, or part thereof, this cost is passed on to the customer as a Supplier Fee.