



All Inclusive Alaska to Hawaii Cruise

CANADA • UNITED STATES • ALASKA • HAWAII

The Offer

Embark on a 25-day cruise & stay package featuring back-to-back voyages aboard the state-of-the-art cruise ship, Celebrity Edge. Begin in Seattle, USA, embarking on a 7-night all-inclusive sail to Alaska's iconic glaciers & Inside Passage. Continue the journey with a 10-night all-inclusive cruise to the sun-soaked islands of Hawaii, with days at leisure to experience the tropical paradise of Oahu.

Fly to Seattle, USA with a leisure day to explore the "Emerald City" at your own pace. Venture downtown or discover historic Pike Place or climb the Space Needle. Board Celebrity Edge, and head to Deck 14's Oceanview Cafe to grab a bite to eat and take in the panoramic views. Discover the innovative Magic Carpet restaurant as it moves between decks, enjoy the entertainment on offer at Eden, the three-story garden lounge, and more.

Cruise north to Alaska's capital Juneau, remote frontier towns of Ketchikan, ancestral home of the indigenous Tlingit people and the historic gold rush town of Skagway. Sail through the icy landscapes of Glacier Bay where you might glimpse brown bears, seals or moose along the shores. Immerse yourself in the untouched beauty of the Endicott Arm Fjord, surrounded by deep blue water, snow-dusted

mountains and numerous waterfalls. Keep your eyes on the sky for high-flying bald eagles as you sail through the famed Inside Passage, docking in the British-inspired town of Victoria before disembarking in Vancouver.

Explore Stanley Park or downtown Vancouver, with time at leisure before re-embarking Celebrity Edge to cruise to the Hawaiian Islands. Experience glorious sea days relaxing by the pool, indulging in world-class cuisine, watching thrilling theatre shows, listening to live music and more. Reach the lush coast of the Big Island and the town of Hilo, home to Rainbow Falls, Volcanoes National Park and the imposing Kilauea Volcano. Sail on to Kailua Kona on the picturesque Kona Coast, famous for the nearby marine sanctuary of Kealahou Bay. Enjoy an overnight stay in Honolulu, Oahu, with time to explore nearby Pearl Harbour, Iolani Palace and more. End your adventure with a relaxing hotel escape, minutes from the iconic Diamond Head and the legendary Waikiki Beach.

This deal includes return international full-service flights, a 7-night all-inclusive Alaska Cruise, a 10-night all-inclusive Hawaii cruise, 6 nights of hotel accommodation, 49 meals and more.

Offer available for a limited time or until sold out. TRIP A DEAL PTY LTD: 50149240433

Updated: 19 Aug 2025 12:27:35

Have a question about this deal? We're here to help.
Call our friendly team on 1300 158 912



CANADA ● UNITED STATES ● ALASKA ● HAWAII

The Offer

Treat yourself to a cabin upgrade, or extend the adventure with Arrive Early and Stay Behind options available.

Offer available for a limited time or until sold out. TRIP A DEAL PTY LTD: 50149240433

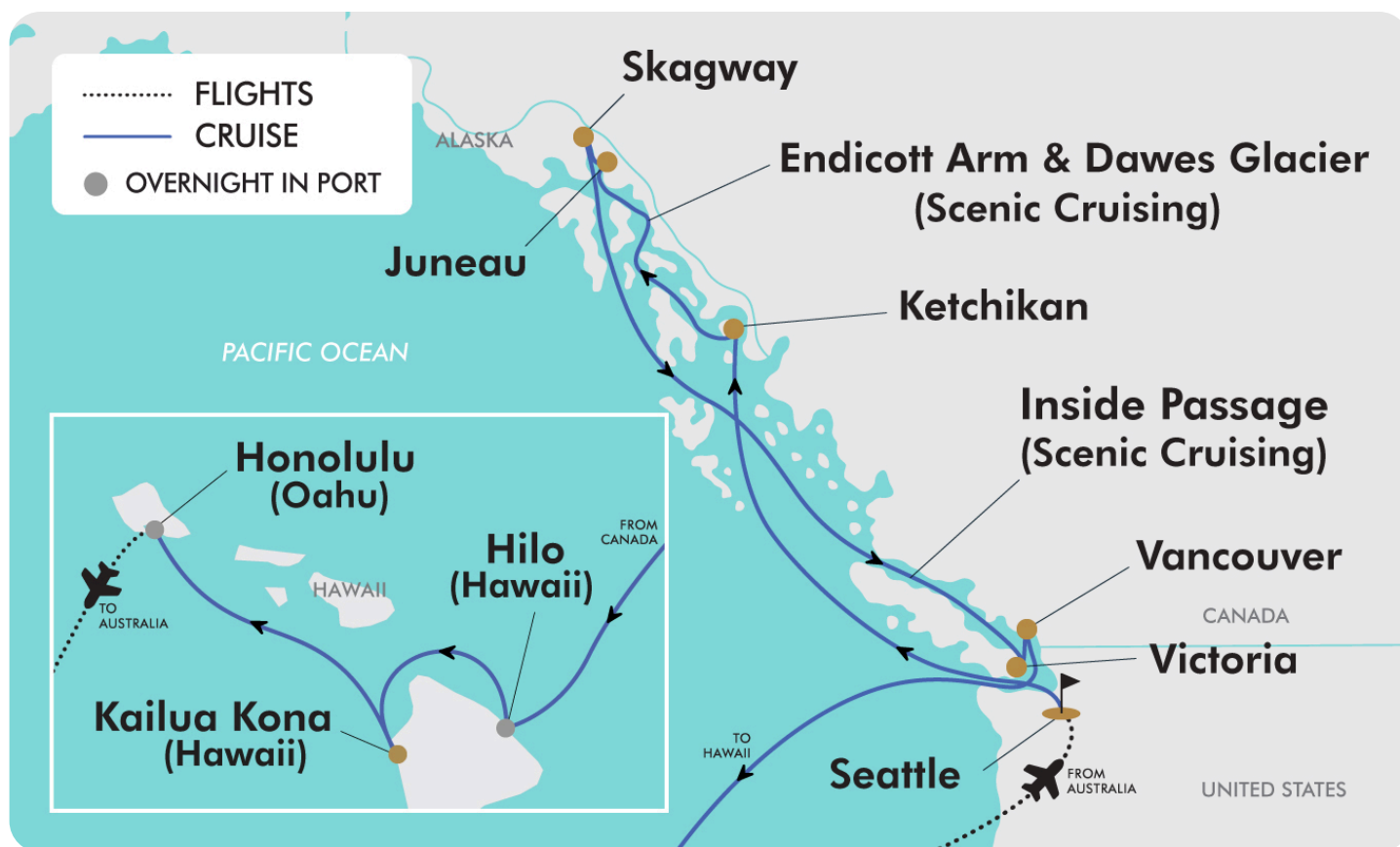
Updated: 19 Aug 2025 12:27:35

Have a question about this deal? We're here to help.
Call our friendly team on 1300 158 912



25-DAY CRUISE PACKAGE | ALL INCLUSIVE ALASKA TO HAWAII CRUISE

The Map



Offer available for a limited time or until sold out. TRIP A DEAL PTY LTD: 50149240433

Updated: 19 Aug 2025 12:27:35

Have a question about this deal? We're here to help.
Call our friendly team on 1300 158 912



25-DAY CRUISE PACKAGE | ALL INCLUSIVE ALASKA TO HAWAII CRUISE

The Itinerary

Day 1 Australia (or New Zealand) - Seattle, USA

Today, at the appropriate time, make your own way to the airport to board your flights to Seattle.

Once you have cleared customs and claimed your luggage, please make your own way to your hotel. When you've checked in, this exciting city is yours to enjoy.

Optional Activity: Private Transfer

Enjoy a private transfer from Seattle airport to hotel. Please see current pricing in Important Information

Overnight: Coast Seattle Downtown Hotel by APA or similar,
Meals included: In-Flight

Day 2 Seattle, USA

Enjoy a day at leisure to explore Seattle, known as the 'Emerald City' in reference to the lush evergreen forests of the area. Venture into the city to discover Pike Place Market, Pioneer Square Historic District and Chinatown. Afterwards, you could perhaps end your day by visiting the Space Needle, Seattle's most recognisable icon. You can view the downtown Seattle skyline and the Cascade Mountains from the top of the Space Needle. With a city like Seattle, there are plenty of options to fill your day as you please.

Overnight: Coast Seattle Downtown Hotel by APA or similar,
Meals included: None

Day 3 Seattle, USA - Embark on a 7-night Alaska Cruise

Departs: 16:00

Enjoy your last morning soaking up the atmosphere of Seattle.

When the time is right, please make your own way to the pier to check in for your adventure with Celebrity Cruises.

Optional Activity: Private Transfer

Enjoy a private transfer from Seattle hotel to Seattle cruise terminal. Please see current pricing in Important Information.

Overnight: Celebrity Cruises' Celebrity Edge
Meals included: Dinner

Day 4 Cruising

Enjoy a day at sea as you cruise towards your next destination. While at sea, take time to recharge before the next adventure. Lounge by the pool, taste the delicacies, explore the venues onboard or perhaps spoil yourself at the spa.

Overnight: Celebrity Cruises' Celebrity Edge
Meals included: Breakfast; Lunch; Dinner

Day 5 Ketchikan, Alaska

Docked

Arrives: 07:00 - Departs: 16:00

You've never tasted salmon so fresh! Known as the 'Salmon Capital of the World', Ketchikan is also the ancestral home of the Tlingit people, who have carved the world's largest collection of totem poles. If you're up for an adventure, take a canoe and nature trail excursion through the rain forest or a wilderness exploration followed by a sumptuous crab feast you'll long remember (optional shore excursions)

Overnight: Celebrity Cruises' Celebrity Edge
Meals included: Breakfast; Lunch; Dinner



25-DAY CRUISE PACKAGE | ALL INCLUSIVE ALASKA TO HAWAII CRUISE

The Itinerary

Day 6 Endicott Arm, Alaska - Juneau, Alaska Endicott Arm - Scenic cruising

Arrives: 06:15 - Departs: 10:30

Alaska's Endicott Arm Fjord marks the southern edge of the 653,179-acre Tracy Arm-Fjords Terror Wilderness area. As you sail through its 30-mile-long stretch, you'll be amazed by the untouched beauty of the surrounding granite mountains, verdant valleys and numerous waterfalls. Drifting icebergs, deep blue waters and a spectacular tidewater glacier only add to this natural spectacle's appeal.

Endicott Arm is one of the largest breeding grounds for harbour seals on the planet. Keep your eyes open for these creatures splashing in icy waters near the ship or floating with their pups on giant chunks of ice. Along the shore you might also glimpse brown bears, bald eagles, sea ducks, deer, moose and wolves.

Your journey through scenic Endicott Arm Fjord ends with a front-row view of the striking Dawes Glacier. Standing over 600 feet tall and a half-mile wide, this very active icecap is known for its spectacular calving displays which noisily produce huge, chunky icebergs that float in area waters. Remember to dress in wind-resistant layers for viewing scenery outside on deck.

Juneau - Docked

Arrives: 13:30 - Departs: 22:00

Here's your chance to take a glacial dogsled adventure (charges apply), in Alaska's capital, where cultured sophistication meets the ruggedness of the Last Frontier.

Overnight: Celebrity Cruises' Celebrity Edge
Meals included: Breakfast; Lunch; Dinner

Day 7 Skagway, Alaska Docked

Arrives: 07:00 - Departs: 18:00

The great Klondike Gold Rush lives on in Skagway's charming downtown of restored 19th-century buildings and its historic railway. Located on the edge of the wilderness, this small town saw its fair share of gold rush, get rich dreamers pass through. Today, it's residents are more than welcome to share the stories of its untamed past. And there's so much fascinating history to uncover on a Skagway cruise. Join a shore excursion to Klondike Gold Rush National Park Museum for an in-depth look at Klondike and the two routes out of Skagway - Chilkoot Pass and White Pass. From the vintage train, admire the mountains and see the 1898 trail that fortune seekers traveled on foot. The White Pass & Yukon Route Railroad runs the vintage locomotives through the famously steep Chilkoot Trail and offers sweeping mountain views during its climb toward Canada.

Overnight: Celebrity Cruises' Celebrity Edge
Meals included: Breakfast; Lunch; Dinner

Day 8 Cruising

Enjoy a day at sea as you cruise towards your next destination. While at sea, take time to recharge before the next adventure. Lounge by the pool, taste the delicacies, explore the venues onboard or perhaps spoil yourself at the spa

Overnight: Celebrity Cruises' Celebrity Edge
Meals included: Breakfast; Lunch; Dinner

Offer available for a limited time or until sold out. TRIP A DEAL PTY LTD: 50149240433

Updated: 19 Aug 2025 12:27:35

Have a question about this deal? We're here to help.
Call our friendly team on 1300 158 912





25-DAY CRUISE PACKAGE | ALL INCLUSIVE ALASKA TO HAWAII CRUISE

The Itinerary

Day 9 Victoria, British Columbia, Canada Docked

Arrives: 17:30 - Departs: 23:59

The seaside capital of Victoria, British Columbia is located on Vancouver Island at the southern tip of Western Canada. Named after Queen Victoria, this one-time British colony has retained much of its colonial charm with decorative English gardens and castles, but also reflects its modern landscape with bohemian shops, coffee bars and international cuisines. The year-round moderate temperatures are perfect for exploring this incredible city. From hiking and golfing to dining and shopping, there's much to discover on a Victoria cruise.

Overnight: Celebrity Cruises' Celebrity Edge
Meals included: Breakfast; Lunch; Dinner

Day 10 Vancouver, British Columbia, Canada - Embark on a 10-night Hawaii Cruise

Arrives: 06:00 - Departs: 17:00

Enjoy the day at leisure in Vancouver between your Alaska and Hawaiian cruise.

Please note: Due to traveling on back to back cruises, you may be required to change cabins on this day. If you have a different cabin number for the second voyage, the cabin stewards will be able to assist you with transferring your bags for the next leg of your journey.

Overnight: Celebrity Cruises' Celebrity Edge
Meals included: Breakfast; Dinner

Day 11 Cruising

Witness the architectural marvel of the Magic Carpet, a cantilevered platform offering unique views and dining experiences depending on its position. Immerse yourself in the vibrant heart of the ship at the Grand Plaza, a multi-story atrium featuring the dazzling Martini Bar with its flair bartenders and live entertainment that evolves throughout the day.

Overnight: Celebrity Cruises' Celebrity Edge
Meals included: Breakfast; Lunch; Dinner

Day 12 Cruising

Seek tranquility in the adults-only Solarium, an indoor pool area with a serene atmosphere and soothing sounds. Elevate your relaxation by indulging in the SEA Thermal Suite within The Spa, offering a collection of unique therapeutic experiences like the Hammam, Crystalarium, and Infrared Sauna for ultimate rejuvenation (charges apply).

Overnight: Celebrity Cruises' Celebrity Edge
Meals included: Breakfast; Lunch; Dinner

Day 13 Cruising

Discover Eden, a multi-level, nature-inspired venue that seamlessly blends indoor and outdoor spaces with lush greenery. Enjoy its serene ambiance during the day, then witness its magical transformation into an enchanting performance venue with live music and unique entertainment as evening falls. Don't miss the open-air Rooftop Garden, a living urban playscape perfect for leisurely strolls, enjoying live music, or watching movies under the stars.



25-DAY CRUISE PACKAGE | ALL INCLUSIVE ALASKA TO HAWAII CRUISE

The Itinerary

Overnight: Celebrity Cruises' Celebrity Edge
Meals included: Breakfast; Lunch; Dinner

Day 14 Cruising

Embark on a culinary journey with an abundance of dining options. Beyond the main restaurants, explore the extensive global buffets at Oceanview Café, grab a casual bite at the Mast Grill, or treat yourself to specialty experiences like the interactive Le Petit Chef where animated characters "prepare" your meal, or fine dining at Fine Cut Steakhouse (charges apply). Complement your meals with innovative cocktails from one of the many themed bars.

Overnight: Celebrity Cruises' Celebrity Edge
Meals included: Breakfast; Lunch; Dinner

Day 15 Cruising

Participate in a variety of onboard activities designed for engagement and fun. Catch a spectacular production show in The Theatre featuring world-class performers and cutting-edge technology. Join in lively trivia games, attend an insightful guest lecture, or try your luck at the sophisticated Casino. For those seeking active pursuits, the state-of-the-art Fitness Center offers equipment with ocean views, along with various fitness classes.

Overnight: Celebrity Cruises' Celebrity Edge
Meals included: Breakfast; Lunch; Dinner

Day 16 Overnight in Hilo, Hawaii, USA
Arrives: 08:00 - **Overnight**

Located on the lush coast of the Big Island, Hilo is home to two of the most spectacular waterfalls in all of creation: Rainbow Falls in the south and the mammoth Akaka Falls in the north.

Overnight: Celebrity Cruises' Celebrity Edge
Meals included: Breakfast; Lunch; Dinner

Day 17 Hilo, Hawaii
Departs: 18:00

Hilo is also home to Volcanoes National Park and the imposing Kilauea Volcano.

Overnight: Celebrity Cruises' Celebrity Edge
Meals included: Breakfast; Lunch; Dinner

Day 18 Kailua Kona, Hawaii
Tendered

Arrives: 07:00 - **Departs:** 20:00

This was once the seat of power from which the great King Kamehameha ruled his island empire. Located on the picturesque Kona Coast, where some of the world's best coffee is harvested, Kailua-Kona is close to the marine sanctuary of Kealahou Bay. This snorkeling haven is also home to the Captain Cook Monument.

Please note this port is accessed by tender boats. Boarding and disembarking tender boats may involve steps and uneven surfaces. While cruise lines strive to provide ease of access, accessibility options can vary at different tender ports.





25-DAY CRUISE PACKAGE | ALL INCLUSIVE ALASKA TO HAWAII CRUISE

The Itinerary

Passengers with mobility concerns are encouraged to inquire about specific arrangements and consider their individual needs when participating in tendering activities.

Overnight: Celebrity Cruises' Celebrity Edge
Meals included: Breakfast; Lunch; Dinner

Day 19 Overnight: Honolulu, Hawaii
Arrives: 07:00 - Overnight

Home to most of Oahu's population, the port city of Honolulu extends across the southern shores of the island and offers multiple fascinating attractions. From Pearl Harbor to Iolani Palace, the only royal palace in the United States, there's so much to discover on a cruise to Honolulu. Visit the Honolulu Museum of Art for beautiful art collections that reflect Hawaii's contemporary cultural landscape, including superb Asian art and fascinating Pacific and Polynesian artifacts. Experience the Hawaiian tropical rainforest on a short 2-mile hike along the Manoa Falls Trail or visit the 200-acre Lyon Arboretum, which has one of the largest collections of palm trees in the world and over 5,000 tropical species flourish. Then, head over to in Honolulu's Chinatown neighborhood for tasty noodles, juicy dumplings, and fresh seafood.

Overnight: Celebrity Cruises' Celebrity Edge
Meals included: Breakfast; Lunch; Dinner

Day 20 Disembark: Honolulu, Hawaii
Disembark

After breakfast, disembark Celebrity Edge and make your own way to your hotel accommodation. The remainder of the day is yours to enjoy at leisure.

Optional Activity: Private Transfer

Enjoy a private transfer from Honolulu cruise terminal to hotel. Please see current pricing in important information.

Overnight: Outrigger Waikiki Paradise Hotel, or similar
Meals included: Breakfast

Day 21 Honolulu, O'ahu
Enjoy a day at leisure in Honolulu.

The big, blue Pacific and stunning Ko'olau mountain range serve as a dramatic setting for Hawaii's largest city. Climb to the top of Diamond Head, take a romantic sunset stroll on Waikiki Beach or catch a glimpse of history by visiting Pearl Harbor and the National Memorial Cemetery of the Pacific.

Overnight: Outrigger Waikiki Paradise Hotel, or similar
Meals included: None

Day 22 Honolulu, O'ahu

Overnight: Outrigger Waikiki Paradise Hotel, or similar
Meals included: None

Day 23 Honolulu, O'ahu



25-DAY CRUISE PACKAGE | ALL INCLUSIVE ALASKA TO HAWAII CRUISE

The Itinerary

Overnight: Outrigger Waikiki Paradise Hotel, or similar

Meals included: None

Day 24 Honolulu, Hawaii, USA - Australia (or New Zealand)

Today, say your goodbyes to the beautiful Hawaiian islands. At the appropriate time, make your own way back to the airport for your flight home.

Optional Activity: Private Transfer

Enjoy a private transfer from hotel to airport. Please see current pricing in important information.

Meals included: In-Flight

Day 25 Arrive in Australia (or New Zealand)

Welcome home! We hope you have enjoyed your time

Meals included: In-Flight



25-DAY CRUISE PACKAGE | ALL INCLUSIVE ALASKA TO HAWAII CRUISE

Tour Inclusions

HIGHLIGHTS

Embark on a back-to-back cruising adventure aboard the state-of-the-art Celebrity Edge

Enjoy time at leisure in Seattle before your 7-night Alaska cruise

Cruise the wild beauty of Alaska's Inside Passage & visit Ketchikan, the 'Salmon Capital of the World' & its majestic totem poles

Witness nature's grandeur sailing past Endicott Arm Fjord's granite mountains, cascading waterfalls & more

Look for spectacular calving displays of Dawes Glacier, home to playful harbour seals

Explore Juneau, Alaska's capital, offering a chance for thrilling glacial dogsled adventures

Visit Skagway's gold rush history through its restored 19th-century buildings

Savour the colonial charm of Victoria, British Columbia, nestled on scenic Vancouver Island

Embark on a 10-night cruise to the sun-soaked, tropical islands of Hawaii

Immerse yourself in onboard culinary delights, from interactive Le Petit Chef to the sophisticated Fine Cut Steakhouse

Delight in dynamic entertainment with spectacular production shows, live music & diverse activities onboard

Uncover the Big Island's wonders in Hilo, home to the breathtaking Rainbow Falls & the dramatic landscapes of Volcanoes National Park.

Discover Kailua Kona, the former seat of King Kamehameha's empire & its world-renowned coffee plantations

Dock in Honolulu, Oahu ready to explore historic Pearl Harbor, regal Iolani Palace, iconic Diamond Head & the buzz of Waikiki Beach

FLIGHTS

Return international full-service flights (economy class), surcharges may apply

CRUISE

Enjoy back to back, all-inclusive cruises aboard Celebrity Cruises' Celebrity Edge

7-night Alaska Dawes Glacier & Inside Passage Cruise

10-night Hawaii Cruise

Experience unparalleled entertainment onboard with captivating shows, live music & engaging activities for all ages

Includes gratuities, a classic beverage package & a basic Wi-Fi package

ACCOMMODATION

2 nights of 4-star accommodation in Seattle, Washington, USA

4 nights of 3-star accommodation at Outrigger Waikiki Paradise Hotel, Honolulu, Hawaii, USA, including resort fees

DINING

49 meals included while cruising

ESSENTIALS

Airport, cruise & port taxes & surcharges

Mandatory gratuities included while cruising

Important Information

**Please note: All information provided in this brochure is subject to both change and availability. Prior to purchase please check the current deal for up-to-date information. If you have already purchased this deal, the terms and conditions on your Purchase Confirmation apply and take precedence over the information in this brochure.*

Booking Information

After purchase, you will receive a receipt and a Purchase Confirmation, directing you to an online Passenger Information Form. You must complete the Passenger Information Form within 72 hours of purchase.

Any special requests, preferences and optional extras MUST be clearly stated in your Passenger Information Form. Any change requested after submitting your Passenger Information Form cannot be guaranteed, is strictly subject to availability and will incur surcharges as outlined in the Schedule of Fees below.

Please note: All countries and territories have different entry requirements in relation to vaccinations, quarantine/isolation periods and travel restrictions. Due to the evolving nature, we would ask all of our customers to monitor, meet and adhere to the specific requirements of their intended destination(s) in the lead-up to and immediately before travel, as well as any requirements post-travel upon their return.

Our Policies

Cancellation and Refund Policy

By placing a booking with us, you acknowledge the following important information:

- **we act as your booking agent;** TripADeal is a booking services provider, and curates the Travel Offers available on our website. We act as your booking agent, and we receive payment for the Booking Services as part of the booking price, however, we do not provide any of the Travel Services (flights, accommodation, tours or other products or services) included in your booking – the Travel Services are provided by a number of third party Travel Suppliers.

- **each booking is unique;** our Travel Offers are made up of a variety of different components and are, during the booking process, uniquely tailored to suit your requirements, for example, departure dates and ports, flight and room upgrades, tour inclusions, etc.

- **changes/modifications to your booking may not be possible;** once your booking has been made, changes or modifications may not be possible, and where possible, may incur a fee. It is important to ensure that the information you provide during the booking process is accurate and up to date, and that you read the Travel Offer carefully before placing your order.

- **Travel Offers are a package;** our Travel Offers have been curated into package offerings and must be used as a package – individual components cannot be used independently of the full package offering.

- **our Travel Offers are generally non-refundable;** in order to provide great value Travel Offers, we work with a variety of Travel Suppliers to find the best deals – this often means the Travel Suppliers' offerings are non-refundable to ensure the best price. We recommend that you obtain travel insurance as soon as you make a booking with us.

To read more about our Cancellation and Refund Policy, please [click here](#).

General Terms and Conditions

By placing your booking with us, you acknowledge and agree to our [Terms & Conditions](#), [Privacy Policy](#) and [Cancellation Policy](#).

Offer Essentials

This Travel Offer is valid for travel on selected dates until the 9th September 2026.

This Travel Offer is priced per person based on a twin share.

Departure Dates & Surcharges

See checkout for live dates and availability.

Single Traveller Supplement

For solo travellers, a mandatory single supplement applies.

Deluxe Interior: \$6,250

Oceanview: \$6,750

Infinite Veranda: \$8,950

Concierge Class: \$9,250

Please note: Accommodation for single customers who are travelling on a tour or cruise package may be in a single room, depending on availability.

Child Policy

- No child discounts are offered. The full price applies to all children travelling with their parents.
- Valid for children 2 years old and over.

Please note: Children must be accompanied by a responsible adult 21 years old and over to travel. No unaccompanied minors are allowed.

Flights

Departure Cities

Sydney, *Melbourne, *Brisbane, *Adelaide, *Perth, *Auckland

Departure City Surcharges

Melbourne: \$150 per person

Brisbane: \$250 per person

Adelaide: \$400 per person

Perth: \$1000 per person

Auckland: \$800 per person

International Flight(s)

Full-Service Airline(s) Used

- Cabin Class: Economy Class

Please note: We cannot accommodate one-way flights. Travellers must take all included flights within the package, and any flights intentionally forfeited will result in later flights being subject to cancellation.

Preferred Airline Surcharge

- Cabin Class: Economy Class
- Qantas: \$300 per person

Please note:

- *Preferred airlines are subject to availability. If we are unable to fulfil your request, the above extra cost will be refunded.*

Important Information

- On any upgrade purchase, short-haul flights and domestic flight sectors are not guaranteed, subject to aircraft configuration.
- In the event that a purchased stopover package and a purchased preferred airline upgrade are not compatible, you will have the option to receive a refund for the preferred airline upgrade or be offered an alternative stopover city option, e.g if you choose to fly with Singapore Airlines you cannot stopover in Dubai.
- Preferred airline refers to the marketing carrier and could include codeshare partners.

Arrive Early and Stay Behind Options

Arrive Early

Seattle - From \$300 per person, subject to availability.

Stay Behind

Honolulu - From \$300 per person, subject to availability.

Please note:

- This fee does not include extra nights' accommodation, meals or airport transfers.
- Flight booking changes or cancellations after air tickets have been issued are not guaranteed and may incur additional fees and fare difference, subject to the airline cancellation and change policies.
- Flight changes are subject to availability at the time of booking.
- A high-season Arrive Early or Stay Behind can be purchased for an additional charge, subject to availability. For pricing, please refer to the cart.
- You can arrive early, up to 60 days before your package's start date, and/or stay behind until 60 days after your package's end date. Should you wish to arrive earlier or stay behind for more than 60 days, please contact us to request availability. Additional costs may apply.
- High season surcharges apply to flights departing between the below date ranges:
- 15th September 2025 - 12th October 2025

- 1st December 2025 - 19th December 2025
- 20th December 2025 - 4th January 2026
- 5th January 2026 - 31st January 2026
- 3rd April 2026 - 20th April 2026
- 26th June 2026 - 17th July 2026
- 18th September 2026 - 9th October 2026
- 12th December 2026 - 18th December 2026
- 19th December 2026 - 3rd January 2027
- 4th January 2027 - 26th January 2027

Stopover Packages

* Not available

Flight Class Upgrades

Business or Premium Economy Class: For pricing, please refer to the payment cart at checkout.

Please note:

- Flight upgrades are subject to availability and pricing changes (if we cannot fulfil your request, the upgrade cost will be refunded).
- On any upgrade purchase, short-haul flights and domestic flight sectors are not guaranteed, subject to aircraft configuration.

Outbound Flights

Please note: Due to flight scheduling and availability, some departures may occur on Day 0. Affected customers must be available to depart the day before. Flight times will be indicated on your final documents, issued 4-6 weeks before departure.

Missed Flights

If you fail to arrive for your outbound flight, you risk all flight and land arrangements in your destination being automatically cancelled by the airlines and land operator, respectively. Additional fees may apply to reinstate these services. If you miss your flight for whatever reason, please contact us as soon as possible to make arrangements.

Cruise

Celebrity Cruises' Celebrity Edge

Celebrity Edge® marked a turning point in ship design. From the Magic Carpet™ to the private plunge pools in the Edge® Villas, Celebrity created the most refined ship at sea. You'll never feel more connected to the ocean and the destinations you'll visit than aboard Edge®. It takes luxury, culinary experiences and service to a whole new level.

Edge Class pushes the boundaries of cruise ship architecture from bow to stern, and everywhere in between. From the Parabolic Ultrabow designed to slice more efficiently through the water, to the urban condo-inspired accommodations to the industry-first Magic Carpet®, Celebrity reinvented what's possible on a Celebrity Cruises® vacation. Celebrity also carefully selected a team of the world's best designers, based on their portfolios as well as their experience with cruise ships and cruising.

For modern adventurers, travel isn't a spectator sport. It's about being fully immersed in new destinations and cultures without sacrificing comfort and style. Celebrity Cruises® knows this. After all, they have set the standard for luxury travel. And now they've made the destination experience even more immersive, starting right on board. From its unique outward-facing design to the industry-first Magic Carpet® that reaches heights of 13 stories above sea level, Celebrity Edge® breaks from traditional ship design. Here, predictability and convention are stripped away, returning luxury sea travel to its very essence: simple, beautiful, imaginative encounters that leave you relaxed, refreshed, and inspired by the world around you. Brilliant innovations give you open-air access to the sea, whenever you wish. The latest technology lets you precisely adjust nearly every comfort feature in your stateroom, suite or villa. Reimagined spaces feature larger living areas, bigger bathrooms, and a king-size bed in 99% of our rooms—an industry first for premium cruise lines—plus Celebrity's eXhale® bedding featuring the Cashmere™ Mattress. With the widest range of

Important Information

staterooms in the Celebrity fleet, there's a room on Celebrity Edge® perfect for your vacation needs.

Spa Treatments

Your holistic experience begins the moment you step on board, with the ocean as the backdrop to your wellness journey. Whether you seek or desire activity, there's no better way to find your ultimate state of well-being than miles away at sea. Start with a good night's rest on luxurious eXhale® bedding designed exclusively for Celebrity. Elevate your endorphins with first-at-sea fitness programs, including F45® fitness classes and Peloton® cycling. Complement your journey with programming from Celebrity's Women in Wellness panel, comprised of some of the most influential wellness leaders. Step into The Spa for an escape within your escape. Destination-inspired Inspired Treatments, unique as the places you'll visit, are just the beginning of the more than 120 rejuvenating treatments on offer. And, at the heart of The Spa, the SEA Thermal Suite is a playground for the senses with eight distinct spaces to navigate your own path to wellness. At every turn of your sailing, you'll find ways to fully restore yourself. (Charges apply)

Accessible Cruising

Celebrity's extensive attention to detail creates a vacation experience that knows no boundaries. Every effort is taken to deliver easy ship access and an unrivalled cruise vacation to all guests.

Dining Experience

World-class restaurants that open your world. Celebrity designed Celebrity Edge® to change the way you experience the world, and their culinary philosophy follows the same line of thinking. They've turned focus to the destinations visited, bringing the flavours of the world to you—right on board. 29 unique food and beverage experiences crafted by a Michelin-starred chef speak to all of your senses in distinctly different ways. You won't find another dining experience like this at sea – or on land for that matter.

Onboard currency:

USD\$

Cabins/Staterooms:

All Staterooms Feature

- King-sized bed** - Relax on a breathable, hypoallergenic, eucalyptus-treated, eco-friendly Cashmere Mattress with Celebrity eXhale bedding.
- Bathroom - Enjoy room to roam—10% more room than the Solstice Series—with a larger modern shower, custom products, and 100% cotton towels and robes.
- Floor-to-ceiling sliding glass doors
- Sitting area with sofa
- Storage space - Celebrity has optimised the space in your wardrobe and bathroom and doubled the capacity of your dresser drawers.
- Veranda with lounge seating
- Individual safe
- Dual voltage 110/220 air-conditioning
- Mini-fridge*
- Hair dryer
- MyTV - Get live TV, video on demand, ship information, and your folio. Display content from any mobile device that has streaming Wi-Fi service.
- In-room automation - Control everything from lighting to shades to temperature—with a simple tap on a touch screen.
- Celebrity Cruises App - Use your own personal smartphone for keyless entry, controlling the TV and in-room automation.

**Bed as large or larger than the average standard international king-size bed.

Inside Stateroom

Approximate size: 17-19m²

With ample living space, bigger bathrooms, and more drawer space, Inside Staterooms become your home away from home while on board.

Ocean View Stateroom

Approximate size: 19-22m²

Larger living spaces and expansive views make Ocean View Staterooms the ideal place to unwind at sea.

Edge Stateroom with Infinite Veranda

Approximate size: 22.5m²

Approximate balcony size: 4m²

The Infinite Veranda takes your room right to the water's edge, giving you open air access to the sea with the touch of a button. These staterooms feature the latest in design and technology, and they're 23% larger than the award-winning Solstice Series veranda staterooms. Edge Series accommodations feature the latest technology to precisely adjust nearly every comfort feature. Veranda Staterooms add the luxury of outdoor space to enjoy sweeping ocean views.

Concierge Class

Approximate size: 22.5m² Approximate balcony size: 4m²

A dedicated concierge is always just steps away from your room to assist with your vacation needs. Attend exclusive events, including a Welcome Aboard Concierge Class Lunch and Destination Seminar. Then there's the room, the Infinite Veranda® takes the whole room right to the water's edge. Here, you'll find it's little details so meticulously thought out that they truly make a world of difference. It's a room that's so much more than a room—it's an experience.

Please note:

- All cabins are subject to availability; some cabins may have restricted views.
- Cruise cabins are booked on a guaranteed basis and are assigned by the cruise line prior to departure.

Cruise Arrival and Departure Times:

Please keep in mind that the provided cruise arrival and departure times are an approximate and will be finalised upon receipt of your cruise tickets.

Accommodation

Accommodation Used:

3 & 4-star Properties (Self-Rated)

Seattle, United States: Coast Seattle Downtown Hotel by APA

Honolulu, United States: Outrigger Waikiki

Important Information

Paradise Hotel

Please note: Accommodation/rooms offered are based on a lead-in room type and are subject to availability based on seasonality. In the instance a property is not available, a similar standard of accommodation will be provided. Properties will be confirmed and included in your travel pack, which you will receive 4-6 weeks before travel.

Extra Nights

Not available.

Please note: If you are interested in booking additional nights of accommodation pre or post-tour, please wait until you receive your travel documentation approximately 4-6 weeks before departure for the confirmed list of hotels. If booking your own additional accommodation directly with the hotel, please be aware that you may be required to change rooms at the start/end of your tour.

Maximum Room Capacity

2 people.

Triple Share

Not available.

Bedding Configuration

Twin or double (subject to availability).

Optional Tours/activities

Day 1: Private transfer from airport to hotel: \$129 per person twin share, \$258 per person solo

Day 3: Private transfer from hotel to port: \$109 per person twin share, \$218 per person solo

Day 20: Private transfer from port to hotel: \$119 per person twin share, \$238 per person solo

Day 24: Private transfer from hotel to airport: \$119 per person twin share, \$238 per person solo

Please note:

- *Optional private arrival or departure transfers (Day 1 or Day 24) cannot be booked when an arrive early or stay behind has been arranged*

- *The optional tours listed above must be purchased on checkout or over the phone before submitting your passenger information form (subject to availability).*
- *Some tours or shore excursions require minimum numbers to operate.*
- *Shore excursions can be booked/reserved directly with the cruise line before travel (subject to availability)*
- *Shore excursions can also be booked whilst onboard (subject to availability).*
- *Shore excursion programmes and itineraries may vary depending on local conditions and/or any unforeseen events concerning the timing on the day of the tour. Some excursions are very popular, and therefore availability cannot always be guaranteed, it is advisable to book in advance to avoid disappointment.*

Exclusions

- Visa fees and requirements
- Domestic transfers and flights not stated in the deal offer
- Meals/beverages not stated in the deal offer
- Optional gratuities/tipping
- Optional activities/tours
- Personal expenses
- Travel insurance
- Any costs associated with an interruption to your tour as a result of an airline schedule change or cancellation
- Mandatory city tax

Gratuities / Tipping

Please note: Tipping for services provided is always a matter of personal discretion; however, please be aware that many locals consider tipping part of their normal remuneration, and they may approach you for payment; there's no need to be intimidated by the request.

Cruise

Gratuities (tips) are included for the cruise staff's services throughout this tour's cruise component. Some optional purchases on board, such as spa services and specialty dining may incur additional service charges. If you have any questions

regarding the gratuities on your cruise, please speak to the guest services staff onboard the ship.

Other Important Information

TOUR GUIDE VS. TOUR LEADER

Tour Guide:

Often locals with intimate knowledge of an area, its culture, and history. Their role entails providing commentary, routing the tour, and seeing that people have a good time. They are a licensed, qualified expert who supplies specific information on the history, art, architecture and culture of the city/village/attraction where they are guiding the tour. The guide meets the group at the required place and leaves it at the end of the tour; they do not travel with the group.

Tour Leader:

An experienced person tasked with ensuring the smooth operation of tours, as well as providing practical support to passengers throughout the whole trip. Their role primarily includes assisting with accommodation, transportation between locations, and communication with tour guides at each stop. A tour leader may provide general guidance around a city or village and offer information on the place visited on the bus. However, they are not required to have specific art, architecture, or historical knowledge. They are not allowed to provide a guided tour or commentary of a city/village/attraction once there and, if caught doing so, can be fined.

Please note: Tour leaders/guides are not a standard inclusion in all travel offers. Tour leaders/guides will only be made available when required to enhance the experience of the destination featured.

CLIMATE & AVERAGE TEMPERATURES

Seattle

September in Seattle offers some of the most pleasant weather of the year, providing a comfortable transition from summer to autumn. Daytime temperatures

Important Information

are generally mild, ranging from 20°C to 22°C and gradually cooling as the month progresses, while evenings see lows of around 11°C to 12°C. While sunshine remains plentiful, particularly in the earlier part of the month, the chance of rain does increase, with an average of 36mm to 68mm of precipitation falling over 7 to 9 days, typically as light drizzle rather than heavy downpours. Overall, September is an excellent time to visit Seattle, with conditions that are usually ideal for exploring, though it's always advisable to be prepared with layers and a waterproof jacket.

Alaska

September in Alaska marks a distinct shift to autumn, characterised by cooler temperatures, increasing rainfall, and the emergence of vibrant fall foliage. While coastal areas like Juneau remain relatively mild (11°C to 15°C daytime highs, 6°C to 9°C lows) but very wet, interior regions like Fairbanks experience a more significant cooling trend, with daytime highs around 8°C to 13°C and nighttime lows often dropping below freezing (2°C or colder). Snowfall becomes possible, especially at higher elevations and later in the month. Despite the cooler and wetter conditions, September is popular for its striking autumn colours and the increased chance of viewing the Northern Lights due to shorter daylight hours. Visitors should pack warm, waterproof layers to prepare for variable weather across the vast state.

Hawaii

September in Hawaii offers consistently warm and pleasant weather across its major islands, though microclimates create notable differences in rainfall. Honolulu on Oahu and Kona on the Big Island, both located on drier, leeward sides, experience abundant sunshine and hot conditions, with average daytime temperatures typically ranging from 26°C to 32°C and nighttime lows around 23°C to 27°C. In contrast, Hilo, on the windward side of the Big Island, is significantly wetter, receiving more frequent showers, though still enjoying warm temperatures between

22°C and 28°C during the day and 20°C to 22°C at night. Across the state, September is characterised by high humidity, comfortable ocean temperatures averaging around 27°C, and generally favourable conditions for outdoor activities, with trade winds helping to moderate the heat.

Weather

We always suggest referring to an online source for the most up-to-date weather information for your destination/s.

FLIGHTS

Seat Selection & Frequent Flyer Points:

We do not arrange seat selection. It is essential to highlight that some airlines do not allow pre-selected seats. We strongly suggest you contact the airline directly with seating allocation requirements and/or arrive at the airport earlier to arrange your seating. While we do not add frequent flyer member details to bookings, you can do this directly with the airline once you have your flight information.

Passport Validity:

Customers must provide valid passport details either at the time of purchase or no later than 90 days before the departure date. Failure to do so may result in the cancellation of the booking. Customers will be responsible for any costs and fees incurred in this instance.

CRUISE

Embarkation / Disembarkation:

- Begins approximately 2 hours after docking.
- Due to security reasons, all guests must be on board 2 hours before sailing.
- Itineraries are subject to change at any time without notice.
- Check your specific sailing for exact departure and arrival times. All times are local to the port.

Please note: Strict Covid-19 terms may also apply regarding proof of insurance covering Covid-19 and/or vaccination. Please refer to the cruise lines' terms and conditions for further information before boarding.

Cruise Loyalty Discounts:

Please note: Travellers must contact the cruise line directly upon receiving their travel documents in order to request any membership benefits they may be entitled to.

Meals:

For meals not included, the tour leader (when available) will offer assistance with reservations, suggestions and directions to local restaurants. It is your responsibility to notify us of any dietary requests/requirements.

Please note: We will do our best to meet your requests/requirements; however, we cannot guarantee that we will always be able to.

Luggage:

You will be responsible for all your personal belongings whilst on tour. You must carry your own luggage from the vehicle to the hotel room and back to the vehicle. The driver will assist with the uploading and unloading of bags from the vehicle.

OTHER

Mobility:

If you require wheelchair access please contact our friendly sales and service team to inquire on your behalf.

Fitness Level Required:

Adventure (and spontaneity) create some of the best travel memories. Bear in mind, your home schedules and timings might not be adhered to on tour - it's all part of the fun!

A relaxed level of fitness will be required. Expect a comfortable pace of touring with a focus on leisure time and gentle activity. This may include city tours, the ability to walk up and down small flights of stairs and gentle slopes. You will be responsible for your own luggage and have the ability to board all modes of transport without assistance. Please note: Some areas may be inaccessible to wheelchairs or mobility scooters, with personal walking sticks and other aids required should they be needed. Although some assistance may be

Important Information

available, every traveller should be self-reliant during all aspects of their travel

Please note: It is expected that every traveller must be self-reliant and able to undertake all aspects of their own travel. Please speak to your booking agent about your personal circumstances and any assistance requirements to ensure this tour is right for you.

Please note: If you have any concerns, please consult your healthcare provider prior to purchase/travel.

Yellow Fever:

A valid international certificate of vaccination against Yellow Fever is required in many countries. You may need to present this on arrival at the airport or border crossing. Some countries will refuse entry if you are unable to present your certificate. It's also common for your home country to request a Yellow Fever certificate upon arrival.

You must check with your doctor well before leaving home about the Yellow Fever requirements for the countries you'll be visiting.

Sightseeing:

Please note: If entry to a site is affected by changes in operating hours or public holiday closures, your itinerary, where possible, may be adjusted, or a similar activity will be offered in its place (subject to availability).

Shopping:

Shopping overseas can be a daunting and confusing experience, especially when there is a language barrier. Please be very cautious when foreign currencies and prices are involved. If paying by credit card, please pay close attention to the amount you are being charged and keep all your receipts.

Do not make any purchases you are not comfortable with or feel pressured into. If you are uncertain or need assistance with the language barrier, please seek assistance from your Tour Guide/Leader. Please refer to our [Terms and Conditions](#) regarding shopping for further information.

Visas

Canada

Australian and New Zealand passport holders must apply for an electronic travel authorisation (eTA) before travelling to Canada by air. An Electronic Travel Authorization (eTA) is an entry requirement for visa-exempt foreign nationals travelling to Canada by air. An eTA is electronically linked to a traveller's passport. It is valid for up to five years or until the passport expires, whichever comes first. If you get a new passport, you need to get a new eTA.

United States of America

Australian passport holders must obtain an "ESTA" visa waiver in order to enter or transit in the United States.

Please note: You may be required to obtain a visa if you do not meet the eligibility requirements of the ESTA program. Please see <https://esta.cbp.dhs.gov> for full eligibility requirements and applications.

Important:

- *Please start arranging your visa three weeks before departure to account for any delays due to consulate operating hours.*
- *Visa rules are subject to change. Please check with the nearest embassy, consulate or immigration department of the destination/s you are visiting once you receive your travel documentation to ensure you have the most up to date information.*
- *It is your responsibility to be travel-ready and ensure that you are aware and comply with any destination or travel requirements, including the validity of all required travel documents.*
- *Passengers who are not Australian citizens must also check with the respective consulate or visa agency to determine what their visa requirements are and what personal identification is required.*

- *It is also important to note that some areas of employment, such as journalism, government authorities and charity organisations, may have additional restrictions in applying for visas. This may, in turn, affect the type of application required.*

Travel Insurance

Embarking on your next trip is exciting, and while you hope the unexpected does not happen, it is best to be prepared. We strongly recommend you take out travel insurance when making your booking. Whether it's a potential medical emergency, a flight cancellation, a delayed suitcase, or an unforeseen event, it's important to ensure you're adequately protected. For more information or advice visit <https://www.tripadeal.com.au/travel-insurance>

Schedule Of Fees

Voluntary Changes

This includes booking changes requested by you, including but not limited to those changes requiring an airline ticket or a Purchase Confirmation reissue.

- Changes - \$100 per booking and any additional charges applied by the airline/cruise company/accommodation/other travel providers.

Name Changes Due To Passenger Error

- If the incorrect name has been provided, charges of \$100 per booking and any additional charges applied by the airline/cruise company/accommodation/other travel providers.

Supplier Fees

In the event the tour package you have purchased is unable to proceed, and/or a Travel Supplier is unable to fulfil the tour due to external circumstances (Limitation of Liability e.g. a Force Majeure event), there may be a fee or amount of money that is withheld by our Suppliers and is unrecoverable. This may be due to non-refundable airline tickets, cancellation penalties with cruise cabins or unrecoverable payments with our land/

Important Information

accommodation partners. If refunds are not available from Suppliers, we will endeavour to obtain a travel credit on the best terms available and communicate these outcomes to you. In the event we are unable to obtain a refund or travel service credit, or part thereof, this cost is passed on to the customer as a Supplier Fee.