



# Cruise Patagonia & Cape Horn

BUENOS AIRES • SANTIAGO • PUNTA ARENAS • USHUAIA

## The Offer

Search for wildlife in the untamed wilderness of Argentina and Chile on an epic adventure to the edge of the world. Visit Buenos Aires, Montevideo, Santiago and more. Cruise for 15- nights aboard Holland America's Oosterdam to discover the Falkland Islands, Cape Horn, the Beagle Channel and beyond.

Immerse yourself in Buenos Aires' music and dance culture before boarding Holland America's Oosterdam. Spend a day among La Rambla's treasure trove of Art Deco buildings in Montevideo, Uruguay, then investigate the maritime history of Stanley on the remote Falkland Islands. Soak in ocean breezes from Oosterdam's pool deck and indulge in fine dining from a variety of world-class restaurants. Join in the fun onboard with live music venues, dazzling theatre shows, BBC Earth in concert and more.

Journey to Cape Horn in the Tierra del Fuego archipelago, the legendary land of fire, where the Atlantic and Pacific Oceans dramatically converge into one. Dock in the world's southernmost city of Ushuaia, Argentina, before cruising the Beagle Channel and Glacier Alley's ice formations and snow capped mountains. Search for Magellanic penguins as you sail to Chile's Punta Arenas, gateway to Patagonia's stunning

landscapes. Keep your camera handy for playful dolphins, seals and orcas in the Sarmiento Channel, and stunning views of fjords and glaciers while cruising through the Cockburn Channel.

Admire the turquoise colours of South America's largest glacier, Pio XI, then dive into the maze of fjords, glaciers and forested islands of the Darwin Channel. Visit Puerto Montt where Mapuche indigenous communities make one of the world's most photogenic landscapes their home. Disembark in San Antonio and transfer to the capital of Santiago to explore the Spanish colonial charm of Plaza de Armas with time at leisure.

Make this your next unforgettable adventure with return international full-service flights, a 15-night Holland America cruise, 3 nights of 4-star accommodation, 47 meals and more.

Itinerary 2 follows the reverse route from San Antonio to Buenos Aires, with slight variations in ports compared to Itinerary 1. Please refer to the complete itineraries below for full details.

Offer available for a limited time or until sold out. TRIP A DEAL PTY LTD: 50149240433

Updated: 02 Jan 2026 14:35:37

Have a question about this deal? We're here to help.  
Call our friendly team on 1300 158 912



BUENOS AIRES ● SANTIAGO ● PUNTA ARENAS ● USHUAIA

## The Offer

Want more? Cabin upgrades and options to Arrive Early and Stay Behind are available.

Offer available for a limited time or until sold out. TRIP A DEAL PTY LTD: 50149240433

Updated: 02 Jan 2026 14:35:37

Have a question about this deal? We're here to help.  
Call our friendly team on 1300 158 912

2

FREQUENT  
FLYER 







## 21-DAY CRUISE & TOUR PACKAGE | CRUISE PATAGONIA & CAPE HORN

### The Itinerary

#### Itinerary 1 - Buenos Aires to Santiago

##### Day 1 Australia (or New Zealand) - Buenos Aires, Argentina

Today depart from Australia (or New Zealand) to Buenos Aires, Argentina. Upon arrival, be welcomed and transferred to the hotel where you can enjoy the remainder of the day at leisure.

*Please note: Due to flight scheduling and availability, some departures may occur on Day 0. Affected customers must be available to depart the day before. Flight times will be indicated on your final documents, issued 4-6 weeks before departure.*

**Overnight: Hotel Grand Brizo, or similar, Buenos Aires**  
**Meals included: In-Flight**

##### Day 2 Buenos Aires, Argentina - Board Holland America's Oosterdam

Enjoy the morning at leisure before being transferred to the cruise terminal at the appropriate time to board Holland America's Oosterdam.

##### Holland America's Oosterdam:

The Oosterdam, the second in Holland America's distinguished Vista Class, blends high style with inviting comfort. You'll find thoughtful upgrades and captivating artwork throughout the ship. Beyond the expansive ocean views and spacious staterooms, there's a wealth of activities to enjoy onboard. Every stateroom ensures your comfort with daily housekeeping, complimentary 24-hour room service, premium Elemis bath products, luxurious bathrobes, ample storage, fresh fruit upon request, a TV with on demand movies and programming, and more.

*Please note: The ship will be docked in port overnight and depart the following evening at 18:00. Enjoy the evening in Buenos Aires and continue exploring this eclectic city.*

**Overnight: Holland America's Oosterdam**  
**Meals included: Breakfast; Dinner**

##### Day 3 Buenos Aires, Argentina Depart: 18:00

In the early 20th century, Buenos Aires, Argentina, gained immense wealth when it began shipping its pampas-raised beef around the world. It quickly entered the club of great world cities, and a slew of attractions and architectural jewels soon arose. Since that time, Buenos Aires continues to fascinate and entertain visitors, both for its chaotic energy and for its sheer urban beauty. The Belle Époque grandeur and enormous tracts of greenery continue to be a drawcard. Any list of things to do in Buenos Aires would begin with its many walkable neighbourhoods - Palermo especially stands out, thanks to creative residents who have pushed the restaurant scene well beyond beef. Porteños, as the locals are called, may be of Spanish, Italian, Jewish or Middle Eastern descent, a mix of cultures is reflected in the city's dialect, foods and pastimes.

Looking beyond the city's sights, Buenos Aires is known as the birthplace of tango, and fans come here from around the world to take part in or watch the milongas (dance events). Argentines are world leaders in polo, and as the sport gains global celebrity, it draws the interest of more and more travellers.





## 21-DAY CRUISE & TOUR PACKAGE | CRUISE PATAGONIA & CAPE HORN

### The Itinerary

#### Itinerary 1 - Buenos Aires to Santiago

Overnight: Holland America's Oosterdam

Meals included: Breakfast; Lunch; Dinner

##### Day 4 Montevideo, Uruguay

Docked:

Arrives: 8:00 - Departs: 18:00

Uruguay's capital, Montevideo, may not have the hustle and bustle of Argentina's capital Buenos Aires, yet it shares that city's cosmopolitan atmosphere and excellent steak houses. There is a relaxed feel to this more low-key counterpart with a surprising mix of neighbourhoods. The Ciudad Vieja, with its grid of streets on a peninsula separating the Río de la Plata from the harbour, is the colonial heart. It has recently undergone a renaissance with restaurants, bars and clubs opening in historic buildings that have been meticulously restored. Montevideo's downtown offers a treasure trove of Art Deco buildings, while the newer eastern suburbs may evoke Miami, USA. Gleaming skyscrapers and open-air cafés overlook beaches that run for miles.

*Please note: Port arrival and departure times are subject to transit windows.*

Overnight: Holland America's Oosterdam

Meals included: Breakfast; Lunch; Dinner

##### Day 5 Cruising

Enjoy a sea day to explore the onboard activities and amenities. Why not catch a show at the World Stage or Rolling Stone Lounge, or try your hand at pickleball before enjoying a sundowner at one of the onboard bars (charges apply).

Overnight: Holland America's Oosterdam

Meals included: Breakfast; Lunch; Dinner

##### Day 6 Cruising

Overnight: Holland America's Oosterdam

Meals included: Breakfast; Lunch; Dinner

##### Day 7 Stanley, Falkland Islands (Islas Malvinas)

Tendered:

Arrives: 08:00 - Departs: 16:30

(times subject to weather conditions)

The world's southernmost capital, Stanley is located in the Falklands archipelago, consisting of two main islands, East and West Falkland, along with smaller islands nearby. Stanley is proud of its British heritage, evidenced everywhere from its red telephone boxes to its pubs. The Falklands were used as a base for ships hunting sperm whales for oil, followed by those hunting seals for fur in the early days of colonisation. Today in this remote British territory, fishing and tourism drives the economy.

*Please note: This port is accessed by tender boats - wheelchair access limited. Boarding and disembarking tender boats may involve steps and uneven surfaces. While cruise lines strive to provide ease of access, accessibility options can vary at different tender ports. Passengers with mobility concerns are encouraged to inquire about specific arrangements and consider their individual needs when participating in tendering activities.*





## 21-DAY CRUISE & TOUR PACKAGE | CRUISE PATAGONIA & CAPE HORN

### The Itinerary

#### Itinerary 1 - Buenos Aires to Santiago

**Overnight:** Holland America's Oosterdam

**Meals included:** Breakfast; Lunch; Dinner

##### Day 8 Cape Horn (Scenic Cruising)

For centuries this notorious ocean passage evoked dread in the hearts of sailors. Cape Horn is shaped by capricious weather, powerful winds and shallow waters, and is where the Atlantic and Pacific Oceans slosh violently into each other and Tierra del Fuego, or "land of fire," is where Chile and Argentina converge at the bottom of the world. Tierra del Fuego got its name from early sailors who saw the fires of the people who lived here burning on shore. For some 8,000 years, until as recently as the end of the 19th century, this was the home of the Yaghan and other indigenous groups.

Explorers Magellan and Drake left their mark and names here, as did Darwin, who sailed through on his great adventure on the HMS Beagle. Until the Panama Canal was built, Cape Horn was the only way for the great clipper ships to carry goods and gold between California and the East Coast.

*Please note: Cape Horn is a scenic cruising destination. Your ship will not dock on this day of the itinerary.*

**Overnight:** Holland America's Oosterdam

**Meals included:** Breakfast; Lunch; Dinner

##### Day 9 Ushuaia, Argentina - Beagle Channel & Glacier Alley (Scenic Cruising)

Docked: Ushuaia, Argentina

**Arrives: 07:00 - Departs: 15:00**

Dramatic, fantastical, otherworldly, this is the end of the world. Positioned at the southernmost tip of Argentina, this memorable port town is cradled between the pristine, towering Martial Mountains and accessed by the picturesque Beagle Channel (which was named for Darwin's famed vessel). Ushuaia is the capital of the Tierra del Fuego region, which is best described as a spectacular collection of superlative natural wonders. It's a veritable kaleidoscope of glittering glaciers, snowcapped mountains, dense forests, sparkling lakes and windswept plains spread across an archipelago of rugged islands.

The town itself is a maze of streets lined with low-slung buildings that all seem to meet at its heart, the port. Founded in 1884, the far-flung spot welcomed missionaries, gold prospectors and naval officers before becoming known primarily as a penal colony. After its closure under the infamous Argentine leader Juan Perón, the large jail was reconfigured to house one of the city's most popular museums (entry fees apply). Other current in-town attractions include a maritime museum and a museum dedicated to the region's natural history, as well as restaurants preparing local king crab (charges may apply).

##### Beagle Channel (Scenic Cruising):

Running through the Tierra del Fuego archipelago, the Beagle Channel is a calm, scenic strait that has become a hugely popular cruise destination. Named in 1830 after a charting voyage by the HMS Beagle, the ship that later became famous for carrying English evolutionary biologist Charles Darwin on his five-year journey of discovery, the channel is one of a trio of navigable passages around the tip of South America. Some 240 kilometres





## 21-DAY CRUISE & TOUR PACKAGE | CRUISE PATAGONIA & CAPE HORN

### The Itinerary

#### Itinerary 1 - Buenos Aires to Santiago

long, the channel extends from Nueva Island in the east to Darwin Sound and Cook Bay in the west. Its western end lies within Chile, and its eastern end forms a segment of the border between Chile and Argentina. By far the largest sight along the channel is the town of Ushuaia in Argentina.

##### Glacier Alley (Scenic Cruising):

Glacier Alley, or as it's more elegantly known, Avenue of the Glaciers, stretches along a good portion of the celebrated 240-kilometre-long Beagle Channel in the vast territory of Tierra del Fuego. As you travel into the Beagle Channel, the vital waterway follows the route that the famous HMS Beagle took with a young and then-unknown geologist and wildlife expert on board, Charles Darwin. You'll be captivated by one stunning glacier after another, each flowing down from massive mountain ranges and peaks such as the snowcapped one named for Darwin himself. Listen for the cracking sound of the blue ice as it tumbles into the channel or the rush of ice-melt waterfalls. Along with all these natural wonders, a visit to Glacier Alley comes with opportunities to see penguin rookeries, humpback whales and seals.

*Please note: Beagle Channel and Glacier Alley are cruising destinations. Once you depart Ushuaia, the ship will not dock again on this day of the itinerary.*

**Overnight: Holland America's Oosterdam**  
**Meals included: Breakfast; Lunch; Dinner**

##### Day 10 Punta Arenas, Chile

**Docked:**

**Arrives: 12:00 - Departs: 20:00**

Punta Arenas' windblown city near Chile's southernmost tip sits on the Strait of Magellan, which itself is positioned squarely between the Atlantic and Pacific oceans, exudes an "edge of the world" air. The city plays an important role in geographic, political and economic affairs in South America's so-called Southern Cone, formed by Chile and neighbouring Argentina. Punta Arenas, is gateway to the stunningly beautiful landscapes of Torres del Paine National Park and other attractions in Patagonia. Take the opportunity while in Punta Arenas to go penguin spotting on Isla Magdalena, kayak the Strait of Magellan, visit nearby farms or indulging in surf-and-turf specialties (here meaning fresh seafood and asado, or Chilean barbecue) at local restaurants (charges may apply).

**Overnight: Holland America's Oosterdam**  
**Meals included: Breakfast; Lunch; Dinner**

Offer available for a limited time or until sold out. TRIP A DEAL PTY LTD: 50149240433

Updated: 02 Jan 2026 14:35:37

Have a question about this deal? We're here to help.  
Call our friendly team on 1300 158 912







## 21-DAY CRUISE & TOUR PACKAGE | CRUISE PATAGONIA & CAPE HORN

### The Itinerary

#### Itinerary 1 - Buenos Aires to Santiago

##### Day 11 Sarmiento Channel (Scenic Cruising)

One of the main channels in Patagonia, the Sarmiento Channel runs in a north-south direction, starting at the Guía Narrows and finishing at the southern edge of Victoria Pass, where it joins the Smyth Channel. The Kawesqar people have inhabited this region for more than 6,000 years, but the channel was named for a more recent arrival, the Spanish explorer Pedro Sarmiento de Gamboa, who first navigated it between 1579 and 1580. The Chilean mainland lies to the east, and the islands of Esperanza, Vancouver and Piazzzi flank the channel to the west.

As elsewhere in the Chilean fjord region, the ragged coastline is cut with inlets set among snow-covered mountain ranges. In many places, massive glaciers run down to the sea. All kinds of marine animals, including Magellanic penguins, southern elephant seals, dolphins and orcas, can be seen along these shores.

*Please note: Sarmiento Channel is a scenic cruising destination. Your ship will not dock on this day of the itinerary.*

**Overnight:** Holland America's Oosterdam

**Meals included:** Breakfast; Lunch; Dinner

##### Day 12 Cockburn Channel (Scenic Cruising)

As you near the southern tip of South America, traveling along the Chilean or Pacific coast, you'll know that you're approaching the Cockburn (pronounced "CO-burn") Channel when you see the twin rocks that guard its entrance. The channel flows between the Brecknock Peninsula (the westernmost edge of Isla Grande de Tierra del Fuego) and a number of islands, including Clarence Island with its irregular coastline of dramatic sounds that reach deep into its interior. The channel is part of the route that connects the Strait of Magellan to the Beagle Channel, while along both sides of the waterway is one of the crown jewels of Chile's network of parks, Alberto de Agostini National Park.

The Cockburn Channel shares the same entrance to the Pacific as the Bárbara Channel. Because of its proximity to the open sea, you may experience some ocean swells as your ship navigates its length. The coastline here is rich in fjords and glaciers. The Pia Fjord is especially beautiful, as dozens of waterfalls cascade down the slopes into its waters. If you watch long enough, you may see huge chunks of ice calve off Pia Glacier and fall into the sea.

*Please note: Cockburn Channel is a cruising destination. Your ship will not dock on this day of the itinerary.*

**Overnight:** Holland America's Oosterdam

**Meals included:** Breakfast; Lunch; Dinner



## 21-DAY CRUISE & TOUR PACKAGE | CRUISE PATAGONIA & CAPE HORN

### The Itinerary

#### Itinerary 1 - Buenos Aires to Santiago

##### Day 13 Pio XI Glacier (Bruggen Glacier), Chile (Scenic Cruising)

Pio XI Glacier, also known as Bruggen Glacier, is one of the world's few advancing glaciers, located in Chile's Southern Patagonian Ice Field. Enjoy a short cruise of Pio XI Glacier before spending the rest of the day at leisure onboard the ship.

*Please note:*

- *Pio XI Glacier is a cruising destination. Your ship will not dock on this day of the itinerary.*

**Overnight:** Holland America's Oosterdam

**Meals included:** Breakfast; Lunch; Dinner

##### Day 14 Darwin Channel (Scenic Cruising)

Darwin Channel offers a breathtaking journey through Chile's maze of massive glaciers, narrow fjords and forested islands. It is named for biologist and naturalist Charles Darwin, an early visitor to the region. This route showcases nature's grandeur, offering Holland America's guests a unique perspective on Patagonia's lesser-known treasures.

*Please note: Darwin Channel is a scenic cruising destination. Your ship will not dock on this day of the itinerary.*

**Overnight:** Holland America's Oosterdam

**Meals included:** Breakfast; Lunch; Dinner

##### Day 15 Puerto Montt, Chile

**Tendered:**

**Arrives:** 08:00 - **Departs:** 17:00

Puerto Montt, the capital of the Los Lagos region of Chile, is often called the gateway to the country's glacial lakes, volcanic landscapes and surrounding national parks. The port is also home to an over-100-year-old German settlement as well as to indigenous communities of Mapuche people. While in Puerto Montt, take a fascinating look into Chile's diverse cultures and get a taste for the country's stunning scenery.

Puerto Montt is a fascinating introduction to southern Chile and the people who make their home in one of the world's most photogenic landscapes. From a stroll around nearby Puerto Varas overlooking Lake Llanquihue, one of Chile's largest lakes, to a meal in the local fishing village of Angelmó washed down with a traditional German-style white wine, Puerto Montt has much to offer during your leisure time (charges may apply).

*Please note: This port is accessed by tender boats - wheelchair access limited. Boarding and disembarking tender boats may involve steps and uneven surfaces. While cruise lines strive to provide ease of access, accessibility options can vary at different tender ports. Passengers with mobility concerns are encouraged to inquire about specific arrangements and consider their individual needs when participating in tendering activities.*

**Overnight:** Holland America's Oosterdam

**Meals included:** Breakfast; Lunch; Dinner

##### Day 16 Cruising

**Overnight:** Holland America's Oosterdam

**Meals included:** Breakfast; Lunch; Dinner







## 21-DAY CRUISE & TOUR PACKAGE | CRUISE PATAGONIA & CAPE HORN

### The Itinerary

#### Itinerary 1 - Buenos Aires to Santiago

##### Day 17 Disembark San Antonio, Chile - Santiago, Chile Disembark: 07:00

Disembark in the port of San Antonio, and be transferred to the hotel where you will spend the next 2 nights at leisure to uncover the best of Santiago's eclectic city.

San Antonio, a large, modern port serves Chile's capital, Santiago, a city with Spanish colonial charm and a vivacious spirit. Encircled by the Andes and the Coastal Range, Santiago is centred around the Plaza de Armas, with several of the city's landmarks - the 18th-century Metropolitan Cathedral, the Palacio de la Real Audiencia from 1808, the City Hall and the National Museum of History. Further afield, the picturesque old port and university town of Valparaíso and the colourful seaside resort of Viña del Mar lies an hour or so away, and in between, are valleys filled with some of Chile's most famous wineries, all inviting you to come and taste.

*Please note: Charges may apply to the above activities.*

**Overnight:** Pullman Santiago El Bosque, or similar, Santiago  
**Meals included:** Breakfast

##### Day 18 Santiago, Chile - Day at Leisure

Enjoy the day at leisure to independently explore Santiago's charm. We recommend heading to the Oasis Station to take the cable car atop Cerro San Cristobal in time for sunset, before descending by funicular (additional charges apply), or stroll the bohemian streets of Barrio Bellavista, famed for its colourful houses and street art.

**Overnight:** Pullman Santiago El Bosque, or similar, Santiago  
**Meals included:** Breakfast

##### Day 19 Santiago, Chile - Australia (or New Zealand)

At the appropriate time, be transferred to the airport for your return flight to Australia (or New Zealand).

*Please note: Some customers may depart early in the morning on Day 20. In these circumstances, customers are still required to be at the airport in the evening of Day 19.*

**Meals included:** Breakfast; In-Flight

##### Day 20 In Transit

Sit back, relax as you reminisce on the memories created over the past weeks on your trip through South America.

**Meals included:** None

##### Day 21 Arrive Australia (or New Zealand)

Upon arrival in Australia (or New Zealand) please make your own onward travel arrangements.

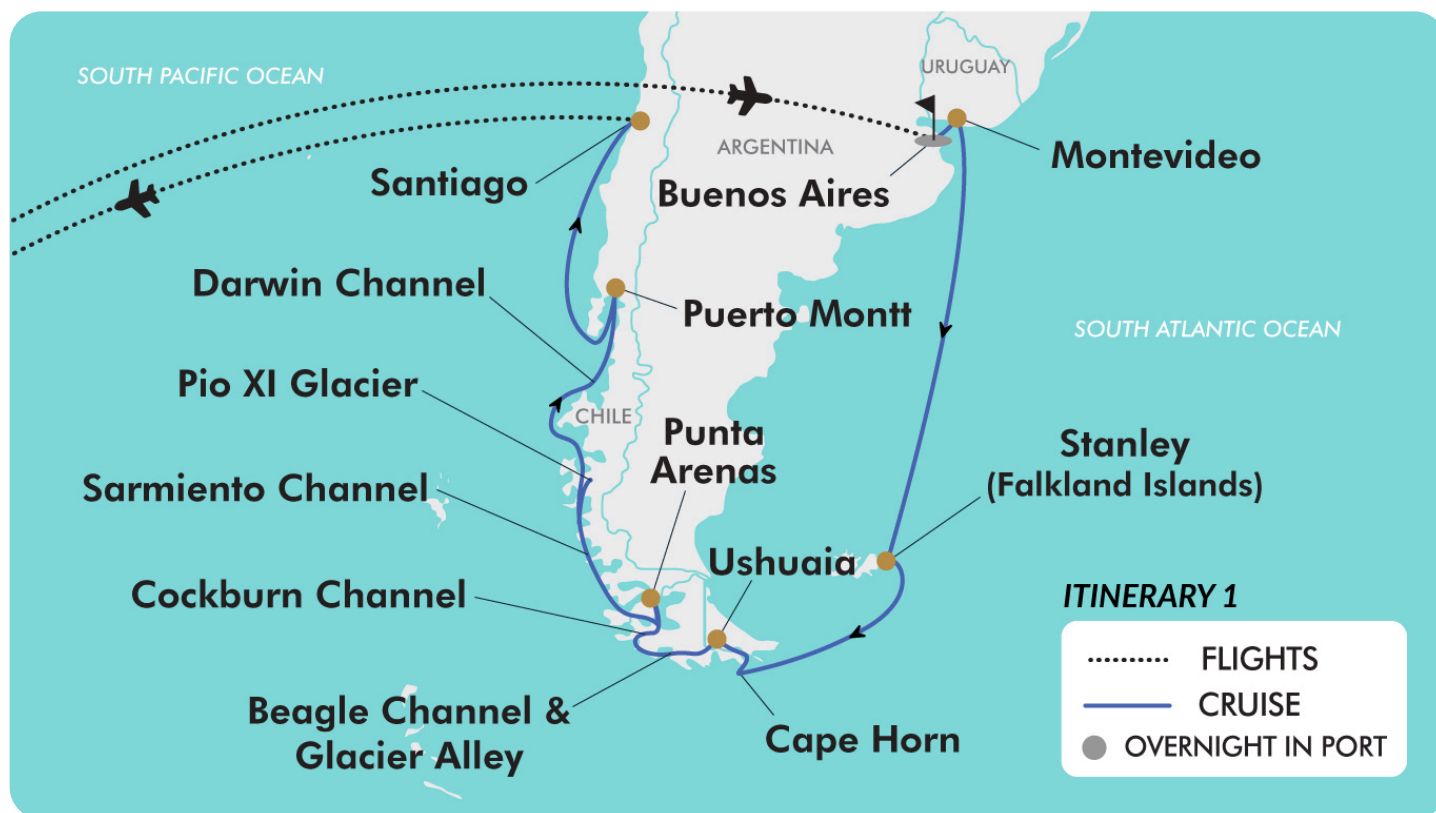




## 21-DAY CRUISE & TOUR PACKAGE | CRUISE PATAGONIA & CAPE HORN

### The Map

#### Itinerary 1 - Buenos Aires to Santiago



Offer available for a limited time or until sold out. TRIP A DEAL PTY LTD: 50149240433

Updated: 02 Jan 2026 14:35:37

Have a question about this deal? We're here to help.  
Call our friendly team on 1300 158 912





## 21-DAY CRUISE & TOUR PACKAGE | CRUISE PATAGONIA & CAPE HORN

### The Itinerary

#### Itinerary 2 - Santiago to Buenos Aires

##### Day 1 Australia (or New Zealand) - Santiago, Chile

Today depart from Australia (or New Zealand) to Santiago, Chile. Upon arrival, be welcomed and transferred to the hotel where you can enjoy the remainder of the day at leisure.

*Please note: Due to flight scheduling and availability, some departures may occur on Day 0. Affected customers must be available to depart the day before. Flight times will be indicated on your final documents, issued 4-6 weeks before departure.*

**Overnight:** Pullman Santiago El Bosque, or similar, Santiago

**Meals included:** In-Flight

##### Day 2 Santiago, Chile - Day at Leisure

Enjoy the day at leisure to independently explore Santiago's charm. We recommend heading to the Oasis Station to take the cable car atop Cerro San Cristobal in time for sunset, before descending by funicular (additional charges apply), or stroll the bohemian streets of Barrio Bellavista, famed for its colourful houses and street art.

**Overnight:** Pullman Santiago El Bosque, or similar, Santiago

**Meals included:** Breakfast

##### Day 3 Santiago, Chile - San Antonio, Chile - Embark Holland America's Oosterdam

**Departs:** 17:00

Enjoy the morning at leisure before being transferred to San Antonio at the appropriate time to board Holland America's Oosterdam.

Holland America Oosterdam:

The Oosterdam, the second in Holland America's distinguished Vista Class, blends high style with inviting comfort. You'll find thoughtful upgrades and captivating artwork throughout the ship. Beyond the expansive ocean views and spacious staterooms, there's a wealth of activities to enjoy onboard. Every stateroom ensures your comfort with daily housekeeping, complimentary 24-hour room service, premium Elemis bath products, luxurious bathrobes, ample storage, fresh fruit upon request, a TV with on demand movies and programming, and more.

**Overnight:** Holland America's Oosterdam

**Meals included:** Breakfast; Dinner

##### Day 4 Cruising

Enjoy a sea day to explore the onboard activities and amenities. Why not catch a show at the World Stage or Rolling Stone Lounge, or try your hand at pickleball before enjoying a sundowner at one of the onboard bars (charges apply).

**Overnight:** Holland America's Oosterdam

**Meals included:** Breakfast; Lunch; Dinner

##### Day 5 Puerto Montt, Chile

**Tendered:**

**Arrives:** 08:00 - **Departs:** 17:00

Puerto Montt, the capital of the Los Lagos region of Chile, is often called the gateway to the country's glacial lakes, volcanic landscapes and surrounding national parks. The port is also home to an over-100-year-old German settlement as well as to

Offer available for a limited time or until sold out. TRIP A DEAL PTY LTD: 50149240433

Updated: 02 Jan 2026 14:35:37

Have a question about this deal? We're here to help.  
Call our friendly team on 1300 158 912







## 21-DAY CRUISE & TOUR PACKAGE | CRUISE PATAGONIA & CAPE HORN

### The Itinerary

#### Itinerary 2 - Santiago to Buenos Aires

indigenous communities of Mapuche people. While in Puerto Montt, take a fascinating look into Chile's diverse cultures and get a taste for the country's stunning scenery.

Puerto Montt is a fascinating introduction to southern Chile and the people who make their home in one of the world's most photogenic landscapes. From a stroll around nearby Puerto Varas overlooking Lake Llanquihue, one of Chile's largest lakes, to a meal in the local fishing village of Angelmó washed down with a traditional German-style white wine, Puerto Montt has much to offer during your leisure time (charges may apply).

*Please note: This port is accessed by tender boats - wheelchair access limited. Boarding and disembarking tender boats may involve steps and uneven surfaces. While cruise lines strive to provide ease of access, accessibility options can vary at different tender ports. Passengers with mobility concerns are encouraged to inquire about specific arrangements and consider their individual needs when participating in tendering activities.*

**Overnight:** Holland America's Oosterdam

**Meals included:** Breakfast; Lunch; Dinner

#### Day 6 Puerto Chacabuco, Chile

**Tendered:**

**Arrives:** 11:00 - **Departs:** 20:00

The tiny town of Puerto Chacabuco, with just over 1,000 residents, sits at the head of the Aisén Fjord. This modest port is the gateway to some of the most beautiful sights in this part of Chilean Patagonia.

The nearby provincial capital, Coihaique, or Puerto Aisén, a city that straddles the Aisén River, is less than 20 minutes by car from Puerto Chacabuco. In both you can find options to shop for handicrafts and excellent local restaurants.

To experience the natural beauty of the region, head to the Río Simpson National Reserve for stunning vistas, pristine waterfalls and crystal-clear canyon rivers, which are especially famous for their fantastic fly fishing and their enormous brown and rainbow trout. It doesn't take long to get from Puerto Chacabuco to these nearby sights, so put on your walking shoes and go witness some of the wonders of this part of Chile.

*Please note:*

- *Charges may apply to the above activities.*
- *This port is accessed by tender boats - wheelchair access limited. Boarding and disembarking tender boats may involve steps and uneven surfaces. While cruise lines strive to provide ease of access, accessibility options can vary at different tender ports. Passengers with mobility concerns are encouraged to inquire about specific arrangements and consider their individual needs when participating in tendering activities.*

**Overnight:** Holland America's Oosterdam

**Meals included:** Breakfast; Lunch; Dinner







## 21-DAY CRUISE & TOUR PACKAGE | CRUISE PATAGONIA & CAPE HORN

### The Itinerary

#### Itinerary 2 - Santiago to Buenos Aires

##### Day 7 Cruising Chilean Fjords

The west coast of Chile is sliced by dramatic inlets, or fjords, lined with rugged mountains and glacier-covered valleys. This spectacular stretch of coastline starts near the Reloncaví Estuary (roughly halfway down the long spine of Chile) and extends south to the very end of the continent, at Tierra del Fuego. It's a distance of some 1,500 kilometres, as the crow flies. Travel here, however, is never in a straight line, instead ships follow meandering paths along the many fjords and channels.

The area is known for its rugged beauty and not surprisingly it's home to many of Chile's national parks, including Alerce Andino, Hornopirén and Vicente Pérez Rosales, as well as the Llanquihue National Reserve and the Cochamó Valley. Early Spanish explorers came here in search of the mythical City of the Caesars, whose people were believed to be rich in gold and diamonds. Though the city was never found, the explorers added much to the world's navigational knowledge and at the same time established shipping routes that have been used ever since. Today, the wonders of natural riches in this region offer stunning scenery of this windswept, dramatic land and its unusual animal residents.

*Please note: The Chilean Fjords is a cruising destination. Your ship will not dock on this day of the itinerary.*

**Overnight:** Holland America's Oosterdam

**Meals included:** Breakfast; Lunch; Dinner

##### Day 8 Pio XI Glacier (Bruggen Glacier) & Sarmiento Channel (Scenic Cruising)

Today you'll enjoy a short cruise of Pio XI Glacier before cruising the Sarmiento Channel.

##### Pio XI Glacier (Bruggen Glacier - Cruising Only):

Pio XI Glacier, also known as Bruggen Glacier, is one of the world's few advancing glaciers, located in Chile's Southern Patagonian Ice Field.

##### Sarmiento Channel (Scenic Cruising):

One of the main channels in Patagonia, the Sarmiento Channel runs in a north-south direction, starting at the Guía Narrows and finishing at the southern edge of Victoria Pass, where it joins the Smyth Channel. The Kawesqar people have inhabited this region for more than 6,000 years, but the channel was named for a more recent arrival, the Spanish explorer Pedro Sarmiento de Gamboa, who first navigated it between 1579 and 1580. The Chilean mainland lies to the east, and the islands of Esperanza, Vancouver and Piazzzi flank the channel to the west.

As elsewhere in the Chilean fjord region, the ragged coastline is cut with inlets set among snow-covered mountain ranges. In many places, massive glaciers run down to the sea. All kinds of marine animals, including Magellanic penguins, southern elephant seals, dolphins and orcas, can be seen along these shores.

*Please note:*

- Pio XI Glacier & Sarmiento Channel are cruising destinations. Your ship will not dock on this day of the itinerary.





## 21-DAY CRUISE & TOUR PACKAGE | CRUISE PATAGONIA & CAPE HORN

### The Itinerary

#### Itinerary 2 - Santiago to Buenos Aires

Overnight: Holland America's Oosterdam

Meals included: Breakfast; Lunch; Dinner

##### Day 9 Strait of Magellan (Cruising Only)

Before the Panama Canal, there was the Strait of Magellan. This cinematic channel linking the Atlantic and Pacific oceans cuts between the mainland tip of South America and Tierra del Fuego island. It was the passage of choice for seafaring transport between these two oceans until the Panama Canal shortened the distance by thousands of miles in 1914.

The first European to traverse its waters, all 560 kilometres in length and up to 32 kilometres in width of them, was Portuguese sailor Ferdinand Magellan, who did so in 1520 in the name of Spanish exploration. Magellan surely sailed mouth agape at the impressive glacial and mountainous scenery, the undiscovered colonies of Magellanic penguins, pods of humpback whales and schools of Commerson's and Peale's dolphins. With photogenic Punta Arenas as its main port, the Strait of Magellan is a bucket-list voyage for intrepid adventurers the world over.

*Please note: The Strait of Magellan is a cruising destination. Your ship will not dock on this day of the itinerary.*

Overnight: Holland America's Oosterdam

Meals included: Breakfast; Lunch; Dinner

##### Day 10 Punta Arenas, Chile - Cockburn Channel & Beagle Channel (Scenic Cruising)

Docked: Punta Arenas, Chile

Arrives: 6:00 - Departs: 18:00

Punta Arenas' windblown city near Chile's southernmost tip sits on the Strait of Magellan, which itself is positioned squarely between the Atlantic and Pacific oceans, exudes an "edge of the world" air. The city plays an important role in geographic, political and economic affairs in South America's so-called Southern Cone, formed by Chile and neighbouring Argentina. Punta Arenas, is gateway to the stunningly beautiful landscapes of Torres del Paine National Park and other attractions in Patagonia. Take the opportunity while in Punta Arenas to go penguin spotting on Isla Magdalena, kayak the Strait of Magellan, visit nearby farms or indulging in surf-and-turf specialties (here meaning fresh seafood and asado, or Chilean barbecue) at local restaurants (charges may apply).

##### Cockburn Channel (Cruising Only):

As you near the southern tip of South America, traveling along the Chilean or Pacific coast, you'll know that you're approaching the Cockburn (pronounced "CO-burn") Channel when you see the twin rocks that guard its entrance. The channel flows between the Brecknock Peninsula (the westernmost edge of Isla Grande de Tierra del Fuego) and a number of islands, including Clarence Island with its irregular coastline of dramatic sounds that reach deep into its interior. The channel is part of the route that connects the Strait of Magellan to the Beagle Channel, while along both sides of the waterway is one of the crown jewels of Chile's network of parks, Alberto de Agostini National Park.

The Cockburn Channel shares the same entrance to the Pacific as the Bárbara Channel. Because of its proximity to the open sea, you may experience some ocean swells as your ship navigates its





## 21-DAY CRUISE & TOUR PACKAGE | CRUISE PATAGONIA & CAPE HORN

### The Itinerary

#### Itinerary 2 - Santiago to Buenos Aires

length. The coastline here is rich in fjords and glaciers. The Pia Fjord is especially beautiful, as dozens of waterfalls cascade down the slopes into its waters. If you watch long enough, you may see huge chunks of ice calve off Pia Glacier and fall into the sea.

##### Beagle Channel (Cruising Only):

Running through the Tierra del Fuego archipelago, the Beagle Channel is a calm, scenic strait that has become a hugely popular cruise destination. Named in 1830 after a charting voyage by the HMS Beagle, the ship that later became famous for carrying English evolutionary biologist Charles Darwin on his five-year journey of discovery, the channel is one of a trio of navigable passages around the tip of South America. Some 240 kilometres long, the channel extends from Nueva Island in the east to Darwin Sound and Cook Bay in the west. Its western end lies within Chile, and its eastern end forms a segment of the border between Chile and Argentina. By far the largest sight along the channel is the town of Ushuaia in Argentina.

*Please note: Cockburn Channel and Beagle Channel are cruising destinations. Once you depart Punta Arenas, your ship will not dock again on this day of the itinerary.*

**Overnight: Holland America's Oosterdam**  
**Meals included: Breakfast; Lunch; Dinner**

#### Day 11 Glacier Alley (Scenic Daylight Cruising) - Ushuaia, Argentina

##### Glacier Alley (Cruising Only):

Glacier Alley, or as it's more elegantly known, Avenue of the Glaciers, stretches along a good portion of the celebrated 240-kilometre-long Beagle Channel in the vast territory of Tierra del Fuego. As you travel into the Beagle Channel, the vital waterway follows the route that the famous HMS Beagle took with a young and then-unknown geologist and wildlife expert on board, Charles Darwin. You'll be captivated by one stunning glacier after another, each flowing down from massive mountain ranges and peaks such as the snowcapped one named for Darwin himself. Listen for the cracking sound of the blue ice as it tumbles into the channel or the rush of ice-melt waterfalls. Along with all these natural wonders, a visit to Glacier Alley comes with opportunities to see penguin rookeries, humpback whales and seals.

##### Docked: Ushuaia, Argentina

**Arrive: 12:00 - Depart: 20:00**

Dramatic, fantastical, otherworldly, this is the end of the world. Positioned at the southernmost tip of Argentina, this memorable port town is cradled between the pristine, towering Martial Mountains and accessed by the picturesque Beagle Channel (which was named for Darwin's famed vessel). Ushuaia is the capital of the Tierra del Fuego region, which is best described as a spectacular collection of superlative natural wonders. It's a





## 21-DAY CRUISE & TOUR PACKAGE | CRUISE PATAGONIA & CAPE HORN

### The Itinerary

#### Itinerary 2 - Santiago to Buenos Aires

veritable kaleidoscope of glittering glaciers, snowcapped mountains, dense forests, sparkling lakes and windswept plains spread across an archipelago of rugged islands.

The town itself is a maze of streets lined with low-slung buildings that all seem to meet at its heart, the port. Founded in 1884, the far-flung spot welcomed missionaries, gold prospectors and naval officers before becoming known primarily as a penal colony. After its closure under the infamous Argentine leader Juan Perón, the large jail was reconfigured to house one of the city's most popular museums (entry fees apply). Other current in-town attractions include a maritime museum and a museum dedicated to the region's natural history, as well as restaurants preparing local king crab (charges may apply).

*Please note: Glacier Alley is a cruising destination. Your ship will dock today in Ushuaia, Argentina.*

**Overnight: Holland America's Oosterdam**

**Meals included: Breakfast; Lunch; Dinner**

#### Day 12 Cape Horn (Scenic Cruising)

For centuries this notorious ocean passage evoked dread in the hearts of sailors. Cape Horn is shaped by capricious weather, powerful winds and shallow waters, and is where the Atlantic and Pacific Oceans slosh violently into each other and Tierra del Fuego, or "land of fire," is where Chile and Argentina converge at the bottom of the world. Tierra del Fuego got its name from early sailors who saw the fires of the people who lived here burning on shore. For some 8,000 years, until as recently as the end of the 19th century, this was the home of the Yaghan and other indigenous groups.

Explorers Magellan and Drake left their mark and names here, as did Darwin, who sailed through on his great adventure on the HMS Beagle. Until the Panama Canal was built, Cape Horn was the only way for the great clipper ships to carry goods and gold between California and the East Coast.

*Please note: Cape Horn is a scenic cruising destination. Your ship will not dock on this day of the itinerary.*

**Overnight: Holland America's Oosterdam**

**Meals included: Breakfast; Lunch; Dinner**

#### Day 13 Stanley, Falkland Islands (Islas Malvinas)

**Tendered:**

**Arrives: 8:00 - Departs: 18:00**

(times subject to weather conditions)

The world's southernmost capital, Stanley is located in the Falklands archipelago, consisting of two main islands, East and West Falkland, along with smaller islands nearby. Stanley is proud of its British heritage, evidenced everywhere from its red telephone boxes to its pubs. The Falklands were used as a base for ships hunting sperm whales for oil, followed by those hunting seals for fur in the early days of colonisation. Today in this remote British territory, fishing and tourism drives the economy.

*Please note: This port is accessed by tender boats - wheelchair access limited. Boarding and disembarking tender boats may involve steps and uneven surfaces. While cruise lines strive to provide ease of access, accessibility options can vary at different tender ports.*

Offer available for a limited time or until sold out. TRIP A DEAL PTY LTD: 50149240433

Updated: 02 Jan 2026 14:35:37

Have a question about this deal? We're here to help.  
Call our friendly team on 1300 158 912







## 21-DAY CRUISE & TOUR PACKAGE | CRUISE PATAGONIA & CAPE HORN

### The Itinerary

#### Itinerary 2 - Santiago to Buenos Aires

*Passengers with mobility concerns are encouraged to inquire about specific arrangements and consider their individual needs when participating in tendering activities.*

**Overnight:** Holland America's Oosterdam

**Meals included:** Breakfast; Lunch; Dinner

##### Day 14 Cruising

**Overnight:** Holland America's Oosterdam

**Meals included:** Breakfast; Lunch; Dinner

##### Day 15 Cruising

**Overnight:** Holland America's Oosterdam

**Meals included:** Breakfast; Lunch; Dinner

##### Day 16 Montevideo, Uruguay

**Docked:**

**Arrives:** 8:00 - **Departs:** 18:00

Uruguay's capital, Montevideo, may not have the hustle and bustle of Argentina's capital Buenos Aires, yet it shares that city's cosmopolitan atmosphere and excellent steak houses. There is a relaxed feel to this more low-key counterpart with a surprising mix of neighbourhoods. The Ciudad Vieja, with its grid of streets on a peninsula separating the Río de la Plata from the harbour, is the colonial heart. It has recently undergone a renaissance with restaurants, bars and clubs opening in historic buildings that have been meticulously restored. Montevideo's downtown offers a

treasure trove of Art Deco buildings, while the newer eastern suburbs may evoke Miami, USA. Gleaming skyscrapers and open-air cafés overlook beaches that run for miles.

*Please note: Port arrival and departure times are subject to transit windows.*

**Overnight:** Holland America's Oosterdam

**Meals included:** Breakfast; Lunch; Dinner

##### Day 17 Buenos Aires, Argentina (Overnight)

**Arrives:** 8:00 - **Overnight**

In the early 20th century, Buenos Aires, Argentina, gained immense wealth when it began shipping its pampas-raised beef around the world. It quickly entered the club of great world cities, and a slew of attractions and architectural jewels soon arose. Since that time, Buenos Aires continues to fascinate and entertain visitors, both for its chaotic energy and for its sheer urban beauty. The Belle Époque grandeur and enormous tracts of greenery continue to be a drawcard. Any list of things to do in Buenos Aires would begin with its many walkable neighbourhoods - Palermo especially stands out, thanks to creative residents who have pushed the restaurant scene well beyond beef. Porteños, as the locals are called, may be of Spanish, Italian, Jewish or Middle Eastern descent, a mix of cultures is reflected in the city's dialect, foods and pastimes.







## 21-DAY CRUISE & TOUR PACKAGE | CRUISE PATAGONIA & CAPE HORN

### The Itinerary

#### Itinerary 2 - Santiago to Buenos Aires

Looking beyond the city's sights, Buenos Aires is known as the birthplace of tango, and fans come here from around the world to take part in or watch the milongas (dance events). Argentines are world leaders in polo, and as the sport gains global celebrity, it draws the interest of more and more travellers.

**Overnight:** Holland America's Oosterdam  
**Meals included:** Breakfast; Lunch; Dinner

#### Day 18 Disembark Buenos Aires, Argentina Disembark

Today you will disembark the ship and be transferred to the hotel where you will spend the rest of the day at leisure.

**Overnight:** Hotel Grand Brizo, or similar, Buenos Aires  
**Meals included:** Breakfast

#### Day 19 Buenos Aires, Argentina - Australia (or New Zealand)

At the appropriate time be transferred to the airport for your return flight to Australia (or New Zealand).

*Please note: Some customers may arrive +1 day on Day 20.*

**Meals included:** Breakfast; In-Flight

#### Day 20 In Transit

Sit back, relax as you reminisce on the memories created over the past weeks on your trip through South America.

**Meals included:** None

#### Day 21 Arrive Australia (or New Zealand)

Upon arrival in Australia (or New Zealand) please make your own onward travel arrangements.

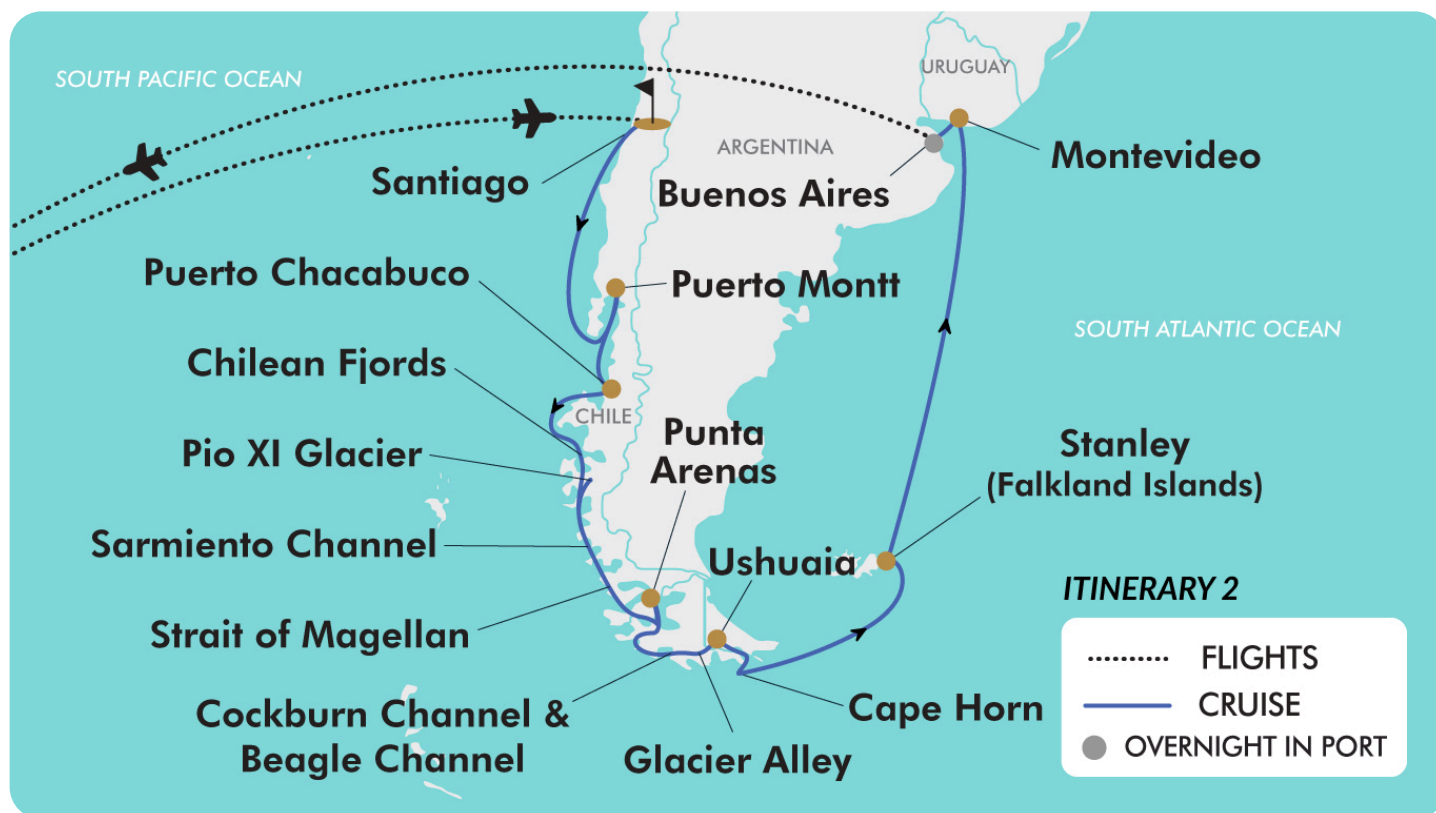




## 21-DAY CRUISE & TOUR PACKAGE | CRUISE PATAGONIA & CAPE HORN

### The Map

#### Itinerary 2 - Santiago to Buenos Aires



Offer available for a limited time or until sold out. TRIP A DEAL PTY LTD: 50149240433

Updated: 02 Jan 2026 14:35:37

Have a question about this deal? We're here to help.  
Call our friendly team on 1300 158 912





21-DAY CRUISE & TOUR PACKAGE | CRUISE PATAGONIA & CAPE HORN

Tour Inclusions

HIGHLIGHTS

- Explore the dramatic scenery of southernmost cities on a 15-night Holland America cruise
- Enjoy time at leisure to explore Argentina's European-influenced capital, Buenos Aires
- Discover Santiago, Chile's vibrant capital city cradled by the Andes Range
- Dock in Montevideo, Uruguay, where you can stroll the picturesque waterfront promenade 'La Rambla'
- Delve into maritime history & look out for wildlife in Stanley on the Falkland Islands
- Marvel at the rugged beauty of the Tierra del Fuego archipelago when cruising Cape Horn
- Be captivated by wildlife, searching for whales, penguins, dolphins & many rare bird species
- Admire sparkling blue glaciers, soaring mountains & vast ice fields
- Dock in Ushuaia, Argentina's southernmost city, often proclaimed as the "End of the World"
- Witness dramatic vistas as you cruise through stunning Glacier Alley
- Watch out for ice calving to see colossal ice chunks crashing into the channel
- Cruise through the Sarmiento Channel, lined with glaciers, fjords & an abundance of wildlife

FLIGHTS

Return international full-service flights (economy class), surcharges may apply

CRUISE

- 15-night cruise aboard Holland America's Oosterdam
- Discover Explorations Central to enrich your journey with destination programming, expert insights & local engagement opportunities (charges may apply)

ACCOMMODATION

- 1-night of 4-star hotel accommodation in Buenos Aires
- 2 nights of 4-star hotel accommodation in Santiago

DINING

Enjoy 47 meals, including all while cruising

ESSENTIALS

- Airline taxes & surcharges
- Cruise port taxes & surcharges

TRANSPORT

Transportation by private air-conditioned vehicles

TRANSFERS

All airport & cruise port transfers included



# Important Information

*\*Please note: All information provided in this brochure is subject to both change and availability. Prior to purchase please check the current deal for up-to-date information. If you have already purchased this deal, the terms and conditions on your Purchase Confirmation apply and take precedence over the information in this brochure.*

## Booking Information

After purchase, you will receive a receipt and a Purchase Confirmation, directing you to an online Passenger Information Form. You must complete the Passenger Information Form within 72 hours of purchase.

Any special requests, preferences and optional extras MUST be clearly stated in your Passenger Information Form. Any change requested after submitting your Passenger Information Form cannot be guaranteed, is strictly subject to availability and will incur surcharges as outlined in the Schedule of Fees below.

*Please note: All countries and territories have different entry requirements in relation to vaccinations, quarantine/isolation periods and travel restrictions. Due to the evolving nature, we would ask all of our customers to monitor, meet and adhere to the specific requirements of their intended destination(s) in the lead-up to and immediately before travel, as well as any requirements post-travel upon their return.*

## Our Policies

### Cancellation and Refund Policy

By placing a booking with us, you acknowledge the following important information:

- **we act as your booking agent;** TripADeal is a booking services provider, and curates the Travel Offers available on our website. We act as your booking agent, and we receive payment for the Booking Services as part of the booking price, however, we do not provide any of the Travel Services (flights, accommodation, tours or other products or services) included in your booking – the Travel Services are provided by a number of third party Travel Suppliers.

- **each booking is unique;** our Travel Offers are made up of a variety of different components and are, during the booking process, uniquely tailored to suit your requirements, for example, departure dates and ports, flight and room upgrades, tour inclusions, etc.

- **changes/modifications to your booking may not be possible;** once your booking has been made, changes or modifications may not be possible, and where possible, may incur a fee. It is important to ensure that the information you provide during the booking process is accurate and up to date, and that you read the Travel Offer carefully before placing your order.

- **Travel Offers are a package;** our Travel Offers have been curated into package offerings and must be used as a package – individual components cannot be used independently of the full package offering.

- **our Travel Offers are generally non-refundable;** in order to provide great value Travel Offers, we work with a variety of Travel Suppliers to find the best deals – this often means the Travel Suppliers' offerings are non-refundable to ensure the best price. We recommend that you obtain travel insurance as soon as you make a booking with us.

To read more about our Cancellation and Refund Policy, please [click here](#).

### General Terms and Conditions

By placing your booking with us, you acknowledge and agree to our [Terms & Conditions](#), [Privacy Policy](#) and [Cancellation Policy](#).

## Offer Essentials

This Travel Offer is valid for travel on selected dates until the 8th March 2027. Minimum group size 5, maximum group size 40 per vehicle.

This Travel Offer is priced per person based on a twin share.

### Departure Dates & Surcharges

See checkout for live dates and availability.

## Single Traveller Supplement

For solo travellers, a mandatory single supplement applies:

### Itinerary 1:

Inside Stateroom: \$3,500  
Ocean View Stateroom: \$4,300  
Verandah Stateroom: \$5,100

### Itinerary 2:

Inside Stateroom: \$3,250  
Ocean View Stateroom: \$3,950  
Verandah Stateroom: \$4,700

*Please note: Accommodation for single customers who are travelling on a tour or cruise package may be in a single room, depending on availability.*

## Child Policy

- No child discounts are offered. The full price applies to all children travelling with their parents.
- Valid for children 12 years old and over.

*Please note: Children must be accompanied by a responsible adult 18 years old and over to travel. No unaccompanied minors are allowed.*

## Flights

### Departure Cities

Sydney, Melbourne, \*Brisbane, \*Adelaide, \*Perth and Auckland

### Departure City Surcharges

Brisbane: \$150 per person  
Adelaide: \$150 per person  
Perth: \$450 per person

### International Flight(s)

- Full-Service Airline(s)
- Cabin Class: Economy Class

*Please note: We cannot accommodate one-way flights. Travellers must take all included flights within the package, and any flights intentionally forfeited will result in later flights being subject to cancellation.*

*Please note: From Australia or New Zealand, the flying journey to your destination may take up to 35 hours, with up to 2 stops. This is provided as a guide only - actual flight*



# Important Information

*duration can vary depending on availability and airline schedules. Your booking's final details will be confirmed to you via email once available.*

## Preferred Airline Surcharge

Not available.

## Arrive Early and Stay Behind Options

Fly out and return home up to 60 days pre and post your tour dates.

### Arrive Early

Buenos Aires, Argentina (Itinerary 1 Only) - From \$300 per person, subject to availability.  
Santiago, Chile (Itinerary 2 Only) - From \$300 per person, subject to availability.

### Stay Behind

Santiago, Chile (Itinerary 1 Only) - From \$300 per person, subject to availability.  
Buenos Aires, Argentina (Itinerary 2 Only) - From \$300 per person, subject to availability.

*Please note:*

### ● Exclusions:

*This fee does not include extra nights' accommodation, meals or airport transfers.*

### ● Cancellations & Changes:

*Flight booking changes or cancellations after air tickets have been issued are not guaranteed and may incur additional fees and fare difference, subject to the airline cancellation and change policies. Flight changes are subject to availability at the time of booking.*

### ● High-Season:

*A high-season Arrive Early or Stay Behind can be purchased for an additional charge, subject to availability. For pricing, please refer to the cart.*

### ● + 60 days:

*You can fly out up to 60 days before your package's start date, and/or return home 60 days after your package's end date. Should you wish to fly out or return home for more than 60 days from the tour, please contact us to request availability. Additional costs may apply.*

### ● Estimated dates:

*Your estimated departure, return, and arrival dates are all subject to availability and may vary. The confirmed schedule for all flights will be provided when you receive your flight tickets.*

- *High season surcharges apply to flights departing between the below date ranges:*
- *16th June 2025 - 20th July 2025*
- *15th September 2025 - 12th October 2025*
- *1st December 2025 - 19th December 2025*
- *20th December 2025 - 4th January 2026*
- *5th January 2026 - 31st January 2026*
- *3rd April 2026 - 20th April 2026*
- *26th June 2026 - 17th July 2026*
- *18th September 2026 - 9th October 2026*
- *12th December 2026 - 18th December 2026*
- *19th December 2026 - 3rd January 2027*
- *4th January 2027 - 26th January 2027*
- *19th March 2027 - 28th April 2027*
- *19th June 2027 - 18th July 2027*
- *11th September 2027 - 10th October 2027*
- *10th December 2027 - 19th December 2027*
- *20th December 2027 - 3rd January 2028*

## Stopover Packages

Not available.

## Flight Class Upgrades

Business Class: For pricing, please refer to the payment cart at checkout.

*Please note:*

- *Flight upgrades are subject to availability and pricing changes (if we cannot fulfil your request, the upgrade cost will be refunded).*

- *On any upgrade purchase, short-haul flights and domestic flight sectors are not guaranteed.*

## Outbound

### Flights

*Please note: Due to flight scheduling and availability, some departures may occur on Day 0. Affected customers must be available to depart the day before. Flight times will be indicated on your final documents, issued 4-6 weeks before departure.*

## Missed Flights

If you fail to arrive for your outbound flight, you risk all flight and land arrangements in your destination being automatically cancelled by the airlines and land operator, respectively. Additional fees may apply to reinstate these services. If you miss your flight for whatever reason, please contact us as soon as possible to make arrangements.

## Cruise

### Holland America's Oosterdam

Oosterdam, Holland America's second Vista Class ship, brings high style to the high seas with thoughtful upgrades and stunning artwork. You will have plenty to do on board when not taking in expansive views or stretching out in spacious staterooms. Begin with an exquisite breakfast in the Dining Room. Unwind with a massage at the Greenhouse Spa & Salon®, indulge in pre-dinner craft cocktails at Ocean Bar, followed by delectable Italian fare at Canaletto (charges may apply). Top off the night with chart-topping hits at Billboard Onboard.

## Onboard Currency

\$ USD

## Cabins/Staterooms

Interior Staterooms: 14m<sup>2</sup> to 21m<sup>2</sup>

Features: Two lower beds that can convert to one queen-size bed - Holland America's signature Mariners Dream bed with plush Euro-Top mattresses. The room also has



# Important Information

premium massage shower heads and a host of amenities are featured in these very comfortable staterooms.

## Ocean View Staterooms: 16m<sup>2</sup>

Features: Two lower beds that can convert to one queen-size bed - Holland America's signature Mariners Dream bed with plush Euro-Top mattresses. This room also has premium massage shower heads, a host of amenities and an ocean view.

## Verandah Staterooms: 19m<sup>2</sup> to 33m<sup>2</sup> including the verandah

Features: Filled with light from floor-to-ceiling windows overlooking a private verandah, these staterooms include a sitting area and two lower beds that are convertible to one queen-size bed - Holland America's signature Mariner's Dream bed with plush Euro-Top mattresses. There's also a bathtub with premium massage shower heads.

### *Please note:*

- *All cabins are subject to availability; some cabins may have restricted views.*
- *Cruise cabins are booked on a guaranteed basis and are assigned by the cruise line prior to departure.*

### **Cruise Arrival and Departure Times:**

Please keep in mind that the provided cruise arrival and departure times are an approximate and will be finalised upon receipt of your cruise tickets.

## **Accommodation**

### **Accommodation Used:**

#### 4-star Properties (Self-Rated)

Buenos Aires, Argentina: Hotel Grand Brizo or similar

Santiago, Chile: Pullman Santiago El Bosque or similar

*Please note: Accommodation/rooms offered are based on a lead-in room type and are subject to availability based on seasonality. In the instance a property is not available, a similar standard of accommodation will be provided. Properties will be confirmed and*

*included in your travel pack, which you will receive 4-6 weeks before travel.*

### **Extra Nights**

Not available.

*Please note: If you are interested in booking additional nights of accommodation pre or post-tour, please wait until you receive your travel documentation approximately 4-6 weeks before departure for the confirmed list of hotels. If booking your own additional accommodation directly with the hotel, please be aware that you may be required to change rooms at the start/end of your tour.*

### **Maximum Room Capacity**

2 people.

### **Triple Share**

Not available.

### **Bedding Configuration**

Twin or double (subject to availability).

### **Wildlife**

TripADeal cannot guarantee animal sightings. Wildlife are unpredictable and factors such as weather conditions, predatory fear and animal movements can impact sightings.

## **Optional Tours/activities**

### *Please note:*

- *Some tours or shore excursions require minimum numbers to operate.*
- *Shore excursions can be booked/reserved directly with the cruise line before travel (subject to availability)*
- *Shore excursions can also be booked whilst onboard (subject to availability).*

### **Wildlife**

TripADeal cannot guarantee animal sightings. Wildlife are unpredictable and factors such as weather conditions, predatory fear and animal movements can impact sightings.

- Shore excursion programmes and itineraries may vary depending on local conditions and/or any unforeseen events concerning the timing on the day of the tour. Some excursions are very popular, and therefore availability cannot always be guaranteed, it is advisable to book in advance to avoid disappointment.

## **Exclusions**

- Visa fees and requirements
- Domestic transfers and flights not stated in the deal offer
- Meals/beverages not stated in the deal offer
- Optional gratuities/tipping
- Optional activities/tours
- Personal expenses
- Travel insurance
- Any costs associated with an interruption to your tour as a result of an airline schedule change or cancellation
- Mandatory city tax

## **Gratuities / Tipping**

### **Land**

Gratuities (tips) are not included for the services of the tour leader (when available) and driver throughout the tour. The recommended tip is \$8 - \$10 USD per person per day. This covers the driver and will be collected on tour.

*Please note: Tipping for services provided is always a matter of personal discretion; however, please be aware that many locals consider tipping part of their normal remuneration, and they may approach you for payment; there's no need to be intimidated by the request.*

### **Cruise**

Gratuities (tips) are not included for the cruise staff's services throughout this tour's cruise component. Holland America is an internationally registered company & operates to US & European standards, both of which have an economy driven by a tipping culture. Gratuities are expected on your cruise and will be charged to your onboard account at \$17 USD per person per day. If you have any questions



# Important Information

regarding the gratuities on your cruise, please speak to the guest services staff onboard the ship.

## Other Important Information

### TOUR GUIDE VS. TOUR LEADER

#### Tour Guide:

Often locals with intimate knowledge of an area, its culture, and history. Their role entails providing commentary, routing the tour, and seeing that people have a good time. They are a licensed, qualified expert who supplies specific information on the history, art, architecture and culture of the city/village/attraction where they are guiding the tour. The guide meets the group at the required place and leaves it at the end of the tour; they do not travel with the group.

#### Tour Leader:

An experienced person tasked with ensuring the smooth operation of tours, as well as providing practical support to passengers throughout the whole trip. Their role primarily includes assisting with accommodation, transportation between locations, and communication with tour guides at each stop. A tour leader may provide general guidance around a city or village and offer information on the place visited on the bus. However, they are not required to have specific art, architecture, or historical knowledge. They are not allowed to provide a guided tour or commentary of a city/village/attraction once there and, if caught doing so, can be fined.

*Please note: Tour leaders/guides are not a standard inclusion in all travel offers. Tour leaders/guides will only be made available when required to enhance the experience of the destination featured.*

### CLIMATE & AVERAGE TEMPERATURES

#### Buenos Aires, Argentina

In December, average temperatures in Buenos Aires range from 18°C to 29°C with gentle breezes. In March, Buenos Aires transitions from summer to autumn

with pleasantly warm temperatures ranging from approximately 17°C to 26°C, moderate humidity, and decreasing daylight hours averaging about 12.3 hours.

#### Santiago, Chile

Santiago has a cool semi-arid climate, with Mediterranean patterns: warm dry summers (November to March) with temperatures reaching up to 35°C on the hottest days; winters (June to August) are cool and humid, with cool to cold mornings; typical daily maximum temperatures of 14°C, and low temperatures near 0°C. The precipitation average is 262 mm.

#### Weather

We always suggest referring to an online source for the most up-to-date weather information for your destination/s.

### FLIGHTS

#### Seat Selection & Frequent Flyer Points:

We do not arrange seat selection. It is essential to highlight that some airlines do not allow pre-selected seats. We strongly suggest you contact the airline directly with seating allocation requirements and/or arrive at the airport earlier to arrange your seating. While we do not add frequent flyer member details to bookings, you can do this directly with the airline once you have your flight information.

#### Dietary Requests

Meal options and availability differ between airlines and routes therefore not all dietary requests can be accommodated. If your flight includes meals we will select the most suitable option available based on the dietary requirements you have specified. All meal requests are subject to airline approval and are not guaranteed, therefore we recommend preparing for your flight by bringing appropriate food for yourself, as required.

#### Passport Validity:

Customers must provide valid passport details either at the time of purchase or no later than 90 days before the departure

date. Failure to do so may result in the cancellation of the booking. Customers will be responsible for any costs and fees incurred in this instance.

### CRUISE

#### Embarkation / Disembarkation:

- Begins approximately 2 hours after docking.
- Due to security reasons, all guests must be on board 2 hours before sailing.
- Itineraries are subject to change at any time without notice.
- Check your specific sailing for exact departure and arrival times. All times are local to the port.

*Please note: Strict Covid-19 terms may also apply regarding proof of insurance covering Covid-19 and/or vaccination. Please refer to the cruise lines' terms and conditions for further information before boarding.*

#### Cruise Loyalty Discounts:

*Please note: Travellers must contact the cruise line directly upon receiving their travel documents in order to request any membership benefits they may be entitled to.*

### COACH TOUR

#### Meals:

For meals not included, the tour leader (when available) will offer assistance with reservations, suggestions and directions to local restaurants. It is your responsibility to notify us of any dietary requests/requirements.

*Please note: We will do our best to meet your requests/requirements; however, we cannot guarantee that we will always be able to.*

#### Luggage:

You will be responsible for all your personal belongings whilst on tour. You must carry your own luggage from the vehicle to the hotel room and back to the vehicle. The driver will assist with the uploading and unloading of bags from the vehicle.

### OTHER



# Important Information

## Mobility:

If you require wheelchair access please contact our friendly sales and service team to inquire on your behalf.

## Fitness Level Required:

Adventure (and spontaneity) create some of the best travel memories. Bear in mind, your home schedules and timings might not be adhered to on tour - it's all part of the fun!

A relaxed level of fitness will be required. Expect a comfortable pace of touring with a focus on leisure time and gentle activity. This may include city tours, the ability to walk up and down small flights of stairs and gentle slopes. You will be responsible for your own luggage and have the ability to board all modes of transport without assistance. Please note: Some areas may be inaccessible to wheelchairs or mobility scooters, with personal walking sticks and other aids required should they be needed. Although some assistance may be available, every traveller should be self-reliant during all aspects of their travel.

*Please note: It is expected that every traveller must be self-reliant and able to undertake all aspects of their own travel. Please speak to your booking agent about your personal circumstances and any assistance requirements to ensure this tour is right for you.*

*Please note: If you have any concerns, please consult your healthcare provider prior to purchase/travel.*

## Yellow Fever:

A valid international certificate of vaccination against Yellow Fever is required in many countries. You may need to present this on arrival at the airport or border crossing. Some countries will refuse entry if you are unable to present your certificate. It's also common for your home country to request a Yellow Fever certificate upon arrival. You must check with your doctor well before leaving home about the Yellow Fever requirements for the countries you'll be visiting.

## Sightseeing:

*Please note: If entry to a site is affected by changes in operating hours or public holiday closures, your itinerary, where possible, may be adjusted, or a similar activity will be offered in its place (subject to availability).*

## Wildlife

TripADeal cannot guarantee animal sightings. Wildlife are unpredictable and factors such as weather conditions, predatory fear and animal movements can impact sightings.

## Shopping:

Shopping overseas can be a daunting and confusing experience, especially when there is a language barrier. Please be very cautious when foreign currencies and prices are involved. If paying by credit card, please pay close attention to the amount you are being charged and keep all your receipts.

Do not make any purchases you are not comfortable with or feel pressured into. If you are uncertain or need assistance with the language barrier, please seek assistance from your Tour Guide/Leader. Please refer to our [Terms and Conditions](#) regarding shopping for further information.

## Visas

### Argentina

As a tourist, Australian passport holders can stay for up to 90 days without a visa, but will require:

- A return or onward ticket.
- A valid passport.
- Travel/medical insurance.

Please Note: Effective immediately, all international travellers to Argentina must hold valid travel insurance with medical coverage. This insurance may be requested and verified upon arrival in the country. Argentina's public healthcare system will no longer provide free medical services to foreign nationals. It is therefore essential that you obtain appropriate insurance before your departure.

### Chile

As of 17th September 2025 tourist visas for Chile are not required if travelling on an Australian Passport. You can stay in Chile for up to 90 days without a visa. If you're unsure whether you need a visa, contact the nearest [embassy or consulate of Chile](#).

## Uruguay

Australian passport holders can enter Uruguay without a visa for up to 90 days when travelling on a regular passport. There may be additional requirements if you travel on a different type of passport. Contact the nearest embassy or consulate of Uruguay for details. Entry and exit conditions can change at short notice. Contact the nearest embassy or consulate of Uruguay for details about visas, currency, customs and other travel requirements.

## New Zealand (Transiting)

If you do not hold an Australian passport you may be required to obtain a transit visa. Some flight routes make a stop in New Zealand and you may be required to obtain a transit visa to board your flight. It is the passengers' sole responsibility to seek advice on the correct visa and take appropriate action to ensure they have the correct visa prior to departure. Failure to do so may result in denied boarding and or refusal of entry to the country by the local authorities and immigration department. We strongly advise you to carefully review your flight tickets and then contact your respective consulate or a visa agency to confirm the necessary visa regulations and acceptable forms of personal identification for your transit.

## Important:

- *Please start arranging your visa three weeks before departure to account for any delays due to consulate operating hours.*
- *Visa rules are subject to change. Please check with the nearest embassy, consulate or immigration department of the destination/s you are visiting once you receive your travel documentation to ensure you have the most up to date information.*



# Important Information

- *It is your responsibility to be travel-ready and ensure that you are aware and comply with any destination or travel requirements, including the validity of all required travel documents.*
- *Passengers who are not Australian citizens must also check with the respective consulate or visa agency to determine what their visa requirements are and what personal identification is required.*
- *It is also important to note that some areas of employment, such as journalism, government authorities and charity organisations, may have additional restrictions in applying for visas. This may, in turn, affect the type of application required.*

## Travel Insurance

Embarking on your next trip is exciting, and while you hope the unexpected does not happen, it is best to be prepared. We strongly recommend you take out travel insurance when making your booking. Whether it's a potential medical emergency, a flight cancellation, a delayed suitcase, or an unforeseen event, it's important to ensure you're adequately protected. For more information or advice visit <https://www.tripadeal.com.au/travel-insurance>

## Schedule Of Fees

### Voluntary Changes

This includes booking changes requested by you, including but not limited to those changes requiring an airline ticket or a Purchase Confirmation reissue.

- Changes - \$100 per booking and any additional charges applied by the airline/ cruise company/accommodation/other travel providers.

### Name Changes Due To Passenger Error

- If the incorrect name has been provided, charges of \$100 per booking and any additional charges applied by the airline/ cruise company/accommodation/other travel providers.

### Supplier Fees

In the event the tour package you have purchased is unable to proceed, and/or a Travel Supplier is unable to fulfil the tour due to external circumstances (Limitation of Liability e.g. a Force Majeure event), there may be a fee or amount of money that is withheld by our Suppliers and is unrecoverable. This may be due to non-refundable airline tickets, cancellation penalties with cruise cabins or unrecoverable payments with our land/ accommodation partners. If refunds are not available from Suppliers, we will endeavour to obtain a travel credit on the best terms available and communicate these outcomes to you. In the event we are unable to obtain a refund or travel service credit, or part thereof, this cost is passed on to the customer as a Supplier Fee.