



Last Minute Luxury Antarctica

ARGENTINA • ANTARCTICA

The Offer

Prepare for an awe-inspiring adventure as you glide through Antarctica's wild and untamed seascapes. Begin in Buenos Aires, Argentina, take a charter flight to Ushuaia to board Swan Hellenic's 5-star SH Minerva. Set sail to one of the world's most thrilling destinations, discovering the Antarctic Peninsula's remote islands, research stations, penguin colonies, glaciers and more.

Touch down in Buenos Aires, the vibrant Argentine capital, before being whisked away to Ushuaia by charter flight. Here in one of the world's southernmost cities, Swan Hellenic's boutique luxury ship, SH Minerva, is ready to board. Prepare for thrilling Zodiac excursions backed by informative lectures and scientific insights from the experienced crew. Enjoy the company of like-minded polar explorers, savour world-class menus at onboard restaurants, enjoy panoramic views from the Observation Lounge - you could even brave a quick dip in the pool followed by a soothing hot sauna!

Cross the Drake Passage to Mikkelsen Harbour's sheltered bay, known for its historical significance and natural beauty. Look out for playful Gentoo and Chinstrap penguins as they dive from towering icebergs before continuing to Curtiss

Bay and the snow-covered peaks of Neko Harbour. Each destination offers the opportunity for another Zodiac adventure, depending on conditions, that get you up close to all of the action. Explore remote historic sites, environmental research stations and perhaps send a postcard home from the iconic "Penguin Post Office" at Port Lockroy. See Deception Island's steaming volcanic beaches and Half Moon Island in the South Shetland Islands before returning to Ushuaia. Disembark to catch a charter flight to Buenos Aires with days to soak up the tango spirit of this colourful city.

Itinerary 1 includes return international full-service flights, a return charter flight, 9-night 5-star Antarctic Peninsula Discovery Cruise, 4 nights of 5-star accommodation, 30 meals, and more.

Want more? Itinerary 2 extends the adventure with an additional day in Antarctica to explore Enterprise Island in Wilhelmina Bay. Itinerary 3 adds two days to the journey, exploring Danger and Paulet Islands, searching for Emperor penguins, visiting Hope Bay and more.

Offer available for a limited time or until sold out. TRIP A DEAL PTY LTD: 50149240433

Updated: 01 Aug 2025 13:02:29

Have a question about this deal? We're here to help.
Call our friendly team on 1300 158 912

1

FREQUENT
FLYER



Trip
aDeal



ARGENTINA ● ANTARCTICA

The Offer

Want more? Upgrade your stateroom, or extend your experience with Arrive Early or Stay Behind options available in Buenos Aires, Argentina

Offer available for a limited time or until sold out. TRIP A DEAL PTY LTD: 50149240433

Updated: 01 Aug 2025 13:02:29

Have a question about this deal? We're here to help.
Call our friendly team on 1300 158 912



16-DAY CRUISE PACKAGE | LAST MINUTE LUXURY ANTARCTICA

The Itinerary

Itinerary 1

Day 1 Australia (or New Zealand) - Buenos Aires, Argentina

Today, at the appropriate time, make your own way to the airport to board your flight to Buenos Aires, the first stop on your journey to Antarctica! Upon arrival at Buenos Aires Airport, be welcomed and transferred to the hotel.

Buenos Aires is one of the largest cities in Latin America. With a wide range of cultural offerings and stunning sights, it is generally the starting point for most Argentinean experiences. Let yourself be seduced by its beautiful busy streets with its unique mixture of European and Latin cultures. Enjoy grand European palaces, cute cafés and abundant parks.

Please note: Due to flight times and scheduling some customers may be required to depart Day 0. Flight times will be confirmed on your final documentation which you will receive at least 4-6 weeks prior to departure.

Overnight: Sofitel Hotel or similar, Buenos Aires
Meals included: In-Flight

Day 2 Buenos Aires - Ushuaia, Argentina - Embark SH Minerva 9-night Antarctica Cruise

Early this morning you will be transferred to Buenos Aires Airport for the internal charter flight to Ushuaia.

Ushuaia is the southernmost city in Argentina. Due to its location near the South Pole, it has approximately 18 hours of sunlight in the summer, whereas in the winter only around 8. Ushuaia offers pristine places, waiting for you to discover them and live the adventure of being at "the world's end".

Upon arrival, be transferred aboard your boutique ship before departing for your journey through one of the most captivating wilderness regions of the world.

Swan Hellenic's SH Minerva
Meals included: Breakfast; Dinner

Day 3 Cruising

Sea days are perfect opportunities to sit back and let the world go by. The ship's observation decks provide stunning views of the passing ocean, mingle with other passengers and share your experiences of this incredible trip or head to our library which is stocked full of reference books. Get an expert's view in one of the on-board lectures or perhaps perfect your photography skills with invaluable advice from the onboard professional photographers.

Swan Hellenic's SH Minerva
Meals included: Breakfast; Lunch; Dinner

Day 4 Cruising

Swan Hellenic's SH Minerva
Meals included: Breakfast; Lunch; Dinner



16-DAY CRUISE PACKAGE | LAST MINUTE LUXURY ANTARCTICA

The Itinerary

Itinerary 1

Day 5 Mikkelsen Harbour - Curtiss Bay, Antarctica

Mikkelsen Harbour is a sheltered bay on the south side of Trinity Island in the Palmer Archipelago, Antarctica. Named after Danish Arctic explorer Ejnar Mikkelsen, the harbour was first charted by the French Antarctic Expedition under Jean-Baptiste Charcot in the early 20th century. It served as a key anchorage for sealing and whaling vessels during the late 19th and early 20th centuries. Today, the harbour is renowned for its historical significance and natural beauty. D'Hainaut Island, located within the harbour, is home to a Gentoo penguin colony and features an Argentine refuge hut, Refuge Caillet-Bois, established in 1954. The area is also known for its whale bones scattered along the beach, remnants of past whaling activities. Mikkelsen Harbour remains a popular stop for expedition cruises, offering opportunities for wildlife observation and exploration of its rich history.

Curtiss Bay is characterised by its often large icebergs, impressive glacier-lined coves where calving events are common, and the possibility of spotting whales and seals. The area offers a rewarding Zodiac cruising experience, providing stunning views and often glimpses of small Chinstrap penguin and blue-eyed shag colonies.

Please note: It may be necessary for Swan Hellenic to vary an expedition itinerary as a result of adverse weather or ocean conditions. Swan Hellenic will endeavour to ensure that any expedition takes place as close as reasonably practicable to the published expedition's schedules and itineraries but, at times, this may not be possible due to weather events beyond its control.

Swan Hellenic's SH Minerva

Meals included: Breakfast; Lunch; Dinner

Day 6 Neko Harbour - Brown Station

Neko Harbour is a picturesque inlet located on the Antarctic Peninsula along the coast of Andvord Bay. Surrounded by towering glaciers and snow-covered peaks, it is one of the few places on the continent where visitors can set foot on the mainland. Named after the Scottish whaling ship Neko, which operated in the area in the early 20th century, the harbour is home to gentoo penguin colonies and offers stunning views of calving glaciers and floating icebergs. Its calm waters and dramatic scenery make it a popular stop for Antarctic expeditions.

Further along the Danco Coast, near the picturesque Paradise Harbour, lies Brown Station (Estación Científica Almirante Brown), an Argentine scientific research station. Established in 1951, it serves as a summer-only base for various scientific studies, including biology and oceanography. While not always staffed, its scenic location at the foot of a large mountain, coupled with the resident Gentoo penguin colony, makes it a popular stop for tourist expedition ships to Antarctica.

Swan Hellenic's SH Minerva

Meals included: Breakfast; Lunch; Dinner



16-DAY CRUISE PACKAGE | LAST MINUTE LUXURY ANTARCTICA

The Itinerary

Itinerary 1

Day 7 Damoy Point - Port Lockroy

Damoy Point is a scenic headland located on Wiencke Island in the Palmer Archipelago, Antarctica. It is known for its historic significance as the site of a former British summer airstrip and transit station used from the 1970s to the 1990s to support research operations. The Damoy Hut, now preserved as a historic site, remains on the point and offers insight into the logistics of past Antarctic exploration. Surrounded by icy waters and frequented by penguins, Damoy Point is a popular stop for expedition cruises exploring the region.

Nearby, nestled on Goudier Island in a natural harbor, lies Port Lockroy. Originally a secret British military base during WWII's Operation Tabarin, it later became a scientific research station before being abandoned. Since 1996, also managed by the UKAHT, Port Lockroy operates as a museum and the world's southernmost public post office, affectionately known as the "Penguin Post Office."

Swan Hellenic's SH Minerva

Meals included: Breakfast; Lunch; Dinner

Day 8 Deception Island - Whalers Bay - Half Moon Island Antarctica

Deception Island, part of the South Shetland Islands, is a unique, horseshoe-shaped active volcano with a flooded caldera forming a natural harbour called Port Foster. Its volcanic activity is evident in the steaming beaches and barren, ash-layered landscapes, with significant eruptions recorded in the 60s, leading to the abandonment of scientific stations. Despite its turbulent past, including a history as a whaling station, it's now a popular destination to witness geothermal activity and explore the remnants of its dramatic history.

Nestled within the caldera of an active volcano is Whalers Bay, with its unique horseshoe shape in sheltered waters that made it a prime location for early 20th century whaling operations. The bay provides safe anchorage for ships and offers a unique glimpse of maritime history.

Half Moon Island, a smaller, crescent-shaped island in the South Shetlands between Livingston and Greenwich Islands, is a haven for wildlife. It's home to a significant breeding colony of Chinstrap penguins, along with various other seabirds like Antarctic terns, skuas, and blue-eyed shags. Weddell and fur seals are also frequent visitors to its cobbled beaches.

Swan Hellenic's SH Minerva

Meals included: Breakfast; Lunch; Dinner

Offer available for a limited time or until sold out. TRIP A DEAL PTY LTD: 50149240433

Updated: 01 Aug 2025 13:02:29

Have a question about this deal? We're here to help.
Call our friendly team on 1300 158 912



16-DAY CRUISE PACKAGE | LAST MINUTE LUXURY ANTARCTICA

The Itinerary

Itinerary 1

Day 9 Cruising

Sea days are perfect opportunities to sit back and let the world go by. The ship's observation decks provide stunning views of the passing ocean, mingle with other passengers and share your experiences of this incredible trip or head to our library which is stocked full of reference books. Get an expert's view in one of the on-board lectures or perhaps perfect your photography skills with invaluable advice from the onboard professional photographers.

Swan Hellenic's SH Minerva

Meals included: Breakfast; Lunch; Dinner

Day 10 Ushuaia (overnight), Argentina

Arrive early evening to stay overnight in Ushuaia.

Ushuaia is the southernmost city in the world, located on the southern tip of Argentina in Tierra del Fuego. Often referred to as the "End of the World," it sits between the Martial Mountain Range and the Beagle Channel. Ushuaia is a popular gateway for Antarctic cruises, with its picturesque setting and proximity to the Southern Ocean. The city offers a range of outdoor activities, including hiking, skiing, and wildlife watching, and has a rich history tied to its early settlers, maritime heritage, and penal colony. Its unique location makes it a fascinating blend of adventure and natural beauty.

Swan Hellenic's SH Minerva

Meals included: Breakfast; Lunch; Dinner

Day 11 Disembark Ushuaia - Buenos Aires, Argentina

Disembark this morning and at the appropriate time, be transferred to the airport for the return charter flight back to Buenos Aires.

Upon arrival into Buenos Aires, be met at the airport and transferred to your hotel to enjoy a few more days in this captivating city.

Overnight: Palladio Hotel MGallery or similar, Buenos Aires

Meals included: Breakfast

Day 12 Buenos Aires - Free Day

Today is your day to relish at your own pace.

Delight in the sights of The May Square, or Plaza de Mayo, a pivotal and iconic square in Buenos Aires, situated just behind the Pink House. It's a must-visit, as most images of the Pink House originate from this vantage point.

Take a leisurely stroll down Avenue 9th of July, known as Avenida 9 de Julio in Spanish, celebrated as one of Buenos Aires' primary thoroughfares and renowned as the widest avenue globally. 9 de Julio Avenue offers access to numerous significant landmarks in Buenos Aires, including the iconic Obelisk, the bustling Corrientes Avenue, and the prestigious Colón Theater.

Wander through La Boca, a destination firmly etched on the bucket lists of many Buenos Aires enthusiasts. Encounter the legendary vividly painted houses and the picturesque corner dwelling, El Caminito, both recognised as iconic landmarks of the city.



16-DAY CRUISE PACKAGE | LAST MINUTE LUXURY ANTARCTICA

The Itinerary

Itinerary 1

Overnight: Palladio Hotel MGallery or similar, Buenos Aires

Meals included: Breakfast

Day 13 Buenos Aires - Free Day

Continue your exploration of this vibrant and passionate city at your own leisurely pace. Perhaps begin by admiring *Floralis Genérica*, an imposing metal flower sculpture nestled in the Recoleta neighbourhood of Buenos Aires. This magnificent artwork gracefully opens during the day and gracefully closes at night. On sunny days, it casts enchanting reflections in the shimmering water pool beneath its petals. Make your way to Puerto Madero, a transformed district situated within the historic harbour of Buenos Aires. It stands as a chic and upscale enclave, boasting a plethora of restaurants, cafes, corporate headquarters, and impressive skyscrapers.

While in Buenos Aires, a visit to one of the city's most significant landmarks is a must: *Puente de la Mujer*, also known as the Woman's Bridge. This striking architectural marvel spans the heart of Puerto Madero, and the best part is, it's free to explore and cross. Venture into the charming neighbourhood of San Telmo, the oldest in Buenos Aires, where you'll encounter a treasure trove of beautiful old buildings and traditional coffee shops and bars. This historic neighbourhood extends from Plaza de Mayo, branching out to the right of this central square. With each step, you'll delve deeper into the city's rich cultural tapestry. Enjoy your day of discovery!

Overnight: Palladio Hotel MGallery or similar, Buenos Aires

Meals included: Breakfast

Day 14 Buenos Aires, Argentina - Australia (or New Zealand)

The time has come to begin the journey back home. At the appropriate time, be picked up and transferred to Buenos Aires Airport for your flight home.

Meals included: Breakfast; In-Flight

Day 15 In transit

In transit

Meals included: In-Flight

Day 16 Arrive in Australia (or New Zealand)

Welcome home!

Meals included: None

Offer available for a limited time or until sold out. TRIP A DEAL PTY LTD: 50149240433

Updated: 01 Aug 2025 13:02:29

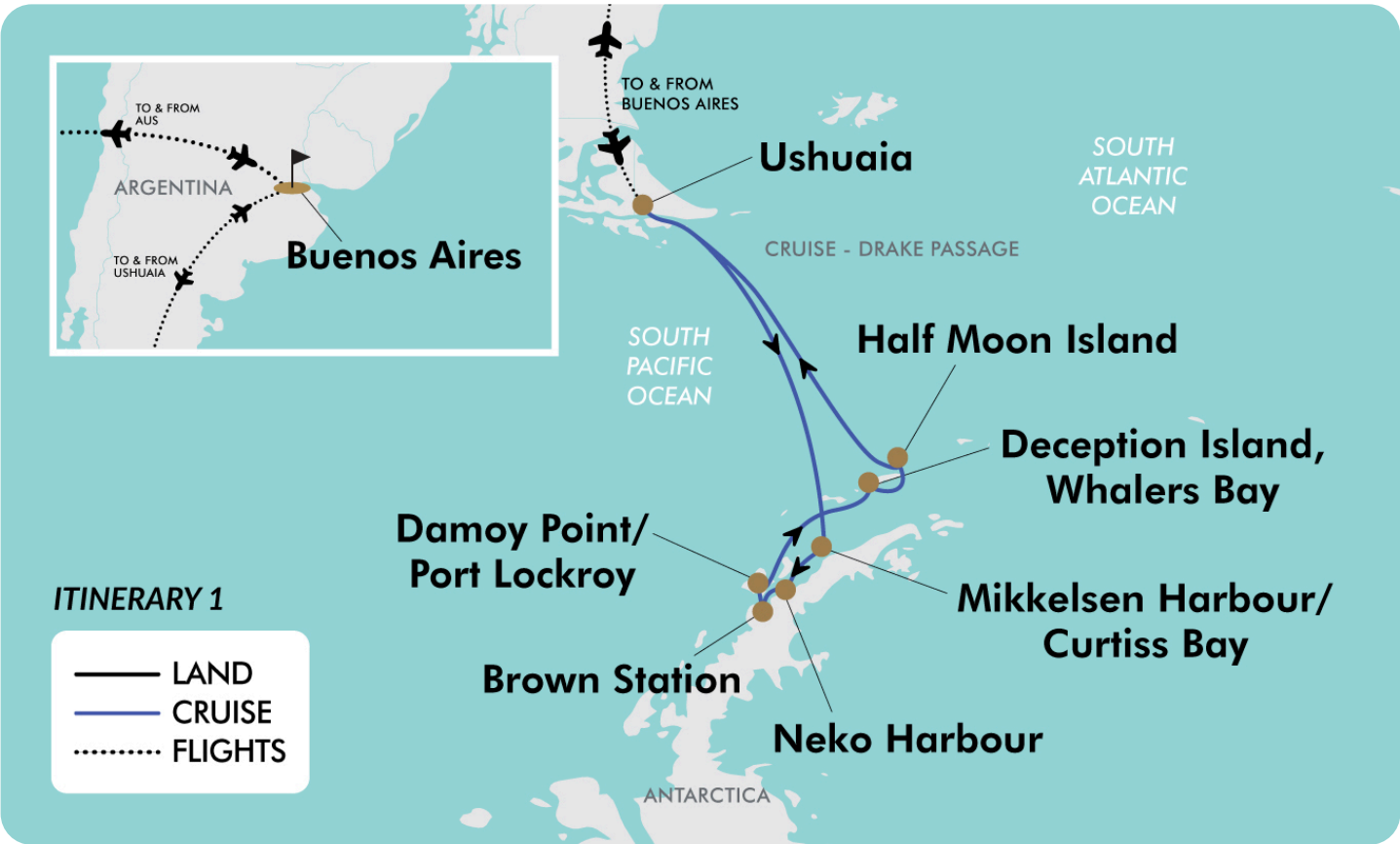
Have a question about this deal? We're here to help.
Call our friendly team on 1300 158 912



16-DAY CRUISE PACKAGE | LAST MINUTE LUXURY ANTARCTICA

The Map

Itinerary 1



Offer available for a limited time or until sold out. TRIP A DEAL PTY LTD: 50149240433

Updated: 01 Aug 2025 13:02:29



16-DAY CRUISE PACKAGE | LAST MINUTE LUXURY ANTARCTICA

The Itinerary

Itinerary 2

Day 1 Australia (or New Zealand) - Buenos Aires, Argentina

Today, at the appropriate time, make your own way to the airport to board your flight to Buenos Aires, the first stop on your journey to Antarctica! Upon arrival at Buenos Aires Airport, be welcomed and transferred to the hotel.

Buenos Aires is one of the largest cities in Latin America. With a wide range of cultural offerings and stunning sights, it is generally the starting point for most Argentinean experiences. Let yourself be seduced by its beautiful busy streets with its unique mixture of European and Latin cultures. Enjoy grand European palaces, cute cafés and abundant parks.

Please note: Due to flight times and scheduling some customers may be required to depart Day 0. Flight times will be confirmed on your final documentation which you will receive at least 4-6 weeks prior to departure.

Overnight: Sofitel Hotel or similar, Buenos Aires
Meals included: In-Flight

Day 2 Buenos Aires - Ushuaia, Argentina - Embark SH Minerva 10-night Antarctica Cruise

Early this morning you will be transferred to Buenos Aires Airport for the internal charter flight to Ushuaia.

Ushuaia is the southernmost city in Argentina. Due to its location near the South Pole, it has approximately 18 hours of sunlight in the summer, whereas in the winter only around 8. Ushuaia offers pristine places, waiting for you to discover them and live the adventure of being at "the world's end".

Upon arrival, be transferred aboard your boutique ship before departing for your journey through one of the most captivating wilderness regions of the world.

Swan Hellenic's SH Minerva
Meals included: Breakfast; Dinner

Day 3 Cruising

Sea days are perfect opportunities to sit back and let the world go by. The ship's observation decks provide stunning views of the passing ocean, mingle with other passengers and share your experiences of this incredible trip or head to our library which is stocked full of reference books. Get an expert's view in one of the on-board lectures or perhaps perfect your photography skills with invaluable advice from the onboard professional photographers.

Swan Hellenic's SH Minerva
Meals included: Breakfast; Lunch; Dinner

Day 4 Cruising

Swan Hellenic's SH Minerva
Meals included: Breakfast; Lunch; Dinner



16-DAY CRUISE PACKAGE | LAST MINUTE LUXURY ANTARCTICA

The Itinerary

Itinerary 2

Day 5 Mikkelsen Harbour - Curtiss Bay, Antarctica

Mikkelsen Harbour is a sheltered bay on the south side of Trinity Island in the Palmer Archipelago, Antarctica. Named after Danish Arctic explorer Ejnar Mikkelsen, the harbour was first charted by the French Antarctic Expedition under Jean-Baptiste Charcot in the early 20th century. It served as a key anchorage for sealing and whaling vessels during the late 19th and early 20th centuries. Today, the harbour is renowned for its historical significance and natural beauty. D'Hainaut Island, located within the harbour, is home to a Gentoo penguin colony and features an Argentine refuge hut, Refuge Caillet-Bois, established in 1954. The area is also known for its whale bones scattered along the beach, remnants of past whaling activities. Mikkelsen Harbour remains a popular stop for expedition cruises, offering opportunities for wildlife observation and exploration of its rich history.

Curtiss Bay is characterised by its often large icebergs, impressive glacier-lined coves where calving events are common, and the possibility of spotting whales and seals. The area offers a rewarding Zodiac cruising experience, providing stunning views and often glimpses of small Chinstrap penguin and blue-eyed shag colonies.

Please note: It may be necessary for Swan Hellenic to vary an expedition itinerary as a result of adverse weather or ocean conditions. Swan Hellenic will endeavour to ensure that any expedition takes place as close as reasonably practicable to the published expedition's schedules and itineraries but, at times, this may not be possible due to weather events beyond its control.

Swan Hellenic's SH Minerva

Meals included: Breakfast; Lunch; Dinner

Day 6 Neko Harbour - Brown Station

Neko Harbour is a picturesque inlet located on the Antarctic Peninsula along the coast of Andvord Bay. Surrounded by towering glaciers and snow-covered peaks, it is one of the few places on the continent where visitors can set foot on the mainland. Named after the Scottish whaling ship Neko, which operated in the area in the early 20th century, the harbour is home to gentoo penguin colonies and offers stunning views of calving glaciers and floating icebergs. Its calm waters and dramatic scenery make it a popular stop for Antarctic expeditions.

Further along the Danco Coast, near the picturesque Paradise Harbour, lies Brown Station (Estación Científica Almirante Brown), an Argentine scientific research station. Established in 1951, it serves as a summer-only base for various scientific studies, including biology and oceanography. While not always staffed, its scenic location at the foot of a large mountain, coupled with the resident Gentoo penguin colony, makes it a popular stop for tourist expedition ships to Antarctica.

Swan Hellenic's SH Minerva

Meals included: Breakfast; Lunch; Dinner



16-DAY CRUISE PACKAGE | LAST MINUTE LUXURY ANTARCTICA

The Itinerary

Itinerary 2

Day 7 Damoy Point - Port Lockroy

Damoy Point is a scenic headland located on Wiencke Island in the Palmer Archipelago, Antarctica. It is known for its historic significance as the site of a former British summer airstrip and transit station used from the 1970s to the 1990s to support research operations. The Damoy Hut, now preserved as a historic site, remains on the point and offers insight into the logistics of past Antarctic exploration. Surrounded by icy waters and frequented by penguins, Damoy Point is a popular stop for expedition cruises exploring the region.

Nearby, nestled on Goudier Island in a natural harbor, lies Port Lockroy. Originally a secret British military base during WWII's Operation Tabarin, it later became a scientific research station before being abandoned. Since 1996, also managed by the UKAHT, Port Lockroy operates as a museum and the world's southernmost public post office, affectionately known as the "Penguin Post Office."

Swan Hellenic's SH Minerva

Meals included: Breakfast; Lunch; Dinner

Day 8 Enterprise Island - Portal Point

Enterprise Island, situated in Wilhelmina Bay off the Antarctic Peninsula, holds a poignant reminder of Antarctica's whaling past. Its primary attraction is the striking wreck of the Norwegian whaling factory ship, the *Gouvernøren*. Its bow and bridge remain above water, a ghostly testament to an era when these waters were heavily exploited for whale oil. Today, the wreck is often frequented by Antarctic terns and offers a unique historical counterpoint to the region's stunning natural beauty, with various other whaling artefacts scattered around the shoreline.

Portal Point, a narrow stretch of land on the Recluse Peninsula of Graham Land, serves as a significant gateway to the Antarctic continent. Named for its role in providing a route to the high polar plateau, it once housed a British refuge hut (Cape Reclus Refuge), established in 1956, to facilitate survey work and provide shelter for explorers. Though the hut was later dismantled and moved to the Falkland Islands Museum, the point itself remains a popular landing site, offering panoramic views, the occasional Weddell seal sighting, and a sense of standing on the Antarctic mainland.

Swan Hellenic's SH Minerva

Meals included: Breakfast; Lunch; Dinner



16-DAY CRUISE PACKAGE | LAST MINUTE LUXURY ANTARCTICA

The Itinerary

Itinerary 2

Day 9 Deception Island - Whalers Bay - Half Moon Island Antarctica

Deception Island, part of the South Shetland Islands, is a unique, horseshoe-shaped active volcano with a flooded caldera forming a natural harbour called Port Foster. Its volcanic activity is evident in the steaming beaches and barren, ash-layered landscapes, with significant eruptions recorded in the 60s, leading to the abandonment of scientific stations. Despite its turbulent past, including a history as a whaling station, it's now a popular destination to witness geothermal activity and explore the remnants of its dramatic history.

Nestled within the caldera of an active volcano is Whalers Bay, with its unique horseshoe shape in sheltered waters that made it a prime location for early 20th century whaling operations. The bay provides safe anchorage for ships and offers a unique glimpse of maritime history.

Half Moon Island, a smaller, crescent-shaped island in the South Shetlands between Livingston and Greenwich Islands, is a haven for wildlife. It's home to a significant breeding colony of Chinstrap penguins, along with various other seabirds like Antarctic terns, skuas, and blue-eyed shags. Weddell and fur seals are also frequent visitors to its cobbled beaches.

Swan Hellenic's SH Minerva

Meals included: Breakfast; Lunch; Dinner

Day 10 Cruising

Sea days are perfect opportunities to sit back and let the world go by. The ship's observation decks provide stunning views of the passing ocean, mingle with other passengers and share your experiences of this incredible trip or head to our library which is stocked full of reference books. Get an expert's view in one of the on-board lectures or perhaps perfect your photography skills with invaluable advice from the onboard professional photographers.

Swan Hellenic's SH Minerva

Meals included: Breakfast; Lunch; Dinner

Day 11 Ushuaia (overnight), Argentina

Arrive early evening to stay overnight in Ushuaia.

Ushuaia is the southernmost city in the world, located on the southern tip of Argentina in Tierra del Fuego. Often referred to as the "End of the World," it sits between the Martial Mountain Range and the Beagle Channel. Ushuaia is a popular gateway for Antarctic cruises, with its picturesque setting and proximity to the Southern Ocean. The city offers a range of outdoor activities, including hiking, skiing, and wildlife watching, and has a rich history tied to its early settlers, maritime heritage, and penal colony. Its unique location makes it a fascinating blend of adventure and natural beauty.

Swan Hellenic's SH Minerva

Meals included: Breakfast; Lunch; Dinner



16-DAY CRUISE PACKAGE | LAST MINUTE LUXURY ANTARCTICA

The Itinerary

Itinerary 2

Day 12 Disembark Ushuaia - Buenos Aires, Argentina

Disembark this morning and at the appropriate time, be transferred to the airport for the return charter flight back to Buenos Aires.

Upon arrival into Buenos Aires, be met at the airport and transferred to your hotel to enjoy a few more days in this captivating city.

Overnight: Palladio Hotel MGallery or similar, Buenos Aires

Meals included: Breakfast

Day 13 Buenos Aires - Free Day

Today is your day to relish at your own pace.

Delight in the sights of The May Square, or Plaza de Mayo, a pivotal and iconic square in Buenos Aires, situated just behind the Pink House. It's a must-visit, as most images of the Pink House originate from this vantage point.

Take a leisurely stroll down Avenue 9th of July, known as Avenida 9 de Julio in Spanish, celebrated as one of Buenos Aires' primary thoroughfares and renowned as the widest avenue globally. 9 de Julio Avenue offers access to numerous significant landmarks in Buenos Aires, including the iconic Obelisk, the bustling Corrientes Avenue, and the prestigious Colón Theater.

Wander through La Boca, a destination firmly etched on the bucket lists of many Buenos Aires enthusiasts. Encounter the legendary vividly painted houses and the picturesque corner dwelling, El Caminito, both recognised as iconic landmarks of the city.

Overnight: Palladio Hotel MGallery or similar, Buenos Aires

Meals included: Breakfast

Day 14 Buenos Aires - Free Day

Continue your exploration of this vibrant and passionate city at your own leisurely pace. Perhaps begin by admiring Floralís Genérica, an imposing metal flower sculpture nestled in the Recoleta neighbourhood of Buenos Aires. This magnificent artwork gracefully opens during the day and gracefully closes at night. On sunny days, it casts enchanting reflections in the shimmering water pool beneath its petals. Make your way to Puerto Madero, a transformed district situated within the historic harbour of Buenos Aires. It stands as a chic and upscale enclave, boasting a plethora of restaurants, cafes, corporate headquarters, and impressive skyscrapers.

While in Buenos Aires, a visit to one of the city's most significant landmarks is a must: Puente de la Mujer, also known as the Woman's Bridge. This striking architectural marvel spans the heart of Puerto Madero, and the best part is, it's free to explore and cross. Venture into the charming neighbourhood of San Telmo, the oldest in Buenos Aires, where you'll encounter a treasure trove of beautiful old buildings and traditional coffee shops and bars. This historic neighbourhood extends from Plaza de Mayo, branching out to the right of this central square. With each step, you'll delve deeper into the city's rich cultural tapestry. Enjoy your day of discovery!

Overnight: Palladio Hotel MGallery or similar, Buenos Aires

Meals included: Breakfast

Offer available for a limited time or until sold out. TRIP A DEAL PTY LTD: 50149240433

Updated: 01 Aug 2025 13:02:29

Have a question about this deal? We're here to help.
Call our friendly team on 1300 158 912





16-DAY CRUISE PACKAGE | LAST MINUTE LUXURY ANTARCTICA

The Itinerary

Itinerary 2

Day 15 Buenos Aires, Argentina - Australia (or New Zealand)

The time has come to begin the journey back home. At the appropriate time, be picked up and transferred to Buenos Aires Airport for your flight home.

Meals included: Breakfast; In-Flight

Day 16 In transit

In transit

Meals included: In-Flight

Day 17 Arrive in Australia (or New Zealand)

Welcome home!

Meals included: None



16-DAY CRUISE PACKAGE | LAST MINUTE LUXURY ANTARCTICA

The Map

Itinerary 2



Offer available for a limited time or until sold out. TRIP A DEAL PTY LTD: 50149240433 Updated: 01 Aug 2025 13:02:29



16-DAY CRUISE PACKAGE | LAST MINUTE LUXURY ANTARCTICA

The Itinerary

Itinerary 3

Day 1 Australia (or New Zealand) - Buenos Aires, Argentina

Today, at the appropriate time, make your own way to the airport to board your flight to Buenos Aires, the first stop on your journey to Antarctica! Upon arrival at Buenos Aires Airport, be welcomed and transferred to the hotel.

Buenos Aires is one of the largest cities in Latin America. With a wide range of cultural offerings and stunning sights, it is generally the starting point for most Argentinean experiences. Let yourself be seduced by its beautiful busy streets with its unique mixture of European and Latin cultures. Enjoy grand European palaces, cute cafés and abundant parks.

Please note: Due to flight times and scheduling some customers may be required to depart Day 0. Flight times will be confirmed on your final documentation which you will receive at least 4-6 weeks prior to departure.

Overnight: Sofitel Hotel or similar, Buenos Aires
Meals included: In-Flight

Day 2 Buenos Aires - Ushuaia, Argentina - Embark SH Minerva 11-night Antarctica Cruise

Early this morning you will be transferred to Buenos Aires Airport for the internal charter flight to Ushuaia.

Ushuaia is the southernmost city in Argentina. Due to its location near the South Pole, it has approximately 18 hours of sunlight in the summer, whereas in the winter only around 8. Ushuaia offers pristine places, waiting for you to discover them and live the adventure of being at "the world's end".

Upon arrival, be transferred aboard your boutique ship before departing for your journey through one of the most captivating wilderness regions of the world.

Swan Hellenic's SH Minerva
Meals included: Breakfast; Dinner

Day 3 Cruising

Sea days are perfect opportunities to sit back and let the world go by. The ship's observation decks provide stunning views of the passing ocean, mingle with other passengers and share your experiences of this incredible trip or head to our library which is stocked full of reference books. Get an expert's view in one of the on-board lectures or perhaps perfect your photography skills with invaluable advice from the onboard professional photographers.

Swan Hellenic's SH Minerva
Meals included: Breakfast; Lunch; Dinner

Day 4 Cruising

Swan Hellenic's SH Minerva
Meals included: Breakfast; Lunch; Dinner



16-DAY CRUISE PACKAGE | LAST MINUTE LUXURY ANTARCTICA

The Itinerary

Itinerary 3

Day 5 Danger Island - Paulet Island, Antarctica

The Danger Islands, a small archipelago located east-southeast of Joinville Island near the tip of the Antarctic Peninsula, were named by James Clark Ross in 1842. Despite their formidable name, these islands are a crucial biodiversity hotspot, particularly for Adélie penguins, boasting one of the largest "super colonies" of this species in the Antarctic. Their remote and often ice-bound nature has historically limited human access, helping to preserve their pristine environment.

Paulet Island, a roughly circular island southeast of Dundee Island, is a significant volcanic landform and a prominent site in Antarctic history and wildlife. It is home to a massive breeding colony of Adélie penguins, making it an Important Bird Area.

Please note: It may be necessary for Swan Hellenic to vary an expedition itinerary as a result of adverse weather or ocean conditions. Swan Hellenic will endeavour to ensure that any expedition takes place as close as reasonably practicable to the published expedition's schedules and itineraries but, at times, this may not be possible due to weather events beyond its control.

Swan Hellenic's SH Minerva

Meals included: Breakfast; Lunch; Dinner

Day 6 Emperor Penguin Rookery - Penguin Point

Penguin Point is a particular site renowned for supporting a significant breeding colony of Adélie penguins. It's an Important Bird Area, where visitors can observe these lively birds in their natural habitat, often alongside Weddell and Antarctic fur seals hauling out on the shores.

Another "Penguin Point" exists on the George V Land, on the mainland of East Antarctica, discovered and named by the Australasian Antarctic Expedition in 1912 due to the abundance of penguins observed there.

Swan Hellenic's SH Minerva

Meals included: Breakfast; Lunch; Dinner

Day 7 Brown Bluff - Hope Bay

Brown Bluff, a distinctive, flat-topped volcanic mountain on the Tabarin Peninsula, stands as a dramatic example of a "tuya", a volcano that erupted beneath a glacier, creating its unique shape. Its striking reddish-brown cliffs, composed of volcanic ash and embedded with "volcanic bombs," offer a starkly beautiful landscape. Beyond its fascinating geology, Brown Bluff is a major wildlife haven, home to a large Adélie penguin colony and a smaller Gentoo penguin population, along with various other seabirds and often visited by Weddell and leopard seals.

Hope Bay, located at the northern tip of the Antarctic Peninsula, is a historically significant and biologically rich inlet. It gained fame as the wintering site for three members of the Swedish Antarctic Expedition in 1903 after their ship was lost, with their makeshift stone hut still standing as a historic monument. Today, Hope Bay is home to Argentina's Esperanza Base, a year-round scientific station and one of only two civilian settlements in Antarctica, notable for being the birthplace of the first person born on the continent. The bay also hosts one of Antarctica's largest Adélie penguin colonies, making it a vibrant hub for both human activity and abundant wildlife.



16-DAY CRUISE PACKAGE | LAST MINUTE LUXURY ANTARCTICA

The Itinerary

Itinerary 3

Swan Hellenic's SH Minerva

Meals included: Breakfast; Lunch; Dinner

Day 8 Mikkelsen Harbour - Hydrurga Rocks

Mikkelsen Harbour is a sheltered bay on the south side of Trinity Island in the Palmer Archipelago, Antarctica. Named after Danish Arctic explorer Ejnar Mikkelsen, the harbour was first charted by the French Antarctic Expedition under Jean-Baptiste Charcot in the early 20th century. It served as a key anchorage for sealing and whaling vessels during the late 19th and early 20th centuries. Today, the harbour is renowned for its historical significance and natural beauty. Mikkelsen Harbour remains a popular stop for expedition cruises, offering opportunities for wildlife observation and exploration of its rich history.

D'Hainaut Island, located within the harbour, is home to a Gentoo penguin colony and features an Argentine refuge hut, Refuge Caillet-Bois, established in 1954. The area is also known for its whale bones scattered along the beach, remnants of past whaling activities.

Hydrurga Rocks are a pair of small, remote islets, ideal to absorb the vast, surrounding expanse of Antarctica. They also offer a great opportunity to observe nesting Chinstrap penguins up close.

Swan Hellenic's SH Minerva

Meals included: Breakfast; Lunch; Dinner

Day 9 Damoy Point - Port Lockroy

Damoy Point is a scenic headland located on Wiencke Island in the Palmer Archipelago, Antarctica. It is known for its historic significance as the site of a former British summer airstrip and transit station used from the 1970s to the 1990s to support research operations. The Damoy Hut, now preserved as a historic site, remains on the point and offers insight into the logistics of past Antarctic exploration. Surrounded by icy waters and frequented by penguins, Damoy Point is a popular stop for expedition cruises exploring the region.

Nearby, nestled on Goudier Island in a natural harbor, lies Port Lockroy. Originally a secret British military base during WWII's Operation Tabarin, it later became a scientific research station before being abandoned. Since 1996, also managed by the UKAHT, Port Lockroy operates as a museum and the world's southernmost public post office, affectionately known as the "Penguin Post Office."

Swan Hellenic's SH Minerva

Meals included: Breakfast; Lunch; Dinner

Offer available for a limited time or until sold out. TRIP A DEAL PTY LTD: 50149240433

Updated: 01 Aug 2025 13:02:29

Have a question about this deal? We're here to help.
Call our friendly team on 1300 158 912



16-DAY CRUISE PACKAGE | LAST MINUTE LUXURY ANTARCTICA

The Itinerary

Itinerary 3

Day 10 Deception Island - Whalers Bay - Elephant Point, South Shetland Islands

Deception Island, part of the South Shetland Islands, is a unique, horseshoe-shaped active volcano with a flooded caldera forming a natural harbour called Port Foster. Its volcanic activity is evident in the steaming beaches and barren, ash-layered landscapes, with significant eruptions recorded in the 60s, leading to the abandonment of scientific stations. Despite its turbulent past, including a history as a whaling station, it's now a popular destination to witness geothermal activity and explore the remnants of its dramatic history.

Nestled within the caldera of an active volcano is Whalers Bay, with its unique horseshoe shape in sheltered waters that made it a prime location for early 20th century whaling operations. The bay provides safe anchorage for ships and offers a unique glimpse of maritime history.

Elephant Point is a small, ice-free promontory on Livingston Island in the South Shetland Islands. It is well known for its population of elephant seals which are the inspiration for its name. It is an ecologically significant area and a site of interest for scientific research and Antarctic expeditions.

Swan Hellenic's SH Minerva

Meals included: Breakfast; Lunch; Dinner

Day 11 Cruising

Sea days are perfect opportunities to sit back and let the world go by. The ship's observation decks provide stunning views of the passing ocean, mingle with other passengers and share your experiences of this incredible trip or head to our library which is stocked full of reference books. Get an expert's view in one of the on-board lectures or perhaps perfect your photography skills with invaluable advice from the onboard professional photographers.

Swan Hellenic's SH Minerva

Meals included: Breakfast; Lunch; Dinner

Day 12 Ushuaia (overnight), Argentina

Arrive early evening to stay overnight in Ushuaia.

Ushuaia is the southernmost city in the world, located on the southern tip of Argentina in Tierra del Fuego. Often referred to as the "End of the World," it sits between the Martial Mountain Range and the Beagle Channel. Ushuaia is a popular gateway for Antarctic cruises, with its picturesque setting and proximity to the Southern Ocean. The city offers a range of outdoor activities, including hiking, skiing, and wildlife watching, and has a rich history tied to its early settlers, maritime heritage, and penal colony. Its unique location makes it a fascinating blend of adventure and natural beauty.

Swan Hellenic's SH Minerva

Meals included: Breakfast; Lunch; Dinner

Offer available for a limited time or until sold out. TRIP A DEAL PTY LTD: 50149240433

Updated: 01 Aug 2025 13:02:29

Have a question about this deal? We're here to help.
Call our friendly team on 1300 158 912





16-DAY CRUISE PACKAGE | LAST MINUTE LUXURY ANTARCTICA

The Itinerary

Itinerary 3

Day 13 Disembark Ushuaia, Argentina - Buenos Aires, Argentina

Disembark this morning and at the appropriate time, be transferred to the airport for the return charter flight back to Buenos Aires.

Upon arrival into Buenos Aires, be met at the airport and transferred to your hotel to enjoy a few more days in this captivating city.

Overnight: Palladio Hotel MGallery or similar, Buenos Aires
Meals included: Breakfast

Day 14 Buenos Aires - Free Day

Today is your day to relish at your own pace.

Delight in the sights of The May Square, or Plaza de Mayo, a pivotal and iconic square in Buenos Aires, situated just behind the Pink House. It's a must-visit, as most images of the Pink House originate from this vantage point.

Take a leisurely stroll down Avenue 9th of July, known as Avenida 9 de Julio in Spanish, celebrated as one of Buenos Aires' primary thoroughfares and renowned as the widest avenue globally. 9 de Julio Avenue offers access to numerous significant landmarks in Buenos Aires, including the iconic Obelisk, the bustling Corrientes Avenue, and the prestigious Colón Theater.

Wander through La Boca, a destination firmly etched on the bucket lists of many Buenos Aires enthusiasts. Encounter the legendary vividly painted houses and the picturesque corner dwelling, El Caminito, both recognised as iconic landmarks of the city.

Overnight: Palladio Hotel MGallery or similar, Buenos Aires
Meals included: Breakfast

Day 15 Buenos Aires - Free Day

Continue your exploration of this vibrant and passionate city at your own leisurely pace. Perhaps begin by admiring Floralis Genérica, an imposing metal flower sculpture nestled in the Recoleta neighbourhood of Buenos Aires. This magnificent artwork gracefully opens during the day and gracefully closes at night. On sunny days, it casts enchanting reflections in the shimmering water pool beneath its petals. Make your way to Puerto Madero, a transformed district situated within the historic harbour of Buenos Aires. It stands as a chic and upscale enclave, boasting a plethora of restaurants, cafes, corporate headquarters, and impressive skyscrapers.

While in Buenos Aires, a visit to one of the city's most significant landmarks is a must: Puente de la Mujer, also known as the Woman's Bridge. This striking architectural marvel spans the heart of Puerto Madero, and the best part is, it's free to explore and cross. Venture into the charming neighbourhood of San Telmo, the oldest in Buenos Aires, where you'll encounter a treasure trove of beautiful old buildings and traditional coffee shops and bars. This historic neighbourhood extends from Plaza de Mayo, branching out to the right of this central square. With each step, you'll delve deeper into the city's rich cultural tapestry. Enjoy your day of discovery!

Overnight: Palladio Hotel MGallery or similar, Buenos Aires
Meals included: Breakfast

Offer available for a limited time or until sold out. TRIP A DEAL PTY LTD: 50149240433

Updated: 01 Aug 2025 13:02:29

Have a question about this deal? We're here to help.
Call our friendly team on 1300 158 912





16-DAY CRUISE PACKAGE | LAST MINUTE LUXURY ANTARCTICA

The Itinerary

Itinerary 3

Day 16 Buenos Aires, Argentina - Australia (or New Zealand)

The time has come to begin the journey back home. At the appropriate time, be picked up and transferred to Buenos Aires Airport for your flight home.

Meals included: Breakfast; In-Flight

Day 17 In transit

Meals included: In-Flight

Day 18 Arrive in Australia (or New Zealand)

Welcome home!

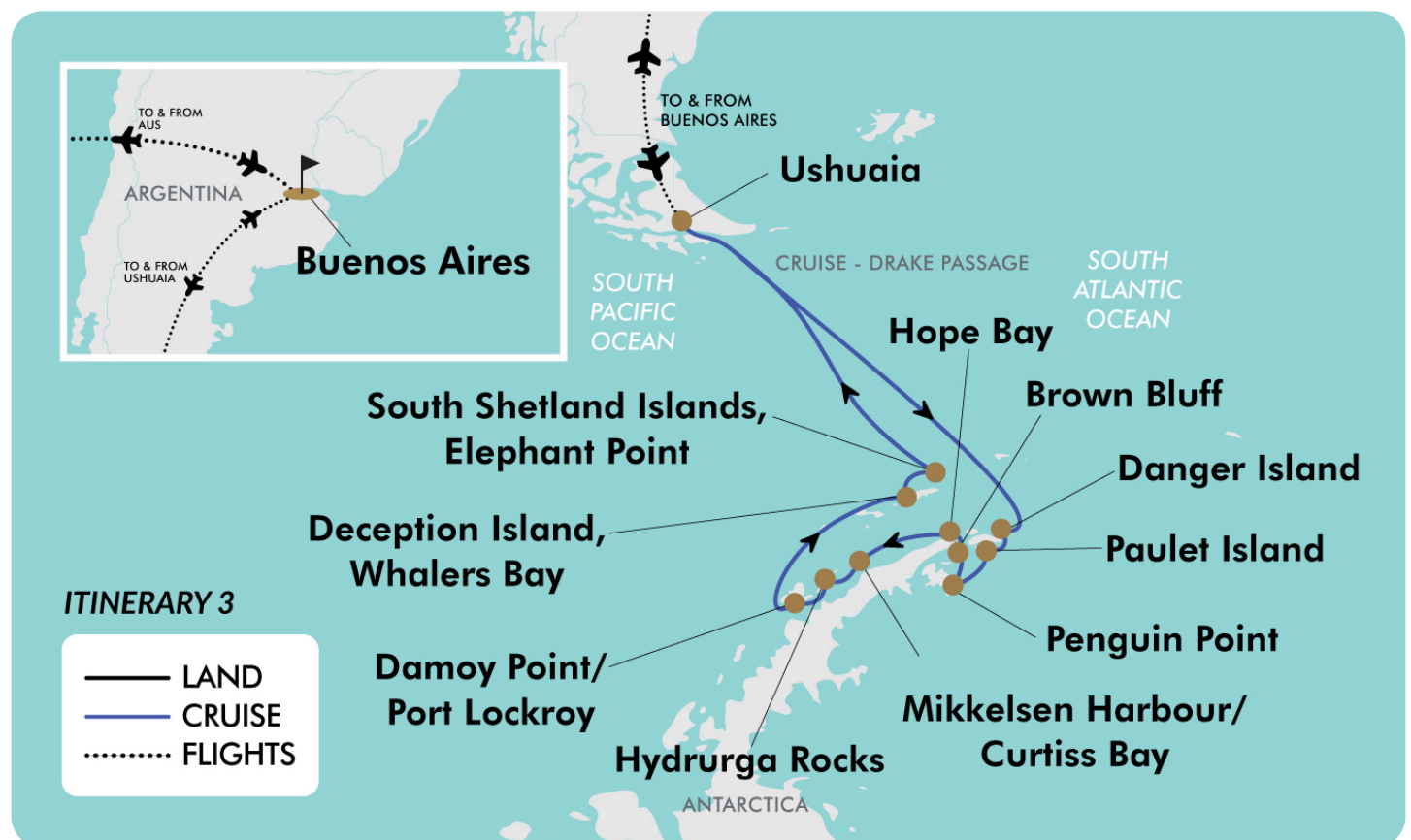
Meals included: None



16-DAY CRUISE PACKAGE | LAST MINUTE LUXURY ANTARCTICA

The Map

Itinerary 3



Offer available for a limited time or until sold out. TRIP A DEAL PTY LTD: 50149240433

Updated: 01 Aug 2025 13:02:29

Have a question about this deal? We're here to help.
Call our friendly team on 1300 158 912



16-DAY CRUISE PACKAGE | LAST MINUTE LUXURY ANTARCTICA

Tour Inclusions

HIGHLIGHTS

- Explore this frozen wonderland, impressive landscapes & extraordinary wildlife with the Swan Hellenic expedition team
- Experience a once-in-a-lifetime cruise to the most remote & pristine destination on Earth
- Connect with nature & cruise the White Continent on a five-star boutique ship
- Listen to in-depth lectures from engaging polar experts & learn tips from experienced photographers
- Delve into uncharted territories with included zodiac landings to get up close & personal with your majestic surroundings
- Witness dramatic coastlines, breathtaking scenery, fascinating history & beautiful wildlife on a once-in-a-lifetime experience
- Glide past giant icebergs, glaciers & soaring mountain-tops while looking for playful penguins in their natural habitat
- Step into the rich history of explorers, whalers, Antarctic scientists, & more

FLIGHTS

- Return international full-service flights (economy class), surcharges may apply
- Return Internal charter flight between Buenos Aires to Ushuaia

CRUISE

- Itinerary 1: 9 night Antarctic Peninsula Discovery Cruise
- Itinerary 2: 10 night Antarctica Peninsula Odyssey Cruise
- Itinerary 3: 11 night Weddell Sea Antarctica Discovery Cruise
- Including:
 - Gratuities included for the ship's crew
 - Enjoy a branded Swan Hellenic expedition parka and use of rubber boots in polar regions
 - One selected shore excursion/expedition activity per port of call (Kayaks not included, bookable for a fee on board)
 - Lecture programs by an experienced expedition team and guest speakers
 - Standard Wi-Fi
 - Self-service laundry
- Experience Swan Hellenic's 12 person hard-hulled Zodiacs to get you up close to all the action (all Zodiac landings included)

ACCOMMODATION

- 4 nights of 5-star accommodation in Buenos Aires, Argentina

DINING

- Itinerary 1: Enjoy 30 meals including all while cruising
- Itinerary 2: Enjoy 33 meals including all while cruising
- Itinerary 3: Enjoy 36 meals including all while cruising
- Including:
 - Enjoy around-the-clock access to coffee, tea, soft drinks & a curated selection of alcoholic beverages while cruising
 - Includes 24 hour room service while cruising



16-DAY CRUISE PACKAGE | LAST MINUTE LUXURY ANTARCTICA

Tour Inclusions

ESSENTIALS

- Cruise port charges, taxes & gratuities
- Airline taxes & surcharges

TRANSPORT

- Transportation by private air-conditioned vehicles

TRANSFERS

- Itinerary 1:
- Day 1: Airport to hotel
 - Day 2: Hotel to airport
 - Day 2: Airport to port
 - Day 11: Port to airport
 - Day 11: Airport to hotel
 - Day 14: Hotel to airport

- Itinerary 2:
- Day 1: Airport to hotel
 - Day 2: Hotel to airport
 - Day 2: Airport to port
 - Day 12: Port to airport
 - Day 12: Airport to hotel
 - Day 15: Hotel to airport

- Itinerary 3:
- Day 1: Airport to hotel
 - Day 2: Hotel to airport
 - Day 2: Airport to port
 - Day 13: Port to airport
 - Day 13: Airport to hotel
 - Day 16: Hotel to airport

Offer available for a limited time or until sold out. TRIP A DEAL PTY LTD: 50149240433 Updated: 01 Aug 2025 13:02:29

Have a question about this deal? We're here to help.
Call our friendly team on 1300 158 912

Important Information

**Please note: All information provided in this brochure is subject to both change and availability. Prior to purchase please check the current deal for up-to-date information. If you have already purchased this deal, the terms and conditions on your Purchase Confirmation apply and take precedence over the information in this brochure.*

Booking Information

After purchase, you will receive a receipt and a Purchase Confirmation, directing you to an online Passenger Information Form. You must complete the Passenger Information Form within 72 hours of purchase.

Any special requests, preferences and optional extras MUST be clearly stated in your Passenger Information Form. Any change requested after submitting your Passenger Information Form cannot be guaranteed, is strictly subject to availability and will incur surcharges as outlined in the Schedule of Fees below.

Please note: All countries and territories have different entry requirements in relation to vaccinations, quarantine/isolation periods and travel restrictions. Due to the evolving nature, we would ask all of our customers to monitor, meet and adhere to the specific requirements of their intended destination(s) in the lead-up to and immediately before travel, as well as any requirements post-travel upon their return.

Our Policies

Cancellation and Refund Policy

By placing a booking with us, you acknowledge the following important information:

- **we act as your booking agent;** TripADeal is a booking services provider, and curates the Travel Offers available on our website. We act as your booking agent, and we receive payment for the Booking Services as part of the booking price, however, we do not provide any of the Travel Services (flights, accommodation, tours or other products or services) included in your booking – the Travel Services are provided by a number of third party Travel Suppliers.

- **each booking is unique;** our Travel Offers are made up of a variety of different components and are, during the booking process, uniquely tailored to suit your requirements, for example, departure dates and ports, flight and room upgrades, tour inclusions, etc.

- **changes/modifications to your booking may not be possible;** once your booking has been made, changes or modifications may not be possible, and where possible, may incur a fee. It is important to ensure that the information you provide during the booking process is accurate and up to date, and that you read the Travel Offer carefully before placing your order.

- **Travel Offers are a package;** our Travel Offers have been curated into package offerings and must be used as a package – individual components cannot be used independently of the full package offering.

- **our Travel Offers are generally non-refundable;** in order to provide great value Travel Offers, we work with a variety of Travel Suppliers to find the best deals – this often means the Travel Suppliers' offerings are non-refundable to ensure the best price. We recommend that you obtain travel insurance as soon as you make a booking with us.

To read more about our Cancellation and Refund Policy, please [click here](#).

General Terms and Conditions

By placing your booking with us, you acknowledge and agree to our [Terms & Conditions](#), [Privacy Policy](#) and [Cancellation Policy](#).

Offer Essentials

This Travel Offer is valid for travel on selected dates until the 13th February 2026 .

This Travel Offer is priced per person based on a twin share.

Departure Dates & Surcharges

See checkout for live dates and availability.

Single Traveller Supplement

For solo travellers, a mandatory single supplement applies.

Itinerary 1

Oceanview Stateroom: \$12,500
Balcony Stateroom: \$13,500

Itinerary 2

Oceanview Stateroom: \$14,000
Balcony Stateroom: \$15,000

Itinerary 3

Oceanview Stateroom: \$14,000
Balcony Stateroom: \$15,000

Please note: Accommodation for single customers who are travelling on a tour or cruise package may be in a single room, depending on availability.

Child Policy

- No child discounts are offered. The full price applies to all children travelling with their parents.
- Valid for children 8 years old and over.

Please note: Children must be accompanied by a responsible adult 21 years old and over to travel. No unaccompanied minors are allowed.

Flights

Departure Cities

Sydney, Melbourne, *Brisbane, *Adelaide, *Perth, Auckland

Departure City Surcharges

Brisbane: \$100 per person
Adelaide: \$100 per person
Perth: \$400 per person

International Flight(s)

Full-Service Airline(s)

- Cabin Class: Economy Class

Please note: We cannot accommodate one-way flights. Travellers must take all included flights within the package, and any flights intentionally forfeited will result in later flights being subject to cancellation.

Domestic Charter Flight(s)

- Cabin Class: Economy Class

Important Information

- Route: Buenos Aires to Ushuaia, Argentina

Domestic Flight Information

Baggage allowance per person
1 x 20kg of checked baggage
1 x 7kg of carry on baggage

Preferred Airline Surcharge

- Not available

Arrive Early and Stay Behind Options

Arrive Early

Buenos Aires, Argentina - From \$300 per person, subject to availability.

Stay Behind

Buenos Aires, Argentina - From \$300 per person, subject to availability.

Please note:

- This fee does not include extra nights' accommodation, meals or airport transfers.
- Flight booking changes or cancellations after air tickets have been issued are not guaranteed and may incur additional fees and fare difference, subject to the airline cancellation and change policies.
- Flight changes are subject to availability at the time of booking.
- A high-season Arrive Early or Stay Behind can be purchased for an additional charge, subject to availability. For pricing, please refer to the cart.
- You can arrive early, up to 60 days before your package's start date, and/or stay behind until 60 days after your package's end date. Should you wish to arrive earlier or stay behind for more than 60 days, please contact us to request availability. Additional costs may apply.
- High season surcharges apply to flights departing between the below date ranges:
- 15th September 2025 - 12th October 2025
- 1st December 2025 - 19th December 2025
- 20th December 2025 - 4th January 2026
- 5th January 2026 - 31st January 2026
- 3rd April 2026 - 20th April 2026

- 26th June 2026 - 17th July 2026
- 18th September 2026 - 9th October 2026
- 12th December 2026 - 18th December 2026
- 19th December 2026 - 3rd January 2027
- 4th January 2027 - 26th January 2027

Stopover Packages

* Santiago, Chile

Includes:

- 2, 3 or 5 nights in 4-star accommodation
- Daily breakfast
- Return airport transfers

For pricing, please refer to the payment cart at checkout.

Please note:

- When a pre and post-tour stopover is chosen, the same stopover location must be chosen each way, due to the airline used.
- When selecting an Arrive Early or Stay Behind in conjunction with a Stopover Package, the stopover will take place after the departure date you select for your Arrive Early or Stay Behind.
- Stopover packages are subject to availability.
- In the event that a purchased stopover package and a purchased preferred airline upgrade are not compatible, you will have the option to receive a refund for the preferred airline upgrade or be offered an alternative stopover city option, e.g if you choose to fly with Singapore Airlines you cannot stopover in Dubai.
- Blackout dates apply to flights departing between the below date ranges:
- 2025

Christmas and New Years Eve - 22 December 2025 to 2 January 2026 2026

Christmas and New Years Eve - 18 December 2026 to 3 January 2027

Flight Class Upgrades

Business Class: For pricing, please refer to the payment cart at checkout.

Please note:

- Flight upgrades are subject to availability and pricing changes (if we cannot fulfil your request, the upgrade cost will be refunded).
- On any upgrade purchase, short-haul flights and domestic flight sectors are not guaranteed, subject to aircraft configuration.

Outbound Flights

Please note: Due to flight scheduling and availability, some departures may occur on Day 0. Affected customers must be available to depart the day before. Flight times will be indicated on your final documents, issued 4-6 weeks before departure.

Missed Flights

If you fail to arrive for your outbound flight, you risk all flight and land arrangements in your destination being automatically cancelled by the airlines and land operator, respectively. Additional fees may apply to reinstate these services. If you miss your flight for whatever reason, please contact us as soon as possible to make arrangements.

Cruise

Medical Disclaimer:

Travel to Antarctica is physically demanding, and our Travel Suppliers require all guests to obtain medical clearance before departure even if you don't intend to disembark in Antarctica. This involves completing a medical form and may require medical clearance from a doctor, which could incur additional costs. Any guests who fail to provide the necessary medical documentation will be denied boarding..

Swan Hellenic's SH Minerva:

The SH Minerva, launched in 2021, is the first of Swan Hellenic's new-generation expedition ships. This 10,600 GT vessel is designed for cultural expedition cruising, offering an intimate and luxurious experience for up to 152 guests across 76 staterooms. With a PC5 ice-strengthened hull and advanced stabilisation systems, SH Minerva is purpose-built for exploring

Important Information

remote polar regions and off-the-beaten-path destinations.

Onboard, guests can indulge in a variety of dining options. The main venue, The Swan Restaurant, offers international and regional cuisine focused on quality, creativity, and flavours, with an open seating policy allowing guests to dine at their leisure. Additionally, the Club Lounge provides a relaxed atmosphere for lighter fare and beverages, while the Pool Bar & Grill offers al fresco dining with stunning views.

Accommodations on SH Minerva are thoughtfully designed, featuring Scandinavian-inspired interiors that blend elegance with comfort. All 76 staterooms are double-occupancy, with most offering private balconies. Guests can expect modern amenities, including en-suite bathrooms, ample storage, and seating areas, ensuring a restful retreat after a day of exploration.

The ship's facilities are tailored to enhance the expedition experience. Guests can unwind in the panoramic sauna, stay active in the well-equipped gym, or relax in the spa (charges apply for spa treatments). The heated outdoor pool and adjacent bar provide a perfect spot for leisure while taking in the surrounding landscapes. For enrichment, SH Minerva offers a well-stocked library and lecture theatre, hosting expert-led talks and briefings that delve into the regions visited.

Entertainment on SH Minerva is designed to complement the expeditionary nature of the voyages. Evenings may include informative lectures, documentary screenings, or live music in the lounge, fostering a sense of community among guests. The ship's small size allows for a more personalised experience, with a high crew-to-guest ratio ensuring attentive service throughout the journey.

In summary, SH Minerva combines modern luxury with expedition cruising, offering guests an immersive and comfortable way to explore some of the world's most remote and captivating destinations.

Onboard currency:

USD\$

Cabins/Staterooms:

Oceanview Staterooms:

19m² - 20m²

Light, bright and crafted from natural materials, Oceanview staterooms feature 2 single beds in a bedroom, living room and a luxurious ensuite bathroom. All feature panoramic sea views, plush couches, premium pocket-sprung mattresses, ensuite bathrooms with glass-enclosed rain showers, and Egyptian cotton towels, bathrobes, and sheets. A pillow menu offers customised head and neck comfort during rest. At the same time, a large flat-screen TV, an espresso machine with Illy premium coffee, tea-making facilities with the finest Kusmi teas, and a minibar with refreshments enhance relaxation at any time. In-room dining is, of course, available at all hours.

Balcony Staterooms:

25m², including the balcony Staterooms feature 2 single beds in a bedroom, living room, luxurious bathroom and your own 5m² balcony. All feature panoramic sea views, plush couches, premium pocket-sprung mattresses, ensuite bathrooms with glass-enclosed rain showers, and Egyptian cotton towels, bathrobes, and sheets. A pillow menu offers customised head and neck comfort during rest. At the same time, a large flat-screen TV, an espresso machine with Illy premium coffee, tea-making facilities with the finest Kusmi teas, and a minibar with refreshments enhance relaxation at any time. In-room dining is, of course, available at all hours.

Please note:

- *All cabins are subject to availability; some cabins may have restricted views.*
- *Cruise cabins are booked on a guaranteed basis and are assigned by the cruise line prior to departure.*

PACKING LIST

As Antarctica is one of the most remote, rarely visited, parts of the world, knowing

what to pack for your voyage isn't always easy. So, in case you're unsure what clothes to pack for a cruise to Antarctica, below is a simple cruise outfit planner.

Plan ahead

It's best to pack thoughtfully for Antarctica's climate. Unless you travel there frequently, there's no reason you'd know what clothes to bring on a cruise to Antarctica. Everyone experiences the cold (and warmth) differently, but it pays to bear in mind daily temperatures in the Antarctic Peninsula can range from well below freezing to the upper 40°F/4°C. Plus, windchill can make things feel much colder, especially as you'll be spending a lot of your time outdoors in places that are subject to strong winds.

Stay warm

When you're thinking about what clothes to take on a cruise, it's worth remembering that the outside temperature in Antarctica can feel much colder than the reading on a thermometer. So it's recommended you wrap up extra warm. Layering is a great way to do this. Wearing several lightweight, loose-fitting layers is better than opting for one heavier layer. This is because the different layers allow for pockets of air between each item of clothing, which provides extra insulation, and it means you can remove or add layers when your body temperature changes.

Choosing clothes

A lot of the action on an expedition cruise happens outside, so dress codes are very relaxed on these voyages. Pack clothes that are comfortable and easy to wash. And it pays to consider how you're going to pack everything. For instance, do you know how to pack a cocktail dress in a suitcase? Is a cocktail dress something you'll definitely need? Some guests find it helpful to choose their clothes, then go back and edit their choices after an hour or so.

What to pack

For the polar regions you'll need casual trousers, jeans, long-sleeved t-shirts and a

Important Information

thin jumper or bodywarmer. You'll be cosy and comfortable when you're inside the ship, but it's always good to have warm clothes handy for when something out on deck takes your interest. Waterproof trousers, to wear over your pants or thermal underwear, are essential for Zodiac trips and land excursions. You'll need to bring a warm, windproof hat that covers your head and ears, and a collar scarf to protect your neck and chin from the elements. Polarised sunglasses will help reduce the glare from the snow and ice, protect your eyes from UV rays, and help you see the details of the Antarctic scenery better. It's also worth packing mittens, ski gloves and insulated glove liners to keep your hands warm and dry. Also, you might want to pack swimming and fitness gear if you plan to visit the spa, pool or fitness centre. Evenings are informal, but maybe pack a couple of casual shirts, skirts or dresses for dinner, and something stylish for special occasions, such as cocktails with the Captain. When it comes to footwear, keep it light and easy to pack. Swan Hellenic will provide a pair of rubber muck boots for Zodiac excursions and onshore landings, so a pair of lightweight trainers will be fine. Steer clear of bringing high-heels, especially stilettos, as the seas can get rough at times, and you'll need to keep your balance.

Expedition extras

When you travel to the polar regions, a Swan Hellenic expedition parka will be waiting for you in your stateroom on the first day of the cruise. This is yours to keep after your voyage. Your parka is water and windproof, and features an adjustable hood with fleece lining for added warmth, a visor for optimal visibility in all conditions, and a high collar and elongated cuffs to give you extra protection. You'll also receive a branded waterproof backpack, which will be useful for protecting your camera and any other electronic gear that you want to bring for shore landings.

Cruise Arrival and Departure Times:

Please keep in mind that the provided cruise arrival and departure times are an approximate and will be finalised upon receipt of your cruise tickets.

Accommodation

Accommodation Used:

5-star Properties (Self-Rated)

Buenos Aires, Argentina: Sofitel or/and Palladio Hotel Buenos Aires

Please note: Accommodation/rooms offered are based on a lead-in room type and are subject to availability based on seasonality. In the instance a property is not available, a similar standard of accommodation will be provided. Properties will be confirmed and included in your travel pack, which you will receive 4-6 weeks before travel.

Extra Nights

Not available.

Please note: If you are interested in booking additional nights of accommodation pre or post-tour, please wait until you receive your travel documentation approximately 4-6 weeks before departure for the confirmed list of hotels. If booking your own additional accommodation directly with the hotel, please be aware that you may be required to change rooms at the start/end of your tour.

Maximum Room Capacity

2 people.

Triple Share

Not available.

Bedding Configuration

Twin or double (subject to availability).

Optional Tours/activities

- Some tours or shore excursions require minimum numbers to operate.
- Shore excursions can be booked/reserved directly with the cruise line before travel (subject to availability)
- Shore excursions can also be booked whilst onboard (subject to availability).

- Shore excursion programmes and itineraries may vary depending on local conditions and/or any unforeseen events concerning the timing on the day of the tour. Some excursions are very popular, and therefore availability cannot always be guaranteed, it is advisable to book in advance to avoid disappointment.

Exclusions

- Visa fees and requirements
- Domestic transfers and flights not stated in the deal offer
- Meals/beverages not stated in the deal offer
- Optional gratuities/tipping
- Optional activities/tours
- Personal expenses
- Travel insurance
- Any costs associated with an interruption to your tour as a result of an airline schedule change or cancellation
- Mandatory city tax

Gratuities / Tipping

Please note: Tipping for services provided is always a matter of personal discretion; however, please be aware that many locals consider tipping part of their normal remuneration, and they may approach you for payment; there's no need to be intimidated by the request.

Cruise

Gratuities (tips) are included for the cruise staff's services throughout this tour's cruise component.

Other Important Information

CLIMATE & AVERAGE TEMPERATURES

Buenos Aires

Buenos Aires experiences its summer season from November to February, characterized by warm to hot and humid conditions with frequent thunderstorms. In November, as spring transitions to summer, average temperatures range from around 16 C to 25 C, becoming progressively warmer towards the end of the month. December brings a noticeable increase in heat, with average

Important Information

temperatures around 23C, and highs often reaching 27–29C and lows around 20 C. January is the hottest month, with average temperatures hovering around 25 C, and daily highs frequently reaching 29 C and lows around 19–20 C. February maintains similar warm temperatures, with averages around 22 C and highs generally between 25C and 31 C, and lows between 16 C and 24 C, though temperatures tend to slightly decline towards the end of the month. Throughout this period, humidity levels are generally high, and rainfall, often in the form of afternoon thunderstorms, is common.

Antarctica

From November to February, Antarctica experiences its austral summer, offering the mildest temperatures and extended daylight, making it the primary window for cruises. November, the start of the season, sees temperatures on the Antarctic Peninsula averaging around –1 C to –4 C, with abundant snow and ice. December brings a rise in temperatures, often reaching 1C, with diminishing sea ice allowing for greater accessibility. January is typically the warmest month, with averages around 0C to 1C and nearly 24 hours of daylight, while February maintains similar mild temperatures of 0 C to –3 C, with excellent opportunities for whale watching as the ice recedes further. While these temperatures are for the more frequently visited Peninsula, the continent's interior remains significantly colder, and the weather throughout this period is always unpredictable, with rapid shifts in conditions common.

Weather

We always suggest referring to an online source for the most up-to-date weather information for your destination/s.

FLIGHTS

Seat Selection & Frequent Flyer Points:

We do not arrange seat selection. It is essential to highlight that some airlines do not allow pre-selected seats. We strongly suggest you contact the airline directly

with seating allocation requirements and/or arrive at the airport earlier to arrange your seating. While we do not add frequent flyer member details to bookings, you can do this directly with the airline once you have your flight information.

Passport Validity:

Customers must provide valid passport details either at the time of purchase or no later than 90 days before the departure date. Failure to do so may result in the cancellation of the booking. Customers will be responsible for any costs and fees incurred in this instance.

CRUISE

Embarkation / Disembarkation:

- Begins approximately 2 hours after docking.
- Due to security reasons, all guests must be on board 2 hours before sailing.
- Itineraries are subject to change at any time without notice.
- Check your specific sailing for exact departure and arrival times. All times are local to the port.

Please note: Strict Covid-19 terms may also apply regarding proof of insurance covering Covid-19 and/or vaccination. Please refer to the cruise lines' terms and conditions for further information before boarding.

Cruise Loyalty Discounts:

Please note: Travellers must contact the cruise line directly upon receiving their travel documents in order to request any membership benefits they may be entitled to.

Meals:

Please note: We will do our best to meet your requests/requirements; however, we cannot guarantee that we will always be able to.

Luggage:

You will be responsible for all your personal belongings whilst on tour. You must carry your own luggage from the vehicle to the hotel room and back to the vehicle. The driver will assist with the loading and unloading of bags from the

vehicle.

OTHER

Mobility:

If you require wheelchair access please contact our friendly sales and service team to inquire on your behalf.

Fitness Level Required:

Adventure (and spontaneity) create some of the best travel memories. Bear in mind that your home schedules and timings may not be adhered to on tour - it's all part of the fun!

A Moderate level of fitness will be required.

Expect a moderate pace of touring with a focus on guided tours that may include full days with extended activities and guided nature walks. You will require a general level of fitness for unassisted navigation of stairs and inclines, longer distances with possible periods of standing when visiting sites, walking on sloping, uneven ground or elevations. You will be responsible for your own luggage and have the ability to board all modes of transport without assistance. Please note: Many areas may be inaccessible to wheelchairs or mobility scooters, where the unassisted use of personal walking sticks and other aids may be required. Although some assistance may be available, every traveller should be self-reliant during all aspects of their travel.

Please note: It is expected that every traveller must be self-reliant and able to undertake all aspects of their own travel. Please speak to your booking agent about your personal circumstances and any assistance requirements to ensure this tour is right for you.

Please note: If you have any concerns, please consult your healthcare provider prior to purchase/travel.

Yellow Fever:

A valid international certificate of vaccination against Yellow Fever is required in many countries. You may need to present this on arrival at the airport or

Important Information

border crossing. Some countries will refuse entry if you are unable to present your certificate. It's also common for your home country to request a Yellow Fever certificate upon arrival.

You must check with your doctor well before leaving home about the Yellow Fever requirements for the countries you'll be visiting.

Sightseeing:

Please note: If entry to a site is affected by changes in operating hours or public holiday closures, your itinerary, where possible, may be adjusted, or a similar activity will be offered in its place (subject to availability).

Shopping:

Shopping overseas can be a daunting and confusing experience, especially when there is a language barrier. Please be very cautious when foreign currencies and prices are involved. If paying by credit card, please pay close attention to the amount you are being charged and keep all your receipts.

Do not make any purchases you are not comfortable with or feel pressured into. If you are uncertain or need assistance with the language barrier, please seek assistance from your Tour Guide/Leader. Please refer to our [Terms and Conditions](#) regarding shopping for further information.

Visas

Argentina

Australian passport holders are visa exempt for a stay of up to 3 months. Please Note: Effective immediately, all international travellers to Argentina must hold valid travel insurance with medical coverage.

This insurance may be requested and verified upon arrival in the country. Argentina's public healthcare system will no longer provide free medical services to foreign nationals. It is therefore essential that you obtain appropriate insurance before your departure.

Chile

Australian passport holders visiting Chile

for tourism purposes or transit between 8 to 72 hours must apply for a single or multiple tourist visas. Visas must be lodged through the SAC CIUDADANOS portal only <https://tramites.minrel.gov.cl/>

The application process can be lengthy, so allow yourself enough time before your planned travel. When travelling to Chile, you'll get a tourist card (paper) on arrival. You must keep the card and present it to immigration officials when departing Chile. You can request a new copy online if your tourist card is lost or stolen. Entry and exit conditions can change at short notice. Contact the Embassy or Consulate of Chile for details about visas, currency, customs and quarantine rules.

Important:

- *Please start arranging your visa three weeks before departure to account for any delays due to consulate operating hours.*
- *Visa rules are subject to change. Please check with the nearest embassy, consulate or immigration department of the destination/s you are visiting once you receive your travel documentation to ensure you have the most up to date information.*
- *It is your responsibility to be travel-ready and ensure that you are aware and comply with any destination or travel requirements, including the validity of all required travel documents.*
- *Passengers who are not Australian citizens must also check with the respective consulate or visa agency to determine what their visa requirements are and what personal identification is required.*
- *It is also important to note that some areas of employment, such as journalism, government authorities and charity organisations, may have additional restrictions in applying for visas. This may, in turn, affect the type of application required.*

Travel Insurance

Embarking on your next trip is exciting, and while you hope the unexpected does not happen, it is best to be prepared. We strongly recommend you take out travel

insurance when making your booking. Whether it's a potential medical emergency, a flight cancellation, a delayed suitcase, or an unforeseen event, it's important to ensure you're adequately protected. For more information or advice visit <https://www.tripadeal.com.au/travel-insurance>

Schedule Of Fees

Voluntary Changes

This includes booking changes requested by you, including but not limited to those changes requiring an airline ticket or a Purchase Confirmation reissue.

- Changes - \$100 per booking and any additional charges applied by the airline/ cruise company/accommodation/other travel providers.

Name Changes Due To Passenger Error

- If the incorrect name has been provided, charges of \$100 per booking and any additional charges applied by the airline/ cruise company/accommodation/other travel providers.

Supplier Fees

In the event the tour package you have purchased is unable to proceed, and/or a Travel Supplier is unable to fulfil the tour due to external circumstances (Limitation of Liability e.g. a Force Majeure event), there may be a fee or amount of money that is withheld by our Suppliers and is unrecoverable. This may be due to non-refundable airline tickets, cancellation penalties with cruise cabins or unrecoverable payments with our land/accommodation partners. If refunds are not available from Suppliers, we will endeavour to obtain a travel credit on the best terms available and communicate these outcomes to you. In the event we are unable to obtain a refund or travel service credit, or part thereof, this cost is passed on to the customer as a Supplier Fee.