



All Inclusive Sydney to Singapore Cruise

AUSTRALIA ● SINGAPORE

The Offer

Embark on a bucket-list 16-day cruise aboard the Celebrity Solstice, followed by a two-night stay in vibrant Singapore. This incredible journey promises a blend of tropical paradise, laid-back coastal charm and modern city life.

Your adventure begins in Sydney, where you'll set sail on the magnificent Celebrity Solstice. Prepare to be pampered with a Classic Drink Package, all your meals and included gratuities ensuring a truly relaxing experience. The first few days at sea allow you to explore the ship's elegant venues, from world-class dining to serene pools.

The coastline of Queensland beckons with three spectacular stops accessed by tender boat. First, the tropical haven of Airlie Beach, gateway to the idyllic Whitsundays. Next, explore Cairns, the launching pad for adventures to the Great Barrier Reef and Daintree Rainforest. Finally, discover the sun-drenched slice of paradise that is Port Douglas, where the rainforest meets the reef.

Continue your voyage with a call to Darwin the beating heart of the Northern Territory. Here, a tropical outdoor lifestyle meets fascinating wartime history and a melting pot of cultures, offering a taste of Australia that's as bold as it is unique.

After several days of blissful cruising, you'll arrive in Singapore, a city-state of dazzling cultural contrasts, an iconic skyline, featuring the Marina Bay Sands and Gardens by the Bay. With two nights to explore at your leisure, you can indulge in world-class retail therapy, marvel at billion-dollar architecture and savour the sizzling, spicy delights of its diverse culinary scene.

This incredible adventure includes a one-way international full-service flight, a 13-night Sydney to Singapore cruise, 2 nights of 4-star accommodation in Singapore, 38 meals and more.

Want more? Stay Behind in Singapore or choose a cabin upgrade.

Offer available for a limited time or until sold out. TRIP A DEAL PTY LTD: 50149240433

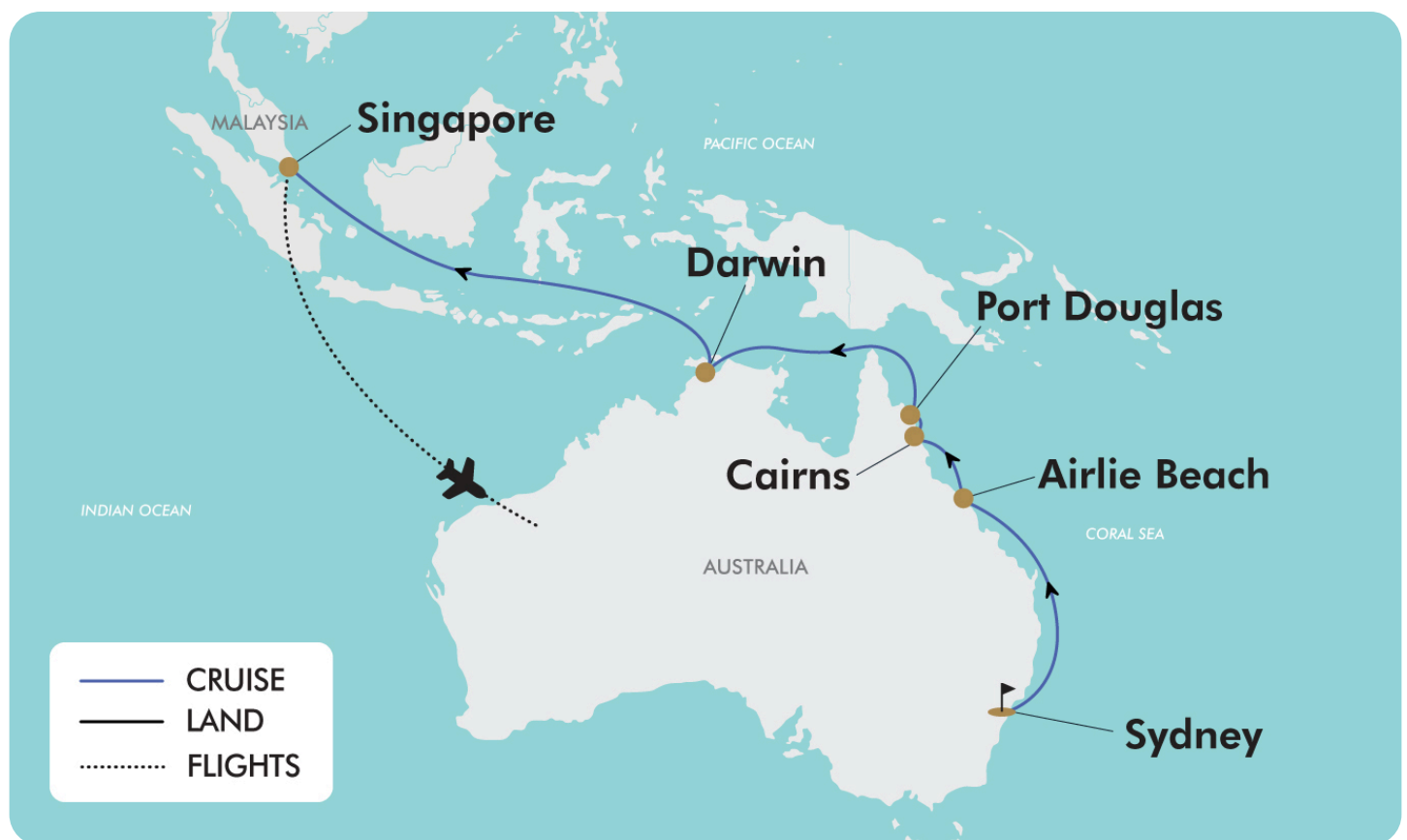
Updated: 21 Aug 2025 15:47:02

Have a question about this deal? We're here to help.
Call our friendly team on 1300 158 912



16-DAY CRUISE & TOUR PACKAGE | ALL INCLUSIVE SYDNEY TO SINGAPORE CRUISE

The Map



Offer available for a limited time or until sold out. TRIP A DEAL PTY LTD: 50149240433

Updated: 21 Aug 2025 15:47:02

Have a question about this deal? We're here to help.
Call our friendly team on 1300 158 912



16-DAY CRUISE & TOUR PACKAGE | ALL INCLUSIVE SYDNEY TO SINGAPORE CRUISE

The Itinerary

Day 1 Sydney, Australia - Board 13-Night Celebrity Solstice to Singapore

Departs: 16:30

Today, make your own way to the Sydney cruise port to embark on a bucket list 14-day Sydney to Singapore cruise aboard 'Celebrity Solstice' the lead ship of Celebrity Cruises, Solstice class. Discover a world of luxury and sophistication onboard with elegant decor and world-class amenities. Relax even further with included gratuities for cruise staff, wifi access, all meals* while cruising and receive a Classic Drink Package.

*Please note: speciality restaurants onboard at an additional cost.

Overnight: Celebrity Cruises Celebrity Solstice

Meals included: Dinner

Day 2 Cruising

While at sea, take the time to recharge before the next adventure. Perhaps you would like to lounge by the pool, be spoiled at the spa*, taste the delicacies or explore the venues onboard, until we arrive at the next amazing destination. 'Celebrity Solstice' is one of Celebrity Cruises most decorated ships, with elegant designs everywhere you turn. The onboard dining experience takes you to a whole new level and the luxurious staterooms are sure to bring the comfort of your home, out to sea. Life on this vessel is nothing less than exceptional.

*Please note: Spa services available at an additional cost

Overnight: Celebrity Cruises Celebrity Solstice

Meals included: Breakfast; Lunch; Dinner

Day 3 Cruising

Overnight: Celebrity Cruises 'Celebrity Solstice'

Meals included: Breakfast; Lunch; Dinner

Day 4 Airlie Beach, Queensland

Tendered: 7:00 - 17:00

This morning, you'll arrive at tropical Airlie Beach. With waters that radiate turquoise intensity, sands as white as snow and forests the colour of emeralds, the 74 islands that make up the Whitsundays are the definition of paradise. Sandwiched between the coast of Queensland and the Great Barrier Reef, the Whitsunday beaches rank among the best in the world. Please note: This port is accessed by tender boats. Boarding and disembarking tender boats may involve steps and uneven surfaces. While cruise lines strive to provide ease of access, accessibility options can vary at different tender ports. Passengers with mobility concerns are encouraged to inquire about specific arrangements and consider their individual needs when participating in tendering activities.

Overnight: Celebrity Cruises Celebrity Solstice

Meals included: Breakfast; Lunch; Dinner



16-DAY CRUISE & TOUR PACKAGE | ALL INCLUSIVE SYDNEY TO SINGAPORE CRUISE

The Itinerary

Day 5 Cairns (Yorkey's Knob), Queensland

Tendered: 9:00-21:00

The gateway to Australia's Great Barrier Reef and the tropical north of the country, Cairns sits on the east coast of the Cape York Peninsula in northern Queensland. This laid-back city is popular with travellers who depart from here for days of sailing, diving, snorkeling and trekking through nearby parks—a celebrated launching pad especially for those who want to explore the reef, the Daintree Rainforest and other attractions of this part of Queensland. And what better place to start one's adventure? The residents of Cairns are welcoming, the beach life fantastic and the climate consistently warm.

Please note: This port is accessed by tender boats. Boarding and disembarking tender boats may involve steps and uneven surfaces. While cruise lines strive to provide ease of access, accessibility options can vary at different tender ports. Passengers with mobility concerns are encouraged to inquire about specific arrangements and consider their individual needs when participating in tendering activities.

Overnight: Celebrity Cruises 'Celebrity Solstice'
Meals included: Breakfast; Lunch; Dinner

Day 6 Port Douglas, Queensland

Tendered: 7:00 - 17:00

This morning, your ship will anchor off the laid-back tropical haven of Port Douglas. Fringed by palm-lined shores and set between two natural wonders – the Great Barrier Reef and the Daintree Rainforest – this charming coastal town is a gateway to some of Australia's most breathtaking landscapes. Whether you're exploring vibrant coral gardens beneath turquoise waters or wandering through ancient, emerald-green rainforest, Port Douglas is a sun-drenched slice of paradise where the reef meets the rainforest in spectacular style.

Please note: This port is accessed by tender boats.

Boarding and disembarking tender boats may involve steps and uneven surfaces. While cruise lines strive to provide ease of access, accessibility options can vary at different tender ports. Passengers with mobility concerns are encouraged to inquire about specific arrangements and consider their individual needs when participating in tendering activities.

Overnight: Celebrity Cruises 'Celebrity Solstice'
Meals included: Breakfast; Lunch; Dinner

Day 7 Cruising

Overnight: Celebrity Cruises 'Celebrity Solstice'
Meals included: Breakfast; Lunch; Dinner

Day 8 Cruising



16-DAY CRUISE & TOUR PACKAGE | ALL INCLUSIVE SYDNEY TO SINGAPORE CRUISE

The Itinerary

Overnight: Celebrity Cruises 'Celebrity Solstice'
Meals included: Breakfast; Lunch; Dinner

Day 9 Darwin, Northern Territory Docked: 9:00 - 19:00

Surrounded on three sides by the turquoise Timor Sea, the Northern Territory's capital is closer in both distance and temperament to Southeast Asia than it is to most of Australia's major cities. The lifestyle here is tropical, which means a relaxed atmosphere, balmy weather, fabulous fusion food and vibrant outdoor markets.

This cosmopolitan city has around 140,000 residents, including some 50 nationalities. After heavy bombing in World War II and a disastrous cyclone in 1974, Darwin has been largely rebuilt, and it's modern and well planned. In the downtown area you'll find everything from great shopping to a crocodile park. You can trace the region's dramatic history at innovative museums and gallery-hops to see indigenous art. After your sightseeing stroll, have a late lunch at one of the many excellent restaurants. The food options range from authentic Malaysian dishes like laksa, a spicy noodle soup, to a plethora of fresh seafood—mud crab, barramundi and more.

You may find it hard to leave this laid-back lifestyle, but there's much more to see close by. Darwin is the gateway to two famous national parks, Kakadu and Litchfield, as well as the spectacular Aboriginal-owned Tiwi Islands. Make sure you take the time to 'go bush,' as they say in Australia—that is, get out of town and relax. There's no better place to do it than in this glorious part of the country.

Overnight: Celebrity Cruises 'Celebrity Solstice'
Meals included: Breakfast; Lunch; Dinner

Day 10 Cruising

Overnight: Celebrity Cruises 'Celebrity Solstice'
Meals included: Breakfast; Lunch; Dinner

Day 11 Cruising

Overnight: Celebrity Cruises 'Celebrity Solstice'
Meals included: Breakfast; Lunch; Dinner

Day 12 Cruising

Overnight: Celebrity Cruises 'Celebrity Solstice'
Meals included: Breakfast; Lunch; Dinner

Day 13 Cruising

Overnight: Celebrity Cruises 'Celebrity Solstice'
Meals included: Breakfast; Lunch; Dinner

Offer available for a limited time or until sold out. TRIP A DEAL PTY LTD: 50149240433

Updated: 21 Aug 2025 15:47:02

Have a question about this deal? We're here to help.
Call our friendly team on 1300 158 912





16-DAY CRUISE & TOUR PACKAGE | ALL INCLUSIVE SYDNEY TO SINGAPORE CRUISE

The Itinerary

Day 14 Disembark Cruise - Singapore

Disembark: 7:00

Among one of the world's busiest ports and prosperous cities, Singapore is full of culture, history and excitement. Here you can enjoy a tropical climate and multicultural population. Upon arrival in Singapore, please make your own way to the hotel where you will stay for the next 2 evenings.

Overnight: Copthorne King's Hotel Singapore or similar

Meals included: Breakfast

Day 15 Singapore

Enjoy the day at leisure to discover the city of Singapore. It's a city of contrasts with billion-dollar architecture looming over traditional temples and luxury apartments looking over ancient rainforests. With a diverse multicultural population mixing Indian, Chinese and Malay; you'll find sizzling, spicy and delicious food everywhere. All you need to do is follow your nose and you're sure to find something that tickles the taste buds. If you'd like to indulge in retail therapy, you can get lost in world-class malls or trawl local shops for traditional delights.

Please note: The activities mentioned above are suggestions and are not included. Additional charges may apply.

Overnight: Copthorne King's Hotel Singapore or similar

Meals included: None

Day 16 Singapore - Australia (or New Zealand)

Today, at the appropriate time, please make your own way to the airport for your flight back to Australia (or New Zealand).

Please note that due to flight schedules, your arrival in Australia may be on Day 17 of the itinerary. Final flight times will be confirmed in your Travel Documentation, which will be sent to you 4-6 weeks prior to departure.

Once arrived, please make your own onward travel arrangements.

Meals included: None



16-DAY CRUISE & TOUR PACKAGE | ALL INCLUSIVE SYDNEY TO SINGAPORE CRUISE

Tour Inclusions

HIGHLIGHTS

- Embark on a 13-night voyage aboard the elegant Celebrity Solstice
- Enjoy included dining, a classic drinks package, Wi-Fi access and prepaid gratuities
- Journey along Australia's stunning East Coast before sailing to Singapore
- Soak up the sunshine in the relaxed coastal haven of Airlie Beach
- Discover laid-back Cairns, the gateway to the Great Barrier Reef
- Stroll the palm-fringed esplanade of charming Port Douglas
- Explore Darwin's rich culture on Australia's remote northern coast
- Witness Singapore's dynamic blend of past, present and future
- Gaze at the futuristic Marina Bay Sands and skyline of Singapore
- Enjoy free time to explore cosmopolitan Singapore at your own pace

FLIGHTS

- One-way international full-service flight (economy class), departure city surcharges may apply

CRUISE

- 13-night Sydney to Singapore cruise with Celebrity Cruises
- Cruise aboard the sophisticated Celebrity Solstice
- Indulge with included dining, a classic drinks package, Wi-Fi access and prepaid gratuities

ACCOMMODATION

- 2 nights of 4-star accommodation in Singapore

DINING

- Enjoy 38 meals, including all meals while cruising

ESSENTIALS

- Airline taxes and port charges

Important Information

**Please note: All information provided in this brochure is subject to both change and availability. Prior to purchase please check the current deal for up-to-date information. If you have already purchased this deal, the terms and conditions on your Purchase Confirmation apply and take precedence over the information in this brochure.*

Booking Information

After purchase, you will receive a receipt and a Purchase Confirmation, directing you to an online Passenger Information Form. You must complete the Passenger Information Form within 72 hours of purchase.

Any special requests, preferences and optional extras MUST be clearly stated in your Passenger Information Form. Any change requested after submitting your Passenger Information Form cannot be guaranteed, is strictly subject to availability and will incur surcharges as outlined in the Schedule of Fees below.

On purchasing this Travel Offer, you are bound by the [General Terms and Conditions](#) and the specific terms and conditions outlined in this Important Information.

Please note: All countries and territories have different entry requirements in relation to vaccinations, quarantine/isolation periods and travel restrictions. Due to the evolving nature, we would ask all of our customers to monitor, meet and adhere to the specific requirements of their intended destination(s) in the lead-up to and immediately before travel, as well as any requirements post-travel upon their return.

Our Policies

Cancellation and Refund Policy

By placing a booking with us, you acknowledge the following important information:

- **we act as your booking agent:** TripADeal is a booking services provider, and curates the Travel Offers available on our website. We act as your booking agent, and we receive payment for the Booking Services as part of the booking price, however, we do not provide any of the

Travel Services (flights, accommodation, tours or other products or services) included in your booking – the Travel Services are provided by a number of third party Travel Suppliers.

- **each booking is unique:** our Travel Offers are made up of a variety of different components and are, during the booking process, uniquely tailored to suit your requirements, for example, departure dates and ports, flight and room upgrades, tour inclusions, etc.
- **changes/modifications to your booking may not be possible:** once your booking has been made, changes or modifications may not be possible, and where possible, may incur a fee. It is important to ensure that the information you provide during the booking process is accurate and up to date, and that you read the Travel Offer carefully before placing your order.
- **Travel Offers are a package:** our Travel Offers have been curated into package offerings and must be used as a package – individual components cannot be used independently of the full package offering.
- **our Travel Offers are generally non-refundable:** in order to provide great value Travel Offers, we work with a variety of Travel Suppliers to find the best deals – this often means the Travel Suppliers' offerings are non-refundable to ensure the best price. We recommend that you obtain travel insurance as soon as you make a booking with us.

To read more about our Cancellation and Refund Policy, please click [here](#).

General Terms & Conditions

By placing your booking with us, you acknowledge and agree to our [Terms & Conditions](#), [Privacy Policy](#) and [Cancellation Policy](#).

Offer Essentials

This Travel Offer is valid for travel on selected dates until the 22nd November 2026

This Travel Offer is priced per person

based on a twin share.

Departure Dates & Surcharges

See checkout for live dates and availability.

Single Traveller Supplement

For solo travellers, a mandatory single supplement applies:

Inside: \$3,750

Ocean View: \$4,250

Veranda (Partial View): \$4,450

Veranda: \$4,500

Prime Veranda: \$4,550

Concierge Class: \$4,900

Aqua Class: \$5,500

Please note: Accommodation for single customers who are travelling on a tour or cruise package may be in a single room, depending on availability.

Child Policy

- No child discounts are offered. The full price applies to all children travelling with their parents.
- Valid for children of any age

Please note: Children must be accompanied by a responsible adult 18 years old and over to travel. No unaccompanied minors are allowed.

Flights

Departure Cities

Sydney - no flights provided, please make your own way to the starting point of the itinerary

Return Cities

Sydney, Melbourne, *Brisbane, *Adelaide, Perth, *Auckland

Return City Surcharges

Brisbane & Adelaide: \$50 per person

Auckland: \$680 per person

International Flight(s)

Full-Service Airline(s) Used

- Cabin Class: Economy Class

Preferred Airline Surcharge

- Cabin Class: Economy Class
- Singapore Airlines: \$105 per person

Important Information

- Qantas Airlines: \$475 per person

Please note:

- Preferred airlines are subject to availability. If we are unable to fulfil your request, the above extra cost will be refunded.
- On any upgrade purchase, short-haul flights and domestic flight sectors are not guaranteed.
- In the event that a purchased stopover package and a purchased preferred airline upgrade are not compatible, you will have the option to receive a refund for the preferred airline upgrade or be offered an alternative stopover city option, e.g if you choose to fly with Singapore Airlines you cannot stopover in Dubai.
- Preferred airline refers to the marketing carrier and could include codeshare partners.

Arrive Early and Stay Behind Options

Stay Behind

Singapore - From \$300 per person, subject to availability.

Please note:

- This fee does not include extra nights' accommodation, meals or airport transfers.
- Flight booking changes or cancellations after air tickets have been issued are not guaranteed and may incur additional fees and fare difference, subject to the airline cancellation and change policies.
- Flight changes are subject to availability at the time of booking.
- A high-season Arrive Early or Stay Behind can be purchased for an additional charge, subject to availability. For pricing, please refer to the cart.
- You can arrive early, up to 60 days before your package's start date, and/or stay behind until 60 days after your package's end date. Should you wish to arrive earlier or stay behind for more than 60 days, please contact us to request availability. Additional costs may apply.
- High season surcharges apply to flights departing between the below date ranges:
- 18th September 2026 - 9th October 2026

- 12th December 2026 - 18th December 2026

- 19th December 2026 - 3rd January 2027

- 4th January 2027 - 26th January 2027

Flight Class Upgrades

Business or Premium Economy Class: For pricing, please refer to the payment cart at checkout.

Please note:

- Flight upgrades are subject to availability and pricing changes (if we cannot fulfil your request, the upgrade cost will be refunded).
- On any upgrade purchase, short-haul flights and domestic flight sectors are not guaranteed.

Missed Flights

If you fail to arrive for your outbound flight, you risk all flight and land arrangements in your destination being automatically cancelled by the airlines and land operator, respectively. Additional fees may apply to reinstate these services. If you miss your flight for whatever reason, please contact us as soon as possible to make arrangements.

Cruise

Celebrity Cruises' Celebrity Solstice

Class: Solstice Class

Built: 2008

Refurbished: 2021

Decks: 16

Experience a vacation like no other aboard Celebrity Solstice. Relax and enjoy unforgettable spaces, world-class amenities, and all of the distinct features that make our cruises so extraordinary. Enjoy all of the award-winning onboard experiences as we make our way to incredible destinations. Our stylish accommodations include Concierge Class staterooms and spa-inspired AquaClass® with exclusive clean cuisine dining at Blu. The Retreat® experience includes private restaurant dining and 24/7 lounge. Enjoy dining options that include distinctive restaurants with menus crafted by our chef and the most awarded wine collection at sea. Play your favorite outdoor games,

catch a concert, or just take in some sun at The Lawn Club. Invigorate your senses and discover an amazing level of soothing spa treatments at The Spa. Relax, rest, and recharge aboard Celebrity Solstice and we'll take care of every detail, so all you have to do is enjoy your vacation. Celebrity Solstice is sailing with Starlink - the world's most advanced broadband satellite internet - to bring you high-speed connectivity for a better onboard experience.

Onboard Currency

\$ USD

Dining

- Complimentary breakfast, lunch, and dinner available in a variety of restaurants

Please note:

- All cabins are subject to availability; some cabins may have restricted views.
- Cruise cabins are booked on a guaranteed basis and are assigned by the cruise line prior to departure.

Accommodation

Accommodation Used

4-Star Properties (Self-Rated)

- Singapore: Copthorne King's Hotel Singapore or similar

Please note: Accommodation/rooms offered are based on a lead-in room type and are subject to availability based on seasonality. In the instance a property is not available, a similar standard of accommodation will be provided. Properties will be confirmed and included in your travel pack, which you will receive 4-6 weeks before travel.

Extra Nights

Not available.

Please note: If you are interested in booking additional nights of accommodation pre or post-tour, please wait until you receive your travel documentation approximately 4-6 weeks before departure for the confirmed list of hotels. If booking your own additional

Important Information

accommodation directly with the hotel, please be aware that you may be required to change rooms at the start/end of your tour.

Maximum Room Capacity

2 people.

Triple Share

Not available.

Bedding Configuration

Twin or double (subject to availability).

Optional Tours/activities

- Some shore excursions require minimum numbers to operate.
- Shore excursions can be booked/reserved directly with the cruise line before travel (subject to availability)
- Shore excursions can also be booked whilst onboard (subject to availability).
- Shore excursion programmes and itineraries may vary depending on local conditions and/or any unforeseen events concerning the timing on the day of the tour. Some excursions are very popular, and therefore availability cannot always be guaranteed, it is advisable to book in advance to avoid disappointment.

Exclusions

- Visa fees and requirements
- Domestic transfers and flights not stated in the deal offer
- Meals/beverages not stated in the deal offer
- Optional gratuities/tipping
- Optional activities/tours
- Personal expenses
- Travel insurance
- Any costs associated with an interruption to your tour as a result of an airline schedule change or cancellation
- Mandatory city tax

Gratuities / Tipping

Please note: Tipping for services provided is always a matter of personal discretion; however, please be aware that many locals consider tipping part of their normal remuneration, and they may approach you

for payment; there's no need to be intimidated by the request.

Cruise

Gratuities (tips) are included for the cruise staff's services throughout this tour's cruise component. Some optional purchases on board, such as spa services and specialty dining may incur additional service charges. If you have any questions regarding the gratuities on your cruise, please speak to the guest services staff onboard the ship.

Other Important Information

TOUR GUIDE VS. TOUR LEADER

Tour Guide:

Often locals with intimate knowledge of an area, its culture, and history. Their role entails providing commentary, routing the tour, and seeing that people have a good time. They are a licensed, qualified expert who supplies specific information on the history, art, architecture and culture of the city/village/attraction where they are guiding the tour. The guide meets the group at the required place and leaves it at the end of the tour; they do not travel with the group.

Tour Leader:

An experienced person tasked with ensuring the smooth operation of tours, as well as providing practical support to passengers throughout the whole trip. Their role primarily includes assisting with accommodation, transportation between locations, and communication with tour guides at each stop. A tour leader may provide general guidance around a city or village and offer information on the place visited on the bus. However, they are not required to have specific art, architecture, or historical knowledge. They are not allowed to provide a guided tour or commentary of a city/village/attraction once there and, if caught doing so, can be fined.

Please note: Tour leaders/guides are not a standard inclusion in all travel offers. Tour leaders/guides will only be made available

when required to enhance the experience of the destination featured.

CLIMATE & AVERAGE TEMPERATURES

Airlie Beach, Cairns & Port Douglas, Queensland

The Whitsunday Seasons are defined by wet, windy and dry seasons. The 'wet' season is from January-March, the most blustery months are March-May, and the driest months are August-October. The average daytime temperature dips to 23 degrees in July and 24 in June, however other months exceed 25 degrees. The average low in June and July overnight is 12 degrees and it is advised to bring warmer clothes for the evening.

Darwin, Northern Territory

The dry season, from May until October, is characterised by warm, dry sunny days and cool nights. Temperatures typically range from 21.6– 31.8°C, and humidity levels are much lower: around 60 – 65 per cent. Relatively cool weather arrives in May, and until July, nights are crisp with temperatures ranging from 17 - 23°C. It is also the perfect time to explore the more remote areas of the region that can be off-limits during the wet season.

Singapore

The best time to visit Singapore is from December to June, with temperatures in the range of an average high of 30.1°C and an average low of 23.3°C.

Weather

We always suggest referring to an online source for the most up-to-date weather information for your destination/s.

FLIGHTS

Seat Selection & Frequent Flyer Points:

We do not arrange seat selection. It is essential to highlight that some airlines do not allow pre-selected seats. We strongly suggest you contact the airline directly with seating allocation requirements and/or arrive at the airport earlier to arrange your seating. While we do not add

Important Information

frequent flyer member details to bookings, you can do this directly with the airline once you have your flight information.

Dietary Requests

Meal options and availability differ between airlines and routes therefore not all dietary requests can be accommodated. If your flight includes meals we will select the most suitable option available based on the dietary requirements you have specified. All meal requests are subject to airline approval and are not guaranteed, therefore we recommend preparing for your flight by bringing appropriate food for yourself, as required.

Passport Validity:

Customers must provide valid passport details either at the time of purchase or no later than 90 days before the departure date. Failure to do so may result in the cancellation of the booking. Customers will be responsible for any costs and fees incurred in this instance.

CRUISE

Embarkation / Disembarkation:

- Begins approximately 2 hours after docking.
- Due to security reasons, all guests must be on board 2 hours before sailing.
- Itineraries are subject to change at any time without notice.
- Check your specific sailing for exact departure and arrival times. All times are local to the port.

Please note: Strict Covid-19 terms may also apply regarding proof of insurance covering Covid-19 and/or vaccination. Please refer to the cruise lines' terms and conditions for further information before boarding.

Cruise Loyalty Discounts:

Please note: Travellers must contact the cruise line directly upon receiving their travel documents in order to request any membership benefits they may be entitled to.

Luggage:

You will be responsible for all your

personal belongings whilst on tour. You must carry your own luggage from the vehicle to the hotel room and back to the vehicle. The driver will assist with the uploading and unloading of bags from the vehicle.

OTHER

Mobility:

If you require wheelchair access please contact our friendly sales and service team to inquire on your behalf.

Fitness Level Required:

Adventure (and spontaneity) create some of the best travel memories. Bear in mind, your home schedules and timings might not be adhered to on tour - it's all part of the fun!

A Relaxed level of fitness will be required. Expect a comfortable pace as a cruise product. Please note that optional activities offered will have their own fitness requirements and should be researched prior to booking directly with the cruise line. This may include city tours, the ability to walk up and down small flights of stairs and gentle slopes. You will be responsible for your own luggage and have the ability to board all modes of transport without assistance. Please note: Some areas may be inaccessible to wheelchairs or mobility scooters, with personal walking sticks and other aids required should they be needed. Although some assistance may be available, every traveller should be self-reliant during all aspects of their travel.

Please note: It is expected that every traveller must be self-reliant and able to undertake all aspects of their own travel. Please speak to your booking agent about your personal circumstances and any assistance requirements to ensure this tour is right for you.

Please note: If you have any concerns, please consult your healthcare provider prior to purchase/travel.

Sightseeing:

Please note: If entry to a site is affected by changes in operating hours or public holiday closures, your itinerary, where possible, may be adjusted, or a similar activity will be offered in its place (subject to availability).

Shopping:

Shopping overseas can be a daunting and confusing experience, especially when there is a language barrier. Please be very cautious when foreign currencies and prices are involved. If paying by credit card, please pay close attention to the amount you are being charged and keep all your receipts.

Do not make any purchases you are not comfortable with or feel pressured into. If you are uncertain or need assistance with the language barrier, please seek assistance from your Tour Guide/Leader. Please refer to our [Terms and Conditions](#) regarding shopping for further information.

Visas

Singapore

Australian passport holders do not require a visa for stays of less than 90 days in Singapore.

Important:

- *Please start arranging your visa three weeks before departure to account for any delays due to consulate operating hours.*
- *Visa rules are subject to change. Please check with the nearest embassy, consulate or immigration department of the destination/s you are visiting once you receive your travel documentation to ensure you have the most up to date information.*
- *It is your responsibility to be travel-ready and ensure that you are aware and comply with any destination or travel requirements, including the validity of all required travel documents.*
- *Passengers who are not Australian citizens must also check with the respective consulate or visa agency to determine what their visa requirements are and what personal identification is required.*

Important Information

- *It is also important to note that some areas of employment, such as journalism, government authorities and charity organisations, may have additional restrictions in applying for visas. This may, in turn, affect the type of application required.*

Travel Insurance

Embarking on your next trip is exciting, and while you hope the unexpected does not happen, it is best to be prepared. We strongly recommend you take out travel insurance when making your booking. Whether it's a potential medical emergency, a flight cancellation, a delayed suitcase, or an unforeseen event, it's important to ensure you're adequately protected. For more information or advice visit <https://www.tripadeal.com.au/travel-insurance>

Schedule Of Fees

Voluntary Changes

This includes booking changes requested by you, including but not limited to those changes requiring an airline ticket or a Purchase Confirmation reissue.

- Changes - \$100 per booking and any additional charges applied by the airline/cruise company/accommodation/other travel providers.

Name Changes Due To Passenger Error

- If the incorrect name has been provided, charges of \$100 per booking and any additional charges applied by the airline/cruise company/accommodation/other travel providers.

Supplier Fees

In the event the tour package you have purchased is unable to proceed, and/or a Travel Supplier is unable to fulfil the tour due to external circumstances (Limitation of Liability e.g. a Force Majeure event), there may be a fee or amount of money that is withheld by our Suppliers and is unrecoverable. This may be due to non-refundable airline tickets, cancellation penalties with cruise cabins or unrecoverable payments with our land/

accommodation partners. If refunds are not available from Suppliers, we will endeavour to obtain a travel credit on the best terms available and communicate these outcomes to you. In the event we are unable to obtain a refund or travel service credit, or part thereof, this cost is passed on to the customer as a Supplier Fee.