



# Antarctica by Air, Land & Sea

ARGENTINA • ANTARCTICA

## The Offer

Journey to Earth's last true frontier, the rarely-visited eastern side of the Antarctic Peninsula. Picture yourself whisking above vast ice fields in a helicopter, enjoying off-ship Zodiac excursions and feeling the crunch of snow underfoot on unforgettable hikes.

Head to Argentina, where you'll touch down in Buenos Aires before catching a private charter flight to Ushuaia. From here, board Quark Expeditions Ultramarine for the cruise of a lifetime. Adventure meets comfort with 20 Zodiacs, 2 twin-engine Airbus H145 helicopters and just 199 guests. Admire the polar landscapes from a wraparound deck, unwind in the sauna and indulge in a board game at the Panorama Lounge. Expect nothing but the best with innovative sustainability features and more outdoor wildlife viewing spaces than other expedition ships of its size.

Every day presents a new adventure whether you choose to join the Polar Plunge, cruise past towering icebergs on a zodiac or hike a summit to view an Adélie penguin colony. Take part in multiple helicopter excursions to areas that are unreachable by shore landings, allowing you to experience new destinations accessible only by air. On this incredible journey you could explore historically relevant sites on

James Ross Island, trek to discover cones of hardened lava on Devil Island or spot lounging seals on Deception Island. Cross the famed Drake Passage and disembark in Ushuaia before a short tour of the impressive Tierra del Fuego National Park.

Ready for your expedition? Channel your inner explorer with return international full-service flights, return private charter flights, a 10-night expedition cruise to Antarctica, 3 nights of accommodation and more.

**Want more? Add extra days to your itinerary with Arrive Early and Stay Behind options in Buenos Aires, Argentina.**

Offer available for a limited time or until sold out. TRIP A DEAL PTY LTD: 50149240433

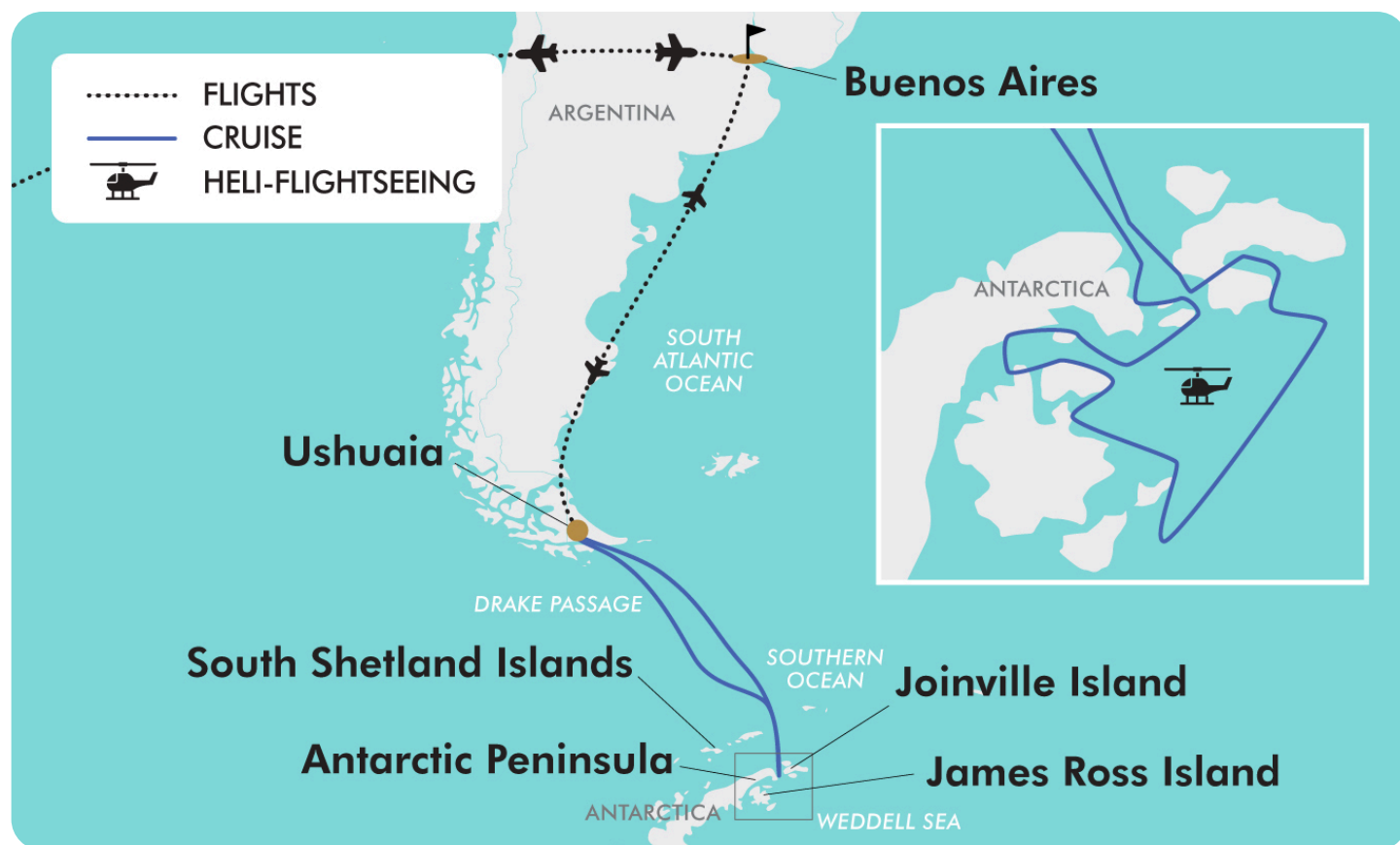
Updated: 02 Jan 2026 13:43:48

Have a question about this deal? We're here to help.  
Call our friendly team on 1300 158 912



## 16-DAY CRUISE PACKAGE | ANTARCTICA BY AIR, LAND & SEA

### The Map



Offer available for a limited time or until sold out. TRIP A DEAL PTY LTD: 50149240433

Updated: 02 Jan 2026 13:43:48

Have a question about this deal? We're here to help.  
Call our friendly team on 1300 158 912





## 16-DAY CRUISE PACKAGE | ANTARCTICA BY AIR, LAND & SEA

### The Itinerary

#### Day 1 Australia (or New Zealand) - Buenos Aires, Argentina

Today, make your own way to the airport to board your flight from Australia (or New Zealand) to Buenos Aires, Argentina.

Upon arrival, meet your driver and transfer to your hotel then enjoy the rest of your day at leisure.

**Overnight:** Emperador Hotel or similar, Buenos Aires

**Meals included:** In-Flight

#### Day 2 Buenos Aires - Ushuaia, Argentina - Begin 10-Night Antarctica Expedition

After an early breakfast at the hotel, you'll transfer to the airport and board a private charter flight to Ushuaia, Argentina.

Upon arrival, you'll be transferred from the airport to a central downtown location to enjoy some time on your own. Revel in the chance to explore this quaint port town before making your way to the pier.

After a late afternoon embarkation, sail along the historic Beagle Channel which transects the Tierra del Fuego archipelago in the extreme south of South America. Expect an air of anticipation as you depart as the next time you see land, you'll be in the remote Antarctic wilderness.

**Overnight:** Quark Expeditions 'Ultramarine'

**Meals included:** Breakfast; Dinner

#### Day 3 Drake Passage Crossing

Crossing the legendary 800-kilometre stretch of water is a must-do for many travellers. Prepare yourself for dramatic seascapes as you stand on the deck of Ultramarine and gaze at the water stretching beyond the distant horizon. Be on the lookout for dolphins, whales and seabirds as they glide over the waters. As the ship approaches the Antarctic Peninsula, keep your eyes peeled for your first glimpse of towering, multi-shaped icebergs.

**Overnight:** Quark Expeditions 'Ultramarine'

**Meals included:** Breakfast; Lunch; Dinner

#### Day 4 Cruising

Today, you'll cross the Antarctic Convergence and move into the biological Antarctic. Here, the warmer waters of the sub-Antarctic meet the cold Antarctic. Your days at sea are filled with presentations led by your Expedition Team on photography, wildlife, glaciology and history. In between presentations, spend time on deck looking for wildlife or chatting with your shipmates over a drink at the bar.

**Overnight:** Quark Expeditions 'Ultramarine'

**Meals included:** Breakfast; Lunch; Dinner

#### Day 5 Antarctica's Weddell Sea by Water, Land & Air

As Ultramarine gains access to the Antarctic Peninsula, the expedition team will look for opportunities to experience Antarctica beyond the coast. The Antarctic Sound, Erebus and Terror Gulf, and northwestern Weddell Sea are the theatre of this venture.



## 16-DAY CRUISE PACKAGE | ANTARCTICA BY AIR, LAND & SEA

### The Itinerary

Initially the plan is to sail into the Antarctic Sound to visit two towering geological features. This includes Madder Cliffs on Joinville Island, and Brown Bluff on the most northerly tip of the Antarctic Continent. The goal is to visit large Adélie penguin colonies in this area by Zodiac. Gentoo penguins and seals also frequently roam this coast. There will be time to marvel at the impressive topography, namely the 678 metre volcanic rock cliffs at Brown Bluff.

However, if weather allows, the team may decide to pivot from marine operations and embark on your first flightseeing experience of the voyage. What you will have just seen from sea, you will now experience from the sky as you gaze over the vastness of Antarctica with the perspective of a snow petrel.

**Please note:**

- **Helicopter operations in Antarctica are acutely weather-dependent.** Quark have designed their itinerary so you can spend time each day in stunning locations that allow you to enjoy helicopter opportunities if the weather allows and, alternately, to maximize your experience of Antarctic wildlife, ice and landscapes when flying conditions are not favorable. Each day on the Antarctic Peninsula will showcase the flexibility and technical prowess of the industry-leading expedition team, pilots and crew.
- **The itinerary for days 5 to 9, including specific locations visited and their order, is subject to change at the discretion of the ship's crew.**

**Overnight:** Quark Expeditions 'Ultramarine'

**Meals included:** Breakfast; Lunch; Dinner

#### Day 6 Antarctica's Weddell Sea by Water, Land & Air

Continuing through Antarctic Sound and into Erebus and Terror Gulf, located on the tip of the southeast side of the Antarctic Peninsula, Ultramarine will be positioned to maximise both helicopter and Zodiac excursions.

The James Ross Island group offers a myriad of opportunities to explore historically relevant sites that were discovered by the Swedish Antarctic Expedition of 1901-04. Upon landing, you could hike to a summit to view an Adélie penguin colony, as well as the northern Weddell Sea. If the tide is low, there may be grounded bergs in the shallow waters, a surreal sight you're unlikely to encounter on many polar expeditions.

These islands are highly valued for their geological significance due to fossil finds, ventifacts (ancient rocks polished smooth over time by wind and grains of sand) and the remains of the KT Boundary. This marks the transition between the Cretaceous Period (dinosaurs and reptiles) and the Tertiary Period (mammals).

Quark Expedition's goal is to provide opportunities for you to see ventifacts up close so you can better appreciate the significance of wind erosion over long periods of time. These ventifacts provide valuable information about the climatic history and prevailing wind patterns of the region.

**Please note:** Atmospheric conditions influence when and where you fly or cruise, on any day of your voyage, at any of the superb locations in the region.

**Overnight:** Quark Expeditions 'Ultramarine'

**Meals included:** Breakfast; Lunch; Dinner







## 16-DAY CRUISE PACKAGE | ANTARCTICA BY AIR, LAND & SEA

### The Itinerary

#### Day 7 Antarctica's Weddell Sea by Water, Land & Air

Enjoy another day continuing your Antarctic exploration with Quark Expeditions.

When not flying, you'll shift focus from geology to wildlife. For instance, you could Zodiac cruise to Devil Island and hike to the twin towering cones of ash and hardened lava that rises from a bay on the north shore of Vega Island. Alternatively, the ship may aim for renowned Paulet Island. This area is home to one of the largest Adélie penguin rookeries in the area, as well as the historic hut built by members of the Swedish Antarctic Expedition of 1901-04. A cross marks the grave site of Ole Wenersgaard, a member of the crew.

**Overnight:** Quark Expeditions 'Ultramarine'

**Meals included:** Breakfast; Lunch; Dinner

#### Day 8 Antarctica's Weddell Sea by Water, Land & Air

Another potential destination for helicopter operations includes the dramatic headland on the northeastern tip of Joinville island. One of the first features you'll see as you approach the island by air is, of course, the distinct rocky headland sticking out of the rugged, icy landscape. This prominent landmark has proven useful for navigation and exploration over the years.

**Overnight:** Quark Expeditions 'Ultramarine'

**Meals included:** Breakfast; Lunch; Dinner

#### Day 9 Antarctica's Weddell Sea by Water, Land & Air

Expect a dramatic finale to the helicopter-focused segment of the expedition as you prepare to return back across the Drake Passage. While your expedition team has devised multiple back-up plans crucial on any polar expedition, the ultimate goal at this point is a heli-flightseeing excursion to Livingston Island, home of the most spectacular mountains of the South Shetland Islands. Among the towering peaks you'll see from air are the Tangra Mountains (stretching 32 kilometres long by 8.5 kilometres wide), Mount Friesland (rising to 1,700 metres), Bowles Ridge and Pliska Ridge (667 metres).

Another landing option is Deception Island. Along with waddling penguins and lounging seals, you can also see the rusting remnants of long-ago whaling operations on the beach. The landscape of Deception Island often presents opportunities for longer walks to striking vistas. The stark contrast between snow and dark volcanic sand, and the geothermic steam along the shoreline gives this location an atmospheric feel.

**Overnight:** Quark Expeditions 'Ultramarine'

**Meals included:** Breakfast; Lunch; Dinner

#### Day 10 Drake Passage Crossing

Take some time, as you journey back across the 800-kilometre Drake Passage, to relax after your off-ship adventures.

Ultramarine is home to Tundra Spa, where you can book a soothing facial treatment or massage (charges apply). Additionally, you can also relax in the sauna with floor-to-ceiling windows that keep you connected to the polar seas while you rejuvenate indoors.



## 16-DAY CRUISE PACKAGE | ANTARCTICA BY AIR, LAND & SEA

### The Itinerary

**Overnight:** Quark Expeditions 'Ultramarine'

**Meals included:** Breakfast; Lunch; Dinner

#### Day 11 Cruising

Your polar learning isn't over yet, join your onboard experts as they continue to share their vast polar expertise through scheduled presentations in the Ambassador Theater. The state-of-the-art, high-resolution LED screen wall in the main theatre ensures high-definition viewing of presentations from your Expedition Team from any angle. This is an excellent opportunity to ask any lingering questions you have about any aspect of your Antarctic experiences.

**Overnight:** Quark Expeditions 'Ultramarine'

**Meals included:** Breakfast; Lunch; Dinner

#### Day 12 Disembark Cruise Ushuaia - Tierra del Fuego National Park - Buenos Aires, Argentina

You will arrive in Ushuaia in the morning and disembark after breakfast.

Enjoy a tour of Tierra del Fuego National Park for a taste of Patagonia, after which you'll transfer to the airport for the return group charter flight to Buenos Aires.

Upon arrival, meet your driver at the airport and transfer to your hotel. Enjoy the rest of the day at leisure.

**Overnight:** Grand Brizo or similar, Buenos Aires

**Meals included:** Breakfast

#### Day 13 Buenos Aires Free Day

Spend today discovering the many charms of Buenos Aires at your own pace.

Visit historic Plaza de Mayo, the grand Metropolitan Cathedral and charming colonial Cabildo. Stroll through Palermo's elegant parks and admire the French-inspired mansions of Recoleta and Retiro, echoing the city's Parisian aspirations.

As evening falls, consider heading to atmospheric Barracas. Sip local wine in a traditional bar or try a tango step or two in the dance's birthplace.

*Please note: The activities mentioned above are suggestions, additional charges may apply.*

**Overnight:** Grand Brizo or similar, Buenos Aires

**Meals included:** None

#### Day 14 Buenos Aires, Argentina - Australia (or New Zealand)

The time has come to begin your journey back home. At the appropriate time, meet your driver at the hotel and transfer to the airport for your flight home.

**Meals included:** In-Flight

#### Day 15 In Transit

**Meals included:** None

#### Day 16 Arrive Australia (or New Zealand)

Welcome home, we hope you have enjoyed your trip.





## 16-DAY CRUISE PACKAGE | ANTARCTICA BY AIR, LAND & SEA

### The Itinerary

*Please note: Some flights may arrive +1 day later.*

Meals included: None



16-DAY CRUISE PACKAGE | ANTARCTICA BY AIR, LAND & SEA

Tour Inclusions

HIGHLIGHTS

- Explore the rarely-visited east side of the Antarctic Peninsula
- Discover the world's iciest continent by air, land and sea
- Experience at least 2 heli-flightseeing excursions included in the trip
- Participate in one heli-landing amidst Antarctica's vast coastal mountains
- Enjoy off-ship excursions by Zodiac for intimate marine and land-based experiences
- Journey into the remote Weddell Sea, Erebus and Terror Gulf and Antarctic Sound
- View icebergs amassed and birthed from the Larsen and Filchner-Ronne Ice Shelf
- Travel aboard the technologically-advanced Ultramarine
- Enjoy the sauna or one of the ship's many other onboard amenities
- Learn from polar experts during the enhanced onboard education program
- Tour Tierra del Fuego National Park for a taste of Patagonia
- Enjoy 3 nights in Buenos Aires, Argentina
- Please note: Medical clearance is required prior to boarding for all expedition cruises to Antarctica

FLIGHTS

- Return international full-service flights (economy class), surcharges may apply
- Return internal charter flights (economy class) from Buenos Aires to Ushuaia

CRUISE

- 10-night voyage exploring the east side of the Antarctic Peninsula
- Cruise aboard Quark Expeditions' Ultramarine expedition vessel
- Spend 5 days in Antarctica with multiple small group Zodiac landings, helicopter flightseeing and activities at numerous locations
- Complementary standard Wi-Fi for one device
- Official Quark Expeditions parka to take home
- Muck boots (loaned to you for the duration of your expedition)
- Trekking poles (available upon request)
- Specialist Expedition Leaders who bring a wide range of experience and expertise to every adventure

Included Activities

- Helicopter Flightseeing - Soar over the polar regions of one of Ultramarine's onboard helicopters
- Exclusive Heli-Landing - Set foot in remote areas that can only be safely accessed by helicopter
- Zodiac Cruising - Cruise to remote sites among icebergs, whales and seabirds
- Hiking - Organised hikes range from short jaunts to the top of lookouts, visits to see wildlife or longer walks of several kilometres over ice and rock
- Presentations - Enjoy daily chats with and presentations by the world-class onboard polar experts
- Polar Plunge - Brave the polar waters
- Photography - Photography guides will help you hone your skills to capture the beauty of the polar regions

ACCOMMODATION

- 3 nights of 4 and 5-star accommodation in Buenos Aires, Argentina

Offer available for a limited time or until sold out. TRIP A DEAL PTY LTD: 50149240433

Updated: 02 Jan 2026 13:43:48





16-DAY CRUISE PACKAGE | ANTARCTICA BY AIR, LAND & SEA

Tour Inclusions

DINING

Enjoy 30 meals including all while cruising

Beer, standard wines, select spirits and cocktails included onboard during bar service hours and dinner

Ultramarine Onboard Dining

Balena Restaurant - Featuring table tops that accommodate 2 to 10 guests while also enjoying views from every seat and direct access to the wraparound deck

Bistro 487 - Dine at a meal in the Bistro which offers an indoor and outdoor dining experience, perfect for enjoying the polar landscapes

Panorama Lounge & Bar - Enclosed in glass and featuring unobstructed views, it serves as a cosy gathering point where guests can sip a glass of wine, play a board game or bust a move on the dance floor at the end of the night

ESSENTIALS

English-speaking expedition leaders

Airline taxes and surcharges

Cruise taxes and surcharges

TRANSFERS

All transfers included

Offer available for a limited time or until sold out. TRIP A DEAL PTY LTD: 50149240433

Updated: 02 Jan 2026 13:43:48

# Important Information

*\*Please note: All information provided in this brochure is subject to both change and availability. Prior to purchase please check the current deal for up-to-date information. If you have already purchased this deal, the terms and conditions on your Purchase Confirmation apply and take precedence over the information in this brochure.*

## Booking Information

After purchase, you will receive a receipt and a Purchase Confirmation, directing you to an online Passenger Information Form. You must complete the Passenger Information Form within 72 hours of purchase.

Any special requests, preferences and optional extras MUST be clearly stated in your Passenger Information Form. Any change requested after submitting your Passenger Information Form cannot be guaranteed, is strictly subject to availability and will incur surcharges as outlined in the Schedule of Fees below.

*Please note: All countries and territories have different entry requirements in relation to vaccinations, quarantine/isolation periods and travel restrictions. Due to the evolving nature, we would ask all of our customers to monitor, meet and adhere to the specific requirements of their intended destination(s) in the lead-up to and immediately before travel, as well as any requirements post-travel upon their return.*

## Our Policies

### Cancellation & Refund Policy

By placing a booking with us, you acknowledge the following important information:

- **we act as your booking agent ;**

TripADeal is a booking services provider, and curates the Travel Offers available on our website. We act as your booking agent, and we receive payment for the Booking Services as part of the booking price, however, we do not provide any of the Travel Services (flights, accommodation, tours or other products or services) included in your booking – the Travel Services are provided by a number of third party Travel Suppliers.

- **each booking is unique ;** our Travel Offers are made up of a variety of different components and are, during the booking process, uniquely tailored to suit your requirements, for example, departure dates and ports, flight and room upgrades, tour inclusions, etc.

- **changes/modifications to your booking may not be possible ;** once your booking has been made, changes or modifications may not be possible, and where possible, may incur a fee. It is important to ensure that the information you provide during the booking process is accurate and up to date, and that you read the Travel Offer carefully before placing your order.

- **Travel Offers are a package ;** our Travel Offers have been curated into package offerings and must be used as a package – individual components cannot be used independently of the full package offering.

- **our Travel Offers are generally non-refundable ;** in order to provide great value Travel Offers, we work with a variety of Travel Suppliers to find the best deals – this often means the Travel Suppliers' offerings are non-refundable to ensure the best price. We recommend that you obtain travel insurance as soon as you make a booking with us.

To read more about our Cancellation and Refund Policy, please [click here](#).

### General Terms & Conditions

By placing your booking with us, you acknowledge and agree to our [Terms & Conditions](#), [Privacy Policy](#) and [Cancellation Policy](#).

## Offer Essentials

This Travel Offer is valid for travel on selected dates until the 7 December 2026. This Travel Offer is priced per person based on a twin share.

### Departure Dates & Surcharges

See checkout for live dates and availability.

### Single Traveller Supplement

For solo travellers, a mandatory single

supplement applies.

- Explorer Suite: \$20,000 per person
- Balcony Suite: \$22,000 per person

*Please note: Accommodation for single customers who are travelling on a tour or cruise package may be in a single room, depending on availability.*

### Child Policy

- No child discounts are offered. The full price applies to all children travelling with their parents.
- Valid for children 8 years old and over.
- Participation in adventure options is limited for guests 16 year of age or above.

*Please note:*

- *Children must be accompanied by a responsible adult 18 years old and over to travel. No unaccompanied minors are allowed.*
- *Personal mud boots, waterproof and warm outer gear, and Personal Flotation Devices may not be available in children's sizes. Please bring properly sized boots, waterproof outerwear, and a Quark Expedition Inc approved Personal Flotation Device for each child. If the child does not have appropriately sized boots or waterproof outer gear, they will not be permitted to go ashore, and one parent or guardian will need to stay onboard with the child. If the child does not have an appropriately sized Personal Flotation Device, they and their parent or guardian may be denied boarding the vessel and no refund or compensation will be given.*

### Height & Weight Requirements

- Minimum weight: 29 kilograms
- Minimum height: 1.2 metres

## Flights

### Departure Cities

Sydney, Melbourne, Brisbane, \*Adelaide, \*Perth or \*Auckland

### Departure City Surcharges

- Brisbane: \$100 per person
- Adelaide: \$300 per person
- Perth: \$500 per person



# Important Information

- Auckland: \$100 per person

## International Full-Service Flight(s)

- Cabin Class: Economy Class

*Please note: We cannot accommodate one-way flights. Travellers must take all included flights within the package, and any flights intentionally forfeited will result in later flights being subject to cancellation.*

## Internal Charter Flight(s) Used

- Cabin Class: Economy Class

### Route

- Buenos Aires to Ushuaia
- Ushuaia to Buenos Aires

## Internal Charter Flight Information

Baggage allowance per person:

- 1 x 23kg of checked baggage
- 1 x 8kg of carry on baggage

## Preferred Airline Surcharge

Not available.

## Arrive Early & Stay Behind Options

### Arrive Early

Buenos Aires, Argentina - From \$300 per person, subject to availability.

### Stay Behind

Buenos Aires, Argentina - From \$300 per person, subject to availability.

### Please note:

- *This fee does not include extra nights' accommodation, meals or airport transfers.*
- *Flight booking changes or cancellations after air tickets have been issued are not guaranteed and may incur additional fees and fare difference, subject to the airline cancellation and change policies.*
- *Flight changes are subject to availability at the time of booking.*
- *A high-season Arrive Early or Stay Behind can be purchased for an additional charge, subject to availability. For pricing, please refer to the cart.*

- *You can arrive early, up to 60 days before your package's start date, and/or stay behind until 60 days after your package's end date. Should you wish to arrive earlier or stay behind for more than 60 days, please contact us to request availability. Additional costs may apply.*
- *High season surcharges apply to flights departing between the below date ranges:*

16th June 2025 - 20th July 2025

15th September 2025 - 12th October 2025

1st December 2025 - 19th December 2025

20th December 2025 - 4th January 2026

5th January 2026 - 31st January 2026

3rd April 2026 - 20th April 2026

26th June 2026 - 17th July 2026

18th September 2026 - 9th October 2026

12th December 2026 - 18th December 2026

19th December 2026 - 3rd January 2027

4th January 2027 - 26th January 2027

19th March 2027 - 28th April 2027

19th June 2027 - 18th July 2027

11th September 2027 - 10th October 2027

10th December 2027 - 19th December 2027

20th December 2027 - 3rd January 2028

## Stopover Packages

- Santiago, Chile

Includes:

- 2, 3 or 5 nights in 4-star accommodation
- Daily breakfast
- Return airport transfers

For pricing, please refer to the payment cart at checkout.

### Please note:

- *When a pre and post-tour stopover is chosen, the same stopover location must be chosen each way, due to the airline used.*
- *When selecting an Arrive Early or Stay Behind in conjunction with a Stopover Package, the stopover will take place after the departure date you select for your Arrive Early or Stay Behind.*
- *Stopover packages are subject to availability.*

- *In the event that a purchased stopover package and a purchased preferred airline upgrade are not compatible, you will have the option to receive a refund for the preferred airline upgrade or be offered an alternative stopover city option, e.g if you choose to fly with Singapore Airlines you cannot stopover in Dubai.*
- *Blackout dates apply to flights departing between the below date ranges:*

Christmas and New Years Eve: 22nd December 2025 - 2nd January 2026

## Flight Class Upgrades

Business Class: For pricing, please refer to the payment cart at checkout.

### Please note:

- *Flight upgrades are subject to availability and pricing changes (if we cannot fulfil your request, the upgrade cost will be refunded).*
- *On any upgrade purchase, short-haul flights and domestic flight sectors are not guaranteed, subject to aircraft configuration.*

## Outbound Flights

*Please note: Due to flight scheduling and availability, some departures may occur on Day 0. Affected customers must be available to depart the day before. Flight times will be indicated on your final documents, issued 4-6 weeks before departure.*

## Missed Flights

If you fail to arrive for your outbound flight, you risk all flight and land arrangements in your destination being automatically cancelled by the airlines and land operator, respectively. Additional fees may apply to reinstate these services. If you miss your flight for whatever reason, please contact us as soon as possible to make arrangements.

## Cruise

### Medical Disclaimer

Travel to Antarctica is physically demanding, and our Travel Suppliers require all guests to obtain medical clearance before departure even if you

# Important Information

don't intend to disembark at Antarctica. This involves completing a medical form and may require medical clearance from a doctor, which could incur additional costs. Any guests who fail to provide the necessary medical documentation will be denied boarding.

## Quark Expeditions Ultramarine Ship

Ultramarine, operated by Quark Expeditions, is a state-of-the-art polar expedition ship purpose-built to take guests beyond the familiar—into some of the most remote and breathtaking regions of the Arctic and Antarctica. Designed for immersive exploration, Ultramarine offers the perfect balance of comfort, innovation, and adventure.

Onboard, guests are treated to an impressive array of amenities. The Balena Restaurant and Bistro 487 serve delicious, globally inspired cuisine in elegant and casual settings, while the Panorama Lounge and Bar offers sweeping views of the polar landscapes—an ideal spot to relax with a drink and share stories with fellow adventurers. Social spaces are a key part of the Ultramarine experience: enjoy panoramic views in the comfortable lounges, or head out to the wraparound deck to chat with fellow travellers and take in the crisp polar air. The ship also includes a Polar Boutique for expedition essentials, a Tundra Spa (charges apply) and Sauna, a Fitness Center, and even an outdoor walking track and pool, helping guests stay active and refreshed throughout their journey.

Ultramarine is equipped with modern features that enable deeper exploration. Its 40-day operational range, four embarkation points, water-level Zodiac hangar, and twin-engine helicopters allow for flexible, efficient off-ship adventures. Guests prepare for excursions in the spacious mudroom, where they can gear up for activities like kayaking, paddleboarding, or even a polar plunge (charges may apply). The ship also includes MAGS (Micro Auto Gasification System) technology for environmentally responsible waste management. Education and enrichment are at the heart

of every Ultramarine voyage. In the Ambassador Theater, guests engage with world-class experts during informative presentations covering topics such as wildlife, polar history, marine biology, ecology, and geology—enhancing both understanding and appreciation of these extraordinary destinations.

From premium accommodations and welcoming social spaces to cutting-edge exploration tools and expert-led education, Ultramarine delivers an unforgettable polar experience built on comfort, connection and discovery.

## Unique Experiences Included

### Flightseeing

Imagine soaring over the polar regions from the comfort of a helicopter and enjoying the most astounding aerial views imaginable of the frozen Antarctic Ocean, of snow-capped ice ridges, massive crevices, and of melt pools ranging from cerulean to deep, spectacular turquoise. Flightseeing on polar vessels like Ultramarine provides guests with an entirely different perspective of the polar regions. Helicopters take passengers to places Zodiacs and ships can't reach. Helicopter flightseeing typically includes 7 to 9 passengers. No experience is necessary. Bring your camera—and enthusiasm.

### Exclusive Heli-Landing

Imagine setting foot in an area of the world that can only be safely accessed by helicopter. With a small group of fellow passengers and expert guides, you'll board one of Ultramarine's two twin-engine helicopters to soar off to an exclusive polar site where no ships can navigate. Expect stunning bird's-eye views during your flight, and then, upon arrival, simply sit back, relax and take in the splendor from "the best seat in the house": glacial amphitheaters, breath-taking summits, and more. Traveling in groups of 12 with no more than 4 groups (48 guests) at a time on each landing, you'll have time to relax and quietly reflect on the beauty of your polar surroundings, after which you'll be

picked up by the helicopters in the same location and returned to Ultramarine. Each heli-landing experience is uniquely curated by the expedition team, taking conditions and location capacity into consideration.

### Zodiac Cruising

Zodiacs are used for transferring you ashore, transporting your luggage when necessary and for taking you ocean-level cruising among icebergs, whales and seabirds. During the expedition, you will visit remote and isolated sites that are accessible only by Zodiac. These large, heavy-duty inflatable vessels are extremely safe and were specially designed for expedition work. Zodiacs are the workhorses of Polar expeditions. Separate air compartments retain a large reserve of buoyancy even if these sturdy boats are damaged. Their flat bottom design permits the craft to land directly onto the cobble and ice-strewn beaches that you will encounter on your Polar expedition.

### Hiking

Hiking in the polar regions differs from your typical trail experience. Here, in a tree-less terrain, you are the tallest figure on the landscape as you walk over spongy tundra, crusty snow or sandy beaches in remote parts of the Arctic and Antarctica. Stepping ashore anywhere in the polar regions means you're not a distant observer. The organised hikes range from short jaunts to the top of lookouts or visits to see wildlife or longer walks of several kilometres over ice and rock and snow. Hiking excursions may last from two to three hours with plenty of time for photographs of wildlife, learning moments from your experienced guides, or just time to stand back and admire the incredible polar surroundings. No experience is necessary but participants should be able to get in and out of a Zodiac and walk on uneven terrain. Hiking options are tailored to all interests and abilities, from those who want to contemplate the landscape in silence to photographers who want that perfect image to energetic travelers who want to summit a peak in the hopes of seeing wildlife in their natural habitat.



# Important Information

Equipment you'll be provided with for hiking outings:

- Trekking poles are available upon request
- Bring your Quark Parka and collapsible water bottle provided at embarkation (they're yours to keep)
- Muck boots (loaned to you for the duration of your expedition)

## Polar Plunge

The Polar Plunge is scheduled once during each voyage. Throughout the journey, the Expedition Leader and Captain constantly monitor conditions in order to choose the optimal time and location. The Polar Plunge sometimes takes place onshore or, in many cases, from the gangway or Zodiac. All participants wear a tethered harness and plunge into the polar waters from the side of Zodiac or safety of the gangplank cheered on, of course, by fellow passengers and Expedition Team. Safety is paramount—the onboard physician always attends the Polar Plunge. Guides in survival gear circle the area in Zodiacs as guests take their turn jumping or cannon-balling into the polar waters.

## **Onboard Currency**

\$ USD

## **Cabins/Staterooms**

### Explorer Suites

At approximately 26.5 m<sup>2</sup>, these suites are perfect for people traveling together or solo guests looking to share with like-minded individuals. This suite maximizes interior living space while still offering guests the opportunity to stay connected to the outdoors. These entry-level twin suites are the largest available on a ship of this class.

Features: One Double or two Single beds, sitting area with sofa bed, picture window, desk, refrigerator, TV, private bathroom with shower and heated floors.  
Standard Amenities: Hair dryer, bathrobe, slippers, shampoo, conditioner, shower gel, complimentary water bottle.

### Balcony Suite

Approximately 21m<sup>2</sup> of indoor living

space, and a 4.8 m<sup>2</sup> balcony, this entry-level balcony suite is one of the largest available on a ship of this class. This suite is perfect for guests who are looking for both indoor and outdoor living spaces. There are four connecting suites in this category, making this an excellent option for families or groups wanting to stay connected to each other during their expedition (subject to availability).

## **Wildlife**

TripADeal cannot guarantee animal sightings. Wildlife are unpredictable and factors such as weather conditions, predatory fear and animal movements can impact sightings.

Features: One Double or two Single beds, sitting area with sofa bed, private balcony, desk, refrigerator, TV, private bathroom with shower and heated floors.  
Standard Amenities: Hair dryer, bathrobe, slippers, shampoo, conditioner, shower gel, complimentary water bottle.

### *Please note:*

- *All cabins are subject to availability; some cabins may have restricted views.*
- *Cruise cabins are booked on a guaranteed basis and are assigned by the cruise line prior to departure.*

## **Cruise Arrival & Departure Times**

Please keep in mind that the provided cruise arrival and departure times are an approximate and will be finalised upon receipt of your cruise tickets.

## **What To Pack For Your Antarctica Expedition**

Packing for Antarctica doesn't have to be daunting. The following list will help you prepare optimally for your polar adventure of a lifetime. To make it easier for you, all Quark Expeditions voyages to Antarctica include a complimentary Quark 3-in-1 Parka (with a waterproof outer shell and a removable inner liner to adjust to the activity at hand and your personal thermo-regulation needs, as required), a collapsible reusable water bottle, and a loan of insulated waterproof boots.

1. Waterproof Pants (mandatory for every

Zodiac and helicopter ride. For Ultramarine guests who are participating in Helicopter flights, we recommend packing loose fitting rain pant style waterproof pants, rather than fitted ski pants. You will also be required to wear a drysuit, which our team will help you prepare for on the ship)

2. Base-layer wool or synthetic top\*
3. Base-layer wool or synthetic bottom\*
4. Mid-layer warm or fleece top\*
5. Mid-layer warm or fleece bottom\*
6. Warm wool or synthetic socks (keep a dry pair in your bag, and bring extras for layering)
7. Glove liners \*
8. Hand and feet warmers\*
9. Binoculars
10. Waterproof gloves or mitts (bring an extra pair)
11. Scarf, buff, or other face protection
12. Warm hat that covers ears (bring an extra)
13. Waterproof, lightweight backpack or dry sack &/or rain sleeve for camera or a waterproof phone case (to keep camera & gear dry)
14. Polarized sunglasses with UV protection (consider bringing an eyewear retainer: string/clip etc.)
15. Ski goggles (for Zodiac cruising on snowy or windy days)
16. UV protection (sun hat, polarized sun glasses, sun block, lip balm etc.)
17. Collapsible Walking stick for hikes (if required). Quantities are available on every vessel to borrow.

\* Recommended layering depending on the conditions of the day and reflecting your personal thermo-regulation comfort levels

## **To Wear Onboard**

1. The complimentary Quark 3-in-1 Parka provided on board is designed with a waterproof shell that can be worn out on deck, and a removable liner that you can wear to stay comfortable indoors.
2. Comfortable casual clothing like lighter shirts, pants or jeans, etc. (in case the ship gets warm)
3. Comfortable non-slip closed-toed, heelless shoes (flip flops, sandals or slip-on shoes should not be worn on board due to safety concerns)

# Important Information

4. Workout attire (for the fitness center!)
5. Swimsuit (for the Polar Plunge or for use in the sauna. See your ship book for details.)

Just a reminder: No formal evening wear required on our voyages but if you would like to bring something a little more dressy for the Captain's welcome and farewell cocktails you may certainly do so.

## Additional Items

1. Passport, visas, immunization records, travel documents, etc. as required
2. Camera gear complete with charger, storage medium, transport & cleaning kit (lens cloth etc.) and extra batteries
3. Waterproof cell phone case or rain sleeve for camera
4. Earplugs and eye masks for sleeping
5. Voltage converters and plug adapters
6. Moisturizer for face and hands (skin dryness due to wind and temperature changes)
7. Seasickness, indigestion, headache, or other medications
8. Small amount of local currency (see pre-departure book for more details)
9. Additional reusable thermos or water bottle (a collapsible reusable water bottle will be provided onboard)

## Accommodation

### Accommodation Used

#### 4 & 5-Star Properties (Self-Rated)

Pre-cruise hotel provided by Quark Expeditions: Emperador Hotel or similar  
Post-cruise hotel: Grand Brizo or similar

*Please note: Accommodation/rooms offered are based on a lead-in room type and are subject to availability based on seasonality. In the instance a property is not available, a similar standard of accommodation will be provided. Properties will be confirmed and included in your travel pack, which you will receive 4-6 weeks before travel.*

### Extra Nights

Not available.

*Please note: If you are interested in booking additional nights of accommodation pre or*

*post-tour, please wait until you receive your travel documentation approximately 4-6 weeks before departure for the confirmed list of hotels. If booking your own additional accommodation directly with the hotel, please be aware that you may be required to change rooms at the start/end of your tour.*

### Maximum Room Capacity

2 people.

### Triple Share

Not available.

### Bedding Configuration

Twin or double (subject to availability).

### Wildlife

TripADeal cannot guarantee animal sightings. Wildlife are unpredictable and factors such as weather conditions, predatory fear and animal movements can impact sightings.

## Optional Tours/activities

*Please note:*

- *Some tours or shore excursions require minimum numbers to operate.*
- *Shore excursions can be booked/reserved directly with the cruise line before travel (subject to availability)*
- *Shore excursions can also be booked whilst onboard (subject to availability).*

### Wildlife

TripADeal cannot guarantee animal sightings. Wildlife are unpredictable and factors such as weather conditions, predatory fear and animal movements can impact sightings.

- Shore excursion programmes and itineraries may vary depending on local conditions and/or any unforeseen events concerning the timing on the day of the tour. Some excursions are very popular, and therefore availability cannot always be guaranteed, it is advisable to book in advance to avoid disappointment.

## Exclusions

- Visa fees and requirements

- Domestic transfers and flights not stated in the deal offer
- Meals/beverages not stated in the deal offer
- Optional gratuities/tipping
- Optional activities/tours
- Personal expenses
- Travel insurance
- Any costs associated with an interruption to your tour as a result of an airline schedule change or cancellation
- Mandatory city tax

## Gratuities/tipping

*Please note: Tipping for services provided is always a matter of personal discretion; however, please be aware that many locals consider tipping part of their normal remuneration, and they may approach you for payment; there's no need to be intimidated by the request.*

### Cruise

Quark Expeditions understand whatever amount you give is at your own discretion. As a guideline, it is suggested the amount of USD\$15 to USD\$25 per traveler per day. At the end of the voyage you will have the option to charge a gratuity amount to your onboard account, or to place cash in an envelope. Gratuities are shared among the hotel and expedition team members.

## Other Important Information

### TOUR GUIDE VS. TOUR LEADER

#### Tour Guide

Often locals with intimate knowledge of an area, its culture, and history. Their role entails providing commentary, routing the tour, and seeing that people have a good time. They are a licensed, qualified expert who supplies specific information on the history, art, architecture and culture of the city/village/attraction where they are guiding the tour. The guide meets the group at the required place and leaves it at the end of the tour; they do not travel with the group.

#### Tour Leader

An experienced person tasked with



# Important Information

ensuring the smooth operation of tours, as well as providing practical support to passengers throughout the whole trip. Their role primarily includes assisting with accommodation, transportation between locations, and communication with tour guides at each stop. A tour leader may provide general guidance around a city or village and offer information on the place visited on the bus. However, they are not required to have specific art, architecture, or historical knowledge. They are not allowed to provide a guided tour or commentary of a city/village/attraction once there and, if caught doing so, can be fined.

*Please note: Tour leaders/guides are not a standard inclusion in all travel offers. Tour leaders/guides will only be made available when required to enhance the experience of the destination featured.*

## CLIMATE & AVERAGE TEMPERATURES

### Buenos Aires

In November and December, Buenos Aires transitions from spring into summer, bringing warm to hot weather and a lively atmosphere. In November, daytime temperatures typically range from 20°C to 28°C, with mild nights around 15°C to 18°C. The city enjoys plenty of sunshine, with occasional showers and rising humidity as summer approaches. By December, conditions become hotter and more humid, with daytime highs between 24°C and 31°C and nighttime temperatures around 18°C to 21°C. While summer storms may bring bursts of rain, there are still many sunny days. This period is especially vibrant, with blooming jacaranda trees in November and a festive energy building in December.

### Antarctica

In November and December, Antarctica enters its summer season, bringing milder temperatures and increased daylight—ideal conditions for expedition cruising. Along the Antarctic Peninsula, where most visitor activity occurs, November sees daytime temperatures ranging from -5°C to 2°C. Snow and ice still dominate the landscape,

offering pristine, dramatic scenery. Wildlife activity begins to pick up, with penguins returning to their nesting grounds and seals appearing on ice floes.

By December, temperatures warm slightly, typically ranging between -2°C and 4°C, and the continent enjoys nearly 24 hours of daylight. Snow begins to melt in some areas, revealing rocky coastlines and making landings more accessible. This is also a peak time for wildlife viewing, as penguin chicks begin to hatch and whales become more active. While conditions remain cold and unpredictable, November and December offer a breathtaking window into Antarctica's natural beauty and thriving polar ecosystem.

### Weather

We always suggest referring to an online source for the most up-to-date weather information for your destination/s.

### FLIGHTS

### Seat Selection & Frequent Flyer Points

We do not arrange seat selection. It is essential to highlight that some airlines do not allow pre-selected seats. We strongly suggest you contact the airline directly with seating allocation requirements and/or arrive at the airport earlier to arrange your seating. While we do not add frequent flyer member details to bookings, you can do this directly with the airline once you have your flight information.

### Dietary Requests

Meal options and availability differ between airlines and routes therefore not all dietary requests can be accommodated. If your flight includes meals we will select the most suitable option available based on the dietary requirements you have specified. All meal requests are subject to airline approval and are not guaranteed, therefore we recommend preparing for your flight by bringing appropriate food for yourself, as required.

### Passport Validity

Customers must provide valid passport details either at the time of purchase or no

later than 90 days before the departure date. Failure to do so may result in the cancellation of the booking. Customers will be responsible for any costs and fees incurred in this instance.

### CRUISE

#### Embarkation/Disembarkation

- Begins approximately 2 hours after docking.
- Due to security reasons, all guests must be on board 2 hours before sailing.
- Itineraries are subject to change at any time without notice.
- Check your specific sailing for exact departure and arrival times. All times are local to the port.

*Please note: Strict Covid-19 terms may also apply regarding proof of insurance covering Covid-19 and/or vaccination. Please refer to the cruise lines' terms and conditions for further information before boarding.*

#### Cruise Loyalty Discounts

*Please note: Travellers must contact the cruise line directly upon receiving their travel documents in order to request any membership benefits they may be entitled to.*

#### Meals

For meals not included, the tour leader (when available) will offer assistance with reservations, suggestions and directions to local restaurants. It is your responsibility to notify us of any dietary requests/requirements.

*Please note: We will do our best to meet your requests/requirements; however, we cannot guarantee that we will always be able to.*

#### Luggage

You will be responsible for all your personal belongings whilst on tour. You must carry your own luggage to and from the transfers, hotel and cruise ship.

#### OTHER

#### Mobility

If you require wheelchair access please contact our friendly sales and service team

# Important Information

to inquire on your behalf.

## Fitness Level Required

Adventure (and spontaneity) create some of the best travel memories. Bear in mind, your home schedules and timings might not be adhered to on tour - it's all part of the fun!

A moderate level of fitness will be required.

Expect a moderate pace of touring with a focus on guided tours that may include full days with extended activity, guided city tours or nature walks. You will require a general level of fitness for unassisted navigation of stairs and inclines, longer distances with possible periods of standing when visiting sites, walking on sloping, uneven ground or elevations. You will be responsible for your own luggage and have the ability to board all modes of transport without assistance.

### Please note:

- *Many areas may be inaccessible to wheelchairs or mobility scooters, where the unassisted use of personal walking sticks and other aids may be required. Although some assistance may be available, every traveller should be self-reliant during all aspects of their travel.*
- *It is expected that every traveller must be self-reliant and able to undertake all aspects of their own travel. Please speak to your booking agent about your personal circumstances and any assistance requirements to ensure this tour is right for you.*
- *If you have any concerns, please consult your healthcare provider prior to purchase/travel.*

## Yellow Fever

A valid international certificate of vaccination against Yellow Fever is required in many countries. You may need to present this on arrival at the airport or border crossing. Some countries will refuse entry if you are unable to present your certificate. It's also common for your home country to request a Yellow Fever certificate upon arrival. You must check with your doctor well before leaving home

about the Yellow Fever requirements for the countries you'll be visiting.

## Sightseeing

*Please note: If entry to a site is affected by changes in operating hours or public holiday closures, your itinerary, where possible, may be adjusted, or a similar activity will be offered in its place (subject to availability).*

## Wildlife

TripADeal cannot guarantee animal sightings. Wildlife are unpredictable and factors such as weather conditions, predatory fear and animal movements can impact sightings.

## Shopping

Shopping overseas can be a daunting and confusing experience, especially when there is a language barrier. Please be very cautious when foreign currencies and prices are involved. If paying by credit card, please pay close attention to the amount you are being charged and keep all your receipts. Do not make any purchases you are not comfortable with or feel pressured into. If you are uncertain or need assistance with the language barrier, please seek assistance from your Tour Guide/Leader. Please refer to our [Terms and Conditions](#) regarding shopping for further information.

## Visas

### Argentina

A tourist visa for Argentina is no longer required if travelling on an Australian Passport. Passengers must hold a passport valid at least six months on entry with one blank visa page.

*Please note: Effective immediately, all international travellers to Argentina must hold valid travel insurance with medical coverage. This insurance may be requested and verified upon arrival in the country. Argentina's public healthcare system will no longer provide free medical services to foreign nationals. It is therefore essential that you obtain appropriate insurance before your departure.*

## Chile

Australian passport holders visiting Chile for tourism purposes or transit between 8 to 72 hours must apply for a single or multiple tourist visas. Visas must be lodged through the [SAC CIUDADANOS](#) portal only. Visa rules may have changed since COVID-19. Check with the nearest embassy, consulate or immigration department of the destination you're entering. Please start arranging your visa at least 3 weeks prior to departure to account for any delays due to consulate operating hours.

### Important:

- *Please start arranging your visa three weeks before departure to account for any delays due to consulate operating hours.*
- *Visa rules are subject to change. Please check with the nearest embassy, consulate or immigration department of the destination/s you are visiting once you receive your travel documentation to ensure you have the most up to date information.*
- *It is your responsibility to be travel-ready and ensure that you are aware and comply with any destination or travel requirements, including the validity of all required travel documents.*
- *Passengers who are not Australian citizens must also check with the respective consulate or visa agency to determine what their visa requirements are and what personal identification is required.*
- *It is also important to note that some areas of employment, such as journalism, government authorities and charity organisations, may have additional restrictions in applying for visas. This may, in turn, affect the type of application required.*

## Travel Insurance

Embarking on your next trip is exciting, and while you hope the unexpected does not happen, it is best to be prepared. We strongly recommend you take out travel insurance when making your booking. Whether it's a potential medical emergency, a flight cancellation, a delayed



# Important Information

suitcase, or an unforeseen event, it's important to ensure you're adequately protected. For more information or advice visit <https://www.tripadeal.com.au/travel-insurance>

## Schedule Of Fees

### Voluntary Changes

This includes booking changes requested by you, including but not limited to those changes requiring an airline ticket or a Purchase Confirmation reissue.

- Changes - \$100 per booking and any additional charges applied by the airline/cruise company/accommodation/other travel providers.

### Name Changes Due To Passenger Error

If the incorrect name has been provided, charges of \$100 per booking and any additional charges applied by the airline/cruise company/accommodation/other travel providers.

### Supplier Fees

In the event the tour package you have purchased is unable to proceed, and/or a Travel Supplier is unable to fulfil the tour due to external circumstances (Limitation of Liability e.g. a Force Majeure event), there may be a fee or amount of money that is withheld by our Suppliers and is unrecoverable. This may be due to non-refundable airline tickets, cancellation penalties with cruise cabins or unrecoverable payments with our land/accommodation partners. If refunds are not available from Suppliers, we will endeavour to obtain a travel credit on the best terms available and communicate these outcomes to you. In the event we are unable to obtain a refund or travel service credit, or part thereof, this cost is passed on to the customer as a Supplier Fee.