



Ultra Luxury Antarctica from New Zealand

NEW ZEALAND • ANTARCTICA

The Offer

Embark on the ultimate polar odyssey, a 27-day journey to the magnificent Ross Sea region of Antarctica aboard the ultra-luxury Scenic Eclipse II Discovery Yacht. Your adventure begins with a Business-Class flight to Christchurch, New Zealand, allowing you to relax and settle into the charming city before your expedition commences.

After 2 nights in Christchurch, you'll be transferred to Timaru, where the sleek Scenic Eclipse II awaits, ready to deliver an unparalleled discovery experience. Settle into your spacious verandah suite and meet your dedicated butler as you prepare to sail into the vast Southern Ocean. Days at sea are filled with enriching lectures from the specialist polar Discovery Team, covering fascinating insights into Antarctica's geology, wildlife, and exploration history, all brought to life in the ship's state-of-the-art theatre. When you're not out on an adventure, enjoy the vessel's complimentary spa facilities, including salt therapy lounges, steam rooms, saunas, ice showers, a mineralised vitality pool, and infrared sauna seats, all ready to pamper you. You can also stay active with a fully equipped gym,

daily yoga and Pilates classes in a dedicated studio. Facials, massages and other treatments are also available at an extra charge.

As the first icebergs appear, the anticipation builds for the awe-inspiring Ross Sea. Here, you'll delve into the heart of Antarctic exploration, walking in the footsteps of legends like Shackleton and Scott and marvelling at the active Mount Erebus. Depending on ice and weather conditions, you'll have the opportunity to explore by Zodiac, kayak, or stand-up paddleboard, seeking out thriving penguin colonies, seals and whales. For a truly unique perspective, optional helicopter excursions (at an additional cost) offer breathtaking aerial views of this pristine wilderness, including the otherworldly McMurdo Dry Valleys.

Cruise along the colossal Ross Ice Shelf, witness the incredible wildlife convergence of the Balleny Islands, and reflect on the importance of conservation aboard your Discovery Yacht, designed for minimal environmental impact. Your extraordinary voyage concludes back in Timaru, where you can choose from a selection of Scenic Freechoice activities to delve deeper into New Zealand's South Island charm before your business class flight home.

Offer available for a limited time or until sold out. TRIP A DEAL PTY LTD: 50149240433

Updated: 02 Jul 2025 10:35:35

Have a question about this deal? We're here to help.
Call our friendly team on 1300 158 912



NEW ZEALAND • ANTARCTICA

The Offer

This is a once-in-a-lifetime expedition to the Earth's last great wilderness, leaving you with memories to cherish forever.

This unforgettable adventure includes return international Business Class flights, a 23-night cruise aboard the ultra-luxury discovery yacht Scenic Eclipse II; 3 nights of 5-star accommodation in Christchurch, New Zealand; and 71 meals, including daily breakfast and all meals while cruising; plus more!

Want more? Upgrade your flights to First Class with Emirates departing from Sydney.

Offer available for a limited time or until sold out. TRIP A DEAL PTY LTD: 50149240433

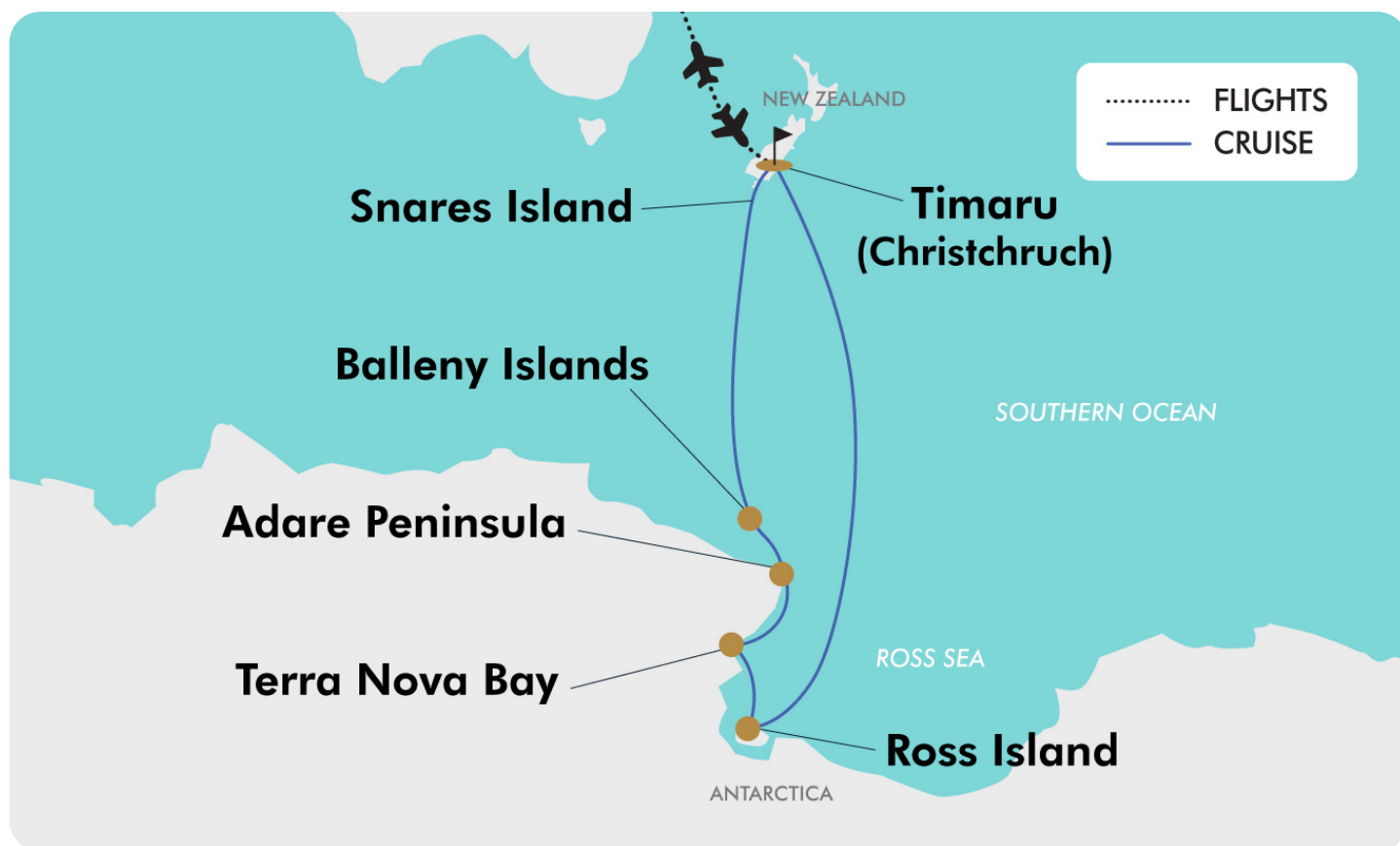
Updated: 02 Jul 2025 10:35:35

Have a question about this deal? We're here to help.
Call our friendly team on 1300 158 912



27-DAY CRUISE PACKAGE | ULTRA LUXURY ANTARCTICA FROM NEW ZEALAND

The Map



Offer available for a limited time or until sold out. TRIP A DEAL PTY LTD: 50149240433

Updated: 02 Jul 2025 10:35:35

Have a question about this deal? We're here to help.
Call our friendly team on 1300 158 912





27-DAY CRUISE PACKAGE | ULTRA LUXURY ANTARCTICA FROM NEW ZEALAND

The Itinerary

Day 1 Business Class Flight to Christchurch, New Zealand

Today, fly business class from Australia to Christchurch, New Zealand. Upon arrival, meet your driver and transfer to your hotel. Enjoy the rest of your day at leisure.

Overnight: The Mayfair or similar, Christchurch

Meals included: In-Flight

Day 2 Christchurch, New Zealand

Enjoy a day at leisure in Christchurch. Christchurch, with its English charm and vibrant energy, is the gateway to the natural beauty of New Zealand's South Island. Rebuilt after the 2011 earthquakes, the city now flourishes with elegant new architecture, striking street art, and a thriving culinary scene. Framed by the Canterbury Plains, extinct volcanoes, and alpine peaks, the region offers easy access to snow-capped mountains, the thermal pools of Hanmer Springs, and the coastal haven of Akaroa, home to rare Hector's dolphins. Christchurch's resilient spirit and warm hospitality make it a compelling starting point for your journey.

Overnight: The Mayfair or similar, Christchurch

Meals included: Breakfast

Day 3 Begin 23-night Voyage to Antarctica, Timaru (Christchurch), New Zealand

Today, you will be transferred by coach to Timaru, where your ultra-luxury Discovery Yacht awaits. At the appropriate time, meet at the designated pick-up area in central Christchurch. The journey to Timaru will take approximately 3 hours. Nestled along New Zealand's stunning South Island coast, Timaru welcomes you with its blend of natural beauty and rich heritage. The Captain and crew will warmly greet you as you board Scenic Eclipse II. Settle into your spacious verandah suite, meet your butler, and acquaint yourself with the world-class facilities of your Discovery Yacht. Then head to the Scenic Lounge Bar to meet your fellow guests and toast the start of your voyage as you sail away from New Zealand.

Overnight: Scenic Eclipse II - Ultra-luxury Discovery Yacht

Meals included: Breakfast; Dinner

Day 4 Cruising

The vast Southern Ocean stretches ahead, marking the beginning of your immersive journey. Today, meet the specialist polar Discovery Team, a group of world-renowned experts who will bring Antarctica to life through their deep knowledge of geology, glaciology, wildlife, and exploration history. Join an introductory presentation in the state-of-the-art theatre, where your Discovery Leader will unveil the wonders of the White Continent, setting the stage for the awe-inspiring days ahead.

Due to the extraordinary nature of the region, Scenic Discovery excursions throughout your Expedition Voyage are dependent on the ice and weather conditions. Your experienced Captain and



27-DAY CRUISE PACKAGE | ULTRA LUXURY ANTARCTICA FROM NEW ZEALAND

The Itinerary

specialist polar Discovery Team will use their expertise to adapt the itinerary and maximise your exploration opportunities in this spectacular destination.

Overnight: Scenic Eclipse II - Ultra-luxury Discovery Yacht
Meals included: Breakfast; Lunch; Dinner

Day 5 Cruising

A day to relax, recharge, and deepen your knowledge of Antarctica's incredible ecosystems. Start your morning with an invigorating yoga or Pilates class, followed by a relaxing soak in the Vitality pool. Or, savour a barista-made coffee from your suite while gazing at the vast Southern Ocean. The Observation Lounge, with its Swarovski telescopes and floor-to-ceiling windows, is the perfect place to spot sea birds, dolphins, and other marine life. Enjoy enrichment lectures from your Discovery Team, who will continue to unveil the secrets of Antarctica's marine biodiversity, glaciology, and the region's rich history.

Discovery: Take advantage of the insightful lectures from the Discovery Team, covering topics such as marine life, seabirds, polar history, ice formations, and Antarctica's unique ecosystem. Out on the Observation Deck, the Bridge or from your private verandah, keep an eye out for wandering albatross, petrels, and even the occasional whale as you sail south.

Overnight: Scenic Eclipse II - Ultra-luxury Discovery Yacht
Meals included: Breakfast; Lunch; Dinner

Day 6 Cruising

As you continue south, the Discovery Team will host another series of expert-led lectures, covering Antarctica's unique wildlife, ice formations, and early explorers' daring expeditions. When you're visiting some of the world's most fragile ecosystems, we have a commitment to protect them for future generations. Take advantage of the open bridge policy to meet with the Captain and his team to learn about Scenic Eclipse II's state-of-the-art technology and sustainable systems designed to protect fragile ecosystems, leaving as small a footprint as possible.

Later, choose one of up to 10 dining experiences from a casual lunch at Azure Bar & Café to an elegant dinner at Elements.

Discovery: Immerse yourself in the wonders of Antarctica with engaging talks from the Discovery Team, exploring subjects like the region's diverse wildlife, glacial landscapes, polar exploration, and the delicate ecosystem of the White Continent. As you sail south, step onto the deck or relax on your private verandah to spot soaring albatross, gliding petrels, and perhaps even a whale breaking the surface.

Overnight: Scenic Eclipse II - Ultra-luxury Discovery Yacht
Meals included: Breakfast; Lunch; Dinner





27-DAY CRUISE PACKAGE | ULTRA LUXURY ANTARCTICA FROM NEW ZEALAND

The Itinerary

Day 7 Cruising

Your Discovery Yacht's advanced cinemascope theatre comes to life with immersive presentations from the Discovery Team, each revealing the secrets of Antarctica's ever-changing landscapes, diverse wildlife, and climate systems. Spot wandering albatross, giant petrels, and perhaps even pods of dolphins or whales from the Observation Lounge or your private verandah. Spend the day at your own pace, perhaps indulging in a rejuvenating ESPA facial at Senses Spa#, reading a book in the Observation Lounge, or simply gazing out over the endless ice-blue horizon.

This evening, whether you opt for contemporary French cuisine at Lumière or the fresh Sushi @ Koko's, tonight is a celebration of the journey so far.

Discovery: Engage with the Discovery Team's insightful lectures, delving into topics like marine wildlife, seabirds, polar history, and the fascinating ice formations of Antarctica. Whether from the deck or the comfort of your private verandah, stay on the lookout for majestic albatross, graceful petrels, and the occasional whale as you journey south.

Overnight: Scenic Eclipse II - Ultra-luxury Discovery Yacht
Meals included: Breakfast; Lunch; Dinner

Day 8 Cruising

A moment of anticipation approaches as the first icebergs appear on the horizon. Today, prepare for your Antarctic landings with a final expedition briefing, ensuring you're ready for Zodiac operations, wildlife etiquette, and safety protocols. The Discovery Team will host interactive discussions, helping you understand the unique wildlife and ecosystems of Antarctica. Along with tips to keep your camera ready, as penguins, seals, or even whales may make an appearance

Discovery: The Discovery Team will share fascinating insights into this rarely explored region, preparing you for the wonders ahead. Keep watch from the deck or your private verandah, you may catch sight of soaring seabirds or even a whale marking your passage into these legendary waters.

Overnight: Scenic Eclipse II - Ultra-luxury Discovery Yacht
Meals included: Breakfast; Lunch; Dinner

Day 9 Antarctica's Ross Sea Region

Be sure to stay close to your verandah as you enter the Ross Sea. The pristine, iceberg-rich ocean is popular among orcas, seals, penguins and whales. This rugged and remarkable body of water is surrounded by sky-scraping mountains and carved by glacial ice tongues, vast ice shelves and drifting sea ice. Your Captain and Discovery Leader will seek out the safest opportunities for you to explore the area.

Over the next few days on Ross Island, at the base of Mount Erebus, you'll have the opportunity to walk in the footsteps of legendary explorers like Ernest Shackleton and Robert Falcon Scott.



27-DAY CRUISE PACKAGE | ULTRA LUXURY ANTARCTICA FROM NEW ZEALAND

The Itinerary

Discovery: Today, you may have the opportunity to explore this fascinating landscape on the fleet of Zodiacs, kayaks, stand-up paddleboards, and guided and self-paced hikes. Alternatively, you may be able to add to your experience with a flight on one of the two on-board helicopters (charges apply).

Overnight: Scenic Eclipse II - Ultra-luxury Discovery Yacht
Meals included: Breakfast; Lunch; Dinner

Day 10 Antarctica's Ross Sea Region

Weather and ice conditions permitting, we will arrive at Beaufort Island, a remote and rugged volcanic outpost rising dramatically from the icy waters of the Ross Sea. Located on the edge of the Ross Ice Shelf, this isolated sanctuary is home to a thriving Adélie penguin colony, as well as skuas and other seabirds. Its towering cliffs and icy shores create a breathtaking landscape, offering a rare glimpse into Antarctica's untouched wilderness.

Discovery: You may have the opportunity to explore this fascinating landscape on the fleet of Zodiacs, kayaks, and stand-up paddleboards. Alternatively, conditions permitting, you may experience an exclusive flightseeing excursion on one of the two on-board helicopters (charges apply), offering breathtaking aerial views of the Antarctic wilderness.

Overnight: Scenic Eclipse II - Ultra-luxury Discovery Yacht
Meals included: Breakfast; Lunch; Dinner

Day 11 Antarctica's Ross Sea Region

Few sights in Antarctica are as dramatic as Mount Erebus, the southernmost active volcano on Earth. Sit down with your expert polar Discovery Team in the state-of-the-art theatre to learn why Sir James Clark Ross and Sir Ernest Shackleton came here on their polar expeditions, and how they built their huts.

Throughout the day, keep an eye out for Adélie penguins. Cape Bird is home to one of the region's largest colonies, where these charming birds nest along its rugged, rocky shores. Further south, Cape Royds blends history and wildlife. It's home to Shackleton's well-preserved 1908 Nimrod expedition hut.

Discovery: Another exciting opportunity to soar over the breathtaking landscape with flightseeing on one of the two on-board helicopters (charges apply).

Alternatively, you may explore this fascinating landscape and spot Ross Sea wildlife on the fleet of Zodiacs, kayaks, stand-up paddleboarding~, guided and self-paced hikes. Your expert Discovery Team may take you on enlightening excursions to the historic explorers' huts.

Overnight: Scenic Eclipse II - Ultra-luxury Discovery Yacht
Meals included: Breakfast; Lunch; Dinner



27-DAY CRUISE PACKAGE | ULTRA LUXURY ANTARCTICA FROM NEW ZEALAND

The Itinerary

Day 12 Antarctica's Ross Sea Region

Today, weather and conditions permitting, step into the world of Antarctic exploration as you navigate toward Cape Evans. This is home to one of the most important historical sites on the continent, Robert Falcon Scott's Terra Nova Hut, the base for his legendary 1911–1913 expedition to the South Pole. You will land via Zodiac directly at Cape Evans, where you will have the rare opportunity to walk through Scott's Hut, preserved much as it was over a century ago.

This is one of Antarctica's most moving and well-preserved monuments to human endurance and ambition. Back on board, join your Discovery Team historians for a fascinating lecture on the rivalry between Scott, Amundsen, and Shackleton, deepening your appreciation for the sheer determination it took to survive in this formidable landscape.

Discovery: Depending on weather and ice conditions, you may have the chance to explore this remarkable landscape in a variety of ways. Take to the water on a Zodiac cruise through icy waters in a kayak or stand-up paddleboard~, or, for a truly unique perspective, soar above the frozen expanse by adding an exclusive flightseeing excursion by helicopter (charges apply). Your expert Discovery Team may take you on enlightening excursions to the historic explorers' huts.

Overnight: Scenic Eclipse II - Ultra-luxury Discovery Yacht
Meals included: Breakfast; Lunch; Dinner

Day 13 Antarctica's Ross Sea Region

Today, if conditions allow, prepare for one of the most exclusive experiences in the world—a helicopter flight over the McMurdo Dry Valleys (charges apply). A stark, otherworldly landscape, the Dry Valleys are one of the driest places on Earth. The only way to glimpse this dramatic landscape is by adding an optional excursion on one of Scenic Eclipse II's helicopters – weather permitting, your pilot may even land on this end-of-the-Earth landscape.

For those staying on board, the day offers enriching experiences—from wildlife spotting in the Observation Lounge to deep-dive lectures on the region's pioneering research stations. Alternatively, embark on a Zodiac cruise across pristine Antarctic waters on a kayak or stand-up paddleboard. Keep an eye out for orcas and Emperor penguins while your Discovery Team shares fascinating insights into the region's history.

Overnight: Scenic Eclipse II - Ultra-luxury Discovery Yacht
Meals included: Breakfast; Lunch; Dinner

Day 14 Ross Sea Ice Shelf (Scenic Cruising)

Experience the edge of the world as you cruise along the Ross Ice Shelf, the largest floating ice mass on the planet. Towering up to 50 metres above sea level, this frozen fortress is one of the most spectacular sights in Antarctica. As the day unfolds, your Captain and Discovery Leader will seek out the best opportunities for exploration - perhaps a Zodiac cruise alongside the towering ice cliffs or wildlife encounters with Weddell seals resting on the frozen landscape.





27-DAY CRUISE PACKAGE | ULTRA LUXURY ANTARCTICA FROM NEW ZEALAND

The Itinerary

Discovery: Depending on conditions, you may have the opportunity to fly on one of the two on board helicopters (charges apply) to the Ross Sea Ice Shelf. On this unforgettable optional flightseeing excursion, see the spectacular ice shelf from above and possibly land on it. Or explore this fascinating landscape on the fleet of Zodiacs, kayaks, stand-up paddleboards~, guided and self-paced hikes.

Overnight: Scenic Eclipse II - Ultra-luxury Discovery Yacht
Meals included: Breakfast; Lunch; Dinner

Day 15 Antarctica's Ross Sea Region

Today, you may visit one of Antarctica's most poignant historical sites, Inexpressible Island, where six men from Robert Falcon Scott's Terra Nova Expedition (1910-1913) spent an unthinkable winter, stranded with almost no supplies. Your Discovery Team historians will bring their story to life, recounting tales of sheer resilience and determination that remain among the most incredible feats in polar history. Beyond its historical significance, Inexpressible Island is also a haven for wildlife. Adélie penguins thrive here, and the surrounding waters are often frequented by Weddell and crabeater seals. If conditions allow, you may explore the dramatic coastline by Zodiac. Back on board, consider unwinding at the Senses Spa, indulging in a soothing treatment to reflect on the unforgettable experiences of the past days.

Discovery: Today, you may have the opportunity to explore this fascinating landscape on the fleet of Zodiacs, by Kayak or stand-up paddleboarding. You might also have the opportunity to experience this incredible landscape from the air by taking an exclusive helicopter flight (charges apply)

Overnight: Scenic Eclipse II - Ultra-luxury Discovery Yacht
Meals included: Breakfast; Lunch; Dinner

Day 16 Antarctica's Ross Sea Region

All jagged cliffs and ink-black escarpments backed by the towering Admiralty Mountains, the Adare Peninsula is a dramatic postcard. Much of the spectacle comes from the 250,000 breeding pairs of Adélie penguins – the largest colony in Antarctica – that call the region home. This place has drawn avid explorers for centuries. It was the site of the first documented Antarctic landing on the continent in 1895. Norwegian explorer Carsten Borchgrevink's two 1899 huts remain on land. Sip a hot beverage in the Observation Lounge, where you can read books and play board games in between wildlife watching. In the evening, up to 10 world-class dining experiences await.

Discovery: Weather and conditions permitting, you may have the opportunity to explore the hut remains with your Discovery Team. Or explore this fascinating landscape on the fleet of Zodiacs, kayaks, stand-up paddleboards~, guided and self-paced hikes.

Overnight: Scenic Eclipse II - Ultra-luxury Discovery Yacht
Meals included: Breakfast; Lunch; Dinner

Offer available for a limited time or until sold out. TRIP A DEAL PTY LTD: 50149240433

Updated: 02 Jul 2025 10:35:35

Have a question about this deal? We're here to help.
 Call our friendly team on 1300 158 912



27-DAY CRUISE PACKAGE | ULTRA LUXURY ANTARCTICA FROM NEW ZEALAND

The Itinerary

Day 17 Antarctica's Ross Sea Region

At the northernmost point of the Ross Sea, the Adare Peninsula is a striking landscape of sheer cliffs, black volcanic rock, and vast glaciers that spill into the frigid waters below. Shaped by powerful geological forces, this remote peninsula marks the site where Antarctica's tectonic plates meet, creating a unique and rugged terrain. This region has long fascinated scientists and explorers alike. The peninsula is a key site for studying ancient lava flows, providing insight into Antarctica's volcanic past. It is also a haven for wildlife, with vast colonies of Adélie penguins and nesting seabirds, while Weddell and crabeater seals haul out along the ice-lined shores.

Discovery: If conditions allow, explore the peninsula's dramatic coastline on a Zodiac cruise past towering ice formations on a kayak or stand-up paddleboard~, or embark on a guided or self-paced hike. For a truly breathtaking perspective, take to the skies on an optional flightseeing excursion on board one of Scenic Eclipse II's two helicopters (charges apply).

Overnight: Scenic Eclipse II - Ultra-luxury Discovery Yacht
Meals included: Breakfast; Lunch; Dinner

Day 18 Cruising

Sea days aboard your Discovery Yacht offer a perfect opportunity to unwind, connect with fellow guests and dive into the background of this captivating part of the world. The Discovery Team will deliver engaging talks and presentations on the local wildlife and history. Alternatively, step into the tranquil Senses Spa on Deck 6 with its steam rooms, saunas, Salt Therapy Lounge and Vitality Thermal Lounge. Stop for a coffee or a cocktail at one of the eight bars and lounges on board or curl up in the library of the Observation Lounge.

Overnight: Scenic Eclipse II - Ultra-luxury Discovery Yacht
Meals included: Breakfast; Lunch; Dinner

Day 19 Balleny Islands

This 160-kilometre-long chain of volcanic islands, some of them still active, straddles the Antarctic Circle. Here, you will have a front-row seat to one of the greatest convergences of wildlife in the world. Humpbacks, fin and minke whales may put on a show while we are nearby, breaching, blowing, and slapping their tails. Crabeater, Weddell, Ross Sea Seals and leopard seals loll about, sunbaking between swims. Join a Discovery Excursion or just take in the view from the Observation Deck or your private verandah.

Discovery: Daily experiences may include cruising on Zodiacs, stepping ashore to view vast penguin rookeries, kayaking or stand-up paddleboarding~ around icebergs. Wherever your voyage takes you, you will have countless "pinch me" moments.

Overnight: Scenic Eclipse II - Ultra-luxury Discovery Yacht
Meals included: Breakfast; Lunch; Dinner

Offer available for a limited time or until sold out. TRIP A DEAL PTY LTD: 50149240433

Updated: 02 Jul 2025 10:35:35

Have a question about this deal? We're here to help.
Call our friendly team on 1300 158 912



27-DAY CRUISE PACKAGE | ULTRA LUXURY ANTARCTICA FROM NEW ZEALAND

The Itinerary

Day 20 Cruising

As you sail away from East Antarctica's Ross Sea toward Snares Island, take in the ever-changing seascape and reflect on the incredible experiences of the past days. The Discovery Team will continue to enhance your journey with engaging enrichment lectures, offering deeper insights into Antarctica's ecosystems, climate, and the pioneering explorers who braved these waters.

Keep your binoculars ready, as this stretch of ocean is home to wandering albatross, petrels, and possibly even pods of whales making their way through these remote waters. From the Observation Lounge or your private verandah, watch as the vast Antarctic ice fades into the open Southern Ocean, knowing that new wildlife encounters await at Snares Island.

Overnight: Scenic Eclipse II - Ultra-luxury Discovery Yacht
Meals included: Breakfast; Lunch; Dinner

Day 21 Cruising

As you sail through one of the world's most fragile and pristine environments, take a moment to reflect on the importance of conservation. Scenic Eclipse II is designed to navigate this extreme region with the utmost care, equipped with world-class technology that minimises environmental impact. Take advantage of the open bridge policy, where you can meet the Captain and crew to gain insight into the innovative sustainable systems that make this voyage possible. Tonight, could be the night you enjoy contemporary French fine dining at Lumière with your new friends. Stay up late in the bar or retire to the Observation Lounge library for a moment of blissful solitude before bed.

Overnight: Scenic Eclipse II - Ultra-luxury Discovery Yacht
Meals included: Breakfast; Lunch; Dinner

Day 22 Cruising

With days of expeditionary experiences behind you, today is the perfect opportunity to expand your knowledge of Antarctica's wildlife, glaciology, and history. The state-of-the-art theatre will host a series of engaging talks from the Discovery Team offering deeper insight into this fascinating region. Immerse yourself in a cinema-like experience, where advanced cinemascope technology and a 270-degree viewing screen bring the Antarctic wilderness to life in stunning detail. As the evening unfolds, enjoy a performance in the theatre or retreat to your suite with a nightcap in hand, savouring the quiet luxury of your Discovery Yacht.

Overnight: Scenic Eclipse II - Ultra-luxury Discovery Yacht
Meals included: Breakfast; Lunch; Dinner

Day 23 Snares Island

Remote, rugged, and richly protected, the Snares are the closest Subantarctic Islands to New Zealand, so pristine they remain completely uninhabited. This remarkable wildlife sanctuary, consisting of two main islands and the five-island Western Chain, enjoys the highest level of conservation protection.

Discovery: While landings are not permitted, join the Discovery Team on a Zodiac cruise along the sheltered eastern coast, weather and sea conditions permitting. Keep your eyes peeled for the endemic Snares Crested Penguin, Snares Island Tomtit, and elusive Fernbirds. The islands also host a staggering number of nesting Sooty Shearwaters.

Offer available for a limited time or until sold out. TRIP A DEAL PTY LTD: 50149240433

Updated: 02 Jul 2025 10:35:35

Have a question about this deal? We're here to help.
Call our friendly team on 1300 158 912



27-DAY CRUISE PACKAGE | ULTRA LUXURY ANTARCTICA FROM NEW ZEALAND

The Itinerary

Overnight: Scenic Eclipse II - Ultra-luxury Discovery Yacht
Meals included: Breakfast; Lunch; Dinner

Day 24 Cruising

On your final day at sea, take the time to reflect on the unforgettable experiences of the past few weeks. Perhaps spend the morning organising your photos or adding the finishing touches to your travel journal. Indulge in one moment of relaxation at Senses Spa#, booking an ESPA facial or an alternative therapy, such as an Ayurvedic massage or Japanese Shiatsu. As the evening draws near, raise a glass in the Scenic Lounge Bar, toasting to an extraordinary journey.

Overnight: Scenic Eclipse II - Ultra-luxury Discovery Yacht
Meals included: Breakfast; Lunch; Dinner

Day 25 Timaru, New Zealand

Timaru welcomes you with stunning ocean views, golden beaches, and rich heritage. Step ashore and explore Timaru's unique blend of heritage and modern charm. Stroll along the Bay Hill promenade, where stunning ocean views meet inviting cafés and boutique shops. Delve into the region's past at the South Canterbury Museum, showcasing Maori artifacts and early settler history. For art lovers, the Aigantighe Art Gallery offers an inspiring collection of local and international works. Join one of the Scenic Freechoice activities planned for this stop and experience the best of Kiwi charm.

Freechoice: Mt. Cook and Lake Tekapo: Experience a breathtaking trip from Timaru through Mackenzie Country, stopping at the turquoise Lake Tekapo and iconic Church of the Good Shepherd, then Lake Pukaki and majestic Mount Cook,

with a buffet lunch and insights at the Sir Edmund Hillary Alpine Centre. Erewhon Sheep Station and Clydesdales: Uncover Canterbury's high country at Erewhon Station, a 35,000-acre treasure beneath the Southern Alps.

From Timaru, traverse the Canterbury Plains, stopping at Lake Clearwater and Edoras for photos, then experience Merino sheep-shearing, Hereford cattle, deer, and a Clydesdales wagon ride, before enjoying a mountain picnic lunch.

Oamaru and the Moeraki Boulders: Uncover Oamaru's historic charm, the mysterious Moeraki Boulders, and Dot's Castle (Riverstone Castle), with lunch at the renowned Riverstone Kitchen featuring local flavours amidst its picturesque, serene setting. Town and Coastal Discovery Walk: Stroll Timaru's waterfront from the wharf to Caroline Bay, admire ocean and mountain views, visit Benvenue Cliffs, and explore Te Ana Maori Rock Art with morning tea on Bay Hill.

Overnight: Scenic Eclipse II - Ultra-luxury Discovery Yacht
Meals included: Breakfast; Lunch; Dinner

Day 26 Disembark Voyage - Timaru (Christchurch), New Zealand

Your voyage ends in Timaru, a charming port town known for its stunning coastal landscapes and warm Kiwi hospitality. After one luxurious breakfast, it's time to bid farewell to your new friends and crew, taking memories to a lifetime. Once off the ship you will transfer by coach from Timaru to Christchurch. Enjoy the rest of the day at leisure.

Overnight: The Mayfair or similar, Christchurch
Meals included: Breakfast

Offer available for a limited time or until sold out. TRIP A DEAL PTY LTD: 50149240433

Updated: 02 Jul 2025 10:35:35

Have a question about this deal? We're here to help.
 Call our friendly team on 1300 158 912



27-DAY CRUISE PACKAGE | ULTRA LUXURY ANTARCTICA FROM NEW ZEALAND

The Itinerary

Day 27 Christchurch, New Zealand - Australia

Today, at the appropriate time, meet your driver and transfer to the airport for your business class flight home.

Meals included: Breakfast; In-Flight



27-DAY CRUISE PACKAGE | ULTRA LUXURY ANTARCTICA FROM NEW ZEALAND

Tour Inclusions

HIGHLIGHTS

Follow in the footsteps of some of the world's greatest explorers when you set sail to Antarctica's Ross Sea

Experience ultimate luxury aboard Scenic Eclipse II, a discovery yacht that only accommodates up to 200 passengers

Witness breathtaking scenery and encounter abundant wildlife as you explore East Antarctica

Visit Beaufort Island, Mount Erebus, McMurdo Dry Valleys, Ross Ice Shelf, Adare Peninsula and more during your voyage

Enjoy world-class, attentive service with a close to 1:1

Immerse yourself in the comprehensive program, including guided Zodiac, kayak and stand-up paddleboard Discovery Excursions

Seize the rare opportunity to walk through explorer Robert Falcon Scott's Hut, preserved much as it was from his legendary expedition over a century ago

Spot thriving colonies of Adélie & Snares Crested Penguin, Weddell and crabeater seals, orcas, humpback, fin and minke whales and other diverse species

Gain deep insights from your Discovery Team of up to 20 polar experts

Complimentary expedition parka and water bottle, plus use of special polar boots included

Choose from a selection of 'Freechoice' excursions to alpine lakes, sheep stations, and historic sites in Timaru

Enjoy time at leisure in Christchurch, New Zealand, before and after your voyage

Please note: *Medical clearance is required prior to boarding for all expedition cruises to Antarctica.

FLIGHTS

Return international Business Class flights between Australia & Christchurch, surcharges may apply.

CRUISE

23-night cruise aboard an Ultra-Luxury Discovery Yacht, Scenic Eclipse II

Spacious all-verandah suites with personalised butler service for every guest

Swarovski Telescopes in the Observation Lounge and in-suite binoculars

Daily entertainment in the state-of-the-art theatre and Scenic Lounge

Engaging onboard lecture and education program

Indulgent 550sqm Senses Spa facilities, gym, yoga and Pilates studio and Vitality pools (charges may apply)

All tipping on board and onshore, and complimentary Wi-Fi

ACCOMMODATION

3 nights of 5-star accommodation in Christchurch, New Zealand

DINING

71 meals, including daily breakfast & all meals while cruising

Up to 10 dining experiences onboard Scenic Eclipse II, from casual to fine dining

Up to 8 bars and lounges onboard Scenic Eclipse II

The finest selection of included beverages, all day, every day, while cruising, with a choice of over 130 whiskeys at the Scenic Lounge Bar

ESSENTIALS

English-speaking Discovery Team of up to 20 polar experts

Airline taxes and surcharges

Port taxes and surcharges



27-DAY CRUISE PACKAGE | ULTRA LUXURY ANTARCTICA FROM NEW ZEALAND

Tour Inclusions

TRANSPORT

Transportation by private air-conditioned vehicles

TRANSFERS

Day 1: Airport to Hotel

Day 3: Hotel to Port

Day 26: Port to Hotel

Day 27: Hotel to Airport

Offer available for a limited time or until sold out. TRIP A DEAL PTY LTD: 50149240433

Updated: 02 Jul 2025 10:35:35

Have a question about this deal? We're here to help.
Call our friendly team on 1300 158 912

15

FREQUENT
FLYER



Trip
aDeal

Important Information

**Please note: All information provided in this brochure is subject to both change and availability. Prior to purchase please check the current deal for up-to-date information. If you have already purchased this deal, the terms and conditions on your Purchase Confirmation apply and take precedence over the information in this brochure.*

Booking Information

After purchase, you will receive a receipt and a Purchase Confirmation, directing you to an online Passenger Information Form. You must complete the Passenger Information Form within 72 hours of purchase.

Any special requests, preferences and optional extras MUST be clearly stated in your Passenger Information Form. Any change requested after submitting your Passenger Information Form cannot be guaranteed, is strictly subject to availability and will incur surcharges as outlined in the Schedule of Fees below.

Please note: All countries and territories have different entry requirements in relation to vaccinations, quarantine/isolation periods and travel restrictions. Due to the evolving nature, we would ask all of our customers to monitor, meet and adhere to the specific requirements of their intended destination(s) in the lead-up to and immediately before travel, as well as any requirements post-travel upon their return.

Our Policies

Cancellation & Refund Policy

By placing a booking with us, you acknowledge the following important information:

- **we act as your booking agent ;**

TripADeal is a booking services provider, and curates the Travel Offers available on our website. We act as your booking agent, and we receive payment for the Booking Services as part of the booking price, however, we do not provide any of the Travel Services (flights, accommodation, tours or other products or services) included in your booking – the Travel Services are provided by a number of third party Travel Suppliers.

- **each booking is unique ;** our Travel Offers are made up of a variety of different components and are, during the booking process, uniquely tailored to suit your requirements, for example, departure dates and ports, flight and room upgrades, tour inclusions, etc.

- **changes/modifications to your booking may not be possible ;** once your booking has been made, changes or modifications may not be possible, and where possible, may incur a fee. It is important to ensure that the information you provide during the booking process is accurate and up to date, and that you read the Travel Offer carefully before placing your order.

- **Travel Offers are a package ;** our Travel Offers have been curated into package offerings and must be used as a package – individual components cannot be used independently of the full package offering.

- **our Travel Offers are generally non-refundable ;** in order to provide great value Travel Offers, we work with a variety of Travel Suppliers to find the best deals – this often means the Travel Suppliers' offerings are non-refundable to ensure the best price. We recommend that you obtain travel insurance as soon as you make a booking with us.

To read more about our Cancellation and Refund Policy, please click [here](#).

General Terms & Conditions

By placing your booking with us, you acknowledge and agree to our [Terms & Conditions](#), [Privacy Policy](#) and [Cancellation Policy](#).

Offer Essentials

This Travel Offer is valid for travel on selected dates until the 27th January 2026.

This Travel Offer is priced per person based on a twin share.

Departure Dates & Surcharges

See checkout for live dates and availability.

Single Traveller Supplement

This offer is based on twin-share accommodation only. Unfortunately, it is not available for solo travellers at this time.

Child Policy

- No child discounts are offered. The full price applies to all children travelling with their parents.
- Valid for children 16 years old and over.

Please note: Children must be accompanied by a responsible adult 21 years old and over to travel. No unaccompanied minors are allowed.

Flights

Departure Cities

Sydney, *Melbourne, Brisbane, *Adelaide, *Perth

Departure City Surcharges

Melbourne: \$300 per person
Adelaide: \$1000 per person
Perth: \$1300 per person

International Flight(s)

Full-Service Airline(s) Used

- Cabin Class: Business Class

Please note: We cannot accommodate one-way flights. Travellers must take all included flights within the package, and any flights intentionally forfeited will result in later flights being subject to cancellation.

Preferred Airline Surcharge

- Not available

Arrive Early and Stay Behind Options

Arrive Early

Christchurch, New Zealand - From \$1000 per person, subject to availability.

Stay Behind

Christchurch, New Zealand - From \$1000 per person, subject to availability.

Please note:

- *This fee does not include extra nights' accommodation, meals or airport transfers.*

Important Information

- *Flight booking changes or cancellations after air tickets have been issued are not guaranteed and may incur additional fees and fare difference, subject to the airline cancellation and change policies.*
- *Flight changes are subject to availability at the time of booking.*
- *A high-season Arrive Early or Stay Behind can be purchased for an additional charge, subject to availability. For pricing, please refer to the cart.*
- *You can arrive early, up to 60 days before your package's start date, and/or stay behind until 60 days after your package's end date. Should you wish to arrive earlier or stay behind for more than 60 days, please contact us to request availability. Additional costs may apply.*
- *High season surcharges apply to flights departing between the below date ranges:*
 - *16th June 2025 - 20th July 2025*
 - *15th September 2025 - 12th October 2025*
 - *1st December 2025 - 19th December 2025*
 - *20th December 2025 - 4th January 2026*
 - *5th January 2026 - 31st January 2026*
 - *3rd April 2026 - 20th April 2026*
 - *26th June 2026 - 17th July 2026*
 - *18th September 2026 - 9th October 2026*
 - *12th December 2026 - 18th December 2026*
 - *19th December 2026 - 3rd January 2027*
 - *4th January 2027 - 26th January 2027*

Stopover Packages

* Not available

Flight Class Upgrades

First Class: For pricing, please refer to the payment cart at checkout.

Please note:

- *Flight upgrades are subject to availability and pricing changes (if we cannot fulfil your request, the upgrade cost will be refunded).*
- *On any upgrade purchase, short-haul flights and domestic flight sectors are not guaranteed, subject to aircraft configuration.*

Outbound Flights

Please note: Due to flight scheduling and availability, some departures may occur on Day 0. Affected customers must be available to depart the day before. Flight times will be indicated on your final documents, issued 4-6 weeks before departure.

Missed Flights

If you fail to arrive for your outbound flight, you risk all flight and land arrangements in your destination being automatically cancelled by the airlines and land operator, respectively. Additional fees may apply to reinstate these services. If you miss your flight for whatever reason, please contact us as soon as possible to make arrangements.

Cruise

Medical Disclaimer

Travel to Antarctica is physically demanding, and our Travel Suppliers require all guests to obtain medical clearance before departure even if you don't intend to disembark at Antarctica. This involves completing a medical form and may require medical clearance from a doctor, which could incur additional costs. Any guests who fail to provide the necessary medical documentation will be denied boarding.

Scenic 'Scenic Eclipse II' Ship:

Launched in April 2023 and officially christened on 3 June 2023 in Málaga, Spain by NASA astronaut Dr. Kathy Sullivan, Scenic Eclipse II is a state-of-the-art ultra-luxury expedition yacht and the sister ship to the original Scenic Eclipse. Designed to deliver both opulence and adventure, the vessel accommodates up to 200 guests in polar regions to meet environmental regulations—and is supported by a dedicated crew of 176, ensuring exceptional service and a high crew-to-guest ratio. Onboard, guests enjoy 114 spacious all-veranda suites, ranging from 32m² Verandah Suites to a lavish 247m² Two-Bedroom Penthouse, each featuring butler service and luxurious amenities. Spanning 168 meters in length

and with a gross tonnage of 17,545 GT, Scenic Eclipse II is spread over 10 beautifully appointed decks, housing multiple lounges, world-class dining venues, and wellness facilities that redefine expedition cruising.

Exploration Equipment

Scenic Eclipse is purpose built for Antarctica with a Polar Class 6 rating, custom-built stabilisers providing greater stability, a strengthened hull, forward bow thrusters and an electronic Azipod propulsion system. The state-of-the-art technology enables for safe and comfortable navigation through polar waters.

- **Helicopters:** Two Airbus H130-T2 helicopters equipped with air-conditioned interiors, Bose® noise-canceling headsets, and expansive visibility from every seat, allowing for flightseeing and remote landings.
- **Scenic Neptune II Submersible:** Dive below the horizon for an unforgettable experience on board our custom-designed next generation submersible[^], Scenic Neptune II. Take your seat with up to eight fellow guests alongside our expert pilot and prepare for a sightseeing experience like no other, 100 metres beneath the surface. Featuring 270-degree panoramic views, Scenic Neptune II has been designed to provide an immersive underwater experience that will give guests the feeling of seamlessly merging with the wonders of the ocean.
- **Zodiacs:** A fleet of 12 Zodiacs for close-up excursions and landings in remote areas. Keeping the guest numbers to 200 enables multiple landings each day for more in-depth exploration by Zodiac, kayak and stand-up paddleboard at these magnificent, restricted landing sites.
- **Marina Platform:** Located at the aft, used for launching water sports equipment such as kayaks, snorkeling activities, and scuba diving.

Important Information

- You will be supplied with everything you'll need to fully immerse yourself in the journeys that await. On Antarctica Expedition Voyages a Scenic Eclipse parka and water bottle will be in your suite on arrival, yours to take home. Plus, the use of specialised polar boots, trekking poles, and any kayaking equipment is included for your convenience.

Dining Experiences

Scenic Eclipse II offers up to 10 unique dining experiences, each curated by a team of over 38 chefs from 15 countries, reflecting the regions visited and catering to all dietary requirements :

- **Elements:** The main restaurant features Italian, steak, and seafood from an à la carte menu.
- **Night Market @ Koko's:** An interactive dining experience with dishes inspired by the lively markets of Asia, India, and the Middle East.
- **Sushi @ Koko's:** Offers authentic Japanese sushi in an intimate setting.
- **Chef's Table @ Elements:** An invitation-only dining experience for 10 guests, featuring a dégustation menu paired with fine wines.
- **Yacht Club:** A casual dining venue open for breakfast and lunch, offering a buffet with fresh-baked breads, pastries, salads, and hot dishes.
- **Azure Bar & Café:** Provides all-day grazing options, light snacks, and tasty treats.
- **In-Suite Dining:** Available 24/7, allowing guests to enjoy meals in the privacy of their suites.

Wellness & Leisure

- **Senses Spa:** An expansive 550m² spa featuring state-of-the-art technology, including KLAFS infrared seats, a Salt Therapy Lounge, and Therabody chairs for rejuvenation.
- **PURE:** Yoga and Pilates Studio & POWER: Gym: Dedicated spaces for fitness and wellness activities.
- **Sky Deck & Bar:** Includes a Vitality pool, cabanas, and relaxed seating, offering panoramic views.

Mobility

Participating in the offered activities on this itinerary will require good mobility, generally good health, and the ability to care for oneself in all activities of daily living. Guests should be capable of negotiating uneven and slippery terrain ashore including rocks, snow and ice. At ports of call, you will embark and disembark the ship either by using a gangway or, in ports where the ship anchors in the harbour, by small rubber landing crafts (Zodiacs). In ports where Zodiacs are used guests who participate in excursions, and landings and wish to visit tender ports of call must be able to negotiate 10-12 steep internal stairs and get in and out of small rubber landing crafts (Zodiacs) with limited assistance.

Packing List

As Antarctica is one of the most remote, rarely visited, parts of the world, knowing what to pack for your voyage isn't always easy. So, in case you're unsure what clothes to pack for a cruise to Antarctica, below is a simple cruise outfit planner.

Plan ahead

It's best to pack thoughtfully for Antarctica's climate. Unless you travel there frequently, there's no reason you'd know what clothes to bring on a cruise to Antarctica. Everyone experiences the cold (and warmth) differently, but it pays to bear in mind daily temperatures in the Antarctic Peninsula can range from well below freezing to the upper 40°F/4°C. Plus, windchill can make things feel much colder, especially as you'll be spending a lot of your time outdoors in places that are subject to strong winds.

Stay warm

When you're thinking about what clothes to take on a cruise, it's worth remembering that the outside temperature in Antarctica can feel much colder than the reading on a thermometer. So it's recommended you wrap up extra warm. Layering is a great way to do this. Wearing several lightweight, loose-fitting layers is better

than opting for one heavier layer. This is because the different layers allow for pockets of air between each item of clothing, which provides extra insulation, and it means you can remove or add layers when your body temperature changes.

Choosing clothes

A lot of the action on an expedition cruise happens outside, so dress codes are very relaxed on these voyages. Pack clothes that are comfortable and easy to wash. And it pays to consider how you're going to pack everything. For instance, do you know how to pack a cocktail dress in a suitcase? Is a cocktail dress something you'll definitely need? Some guests find it helpful to choose their clothes, then go back and edit their choices after an hour or so.

What to pack

For the polar regions you'll need casual trousers, jeans, long-sleeved t-shirts and a thin jumper or bodywarmer. You'll be cosy and comfortable when you're inside the ship, but it's always good to have warm clothes handy for when something out on deck takes your interest. Waterproof trousers, to wear over your pants or thermal underwear, are essential for Zodiac trips and land excursions. You'll need to bring a warm, windproof hat that covers your head and ears, and a collar scarf to protect your neck and chin from the elements. Polarised sunglasses will help reduce the glare from the snow and ice, protect your eyes from UV rays, and help you see the details of the Antarctic scenery better. It's also worth packing mittens, ski gloves and insulated glove liners to keep your hands warm and dry. Also, you might want to pack swimming and fitness gear if you plan to visit the spa, pool or fitness centre. Evenings are informal, but maybe pack a couple of casual shirts, and skirts or dresses for dinner, and something stylish for special occasions, such as cocktails with the Captain. When it comes to footwear, keep it light and easy to pack. Scenic will provide a pair of rubber Muck boots for Zodiac excursions and onshore landings, so a pair

Important Information

of lightweight trainers will be fine. Steer clear of bringing high-heels, especially stilettos, as the seas can get rough at times, and you'll need to keep your balance.

Expedition extras

When you travel to the polar regions, a Scenic expedition parka will be waiting for you in your stateroom on the first day of the cruise. This is yours to keep after your voyage.

Onboard currency:

USD

Cabins/Staterooms:

Deluxe Verandah Suite:

Thoughtfully designed with floor-to-ceiling sliding glass doors that open onto a private verandah or terrace. Enjoy unwinding in the separate lounge area with your choice of refreshments. Ranging in size from 32 - 34m², located on Decks 5 to 8, each suite includes:

- Lounge & Sleeping area: Your private hideaway is furnished with the finest ultra-luxury amenities, including plush king-size bed, pillow menu and a lounge area where you can relax after a day of discovery.
- Private Verandah: Admire your window to the world. These incredibly spacious and thoughtfully designed suites feature floor-to-ceiling sliding glass doors that open onto sprawling vistas, spectacular seascapes and marvellous marine life. Your private verandah or terrace is the perfect place to unwind as a new world of wonder moves by.

Amenities & Features:

- Luxury king-size Scenic Slumber Bed
- Separate sleeping zone and lounge area
- En-suite bathroom with shower and vanity
- Luxury bathroom amenities and Dyson hairdryer
- Ambient lighting options
- Personalised butler service

- A full complimentary mini-bar stocked with wines, Champagne and spirits personalised to your preference, including illy coffee and specialty teas re-stocked daily
- In-suite beverage and dining service
- HDTV entertainment system
- Advanced Heating, Ventilation and Air-Conditioning system (HVAC) provides 100% fresh air
- The highest sound insulation as per the marine class society Bureau Veritas

Grand Deluxe Verandah Suite:

Slightly larger than the Verandah Suites. Ranging in size from 38-40m², they are furnished with the finest ultra-luxury amenities. Including a plush king-size bed, a pillow menu, a walk-in wardrobe, and a lounge area to unwind in after a day of exploration.

- Lounge & Sleeping area: Your private hideaway is furnished with the finest ultra-luxury amenities, including plush king-size bed, pillow menu and a lounge area where you can relax after a day of discovery.
- Private Verandah: Admire your window to the world. These incredibly spacious and thoughtfully designed suites feature floor-to-ceiling sliding glass doors that open onto sprawling vistas, spectacular seascapes and marvellous marine life. Your private verandah or terrace is the perfect place to unwind as a new world of wonder moves by.

Amenities & Features:

- Luxury king-size Scenic Slumber Bed
- Separate sleeping zone and lounge area
- En-suite bathroom with shower and vanity
- Luxury bathroom amenities and Dyson hairdryer
- Ambient lighting options
- Personalised butler service
- A full complimentary mini-bar stocked with wines, Champagne and spirits personalised to your preference, including illy coffee and specialty teas re-stocked daily
- In-suite beverage and dining service
- HDTV entertainment system

- Advanced Heating, Ventilation and Air-Conditioning system (HVAC) provides 100% fresh air
- The highest sound insulation as per the marine class society Bureau Veritas

Spa Suite:

Imagine returning from an exhilarating day of all-inclusive excursions to your private hideaway and relaxing in your luxurious spa bath. These indulgent Spa Suites will provide the ultimate rejuvenation. Ranging in size from 46-50m², these Spa Suites are located on Decks 8 and 9.

- Lounge & sleeping area: With a premier location on the higher Decks 8 and 9 and an impressive 46-50 m² in size, our opulent Spa Suites provide the most inviting of ultra-luxury retreats. Featuring a separate sleep zone with a four-poster king-size Scenic Slumber Bed, a lounge area as well as a private verandah, they are the perfect retreat after a day of discovery.
- Luxurious spa: Step into the private sanctuary of your Spa Suite and soak in a steaming bath drawn by your butler. Gaze out over your verandah to the vistas beyond and sip on a glass of Champagne – heaven. Scenic Eclipse II offers a luxurious circular spa bath overlooking your verandah. Exclusive to these suites, the baths provide the perfect way to rejuvenate after your day of activities.
- Private verandah: Your private verandah is the perfect place to unwind. Be immersed in the tranquillity of the sea or be the first to catch sight of wildlife and breathtaking landscapes.

Amenities & Features:

- Luxury king-size Scenic Slumber Bed, separate sleeping zone and lounge area with reading chair
- A circular spa bath on Scenic Eclipse II
- A steam shower, with oversized head and soothing light therapy
- Dual vanity basins, luxurious amenities and Dyson hairdryer
- Walk-in robe

Important Information

- A full complimentary mini-bar stocked with wines, Champagnes and spirits personalised to your preference, including illy coffee and specialty teas re-stocked daily
- Personalised butler service
- Complimentary fruit selection for an afternoon snack
- Complimentary laundry service~
- Advanced Heating, Ventilation and Air-Conditioning system (HVAC) provides 100% fresh air
- The highest sound insulation as per the marine class society Bureau Veritas

Please note:

- *All cabins are subject to availability; some cabins may have restricted views.*
- *Cruise cabins are booked on a guaranteed basis and are assigned by the cruise line prior to departure.*

Cruise Arrival and Departure Times:

Please keep in mind that the provided cruise arrival and departure times are an approximate and will be finalised upon receipt of your cruise tickets.

Accommodation

Accommodation Used:

5 Star Properties (Self-Rated)

Christchurch, New Zealand: The Mayfair

Please note: Accommodation/rooms offered are based on a lead-in room type and are subject to availability based on seasonality. In the instance a property is not available, a similar standard of accommodation will be provided. Properties will be confirmed and included in your travel pack, which you will receive 4-6 weeks before travel.

Extra Nights

Not available.

Please note: If you are interested in booking additional nights of accommodation pre or post-tour, please wait until you receive your travel documentation approximately 4-6 weeks before departure for the confirmed list of hotels. If booking your own additional accommodation directly with the hotel,

please be aware that you may be required to change rooms at the start/end of your tour.

Maximum Room Capacity

2 people.

Triple Share

Not available.

Bedding Configuration

Twin or double (subject to availability).

Optional Tours/activities

- Some tours or shore excursions require minimum numbers to operate.
- Shore excursions can be booked/reserved directly with the cruise line before travel (subject to availability)
- Shore excursions can also be booked whilst onboard (subject to availability).
- Shore excursion programmes and itineraries may vary depending on local conditions and/or any unforeseen events concerning the timing on the day of the tour. Some excursions are very popular, and therefore availability cannot always be guaranteed. It is advisable to book in advance to avoid disappointment.

Exclusions

- Visa fees and requirements
- Domestic transfers and flights not stated in the deal offer
- Meals/beverages not stated in the deal offer
- Optional gratuities/tipping
- Optional activities/tours
- Personal expenses
- Travel insurance
- Any costs associated with an interruption to your tour as a result of an airline schedule change or cancellation
- Mandatory city tax

Gratuities / Tipping

Please note: Tipping for services provided is always a matter of personal discretion; however, please be aware that many locals consider tipping part of their normal remuneration, and they may approach you

for payment; there's no need to be intimidated by the request.

Cruise

While cruising aboard Scenic Eclipse II, all onboard and onshore gratuities are included in the voyage fare.

Other Important Information

TOUR GUIDE VS. TOUR LEADER

Tour Guide:

Often locals with intimate knowledge of an area, its culture, and history. Their role entails providing commentary, routing the tour, and seeing that people have a good time. They are a licensed, qualified expert who supplies specific information on the history, art, architecture and culture of the city/village/attraction where they are guiding the tour. The guide meets the group at the required place and leaves it at the end of the tour; they do not travel with the group.

Tour Leader:

An experienced person tasked with ensuring the smooth operation of tours, as well as providing practical support to passengers throughout the whole trip. Their role primarily includes assisting with accommodation, transportation between locations, and communication with tour guides at each stop. A tour leader may provide general guidance around a city or village and offer information on the place visited on the bus. However, they are not required to have specific art, architecture, or historical knowledge. They are not allowed to provide a guided tour or commentary of a city/village/attraction once there and, if caught doing so, can be fined.

Please note: Tour leaders/guides are not a standard inclusion in all travel offers. Tour leaders/guides will only be made available when required to enhance the experience of the destination featured.

CLIMATE & AVERAGE TEMPERATURES

South Island, New Zealand

In January and February, Christchurch and

Important Information

Timaru—located on New Zealand's South Island—experience warm, pleasant summer weather. Daytime temperatures typically range between 22°C and 26°C, with occasional peaks above 30°C during hot spells. Nights are mild, generally dropping to around 12°C to 15°C. These months are among the sunniest of the year, with long daylight hours and relatively low humidity, making them ideal for outdoor activities. Rainfall is moderate and infrequent, though short showers or cool southerly changes can occasionally pass through. Overall, it's a great time to visit the region, with settled and comfortable conditions.

Antarctica

In January and February, Antarctica experiences its summer season—the warmest and most accessible time of year for exploration. Temperatures along the Antarctic Peninsula typically range from -2°C to 6°C, though wind chill can make it feel colder. These months offer the most stable weather, with longer daylight hours (up to 20+ hours of light) and relatively calm seas, making conditions ideal for cruising and landings. Wildlife activity is at its peak: penguin chicks are hatching and growing, seals are often seen basking on ice floes, and whale sightings—particularly humpbacks—become increasingly common in February. While snow and ice remain, coastal areas may have exposed rock and muddy patches as the summer sun softens the landscape.

Weather

We always suggest referring to an online source for the most up-to-date weather information for your destination/s.

FLIGHTS

Seat Selection & Frequent Flyer Points:

We do not arrange seat selection. It is essential to highlight that some airlines do not allow pre-selected seats. We strongly suggest you contact the airline directly with seating allocation requirements and/or arrive at the airport earlier to arrange your seating. While we do not add frequent flyer member details to bookings,

you can do this directly with the airline once you have your flight information.

Passport Validity:

Customers must provide valid passport details either at the time of purchase or no later than 90 days before the departure date. Failure to do so may result in the cancellation of the booking. Customers will be responsible for any costs and fees incurred in this instance.

CRUISE

Embarkation / Disembarkation:

- Begins approximately 2 hours after docking.
- Due to security reasons, all guests must be on board 2 hours before sailing.
- Itineraries are subject to change at any time without notice.
- Check your specific sailing for exact departure and arrival times. All times are local to the port.

Please note: Strict Covid-19 terms may also apply regarding proof of insurance covering Covid-19 and/or vaccination. Please refer to the cruise lines' terms and conditions for further information before boarding.

Cruise Loyalty Discounts:

Please note: Travellers must contact the cruise line directly upon receiving their travel documents in order to request any membership benefits they may be entitled to.

Meals:

For meals not included, the tour leader (when available) will offer assistance with reservations, suggestions and directions to local restaurants. It is your responsibility to notify us of any dietary requests/requirements.

Please note: We will do our best to meet your requests/requirements; however, we cannot guarantee that we will always be able to.

Luggage:

You will be responsible for all your personal belongings whilst on tour. You must carry your own luggage from the vehicle to the hotel room and back to the

vehicle. The driver will assist with the uploading and unloading of bags from the vehicle.

OTHER

Mobility:

If you require wheelchair access please contact our friendly sales and service team to inquire on your behalf.

Fitness Level Required:

Adventure (and spontaneity) create some of the best travel memories. Bear in mind, your home schedules and timings might not be adhered to on tour - it's all part of the fun!

A Moderate level of fitness will be required.

Expect a moderate pace of touring with a focus on guided tours that may include full days with extended activity, guided city tours or nature walks. You will require a general level of fitness for unassisted navigation of stairs and inclines, longer distances with possible periods of standing when visiting sites, walking on sloping, uneven ground or elevations. You will be responsible for your own luggage and have the ability to board all modes of transport without assistance. Please note: Many areas may be inaccessible to wheelchairs or mobility scooters, where the unassisted use of personal walking sticks and other aids may be required. Although some assistance may be available, every traveller should be self-reliant during all aspects of their travel.

Please note: It is expected that every traveller must be self-reliant and able to undertake all aspects of their own travel. Please speak to your booking agent about your personal circumstances and any assistance requirements to ensure this tour is right for you.

Please note: If you have any concerns, please consult your healthcare provider prior to purchase/travel.

Yellow Fever:

A valid international certificate of vaccination against Yellow Fever is

Important Information

required in many countries. You may need to present this on arrival at the airport or border crossing. Some countries will refuse entry if you are unable to present your certificate. It's also common for your home country to request a Yellow Fever certificate upon arrival.

You must check with your doctor well before leaving home about the Yellow Fever requirements for the countries you'll be visiting.

Sightseeing:

Please note: If entry to a site is affected by changes in operating hours or public holiday closures, your itinerary, where possible, may be adjusted, or a similar activity will be offered in its place (subject to availability).

Shopping:

Shopping overseas can be a daunting and confusing experience, especially when there is a language barrier. Please be very cautious when foreign currencies and prices are involved. If paying by credit card, please pay close attention to the amount you are being charged and keep all your receipts.

Do not make any purchases you are not comfortable with or feel pressured into. If you are uncertain or need assistance with the language barrier, please seek assistance from your Tour Guide/Leader. Please refer to our [Terms and Conditions](#) regarding shopping for further information.

Visas

New Zealand

All travellers to New Zealand are required to complete a traveller declaration 24 hours prior to arrival in New Zealand. The traveller declaration can be completed [here](#).

Australian passport holders do not require a visa for travel to New Zealand; however must hold a passport valid on arrival.

Important:

- *Please start arranging your visa three weeks before departure to account for any delays due to consulate operating hours.*

- *Visa rules are subject to change. Please check with the nearest embassy, consulate or immigration department of the destination/s you are visiting once you receive your travel documentation to ensure you have the most up to date information.*
- *It is your responsibility to be travel-ready and ensure that you are aware and comply with any destination or travel requirements, including the validity of all required travel documents.*
- *Passengers who are not Australian citizens must also check with the respective consulate or visa agency to determine what their visa requirements are and what personal identification is required.*
- *It is also important to note that some areas of employment, such as journalism, government authorities and charity organisations, may have additional restrictions in applying for visas. This may, in turn, affect the type of application required.*

Travel Insurance

Embarking on your next trip is exciting, and while you hope the unexpected does not happen, it is best to be prepared. We strongly recommend you take out travel insurance when making your booking. Whether it's a potential medical emergency, a flight cancellation, a delayed suitcase, or an unforeseen event, it's important to ensure you're adequately protected. For more information or advice visit <https://www.tripadeal.com.au/travel-insurance>

Schedule Of Fees

Voluntary Changes

This includes booking changes requested by you, including but not limited to those changes requiring an airline ticket or a Purchase Confirmation reissue.

- Changes - \$100 per booking and any additional charges applied by the airline/cruise company/accommodation/other travel providers.

Name Changes Due To Passenger Error

- If the incorrect name has been provided, charges of \$100 per booking and any additional charges applied by the airline/cruise company/accommodation/other travel providers.

Supplier Fees

In the event the tour package you have purchased is unable to proceed, and/or a Travel Supplier is unable to fulfil the tour due to external circumstances (Limitation of Liability e.g. a Force Majeure event), there may be a fee or amount of money that is withheld by our Suppliers and is unrecoverable. This may be due to non-refundable airline tickets, cancellation penalties with cruise cabins or unrecoverable payments with our land/accommodation partners. If refunds are not available from Suppliers, we will endeavour to obtain a travel credit on the best terms available and communicate these outcomes to you. In the event we are unable to obtain a refund or travel service credit, or part thereof, this cost is passed on to the customer as a Supplier Fee.