



# South Korea Discovery

SEOUL ● JEONJU ● BUSAN

## The Offer

Set course for adventure on a 9-day discovery tour of South Korea. Immerse yourself in a culture that leads the way in technology and pop culture, while honouring its ancient traditions.

Travel to the bustling capital city of Seoul, ideal for foodies and culture enthusiasts. Take a full-day tour of the city's highlights including the iconic Gyeongbokgung Palace and traditional Hanok Village. Catch the Royal Guard Changing Ceremony, browse the Dongdaemun Open Market and more. Head to the popular village of Jeonju, famous for its Korean food and historic buildings. Try your hand at making traditional mulberry paper before touring Jeonju Hanok Village.

Journey to laid-back Busan where Busan Tower and Yongdusan Dragon Head Park awaits. Visit Korea's largest seafood market, head to Haedong Yonggungsa Temple and explore Gamcheon Culture Village. Enjoy a day at leisure to feast on local food, enjoy a scenic walk or relax on the beaches. Travel back to Seoul on the KTX bullet train, reaching speeds of up to 320 km/hr.

Get your next Asian adventure sorted with return international Jetstar flights including luggage and meals, 7 nights of centrally-located 3 and 4-star hotel accommodation, daily breakfast and more.

**Want more? Book an optional tour of the Korean Demilitarized Zone, a unique and historic site that offers insight into the country's history.**

Offer available for a limited time or until sold out. TRIP A DEAL PTY LTD: 50149240433

Updated: 18 Jun 2026 12:43:37

Have a question about this deal? We're here to help.  
Call our friendly team on [1300 158 912](tel:1300158912)

1

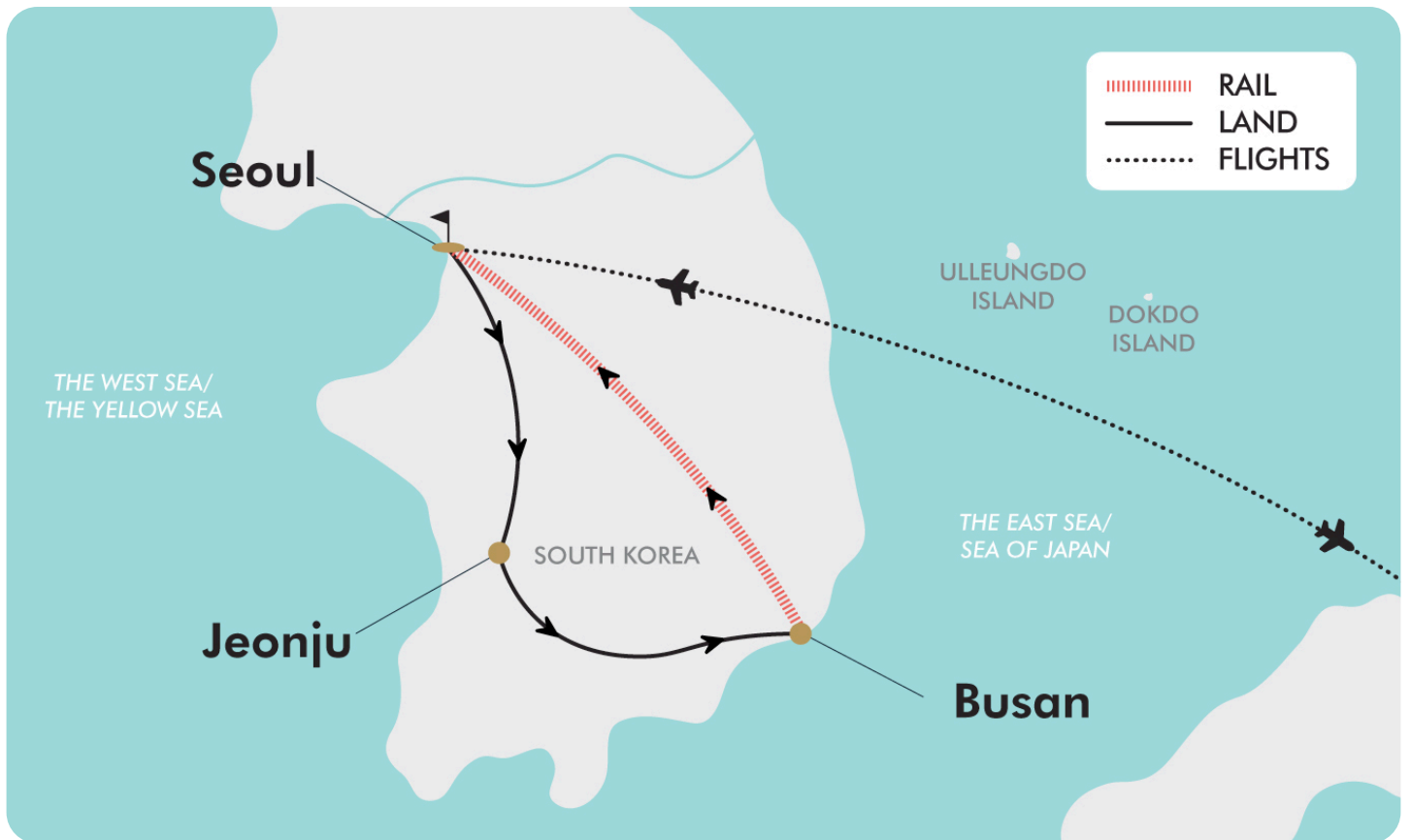
FREQUENT  
FLYER 





**9-DAY TOUR PACKAGE | SOUTH KOREA DISCOVERY**

**The Map**



Offer available for a limited time or until sold out. TRIP A DEAL PTY LTD: 50149240433

Updated: 18 Jun 2026 12:43:37

Have a question about this deal? We're here to help.  
Call our friendly team on 1300 158 912



## 9-DAY TOUR PACKAGE | SOUTH KOREA DISCOVERY

### The Itinerary

#### Day 1 Australia - Incheon (Seoul), South Korea

Today, you'll depart for Seoul, South Korea. Arrive into Incheon Airport late this evening before being met and transferred to a nearby airport hotel so you can sleep in before the following days activities in Seoul.

**Please note:**

- If travelling from Brisbane or Sydney, you will fly direct to Incheon (Seoul) with Jetstar Airways.
- If you are flying from Melbourne, you will fly via Sydney or Brisbane with Jetstar Airways.
- Jetstar flights include check in baggage allowance and on international sectors you will receive inflight entertainment and 1 meal.

**Overnight:** Incheon Sky & Sea Hotel, Incheon

**Meals included:** In-Flight

#### Day 2 Seoul City Tour

This morning, your Seoul city tour commences at the magnificent Gyeongbokgung Palace. This will give you a glimpse into the architectural heritage of the Joseon Dynasty which spanned over 500 years. Following this, you will visit the National Folk Museum to gain insights into Korea's distinctive culture and traditional way of life. The tour continues with a brief stop to observe the Traditional Royal Guard Changing Ceremony and the Presidential Blue House.

Your next destination is the renowned Bukchon Hanok Village, a historic Korean village nestled on a hilltop between Gyeongbokgung Palace, Changdeok Palace and Jongmyo Royal Shrine. This village, with its network of alleys and well-preserved

hanoks (traditional Korean houses), showcases a 600-year-old urban landscape. Enjoy a guided walk through this charming area, admiring the exquisite traditional architecture.

The day concludes with leisure time at the vibrant Dongdaemun Open Market, one of the largest markets in Asia. This expansive commercial district surrounding Dongdaemun Gate encompasses numerous traditional markets and shopping centres, making it Korea's largest wholesale and retail shopping hub with approximately 26 shopping malls, 30,000 specialty shops, and 50,000 manufacturers.

At the end of the day, you will check into your Seoul hotel accommodation. It's located in Insadong, the heart of the city and one of the cultural and artistic hubs of Seoul. There is one main road in Insadong with alleys on each side. Within these alleys are galleries, traditional restaurants, teahouses and cafes. The galleries are the heartbeat of Insadong, offering traditional Korean fine art including paintings and sculptures. The teahouses and restaurants are hidden deep within the twisting alleyways, making it feel like a treasure hunt. The shops in Insadong are very popular among all age groups providing a unique experience for every taste.

**Please note:**

- Gyeongbokgung Palace and the National Folk Museum as they are closed every Tuesday. Alternatively, you will visit Changdeokgung Palace instead.



## 9-DAY TOUR PACKAGE | SOUTH KOREA DISCOVERY

### The Itinerary

- *Due to recent local government regulations aimed at protecting resident privacy and maintaining order, Bukchon Hanok Village has been temporarily closed for groups. If the village is closed for your tour, an alternative visit to Namsangol Hanok Village will be provided in place of this*

**Overnight: Ibis Ambassador Hotel or similar, Insadong, Seoul**  
**Meals included: Breakfast**

#### Day 3 Seoul Free Day

Today is free at leisure to explore Seoul or take part in an optional activity.

#### Optional Activity: Korean DMZ (Demilitarised Zone) Tour

Nowhere is the tension between North and South Korea more palpable than in the no-man's-land known as the Korean Demilitarised Zone, or DMZ. Located on each side of the 38th parallel, this infamous border was established at the end of the war in 1953 at the signing of Panmunjom's armistice in order to separate North and South Korea.

This morning, you'll head towards the North Korean border where you'll ride the gondola for a bird eye view of the Demilitarised Zone. You'll then visit Dokgae Bridge which symbolises the pains of war and separation. The skywalk experience is divided into the past, present and future. Proceed to Bunker Beat 131, a military underground bunker constructed during the Korean War that's been turned into a unique exhibition space.

Afterwards, you'll head through passport security control and visit the Odusan Unification Observatory (closed every Monday), which is on the South Korean Side of the 38th parallel. After

receiving a brief and listening to the precautions, you can watch a 3D film about the war, and then see the North Korean people working in the villages. The tower gives a view of North Korea at a glance and is a special place to experience the division of a nation and the life of North Korean people. Using binoculars, you can see the North Korean territory from the 304 square feet, 500-person capacity observatory.

You will then visit Imjingak Resort which boasts various war-related artefacts as well as the spacious Pyeonghwa Nuri Park. The resort preserves the Freedom Bridge and Imjingang rail bridge from the Korean War to remind people of the past. It also features a memorial hall, memorial monuments, the Bell of Unification Last Train Out, The Bridge of No Return and other recreational areas. Please see current pricing in Important Information.

#### *Please note:*

- *This tour requires a minimum of 10 travellers to operate.*
- *You must bring your passport for ID at the DMZ.*
- *Due to many DMZ sites and tours not operating on Mondays, Day 2 and 3 will be swapped should this day fall on Monday.*
- *The tour may be cancelled without notice in case of an emergency military meeting or other critical situation.*

**Overnight: Ibis Ambassador Hotel or similar, Insadong, Seoul**  
**Meals included: Breakfast**



## 9-DAY TOUR PACKAGE | SOUTH KOREA DISCOVERY

### The Itinerary

#### Day 4 Seoul - Jeonju

Today, you'll head to the popular village of Jeonju. This is an important tourist centre that's famous for its Korean food and historic traditional buildings. In May 2012, Jeonju was chosen as a Creative City for Gastronomy as part of UNESCO's Creative Cities Network. This honour recognises the city's traditional homecooking (handed down through generations over thousands of years), its active public and private food research, its system for nurturing talented chefs and its hosting of distinctive local food festivals.

First up, you'll visit Hanji Industry Centre. As Korea's first centre specialising in traditional mulberry paper, it has an extensive collection of 3,000 artefacts and a database documenting the long history and superiority of Hanji (Korean paper). Additionally, you will have the opportunity to try make Korean paper with wooden tools and take it home.

Afterwards, you'll take a tour of Jeonju Hanok Village. This is the Korea's largest, and only urban, traditional hanok village. It's best known for its traditional wooden houses, sake museums and food stalls.

Finish the day at the hotel where you can enjoy the remainder of the day at leisure after travelling approximately 190-kilometres. Alternatively, join an optional dining experience.

Optional Activity: Traditional Jeonju Bibimbap Dinner

Please see current pricing in Important Information.

**Overnight: Best Western Plus Jeonju Hotel or similar, Jeonju**

**Meals included: Breakfast**

#### Day 5 Jeonju - Busan

This morning, you will depart early for Busan.

Upon arrival, your first stop is Yongdusan Park, aptly named for the mountain's resemblance to a dragon's head rising from the sea. Within the park, you'll find the 120-meter-high Busan Tower. For those interested in ascending to the top, tickets are available for direct purchase (approximately \$10 USD per person). You'll see breathtaking panoramic views of the city including the surrounding islands and ships scattered across the distant sea.

Afterwards, you'll visit Jagalchi Fish Market, Korea's largest seafood market and a popular must-see destination for visitors in Busan. You'll then head to Haedong Yonggungsa Temple, uniquely situated along the northeastern coastline of Busan. This remarkable attraction provides the rare experience of a beautiful temple by the sea, contrasting with the more common mountain temple locations in Korea.

Following this, you will explore Gamcheon Culture Village, a distinctive community formed by houses built in a terraced style on the foothills of a coastal mountain. You'll find that the village's numerous alleys are vividly adorned with murals and sculptures created by its residents.

Check-in at your hotel and enjoy the remainder of the day at your leisure after an approximately 190-kilometre day.

**Overnight: Asti Hotel or similar, Busan**

**Meals included: Breakfast**

#### Day 6 Busan Free Day

Today is a free day at leisure to explore the beautiful city of Busan. Alternatively, take part in a full-day Busan city tour.



## 9-DAY TOUR PACKAGE | SOUTH KOREA DISCOVERY

### The Itinerary

#### Optional Activity: Full-Day Busan Sightseeing tour

This morning, you'll visit the charming coastal village of Huinnyeoul Culture Village, located on the sloping cliff of Yeongdo. In December 2011, the old houses of the area were remodelled and the area was reborn as a unique culture and art village where you can walk through to visit the numerous cafes and galleries while enjoying the sweeping views of Busan and the ocean.

Afterwards, visit Songdo Beach where you'll board the famous cable car to ride over the bay. Enjoy views through the transparent floor of the cable car before stopping at the Sky Harbor Observatory Platform which offers beautiful views of the Songdo Sea. Return to Songdo Beach and take a short walk along the 365-metre-long Songdo Cloud Walk which features sections of clear glass floor that creates the feeling of walking on top of the ocean. You'll then visit the Nurimaru APEC House, built to host the 2005 APEC Summit meeting at the tip of Dongbaek Island which stands near Haeundae Beach. This eye-catching glass building has been one of Busan's symbolic places ever since.

Finally, you'll visit the UN Memorial Cemetery after driving over the 7.4-kilometre Gwangandaegyo Bridge, the longest bi-level bridge over the ocean in Korea. On the way back to the hotel, you'll visit Nampodong International Market. Each alleyway is crowded with stalls and connects to Bupyeong Market, Kkangtong Market and other smaller markets. The market stocks such a wide variety of goods that you can find almost everything you need. Please see current pricing in Important Information.

#### *Please note:*

- *A minimum of 10 travellers is required.*

- *No sportswear, revealing clothing or strapless slippers are to be worn at the UN Memorial Cemetery.*
- *Those who want more time at the market will need to make their own way back to the hotel (approximately 10-15 minute taxi).*

**Overnight: Asti Hotel or similar, Busan**

**Meals included: Breakfast**

#### **Day 7 Busan - Seoul (High Speed Train Experience)**

This morning, a tour assistant will meet you at your hotel and take you to the nearby Busan KTX Rail Station for your journey back to Seoul. The KTX (bullet) train significantly decreased the time to travel anywhere in South Korea. Your 325-kilometre journey will only take approximately 2 and a half hours, as the KTX trains operate at a speed of up to 320 km/hr.

Upon arrival in Seoul, you'll be met and transferred back to your centrally-located Insadong accommodation. Along the way, you will visit an Amethyst factory to learn about South Korean Amethyst as it was once a symbol of wealth in olden times. Check-in will be from 15:00 although luggage storage will be available at reception if arriving earlier.

**Overnight: Ibis Ambassador Hotel or similar, Insadong, Seoul**

**Meals included: Breakfast**

#### **Day 8 Seoul, South Korea - Australia**

Today, you will be transferred to the airport for your return flight home. Your flight does not depart until the evening (subject to change), so you will be able to explore Seoul with some more at leisure before transferring to the airport in the early evening.

#### *Please note:*



## 9-DAY TOUR PACKAGE | SOUTH KOREA DISCOVERY

### The Itinerary

- *Standard checkout time is 11:00 although luggage storage will be available at reception before transferring to the airport.*
- *If you are travelling to Brisbane or Sydney, your flight will be direct.*
- *If you are travelling to Melbourne, you will fly home via Sydney or Brisbane.*

**Meals included: Breakfast**

**Day 9 Arrive Australia**

Offer available for a limited time or until sold out. TRIP A DEAL PTY LTD: 50149240433

Updated: 18 Jun 2026 12:43:37

Have a question about this deal? We're here to help.  
Call our friendly team on 1300 158 912

7

FREQUENT  
FLYER 



## 9-DAY TOUR PACKAGE | SOUTH KOREA DISCOVERY

### Tour Inclusions

#### HIGHLIGHTS

Experience the highlights of Seoul, Jeonju and Busan

Stay in Insadong, one of the cultural and artistic hubs of Seoul

See Gyeongbokgung Palace, the National Folk Museum and Dongdaemun market on a full-day tour of Seoul

Marvel at the houses in a traditional Hanok Village

Visit Jeonju, famous for its traditional food and traditional buildings

Make your own traditional Mulberry paper paper at Hanji Museum

Uncover the various traditional cultural facilities at Jeonju Hanok Village

Enjoy sightseeing in Busan, the hub of Asia

Visit the Jagalchi Fish Market, the largest fish market in Korea

Admire Haedong Yonggungsa Temple, a beautiful temple set on the waters edge

Walk through the Instagram-famous Gamcheon Culture Villages

See colourful houses built on the foothills of a coastal mountain

Travel up to 320km/h on the KTX high-speed train between Busan and Seoul

#### FLIGHTS

Return international Jetstar flights (economy class), departure city surcharges may apply

Direct from Brisbane or Sydney, or indirect from Melbourne

#### ACCOMMODATION

7 nights of 3 to 4-star centrally-located hotel accommodation

#### DINING

Daily breakfast

#### ESSENTIALS

English-speaking tour leader

Airline taxes and surcharges

#### TRANSPORT

Transportation by private air-conditioned vehicles

#### TRANSFERS

Return airport transfers

Offer available for a limited time or until sold out. TRIP A DEAL PTY LTD: 50149240433

Updated: 18 Jun 2026 12:43:37

Have a question about this deal? We're here to help.  
Call our friendly team on 1300 158 912

# Important Information

*\*Please note: All information provided in this brochure is subject to both change and availability. Prior to purchase please check the current deal for up-to-date information. If you have already purchased this deal, the terms and conditions on your Purchase Confirmation apply and take precedence over the information in this brochure.*

## Booking Information

After purchase, you will receive a receipt and a Purchase Confirmation, directing you to an online Passenger Information Form. You must complete the Passenger Information Form within 72 hours of purchase.

Any special requests, preferences and optional extras MUST be clearly stated in your Passenger Information Form. Any change requested after submitting your Passenger Information Form cannot be guaranteed, is strictly subject to availability and will incur surcharges as outlined in the Schedule of Fees below.

*Please note: All countries and territories have different entry requirements in relation to vaccinations, quarantine/isolation periods and travel restrictions. Due to the evolving nature, we would ask all of our customers to monitor, meet and adhere to the specific requirements of their intended destination(s) in the lead-up to and immediately before travel, as well as any requirements post-travel upon their return.*

## Our Policies

### Cancellation & Refund Policy

By placing a booking with us, you acknowledge the following important information:

- **we act as your booking agent** ; TripADeal is a booking services provider, and curates the Travel Offers available on our website. We act as your booking agent, and we receive payment for the Booking Services as part of the booking price, however, we do not provide any of the Travel Services (flights, accommodation, tours or other products or services) included in your booking – the Travel Services are provided by a number of third party Travel Suppliers.

- **each booking is unique** ; our Travel Offers are made up of a variety of different components and are, during the booking process, uniquely tailored to suit your requirements, for example, departure dates and ports, flight and room upgrades, tour inclusions, etc.
- **changes/modifications to your booking may not be possible** ; once your booking has been made, changes or modifications may not be possible, and where possible, may incur a fee. It is important to ensure that the information you provide during the booking process is accurate and up to date, and that you read the Travel Offer carefully before placing your order.
- **Travel Offers are a package** ; our Travel Offers have been curated into package offerings and must be used as a package – individual components cannot be used independently of the full package offering.
- **our Travel Offers are generally non-refundable** ; in order to provide great value Travel Offers, we work with a variety of Travel Suppliers to find the best deals – this often means the Travel Suppliers' offerings are non-refundable to ensure the best price. We recommend that you obtain travel insurance as soon as you make a booking with us. If your plans change, you can receive a full refund (excluding credit card fees) if you cancel at least 12 months in advance to your scheduled departure date.

To read more about our Cancellation and Refund Policy, please [click here](#).

### General Terms & Conditions

By placing your booking with us, you acknowledge and agree to our [Terms & Conditions](#), [Privacy Policy](#) and [Cancellation Policy](#).

## Offer Essentials

This Travel Offer is valid for travel on selected dates until the 23 December 2027.

Minimum group size 20, maximum group size 36 per vehicle.

This travel offer is priced per person based

on a twin share.

### Departure Dates & Surcharges

See checkout for live dates and availability.

### Single Traveller Supplement

For solo travellers, a mandatory single supplement of \$570 applies.

*Please note: Accommodation for single customers who are travelling on a tour or cruise package may be in a single room, depending on availability.*

### Child Policy

- No child discounts are offered. The full price applies to all children travelling with their parents.
- Valid for children 8 years old and over.

*Please note: Children must be accompanied by a responsible adult 18 years old and over to travel. No unaccompanied minors are allowed.*

## Flights

### Departure Cities

Sydney, Brisbane or \*Melbourne

*Please note: Flights from both Sydney and Brisbane will be direct to Incheon (Seoul), while Melbourne departures will fly via Sydney or Brisbane before flying onwards to Incheon (Seoul).*

### Departure City Surcharges

Melbourne: \$300 per person

### International Flight(s)

- Cabin Class: Economy Class
- Airlines: Jetstar Airways (subject to availability).

*Please note:*

- *Jetstar flights includes baggage, standard seat selection, and 1 x meal for the Australia to Seoul international sectors.*

# Important Information

- *If you're on a long-haul international flight, Jetstar normally offer two meal services. Your fare includes one meal (or in-flight voucher) and you can choose whether you'd like your meal served on the first or second service. However, you might like more than one meal during your flight, you can easily pre-purchase additional meals and snacks at your own expense.*
- *We cannot accommodate one-way flights. Travellers must take all included flights within the package, and any flights intentionally forfeited will result in later flights being subject to cancellation.*

*Please note: From Sydney or Brisbane, the flying journey to your destination may take up to 11 hours and the flight will be direct.*

From Melbourne, the flying journey to your destination may take up to 18 hours, with up to 1 stop. This is provided as a guide only - actual flight duration can vary depending on availability and airline schedules. Your booking's final details will be confirmed to you via email once available.

## Baggage Allowance Per Person

- 1 x 20kg of checked baggage
- 1 x 7kg of carry on baggage

## Group Flights

*Please note: Any flights used on this deal may be booked as part of a group ticket. Group tickets do not allow for any customisations including upgrades, seat selection or paid seating options. Any customisations would need to be requested at the airport upon check-in.*

## Arrive Early & Stay Behind

Unavailable

## Flight Class Upgrades

Unavailable

## Stopover Packages

Unavailable

## Missed Flights

If you fail to arrive for your outbound flight, you risk all flight and land

arrangements in your destination being automatically cancelled by the airlines and land operator, respectively. Additional fees may apply to reinstate these services. If you miss your flight for whatever reason, please contact us as soon as possible to make arrangements.

## Accommodation

### Accommodation Used

#### 3 & 4-Star Properties (Self-Rated)

- Incheon Airport: Incheon Sea & Sky Hotel or similar
- Seoul: Ibis Ambassador Hotel or similar
- Jeonju: Best Western Plus Jeonju Hotel or similar, Jeonju
- Busan: Asti Hotel or similar

*Please note: Accommodation/rooms offered are based on a lead-in room type and are subject to availability based on seasonality. In the instance a property is not available, a similar standard of accommodation will be provided. Properties will be confirmed and included in your travel pack, which you will receive 4-6 weeks before travel.*

### Extra Nights

Not available.

*Please note: If you are interested in booking additional nights of accommodation pre or post-tour, please wait until you receive your travel documentation approximately 4-6 weeks before departure for the confirmed list of hotels. If booking your own additional accommodation directly with the hotel, please be aware that you may be required to change rooms at the start/end of your tour.*

### Maximum Room Capacity

2 people.

### Triple Share

Not available.

### Bedding Configuration

Twin or double (subject to availability).

## Optional Tours/activities

- Day 3: Korean DMZ (Demilitarised Zone) Tour - \$100 AUD per person (minimum 10 travellers required to operate)
- Day 4: Bibimbap Dinner in Jeonju - \$25 AUD per person
- Day 6: Full-Day Busan Sightseeing Tour - \$125 AUD per person (minimum of 10 travellers required to operate)

*Please note:*

- *Prices are based per person, are subject to availability, time permitting and weather conditions*
- *The optional tours listed above must be purchased on checkout or over the phone before submitting your passenger information form (subject to availability).*
- *Some tours or shore excursions require minimum numbers to operate.*

## Exclusions

- Visa fees and requirements
- Domestic transfers and flights not stated in the deal offer
- Meals/beverages not stated in the deal offer
- Recommended gratuities/tipping
- Optional activities/tours
- Personal expenses
- Travel insurance
- Any costs associated with an interruption to your tour as a result of an airline schedule change or cancellation

## Gratuities/tipping

### Land

Gratuities (tips) are not included for the services of the tour leader (when available) and driver throughout the tour. The recommended tip is the equivalent of \$10 AUD per person per day in local currency where touring and/or transfer services are provided. This covers the guide/leader and the driver and will be collected on tour.

*Please note: Tipping for services provided is always a matter of personal discretion; however, please be aware that many locals consider tipping part of their normal remuneration, and they may approach you for payment; there's no need to be intimidated by the request.*

# Important Information

## Other Important Information

### TOUR GUIDE VS. TOUR LEADER

#### Tour Guide

Often locals with intimate knowledge of an area, its culture, and history. Their role entails providing commentary, routing the tour, and seeing that people have a good time. They are a licensed, qualified expert who supplies specific information on the history, art, architecture and culture of the city/village/attraction where they are guiding the tour. The guide meets the group at the required place and leaves it at the end of the tour; they do not travel with the group.

#### Tour Leader

An experienced person tasked with ensuring the smooth operation of tours, as well as providing practical support to passengers throughout the whole trip. Their role primarily includes assisting with accommodation, transportation between locations, and communication with tour guides at each stop. A tour leader may provide general guidance around a city or village and offer information on the place visited on the bus. However, they are not required to have specific art, architecture, or historical knowledge. They are not allowed to provide a guided tour or commentary of a city/village/attraction once there and, if caught doing so, can be fined.

*Please note: Tour leaders/guides are not a standard inclusion in all travel offers. Tour leaders/guides will only be made available when required to enhance the experience of the destination featured.*

### CLIMATE & AVERAGE TEMPERATURES

#### Seoul

##### Winter (February)

Coldest period, relatively dry with snow possible.  
Average temperature around -2°C.  
Average daily minimum -3°C, average daily maximum 5°C.

##### Spring (March - May)

Temperatures rise steadily, pleasant and mild by May. Rainfall increases through the season.

March: Average temperature around 6°C.  
Average daily minimum 2°C, average daily maximum 11°C.

April: Average temperature around 13°C.  
Average daily minimum 8°C, average daily maximum 18°C.

May: Average temperature around 18°C.  
Average daily minimum 14°C, average daily maximum 24°C.

##### Summer (June - August)

Hot and humid with the monsoon season.

June: Average temperature around 23°C.  
Average daily minimum 19°C, average daily maximum 28°C. Rainfall increases.

July: Average temperature around 25°C.  
Average daily minimum 22°C, average daily maximum 29°C. Wettest month.

August: Average temperature around 26°C. Average daily minimum 23°C, average daily maximum 30°C. Still high rainfall.

##### Autumn (September - November)

Mild and dry with colourful foliage.

September: Average temperature around 22°C. Average daily minimum 18°C, average daily maximum 26°C. Rainfall decreases.

October: Average temperature around 15°C. Average daily minimum 11°C, average daily maximum 20°C. One of the driest months with the most sunshine.

November: Average temperature around 8°C. Average daily minimum 4°C, average daily maximum 12°C. Temperatures cool down.

#### Weather

We always suggest referring to an online source for the most up-to-date weather information for your destination/s.

#### FLIGHTS

#### Seat Selection & Frequent Flyer Points

We do not arrange seat selection. It is essential to highlight that some airlines do not allow pre-selected seats. We strongly suggest you contact the airline directly

with seating allocation requirements and/or arrive at the airport earlier to arrange your seating. While we do not add frequent flyer member details to bookings, you can do this directly with the airline once you have your flight information.

#### Passport Validity

Customers must provide valid passport details either at the time of purchase or no later than 45 days before the departure date. Failure to do so may result in the cancellation of the booking. Customers will be responsible for any costs and fees incurred in this instance.

#### COACH TOUR

#### Meals

For meals not included, the tour leader (when available) will offer assistance with reservations, suggestions and directions to local restaurants. It is your responsibility to notify us of any dietary requests/requirements.

*Please note: We will do our best to meet your requests/requirements; however, we cannot guarantee that we will always be able to.*

#### Luggage

You will be responsible for all your personal belongings whilst on tour. You must carry your own luggage from the vehicle to the hotel room and back to the vehicle. The driver will assist with the uploading and unloading of bags from the vehicle.

#### OTHER

#### Mobility

If you require wheelchair access please contact our friendly sales and service team to inquire on your behalf.

#### Fitness Level Required

Adventure (and spontaneity) create some of the best travel memories. Bear in mind, your home schedules and timings might not be adhered to on tour - it's all part of the fun!

A moderate level of fitness will be required. Expect a moderate pace of

# Important Information

touring with a focus on guided tours that may include full days with extended activity, guided city tours or nature walks. You will require a general level of fitness for unassisted navigation of stairs and inclines, longer distances with possible periods of standing when visiting sites, walking on sloping, uneven ground or elevations. You will be responsible for your own luggage and have the ability to board all modes of transport without assistance.

**Please note:**

- *Many areas may be inaccessible to wheelchairs or mobility scooters, where the unassisted use of personal walking sticks and other aids may be required. Although some assistance may be available, every traveller should be self-reliant during all aspects of their travel.*
- *It is expected that every traveller must be self-reliant and able to undertake all aspects of their own travel. Please speak to your booking agent about your personal circumstances and any assistance requirements to ensure this tour is right for you.*
- *If you have any concerns, please consult your healthcare provider prior to purchase/travel.*

## Sightseeing

*Please note: If entry to a site is affected by changes in operating hours or public holiday closures, your itinerary, where possible, may be adjusted, or a similar activity will be offered in its place (subject to availability).*

## Shopping

Shopping overseas can be a daunting and confusing experience, especially when there is a language barrier. Please be very cautious when foreign currencies and prices are involved. If paying by credit card, please pay close attention to the amount you are being charged and keep all your receipts. Do not make any purchases you are not comfortable with or feel pressured into. If you are uncertain or need assistance with the language barrier, please seek assistance from your Tour Guide/Leader. Please refer to our [Terms](#)

[and Conditions](#) regarding shopping for further information.

## Visas

Australian passport holders can visit as tourists for stays of up to 90 days without applying for a K-ETA (or visa waiver). The South Korean Government has announced that Australian passport holders will remain exempt from applying for a K-ETA until 31 December 2026.

While you don't need a visa or a K-ETA, you do need to complete a digital arrival card. See the official government portal at [www.e-arrivalcard.go.kr](http://www.e-arrivalcard.go.kr).

**Important:**

- *Please start arranging your visa three weeks before departure to account for any delays due to consulate operating hours.*
- *Visa rules are subject to change. Please check with the nearest embassy, consulate or immigration department of the destination/s you are visiting once you receive your travel documentation to ensure you have the most up to date information.*
- *It is your responsibility to be travel-ready and ensure that you are aware and comply with any destination or travel requirements, including the validity of all required travel documents.*
- *Passengers who are not Australian citizens must also check with the respective consulate or visa agency to determine what their visa requirements are and what personal identification is required.*
- *It is also important to note that some areas of employment, such as journalism, government authorities and charity organisations, may have additional restrictions in applying for visas. This may, in turn, affect the type of application required.*

## Travel Insurance

Embarking on your next trip is exciting, and while you hope the unexpected does not happen, it is best to be prepared. We strongly recommend you take out travel insurance when making your booking.

Whether it's a potential medical emergency, a flight cancellation, a delayed suitcase, or an unforeseen event, it's important to ensure you're adequately protected. For more information or advice visit <https://www.tripadeal.com.au/travel-insurance>

## Schedule Of Fees

### Voluntary Changes

This includes booking changes requested by you, including but not limited to those changes requiring an airline ticket or a Purchase Confirmation reissue.

- Changes - \$100 per booking and any additional charges applied by the airline/cruise company/accommodation/other travel providers.

### Name Changes Due To Passenger Error

If the incorrect name has been provided, charges of \$100 per booking and any additional charges applied by the airline/cruise company/accommodation/other travel providers.

### Supplier Fees

In the event the tour package you have purchased is unable to proceed, and/or a Travel Supplier is unable to fulfil the tour due to external circumstances (Limitation of Liability e.g. a Force Majeure event), there may be a fee or amount of money that is withheld by our Suppliers and is unrecoverable. This may be due to non-refundable airline tickets, cancellation penalties with cruise cabins or unrecoverable payments with our land/accommodation partners. If refunds are not available from Suppliers, we will endeavour to obtain a travel credit on the best terms available and communicate these outcomes to you. In the event we are unable to obtain a refund or travel service credit, or part thereof, this cost is passed on to the customer as a Supplier Fee.