



Best of Borneo

SANDAKAN ● MANUKAN ISLAND

The Offer

Wildlife lovers and nature seekers, this unforgettable 10-day adventure through Borneo is for you. Discover the beauty of Borneo's fauna and flora, immerse yourself in bustling local markets, and explore lush jungles like never before.

Arriving in Sandakan, Malaysia, you'll head to Sepilok Orangutan Rehabilitation Centre to observe a morning orangutan feeding in the forest and watch young orangutans socialise and play in the outdoor nursery. Marvel at the world's smallest bear at the Bornean Sun Bear Conservation Centre before stopping by the Labuk Bay Proboscis Monkey Sanctuary where you might also be lucky enough to spot the Bornean Hornbill. Learn about the sobering history of the World War II Sandakan Death March at the Sandakan War Memorial Garden before taking a guided walk and bird-watching in lush tropical forests at the Rainforest Discovery Centre. Adventure awaits as you experience three river cruises in search of proboscis monkeys, macaques, Bornean pygmy elephants and other fascinating wildlife.

Stop by the sprawling Sabah Tea Garden Plantation, Borneo's only organic tea farm, where you'll enjoy lunch and shopping for Sabah's finest tea. Feel the healing properties

of a fish spa foot massage at Kampung Luanti, tour the Kundasang War Memorial Park commemorating brave Australian and British prisoners of war, spend an afternoon browsing local handicrafts at Nabalu Village Market and more. Afterwards, you'll catch a boat to the tropical island of Manukan Island where you'll spend a day swimming in turquoise waters, snorkelling with schools of fish and indulging in a buffet lunch. Immerse yourself in the soul of Sabah by visiting the Mari-Mari Cultural Village where you can enjoy unforgettable dance demonstrations, tour traditional homes, start a fire with a bamboo tree and so much more.

Experience the very best of Borneo with return international flights, eight nights of hotel and lodge accommodation, 19 meals including daily breakfast and more.

Want more? Add extra days to your itinerary with an extension package to the luxury Shangri-La Rasa Ria Resort where you can soak up the sun, sand and sea.

Offer available for a limited time or until sold out. TRIP A DEAL PTY LTD: 50149240433

Updated: 26 Jun 2026 12:54:38

Have a question about this deal? We're here to help.
Call our friendly team on 1300 158 912

1

FREQUENT
FLYER

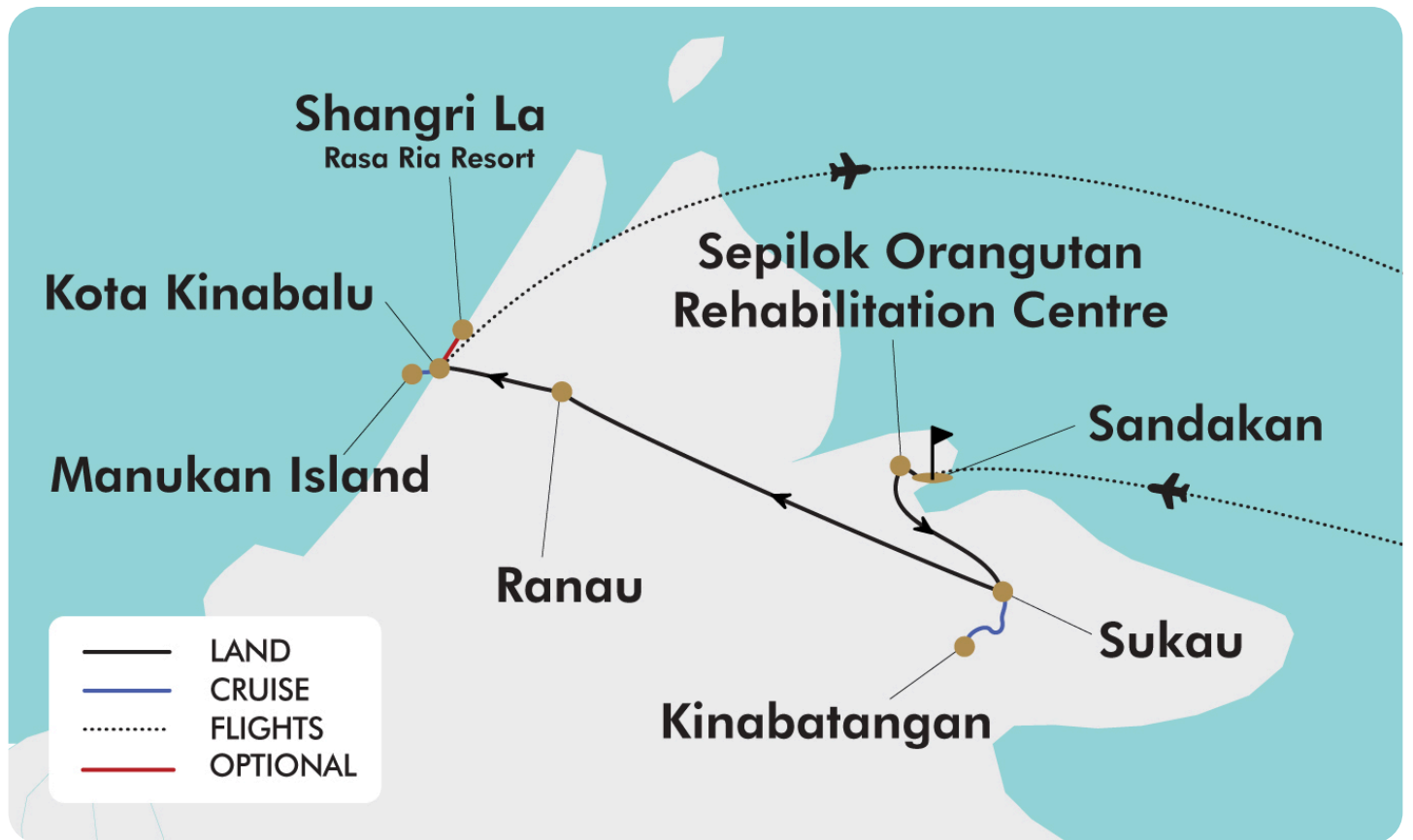


Trip
aDeal



10-DAY TOUR PACKAGE | BEST OF BORNEO

The Map



Offer available for a limited time or until sold out. TRIP A DEAL PTY LTD: 50149240433

Updated: 26 Jun 2026 12:54:38

Have a question about this deal? We're here to help.
Call our friendly team on 1300 158 912



10-DAY TOUR PACKAGE | BEST OF BORNEO

The Itinerary

Itinerary 1

Day 1 Australia - Kuala Lumpur - Sandakan, Malaysia

Today, you'll depart from Australia for your Borneo adventure! Upon arrival at the airport, you will be transferred to your hotel.

Please note: Due to flight scheduling and availability, some departures may occur on day 0. Affected customers must be available to depart the day before. Flight times will be indicated on your final documents, issued 4-6 weeks before departure.

Overnight: Elopura Hotel or similar, Sandakan

Meals included: In-Flight

Day 2 Sepilok Orangutan Centre - Sun Bear Centre - Rainforest Discovery Centre & Sandakan War Memorial

After breakfast, you'll visit the Sepilok Orangutan Rehabilitation Centre. On arrival, you'll proceed to the outdoor nursery to witness the amazing conservation work being done. The nursery is where young orangutans learn to socialise and play with each other under the close supervision of their human carers. You'll then head to the feeding platform for the morning feeding and watch a video presentation to further understand the objective and purpose of the centre.

Afterwards, you'll visit the Bornean Sun Bear Conservation Centre which is home to rescue Sun Bears, the world's smallest bear. Enjoy lunch at a local restaurant before driving to Rainforest Discovery Centre.

You'll then proceed to the Rainforest Discovery Centre to explore one of Sabah's finest examples of remaining tropical forests. Enjoy strolling along the guided canopy walkway famed for bird watching and photography. Continue to the Botanical Gardens

which is home to at least several hundred endemics and introduced plants before concluding your visit at the exhibit centre. Visit the Sandakan War Memorial Garden where the tragic World War II tale of the Sandakan Death March is told at the site of the POW camp which is where the marches began.

Finish the day back at the hotel and enjoy the rest of the afternoon at leisure before meeting in the hotel lobby in the evening for dinner at a local restaurant (at your own expense) before returning to the hotel.

Overnight: Elopura Hotel or similar, Sandakan

Meals included: Breakfast; Lunch

Day 3 Proboscis Monkey Sanctuary - Sukau, Kinabatangan

After breakfast, you'll visit Labuk Bay Proboscis Monkey Sanctuary to witness the feeding of these endemic animals in their natural habitat. On a lucky day, you might also see the silver leaf monkey or a Bornean Hornbill. Mid-morning you'll depart for Sukau, Kinabatangan, arriving in time for lunch and to check in to the lodge.

Enjoy afternoon tea before taking a river cruise along the longest river in Sabah in search of proboscis monkeys, macaques and other fascinating wildlife that gather near the Kinabatangan River. You'll then return to the lodge in time to freshen up for dinner.

Please note: The transfer to the lodge is by boat.

Overnight: Borneo Nature Lodge or similar, Sukau

Meals included: Breakfast; Lunch; Dinner



10-DAY TOUR PACKAGE | BEST OF BORNEO

The Itinerary

Itinerary 1

Day 4 Gomantong Cave & River Cruise, Kinabatangan

Wake up early this morning for a sunrise cruise along the Kinabatangan river to search for Bornean pygmy elephants that are native to the tropical rainforests of Borneo. One of the world's most charming and unique pachyderms, these pint-sized elephants are known for their small stature and gentle disposition in comparison to their much larger African cousins. You'll cruise for approximately one hour before heading back to the lodge for breakfast.

After breakfast get ready to visit Gomantong Cave, famed for its edible birds' nests. Take about 15 minutes' boardwalk to the opening of Simud Hitam cavern and explore the cave system on boardwalk. Return to the lodge for lunch.

You'll then enjoy free time before meeting at the lodge restaurant for afternoon tea and embarking on a late afternoon river cruise to search for more wildlife alternatively, you can relax and enjoy leisure time at the lodge.

Overnight: Borneo Nature Lodge or similar, Sukau

Meals included: Breakfast; Lunch; Dinner

Day 5 Sukau - Ranau - Sabah Tea Plantation - Kampung Luanti

After breakfast, you'll check out of the lodge and depart for Sabah Tea Garden Plantation which is approximately four hours away. You'll arrive in time for lunch at Sabah Tea Garden and have the chance to indulge in some free time before enjoying a fish spa foot massage at Kampung Luanti. In the evening, you'll enjoy dinner back at the Sabah Tea Garden Plantation.

Overnight: Sabah Tea Garden Cottages or similar, Ranau

Meals included: Breakfast; Lunch; Dinner

Day 6 Kundasang War Memorial Park - Kinabalu National Park - Kota Kinabalu

After breakfast this morning, you'll tour the Kundasang War Memorial Park. The park is made up of four beautiful gardens which include the Australian Garden, the English Garden, the Borneo Garden and the Contemplation Garden. Each garden represents the different nationalities involved in the Borneo campaign during World War 2.

Enjoy lunch at a local restaurant before continuing to Kinabalu National Park for a guided walk in the botanical garden where you can photograph native plants and wild orchids.

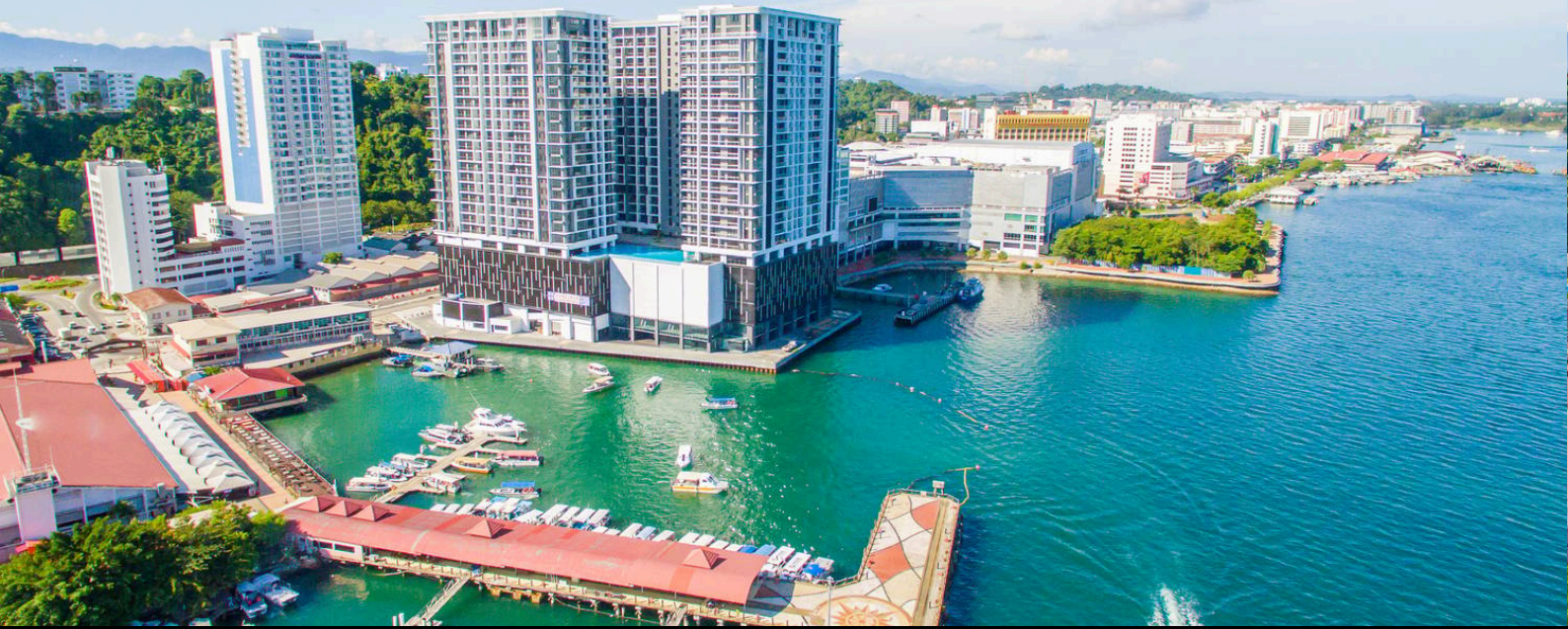
Lastly, you'll drive through the Crocker Range where amazing scenic views await. Stop at Nabal Village Market to browse for local handicrafts, souvenirs and snacks before checking in to the hotel.

Overnight: Hilton Hotel, Kota Kinabalu

Meals included: Breakfast; Lunch

Day 7 Manukan Island

Indulge in a sleep-in and breakfast at the hotel before being transferred to Sutera Jetty to catch a boat to Manukan Island. Here you'll enjoy a day of swimming and snorkelling around a tropical island, as well as a buffet lunch. In the afternoon you will return to the mainland and enjoy the evening at leisure.



10-DAY TOUR PACKAGE | BEST OF BORNEO

The Itinerary

Itinerary 1

Meet at the hotel lobby around 18:30 for dinner at a local restaurant.

Overnight: Hilton Hotel, Kota Kinabalu

Meals included: Breakfast; Lunch; Dinner

Day 8 Mari-Mari Cultural Village Tour

After breakfast, you'll head to the Mari-Mari Cultural Village which is located approximately 25 minutes from the city. At Mari-Mari you can take in the colours of cultural diversity and savour the soul of Sabah while enjoying tours of local communities' traditional homes along with culinary, craft and dance demonstrations. Each home here was built by descendants of the tribes they represent and offers a truly genuine experience. Not only does this village portray these tribes through the architectural genius of their traditional homes but also through a range of simulated lives of the olden epoch by the residents of the village.

Acquaint yourself with each tribe as they welcome you into their home and immerse yourself in their simple yet intricate lives. While traversing the village, find demonstration huts alongside the main houses where the daily activities of old times come to life. There is plenty to do for everyone from the making of a blowpipe, starting a fire with just a bamboo tree, tattoo-making and more. This is an unforgettable encounter of the Sabahan homeland and lunch is also provided at Mari-Mari Cultural Village.

Optional Activity: Kiulu Countryside Farming Experience

Depart Mari Mari at 14:00 for a scenic 45-minute drive through lush landscapes and cross a suspension bridge over the river to the serene countryside of Kiulu. Upon arrival, you'll be greeted with a warm welcome, followed by a comprehensive briefing and group orientation to prepare you for the enriching experience ahead. Embark on an immersive journey into farm life, where a knowledgeable farmer will guide you through the fields, offering insights into sustainable farming practices and the intricacies of crop and livestock management. You'll have the chance to sample fresh, seasonal produce straight from the farm, truly connecting with the origins of your food. The experience also includes a captivating cooking demonstration, where you'll learn to prepare delicious farm-to-table dishes using the farm's own ingredients. The day culminates in a delightful traditional dinner with the locals providing a perfect opportunity to savour the region's culinary heritage. You'll arrive back at the hotel around 20:30. Please see current pricing in Important Information.

Overnight: Hilton Hotel, Kota Kinabalu

Meals included: Breakfast; Lunch

Day 9 Kota Kinabalu, Malaysia - Australia (or New Zealand)

Today, at the appropriate time, you will be transferred to the airport for your return flight home.

Please note: Some travellers may have an evening departure this day so luggage storage facilities will be available at the hotel so you may explore Kota Kinabalu at leisure before your flight.

Meals included: Breakfast; In-Flight



10-DAY TOUR PACKAGE | BEST OF BORNEO

The Itinerary

Itinerary 1

Day 10 Arrive in Australia

Upon arrival in Australia, please make your own onward travel arrangements.



10-DAY TOUR PACKAGE | BEST OF BORNEO

The Itinerary

Itinerary 2

Day 1 Australia - Kuala Lumpur - Sandakan, Malaysia

Today, you'll depart from Australia for your Borneo adventure! Upon arrival at the airport, you will be transferred to your hotel.

Please note: Due to flight scheduling and availability, some departures may occur on day 0. Affected customers must be available to depart the day before. Flight times will be indicated on your final documents, issued 4-6 weeks before departure.

Overnight: Elopura Hotel or similar, Sandakan

Meals included: In-Flight

Day 2 Sepilok Orangutan Centre - Sun Bear Centre - Rainforest Discovery Centre & Sandakan War Memorial

After breakfast, you'll visit the Sepilok Orangutan Rehabilitation Centre. On arrival, you'll proceed to the outdoor nursery to witness the amazing conservation work being done. The nursery is where young orangutans learn to socialise and play with each other under the close supervision of their human carers. You'll then head to the feeding platform for the morning feeding and watch a video presentation to further understand the objective and purpose of the centre.

Afterwards, you'll visit the Bornean Sun Bear Conservation Centre which is home to rescue Sun Bears, the world's smallest bear. Enjoy lunch at a local restaurant before driving to Rainforest Discovery Centre.

You'll then proceed to the Rainforest Discovery Centre to explore one of Sabah's finest examples of remaining tropical forests. Enjoy strolling along the guided canopy walkway famed for bird watching and photography. Continue to the Botanical Gardens

which is home to at least several hundred endemics and introduced plants before concluding your visit at the exhibit centre. Visit the Sandakan War Memorial Garden where the tragic World War II tale of the Sandakan Death March is told at the site of the POW camp which is where the marches began.

Finish the day back at the hotel and enjoy the rest of the afternoon at leisure before meeting in the hotel lobby in the evening for dinner at a local restaurant (at your own expense) before returning to the hotel.

Overnight: Elopura Hotel or similar, Sandakan

Meals included: Breakfast; Lunch

Day 3 Proboscis Monkey Sanctuary - Sukau, Kinabatangan

After breakfast, you'll visit Labuk Bay Proboscis Monkey Sanctuary to witness the feeding of these endemic animals in their natural habitat. On a lucky day, you might also see the silver leaf monkey or a Bornean Hornbill. Mid-morning you'll depart for Sukau, Kinabatangan, arriving in time for lunch and to check in to the lodge.

Enjoy afternoon tea before taking a river cruise along the longest river in Sabah in search of proboscis monkeys, macaques and other fascinating wildlife that gather near the Kinabatangan River. You'll then return to the lodge in time to freshen up for dinner.

Please note: The transfer to the lodge is by boat.

Overnight: Borneo Nature Lodge or similar, Sukau

Meals included: Breakfast; Lunch; Dinner



10-DAY TOUR PACKAGE | BEST OF BORNEO

The Itinerary

Itinerary 2

Day 4 Gomantong Cave & River Cruise, Kinabatangan

Wake up early this morning for a sunrise cruise along the Kinabatangan river to search for Bornean pygmy elephants that are native to the tropical rainforests of Borneo. One of the world's most charming and unique pachyderms, these pint-sized elephants are known for their small stature and gentle disposition in comparison to their much larger African cousins. You'll cruise for approximately one hour before heading back to the lodge for breakfast.

After breakfast get ready to visit Gomantong Cave, famed for its edible birds' nests. Take about 15 minutes' boardwalk to the opening of Simud Hitam cavern and explore the cave system on boardwalk. Return to the lodge for lunch.

You'll then enjoy free time before meeting at the lodge restaurant for afternoon tea and embarking on a late afternoon river cruise to search for more wildlife alternatively, you can relax and enjoy leisure time at the lodge.

Overnight: Borneo Nature Lodge or similar, Sukau

Meals included: Breakfast; Lunch; Dinner

Day 5 Sukau - Ranau - Sabah Tea Plantation - Kampung Luanti

After breakfast, you'll check out of the lodge and depart for Sabah Tea Garden Plantation which is approximately four hours away. You'll arrive in time for lunch at Sabah Tea Garden and have the chance to indulge in some free time before enjoying a fish spa foot massage at Kampung Luanti. In the evening, you'll enjoy dinner back at the Sabah Tea Garden Plantation.

Overnight: Sabah Tea Garden Cottages or similar, Ranau

Meals included: Breakfast; Lunch; Dinner

Day 6 Kundasang War Memorial Park - Kinabalu National Park - Kota Kinabalu

After breakfast this morning, you'll tour the Kundasang War Memorial Park. The park is made up of four beautiful gardens which include the Australian Garden, the English Garden, the Borneo Garden and the Contemplation Garden. Each garden represents the different nationalities involved in the Borneo campaign during World War 2.

Enjoy lunch at a local restaurant before continuing to Kinabalu National Park for a guided walk in the botanical garden where you can photograph native plants and wild orchids.

Lastly, you'll drive through the Crocker Range where amazing scenic views await. Stop at Nabal Village Market to browse for local handicrafts, souvenirs and snacks before checking in to the hotel.

Overnight: Hilton Hotel, Kota Kinabalu

Meals included: Breakfast; Lunch

Day 7 Manukan Island

Indulge in a sleep-in and breakfast at the hotel before being transferred to Sutera Jetty to catch a boat to Manukan Island. Here you'll enjoy a day of swimming and snorkelling around a tropical island, as well as a buffet lunch. In the afternoon you will return to the mainland and enjoy the evening at leisure.



10-DAY TOUR PACKAGE | BEST OF BORNEO

The Itinerary

Itinerary 2

Meet at the hotel lobby around 18:30 for dinner at a local restaurant.

Overnight: Hilton Hotel, Kota Kinabalu

Meals included: Breakfast; Lunch; Dinner

Day 8 Mari-Mari Cultural Village Tour

After breakfast, you'll head to the Mari-Mari Cultural Village which is located approximately 25 minutes from the city. At Mari-Mari you can take in the colours of cultural diversity and savour the soul of Sabah while enjoying tours of local communities' traditional homes along with culinary, craft and dance demonstrations. Each home here was built by descendants of the tribes they represent and offers a truly genuine experience. Not only does this village portray these tribes through the architectural genius of their traditional homes but also through a range of simulated lives of the olden epoch by the residents of the village.

Acquaint yourself with each tribe as they welcome you into their home and immerse yourself in their simple yet intricate lives. While traversing the village, find demonstration huts alongside the main houses where the daily activities of old times come to life. There is plenty to do for everyone from the making of a blowpipe, starting a fire with just a bamboo tree, tattoo-making and more. This is an unforgettable encounter of the Sabahan homeland and lunch is also provided at Mari-Mari Cultural Village.

Optional Activity: Kiulu Countryside Farming Experience

Depart Mari Mari at 14:00 for a scenic 45-minute drive through lush landscapes and cross a suspension bridge over the river to the serene countryside of Kiulu Upon arrival, you'll be greeted with a warm welcome, followed by a comprehensive briefing and group orientation to prepare you for the enriching experience ahead. Embark on an immersive journey into farm life, where a knowledgeable farmer will guide you through the fields, offering insights into sustainable farming practices and the intricacies of crop and livestock management. You'll have the chance to sample fresh, seasonal produce straight from the farm, truly connecting with the origins of your food. The experience also includes a captivating cooking demonstration, where you'll learn to prepare delicious farm-to-table dishes using the farm's own ingredients. The day culminates in a delightful traditional dinner with the locals providing a perfect opportunity to savour the region's culinary heritage. You'll arrive back at the hotel around 20:30. Please see current pricing in Important Information.

Overnight: Hilton Hotel, Kota Kinabalu

Meals included: Breakfast; Lunch



10-DAY TOUR PACKAGE | BEST OF BORNEO

The Itinerary

Itinerary 2

Day 9 Shangri-La Rasa Ria Resort

Today you'll check out of the hotel and transfer to another Shangri-La property, the nearby luxury Shangri-La Rasa Ria Resort which is approximately one hour outside of Kota Kinabalu. Escape the city and journey into nature where the sea meets the rainforest and a warm welcome awaits. Create unforgettable memories at this 400-acre beach resort with a 3-kilometre private beach, 64-acre forest reserve and 18-hole golf course. Here you can soak up the sun, sand and the sea while enjoying the great outdoors with over 60 activities at the resort.

Overnight: Shangri-la Rasa Ria Resort (Garden Wing Deluxe Room), Kota Kinabalu

Meals included: Breakfast

Day 10 Shangri-La Rasa Ria Resort

Today is a free day to unwind and enjoy the resort facilities and beaches.

Overnight: Shangri-la Rasa Ria Resort (Garden Wing Deluxe Room), Kota Kinabalu

Meals included: Breakfast

Day 11 Kota Kinabalu, Malaysia - Australia (or New Zealand)

Today, at the appropriate time, you will be transferred to the airport for your return flight home.

Please note: Some travellers may have an evening departure this day so luggage storage facilities will be available at the hotel so you may explore Kota Kinabalu at leisure before your flight.

Meals included: Breakfast; In-Flight

Day 12 Arrive in Australia

Upon arrival in Australia, please make your own onward travel arrangements.



10-DAY TOUR PACKAGE | BEST OF BORNEO

Tour Inclusions

HIGHLIGHTS

- Explore Kota Kinabalu, Ranau, Sukau and beyond
- Visit the Sepilok Orangutan Rehabilitation Centre
- Witness a morning orangutan feeding in the forest
- Go snorkelling at beautiful Manukan Island in Sabah
- Explore Kinabalu National Park on a guided walk
- Delve into Borneo's past at Mari Mari Cultural Village
- Marvel at scenic views on a drive through Crocker Range
- Shop for handicrafts and souvenirs at Nabalu Village markets
- Visit the historic Kundasang War Memorial Park
- Experience a fish spa foot massage at Kampung Luanti
- See the world's smallest bear at the Bornean Sun Bear Conservation Centre
- Enjoy up to three cruises along the Kinabatangan River
- Visit the Labuk Bay Proboscis Monkey Sanctuary
- Photograph proboscis monkeys, macaque primates and more
- Look for Bornean pygmy elephants on a Kinabatangan River cruise
- Tour Sabah's fascinating Rainforest Discovery Centre
- Keep an eye out for exotic flora and fauna native to Borneo
- Visit Borneo's only organic tea farm in Sabah

FLIGHTS

Return international full-service flights (economy class), departure city surcharges may apply (Excludes Trip Only option)

ACCOMMODATION

8 nights hotel and lodge accommodation

DINING

Enjoy 19 meals including daily breakfast

ESSENTIALS

- Professional English-speaking guides
- Airline taxes and surcharges
- National park fees (unless otherwise specified)

TRANSPORT

Transportation by private air-conditioned vehicles

TRANSFERS

Return airport transfers (Excludes Trip Only option)

EXTENSION PACKAGE

- All of the above plus the following:
- Two nights at the luxurious Shangri-La Rasa Ria resort
- Stay in a well-appointed Garden Wing Deluxe Room
- Indulge in daily buffet breakfast

Important Information

**Please note: All information provided in this brochure is subject to both change and availability. Prior to purchase please check the current deal for up-to-date information. If you have already purchased this deal, the terms and conditions on your Purchase Confirmation apply and take precedence over the information in this brochure.*

Booking Information

After purchase, you will receive a receipt and a Purchase Confirmation, directing you to an online Passenger Information Form. You must complete the Passenger Information Form within 72 hours of purchase. Any special requests, preferences and optional extras MUST be clearly stated in your Passenger Information Form. Any change requested after submitting your Passenger Information Form cannot be guaranteed, is strictly subject to availability and will incur surcharges as outlined in the Schedule of Fees below.

On purchasing this Travel Offer, you are bound by the [General Terms and Conditions](#) and the specific terms and conditions outlined in this Important Information.

Please note: All countries and territories have different entry requirements in relation to vaccinations, quarantine/isolation periods and travel restrictions. Due to the evolving nature, we would ask all of our customers to monitor, meet and adhere to the specific requirements of their intended destination(s) in the lead-up to and immediately before travel, as well as any requirements post-travel upon their return.

Our Policies

Cancellation & Refund Policy

By placing a booking with us, you acknowledge the following important information:

- **we act as your booking agent:** TripADeal is a booking services provider, and curates the Travel Offers available on our website. We act as your booking agent, and we receive payment for the Booking Services as part of the booking price, however, we do not provide any of the

Travel Services (flights, accommodation, tours or other products or services) included in your booking – the Travel Services are provided by a number of third party Travel Suppliers.

- **each booking is unique:** our Travel Offers are made up of a variety of different components and are, during the booking process, uniquely tailored to suit your requirements, for example, departure dates and ports, flight and room upgrades, tour inclusions, etc.
- **changes/modifications to your booking may not be possible:** once your booking has been made, changes or modifications may not be possible, and where possible, may incur a fee. It is important to ensure that the information you provide during the booking process is accurate and up to date, and that you read the Travel Offer carefully before placing your order.
- **Travel Offers are a package:** our Travel Offers have been curated into package offerings and must be used as a package – individual components cannot be used independently of the full package offering.
- **our Travel Offers are generally non-refundable:** in order to provide great value Travel Offers, we work with a variety of Travel Suppliers to find the best deals – this often means the Travel Suppliers' offerings are non-refundable to ensure the best price. We recommend that you obtain travel insurance as soon as you make a booking with us. If your plans change, you can receive a full refund (excluding credit card fees) if you cancel at least 12 months in advance to your scheduled departure date.

To read more about our Cancellation and Refund Policy, please click [here](#).

General Terms & Conditions

By placing your booking with us, you acknowledge and agree to our [Terms & Conditions](#), [Privacy Policy](#) and [Cancellation Policy](#).

Offer Essentials

This travel offer is valid for travel on selected dates until the 31st October 2027.

This travel offer is priced per person based on a twin share.

Single Traveller Supplement

For solo travellers, a mandatory single supplement applies:

- 2026 Itinerary 1: \$600
- 2026 Itinerary 2: \$1,050
- 2027 Itinerary 1: \$975
- 2027 Itinerary 2: \$1,400

Please note: Accommodation for single customers who are travelling on a tour or cruise package may be in a single room, depending on availability.

Departure Dates & Surcharges

See checkout for live dates and availability.

Flights

(Flight information for options excluding Trip Only)

Departure Cities

Sydney*, Melbourne, Brisbane*, Adelaide*, Perth

Departure City Surcharges

- Sydney: \$50 person
- Brisbane: \$150 person
- Adelaide: \$550 person

International Flights

- Cabin Class: Economy Class.

Please note: We cannot accommodate one-way flights. Travellers must take all included flights within the package, and any flights intentionally forfeited will result in later flights being subject to cancellation.

Missed Flights

If you fail to arrive for your outbound flight, you risk all flight and land arrangements in your destination being automatically cancelled by the airlines and land operator, respectively. Additional fees may apply to reinstate these services. If you will miss your flight for whatever reason, please contact us as soon as possible to make arrangements.

Important Information

Arrive Early and Stay Behind Options

Fly out and return home up to 60 days pre and post your tour dates.

Arrive Early

Sandakan, Malaysia - From \$300 per person, subject to availability.

Kuala Lumpur, Malaysia - From \$300 per person, subject to availability (only available for purchases over the phone).

Stay Behind

Kota Kinabalu, Malaysia - From \$300 per person, subject to availability.

Kuala Lumpur, Malaysia - From \$300 per person, subject to availability (only available for purchases over the phone).

Please note:

● Exclusions:

This fee does not include extra nights' accommodation, meals or airport transfers.

● Internal Flights:

If you select to Arrive Early or Stay Behind in a city other than the one where the tour starts or ends, the package will include an internal flight to your destination. If you wish to forfeit this flight, please advise our friendly team at the time of purchase.

Please note that the cost does not change when you choose to forfeit your connecting flight.

● Cancellations & Changes:

Flight booking changes or cancellations after air tickets have been issued are not guaranteed and may incur additional fees and fare difference, subject to the airline cancellation and change policies. Flight changes are subject to availability at the time of booking.

● High-Season:

A high-season Arrive Early or Stay Behind can be purchased for an additional charge, subject to availability. For pricing, please refer to the cart.

● + 60 days:

You can fly out up to 60 days before your package's start date, and/or return home 60 days after your package's end date. Should you wish to fly out or return home for more than 60 days from the tour, please contact us to request availability. Additional costs may apply.

● Estimated dates:

Your estimated departure, return, and arrival dates are all subject to availability and may vary. The confirmed schedule for all flights will be provided when you receive your flight tickets.

● High season surcharges apply to flights departing between the below date ranges:

28 March 2025 - 27 April 2025
16 June 2025 - 20 July 2025
15 September 2025 - 12 October 2025
1 December 2025 - 31 January 2026
3 April 2026 - 20 April 2026
26 June 2026 - 17 July 2026
18 September 2026 - 9 October 2026
12 December 2026 - 26 January 2027

Stopover Packages

- Kuala Lumpur
 - Singapore
- Includes:
- 2, 3 or 5 nights in 4-star accommodation
 - Daily breakfast
 - Return airport transfers

For pricing, please refer to the payment cart at checkout.

Please note:

- *When a pre and post-tour stopover is chosen, the same stopover location must be chosen each way, due to the airline used.*
- *When selecting to Arrive Early for your tour in conjunction with a Stopover Package, your fly out date from home will take place before the stopover.*
- *When selecting to Stay Behind after your tour in conjunction with a Stopover Package, your stopover will take place before your final flight home.*
- *Stopover packages are subject to availability.*

- *In the event that a purchased stopover package and a purchased preferred airline upgrade are not compatible, you will have the option to receive a refund for the preferred airline upgrade or be offered an alternative stopover city option, e.g if you choose to fly with Singapore Airlines you cannot stopover in Dubai.*
- *Blackout dates apply to flights departing between the below date ranges:*

Singapore Grand Prix: 2 October - 8 October 2025

Christmas and New Years Eve: 22 December 2025 - 2 January 2026

Singapore Grand Prix: 1 October - 9 October 2026

Christmas and New Years Eve: 22 December 2026 - 3 January 2027

Flight Class Upgrades

Business Class: For pricing, please refer to the payment cart at checkout.

Please note:

- *Flight upgrades are subject to availability and pricing changes (if we cannot fulfil your request, the upgrade cost will be refunded).*
- *On any upgrade purchase, short-haul flights and domestic flight sectors are not guaranteed.*

Trip Only Option

If you choose to remove international flights from your package, your holiday may be shorter, as travel days for flights are not included in the Trip Only package. You will receive an email confirmation when minimum numbers have been met and the departure is guaranteed.

We recommend making further travel arrangements, such as flights, after you have received confirmation of a guaranteed departure. TripADeal assumes no liability for financial losses incurred due to travel arrangements made prior to confirmation of guaranteed departure.

Note: The Trip Only Package does not include return international airfares or airport transfers. At the conclusion of the tour, you will be responsible for booking your own onward travel.

Important Information

[Click here for full Trip Only terms and conditions](#) (see section 4.1)

Accommodation

Accommodation Used

Standard Properties

- Sandakan: Elopura Hotel or similar
- Kota Kinabalu: Hilton Hotel or similar
- Ranau: Sabah Tea Garden Cottage or similar

Speciality Lodge

- Sukau: Borneo Nature Lodge

Luxury Resort (Extension Package Only)

- Kota Kinabalu: Shangri-La Rasa Ria Resort

Please note: Accommodation/rooms offered are based on a lead-in room type and are subject to availability based on seasonality. In the instance a property is not available, a similar standard of accommodation will be provided. Properties will be confirmed and included in your travel pack, which you will receive 4-6 weeks before travel.

Extra Nights

Not available at check-out.

Please note: If you are interested in booking additional nights of accommodation pre or post-tour, please wait until you receive your travel documentation approximately 4-6 weeks before departure for the confirmed list of hotels. If booking your own additional accommodation directly with the hotel, please be aware that you may be required to change rooms at the start/end of your tour.

Maximum Room Capacity

2 people.

Child Policy

- No child discounts. The full price applies to all children travelling with their parents.
- Valid for children 6 years old and over.

Please note: Children must be accompanied by a responsible adult 18 years old and over to travel. No unaccompanied minors are allowed.

Triple Share

Not available.

Bedding Configuration

Twin share or double bedding (subject to availability).

General Information

Minimum group size 10, maximum group size 30 per vehicle.

Optional Tours

Day 8: Kiulu Countryside Farming Experience - \$195 AUD

Please note:

- *Prices are based per person, are subject to availability, time permitting and weather conditions.*
- *The optional tours listed above must be purchased on checkout or over the phone before submitting your passenger information form (subject to availability). Optional tours may be able to be purchased whilst on tour, however this is subject to availability and they are charged at the same or a higher cost, in the local currency or USD.*
- *Some tours require minimum numbers to operate.*

Exclusions

- Visa fees and requirements.
- Domestic transfers and flights not stated in the deal offer.
- Meals/beverages not stated in the deal offer.
- Gratuities/tipping.
- Optional activities/tours.
- Personal expenses.
- Travel insurance.
- Malaysian Tourism Tax (10 MYR per night, per room. Approximately \$3 AUD)
- Professional/digital camera use at animal encounters (10 MYR; approximately \$3 AUD)
- Any costs associated with an interruption to your tour as a result of an airline schedule change or cancellation
- Mandatory city tax

Please note: Return international flights and transfers to and from the tour are not included in the Trip Only option.

Other Important Information

TOUR GUIDE VS. TOUR LEADER

Tour Guide

Often locals with intimate knowledge of an area, its culture, and history. Their role entails providing commentary, routing the tour, and seeing that people have a good time. They are a licensed, qualified expert who supplies specific information on the history, art, architecture and culture of the city/village/attraction where they are guiding the tour. The guide meets the group at the required place and leaves it at the end of the tour; they do not travel with the group.

Tour Leader

An experienced person tasked with ensuring the smooth operation of tours, as well as providing practical support to passengers throughout the whole trip. Their role primarily includes assisting with accommodation, transportation between locations, and communication with tour guides at each stop. A tour leader may provide general guidance around a city or village and offer information on the place visited on the bus. However, they are not required to have specific art, architecture, or historical knowledge. They are not allowed to provide a guided tour or commentary of a city/village/attraction once there and, if caught doing so, can be fined.

Please note: Tour leaders/guides are not a standard inclusion in all travel offers. Tour leaders/guides will only be made available when required to enhance the experience of the destination featured.

CLIMATE & AVERAGE TEMPERATURES

Borneo

As part of the Sabah area, Kota Kinabalu features a typical equatorial climate with constant temperatures. Kota Kinabalu's average temperature ranges from 26°C to

Important Information

28°C. April and May are the hottest months, while January is the coolest one. The average annual rainfall is around 2,400mm and varies markedly throughout the year.

FLIGHTS

Seat Selection & Frequent Flyer Points

We do not arrange seat selection. It is essential to highlight that some airlines do not allow pre-selected seats. We strongly suggest you contact the airline directly with seating allocation requirements and/or arrive at the airport earlier to arrange your seating. While we do not add frequent flyer member details to bookings, you can do this directly with the airline once you have your flight information.

Passport Validity

Customers must provide valid passport details either at the time of purchase or no later than 45 days before the departure date. Failure to do so may result in the cancellation of the booking. Customers will be responsible for any costs and fees incurred in this instance.

COACH TOUR

Meals

For meals not included, the tour leader (when available) will offer assistance with reservations, suggestions and directions to local restaurants. It is your responsibility to notify us of any dietary requests/requirements.

Please note: We will do our best to meet your requests/requirements; however, we cannot guarantee that we will always be able to.

Luggage

You will be responsible for all your personal belongings whilst on tour. You must carry your own luggage from the vehicle to the hotel room and back to the vehicle. The driver will assist with the uploading and unloading of bags from the vehicle.

OTHER

Mobility

If you require wheelchair access please contact our friendly sales and service team to inquire on your behalf.

Fitness Level Required

Adventure (and spontaneity) create some of the best travel memories. Bear in mind, your home schedules and timings might not be adhered to on tour - it's all part of the fun!

A moderate level of fitness will be required. Expect a moderate pace of touring with a focus on guided tours that may include full days with extended activity, guided city tours or nature walks. You will require a general level of fitness for unassisted navigation of stairs and inclines, longer distances with possible periods of standing when visiting sites, walking on sloping, uneven ground or elevations. You will be responsible for your own luggage and have the ability to board all modes of transport without assistance. Please note: Many areas may be inaccessible to wheelchairs or mobility scooters, where the unassisted use of personal walking sticks and other aids may be required. Although some assistance may be available, every traveller should be self-reliant during all aspects of their travel.

Please note: It is expected that every traveller must be self-reliant and able to undertake all aspects of their own travel. Please speak to your booking agent about your personal circumstances and any assistance requirements to ensure this tour is right for you.

Please note: If you have any concerns, please consult your healthcare provider prior to purchase/travel.

Gratuities/Tipping

Land

Gratuities (tips) are not included for the services of the tour leader (when available) and driver throughout the tour. The recommended tip is \$10-20 AUD per person per day. This covers the guide/leader and the driver and will be collected

on tour.

Please note: Tipping for services provided is always a matter of personal discretion; however, please be aware that many locals consider tipping part of their normal remuneration, and they may approach you for payment; there's no need to be intimidated by the request.

Sightseeing

Please note: If entry to a site is affected by changes in operating hours or public holiday closures, your itinerary, where possible, may be adjusted, or a similar activity will be offered in its place (subject to availability).

Wildlife

TripADeal cannot guarantee animal sightings. Wildlife are unpredictable and factors such as weather conditions, predatory fear and animal movements can impact sightings.

Shopping

Shopping overseas can be a daunting and confusing experience, especially when there is a language barrier. Please be very cautious when foreign currencies and prices are involved. If paying by credit card, please pay close attention to the amount you are being charged and keep all your receipts. Do not make any purchases you are not comfortable with or feel pressured into. If you are uncertain or need assistance with the language barrier, please seek assistance from your Tour Guide/Leader. Please refer to our [Terms and Conditions](#) regarding shopping for further information.

Visas

Borneo, Malaysia

A 90-day tourist visa will generally be granted upon arrival into Borneo, Malaysia if travelling on an Australian or New Zealand passport. Effective December 2023, all foreigners entering Malaysia will be required to complete the "Malaysia Digital Arrival Card (MDAC)" at least 3 days prior to their arrival. This applies to all travellers, except for those transiting or

Important Information

transferring through Singapore without seeking immigration clearance, Malaysian permanent residents and Malaysian Automated Clearance System (MACS) holders. For more information regarding the MDAC, please visit <https://imigresen-online.imi.gov.my/mdac/main>.

Important:

- *Please start arranging your visa three weeks before departure to account for any delays due to consulate operating hours.*
- *Visa rules may have changed since Covid-19. Some countries and airlines may require you to obtain an additional visa before arrival. Please check with the nearest embassy, consulate or immigration department of the destination you're entering.*

Please note:

- *Passengers who are not Australian citizens must also check with the respective consulate or visa agency to determine what their visa requirements are and what personal identification is required.*
- *It is also important to note that some areas of employment, such as journalism, government authorities and charity organisations, may have additional restrictions in applying for visas. This may, in turn, affect the type of application required.*

Travel Insurance

Embarking on your next trip is exciting, and while you hope the unexpected does not happen, it is best to be prepared. We strongly recommend you take out travel insurance when making your booking. Whether it's a potential medical emergency, a flight cancellation, a delayed suitcase, or an unforeseen event, it's important to ensure you're adequately protected. For more information or advice visit <https://www.tripadeal.com.au/travel-insurance>

Schedule Of Fees

Voluntary Changes

This includes booking changes requested by you, including but not limited to those

changes requiring an airline ticket or a Purchase Confirmation reissue.

- Changes - \$100 AUD per booking and any additional charges applied by the airline/cruise company/accommodation/other travel providers.

Name Changes Due To Passenger Error

If the incorrect name has been provided, charges of \$100 AUD per booking and any additional charges applied by the airline/cruise company/accommodation/other travel providers.

Supplier Fees

In the event the tour package you have purchased is unable to proceed, and/or a travel Supplier is unable to fulfil the tour due to external circumstances (Limitation of Liability e.g. a Force Majeure event), there may be a fee or amount of money that is withheld by our Suppliers and is unrecoverable. This may be due to non-refundable airline tickets, cancellation penalties with cruise cabins or unrecoverable payments with our land/accommodation partners. If refunds are not available from Suppliers, we will endeavour to obtain a travel credit on the best terms available and communicate these outcomes to you. In the event we are unable to obtain a refund or travel service credit, or part thereof, this cost is passed on to the customer as a Supplier Fee.