



Rugby League Vegas & Luxury Antarctica

ARGENTINA • CHILE • UNITED STATES • ANTARCTICA

The Offer

Super League Game: Hull KR vs Leeds Rhinos

NRL Game: Newcastle Knights vs North Queensland Cowboys

NRL Game: Canterbury-Bankstown Bulldogs vs St. George Illawarra Dragons

When: Saturday, 28 February 2026

Where: Allegiant Stadium, Las Vegas

Embark on an extraordinary adventure taking you from the bright lights of Las Vegas to the icy waters of Antarctica. Witness back-to-back games of Rugby League at Allegiant Stadium, magnificent icebergs among remote territories and more.

Your adventure begins in the entertainment capital of the world, where extraordinary resorts, casinos and performances await. The NRL Telstra Premiership season then kicks off at Allegiant Stadium on Saturday, 28 February 2026. You don't want to miss two blockbuster clashes between the Newcastle Knights and North Queensland Cowboys, and the Canterbury-Bankstown Bulldogs taking

on the St George Illawarra Dragons. The Super League will also be on display at Rugby League Las Vegas, with the Leeds Rhinos going up against Hull KR.

Board a flight to Argentina for time at leisure in the historic neighbourhoods of Buenos Aires. After a charter flight to Ushuaia, you'll embark on the Swan Hellenic 5-star SH Vega, designed to traverse remote polar regions in style and comfort. Onboard, you can unwind in the sauna or jacuzzi, dine on quality regional ingredients at The Swan Restaurant, attend enlightening lectures by the expedition team and more. Set sail to the Antarctic Peninsula to admire iceberg-filled waters, captivating wildlife and snow-covered islands. You'll set foot where few have before, including Jenny Island, Bongrain Point, Elephant Point and beyond.

This once-in-a-lifetime package includes all flights, gold tickets to the NRL Telstra Premiership, 5-star hotel accommodation, a 13-night Swan Hellenic expedition cruise, 39 meals with select beverages onboard and more.

Want more? Choose Itinerary 2 to experience the rugged beauty and remote wilderness of the Chilean Fjords.

Offer available for a limited time or until sold out. TRIP A DEAL PTY LTD: 50149240433

Updated: 10 Jul 2025 11:46:38

Have a question about this deal? We're here to help.
Call our friendly team on 1300 158 912



ARGENTINA ● CHILE ● UNITED STATES ● ANTARCTICA

The Offer



Offer available for a limited time or until sold out. TRIP A DEAL PTY LTD: 50149240433

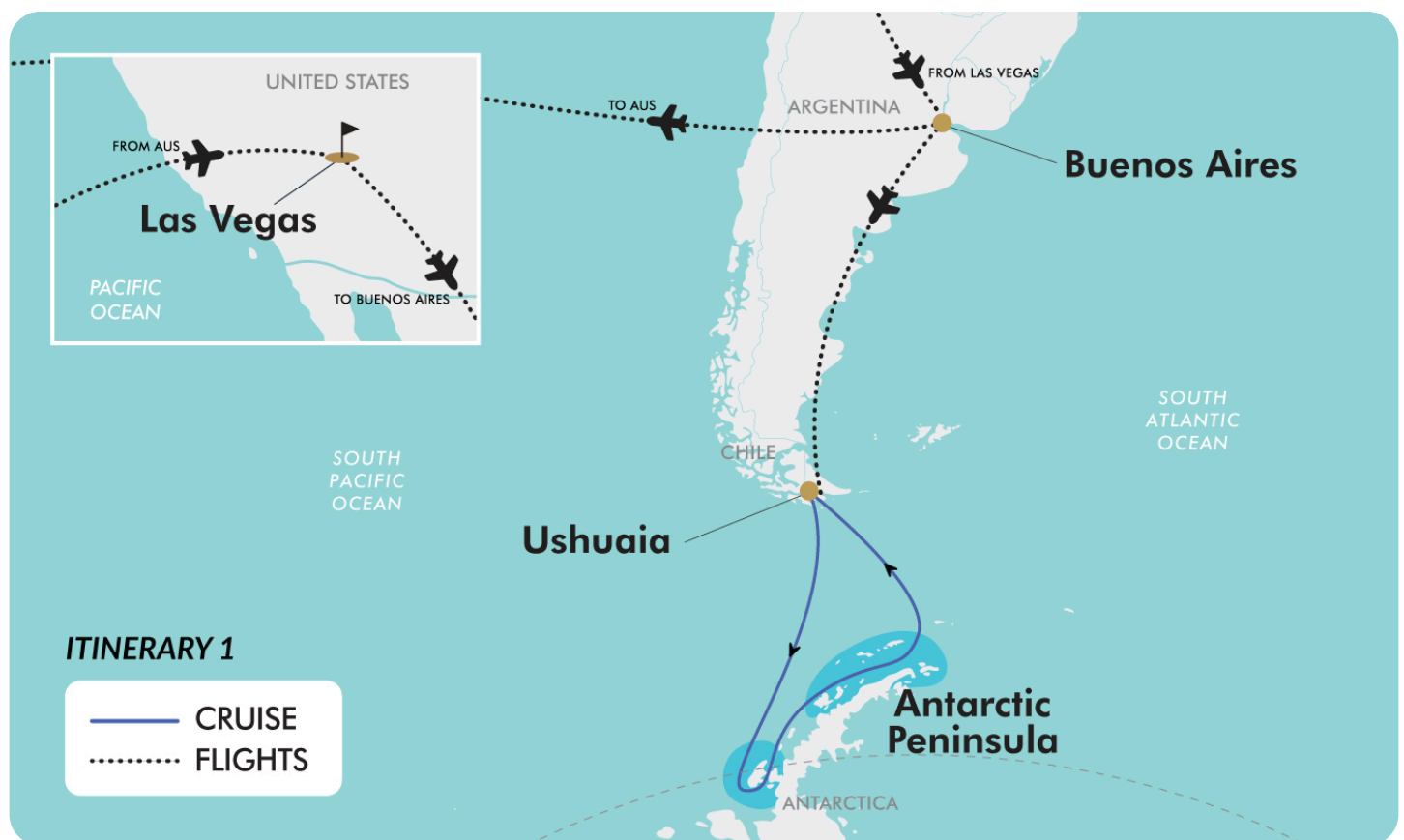
Updated: 10 Jul 2025 11:46:38

Have a question about this deal? We're here to help.
Call our friendly team on 1300 158 912



24-DAY CRUISE PACKAGE | RUGBY LEAGUE VEGAS & LUXURY ANTARCTICA

The Map



Offer available for a limited time or until sold out. TRIP A DEAL PTY LTD: 50149240433

Updated: 10 Jul 2025 11:46:38

Have a question about this deal? We're here to help.
Call our friendly team on 1300 158 912



24-DAY CRUISE PACKAGE | RUGBY LEAGUE VEGAS & LUXURY ANTARCTICA

The Itinerary

Itinerary 1

Day 1 Australia (or New Zealand) - Las Vegas, Nevada

Today, make your own way to the airport for your flight to the USA. Upon arrival, make your own way to your hotel.

Optional Activity: Private Vehicle Transfer

Add a private vehicle transfer from the Las Vegas airport to your hotel. Please see current pricing in Important Information.

Overnight: Aria Resort and Hotel or similar, Las Vegas, Nevada

Meals included: In-Flight

Day 2 Free Day Las Vegas - NRL Fan Fest

Enjoy the day at leisure in glittering Las Vegas or head off the beaten track to the nearby Grand Canyon or Valley of Fire State Park.

You might like to join the free NRL Fan Fest event on Fremont Street in downtown Las Vegas where the teams will be presented on stage. Catch live entertainment acts, enjoy the opportunity to snag some autographs, snap a selfie with the players and score giveaways at this free event.

Overnight: Aria Resort and Hotel or similar, Las Vegas, Nevada

Meals included: None

Day 3 Free Day Las Vegas

Enjoy the day at leisure in glittering Las Vegas or head off the beaten track to the nearby Grand Canyon or Valley of Fire State Park.

Overnight: Aria Resort and Hotel or similar, Las Vegas, Nevada

Meals included: None

Day 4 NRL Game Day

Strap yourself in! Game day is here, with three huge back-to-back games hitting the field! In 2026, the NRL Telstra Premiership season will once again kick off on American soil at the renowned Allegiant Stadium. In the afternoon, make your own way to Allegiant Stadium in time for the celebrations to commence. Catch all the action between Super League sides Hull KR and Leeds Rhinos, then NRL showdowns between the Newcastle Knights and the North Queensland Cowboys, and the Canterbury-Bankstown Bulldogs and St. George Illawarra Dragons. There will also be loads of fan activities, food trucks, drinks, merchandise and much more available for purchase throughout the day!

Please note: Official game times have not yet been confirmed by the NRL. For the most up-to-date information closer to the event, check the NRL's official website, your game day tickets, and your travel pack information.

Overnight: Aria Resort and Hotel or similar, Las Vegas, Nevada

Meals included: None

Day 5 Las Vegas, Nevada - Buenos Aires, Argentina

At the appropriate time, make your own way to the airport for your flight to Buenos Aires, Argentina.

Optional Activity: Las Vegas Private Vehicle Transfer

Add a private vehicle transfer from your hotel to Las Vegas Airport. Please see current pricing in Important Information.

In flight

Meals included: In-Flight

Offer available for a limited time or until sold out. TRIP A DEAL PTY LTD: 50149240433

Updated: 10 Jul 2025 11:46:38

Have a question about this deal? We're here to help.
Call our friendly team on 1300 158 912





24-DAY CRUISE PACKAGE | RUGBY LEAGUE VEGAS & LUXURY ANTARCTICA

The Itinerary

Itinerary 1

Day 6 Buenos Aires, Argentina

Upon arrival in Buenos Aires, a transfer is arranged to your hotel. Once checked in, enjoy the remainder of your day at leisure.

Overnight: Buenos Aires Hilton or similar, Buenos Aires
Meals included: None

Day 7 Free Day Buenos Aires

The capital of Argentina is known for its rich cultural heritage, lively arts scene and stunning architecture. Often referred to as the "Paris of South America", the city blends European elegance with Latin American flair. You'll find wide boulevards, historic neighbourhoods and colourful street art.

Enjoy time to explore iconic landmarks like the Plaza de Mayo, the historic San Telmo district, and the famous Recoleta Cemetery where Eva Perón is buried. Buenos Aires is also renowned for its tango music and dance, as well as its diverse culinary scene. Don't miss delicious steaks and traditional Argentine dishes.

Overnight: Buenos Aires Hilton or similar, Buenos Aires
Meals included: None

Day 8 Buenos Aires - Ushuaia - Embark 13-Night Antarctic Circle Cruise

Departs: 18:00 hours

After check out this morning, a transfer is arranged to take you to the airport for your charter flight to Ushuaia. Nestled in the foothills of the snow-capped Martial Range, Ushuaia's colourful streets and mismatched buildings cascade from the imposing mountains to the shores of the Beagle Channel. As one of the world's southernmost cities, Ushuaia carries its 'end of the world' reputation well. The moody weather and dramatic surroundings certainly help.

Upon arrival, a transfer is provided to the ship. Once onboard, enjoy the remainder of the day at leisure exploring this luxury vessel before departing to one of the most captivating wilderness regions of the world.

Overnight: Swan Hellenic SH Vega
Meals included: Dinner

Day 9 Cruising

Sea days are rarely dull so take the time to sit back and let the world go by from the ship's observation decks. Enjoy the opportunity to mingle with other passengers or head to the library which is stocked full of reference books. Get an expert's view in one of the onboard lectures or perfect your photography skills with invaluable advice from our onboard professional photographers.

Overnight: Swan Hellenic SH Vega
Meals included: Breakfast; Lunch; Dinner

Offer available for a limited time or until sold out. TRIP A DEAL PTY LTD: 50149240433

Updated: 10 Jul 2025 11:46:38

Have a question about this deal? We're here to help.
Call our friendly team on 1300 158 912





24-DAY CRUISE PACKAGE | RUGBY LEAGUE VEGAS & LUXURY ANTARCTICA

The Itinerary

Itinerary 1

Day 10 Cruising

A day at sea aboard SH Vega offers a blend of relaxation and enrichment amidst polar landscapes. Begin your morning with a stretch class or invigorate at the state-of-the-art gym. Enjoy panoramic views from the Observation Lounge, where the expedition team often shares insights through lectures and presentations. For a more tranquil experience, unwind in the sauna, soak in the jacuzzi or take a dip in the heated outdoor pool. Evenings can be spent savouring gourmet cuisine in the Swan Restaurant or enjoying tapas-style dining in the Club Lounge. Throughout the day, the ship's design ensures unobstructed views, allowing you to immerse yourself in the ever-changing polar scenery.

Overnight: Swan Hellenic SH Vega

Meals included: Breakfast; Lunch; Dinner

Day 11 Cruising

Overnight: Swan Hellenic SH Vega

Meals included: Breakfast; Lunch; Dinner

Day 12 Antarctic Peninsula - Marguerite Bay - Jenny Island - Bongrain Point

Among captivating glaciers and majestic icebergs, the Antarctic Peninsula is where most visitors to the White Continent live their Antarctica dream. It's the most accessible part with scientific bases and incredible scenery, like the photogenic Lemaire Channel.

Shore excursions might include Mikkelsen Harbour where gentoo penguins, snowy sheathbills and Antarctic Weddell seals haul out.

Please note: It may be necessary for Swan Hellenic to vary an expedition itinerary as a result of adverse weather or ocean conditions. Swan Hellenic will endeavour to ensure that any expedition takes place as close as reasonably practicable to the published expedition's schedules and itineraries but, at times, this may not be possible due to weather events beyond its control.

Overnight: Swan Hellenic SH Vega

Meals included: Breakfast; Lunch; Dinner

Day 13 Antarctic Peninsula - Marguerite Bay - Stonington Island - Neny Island

Marguerite Bay is a large, ice-filled bay located off the west coast of the Antarctic Peninsula. Surrounded by dramatic glaciers and ice shelves, it was discovered in 1909 by French explorer Jean-Baptiste Charcot, who named it after his wife.

The bay is rich in wildlife including seals, penguins and whales. This makes it an important site for scientific research on climate and marine ecosystems. Its remote and pristine environment make it a challenging destination yet a vital natural laboratory.

Stonington Point is a rocky headland on Stonington Island in Marguerite Bay, off the coast of the Antarctic Peninsula. It was the site of the British Antarctic Survey's Base E, which operated from 1945 to 1975 and played a key role in early Antarctic exploration and scientific research. The area is now a protected



24-DAY CRUISE PACKAGE | RUGBY LEAGUE VEGAS & LUXURY ANTARCTICA

The Itinerary

Itinerary 1

historic site under the Antarctic Treaty, preserving remnants of early polar infrastructure in one of the most remote environments on Earth.

Neny Island is a small, rocky island located just off the west coast of Graham Land in Marguerite Bay, Antarctica. It lies near the entrance to Neny Fjord and was first surveyed in the 1930s by British and American expeditions. The island served as a key base site for early Antarctic exploration due to its sheltered location and proximity to the mainland. Today, Neny Island is uninhabited but remains of historical interest for its role in early scientific missions.

Overnight: Swan Hellenic SH Vega

Meals included: Breakfast; Lunch; Dinner

Day 14 Antarctic Peninsula - Marguerite Bay - Horseshoe Island

Horseshoe Island is a crescent-shaped island in Marguerite Bay, off the west coast of the Antarctic Peninsula. It is named for its distinctive horseshoe-like shape and is home to the well-preserved British Base Y, established in 1955 for geological and meteorological research. The base is now a protected historic site and offers a rare glimpse into mid-20th century Antarctic exploration. Surrounded by rugged terrain and ice-filled waters, Horseshoe Island is also a haven for wildlife like penguins and seals.

Overnight: Swan Hellenic SH Vega

Meals included: Breakfast; Lunch; Dinner

Day 15 Antarctic Peninsula - Prospect Point & Fish Island

Prospect Point is a prominent headland located on the west coast of Graham Land in Antarctica, overlooking the entrance to Beascochea Bay. It was charted by British expeditions in the mid-20th century and became the site of a British research station, Base J, which operated from 1957 to 1959. The site offered strategic views for surveying and scientific observation, hence the name "Prospect". Today, the area is unoccupied but remains of historical interest within the context of Antarctic exploration.

Fish Island is a small, rocky island located off the west coast of Graham Land in Antarctica, near the entrance to Marguerite Bay. It lies close to the larger Mackerel Island and was named due to the nearby cluster of islands with fish-related names. The island was charted by British expeditions in the 1930s and later used as a point of reference during regional mapping and research missions. Though uninhabited, Fish Island is part of a remote and ecologically important area, often visited by scientists and occasional expedition cruises.

Overnight: Swan Hellenic SH Vega

Meals included: Breakfast; Lunch; Dinner

Offer available for a limited time or until sold out. TRIP A DEAL PTY LTD: 50149240433

Updated: 10 Jul 2025 11:46:38

Have a question about this deal? We're here to help.
Call our friendly team on 1300 158 912



24-DAY CRUISE PACKAGE | RUGBY LEAGUE VEGAS & LUXURY ANTARCTICA

The Itinerary

Itinerary 1

Day 16 Antarctic Peninsula - Petermann Island - Cruising Lemaire Channel - Port Charcot

Petermann Island is a small, rocky island located just south of the Lemaire Channel off the west coast of the Antarctic Peninsula. It was discovered during the German expedition of 1873 and named after German geographer August Petermann. The island is known for its scenic beauty and abundant wildlife, including colonies of gentoo and Adélie penguins. It also holds remnants of a historic French expedition hut from Jean-Baptiste Charcot's 1909 mission.

Today, Petermann Island is a popular stop for Antarctic cruises and serves as a key site for environmental monitoring and tourism. Cruising through the Lemaire Channel is one of the most breathtaking experiences in Antarctica. This narrow, iceberg-filled passage lies between the Antarctic Peninsula and Booth Island, flanked by snow-covered cliffs that rise dramatically from the sea. Often referred to as "Kodak Gap" for its stunning scenery, the channel is a highlight for expedition cruises, offering calm waters and frequent sightings of penguins, seals and whales. Its serene beauty and towering landscapes make it a favorite among photographers and travellers alike.

Port Charcot is a small natural harbour located on the northern coast of Booth Island, off the west coast of the Antarctic Peninsula. It was named after French explorer Jean-Baptiste Charcot, who used the site as a wintering base during his 1903–1905 Antarctic expedition. The area features remnants of that historic mission and offers panoramic views of icebergs and

surrounding mountains. Today, Port Charcot is a popular stop for Antarctic cruises, known for its rich wildlife and its historical significance in early polar exploration.

Overnight: Swan Hellenic SH Vega

Meals included: Breakfast; Lunch; Dinner

Day 17 Antarctic Peninsula - Mikkelsen Harbour

Mikkelsen Harbour is a sheltered bay on the south side of Trinity Island in the Palmer Archipelago, Antarctica. Named after Danish Arctic explorer Ejnar Mikkelsen, the harbour was first charted by the French Antarctic Expedition under Jean-Baptiste Charcot in the early 20th century. It served as a key anchorage for sealing and whaling vessels during the late 19th and early 20th centuries.

Today, the harbour is renowned for its historical significance and natural beauty. D'Hainaut Island, located within the harbour, is home to a Gentoo penguin colony and features an Argentine refuge hut, Refuge Caillet-Bois, established in 1954. The area is also known for its whale bones scattered along the beach, remnants of past whaling activities. Mikkelsen Harbour remains a popular stop for expedition cruises, offering opportunities for wildlife observation and exploration of its rich history.

Overnight: Swan Hellenic SH Vega

Meals included: Breakfast; Lunch; Dinner

Offer available for a limited time or until sold out. TRIP A DEAL PTY LTD: 50149240433

Updated: 10 Jul 2025 11:46:38

Have a question about this deal? We're here to help.
Call our friendly team on 1300 158 912





24-DAY CRUISE PACKAGE | RUGBY LEAGUE VEGAS & LUXURY ANTARCTICA

The Itinerary

Itinerary 1

Day 18 Antarctic Peninsula - South Shetland Islands - Deception Island - Elephant Point

Deception Bay is a volcanic caldera located on Deception Island, part of the South Shetland Islands off the coast of Antarctica. Known for its unique geography, the bay is surrounded by steep cliffs and features geothermal hot springs, making it one of the few places on Earth where visitors can experience a "hot" Antarctic environment. Deception Bay was historically used as a whaling station and is now a popular stop for expedition cruises. Its sheltered waters are ideal for landing while the bay is home to a variety of wildlife, including seals and seabirds.

The island itself is an active volcano, with occasional eruptions adding to the area's dramatic landscape. The South Shetland Islands are a group of rugged islands located off the northern tip of the Antarctic Peninsula. They are known for their dramatic landscapes including glaciers, volcanic peaks and vast ice sheets.

The islands were first sighted in 1819 and have since become an important site for scientific research and Antarctic tourism.

Notable islands include Deception Island, famous for its active volcano and geothermal hot springs, and King George Island, which is home to several research stations. The South Shetlands are a haven for wildlife including penguin colonies, seals and a variety of seabirds.

Overnight: Swan Hellenic SH Vega

Meals included: Breakfast; Lunch; Dinner

Day 19 Cruising

Overnight: Swan Hellenic SH Vega

Meals included: Breakfast; Lunch; Dinner

Day 20 Overnight Ushuaia, Argentina

Early evening arrival and overnight stay

Ushuaia is the southernmost city in the world, located on the southern tip of Argentina in Tierra del Fuego. Often referred to as the "End of the World", it sits between the Martial Mountain Range and the Beagle Channel. Ushuaia is a popular gateway for Antarctic cruises with its picturesque setting and proximity to the Southern Ocean. The city offers a range of outdoor activities including hiking, skiing and wildlife watching, and has a rich history tied to its early settlers, maritime heritage and penal colony. Its unique location makes it a fascinating blend of adventure and natural beauty.

Overnight: Swan Hellenic SH Vega

Meals included: Breakfast; Lunch; Dinner

Day 21 Ushuaia - Buenos Aires, Argentina

After disembarkation this morning, a transfer is provided to the airport for your charter flight to Buenos Aires. Upon arrival, a transfer is provided to your hotel for your night.

Overnight: Palladio Hotel McGallery or similar, Buenos Aires

Meals included: Breakfast

Offer available for a limited time or until sold out. TRIP A DEAL PTY LTD: 50149240433

Updated: 10 Jul 2025 11:46:38

Have a question about this deal? We're here to help.
Call our friendly team on 1300 158 912



24-DAY CRUISE PACKAGE | RUGBY LEAGUE VEGAS & LUXURY ANTARCTICA

The Itinerary

Itinerary 1

Day 22 Buenos Aires, Argentina - Australia (or New Zealand)

After check out this morning, a transfer is provided to Buenos Aires airport for your return flight to Australia (or New Zealand).

Meals included: Breakfast; In-Flight

Day 23 In Transit

Meals included: None

Day 24 Arrive Australia (or New Zealand)

Welcome home.



24-DAY CRUISE PACKAGE | RUGBY LEAGUE VEGAS & LUXURY ANTARCTICA

The Itinerary

Itinerary 2

Day 1 Australia (or New Zealand) - Las Vegas, Nevada USA

Today, make your own way to the airport for your flight to the USA. Upon arrival, make your own way to your hotel.

Optional Activity: Private Vehicle Transfer

Add a private vehicle transfer from the Las Vegas airport to your hotel. Please see current pricing in Important Information.

Overnight: Aria Resort and Hotel or similar, Las Vegas, Nevada

Meals included: In-Flight

Day 2 Free Day Las Vegas, Nevada - NRL Fan Fest

Enjoy the day at leisure in glittering Las Vegas or head off the beaten track to the nearby Grand Canyon or Valley of Fire State Park.

You might like to join the free NRL Fan Fest event on Fremont Street in downtown Las Vegas where the teams will be presented on stage. Catch live entertainment acts, enjoy the opportunity to snag some autographs, snap a selfie with the players and score giveaways at this free event.

Overnight: Aria Resort and Hotel or similar, Las Vegas, Nevada

Meals included: None

Day 3 Free Day Las Vegas, Nevada

Enjoy the day at leisure in glittering Las Vegas or head off the beaten track to the nearby Grand Canyon or Valley of Fire State Park.

Overnight: Aria Resort and Hotel or similar, Las Vegas, Nevada

Meals included: None

Day 4 NRL Game Day

Strap yourself in! Game day is here, with three huge back-to-back games hitting the field! In 2026, the NRL Telstra Premiership season will once again kick off on American soil at the renowned Allegiant Stadium. In the afternoon, make your own way to Allegiant Stadium in time for the celebrations to commence. Catch all the action between Super League sides Hull KR and Leeds Rhinos, then NRL showdowns between the Newcastle Knights and the North Queensland Cowboys, and the Canterbury-Bankstown Bulldogs and St. George Illawarra Dragons. There will also be loads of fan activities, food trucks, drinks, merchandise and much more available for purchase throughout the day!

Please note: Official game times have not yet been confirmed by the NRL. For the most up-to-date information closer to the event, check the NRL's official website, your game day tickets, and your travel pack information.

Overnight: Aria Resort and Hotel or similar, Las Vegas, Nevada

Meals included: None

Day 5 Las Vegas, Nevada - Buenos Aires, Argentina

At the appropriate time, make your own way to the airport for your flight to Buenos Aires, Argentina.

Optional Activity: Las Vegas Private Vehicle Transfer

Add a private vehicle transfer from your hotel to Las Vegas Airport. Please see current pricing in Important Information.

In flight

Meals included: In-Flight

Offer available for a limited time or until sold out. TRIP A DEAL PTY LTD: 50149240433

Updated: 10 Jul 2025 11:46:38

Have a question about this deal? We're here to help.
Call our friendly team on 1300 158 912



24-DAY CRUISE PACKAGE | RUGBY LEAGUE VEGAS & LUXURY ANTARCTICA

The Itinerary

Itinerary 2

Day 6 Buenos Aires, Argentina

Upon arrival in Buenos Aires, a transfer is arranged to your hotel. Once checked in, enjoy the remainder of your day at leisure.

Overnight: Buenos Aires Hilton or similar, Buenos Aires
Meals included: None

Day 7 Free Day Buenos Aires

The capital of Argentina is known for its rich cultural heritage, lively arts scene and stunning architecture. Often referred to as the "Paris of South America", the city blends European elegance with Latin American flair. You'll find wide boulevards, historic neighbourhoods and colourful street art.

Enjoy time to explore iconic landmarks like the Plaza de Mayo, the historic San Telmo district, and the famous Recoleta Cemetery where Eva Perón is buried. Buenos Aires is also renowned for its tango music and dance, as well as its diverse culinary scene. Don't miss delicious steaks and traditional Argentine dishes.

Overnight: Buenos Aires Hilton or similar, Buenos Aires
Meals included: None

Day 8 Buenos Aires - Ushuaia - Embark 13-Night Antarctic Circle Cruise

Departs: 18:00 hours

After check out this morning, a transfer is arranged to take you to the airport for your charter flight to Ushuaia. Nestled in the foothills of the snow-capped Martial Range, Ushuaia's colourful streets and mismatched buildings cascade from the imposing mountains to the shores of the Beagle Channel. As one of the world's southernmost cities, Ushuaia carries its 'end of the world' reputation well. The moody weather and dramatic surroundings certainly help.

Upon arrival, a transfer is provided to the ship. Once onboard, enjoy the remainder of the day at leisure exploring this luxury vessel before departing to one of the most captivating wilderness regions of the world.

Overnight: Swan Hellenic SH Vega
Meals included: Dinner

Day 9 Cruising

Sea days are rarely dull so take the time to sit back and let the world go by from the ship's observation decks. Enjoy the opportunity to mingle with other passengers or head to the library which is stocked full of reference books. Get an expert's view in one of the onboard lectures or perfect your photography skills with invaluable advice from our onboard professional photographers.

Overnight: Swan Hellenic SH Vega
Meals included: Breakfast; Lunch; Dinner



24-DAY CRUISE PACKAGE | RUGBY LEAGUE VEGAS & LUXURY ANTARCTICA

The Itinerary

Itinerary 2

Day 10 Cruising

A day at sea aboard SH Vega offers a blend of relaxation and enrichment amidst polar landscapes. Begin your morning with a stretch class or invigorate at the state-of-the-art gym. Enjoy panoramic views from the Observation Lounge, where the expedition team often shares insights through lectures and presentations. For a more tranquil experience, unwind in the sauna, soak in the jacuzzi or take a dip in the heated outdoor pool. Evenings can be spent savouring gourmet cuisine in the Swan Restaurant or enjoying tapas-style dining in the Club Lounge. Throughout the day, the ship's design ensures unobstructed views, allowing you to immerse yourself in the ever-changing polar scenery.

Overnight: Swan Hellenic SH Vega

Meals included: Breakfast; Lunch; Dinner

Day 11 Cruising

Enjoy adventure and relaxation with a day at sea aboard SH Vega. Designed for polar expeditions, the ship features unobstructed views throughout so you can immerse yourself in the surrounding scenery. The Swan's Nest viewing platform on Deck 6 provides a 180-degree panoramic vista, ideal for whale watching and photography.

For those seeking relaxation, the spa offers a sauna with a view while the heated outdoor pool is perfect for unwinding. Dining options include the Swan Restaurant, offering international cuisine, and the Club Lounge which serves tapas-style dishes.

With a capacity of just 158 guests, the SH Vega ensures an intimate and personalized experience, making each day at sea memorable.

Overnight: Swan Hellenic SH Vega

Meals included: Breakfast; Lunch; Dinner

Day 12 Antarctic Peninsula - Marguerite Bay - Jenny Island - Bongrain Point

Among captivating glaciers and majestic icebergs, the Antarctic Peninsula is where most visitors to the White Continent live their Antarctica dream. It's the most accessible part with scientific bases and incredible scenery, like the photogenic Lemaire Channel.

Shore excursions might include Mikkelsen Harbour where gentoo penguins, snowy sheathbills and Antarctic Weddell seals haul out.

Please note: It may be necessary for Swan Hellenic to vary an expedition itinerary as a result of adverse weather or ocean conditions. Swan Hellenic will endeavour to ensure that any expedition takes place as close as reasonably practicable to the published expedition's schedules and itineraries but, at times, this may not be possible due to weather events beyond its control.

Overnight: Swan Hellenic SH Vega

Meals included: Breakfast; Lunch; Dinner



24-DAY CRUISE PACKAGE | RUGBY LEAGUE VEGAS & LUXURY ANTARCTICA

The Itinerary

Itinerary 2

Day 13 Antarctic Peninsula - Marguerite Bay - Stonington Island - Neny Island

Marguerite Bay is a large, ice-filled bay located off the west coast of the Antarctic Peninsula. Surrounded by dramatic glaciers and ice shelves, it was discovered in 1909 by French explorer Jean-Baptiste Charcot, who named it after his wife.

The bay is rich in wildlife including seals, penguins and whales. This makes it an important site for scientific research on climate and marine ecosystems. Its remote and pristine environment make it a challenging destination yet a vital natural laboratory.

Stonington Point is a rocky headland on Stonington Island in Marguerite Bay, off the coast of the Antarctic Peninsula. It was the site of the British Antarctic Survey's Base E, which operated from 1945 to 1975 and played a key role in early Antarctic exploration and scientific research. The area is now a protected historic site under the Antarctic Treaty, preserving remnants of early polar infrastructure in one of the most remote environments on Earth.

Neny Island is a small, rocky island located just off the west coast of Graham Land in Marguerite Bay, Antarctica. It lies near the entrance to Neny Fjord and was first surveyed in the 1930s by British and American expeditions. The island served as a key base site for early Antarctic exploration due to its sheltered location and proximity to the mainland. Today, Neny Island is uninhabited but remains of historical interest for its role in early scientific missions.

Overnight: Swan Hellenic SH Vega

Meals included: Breakfast; Lunch; Dinner

Day 14 Antarctic Peninsula - Marguerite Bay - Horseshoe Island

Horseshoe Island is a crescent-shaped island in Marguerite Bay, off the west coast of the Antarctic Peninsula. It is named for its distinctive horseshoe-like shape and is home to the well-preserved British Base Y, established in 1955 for geological and meteorological research. The base is now a protected historic site and offers a rare glimpse into mid-20th century Antarctic exploration. Surrounded by rugged terrain and ice-filled waters, Horseshoe Island is also a haven for wildlife like penguins and seals.

Overnight: Swan Hellenic SH Vega

Meals included: Breakfast; Lunch; Dinner

Day 15 Antarctic Peninsula - Prospect Point & Fish Island

Prospect Point is a prominent headland located on the west coast of Graham Land in Antarctica, overlooking the entrance to Beascochea Bay. It was charted by British expeditions in the mid-20th century and became the site of a British research station, Base J, which operated from 1957 to 1959. The site offered strategic views for surveying and scientific observation, hence the name "Prospect". Today, the area is unoccupied but remains of historical interest within the context of Antarctic exploration.

Fish Island is a small, rocky island located off the west coast of Graham Land in Antarctica, near the entrance to Marguerite Bay. It lies close to the larger Mackerel Island and was named due to the nearby cluster of islands with fish-related names. The island was charted by British expeditions in the 1930s and later used as



24-DAY CRUISE PACKAGE | RUGBY LEAGUE VEGAS & LUXURY ANTARCTICA

The Itinerary

Itinerary 2

a point of reference during regional mapping and research missions. Though uninhabited, Fish Island is part of a remote and ecologically important area, often visited by scientists and occasional expedition cruises.

Overnight: Swan Hellenic SH Vega

Meals included: Breakfast; Lunch; Dinner

Day 16 Antarctic Peninsula - Petermann Island - Cruising Lemaire Channel - Port Charcot

Petermann Island is a small, rocky island located just south of the Lemaire Channel off the west coast of the Antarctic Peninsula. It was discovered during the German expedition of 1873 and named after German geographer August Petermann. The island is known for its scenic beauty and abundant wildlife, including colonies of gentoo and Adélie penguins. It also holds remnants of a historic French expedition hut from Jean-Baptiste Charcot's 1909 mission.

Today, Petermann Island is a popular stop for Antarctic cruises and serves as a key site for environmental monitoring and tourism. Cruising through the Lemaire Channel is one of the most breathtaking experiences in Antarctica. This narrow, iceberg-filled passage lies between the Antarctic Peninsula and Booth Island, flanked by snow-covered cliffs that rise dramatically from the sea. Often referred to as "Kodak Gap" for its stunning scenery, the channel is a highlight for expedition cruises, offering calm waters and frequent sightings of penguins, seals and whales. Its serene beauty and towering landscapes make it a favorite among photographers and travellers alike.

Port Charcot is a small natural harbour located on the northern coast of Booth Island, off the west coast of the Antarctic Peninsula. It was named after French explorer Jean-Baptiste Charcot, who used the site as a wintering base during his 1903–1905 Antarctic expedition. The area features remnants of that historic mission and offers panoramic views of icebergs and surrounding mountains. Today, Port Charcot is a popular stop for Antarctic cruises, known for its rich wildlife and its historical significance in early polar exploration.

Overnight: Swan Hellenic SH Vega

Meals included: Breakfast; Lunch; Dinner

Day 17 Antarctic Peninsula - Mikkelsen Harbour

Mikkelsen Harbour is a sheltered bay on the south side of Trinity Island in the Palmer Archipelago, Antarctica. Named after Danish Arctic explorer Ejnar Mikkelsen, the harbour was first charted by the French Antarctic Expedition under Jean-Baptiste Charcot in the early 20th century. It served as a key anchorage for sealing and whaling vessels during the late 19th and early 20th centuries.

Today, the harbour is renowned for its historical significance and natural beauty. D'Hainaut Island, located within the harbour, is home to a Gentoo penguin colony and features an Argentine refuge hut, Refuge Caillet-Bois, established in 1954. The area is also known for its whale bones scattered along the beach, remnants of past whaling activities. Mikkelsen Harbour remains a popular stop for expedition cruises, offering opportunities for wildlife observation and exploration of its rich history.

Offer available for a limited time or until sold out. TRIP A DEAL PTY LTD: 50149240433

Updated: 10 Jul 2025 11:46:38

Have a question about this deal? We're here to help.
Call our friendly team on 1300 158 912

15

FREQUENT
FLYER



Trip
aDeal



24-DAY CRUISE PACKAGE | RUGBY LEAGUE VEGAS & LUXURY ANTARCTICA

The Itinerary

Itinerary 2

Overnight: Swan Hellenic SH Vega

Meals included: Breakfast; Lunch; Dinner

Day 18 Antarctic Peninsula - South Shetland Islands - Deception Island - Elephant Point

Deception Bay is a volcanic caldera located on Deception Island, part of the South Shetland Islands off the coast of Antarctica. Known for its unique geography, the bay is surrounded by steep cliffs and features geothermal hot springs, making it one of the few places on Earth where visitors can experience a "hot" Antarctic environment. Deception Bay was historically used as a whaling station and is now a popular stop for expedition cruises. Its sheltered waters are ideal for landing while the bay is home to a variety of wildlife, including seals and seabirds.

The island itself is an active volcano, with occasional eruptions adding to the area's dramatic landscape. The South Shetland Islands are a group of rugged islands located off the northern tip of the Antarctic Peninsula. They are known for their dramatic landscapes including glaciers, volcanic peaks and vast ice sheets.

The islands were first sighted in 1819 and have since become an important site for scientific research and Antarctic tourism. Notable islands include Deception Island, famous for its active volcano and geothermal hot springs, and King George Island, which is home to several research stations. The South Shetlands are a haven for wildlife including penguin colonies, seals and a variety of seabirds.

Overnight: Swan Hellenic SH Vega

Meals included: Breakfast; Lunch; Dinner

Day 19 Cruising

Overnight: Swan Hellenic SH Vega

Meals included: Breakfast; Lunch; Dinner

Day 20 Overnight Ushuaia, Argentina Early evening arrival and overnight stay

Ushuaia is the southernmost city in the world, located on the southern tip of Argentina in Tierra del Fuego. Often referred to as the "End of the World", it sits between the Martial Mountain Range and the Beagle Channel. Ushuaia is a popular gateway for Antarctic cruises with its picturesque setting and proximity to the Southern Ocean. The city offers a range of outdoor activities including hiking, skiing and wildlife watching, and has a rich history tied to its early settlers, maritime heritage and penal colony. Its unique location makes it a fascinating blend of adventure and natural beauty

Overnight: Swan Hellenic SH Vega

Meals included: Breakfast; Lunch; Dinner

Offer available for a limited time or until sold out. TRIP A DEAL PTY LTD: 50149240433

Updated: 10 Jul 2025 11:46:38

Have a question about this deal? We're here to help.
Call our friendly team on 1300 158 912



24-DAY CRUISE PACKAGE | RUGBY LEAGUE VEGAS & LUXURY ANTARCTICA

The Itinerary

Itinerary 2

Day 21 Disembark Ushuaia - Embark 13-night Patagonian Fjords - Puerto Williams, Chile

Puerto Williams is a remote town on Navarino Island in Chile. It's often recognised as the southernmost city in the world. Situated on the Beagle Channel, it lies approximately 35 km southeast of Ushuaia, Argentina. With a population of around 2,000 people, the town serves as a hub for scientific research and adventure tourism. It's the gateway to the Dientes de Navarino trek, the southernmost multi-day hike globally, offering trekkers a chance to explore sub-Antarctic landscapes.

Please note this is a back-to-back voyage, and there is a possibility of a stateroom change in Ushuaia. In the event there is the attentive cabin stewards will seamlessly transfer your belongings between staterooms where required, ensuring a hassle-free experience. When the appointed hour arrives, you're welcome to reboard the SH Vega, embarking on the next leg of your Patagonia and Chilean Fjords cruise.

Overnight: Swan Hellenic SH Vega
Meals included: Breakfast; Lunch; Dinner

Day 22 Garibaldi Glacier

The Garibaldi Glacier is a striking glacier located in the southern part of Chile, within Bernardo O'Higgins National Park. It flows from the Southern Patagonian Ice Field into the head of the Garibaldi Fjord. Known for its dramatic blue ice and towering ice cliffs, the glacier is a popular destination for trekkers and adventurers exploring the rugged wilderness of the Chilean Patagonia. The glacier is also an important site for scientific research, offering insights into climate change and glaciology. Its remote and pristine beauty makes it a highlight of the region's natural landscape.

Overnight: Swan Hellenic SH Vega
Meals included: Breakfast; Lunch; Dinner

Day 23 Cruising

Overnight: Swan Hellenic SH Vega
Meals included: Breakfast; Lunch; Dinner



24-DAY CRUISE PACKAGE | RUGBY LEAGUE VEGAS & LUXURY ANTARCTICA

The Itinerary

Itinerary 2

Day 24 Cruising Angostura Kirke - Puerto Natales

Cruising through Angostura Kirke offers a thrilling and scenic passage through one of Chile's most dramatic waterways. This narrow channel, situated between the Gulf of Peñas and the Gulf of Corcovado, is renowned for its challenging navigation due to strong currents and unpredictable winds. As such, it demands precise timing and skilful manoeuvring by the crew. Despite these challenges, the journey rewards travellers with breathtaking views of mist-shrouded mountains, cascading waterfalls and rich marine life. Look out for playful dolphins, sleek seals and a variety of seabirds amidst the rugged Patagonian landscape.

Overnight: Swan Hellenic SH Vega

Meals included: Breakfast; Lunch; Dinner

Day 25 Puerto Natales

Puerto Natales is a picturesque port town located in southern Chile, nestled on the shores of the Última Esperanza Sound in Patagonia. Known as the gateway to Torres del Paine National Park, it serves as a base for travellers exploring the stunning landscapes of southern Chile. The town is known for its charming wooden architecture, vibrant culture, and outdoor adventure opportunities like hiking and kayaking. Puerto Natales also offers a glimpse into Patagonian history with a rich maritime heritage and proximity to the region's early settlers.

Overnight: Swan Hellenic SH Vega

Meals included: Breakfast; Lunch; Dinner

Day 26 Puerto Natales - Cruising Angostura Kirke

Angostura Kirke, a narrow waterway that connects the Gulf of Peñas with the Gulf of Corcovado in Chile, demands precise timing and skilful navigation. Strong currents and winds heighten the challenge, yet the passage rewards with breathtaking scenery and diverse wildlife. The area is home to playful dolphins, sleek seals and soaring seabirds amid mist-shrouded mountains and cascading waterfalls.

Overnight: Swan Hellenic SH Vega

Meals included: Breakfast; Lunch; Dinner

Day 27 Pio XI Glacier - Cruising Angostura Inglesa

The Pio XI Glacier, also known as the Brüggen Glacier, is among the largest glaciers in Chile and one of the largest in the Southern Hemisphere. Located in the Aysén Region of Patagonia, it stretches over 66 kilometres in length and is known for its dramatic size and stunning beauty. The glacier flows from the Southern Patagonian Ice Field into the fjords of the Aysén Channel. It's particularly famous for its calving icebergs and towering ice cliffs, which make for a breathtaking sight. The Pio XI Glacier is a popular stop for expedition cruises, offering a glimpse into the pristine wilderness of southern Chile.

Angostura Inglesa rewards travellers with breathtaking views of rugged mountains, lush forests and pristine waters. Wildlife sightings are common including dolphins, seals and a variety of seabirds. The remote and dramatic landscapes make this passage a highlight for those exploring the southernmost regions of Chile.



24-DAY CRUISE PACKAGE | RUGBY LEAGUE VEGAS & LUXURY ANTARCTICA

The Itinerary

Itinerary 2

Overnight: Swan Hellenic SH Vega

Meals included: Breakfast; Lunch; Dinner

Day 28 Tortel

Tortel is a remote village located in the Aysén Region of southern Chile, known for its unique wooden walkways and charming coastal setting. Situated at the confluence of the Baker River and the Pacific Ocean, Tortel is surrounded by pristine wilderness including dense forests and fjords. The town's picturesque landscape is complemented by its distinctive architecture with wooden boardwalks replacing traditional streets due to the challenging geography of the area. Tortel is a gateway to exploring the natural beauty of Patagonia.

Overnight: Swan Hellenic SH Vega

Meals included: Breakfast; Lunch; Dinner

Day 29 Cruising

Overnight: Swan Hellenic SH Vega

Meals included: Breakfast; Lunch; Dinner

Day 30 Castro

Castro is a vibrant town on the island of Chiloé in southern Chile, renowned for its colourful wooden houses (called palafitos) which stand on stilts along the waterfront. As the capital of the Chiloé Province, Castro is a cultural hub with rich history and a blend of indigenous and Spanish influences. The town is famous for its picturesque landscapes, UNESCO-listed wooden churches and delicious local seafood. Make time to explore nearby national parks, and experience the unique folklore and traditions of the Chiloé archipelago.

Overnight: Swan Hellenic SH Vega

Meals included: Breakfast; Lunch; Dinner

Day 31 Puerto Montt

Puerto Montt is a coastal city in southern Chile, serving as the capital of the Los Lagos Region and a vital gateway to Patagonia. Founded in 1853 and named after then-president Manuel Montt, the city was established by German immigrants, which influenced its architecture and cultural heritage. Puerto Montt is a bustling port town known for its seafood industry, particularly salmon farming. The city offers a mix of urban amenities and access to natural attractions, including nearby lakes, volcanoes and the Chiloé Archipelago.

Overnight: Swan Hellenic SH Vega

Meals included: Breakfast; Lunch; Dinner





24-DAY CRUISE PACKAGE | RUGBY LEAGUE VEGAS & LUXURY ANTARCTICA

The Itinerary

Itinerary 2

Day 32 Niebla

Niebla is a charming town located in the Los Rios Region of southern Chile, near the city of Valdivia. The area is home to the well-preserved Niebla Fort, a Spanish colonial-era fortress that once defended the region from pirate attacks. The town is nestled along the coast, offering beautiful views of the Valdivia River and the Pacific Ocean. Visitors to Niebla can explore the fort, enjoy the local beaches and experience the serene natural surroundings. Its proximity to Valdivia makes it an easy day trip to enjoy both cultural and outdoor activities.

Overnight: Swan Hellenic SH Vega

Meals included: Breakfast; Lunch; Dinner

Day 33 Cruising

Overnight: Swan Hellenic SH Vega

Meals included: Breakfast; Lunch; Dinner

Day 34 Valparaiso - Santiago

After breakfast this morning, it's time to disembark the ship where a transfer is arranged to your hotel for your last night. Once checked in, the remainder of the day is at leisure.

In Santiago, you can enjoy a mix of history, culture and natural beauty. Highlights include a visit to Plaza de Armas and the stunning views from San Cristóbal Hill. Art lovers can enjoy the Museo de Bellas Artes, while food enthusiasts can savour local

flavours at the bustling Mercado Central. For a taste of local culture, the bohemian Bellavista neighbourhood offers street art, live music and cafes.

Overnight: Pullman Santiago Vitacura or similar, Santiago

Meals included: Breakfast

Day 35 Santiago, Chile - Australia (or New Zealand)

After check out this morning, a transfer is provided to the airport for your homeward bound flight.

in flight

Meals included: Breakfast

Day 36 In Transit

Meals included: None

Day 37 Arrive Australia (or New Zealand)

Welcome home.

Meals included: None



24-DAY CRUISE PACKAGE | RUGBY LEAGUE VEGAS & LUXURY ANTARCTICA

Tour Inclusions

HIGHLIGHTS

- Gold ticket for the opening round of the 2026 NRL Telstra Premiership season at Allegiant Stadium
- Enjoy access to three huge back-to-back games of Rugby League
- Walk down the neon-soaked Strip, the centre of Sin City
- Set sail aboard Swan Hellenic's SH Vega luxury expedition ship
- Experience a once-in-a-lifetime cruise to Antarctica
- Discover the most remote and pristine destinations on Earth
- Search for inquisitive penguins, majestic blue whales, fur seals and more
- Explore uncharted territories with included zodiacs while cruising
- Choose Itinerary 2 for back-to-back cruises of Antarctica and Chile

FLIGHTS

- All international full-service flights (economy class), surcharges may apply
- Itinerary 1: Return charter flights from Buenos Aires to Ushuaia
- Itinerary 2: One-way charter flight from Buenos Aires to Ushuaia

CRUISE

- Itinerary 1: 13-night Antarctic Circle expedition cruise
- Itinerary 2: Enjoy seamless back-to-back cruising with Swan Hellenic, a 13-night Antarctic Circle expedition cruise followed by a 13-night Patagonian Fjords Expedition Cruise
- Gratuities included for the ship's crew
- Branded Swan Hellenic expedition parka
- Use of rubber boots in polar regions
- One selected shore excursion/expedition activity per port of call (kayaks not included, bookable for a fee on board)
- Lecture programs by an experienced expedition team and guest speakers
- All 12-person hard-hulled Zodiac landings included
- Standard Wi-Fi
- Self-service laundry

ACCOMMODATION

- Itinerary 1
 - 4 nights of 5-star hotel accommodation in Las Vegas, Nevada
 - 3 nights of 5-star hotel accommodation in Buenos Aires, Argentina
- Itinerary 2
 - 4 nights of 5-star hotel accommodation in Las Vegas, Nevada
 - 2 nights of 5-star hotel accommodation in Buenos Aires, Argentina
 - 1-night of 5-star hotel accommodation in Santiago, Chile



24-DAY CRUISE PACKAGE | RUGBY LEAGUE VEGAS & LUXURY ANTARCTICA

Tour Inclusions

DINING

Itinerary 1: 39 meals including all while cruising
Itinerary 2: 77 meals including all while cruising

Around-the-clock access to coffee, tea and soft drinks onboard
Curated selection of alcoholic beverages while cruising
24-hour room service

ESSENTIALS

Gold ticket to the NRL Telstra Premiership at Allegiant Stadium
Cruise port charges, taxes and gratuities
Airline taxes and surcharges
Las Vegas resort fees

GAME DAY

Super League: Hull KR vs Leeds Rhinos
NRL: Newcastle Knights vs the North Queensland Cowboys
NRL: Canterbury-Bankstown Bulldogs vs St. George Illawarra Dragons

TRANSFERS

Itinerary 1
Day 5: Airport to hotel
Day 7: Hotel to airport, and airport to port
Day 20: Port to airport, and airport to Hotel
Day 21: Hotel to airport
Itinerary 2
Day 5: Airport to hotel
Day 7: Hotel to airport, and airport to port
Day 33: Port to hotel
Day 34: Hotel to airport

Important Information

**Please note: All information provided in this brochure is subject to both change and availability. Prior to purchase please check the current deal for up-to-date information. If you have already purchased this deal, the terms and conditions on your Purchase Confirmation apply and take precedence over the information in this brochure.*

Booking Information

After purchase, you will receive a receipt and a Purchase Confirmation, directing you to an online Passenger Information Form. You must complete the Passenger Information Form within 72 hours of purchase.

Any special requests, preferences and optional extras MUST be clearly stated in your Passenger Information Form. Any change requested after submitting your Passenger Information Form cannot be guaranteed, is strictly subject to availability and will incur surcharges as outlined in the Schedule of Fees below.

Please note: All countries and territories have different entry requirements in relation to vaccinations, quarantine/isolation periods and travel restrictions. Due to the evolving nature, we would ask all of our customers to monitor, meet and adhere to the specific requirements of their intended destination(s) in the lead-up to and immediately before travel, as well as any requirements post-travel upon their return.

Our Policies

Cancellation & Refund Policy

By placing a booking with us, you acknowledge the following important information:

- **we act as your booking agent ;**

TripADeal is a booking services provider, and curates the Travel Offers available on our website. We act as your booking agent, and we receive payment for the Booking Services as part of the booking price, however, we do not provide any of the Travel Services (flights, accommodation, tours or other products or services) included in your booking – the Travel Services are provided by a number of third party Travel Suppliers.

- **each booking is unique ;** our Travel Offers are made up of a variety of different components and are, during the booking process, uniquely tailored to suit your requirements, for example, departure dates and ports, flight and room upgrades, tour inclusions, etc.

- **changes/modifications to your booking may not be possible ;** once your booking has been made, changes or modifications may not be possible, and where possible, may incur a fee. It is important to ensure that the information you provide during the booking process is accurate and up to date, and that you read the Travel Offer carefully before placing your order.

- **Travel Offers are a package ;** our Travel Offers have been curated into package offerings and must be used as a package – individual components cannot be used independently of the full package offering.

- **our Travel Offers are generally non-refundable ;** in order to provide great value Travel Offers, we work with a variety of Travel Suppliers to find the best deals – this often means the Travel Suppliers' offerings are non-refundable to ensure the best price. We recommend that you obtain travel insurance as soon as you make a booking with us.

To read more about our Cancellation and Refund Policy, please [click here](#).

General Terms & Conditions

By placing your booking with us, you acknowledge and agree to our [Terms & Conditions](#), [Privacy Policy](#) and [Cancellation Policy](#).

Offer Essentials

This Travel Offer is valid for travel on selected dates until the 25th February 2026.

This Travel Offer is priced per person based on a twin share.

Departure Dates & Surcharges

See checkout for live dates and availability.

Single Traveller Supplement

For solo travellers, a mandatory single supplement applies.

Itinerary 1

Balcony: \$20,000

Itinerary 2

Oceanview: \$26,500

Balcony: \$29,000

Please note: Accommodation for single customers who are travelling on a tour or cruise package may be in a single room, depending on availability.

Child Policy

- No child discounts are offered. The full price applies to all children travelling with their parents.
- Valid for children 8 years old and over.

Please note: Children must be accompanied by a responsible adult 21 years old and over to travel. No unaccompanied minors are allowed.

Flights

Departure Cities

Sydney, *Melbourne, *Brisbane, *Adelaide, *Perth, Auckland

Departure City Surcharges

- Melbourne: \$200 per person
- Brisbane: \$200 per person
- Adelaide: \$300 per person
- Perth: \$500 per person

International Full-Service Flight(s)

- Cabin Class: Economy Class

Please note: We cannot accommodate one-way flights. Travellers must take all included flights within the package, and any flights intentionally forfeited will result in later flights being subject to cancellation.

Preferred Airline Surcharge

Not available

Arrive Early & Stay Behind Options

Arrive Early

Las Vegas - From \$300 per person, subject to availability.

Important Information

San Francisco - From \$400 per person, subject to availability.
Los Angeles - From \$400 per person, subject to availability.

Stay Behind

Buenos Aires - From \$300 per person, subject to availability (Itinerary 1 only).
Santiago - From \$300 per person, subject to availability (Itinerary 2 only).

Please note:

- *This fee does not include extra nights' accommodation, meals or airport transfers.*
- *If you select to Arrive Early or Stay Behind in a city other than the one where the tour starts or ends, the package will include an internal flight to your destination. If you wish to forfeit this flight, please advise our friendly team at the time of purchase. Please note that the cost does not change when you choose to forfeit your connecting flight.*
- *Flight booking changes or cancellations after air tickets have been issued are not guaranteed and may incur additional fees and fare difference, subject to the airline cancellation and change policies.*
- *Flight changes are subject to availability at the time of booking.*
- *A high-season Arrive Early or Stay Behind can be purchased for an additional charge, subject to availability. For pricing, please refer to the cart.*
- *You can arrive early, up to 60 days before your package's start date, and/or stay behind until 60 days after your package's end date. Should you wish to arrive earlier or stay behind for more than 60 days, please contact us to request availability. Additional costs may apply.*
- *High season surcharges apply to flights departing between the below date ranges:*

16th June 2025 - 20th July 2025

15th September 2025 - 12th October 2025

1st December 2025 - 19th December 2025

20th December 2025 - 4th January 2026

5th January 2026 - 31st January 2026

3rd April 2026 - 20th April 2026

26th June 2026 - 17th July 2026

18th September 2026 - 9th October 2026

12th December 2026 - 18th December 2026

19th December 2026 - 3rd January 2027

4th January 2027 - 26th January 2027

Stopover Packages

- Santiago, Chile (permitted on the return flights, Itinerary 1 only)

Includes:

- 2, 3 or 5 nights in 4-star accommodation
- Daily breakfast
- Return airport transfers

For pricing, please refer to the payment cart at checkout.

Please note:

- *When a pre and post-tour stopover is chosen, the same stopover location must be chosen each way, due to the airline used.*
- *When selecting an Arrive Early or Stay Behind in conjunction with a Stopover Package, the stopover will take place after the departure date you select for your Arrive Early or Stay Behind.*
- *Stopover packages are subject to availability.*
- *In the event that a purchased stopover package and a purchased preferred airline upgrade are not compatible, you will have the option to receive a refund for the preferred airline upgrade or be offered an alternative stopover city option, e.g if you choose to fly with Singapore Airlines you cannot stopover in Dubai.*
- *Blackout dates apply to flights departing between the below date ranges:*

Christmas and New Years Eve: 22

December 2025 - 2 January 2026

****FIFA WORLD CUP - USA, CANADA,**

MEXICO - 01 June to 20 July 2026***

Christmas and New Year's Eve: 18

December 2026 - 3 January 2027

Flight Class Upgrades

Not available

Outbound Flights

Please note: Due to flight scheduling and availability, some departures may occur on Day 0. Affected customers must be available

to depart the day before. Flight times will be indicated on your final documents, issued 4-6 weeks before departure.

Missed Flights

If you fail to arrive for your outbound flight, you risk all flight and land arrangements in your destination being automatically cancelled by the airlines and land operator, respectively. Additional fees may apply to reinstate these services. If you miss your flight for whatever reason, please contact us as soon as possible to make arrangements.

Cruise

Swan Hellenic's SH Vega

Introducing the SH Vega, a sparkling gem embarking on its maiden voyage in July 2022. This 5-star boutique ship, designed with Scandinavian elegance, offers an intimate immersion in the voyage's splendour. Allow yourself a moment of reprieve to acquaint yourself with these extraordinary expedition vessels. Boasting a PC5 ice-strengthened hull and expansive stabilisers, your journey will be exceptionally smooth. With just 120-140 crew members and 152-196 guests spread across 9 decks, an intimate experience awaits. The generous public spaces ensure panoramic views, keeping the destination ever-present. Deck 8 offers unparalleled vistas. Following a workout in the state-of-the-art gym, luxuriate in the sauna or jacuzzi while relishing the breathtaking scenery.

At the Swan Restaurant, savor breakfast, lunch, and dinner featuring international and locally-inspired cuisine, spotlighting the finest regional ingredients from your unique destinations. Deck 7 reveals a heated outdoor pool and inviting poolside seating for scenic indulgence. Unwind in the Observation Lounge with your preferred libation, forging connections with fellow guests. The Club Lounge, combining 24-hour tapas-style dining with sweeping ocean vistas, is a sanctuary of indulgence. Anticipate a voyage that marries luxury with adventure.

It may be necessary for Swan Hellenic to

Important Information

vary an expedition itinerary as a result of adverse weather or ocean conditions. Swan Hellenic will endeavour to ensure that any expedition takes place as close as reasonably practicable to the published expedition's schedules and itineraries but, at times, this may not be possible due to weather events beyond its control.

Onboard Currency

\$ USD

Cabins/Staterooms

Oceanview Staterooms: 19m² - 20m²

Light, bright and crafted from natural materials, Oceanview staterooms feature 2 single beds, a bedroom and living room and a luxurious ensuite bathroom. All feature panoramic sea views, original works of art, plush couches, premium pocket-sprung mattresses, ensuite bathrooms with glass-enclosed rain showers, and Egyptian cotton towels, bathrobes, and sheets. A pillow menu offers customised head and neck comfort during rest. At the same time, a large flat-screen TV, an espresso machine with Illy premium coffee, tea-making facilities with the finest Kusmi teas, and a minibar with refreshments enhance relaxation at any time. In-room dining is, of course, available at all hours.

Balcony Staterooms: 25m²

Staterooms feature 2 single beds, a bedroom, a living room, a luxurious bathroom and your own 5m² balcony. All feature panoramic sea views, original works of art, plush couches, premium pocket-sprung mattresses, ensuite bathrooms with glass-enclosed rain showers, and Egyptian cotton towels, bathrobes, and sheets. A pillow menu offers customised head and neck comfort during rest. At the same time, a large flat-screen TV, an espresso machine with Illy premium coffee, tea-making facilities with the finest Kusmi teas, and a minibar with refreshments enhance relaxation at any time. In-room dining is, of course, available at all hours.

Please note:

- All cabins are subject to availability; some cabins may have restricted views.
- Cruise cabins are booked on a guaranteed basis and are assigned by the cruise line prior to departure.

Cruise Arrival & Departure Times

Please keep in mind that the provided cruise arrival and departure times are an approximate and will be finalised upon receipt of your cruise tickets.

Accommodation

Accommodation Used

5-Star Properties (Self-Rated)

- Las Vegas: Aria Resort and Casino
- Buenos Aires: Buenos Aires Hilton, Palladio Hotel McGallery
- Santiago: Pullman Santiago

Please note: Accommodation/rooms offered are based on a lead-in room type and are subject to availability based on seasonality. In the instance a property is not available, a similar standard of accommodation will be provided. Properties will be confirmed and included in your travel pack, which you will receive 4-6 weeks before travel.

Extra Nights

Not available.

Please note: If you are interested in booking additional nights of accommodation pre or post-tour, please wait until you receive your travel documentation approximately 4-6 weeks before departure for the confirmed list of hotels. If booking your own additional accommodation directly with the hotel, please be aware that you may be required to change rooms at the start/end of your tour.

Maximum Room Capacity

2 people.

Triple Share

Not available.

Bedding Configuration

Twin or double (subject to availability).

Event Information

Fan Fest Event

Date: 26 February 2026

Location: Fremont Street - Downtown Las Vegas

Seating Arrangements

If you are organising a group booking, please prioritise booking in one transaction to ensure we can guarantee you can sit together at the game.

Game Day Details

Event: Rugby League Las Vegas 2026

Date: Saturday 28 February, 2026

Venue: Allegiant Stadium

Location: Las Vegas, Nevada, USA

Game Day Tickets

Included in your NRL Las Vegas Experience are Gold tickets to attend the opening round of the 2026 NRL Premiership season at Allegiant Stadium in Las Vegas. Allegiant Stadium is a mobile-only venue. This means your ticket is available to present on your mobile phone only, PDF/paper tickets are not valid. Mobile ticketing allows you to manage and transfer your tickets conveniently and minimises the risk of lost or counterfeit tickets. Your tickets will be available to view/use on the Las Vegas Raiders + Allegiant Stadium App, and we encourage all fans heading to the game to download the App early and familiarise themselves with the process. You can download the App via the Apple App Store or Google Play [here](#). Once downloaded, you will be required to create a free account to access and save your tickets.

Please note:

- You must use the same email address for your Raiders account as used on your travel booking to ensure the tickets display in your account. [See the PDF instructions here](#), or visit the Raiders Mobile Ticketing link below and follow the steps for more information about accessing your tickets.
- You will receive your tickets at least four weeks prior to departure (tickets may not appear in your account prior to this).

Important Information

Merchandise

Customers will be able to collect their 2026 Rugby League Las Vegas cap from a collection point at Allegiant Stadium on game day. Further details about where and how to pick this up will be provided closer to the event in your travel pack information (via email).

Getting To The Event

Plan your trip in advance to ensure getting to and from Allegiant Stadium is part of the game-day fun.

- The best walking option for accessing Allegiant Stadium is from Las Vegas Blvd via Hacienda Bridge, which will be closed to automobile traffic on select event-days, allowing fans to safely walk across.
- Rideshare options are available at Allegiant Stadium. Rideshare pick-up and drop-off is located in Lot N, just north of the stadium.
- Once you are on the Strip, the RTC's Deuce bus runs 24/7 every 15 minutes from 57 stops along Las Vegas Blvd with the closest stop near Hacienda Bridge at Mandalay Bay. A 24-hour pass, priced at \$8 USD, allows you to ride the Deuce to the game, back and anywhere else on the Strip you would like to go. Passes can be purchased on the RTC app.
- A dedicated area west of the Stadium near Diablo and Procyon is available for taxis, shuttles, and general drop-off and pick-up before and after games.
- Single-event or game-day parking passes are available via the SpotHero app and must be purchased in advance.
- If you are driving your own car, allow plenty of time to get to the Stadium, many of the streets in the area will be converted to one-way on game or event days. Vehicles are not permitted to park overnight prior to game day.

Please note: A reminder also that Allegiant Stadium is a cashless stadium. Payment for parking and concessions must be made by debit/credit card or mobile payment.

Related Links

- [Ticketmaster Mobile Ticketing](#)
- [Allegiant Stadium: Planning Your Visit](#)

- [Allegiant Stadium](#)
- [NRL Ticket Terms Conditions](#)
- [Spot Hero Parking](#)

Optional Tours/activities

Day 1: Private transfer from airport to hotel (Las Vegas) - \$90 per person

Day 5: Private transfer from hotel to airport (Las Vegas) - \$90 per person

Please note:

- *Optional transfers cannot be booked when an early arrival or stay behind has been arranged*
- *Some tours or shore excursions require minimum numbers to operate.*
- *Shore excursions can be booked/reserved directly with the cruise line before travel (subject to availability)*
- *Shore excursions can also be booked whilst onboard (subject to availability).*
- *Shore excursion programmes and itineraries may vary depending on local conditions and/or any unforeseen events concerning the timing on the day of the tour. Some excursions are very popular, and therefore availability cannot always be guaranteed, it is advisable to book in advance to avoid disappointment.*

Exclusions

- Visa fees and requirements
- Domestic transfers and flights not stated in the deal offer
- Meals/beverages not stated in the deal offer
- Optional gratuities/tipping
- Optional activities/tours
- Personal expenses
- Travel insurance
- Any costs associated with an interruption to your tour as a result of an airline schedule change or cancellation
- Mandatory city tax

Gratuities/tipping

Please note: Tipping for services provided is always a matter of personal discretion; however, please be aware that many locals consider tipping part of their normal remuneration, and they may approach you

for payment; there's no need to be intimidated by the request.

Cruise

Gratuities (tips) are included for the cruise staff's services throughout this tour's cruise component.

Other Important Information

CLIMATE & AVERAGE TEMPERATURES

Las Vegas

In Las Vegas, February brings cool but generally mild winter weather, with daytime temperatures averaging between 8°C and 18°C. Nights can be chilly, often dropping to around 4°C or lower. While snow is extremely rare in the city itself, the surrounding mountains may have snow-capped peaks. Rainfall is minimal, averaging just a few days during the month, and sunshine is still plentiful, making February a comfortable time to visit with fewer crowds and pleasant conditions for outdoor activities.

Buenos Aires, Argentina

In early March, Buenos Aires typically experiences warm weather as it transitions from summer to autumn. The average temperature during this time of year ranges from around 20°C to 28°C during the day, with cooler temperatures in the evenings. However, it's important to note that weather can vary, so it's advisable to check closer to your travel date for the most accurate forecast.

Antarctica

In Antarctica, March marks the end of summer and the beginning of autumn. During this time, temperatures in Antarctica can vary widely depending on the specific location, generally they range from about -10°C to -20°C in coastal areas. Interior regions can be even colder, dropping to below -30°C or lower. It's important to note that Antarctica is a vast continent with diverse weather conditions, so temperatures can vary significantly from one area to another.

Santiago, Chile

Important Information

At the end of March, Santiago, Chile, typically experiences pleasant autumn weather as it transitions from summer to fall. The average daytime temperatures during this time of year range from around 15°C to 25°C. However, temperatures can vary, so it's advisable to check closer to your travel date for the most accurate forecast. Additionally, evenings and nights may be cooler, so it's a good idea to bring layers for comfort.

Weather

We always suggest referring to an online source for the most up-to-date weather information for your destination/s.

FLIGHTS

Seat Selection & Frequent Flyer Points

We do not arrange seat selection. It is essential to highlight that some airlines do not allow pre-selected seats. We strongly suggest you contact the airline directly with seating allocation requirements and/or arrive at the airport earlier to arrange your seating. While we do not add frequent flyer member details to bookings, you can do this directly with the airline once you have your flight information.

Passport Validity

Customers must provide valid passport details either at the time of purchase or no later than 90 days before the departure date. Failure to do so may result in the cancellation of the booking. Customers will be responsible for any costs and fees incurred in this instance.

CRUISE

Embarkation/Disembarkation

- Begins approximately 2 hours after docking.
- Due to security reasons, all guests must be on board 2 hours before sailing.
- Itineraries are subject to change at any time without notice.
- Check your specific sailing for exact departure and arrival times. All times are local to the port.

Please note: Strict Covid-19 terms may also apply regarding proof of insurance covering Covid-19 and/or vaccination. Please refer to the cruise lines' terms and conditions for further information before boarding.

Cruise Loyalty Discounts

Please note: Travellers must contact the cruise line directly upon receiving their travel documents in order to request any membership benefits they may be entitled to.

Meals

Please note: We will do our best to meet your requests/requirements; however, we cannot guarantee that we will always be able to.

Luggage

You will be responsible for all your personal belongings whilst on tour. You must carry your own luggage from the vehicle to the hotel room and back to the vehicle. The driver will assist with the uploading and unloading of bags from the vehicle.

OTHER

Mobility

If you require wheelchair access please contact our friendly sales and service team to inquire on your behalf.

Fitness Level Required

Adventure (and spontaneity) create some of the best travel memories. Bear in mind, your home schedules and timings might not be adhered to on tour - it's all part of the fun!

A moderate level of fitness will be required. Expect a moderate pace of touring with a focus on guided tours that may include full days with extended activities such as nature walks. You will require a general level of fitness for unassisted navigation of stairs and inclines, longer distances with possible periods of standing when visiting sites, walking on sloping, uneven ground or elevations. You will be responsible for your own luggage and have the ability to board all modes of transport without assistance.

Please note:

- Many areas may be inaccessible to wheelchairs or mobility scooters, where the unassisted use of personal walking sticks and other aids may be required. Although some assistance may be available, every traveller should be self-reliant during all aspects of their travel.
- It is expected that every traveller must be self-reliant and able to undertake all aspects of their own travel. Please speak to your booking agent about your personal circumstances and any assistance requirements to ensure this tour is right for you.
- If you have any concerns, please consult your healthcare provider prior to purchase/travel.

Yellow Fever

A valid international certificate of vaccination against Yellow Fever is required in many countries. You may need to present this on arrival at the airport or border crossing. Some countries will refuse entry if you are unable to present your certificate. It's also common for your home country to request a Yellow Fever certificate upon arrival. You must check with your doctor well before leaving home about the Yellow Fever requirements for the countries you'll be visiting.

Sightseeing

Please note: If entry to a site is affected by changes in operating hours or public holiday closures, your itinerary, where possible, may be adjusted, or a similar activity will be offered in its place (subject to availability).

Shopping

Shopping overseas can be a daunting and confusing experience, especially when there is a language barrier. Please be very cautious when foreign currencies and prices are involved. If paying by credit card, please pay close attention to the amount you are being charged and keep all your receipts. Do not make any purchases you are not comfortable with or feel pressured into. If you are uncertain or need assistance with the language barrier,



Important Information

please seek assistance from your Tour Guide/Leader. Please refer to our [Terms and Conditions](#) regarding shopping for further information.

Visas

United States of America

Australian passport holders must obtain an ESTA visa waiver in order to enter or transit in the United States.

Please note: You may be required to obtain a visa if you do not meet the eligibility requirements of the ESTA program. Please see <https://esta.cbp.dhs.gov> for full eligibility requirements and applications.

Canada

If transiting via Canada on the way to the USA, Australian and New Zealand passport holders must apply for an electronic travel authorisation (eTA) before travelling to Canada by air. An Electronic Travel Authorization (eTA) is an entry requirement for visa-exempt foreign nationals travelling to Canada by air. An eTA is electronically linked to a traveller's passport. It is valid for up to five years or until the passport expires, whichever comes first. If you get a new passport, you need to get a new eTA. If you arrive in Canada by train, bus, or boat, you don't need a visa or eTA, but you do need to bring the right travel documents.

Argentina

Australian passport holders are visa exempt for a stay of up to 3 months.

Please note: Effective immediately, all international travellers to Argentina must hold valid travel insurance with medical coverage. This insurance may be requested and verified upon arrival in the country. Argentina's public healthcare system will no longer provide free medical services to foreign nationals. It is therefore essential that you obtain appropriate insurance before your departure.

Chile

To enter Chile, Australian citizens must obtain a visa before arrival. The application

process can be lengthy, so allow yourself enough time before your planned travel. When travelling to Chile, you'll get a tourist card (paper) on arrival. You must keep the card and present it to immigration officials when departing Chile. You can request a new copy online if your tourist card is lost or stolen. Entry and exit conditions can change at short notice. Contact the Embassy or Consulate of Chile for details about visas, currency, customs and quarantine rules.

Important:

- *Please start arranging your visa three weeks before departure to account for any delays due to consulate operating hours.*
- *Visa rules are subject to change. Please check with the nearest embassy, consulate or immigration department of the destination/s you are visiting once you receive your travel documentation to ensure you have the most up to date information.*
- *It is your responsibility to be travel-ready and ensure that you are aware and comply with any destination or travel requirements, including the validity of all required travel documents.*
- *Passengers who are not Australian citizens must also check with the respective consulate or visa agency to determine what their visa requirements are and what personal identification is required.*
- *It is also important to note that some areas of employment, such as journalism, government authorities and charity organisations, may have additional restrictions in applying for visas. This may, in turn, affect the type of application required.*

Travel Insurance

Embarking on your next trip is exciting, and while you hope the unexpected does not happen, it is best to be prepared. We strongly recommend you take out travel insurance when making your booking. Whether it's a potential medical emergency, a flight cancellation, a delayed suitcase, or an unforeseen event, it's important to ensure you're adequately

protected. For more information or advice visit <https://www.tripadeal.com.au/travel-insurance>

Schedule Of Fees

Voluntary Changes

This includes booking changes requested by you, including but not limited to those changes requiring an airline ticket or a Purchase Confirmation reissue.

- Changes - \$100 per booking and any additional charges applied by the airline/ cruise company/accommodation/other travel providers.

Name Changes Due To Passenger Error

If the incorrect name has been provided, charges of \$100 per booking and any additional charges applied by the airline/ cruise company/accommodation/other travel providers.

Supplier Fees

In the event the tour package you have purchased is unable to proceed, and/or a Travel Supplier is unable to fulfil the tour due to external circumstances (Limitation of Liability e.g. a Force Majeure event), there may be a fee or amount of money that is withheld by our Suppliers and is unrecoverable. This may be due to non-refundable airline tickets, cancellation penalties with cruise cabins or unrecoverable payments with our land/accommodation partners. If refunds are not available from Suppliers, we will endeavour to obtain a travel credit on the best terms available and communicate these outcomes to you. In the event we are unable to obtain a refund or travel service credit, or part thereof, this cost is passed on to the customer as a Supplier Fee.