



# Sri Lanka & All Inclusive Maldives 2026

SIGIRIYA ● KANDY ● NUWARA ELIYA ● GALLE

## The Offer

Ready to experience the perfect holiday, blending a tour through a stunning destination and relaxing in a tropical resort? See the best of Sri Lanka and then enjoy an all-inclusive Maldives experience on this 14-day package.

With colourful cities and timeless ruins, gorgeous beaches and tea plantations as far as the eyes can see, Sri Lanka offers an irresistible mix of history, culture, and natural beauty. Combined with the barefoot luxury and indulgence of the Maldives, where minutes seem like hours and hours feel like days, you have all the makings of an unforgettable holiday.

Striking the perfect balance of exploration and relaxation, this trip will take you to the spiritual mecca of Kandy and the verdant tea plantations of Nuwara Eliya - plus a whole lot more. Enjoy free time on the beach or bite into the delicious cuisine of Negombo; visit Dambulla, the largest and best-preserved cave temple complex in Sri Lanka; and travel to the charming Galle, home to the famous Galle Dutch Fort. Then, relax for four nights at the 4-star Adaaran Club Rannalhi in the Maldives, enjoying three meals daily and an unlimited drinks package. Bliss!

This incredible discovery package includes return international full-service flights on Sri Lankan Airlines, 8 nights of quality hotel accommodation while on tour in Sri Lanka, an English-speaking tour guide, and so much more.

**Want more? Choose from Standard or Premium accommodation in Sri Lanka. Also, Classic Ocean, Classic Beach, Water Villa and Sunset Water Villa upgrade options are available in The Maldives.**

Offer available for a limited time or until sold out. TRIP A DEAL PTY LTD: 50149240433

Updated: 10 Apr 2026 17:27:39

Have a question about this deal? We're here to help.  
Call our friendly team on 1300 158 912

1

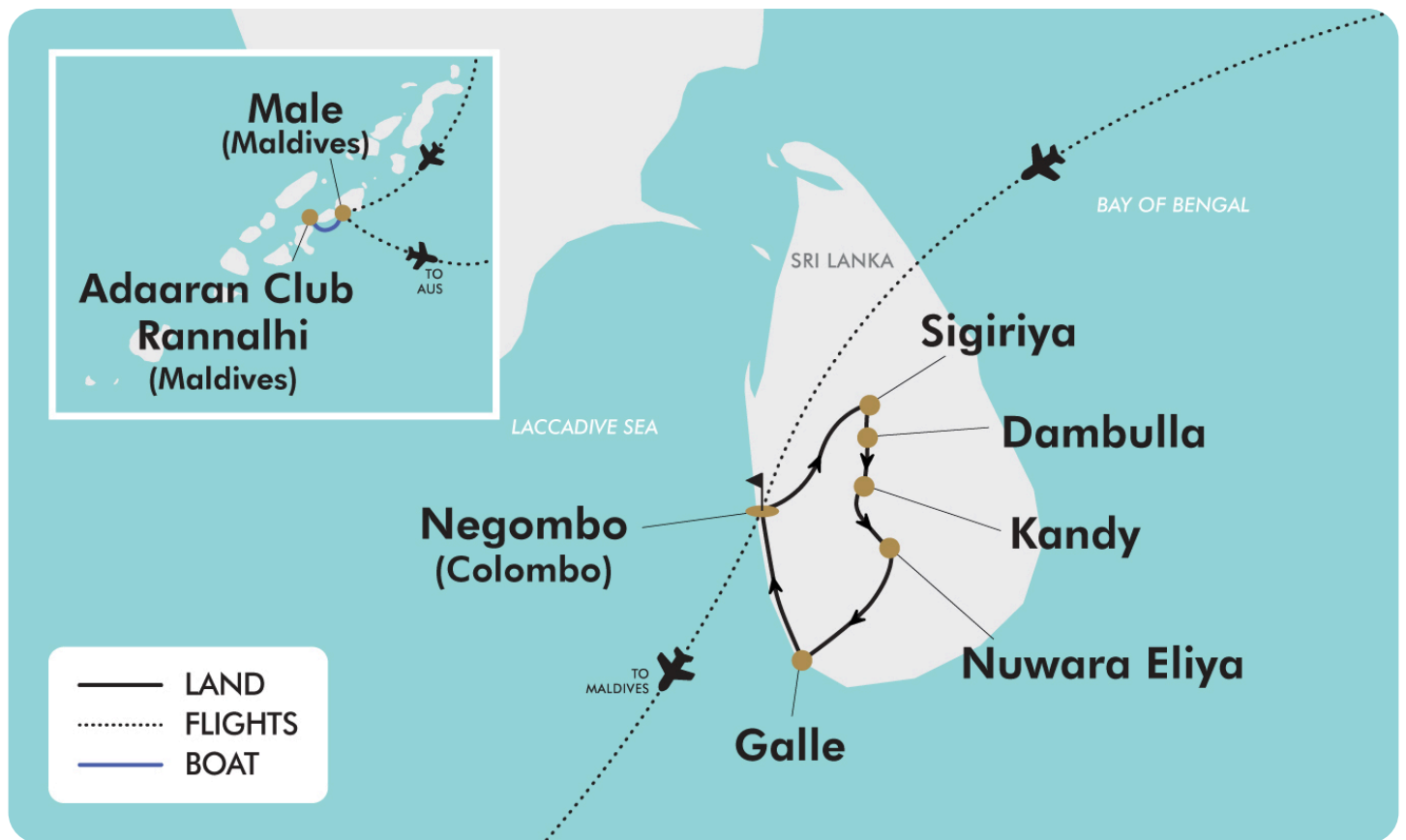
FREQUENT  
FLYER 

 Trip  
aDeal



**14-DAY TOUR PACKAGE | SRI LANKA & ALL INCLUSIVE MALDIVES 2026**

**The Map**



Offer available for a limited time or until sold out. TRIP A DEAL PTY LTD: 50149240433

Updated: 10 Apr 2026 17:27:39

Have a question about this deal? We're here to help.  
Call our friendly team on 1300 158 912



## 14-DAY TOUR PACKAGE | SRI LANKA & ALL INCLUSIVE MALDIVES 2026

### The Itinerary

#### Day 1 Australia or New Zealand - Negombo (Colombo), Sri Lanka

Today depart from Australia or New Zealand for Negombo (Colombo), Sri Lanka! Fly with Sri Lankan Airlines plus any airline partners. Upon arrival, be met by a tour representative and transferred to the hotel.

*Please note: Due to flight scheduling and availability, some departures may occur on Day 0. Affected customers must be at the airport the night before. Flight times will be indicated on your final documents, issued 4-6 weeks prior to departure.*

**Overnight: Negombo Hotel (Standard or Premium option)**

**Meals included: In-Flight**

#### Day 2 Negombo Free Day

Enjoy today at leisure as you adjust to the new time zone and surroundings. If you have spare time, your guide will introduce you to some of Negombo's curious sites such the Dutch churches, perhaps take a boat ride along the Dutch canals or laze on the golden sands. Negombo was an important port during the colonial periods. In the late 17th century, the Dutch built a network of canals, over 100 kilometres in length, that was used to transport cinnamon and other spices from inland plantations to the coast.

**Overnight: Negombo Hotel (Standard or Premium option)**

**Meals included: Breakfast**

#### Day 3 Negombo - Kandalama/Sigiriya

Following breakfast, enjoy time at leisure.

In the afternoon, you'll depart on an approximately 140-kilometre journey to Kandalama. Upon arrival, check into the hotel and enjoy the rest of the day at leisure, or join an optional tour to visit the iconic Sigiriya Rock Fortress (not included).

#### Optional Activity: Sigiriya Rock Fortress

In the afternoon, visit Sigiriya Rock Fortress. A UNESCO World Heritage Site, Sigiriya is the fifth-century rock citadel of King Kasyapa. Step through the gigantic 'Lion Paws' set overlooking the symmetrical royal gardens to comprehend the splendour that once dominated this rock fortress. Surrounded by ramparts and moats, the Lion Rock is coated by frescoes related to Gupta-style paintings in the Ajanta caves of India. Wander into the museum downstairs for an insight into how the citadel floated above citizens and learn about the advanced ponds and irrigation that pumped water onto its summit through an ingenious hydraulic system. Please see the current pricing in Important Information.

**Overnight: Sigiriya/Kandalama Hotel (Standard or Premium Option)**

**Meals included: Breakfast**

#### Day 4 Kandalama/Sigiriya Free Day

Today enjoy the day at leisure, or join one or both of the following optional tours.

#### Optional Activity: Morning Polonnaruwa City Tour

Rising with the decline of Anuradhapura, the city of Polonnaruwa - the medieval capital and crown jewel of King Parakramabahu I - remains superior proof of ancient culture and heritage blended with religious beliefs. Walk among the scattered walls of this World Heritage Site, dotted with stupas, resting Buddha statues,



## 14-DAY TOUR PACKAGE | SRI LANKA & ALL INCLUSIVE MALDIVES 2026

### The Itinerary

irrigation canals and fantastically carved Hindu sculptures – while observing the relic house - Watadage - which boasts impressive stone carvings. Look closely, and you will notice a subtle Hindu influence on the architecture and statues found in Polonnaruwa. Please see the current pricing in Important Information.

Optional Activity: Half-Day Jeep Safari in Minneriya National Park

Experience an afternoon safari at Minneriya National Park. If you're up for a serious rumble in the jungle, then Minneriya is the place to go! Spread over 8800 hectares, it's a sanctuary for elephants and home to herds of deer and ample birdlife, but its spotlight remains between swaying trunks and flapping ears. Take the opportunity to see herds of elephants - one by one - roll onto the grass-covered banks to feed on tender shoots. This is the largest elephant gathering in the world (over 300 at a time) – it's an absolute must-do for wildlife enthusiasts. Please see the current pricing in Important Information.

**Overnight: Sigiriya/Kandalama Hotel (Standard or Premium Option)**

**Meals included: Breakfast**

#### Day 5 Sigiriya/Kandalama - Dambulla - Kandy City Tour

After breakfast, you'll travel approximately 90 kilometres to Dambulla. On the way, you'll stop at the Dambulla Rock Cave Temple, treasured by many kings since the first century BC. An icon of Sri Lanka, Dambulla Rock Cave Temple features five magnificently constructed cave temples flanking the golden temple of Dambulla. Observe the exquisite cave paintings along walls that shelter 150 statues of Lord Buddha. As you enter the retreat, be sure to cast your eyes on the gigantic Buddha statue glittering in gold, which today houses a critical junction in the country's economic and cultural uplifting.

On completion of the tour leave for Kandy. Upon arrival, check into the hotel.

Afterwards, embark on a guided city tour. Kandy was the royal capital of Sri Lankan kings – a centre of culture, history, and heritage. Experience the Temple of the Sacred Tooth Relic of Lord Buddha. A stroll across this small lakeside town cradled among the misty hills will take in the Kandy city centre as well as a bazaar, an arts and crafts centre and a gem and lapidary museum. Next, fine-tune your evening by stepping to the beat of traditional music and drumming with a vibrant Sri Lankan cultural show.

**Overnight: Kandy Hotel (Standard or Premium Option)**

**Meals included: Breakfast**

#### Day 6 Kandy - Nuwara Eliya Tour

After breakfast, you'll depart on an approximately 91-kilometre journey to Nuwara Eliya.



## 14-DAY TOUR PACKAGE | SRI LANKA & ALL INCLUSIVE MALDIVES 2026

### The Itinerary

In the afternoon, commence a sightseeing tour of Nuwara Eliya. Sri Lanka, tea and tourism are words that cannot be separated. Head to the cold and misty hills for the ultimate tea plantation tour through lush green fields. Or just step into a tea factory processing the prestigious brand of Ceylon Tea, to observe a rich tradition kept alive up to date. As you observe the hissing and swishing of machines, inhaling the heavenly scent arising from these facilities, make sure to end the day in style over a perfectly blended cup of pure Ceylon Tea.

**Overnight: Nuwara Eliya Hotel (Standard or Premium Option)**  
**Meals included: Breakfast**

#### Day 7 Nuwara Eliya – Galle

Following breakfast, leave for the epic southern capital of Galle, where classic Dutch architecture meets a laid-back tropical setting.

Enjoy a tour of the famed Galle Dutch Fort as you stroll through the Dutch-influenced streets, listening to the creak of wooden saloon doors and observing how European architecture mingles with South Asian traditions. Preserved for more than three centuries, the Galle Dutch Fortress still has its original ramparts and bastions. Beyond the old gate bearing the British coat of arms, you will see the Zwart Bastion, the lighthouse, and the Point Utrecht Bastion. Venture into the Dutch Hospital Shopping Complex for a wide range of souvenirs.

On completion of the tour, you'll be transferred to the hotel after an approximately 250-kilometre day.

**Overnight: Galle Hotel (Standard or Premium Option)**  
**Meals included: Breakfast**

#### Day 8 Galle Free Day

After breakfast, enjoy the day at leisure to explore and enjoy the beach.

**Overnight: Galle Hotel (Standard or Premium Option)**  
**Meals included: Breakfast**

#### Day 9 Galle - Colombo, Sri Lanka – South Malé Atoll, Maldives

Today, after breakfast, check out of the hotel and transfer on an approximately 150-kilometre journey to the airport for the short flight to Malé, Maldives.

Upon arrival in Malé, be met at the airport by a representative and transferred to the resort by speedboat where you can relax and unwind for the next four nights on island time.

**Overnight: Adaaran Club Rannalhi, Maldives**  
**Meals included: Breakfast; Dinner**

#### Day 10 Adaaran Club Rannalhi, Maldives

Enjoy the next three days at leisure in this incredible resort. Relax in this tropical oasis, or perhaps try out one of the many activities available on the island (subject to inclusions).

**Overnight: Adaaran Club Rannalhi, Maldives**  
**Meals included: Breakfast; Lunch; Dinner**

#### Day 11 Adaaran Club Rannalhi Free Day

Enjoy a further day at leisure to relax and enjoy the resort facilities.

**Overnight: Adaaran Club Rannalhi, Maldives**  
**Meals included: Breakfast; Lunch; Dinner**



## 14-DAY TOUR PACKAGE | SRI LANKA & ALL INCLUSIVE MALDIVES 2026

### The Itinerary

#### Day 12 Adaraan Club Rannalhi Free Day

Enjoy a further day at leisure to relax and enjoy the resort facilities.

**Overnight:** Adaraan Club Rannalhi, Maldives

**Meals included:** Breakfast; Lunch; Dinner

#### Day 13 Malé, Maldives - Australia or New Zealand (via Colombo)

Today, at the appropriate time you will be transferred to the airport for the return flight home after making one travel dream come true!

**Meals included:** Breakfast; In-Flight

#### Day 14 Arrive Australia

*Please note: Some flights may arrive +1 day later due to flight scheduling.*

**Meals included:** None



## 14-DAY TOUR PACKAGE | SRI LANKA & ALL INCLUSIVE MALDIVES 2026

### Tour Inclusions

#### HIGHLIGHTS

Uncover the highlights of Sri Lanka on tour

Journey among the lush tea plantations of Nuwara Eliya

Delve into Sri Lanka's rich heritage at a Ceylon tea factory

Unwind with a day at leisure in the beachside town of Negombo

Enjoy a day at leisure in the Kandalama/Sigiriya area, home of the ancient rock fortress

Marvel at the cave art of Dambulla Rock Cave Temple on a guided tour

Spend the night in spiritual Kandy, home of the Temple of the Sacred Tooth Relic

Enjoy free time and a guided tour in the Dutch colonial city of Galle

Visit Galle Fort, also known as the 'Dutch Fort'

Experience the stunning beauty of the Maldives

Relax with 4 nights at leisure at the luxury Adaaran Club Rannalhi

Indulge with a premium unlimited meals and alcoholic drinks plan

Take advantage of a complimentary \$50 USD per person credit for Spa treatments in the Maldives

Enjoy a 10% discount on Excursions in the Maldives

Enjoy a complimentary one-hour sunset photo cruise in the Maldives

Enjoy complimentary use of snorkelling equipment in the Maldives

#### FLIGHTS

Return international full-service flights (economy class), surcharges may apply

One-way international flight (economy class) from Colombo, Sri Lanka to Male, Maldives

Fly with award-winning Sri Lankan Airlines plus any codeshare partners

#### ACCOMMODATION

8 nights of hotel accommodation in Sri Lanka

4 nights at the 4-star Adaaran Club Rannalhi, Maldives

#### DINING

Enjoy 19 meals, including three meals daily in the Maldives

Enjoy a premium all-inclusive alcoholic and non-alcoholic drinks package in the Maldives (09:30 to midnight)

Daily snacks and refreshments during your stay in the Maldives

#### ESSENTIALS

English-speaking tour guide (Day 2-9)

Airline taxes and surcharges

#### TRANSPORT

Transportation by private air-conditioned vehicles

#### TRANSFERS

Return airport transfers with meet and assist in Sri Lanka

Return airport speedboat transfers in the Maldives

Offer available for a limited time or until sold out. TRIP A DEAL PTY LTD: 50149240433

Updated: 10 Apr 2026 17:27:39

Have a question about this deal? We're here to help.  
Call our friendly team on 1300 158 912

7

FREQUENT FLYER 

Trip aDeal 

# Important Information

*\*Please note: All information provided in this brochure is subject to both change and availability. Prior to purchase please check the current deal for up-to-date information. If you have already purchased this deal, the terms and conditions on your Purchase Confirmation apply and take precedence over the information in this brochure.*

## Booking Information

After purchase, you will receive a receipt and a Purchase Confirmation, directing you to an online Passenger Information Form. You must complete the Passenger Information Form within 72 hours of purchase.

Any special requests, preferences and optional extras MUST be clearly stated in your Passenger Information Form. Any change requested after submitting your Passenger Information Form cannot be guaranteed, is strictly subject to availability and will incur surcharges as outlined in the Schedule of Fees below.

*Please note: All countries and territories have different entry requirements in relation to vaccinations, quarantine/isolation periods and travel restrictions. Due to the evolving nature, we would ask all of our customers to monitor, meet and adhere to the specific requirements of their intended destination(s) in the lead-up to and immediately before travel, as well as any requirements post-travel upon their return.*

## Our Policies

### Cancellation & Refund Policy

By placing a booking with us, you acknowledge the following important information:

#### • we act as your booking agent ;

TripADeal is a booking services provider, and curates the Travel Offers available on our website. We act as your booking agent, and we receive payment for the Booking Services as part of the booking price, however, we do not provide any of the Travel Services (flights, accommodation, tours or other products or services) included in your booking – the Travel Services are provided by a number of third party Travel Suppliers.

• **each booking is unique** ; our Travel Offers are made up of a variety of different components and are, during the booking process, uniquely tailored to suit your requirements, for example, departure dates and ports, flight and room upgrades, tour inclusions, etc.

• **changes/modifications to your booking may not be possible** ; once your booking has been made, changes or modifications may not be possible, and where possible, may incur a fee. It is important to ensure that the information you provide during the booking process is accurate and up to date, and that you read the Travel Offer carefully before placing your order.

• **Travel Offers are a package** ; our Travel Offers have been curated into package offerings and must be used as a package – individual components cannot be used independently of the full package offering.

• **our Travel Offers are generally non-refundable** ; in order to provide great value Travel Offers, we work with a variety of Travel Suppliers to find the best deals – this often means the Travel Suppliers' offerings are non-refundable to ensure the best price. We recommend that you obtain travel insurance as soon as you make a booking with us.

To read more about our Cancellation and Refund Policy, [please click here](#).

### General Terms & Conditions

By placing your booking with us, you acknowledge and agree to our [Terms & Conditions](#), [Privacy Policy](#) and [Cancellation Policy](#).

## Offer Essentials

This Travel Offer is valid for travel on selected dates until the 9th of May 2026. Minimum group size 8, maximum group size 20 per vehicle.

This Travel Offer is priced per person based on a twin share.

### Departure Dates & Surcharges

See checkout for live dates and availability.

## Single Traveller Supplement

For solo travellers, a mandatory single supplement of applies:

- Standard/Classic Ocean Room: \$2,000
- Standard/Classic Beach Room: \$2,075
- Standard/Overwater Villa: \$2,700
- Standard/Sunset Overwater Villa: \$2,800
- Premium/Classic Ocean Room: \$2,050
- Premium/Classic Beach Room: \$2,100
- Premium/Overwater Villa: \$2,750
- Premium/Sunset Overwater Villa: \$2,850

*Please note: Accommodation for single customers who are travelling on a tour or cruise package may be in a single room, depending on availability.*

## Child Policy

- No child discounts are offered. The full price applies to all children travelling with their parents.
- Valid for children 8 years old and over.

*Please note: Children must be accompanied by a responsible adult 18 years old and over to travel. No unaccompanied minors are allowed.*

## Flights

### Departure Cities

Sydney, Melbourne, \*Brisbane, \*Adelaide, \*Perth & \*Auckland

### Departure City Surcharges

Sydney: \$50 per person  
Brisbane & Adelaide: \$400 per person  
Perth: \$350 per person  
Auckland: \$800 per person

### International Full-Service Airline(s) Used

Cabin Class: Economy Class

*Please note: We cannot accommodate one-way flights. Travellers must take all included flights within the package, and any flights intentionally forfeited will result in later flights being subject to cancellation.*

*Please note:*

- *From Sydney or Melbourne, the flying journey to your destination may take up to 19 hours, with up to 1 stop.*

# Important Information

- From Brisbane or Adelaide, the flying journey to your destination may take up to 20 hours, with up to 2 stops.
- From Perth, the flying journey to your destination may take up to 18 hours, with up to 1 stop.
- From Auckland, the flying journey to your destination may take up to 24 hours, with up to 2 stops.

This is provided as a guide only - actual flight duration can vary depending on availability and airline schedules. Your booking's final details will be confirmed to you via email once available.

## Missed Flights

If you fail to arrive for your outbound flight, you risk all flight and land arrangements in your destination being automatically cancelled by the airlines and land operator, respectively. Additional fees may apply to reinstate these services. If you miss your flight for whatever reason, please contact us as soon as possible to make arrangements.

## Preferred Airline Surcharge

Not available

## Arrive Early & Stay Behind Options

Fly out and return home up to 60 days pre and post your tour dates.

### Arrive Early

Colombo, Sri Lanka - From \$300 per person, subject to availability.

### Stay Behind

Malé, Maldives - From \$300 per person, subject to availability.

#### Please note:

- Exclusions: This fee does not include extra nights' accommodation, meals or airport transfers.

- Cancellations & Changes: Flight booking changes or cancellations after air tickets have been issued are not guaranteed and may incur additional fees and fare difference, subject to the airline cancellation and change policies. Flight changes are subject to availability at the time of booking.
- High-Season: A high-season Arrive Early or Stay Behind can be purchased for an additional charge, subject to availability. For pricing, please refer to the cart.
- + 60 days : You can fly out up to 60 days before your package's start date, and/or return home 60 days after your package's end date. Should you wish to fly out or return home for more than 60 days from the tour, please contact us to request availability. Additional costs may apply.
- Estimated Dates: Your estimated departure, return, and arrival dates are all subject to availability and may vary. The confirmed schedule for all flights will be provided when you receive your flight tickets.
- High season surcharges apply to flights departing between the below date ranges:

15 September 2025 - 12 October 2025  
1 December 2025 - 31 January 2026  
3 April 2026 - 20 April 2026  
26 June 2026 - 17 July 2026  
18 September 2026 - 9 October 2026  
12 December 2026 - 26 January 2027

## Stopover Packages

- Kuala Lumpur  
Includes:
  - 2, 3 or 5 nights in 4-star accommodation.
  - Daily breakfast.
  - Return airport transfers.

For pricing, please refer to the payment cart at checkout.

#### Please note:

- When a pre and post-tour stopover is chosen, the same stopover location must be chosen each way, due to the airline used.
- When selecting to Arrive Early for your tour in conjunction with a Stopover Package, your fly out date from home will take place before the stopover.

- When selecting to Stay Behind after your tour in conjunction with a Stopover Package, your stopover will take place before your final flight home.
- Stopover packages are subject to availability.
- In the event that a purchased stopover package and a purchased preferred airline upgrade are not compatible, you will have the option to receive a refund for the preferred airline upgrade or be offered an alternative stopover city option, e.g if you choose to fly with Singapore Airlines you cannot stopover in Dubai.
- Blackout dates apply to flights departing between the below date ranges:

Singapore Grand Prix: Early October 2026  
18th December 2026 - 3rd January 2027

## Flight Class Upgrades

Business Class: For pricing, please refer to the payment cart at checkout.

#### Please note:

- Flight upgrades are subject to availability and pricing changes (if we cannot fulfil your request, the upgrade cost will be refunded).
- On any upgrade purchase, short-haul flights and domestic flight sectors are not guaranteed.

## Accommodation

Standard Package: 3 & 4-Star (Self-Rated)

- Negombo: Earl's Regent
- Sigiriya/Kandalama: Hotel Sigiriya
- Kandy: Hotel Suisse
- Nuwara Eliya: Galway Heights
- Galle, Sri Lanka: South Lake
- South Malé Atoll, Maldives (4-Star): Adaaran Club Rannalhi

Premium Package: 4 & 5-Star (Self-Rated)

- Negombo, Sri Lanka: Heritage Negombo.
- Sigiriya/Kandalama, Sri Lanka: Heritage Kandalama.
- Kandy, Sri Lanka: Grand Kandyan.
- Nuwara Eliya, Sri Lanka: Heritage Tea Factory.
- Galle, Sri Lanka: Oceanfront Galle by ICC.

# Important Information

- Maldives, South Malé Atoll: Adaaran Club Rannalhi.

## Maldives Resort Information

### Resort: Adaaran Club Rannalhi

A little piece of paradise in the Indian Ocean, Adaaran Club Rannalhi is the island escape you've been dreaming of. The resort's location at the tip of Rannalhi Island offers pristine beaches, excellent diving and snorkelling, and easy access to the capital city of Male.

### Classic Ocean View Room

Elevate your Maldivian escape in our Ocean View chambers which blends simplicity with elegance, offering stunning views of the ocean from your private terrace or balcony. Immerse yourself in the tranquil ambiance, highlighted by tropical furnishings and modern amenities. With complimentary snorkeling gear and a selection of free excursions, your stay promises both relaxation and adventure.

Room Size: 34m<sup>2</sup>

Max occupancy: 2 people

Bedding configuration: Double bed or Twin beds (Subject to availability)

*Please note: This room is upstairs and access involves stairs*

### Classic Beach View Room

Discover a tropical haven, a room which is a mix of comfort and style, featuring simplistic elegance and tropical décor. Wake up to enchanting views of the pristine beach from your balcony or terrace. Complete with modern facilities, free snorkeling gear and a variety of complimentary excursions, your stay is set to be as relaxing as it is exciting.

Room Size: 34m<sup>2</sup>

Max occupancy: 2 people

Bedding configuration: Double bed or Twin beds (Subject to availability)

*Please note: This room is on the ground floor.*

### Water Villa

Water bungalows are equipped with modern amenities and feature elegant

cream and pastel decor complemented by elegant wooden furniture exuding a contemporary tropical feel. Each villa features a private sun deck and ladder offering unfettered access to the ocean.

Room Size: 69m<sup>2</sup>

Max occupancy: 2 people

Bedding configuration: Double bed and Single bed (Subject to availability)

### Sunset Water Villa

Immerse yourself in the serene beauty of the Sunset Water Villa, designed for an idyllic retreat; these villas not only allow you to wake up to the calming sound of waves but also offer a front-row seat to the most breathtaking sunsets. With private sun decks providing direct access to the water, you can soak in the tranquil oceanic ambience or engage in complimentary excursions for an exhilarating stay.

Room Size: 69m<sup>2</sup>

Max occupancy: 2 people

Bedding configuration: Double bed and Single bed (Subject to availability)

### In-Room Facilities

- Air conditioning
- Ensuite bathroom
- Ocean View
- Telephone with IDD Facility
- Tea and coffee-making facilities
- Satellite Television (CRT)
- In-room safe
- Mini-bar

*Please note: Extra charges may apply.*

### Resort Facilities

- Table Tennis
- Beach Volleyball
- Beach Football
- Excursions
- Shopping Arcade
- Morning Fishing
- Sunset Fishing
- Windsurfing
- Snorkelling
- Scuba Diving
- Water Skiing
- Diving
- Sun Chairs

- Spa
- Reflexology Centre
- Wi-Fi in public area

*Please note: Extra charges may apply.*

### All-Inclusive Drinks Package Inclusions

- Whisky, brandy, gin, vodka, rum or draft beer
- House wine (red or white)
- Soft drinks (Coca-Cola, Diet Coke or Fanta)
- Sprite, Bitter Lemon, Soda Water or Tonic Water
- Tea and coffee
- Mineral water
- Cordials
- Selected cocktails

*Please note:*

- *Beverages will be served one glass at a time and provided for your own consumption only from 09:30 to midnight. Alcoholic beverages will not be served to anyone under the age of 18. The All Inclusive entitlements will end on the date of departure at 12:00 noon.*
- *Extra charges are applicable for the following:*
- *Drinks consumed after midnight*
- *Drinks consumed during excursions*
- *Facilities or activities not expressly mentioned*

### Location: Rannalhi Island, South Malé Atoll

Adaaran Club Rannalhi is an enchanting tropical paradise located only 34 km from the Male International Airport. Accessed via a brisk 45-minute speedboat ride, it's a destination where powder-soft sands give way to shimmering sapphire waters. Set across five acres of gorgeous greenery, the resort features a buffet restaurant and cocktail bar, an indulgent day spa, and plenty of opportunities for rest and relaxation.

*Please note: Accommodation/rooms offered are based on a lead-in room type and are subject to availability based on seasonality. In the instance a property is not available, a similar standard of accommodation will be provided. Properties will be confirmed and*

# Important Information

*included in your travel pack, which you will receive 4-6 weeks before travel.*

## Extra Nights

Not available.

*Please note: If you are interested in booking additional nights of accommodation pre or post-tour, please wait until you receive your travel documentation approximately 4-6 weeks before departure for the confirmed list of hotels. If booking your own additional accommodation directly with the hotel, please be aware that you may be required to change rooms at the start/end of your tour.*

## Maximum Room Capacity

2 people

## Triple Share

Not available.

## Bedding Configuration

Twin or double (subject to availability).

## Optional Tours/activities

- Day 3: Sigiriya Rock Fortress - \$85 AUD per person.
- Day 4: Polonnaruwa City Tour - \$115 AUD per person.
- Day 4: Half-Day Jeep safari in Minneriya National Park - \$125 AUD per person.

*Please note:*

- *The optional tours listed above must be purchased on checkout or over the phone*

*before submitting your passenger information form*

*(subject to availability).*

## Exclusions

- Visa fees and requirements
- Domestic transfers and flights not stated in the deal offer
- Meals/beverages not stated in the deal offer
- Optional gratuities/tipping
- Optional activities/tours
- Personal expenses
- Travel insurance

- Any costs associated with an interruption to your tour as a result of an airline schedule change or cancellation
- Maldives Green Tax (\$12 USD per person per night).

## Gratuities/tipping

### Land

Gratuities (tips) are not included for the services of the tour leader (when available) and driver throughout the tour. The recommended tip is 2000 rupees (approximately \$10 AUD) per person per day in Sri Lanka. This covers the guide/leader and the driver and will be collected on tour.

In addition to the recommended gratuities for your dedicated tour leader and driver, a voluntary 'group kitty' may be introduced at the commencement of your tour. This optional contribution, not exceeding \$10 AUD per person for the entire trip, helps cover smaller, shared tips along the journey for local services such as bellboys, shoe minders, and safari drivers. This streamlines tipping and ensures fair recognition for those who enhance your experience.

*Please note: Tipping for services provided is always a matter of personal discretion; however, please be aware that many locals consider tipping part of their normal remuneration, and they may approach you for payment; there's no need to be intimidated by the request.*

## Other Important Information

### Maldives Green Tax

Green Tax is levied on tourists who stay in tourist resorts, tourist hotels, and tourist vessels. It is levied at a flat rate of \$12 United States dollars (USD) per person per day of stay and payable upon check-in. The green tax is applied as per the current government guidelines.

### TOUR GUIDE VS. TOUR LEADER

#### Tour Guide

Often locals with intimate knowledge of an area, its culture, and history. Their role

entails providing commentary, routing the tour, and seeing that people have a good time. They are a licensed, qualified expert who supplies specific information on the history, art, architecture and culture of the city/village/attraction where they are guiding the tour. The guide meets the group at the required place and leaves it at the end of the tour; they do not travel with the group.

#### Tour Leader

An experienced person tasked with ensuring the smooth operation of tours, as well as providing practical support to passengers throughout the whole trip. Their role primarily includes assisting with accommodation, transportation between locations, and communication with tour guides at each stop. A tour leader may provide general guidance around a city or village and offer information on the place visited on the bus. However, they are not required to have specific art, architecture, or historical knowledge. They are not allowed to provide a guided tour or commentary of a city/village/attraction once there and, if caught doing so, can be fined.

*Please note: Tour leaders/guides are not a standard inclusion in all travel offers. Tour leaders/guides will only be made available when required to enhance the experience of the destination featured.*

### CLIMATE & AVERAGE TEMPERATURES

#### Sri Lanka

Sri Lanka is a year-round destination with two monsoon seasons so there is a lot of confusion around when is the best time to visit. The weather doesn't run like clockwork here! However, there will rarely be weather so dramatic that it will stand in the way of a brilliant holiday with plenty of warm weather and sunshine. The temperature is constant at around 27°C on the coast, both the air and the water!

#### Maldives

March is the hottest month in Maldives with an average temperature of 29°C and the coldest is January at 27°C with the

# Important Information

most daily sunshine hours in February. The best month to swim in the sea is in April when the average sea temperature is 30°C however, water temperatures are still around an average 29°C during June and July.

## Weather

We always suggest referring to an online source for the most up-to-date weather information for your destination/s.

## FLIGHTS

### Seat Selection & Frequent Flyer Points

We do not arrange seat selection. It is essential to highlight that some airlines do not allow pre-selected seats. We strongly suggest you contact the airline directly with seating allocation requirements and/or arrive at the airport earlier to arrange your seating. While we do not add frequent flyer member details to bookings, you can do this directly with the airline once you have your flight information.

### Passport Validity

Customers must provide valid passport details either at the time of purchase or no later than 45 days before the departure date. Failure to do so may result in the cancellation of the booking. Customers will be responsible for any costs and fees incurred in this instance.

## COACH TOUR

### Meals

For meals not included, the tour leader (when available) will offer assistance with reservations, suggestions and directions to local restaurants. It is your responsibility to notify us of any dietary requests/requirements.

*Please note: We will do our best to meet your requests/requirements; however, we cannot guarantee that we will always be able to.*

### Luggage

You will be responsible for all your personal belongings whilst on tour. You must carry your own luggage from the vehicle to the hotel room and back to the

vehicle. The driver will assist with the uploading and unloading of bags from the vehicle.

## OTHER

### Mobility

The speedboats used in the Maldives are not equipped with wheelchair access, so, unfortunately, this tour is currently not suitable for wheelchair users and those less mobile.

### Fitness Level Required

Adventure (and spontaneity) create some of the best travel memories. Bear in mind, your home schedules and timings might not be adhered to on tour - it's all part of the fun!

A Moderate level of fitness will be required. Expect a moderate pace of touring with a focus on guided tours that may include full days with extended activity, guided city tours or nature walks. You will require a general level of fitness for unassisted navigation of stairs and inclines, longer distances with possible periods of standing when visiting sites, walking on sloping, uneven ground or elevations. You will be responsible for your own luggage and have the ability to board all modes of transport without assistance.

#### *Please note:*

- *Many areas may be inaccessible to wheelchairs or mobility scooters, where the unassisted use of personal walking sticks and other aids may be required. Although some assistance may be available, every traveller should be self-reliant during all aspects of their travel.*
- *It is expected that every traveller must be self-reliant and able to undertake all aspects of their own travel. Please speak to your booking agent about your personal circumstances and any assistance requirements to ensure this tour is right for you.*
- *If you have any concerns, please consult your healthcare provider prior to purchase/travel.*

### Sightseeing

*Please note: If entry to a site is affected by changes in operating hours or public holiday closures, your itinerary, where possible, may be adjusted, or a similar activity will be offered in its place (subject to availability).*

## Wildlife

TripADeal cannot guarantee animal sightings. Wildlife are unpredictable and factors such as weather conditions, predatory fear and animal movements can impact sightings.

## Shopping

Shopping overseas can be a daunting and confusing experience, especially when there is a language barrier. Please be very cautious when foreign currencies and prices are involved. If paying by credit card, please pay close attention to the amount you are being charged and keep all your receipts. Do not make any purchases you are not comfortable with or feel pressured into. If you are uncertain or need assistance with the language barrier, please seek assistance from your Tour Guide/Leader. Please refer to [our Terms and Conditions](#) regarding shopping for further information.

## Visas

### Sri Lanka

A tourist visa for Sri Lanka is a strict requirement if travelling on an Australian Passport. You will need a visa in the form of an Electronic Travel Authorisation (ETA) to enter Sri Lanka from 27 September 2024. Limited facilities to obtain an ETA are available at Colombo's Bandaranaike International Airport, however ETA's can be obtained prior to departure.

### Maldives

A tourist visa for the Maldives is granted upon arrival if travelling for up to 30 days on an Australian Passport. Please start arranging your visa three weeks before departure to account for any delays due to consulate operating hours (Sri Lanka). Visa rules may have changed since Covid-19. Some countries and airlines may also require you to obtain an additional visa

# Important Information

prior to arrival. Please check with the nearest embassy, consulate or immigration department of the destination you're entering.

## **Important:**

- *Please check with the nearest Sri Lankan embassy, consulate or immigration department for the current tourist visa requirements and any updates regarding the e-visa for Sri Lanka.*
- *Please start arranging your visa three weeks before departure to account for any delays due to consulate operating hours.*
- *Visa rules are subject to change. Please check with the nearest embassy, consulate or immigration department of the destination/s you are visiting once you receive your travel documentation to ensure you have the most up to date information.*
- *It is your responsibility to be travel-ready and ensure that you are aware and comply with any destination or travel requirements, including the validity of all required travel documents.*
- *Passengers who are not Australian citizens must also check with the respective consulate or visa agency to determine what their visa requirements are and what personal identification is required.*
- *It is also important to note that some areas of employment, such as journalism, government authorities and charity organisations, may have additional restrictions in applying for visas. This may, in turn, affect the type of application required.*

## **Travel Insurance**

Embarking on your next trip is exciting, and while you hope the unexpected does not happen, it is best to be prepared. We strongly recommend you take out travel insurance when making your booking. Whether it's a potential medical emergency, a flight cancellation, a delayed suitcase, or an unforeseen event, it's important to ensure you're adequately protected. For more information or advice visit <https://www.tripadeal.com.au/travel-insurance>

## **Schedule Of Fees**

### **Voluntary Changes**

This includes booking changes requested by you, including but not limited to those changes requiring an airline ticket or a Purchase Confirmation reissue.

- Changes - \$100 per booking and any additional charges applied by the airline/cruise company/accommodation/other travel providers.

### **Name Changes Due To Passenger Error**

If the incorrect name has been provided, charges of \$100 per booking and any additional charges applied by the airline/cruise company/accommodation/other travel providers.

### **Supplier Fees**

In the event the tour package you have purchased is unable to proceed, and/or a Travel Supplier is unable to fulfil the tour due to external circumstances (Limitation of Liability e.g. a Force Majeure event), there may be a fee or amount of money that is withheld by our Suppliers and is unrecoverable. This may be due to non-refundable airline tickets, cancellation penalties with cruise cabins or unrecoverable payments with our land/accommodation partners. If refunds are not available from Suppliers, we will endeavour to obtain a travel credit on the best terms available and communicate these outcomes to you. In the event we are unable to obtain a refund or travel service credit, or part thereof, this cost is passed on to the customer as a Supplier Fee.