

# California & Alaska Highlights 2026

## UNITED STATES

### The Offer

See some of the most picturesque cities of the United States, visit the wild terrains of iconic national parks and embark on a cruise through the Inside Passage for the ultimate 18-day California and Alaska experience.

Start your journey in the sun-kissed city of angels, Los Angeles, where Hollywood Boulevard, Rodeo Drive and more can be enjoyed during a day at leisure. Travel to Sequoia National Park, known as the “Land of Giants” because of its giant sequoia trees, notably the General Sherman Tree, which dominates the Giant Forest. From Visalia, reach the famous Yosemite National Park to stand in awe of the towering Bridalveil Fall and El Capitan and Half Dome granite cliffs. From Sonoma, reach San Francisco, which features picturesque streets, the striking Golden Gate Bridge and Union Square, before jumping onboard the Ruby Princess. Recently renovated, this vessel offers many entertainment options, including Movies Under the Stars for an immersive audio experience, plus sumptuous dining options from Crown Grill to exciting new top-deck dining venues, including Slice Pizzeria and Coffee & Cones.

While onboard, enjoy wildlife sightings, inspiring landscapes and cultural encounters within the Inside Passage.

Depending on your choice of itinerary, you will reach the shores of old Gold Rush towns and former Russian settlements turned into Canadian towns, such as Skagway, Juneau, Ketchikan, Sitka, Prince Rupert and more. Bald eagles, brown bears, bison, moose, beavers, sea otters and a long list of birds inhabit these lands, plus humpback whales and other marine life.

End your experience back in San Francisco before returning home at the end of a fantastic bucket list experience.

With return international full-service flights, a 10-night Alaska Cruise with Princess Cruises, 5 nights of quality accommodation and 34 meals, including all meals while cruising, this is an experience you will be recommending to your loved ones!

**Want to extend your itinerary? Arrive Early in Los Angeles and Stay Behind in San Francisco options are available.**

Offer available for a limited time or until sold out. TRIP A DEAL PTY LTD: 50149240433

Updated: 21 Aug 2025 16:35:35

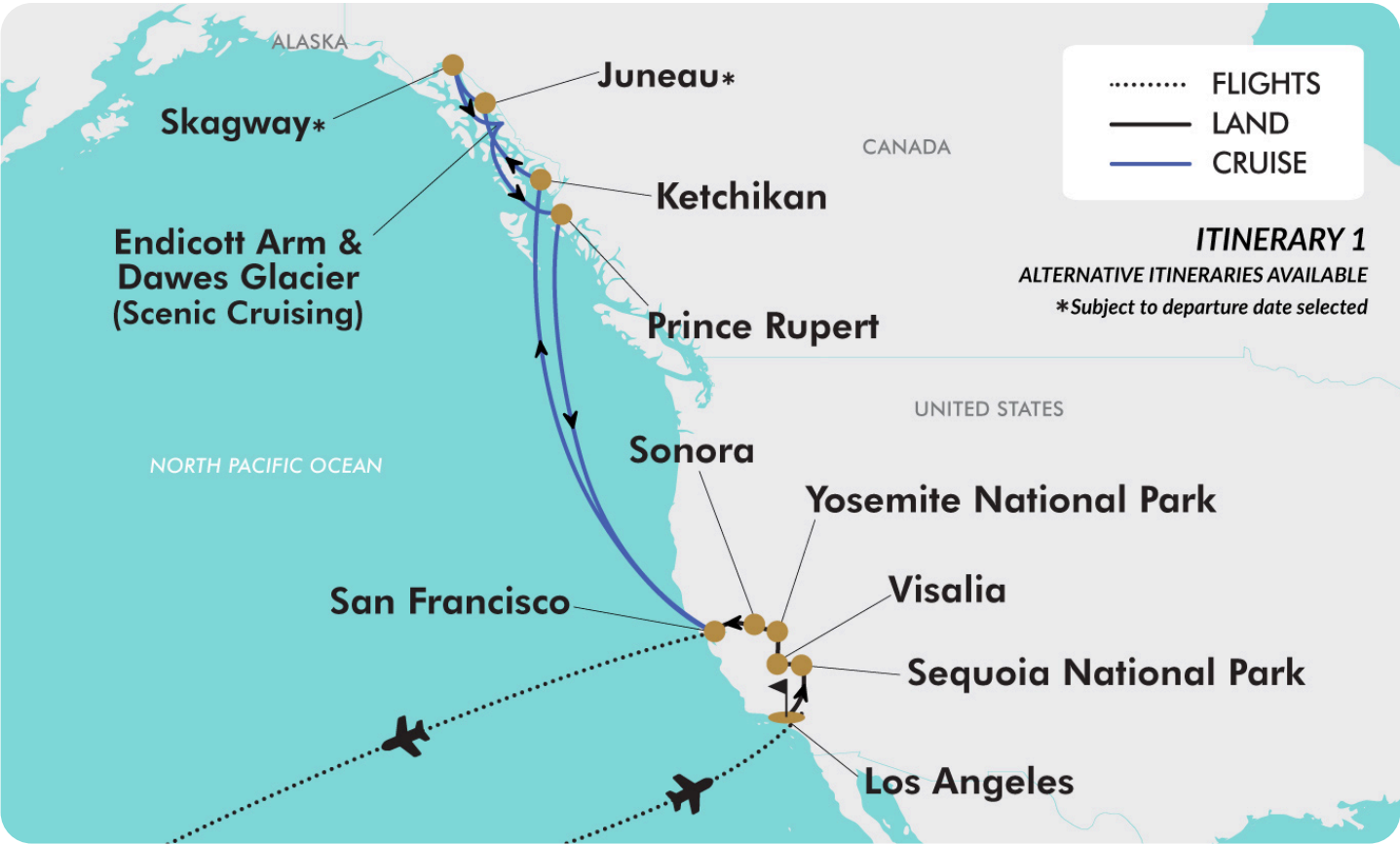
Have a question about this deal? We're here to help.  
Call our friendly team on 1300 158 912





18-DAY CRUISE & TOUR PACKAGE | CALIFORNIA & ALASKA HIGHLIGHTS 2026

The Map







## 18-DAY CRUISE & TOUR PACKAGE | CALIFORNIA & ALASKA HIGHLIGHTS 2026

# The Itinerary

### Itinerary 1

#### Day 1 Australia (or New Zealand) - Los Angeles, California, USA

Today, you'll depart from Australia (or New Zealand) for Los Angeles, California. On arrival, make your own way to your nearby airport hotel by complimentary shuttle or a short taxi ride. Once you've checked in, enjoy the remainder of your day at leisure.

##### *Please note:*

- *Standard check-in time is 15:00, so if you arrive early, luggage storage will be available at reception until check-in.*
- *Some flights may depart on Day 0 and some flights may involve a layover to and from the United States.*

**Overnight:** Holiday Inn LAX or similar, Los Angeles

**Meals included:** In-Flight

#### Day 2 Los Angeles Free Day

Today is a free day to explore Los Angeles at leisure.

**Overnight:** Holiday Inn LAX or similar, Los Angeles

**Meals included:** Breakfast

#### Day 3 Los Angeles - Sequoia National Park - Visalia

Today, meet your tour leader and depart Los Angeles for Sequoia National Park where you'll find huge mountains, rugged foothills, deep canyons, vast caverns and the world's largest trees. Take a moment to admire this natural treasure's diversity of landscapes, life and beauty.

Finish the day in Visalia, nestled in the foothills below the majestic Sierra Nevada and enjoy the remainder of the day at leisure after an approximately 380-kilometre travel day.

**Overnight:** La Quinta Inn or similar, Visalia

**Meals included:** Breakfast

#### Day 4 Visalia – Yosemite National Park – Sonora

Today, you'll journey to the majestic Yosemite National Park, stopping en route at Mariposa Grove, home to over 500 mature sequoias trees. The oldest tree in the Grove is the Grizzly Giant, which dates back around 3,000 years and stands approximately 64 metres tall. Get up close to the magnificent Yosemite Falls that cascade from a height of 739 metres before seeing the Half Dome, a rock formation with a distinct shape. Seek El Capitan, a granite rock monolith rising 914 metres above the valley floor and take in the spectacular scenery from Tunnel View, encompassing towering mountains, dense forests and the Bridalveil Falls.

Afterwards, you'll continue to Sonora, located in the beautiful Sierra Nevada Foothills in the heart of California's "Gold Country". Named after the miners from Sonora, Mexico, who settled the city in 1848, this place is known as the "Queen of the Southern Mines" as it still holds on to its historic downtown charm while thriving as the region's commercial, political and cultural centre. Here, you will check in to your hotel and enjoy the remainder of the day at leisure after an approximately 350-kilometre travel day.







## 18-DAY CRUISE & TOUR PACKAGE | CALIFORNIA & ALASKA HIGHLIGHTS 2026

### The Itinerary

#### Itinerary 1

**Overnight:** Sonora Inn or similar, Sonora  
**Meals included:** None

##### Day 5 Sonora - San Francisco

Today, you'll depart for San Francisco, which offers a tantalising mixture of history and modern sophistication and is one of the world's most photographed, filmed and documented cities. Built on several hills, the city is the gem of the magnificent bay at the foot of these hills. On a guided sightseeing tour you will see the business district, Union Square and Chinatown before crossing the world-famous Golden Gate Bridge to the picturesque town of Sausalito across the bay.

You'll then return to San Francisco and check in to your hotel, where you can enjoy the rest of the day at leisure after an approximately 300-kilometre travel day.

**Overnight:** Comfort Inn by the Bay or similar, San Francisco  
**Meals included:** Breakfast

##### Day 6 San Francisco - Begin 10-night Alaska Cruise with Princess Cruises Depart 15:00

Today, at the appropriate time, make your own way to the San Francisco Cruise Port, where you will board the Ruby Princess for your 10-night Alaska Cruise.

**Overnight:** Princess Cruises Ruby Princess  
**Meals included:** Breakfast; Lunch; Dinner

##### Day 7 At Sea

**Overnight:** Princess Cruises Ruby Princess  
**Meals included:** Breakfast; Lunch; Dinner

##### Day 8 At Sea

**Overnight:** Princess Cruises Ruby Princess  
**Meals included:** Breakfast; Lunch; Dinner

##### Day 9 Ketchikan, Alaska Arrive 09:00 - Depart 16:00

Ketchikan is known as Alaska's "First City" because it's the first major community travellers come to as they journey north. Located on an island, Ketchikan began life as an Indian fishing camp. The name Ketchikan comes from a Tlingit phrase that means "eagle with spread-out wings," a reference to a waterfall near town.

In the early 1900s, when gold was Alaska's claim to fame, fishing and timber industries were established in Ketchikan. The growth of these industries helped make this Inside Passage port Alaska's fourth-largest city.

Visitors to Ketchikan will be intrigued by its rich Native heritage, which includes the world's oldest collection of totem poles at Totem Heritage Center. The Haida, Tlingit and Tsimshian are all a part of the city's colourful history. Ketchikan, with its abundance







## 18-DAY CRUISE & TOUR PACKAGE | CALIFORNIA & ALASKA HIGHLIGHTS 2026

### The Itinerary

#### Itinerary 1

of salmon, is also a sportfishing paradise. Sightseers will be impressed with the scenic town and its surroundings, especially Misty Fjords National Monument (optional shore excursion).

**Overnight: Princess Cruises Ruby Princess**

**Meals included: Breakfast; Lunch; Dinner**

#### Day 10 Juneau OR Haines, Alaska

Juneau: 8th May, 18th May and 27th July 2026 Departure Dates

**Arrive 10:00 - Depart 21:00**

In 1880, it was slow going for Joe Juneau and Richard Harris as they searched for gold with the help of Native guides. After climbing mountains, forging streams and facing countless difficulties, they found nuggets "as large as beans."

From their discovery came three of the largest gold mines in the world. By the end of World War II, more than \$150 million in gold had been mined. Eventually, the mines closed, but the town Joe Juneau founded became the capital of Alaska, and the business of government replaced the business of gold.

Today, Juneau is famous not only for gold and government but also for its breathtakingly beautiful glaciers and stunning views of water and mountains.

Haines: 16th August 2026 Departure Date

**Arrive 12:00 - Depart 22:00**

A canoe slipped into the mouth of the Chilkat Inlet in November 1879, carrying Presbyterian missionary S. Hall Young and his friend John Muir. Young told the Chilkat Indians that he wanted

to build a Christian town, so he chose space between two waterways, the Chilkat River and the Lynn Canal, and the town of Haines was born.

During the 1900s, a permanent army post was built and named Fort William H. Seward. The post was abandoned in 1946 and sold to veterans who re-established it as Port Chilkoot. In 1970, the area became part of the City of Haines and when the fort became a national historic site in 1972, the name was changed back to Fort William H. Seward.

Haines is the home of the Chilkat Bald Eagle Preserve, where as many as 4,000 bald eagles gather each fall to feast on spawning salmon along the Chilkat River. Naturalists and photographers come from around the world to witness one of the most unusual and impressive sights in nature's kingdom. As many as 80 have been seen perched in a single tree and more than a hundred may be captured within the frame of a single photograph.

**Overnight: Princess Cruises Ruby Princess**

**Meals included: Breakfast; Lunch; Dinner**

#### Day 11 Skagway, Haines OR Juneau, Alaska

Skagway: 8th May and 18th May 2026 Departure Dates

**Arrive 07:00 - Departs 20:00**

Skagway was the gateway to the gold fields for the thousands who flocked to Alaska and the Yukon, hoping to strike it rich. Skagway may have boasted the shortest route to the Klondike, but it wasn't the easiest.







## 18-DAY CRUISE & TOUR PACKAGE | CALIFORNIA & ALASKA HIGHLIGHTS 2026

### The Itinerary

#### Itinerary 1

Over 100 years ago, the White Pass route through the Coast Mountains and the shorter but steeper Chilkoot Trail were used by countless stampeder. Many a would-be miner perished on the treacherous Chilkoot Trail.

The gold rush was a boon, and by 1898, Skagway was Alaska's largest town, with a population of about 20,000. Hotels, saloons, dance halls and gambling houses prospered. But when the gold yield dwindled in 1900, so did the population as miners quickly shifted to new finds in Nome. Today, Skagway has less than 1,000 residents. It still retains the flavour of the Gold Rush era.

Haines: 27th July 2026 Departure Date

**Arrive 07:00 - Depart 21:00**

Haines is the home of the Chilkat Bald Eagle Preserve, where as many as 4,000 bald eagles gather each fall to feast on spawning salmon along the Chilkat River. Naturalists and photographers come from around the world to witness one of the most unusual and impressive sights in nature's kingdom. As many as 80 have been seen perched in a single tree, and more than a hundred may be captured within the frame of a single photograph.

Juneau: 16th August 2026 Departure Date:

**Arrive 08:00 - Depart 21:00**

In 1880, it was slow going for Joe Juneau and Richard Harris as they searched for gold with the help of Native guides. After climbing mountains, forging streams and facing countless difficulties, they found nuggets "as large as beans." From their discovery came three of the largest gold mines in the world. By the end of World War II, more than \$150 million in gold had been

mined. Eventually, the mines closed, but the town Joe Juneau founded became the capital of Alaska, and the business of government replaced the business of gold.

**Overnight: Princess Cruises Ruby Princess**

**Meals included: Breakfast; Lunch; Dinner**

**Day 12 Endicott Arm and Dawes Glacier (Scenic Cruising), Alaska, USA**

**Arrive 05:00 - Depart 21:00**

This narrow fjord is located approximately 80 kilometres southeast of Juneau and is part of the Tracy Arm-Fords Terror Wilderness area. Breathtaking Endicott Arm extends over 48 kilometres long, nearly one-fifth of its area covered in ice. At the head of the fjord, tidewater glaciers, such as the Dawes Glacier, regularly expel enormous chunks of ice into the waters below in a magnificent process known as calving. During the summer, icebergs float along the surface of the glistening water in an array of sizes from just a few inches up to three stories wide.

Protected within the Tongass National Forest, Endicott Arm is a haven for wildlife. Black and brown bears, deer, wolves, harbour seals, mountain goats and a variety of seabirds have been spotted in the area. As you glide through the pristine fjord, you'll first pass by a lush forest where several beautiful waterfalls cascade down before being treated to views of snowcapped mountains and blue-tinged glaciers.

*Please note: Endicott Arm and Dawes Glacier are scenic cruising destinations. Your cruise will not dock on this day of the itinerary.*





## 18-DAY CRUISE & TOUR PACKAGE | CALIFORNIA & ALASKA HIGHLIGHTS 2026

### The Itinerary

#### Itinerary 1

**Overnight:** Princess Cruises Ruby Princess  
**Meals included:** Breakfast; Lunch; Dinner

**Day 13 Prince Rupert, British Columbia, Canada**  
**Arrive 07:00 - Depart 14:00**

Historic Prince Rupert captivates both mind and heart with its maritime history and awe-inspiring scenery. Located near the Alaska panhandle, Prince Rupert was established in 1910 as the intersection of commerce and trade for First Nations people and continued to develop as a town when selected as the western terminus for the Grand Turk Pacific Railway.

Nestled within a temperate rainforest, it experiences 220 days of rain each year, earning it the poetic nickname "The City of Rainbows." But from within the raindrops, Prince Rupert shines with heritage charms best seen in its Kwinitsa Railway Station Museum, The Museum of Northern British Columbia and the historic North Pacific Cannery compound (charges may apply).

Its stunning vistas captured in flight from the window of a seaplane adventure amaze travellers (not included). Abundant wildlife can be observed on land at the Khutzeymateen Grizzly Bear Sanctuary or seen from the deck of a wildlife cruise on the chilly waters where humpback whales and soaring eagles inspire (charges may apply).

You could choose to hike through the Butze Rainforest or the Exchamsiks River Provincial Park, then end the day with a stroll among the colourful gift shops, stopping in a charming bistro to sample the freshest catch of the day (charges may apply).

**Overnight:** Princess Cruises Ruby Princess  
**Meals included:** Breakfast; Lunch; Dinner

**Day 14 At Sea**

**Overnight:** Princess Cruises Ruby Princess  
**Meals included:** Breakfast; Lunch; Dinner

**Day 15 At Sea**

**Overnight:** Princess Cruises Ruby Princess  
**Meals included:** Breakfast; Lunch; Dinner

**Day 16 San Francisco, USA - Australia/New Zealand**  
**Arrive 07:00**

After breakfast, disembark and make your own way to the airport for your flight home.

*Please note: Some flights will depart late in the evening. Luggage storage is available at both the cruise port and San Francisco International Airport (fees apply).*

**Meals included:** Breakfast; In-Flight

**Day 17 In Transit**

**Meals included:** None







18-DAY CRUISE & TOUR PACKAGE | CALIFORNIA & ALASKA HIGHLIGHTS 2026

The Itinerary

Itinerary 1

Day 18 Arrive Australia/New Zealand

Meals included: None

Offer available for a limited time or until sold out. TRIP A DEAL PTY LTD: 50149240433 Updated: 21 Aug 2025 16:35:35

Have a question about this deal? We're here to help.  
Call our friendly team on 1300 158 912





## 18-DAY CRUISE & TOUR PACKAGE | CALIFORNIA & ALASKA HIGHLIGHTS 2026

# The Itinerary

### Itinerary 2

#### Day 1 Australia (or New Zealand) - Los Angeles, California, USA

Today, you'll depart from Australia (or New Zealand) for Los Angeles, California. On arrival, make your own way to your nearby airport hotel by complimentary shuttle or a short taxi ride. Once you've checked in, enjoy the remainder of your day at leisure.

##### *Please note:*

- *Standard check-in time is 15:00 so if you arrive early, luggage storage will be available at reception until check-in.*
- *Some flights may depart on Day 0 and some flights may involve a layover to and from the United States.*

**Overnight:** Holiday Inn LAX or similar, Los Angeles

**Meals included:** In-Flight

#### Day 2 Los Angeles Free Day

Today is a free day to explore Los Angeles at leisure.

**Overnight:** Holiday Inn LAX or similar, Los Angeles

**Meals included:** Breakfast

#### Day 3 Los Angeles - Sequoia National Park - Visalia

Today, meet your tour leader and depart Los Angeles for Sequoia National Park where you'll find huge mountains, rugged foothills, deep canyons, vast caverns and the world's largest trees. Take a moment to admire this natural treasure's diversity of landscapes, life and beauty.

Finish the day in Visalia, nestled in the foothills below the majestic Sierra Nevada and enjoy the remainder of the day at leisure after an approximately 380-kilometre travel day.

**Overnight:** La Quinta Inn or similar, Visalia

**Meals included:** Breakfast

#### Day 4 Visalia – Yosemite National Park – Sonora

Today, you'll journey to the majestic Yosemite National Park, stopping en route at Mariposa Grove, home to over 500 mature sequoias trees. The oldest tree in the Grove is the Grizzly Giant, dating back around 3,000 years and stands approximately 64 metres tall. Get up close to the magnificent Yosemite Falls that cascade from a height of 739 metres before seeing the Half Dome, a rock formation with a distinct shape. Seek El Capitan, a granite rock monolith rising 914 metres above the valley floor and take in the spectacular scenery from Tunnel View, which encompasses towering mountains, dense forests and the Bridalveil Falls.

Afterwards, you'll continue to Sonora, located in the beautiful Sierra Nevada Foothills in the heart of California's "Gold Country". Named after the miners from Sonora, Mexico, who settled the city in 1848, this place is known as the "Queen of the Southern Mines" as it still holds on to its historic downtown charm while thriving as the region's commercial, political and cultural centre. Here, you will check in to your hotel and enjoy the remainder of the day at leisure after an approximately 350-kilometre travel day.







## 18-DAY CRUISE & TOUR PACKAGE | CALIFORNIA & ALASKA HIGHLIGHTS 2026

### The Itinerary

#### Itinerary 2

**Overnight:** Sonora Inn or similar, Sonora  
**Meals included:** None

##### Day 5 Sonora - San Francisco

Today, you'll depart for San Francisco, which offers a tantalising mixture of history and modern sophistication and is one of the world's most photographed, filmed and documented cities. Built on several hills, the city is the gem of the magnificent bay at the foot of these hills. On a guided sightseeing tour you will see the business district, Union Square and Chinatown before crossing the world-famous Golden Gate Bridge to the picturesque town of Sausalito across the bay.

You'll then return to San Francisco and check in to your hotel, where you can enjoy the rest of the day at leisure after an approximately 300-kilometre travel day.

**Overnight:** Comfort Inn by the Bay or similar, San Francisco  
**Meals included:** Breakfast

##### Day 6 San Francisco - Begin 10-night Alaska Cruise with Princess Cruises Departs 15:00

Today, at the appropriate time, make your own way to the San Francisco Cruise Port, where you will board the Ruby Princess for your 10-night Alaska Cruise.

**Overnight:** Princess Cruises Ruby Princess  
**Meals included:** Breakfast; Lunch; Dinner

##### Day 7 At Sea

**Overnight:** Princess Cruises Ruby Princess  
**Meals included:** Breakfast; Lunch; Dinner

##### Day 8 At Sea

**Overnight:** Princess Cruises Ruby Princess  
**Meals included:** Breakfast; Lunch; Dinner

##### Day 9 Endicott Arm and Dawes Glacier (Scenic Cruising), Alaska

**Arrive 16:00 - Depart 20:00**

This narrow fjord is located approximately 80 kilometres southeast of Juneau and is part of the Tracy Arm-Fords Terror Wilderness area. The breathtaking Endicott Arm extends 48 kilometres long, and nearly one-fifth of its area is ice-covered. At the head of the fjord, tidewater glaciers, such as the Dawes Glacier, regularly expel enormous chunks of ice into the waters below in a magnificent process known as calving. During the summer, icebergs float along the surface of the glistening water in an array of sizes from just a few inches up to three stories wide.

Protected within the Tongass National Forest, Endicott Arm is a haven for wildlife. Black and brown bears, deer, wolves, harbour seals, mountain goats and a variety of seabirds have been spotted in the area. As you glide through the pristine fjord, you'll first







## 18-DAY CRUISE & TOUR PACKAGE | CALIFORNIA & ALASKA HIGHLIGHTS 2026

### The Itinerary

#### Itinerary 2

pass by a lush forest where several beautiful waterfalls cascade down before being treated to views of snowcapped mountains and blue-tinged glaciers.

*Please note: Endicott Arm and Dawes Glacier are scenic cruising destinations. Your cruise will not dock on this day of the itinerary.*

**Overnight: Princess Cruises Ruby Princess**  
**Meals included: Breakfast; Lunch; Dinner**

#### Day 10 Skagway, Alaska Arrive 07:00 - Depart 20:00

Skagway was the gateway to the gold fields for the thousands who flocked to Alaska and the Yukon, hoping to strike it rich. Skagway may have boasted the shortest route to the Klondike, but it wasn't the easiest.

Over 100 years ago, the White Pass route through the Coast Mountains and the shorter but steeper Chilkoot Trail were used by countless stampedeers. Many a would-be miner perished on the treacherous Chilkoot Trail.

The gold rush was a boon, and by 1898, Skagway was Alaska's largest town, with a population of about 20,000. Hotels, saloons, dance halls and gambling houses prospered. But when the gold yield dwindled in 1900, so did the population as miners quickly shifted to new finds in Nome.

Today, Skagway has less than 1,000 residents. It still retains the flavour of the gold rush era.

**Overnight: Princess Cruises Ruby Princess**  
**Meals included: Breakfast; Lunch; Dinner**

#### Day 11 Juneau, Alaska Arrive 06:00 - Depart 16:00

In 1880, it was slow going for Joe Juneau and Richard Harris as they searched for gold with the help of Native guides. After climbing mountains, forging streams and facing countless difficulties, they found nuggets "as large as beans."

From their discovery came three of the largest gold mines in the world. By the end of World War II, more than \$150 million in gold had been mined. Eventually, the mines closed, but the town Joe Juneau founded became the capital of Alaska, and the business of government replaced the business of gold.

Today, Juneau is famous not only for its gold and government but also for its breathtakingly beautiful glaciers and stunning views of both water and mountains.

**Overnight: Princess Cruises Ruby Princess**  
**Meals included: Breakfast; Lunch; Dinner**

#### Day 12 Ketchikan, Alaska, USA Arrive 10:00 - Depart 18:00

Ketchikan is known as Alaska's "First City" because it's the first major community travellers come to as they journey north. Located on an island, Ketchikan began life as an Indian fishing camp. The name Ketchikan comes from a Tlingit phrase that means "eagle with spread-out wings," a reference to a waterfall near town.

Offer available for a limited time or until sold out. TRIP A DEAL PTY LTD: 50149240433

Updated: 21 Aug 2025 16:35:35

Have a question about this deal? We're here to help.  
 Call our friendly team on 1300 158 912





## 18-DAY CRUISE & TOUR PACKAGE | CALIFORNIA & ALASKA HIGHLIGHTS 2026

### The Itinerary

#### Itinerary 2

In the early 1900s, when gold was Alaska's claim to fame, fishing and timber industries were established in Ketchikan. The growth of these industries helped make this Inside Passage port Alaska's fourth-largest city.

Visitors to Ketchikan will be intrigued by its rich Native heritage, which includes the world's oldest collection of totem poles at Totem Heritage Center. The Haida, Tlingit and Tsimshian are all a part of the city's colourful history. Ketchikan, with its abundance of salmon, is also a sportfishing paradise. Sightseers will be impressed with the scenic town and its surroundings, especially Misty Fjords National Monument (optional shore excursion).

**Overnight: Princess Cruises Ruby Princess**

**Meals included: Breakfast; Lunch; Dinner**

#### Day 13 Prince Rupert, British Columbia, Canada

**Arrive 07:00 - Depart 14:00**

Historic Prince Rupert captivates the mind and heart with its maritime history and awe-inspiring scenery. Located near the Alaska panhandle, Prince Rupert was established in 1910 as the intersection of commerce and trade for First Nations people and continued to develop as a town when selected as the western terminus for the Grand Turk Pacific Railway.

Nestled within a temperate rainforest, it experiences 220 days of rain each year, earning it the poetic nickname "The City of Rainbows." But from within the raindrops, Prince Rupert shines with heritage charms best seen in its Kwinitsa Railway Station Museum, The Museum of Northern British Columbia and the historic North Pacific Cannery compound (charges may apply).

Its stunning vistas captured in flight from the window of a seaplane adventure amaze travellers (not included). Abundant wildlife can be observed on land at the Khutzeymateen Grizzly Bear Sanctuary or seen from the deck of a wildlife cruise on the chilly waters where humpback whales and soaring eagles inspire (charges may apply).

You could choose to hike through the Butze Rainforest or the Exchamsiks River Provincial Park, then end the day with a stroll among the colourful gift shops, stopping in a charming bistro to sample the freshest catch of the day (charges may apply).

**Overnight: Princess Cruises Ruby Princess**

**Meals included: Breakfast; Lunch; Dinner**

#### Day 14 At Sea

**Overnight: Princess Cruises Ruby Princess**

**Meals included: Breakfast; Lunch; Dinner**

#### Day 15 At Sea

**Overnight: Princess Cruises Ruby Princess**

**Meals included: Breakfast; Lunch; Dinner**

#### Day 16 San Francisco, USA - Australia/New Zealand

**Arrive 07:00**

After breakfast, disembark and make your own way to the airport for your flight home.







## 18-DAY CRUISE & TOUR PACKAGE | CALIFORNIA & ALASKA HIGHLIGHTS 2026

### The Itinerary

#### Itinerary 2

*Please note: Some flights will depart late in the evening. Luggage storage is available at both the cruise port and San Francisco International Airport (fees apply).*

**Meals included: Breakfast; In-Flight**

#### Day 17 In Transit

**Meals included: None**

#### Day 18 Arrive Australia/New Zealand

**Meals included: None**





## 18-DAY CRUISE & TOUR PACKAGE | CALIFORNIA & ALASKA HIGHLIGHTS 2026

# The Itinerary

### Itinerary 3

#### Day 1 Australia (or New Zealand) - Los Angeles, California, USA

Today you will depart from Australia (or New Zealand) for Los Angeles, California. On arrival, make your own way to your nearby airport hotel by complimentary shuttle or a short taxi ride. Once you've checked in, enjoy the remainder of your day at leisure.

**Please note:**

- *Standard check-in time is 15:00 so if you arrive early, luggage storage will be available at reception until check-in.*
- *Some flights may depart on Day 0, and some flights may involve a layover to and from the United States.*

**Overnight:** Holiday Inn LAX or similar, Los Angeles

**Meals included:** In-Flight

#### Day 2 Los Angeles Free Day

Today is a free day to explore Los Angeles at leisure.

**Overnight:** Holiday Inn LAX or similar, Los Angeles

**Meals included:** Breakfast

#### Day 3 Los Angeles - Sequoia National Park - Visalia

Today, meet your tour leader and depart Los Angeles for Sequoia National Park where you'll find huge mountains, rugged foothills, deep canyons, vast caverns and the world's largest trees. Take a moment to admire this natural treasure's diversity of landscapes, life and beauty.

Finish the day in Visalia, nestled in the foothills below the majestic Sierra Nevada and enjoy the remainder of the day at leisure after an approximately 380-kilometre travel day.

**Overnight:** La Quinta Inn or similar, Visalia

**Meals included:** Breakfast

#### Day 4 Visalia – Yosemite National Park – Sonora

Today, you'll journey to the majestic Yosemite National Park, stopping en route at Mariposa Grove, home to over 500 mature sequoias trees. The oldest tree in the Grove is the Grizzly Giant, which dates back around 3,000 years and stands approximately 64 metres tall. Get up close to the magnificent Yosemite Falls that cascade from a height of 739 metres before seeing the Half Dome, a rock formation with a distinct shape. Seek El Capitan, a granite rock monolith rising 914 metres above the valley floor and take in the spectacular scenery from Tunnel View, which encompasses towering mountains, dense forests and the Bridalveil Falls.

Afterwards, you'll continue to Sonora, located in the beautiful Sierra Nevada Foothills in the heart of California's "Gold Country". Named after the miners from Sonora, Mexico, who settled the city in 1848, this place is known as the "Queen of the Southern Mines" as it still holds on to its historic downtown charm while thriving as the region's commercial, political and cultural centre. Here, you will check in to your hotel and enjoy the remainder of the day at leisure after an approximately 350-kilometre travel day.





## 18-DAY CRUISE & TOUR PACKAGE | CALIFORNIA & ALASKA HIGHLIGHTS 2026

### The Itinerary

#### Itinerary 3

**Overnight:** Sonora Inn or similar, Sonora

**Meals included:** None

##### Day 5 Sonora - San Francisco

Today you'll depart for San Francisco which offers a tantalising mixture of history and modern sophistication and is one of the most photographed, filmed and documented cities in the world. Built on several hills, the city is the gem of the magnificent bay at the foot of these hills. On a guided sightseeing tour you will see the business district, Union Square and Chinatown before crossing the world-famous Golden Gate Bridge to the picturesque town of Sausalito across the bay. You'll then return to San Francisco and check in to your hotel where you can enjoy the rest of the day at leisure after an approximately 300-kilometre travel day.

**Overnight:** Hotel Zoe or similar, San Francisco

**Meals included:** Breakfast

##### Day 6 San Francisco - Begin 10-night Alaska Cruise with Princess Cruises

**Depart 15:00**

Today, at the appropriate time, make your own way to the San Francisco Cruise Port, where you will board the Ruby Princess for your 10-night Alaska Cruise.

**Overnight:** Princess Cruises Ruby Princess

**Meals included:** Breakfast; Lunch; Dinner

##### Day 7 At Sea

**Overnight:** Princess Cruises Ruby Princess

**Meals included:** Breakfast; Lunch; Dinner

##### Day 8 At Sea

**Overnight:** Princess Cruises Ruby Princess

**Meals included:** Breakfast; Lunch; Dinner

##### Day 9 Sitka, Alaska

**Arrive 14:00 - Depart 22:00**

In 1799, the Russian explorer Alexander Baranof founded New Archangel next to the Tlingit village of Sitka.

This was the beginning of the permanent Russian settlement in North America. But New Archangel was destroyed three years later by the Tlingit Indians in an attempt to reclaim their ancestral home. Their brief victory ended in 1804 when Baranof returned with warships and retook Sitka in the Battle of Alaska. Sitka was now the capital of Russian America.

In 1867, the Stars and Stripes replaced the Imperial Russian flag when the United States purchased Alaska. With the discovery of gold and the rapid population growth that followed, Alaska's capital was moved north to Juneau in 1906.

Today, picturesque Sitka, sitting opposite snow-capped Mount Edgecumbe, is known for its fishing, the annual summer classical-music festival and many historic visitor attractions.





## 18-DAY CRUISE & TOUR PACKAGE | CALIFORNIA & ALASKA HIGHLIGHTS 2026

### The Itinerary

#### Itinerary 3

**Overnight:** Princess Cruises Ruby Princess

**Meals included:** Breakfast; Lunch; Dinner

#### Day 10 Glacier Bay National Park (Scenic Cruising), Alaska

**Arrive 09:15 - Depart 18:15**

Princess is one of a select few cruise lines permitted to cruise the pristine waters of Glacier Bay, the highlight of your Alaska cruise. Just west of Juneau, this breathtaking national park boasts some of the world's most spectacular tidewater glaciers, such as Margerie Glacier, which often drops colossal chunks of ice into the sea. Not surprisingly, Glacier Bay National Park and its epic ice giants are part of a UNESCO World Heritage Site comprising Alaska's magnificent park system.

During your scenic cruise, friendly Park Rangers will join the ship to share their knowledge of this amazing place and host a fun Junior Ranger program for kids. They may even be able to help you identify Glacier Bay's abundant wildlife, including humpback whales, sea otters, porpoises, harbour seals, black bears, mountain goats, bald eagles and large colonies of seabirds.

Take in the awe-inspiring scenery as you enjoy an unforgettable day of sailing through this dazzling park, where you'll glide along emerald waters and past calving icebergs.

*Please note: Glacier Bay National Park is a scenic cruising destination. Your cruise will not dock on this day of the itinerary.*

**Overnight:** Princess Cruises Ruby Princess

**Meals included:** Breakfast; Lunch; Dinner

#### Day 11 Skagway, Alaska

**Arrive 06:00 - Depart 17:00**

Skagway was the gateway to the gold fields for the thousands who flocked to Alaska and the Yukon, hoping to strike it rich. Skagway may have boasted the shortest route to the Klondike, but it wasn't the easiest.

Over 100 years ago, the White Pass route through the Coast Mountains and the shorter but steeper Chilkoot Trail were used by countless stampedeers. Many a would-be miner perished on the treacherous Chilkoot Trail.

The gold rush was a boon, and by 1898, Skagway was Alaska's largest town, with a population of about 20,000. Hotels, saloons, dance halls and gambling houses prospered. But when the gold yield dwindled in 1900, so did the population as miners quickly shifted to new finds in Nome.

Today, Skagway has less than 1,000 residents but still retains the flavour of the gold rush era.

**Overnight:** Princess Cruises Ruby Princess

**Meals included:** Breakfast; Lunch; Dinner

#### Day 12 Ketchikan, Alaska, USA

**Arrive 13:00 - Depart 21:00**

Ketchikan is known as Alaska's "First City" because it's the first major community travelers visit as they journey north. Located on an island, Ketchikan began life as an Indian fishing camp. The name Ketchikan comes from a Tlingit phrase that means "eagle with spread-out wings," a reference to a waterfall near town.





## 18-DAY CRUISE & TOUR PACKAGE | CALIFORNIA & ALASKA HIGHLIGHTS 2026

### The Itinerary

#### Itinerary 3

In the early 1900s, when gold was Alaska's claim to fame, fishing and timber industries were established in Ketchikan. The growth of these industries helped make this Inside Passage port Alaska's fourth-largest city.

Visitors to Ketchikan will be intrigued by its rich Native heritage, which includes the world's oldest collection of totem poles at Totem Heritage Center. The Haida, Tlingit and Tsimshian are all a part of the city's colourful history. Ketchikan, with its abundance of salmon, is also a sportfishing paradise. Sightseers will be impressed with the scenic town and its surroundings, especially Misty Fjords National Monument (optional shore excursion).

**Overnight: Princess Cruises Ruby Princess**

**Meals included: Breakfast; Lunch; Dinner**

#### Day 13 Prince Rupert, British Columbia, Canada

**Arrive 09:00 - Depart 16:00**

Historic Prince Rupert captivates both mind and heart with its maritime history and awe-inspiring scenery. Located near the Alaska panhandle, Prince Rupert was established in 1910 as the intersection of commerce and trade for First Nations people and continued to develop as a town when selected as the western terminus for the Grand Turk Pacific Railway.

Nestled within a temperate rainforest, it experiences 220 days of rain each year, earning it the poetic nickname "The City of Rainbows." But from within the raindrops, Prince Rupert shines with heritage charms best seen in its Kwinitsa Railway Station Museum, The Museum of Northern British Columbia and the historic North Pacific Cannery compound (charges may apply).

Its stunning vistas captured in flight from the window of a seaplane adventure amaze travellers (not included). Abundant wildlife can be observed on land at the Khutzeymateen Grizzly Bear Sanctuary or seen from the deck of a wildlife cruise on the chilly waters where humpback whales and soaring eagles inspire (charges may apply).

You could choose to hike through the Butze Rainforest or the Exchamsiks River Provincial Park, then end the day with a stroll among the colourful gift shops, stopping in a charming bistro to sample the freshest catch of the day (charges may apply).

**Overnight: Princess Cruises Ruby Princess**

**Meals included: Breakfast; Lunch; Dinner**

#### Day 14 At Sea

**Overnight: Princess Cruises Ruby Princess**

**Meals included: Breakfast; Lunch; Dinner**

#### Day 15 At Sea

**Overnight: Princess Cruises Ruby Princess**

**Meals included: Breakfast; Lunch; Dinner**

#### Day 16 San Francisco, USA - Australia/New Zealand

**Arrive 07:00**

After breakfast, disembark and make your own way to the airport for your flight home.

Offer available for a limited time or until sold out. TRIP A DEAL PTY LTD: 50149240433

Updated: 21 Aug 2025 16:35:35

Have a question about this deal? We're here to help.  
Call our friendly team on 1300 158 912





## 18-DAY CRUISE & TOUR PACKAGE | CALIFORNIA & ALASKA HIGHLIGHTS 2026

### The Itinerary

#### Itinerary 3

*Please note: Some flights will depart late in the evening. Luggage storage is available at both the cruise port and San Francisco International Airport (fees apply).*

**Meals included: Breakfast; In-Flight**

#### Day 17 In Transit

**Meals included: None**

#### Day 18 Arrive Australia/New Zealand

**Meals included: None**

Offer available for a limited time or until sold out. TRIP A DEAL PTY LTD: 50149240433

Updated: 21 Aug 2025 16:35:35

Have a question about this deal? We're here to help.  
Call our friendly team on 1300 158 912

18

FREQUENT  
FLYER



Trip  
aDeal





18-DAY CRUISE & TOUR PACKAGE | CALIFORNIA & ALASKA HIGHLIGHTS 2026

Tour Inclusions

HIGHLIGHTS

- Tour the highlights of California's cities and national parks
- Enjoy time at leisure in Los Angeles
- Visit Union Square, Chinatown, the Golden Gate Bridge and more on a sightseeing tour of San Francisco
- Discover the magnificent Yosemite National Park, one of the most beautiful parks in the state of California
- Explore Sequoia National Park, home to huge mountains, deep canyons and the world's largest trees
- Cruise through Alaska's scenic Inside Passage
- Visit Ketchikan, known as 'The Salmon Capital of the World'
- Admire the stunning fjords and icebergs of Endicott Arm or Glacier Bay National Park
- Visit the gold rush town of Skagway in Alaska (select departure dates only)
- Admire the scenic beauty and heritage charm of Prince Rupert, also known as 'The City of Rainbows'
- Look out for wildlife including humpback whales and seals

FLIGHTS

Return international full-service flights (economy class), surcharges may apply

CRUISE

- 10-night Alaska Cruise with Princess Cruises
- Sail aboard the incredible Ruby Princess

ACCOMMODATION

5 nights of quality accommodation

DINING

Enjoy 34 meals, including all meals while cruising

ESSENTIALS

- English-speaking tour guides
- Airline taxes and surcharges

TRANSPORT

Transportation by private air-conditioned vehicles



# Important Information

*\*Please note: All information provided in this brochure is subject to both change and availability. Prior to purchase please check the current deal for up-to-date information. If you have already purchased this deal, the terms and conditions on your Purchase Confirmation apply and take precedence over the information in this brochure.*

## Booking Information

After purchase, you will receive a receipt and a Purchase Confirmation, directing you to an online Passenger Information Form. You must complete the Passenger Information Form within 72 hours of purchase.

Any special requests, preferences and optional extras MUST be clearly stated in your Passenger Information Form. Any change requested after submitting your Passenger Information Form cannot be guaranteed, is strictly subject to availability and will incur surcharges as outlined in the Schedule of Fees below.

*Please note: All countries and territories have different entry requirements in relation to vaccinations, quarantine/isolation periods and travel restrictions. Due to the evolving nature, we would ask all of our customers to monitor, meet and adhere to the specific requirements of their intended destination(s) in the lead-up to and immediately before travel, as well as any requirements post-travel upon their return.*

## Our Policies

### Cancellation & Refund Policy

By placing a booking with us, you acknowledge the following important information:

- **we act as your booking agent ;**

TripADeal is a booking services provider, and curates the Travel Offers available on our website. We act as your booking agent, and we receive payment for the Booking Services as part of the booking price, however, we do not provide any of the Travel Services (flights, accommodation, tours or other products or services) included in your booking – the Travel Services are provided by a number of third party Travel Suppliers.

- **each booking is unique ;** our Travel Offers are made up of a variety of different components and are, during the booking process, uniquely tailored to suit your requirements, for example, departure dates and ports, flight and room upgrades, tour inclusions, etc.

- **changes/modifications to your booking may not be possible ;** once your booking has been made, changes or modifications may not be possible, and where possible, may incur a fee. It is important to ensure that the information you provide during the booking process is accurate and up to date, and that you read the Travel Offer carefully before placing your order.

- **Travel Offers are a package ;** our Travel Offers have been curated into package offerings and must be used as a package – individual components cannot be used independently of the full package offering.

- **our Travel Offers are generally non-refundable ;** in order to provide great value Travel Offers, we work with a variety of Travel Suppliers to find the best deals – this often means the Travel Suppliers' offerings are non-refundable to ensure the best price. We recommend that you obtain travel insurance as soon as you make a booking with us.

To read more about our [Cancellation and Refund Policy](#), please click here.

### General Terms & Conditions

By placing your booking with us, you acknowledge and agree to our [Terms & Conditions](#), [Privacy Policy](#) and [Cancellation Policy](#).

## Offer Essentials

This Travel Offer is valid for travel on selected dates until the 16th August 2026. Minimum group size 20, maximum group size 40 per vehicle.

This Travel Offer is priced per person based on a twin share.

### Departure Dates & Surcharges

See checkout for live dates and availability.

## Single Traveller Supplement

For solo travellers, a mandatory single supplement applies.

- Inside Cabin: \$2,740
- Ocean View Cabin: \$3,060
- Balcony Cabin: \$3,970

*Please note: Accommodation for single customers who are travelling on a tour or cruise package may be in a single room, depending on availability.*

## Child Policy

- No child discounts are offered. The full price applies to all children travelling with their parents.
- Valid for children 8 years old and over.

*Please note: Children must be accompanied by a responsible adult 21 years old and over to travel. No unaccompanied minors are allowed.*

## Flights

### Departure Cities

Sydney, \*Melbourne, \*Brisbane, \*Adelaide, \*Perth or \*Auckland.

### Departure City Surcharges

- Melbourne, Brisbane, Auckland: \$300 per person.
- Adelaide: \$600 per person.
- Perth: \$800 per person.

### International Flight(s)

- Cabin Class: Economy Class

*Please note: We cannot accommodate one-way flights. Travellers must take all included flights within the package, and any flights intentionally forfeited will result in later flights being subject to cancellation.*

### Preferred Airline Surcharge

- Cabin Class: Economy Class
- United Airlines: \$300 per person
- Qantas: \$600 per person

*Please note:*

- *Preferred airlines are subject to availability. If we are unable to fulfil your request, the above extra cost will be refunded.*



# Important Information

- On any upgrade purchase, short-haul flights and domestic flight sectors are not guaranteed, subject to aircraft configuration.
- In the event that a purchased stopover package and a purchased preferred airline upgrade are not compatible, you will have the option to receive a refund for the preferred airline upgrade or be offered an alternative stopover city option, e.g if you choose to fly with Singapore Airlines you cannot stopover in Dubai.
- Preferred airline refers to the marketing carrier and could include codeshare partners.

## Arrive Early & Stay Behind Options

Fly out and return home up to 60 days pre and post your tour dates.

### Arrive Early

Los Angeles - From \$350 per person, subject to availability.

### Stay Behind

San Francisco - From \$350 per person, subject to availability.

*Please note:*

### • Exclusions:

*This fee does not include extra nights' accommodation, meals or airport transfers.*

### • Cancellations & Changes:

*Flight booking changes or cancellations after air tickets have been issued are not guaranteed and may incur additional fees and fare difference, subject to the airline cancellation and change policies. Flight changes are subject to availability at the time of booking.*

### • High-Season:

*A high-season Arrive Early or Stay Behind can be purchased for an additional charge, subject to availability. For pricing, please refer to the cart.*

### • + 60 days:

*You can fly out up to 60 days before your package's start date, and/or return home 60 days after your package's end date. Should you wish to fly out or return home for more than 60 days from the tour, please contact us to request availability. Additional costs may apply.*

### • Estimated dates:

*Your estimated departure, return, and arrival dates are all subject to availability and may vary. The confirmed schedule for all flights will be provided when you receive your flight tickets.*

### • High season surcharges apply to flights departing between the below date ranges:

20th December 2025 - 4th January 2026  
5th January 2026 - 31st January 2026  
3rd April 2026 - 20th April 2026  
22nd May 2026 - 2nd August 2026  
18th September 2026 - 9th October 2026  
12th December 2026 - 18th December 2026  
19th December 2026 - 3rd January 2027  
4th January 2027 - 26th January 2027

## Stopover Packages

Not available.

## Flight Class Upgrades

Business or Premium Economy Class: For pricing, please refer to the payment cart at checkout.

*Please note:*

- Flight upgrades are subject to availability and pricing changes (if we cannot fulfil your request, the upgrade cost will be refunded).
- On any upgrade purchase, short-haul flights and domestic flight sectors are not guaranteed.

## Missed Flights

If you fail to arrive for your outbound flight, you risk all flight and land arrangements in your destination being automatically cancelled by the airlines and land operator, respectively. Additional fees may apply to reinstate these services. If you miss your flight for whatever reason, please contact us as soon as possible to make arrangements.

## Cruise

### Princess Cruises Ruby Princess

Fresh from a multi-million dollar renovation, Ruby Princess is a luminous jewel on the seas and a romantic destination in itself. She offers nearly 900 balconies from which to view the world, an array of entertainment options including Movies Under the Stars®, now with the industry's best 7.1 surround sound for an immersive audio experience, and sumptuous dining options from Crown Grill to exciting new top deck dining venues including Slice Pizzeria and Coffee & Cones.

## Onboard Currency

USD

## Cabins/Staterooms

Interior Cabin: Approximately 14-15 m<sup>2</sup>.

These staterooms are the perfect place to recharge your batteries, featuring two Twin beds or a Queen-size bed. Other amenities include a refrigerator, hair dryer, TV, closet and bathroom with shower.

- Comfortable Queen or two Twin beds.
- Refrigerator.
- Flat-panel television.
- Private bathroom with shower.
- 100% cotton, high-thread count linens.
- Spacious closet.

Oceanview Cabin: Approximately 13-19 m<sup>2</sup>

Enjoy the added benefit of a view of the ocean from either a picture window or porthole that brings in natural light. This stateroom includes all the amenities of an interior room.

- A spacious picture window for memorable views.
- Comfortable Queen or two Twin beds.
- Refrigerator.
- Flat-panel television.
- Private bathroom with shower.
- 100% cotton, high-thread count linens.
- Spacious closet.
- Desk with chair.
- Hair dryer and bathroom amenities.



# Important Information

- Digital security safe.

Balcony Cabin: 19-20 m<sup>2</sup>, including balcony

This impressive stateroom offers the added indulgence of a balcony and gives you more space than a standard stateroom. Enjoy your own private outdoor space with a table, two chairs, and a relaxing view of the inspiring scenery surrounding you, whether a beautiful sunset over the ocean or a new city to explore. It's also perfect to enjoy cocktails before dinner or a leisurely breakfast.

- Balcony with 2 chairs and table.
- Floor-to-ceiling sliding glass doors.
- Comfortable queen or two twin beds.
- Refrigerator.
- Flat-panel television.
- Private bathroom with shower.
- 100% cotton, high-thread count linens.
- Spacious closet.
- Desk with chair.
- Hair dryer and bathroom amenities.
- Digital security safe.

*Please note: All cabins are subject to availability; some cabins may have restricted views.*

## Cruise Arrival & Departure Times

Please, keep in mind that the provided cruise arrival and departure times are approximate and will be finalised upon receipt of your cruise tickets.

## Accommodation

### Accommodation Used

3-Star Properties (Self-Rated)

- Los Angeles: Holiday Inn LAX or similar.
- Visalia: La Quinta Inn or similar.
- Sonora: Sonora Inn or similar.
- San Francisco: Hotel Zoe or similar

*Please note: Accommodation/rooms offered are based on a lead-in room type and are subject to availability based on seasonality. In the instance a property is not available, a similar standard of accommodation will be provided. Properties will be confirmed and included in your travel pack, which you will receive 4-6 weeks before travel.*

## Extra Nights

Not available.

*Please note: If you are interested in booking additional nights of accommodation pre or post-tour, please wait until you receive your travel documentation approximately 4-6 weeks before departure for the confirmed list of hotels. If booking your own additional accommodation directly with the hotel, please be aware that you may be required to change rooms at the start/end of your tour.*

## Maximum Room Capacity

2 people.

## Triple Share

Not available.

## Bedding Configuration

Twin or double (subject to availability).

## Optional Tours/activities

*Please note:*

- Some tours or shore excursions require minimum numbers to operate.
- Shore excursions can be booked/reserved directly with the cruise line before travel (subject to availability)
- Shore excursions can also be booked whilst onboard (subject to availability).
- Shore excursion programmes and itineraries may vary depending on local conditions and/or any unforeseen events concerning the timing on the day of the tour. Some excursions are very popular, and therefore availability cannot always be guaranteed, it is advisable to book in advance to avoid disappointment.

## Exclusions

- Visa fees and requirements
- Domestic transfers and flights not stated in the deal offer
- Meals/beverages not stated in the deal offer
- Highly recommended gratuities/tipping for land tour
- Expected gratuities/tipping for cruise
- Personal expenses
- Travel insurance

- Any costs associated with an interruption to your tour as a result of an airline schedule change or cancellation
- Mandatory city tax

## Gratuities/tipping

### Land

Gratuities (tips) are not included for the services of the tour leader (when available) and driver throughout the tour. The highly recommended and customary tip is \$5 USD for the driver and \$7 USD for the guide, per person per day where touring/transfer services are provided. This covers the guide/leader and the driver and will be collected on tour.

*Please note: Tipping for services provided is always a matter of personal discretion; however, please be aware that many locals consider tipping part of their normal remuneration, and they may approach you for payment; there's no need to be intimidated by the request.*

### Cruise

Gratuities (tips) are not included for the cruise staff's services throughout this tour's cruise component. Princess Cruises is an internationally registered company & operates to US & European standards, both of which have an economy driven by a tipping culture. Gratuities are expected on your cruise and will be charged to your onboard account from USD\$17.00 per person per day. If you have any questions regarding the gratuities on your cruise, please speak to the guest services staff onboard the ship.

## Other Important Information

### TOUR GUIDE VS. TOUR LEADER

#### Tour Guide

Often locals with intimate knowledge of an area, its culture, and history. Their role entails providing commentary, routing the tour, and seeing that people have a good time. They are a licensed, qualified expert who supplies specific information on the history, art, architecture and culture of the city/village/attraction where they are



# Important Information

guiding the tour. The guide meets the group at the required place and leaves it at the end of the tour; they do not travel with the group.

## Tour Leader

An experienced person tasked with ensuring the smooth operation of tours, as well as providing practical support to passengers throughout the whole trip. Their role primarily includes assisting with accommodation, transportation between locations, and communication with tour guides at each stop. A tour leader may provide general guidance around a city or village and offer information on the place visited on the bus. However, they are not required to have specific art, architecture, or historical knowledge. They are not allowed to provide a guided tour or commentary of a city/village/attraction once there and, if caught doing so, can be fined.

*Please note: Tour leaders/guides are not a standard inclusion in all travel offers. Tour leaders/guides will only be made available when required to enhance the experience of the destination featured.*

## CLIMATE & AVERAGE TEMPERATURES

### Los Angeles, California

#### Fall (September-November)

Warm days with cooling evenings.  
Average Highs: 75–85°F (24–29°C)  
Average Lows: 55–65°F (13–18°C)  
Rain is minimal, but late November may see occasional showers.

#### Winter (December-February)

Mild temperatures, occasional rain.  
Average Highs: 65–70°F (18–21°C)  
Average Lows: 45–50°F (7–10°C)  
Rainfall peaks in January and February.

#### Spring (March-May)

Pleasant and warm with increasing sunshine.  
Average Highs: 70–75°F (21–24°C)  
Average Lows: 50–55°F (10–13°C)  
Rain diminishes by late spring.

### Juneau, Alaska

#### Spring (March-May)

Highs:  
March: 35–40°F (2–4°C)  
May: 55°F (13°C)  
Lows:  
March: 25°F (-4°C)  
May: 40°F (4°C)  
Overview: Cool and wet, with snow gradually transitioning to rain. May is drier and warmer, feeling like early spring in other regions.

#### Summer (June-August)

Highs: 60–65°F (16–18°C)  
Lows: 45–50°F (7–10°C)  
Overview: Mild temperatures with long daylight hours. June is often the driest month, but rain becomes more frequent in July and August.

## FLIGHTS

### Seat Selection & Frequent Flyer Points

We do not arrange seat selection. It is essential to highlight that some airlines do not allow pre-selected seats. We strongly suggest you contact the airline directly with seating allocation requirements and/or arrive at the airport earlier to arrange your seating. While we do not add frequent flyer member details to bookings, you can do this directly with the airline once you have your flight information.

### Passport Validity

Customers must provide valid passport details either at the time of purchase or no later than 45 days before the departure date. Failure to do so may result in the cancellation of the booking. Customers will be responsible for any costs and fees incurred in this instance.

## CRUISE

### Embarkation/Disembarkation

- Begins approximately 2 hours after docking.
- Due to security reasons, all guests must be on board 2 hours before sailing.

- Itineraries are subject to change at any time without notice.
- Check your specific sailing for exact departure and arrival times. All times are local to the port.

*Please note: Strict Covid-19 terms may also apply regarding proof of insurance covering Covid-19 and/or vaccination. Please refer to the cruise lines' terms and conditions for further information before boarding.*

## Cruise Loyalty Discounts

*Please note: Travellers must contact the cruise line directly upon receiving their travel documents in order to request any membership benefits they may be entitled to.*

## COACH TOUR

### Meals

For meals not included, the tour leader (when available) will offer assistance with reservations, suggestions and directions to local restaurants. It is your responsibility to notify us of any dietary requests/requirements.

*Please note: We will do our best to meet your requests/requirements; however, we cannot guarantee that we will always be able to.*

### Luggage

You will be responsible for all your personal belongings whilst on tour. You must carry your own luggage from the vehicle to the hotel room and back to the vehicle. The driver will assist with the uploading and unloading of bags from the vehicle.

## OTHER

### Mobility

If you require wheelchair access please contact our friendly sales and service team to inquire on your behalf.

### Weather

We always suggest referring to an online source for the most up-to-date weather information for your destination/s.

## Fitness Level Required



# Important Information

Adventure (and spontaneity) create some of the best travel memories. Bear in mind, your home schedules and timings might not be adhered to on tour - it's all part of the fun!

A relaxed level of fitness will be required. Expect a comfortable pace of touring with a focus on leisure time and gentle activity. This may include city tours, the ability to walk up and down small flights of stairs and gentle slopes. You will be responsible for your own luggage and have the ability to board all modes of transport without assistance.

*Please note:*

- *Some areas may be inaccessible to wheelchairs or mobility scooters, with personal walking sticks and other aids required should they be needed. Although some assistance may be available, every traveller should be self-reliant during all aspects of their travel.*
- *It is expected that every traveller must be self-reliant and able to undertake all aspects of their own travel. Please speak to your booking agent about your personal circumstances and any assistance requirements to ensure this tour is right for you.*
- *If you have any concerns, please consult your healthcare provider prior to purchase/travel.*

## Sightseeing

*Please note: If entry to a site is affected by changes in operating hours or public holiday closures, your itinerary, where possible, may be adjusted, or a similar activity will be offered in its place (subject to availability).*

## Shopping

Shopping overseas can be a daunting and confusing experience, especially when there is a language barrier. Please be very cautious when foreign currencies and prices are involved. If paying by credit card, please pay close attention to the amount you are being charged and keep all your receipts. Do not make any purchases you are not comfortable with or feel pressured into. If you are uncertain or need

assistance with the language barrier, please seek assistance from your Tour Guide/Leader. Please refer to our [Terms and Conditions](#) regarding shopping for further information.

## Visas

### United States

If travelling on an Australian Passport, an ESTA (Visa Waiver) for the USA is a strict requirement when travelling to or flying through the USA. Once a USA ESTA Visa Waiver is issued it is valid for 2 years or until your passport expires (whichever is sooner) and will allow multiple entries into the USA. For information on ESTA eligibility or to apply, please visit: <https://esta.cbp.dhs.gov/esta/>

*Please note: Due to recent changes in the USA Immigration policies, TripADeal recommends all travellers visit US Customs & Border Protection.*

### Canada (If you are transiting through Canada)

If transiting via Canada on the way to the USA, Australian and New Zealand passport holders must apply for an electronic travel authorisation (eTA) before travelling to Canada by air. An Electronic Travel Authorization (eTA) is an entry requirement for visa-exempt foreign nationals travelling to Canada by air. An eTA is electronically linked to a traveller's passport. It is valid for up to five years or until the passport expires, whichever comes first. If you get a new passport, you need to get a new eTA.

*Important:*

- *Please start arranging your visa three weeks before departure to account for any delays due to consulate operating hours.*
- *Visa rules are subject to change. Please check with the nearest embassy, consulate or immigration department of the destination/s you are visiting once you receive your travel documentation to ensure you have the most up to date information.*

- *It is your responsibility to be travel-ready and ensure that you are aware and comply with any destination or travel requirements, including the validity of all required travel documents.*
- *Passengers who are not Australian citizens must also check with the respective consulate or visa agency to determine what their visa requirements are and what personal identification is required.*
- *It is also important to note that some areas of employment, such as journalism, government authorities and charity organisations, may have additional restrictions in applying for visas. This may, in turn, affect the type of application required.*

## Travel Insurance

Embarking on your next trip is exciting, and while you hope the unexpected does not happen, it is best to be prepared. We strongly recommend you take out travel insurance when making your booking. Whether it's a potential medical emergency, a flight cancellation, a delayed suitcase, or an unforeseen event, it's important to ensure you're adequately protected. For more information or advice visit <https://www.tripadeal.com.au/travel-insurance>

## Schedule Of Fees

### Voluntary Changes

This includes booking changes requested by you, including but not limited to those changes requiring an airline ticket or a Purchase Confirmation reissue.

- Changes - \$100 per booking and any additional charges applied by the airline/cruise company/accommodation/other travel providers.

### Name Changes Due To Passenger Error

If the incorrect name has been provided, charges of \$100 per booking and any additional charges applied by the airline/cruise company/accommodation/other travel providers.

### Supplier Fees



# Important Information

In the event the tour package you have purchased is unable to proceed, and/or a Travel Supplier is unable to fulfil the tour due to external circumstances (Limitation of Liability e.g. a Force Majeure event), there may be a fee or amount of money that is withheld by our Suppliers and is unrecoverable. This may be due to non-refundable airline tickets, cancellation penalties with cruise cabins or unrecoverable payments with our land/accommodation partners. If refunds are not available from Suppliers, we will endeavour to obtain a travel credit on the best terms available and communicate these outcomes to you. In the event we are unable to obtain a refund or travel service credit, or part thereof, this cost is passed on to the customer as a Supplier Fee.