



# Ultimate Sri Lanka

KANDY ● NUWARA ELIYA ● COLOMBO ● JAFFNA

## The Offer

Get ready to explore the breathtaking jewel of Asia, Sri Lanka! From lush jungles to tranquil tea plantations and ancient temples shrouded in mystery, this island nation promises an experience that wildlife enthusiasts and history lovers will treasure forever.

Your journey begins in the vibrant town of Negombo where the lively Fish Market and centuries-old Negombo Fort set the stage for adventure. Get wild on an exhilarating half-day safari in Wilpattu National Park, home to majestic elephants, elusive leopards, sloth bears and more. Journey north to Jaffna, where the stunning Nallur Kandaswamy Kovil and the historic Jaffna Fort await your discovery. Admire the local flavours at Jaffna Market before heading to coastal Trincomalee, famous for its Portuguese Fort and the iconic Koneswaram Temple.

After a leisurely day in Nilaveli, step back in time to the UNESCO-listed Polonnaruwa ancient city. You'll then ascend the awe-inspiring Sigiriya Rock Fortress, climbing over 1,200 steps to soak in jaw-dropping views of the royal gardens below. Immerse yourself in the wonders of Kandy, from the world class brands at the Kandy City Centre shopping complex to the kaleidoscope of colours and

flavours at Kandy Market. Drive past the misty tea plantations, cascading waterfalls and colonial architecture surrounding Nuwara Eliya. You'll then board a scenic train to Ella, home to the enchanting Nine Arches Bridge and breathtaking Little Adam's Peak.

Discover the southern coast, known for its fisheries and cinnamon cultivation, where the cobbled streets of Galle Fort tell tales of bygone eras. Unwind on the golden sands of Kosgoda Beach, witness nature at its finest at a turtle hatchery, and learn about inspiring conservation efforts. Travel to cosmopolitan Colombo on a city tour that views the Floating Market and Independence Square before heading home.

Let adventure be your guide with return international full-service flights, 20 nights of hotel accommodation, daily breakfast, return airport transfers and more.

**Want more? Add extra days to your itinerary with Arrive Early and Stay Behind options in Colombo, Sri Lanka.**

Offer available for a limited time or until sold out. TRIP A DEAL PTY LTD: 50149240433

Updated: 15 May 2026 10:43:53

Have a question about this deal? We're here to help.  
Call our friendly team on 1300 158 912

1

FREQUENT  
FLYER

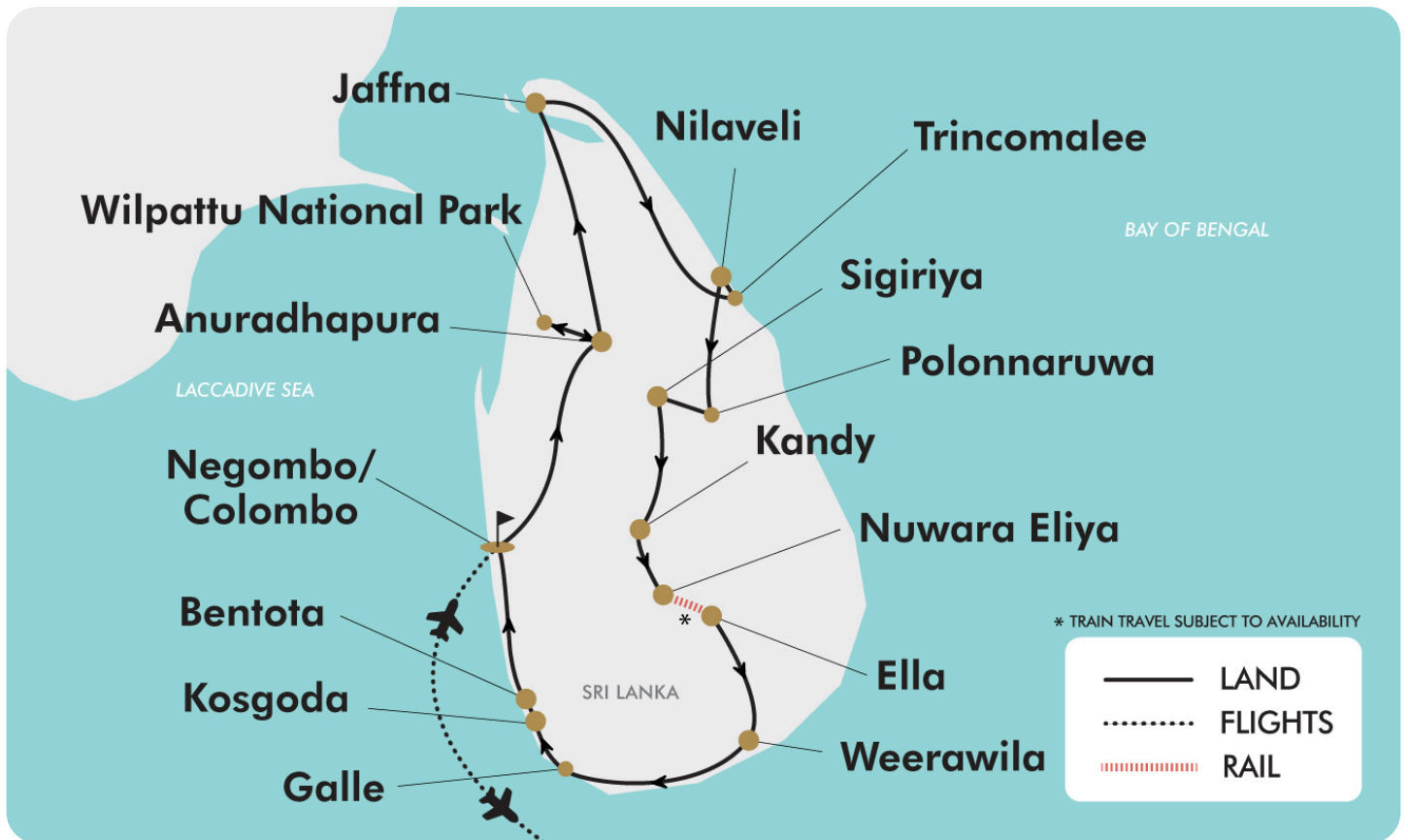


Trip  
aDeal



**22-DAY TOUR PACKAGE | ULTIMATE SRI LANKA**

**The Map**



Offer available for a limited time or until sold out. TRIP A DEAL PTY LTD: 50149240433

Updated: 15 May 2026 10:43:53

Have a question about this deal? We're here to help.  
Call our friendly team on 1300 158 912



## 22-DAY TOUR PACKAGE | ULTIMATE SRI LANKA

### The Itinerary

#### Day 1 Australia (or New Zealand) - Negombo, Sri Lanka

Today, you'll depart from Australia (or New Zealand) for Negombo (Colombo), Sri Lanka.

Upon arrival, you'll be greeted by a friendly representative who will assist with your transfer to Negombo. After checking into your hotel, the rest of the day is yours to relax and unwind. Whether you choose to explore the nearby beaches or simply enjoy the hotel's amenities, it's the perfect start to your Sri Lankan adventure.

**Overnight: Regenta Arie Lagoon or similar, Negombo**

**Meals included: In-Flight**

#### Day 2 Negombo – Anuradhapura

After breakfast, you'll embark on a fascinating city tour of Negombo.

Start your day by visiting the bustling Fish Market where you'll see a vibrant display of the freshest seafood. You might even capture the perfect photo of the traditional "oruwa" outrigger canoes that glide along the Negombo Lagoon. You'll then head to historical Negombo Fort, a relic from the colonial era that was built by the Portuguese in the 17th century and later fortified by the Dutch.

Following the tour, you'll journey to Anuradhapura where you'll check into your hotel. Enjoy the rest of the day at leisure, or feel free to take the day's optional activity.

Optional Activity: Explore Anuradhapura

Step back in time as you explore Anuradhapura, one of the world's oldest and greatest civilizations. This ancient city, ruled by 113 kings over a span of 1,300 years, was Sri Lanka's first

capital and remains a treasure trove of history and culture. At its heart lies the sacred Sri Maha Bodhi, a revered Bo tree sapling brought from India over 2,200 years ago (the very tree under which Lord Buddha attained enlightenment). Marvel at the towering Ruwanweliseya Stupa, gaze at the serene Samadhi Buddha Statue and visit the ancient Isurumuniya Rock Temple. Along the way, you'll witness the grandeur and spiritual significance of this ancient city that once reigned supreme in Sri Lanka's history. Please see current pricing in Important Information.

**Overnight: The Lake Forest or similar, Anuradhapura**

**Meals included: Breakfast**

#### Day 3 Wilpattu National Park Half-Day Safari

After breakfast, enjoy the morning at leisure. This afternoon, set off on an unforgettable adventure in Wilpattu National Park. Known for its natural beauty and incredible wildlife, you'll enjoy a half-day safari in the afternoon.

Wilpattu is a prime location to spot the elusive Sri Lankan leopard, one of the park's star attractions. The park is also home to a thriving population of elephants, sloth bears, spotted deer, water buffalo and more. Keep an eye (and ear) out for wild boar as sometimes their frantic squeals signal an intense chase, offering a rare opportunity to witness the drama of nature firsthand. It's a thrilling experience where every turn could reveal a new surprise!

After your safari, return to your hotel to unwind after an exciting afternoon in the wild.



## 22-DAY TOUR PACKAGE | ULTIMATE SRI LANKA

### The Itinerary

**Overnight: The Lake Forest or similar, Anuradhapura**  
**Meals included: Breakfast**

#### Day 4 Anuradhapura – Jaffna

After breakfast, you'll journey north to the culturally rich and historically significant city of Jaffna.

Upon arrival, check into your hotel and settle in for the evening. The rest of the day is at your leisure to relax or begin exploring this unique northern region of Sri Lanka at your own pace.

**Overnight: Jetwing Jaffna or similar, Jaffna**  
**Meals included: Breakfast**

#### Day 5 Jaffna City Tour

After breakfast, embark on a fascinating city tour of Jaffna, immersing yourself in the region's rich history and vibrant culture.

Visit the iconic Nallur Kandaswamy Kovil, one of the most important Hindu temples in the Jaffna Peninsula. Originally built in 948 and rebuilt over the centuries, this sacred site is a symbol of devotion with its annual festival attracting thousands of pilgrims from across the globe.

You'll then head to the historic Jaffna Fort, a colossal structure covering 22 acres and constructed from the unique black coral found in the region. Built by the Portuguese in 1619, it was later fortified by the Dutch and eventually came under British control. The fort is a testament to Sri Lanka's colonial past and offers a glimpse into the strategic importance of Jaffna through the centuries.

Conclude your tour with a stop at the bustling Jaffna Market where you can discover the local flavours and culinary delights of the region (charges may apply). From palmyrah flour to the pungent mor milagai (buttermilk chillies), the market is a treasure trove of hyper-local produce and handmade treats. Don't miss the sweetmeats, especially the laddoo-like mini-globes made from roasted gram flour, perfect for satisfying a sweet tooth!

After your tour, return to the hotel.

*Please note: As a Hindu custom, male visitors are kindly requested to enter Nallur Kandaswamy Kovil temple without a shirt.*

**Overnight: Jetwing Jaffna or similar, Jaffna**  
**Meals included: Breakfast**

#### Day 6 Jaffna Free Day

Today is yours to enjoy at your own pace, whether you choose to relax at the hotel or explore more of Jaffna's unique charm.

**Overnight: Jetwing Jaffna or similar, Jaffna**  
**Meals included: Breakfast**

#### Day 7 Jaffna – Trincomalee - Nilaveli

After breakfast, you'll depart for the coastal city of Trincomalee, famed for its natural deep-water harbour and historical significance. Upon arrival, check into your hotel and prepare for an afternoon of exploration.

Your city tour will introduce you to Trincomalee's fascinating blend of history and natural beauty. Begin at the impressive Portuguese Fort, a granite-built stronghold that stands as a reminder of the city's colonial past. Visit the iconic Koneswaram



## 22-DAY TOUR PACKAGE | ULTIMATE SRI LANKA

### The Itinerary

Temple, a classical Hindu temple with Dravidian architecture that offers stunning views of the ocean. Then visit the nearby Bhadrakali Amman Temple, dedicated to the goddess Kali.

#### Optional Activity: Pigeon Island Entry

Discover Pigeon Island at your own pace, a renowned marine sanctuary known for its vibrant coral reefs and resident rock pigeons. If you're looking for a peaceful moment, head to Marble Beach where the soft sands and tranquil waters provide the perfect setting to unwind. Please see current pricing in Important Information.

*Please note: This optional activity price is for entry to the island and there is no guided tour component.*

**Overnight: Nilaveli Beach Hotel or similar, Nilaveli**  
**Meals included: Breakfast**

#### **Day 8 Nilaveli Free Day**

After breakfast, enjoy a relaxing day at leisure in Nilaveli, a serene coastal village located just a short distance from the bustling city of Trincomalee. You can unwind by the peaceful beach, enjoy the hotel's facilities or take a short trip into Trincomalee to explore the nearby attractions (charges may apply). Whether you choose to relax by the water or venture out to discover more of this beautiful region, today is yours to enjoy at your own pace.

**Overnight: Nilaveli Beach Hotel or similar, Nilaveli**  
**Meals included: Breakfast**

#### **Day 9 Nilaveli – Polonnaruwa – Sigiriya**

After breakfast, you'll journey towards Sigiriya with an enriching stop en-route in the ancient city of Polonnaruwa.

Once the medieval capital of Sri Lanka and the crowning achievement of King Parakramabahu I, Polonnaruwa is a fascinating testament to the country's rich history and cultural heritage. As you wander through this World Heritage site, you'll encounter a captivating blend of ancient stupas, Buddha statues, intricately carved Hindu sculptures and impressive irrigation systems that showcase the brilliance of the past. Don't miss the beautiful stone carvings at the Watadage, a relic house that exudes a subtle Hindu influence, reflecting the fusion of religious beliefs in the region.

Take a moment to sit by the Gal Viharaya and admire the stunning Buddha statues, carved from solid rock. The Nissankamalla Council Chamber, with its gracefully swaying pillars, provides a glimpse into the grandeur of the kingdom while the nearby Parakrama Samudraya (Sea of Parakramabahu) stands as an extraordinary feat of ancient engineering.

After exploring Polonnaruwa, you'll check into your hotel in Sigiriya where you can enjoy the evening free to relax.

**Overnight: Hotel Sigiriya or similar, Sigiriya**  
**Meals included: Breakfast**

#### **Day 10 Sigiriya Rock Fortress**

After breakfast, you'll embark on a captivating excursion to the Sigiriya Rock Fortress, one of Sri Lanka's most iconic landmarks and a UNESCO World Heritage site.

Sigiriya Rock Fortress, built by King Kasyapa, is not only a marvel of ancient Sri Lankan engineering but also a stunning testament to the country's art and culture. As you climb to the top, you'll pass through the giant 'Lion's Paws' which is an awe-inspiring



## 22-DAY TOUR PACKAGE | ULTIMATE SRI LANKA

### The Itinerary

entrance that once led to the royal citadel. From here, take in the breathtaking views of the surrounding royal gardens which are laid out in perfect symmetry.

The fortress is surrounded by ramparts and moats with the rock itself resembling the mythological 'City of Gods'. Explore the frescoes that decorate the rock's walls, similar in style to the ancient Gupta paintings of India's Ajanta Caves, and walk along the 'Mirror Wall' that provides a fascinating glimpse into the past.

Finish your exploration at the museum where you can learn about the ingenious hydraulic systems and advanced urban planning that made Sigiriya one of the most impressive and self-sufficient citadels in ancient Asia. The remarkable engineering feats, including water gardens and ponds, once supplied water all the way to the summit of the fortress.

Afterwards, you'll return to your hotel for the afternoon at leisure, or you can take an optional afternoon safari ride through the nearby Minneriya National Park.

#### Optional Activity: Minneriya National Park Afternoon Safari

For those seeking an unforgettable wildlife experience, take an optional excursion to Minneriya National Park, located just a short distance from Sigiriya. Spanning 8,800 hectares, this sanctuary is renowned for its large herds of elephants, often seen gathering along the banks of the Minneriya Reservoir. These gatherings, often exceeding 300 elephants, are one of the largest of its kind in the world. This earns Minneriya its reputation as a must-see destination for wildlife enthusiasts. Please see current pricing in Important Information.

**Overnight: Hotel Sigiriya or similar, Sigiriya**  
**Meals included: Breakfast**

#### **Day 11 Sigiriya – Kandy**

After breakfast, you'll head to Kandy, the cultural capital of Sri Lanka. Upon arrival, check in to your hotel and take a moment to relax.

In the afternoon, you'll enjoy a city tour of charming Kandy. Visit the Kandy City Centre, a modern shopping hub offering world-class brands, a bustling bazaar, an arts and crafts centre, and a fascinating gem museum and lapidary (entry fees may apply).

You can then immerse yourself in the vibrant atmosphere of Kandy Market where the vivid colours of fresh fruits and vegetables line the streets, giving you a true feeling for local life. As the day winds down, enjoy the rhythm of traditional Kandyan drumming as part of a cultural show, celebrating the rich and vibrant traditions of Sri Lanka.

#### Optional Activity: Temple of the Sacred Tooth Relic

Temple of the Sacred Tooth Relic is home to one of the most sacred relics in Buddhism, the tooth of Lord Buddha. As you explore this magnificent site, you'll witness the deep reverence and traditions that surround the temple which has been an important pilgrimage destination for centuries. The temple itself is a stunning example of Kandyan architecture with beautifully decorated halls, intricate carvings and serene surroundings. Please see current pricing in Important Information.

**Overnight: Cinnamon Citadel or similar, Kandy**  
**Meals included: Breakfast**



## 22-DAY TOUR PACKAGE | ULTIMATE SRI LANKA

### The Itinerary

#### Day 12 Kandy - Nuwara Eliya

After breakfast, you'll proceed to Nuwara Eliya, a scenic hill station renowned for its cool climate and lush landscapes. Upon arrival, check in to your hotel and take a moment to relax.

In the afternoon, enjoy a tour of charming Nuwara Eliya which still carries the legacy of its British colonial past. As you drive along the misty roads, you'll be surrounded by vast green expanses of tea plantations, waterfalls cascading down the hillsides and traditional colonial-style bungalows that give the town its unique atmosphere. Keep an eye out for vibrant tea pickers in colourful saris and enjoy the breathtaking scenery of the hill country. Visit the iconic Lake Gregory where you can rent a bike (not included) for a relaxed ride along the water's edge or simply enjoy a peaceful stroll in the tranquil surroundings.

After the tour, return to your hotel to relax for the rest of the day. For golf enthusiasts, the Nuwara Eliya Golf Course is one of Sri Lanka's finest 18-hole courses and an excellent place to enjoy a round of golf while soaking in the beautiful mountain backdrop (charges apply).

#### Optional Activity: High Tea at Jetwing St Andrews Hotel

For a truly elegant experience, indulge in an optional high tea at the Jetwing St Andrews Hotel in Nuwara Eliya. Set in a charming colonial-era building, this historic hotel offers a quintessentially British afternoon tea experience, complete with a

selection of fine teas, freshly baked scones, sandwiches and delicate pastries. Enjoy the peaceful atmosphere, enhanced by the cool mountain air and views of the picturesque surroundings, as you savour this classic treat. Please see current pricing in Important Information.

**Overnight: The Hill Club or similar, Nuwara Eliya**

**Meals included: Breakfast**

#### Day 13 Nuwara Eliya Free Day

After breakfast, enjoy a day at leisure to relax and explore Nuwara Eliya on your own. Alternatively, you can opt for a Horton Plains National Park excursion.

#### Optional Activity: Horton Plains National Park

Venture into the stunning Horton Plains National Park, a UNESCO World Heritage site that's paradise for trekkers and nature lovers. Situated at an altitude of over 2,100 metres, the park is a breathtaking expanse of green pastures and montane evergreen forests, home to rare flora and fauna. Begin your 9-kilometre trek across the plateau where the cool breeze and frost-covered grasslands offer a refreshing escape. As you trek, you'll encounter the thundering Bakers Falls and experience the exhilarating World's End, a dramatic 1,100 metre drop that offers panoramic views of the Southern plains. Keep an eye out for wildlife including herds of sambar deer, wild boar, fishing cats and even the elusive Sri Lankan Leopard. Please see current pricing in Important Information.

**Overnight: The Hill Club or similar, Nuwara Eliya**

**Meals included: Breakfast**



## 22-DAY TOUR PACKAGE | ULTIMATE SRI LANKA

### The Itinerary

#### Day 14 Nuwara Eliya Train Ride - Ella & Nine Arches Bridge

After an early breakfast, you'll check out of the hotel and head to Nanu Oya Railway Station to board your scenic train ride to Ella. The tour vehicle will drop you at the station in time for your departure and your main luggage will be transported separately by the vehicle. This train journey offers an unparalleled view of the hill country, taking you through lush tea plantations, misty landscapes and picturesque villages. The ride gives you a unique glimpse into both the culture and beauty of Sri Lanka's mountainous heart.

Upon arrival in Ella, hop on your vehicle and proceed to the hotel for check-in. Later in the afternoon, head out to explore the Nine Arches Bridge and Little Adam's Peak.

The Nine Arches Bridge, also known as the "Bridge in the Sky", is a stunning colonial-era viaduct and one of Sri Lanka's most impressive railway structures. Located in Demodara, the bridge is surrounded by lush greenery and steep hillsides, making it a popular spot for photos and sightseeing. Your guide will share the history of this remarkable bridge and its significance in Sri Lanka's railway history.

Little Adam's Peak offers a more moderate trek compared to the famous Adam's Peak. The mountain, named after its larger counterpart, is shaped similarly and provides breathtaking views of the surrounding valleys and tea plantations. Though not as high as Adam's Peak, Little Adam's Peak still offers a rewarding hike and panoramic views, making it a perfect spot for nature lovers and adventurers alike. Afterwards, you'll return to your hotel in Ella for an evening at leisure.

*Please note: Train tickets are strictly subject to availability and will be confirmed on tour. If tickets are unavailable, you will instead travel by road to Ella.*

**Overnight: EKHO Ella or similar, Ella**

**Meals included: Breakfast**

#### Day 15 Ella - Weerawila

After breakfast, you'll check out of the hotel and journey to Weerawila, located in the southern part of Sri Lanka. The journey will take you through picturesque landscapes, providing a scenic drive that captures the essence of the island's natural beauty.

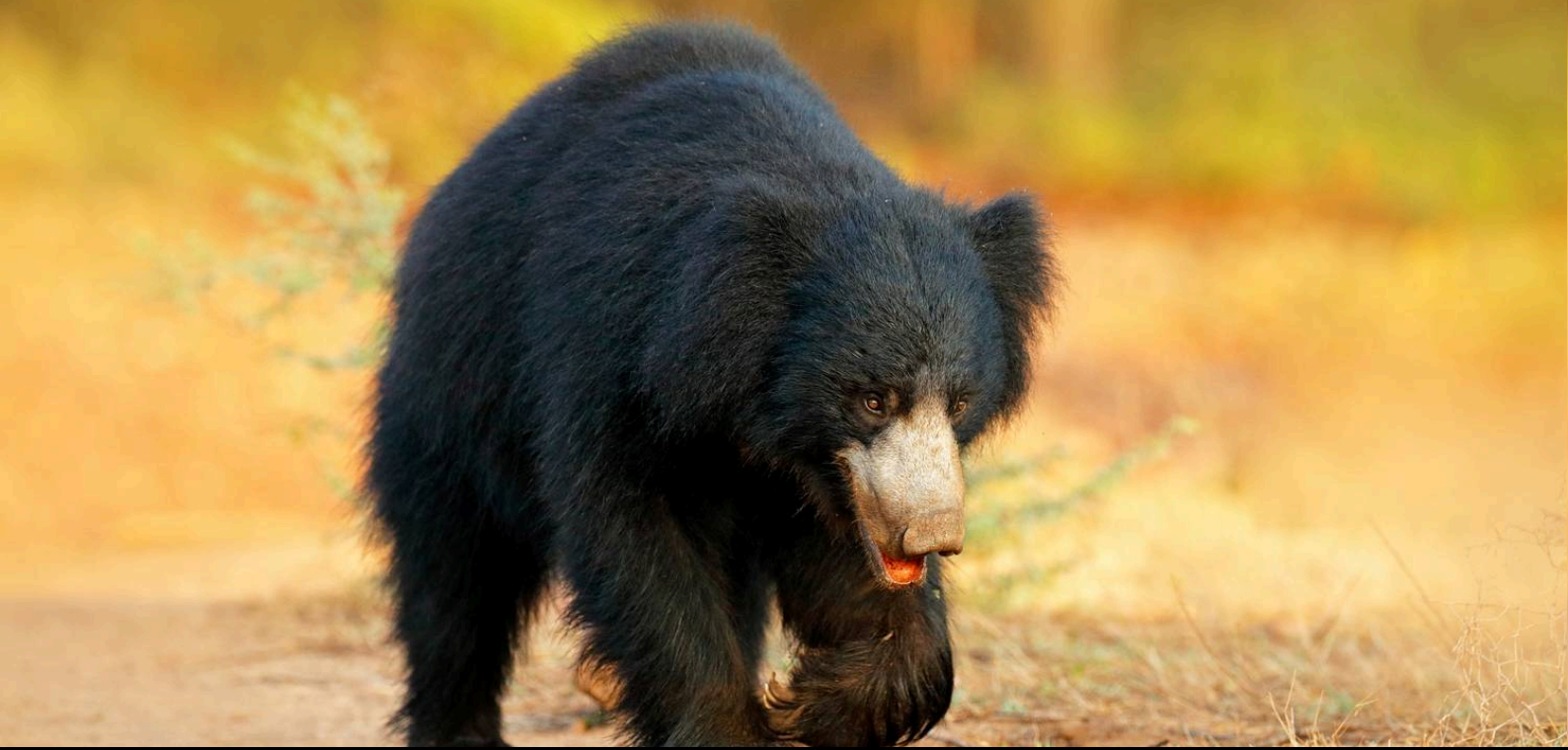
Upon arrival in Weerawila, you'll check in to your hotel where you can enjoy the remainder of the day at leisure or take an optional safari through Yala National Park.

Optional Activity: Yala National Park

Spanning 979 square kilometres, Yala National Park is renowned as the heart of Sri Lanka's wildlife. It offers a spectacular safari experience through its vast grasslands, scrublands, tanks and dunes. Keep an eye out for an impressive array of wildlife including herds of elephants, sloth bears, spotted deer, jackals and a wide variety of bird species. Yala is famous for housing one of the highest density of leopards in the world, making it one of the premier destinations for wildlife enthusiasts. The bumpy, rugged tracks of the park will add to the thrill of your journey as you venture deep into the wilderness, all while listening to the calls of the animals and taking in the stunning natural beauty around you. Please see current pricing in Important Information.

**Overnight: DoubleTree by Hilton or similar, Weerawila**

**Meals included: Breakfast**



## 22-DAY TOUR PACKAGE | ULTIMATE SRI LANKA

### The Itinerary

#### Day 16 Weerawila – Galle - Kosgoda

After breakfast, check out of your hotel and travel to Galle, located on the southern coast of Sri Lanka.

Galle is a striking blend of Dutch colonial architecture set against the backdrop of a tropical paradise so you'll enjoy a city tour of this historic city. Stroll through the cobbled streets of the Galle Fort where the historic ramparts and bastions have been preserved for over 350 years. The original Dutch ramparts are a remarkable testament to the city's colonial past with the old gate adorned with the British coat of arms.

Flanking the old gate is the Zwart Bastion and the towering lighthouse, standing proudly at over 5 metres tall. The streets of the fort are laid out in a rectangular grid, lined with colonial-style houses and verandas, giving the area a distinct European charm. You'll also visit the Dutch Hospital Shopping Complex where you can browse a variety of souvenirs and local goods.

After the tour, you'll head to Kosgoda to settle into your accommodation for the night.

**Overnight: Sheraton Kosgoda Turtle Beach Resort or similar, Kosgoda**

**Meals included: Breakfast**

#### Day 17 Kosgoda Beach Free Day

After breakfast, you can enjoy a relaxing day at leisure on Kosgoda Beach. Spend the day unwinding on the golden sands, taking a refreshing swim in the calm waters or simply relaxing under the tropical sun. Alternatively, there are 2 optional tours that can both be taken today.

Optional Activity: Cooking Class at Sonja's Restaurant

Experience the authentic flavours of Sri Lankan cuisine by participating in a cooking class at Sonja's Restaurant. During the class, you will help prepare 5 to 6 traditional Sri Lankan dishes. The chef will guide you through the Galle Market to pick up fresh ingredients needed. You will then learn about the key spices and techniques used in Sri Lankan cooking as you work together to create a delicious feast. At the end of the class, relax and enjoy the mouth-watering dishes you've just prepared. The cooking class runs from 10:00 to 13:00. This includes shopping time at the Galle Dutch Market, meal preparation and enjoying the meal you've cooked. Please see current pricing in Important Information.

#### Optional Activity: Madu River Boat Ride

Embark on a tranquil boat ride along Madu River, one of Sri Lanka's most scenic waterways. Originating near Uragasmanhandiya, the river widens into the Madu Ganga Lake and eventually flows into the Indian Ocean. Madu Ganga, along with the nearby Randonbe Lake, forms a unique wetland ecosystem that's rich in biodiversity. The river's mangrove islets are home to around 303 plant species and 248 species of vertebrate animals. Along the way, look out for local inhabitants producing peeled cinnamon and cinnamon oil, a specialty of the region. Please see current pricing in Important Information.

**Overnight: Sheraton Kosgoda Turtle Beach Resort, or similar, Kosgoda**

**Meals included: Breakfast**



## 22-DAY TOUR PACKAGE | ULTIMATE SRI LANKA

### The Itinerary

#### Day 18 Kosgoda Turtle Hatchery - Bentota

After breakfast, you'll head out in the morning to visit a turtle hatchery. Here, both local and international volunteers working tirelessly for the protection of sea turtles.

This peaceful coastal destination, located along Sri Lanka's Southern coast, has long been known for its fisheries and cinnamon cultivation. However, it gained recognition when the Wildlife Protection Society established a Sea Turtle Conservation Project here. It has grown to an impressive scale and today, is a hub for turtle conservation efforts, attracting those passionate about these magnificent creatures.

Afterwards, you'll proceed to Bentota where you can check-in at the hotel and enjoy time to relax.

**Overnight: NH Bentota Ceysands or similar, Bentota**  
**Meals included: Breakfast**

#### Day 19 Bentota Free Day

After breakfast, you can enjoy a relaxing day at the beach in Bentota or join an optional activity for the day.

Optional Activity: Lunuganga Estate

Lunuganga Estate, the former country home of the renowned Sri Lankan architect Geoffrey Bawa, is a testament to his architectural genius. The estate, which began as a garden project in 1947, was the inspiration that led Bawa to shift from law to architecture after being called to the Bar at the Inner Temple in 1940. Over the years, Bawa, considered one of Asia's most influential architects, used the estate as his personal experimental space, continually reshaping its gardens, buildings and overall design. He continued to transform the estate until his

final illness in 1998. After his passing in 2003, Lunuganga was left to the Lunuganga Trust. Today, the estate's stunning gardens and buildings are open to the public with the structures on the property now serving as a country house hotel. Please see current pricing in Important Information.

**Overnight: NH Bentota Ceysands, or similar, Bentota**  
**Meals included: Breakfast**

#### Day 20 Bentota - Colombo

After breakfast, you'll head to the bustling metropolis Colombo.

Enjoy an exciting afternoon city tour, beginning by driving by the historic Race Course which was originally built in 1893. Today, the area is home to high-end clothing, food and tea boutiques but it was once used as a World War II airstrip. You'll then drive by the Floating Market, an offbeat shopping experience that captures the essence of local culture. Pass by Colombo Port City, an ambitious offshore development project that is set to feature parks, commercial complexes and even an F1 track.

You'll then continue along Baudhaloka Mawatha, leading to the iconic Independence Square, a revitalised colonial-era landmark surrounded by designer boutiques, fine dining establishments and unique attractions like a walk-over fish tank, making this area one of the trendiest shopping and leisure zones in Sri Lanka.

There are also 2 optional activities that can both be taken today.

Optional Activity: Colombo Museum

Delve deeper into Sri Lanka's rich cultural heritage by visiting the Colombo Museum (also known as the National Museum of Colombo) which offers a fascinating insight into the country's history. The museum, which was established in 1877, houses an



## 22-DAY TOUR PACKAGE | ULTIMATE SRI LANKA

### The Itinerary

extensive collection of artefacts ranging from ancient sculptures and paintings to manuscripts, royal regalia and religious artefacts. Encounter exhibits detailing Sri Lanka's ancient kingdoms, colonial past and the cultural evolution of the island. The museum's peaceful surroundings in the heart of Colombo provide a quiet escape from the city's hustle and bustle, making it an excellent option for history and culture enthusiasts. Please see current pricing in Important Information.

#### Optional Activity: Gangaramaya Temple

Explore Sri Lanka's spiritual heritage by visiting Gangaramaya Temple. Located in the heart of Colombo, this vibrant Buddhist temple is a blend of modern architecture and traditional Sri Lankan design. Established in the late 19th century, it serves not only as a place of worship but also as a centre for learning. The temple complex includes a museum with a unique collection of Buddhist artefacts, ivory and ancient religious texts (entry fees apply). Stroll around the tranquil temple grounds which feature a beautiful lake and a variety of statues and shrines. Please see current pricing in Important Information.

**Overnight: Hilton Hotel or similar, Colombo**  
**Meals included: Breakfast**

#### **Day 21 Colombo, Sri Lanka - Australia (or New Zealand)**

Today, at the appropriate time, you will be transferred to the airport for your flight back home.

**Meals included: Breakfast; In-Flight**

#### **Day 22 Arrive Australia (or New Zealand)**

Offer available for a limited time or until sold out. TRIP A DEAL PTY LTD: 50149240433

Updated: 15 May 2026 10:43:53

Have a question about this deal? We're here to help.  
Call our friendly team on 1300 158 912

11

FREQUENT  
FLYER 





## 22-DAY TOUR PACKAGE | ULTIMATE SRI LANKA

### Tour Inclusions

#### HIGHLIGHTS

Explore what Sri Lanka has to offer on an exciting group tour

Climb the formidable Sigiriya Rock Fortress

Step back in time as you uncover the UNESCO-listed city of Polonnaruwa

Discover the vibrant coastal city of Jaffna

Feel the thrill of a safari ride through Wilpattu National Park

Visit the Kandy Market and Kandy City Centre in the charming city of Kandy

Embark on a breathtaking journey to Ella then see the renown Nine Arch Bridge

Experience the colonial charm of Nuwara Eliya, surrounded by tea plantations

Tour the famed coastal city of Trincomalee, known for its beaches

Wander the streets of Galle, home to the UNESCO-listed Galle Fort

Discover bustling Colombo on an exciting city tour

Witness the conservation efforts at the Kosgoda Turtle Hatchery

Relax on the sun-drenched shores of Bentota Beach, ideal for swimming and sunbathing

#### FLIGHTS

Return international full-service flights (economy class), surcharges may apply

#### ACCOMMODATION

20 nights of 3 to 5-star hotel accommodation

#### DINING

Enjoy daily breakfast

#### ESSENTIALS

English-speaking tour guides

Airline taxes and surcharges

#### TRANSPORT

Transportation by private air-conditioned vehicles

#### TRANSFERS

Return airport transfers

Offer available for a limited time or until sold out. TRIP A DEAL PTY LTD: 50149240433

Updated: 15 May 2026 10:43:53

Have a question about this deal? We're here to help.  
Call our friendly team on 1300 158 912

12

FREQUENT  
FLYER



Trip  
aDeal

# Important Information

*\*Please note: All information provided in this brochure is subject to both change and availability. Prior to purchase please check the current deal for up-to-date information. If you have already purchased this deal, the terms and conditions on your Purchase Confirmation apply and take precedence over the information in this brochure.*

## Booking Information

After purchase, you will receive a receipt and a Purchase Confirmation, directing you to an online Passenger Information Form. You must complete the Passenger Information Form within 72 hours of purchase.

Any special requests, preferences and optional extras MUST be clearly stated in your Passenger Information Form. Any change requested after submitting your Passenger Information Form cannot be guaranteed, is strictly subject to availability and will incur surcharges as outlined in the Schedule of Fees below.

*Please note: All countries and territories have different entry requirements in relation to vaccinations, quarantine/isolation periods and travel restrictions. Due to the evolving nature, we would ask all of our customers to monitor, meet and adhere to the specific requirements of their intended destination(s) in the lead-up to and immediately before travel, as well as any requirements post-travel upon their return.*

## Our Policies

### Cancellation & Refund Policy

By placing a booking with us, you acknowledge the following important information:

- **we act as your booking agent ;**

TripADeal is a booking services provider, and curates the Travel Offers available on our website. We act as your booking agent, and we receive payment for the Booking Services as part of the booking price, however, we do not provide any of the Travel Services (flights, accommodation, tours or other products or services) included in your booking – the Travel Services are provided by a number of third party Travel Suppliers.

- **each booking is unique ;** our Travel Offers are made up of a variety of different components and are, during the booking process, uniquely tailored to suit your requirements, for example, departure dates and ports, flight and room upgrades, tour inclusions, etc.

- **changes/modifications to your booking may not be possible ;** once your booking has been made, changes or modifications may not be possible, and where possible, may incur a fee. It is important to ensure that the information you provide during the booking process is accurate and up to date, and that you read the Travel Offer carefully before placing your order.

- **Travel Offers are a package ;** our Travel Offers have been curated into package offerings and must be used as a package – individual components cannot be used independently of the full package offering.

- **our Travel Offers are generally non-refundable ;** in order to provide great value Travel Offers, we work with a variety of Travel Suppliers to find the best deals – this often means the Travel Suppliers' offerings are non-refundable to ensure the best price. We recommend that you obtain travel insurance as soon as you make a booking with us. If your plans change, you can receive a full refund (excluding credit card fees) if you cancel at least 12 months in advance to your scheduled departure date.

To read more about our Cancellation and Refund Policy, please [click here](#).

### General Terms & Conditions

By placing your booking with us, you acknowledge and agree to our [Terms and Conditions](#), [Privacy Policy](#) and [Cancellation Policy](#).

## Offer Essentials

This Travel Offer is valid for travel on selected dates until the 16th of December 2026.

Minimum group size 14, maximum group size 30 per vehicle.

This Travel Offer is priced per person

based on a twin share.

### Departure Dates & Surcharges

See checkout for live dates and availability.

### Single Traveller Supplement

For solo travellers, a mandatory single supplement of \$2,000 applies.

*Please note: Accommodation for single customers who are travelling on a tour or cruise package may be in a single room, depending on availability.*

### Child Policy

- No child discounts. The full price applies to all children travelling with their parents.
- Valid for children 8 years old and over.

*Please note: Children must be accompanied by a responsible adult 18 years old and over to travel. No unaccompanied minors are allowed.*

## Flights

### Departure Cities

Sydney, Melbourne, \*Brisbane, \*Adelaide, Perth and \*Auckland

### Departure City Surcharges

- Brisbane: \$300 per person
- Adelaide: \$300 per person
- Auckland: \$700 per person

### International Flight(s)

- Cabin Class: Economy Class

*Please note: We cannot accommodate one-way flights. Travellers must take all included flights within the package, and any flights intentionally forfeited will result in later flights being subject to cancellation.*

*Please note: From Sydney, Melbourne or Brisbane, the flying journey to your destination may take up to 19 hours, with up to 1 stop.*

From Adelaide, the flying journey to your destination may take up to 19 hours, with up to 2 stops. One of those stops may be within Australia.

From Perth, the flying journey to your destination may take up to 16 hours, with

# Important Information

up to 1 stop.

From Auckland, the flying journey to your destination may take up to 23 hours, with up to 2 stops. One of those stops may be within Australia.

This is provided as a guide only - actual flight duration can vary depending on availability and airline schedules. Your booking's final details will be confirmed to you via email once available.

## Preferred Airline Surcharge

Not Available.

## Arrive Early & Stay Behind Options

Fly out and return home up to 60 days pre and post your tour dates.

### Arrive Early

Colombo, Sri Lanka - From \$300 per person, subject to availability.

### Stay Behind

Colombo, Sri Lanka - From \$300 per person, subject to availability.

*Please note:*

#### • Exclusions:

*This fee does not include extra nights' accommodation, meals or airport transfers.*

#### • Cancellations & Changes:

*Flight booking changes or cancellations after air tickets have been issued are not guaranteed and may incur additional fees and fare difference, subject to the airline cancellation and change policies. Flight changes are subject to availability at the time of booking.*

#### • High-Season:

*A high-season Arrive Early or Stay Behind can be purchased for an additional charge, subject to availability. For pricing, please refer to the cart.*

#### • + 60 Days:

*You can fly out up to 60 days before your package's start date, and/or return home 60 days after your package's end date. Should you wish to fly out or return home for more than 60 days from the tour, please contact us to request availability. Additional costs may apply.*

#### • Estimated Dates:

*Your estimated departure, return, and arrival dates are all subject to availability and may vary. The confirmed schedule for all flights will be provided when you receive your flight tickets.*

#### • High season surcharges apply to flights departing between the below date ranges:

15th September 2025 - 12th October 2025

1st December 2025 - 19th December 2025

20th December 2025 - 4th January 2026

5th January 2026 - 31st January 2026

3rd April 2026 - 20th April 2026

26th June 2026 - 17th July 2026

18th September 2026 - 9th October 2026

12th December 2026 - 18th December 2026

19th December 2026 - 3rd January 2027

4th January 2027 - 26th January 2027

## Stopover Packages

#### • Kuala Lumpur

Includes:

- 2, 3 or 5 nights in 4-star accommodation
- Daily breakfast
- Return airport transfers

For pricing, please refer to the payment cart at checkout.

*Please note:*

- *When a pre and post-tour stopover is chosen, the same stopover location must be chosen each way, due to the airline used.*
- *When selecting to Arrive Early for your tour in conjunction with a Stopover Package, your fly out date from home will take place before the stopover.*
- *When selecting to Stay Behind after your tour in conjunction with a Stopover Package, your stopover will take place before your final flight home.*

• *Stopover packages are subject to availability.*

• *In the event that a purchased stopover package and a purchased preferred airline upgrade are not compatible, you will have the option to receive a refund for the preferred airline upgrade or be offered an alternative stopover city option, e.g if you choose to fly with Singapore Airlines you cannot stopover in Dubai.*

• *Blackout dates apply to flights departing between the below date ranges:*

2nd October 2025 - 8th October 2025  
22nd December 2025 - 2nd January 2026  
1st October 2026 - 9th October 2026  
18th December 2026 - 3rd January 2027

## Flight Class Upgrades

Business Class: For pricing, please refer to the payment cart at checkout.

*Please note:*

- *Flight upgrades are subject to availability and pricing changes (if we cannot fulfil your request, the upgrade cost will be refunded).*
- *On any upgrade purchase, short-haul flights and domestic flight sectors are not guaranteed, subject to aircraft configuration.*

## Missed Flights

If you fail to arrive for your outbound flight, you risk all flight and land arrangements in your destination being automatically cancelled by the airlines and land operator, respectively. Additional fees may apply to reinstate these services. If you miss your flight for whatever reason, please contact us as soon as possible to make arrangements.

## Accommodation

### Accommodation Used

3, 4 & 5-Star Properties (Self-Rated)

- Negombo: Regenta Arie Lagoon or similar
- Anuradhapura: The Lake Forest Hotel or similar
- Jaffna: Jetwing Jaffna or similar
- Nilaveli: Nilaveli Beach Hotel or similar
- Sigiriya: Hotel Sigiriya or similar

# Important Information

- Kandy: Cinnamon Citadel or similar
- Nuwara Eliya: The Hill Club or similar
- Ella: EKHO Ella or similar
- Weerawila: DoubleTree by Hilton or similar
- Kosgoda: Sheraton Kosgoda Turtle Beach Resort or similar
- Bentota: NH Bentota Ceysands or similar
- Colombo: Hilton Hotel or similar

*Please note: Accommodation/rooms offered are based on a lead-in room type and are subject to availability based on seasonality. In the instance a property is not available, a similar standard of accommodation will be provided. Properties will be confirmed and included in your travel pack, which you will receive 4-6 weeks before travel.*

## Extra Nights

Not available.

*Please note: If you are interested in booking additional nights of accommodation pre or post-tour, please wait until you receive your travel documentation approximately 4-6 weeks before departure for the confirmed list of hotels. If booking your own additional accommodation directly with the hotel, please be aware that you may be required to change rooms at the start/end of your tour.*

## Maximum Room Capacity

2 people.

## Triple Share

Not available.

## Bedding Configuration

Twin or double (subject to availability).

## Optional Tours/activities

- Day 2: Explore Anuradhapura - \$85 per person
- Day 7: Pigeon Island - \$85 per person
- Day 10: Minneriya National Park Half Day Safari - \$125 per person
- Day 11: Kandy Temple - \$30 per person
- Day 12: High Tea in Nuwara Eliya - \$50 per person
- Day 13: Horton Plains National Park - \$130 per person

- Day 15: Yala National Park Half Day Safari - \$130 per person
- Day 17: Cooking class in Galle - \$85 per person
- Day 17: Balapitiya Boat ride at Madu River - \$65 per person
- Day 19: Lunuganga Estate - \$55 per person
- Day 20: Colombo Museum - \$15 per person
- Day 20: Gangaramaya Temple - \$10 per person

*Please note:*

- *The optional tours listed above must be purchased on checkout or over the phone before submitting your passenger information form (subject to availability).*
- *Some tours require minimum numbers to operate.*

## Exclusions

- Visa fees and requirements
- Domestic transfers and flights not stated in the deal offer
- Meals/beverages not stated in the deal offer
- Optional gratuities/tipping
- Optional activities/tours
- Personal expenses
- Travel insurance
- Any costs associated with an interruption to your tour as a result of an airline schedule change or cancellation
- Mandatory city tax

## Gratuities/tipping

### Land

Gratuities (tips) are not included for the services of the tour leader (when available) and driver throughout the tour. The recommended tip is 2000 LKR per person per day. This covers the guide/leader and the driver and will be collected on tour. In addition to the recommended gratuities for your dedicated tour leader and driver, a voluntary 'group kitty' may be introduced at the commencement of your tour. This optional contribution, not exceeding \$25 AUD per person for the entire trip, helps cover smaller, shared tips along the journey for local services such as bellboys,

shoe minders, and safari drivers. This streamlines tipping and ensures fair recognition for those who enhance your experience.

*Please note: tipping for services provided is always a matter of personal discretion; however, please be aware that many locals consider tipping part of their normal remuneration, and they may approach you for payment; there's no need to be intimidated by the request.*

## Other Important Information

### TOUR GUIDE VS. TOUR LEADER

#### Tour Guide

Often locals with intimate knowledge of an area, its culture, and history. Their role entails providing commentary, routing the tour, and seeing that people have a good time. They are a licensed, qualified expert who supplies specific information on the history, art, architecture and culture of the city/village/attraction where they are guiding the tour. The guide meets the group at the required place and leaves it at the end of the tour; they do not travel with the group.

#### Tour Leader

An experienced person tasked with ensuring the smooth operation of tours, as well as providing practical support to passengers throughout the whole trip. Their role primarily includes assisting with accommodation, transportation between locations, and communication with tour guides at each stop. A tour leader may provide general guidance around a city or village and offer information on the place visited on the bus. However, they are not required to have specific art, architecture, or historical knowledge. They are not allowed to provide a guided tour or commentary of a city/village/attraction once there and, if caught doing so, can be fined.

*Please note: Tour leaders/guides are not a standard inclusion in all travel offers. Tour leaders/guides will only be made available when required to enhance the experience of the destination featured.*

# Important Information

## CLIMATE & AVERAGE TEMPERATURES

Sri Lanka is a year-round destination with two monsoon seasons so there is a lot of confusion about the best time to visit. The weather doesn't run like clockwork here! However, there will rarely be weather so dramatic that it will stand in the way of a brilliant holiday with plenty of warm weather and sunshine. The temperature is constant at around 27°C on the coast, both in the air and the water!

## FLIGHTS

### Seat Selection & Frequent Flyer Points

We do not arrange seat selection. It is essential to highlight that some airlines do not allow pre-selected seats. We strongly suggest you contact the airline directly with seating allocation requirements and/or arrive at the airport earlier to arrange your seating. While we do not add frequent flyer member details to bookings, you can do this directly with the airline once you have your flight information.

### Passport Validity

Customers must provide valid passport details either at the time of purchase or no later than 45 days before the departure date. Failure to do so may result in the cancellation of the booking. Customers will be responsible for any costs and fees incurred in this instance.

## COACH TOUR

### Meals

For meals not included, the tour leader (when available) will offer assistance with reservations, suggestions and directions to local restaurants. It is your responsibility to notify us of any dietary requests/requirements.

*Please note: We will do our best to meet your requests/requirements; however, we cannot guarantee that we will always be able to.*

### Luggage

You will be responsible for all your personal belongings whilst on tour. You must carry your own luggage from the

vehicle to the hotel room and back to the vehicle. The driver will assist with the uploading and unloading of bags from the vehicle.

## OTHER

### Mobility

If you require wheelchair access please contact our friendly sales and service team to inquire on your behalf.

### Fitness Level Required

A Moderate level of fitness will be required. Expect a moderate pace of touring with a focus on guided tours that may include full days with extended activity, guided city tours or nature walks. You will require a general level of fitness for unassisted navigation of stairs and inclines, longer distances with possible periods of standing when visiting sites, walking on sloping, uneven ground or elevations. You will be responsible for your own luggage and have the ability to board all modes of transport without assistance.

#### *Please note:*

- *Many areas may be inaccessible to wheelchairs or mobility scooters, where the unassisted use of personal walking sticks and other aids may be required. Although some assistance may be available, every traveller should be self-reliant during all aspects of their travel.*
- *It is expected that every traveller must be self-reliant and able to undertake all aspects of their own travel. Please speak to your booking agent about your personal circumstances and any assistance requirements to ensure this tour is right for you.*
- *If you have any concerns, please consult your healthcare provider prior to purchase/travel.*

### Yellow Fever

A valid international certificate of vaccination against Yellow Fever is required in many countries. You may need to present this on arrival at the airport or border crossing. Some countries will refuse entry if you are unable to present your

certificate. It's also common for your home country to request a Yellow Fever certificate upon arrival. You must check with your doctor well before leaving home about the Yellow Fever requirements for the countries you'll be visiting.

### Sightseeing

*Please note: If entry to a site is affected by changes in operating hours or public holiday closures, your itinerary, where possible, may be adjusted, or a similar activity will be offered in its place (subject to availability).*

### Wildlife

TripADeal cannot guarantee animal sightings. Wildlife are unpredictable and factors such as weather conditions, predatory fear and animal movements can impact sightings.

### Shopping

Shopping overseas can be a daunting and confusing experience, especially when there is a language barrier. Please be very cautious when foreign currencies and prices are involved. If paying by credit card, please pay close attention to the amount you are being charged and keep all your receipts. Do not make any purchases you are not comfortable with or feel pressured into. If you are uncertain or need assistance with the language barrier, please seek assistance from your Tour Guide/Leader. Please refer to our [Terms and Conditions](#) regarding shopping for further information.

### Visas

A tourist visa for Sri Lanka is a strict requirement if travelling on an Australian Passport. You will need a visa in the form of an Electronic Travel Authorisation (ETA) to enter Sri Lanka from 27 September 2024. Limited facilities to obtain an ETA are available at Colombo's Bandaranaike International Airport, however ETA's can be obtained prior to departure.

*Important:*

# Important Information

- *Please check with the nearest Sri Lankan embassy, consulate or immigration department for the current tourist visa requirements and any updates regarding the e-visa for Sri Lanka.*
- *Please start arranging your visa three weeks before departure to account for any delays due to consulate operating hours.*
- *Visa rules are subject to change. Please check with the nearest embassy, consulate or immigration department of the destination/s you are visiting once you receive your travel documentation to ensure you have the most up to date information.*
- *It is your responsibility to be travel-ready and ensure that you are aware and comply with any destination or travel requirements, including the validity of all required travel documents.*
- *Passengers who are not Australian citizens must also check with the respective consulate or visa agency to determine what their visa requirements are and what personal identification is required.*
- *It is also important to note that some areas of employment, such as journalism, government authorities and charity organisations, may have additional restrictions in applying for visas. This may, in turn, affect the type of application required.*

## Travel Insurance

Embarking on your next trip is exciting, and while you hope the unexpected does not happen, it is best to be prepared. We strongly recommend you take out travel insurance when making your booking. Whether it's a potential medical emergency, a flight cancellation, a delayed suitcase, or an unforeseen event, it's important to ensure you're adequately protected. For more information or advice visit <https://www.tripadeal.com.au/travel-insurance>

## Schedule Of Fees

### Voluntary Changes

This includes booking changes requested by you, including but not limited to those

changes requiring an airline ticket or a Purchase Confirmation reissue.

- Changes - \$100 per booking and any additional charges applied by the airline/ cruise company/accommodation/other travel providers.

### Name Changes Due To Passenger Error

If the incorrect name has been provided, charges of \$100 per booking and any additional charges applied by the airline/ cruise company/accommodation/other travel providers.

### Supplier Fees

In the event the tour package you have purchased is unable to proceed, and/or a travel Supplier is unable to fulfil the tour due to external circumstances (Limitation of Liability e.g. a Force Majeure event), there may be a fee or amount of money that is withheld by our Suppliers and is unrecoverable. This may be due to non-refundable airline tickets, cancellation penalties with cruise cabins or unrecoverable payments with our land/accommodation partners. If refunds are not available from Suppliers, we will endeavour to obtain a travel credit on the best terms available and communicate these outcomes to you. In the event we are unable to obtain a refund or travel service credit, or part thereof, this cost is passed on to the customer as a Supplier Fee.