

# Southern Thailand Island Discovery

PHUKET ● KRABI ● KOH LANTA ● KHAO SOK

## The Offer

Experience the best of Southern Thailand on this enchanting 10-day adventure, combining pristine beaches, lush jungles, vibrant culture and unique wildlife encounters.

Begin your journey in the tropical paradise of Phuket with an overnight stay. Relax amidst Phuket's golden shores before diving into unforgettable experiences, including a visit to Phuket's most ethical Elephant Sanctuary, where rescued elephants roam freely in their natural habitat.

From Phuket, venture into the heart of Khao Sok National Park, a jewel of Southern Thailand. Glide across the emerald waters of Cheow Lan Lake on a traditional long-tail boat, surrounded by towering limestone cliffs and dense rainforest. Spend the night at a floating resort, offering a rare chance to sleep amidst nature's embrace and enjoy activities like a wildlife safari and a visit to the mysterious Pakarang Caves.

Continue in Krabi, a region famed for its dramatic karst formations and turquoise waters. Here, embark on a food safari to savour authentic Thai cuisine and visit Hong Island, home to powdery white sand beaches and crystal-clear lagoons. Swim, snorkel, or hike to panoramic viewpoints that

reveal the full splendour of this tropical haven. You'll also have free time to discover Krabi's wonders at your own pace or join optional excursions, such as a visit to the hot springs and Emerald Pool or a kayaking adventure through mangrove forests.

Next, head to the tranquil island of Koh Lanta, a hidden gem where unspoiled beaches meet traditional Thai charm. Koh Lanta offers a perfect escape, whether you wish to unwind by the sea, explore vibrant coral reefs on a snorkelling tour, or discover secluded isles like Koh Rok (optional tour, additional charges apply).

Return to Phuket for a tour of its southern highlights. Visit Promthep Cape for panoramic ocean views, explore the ornate Chalong Temple and wander the streets of Phuket Old Town, renowned for its colourful Sino-Portuguese architecture, before flying home.

This unforgettable journey includes return international full-service flights, 9 nights of 4-star and overwater bungalow accommodation, 14 meals including daily breakfast and more!

Offer available for a limited time or until sold out. TRIP A DEAL PTY LTD: 50149240433

Updated: 11 Jun 2026 08:23:50

Have a question about this deal? We're here to help.  
Call our friendly team on 1300 158 912

1

FREQUENT  
FLYER 

 Trip  
a Deal



PHUKET ● KRABI ● KOH LANTA ● KHAO SOK

## The Offer

Want more? Arrive Early or Stay Behind in Phuket,  
Thailand!

Offer available for a limited time or until sold out. TRIP A DEAL PTY LTD: 50149240433

Updated: 11 Jun 2026 08:23:50

Have a question about this deal? We're here to help.  
Call our friendly team on [1300 158 912](tel:1300158912)

2

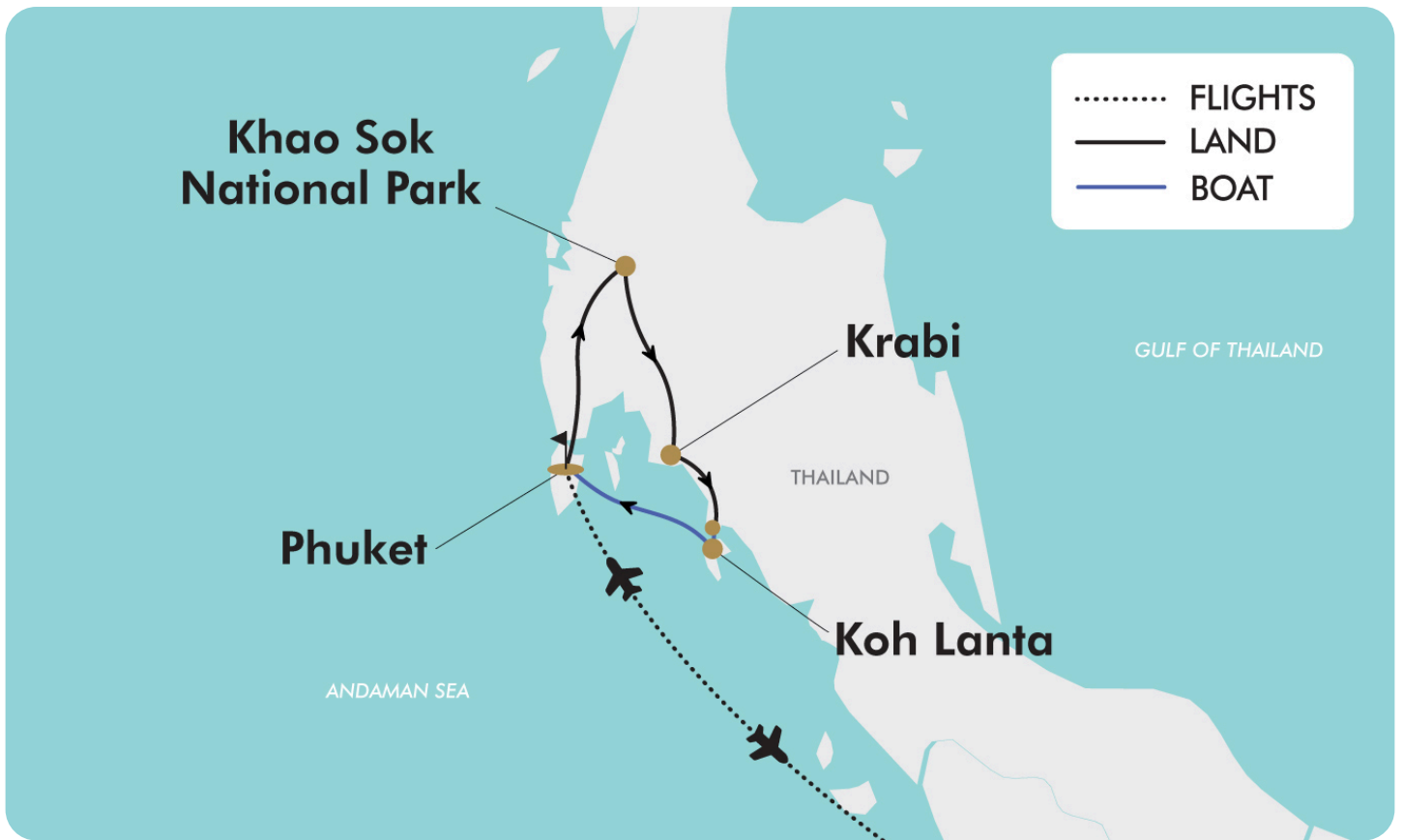
FREQUENT  
FLYER 





**10-DAY TOUR PACKAGE | SOUTHERN THAILAND ISLAND DISCOVERY**

**The Map**



Offer available for a limited time or until sold out. TRIP A DEAL PTY LTD: 50149240433

Updated: 11 Jun 2026 08:23:50

Have a question about this deal? We're here to help.  
 Call our friendly team on 1300 158 912



## 10-DAY TOUR PACKAGE | SOUTHERN THAILAND ISLAND DISCOVERY

### The Itinerary

#### Day 1 Australia (or New Zealand) - Phuket, Thailand

Today, depart from Australia (or New Zealand) and journey to the tropical paradise of Phuket, Thailand. Upon arrival, be met by a tour representative and transfer to the hotel. Spend the rest of the day at leisure, soaking in the island's vibrant atmosphere.

Thailand, often called the Land of Smiles, offers a captivating blend of pristine beaches, rich cultural heritage, and mouthwatering cuisine. Over the next 10 days, experience breathtaking limestone karst cliffs, idyllic white-sand beaches, elephants, unique overwater bungalow stays, and the ultimate escape into island life.

**Overnight: Nai Yang Beach Resort and Spa or similar**

**Meals included: In-Flight**

#### Day 2 Phuket Elephant Sanctuary

Today, enjoy breakfast at the hotel before departing on an unforgettable opportunity to interact with elephants in their natural habitat. The Phuket Elephant Sanctuary is a pioneering ethical elephant tourism initiative in Thailand, offering a safe haven for retired working elephants. Following a scenic drive along a local village, arrive at Phuket Elephant Sanctuary, a picturesque jungle dotted with ponds, wide open fields and hillsides for the elephants to roam around.

The visit starts at the Tree Top Lounge with an educational documentary highlighting the sanctuary's mission and the importance of protecting elephants. Following this, there is an opportunity to feed the elephants as they enjoy their fruit baskets, while guides share insights into each elephant's unique story and background.

The journey continues along Thailand's longest canopy walkway and natural trails, offering views of the elephants as they forage, bathe, and socialise freely. Observing from a respectful distance ensures the elephants can display their natural behaviours, from splashing in ponds to playful interactions with one another. The trip ends with a provided vegetarian Thai dish before being transferred back to the hotel.

In the evening, enjoy a welcome dinner at the Sea Almond Chilled Restaurant & Bar, located directly on the sands of Naiyang Beach. Savour authentic Thai dishes crafted with just the right balance of spice and with stunning coastal views.

*Please note: You will need to prepare a smaller backpack to take with you to Khao Sok (large luggage is difficult to transfer to the boat). Larger suitcases will be stored in the vehicle and returned to you when you depart for Krabi.*

**Overnight: Nai Yang Beach Resort and Spa or similar**

**Meals included: Breakfast; Lunch; Dinner**

#### Day 3 Khao Sok Floating Bungalows

The day begins with a journey from Phuket to Khao Sok National Park, home to the breathtaking Cheow Lan Lake. Arrive at the pier where you step aboard a long-tail boat, kickstarting a day filled with exploration and wonder.

Khao Sok National Park is a mesmerising natural wonderland that captivates with its lush rainforests, towering limestone karsts, and pristine lakes. This ancient rainforest ecosystem is believed to be one of the oldest on Earth, teeming with an incredible diversity of flora and fauna, including elusive wildlife.



## 10-DAY TOUR PACKAGE | SOUTHERN THAILAND ISLAND DISCOVERY

### The Itinerary

Later in the day, we'll provide an opportunity to delve into the ancient mysteries concealed within the Pakarang Caves. These storied chambers reveal the geological history of this remarkable landscape, adding depth to your experience. As the day winds down, return to our floating resort for an evening dinner experience. Imagine dining amidst the jungle's embrace, under a starry sky, while the wilderness comes alive around you.

**Overnight: The Laguna Chiewlarn Floating Resort or similar**  
**Meals included: Breakfast; Lunch; Dinner**

#### Day 4 Khao Sok - Krabi, Night Food Safari

This morning, you will experience a wildlife safari by longboat, where you'll have the opportunity to see numerous birds, monkeys, gibbons and wild boars. Afterwards, enjoy breakfast and time to swim or relax before departing for Krabi.

Once you arrive in Krabi, check in and relax before embarking on a guided evening Food Safari where you will learn about the mouthwatering local Thai delicacies and have the opportunity to try a couple of dishes (included).

**Overnight: Deevana Plaza Krabi Aonang or similar**  
**Meals included: Breakfast**

#### Day 5 Hong Island Snorkelling Tour

Embark on a journey to discover the natural harmony of emerald-green seas, mangrove forests, and striking limestone mountains. The adventure begins with a transfer from the hotel to Nopparat Thara Pier, where the boat departs for Hong Island and its surrounding gems. The first stop is Lao Lading Island, also known as Paradise Island, a tranquil spot perfect for swimming, snorkelling, or relaxing on the beach. From there, the journey continues to the Hong Island Lagoon, a stunning natural formation resembling a grand hall, surrounded by towering limestone cliffs and lined with mangroves. The emerald waters and dramatic scenery make it an ideal spot for capturing photos.

Next, visit Hong Island, home to one of Krabi's most beautiful beaches, with powdery white sand and crystal-clear waters. Here, enjoy a delicious lunch in the shade of large trees, followed by an optional walk to the 360-degree viewpoint. The climb, consisting of 419 steps, offers spectacular panoramic views of the island and surrounding seas. The final destination is Pak Bia Island, two small islands connected by a sandbar during low tide. Relax on its peaceful beach or explore its shallow waters before returning to Nopparat Thara Pier and being transferred back to the hotel where you can enjoy the remainder of the day at leisure.

Please Note: The program is subject to change based on weather conditions.

**Overnight: Deevana Plaza Krabi Aonang or similar**  
**Meals included: Breakfast; Lunch**



## 10-DAY TOUR PACKAGE | SOUTHERN THAILAND ISLAND DISCOVERY

### The Itinerary

#### Day 6 Krabi Free Day

Today, you'll have the opportunity to explore Krabi or you could choose to participate in an optional tour.

Optional Tour: Tiger Caves Temple, Hot Spring Waterfall & Emerald Pool

Duration: 08:00-16:00

Embark on a full-day adventure exploring some of Krabi's most iconic natural and cultural landmarks. Begin with a visit to the Tiger Cave Temple, named after the natural stone inside a cave resembling a tiger's paw and its history as a tiger habitat. Surrounded by lush forest and small caves, the temple's highlight is the Phrathat Chedi, a replica of the Buddha's Footprint, and a large Buddha statue in a meditative posture, located atop Khao Kaeo. This peak, standing approximately 600 metres above sea level, is reached by climbing 1,237 steps. At the summit, enjoy a stunning 360-degree view of Krabi Town, framed by uniquely shaped mountains. Continue the journey with an hour-long drive to the Khlong Thom Hot Spring Waterfall. This unique attraction features warm water seeping through the ground and cascading into natural limestone-formed ponds, resembling bathtubs. With temperatures between 40–50°C, the waterfall's soothing waters are perfect for a relaxing soak amidst the grove forest. A short 15-minute drive brings you to the Emerald Pool, also known as Sa Morakot, located within a tranquil forest. A 1,400-metre nature trail leads to this stunning natural attraction, formed by warm water streams in the lowland forests of southern Thailand. The area features three distinct pools: Sa Kaeo, a clear pool unsuitable for swimming; Sa Morakot, a swimmable emerald-green pool with water temperatures ranging from 30–50°C; and

Sa Namphut, the origin of the Emerald Pool. Sa Namphut's crystal-clear blue waters and vibrant ecosystem, including the rare black-bellied tarot, make it a remarkable site.

Optional Tour: Half-Day Cooking Class at Ya Cookery School

Explore the art of traditional Thai cooking in a charming and welcoming atmosphere. Be guided through the preparation of authentic Thai dishes, discovering the diverse range of ingredients, fruits, and vegetables that form the foundation of Thai cuisine. Please see current pricing in Important Information.

*Morning Program - Duration: 09:00 - 12:30*

This morning session introduces participants to essential Thai ingredients and the art of crafting flavourful Thai salads and other traditional dishes. Through personalised, hands-on training, you will learn the techniques that make Thai cooking so special. Recipes are adaptable to individual tastes, including vegetarian options, ensuring a tailored and enjoyable culinary experience. After preparing the dishes, participants can savour their creations and receive a complimentary recipe book to recreate the dishes at home. Each student is equipped with their own utensils, wok, and stove for an immersive and enjoyable class.

*Afternoon Program - Duration: 13:00 - 17:30*

In the afternoon session, students embark on a deeper culinary journey, learning about Thai ingredients and preparing classic dishes with a focus on traditional vegetables and fruits. As with Program A, the hands-on approach allows each participant to master Thai cooking techniques, with recipes that can be adjusted to personal preferences. After enjoying their culinary creations, students will receive a recipe book to continue exploring Thai cuisine at home. The class provides each



## 10-DAY TOUR PACKAGE | SOUTHERN THAILAND ISLAND DISCOVERY

### The Itinerary

participant with their own set of utensils, wok, and stoves for a fully personalised experience. Whether in the morning or afternoon, the class is a delightful and enriching way to connect with Thailand's culinary traditions and bring home a new set of cooking skills.

#### Optional Tour: Half-Day Morning Kayaking at Ao Thalane

Duration: 08:30 to 12:00

In the morning, embark on a friendly kayaking adventure through the stunning Ao Thalane where canyons, lagoons and limestone formations provide a breathtaking backdrop. Paddle through tranquil mangrove forests, immersing yourself in the rich ecology of the area. Keep an eye out for local wildlife including monkeys, mudskippers, crabs and various shell species. After a brief stop at Tha Lane Pier for kayaking training, you'll glide through a 500-foot channel with excellent opportunities for nature spotting. This activity can be paired with the afternoon cooking class. Please see current pricing in Important Information.

**Overnight: Deevana Plaza Krabi Aonang or similar**

**Meals included: Breakfast**

#### **Day 7 Krabi - Koh Lanta**

Depart Krabi this morning for Koh Lanta, travelling by car and ferry. Upon arrival, head to your hotel and enjoy the rest of the day at leisure.

Koh Lanta is a hidden gem, offering a perfect blend of natural beauty, cultural richness, and a tranquil atmosphere. While often overshadowed by busier destinations like Phuket and Koh Phi

Phi, Koh Lanta provides a more relaxed and authentic Thai experience, making it the ideal spot for those seeking peace and unspoiled charm.

**Overnight: Twin Lotus Koh Lanta or similar**

**Meals included: Breakfast**

#### **Day 8 Koh Lanta Free Day**

Today you'll have the day to explore this idyllic island independently, alternatively, you can choose to participate in an optional tour.

#### Optional Tour: Four Islands

Embark on a day trip to explore the stunning islands of Koh Mah, Koh Chuak, Koh Ngai, Koh Mook, and the famous Emerald Cave (Tham Morakot), often considered the highlight of the day. After being picked up from your hotel in Koh Lanta, enjoy a scenic boat ride to Koh Mook, where you'll discover the hidden gem of the Andaman Sea. The Emerald Cave, with its mysterious allure, leads to a small, secluded beach surrounded by towering cliffs, resembling a hidden crater. You'll also have the opportunity to snorkel in the vibrant coral reefs, teeming with marine life, while enjoying the beauty of the surrounding islands.

Pricing for this optional tour can be viewed in the Important Info section of our website or during checkout.

#### Optional Tour: Koh Rok & Koh Haa

Set sail on a thrilling island-hopping tour to the small yet beautiful Koh Rok and Koh Haa, located south of Koh Lanta in the Mu Koh Lanta National Park. Cruise by speedboat to these pristine islands, stopping for multiple opportunities to swim and snorkel in the crystal-clear waters of the Andaman Sea. Along the



## 10-DAY TOUR PACKAGE | SOUTHERN THAILAND ISLAND DISCOVERY

### The Itinerary

way, admire natural wonders like the Koh Rok Waterfall and enjoy a delicious Thai-style lunch by the beach. With hassle-free pickup and drop-off from your Koh Lanta hotel, this tour offers a perfect blend of adventure, relaxation, and stunning scenery.

Pricing for this optional tour can be viewed in the Important Info section of our website or during checkout.

**Overnight: Twin Lotus Koh Lanta or similar**  
**Meals included: Breakfast**

#### Day 9 Koh Lanta - Phuket, City Tour

Today depart Koh Lanta for Phuket, once arrived embark on a captivating tour of Phuket, where you'll discover the island's natural beauty, rich history, and unique architecture. Start the journey at Promthep Cape, the southernmost point of the island, offering stunning views of the Andaman Sea, surrounded by palm trees and grassy landscapes. On one side, you'll see Nai Harn Beach and Koh Man, while on the other, the quiet Nai Yah Beach awaits. Next, visit the beautiful Chalong Temple, known for its Portuguese architectural influence and home to a remarkable wax sculpture of the abbot.

The tour concludes with a visit to Phuket Old Town, where you can admire the charming European-influenced buildings from the early 20th century. Finally, indulge in Phuket's local flavours at Punte Traditional Food Center, sampling popular dishes that preserve the island's culinary heritage.

**Overnight: Nai Yang Beach Resort and Spa or similar**  
**Meals included: Breakfast; Lunch**

#### Day 10 Phuket, Thailand - Australia (or New Zealand)

Today, at the appropriate time, be transferred to the airport for your return flight to Australia (or New Zealand). Once arrived, make your own onward travel arrangements.

**Meals included: In-Flight**



## 10-DAY TOUR PACKAGE | SOUTHERN THAILAND ISLAND DISCOVERY

### Tour Inclusions

#### HIGHLIGHTS

Discover the best of Southern Thailand's food, culture and natural beauty on a small-group tour

Journey to Thailand's most ethical Elephant Sanctuary and marvel at the gentle giants in their habitat

Stay overnight in a floating bungalow on the mesmerising Cheow Lan Lake

Be captivated by striking limestone karsts and ancient rainforests in Khao Sok National Park

Embark on a guided foodie tour in Krabi and sample local delicacies

Discover pristine islands and snorkel through clear waters on a full-day Hong Island tour

Enjoy time at leisure in the tropical paradise of Krabi, on Thailand's Andaman Coast

Stay in Koh Lanta, an unspoiled and authentic island with vibrant coral reefs and traditional Thai villages

Explore Phuket's iconic landmarks on a guided tour, from Chalong Temple to scenic Promthep Cape

#### FLIGHTS

Return international full-service flights (economy class), surcharges may apply.

#### ACCOMMODATION

9-nights 4 star and overwater bungalow accommodation

#### DINING

Enjoy 14 meals, including daily breakfast

#### ESSENTIALS

English-speaking tour guides

Airline taxes and surcharges

National park fees

#### TRANSPORT

Transportation by air-conditioned vehicles

#### TRANSFERS

Return airport transfers

# Important Information

*\*Please note: All information provided in this brochure is subject to both change and availability. Prior to purchase please check the current deal for up-to-date information. If you have already purchased this deal, the terms and conditions on your Purchase Confirmation apply and take precedence over the information in this brochure.*

## Booking Information

After purchase, you will receive a receipt and a Purchase Confirmation, directing you to an online Passenger Information Form. You must complete the Passenger Information Form within 72 hours of purchase.

Any special requests, preferences and optional extras MUST be clearly stated in your Passenger Information Form. Any change requested after submitting your Passenger Information Form cannot be guaranteed, is strictly subject to availability and will incur surcharges as outlined in the Schedule of Fees below.

*Please note: All countries and territories have different entry requirements in relation to vaccinations, quarantine/isolation periods and travel restrictions. Due to the evolving nature, we would ask all of our customers to monitor, meet and adhere to the specific requirements of their intended destination(s) in the lead-up to and immediately before travel, as well as any requirements post-travel upon their return.*

## Our Policies

### Cancellation and Refund Policy

By placing a booking with us, you acknowledge the following important information:

- **we act as your booking agent ;**

TripADeal is a booking services provider, and curates the Travel Offers available on our website. We act as your booking agent, and we receive payment for the Booking Services as part of the booking price, however, we do not provide any of the Travel Services (flights, accommodation, tours or other products or services) included in your booking – the Travel Services are provided by a number of third party Travel Suppliers.

- **each booking is unique ;** our Travel Offers are made up of a variety of different components and are, during the booking process, uniquely tailored to suit your requirements, for example, departure dates and ports, flight and room upgrades, tour inclusions, etc.

- **changes/modifications to your booking may not be possible ;** once your booking has been made, changes or modifications may not be possible, and where possible, may incur a fee. It is important to ensure that the information you provide during the booking process is accurate and up to date, and that you read the Travel Offer carefully before placing your order.

- **Travel Offers are a package ;** our Travel Offers have been curated into package offerings and must be used as a package – individual components cannot be used independently of the full package offering.

- **our Travel Offers are generally non-refundable;** in order to provide great value Travel Offers, we work with a variety of Travel Suppliers to find the best deals – this often means the Travel Suppliers' offerings are non-refundable to ensure the best price. We recommend that you obtain travel insurance as soon as you make a booking with us. If your plans change, you can receive a full refund (excluding credit card fees) if you cancel at least 12 months in advance to your scheduled departure date.

To read more about our Cancellation and Refund Policy, please click [here](#).

### General Terms & Conditions

By placing your booking with us, you acknowledge and agree to our [Terms and Conditions](#), [Privacy Policy](#) and [Cancellation Policy](#).

## Offer Essentials

This Travel Offer is valid for travel on selected dates until the 26th October 2027.

Minimum group size 6, maximum group size 20 per vehicle.

This Travel Offer is priced per person

based on a twin share.

### Departure Dates & Surcharges

See checkout for live dates and availability.

### Single Traveller Supplement

For solo travellers, a mandatory single supplement applies:

2026: \$755

2027: \$895

*Please note: Accommodation for single customers who are travelling on a tour or cruise package may be in a single room, depending on availability.*

### Child Policy

- No child discounts are offered. The full price applies to all children travelling with their parents.
- Valid for children 10 years old and over.

*Please note: Children must be accompanied by a responsible adult 18 years old and over to travel. No unaccompanied minors are allowed.*

## Flights

### Departure Cities

Sydney, Melbourne, Brisbane\*, Adelaide\*, Perth & Auckland\*

### Departure City Surcharges

Adelaide: \$200 per person

Brisbane: \$300

Auckland: \$550 per person

### International Flight(s)

Full-Service Airline(s) Used

- Cabin Class: Economy Class

*Please note: We cannot accommodate one-way flights. Travellers must take all included flights within the package, and any flights intentionally forfeited will result in later flights being subject to cancellation.*

### Preferred Airline Surcharge

- Cabin Class: Economy Class
- Singapore: \$420 per person

**Please note:**

# Important Information

- Preferred airlines are subject to availability. If we are unable to fulfil your request, the above extra cost will be refunded.
- On any upgrade purchase, short-haul flights and domestic flight sectors are not guaranteed, subject to aircraft configuration.
- In the event that a purchased stopover package and a purchased preferred airline upgrade are not compatible, you will have the option to receive a refund for the preferred airline upgrade or be offered an alternative stopover city option, e.g if you choose to fly with Singapore Airlines you cannot stopover in Dubai.
- Preferred airline refers to the marketing carrier and could include codeshare partners.

## Arrive Early and Stay Behind Options

Fly out and return home up to 60 days pre and post your tour dates.

### Arrive Early

Phuket, Thailand - From \$300 per person, subject to availability.

### Stay Behind

Phuket, Thailand - From \$300 per person, subject to availability.

### Please note:

#### • Exclusions:

*This fee does not include extra nights' accommodation, meals or airport transfers.*

#### • Cancellations & Changes:

*Flight booking changes or cancellations after air tickets have been issued are not guaranteed and may incur additional fees and fare difference, subject to the airline cancellation and change policies. Flight changes are subject to availability at the time of booking.*

#### • High-Season:

*A high-season Arrive Early or Stay Behind can be purchased for an additional charge, subject to availability. For pricing, please refer to the cart.*

#### • + 60 days:

*You can fly out up to 60 days before your package's start date, and/or return home 60 days after your package's end date. Should you wish to fly out or return home for more than 60 days from the tour, please contact us to request availability. Additional costs may apply.*

#### • Estimated dates:

*Your estimated departure, return, and arrival dates are all subject to availability and may vary. The confirmed schedule for all flights will be provided when you receive your flight tickets.*

- High season surcharges apply to flights departing between the below date ranges:
- 6th January 2025 - 31st January 2025
- 28th March 2025 - 27th April 2025
- 16th June 2025 - 20th July 2025
- 15th September 2025 - 12th October 2025
- 1st December 2025 - 19th December 2025
- 20th December 2025 - 4th January 2026
- 5th January 2026 - 31st January 2026
- 3rd April 2026 - 20th April 2026
- 26th June 2026 - 17th July 2026
- 18th September 2026 - 9th October 2026
- 12th December 2026 - 18th December 2026
- 19th December 2026 - 3rd January 2027
- 4th January 2027 - 26th January 2027

#### Stopover Packages

\* Singapore

\* Kuala Lumpur, Malaysia

Includes:

- 2, 3 or 5 nights in 4-star accommodation
- Daily breakfast
- Return airport transfers

For pricing, please refer to the payment cart at checkout.

### Please note:

- When a pre and post-tour stopover is chosen, the same stopover location must be chosen each way, due to the airline used.

- When selecting to Arrive Early for your tour in conjunction with a Stopover Package, your fly out date from home will take place before the stopover.
- When selecting to Stay Behind after your tour in conjunction with a Stopover Package, your stopover will take place before your final flight home.
- Stopover packages are subject to availability.
- In the event that a purchased stopover package and a purchased preferred airline upgrade are not compatible, you will have the option to receive a refund for the preferred airline upgrade or be offered an alternative stopover city option, e.g if you choose to fly with Singapore Airlines you cannot stopover in Dubai.
- Blackout dates apply to flights departing between the below date ranges:
- 02 October - 08 October 2025
- 22 December 2025 to 2 January 2026

## Flight Class Upgrades

Business or Premium Economy Class: For pricing, please refer to the payment cart at checkout.

### Please note:

- Flight upgrades are subject to availability and pricing changes (if we cannot fulfil your request, the upgrade cost will be refunded).
- On any upgrade purchase, short-haul flights and domestic flight sectors are not guaranteed, subject to aircraft configuration.

## Missed Flights

If you fail to arrive for your outbound flight, you risk all flight and land arrangements in your destination being automatically cancelled by the airlines and land operator, respectively. Additional fees may apply to reinstate these services. If you miss your flight for whatever reason, please contact us as soon as possible to make arrangements.

## Accommodation

### Accommodation Used:

4-Star Properties (Self-Rated)

# Important Information

Phuket: Nai Yang Beach Resort and Spa or similar  
Krabi: Deevana Plaza Krabi Aonang or similar  
Koh Lanta: Twin Lotus Koh Lanta or similar

## Speciality Property:

Khao Sok National Park: The Laguna Chiewlarn Floating Resort or similar

*Please note: Accommodation/rooms offered are based on a lead-in room type and are subject to availability based on seasonality. In the instance a property is not available, a similar standard of accommodation will be provided. Properties will be confirmed and included in your travel pack, which you will receive 4-6 weeks before travel.*

## Extra Nights

Not available.

*Please note: If you are interested in booking additional nights of accommodation pre or post-tour, please wait until you receive your travel documentation approximately 4-6 weeks before departure for the confirmed list of hotels. If booking your own additional accommodation directly with the hotel, please be aware that you may be required to change rooms at the start/end of your tour.*

## Maximum Room Capacity

2 people.

## Triple Share

Not available.

## Bedding Configuration

Twin or double (subject to availability).

## Optional Tours/activities

Day 6: Tiger Caves Temple, Hot Spring Waterfall & Emerald Pool - \$100 per person

Day 6: Half-Day Cooking Class at Ya Cookery School - \$75 per person

Day 6: Half-Day Kayaking at Ao Thalane - \$65 per person

Day 8: Four Islands - \$85 per person

Day 8: Koh Rok & Koh Nau Lie - \$95 per person

*Please note:*

• *Prices are based per person, are subject to availability, time permitting and weather conditions*

• *The optional tours listed above must be purchased on checkout or over the phone before submitting your passenger information form (subject to availability).*

• *Some tours require minimum numbers to operate.*

## Exclusions

- Visa fees and requirements
- Domestic transfers and flights not stated in the deal offer
- Meals/beverages not stated in the deal offer
- Optional gratuities/tipping
- Optional activities/tours
- Personal expenses
- Travel insurance
- Any costs associated with an interruption to your tour as a result of an airline schedule change or cancellation
- Mandatory city tax

## Gratuities / Tipping

### Land

Gratuities (tips) are not included for the services of the tour leader (when available) and driver throughout the tour. The recommended tip is approximately \$5-\$10 AUD per person per day. This covers the guide/leader and the driver and will be collected on tour.

*Please note: Tipping for services provided is always a matter of personal discretion; however, please be aware that many locals consider tipping part of their normal remuneration, and they may approach you for payment; there's no need to be intimidated by the request.*

## Other Important Information

### TOUR GUIDE VS. TOUR LEADER

#### Tour Guide:

Often locals with intimate knowledge of an area, its culture, and history. Their role entails providing commentary, routing the tour, and seeing that people have a good

time. They are a licensed, qualified expert who supplies specific information on the history, art, architecture and culture of the city/village/attraction where they are guiding the tour. The guide meets the group at the required place and leaves it at the end of the tour; they do not travel with the group.

#### Tour Leader:

An experienced person tasked with ensuring the smooth operation of tours, as well as providing practical support to passengers throughout the whole trip. Their role primarily includes assisting with accommodation, transportation between locations, and communication with tour guides at each stop. A tour leader may provide general guidance around a city or village and offer information on the place visited on the bus. However, they are not required to have specific art, architecture, or historical knowledge. They are not allowed to provide a guided tour or commentary of a city/village/attraction once there and, if caught doing so, can be fined.

*Please note: Tour leaders/guides are not a standard inclusion in all travel offers. Tour leaders/guides will only be made available when required to enhance the experience of the destination featured.*

### CLIMATE & AVERAGE TEMPERATURES

Phuket experiences a tropical monsoon climate with warm temperatures year-round. The weather can be divided into three main seasons: dry, hot, and rainy.

#### Dry Season (November to February)

)  
Average Temperatures: 23°C to 31°C  
This is the most pleasant time of the year, with lower humidity and plenty of sunshine. Cool breezes and calm seas make it ideal for beach activities and outdoor adventures.

Hot Season (March to May)

#### Average Temperatures: 25°C to 34°C

The hottest period in Phuket, with higher humidity levels. Afternoons can feel particularly warm, but evenings are often

# Important Information

cooler. Occasional thunderstorms bring brief relief from the heat.

## Rainy Season (May to October)

Average Temperatures: 24°C to 32°C

Also known as the monsoon season, this period sees frequent rain showers, often in the afternoon or evening. While it may rain heavily, sunny intervals are common. The seas can be rough during this time, so caution is advised for water activities.

## FLIGHTS

### Seat Selection & Frequent Flyer Points:

We do not arrange seat selection. It is essential to highlight that some airlines do not allow pre-selected seats. We strongly suggest you contact the airline directly with seating allocation requirements and/or arrive at the airport earlier to arrange your seating. While we do not add frequent flyer member details to bookings, you can do this directly with the airline once you have your flight information.

### Passport Validity:

Customers must provide valid passport details either at the time of purchase or no later than 45 days before the departure date. Failure to do so may result in the cancellation of the booking. Customers will be responsible for any costs and fees incurred in this instance.

## COACH TOUR

### Meals:

For meals not included, the tour leader (when available) will offer assistance with reservations, suggestions and directions to local restaurants. It is your responsibility to notify us of any dietary requests/requirements.

*Please note: We will do our best to meet your requests/requirements; however, we cannot guarantee that we will always be able to.*

### Luggage:

You will be responsible for all your personal belongings whilst on tour. You must carry your own luggage from the vehicle to the hotel room and back to the

vehicle. The driver will assist with the uploading and unloading of bags from the vehicle.

## OTHER

### Mobility:

If you require wheelchair access please contact our friendly sales and service team to inquire on your behalf.

### Weather

We always suggest referring to an online source for the most up-to-date weather information for your destination/s.

### Fitness Level Required:

Adventure (and spontaneity) create some of the best travel memories. Bear in mind, your home schedules and timings might not be adhered to on tour - it's all part of the fun!

A moderate level of fitness will be required.

Expect a moderate pace of touring with a focus on guided tours that may include full days with extended activity, guided city tours or nature walks. You will require a general level of fitness for unassisted navigation of stairs and inclines, longer distances with possible periods of standing when visiting sites, walking on sloping, uneven ground or elevations. You will be responsible for your own luggage and have the ability to board all modes of transport without assistance. Please note: Many areas may be inaccessible to wheelchairs or mobility scooters, where the unassisted use of personal walking sticks and other aids may be required. Although some assistance may be available, every traveller should be self-reliant during all aspects of their travel.

The overwater bungalow accommodations feature pathways that may become slippery and require good balance to navigate. This package also includes boat trips aboard traditional long-tail boats, where boarding and disembarking involve stepping onto a moving vessel from a jetty, necessitating careful balance.

*Please note: It is expected that every traveller must be self-reliant and able to undertake all*

*aspects of their own travel. Please speak to your booking agent about your personal circumstances and any assistance requirements to ensure this tour is right for you.*

*Please note: If you have any concerns, please consult your healthcare provider prior to purchase/travel.*

### Sightseeing:

*Please note: If entry to a site is affected by changes in operating hours or public holiday closures, your itinerary, where possible, may be adjusted, or a similar activity will be offered in its place (subject to availability).*

### Wildlife

TripADeal cannot guarantee animal sightings. Wildlife are unpredictable and factors such as weather conditions, predatory fear and animal movements can impact sightings.

### Shopping:

Shopping overseas can be a daunting and confusing experience, especially when there is a language barrier. Please be very cautious when foreign currencies and prices are involved. If paying by credit card, please pay close attention to the amount you are being charged and keep all your receipts.

Do not make any purchases you are not comfortable with or feel pressured into. If you are uncertain or need assistance with the language barrier, please seek assistance from your Tour Guide/Leader. Please refer to our [Terms and Conditions](#) regarding shopping for further information.

## Visas

### Thailand:

From the 1st of May 2025 all Australians will be required to complete the Thailand Digital Arrival Card (TDAC) online prior to arrival. Travellers must register online within three days prior to arriving in Thailand. They can do so via this link: <https://tdac.immigration.go.th/arrival-card/#/home>

**Important:**

# Important Information

- *Please start arranging your visa three weeks before departure to account for any delays due to consulate operating hours.*
  - *Visa rules are subject to change. Please check with the nearest embassy, consulate or immigration department of the destination/s you are visiting once you receive your travel documentation to ensure you have the most up to date information.*
  - *It is your responsibility to be travel-ready and ensure that you are aware and comply with any destination or travel requirements, including the validity of all required travel documents.*
  - *Passengers who are not Australian citizens must also check with the respective consulate or visa agency to determine what their visa requirements are and what personal identification is required.*
  - *It is also important to note that some areas of employment, such as journalism, government authorities and charity organisations, may have additional restrictions in applying for visas. This may, in turn, affect the type of application required.*
- Changes - \$100 per booking and any additional charges applied by the airline/ cruise company/accommodation/other travel providers.

## **Name Changes Due To Passenger Error**

- If the incorrect name has been provided, charges of \$100 per booking and any additional charges applied by the airline/ cruise company/accommodation/other travel providers.

## **Supplier Fees**

In the event the tour package you have purchased is unable to proceed, and/or a Travel Supplier is unable to fulfil the tour due to external circumstances (Limitation of Liability e.g. a Force Majeure event), there may be a fee or amount of money that is withheld by our Suppliers and is unrecoverable. This may be due to non-refundable airline tickets, cancellation penalties with cruise cabins or unrecoverable payments with our land/accommodation partners. If refunds are not available from Suppliers, we will endeavour to obtain a travel credit on the best terms available and communicate these outcomes to you. In the event we are unable to obtain a refund or travel service credit, or part thereof, this cost is passed on to the customer as a Supplier Fee.

## **Travel Insurance**

Embarking on your next trip is exciting, and while you hope the unexpected does not happen, it is best to be prepared. We strongly recommend you take out travel insurance when making your booking. Whether it's a potential medical emergency, a flight cancellation, a delayed suitcase, or an unforeseen event, it's important to ensure you're adequately protected. For more information or advice visit <https://www.tripadeal.com.au/travel-insurance>

## **Schedule Of Fees**

### **Voluntary Changes**

This includes booking changes requested by you, including but not limited to those changes requiring an airline ticket or a Purchase Confirmation reissue.