



Antarctica Expedition & South America Explorer

BRAZIL • ARGENTINA • ANTARCTICA

The Offer

Experience an unforgettable adventure from colourful South America to the icy wonders of Antarctica. This is your chance to fully immerse yourself in incredible landscapes and cultures like never before.

Your journey begins in Brazil, where you'll uncover the highlights of Rio de Janeiro. Stand in awe of the iconic Christ the Redeemer statue, stand on the summit of Mount Corcovado and photograph the colourful Selaron Stairs. Catch a flight to Foz do Iguaçu to explore the Brazilian and Argentinian sides of Iguazu Falls, notable for its 275 cascading falls and outstanding natural beauty. Look out for toucans and macaws as you wander elevated walkways to take in breathtaking views of the spectacular testament to nature's grandeur and power.

Hop on a plane to Argentina, where you'll tour charming Buenos Aires before delighting in a passionate tango show and 3-course dinner. Your adventure continues with a charter flight to Ushuaia, where you then board a state-of-the-art Hurtigruten expedition ship to cross the Drake Passage. Onboard, you can relax in the elegant Explorer lounge with floor-to-ceiling windows, a high-tech Science Center and an infinity pool. Savour all-inclusive gourmet

dining at restaurants with menus drawn from regional flavours. Revitalise your body and mind with access to the sauna, fitness room and hot tubs.

As you arrive in Antarctica, you'll be surrounded by towering glaciers and colossal icebergs. Enjoy days on the frozen continent with the experienced Expedition Team, cruising on Zodiac boats, joining optional kayaking excursions and more. Wildlife enthusiasts will jump at the chance to spot penguins shuffling across the ice, observe whales feeding on krill in late summer and listen for the call of playful seals.

Delight in a truly unique experience with return international full-service flights, all internal flights, a 10-night all-inclusive Hurtigruten cruise, 41 meals and more.

Want more? Extend your holiday with a pre-tour extension to discover the highlights of Peru, including Machu Picchu and Cusco.

Offer available for a limited time or until sold out. TRIP A DEAL PTY LTD: 50149240433

Updated: 17 Jul 2025 11:13:34

Have a question about this deal? We're here to help.
Call our friendly team on 1300 158 912



23-DAY CRUISE & TOUR PACKAGE | ANTARCTICA EXPEDITION & SOUTH AMERICA EXPLORE

The Itinerary

Itinerary 1

Day 1 Australia (or New Zealand) - Rio de Janeiro, Brazil

Today, you'll depart from Australia (or New Zealand) for Rio de Janeiro, Brazil. Upon arrival, you will be met by a tour representative and transferred to the hotel.

Rio de Janeiro, often called 'Cidade Maravilhosa' meaning The Marvellous City, is world-renowned for its breathtaking landscapes and crystal clear seas. It's features some of the Brazil's most famous tourist attractions such as Pão de Açúcar (Sugarloaf Mountain), Corcovado Mountain (where Christ the Redeemer Statue is located) and the iconic beaches of Copacabana and Ipanema. This city is full of energy and rhythm while the locals are known for their carefree spirit and charm.

Please note:

- Due to flight scheduling and availability, some departures may occur on Day 0. Affected customers must be at the airport the day before. Flight times will be indicated on your final documentation which you will receive prior to departure.
- Some customers may experience an extended layover in Santiago de Chile. Lounge passes may be purchased at your own expense.

Overnight: Novotel Rio de Janeiro or similar

Meals included: In-Flight

Day 2 Christ the Redeemer

Today, you will be picked up from your hotel to get up close to the iconic Christ the Redeemer statue.

The journey begins with a scenic drive through a lush tropical forest, leading to the summit of Mount Corcovado. Standing 704 meters above the city of Rio, the statue is the city's most

recognisable landmark and a cultural symbol of Brazil. It's also one of the New Seven Wonders of the World along with Machu Picchu, the Great Wall of China and the Roman Colosseum.

Following this, you'll visit the remarkable Selarón Stairs, a vibrant mosaic masterpiece created by Chilean artist Jorge Selarón. Stretching 125 meters, these colourful steps serve as a tribute to Rio de Janeiro and are a source of inspiration for the local community.

After the tour, transfer back to the hotel and enjoy the remainder of the day at leisure.

Please note: The tour operation is subject to changes for the festive season.

Overnight: Novotel Rio de Janeiro or similar

Meals included: Breakfast

Day 3 Rio de Janeiro Free Day

Today, enjoy a free day to explore at your leisure.

Overnight: Novotel Rio de Janeiro or similar

Meals included: Breakfast

Day 4 Rio de Janeiro Free Day

Today, enjoy another free day to explore this vibrant city at your own pace.

Overnight: Novotel Rio de Janeiro or similar

Meals included: Breakfast





23-DAY CRUISE & TOUR PACKAGE | ANTARCTICA EXPEDITION & SOUTH AMERICA EXPLORE

The Itinerary

Itinerary 1

Day 5 Rio de Janeiro - Iguazú Falls Tour (Brazilian-Side) - Puerto Iguazú

After breakfast, you'll be transferred to the airport for a 2-hour flight to Foz do Iguaçu, a small town near Iguazú Falls.

Recognised as a UNESCO World Heritage Site, Iguazú Falls boasts around 275 individual waterfalls and is celebrated for its outstanding natural beauty and ecological importance. Join a half-day guided tour of the Brazilian side of the Iguazú National Park where you'll visit iconic landmarks such as Devil's Throat waterfall. The stunning scenery is often complemented by the nearly constant rainbows formed by the mist from the falls.

Afterwards, enjoy lunch at one of the park's restaurants (not included) before transferring to your hotel in Puerto Iguazú on the Argentinian side of the park.

Overnight: Falls Iguazu Hotel & Spa or similar

Meals included: Breakfast

Day 6 Iguazú Falls (Argentinian-Side)

After breakfast, meet your guide to explore the Argentinian side of Iguazú National Park. The park features a network of trails and elevated walkways that protecting the natural habitat of the local wildlife. These raised platforms offer breathtaking views of the falls and surrounding scenery. Enjoy lunch at one of the park's restaurants (not included) or bring your packed lunch from Puerto Iguazú to enjoy outdoors.

In the afternoon, return to your hotel in Puerto Iguazú.

Optional Activity: The Great Adventure Tour

Led by experienced guides, this unique tour starts from the Sendero Yacaratiá jungle trail with special transportation that allows a panoramic view of the magical surroundings. A short way into the jungle, follow stairs up to a floating platform where a motorboat waits to take you through the Canyon of the Iguazú River. After enjoying the view from San Martin Island, you will sail to Tres Mosqueteros (Three Musketeers) waterfall, where the Brazilian and Argentinean sides and the Devil's Throat can be appreciated. From there, sail along the island's shore until you reach the face of the San Martin waterfall, an unforgettable experience. This activity is bookable on tour. Please see current pricing in Important Information.

Please note:

- *The Great Adventure Tour will take place during the scheduled tour of the Argentinian side of the falls mentioned in the itinerary above. Customers who purchase the Great Adventure Tour will split from the main group partway through the scheduled tour to take part in this optional tour.*
- *This tour is not suitable for the following:*
 - *Children under 12 years old*
 - *Pregnant women*
 - *People with osteoporosis, neck, back conditions or surgery*
 - *People with heart conditions or surgery*
 - *People with COPD or neurological conditions or surgery*
 - *People with any physical, cognitive or/and sensorial disability unable to react in a nautical emergency*

Overnight: Falls Iguazu Hotel & Spa or similar

Meals included: Breakfast



23-DAY CRUISE & TOUR PACKAGE | ANTARCTICA EXPEDITION & SOUTH AMERICA EXPLORE

The Itinerary

Itinerary 1

Day 7 Puerto Iguazú - Buenos Aires

After breakfast at the hotel, you'll be transferred to the airport for your flight to Buenos Aires, Argentina. Upon arrival, you will be met and transferred to your hotel where you can enjoy the remainder of the day at leisure. Your centrally located hotel provides easy access to nearby restaurants, entertainment and local attractions, making it the perfect base to explore this vibrant city.

Overnight: Libertador Hotel Buenos Aires or similar

Meals included: Breakfast

Day 8 Buenos Aires City Tour & Evening Tango Show

After breakfast, embark on a city tour of Buenos Aires to discover the charm of this vibrant metropolis. Begin at Plaza de Mayo, a key site in Argentina's political history, before heading to one of the city's oldest neighbourhoods. San Telmo is known for its cobblestone streets, antique shops and picturesque architecture. You'll then explore the colourful neighbourhood of La Boca, famous for its tango culture and vibrant Caminito Street.

Visit important landmarks such as La Casa Rosada (the Presidential Palace, known as The Pink House), the Cabildo (the colonial town hall), and the Neoclassical Metropolitan Cathedral where Argentina's founding father is laid to rest. Finally, admire the ornate mausoleums at the celebrated Recoleta Cemetery before stopping at Eva Peron's grave, one of the country's most recognisable icons.

After the city tour, return to your hotel and enjoy the afternoon at leisure.

In the evening, you'll be transferred to Cafe de los Angelitos for a 3-course dinner and an unforgettable tango show. Café de Los Angelitos is a leading venue for tango in the city's most elegant setting, preserving the luxury and distinction of a bygone era. Enjoy performances by tango orchestras, folk music, dancers and singers.

Overnight: Libertador Hotel Buenos Aires or similar

Meals included: Breakfast; Dinner

Day 9 Hurtigruten Expeditions Program Commences

Today marks the start of your Hurtigruten Expedition adventure as you transfer to a new hotel and enjoy the day at leisure.

Please note: Hurtigruten Expeditions requires all guests to complete a Medical Screening Form for remote destinations, including Antarctica. This form is divided into two sections: Section A (completed by you) and Section B (completed by your doctor). The forms must be submitted for review 4 to 8 weeks prior to departure. If the required information is missing, you may need to resubmit it. Failure to complete the forms may result in being unable to board the cruise.

Overnight: Hotel NH Buenos Aires Tango or similar

Meals included: Breakfast

Day 10 Buenos Aires - Ushuaia, Argentina - Board Hurtigruten Expeditions Ship

This morning, you'll be transferred to the airport for your early flight to Ushuaia, Chile.





23-DAY CRUISE & TOUR PACKAGE | ANTARCTICA EXPEDITION & SOUTH AMERICA EXPLORE

The Itinerary

Itinerary 1

In Ushuaia, a state-of-the-art hybrid-powered Hurtigruten expedition ship awaits. Once onboard, you'll attend a mandatory health and safety briefing before enjoying a welcome dinner hosted by the Expedition Team. Afterwards, take some time to explore the ship.

Please note: There are 2 different expedition ships used during the Antarctica season. For specific details about which ship operates during your departure date, refer to the Cruise section in the Important Information.

Overnight: MS Fridtjof Nansen or MS Roald Amundsen
Meals included: Breakfast; Lunch; Dinner

Day 11 Drake Passage

The ship will cross the infamous Drake Passage, named after English sea captain Sir Francis Drake who stumbled upon it in 1578.

With no landmass at this latitude, the waters can be turbulent, but there's no need to worry because Hurtigruten's ultra-modern expedition ships can easily handle the "Drake Shake".

The 2-day journey across the 1,000 kilometre-wide passage gives you time to prepare for your Antarctic adventure. The Expedition Team will begin their lecture series in the onboard Science Centre, sharing their extensive experience and teaching you how to make your visit safe and sustainable. You'll also learn how to comply with IAATO guidelines including wearing sterilised rubber boots when ashore and vacuuming your clothing to remove

foreign contaminants. During this time, you can participate in exciting Citizen Science projects like whale counting and cloud observation which contribute to live research.

While onboard, you can also take advantage of the amenities by working out in the gym, relaxing in the Wellness Area or enjoying meals at the exquisite restaurants. Don't forget to head out on deck to look for the first icebergs and spot wildlife like whales and dolphins.

Overnight: MS Fridtjof Nansen or MS Roald Amundsen
Meals included: Breakfast; Lunch; Dinner

Day 12 Drake Passage

Today, you'll continue your journey across the legendary Drake Passage. With each passing hour, the excitement builds as you draw closer to the icy wonderland of Antarctica.

Overnight: MS Fridtjof Nansen or MS Roald Amundsen
Meals included: Breakfast; Lunch; Dinner

Day 13 Antarctica

For the next few days, you'll be surrounded by vast icy waters, towering glaciers and colossal icebergs that seem to stretch into infinity. The sheer scale and beauty of the landscape are almost otherworldly, and at times, you may find yourself simply taking a moment to absorb it all. You'll find that the silence of this frozen world will soon be interrupted by the excited shouts of fellow passengers as penguins, seals and whales make their appearances.





23-DAY CRUISE & TOUR PACKAGE | ANTARCTICA EXPEDITION & SOUTH AMERICA EXPLORE

The Itinerary

Itinerary 1

Antarctica's landscape and wildlife are constantly evolving with the seasons. During the late spring months of October and November, the snow-covered terrain appears even more pristine, providing the perfect backdrop for penguins as they court and build their nests. By December and January, the arrival of whales marks the height of summer, coinciding with the hatching of penguin chicks. February and March offer the ultimate whale-watching experience when large pods are drawn to the rich feeding grounds of krill in Antarctic waters.

The Expedition Team will take every opportunity to explore the environment with you so you can get up close and personal with this frozen paradise. Spotting penguins from the ship is exhilarating but the experience becomes even more awe-inspiring when you're on land. As you cruise in smaller explorer boats or take part in optional kayaking excursions, you may even encounter seals or whales right next to you. Be sure to keep your camera ready at all times to capture these unforgettable moments.

To enrich your journey, the Expedition Team will share their expertise on a variety of fascinating topics, including the history of Antarctica, the biology of its unique wildlife and the intriguing science of glaciology.

Overnight: MS Fridtjof Nansen or MS Roald Amundsen

Meals included: Breakfast; Lunch; Dinner

Day 14 Antarctica

Be sure to talk to your expedition team onboard about booking optional excursions for your time in Antarctica.

Optional Activity: Overnight Camping

Duration: 10 hours

In the true style of the early explorers, venture out at night for a once in a lifetime experience camping in the Antarctic night. This activity features top of the line camping equipment that meets Antarctic standards for camping on snow. Imagine yourself sleeping under the Antarctic sky with little more than the thin wall of a tent separating you from the elements.

The adventure starts with a pre-camp briefing by the experienced staff who accompany you on the activity. If you have never pitched a tent before, this is your chance as you'll help set up camp after dinner. Afterwards, you can either go to bed or sit outside and marvel at the stillness while you listen to penguins in the distance. Depending on the landing site, you may take short walks to nearby viewpoints and visit penguin colonies in the bright Antarctic night. If you like, you can wake up early to watch the sunrise.

In the morning, you'll take down the camp and boats will pick you up for the return trip to the ship. Back onboard, enjoy a special breakfast and debrief the experience.

Please note:

- *This activity may have limited availability. In the event that space becomes limited, participants will be chosen via a lottery based lucky draw.*



23-DAY CRUISE & TOUR PACKAGE | ANTARCTICA EXPEDITION & SOUTH AMERICA EXPLORE

The Itinerary

Itinerary 1

- As an IAATO member, Hurtigruten adheres to all guidelines associated with onshore overnight stays in Antarctica. This means you leave nothing behind and remove all traces of your presence to protect wildlife and the fragile environment.

Optional Activity: Snowshoeing

Duration: 2 hours

Take a walk on the wild side with snowshoes as you climb hills, cross glittering white plains and explore untouched landscape. The experienced Expedition Team will guide you to places with awe-inspiring views and you might observe penguin colonies or even see whales swimming in the sea from above.

Optional Activity: Kayaking Adventure

Duration: 3 hours

Merge with nature on an exceptional Antarctic sea kayaking adventure. Explore nature and wildlife up-close as you kayak along awe-inspiring icebergs and glaciers. Paddle through crystal-clear water to spot seals, penguins and even whales. The Expedition Team will take you to stunning Antarctic areas with high chances of encountering wildlife.

Overnight: MS Fridtjof Nansen or MS Roald Amundsen
Meals included: Breakfast; Lunch; Dinner

Day 15 Antarctica

Overnight: MS Fridtjof Nansen or MS Roald Amundsen
Meals included: Breakfast; Lunch; Dinner

Day 16 Antarctica

Overnight: MS Fridtjof Nansen or MS Roald Amundsen
Meals included: Breakfast; Lunch; Dinner

Day 17 Antarctica

Overnight: MS Fridtjof Nansen or MS Roald Amundsen
Meals included: Breakfast; Lunch; Dinner

Day 18 Drake Passage

After having delved into the remote and wild continent of Antarctica over 5 days, it will be time to set sail homeward bound. By this point, both your head, heart and camera will be filled with lifelong memories.

Crossing back over the Drake Passage, spend the next couple of days replaying those memories. The Expedition Team will also be doing the same as they recap the journey's many experiences in the Science Centre.

Overnight: MS Fridtjof Nansen or MS Roald Amundsen
Meals included: Breakfast; Lunch; Dinner

Day 19 Drake Passage

Overnight: MS Fridtjof Nansen or MS Roald Amundsen
Meals included: Breakfast; Lunch; Dinner

Offer available for a limited time or until sold out. TRIP A DEAL PTY LTD: 50149240433

Updated: 17 Jul 2025 11:13:34

Have a question about this deal? We're here to help.
Call our friendly team on 1300 158 912



23-DAY CRUISE & TOUR PACKAGE | ANTARCTICA EXPEDITION & SOUTH AMERICA EXPLORE

The Itinerary

Itinerary 1

Day 20 Disembark Cruise - Ushuaia - Buenos Aires, Argentina

Meals included: None

Today marks the final day of your unforgettable Antarctic adventure as the ship returns to Ushuaia. Having ventured to the bottom of the world, you've explored the remote and extraordinary Seventh Continent.

Upon arrival in Ushuaia, you'll disembark and transfer to the airport for your flight back to Buenos Aires. Once you have arrived, you'll be transferred to the hotel for your final night in Argentina.

Overnight: Libertador Hotel Buenos Aires or similar

Meals included: Breakfast

Day 21 Buenos Aires, Argentina - Australia (or New Zealand)

Today, at the appropriate time, be transferred to the airport for your return flight to Australia (or New Zealand)

Meals included: Breakfast; In-Flight

Day 22 In Transit

Sit back, relax and reminisce on the memories created over the past weeks on your trip through South America and Antarctica.

Meals included: None

Day 23 Arrive Australia (or New Zealand)

Upon arrival in Australia (or New Zealand), make your own onward travel arrangements.

Offer available for a limited time or until sold out. TRIP A DEAL PTY LTD: 50149240433

Updated: 17 Jul 2025 11:13:34

Have a question about this deal? We're here to help.
Call our friendly team on 1300 158 912



23-DAY CRUISE & TOUR PACKAGE | ANTARCTICA EXPEDITION & SOUTH AMERICA EXPLORER

The Map

Itinerary 1



Offer available for a limited time or until sold out. TRIP A DEAL PTY LTD: 50149240433

Updated: 17 Jul 2025 11:13:34

Have a question about this deal? We're here to help.
Call our friendly team on 1300 158 912





23-DAY CRUISE & TOUR PACKAGE | ANTARCTICA EXPEDITION & SOUTH AMERICA EXPLORE

The Itinerary

Itinerary 2

Day 1 Australia (or New Zealand) - Lima, Peru

Today, you'll depart from Australia (or New Zealand) for Lima, Peru. Upon arrival in Lima, a representative will be waiting to transfer you to your hotel where you can enjoy the remainder of the day at leisure.

Please Note:

- Due to flight scheduling and availability, some departures may occur on Day 0. Affected customers must be at the airport the day before. Flight times will be indicated on your final documentation which you will receive prior to departure.
- Some customers may experience an extended layover in Santiago de Chile. Lounge passes may be purchased at your own expense.
- For travellers wishing to break up their journey, a Santiago stopover package is available for purchase. Please see the Important Information for further details.

Overnight: Hotel Jose Antonio Lima or similar

Meals included: In-Flight

Day 2 Lima City Tour

After breakfast, enjoy a guided city tour visiting key sites and landmarks in Lima.

The first stop is Huaca Pucllana, a huge archaeological site in Miraflores that is one of Lima's most popular districts. Huaca Pucllana was an important ceremonial and administrative centre built by the Lima culture, a pre-Incan indigenous coastal civilisation that formed between 200 CE and 700 CE. This sacred place was built from 7 staggered platforms surrounded by a plaza and large walls.

You'll then drive to the historic centre of Lima, a UNESCO World Heritage site to see the beautiful Plaza de Armas. Some of the most impressive colonial and Republican-era buildings surrounding the square include the Government Palace, the Cathedral of Lima, the Archbishop's Palace of Lima, the Municipal Palace and the Palace of the Union.

Afterwards, return to the hotel and enjoy the remainder of the day at leisure.

Overnight: Hotel Jose Antonio Lima or similar

Meals included: Breakfast

Day 3 Lima - Sacred Valley

This morning, you'll be transferred to the airport for your flight to Cusco.

Upon arrival, meet your tour representative and journey to the Sacred Valley. Along the way, you'll visit the charming Andean town of Chincheros which is known for its traditional textiles and agriculture. Enjoy cultural immersion with the Quechua community, experiencing a fascinating demonstration of traditional textile-making techniques. Interact with locals and gain insight into their way of life before continuing to your hotel.

After check-in, the rest of the day is yours to relax and explore at your leisure.

Overnight: San Augustin Monasterio de la Recoleta or similar

Meals included: Breakfast





23-DAY CRUISE & TOUR PACKAGE | ANTARCTICA EXPEDITION & SOUTH AMERICA EXPLORE

The Itinerary

Itinerary 2

Day 4 Sacred Valley - Aguas Calientes

The day begins as you transfer to Ollantaytambo train station where you'll board the expedition train to Aguas Calientes. Departing around 11:30 (exact times may vary), the 2-hour train ride offers stunning views of river canyons and rolling hills.

Aguas Calientes blends traditional charm with vibrant markets, shops, restaurants and hotels. The mostly pedestrianised town is surrounded by jungle-clad cliffs with the Urubamba River flowing through. Upon arrival, enjoy time to explore the colourful streets, browse local markets or unwind in the natural hot springs (additional expense).

Please note: For this section of the trip, due to luggage and space limitations on the train, you will only be able to bring an overnight bag to Machu Picchu. The remainder of your luggage will be transported to the hotel in Cusco and stored there at no additional cost. For those wanting to experience a section of the Inca Trail, you can opt to supplement your day's activities with the Express Inca Trail Trek (additional cost applies).

Optional Tour: Express Inca Trail Trek

Physical Ability: Active (please refer to Other Important Information for description)

You'll be picked up at approximately 06:00 to board the train for a 1.5-hour scenic train ride to Kilometre 104. From here, you will hike approximately 4 hours to the Inca site of Wiñay Wayna (Forever Young) which is approximately 2,680 metres above sea level. Built on a steep hillside overlooking the Urubamba River, this archaeological site has a series of 10 baths and numerous Inca buildings displaying Inca masonry. Wiñay Wayna was

discovered almost 40 years after Machu Picchu was first explored. Little is known about what Wiñay Wayna was originally built for, however there are theories it was built as a spiritual destination or resting place before reaching Machu Picchu. Afterwards, you'll continue to Inti Punku (the Puerta del Sol) where you'll have your first view of Machu Picchu. This site was believed to have once been the main entrance to Machu Picchu and was dedicated to Inti, the Inca Sun God. Please see current pricing in Important Information.

Please note: Due to the nature and duration of this tour, a moderate to active fitness level is required for participation in this supplementary trek. The route includes uneven surfaces, steep ascents and descents, a mix of stairs and dirt trails, and high-altitude conditions. The trek spans approximately 12 kilometres (6 – 8 hours) of walking including stops for photos, lunch (included) and exploring. If you have any concerns about your ability to complete this trek, we recommend consulting your GP for guidance.

Overnight: Hatun Inti Boutique Machupicchu or similar
Meals included: Breakfast

Day 5 Machu Picchu

Today will be an early start, but worth it! After an early breakfast, you'll be picked up from the hotel and taken to the gates of Machu Picchu where you'll enjoy one of the most breathtaking sunrises of your life (weather permitting).

You'll then be guided on a 2-hour tour of the most famous and spectacular sites of this extensive archaeological complex. These include the House of the Guardian, Intihuatana, Temple of the Sun, Sacred Plaza and other key Inca sites. As you walk around,



23-DAY CRUISE & TOUR PACKAGE | ANTARCTICA EXPEDITION & SOUTH AMERICA EXPLORE

The Itinerary

Itinerary 2

you'll have spectacular views across the agricultural terraces of Machu Picchu and across the surrounding mountains and plunging gorges.

Enjoy free time to explore more of this mysterious ancient city at leisure before meeting up with your guide for lunch (at your own expense).

Afterwards, take the bus down to Aguas Calientes and board the train back to Poroy. Upon arrival at the station, you'll be transferred to the hotel in Cusco for an evening at leisure.

Overnight: Hotel Jose Antonio Cusco or similar
Meals included: Breakfast

Day 6 Cusco City Tour

Today's adventure begins with a visit to the majestic Inca fortress of Sacsayhuamán, perched on a hill above Cusco. Here, you will witness some of the finest examples of Inca masonry and construction, including enormous boulders that were meticulously cut and perfectly fitted to form the walls.

You'll then explore the sanctuary of Qenqo, one of the most intriguing archaeological sites of the Inca civilisation. This enigmatic sanctuary, whose name in Quechua means "labyrinth" or "zigzag", offers a fascinating mix of history, spirituality and architecture. Continue onto the Tambomachay Complex to view Incan hydraulic engineering with a series of aqueducts, canals and waterfalls running through the terraced rocks.

Visit Koricancha, adjacent to the Church of Santo Domingo and the most sacred temple of the Inca Empire. Its walls were covered in gold while life-size statues of plants and animals were all made

of pure gold and silver. Sadly, this wealth was stripped away by the Spanish conquistadors, however, it remains a magnificent temple.

The tour concludes at the Cusco Cathedral where you'll admire gold and silver altars, masterpieces from the Cusco School of Art and subtle indigenous motifs. You'll return to the hotel to enjoy the remainder of the day at leisure.

Overnight: Hotel Jose Antonio Cusco or similar
Meals included: Breakfast

Day 7 Cusco Free Day

Enjoy the day at leisure exploring beautiful Cusco, known for its rich cultural heritage which seamlessly blends ancient Incan ruins with Spanish colonial architecture. Exploring Cusco on foot is one of the best ways to experience its charm and history. Alternatively, you can choose to participate in an optional activity.

Optional Activity: Half-Day Maras & Moray Tour

Get picked up from your Cusco hotel at approximately 09:00 for the 1.5-hour journey to Moray. Along the way, enjoy breathtaking views of the Andean landscape as well as passing golden wheat fields, charming traditional villages and majestic snow-capped mountains. Upon arrival in Moray, explore its fascinating amphitheatre-like terraced structures that are believed to have been an agricultural laboratory for the Incas. You'll then visit Maras to marvel at the ancient salt evaporation ponds carved into the mountainside. More than 3,000 pools collect salty spring water that evaporates to leave behind the

Offer available for a limited time or until sold out. TRIP A DEAL PTY LTD: 50149240433

Updated: 17 Jul 2025 11:13:34

Have a question about this deal? We're here to help.
Call our friendly team on 1300 158 912





23-DAY CRUISE & TOUR PACKAGE | ANTARCTICA EXPEDITION & SOUTH AMERICA EXPLORE

The Itinerary

Itinerary 2

renowned sal de Maras, a prized pink salt still harvested today. The view of these glistening ponds, resembling a blanket of snow or ice, is unforgettable. Please see current pricing in Important Information.

Optional Activity: Rainbow Mountain Trek

Physical Ability: Active (please refer to Other Important Information for description)

Be picked up between 05:30 and 06:00 to journey to Cusipata on a scenic 2-hour drive through the stunning Andes. The adventure continues with a 30-minute drive to Chilliwani, passing through picturesque locations such as Tintinko, Río Tigre and the Surina Mountain in Llacto. Along the way, enjoy the chance to see the region's diverse flora and fauna including llamas, alpacas and vicuñas in their natural habitat.

At the starting point of the trek, you'll set off on a 1.5-hour hike to Rainbow Mountain. The trail offers breathtaking views of the Red Valley, Nevado Ausangate and serene lagoons. Upon reaching the viewpoint, you'll marvel at the multicoloured layers of the mountain. Your guide will share insights into the geological processes behind its vivid hues while you enjoy hot tea and snacks. Afterwards, you'll begin your descent back to the starting point where your vehicle will be waiting to take you back to Cusco, arriving at approximately 18:00. Please see current pricing in Important Information.

Optional Activity: Folklore Dinner & Show

In the central Plaza de Armas of Cusco, you'll head to Tunupa restaurant for a fabulous buffet dinner of meat, fish, vegetables and desserts. Afterwards, enjoy a traditional dance and get involved with folk, traditional and classical music played on Andean instruments such as Quena, charango, flute and zampoña. If you wish, you can also share the dance floor with the dancers! Please see current pricing in Important Information.

Overnight: Hotel Jose Antonio Cusco or similar

Meals included: Breakfast

Day 8 Cusco, Peru - Rio de Janeiro, Brazil

Today, at the appropriate time, you'll be transferred to the airport in Cusco for your flight to Rio de Janeiro, Brazil. Upon arrival, you'll be met by a tour representative and transferred to the hotel.

Rio de Janeiro, often called 'Cidade Maravilhosa' meaning The Marvellous City, is world-renowned for its breathtaking landscapes and crystal clear seas. It's features some of the Brazil's most famous tourist attractions such as Pão de Açúcar (Sugarloaf Mountain), Corcovado Mountain (where Christ the Redeemer Statue is located) and the iconic beaches of Copacabana and Ipanema. This city is full of energy and rhythm while the locals are known for their carefree spirit and charm.

Overnight: Novotel Rio de Janeiro or similar

Meals included: Breakfast



23-DAY CRUISE & TOUR PACKAGE | ANTARCTICA EXPEDITION & SOUTH AMERICA EXPLORE

The Itinerary

Itinerary 2

Day 9 Christ the Redeemer

Today, you will be picked up from your hotel to get up close to the iconic Christ the Redeemer statue.

The journey begins with a scenic drive through a lush tropical forest, leading to the summit of Mount Corcovado. Standing 704 meters above the city of Rio, the statue is the city's most recognisable landmark and a cultural symbol of Brazil. It's also one of the New Seven Wonders of the World along with Machu Picchu, the Great Wall of China and the Roman Colosseum.

Following this, you'll visit the remarkable Selarón Stairs, a vibrant mosaic masterpiece created by Chilean artist Jorge Selarón. Stretching 125 meters, these colourful steps serve as a tribute to Rio de Janeiro and are a source of inspiration for the local community.

After the tour, transfer back to the hotel and enjoy the remainder of the day at leisure.

Please note: The tour operation is subject to changes for the festive season.

Overnight: Novotel Rio de Janeiro or similar
Meals included: Breakfast

Day 10 Rio de Janeiro Free Day

Today, enjoy a free day to explore at your leisure.

Overnight: Novotel Rio de Janeiro or similar
Meals included: Breakfast

Day 11 Rio de Janeiro Free Day

Today, enjoy another free day to explore this vibrant city at your own pace.

Overnight: Novotel Rio de Janeiro or similar
Meals included: Breakfast

Day 12 Rio de Janeiro - Iguazú Falls Tour (Brazilian-Side) - Puerto Iguazú

After breakfast, you'll be transferred to the airport for a 2-hour flight to Foz do Iguaçu, a small town near Iguazú Falls.

Recognised as a UNESCO World Heritage Site, Iguazú Falls boasts around 275 individual waterfalls and is celebrated for its outstanding natural beauty and ecological importance. Join a half-day guided tour of the Brazilian side of the Iguazú National Park where you'll visit iconic landmarks such as Devil's Throat waterfall. The stunning scenery is often complemented by the nearly constant rainbows formed by the mist from the falls.

Afterwards, enjoy lunch at one of the park's restaurants (not included) before transferring to your hotel in Puerto Iguazú on the Argentinian side of the park.

Overnight: Falls Iguazu Hotel & Spa or similar
Meals included: Breakfast





23-DAY CRUISE & TOUR PACKAGE | ANTARCTICA EXPEDITION & SOUTH AMERICA EXPLORE

The Itinerary

Itinerary 2

Day 13 Iguazú Falls (Argentinian-Side)

After breakfast, meet your guide to explore the Argentinian side of Iguazú National Park. The park features a network of trails and elevated walkways that protecting the natural habitat of the local wildlife. These raised platforms offer breathtaking views of the falls and surrounding scenery. Enjoy lunch at one of the park's restaurants (not included) or bring your packed lunch from Puerto Iguazú to enjoy outdoors.

In the afternoon, return to your hotel in Puerto Iguazú.

Optional Activity: The Great Adventure Tour

Led by experienced guides, this unique tour starts from the Sendero Yacaratía jungle trail with special transportation that allows a panoramic view of the magical surroundings. A short way into the jungle, follow stairs up to a floating platform where a motorboat waits to take you through the Canyon of the Iguazú River. After enjoying the view from San Martin Island, you will sail to Tres Mosqueteros (Three Musketeers) waterfall, where the Brazilian and Argentinean sides and the Devil's Throat can be appreciated. From there, sail along the island's shore until you reach the face of the San Martin waterfall, an unforgettable experience. This activity is bookable on tour. Please see current pricing in Important Information.

Please note:

- *The Great Adventure Tour will take place during the scheduled tour of the Argentinian side of the falls mentioned in the itinerary above. Customers who purchase the Great Adventure Tour will split from the main group partway through the scheduled tour to take part in this optional tour.*

• *This tour is not suitable for the following:*

- *Children under 12 years old*
- *Pregnant women*
- *People with osteoporosis, neck, back conditions or surgery*
- *People with heart conditions or surgery*
- *People with COPD or neurological conditions or surgery*
- *People with any physical, cognitive or/and sensorial disability unable to react in a nautical emergency*

Overnight: Falls Iguazu Hotel & Spa or similar

Meals included: Breakfast

Day 14 Puerto Iguazu, Argentina - Buenos Aires

After breakfast at the hotel, you'll be transferred to the airport for your flight to Buenos Aires, Argentina. Upon arrival, you will be met and transferred to your hotel where you can enjoy the remainder of the day at leisure. Your centrally located hotel provides easy access to nearby restaurants, entertainment and local attractions, making it the perfect base to explore this vibrant city.

Overnight: Libertador Hotel Buenos Aires or similar

Meals included: Breakfast





23-DAY CRUISE & TOUR PACKAGE | ANTARCTICA EXPEDITION & SOUTH AMERICA EXPLORE

The Itinerary

Itinerary 2

Day 15 Buenos Aires City Tour & Evening Tango Show

After breakfast, embark on a city tour of Buenos Aires to discover the charm of this vibrant metropolis. Begin at Plaza de Mayo, a key site in Argentina's political history, before heading to one of the city's oldest neighbourhoods. San Telmo is known for its cobblestone streets, antique shops and picturesque architecture. You'll then explore the colourful neighbourhood of La Boca, famous for its tango culture and vibrant Caminito Street.

Visit important landmarks such as La Casa Rosada (the Presidential Palace, known as The Pink House), the Cabildo (the colonial town hall), and the Neoclassical Metropolitan Cathedral where Argentina's founding father is laid to rest. Finally, admire the ornate mausoleums at the celebrated Recoleta Cemetery before stopping at Eva Peron's grave, one of the country's most recognisable icons.

After the city tour, return to your hotel and enjoy the afternoon at leisure.

In the evening, you'll be transferred to Cafe de los Angelitos for a 3-course dinner and an unforgettable tango show. Café de Los Angelitos is a leading venue for tango in the city's most elegant setting, preserving the luxury and distinction of a bygone era. Enjoy performances by tango orchestras, folk music, dancers and singers.

Overnight: Libertador Hotel Buenos Aires or similar
Meals included: Breakfast; Dinner

Day 16 Hurtigruten Expeditions Program Commences

Today marks the start of your Hurtigruten Expedition adventure as you transfer to a new hotel and enjoy the day at leisure.

Please note: Hurtigruten Expeditions requires all guests to complete a Medical Screening Form for remote destinations, including Antarctica. This form is divided into two sections: Section A (completed by you) and Section B (completed by your doctor). The forms must be submitted for review 4 to 8 weeks prior to departure. If the required information is missing, you may need to resubmit it. Failure to complete the forms may result in being unable to board the cruise.

Overnight: Hotel NH Buenos Aires Tango or similar
Meals included: Breakfast

Day 17 Buenos Aires - Ushuaia, Argentina - Board Hurtigruten Expeditions Ship

This morning, you'll be transferred to the airport for your early flight to Ushuaia, Chile.

In Ushuaia, a state-of-the-art hybrid-powered Hurtigruten expedition ship awaits. Once onboard, you'll attend a mandatory health and safety briefing before enjoying a welcome dinner hosted by the Expedition Team. Afterwards, take some time to explore the ship.

Please note: There are 2 different expedition ships used during the Antarctica season. For specific details about which ship operates during your departure date, refer to the Cruise section in the Important Information.



23-DAY CRUISE & TOUR PACKAGE | ANTARCTICA EXPEDITION & SOUTH AMERICA EXPLORE

The Itinerary

Itinerary 2

Overnight: MS Fridtjof Nansen or MS Roald Amundsen

Meals included: Breakfast; Lunch; Dinner

Day 18 Drake Passage

The ship will cross the infamous Drake Passage, named after English sea captain Sir Francis Drake who stumbled upon it in 1578.

With no landmass at this latitude, the waters can be turbulent, but there's no need to worry because Hurtigruten's ultra-modern expedition ships can easily handle the "Drake Shake".

The 2-day journey across the 1,000 kilometre-wide passage gives you time to prepare for your Antarctic adventure. The Expedition Team will begin their lecture series in the onboard Science Centre, sharing their extensive experience and teaching you how to make your visit safe and sustainable. You'll also learn how to comply with IAATO guidelines including wearing sterilised rubber boots when ashore and vacuuming your clothing to remove foreign contaminants. During this time, you can participate in exciting Citizen Science projects like whale counting and cloud observation which contribute to live research.

While onboard, you can also take advantage of the amenities by working out in the gym, relaxing in the Wellness Area or enjoying meals at the exquisite restaurants. Don't forget to head out on deck to look for the first icebergs and spot wildlife like whales and dolphins.

Overnight: MS Fridtjof Nansen or MS Roald Amundsen

Meals included: Breakfast; Lunch; Dinner

Day 19 Drake Passage

Today, you'll continue your journey across the legendary Drake Passage. With each passing hour, the excitement builds as you draw closer to the icy wonderland of Antarctica.

Overnight: MS Fridtjof Nansen or MS Roald Amundsen

Meals included: Breakfast; Lunch; Dinner

Day 20 Antarctica

For the next few days, you'll be surrounded by vast icy waters, towering glaciers and colossal icebergs that seem to stretch into infinity. The sheer scale and beauty of the landscape are almost otherworldly, and at times, you may find yourself simply taking a moment to absorb it all. You'll find that the silence of this frozen world will soon be interrupted by the excited shouts of fellow passengers as penguins, seals and whales make their appearances.

Antarctica's landscape and wildlife are constantly evolving with the seasons. During the late spring months of October and November, the snow-covered terrain appears even more pristine, providing the perfect backdrop for penguins as they court and build their nests. By December and January, the arrival of whales marks the height of summer, coinciding with the hatching of penguin chicks. February and March offer the ultimate whale-watching experience when large pods are drawn to the rich feeding grounds of krill in Antarctic waters.

The Expedition Team will take every opportunity to explore the environment with you so you can get up close and personal with this frozen paradise. Spotting penguins from the ship is

Offer available for a limited time or until sold out. TRIP A DEAL PTY LTD: 50149240433

Updated: 17 Jul 2025 11:13:34

Have a question about this deal? We're here to help.
Call our friendly team on 1300 158 912



23-DAY CRUISE & TOUR PACKAGE | ANTARCTICA EXPEDITION & SOUTH AMERICA EXPLORE

The Itinerary

Itinerary 2

exhilarating but the experience becomes even more awe-inspiring when you're on land. As you cruise in smaller explorer boats or take part in optional kayaking excursions, you may even encounter seals or whales right next to you. Be sure to keep your camera ready at all times to capture these unforgettable moments.

To enrich your journey, the Expedition Team will share their expertise on a variety of fascinating topics, including the history of Antarctica, the biology of its unique wildlife and the intriguing science of glaciology.

Overnight: MS Fridtjof Nansen or MS Roald Amundsen

Meals included: Breakfast; Lunch; Dinner

Day 21 Antarctica

Be sure to talk to your expedition team onboard about booking optional excursions for your time in Antarctica.

Optional Activity: Overnight Camping

Duration: 10 hours

In the true style of the early explorers, venture out at night for a once in a lifetime experience camping in the Antarctic night. This activity features top of the line camping equipment that meets Antarctic standards for camping on snow. Imagine yourself sleeping under the Antarctic sky with little more than the thin wall of a tent separating you from the elements.

The adventure starts with a pre-camp briefing by the experienced staff who accompany you on the activity. If you have never pitched a tent before, this is your chance as you'll help set up

camp after dinner. Afterwards, you can either go to bed or sit outside and marvel at the stillness while you listen to penguins in the distance. Depending on the landing site, you may take short walks to nearby viewpoints and visit penguin colonies in the bright Antarctic night. If you like, you can wake up early to watch the sunrise.

In the morning, you'll take down the camp and boats will pick you up for the return trip to the ship. Back onboard, enjoy a special breakfast and debrief the experience.

Please note:

- *This activity may have limited availability. In the event that space becomes limited, participants will be chosen via a lottery based lucky draw.*
- *As an IAATO member, Hurtigruten adheres to all guidelines associated with onshore overnight stays in Antarctica. This means you leave nothing behind and remove all traces of your presence to protect wildlife and the fragile environment.*

Optional Activity: Snowshoeing

Duration: 2 hours

Take a walk on the wild side with snowshoes as you climb hills, cross glittering white plains and explore untouched landscape. The experienced Expedition Team will guide you to places with awe-inspiring views and you might observe penguin colonies or even see whales swimming in the sea from above.

Optional Activity: Kayaking Adventure

Duration: 3 hours





23-DAY CRUISE & TOUR PACKAGE | ANTARCTICA EXPEDITION & SOUTH AMERICA EXPLORE

The Itinerary

Itinerary 2

Merge with nature on an exceptional Antarctic sea kayaking adventure. Explore nature and wildlife up-close as you kayak along awe-inspiring icebergs and glaciers. Paddle through crystal-clear water to spot seals, penguins and even whales. The Expedition Team will take you to stunning Antarctic areas with high chances of encountering wildlife.

Overnight: MS Fridtjof Nansen or MS Roald Amundsen
Meals included: Breakfast; Lunch; Dinner

Day 22 Antarctica

Overnight: MS Fridtjof Nansen or MS Roald Amundsen
Meals included: Breakfast; Lunch; Dinner

Day 23 Antarctica

Overnight: MS Fridtjof Nansen or MS Roald Amundsen
Meals included: Breakfast; Lunch; Dinner

Day 24 Antarctica

Overnight: MS Fridtjof Nansen or MS Roald Amundsen
Meals included: Breakfast; Lunch; Dinner

Day 25 Drake Passage

After having delved into the remote and wild continent of Antarctica over 5 days, it will be time to set sail homeward bound. By this point, both your head, heart and camera will be filled with lifelong memories.

Crossing back over the Drake Passage, spend the next couple of days replaying those memories. The Expedition Team will also be doing the same as they recap the journey's many experiences in the Science Centre.

Overnight: MS Fridtjof Nansen or MS Roald Amundsen
Meals included: Breakfast; Lunch; Dinner

Day 26 Drake Passage

Overnight: MS Fridtjof Nansen or MS Roald Amundsen
Meals included: Breakfast; Lunch; Dinner

Day 27 Disembark Cruise - Ushuaia - Buenos Aires, Argentina

Today marks the final day of your unforgettable Antarctic adventure as the ship returns to Ushuaia. Having ventured to the bottom of the world, you've explored the remote and extraordinary Seventh Continent.

Upon arrival in Ushuaia, you'll disembark and transfer to the airport for your flight back to Buenos Aires. Once you have arrived, you'll be transferred to the hotel for your final night in Argentina.





23-DAY CRUISE & TOUR PACKAGE | ANTARCTICA EXPEDITION & SOUTH AMERICA EXPLORE

The Itinerary

Itinerary 2

Overnight: Libertador Hotel Buenos Aires or similar

Meals included: Breakfast

Day 28 Buenos Aires, Argentina - Australia (or New Zealand)

Today, at the appropriate time, you'll be transferred to the airport for your return flight to Australia (or New Zealand)

Meals included: Breakfast; In-Flight

Day 29 In Transit

Sit back, relax and reminisce on the memories created over the past weeks on your trip through South America and Antarctica.

Meals included: None

Day 30 Arrive Australia (of New Zealand)

Upon arrival in Australia (or New Zealand), make your own onward travel arrangements.

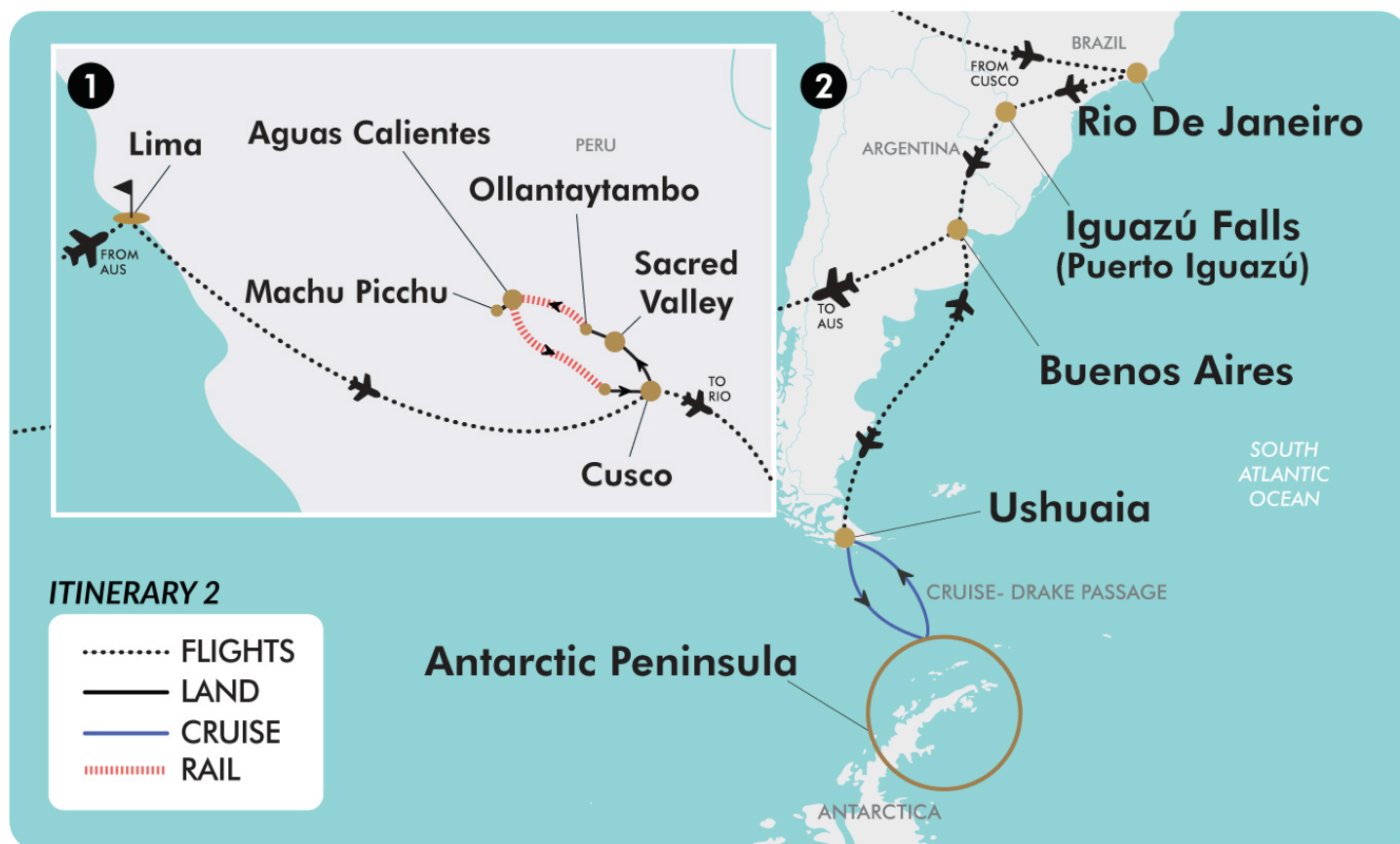
Meals included: None



23-DAY CRUISE & TOUR PACKAGE | ANTARCTICA EXPEDITION & SOUTH AMERICA EXPLORER

The Map

Itinerary 2



Offer available for a limited time or until sold out. TRIP A DEAL PTY LTD: 50149240433

Updated: 17 Jul 2025 11:13:34

Have a question about this deal? We're here to help.
Call our friendly team on 1300 158 912



23-DAY CRUISE & TOUR PACKAGE | ANTARCTICA EXPEDITION & SOUTH AMERICA EXPLORE

Tour Inclusions

HIGHLIGHTS

- Experience the best of Antarctica*, Brazil and Argentina
 - Cruise aboard a modern, state-of-the-art expedition vessel
 - Discover Rio de Janeiro's iconic landmarks with time at leisure
 - Admire the majestic Christ the Redeemer statue in Rio de Janeiro
 - Witness awe-inspiring Iguazú Falls, the world's largest waterfall system
 - Explore the stunning flora and fauna of Iguazú National Park
 - Take a guided tour of Buenos Aires to uncover its hidden gems
 - Visit the colourful San Telmo and La Boca districts in Buenos Aires
 - Enjoy a 3-course dinner and tango show in Buenos Aires
 - Witness extraordinary wildlife including whales, playful orcas and seals
 - Look out for soaring Antarctic seabirds, penguin colonies and more
 - Cross the legendary Drake Passage where the Atlantic meets the Pacific
 - Set foot on the Great White Continent with guided Zodiac landings
 - Deepen your knowledge with lectures from the onboard Expedition Team
- *Medical clearance is required prior to boarding for all expedition cruises to Antarctica.

FLIGHTS

- Return international full-service flights (economy class), surcharges may apply
- All internal flights (economy class) within South America

CRUISE

- 10-night all-inclusive expedition cruise of Antarctica with Hurtigruten
- Cruise aboard Hurtigruten's MS Fridtjof Nansen or MS Roald Amundsen
- Multiple small group Zodiac landings and activities at spectacular locations
- Breakfast, lunch and dinner in Aune and Fredheim onboard restaurants
- Enjoy coffee, tea and soft drinks throughout the cruise
- Enjoy an evening alcoholic beverage in the Pool Bar or Explorer Lounge
- Drinks available throughout the day and evening at no additional cost (excluding premium)
- Complimentary Wi-Fi onboard
- Gratuities included

Onboard Activities

- In-depth lectures and discussions by the expert Expedition Team
- Use of the Science Centre, extensive library and geological equipment
- Assist with ongoing scientific research on the Citizen Science Program
- Photography tips from the onboard professional photographer
- Enjoy the ships hot tubs, infinity pool, panoramic sauna, gyms and running track
- Informal gatherings with the crew for daily briefings

Landing Activities

- Escorted landings on small expedition boats
- Loan of boots, trekking poles and all equipment for activities
- Complimentary wind and water-resistant expedition jacket (or other



23-DAY CRUISE & TOUR PACKAGE | ANTARCTICA EXPEDITION & SOUTH AMERICA EXPLORE

Tour Inclusions

Hurtigruten kit)
Expedition photographers on hand to assist you
ACCOMMODATION
10 nights of 4 & 5-star hotel accommodation
DINING
41 meals including all while cruising
ESSENTIALS
Airline and cruises taxes and surcharges included
English-speaking tour guides
TRANSPORT
Land transportation by private air-conditioned vehicles
TRANSFERS
All transfers included

ITINERARY 2: PRE-TOUR PERU EXTENSION

Discover the wonders of the Inca Empire
Visit Cusco, the Sacred Valley and Machu Picchu
Experience the highlights of Lima on a guided city tour
See the UNESCO-listed Huaca Pucllana, Plaza Mayor and more
Marvel at Koricancha, also known as the Temple of the Sun
Take a guided tour through Cusco, the historic capital of the Inca Empire
Witness the stunning beauty of the Andes Mountains
Stroll along cobbled streets and admire the terracotta rooftops of Cusco
One-way internal flight from Lima to Cusco
One-way international flight from Cusco, Peru to Rio de Janeiro, Brazil
7 additional nights of 4-star accommodation in Peru
7 additional meals including daily breakfast
Return train tickets to Aguas Calientes aboard the Expedition Train
Return bus ticket from Aguas Calientes to Machu Picchu
All transfers included

Important Information

**Please note: All information provided in this brochure is subject to both change and availability. Prior to purchase please check the current deal for up-to-date information. If you have already purchased this deal, the terms and conditions on your Purchase Confirmation apply and take precedence over the information in this brochure.*

Booking Information

After purchase, you will receive a receipt and a Purchase Confirmation, directing you to an online Passenger Information Form. You must complete the Passenger Information Form within 72 hours of purchase.

Any special requests, preferences and optional extras MUST be clearly stated in your Passenger Information Form. Any change requested after submitting your Passenger Information Form cannot be guaranteed, is strictly subject to availability and will incur surcharges as outlined in the Schedule of Fees below.

Please note: All countries and territories have different entry requirements in relation to vaccinations, quarantine/isolation periods and travel restrictions. Due to the evolving nature, we would ask all of our customers to monitor, meet and adhere to the specific requirements of their intended destination(s) in the lead-up to and immediately before travel, as well as any requirements post-travel upon their return.

Our Policies

Cancellation & Refund Policy

By placing a booking with us, you acknowledge the following important information:

- **we act as your booking agent ;**

TripADeal is a booking services provider, and curates the Travel Offers available on our website. We act as your booking agent, and we receive payment for the Booking Services as part of the booking price, however, we do not provide any of the Travel Services (flights, accommodation, tours or other products or services) included in your booking – the Travel Services are provided by a number of third party Travel Suppliers.

- **each booking is unique ;** our Travel Offers are made up of a variety of different components and are, during the booking process, uniquely tailored to suit your requirements, for example, departure dates and ports, flight and room upgrades, tour inclusions, etc.

- **changes/modifications to your booking may not be possible ;** once your booking has been made, changes or modifications may not be possible, and where possible, may incur a fee. It is important to ensure that the information you provide during the booking process is accurate and up to date, and that you read the Travel Offer carefully before placing your order.

- **Travel Offers are a package ;** our Travel Offers have been curated into package offerings and must be used as a package – individual components cannot be used independently of the full package offering.

- **our Travel Offers are generally non-refundable ;** in order to provide great value Travel Offers, we work with a variety of Travel Suppliers to find the best deals – this often means the Travel Suppliers' offerings are non-refundable to ensure the best price. We recommend that you obtain travel insurance as soon as you make a booking with us.

To read more about our Cancellation and Refund Policy, please click [here](#).

General Terms & Conditions

By placing your booking with us, you acknowledge and agree to our [Terms & Conditions](#), [Privacy Policy](#) and [Cancellation Policy](#).

Offer Essentials

This Travel Offer is valid for travel on selected dates until the 19th February 2026.

Minimum group size 20, maximum group size 30 per vehicle.

This Travel Offer is priced per person based on a twin share.

Departure Dates & Surcharges

See checkout for live dates and availability.

Single Traveller Supplement

For solo travellers a select number of solo cabins are available for these departures. Please see the cart for pricing details and availability.

Please note: Accommodation for single customers who are travelling on a tour or cruise package may be in a single room, depending on availability.

Child Policy

- No child discounts are offered. The full price applies to all children travelling with their parents.
- Valid for children 12 years old and over.

Please note: Children must be accompanied by a responsible adult 18 years old and over to travel. No unaccompanied minors are allowed.

Flights

Departure Cities

Sydney, Melbourne*, Brisbane*, Adelaide*, Perth*, Auckland*

Departure City Surcharges

- Melbourne: \$200 per person
- Brisbane, Adelaide & Auckland: \$600 per person
- Perth: \$700 per person

International Flight(s)

- Cabin Class: Economy Class

Please note: We cannot accommodate one-way flights. Travellers must take all included flights within the package, and any flights intentionally forfeited will result in later flights being subject to cancellation.

International & Domestic Flight(s) Used (Internal South America)

- Cabin Class: Economy Class
- Itinerary 1 Route: Rio to Iguazu, Iguazu to Buenos Aires, Buenos Aires to Ushuaia, Ushuaia to Buenos Aires
- Itinerary 2 Route: Lima to Cusco, Cusco to Rio de Janeiro, Rio de Janeiro to Iguazu, Iguazu to Buenos Aires, Buenos Aires to Ushuaia, Ushuaia to Buenos Aires

Important Information

Domestic & South America Internal Flights

Baggage allowance per person:

- 1 x 7kg of checked baggage
- 1 x 23kg of carry on baggage

Please note: Your internal flight/s with Aerolineas will have a checked luggage limit of 15 kilograms per person. Unfortunately, TripADeal is unable to increase this amount during the booking process, so we recommend all travellers keep this in mind when packing for their holiday, regardless of the limits allowed on your long-haul international sectors. Any excess baggage fees you may incur at the airport will be the responsibility of the traveller at the time of check-in and paid directly to the airline

Arrive Early & Stay Behind Options

Arrive Early

Rio de Janeiro (Itinerary 1 only) - From \$300 per person, subject to availability.
Lima (Itinerary 2 only) - From \$300 per person, subject to availability.

Stay Behind

Buenos Aires - From \$300 per person, subject to availability.

Please note:

- *This fee does not include extra nights' accommodation, meals or airport transfers.*
- *Flight booking changes or cancellations after air tickets have been issued are not guaranteed and may incur additional fees and fare difference, subject to the airline cancellation and change policies.*
- *Flight changes are subject to availability at the time of booking.*
- *A high-season Arrive Early or Stay Behind can be purchased for an additional charge, subject to availability. For pricing, please refer to the cart.*
- *You can arrive early, up to 60 days before your package's start date, and/or stay behind until 60 days after your package's end date. Should you wish to arrive earlier or stay behind for more than 60 days, please contact us to request availability. Additional costs may apply.*

- *High season surcharges apply to flights departing between the below date ranges:*

16th June 2025 - 20th July 2025
15th September 2025 - 12th October 2025
1st December 2025 - 19th December 2025
20th December 2025 - 4th January 2026
5th January 2026 - 31st January 2026
3rd April 2026 - 20th April 2026
26th June 2026 - 17th July 2026
18th September 2026 - 9th October 2026
12th December 2026 - 18th December 2026
19th December 2026 - 3rd January 2027
4th January 2027 - 26th January 2027

Stopover Packages

- Santiago, Chile
- Includes:
- 2, 3 or 5 nights in 4-star accommodation
 - Daily breakfast
 - Return airport transfers
- For pricing, please refer to the payment cart at checkout.

Please note:

- *When a pre and post-tour stopover is chosen, the same stopover location must be chosen each way, due to the airline used.*
- *When selecting an Arrive Early or Stay Behind in conjunction with a Stopover Package, the stopover will take place after the departure date you select for your Arrive Early or Stay Behind.*
- *Stopover packages are subject to availability.*
- *In the event that a purchased stopover package and a purchased preferred airline upgrade are not compatible, you will have the option to receive a refund for the preferred airline upgrade or be offered an alternative stopover city option, e.g if you choose to fly with Singapore Airlines you cannot stopover in Dubai.*
- *Blackout dates apply to flights departing between the below date ranges:*

22nd December 2025 - 2nd January 2026

Flight Class Upgrades

Business Class: For pricing, please refer to the payment cart at checkout.

Please note:

- *Flight upgrades are subject to availability and pricing changes (if we cannot fulfil your request, the upgrade cost will be refunded).*
- *On any upgrade purchase, short-haul flights and domestic flight sectors are not guaranteed, subject to aircraft configuration.*

Missed Flights

If you fail to arrive for your outbound flight, you risk all flight and land arrangements in your destination being automatically cancelled by the airlines and land operator, respectively. Additional fees may apply to reinstate these services. If you miss your flight for whatever reason, please contact us as soon as possible to make arrangements.

Cruise

Medical Disclaimer:

Travel to Antarctica is physically demanding, and our Travel Suppliers require all guests to obtain medical clearance before departure even if you don't intend to disembark at Antarctica. This involves completing a medical form and may require medical clearance from a doctor, which could incur additional costs. Any guests who fail to provide the necessary medical documentation will be denied boarding.

Hurtigruten's MS Fridtjof Nansen or MS Roald Amundsen

Featuring Hurtigruten's revolutionary battery hybrid powered propulsion system, 'MS Fridtjof Nansen' is a near identical twin to her sister ship 'MS Roald Amundsen'. Combining state-of-the-art technology and premium onboard experience with Hurtigruten's 125 years of experience and unparalleled destinations, the Norwegian-built ship introduces the next generation of adventure travel.

Facilities Onboard

Cabins & Public Areas

The stunning scenery will be reflected in a rich and comfortable interior design.

Important Information

Scandinavian materials from nature, such as granite, oak, birch and wool will be used to create relaxed and stylish cabins and public areas. All cabins are outside and 50% with a private balcony.

Science Centre

The core of the onboard experience is the Science Centre, an edutainment venue where guests and crew meet to create a deeper understanding of the areas we explore. Science Centre will also be the onboard HQ for the Expedition Team.

Restaurants

Three onboard restaurants will host a variety of dining options, with menus drawn from rich Norwegian and Nordic traditions, as well as international cuisine and local inspiration. Whether enjoying your meal at Aune Main Dining, Fredheim – the informal international meeting place, or the specialty restaurant Lindstrøm, you will indulge in low-key yet refined, modern Norwegian Nordic cooking – where our honest and delicious cuisine reflects our destinations.

Everything You Need For An Expedition Cruise

Each expedition voyage is accompanied by a hand-picked team of specialists and modern-day explorers. Highly experienced, passionate and knowledgeable, the Expedition Team will be your guides and guardians on your voyage of exploration, instructing you on safety, sustainability and science. 'MS Fridtjof Nansen' and 'MS Roald Amundsen' will feature a variety of custom-built expedition equipment including kayaks, a fleet of Blueye underwater drones and Expedition Boats for safe landings in remote areas.

Onboard Currency

EUR

Cabins/Staterooms

RR - Polar Outside

The Polar Outside cabins are primarily on the middle decks. Most are 20 square

metres with windows and flexible sleeping arrangements, as well as a TV and a bathroom with a shower. Larger cabins on lower and middle decks are 19 - 23 metres squared with flexible sleeping arrangements, a double bed that can be divided into two single beds (some with a sofa bed) and a TV.

XT/XTD - Arctic Superior Cabins

Arctic Superior cabins are comfortable and roomy, and have a balcony. These are high-deck cabins with a balcony. The spacious cabins are different sizes with flexible sleeping arrangements (some with sofa bed), TV, kettle, tea and coffee.

ME - Expedition Suite with Balcony

The suites are spacious cabins with a fantastic layout, including expansive windows and a balcony. The suites feature flexible sleeping arrangements with a comfortable sofa and sitting areas, as well as a TV and a bathroom with a shower. Expedition Suites are exclusively on the upper and middle decks. Expedition Suites include a bathrobe, an espresso maker and more. An exciting welcome gift awaits all suite guests in their cabin.

Please note:

- *Cruise timetables are subject to change.*
- *Some cruise cabins may have restricted views, based on availability.*
- *Cruise cabins booked on a guarantee basis and are assigned by the cruise line prior to departure. Your cruise cabin number will be reflected in your final documents.*

Cruise Arrival & Departure Times

Please keep in mind that the provided cruise arrival and departure times are an approximate and will be finalised upon receipt of your cruise tickets.

Boarding Requirements

Please note: Hurtigruten Expeditions requires all guests to complete a Medical Screening Form for remote destinations, including Antarctica. This form is divided into two sections: Section A (completed by you) and Section B (completed by your doctor). The

forms must be submitted for review 4 to 8 weeks prior to departure. If the required information is missing, you may need to resubmit it. Failure to complete the forms may result in being unable to board the cruise.

Accommodation

Accommodation Used: Itinerary 1 & 2

4-Star Properties (Self-Rated)

- Rio de Janeiro, Brazil: Novotel Rio de Janeiro or similar
- Buenos Aires, Argentina: Libertador Hotel Buenos Aires or similar
- Buenos Aires, Argentina: Hotel NH Buenos Aires Tango or similar

5-Star Properties (Self-Rated)

- Iguazu Falls, Argentina: Falls Iguazu Hotel & Spa

Accommodation Used: Itinerary 2 Only

4-Star Properties (Self-Rated)

- Lima, Peru: Hotel Jose Antonio or similar
- Sacred Valley, Peru: San Augustin Monasterio de la Recoleta or similar
- Aguas Calientes, Peru: Hatun Inti Boutique Machupicchu or similar
- Cusco, Peru: Hotel Jose Antonio Cusco or similar

Please note: Accommodation/rooms offered are based on a lead-in room type and are subject to availability based on seasonality. In the instance a property is not available, a similar standard of accommodation will be provided. Properties will be confirmed and included in your travel pack, which you will receive 4-6 weeks before travel.

Extra Nights

Not available.

Please note: If you are interested in booking additional nights of accommodation pre or post-tour, please wait until you receive your travel documentation approximately 4-6 weeks before departure for the confirmed list of hotels. If booking your own additional accommodation directly with the hotel, please be aware that you may be required to change rooms at the start/end of your tour.

Important Information

Maximum Room Capacity

2 people.

Triple Share

Not available.

Bedding Configuration

Twin or double (subject to availability).

Optional Tours/activities

Itinerary 2 Only

- Day 4: Express Inca Trail Trek - \$620 AUD per person
- Day 7: Maras & Moray Tour - \$90 AUD per person
- Day 7: Rainbow Mountain Trek - \$190 AUD per person
- Day 7: Folklore Show & Dinner - \$50 AUD per person

Please note:

- *The optional tours listed above must be purchased on checkout or over the phone before submitting your passenger information form (subject to availability).*
- *Some tours or shore excursions require minimum numbers to operate.*
- *Shore excursions can be booked/reserved directly with the cruise line before travel (subject to availability)*
- *Shore excursions can also be booked whilst onboard (subject to availability).*
- *Shore excursion programmes and itineraries may vary depending on local conditions and/or any unforeseen events concerning the timing on the day of the tour. Some excursions are very popular, and therefore availability cannot always be guaranteed, it is advisable to book in advance to avoid disappointment.*

Exclusions

- Visa fees and requirements
- Domestic transfers and flights not stated in the deal offer
- Meals/beverages not stated in the deal offer
- Optional gratuities/tipping
- Optional activities/tours
- Personal expenses
- Travel insurance

- Any costs associated with an interruption to your tour as a result of an airline schedule change or cancellation
- Mandatory city tax

Gratuities/tipping

Land

Gratuities (tips) are not included for the services of the tour leader (when available) and driver throughout the tour. The recommended tip is \$8 - \$10 USD per person per day. This covers the guide/leader and the driver and will be collected on tour.

Please note: Tipping for services provided is always a matter of personal discretion; however, please be aware that many locals consider tipping part of their normal remuneration, and they may approach you for payment; there's no need to be intimidated by the request.

Cruise

It is not standard practice to tip on Hurtigruten ships, but if you feel that certain crew members should be rewarded for providing exceptional service, there are tip boxes in the restaurant together with envelopes.

Other Important Information

WHAT TO PACK FOR AN EXPEDITION CRUISE

To make packing a bit easier, Hurtigruten has drawn up a packing list. If you should forget something, don't worry! On board all the ships you will find a shop with a wide range of clothes and practical items.

- Onboard it's smart to wear ordinary shoes.
- Bring a memory card with a large capacity – there are sockets in the cabins to recharge photo equipment.
- The dress code aboard the ship is relaxed and casual and you are not expected to dress formally for meals.
- Extra shoelaces are also a good idea.
- Bring a good pair of binoculars.
- A small waterproof backpack is necessary for carrying essentials.

- Please remember to bring your passport and a copy of it.
- Sun protection.
- Sunglasses with UV filter lenses.
- Lip balm with UV protection. Dry, cold wind and sun often cause chapped lips.
- Money in the correct currency. Remember, the ships also accept several credit cards.
- Remember to bring sufficient medication to last through any unforeseen delays.
- You will receive a wind and water-resistant parka as a memento on this ship (or another piece of HX kit).
- Rubber boots are available on loan, at no extra cost.
- Warm winter jacket
- Wind and water-resistant trousers and long thermal underwear and top (we recommend wool)
- Warm cap or headband
- You should also bring swimwear for use in our on-deck whirlpools
- Scarf or fleece tube
- Warm woollen jumper and fleece jumper/jacket, remember layers are essential
- Sunglasses with UV filter lenses
- Gloves and mittens, fleece and wool
- Warm socks
- Bring extra batteries for your camera, as battery life is shorter in cold areas
- Shoes with good soles are recommended for outdoors, on deck, and for excursions ashore. Make sure they are worn-in walking boots.

TOUR GUIDE VS. TOUR LEADER

Tour Guide

Often locals with intimate knowledge of an area, its culture, and history. Their role entails providing commentary, routing the tour, and seeing that people have a good time. They are a licensed, qualified expert who supplies specific information on the history, art, architecture and culture of the city/village/attraction where they are guiding the tour. The guide meets the group at the required place and leaves it at the end of the tour; they do not travel with the group.

Tour Leader

Important Information

An experienced person tasked with ensuring the smooth operation of tours, as well as providing practical support to passengers throughout the whole trip. Their role primarily includes assisting with accommodation, transportation between locations, and communication with tour guides at each stop. A tour leader may provide general guidance around a city or village and offer information on the place visited on the bus. However, they are not required to have specific art, architecture, or historical knowledge. They are not allowed to provide a guided tour or commentary of a city/village/attraction once there and, if caught doing so, can be fined.

Please note: Tour leaders/guides are not a standard inclusion in all travel offers. Tour leaders/guides will only be made available when required to enhance the experience of the destination featured.

CLIMATE & AVERAGE TEMPERATURES

Buenos Aires, Argentina

In December, average temperatures in Buenos Aires range from 18°C to 29°C with gentle breezes. January is considered the hottest month in Buenos Aires, and temperatures can range from 20°C to 30°C. You can expect to experience 14-15 hours of clear and sunny skies during these months and mid- to high humidity.

Rio de Janeiro, Brazil

Rio has a tropical savanna climate that closely borders a tropical monsoon climate according to the Köppen climate classification and is often characterised by long periods of heavy rain between December and March. In inland areas of the city, temperatures above 40°C are common during the summer, though rarely for long periods, while maximum temperatures above 27°C can occur monthly.

Antarctica

December and January are among the most popular and warmest months for visiting Antarctica. There are 24 hours of daylight, so you can enjoy amazing views

of Antarctica anytime. Average temperatures are approximately -1°C to 0°C.

Lima, Peru (Itinerary 2 Only)

Lima is usually described as mild and warm throughout the year without much noteworthy rain, making Lima one of the driest capitals in the world. The average temperatures range from 18°C to 28°C.

Cusco, Peru (Itinerary 2 Only)

Cusco, located in the Andes Mountains of Peru, has a highland climate with distinct dry and wet seasons. The city's elevation, approximately 3,400 metres above sea level, contributes to its cooler temperatures.

Dry Season (May to October): This period is considered winter in Cusco and is characterised by dry and sunny weather. Days are generally clear, ranging from around 10°C to 20°C. However, nights can be quite chilly, with temperatures dropping to around 0°C.

Wet Season (November to April): Cusco's wet season coincides with the summer months. There is a higher chance of rainfall during this time, and the weather can be more unpredictable. Daytime temperatures are still mild, ranging from 12°C to 18°C, but nights are relatively milder compared to the dry season.

It's important to note that Cusco's weather can vary significantly throughout the day due to its high altitude. Visitors are advised to bring layers, including warm clothing for cooler evenings and mornings, as well as sun protection for the strong mountain sun during the day.

Seasons in Antarctica

Antarctica only has two seasons which are summer and winter. Because it's located in the southern hemisphere, Antarctica's summer is from October to February.

During this time, the sun is almost always in the sky. Days rapidly get longer there in summer, until, eventually, the sun doesn't set at all. This phenomenon is called the Midnight Sun. Although there are multiple places in the northern hemisphere that experience this perpetual sunlight during

half of the year, Antarctica is the only southern location where it can be seen.

January is the warmest month in Antarctica, during which average temperatures climb all the way up to 0 degrees in the Antarctic Peninsula. However, the average temperature ranges from -10 degrees celsius to -60 degrees, depending on how far into the continent you travel.

If anyone is in Antarctica once winter comes, they're staying until summer returns. Flights and ships cease travel to and from Antarctica once the weather starts to turn, as conditions become too treacherous for travel. Typically, researchers are the only people who brave the Antarctic night. This is a valuable time for astronomers, who can use complete darkness to get spectacular views of the universe. Climatologists are also busy during this time of year tracking and comparing the temperatures on and below the continent's surface.

LATE SUMMER CRUISING IN ANTARCTICA

February - March

If you choose to go on an Antarctica cruise in February or March, you will be seeing the continent during its late summer period. This provides a variety of benefits, including the ability to explore more thoroughly as the ice melts and breaks apart, allowing for a high chance of seeing whales on the Peninsula.

What whales might you see?

Late summer is the best time to see whales in Antarctica. It is most common to see Humpback whales, Minke whales and killer whales, though it's possible to see many other species as well. These can include blue whales, fin whales, sei whales, southern right whales and sperm whales.

What about penguins?

By March, those adorable penguin chicks are growing up. They begin to fledge and grow into their adult feathers, while their parents may already have gone out to sea to begin to prepare for their own moulting

Important Information

season.

Why go during this season?

If you're an explorer who wants to see as much of Antarctica as possible, choose a late-summer cruise. As the polar ice melts, you'll have access to points much farther south than you would during other travel seasons. You will certainly see some wildlife, as well, and will get to know the untouched majesty of Antarctica in this particular form.

Weather

We always suggest referring to an online source for the most up-to-date weather information for your destination/s.

FLIGHTS

Seat Selection & Frequent Flyer Points

We do not arrange seat selection. It is essential to highlight that some airlines do not allow pre-selected seats. We strongly suggest you contact the airline directly with seating allocation requirements and/or arrive at the airport earlier to arrange your seating. While we do not add frequent flyer member details to bookings, you can do this directly with the airline once you have your flight information.

Passport Validity

Customers must provide valid passport details either at the time of purchase or no later than 45 days before the departure date. Failure to do so may result in the cancellation of the booking. Customers will be responsible for any costs and fees incurred in this instance.

CRUISE

Embarkation/Disembarkation

- Begins approximately 2 hours after docking.
- Due to security reasons, all guests must be on board 2 hours before sailing.
- Itineraries are subject to change at any time without notice.
- Check your specific sailing for exact departure and arrival times. All times are local to the port.

Please note: Strict Covid-19 terms may also apply regarding proof of insurance covering Covid-19 and/or vaccination. Please refer to the cruise lines' terms and conditions for further information before boarding.

Cruise Loyalty Discounts

Please note: Travellers must contact the cruise line directly upon receiving their travel documents in order to request any membership benefits they may be entitled to.

COACH TOUR

Meals

For meals not included, the tour leader (when available) will offer assistance with reservations, suggestions and directions to local restaurants. It is your responsibility to notify us of any dietary requests/requirements.

Please note: We will do our best to meet your requests/requirements; however, we cannot guarantee that we will always be able to.

Luggage

You will be responsible for all your personal belongings whilst on tour. You must carry your own luggage from the vehicle to the hotel room and back to the vehicle. The driver will assist with the uploading and unloading of bags from the vehicle.

OTHER

Mobility

If you require wheelchair access please contact our friendly sales and service team to inquire on your behalf.

Fitness Level Required

Adventure (and spontaneity) create some of the best travel memories. Bear in mind, your home schedules and timings might not be adhered to on tour - it's all part of the fun!

A moderate level of fitness will be required. Expect a moderate pace of touring with a focus on guided tours that may include full days with extended activity, guided city tours or nature walks. You will require a general level of fitness

for unassisted navigation of stairs and inclines, longer distances with possible periods of standing when visiting sites, walking on sloping, uneven ground or elevations. You will be responsible for your own luggage and have the ability to board all modes of transport without assistance. Please note: Many areas may be inaccessible to wheelchairs or mobility scooters, where the unassisted use of personal walking sticks and other aids may be required. Although some assistance may be available, every traveller should be self-reliant during all aspects of their travel.

Please note:

- *It is expected that every traveller must be self-reliant and able to undertake all aspects of their own travel. Please speak to your booking agent about your personal circumstances and any assistance requirements to ensure this tour is right for you.*
- *If you have any concerns, please consult your healthcare provider prior to purchase/travel.*

High Altitude Illness

Altitude illness occurs when there is a lack of oxygen in the air at high altitudes. Altitude illness will affect some travellers, with no apparent regard to age, gender or physical condition. If you have any concerns please consult your healthcare provider prior to purchase/travel.

Please note: Inoculations may be required to enter the country visited, along with re-entry into Australia after your visit. It is your responsibility to consult with your travel doctor for up-to-date medical travel information well before departure.

Express Inca Trail Trek & Rainbow Mountain Trek Optional Activities: Active

Active/demanding are more strenuous activities, suitable for a good fitness level and for guests who exercise regularly. More fast-paced activities and walking on uneven surfaces. A high fitness level is required to undertake activities, which include high-altitude trekking for

Important Information

anywhere between four to seven hours per day for an extended number of days. Recommended for active travellers with some previous trekking experience.

Please note: If you have any concerns, please consult your healthcare provider prior to purchase/travel.

Yellow Fever

A valid international certificate of vaccination against Yellow Fever is required in many countries. You may need to present this on arrival at the airport or border crossing. Some countries will refuse entry if you are unable to present your certificate. It's also common for your home country to request a Yellow Fever certificate upon arrival.

You must check with your doctor well before leaving home about the Yellow Fever requirements for the countries you'll be visiting.

Sightseeing

Please note: If entry to a site is affected by changes in operating hours or public holiday closures, your itinerary, where possible, may be adjusted, or a similar activity will be offered in its place (subject to availability).

Shopping

Shopping overseas can be a daunting and confusing experience, especially when there is a language barrier. Please be very cautious when foreign currencies and prices are involved. If paying by credit card, please pay close attention to the amount you are being charged and keep all your receipts. Do not make any purchases you are not comfortable with or feel pressured into. If you are uncertain or need assistance with the language barrier, please seek assistance from your Tour Guide/Leader. Please refer to our [Terms and Conditions](#) regarding shopping for further information.

Visas

New Zealand (Transiting)

If you do not hold an Australian passport you may be required to obtain a transit

visa. Some flight routes make a stop in New Zealand and you may be required to obtain a transit visa to board your flight. It is the passengers' sole responsibility to seek advice on the correct visa and take appropriate action to ensure they have the correct visa prior to departure. Failure to do so may result in denied boarding and or refusal of entry to the country by the local authorities and immigration department. We strongly advise you to carefully review your flight tickets and then contact your respective consulate or a visa agency to confirm the necessary visa regulations and acceptable forms of personal identification for your transit.

Brazil

If you are travelling to Brazil, a visa is required for Australian passport holders entering Brazil. Persons travelling to Brazil will require a Visit Visa to enter the country. Entry and exit conditions may change without warning. Follow the advice of border and health authorities and comply with local regulations. More information can be found here and for those arriving in Brazil by air, sea, or land, the online visa application form is accessible here.

Argentina

As a tourist, you can stay for up to 90 days without a visa, but you'll need evidence that you intend to depart the country within the 90 days, along with the following:

- A return or onward ticket and valid passport.
- Travel/medical insurance.

Please note: Officials may also ask for proof of accommodation and evidence that you have enough money or a credit card to cover your trip.

Please Note: Effective immediately, all international travellers to Argentina must hold valid travel insurance with medical coverage.

This insurance may be requested and verified upon arrival in the country. Argentina's public healthcare system will no longer provide free medical services to

foreign nationals. It is therefore essential that you obtain appropriate insurance before your departure.

Peru

Tourists don't need a visa. You can get a permit to stay for up to 3 months when you arrive. You may need a valid yellow fever vaccination certificate to enter Peru. Some airlines may want to see one when you leave. If you've visited Peru in the previous 6 days, you'll need a valid certificate to enter Australia.

Chile

If you are travelling to Chile, you must obtain your visa before you arrive in Chile. The application process can be lengthy, so allow yourself enough time before your planned travel. If you arrive in Chile without a valid visa, you won't be able to pass the immigration point, and you'll be sent back to your last port of departure. You won't be able to obtain a visa at the airport or border entry point. To enter Chile, Australian citizens must obtain a visa before arrival: SAC Sistema Atención Consular - Ciudadanos. Please reach out to the Chilean consulate for any visa requirements.

United States (Transiting)

If travelling on an Australian passport, an ESTA (visa waiver) for the USA is a strict requirement when travelling to or flying through the USA. Once a USA ESTA visa waiver is issued it is valid for 2 years or until your passport expires (whichever is sooner) and will allow multiple entries into the USA. For information on ESTA eligibility or to apply, please visit <https://esta.cbp.dhs.gov/esta/>.

Please note: Due to recent changes to USA immigration policies, TripADeal recommends all travellers visit US Customs & Border Protection.

Important:

- *Please start arranging your visa three weeks before departure to account for any delays due to consulate operating hours.*

Important Information

- *Visa rules are subject to change. Please check with the nearest embassy, consulate or immigration department of the destination/s you are visiting once you receive your travel documentation to ensure you have the most up to date information.*
- *It is your responsibility to be travel-ready and ensure that you are aware and comply with any destination or travel requirements, including the validity of all required travel documents.*
- *Passengers who are not Australian citizens must also check with the respective consulate or visa agency to determine what their visa requirements are and what personal identification is required.*
- *It is also important to note that some areas of employment, such as journalism, government authorities and charity organisations, may have additional restrictions in applying for visas. This may, in turn, affect the type of application required.*

Travel Insurance

Embarking on your next trip is exciting, and while you hope the unexpected does not happen, it is best to be prepared. We strongly recommend you take out travel insurance when making your booking. Whether it's a potential medical emergency, a flight cancellation, a delayed suitcase, or an unforeseen event, it's important to ensure you're adequately protected. For more information or advice visit <https://www.tripadeal.com.au/travel-insurance>

Schedule Of Fees

Voluntary Changes

This includes booking changes requested by you, including but not limited to those changes requiring an airline ticket or a Purchase Confirmation reissue.

- Changes - \$100 per booking and any additional charges applied by the airline/ cruise company/accommodation/other travel providers.

Name Changes Due To Passenger Error

If the incorrect name has been provided, charges of \$100 per booking and any additional charges applied by the airline/ cruise company/accommodation/other travel providers.

Supplier Fees

In the event the tour package you have purchased is unable to proceed, and/or a Travel Supplier is unable to fulfil the tour due to external circumstances (Limitation of Liability e.g. a Force Majeure event), there may be a fee or amount of money that is withheld by our Suppliers and is unrecoverable. This may be due to non-refundable airline tickets, cancellation penalties with cruise cabins or unrecoverable payments with our land/ accommodation partners. If refunds are not available from Suppliers, we will endeavour to obtain a travel credit on the best terms available and communicate these outcomes to you. In the event we are unable to obtain a refund or travel service credit, or part thereof, this cost is passed on to the customer as a Supplier Fee.