

A scenic photograph of an Antarctic landscape. In the foreground, several penguins are walking on a snowy field. In the background, there are snow-covered mountains and a body of water reflecting the sky. The title 'Antarctica Expedition & Machu Picchu' is overlaid in large white text.

Antarctica Expedition & Machu Picchu

PERU • ARGENTINA • ANTARCTICA

The Offer

Experience the ultimate adventure, seamlessly blending the wonder of Machu Picchu with the untouched beauty of Antarctica. Begin your journey in South America, where the ancient Inca citadel takes centre stage, offering breathtaking vistas and a glimpse into a fascinating past. Wander through lively cities rich with history, music, and art before heading to the world's southernmost frontier. Here, towering icebergs, pristine glaciers, and abundant wildlife create an awe-inspiring natural paradise, completing this extraordinary blend of culture, history, and nature.

In Lima, Peru, immerse yourself in a vibrant tapestry of history and cuisine, exploring landmarks like the ancient Huaca Pucllana and the UNESCO-listed historic centre before flying onward to Cusco, the former capital of the Inca empire. From there journey to the Sacred Valley, where the rich Quechua traditions captivate and inspire.

Travel aboard the scenic Peru Expedition train to Aguas Calientes—a journey that's a highlight of the trip and perfectly captures the stunning Andean landscapes. Aguas Calientes, a charming town nestled at the base of Machu Picchu, is known for its hot springs, pedestrian-friendly streets, and inviting local charm. It's an easy and delightful

place to explore on foot, offering a warm and relaxing prelude to your Machu Picchu adventure. The following day, head to Macchu Picchu to witness a breathtaking sunrise and enjoy an expert-led guided tour of the ancient Inca citadel.

In Cusco, marvel at architectural wonders like Sacsayhuamán and Koricancha, or embark on an optional Rainbow Mountain trek for sweeping views of the Andes. This journey seamlessly combines history, culture, and natural beauty for an unforgettable Peruvian experience.

Reach Argentina's capital, Buenos Aires, where the rhythm of tango echoes from a bygone era and the streets showcase a captivating blend of European elegance and Latin flair. Visit vibrant neighbourhoods like colourful La Boca and historic San Telmo, each alive with energy and charm. Savour culinary delights during an elegant tango dinner, then take a charter flight to the southernmost city in the world, Ushuaia.

Traverse the legendary Drake Passage aboard Hurtigruten's state-of-the-art, hybrid-powered expedition ships, the MS Fridtjof Nansen or MS Roald Amundsen. These cutting-edge

Offer available for a limited time or until sold out. TRIP A DEAL PTY LTD: 50149240433

Updated: 29 Jul 2025 15:43:53

Have a question about this deal? We're here to help.
Call our friendly team on 1300 158 912

1

FREQUENT
FLYER



Trip
aDeal



PERU ● ARGENTINA ● ANTARCTICA

The Offer

vessels are designed to blend advanced sustainability with unparalleled comfort. Onboard, you'll find spacious public areas with panoramic views, inviting lounges, and cosy cabins. Indulge in world-class dining at the ship's restaurants, unwind with a drink at the Explorer Lounge, or soak in a heated infinity pool.

In Antarctica, immerse yourself in a pristine world of towering icebergs, bustling penguin colonies, and fascinating scientific discoveries. This once-in-a-lifetime expedition offers awe-inspiring landscapes and the chance to step ashore on Zodiac landings, allowing you to explore remote and untouched locations up close. Experience the thrill of walking where few have ventured, observing wildlife in its natural habitat, and contributing to conservation efforts through responsible travel.

This incredible journey includes return international full-service flights, all internal flights in South America, 10-night all-inclusive Antarctica cruise, 11 nights of 4-star accommodation, 42 meals including all meals while cruising and more!

Extend the adventure and step into the heart of the Amazon Jungle with a pre-tour extension on Itinerary 2.

Offer available for a limited time or until sold out. TRIP A DEAL PTY LTD: 50149240433

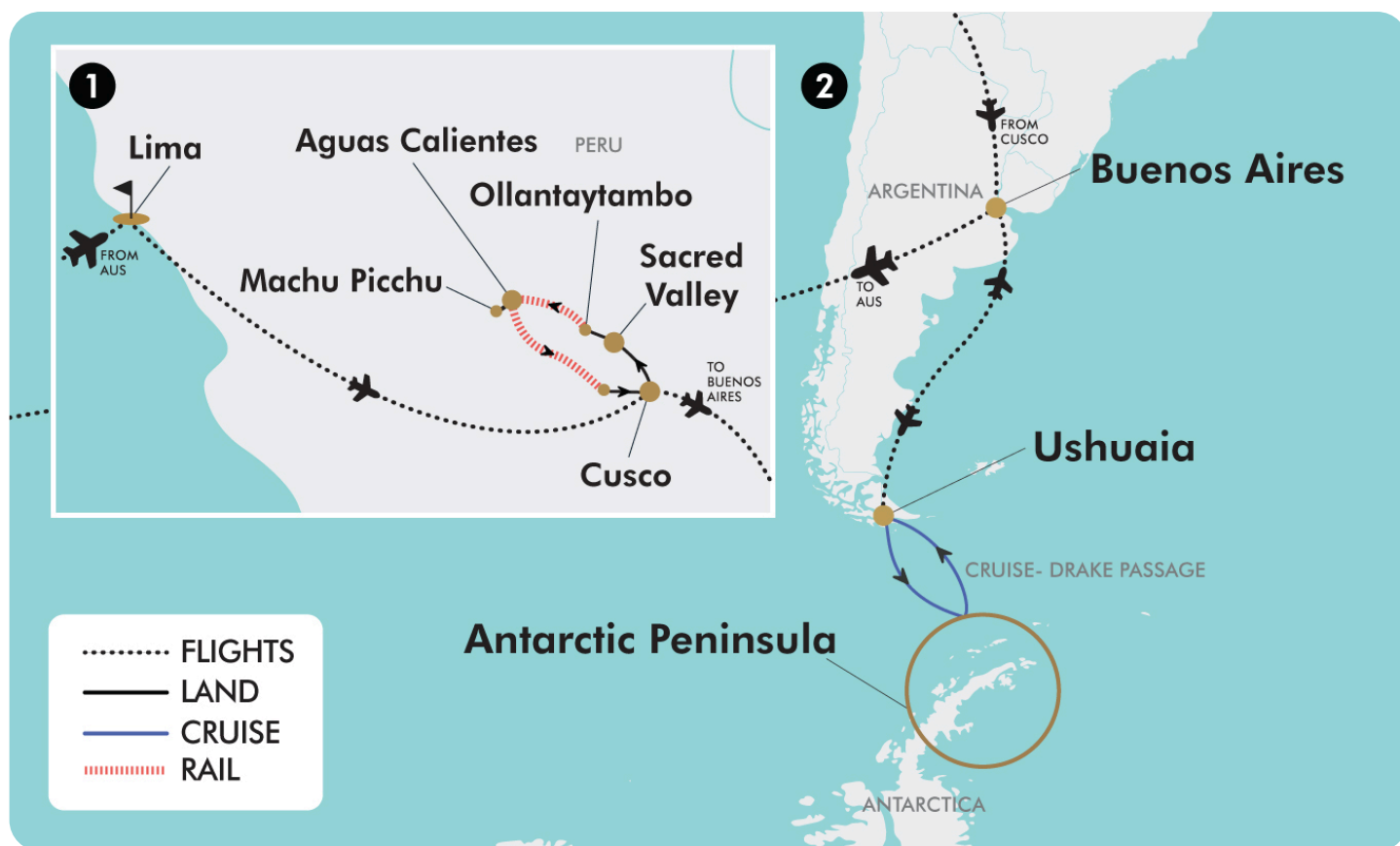
Updated: 29 Jul 2025 15:43:53

Have a question about this deal? We're here to help.
Call our friendly team on [1300 158 912](tel:1300158912)



24-DAY CRUISE & TOUR PACKAGE | ANTARCTICA EXPEDITION & MACHU PICCHU

The Map



Offer available for a limited time or until sold out. TRIP A DEAL PTY LTD: 50149240433

Updated: 29 Jul 2025 15:43:53

Have a question about this deal? We're here to help.
Call our friendly team on 1300 158 912



24-DAY CRUISE & TOUR PACKAGE | ANTARCTICA EXPEDITION & MACHU PICCHU

The Itinerary

Itinerary 1

Day 1 Australia (or New Zealand) - Lima, Peru

Today, depart from Australia (or New Zealand) for Lima, Peru. Upon arrival, a representative will transfer you to the hotel. Enjoy the remainder of the day at leisure.

Lima is a huge and fascinating melting pot of all things Peruvian where world-famous restaurants sit alongside ancient archaeological sites. Known as "The City of Kings", the Peruvian capital is packed with stunning colonial architecture, huge religious buildings, the seat of government and other important structures.

Please note:

- Due to flight scheduling and availability, some departures may occur on Day 0. Affected customers must be at the airport the day before. Flight times will be indicated on your final documentation which you will receive before departure.
- Due to limited flight availability between Australia and South America, some customers may experience a layover of up to 6 hours or more in Santiago, Chile. Lounge passes can be purchased at your own expense.
- For travellers who wish to break up their journey, a Santiago stopover package is available for purchase. Please see the Important Information for further details

Overnight: Hotel Jose Antonio Lima or similar

Meals included: In-Flight

Day 2 Lima, City Tour

After breakfast, enjoy a guided city tour visiting key sites and landmarks in Lima.

The first stop is Huaca Pucllana, a massive archaeological site in Miraflores, one of Lima's most popular districts. Huaca Pucllana was an important ceremonial and administrative centre built by the Lima culture, a pre-Incan indigenous coastal civilisation that developed along this part of the Peruvian coast between 200 CE and 700 CE. This sacred place was built from seven staggered platforms surrounded by a plaza and large walls.

Next, drive to the historic centre of Lima, a UNESCO World Heritage site, to see the beautiful Plaza de Armas (main square) surrounded by impressive colonial and Republican-era buildings. Some of Peru's most important buildings surround the square, including the Government Palace, the Cathedral of Lima, the Archbishop's Palace of Lima, the Municipal Palace and the Palace of the Union. Then, walking one block to the Convent of San Francisco, founded in the 1530s, is one of the most important religious buildings in Peru. After exploring the beautiful gardens and discovering the Monastery of San Francisco's catacombs, you'll return to the hotel for an afternoon at leisure.

Overnight: Hotel Jose Antonio Lima or similar

Meals included: Breakfast

Day 3 Lima - Sacred Valley

This morning, transfer to the airport for your flight to Cusco.

Upon arrival, meet your tour representative and journey to the Sacred Valley. Along the way, visit Chincheros, a charming Andean town known for its traditional textiles and agriculture. Here, enjoy a cultural immersion with the Quechua community, experiencing a fascinating demonstration of traditional textile-





24-DAY CRUISE & TOUR PACKAGE | ANTARCTICA EXPEDITION & MACHU PICCHU

The Itinerary

Itinerary 1

making techniques. Interact with locals and gain insight into their way of life before continuing to your hotel. After check-in, the rest of the day is yours to relax and explore at your leisure.

Overnight: San Augustin Monasterio de la Recoleta or similar
Meals included: Breakfast

Day 4 Sacred Valley - Aguas Calientes

The day begins in Urubamba with a transfer to Ollantaytambo train station, where you'll board the expedition train to Aguas Calientes, the gateway to Machu Picchu. Departing around 11:30 (exact times may vary), the two-hour train ride offers stunning views of river canyons and rolling hills.

Aguas Calientes, nestled in a lush gorge beneath Machu Picchu, blends traditional charm with vibrant markets, shops, restaurants, and hotels. The mostly pedestrianised town is surrounded by jungle-clad cliffs, with the Urubamba River flowing through. Upon arrival, enjoy time to explore the colourful streets, browse local markets, or unwind in the natural hot springs (at additional expense).

Please note, for this section of the trip, due to luggage and space limitations on the train, you will only be able to bring an overnight bag to Machu Picchu. The remainder of your luggage will be transported to the hotel in Cusco and stored there at no additional cost. For those wanting to experience a section of the Inca Trail, you can opt to supplement your day's activities with the Express Inca Trail Trek (additional cost applies).

Optional Tour Supplement - Express Inca Trail Trek

Physical ability: Active (please refer to Other Important Information for description) You will be picked up in the early morning (approximately 06:00).

Board the train for a 1.5-hour scenic train ride to kilometre 104 to start your short Inca Trail trek. From here, you will hike approximately 4 hours to the Inca site of Wiñay Wayna ("Forever Young"), which is approximately 2,680 metres above sea level. Built on a steep hillside overlooking the Urubamba River, this archaeological site has a series of 10 baths and numerous Inca buildings displaying high levels of Inca masonry. Wiñay Wayna was discovered almost 30 years after the entire world became aware of Machu Picchu and almost 40 years after Machu Picchu was first discovered. Little is known about what Wiñay Wayna was originally built for; however, there are theories that it was built as a spiritual destination or resting place before reaching Machu Picchu, where elders and royalty would cleanse themselves in the baths. Others believe that the site functioned as a kind of administrative centre to keep track of the amount of produce stored on-site.

After exploring Wiñay Wayna, you will continue your walk to Inti Punku (the Puerta del Sol). From here, you will have your first spectacular view of Machu Picchu. This site was believed to have once been the main entrance to Machu Picchu and was dedicated to Inti, the Inca Sun God. You'll then head to Aguas Calientes, where the remainder of your afternoon will be spent at leisure.



24-DAY CRUISE & TOUR PACKAGE | ANTARCTICA EXPEDITION & MACHU PICCHU

The Itinerary

Itinerary 1

Please note that due to the nature and duration of this tour, a moderate to active fitness level is required for participation in this supplementary trek. The route includes uneven surfaces, steep ascents and descents, a mix of stairs and dirt trails, and high-altitude conditions. The trek spans approximately 12 kilometres (6–8 hours) of walking, including steps for photos, lunch (included) and exploring. If you have any concerns about your ability to complete this trek, we recommend consulting your GP for guidance. Current pricing details can be found under Important Information.

Overnight: Hatun Inti Boutique Machupicchu or similar
Meals included: Breakfast

Day 5 Machu Picchu

Today will be an early start, but worth it! After an early breakfast, you'll be picked up from the hotel and taken to the gates of Machu Picchu, where, weather permitting, you'll enjoy one of the most breathtaking sunrises of your life! Then, experience a two-hour guided tour to the most famous and spectacular sites of this extensive archaeological complex, visiting the House of the Guardian, Intihuatana, Temple of the Sun, Sacred Plaza and other key Inca sites. Whilst on tour, enjoy the amazing views of the agricultural terraces of Machu Picchu and across to the surrounding mountains and plunging gorges.

Enjoy free time to explore more of this mysterious ancient city at leisure before meeting up with the guide in Aguas Calientes for lunch (at your own expense). Afterwards, take the bus down to

Aguas Calientes and board the train back to Poroy. Upon arrival at the station, you'll be transferred to the hotel in Cusco, with the evening at leisure to reminisce about your time at Machu Picchu.

Overnight: Hotel Jose Antonio Cusco or similar
Meals included: Breakfast

Day 6 Cusco, City Tour

Start your day trip with a visit to the impressive Inca fortress of Sacsayhuamán, located on a hill above Cusco. Marvel at the exceptional Inca masonry, with massive boulders precisely cut and fitted to create the fortress walls.

Next, we climb to Qenqo, an intriguing archaeological site known for its labyrinthine structure and spiritual significance. From here, enjoy stunning panoramic views of Cusco.

We then visit Tambomachay, an ancient site with aqueducts, canals, and waterfalls, believed to have served as an Inca spa, showcasing advanced hydraulic engineering. Continue to the Koricancha, the once-golden Temple of the Sun, which was the most sacred site in the Inca Empire. Discover its fascinating history and the Spanish plunder of its treasures. Lastly, we explore the Cusco Cathedral, built on the foundations of an Inca temple. Admire its impressive artworks, gold and silver reliefs, and subtle indigenous influences.

After the tour, return to the hotel, then enjoy the remainder of the day at leisure.

Overnight: Hotel Jose Antonio Cusco or similar
Meals included: Breakfast

Offer available for a limited time or until sold out. TRIP A DEAL PTY LTD: 50149240433

Updated: 29 Jul 2025 15:43:53

Have a question about this deal? We're here to help.
Call our friendly team on 1300 158 912





24-DAY CRUISE & TOUR PACKAGE | ANTARCTICA EXPEDITION & MACHU PICCHU

The Itinerary

Itinerary 1

Day 7 Cusco, Day at Leisure

Enjoy the day at leisure exploring beautiful Cusco. Cusco is a vibrant city nestled in the Peruvian Andes, known for its rich cultural heritage which seamlessly blends ancient Incan ruins with Spanish colonial architecture. Exploring Cusco on foot is one of the best ways to experience its charm and history. Wander through the narrow, cobblestone streets of the San Blas neighbourhood, known for its artisan shops and picturesque views. Along the way, you'll find vibrant markets, local cafes, and hidden courtyards, making every step an opportunity to uncover Cusco's rich culture.

Alternatively, you can choose to participate in an optional activity:

Optional Activity: Maras & Moray

Embark on a captivating half-day tour of Maras and Moray, beginning with a pickup from your Cusco hotel at approximately 09:00. The journey to Moray takes about 1.5 hours, offering breathtaking views of the Andean landscape along the way. Pass golden wheat fields, charming traditional villages, and majestic snow-capped mountains. Upon arrival at Moray, explore its fascinating amphitheatre-like terraced structures. These circular terraces, believed to have been an agricultural laboratory for the Incas, showcase their innovative techniques for optimising crop growth. It's a truly awe-inspiring site that highlights the ingenuity of the Inca Empire.

Next, you'll visit Maras, located just 3 kilometres from Moray. Here, you'll marvel at the ancient salt evaporation ponds carved into the mountainside. These more than 3,000 pools collect salty

spring water that evaporates, leaving behind the renowned sal de Maras, a prized pink salt still harvested today. The view of these glistening ponds, resembling a blanket of snow or ice, is unforgettable. After exploring Maras, you'll return to Cusco, with drop-off at your hotel included. Please refer to the current pricing in the Important Information section.

Optional Activity: Rainbow Mountain Trek

Set off before sunrise on an unforgettable full-day adventure to Rainbow Mountain (Vinicunca), one of Peru's most spectacular natural wonders. Your day begins with a 05:00 hotel pick-up from Cusco, followed by an approximately three-hour scenic drive through the South Valley, where you'll enjoy breathtaking Andean landscapes and a delicious breakfast en route.

Starting your hike in the small town of Pitumarca (3,310m), you'll follow a gentle path beside a tranquil stream, with views of Mount Ausangate, one of the region's most sacred peaks. Along the way, spot grazing alpacas and llamas, and pass through remote villages where traditional Andean life still thrives.

After about 1.5 hours of hiking, you'll reach Rainbow Mountain, standing at an impressive 5,100m. Marvel at the vibrant mineral layers that create the mountain's iconic striped appearance and enjoy approximately 30 minutes at the summit to take in the panoramic views, snap photos, and absorb the majestic setting.

The return hike is approximately one hour, followed by a hearty buffet lunch at a local restaurant. Afterwards, sit back and relax during the three-hour drive back to Cusco, arriving around 16:00. Please see current pricing in Important Information.



24-DAY CRUISE & TOUR PACKAGE | ANTARCTICA EXPEDITION & MACHU PICCHU

The Itinerary

Itinerary 1

Please note:

- *The Rainbow Mountain Trek tour requires a moderate to high level of fitness. Participants will encounter uneven surfaces, steep inclines, numerous steps and trekking at high altitudes. Prior to undertaking this optional excursion, we recommend consulting with your GP to assess your suitability for the tour.*

Optional Activity: Folklore Dinner & Show at 19:00

Make your way to a restaurant conveniently located near Cusco's central Plaza de Armas for an unforgettable evening. Indulge in a fabulous buffet dinner featuring a wide selection of traditional dishes, including meats, fish, vegetables, and exquisite desserts. The culinary delights are sure to please every palate. As you dine, the evening comes alive with a vibrant traditional dance show. Immerse yourself in the rich culture of the Andes with folk and classical music performed on traditional instruments, such as the quena, charango, flute, and zampoña. For an even more memorable experience, you're welcome to join the dancers on the floor and become part of the celebration. It's an enchanting way to connect with the region's culture and traditions. Please see current pricing in Important Information.

Overnight: Hotel Jose Antonio Cusco or similar

Meals included: Breakfast

Day 8 Cusco, Peru - Buenos Aires, Argentina

Today, at the appropriate time, you'll be transferred to the airport in Cusco for your flight to Buenos Aires, Argentina.

Once arrived, be met by a tour representative and transferred to the hotel. Enjoy the rest of the day at leisure.

Overnight: Grand Brizo Hotel or similar

Meals included: Breakfast

Day 9 Buenos Aires, City Tour & Tango Show

This morning, after breakfast, embark on a city tour of Buenos Aires and discover the charm and magic of this vibrant metropolis. Begin at Plaza de Mayo, a key site in Argentina's political history, surrounded by iconic buildings. Here, you'll learn about the area's significance before heading to San Telmo, one of the city's oldest neighbourhoods known for its cobblestone streets, antique shops, and picturesque architecture.

Next, explore the colourful neighbourhood of La Boca, famous for its tango culture and vibrant Caminito Street. You'll also visit important landmarks such as La Casa Rosada (the Presidential Palace, known as The Pink House), the Cabildo (the colonial town hall), and the Neoclassical Metropolitan Cathedral, where Argentina's founding father, José de San Martín, is laid to rest. Finally, admire the celebrated Recoleta Cemetery, a true labyrinth of ornate mausoleums. Stop at Eva Peron's grave, one of the country's most recognisable icons.

In the evening, you'll be picked up and transferred to Café de los Angelitos for a three-course dinner and an unforgettable tango show. Café de Los Angelitos has been a living witness to over a century of Buenos Aires' history. Now, as a leading venue for tango in the city's most elegant setting, it preserves the luxury and distinction of a bygone era while writing the first chapter of its future. Enjoy performances by tango orchestras, folk music, dancers, and singers. After the show, you'll be transferred back to your hotel.





24-DAY CRUISE & TOUR PACKAGE | ANTARCTICA EXPEDITION & MACHU PICCHU

The Itinerary

Itinerary 1

Overnight: Grand Brizo Hotel or similar

Meals included: Breakfast; Dinner

Day 10 Hurtigruten Expeditions program commences

Today, you'll be transferred to a new hotel in Buenos Aires, marking the start of your Hurtigruten Expedition program to visit the Frozen Continent of Antarctica. Once settled, enjoy the day at your leisure to explore the sights of Buenos Aires.

Please note: Hurtigruten Expeditions requires all guests to complete a Medical Screening Form for certain remote destinations, including Antarctica. This form is divided into two sections: Section A (completed by you) and Section B (completed by your doctor). The forms must be submitted for review 4-8 weeks prior to departure. If the required information is missing, you may need to resubmit. Failure to complete the forms may result in being unable to board the cruise. Please refer to the Other Important Information section for a suggested packing list for your Antarctica voyage.

Overnight: Hotel NH Buenos Aires Tango or similar

Meals included: Breakfast

Day 11 Buenos Aires - Ushuaia, Board Hurtigruten Expeditions ship

This morning, you'll be transferred from the hotel to the airport for your early flight to Ushuaia, where a hybrid-powered, state-of-the-art Hurtigruten expedition ship awaits. Ushuaia, often competing with Chile's Puerto Williams for the title of the southernmost city in the world, is set against the stunning Martial Glacier and is known as the 'end of the world.'

Upon arrival, you'll attend a mandatory health and safety briefing before enjoying a welcome dinner hosted by the Expedition Team. Afterwards, take some time to explore the ship, which will be your home for the next eleven days.

Please note: Two different expedition ships are used during the Antarctic season. For specific details about which ship operates on your departure date, refer to the Cruise section in the Important Information.

Overnight: MS Fridtjof Nansen or MS Roald Amundsen

Meals included: Breakfast; Lunch; Dinner

Day 12 Drake Passage

The ship will cross the infamous Drake Passage, named after English sea captain Sir Francis Drake, who stumbled upon it in 1578. With no landmass at this latitude, the waters can be turbulent, but don't worry—Hurtigruten's ultra-modern expedition ships easily handle the "Drake Shake."

The two-day journey across the 1000 km-wide passage gives you time to prepare for your Antarctic adventure. The Expedition Team will begin their lecture series in the onboard Science Centre, sharing their extensive experience and teaching you how to make your visit safe and sustainable. You'll also learn how to comply with IAATO guidelines, including wearing sterilised rubber boots when ashore and vacuuming your clothing to remove foreign contaminants.

During this time, you can participate in exciting "Citizen Science" projects, like whale counting, cloud observation, and sample collection, which contribute to living research.

Offer available for a limited time or until sold out. TRIP A DEAL PTY LTD: 50149240433

Updated: 29 Jul 2025 15:43:53

Have a question about this deal? We're here to help.
Call our friendly team on 1300 158 912





24-DAY CRUISE & TOUR PACKAGE | ANTARCTICA EXPEDITION & MACHU PICCHU

The Itinerary

Itinerary 1

While onboard, take advantage of the amenities—work out in the gym, relax in the Wellness Area, or enjoy meals at any of the three exquisite restaurants. Don't forget to head out on deck to look for the first icebergs and spot wildlife like whales, dolphins, and seabirds, including petrels and albatross.

Overnight: MS Fridtjof Nansen or MS Roald Amundsen
Meals included: Breakfast; Lunch; Dinner

Day 13 Drake Passage

Today, you'll continue your journey across the legendary Drake Passage. Take this opportunity to unwind and immerse yourself in the onboard experiences. Attend fascinating lectures from the Expedition Team, who will share their expertise on Antarctica's unique wildlife, history, and environment. With each passing hour, the excitement builds as you draw closer to the icy wonderland of Antarctica, which you'll arrive at the following day.

Overnight: MS Fridtjof Nansen or MS Roald Amundsen
Meals included: Breakfast; Lunch; Dinner

Day 14 Antarctica

Land ho! Welcome to the icy wonderland of Antarctica. For the next five days, you'll be surrounded by vast icy waters, towering glaciers, and colossal icebergs that seem to stretch into infinity. The sheer scale and beauty of the landscape are almost otherworldly, and at times, you may find yourself simply taking a moment to absorb it all. But don't worry—the silence of this frozen world will soon be interrupted by the excited shouts of fellow passengers as penguins, seals, and whales make their appearances, offering a thrilling wildlife experience right before your eyes.

Antarctica's landscape and wildlife are constantly evolving with the seasons. During the late spring months of October and November, the snow-covered terrain appears even more pristine, providing the perfect backdrop for penguins as they court and build their nests. By December and January, the arrival of more whales marks the height of summer, coinciding with the hatching of penguin chicks—often a heartwarming sight as the fluffy youngsters stumble through the snow. February and March offer the ultimate whale-watching experience when large pods are drawn to the rich feeding grounds of krill in Antarctic waters.

Once you arrive, the Expedition Team will take every opportunity to explore the environment with you. Whether you're cruising through the ice or taking Zodiac landings, you'll get up close and personal with this frozen paradise. Spotting penguins from the ship is exhilarating, but the experience becomes even more awe-inspiring when you're on land, surrounded by these charming creatures. As you cruise in smaller explorer boats or take part in



24-DAY CRUISE & TOUR PACKAGE | ANTARCTICA EXPEDITION & MACHU PICCHU

The Itinerary

Itinerary 1

optional kayaking excursions, you may even encounter seals or whales right next to you. Be sure to keep your camera ready at all times to capture these unforgettable moments.

To enrich your journey, the Expedition Team will share their expertise on a variety of fascinating topics, including the history of Antarctica, the biology of its unique wildlife, and the intriguing science of glaciology. Every day will bring new discoveries and unforgettable experiences as you explore this awe-inspiring continent.

Overnight: MS Fridtjof Nansen or MS Roald Amundsen

Meals included: Breakfast; Lunch; Dinner

Day 15 Antarctica

Be sure to speak with your expedition team onboard to book optional excursions for your time in Antarctica.

Optional Activity: Camping in Antarctica (An Amundsen Night)

Duration: 10 hours

In the true style of the early explorers, venture out at night for a once-in-a-lifetime experience as you go camping in the Antarctic night. Although Amundsen, Scott and Nordenskjold had different equipment, they used the best gear available at the time. So do you. This activity features top-of-the-line camping equipment that meets Antarctic standards for camping on snow and ice. This activity may have limited availability. If space becomes limited, participants will be chosen via a lottery-based lucky draw. Imagine yourself sleeping under the Antarctic sky with little more

than the thin wall of a tent separating you from the elements. In the true style of the early explorers, you venture out at night for this once-in-a-lifetime chance to feel like a polar explorer.

The adventure starts with a pre-camp briefing by the experienced expedition staff who accompany you on the activity. They set up your camp after dinner, with guests participating from beginning to end. If you have never pitched a tent before, this is your chance. After the camp is set up, you can either go to bed or sit outside and marvel at the stillness, or listen to penguins in the distance. Depending on the landing site, you may take short walks to nearby viewpoints and visit penguin colonies on the bright Antarctic night. If you like, wake up early, climb out of your tent and watch the sunrise. In the morning hours, take down the camp, and the boats pick you up for the return trip to the ship. Back on board, enjoy a special breakfast and debrief the experience. As an IAATO member, Hurtigruten adheres to all guidelines associated with onshore overnight stays in Antarctica. They leave nothing behind and remove all traces of their presence to protect wildlife and the fragile environment. Join them for this unique and unforgettable experience!

Optional Activity: Snowshoeing in Antarctica

Duration: 2 hours

Feel the spirit of the early Antarctic explorers. Join them for a walk on the wild side with snowshoes. Climb hills, cross glittering white plains, and untouched landscape. Here, few humans have set foot. The experienced Expedition Team will guide you to places with awe-inspiring views. You might observe penguin colonies or even see whales swimming in the sea from above.



24-DAY CRUISE & TOUR PACKAGE | ANTARCTICA EXPEDITION & MACHU PICCHU

The Itinerary

Itinerary 1

Optional Activity: Kayaking Adventure in Antarctica

Duration: 3 hours

Merge with nature on an exceptional Antarctic sea kayaking adventure. Explore nature and wildlife up close as you kayak along awe-inspiring icebergs and glaciers. Paddling through crystal-clear water, spot seals, penguins and even whales. The experienced Expedition Team will take you to stunning Antarctic areas with high chances of encountering wildlife.

Overnight: MS Fridtjof Nansen or MS Roald Amundsen

Meals included: Breakfast; Lunch; Dinner

Day 16 Antarctica

Overnight: MS Fridtjof Nansen or MS Roald Amundsen

Meals included: Breakfast; Lunch; Dinner

Day 17 Antarctica

Overnight: MS Fridtjof Nansen or MS Roald Amundsen

Meals included: Breakfast; Lunch; Dinner

Day 18 Antarctica

Overnight: MS Fridtjof Nansen or MS Roald Amundsen

Meals included: Breakfast; Lunch; Dinner

Day 19 Drake Passage

After having delved into the remote and wild continent of Antarctica over five whole days, it will be time to set sail homeward bound. By this point, both your head, heart and camera will be filled with lifelong memories. Crossing back over the Drake Passage, spend the next couple of days replaying those memories to try and stay in Antarctica a little longer. The Expedition Team will also recount the journey's many experiences at the Science Centre. Working out in the state-of-the-art on-board gym is also a great way to process everything you have seen. Or maybe just let your mind wander back to Antarctica in the Explorer Lounge and Bar?

Overnight: MS Fridtjof Nansen or MS Roald Amundsen

Meals included: Breakfast; Lunch; Dinner

Day 20 Drake Passage

Overnight: MS Fridtjof Nansen or MS Roald Amundsen

Meals included: Breakfast; Lunch; Dinner

Day 21 Disembark Cruise - Fly Ushuaia, Argentina to Buenos Aires

Today marks the final day of your unforgettable Antarctic adventure as the ship returns to Ushuaia. Having ventured to the bottom of the world, you've explored the remote and extraordinary Seventh Continent—a journey that only a fortunate few will ever experience.





24-DAY CRUISE & TOUR PACKAGE | ANTARCTICA EXPEDITION & MACHU PICCHU

The Itinerary

Itinerary 1

Upon arrival in Ushuaia, you'll disembark and transfer to the airport for your flight back to Buenos Aires. Once arrived, be transferred to the hotel for your final night in Argentina.

Overnight: Grand Brizo Hotel or similar

Meals included: Breakfast

Day 22 Buenos Aires, Argentina - Australia (or New Zealand)

Today, at the appropriate time, be transferred to the airport for your return flight to Australia (or New Zealand).

Meals included: Breakfast; In-Flight

Day 23 In-flight

Sit back, relax and reminisce on the memories created over the past weeks on your trip through South America & Antarctica.

Meals included: None

Day 24 Arrive Australia (or New Zealand)

Once arrived in Australia (or New Zealand), make your own onward travel arrangements.

Meals included: None



24-DAY CRUISE & TOUR PACKAGE | ANTARCTICA EXPEDITION & MACHU PICCHU

The Itinerary

Itinerary 2

Day 1 Australia (or New Zealand) - Lima, Peru

Today, depart from Australia (or New Zealand) for Lima, Peru. Upon arrival, a representative will transfer you to the hotel. Enjoy the remainder of the day at leisure.

Lima is a huge and fascinating melting pot of all things Peruvian where world-famous restaurants sit alongside ancient archaeological sites. Known as "The City of Kings", the Peruvian capital is packed with stunning colonial architecture, huge religious buildings, the seat of government and other important structures.

Please note:

- Due to flight scheduling and availability, some departures may occur on Day 0. Affected customers must be at the airport the day before. Flight times will be indicated on your final documentation which you will receive before departure.
- Due to limited flight availability between Australia and South America, some customers may experience a layover of up to 6 hours or more in Santiago, Chile. Lounge passes can be purchased at your own expense.
- For travellers who wish to break up their journey, a Santiago stopover package is available for purchase. Please see the Important Information for further details

Overnight: Hotel Jose Antonio Lima or similar

Meals included: In-Flight

Day 2 Lima, City Tour

After breakfast, enjoy a guided city tour visiting key sites and landmarks in Lima.

The first stop is Huaca Pucllana, a vast archaeological site in Miraflores, one of Lima's most popular districts. Huaca Pucllana was an important ceremonial and administrative centre built by the Lima culture, a pre-Incan indigenous coastal civilisation that developed along this part of the Peruvian coast between 200 CE and 700 CE. This sacred place was built from seven staggered platforms surrounded by a plaza and large walls.

Next, drive to the historic centre of Lima, a UNESCO World Heritage site, to see the beautiful Plaza de Armas (main square) surrounded by impressive colonial and Republican-era buildings. Some of Peru's most important buildings surround the square, including the Government Palace, the Cathedral of Lima, the Archbishop's Palace of Lima, the Municipal Palace and the Palace of the Union. Then, walking one block to the Convent of San Francisco, founded in the 1530s, is one of the most important religious buildings in Peru. After exploring the beautiful gardens and discovering the Monastery of San Francisco's catacombs, you'll return to the hotel for an afternoon at leisure.

Overnight: Hotel Jose Antonio Lima or similar

Meals included: Breakfast

Day 3 Lima - Puerto Maldonado - Amazon Jungle

Today, at the appropriate time, you will be transferred to the airport in Lima in preparation for your flight to Puerto Maldonado. Once arrive, you will be met by your specialised Amazon tour leader and transferred to your accommodation for the next two nights.



24-DAY CRUISE & TOUR PACKAGE | ANTARCTICA EXPEDITION & MACHU PICCHU

The Itinerary

Itinerary 2

Please note: Due to luggage and space limitations on the boats during your stay in the Amazon, you will only be allowed to bring a small bag with your essentials. It is highly recommended to pre-pack a smaller bag with just the essentials needed for this portion of your trip to the Amazon. The remainder of your luggage can be kept at the lodge's office in Puerto Maldonado at no cost.

Puerto Maldonado is Peru's capital of biodiversity and gateway to the Amazon. You will travel by boat for approximately 40 minutes downriver to reach the lodge, keeping a lookout for wildlife along the way. Once you arrive, you'll enjoy lunch before departing on a guided trek where you'll be introduced to the lush ecosystems of the Amazon. As you explore the 60-hectare Brazil nut concession managed by Corto Maltés Amazonia, you'll discover tropical trees, medicinal plants, and the intricate balance of life within this extraordinary environment.

During your trek, visit a recreated shinglero encampment, showcasing one of Madre de Dios's vital economic activities—rubber (latex) collection. Learn about the process of harvesting latex and its transformation into various everyday products. This immersive journey through the jungle lasts approximately two hours. Afterwards, return to the lodge where you can relax by the pool or in the hammocks on the terrace of your bungalow, savour an exotic cocktail at the bar (at your own expense) and take in the sunset views. At approximately 19:00, you will embark on a nocturnal boat trip to observe caimans, and with some luck, other exotic animals before returning to the lodge for dinner.

Overnight: Corto Maltés Amazonia or similar

Meals included: Breakfast; Lunch; Dinner

Day 4 Lake Sandoval & Canopy Tower

Start your day early with coffee or tea before departing at 06:00 for an unforgettable journey to Lake Sandoval. Enjoy a boxed breakfast and snack as you travel 20 minutes along the Madre de Dios River. Then embark on a three-kilometre trek through the lush vegetation of Tambopata National Reserve. Along the way, marvel at giant trees and observe wildlife like squirrel monkeys, howler monkeys, capuchin monkeys, and a variety of birds, including the distinctive Hoatzin (stink bird), kingfishers, and snakebirds.

Once arrive at Lake Sandoval, board small rowboats to explore its tranquil waters and search for giant river otters. Keep an eye out for reptiles, mammals, and birds in their natural habitats while enjoying breakfast in this serene setting. Afterwards, you will return to the lodge where you will enjoy lunch.

In the afternoon, head to one of the two Corto Maltés Amazonía's lookout towers, soaring 20 or 42 metres high, for breathtaking views of the jungle canopy. From this vantage point, spot unique bird species and other wildlife, and take in a spectacular Amazon sunset. The day continues with a visit to a Brazil nut camp, where you'll learn about the harvesting process and its importance as a significant economic activity in the Madre de Dios region. Enjoy some free time back at the lodge to unwind by the pool before enjoying dinner.



24-DAY CRUISE & TOUR PACKAGE | ANTARCTICA EXPEDITION & MACHU PICCHU

The Itinerary

Itinerary 2

Overnight: Corto Maltes Amazonia or similar

Meals included: Breakfast; Lunch; Dinner

Day 5 Parrot Clay Lick, Amazon Jungle - Cusco

Begin your day early with a 20-minute walk to a nearby clay lick. Here, you'll witness a fascinating natural spectacle as three to five species of vibrant parrots gather to ingest a unique type of clay found in select areas of the Amazon. This clay plays a crucial role in the birds' metabolic regulation, creating a colourful and lively scene that is a true highlight of the region.

Afterwards, return to the lodge for breakfast before departing by boat to Puerto Maldonado airport for your flight to Cusco. Once arrived, you will be met by a tour representative and transferred to the hotel where you can enjoy the remainder of the day at leisure.

Overnight: San Augustin Monasterio de la Recoleta or similar

Meals included: Breakfast

Day 6 Sacred Valley - Aguas Calientes

The day begins in Urubamba with a transfer to Ollantaytambo train station, where you'll board the expedition train to Aguas Calientes, the gateway to Machu Picchu. Departing around 11:30 (exact times may vary), the two-hour train ride offers stunning views of river canyons and rolling hills.

Aguas Calientes, nestled in a lush gorge beneath Machu Picchu, blends traditional charm with vibrant markets, shops, restaurants, and hotels. The mostly pedestrianised town is surrounded by jungle-clad cliffs, with the Urubamba River flowing through.

Upon arrival, enjoy time to explore the colourful streets, browse local markets, or unwind in the natural hot springs (at additional expense).

Please note, for this section of the trip, due to luggage and space limitations on the train, you will only be able to bring an overnight bag to Machu Picchu. The remainder of your luggage will be transported to the hotel in Cusco and stored there at no additional cost. For those wanting to experience a section of the Inca Trail, you can opt to supplement your day's activities with the Express Inca Trail Trek (additional cost applies).

Optional Tour Supplement - Express Inca Trail Trek

Physical ability: Active (please refer to Other Important Information for description)

You will be picked up in the early morning (approximately at 06:00). Board the train for a 1.5-hour scenic train ride to Kilometre 104 to start your short Inca Trail trek. From here, you will hike approximately 4 hours to the Inca site of Wiñay Wayna ("Forever Young") which is approximately 2,680 metres above sea level. Built on a steep hillside overlooking the Urubamba River, this archaeological site has a series of 10 baths and numerous Inca buildings displaying high levels of Inca masonry. Wiñay Wayna was discovered almost 30 years after the entire world knew about Machu Picchu and almost 40 years after Machu Picchu was first discovered. Little is known about what Wiñay Wayna was originally built for, however, there are theories that it was built as a spiritual destination or resting place before reaching Machu Picchu, where elders and royalty would cleanse



24-DAY CRUISE & TOUR PACKAGE | ANTARCTICA EXPEDITION & MACHU PICCHU

The Itinerary

Itinerary 2

themselves in the baths. Others believe that the site functioned as a kind of administrative centre to keep track of the amount of produce stored on-site.

After exploring Wiñay Wayna, you will continue your walk to Inti Punku (the Puerta del Sol). From here, you will have your first spectacular view of Machu Picchu. This site was believed to have once been the main entrance to Machu Picchu and was dedicated to Inti, the Inca Sun God. You'll then head to Aguas Calientes where the remainder of your afternoon will be spent at leisure.

Please note that due to the nature and duration of this tour, a moderate to active fitness level is required for participation in this supplementary trek. The route includes uneven surfaces, steep ascents and descents, a mix of stairs and dirt trails, and high-altitude conditions. The trek spans approximately 12 kilometres (6–8 hours) of walking including steps for photos, lunch (included) and exploring. If you have any concerns about your ability to complete this trek, we recommend consulting your GP for guidance. Current pricing details can be found under Important Information.

Overnight: Hatun Inti Boutique Machupicchu or similar

Meals included: Breakfast

Day 7 Machu Picchu

Today will be an early start, but worth it! After an early breakfast, you'll be picked up from the hotel and taken to the gates of Machu Picchu where, weather permitting, you'll enjoy one of the most breathtaking sunrises of your life! Then, experience a two-hour guided tour to the most famous and spectacular sites of this extensive archaeological complex, visiting the House of the Guardian, Intihuatana, Temple of the Sun, Sacred Plaza and other key Inca sites. Whilst on tour, enjoy the amazing views of the agricultural terraces of Machu Picchu and across to the surrounding mountains and plunging gorges.

Enjoy free time to explore more of this mysterious ancient city at leisure before meeting up with the guide in Aguas Calientes for lunch (at your own expense). Afterwards, take the bus down to Aguas Calientes and board the train back to Poroy. Upon arrival at the station, you'll be transferred to the hotel in Cusco, with the evening at leisure to reminisce about your time at Machu Picchu.

Overnight: Hotel Jose Antonio Cusco or similar

Meals included: Breakfast

Day 8 Cusco, City Tour

Start your day trip with a visit to the impressive Inca fortress of Sacsayhuamán, located on a hill above Cusco. Marvel at the exceptional Inca masonry, with massive boulders precisely cut and fitted to create the fortress walls.

Next, we climb to Qenqo, an intriguing archaeological site known for its labyrinthine structure and spiritual significance. From here, enjoy stunning panoramic views of Cusco.



24-DAY CRUISE & TOUR PACKAGE | ANTARCTICA EXPEDITION & MACHU PICCHU

The Itinerary

Itinerary 2

We then visit Tambomachay, an ancient site with aqueducts, canals, and waterfalls, believed to have served as an Inca spa, showcasing advanced hydraulic engineering.

Continue to the Koricancha, the once-golden Temple of the Sun, which was the most sacred site in the Inca Empire. Learn about its fascinating history and the Spanish destruction of its treasures.

Lastly, we explore the Cusco Cathedral, built on the foundations of an Inca temple. Admire its impressive artworks, gold and silver reliefs, and subtle indigenous influences.

After the tour, return to the hotel, then enjoy the remainder of the day at leisure.

Overnight: Hotel Jose Antonio Cusco or similar

Meals included: Breakfast

Day 9 Cusco, Day at Leisure

Enjoy the day at leisure exploring beautiful Cusco. Cusco, is a vibrant city nestled in the Peruvian Andes, known for its rich cultural heritage which seamlessly blends ancient Incan ruins with Spanish colonial architecture. Exploring Cusco on foot is one of the best ways to experience its charm and history. Wander through narrow, cobblestone streets of the San Blas neighbourhood, known for its artisan shops and picturesque views. Along the way, you'll find vibrant markets, local cafes, and hidden courtyards, making every step an opportunity to uncover Cusco's rich culture.

Alternatively, you can choose to participate in an optional activity:

Optional Activity: Maras & Moray Embark on a captivating half-day tour of Maras and Moray

Beginning with a pickup from your Cusco hotel at approximately 09:00. The journey to Moray takes about 1.5 hours, offering breathtaking views of the Andean landscape along the way. Pass golden wheat fields, charming traditional villages, and majestic snow-capped mountains.

Upon arrival at Moray, explore its fascinating amphitheatre-like terraced structures. These circular terraces, believed to have been an agricultural laboratory for the Incas, showcase their innovative techniques for optimising crop growth. It's a truly awe-inspiring site that highlights the ingenuity of the Inca Empire.

Next, you'll visit Maras, located just 3 kilometres from Moray. Here, you'll marvel at the ancient salt evaporation ponds carved into the mountainside. These more than 3,000 pools collect salty spring water that evaporates to leave behind the renowned sal de Maras, a prized pink salt still harvested today. The view of these glistening ponds, resembling a blanket of snow or ice, is unforgettable. After exploring Maras, you'll return to Cusco, with drop-off at your hotel included. Please see the current pricing in Important Information.

Optional Activity: Rainbow Mountain Trek

Set off before sunrise on an unforgettable full-day adventure to Rainbow Mountain (Vinicunca), one of Peru's most spectacular natural wonders. Your day begins with a 05:00 hotel pick-up from





24-DAY CRUISE & TOUR PACKAGE | ANTARCTICA EXPEDITION & MACHU PICCHU

The Itinerary

Itinerary 2

Cusco, followed by an approximately three-hour scenic drive through the South Valley, where you'll enjoy breathtaking Andean landscapes and a delicious breakfast en route.

Starting your hike in the small town of Pitumarca (3,310m), you'll follow a gentle path beside a tranquil stream, with views of Mount Ausangate, one of the region's most sacred peaks. Along the way, spot grazing alpacas and llamas, and pass through remote villages where traditional Andean life still thrives.

After about 1.5 hours of hiking, you'll reach Rainbow Mountain, standing at an impressive 5,100m. Marvel at the vibrant mineral layers that create the mountain's iconic striped appearance and enjoy approximately 30 minutes at the summit to take in the panoramic views, snap photos, and absorb the majestic setting.

The return hike is approximately one hour, followed by a hearty buffet lunch at a local restaurant. Afterwards, sit back and relax during the three-hour drive back to Cusco, arriving around 16:00. Please see current pricing in Important Information.

Please note:

- *The Rainbow Mountain Trek tour requires a moderate to high level of fitness. Participants will encounter uneven surfaces, steep inclines, numerous steps and trekking at high altitudes. Prior to undertaking this optional excursion, we recommend consulting with your GP to assess your suitability for the tour.*

Optional Activity: Folklore Dinner & Show at 19:00

Make your way to a restaurant conveniently located near Cusco's central Plaza de Armas for an unforgettable evening. Indulge in a fabulous buffet dinner featuring a wide selection of traditional

dishes, including meats, fish, vegetables, and exquisite desserts. The culinary delights are sure to please every palate. As you dine, the evening comes alive with a vibrant traditional dance show. Immerse yourself in the rich culture of the Andes with folk and classical music performed on traditional instruments like the quena, charango, flute, and zampoña. For an even more memorable experience, you're welcome to join the dancers on the floor and become part of the celebration. It's an enchanting way to connect with the region's culture and traditions. Please see the current pricing in Important Information.

Overnight: Hotel Jose Antonio Cusco or similar

Meals included: Breakfast

Day 10 Cusco, Peru - Buenos Aires, Argentina

Today, at the appropriate time, you'll be transferred to the airport in Cusco for your flight to Buenos Aires, Argentina.

Once arrived, be met by a tour representative and transferred to the hotel. Enjoy the rest of the day at leisure.

Overnight: Grand Brizo Hotel or similar

Meals included: Breakfast



24-DAY CRUISE & TOUR PACKAGE | ANTARCTICA EXPEDITION & MACHU PICCHU

The Itinerary

Itinerary 2

Day 11 Buenos Aires, City Tour & Tango Show

This morning, after breakfast, embark on a city tour of Buenos Aires and discover the charm and magic of this vibrant metropolis. Begin at Plaza de Mayo, a key site in Argentina's political history, surrounded by iconic buildings. Here, you'll learn about the area's significance before heading to San Telmo, one of the city's oldest neighbourhoods, known for its cobblestone streets, antique shops, and picturesque architecture.

Next, explore the colourful neighbourhood of La Boca, famous for its tango culture and vibrant Caminito Street. You'll also visit important landmarks such as La Casa Rosada (the Presidential Palace, known as The Pink House), the Cabildo (the colonial town hall), and the Neoclassical Metropolitan Cathedral, where Argentina's founding father, José de San Martín, is laid to rest. Finally, admire the celebrated Recoleta Cemetery, a true labyrinth of ornate mausoleums. Stop at Eva Peron's grave, one of the country's most recognisable icons.

In the evening, you'll be picked up and transferred to Cafe de los Angelitos for a three-course dinner and an unforgettable tango show. Café de Los Angelitos has been a living witness to over a century of Buenos Aires' history. Now, as a leading venue for tango in the city's most elegant setting, it preserves the luxury and distinction of a bygone era while writing the first chapter of its future. Enjoy performances by tango orchestras, folk music, dancers, and singers. After the show, you'll be transferred back to your hotel.

Overnight: Grand Brizo Hotel or similar

Meals included: Breakfast; Dinner

Day 12 Hurtigruten Expeditions program commences

Today, you'll be transferred to a new hotel in Buenos Aires, marking the start of your Hurtigruten Expedition program to visit the Frozen Continent of Antarctica. Once settled, enjoy the day at your leisure to explore the sights of Buenos Aires.

Please note: Hurtigruten Expeditions requires all guests to complete a Medical Screening Form for certain remote destinations, including Antarctica. This form is divided into two sections: Section A (completed by you) and Section B (completed by your doctor). The forms must be submitted for review 4-8 weeks prior to departure. If the required information is missing, you may need to resubmit. Failure to complete the forms may result in being unable to board the cruise. Please refer to the Other Important Information section for a suggested packing list for your Antarctica voyage.

Overnight: Hotel NH Buenos Aires Tango or similar

Meals included: Breakfast

Day 13 Buenos Aires - Ushuaia, Board Hurtigruten Expeditions ship

This morning, you'll be transferred from the hotel to the airport for your early flight to Ushuaia, where a hybrid-powered, state-of-the-art Hurtigruten expedition ship awaits. Ushuaia, often competing with Chile's Puerto Williams for the title of the southernmost city in the world, is set against the stunning Martial Glacier and is known as the 'end of the world.'

Upon arrival, you'll attend a mandatory health and safety briefing before enjoying a welcome dinner hosted by the Expedition Team. Afterwards, take some time to explore the ship, which will be your home for the next eleven days.



24-DAY CRUISE & TOUR PACKAGE | ANTARCTICA EXPEDITION & MACHU PICCHU

The Itinerary

Itinerary 2

Please note: Two different expedition ships are used during the Antarctic season. For specific details about which ship operates on your departure date, refer to the Cruise section in the Important Information.

Overnight: MS Fridtjof Nansen or MS Roald Amundsen
Meals included: Breakfast; Lunch; Dinner

Day 14 Drake Passage

The ship will cross the infamous Drake Passage, named after English sea captain Sir Francis Drake, who stumbled upon it in 1578. With no landmass at this latitude, the waters can be turbulent, but don't worry—Hurtigruten's ultra-modern expedition ships easily handle the "Drake Shake."

The two-day journey across the 1000 km-wide passage gives you time to prepare for your Antarctic adventure. The Expedition Team will begin their lecture series in the onboard Science Centre, sharing their extensive experience and teaching you how to make your visit safe and sustainable. You'll also learn how to comply with IAATO guidelines, including wearing sterilised rubber boots when ashore and vacuuming your clothing to remove foreign contaminants.

During this time, you can participate in exciting "Citizen Science" projects, like whale counting, cloud observation, and sample collection, which contribute to living research.

While onboard, take advantage of the amenities—work out in the gym, relax in the Wellness Area, or enjoy meals at any of the three exquisite restaurants. Don't forget to head out on deck to look for the first icebergs and spot wildlife like whales, dolphins, and seabirds, including petrels and albatross.

Overnight: MS Fridtjof Nansen or MS Roald Amundsen
Meals included: Breakfast; Lunch; Dinner

Day 15 Drake Passage

Today, you'll continue your journey across the legendary Drake Passage. Take this opportunity to unwind and immerse yourself in the onboard experiences. Attend fascinating lectures from the Expedition Team, who will share their expertise on Antarctica's unique wildlife, history, and environment. With each passing hour, the excitement builds as you draw closer to the icy wonderland of Antarctica, which you'll arrive at the following day.

Overnight: MS Fridtjof Nansen or MS Roald Amundsen
Meals included: Breakfast; Lunch; Dinner



24-DAY CRUISE & TOUR PACKAGE | ANTARCTICA EXPEDITION & MACHU PICCHU

The Itinerary

Itinerary 2

Day 16 Antarctica

Land ho! Welcome to the icy wonderland of Antarctica. For the next five days, you'll be surrounded by vast icy waters, towering glaciers, and colossal icebergs that seem to stretch into infinity. The sheer scale and beauty of the landscape are almost otherworldly, and at times, you may find yourself simply taking a moment to absorb it all. But don't worry—the silence of this frozen world will soon be interrupted by the excited shouts of fellow passengers as penguins, seals, and whales make their appearances, offering a thrilling wildlife experience right before your eyes.

Antarctica's landscape and wildlife are constantly evolving with the seasons. During the late spring months of October and November, the snow-covered terrain appears even more pristine, providing the perfect backdrop for penguins as they court and build their nests. By December and January, the arrival of more whales marks the height of summer, coinciding with the hatching of penguin chicks—often a heartwarming sight as the fluffy youngsters stumble through the snow. February and March offer the ultimate whale-watching experience when large pods are drawn to the rich feeding grounds of krill in Antarctic waters.

Once you arrive, the Expedition Team will take every opportunity to explore the environment with you. Whether you're cruising through the ice or taking Zodiac landings, you'll get up close and personal with this frozen paradise. Spotting penguins from the ship is exhilarating, but the experience becomes even more awe-inspiring when you're on land, surrounded by these charming creatures. As you cruise in smaller explorer boats or take part in

optional kayaking excursions, you may even encounter seals or whales right next to you. Be sure to keep your camera ready at all times to capture these unforgettable moments.

To enrich your journey, the Expedition Team will share their expertise on a variety of fascinating topics, including the history of Antarctica, the biology of its unique wildlife, and the intriguing science of glaciology. Every day will bring new discoveries and unforgettable experiences as you explore this awe-inspiring continent.

Overnight: MS Fridtjof Nansen or MS Roald Amundsen

Meals included: Breakfast; Lunch; Dinner

Day 17 Antarctica

Be sure to speak with your expedition team onboard to book optional excursions for your time in Antarctica.

Optional Activity: Camping in Antarctica (An Amundsen Night)

Duration: 10 hours

In the true style of the early explorers, venture out at night for a once-in-a-lifetime experience as you go camping in the Antarctic night. Although Amundsen, Scott and Nordenskjold had different equipment, they used the best gear available at the time. So do you. This activity features top-of-the-line camping equipment that meets Antarctic standards for camping on snow and ice. This activity may have limited availability. If space becomes limited, participants will be chosen via a lottery-based lucky draw. Imagine yourself sleeping under the Antarctic sky with little more



24-DAY CRUISE & TOUR PACKAGE | ANTARCTICA EXPEDITION & MACHU PICCHU

The Itinerary

Itinerary 2

than the thin wall of a tent separating you from the elements. In the true style of the early explorers, you venture out at night for this once-in-a-lifetime chance to feel like a polar explorer.

The adventure starts with a pre-camp briefing by the experienced expedition staff who accompany you on the activity. They set up your camp after dinner, with guests participating from beginning to end. If you have never pitched a tent before, this is your chance. After the camp is set up, you can either go to bed or sit outside and marvel at the stillness, or listen to penguins in the distance. Depending on the landing site, you may take short walks to nearby viewpoints and visit penguin colonies on the bright Antarctic night. If you like, wake up early, climb out of your tent and watch the sunrise. In the morning hours, take down the camp, and the boats pick you up for the return trip to the ship. Back on board, enjoy a special breakfast and debrief the experience. As an IAATO member, Hurtigruten adheres to all guidelines associated with onshore overnight stays in Antarctica. They leave nothing behind and remove all traces of their presence to protect wildlife and the fragile environment. Join them for this unique and unforgettable experience!

Optional Activity: Snowshoeing in Antarctica

Duration: 2 hours

Feel the spirit of the early Antarctic explorers. Join them for a walk on the wild side with snowshoes. Climb hills, cross glittering white plains, and untouched landscape. Here, few humans have set foot. The experienced Expedition Team will guide you to places with awe-inspiring views. You might observe penguin colonies or even see whales swimming in the sea from above.

Optional Activity: Kayaking Adventure in Antarctica

Duration: 3 hours

Merge with nature on an exceptional Antarctic sea kayaking adventure. Explore nature and wildlife up close as you kayak along awe-inspiring icebergs and glaciers. Paddling through crystal-clear water, spot seals, penguins and even whales. The experienced Expedition Team will take you to stunning Antarctic areas with high chances of encountering wildlife.

Overnight: MS Fridtjof Nansen or MS Roald Amundsen
Meals included: Breakfast; Lunch; Dinner

Day 18 Antarctica

Overnight: MS Fridtjof Nansen or MS Roald Amundsen
Meals included: Breakfast; Lunch; Dinner

Day 19 Antarctica

Overnight: MS Fridtjof Nansen or MS Roald Amundsen
Meals included: Breakfast; Lunch; Dinner

Day 20 Antarctica

Overnight: MS Fridtjof Nansen or MS Roald Amundsen
Meals included: Breakfast; Lunch; Dinner

Offer available for a limited time or until sold out. TRIP A DEAL PTY LTD: 50149240433

Updated: 29 Jul 2025 15:43:53

Have a question about this deal? We're here to help.
Call our friendly team on 1300 158 912





24-DAY CRUISE & TOUR PACKAGE | ANTARCTICA EXPEDITION & MACHU PICCHU

The Itinerary

Itinerary 2

Day 21 Drake Passage

After having delved into the remote and wild continent of Antarctica over five whole days, it will be time to set sail homeward bound. By this point, both your head, heart and camera will be filled with lifelong memories. Crossing back over the Drake Passage, spend the next couple of days replaying those memories to try and stay in Antarctica a little longer. The Expedition Team will also recount the journey's many experiences at the Science Centre. Working out in the state-of-the-art on-board gym is also a great way to process everything you have seen. Or maybe just let your mind wander back to Antarctica in the Explorer Lounge and Bar?

Overnight: MS Fridtjof Nansen or MS Roald Amundsen

Meals included: Breakfast; Lunch; Dinner

Day 22 Drake Passage

Overnight: MS Fridtjof Nansen or MS Roald Amundsen

Meals included: Breakfast; Lunch; Dinner

Day 23 Disembark Cruise - Fly Ushuaia, Argentina to Buenos Aires

Today marks the final day of your unforgettable Antarctic adventure as the ship returns to Ushuaia. Having ventured to the bottom of the world, you've explored the remote and extraordinary Seventh Continent—a journey that only a fortunate few will ever experience.

Upon arrival in Ushuaia, you'll disembark and transfer to the airport for your flight back to Buenos Aires. Once arrived, be transferred to the hotel for your final night in Argentina.

Overnight: Grand Brizo Hotel or similar

Meals included: Breakfast

Day 24 Buenos Aires, Argentina - Australia (or New Zealand)

Today, at the appropriate time, be transferred to the airport for your return flight to Australia (or New Zealand)

Meals included: Breakfast; In-Flight

Day 25 In-flight

Sit back, relax and reminisce on the memories created over the past weeks on your trip through South America & Antarctica.

Meals included: None

Day 26 Arrive Australia (or New Zealand)

Once arrived in Australia (or New Zealand), make your own onward travel arrangements.

Meals included: None



24-DAY CRUISE & TOUR PACKAGE | ANTARCTICA EXPEDITION & MACHU PICCHU

Tour Inclusions

HIGHLIGHTS

Embark on a journey of a lifetime, exploring Antarctica's* wonders and the magic of Machu Picchu

Cruise in style aboard Hurtigruten's state-of-the-art expedition ships, MS Fridtjof Nansen or MS Roald Amundsen

Witness extraordinary wildlife: penguin colonies, majestic whales, playful orcas, seals, and soaring Antarctic seabirds

Cross the legendary Drake Passage, where the Atlantic meets the Pacific

Set foot on the Great White Continent with expertly guided Zodiac landings

Deepen your knowledge with captivating lectures from the onboard Expedition Team

Stand in awe of Machu Picchu, the legendary Lost City of the Incas, and uncover its mysteries with an expert guide revealing its most iconic landmarks and hidden treasures

Explore ancient ruins, bustling markets, and stunning vistas in Peru's Sacred Valley

Relax in Aguas Calientes, surrounded by serene hot springs

Discover Cusco's rich Inca heritage and iconic landmarks like Sacsayhuamán and the Temple of the Sun

Connect with Quechua culture through an immersive experience in the Sacred Valley

Soak up Argentina's rich history and culture with a 3-course dinner & Tango show

Discover colourful Caminito Street in La Boca on a city tour of Buenos Aires

*Medical clearance is required prior to boarding for all expedition cruises to Antarctica.

FLIGHTS

Return international full-service flights (economy class), surcharges may apply

All internal (international and domestic) flights (economy class) within South America

Offer available for a limited time or until sold out. TRIP A DEAL PTY LTD: 50149240433

Updated: 29 Jul 2025 15:43:53

Have a question about this deal? We're here to help.
Call our friendly team on 1300 158 912

25

FREQUENT
FLYER



Trip
aDeal



24-DAY CRUISE & TOUR PACKAGE | ANTARCTICA EXPEDITION & MACHU PICCHU

Tour Inclusions

CRUISE

10-night All-Inclusive Antarctica cruise aboard Hurtigruten's expedition ship 'MS Fridjof Nansen' or 'MS Roald Amundsen'

Spend 5 days in Antarctica with multiple small group Zodiac landings & activities at numerous spectacular locations

Breakfast, lunch and dinner in restaurants Aune and Fredheim

Delicious coffee, tea and soft drinks all day

Enjoy a glass of wine or beer before dinner in the Pool Bar. Or unwind in the evening with a cocktail in the Explorer Lounge. Whatever and whenever you fancy, drinks are available throughout the day and evening at no additional cost (excluding premium drinks).

Gratuities included

Complimentary Wi-Fi on board

Onboard Activities:

In-depth lectures and discussions hosted by experts on the Expedition Team

Full use of the Science Centre, extensive library and advanced biological and geological equipment

Citizen Science Programme where you can assist with ongoing scientific research

Photography tips and techniques for capturing landscape and wildlife from the onboard professional photographer

Use of ship's hot tubs, infinity pool, panoramic sauna, outdoor and indoor gyms, and running track

Informal gatherings with the crew for daily briefings

Landing Activities:

Escorted landings with small expedition boats

Loan of boots, trekking poles and all equipment for activities

Complimentary wind and water-resistant expedition jacket (or other Hurtigruten kit)

Expedition photographers are on hand to assist you

ACCOMMODATION

11 nights of 4-star accommodation

DINING

Enjoy 42 meals including all meals whilst cruising

ESSENTIALS

Airline and cruises taxes and surcharges included

English-speaking tour guides

Museum and archaeological site entrances as per itinerary

TRANSPORT

Transportation by private air-conditioned vehicles

TRANSFERS

All airport and cruise port transfers included



24-DAY CRUISE & TOUR PACKAGE | ANTARCTICA EXPEDITION & MACHU PICCHU

Tour Inclusions

ITINERARY 2 - AMAZON JUNGLE PRE-TOUR
EXTENSION

- All of the above, plus the following:
- Spend two unforgettable nights in the breathtaking Amazon Rainforest
- Learn about products made in the Amazon
- Witness diverse flora and fauna unique to the Jungle
- Seek out caimans, otters, macaws, anacondas and more
- Experience the captivating change in the rainforest's sounds as night falls
- Marvel at the breathtaking views of the Amazon's canopy from one of two lookout towers
- Domestic (economy class) flight from Lima to Puerto Maldonado & Puerto Maldonado to Cusco
- Enjoy 6 meals, including all meals whilst in the Amazon Jungle
- Experienced Amazon Jungle guide
- Return boat transfers along the Madre de Dios river to the jungle lodge
- Airport transfers

Important Information

**Please note: All information provided in this brochure is subject to both change and availability. Prior to purchase please check the current deal for up-to-date information. If you have already purchased this deal, the terms and conditions on your Purchase Confirmation apply and take precedence over the information in this brochure.*

Booking Information

After purchase, you will receive a receipt and a Purchase Confirmation, directing you to an online Passenger Information Form. You must complete the Passenger Information Form within 72 hours of purchase.

Any special requests, preferences and optional extras MUST be clearly stated in your Passenger Information Form. Any change requested after submitting your Passenger Information Form cannot be guaranteed, is strictly subject to availability and will incur surcharges as outlined in the Schedule of Fees below.

Please note: All countries and territories have different entry requirements in relation to vaccinations, quarantine/isolation periods and travel restrictions. Due to the evolving nature, we would ask all of our customers to monitor, meet and adhere to the specific requirements of their intended destination(s) in the lead-up to and immediately before travel, as well as any requirements post-travel upon their return.

Our Policies

Cancellation & Refund Policy

By placing a booking with us, you acknowledge the following important information:

- **we act as your booking agent ;**

TripADeal is a booking services provider, and curates the Travel Offers available on our website. We act as your booking agent, and we receive payment for the Booking Services as part of the booking price, however, we do not provide any of the Travel Services (flights, accommodation, tours or other products or services) included in your booking – the Travel Services are provided by a number of third party Travel Suppliers.

- **each booking is unique ;** our Travel Offers are made up of a variety of different components and are, during the booking process, uniquely tailored to suit your requirements, for example, departure dates and ports, flight and room upgrades, tour inclusions, etc.

- **changes/modifications to your booking may not be possible ;** once your booking has been made, changes or modifications may not be possible, and where possible, may incur a fee. It is important to ensure that the information you provide during the booking process is accurate and up to date, and that you read the Travel Offer carefully before placing your order.

- **Travel Offers are a package ;** our Travel Offers have been curated into package offerings and must be used as a package – individual components cannot be used independently of the full package offering.

- **our Travel Offers are generally non-refundable;** in order to provide great value Travel Offers, we work with a variety of Travel Suppliers to find the best deals – this often means the Travel Suppliers' offerings are non-refundable to ensure the best price. We recommend that you obtain travel insurance as soon as you make a booking with us.

To read more about our Cancellation and Refund Policy, please click [here](#).

General Terms & Conditions

By placing your booking with us, you acknowledge and agree to our [Terms and Conditions](#), [Privacy Policy](#) and [Cancellation Policy](#).

Offer Essentials

This Travel Offer is valid for travel on selected dates until the 18th February 2026.

Minimum group size 20, maximum group size 40 per vehicle.

This Travel Offer is priced per person based on a twin share.

Departure Dates & Surcharges

See checkout for live dates and availability.

Single Traveller Supplement

For solo travellers a select number of solo cabins are available for these departures. Please see the cart for pricing details and availability.

Child Policy

- No child discounts are offered. The full price applies to all children travelling with their parents.
- Valid for children 12 years old and over.

Please note: Children must be accompanied by a responsible adult 18 years old and over to travel. No unaccompanied minors are allowed.

Cruise

Please note: Hurtigruten Expeditions requires all guests to complete a Medical Screening Form for remote destinations, including Antarctica. This form is divided into two sections: Section A (completed by you) and Section B (completed by your doctor). The forms must be submitted for review 4 to 8 weeks prior to departure. If the required information is missing, you may need to resubmit it. Failure to complete the forms may result in being unable to board the cruise.

Flights

Departure Cities

Sydney, Melbourne, Brisbane*, Adelaide*, Perth*, Auckland

Departure City Surcharges

- Brisbane: \$300 per person
- Adelaide: \$400 per person
- Perth: \$700 per person

International Flight(s)

- Cabin Class: Economy Class

Please note: We cannot accommodate one-way flights. Travellers must take all included flights within the package, and any flights intentionally forfeited will result in later flights being subject to cancellation.

Domestic Flight(s) Used

- Cabin Class: Economy Class

Important Information

- Route - Itinerary 1: Lima to Cusco, Cusco to Buenos Aires, Buenos Aires to Ushuaia, Ushuaia to Buenos Aires
- Route - Itinerary 2: Lima to Puerto Maldonado, Puerto Maldonado to Cusco, Cusco to Buenos Aires, Buenos Aires to Ushuaia, Ushuaia to Buenos Aires

Domestic & South America Internal Flights Information

Baggage allowance per person
1 x 7kg of checked baggage
1 x 23kg of carry-on baggage

Arrive Early & Stay Behind Options

Arrive Early

Lima - From \$300 per person, subject to availability.

Stay Behind

Buenos Aires - From \$300 per person, subject to availability.

Please note:

- *This fee does not include extra nights' accommodation, meals or airport transfers.*
- *Flight booking changes or cancellations after air tickets have been issued are not guaranteed and may incur additional fees and fare differences, subject to the airline cancellation and change policies.*
- *Flight changes are subject to availability at the time of booking.*
- *A high-season Arrive Early or Stay Behind can be purchased for an additional charge, subject to availability. For pricing, please refer to the cart.*
- *You can arrive early, up to 60 days before your package's start date, and/or stay behind until 60 days after your package's end date. Should you wish to arrive earlier or stay behind for more than 60 days, please contact us to request availability. Additional costs may apply.*
- *High season surcharges apply to flights departing between the below date ranges:*

15th September 2025 - 12th October 2025

1st December 2025 - 19th December 2025

20th December 2025 - 4th January 2026
5th January 2026 - 31st January 2026
26th June 2026 - 17th July 2026
18th September 2026 - 9th October 2026
12th December 2026 - 18th December 2026
19th December 2026 - 3rd January 2027
4th January 2027 - 26th January 2027

Stopover Packages

- Santiago, Chile
- Includes:
- 2, 3 or 5 nights in 4-star accommodation
 - Daily breakfast
 - Return airport transfers
- For pricing, please refer to the payment cart at checkout.

Please note:

- *When a pre and post-tour stopover is chosen, the same stopover location must be chosen each way, due to the airline used.*
- *When selecting an Arrive Early or Stay Behind in conjunction with a Stopover Package, the stopover will take place after the departure date you select for your Arrive Early or Stay Behind.*
- *Stopover packages are subject to availability.*
- *In the event that a purchased stopover package and a purchased preferred airline upgrade are not compatible, you will have the option to receive a refund for the preferred airline upgrade or be offered an alternative stopover city option, e.g if you choose to fly with Singapore Airlines you cannot stopover in Dubai.*
- *Blackout dates apply to flights departing between the below date ranges:*

22nd December 2025 - 2nd January 2026

Flight Class Upgrades

Business Class: For pricing, please refer to the payment cart at checkout.

Please note:

- *Flight upgrades are subject to availability and pricing changes (if we cannot fulfil your request, the upgrade cost will be refunded).*

- *On any upgrade purchase, short-haul flights and domestic flight sectors are not guaranteed, subject to aircraft configuration.*

Missed Flights

If you fail to arrive for your outbound flight, you risk all flight and land arrangements in your destination being automatically cancelled by the airlines and land operator, respectively. Additional fees may apply to reinstate these services. If you miss your flight for whatever reason, please contact us as soon as possible to make arrangements.

Cruise

Medical Disclaimer:

Travel to Antarctica is physically demanding, and our Travel Suppliers require all guests to obtain medical clearance before departure even if you don't intend to disembark at Antarctica. This involves completing a medical form and may require medical clearance from a doctor, which could incur additional costs. Any guests who fail to provide the necessary medical documentation will be denied boarding.

Hurtigruten's MS Fridtjof Nansen or MS Roald Amundsen

Featuring Hurtigruten's revolutionary battery hybrid powered propulsion system, 'MS Fridtjof Nansen' is a near identical twin to her sister ship 'MS Roald Amundsen'. Combining state-of-the-art technology and premium onboard experience with Hurtigruten's 125 years of experience and unparalleled destinations, the Norwegian-built ship introduces the next generation of adventure travel.

Facilities Onboard

Cabins & Public Areas

The stunning scenery will be reflected in a rich and comfortable interior design. Scandinavian materials from nature, such as granite, oak, birch and wool will be used to create relaxed and stylish cabins and public areas. All cabins are outside and

Important Information

50% with a private balcony.

Science Centre

The core of the onboard experience is the Science Centre, an edutainment venue where guests and crew meet to create a deeper understanding of the areas we explore. Science Centre will also be the onboard HQ for the Expedition Team.

Restaurants

Three onboard restaurants will host a variety of dining options, with menus drawn from rich Norwegian and Nordic traditions, as well as international cuisine and local inspiration. Whether enjoying your meal at Aune Main Dining, Fredheim – the informal international meeting place, or the specialty restaurant Lindstrøm, you will indulge in low-key yet refined, modern Norwegian Nordic cooking – where our honest and delicious cuisine reflects our destinations.

Everything You Need For An Expedition Cruise

Each expedition voyage is accompanied by a hand-picked team of specialists and modern-day explorers. Highly experienced, passionate and knowledgeable, the Expedition Team will be your guides and guardians on your voyage of exploration, instructing you on safety, sustainability and science. 'MS Fridtjof Nansen' and 'MS Roald Amundsen' will feature a variety of custom-built expedition equipment including kayaks, a fleet of Blueeye underwater drones and Expedition Boats for safe landings in remote areas.

Onboard Currency

EUR

Cabins/Staterooms

RR - Polar Outside

The Polar Outside cabins are primarily on the middle decks. Most are 20 square metres with windows and flexible sleeping arrangements, as well as a TV and a bathroom with a shower. Larger cabins on lower and middle decks are 19 - 23 metres

squared with flexible sleeping arrangements, a double bed that can be divided into two single beds (some with a sofa bed) and a TV.

XT/XTD - Arctic Superior Cabins

Arctic Superior cabins are comfortable and roomy and have a balcony. These are high-deck cabins with a balcony. The spacious cabins are of different sizes with flexible sleeping arrangements (some with sofa beds), TV, kettle, tea and coffee.

ME - Expedition Suite with Balcony

The suites are spacious cabins with a fantastic layout, including expansive windows and a balcony. The suites feature flexible sleeping arrangements with a comfortable sofa and sitting areas, as well as a TV and a bathroom with a shower. Expedition Suites are exclusively on the upper and middle decks. Expedition Suites include a bathrobe, an espresso maker and more. An exciting welcome gift awaits all suite guests in their cabin.

Please note:

- *Cruise timetables are subject to change.*
- *Some cruise cabins may have restricted views, based on availability.*
- *Cruise cabins are booked on a guaranteed basis and are assigned by the cruise line prior to departure. Your cruise cabin number will be reflected in your final documents.*

Cruise Arrival & Departure Times

Please keep in mind that the provided cruise arrival and departure times are approximate and will be finalised upon receipt of your cruise tickets.

Accommodation

Accommodation Used

Itinerary 1 & 2: 4-Star Properties (Self-Rated)

- Lima, Peru: Hotel Jose Antonio Lima or similar
- Sacred Valley, Peru: San Augustin Monasterio de la Recoleta or similar

- Aguas Calientes, Peru: Hatun Inti Boutique Machupicchu or similar
- Cusco, Peru: Hotel Jose Antonio Cusco or similar
- Buenos Aires, Argentina: Grand Brizo Hotel or similar
- Buenos Aires, Argentina: Hotel NH Buenos Aires Tango or similar

Itinerary 2 Only: Speciality Accommodation

Amazon Jungle: Corto Maltes Amazonia or similar

Please note: Accommodation/rooms offered are based on a lead-in room type and are subject to availability based on seasonality. In the instance a property is not available, a similar standard of accommodation will be provided. Properties will be confirmed and included in your travel pack, which you will receive 4-6 weeks before travel.

Extra Nights

Not available.

Please note: If you are interested in booking additional nights of accommodation pre or post-tour, please wait until you receive your travel documentation approximately 4-6 weeks before departure for the confirmed list of hotels. If booking your own additional accommodation directly with the hotel, please be aware that you may be required to change rooms at the start/end of your tour.

Maximum Room Capacity

2 people.

Triple Share

Not available.

Bedding Configuration

Twin or double (subject to availability).

Optional Tours/activities

Itinerary 1

- Day 4: Express Inca Trail Trek - \$620 per person
- Day 7: Maras & Moray Tour - \$90 per person
- Day 7: Rainbow Mountain Trek - \$185 per person

Important Information

- Day 7: Folklore Show & Dinner - \$50 per person

Itinerary 2

- Day 6: Express Inca Trail Trek - \$620 per person
- Day 9: Maras & Moray Tour - \$90 per person
- Day 9: Rainbow Mountain Trek - \$190 per person
- Day 9: Folklore Show & Dinner - \$50 per person

Please note:

- *The optional tours listed above must be purchased on checkout or over the phone before submitting your passenger information form (subject to availability).*
- *Some tours or shore excursions require minimum numbers to operate.*
- *Shore excursions can be booked/reserved directly with the cruise line before travel (subject to availability)*
- *Shore excursions can also be booked whilst onboard (subject to availability).*
- *Shore excursion programmes and itineraries may vary depending on local conditions and/or any unforeseen events concerning the timing on the day of the tour. Some excursions are very popular, and therefore availability cannot always be guaranteed, it is advisable to book in advance to avoid disappointment.*

Exclusions

- Visa fees and requirements
- Domestic transfers and flights not stated in the deal offer
- Meals/beverages not stated in the deal offer
- Optional gratuities/tipping
- Optional activities/tours
- Personal expenses
- Travel insurance
- Any costs associated with an interruption to your tour as a result of an airline schedule change or cancellation
- Mandatory city tax

Gratuities/tipping

Land

Gratuities (tips) are not included for the services of the tour leader (when available) and driver throughout the tour. The recommended tip is \$8 - \$10 USD per person per day. This covers the guide/leader and the driver and will be collected on tour.

Please note: Tipping for services provided is always a matter of personal discretion; however, please be aware that many locals consider tipping part of their normal remuneration, and they may approach you for payment; there's no need to be intimidated by the request.

Cruise

It is not standard practice to tip on Hurtigruten ships, but if you feel that certain crew members should be rewarded for providing exceptional service, there are tip boxes in the restaurant together with envelopes.

Other Important Information

What To Pack For An Expedition Cruise

To make packing a bit easier, Hurtigruten has drawn up a packing list. If you should forget something, don't worry! On board all the ships you will find a shop with a wide range of clothes and practical items.

- Onboard it's smart to wear ordinary shoes.
- Bring a memory card with a large capacity – there are sockets in the cabins to recharge photo equipment.
- The dress code aboard the ship is relaxed and casual and you are not expected to dress formally for meals.
- Extra shoelaces are also a good idea.
- Bring a good pair of binoculars.
- A small waterproof backpack is necessary for carrying essentials.
- Please remember to bring your passport and a copy of it.
- Sun protection.
- Sunglasses with UV filter lenses.
- Lip balm with UV protection. Dry, cold wind and sun often cause chapped lips.
- Money in the correct currency. Remember, the ships also accept several credit cards.
- Remember to bring sufficient

medication to last through any unforeseen delays.

- You will receive a wind and water-resistant parka as a memento on this ship (or another piece of HX kit).
- Rubber boots are available on loan, at no extra cost.

Expeditions To Polar Waters

- Warm winter jacket
- Wind and water-resistant trousers long thermal underwear and a top (we recommend wool)
- Warm cap or headband
- You should also bring swimwear for use in our on-deck whirlpools
- A scarf or fleece tube
- Warm woollen jumper and fleece jumper/jacket, remember layers are essential
- Sunglasses with UV filter lenses
- Gloves and mittens, fleece and wool
- Warm socks
- Bring extra batteries for your camera, as battery life is shorter in cold areas
- Shoes with good soles are recommended for outdoors, on deck, and for excursions ashore. Make sure they are worn-in walking boots.

TOUR GUIDE VS. TOUR LEADER

Tour Guide

Often locals with intimate knowledge of an area, its culture, and history. Their role entails providing commentary, routing the tour, and seeing that people have a good time. They are a licensed, qualified expert who supplies specific information on the history, art, architecture and culture of the city/village/attraction where they are guiding the tour. The guide meets the group at the required place and leaves it at the end of the tour; they do not travel with the group.

Tour Leader

An experienced person tasked with ensuring the smooth operation of tours, as well as providing practical support to passengers throughout the whole trip. Their role primarily includes assisting with accommodation, transportation between

Important Information

locations, and communication with tour guides at each stop. A tour leader may provide general guidance around a city or village and offer information on the place visited on the bus. However, they are not required to have specific art, architecture, or historical knowledge. They are not allowed to provide a guided tour or commentary of a city/village/attraction once there and, if caught doing so, can be fined.

Please note: Tour leaders/guides are not a standard inclusion in all travel offers. Tour leaders/guides will only be made available when required to enhance the experience of the destination featured.

CLIMATE & AVERAGE TEMPERATURES

Lima, Peru

Lima is usually described as mild and warm throughout the year without much noteworthy rain, making Lima one of the driest capitals in the world. The average temperatures range from 18°C to 28°C.

Cusco, Peru

Cusco, located in the Andes Mountains of Peru, has a highland climate with distinct dry and wet seasons. The city's elevation, approximately 3,400 metres above sea level, contributes to its cooler temperatures.

Dry Season (May to October)

This period is considered winter in Cusco and is characterised by dry and sunny weather. Days are generally clear, and temperatures can range from around 10°C to 20°C. However, nights can be quite chilly, with temperatures dropping to around 0°C.

Wet Season (November to April)

Cusco's wet season coincides with the summer months. During this time, there is a higher chance of rainfall, and the weather can be more unpredictable. Daytime temperatures are still mild, ranging from 12°C to 18°C, but nights are relatively milder compared to the dry season.

It's important to note that due to its high

altitude, Cusco's weather can vary significantly throughout the day. Visitors are advised to bring layers, including warm clothing for cooler evenings and mornings, as well as sun protection for the strong mountain sun during the day.

Buenos Aires, Argentina

In December, average temperatures in Buenos Aires range from 18°C to 29°C with gentle breezes. January is considered the hottest month in Buenos Aires, and temperatures can range from 20°C to 30°C. You can expect to experience 14-15 hours of clear and sunny skies during these months and mid to high humidity.

Seasons in Antarctica

Antarctica only has two seasons which are summer and winter. Because it's located in the southern hemisphere, Antarctica's summer is from October to February.

During this time, the sun is almost always in the sky. Days rapidly get longer there in summer, until, eventually, the sun doesn't set at all. This phenomenon is called the Midnight Sun. Although there are multiple places in the northern hemisphere that experience this perpetual sunlight during half of the year, Antarctica is the only southern location where it can be seen.

January is the warmest month in Antarctica, during which average temperatures climb all the way up to 0 degrees in the Antarctic Peninsula. However, the average temperature ranges from -10 degrees celsius to -60 degrees, depending on how far into the continent you travel.

If anyone is in Antarctica once winter comes, they're staying until summer returns. Flights and ships cease travel to and from Antarctica once the weather starts to turn, as conditions become too treacherous for travel. Typically, researchers are the only people who brave the Antarctic night. This is a valuable time for astronomers, who can use complete darkness to get spectacular views of the universe. Climatologists are also busy during this time of year tracking and comparing the temperatures on and below the continent's surface.

Late Summer Cruising In Antarctica

February - March

If you choose to go on an Antarctica cruise in February or March, you will be seeing the continent during its late summer period. This provides a variety of benefits, including the ability to explore more thoroughly as the ice melts and breaks apart, allowing for a high chance of seeing whales on the Peninsula.

What Whales Might You See?

Late summer is the best time to see whales in Antarctica. It is most common to see Humpback whales, minke whales and killer whales, though it's possible to see many other species as well. These can include blue whales, fin whales, sei whales, southern right whales and sperm whales.

What About Penguins?

By March, those adorable penguin chicks are growing up. They begin to fledge and grow into their adult feathers, while their parents may already have gone out to sea to begin to prepare for their own moulting season.

Why Go During This Season?

If you're an explorer who wants to see as much of Antarctica as possible, choose a late-summer cruise. As the polar ice melts, you'll have access to points much farther south than you would during other travel seasons. You will certainly see some wildlife, as well, and will get to know the untouched majesty of Antarctica in this particular form.

Weather

We always suggest referring to an online source for the most up-to-date weather information for your destination/s.

FLIGHTS

Seat Selection & Frequent Flyer Points

We do not arrange seat selection. It is essential to highlight that some airlines do not allow pre-selected seats. We strongly suggest you contact the airline directly with seating allocation requirements and/

Important Information

or arrive at the airport earlier to arrange your seating. While we do not add frequent flyer member details to bookings, you can do this directly with the airline once you have your flight information.

Passport Validity

Customers must provide valid passport details either at the time of purchase or no later than 45 days before the departure date. Failure to do so may result in the cancellation of the booking. Customers will be responsible for any costs and fees incurred in this instance.

CRUISE

Embarkation/Disembarkation

- Begins approximately 2 hours after docking.
- Due to security reasons, all guests must be on board 2 hours before sailing.
- Itineraries are subject to change at any time without notice.
- Check your specific sailing for exact departure and arrival times. All times are local to the port.

Please note: Strict Covid-19 terms may also apply regarding proof of insurance covering Covid-19 and/or vaccination. Please refer to the cruise lines' terms and conditions for further information before boarding.

Cruise Loyalty Discounts

Please note: Travellers must contact the cruise line directly upon receiving their travel documents in order to request any membership benefits they may be entitled to.

COACH TOUR

Meals

For meals not included, the tour leader (when available) will offer assistance with reservations, suggestions and directions to local restaurants. It is your responsibility to notify us of any dietary requests/requirements.

Please note: We will do our best to meet your requests/requirements; however, we cannot guarantee that we will always be able to.

Luggage

You will be responsible for all your personal belongings whilst on tour. You must carry your own luggage from the vehicle to the hotel room and back to the vehicle. The driver will assist with the uploading and unloading of bags from the vehicle.

OTHER

Mobility

If you require wheelchair access please contact our friendly sales and service team to inquire on your behalf.

Fitness Level Required

Adventure (and spontaneity) create some of the best travel memories. Bear in mind, your home schedules and timings might not be adhered to on tour - it's all part of the fun!

A moderate level of fitness will be required. Expect a moderate pace of touring with a focus on guided tours that may include full days with extended activity, guided city tours or nature walks. You will require a general level of fitness for unassisted navigation of stairs and inclines, longer distances with possible periods of standing when visiting sites, walking on sloping, uneven ground or elevations. You will be responsible for your own luggage and have the ability to board all modes of transport without assistance.

Please note:

- *Many areas may be inaccessible to wheelchairs or mobility scooters, where the unassisted use of personal walking sticks and other aids may be required. Although some assistance may be available, every traveller should be self-reliant during all aspects of their travel.*
- *It is expected that every traveller must be self-reliant and able to undertake all aspects of their own travel. Please speak to your booking agent about your personal circumstances and any assistance requirements to ensure this tour is right for you.*

- *If you have any concerns, please consult your healthcare provider prior to purchase/travel.*

High-Altitude Illness

Altitude illness occurs when there is a lack of oxygen in the air at high altitudes. Altitude illness will affect some travellers, with no apparent regard to age, gender or physical condition. If you have any concerns please consult your healthcare provider prior to purchase/travel.

Please note: Inoculations may be required to enter the country visited, along with re-entry into Australia after your visit. It is your responsibility to consult with your travel doctor for up-to-date medical travel information well before departure.

Yellow Fever

A valid international certificate of vaccination against Yellow Fever is required in many countries. You may need to present this on arrival at the airport or border crossing. Some countries will refuse entry if you are unable to present your certificate. It's also common for your home country to request a Yellow Fever certificate upon arrival. You must check with your doctor well before leaving home about the Yellow Fever requirements for the countries you'll be visiting.

Express Inca Trail Trek & Rainbow Mountain Trek Optional Activities:

Active/demanding are more strenuous activities, suitable for a good fitness level and for guests who exercise regularly. More fast-paced activities and walking on uneven surfaces. A high fitness level is required to undertake activities, which include high-altitude trekking for anywhere between four to seven hours per day for an extended number of days. Recommended for active travellers with some previous trekking experience.

Please note: If you have any concerns, please consult your healthcare provider prior to purchase/travel.

Sightseeing

Important Information

Please note: If entry to a site is affected by changes in operating hours or public holiday closures, your itinerary, where possible, may be adjusted, or a similar activity will be offered in its place (subject to availability).

Shopping

Shopping overseas can be a daunting and confusing experience, especially when there is a language barrier. Please be very cautious when foreign currencies and prices are involved. If paying by credit card, please pay close attention to the amount you are being charged and keep all your receipts. Do not make any purchases you are not comfortable with or feel pressured into. If you are uncertain or need assistance with the language barrier, please seek assistance from your Tour Guide/Leader. Please refer to our [Terms and Conditions](#) regarding shopping for further information.

Visas

Peru

Tourists don't need a visa. You can get a permit to stay for up to 3 months when you arrive. You may need a valid yellow fever vaccination certificate to enter Peru. Some airlines may want to see one when you leave. If you've visited Peru in the previous 6 days, you'll need a valid certificate to enter Australia.

Argentina

As a tourist, you can stay for up to 90 days without a visa, but you'll need evidence that you intend to depart the country within the 90 days, along with the following:

- A return or onward ticket and valid passport.
- Travel/medical insurance.

Please note: Officials may also ask for proof of accommodation and evidence that you have enough money or a credit card to cover your trip.

Please Note: Effective immediately, all international travellers to Argentina must hold valid travel insurance with medical coverage.

This insurance may be requested and verified upon arrival in the country. Argentina's public healthcare system will no longer provide free medical services to foreign nationals. It is therefore essential that you obtain appropriate insurance before your departure.

Chile

If you are travelling to Chile, you must obtain your visa before you arrive in Chile. The application process can be lengthy, so allow yourself enough time before your planned travel. If you arrive in Chile without a valid visa, you won't be able to pass the immigration point, and you'll be sent back to your last port of departure. You won't be able to obtain a visa at the airport or border entry point.

To enter Chile, Australian citizens must obtain a visa before arrival: [SAC Sistema Atención Consular - Ciudadanos](#)
Please reach out to the Chilean consulate for any visa requirements.

United States (Transiting)

If travelling on an Australian passport, an ESTA (visa waiver) for the USA is a strict requirement when travelling to or flying through the USA. Once a USA ESTA visa waiver is issued it is valid for 2 years or until your passport expires (whichever is sooner) and will allow multiple entries into the USA. For information on ESTA eligibility or to apply, please visit: <https://esta.cbp.dhs.gov/esta/>

Please note: Due to recent changes to USA immigration policies, TripADeal recommends all travellers visit US Customs & Border Protection.

Important:

- *Please start arranging your visa three weeks before departure to account for any delays due to consulate operating hours.*
- *Visa rules are subject to change. Please check with the nearest embassy, consulate or immigration department of the destination/s you are visiting once you receive your travel documentation to ensure you have the most up to date information.*

- *It is your responsibility to be travel-ready and ensure that you are aware and comply with any destination or travel requirements, including the validity of all required travel documents.*
- *Passengers who are not Australian citizens must also check with the respective consulate or visa agency to determine what their visa requirements are and what personal identification is required.*
- *It is also important to note that some areas of employment, such as journalism, government authorities and charity organisations, may have additional restrictions in applying for visas. This may, in turn, affect the type of application required.*

New Zealand (Transiting)

If you do not hold an Australian passport you may be required to obtain a transit visa. Some flight routes make a stop in New Zealand and you may be required to obtain a transit visa to board your flight. It is the passengers' sole responsibility to seek advice on the correct visa and take appropriate action to ensure they have the correct visa prior to departure. Failure to do so may result in denied boarding and or refusal of entry to the country by the local authorities and immigration department. We strongly advise you to carefully review your flight tickets and then contact your respective consulate or a visa agency to confirm the necessary visa regulations and acceptable forms of personal identification for your transit.

Travel Insurance

Embarking on your next trip is exciting, and while you hope the unexpected does not happen, it is best to be prepared. We strongly recommend you take out travel insurance when making your booking. Whether it's a potential medical emergency, a flight cancellation, a delayed suitcase, or an unforeseen event, it's important to ensure you're adequately protected. For more information or advice visit <https://www.tripadeal.com.au/travel-insurance>

Important Information

Schedule Of Fees

Voluntary Changes

This includes booking changes requested by you, including but not limited to those changes requiring an airline ticket or a Purchase Confirmation reissue.

- Changes - \$100 per booking and any additional charges applied by the airline/cruise company/accommodation/other travel providers.

Name Changes Due To Passenger Error

- If the incorrect name has been provided, charges of \$100 per booking and any additional charges applied by the airline/cruise company/accommodation/other travel providers.

Supplier Fees

In the event the tour package you have purchased is unable to proceed, and/or a Travel Supplier is unable to fulfil the tour due to external circumstances (Limitation of Liability e.g. a Force Majeure event), there may be a fee or amount of money that is withheld by our Suppliers and is unrecoverable. This may be due to non-refundable airline tickets, cancellation penalties with cruise cabins or unrecoverable payments with our land/accommodation partners. If refunds are not available from Suppliers, we will endeavour to obtain a travel credit on the best terms available and communicate these outcomes to you. In the event we are unable to obtain a refund or travel service credit, or part thereof, this cost is passed on to the customer as a Supplier Fee.