



# Seabourn Ultimate Antarctica

SEABOURN PURSUIT • VENTURE

## The Offer

Embark on the journey of a lifetime with a luxury cruise to the heart of Antarctica with Seabourn. This extraordinary voyage offers unparalleled opportunities to explore the pristine beauty and remote wilderness of the White Continent in supreme comfort and style.

Your journey begins in Buenos Aires where you'll enjoy time at leisure in the vibrant capital of Argentina. This is your chance to see street performers at the San Telmo Market, wander the trendy neighbourhood of Palermo Soho and visit the historic Plaza de Mayo. You'll then board the ultra-luxury Seabourn 'Pursuit' or 'Venture' ship which offers an intimate cruising experience with just 264 guests. Indulge in multiple world-class dining and culinary experiences, sip premium spirits and fine wines, and soak up the Antarctic landscape from the elegant outdoor jacuzzis. Learn something new from the 24-person expedition team, access the ship's sophisticated command centre with an open bridge and more.

Enjoy your days savouring caviar on the ice, witnessing the awe-inspiring wildlife of Antarctica with a pair of Swarovski Optik binoculars and participating in guided excursions with

knowledgeable naturalists. You'll be awe-struck as you cruise past towering icebergs, majestic glaciers and dramatic mountain ranges.

Bring home stories you'll never forget with return international full-service flights, return internal flights, a 10-night luxury expedition cruise with Seabourn, 4 nights of 5-star hotel accommodation, 32 gourmet meals and more.

**Want more? Upgrade to a Penthouse Suite while cruising plus add extra days to your itinerary with Arrive Early and Stay Behind options in Buenos Aires, Argentina.**

Offer available for a limited time or until sold out. TRIP A DEAL PTY LTD: 50149240433

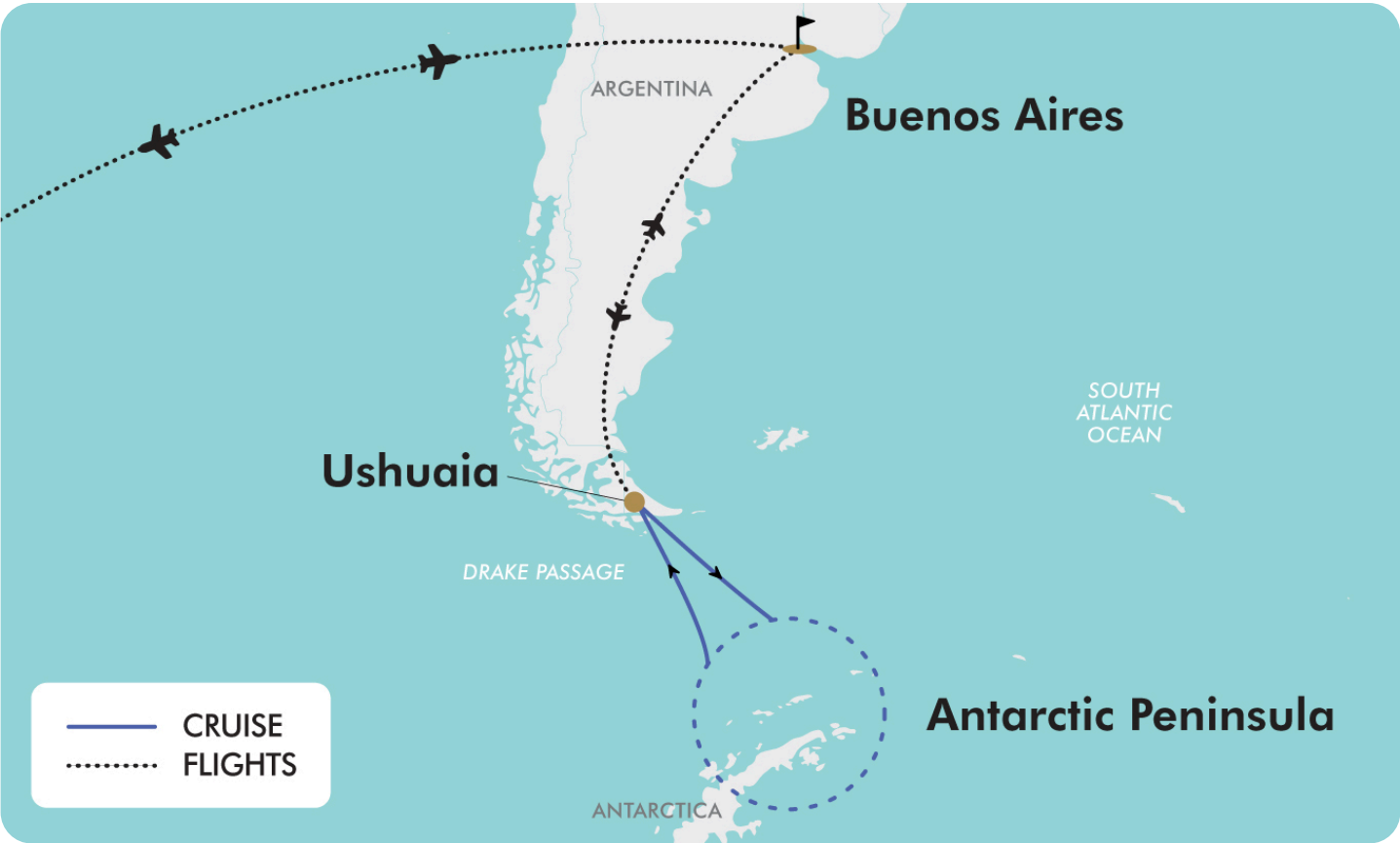
Updated: 02 Jan 2026 14:54:44

Have a question about this deal? We're here to help.  
Call our friendly team on 1300 158 912



17-DAY CRUISE PACKAGE | SEABOURN ULTIMATE ANTARCTICA

The Map



Offer available for a limited time or until sold out. TRIP A DEAL PTY LTD: 50149240433 Updated: 02 Jan 2026 14:54:44

Have a question about this deal? We're here to help.  
Call our friendly team on 1300 158 912





## 17-DAY CRUISE PACKAGE | SEABOURN ULTIMATE ANTARCTICA

### The Itinerary

#### Day 1 Australia (or New Zealand) - Buenos Aires, Argentina

Today, at the appropriate time, make your own way to the airport to board your flight to Buenos Aires, Argentina. Upon arrival in Buenos Aires, you'll be welcomed and transferred to the hotel. Once you're settled in, this exciting city is yours to explore.

Buenos Aires is one of the largest cities in Latin America, with a wide range of cultural offerings and stunning sights. Let yourself be seduced by its beautiful busy streets with its unique mixture of European and Latin cultures. With time at leisure, you can enjoy grand European palaces, quaint cafés and abundant parks.

*Please note: Due to flight times and scheduling some customers may be required to depart Day 0. Flight times will be confirmed on your final documentation which you will receive at least 4-6 weeks prior to departure.*

**Overnight: Alvear Palace Hotel (or similar)**

**Meals included: In-Flight**

#### Day 2 Buenos Aires - Ushuaia - Embark 10-Night Seabourn Cruise

This morning you'll be picked up and transferred to Buenos Aires airport for your internal flight to Ushuaia, the southernmost city in Argentina. Due to its location near the South Pole, it has approximately 18 hours of sunlight in the summer and only around 8 hours in winter. However, this does not prevent tourists from visiting as Ushuaia offers pristine places at "the world's end".

A transfer is provided from Ushuaia airport to the cruise port to commence embarkation on Seabourn's 'Seabourn Pursuit' ship. Once aboard, this stunning luxury ship is yours to explore.

**Overnight: Seabourn Pursuit or Seabourn Venture**

**Meals included: Dinner**

#### Day 3 Cruising

Make the most of today by spending time in the Bow Lounge, located on Deck 6 at the forward-most part of the vessel. The Bow Lounge provides the closest access to water level via the foredeck, making it the perfect spot to watch for marine life. Within a few steps, you can be outside with a vantage point that's ideal to watch the ship's course, see the ice sloughing off the bow at the waterline and take in the beautiful natural scenery.

The Bow Lounge introduces some technological enhancements, providing touch screens showing the ship's plotted location as well as navigational charts and scientific information. Large screens project live footage from mounted cameras outside the ship and from a drone when conditions permit, while the touch screen monitors invite guests to explore on their own with a live map, weather information and notes detailing upcoming expeditions. Expedition team members will be available within the Lounge throughout the day to interact with guests, answer questions, provide interpretation and aid in spotting wildlife.

**Overnight: Seabourn Pursuit or Seabourn Venture**

**Meals included: Breakfast; Lunch; Dinner**



## 17-DAY CRUISE PACKAGE | SEABOURN ULTIMATE ANTARCTICA

### The Itinerary

#### Day 4 Cruising

Today you could enjoy in-suite dining from a varied menu that's available around the clock for service in your suite. You may also order dinner from The Restaurant menu and have your meal served, course by course, in your suite or on your veranda. Alternatively, the ship boasts multiple world-class dining and culinary experiences that rival the finest restaurants anywhere. This gives you many choices of mouthwatering delicacies so you can choose where, when and with whom you wish to dine. You'll also be able to savour complimentary premium spirits and fine wines available on board at all times.

**Overnight:** Seabourn Pursuit or Seabourn Venture  
**Meals included:** Breakfast; Lunch; Dinner

#### Day 5 Antarctic Experience

Nestled amidst the awe-inspiring glaciers, colossal icebergs and snow-clad islands, the Antarctic Peninsula stands as the quintessential backdrop for any Antarctic expedition. It's here that most visitors to the White Continent find themselves living out their ultimate polar adventure. This region, the most readily accessible part of Antarctica, not only accommodates various scientific research bases but also showcases some of the planet's most captivating wildlife vistas.

**Overnight:** Seabourn Pursuit or Seabourn Venture  
**Meals included:** Breakfast; Lunch; Dinner

#### Day 6 Antarctic Experience

Nothing quite prepares you for experiencing the majesty of Antarctica. You'll be filled with wonder as you're surrounded by looming glaciers and icebergs the size of floating cathedrals. Perhaps the most surprising part of Antarctica is the silence with a stillness that's broken every so often by the local wildlife. In the Antarctic summer, that might be penguins tending to their chicks. It could also be cormorants, sheathbills and petrels wheeling through the skies. Down below it might be orcas or humpback whales feeding on the krill-rich waters. Antarctica is simply a place where nature is king and the rest of us are mere observers.

**Overnight:** Seabourn Pursuit or Seabourn Venture  
**Meals included:** Breakfast; Lunch; Dinner

#### Day 7 Antarctic Experience

Discover Antarctica on another exciting day with the Expedition Team. You'll have the opportunity to join fellow adventurers to explore possible landing sites and ice cruises. Wherever you go and whatever you do, each day will offer something different and thrilling.

**Overnight:** Seabourn Pursuit or Seabourn Venture  
**Meals included:** Breakfast; Lunch; Dinner

#### Day 8 Antarctic Experience

Depending on weather, ice conditions and reported wildlife distribution during your voyage, your captain and expedition team will program a day of discovery and adventure for you in Antarctica.







## 17-DAY CRUISE PACKAGE | SEABOURN ULTIMATE ANTARCTICA

### The Itinerary

**Overnight: Seabourn Pursuit or Seabourn Venture**

**Meals included: Breakfast; Lunch; Dinner**

#### Day 9 Antarctic Experience

Let the feeling of uncharted possibility take over as you delight in another exciting day discovering the best that Antarctica has to offer.

**Overnight: Seabourn Pursuit or Seabourn Venture**

**Meals included: Breakfast; Lunch; Dinner**

#### Day 10 Cruising

Today, indulge in all that the 'Seabourn Pursuit' ship has to offer. With a world-class 24-person expedition team on board, you'll find yourself being part of immersive experiences that will take you on a journey of a lifetime.

The expedition ship is an ultra-luxury purpose-built vessel with a PC6 ice-strengthened hull and advanced manoeuvring technology for superior stability, safety and comfort. It has more than 2,700 square metres of spacious open deck space for optimal nature and wildlife viewing. The ship also has imagery on monitors located throughout the ship that can broadcast from up to 5 kilometres away.

Make time to also experience Seabourn's signature events such as caviar on ice, a polar plunge and more.

**Overnight: Seabourn Pursuit or Seabourn Venture**

**Meals included: Breakfast; Lunch; Dinner**

#### Day 11 Cruising

Learn something new today with an open bridge that provides first-hand access to the ship's command centre and officers navigating your journey. You could then take part in daily enrichment throughout the ship with expert-led "Fireside Chats", daily recaps, lectures and a multi-functional interactive virtual bridge. The Discovery Centre, which is adjacent to the Expedition Lounge on Deck 4, acts as the teaching and academic centre for natural history and cultural programming in an environment spacious enough to accommodate all guests at one time. Each day guests can visit the venue for insightful lectures, briefings and Seabourn Conversations enrichment programming designed to help educate them throughout their expedition experience.

Audio-visual experiences will come to life through high-definition screens 2.5 metres high by 10 metres wide, showing a variety of programming to create a captivating experience that whets the appetite and creates excitement for each destination. Footage from submarine voyages will also be shown, providing an enticing look at the undersea world and the marine life that calls it home.

The card room is a great choice for the sea-loving cruiser who craves that languorous feeling of lazy leisure (subject to availability). Afterwards, head to The Club which features a cosmopolitan main room and terrace with a sky bar and two whirlpool spas. Socialise day and night as it opens for afternoon tea, then transforms into a hot dance club in the evening. For more casual alternatives for breakfast and lunch, with regionally-themed dinners and table service nightly, why not hang out at The Colonnade?

**Overnight: Seabourn Pursuit or Seabourn Venture**

**Meals included: Breakfast; Lunch; Dinner**

Offer available for a limited time or until sold out. TRIP A DEAL PTY LTD: 50149240433

Updated: 02 Jan 2026 14:54:44

Have a question about this deal? We're here to help.  
Call our friendly team on 1300 158 912





## 17-DAY CRUISE PACKAGE | SEABOURN ULTIMATE ANTARCTICA

### The Itinerary

#### Day 12 Disembark Ushuaia - Buenos Aires, Argentina

Enjoy your last morning aboard the 'Seabourn Pursuit' ship, having breakfast with your fellow explorers before getting ready to disembark.

Upon disembarkation, you will be transferred to Ushuaia for your charter flight to Buenos Aires. Upon arrival in Buenos Aires, you will be transferred to your hotel. Once settled in, this vibrant city is yours to explore.

**Overnight: Palladio Hotel Buenos Aires (or similar)**  
**Meals included: Breakfast**

#### Day 13 Buenos Aires, Argentina

Today is your day to relish at your own pace so make time to delight in the sights of The May Square or Plaza de Mayo, a pivotal and iconic square in Buenos Aires. It's a must-visit as most images of the Pink House originate from this vantage point.

Take a leisurely stroll down Avenue 9th of July (known as Avenida 9 de Julio in Spanish) celebrated as one of Buenos Aires' primary thoroughfares and renowned as the widest avenue globally. 9 de Julio Avenue offers access to numerous significant landmarks in Buenos Aires including the iconic Obelisk, the bustling Corrientes Avenue and the prestigious Colón Theater.

Why not wander through La Boca, a destination firmly etched on the bucket lists of many Buenos Aires enthusiasts? Here, you'll encounter the legendary vividly painted houses and the picturesque corner dwelling, El Caminito, both recognized as iconic landmarks of the city.

**Overnight: Palladio Hotel Buenos Aires (or similar)**  
**Meals included: Breakfast**

#### Day 14 Buenos Aires, Argentina

Buenos Aires was founded in 1580 by Spanish explorer Juan de Garay and has changed hands many times during its history. However, it's considered one of the most livable cities in South America with a vibrancy for life seen everywhere. You'll find crowded public markets, street performers dancing the tango, colourful graffiti-style street art, ultra-modern buildings, a dramatic skyline and a bustling port.

Culturally, Buenos Aires has the busiest live theatre industry in the world, outperforming New York, London and Paris. Every weekend, over 300 theatres are active with plays and productions. What are you waiting for?

**Overnight: Palladio Hotel Buenos Aires (or similar)**  
**Meals included: Breakfast**

#### Day 15 Buenos Aires, Argentina - Australia (or New Zealand)

The time has come to begin your journey back home so, at the appropriate time, you will be picked up and transferred to Buenos Aires airport for your flight home.

**Meals included: Breakfast; In-Flight**

#### Day 16 In-Transit

**Meals included: In-Flight**

#### Day 17 Arrive Australia (or New Zealand)

Welcome home! We hope you thoroughly enjoyed your Seabourn Antarctica adventure.

Offer available for a limited time or until sold out. TRIP A DEAL PTY LTD: 50149240433

Updated: 02 Jan 2026 14:54:44

Have a question about this deal? We're here to help.  
Call our friendly team on 1300 158 912







## 17-DAY CRUISE PACKAGE | SEABOURN ULTIMATE ANTARCTICA

### Tour Inclusions

#### HIGHLIGHTS

Experience luxurious surroundings while sailing through breathtaking Antarctic scenery with Seabourn\*

Explore remote destinations and scenic wonders on your Antarctic adventure with Seabourn's Zodiacs

Indulge in complimentary caviar, premium spirits, fine wines and world-class dining while cruising

Spot colonies of inquisitive penguins, majestic blue whales and pods of playful Orca whales

Look for Antarctic fur seals, Leopard seals, elephant seals, Antarctic seabirds and more

Cross the famed Drake Passage, the crossroads of the Atlantic and Pacific oceans

Join informative sessions held by expedition teams at The Discovery Centre while cruising

Learn something new from the Seabourn Conservation Program by onboard experts

Enjoy Seabourn Conversations from guest experts on arts, history, science and more

Dine on new weekly recipes and an extensive selection of fine wines at The Restaurant aboard Seabourn

\*Medical clearance is required prior to boarding for all expedition cruises to Antarctica.

#### FLIGHTS

Return international full-service flights (economy class), departure city surcharges may apply

Return internal chartered flight between Buenos Aires and Ushuaia

#### CRUISE

Enjoy a 10-night luxury expedition cruise with Seabourn

Complimentary premium spirits and fine wines are available onboard at all times

Indulge in complimentary caviar throughout your voyage

Enjoy world-class dining and culinary experiences that rival the finest restaurants

All dining venues are complimentary so you can dine where, when and with whom you wish

Welcome champagne and a complimentary in-suite bar are stocked with your preferences

Tipping is neither required, nor expected.

Make use of a complimentary Wi-Fi package with unlimited minutes, powered by SpaceX's Starlink

Take part in complimentary Signature Events such as caviar on the ice, polar plunge and more

Enjoy inclusive experiences at every stop including curated shore excursions, cultural tours, guided Zodiac cruises, hikes, nature walks, snorkelling and scuba diving

Learn from an onboard expedition team who provide narration and insight into all aspects

Take part in digital photography workshops

Wear your complimentary Seabourn expedition-grade parka and day pack

#### ACCOMMODATION

4 nights of 5-star hotel accommodation in Buenos Aires, Argentina

Offer available for a limited time or until sold out. TRIP A DEAL PTY LTD: 50149240433

Updated: 02 Jan 2026 14:54:44

Have a question about this deal? We're here to help.  
Call our friendly team on 1300 158 912



17-DAY CRUISE PACKAGE | SEABOURN ULTIMATE ANTARCTICA

Tour Inclusions

DINING

- Enjoy 32 meals, including all meals whilst cruising
- Complimentary premium spirits and fine wines are available while cruising
- While cruising, choose from multiple world-class dining and culinary experiences that rival the finest restaurants

ESSENTIALS

- Airline taxes and surcharges
- Cruise port taxes and surcharges

TRANSFERS

- Day 1: Buenos Aires airport to city hotel
- Day 2: City hotel to Buenos Aires airport
- Day 2: Ushuaia airport to cruise port
- Day 12: Cruise port to Ushuaia airport
- Day 12: Buenos Aires airport to city hotel
- Day 15: City hotel to Buenos Aires airport



# Important Information

*\*Please note: All information provided in this brochure is subject to both change and availability. Prior to purchase please check the current deal for up-to-date information. If you have already purchased this deal, the terms and conditions on your Purchase Confirmation apply and take precedence over the information in this brochure.*

## Booking Information

After purchase, you will receive a receipt and a Purchase Confirmation directing you to an online Passenger Information Form. You must complete the Passenger Information Form within 72 hours of purchase. Any special requests, preferences and optional extras MUST be clearly stated in your Passenger Information Form. Any change requested after submitting your Passenger Information Form cannot be guaranteed, is strictly subject to availability and will incur surcharges as outlined in the Schedule of Fees below.

On purchasing this Travel Offer, you are bound by the [General Terms and Conditions](#) and the specific terms and conditions outlined in this Important Information.

*Please note: All countries and territories have different entry requirements in relation to vaccinations, quarantine/isolation periods and travel restrictions. Due to the evolving nature, we would ask all of our customers to monitor, meet and adhere to the specific requirements of their intended destination(s) in the lead-up to and immediately before travel, as well as any requirements post-travel upon their return.*

## Our Policies

### Cancellation & Refund Policy

By placing a booking with us, you acknowledge the following important information:

- **we act as your booking agent:** TripADeal is a booking services provider, and curates the Travel Offers available on our website. We act as your booking agent, and we receive payment for the Booking Services as part of the booking price, however, we do not provide any of the

Travel Services (flights, accommodation, tours or other products or services) included in your booking – the Travel Services are provided by a number of third party Travel Suppliers.

- **each booking is unique:** our Travel Offers are made up of a variety of different components and are, during the booking process, uniquely tailored to suit your requirements, for example, departure dates and ports, flight and room upgrades, tour inclusions, etc.
- **changes/modifications to your booking may not be possible:** once your booking has been made, changes or modifications may not be possible, and where possible, may incur a fee. It is important to ensure that the information you provide during the booking process is accurate and up to date, and that you read the Travel Offer carefully before placing your order.
- **Travel Offers are a package:** our Travel Offers have been curated into package offerings and must be used as a package – individual components cannot be used independently of the full package offering.
- **our Travel Offers are generally non-refundable:** in order to provide great value Travel Offers, we work with a variety of Travel Suppliers to find the best deals – this often means the Travel Suppliers' offerings are non-refundable to ensure the best price. We recommend that you obtain travel insurance as soon as you make a booking with us.

To read more about our Cancellation and Refund Policy, please click [here](#).

### General Terms & Conditions

By placing your booking with us, you acknowledge and agree to our [Terms & Conditions](#), [Privacy Policy](#) and [Cancellation Policy](#).

### Offer Essentials

This travel offer is valid for travel on selected dates until 10th March 2026. This travel offer is priced per person based on a twin share.

### Single Traveller Supplement

For solo travellers, a mandatory single supplement applies. If you wish to travel solo, please call our friendly staff for availability and pricing. Additional costs will apply.

*Please note: Accommodation for single customers who are travelling on a tour or cruise package may be in a single room, depending on availability.*

### Departure Dates & Surcharges

See checkout for live dates and availability.

## Flights

### Departure Cities

Sydney, Melbourne, \*Brisbane, \*Adelaide, \*Perth or \*Auckland.

### Departure City Surcharges

- Brisbane: \$200 per person.
- Adelaide: \$200 per person.
- Perth: \$550 per person.
- Auckland: \$200 per person.

### International Full-Service Airlines

- Cabin Class: Economy Class.

*Please note: We cannot accommodate one-way flights. Travellers must take all included flights within the package, and any flights intentionally forfeited will result in later flights being subject to cancellation.*

*Please note: From Australia or New Zealand, the flying journey to your destination may take up to 35 hours, with up to 2 stops. This is provided as a guide only - actual flight duration can vary depending on availability and airline schedules. Your booking's final details will be confirmed to you via email once available.*

### Arrive Early & Stay Behind Options

Fly out and return home up to 60 days pre and post your tour dates.

#### Arrive Early

Buenos Aires, Argentina - From \$300 per person, subject to availability.

#### Stay Behind

# Important Information

Buenos Aires, Argentina - From \$300 per person, subject to availability.

*Please note:*

- **Exclusions:**

*This fee does not include extra nights' accommodation, meals or airport transfers.*

- **Cancellations & Changes:**

*Flight booking changes or cancellations after air tickets have been issued are not guaranteed and may incur additional fees and fare difference, subject to the airline cancellation and change policies. Flight changes are subject to availability at the time of booking.*

- **High-Season:**

*A high-season Arrive Early or Stay Behind can be purchased for an additional charge, subject to availability. For pricing, please refer to the cart.*

- **+ 60 days:**

*You can fly out up to 60 days before your package's start date, and/or return home 60 days after your package's end date. Should you wish to fly out or return home for more than 60 days from the tour, please contact us to request availability. Additional costs may apply.*

- **Estimated dates:**

*Your estimated departure, return, and arrival dates are all subject to availability and may vary. The confirmed schedule for all flights will be provided when you receive your flight tickets.*

- **High season surcharges apply to flights departing between the below date ranges:**

16 June 2025 - 20 July 2025  
15 September 2025 - 12 October 2025  
1 December 2025 - 31 January 2026  
3 April 2026 - 20 April 2026  
26 June 2026 - 17 July 2026  
18 September 2026 - 9 October 2026  
12 December 2026 - 26 January 2027

## Stopover Packages

- Santiago, Chile.
- Includes:
- 2, 3 or 5 nights in 4-star accommodation.
  - Daily breakfast.
  - Return airport transfers.

For pricing, please refer to the payment cart at checkout.

*Please note:*

- *When a pre and post-tour stopover is chosen, the same stopover location must be chosen each way, due to the airline used.*
- *When selecting to Arrive Early for your tour in conjunction with a Stopover Package, your fly out date from home will take place before the stopover.*
- *When selecting to Stay Behind after your tour in conjunction with a Stopover Package, your stopover will take place before your final flight home.*
- *Stopover packages are subject to availability.*
- *In the event that a purchased stopover package and a purchased preferred airline upgrade are not compatible, you will have the option to receive a refund for the preferred airline upgrade or be offered an alternative stopover city option, e.g if you choose to fly with Singapore Airlines you cannot stopover in Dubai.*
- *Blackout dates apply to flights departing between the below date ranges:*

22nd December 2025 - 2nd January 2026  
18th December 2026 - 3rd January 2027  
20th December 2027 - 3rd January 2028

## Flight Class Upgrades

Business Class: For pricing, please refer to the payment cart at checkout.

*Please note:*

- *Flight upgrades are subject to availability and pricing changes (if we cannot fulfil your request, the upgrade cost will be refunded).*
- *On any upgrade purchase, short-haul flights and domestic flight sectors are not guaranteed.*

## Missed Flights

If you fail to arrive for your outbound flight, you risk all flight and land arrangements in your destination being automatically cancelled by the airlines and land operator, respectively. Additional fees may apply to reinstate these services. If you miss your flight for whatever reason, please contact us as soon as possible to

make arrangements.

## Cruise

### Medical Disclaimer

Travel to Antarctica is physically demanding, and our Travel Suppliers require all guests to obtain medical clearance before departure even if you don't intend to disembark at Antarctica. This involves completing a medical form and may require medical clearance from a doctor, which could incur additional costs. Any guests who fail to provide the necessary medical documentation will be denied boarding.

### Seabourn Pursuit

Seabourn Pursuit is a marvel of modern luxury travel, designed to reach the most remote and coveted destinations worldwide. Constructed to PC6 Polar Class standards, it boasts cutting-edge hardware and technology for seamless operation in diverse environments. Equipped with two custom-built submarines, 24 Zodiacs, kayaks, and a 24-person Expedition Team, guests can engage in up-close wildlife encounters and enriching cultural experiences. Luxurious public and enrichment spaces, designed by renowned designer Adam D. Tihany, offer unparalleled comfort and elegance. Dining aboard Seabourn Pursuit is a culinary delight, with round-the-clock complimentary options from luxurious dining experiences like The Restaurant, The Colonnade, The Patio, Sushi in the Club, Seabourn Square and Constellation Lounge. Indulge in complimentary premium spirits, fine wines, and caviar, enhancing the onboard experience. Stay connected with complimentary Wi-Fi powered by SpaceX's Starlink. Experience once-in-a-lifetime adventures with inclusive zodiac tours, landings, and signature events like Caviar on the Ice and Polar Plunge. Wildlife sightings abound, complemented by onboard narration and insights from the Expedition Team. With inspiring enrichment programs and special guest speakers, Seabourn Pursuit promises an unforgettable journey of discovery and



# Important Information

luxury.

## Seabourn Venture

Seabourn Venture is a marvel of modern luxury travel, designed to reach the most remote and coveted destinations worldwide. Constructed to PC6 Polar Class standards, it boasts cutting-edge hardware and technology for seamless operation in diverse environments. Guests can engage in up-close wildlife encounters and enriching cultural experiences. Luxurious public and enrichment spaces, designed by renowned designer Adam D. Tihany, offer unparalleled comfort and elegance. Dining aboard Seabourn Venture is a culinary delight, with round-the-clock complimentary options from luxurious dining experiences like The Restaurant, The Colonnade, The Patio, Sushi in the Club, Seabourn Square and Constellation Lounge. Indulge in complimentary premium spirits, fine wines, and caviar, enhancing the onboard experience. Stay connected with complimentary Wi-Fi powered by SpaceX's Starlink.

Experience once-in-a-lifetime adventures with signature events like Caviar in the surf. Wildlife sightings abound, complemented by onboard narration and insights from the Expedition Team. With inspiring enrichment programs and special guest speakers, Seabourn Venture promises an unforgettable journey of discovery and luxury.

## Complimentary Gear Provided By Seabourn

- Complimentary PolarShield Parka by Helly Hansen: A state-of-the-art, custom-designed 'Two in One' hooded parka made by the leader in maritime apparel. It's windproof, waterproof and easily fits over layers. The outer shell can be worn on its own or paired with the insulating inner jacket.

- Complimentary WaterShield Waterproof Pack by Helly Hansen (included when you order your parka): A WaterShield waterproof backpack by Helly Hansen is one of the most useful items in your gear repertoire.
- Complimentary Brand Beanie by Helly Hansen (included when you order your parka).

### Please note:

- *Complimentary gear is yours to keep at the end of the voyage.*
- *Order your complimentary parka and pack at least 30 days in advance for delivery to your onboard suite.*

## Packing List Guide

You don't need a lot of gear, just the right gear and this is your "must-have" list for Antarctica.

- Base Layer - Long underwear that's breathable, mid-weight thermal tops and bottoms that provide warmth without bulk. We suggest travelling with two sets.
- Insulating Layer - Expedition tops and bottoms that's worn over your base layer and under your waterproof pants and jacket. You may wish to choose expedition weight thermals or select comfortable, insulating shirts and pants made of "state of the art" performance fabrics that move and flex with you. Warmth and insulation are key for this layer.
- Lofted, insulating "puffy" vest. While your complimentary PolarShield Parka Set includes a jacket insulated with Primaloft, you'll appreciate the versatility a similarly lofted vest adds to your adventure wardrobe. Such a vest is a wonderfully flexible piece to wear onboard, on deck or as an added layer during times of "exceptional" weather. The loft retains heat with remarkable efficiency, is feather-light and compacts for easy packing.
- Outer Layer - Waterproof pants as you'll be "ship bound" without them. Waterproof is essential (but not breathable in this instance as you don't want moisture seeping through the fabric's pores while seated in the Zodiac or sitting in a snowpack onshore). Loose fitting and wide leg width are preferred (without zippers so you can easily tuck them into your knee-high waterproof boots).
- Footwear - Knee-high, insulated, waterproof boots are provided for your use with compliments while you are onboard your expedition vessel (you are fitted and size selections are made once you're onboard). For those with special footwear needs, you may wish to rent overshoe boots which are made to be worn over your own custom, orthopaedic footwear.
- Socks - Heavyweight "over the calf" boot socks made of wool or wool blend.
- Gloves - Insulating waterproof gloves or mittens with removable liners. The liners can be worn as "stand alone" gloves/ mittens during warmer moments or when reducing bulk to hold your camera, binoculars or smartphone. You'll also need neoprene paddling gloves if you opt to have a kayak experience.
- Headwear - You may wish for an additional, versatile piece of headwear or neckwear such as a balaclava or neck gaiter. It's great to have on hand during a windy, wet or snowy weather event.
- Trekking poles: A lightweight, collapsible/ telescopic walking staff (also called a trekking pole) provides a sense of security, increased balance and confidence when walking on ice, snow and rugged terrain.
- Waterproof sacks and cases - Heavy-duty waterproof sacks and cases specifically designed to protect your smartphone, camera, film, binoculars and carry in your backpack.
- Foot/Hand warmers - To put between your feet and your socks and your hands and gloves for extra warmth.

# Important Information

- Binoculars: Compact, high-performance binoculars ensure you don't miss a thing. A pair of 8" x 26" (8 power magnification and 26mm objective diameter) is recommended for ease of viewing, travelling and packing.
- Other - It's also recommended to pack a pair of good sunglasses, glacier glasses or goggles with U.V. filter protection, sunscreen, lip balm and sunscreen.

Participating in the offered activities on this itinerary will require good mobility, generally good health, and the ability to care for oneself in all activities of daily living. Guests should be capable of negotiating uneven and slippery terrain ashore including rocks, snow and ice. At ports of call, you will embark and disembark the ship either by using a gangway or, in ports where the ship anchors in the harbour, by small rubber landing crafts (Zodiacs). In ports where Zodiacs are used guests who participate in excursions, and landings and wish to visit tender ports of call must be able to negotiate 10-12 steep internal stairs and get in and out of small rubber landing crafts (Zodiacs) with limited assistance. Due to the small nature of these landing crafts, Seabourn are not able to transport wheelchairs or scooters with guests. While every effort is made to assist guests, Seabourn hopes you understand that they are unable to provide staff members who can spend all or most of their time working with a single guest in order to address ongoing special needs. Guests who will require that level of care will need to travel with a companion who will be able to provide them with the assistance they require.

## Onboard Currency

\$ USD

## Suites

V1 Veranda Suite (Located Deck 5):  
Approximately 33m<sup>2</sup> including veranda of 7m<sup>2</sup>

Suites feature a comfortable living area; private veranda; queen-size bed or two twin beds; an extra-large walk-in closet for

expedition gear; personal safe; interactive flat-screen TV with music and movies; fully stocked bar and refrigerator; writing desk with personalised stationery; makeup vanity; spacious bathroom with double vanities, tub and shower, plush robes, slippers, hairdryer and 110/220V AC outlets.

V2 Veranda Suite (Located Decks 6 & 7):  
Approximately 33m<sup>2</sup> including veranda of 7m<sup>2</sup>

Suites feature a comfortable living area; private veranda; queen-size bed or two twin beds; an extra-large walk-in closet for expedition gear; personal safe; interactive flat-screen TV with music and movies; fully stocked bar and refrigerator; writing desk with personalised stationery; makeup vanity; spacious bathroom with double vanities, tub and shower, plush robes, slippers, hairdryer and 110/220V AC outlets.

V3 Veranda Suite (Located Decks 5 & 6):  
Approximately 33m<sup>2</sup> including veranda of 7m<sup>2</sup>

Suites feature a comfortable living area; private veranda; queen-size bed or two twin beds; an extra-large walk-in closet for expedition gear; personal safe; interactive flat-screen TV with music and movies; fully stocked bar and refrigerator; writing desk with personalised stationery; makeup vanity; spacious bathroom with double vanities, tub and shower, plush robes, slippers, hairdryer and 110/220V AC outlets.

V4 Veranda Suite (Located Decks 7 & 8):  
Approximately 33m<sup>2</sup> including veranda of 7m<sup>2</sup>

Suites feature a comfortable living area; private veranda; queen-size bed or two twin beds; an extra-large walk-in closet for expedition gear; personal safe; interactive flat-screen TV with music and movies; fully stocked bar and refrigerator; writing desk with personalised stationery; makeup vanity; spacious bathroom with double vanities, tub and shower, plush robes, slippers, hairdryer and 110/220V AC

outlets.

*Please note:*

- All suites are subject to availability, some cabins may have restricted views.
- Cruise cabins are booked on a guaranteed basis and are assigned by the cruise line prior to departure.

## Cruise Arrival & Departure Times

Please keep in mind that the provided cruise arrival and departure times are approximate and will be finalised upon receipt of your cruise tickets.

## Accommodation

### Accommodation Used

5-Star Properties (Self-Rated)

- Buenos Aires, Argentina: Alvear Art Hotel.
- Buenos Aires, Argentina: Palladio Hotel.

*Please note: Accommodation/rooms offered are based on a lead-in room type and are subject to availability based on seasonality. In the instance a property is not available, a similar standard of accommodation will be provided. Properties will be confirmed and included in your travel pack, which you will receive 4-6 weeks before travel.*

### Extra Nights

Not available at check-out.

*Please note: If you are interested in booking additional nights of accommodation pre or post-tour, please wait until you receive your travel documentation approximately 4-6 weeks before departure for the confirmed list of hotels. If booking your own additional accommodation directly with the hotel, please be aware that you may be required to change rooms at the start/end of your tour.*

### Maximum Room Capacity

2 people.

### Child Policy

- No child discounts. The full price applies to all children travelling with their parents.
- Valid for children 6 years old and over (for Seabourn Expedition Cruise).



# Important Information

*Please note: Children must be accompanied by a responsible adult 21 years old and over to travel. No unaccompanied minors are allowed.*

## Triple Share

Not available.

## Bedding Configuration

Double/Twin (subject to availability).

## Wildlife

TripADeal cannot guarantee animal sightings. Wildlife are unpredictable and factors such as weather conditions, predatory fear and animal movements can impact sightings.

## General Information

### Included Tours/Activities

Please note

- Some tours or shore excursions require minimum numbers to operate.
- Shore excursions can be booked/reserved directly with the cruise line before travel (subject to availability)
- Shore excursions can also be booked whilst onboard (subject to availability).

## Wildlife

TripADeal cannot guarantee animal sightings. Wildlife are unpredictable and factors such as weather conditions, predatory fear and animal movements can impact sightings.

- Shore excursion programmes and itineraries may vary depending on local conditions and/or any unforeseen events concerning the timing on the day of the tour. Some excursions are very popular, and therefore availability cannot always be guaranteed, it is advisable to book in advance to avoid disappointment.

## Exclusions

- Visa fees and requirements.
- Domestic transfers and flights not stated in the deal offer.
- Meals/beverages not stated in the deal offer.
- Optional gratuities/tipping.

- Optional activities/tours.
- Personal expenses.
- Travel insurance.
- Any costs associated with an interruption to your tour as a result of an airline schedule change or cancellation.
- Mandatory city tax (if applicable).

## Other Important Information

### TOUR GUIDE VS. TOUR LEADER

#### Tour Guide

Often locals with intimate knowledge of an area, its culture, and history. Their role entails providing commentary, routing the tour, and seeing that people have a good time. They are a licensed, qualified expert who supplies specific information on the history, art, architecture and culture of the city/village/attraction where they are guiding the tour. The guide meets the group at the required place and leaves it at the end of the tour; they do not travel with the group.

#### Tour Leader

An experienced person tasked with ensuring the smooth operation of tours, as well as providing practical support to passengers throughout the whole trip. Their role primarily includes assisting with accommodation, transportation between locations, and communication with tour guides at each stop. A tour leader may provide general guidance around a city or village and offer information on the place visited on the bus. However, they are not required to have specific art, architecture, or historical knowledge. They are not allowed to provide a guided tour or commentary of a city/village/attraction once there and, if caught doing so, can be fined.

*Please note: Tour leaders/guides are not a standard inclusion in all travel offers. Tour leaders/guides will only be made available when required to enhance the experience of the destination featured.*

### CLIMATE & AVERAGE TEMPERATURES

#### Buenos Aires, Argentina

In Buenos Aires, from November to February, the weather is typically warm and summery, with temperatures ranging from around 25°C to 35°C during the day. However, occasional heat waves can push temperatures higher. Nights are generally mild, with temperatures averaging between 18°C to 24°C. This period corresponds to the city's summer season, with plenty of sunshine and occasional thunderstorms. It's a great time to explore the city's cultural attractions, parks, and outdoor cafes, but be prepared for some hot and humid days, especially in December and January.

#### Ushuaia, Argentina

In Ushuaia, from November to February, you can expect varying weather conditions due to the region's southern location and proximity to Antarctica:

- November: Spring begins, and temperatures range from about 4°C to 11°C.
- December: Early summer sees temperatures increasing to around 6°C to 13°C. Days are longer with more sunlight.
- January: Midsummer brings milder temperatures, averaging between 7°C to 14°C. It's one of the warmer months but still relatively cool.
- February: Late summer temperatures continue to rise slightly, ranging from 7°C to 15°C.

This period is Ushuaia's summer season, but it remains relatively cool compared to many other places. It's a popular time for travellers seeking to explore the stunning landscapes of Tierra del Fuego and embark on expeditions to Antarctica. However, be prepared for rapidly changing weather, including rain and wind, which are common year-round in this region.

#### Antarctica

In Antarctica, from November to February, you'll experience the austral summer, with gradually warming temperatures as the season progresses:

# Important Information

- November: Early summer starts with temperatures around -20°C to -5°C, gradually becoming milder toward the end of the month.
  - December: Midsummer sees temperatures rising further, averaging between -15°C to 0°C, with extended daylight hours.
  - January: Late summer brings the warmest temperatures, ranging from -10°C to 2°C. It's the best time for wildlife viewing.
  - February: As summer winds down, temperatures remain fairly consistent with those in January, from -10°C to 2°C.
- Keep in mind that even during the summer months, Antarctica remains a frigid and inhospitable environment, with rapidly changing weather conditions, strong winds, and the potential for snow and ice. It's a unique and challenging destination, primarily visited by research teams and expedition travellers.

## FLIGHTS

### Seat Selection & Frequent Flyer Points

We do not arrange seat selection. It is essential to highlight that some airlines do not allow pre-selected seats. We strongly suggest you contact the airline directly with seating allocation requirements and/or arrive at the airport earlier to arrange your seating. While we do not add frequent flyer member details to bookings, you can do this directly with the airline once you have your flight information.

### Passport Validity

Customers must provide valid passport details either at the time of purchase or no later than 45 days before the departure date. Failure to do so may result in the cancellation of the booking. Customers will be responsible for any costs and fees incurred in this instance.

## CRUISE

### Embarkation/Disembarkation

- Begins approximately 2 hours after docking.

- Due to security reasons, all guests must be on board 2 hours before sailing.
- Itineraries are subject to change at any time without notice.
- Check your specific sailing for exact departure and arrival times. All times are local to the port.

*Please note: Strict Covid-19 terms may also apply regarding proof of insurance covering Covid-19 and/or vaccination. Please refer to the cruise lines' terms and conditions for further information before boarding.*

### Cruise Loyalty Discounts

*Please note: Travellers must contact the cruise line directly upon receiving their travel documents in order to request any membership benefits they may be entitled to.*

### Meals

For meals not included, the tour leader (when available) will offer assistance with reservations, suggestions and directions to local restaurants. It is your responsibility to notify us of any dietary requests/requirements.

*Please note: We will do our best to meet your requests/requirements; however, we cannot guarantee that we will always be able to.*

### Luggage

You will be responsible for all your personal belongings whilst on tour. You must carry your own luggage from the vehicle to the hotel room and back to the vehicle. The driver will assist with the uploading and unloading of bags from the vehicle.

## OTHER

### Mobility

If you require wheelchair access please contact our friendly sales and service team to inquire on your behalf.

### Fitness Level Required

A leisurely level of fitness will be required. Leisurely is described as light walking, including up multiple stairs, and occasional hiking, may involve uneven surfaces. Able to travel unassisted and get on and off

vehicles and small boats. Suitable for most fitness levels and mobility.

*Please note: If you have any concerns, please consult your healthcare provider prior to purchase/travel.*

### Yellow Fever

A valid international certificate of vaccination against Yellow Fever is required in many countries. You may need to present this on arrival at the airport or border crossing. Some countries will refuse entry if you are unable to present your certificate. It's also common for your home country to request a Yellow Fever certificate upon arrival. You must check with your doctor well before leaving home about the Yellow Fever requirements for the countries you'll be visiting.

### Gratuities/Tipping

#### Land

*Please note: Tipping for services provided is always a matter of personal discretion; however, please be aware that many locals consider tipping part of their normal remuneration, and they may approach you for payment; there's no need to be intimidated by the request.*

#### Cruise

Tipping is neither expected nor required on your Seabourn cruise.

### Sightseeing

*Please note: If entry to a site is affected by changes in operating hours or public holiday closures, your itinerary, where possible, may be adjusted, or a similar activity will be offered in its place (subject to availability).*

### Wildlife

TripADeal cannot guarantee animal sightings. Wildlife are unpredictable and factors such as weather conditions, predatory fear and animal movements can impact sightings.

### Shopping

Shopping overseas can be a daunting and confusing experience, especially when



# Important Information

there is a language barrier. Please be very cautious when foreign currencies and prices are involved. If paying by credit card, please pay close attention to the amount you are being charged and keep all your receipts. Do not make any purchases you are not comfortable with or feel pressured into. If you are uncertain or need assistance with the language barrier, please seek assistance from your Tour Guide/Leader. Please refer to our [Terms and Conditions](#) regarding shopping for further information.

## Visas

### Argentina

Australian passport holders are visa-exempt for a stay of up to 3 months.

*Please note: Effective immediately, all international travellers to Argentina must hold valid travel insurance with medical coverage. This insurance may be requested and verified upon arrival in the country. Argentina's public healthcare system will no longer provide free medical services to foreign nationals. It is therefore essential that you obtain appropriate insurance before your departure.*

### Chile

(For optional Santiago, Chile pre/post tour stopovers)

As of 17th September 2025 tourist visas for Chile are not required if travelling on an Australian Passport. You can stay in Chile for up to 90 days without a visa. If you're unsure whether you need a visa, contact the nearest embassy or consulate of Chile.

#### Important:

- *Please start arranging your visa three weeks before departure to account for any delays due to consulate operating hours.*
- *Visa rules may have changed since Covid-19. Some countries and airlines may require you to obtain an additional visa before arrival. Please check with the nearest embassy, consulate or immigration department of the destination you're entering.*

*Please note:*

- *It is your responsibility to be travel-ready and ensure that you are aware and comply with any destination or travel requirements, including the validity of all required travel documents.*
- *Passengers who are not Australian citizens must also check with the respective consulate or visa agency to determine what their visa requirements are and what personal identification is required.*
- *It is also important to note that some areas of employment, such as journalism, government authorities and charity organisations, may have additional restrictions in applying for visas. This may, in turn, affect the type of application required.*

## Travel Insurance

Embarking on your next trip is exciting, and while you hope the unexpected does not happen, it is best to be prepared. We strongly recommend you take out travel insurance when making your booking. Whether it's a potential medical emergency, a flight cancellation, a delayed suitcase, or an unforeseen event, it's important to ensure you're adequately protected. For more information or advice visit <https://www.tripadeal.com.au/travel-insurance>

## Schedule Of Fees

### Voluntary Changes

This includes booking changes requested by you, including but not limited to those changes requiring an airline ticket or a Purchase Confirmation reissue.

- Changes - \$100 AUD per booking and any additional charges applied by the airline/cruise company/accommodation/other travel providers.

### Name Changes Due To Passenger Error

If the incorrect name has been provided, charges of \$100 AUD per booking and any additional charges applied by the airline/cruise company/accommodation/other travel providers.

### Supplier Fees

In the event the tour package you have purchased is unable to proceed, and/or a travel Supplier is unable to fulfil the tour due to external circumstances (Limitation of Liability e.g. a Force Majeure event), there may be a fee or amount of money that is withheld by our Suppliers and is unrecoverable. This may be due to non-refundable airline tickets, cancellation penalties with cruise cabins or unrecoverable payments with our land/accommodation partners. If refunds are not available from Suppliers, we will endeavour to obtain a travel credit on the best terms available and communicate these outcomes to you. In the event we are unable to obtain a refund or travel service credit, or part thereof, this cost is passed on to the customer as a Supplier Fee.