



# Sri Lanka's Secret Paradise

SIGIRIYA ● WILPATTU NP ● ARUGAM BAY

## The Offer

Travel from coast to coast, discovering the tropical sandy beaches of the east coast, the amazing wildlife of the country's national parks and the cultural wonders of Sri Lanka in this fantastic 12-day package on a small group tour.

Arrive in Negombo and travel to Wilpattu National Park to start your adventure searching for Sri Lankan leopards, water buffaloes, sloth bears, elephants and much more on an exciting safari. As a special optional tour (not included), search for Red Slender Loris, a 22-cm nocturnal mammal with big eyes only found in this area.

Enjoy a day relaxing on the tropical beaches of Wilpattu, and join a snorkelling experience (not included) in Dutch Bay.

Travel east to Sigiriya Rock Fortress. This UNESCO World Heritage Site was the 5th-century rock citadel of King Kasyapa. The unique surroundings of this place match the exotic allure of its history, something you can sense while walking through the giant lion paws surrounding the main entrance. Back at the hotel, join an optional (not included) whale and dolphin watching on the Laccadive Sea.

Continue east and reach the Bay of Bengal for a Sri Lankan east coast experience. Start in exuberant Pasikuda, a tropical heaven where you'll relax on white beaches and the azure waters of the Indian Ocean.

Further south, you will reach Arugam Bay, an international surf spot rated as one of the best surf destinations in the world. Here you can again enjoy the local beaches, lagoons and historic temples at your own pace, as you stay here for 2 nights.

Your final stop is Galle. This picturesque city was founded by Portuguese colonists in the 16th century and expanded by the Dutch and British, who ruled it and left its mark. The lighthouse is a must-see for all visitors and will be part of your city tour. This city also offers turquoise waters and pristine beaches, so don't forget to visit Unawatuna Beach during your leisure time before flying back home.

With return international full-service flights, 10 nights in 4-star accommodation – including four seaside hotels, daily breakfast and transportation by air-conditioned vehicles on a small group tour, this will be a unique Sri Lankan experience.

Offer available for a limited time or until sold out. TRIP A DEAL PTY LTD: 50149240433

Updated: 20 May 2026 18:19:37

Have a question about this deal? We're here to help.  
Call our friendly team on 1300 158 912

1

FREQUENT  
FLYER



Trip  
aDeal



SIGIRIYA ● WILPATTU NP ● ARUGAM BAY

## The Offer

Want more? Add extra days pre or post-tour in Negombo during checkout.

Offer available for a limited time or until sold out. TRIP A DEAL PTY LTD: 50149240433

Updated: 20 May 2026 18:19:37

Have a question about this deal? We're here to help.  
Call our friendly team on [1300 158 912](tel:1300158912)

2

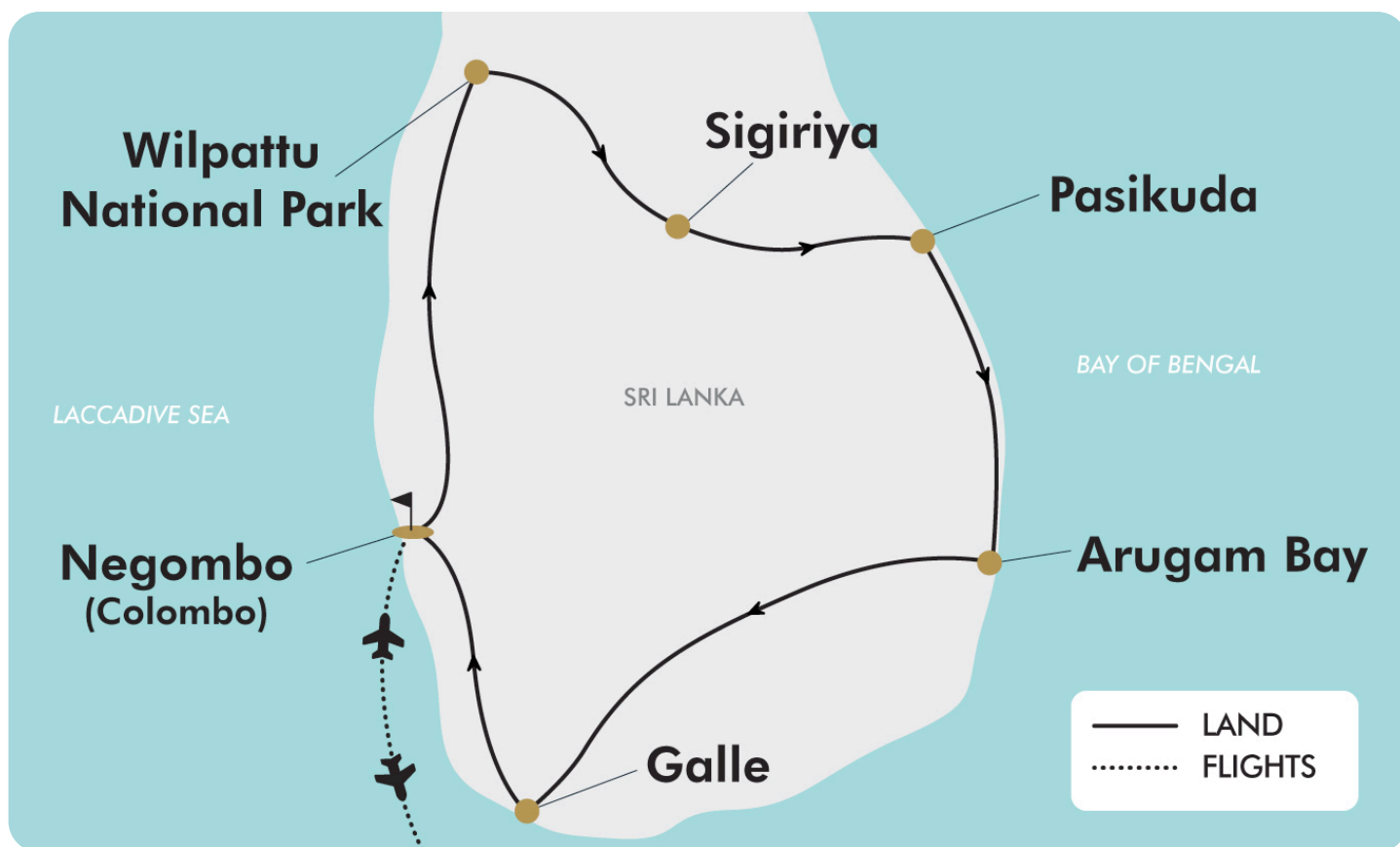
FREQUENT  
FLYER 





## 12-DAY TOUR PACKAGE | SRI LANKA'S SECRET PARADISE

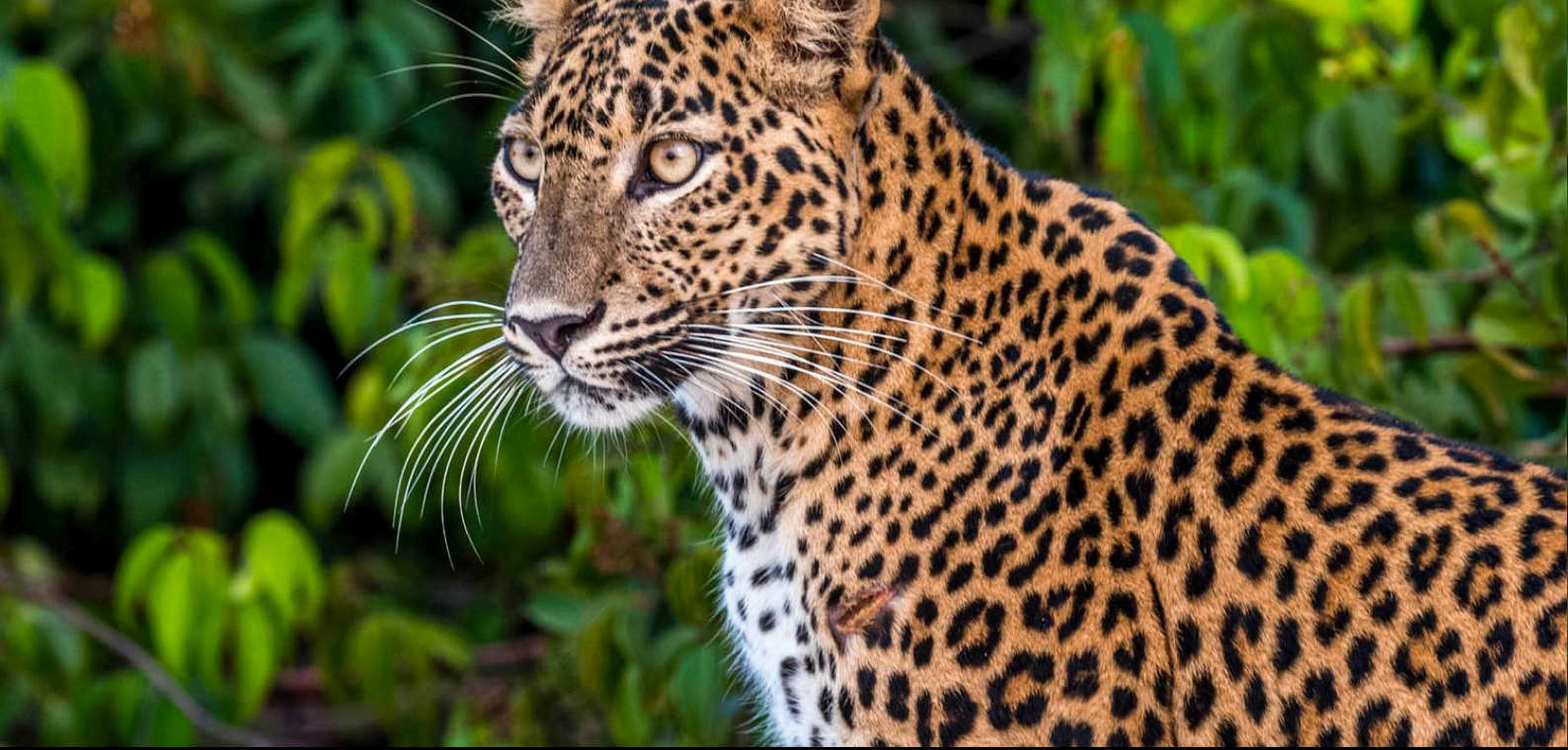
### The Map



Offer available for a limited time or until sold out. TRIP A DEAL PTY LTD: 50149240433

Updated: 20 May 2026 18:19:37

Have a question about this deal? We're here to help.  
Call our friendly team on 1300 158 912



## 12-DAY TOUR PACKAGE | SRI LANKA'S SECRET PARADISE

### The Itinerary

#### Day 1 Australia (or New Zealand) - Negombo, Sri Lanka

Today depart from Australia for Negombo (Colombo), Sri Lanka. Upon arrival be met by a tour representative and transferred to the hotel in the nearby beach town of Negombo.

**Overnight: Amagi Aria or similar, Negombo**

**Meals included: In-Flight**

#### Day 2 Negombo - Wilpattu

After breakfast at the hotel, proceed to Wilpattu. In the afternoon visit Wilpattu National Park for a safari.

This is the land haunted by big cats of the island paradise. Recording a vast number of Sri Lankan Leopards - smarter looking than its Indian cousin - Wilpattu National Park has been named due to 'Willus' (Natural Lakes) studded throughout the park. Apart from big cats & precious flora, the park is well known for a healthy population of elephant, sloth bear, spotted deer, mongoose and water buffalo. Do not be surprised if the squeal of a wild boar pierce through your ears, just observe closer and you might be presented with a fantastic hunt because it is all action that speaks at Wilpattu.

On completion return to the hotel. If you are feeling like an adventure, you may choose to take the optional excursion of "Night trekking for Loris"

Tonight you will enjoy a BBQ themed dinner, outdoors in the wilderness.

Upon completion, check in to the hotel.

Optional Activity: Night trekking looking for Loris

The hotel is surrounded by a well-preserved ecosystem, making it a home for many animal species. The Red Slender Loris is an absolute highlight out of the list, as they can only be found in Sri Lanka. They are identified as a global conservation priority due to their evolutionary uniqueness and threatened status. With their characteristic enormous eyes and long thin limbs, Loris is a small nocturnal primate that grows up to 20-22 cm and feeds on insects and berries on top of the trees. Known to be very sensitive creatures with smooth moves, spotting them requires a very quiet approach. Guided by their naturalists, you may take an adventurous night trail through the wilderness, carefully observing the tree tops. It is very important to avoid any disturbances to these amazing creatures in their natural habitat. Hence, you'll take a red light-emitting headlamp. This will keep the Loris at ease and get them to respond to you. Please see current pricing in Important Information.

*Please note: The optional tour must be booked directly to the tour operator in the currency specified.*

**Overnight: Cloud Nine Wilpattu by Aaradhya or similar, Wilpattu**

**Meals included: Breakfast; Lunch; Dinner**

#### Day 3 Wilpattu - Sigiriya

Breakfast at the hotel followed by morning at leisure. A variety of optional extras are available for you today. Take either the village cycle tour, search for whales and dolphins by boat, or set off and go snorkelling, marvelling at the wonders of the ocean.

After lunch, leave for Sigiriya and check into the hotel.

Optional Activity: Village Cycle Tour



## 12-DAY TOUR PACKAGE | SRI LANKA'S SECRET PARADISE

### The Itinerary

Experience the local vibe through the rustic roads. You will be riding through this special route, witnessing the perfect combination of scenic nature trails and local community lifestyles. Surrounded by mesmerising wilderness and people, this will be a memorable ride. Make various stops along the way. The home-based cashew-processing place and the dairy farm have always been the most popular stops of this tour. Visiting these families and seeing the process would surely be a wonderful experience for you, as much as it would be a great encouragement for them. Please see current pricing in Important Information.

#### Optional Activity: Whale & Dolphin Watching

Kalpitiya is one of the best locations in Sri Lanka to see pods of dolphin and sperm whales. Kalpitiya gives you an opportunity to watch hundreds of dolphins swimming alongside and diving under your boat, riding waves, jumping, spinning, twirling and leaping out of the water in a magical display. This is a magnificent experience you will never forget. Varieties that may be spotted are Spinner, Humpback and Bottlenose dolphins. Species of whales which may be found are Sperm whales & Orca (Killer whales). Please see current pricing in Important Information.

#### Optional Activity: Dutch Bay Snorkelling

Set sail from the peaceful village of Serakuliya, about a 30-minute drive from the resort, for a remarkable snorkelling expedition along the historic Dutch Canal, leading to the stunning Bar Reef. This unique adventure offers not just the thrill of snorkelling in clear, turquoise water teeming with rich marine life, but also the chance to encounter the majestic bottlenose dolphins on your journey. To ensuring a safe and an enriching experience, all

participants are provided with safety jackets and the tour is accompanied by expert guides who are there to enhance your understanding of the underwater ecosystem plus ensuring your comfort throughout. Dive into an unforgettable exploration of one of nature's most beautiful underwater landscapes, all under the watchful eyes of an experienced team. Please see current pricing in Important Information.

*Please note: The above optional activities must be booked directly to the tour operator in the currency specified.*

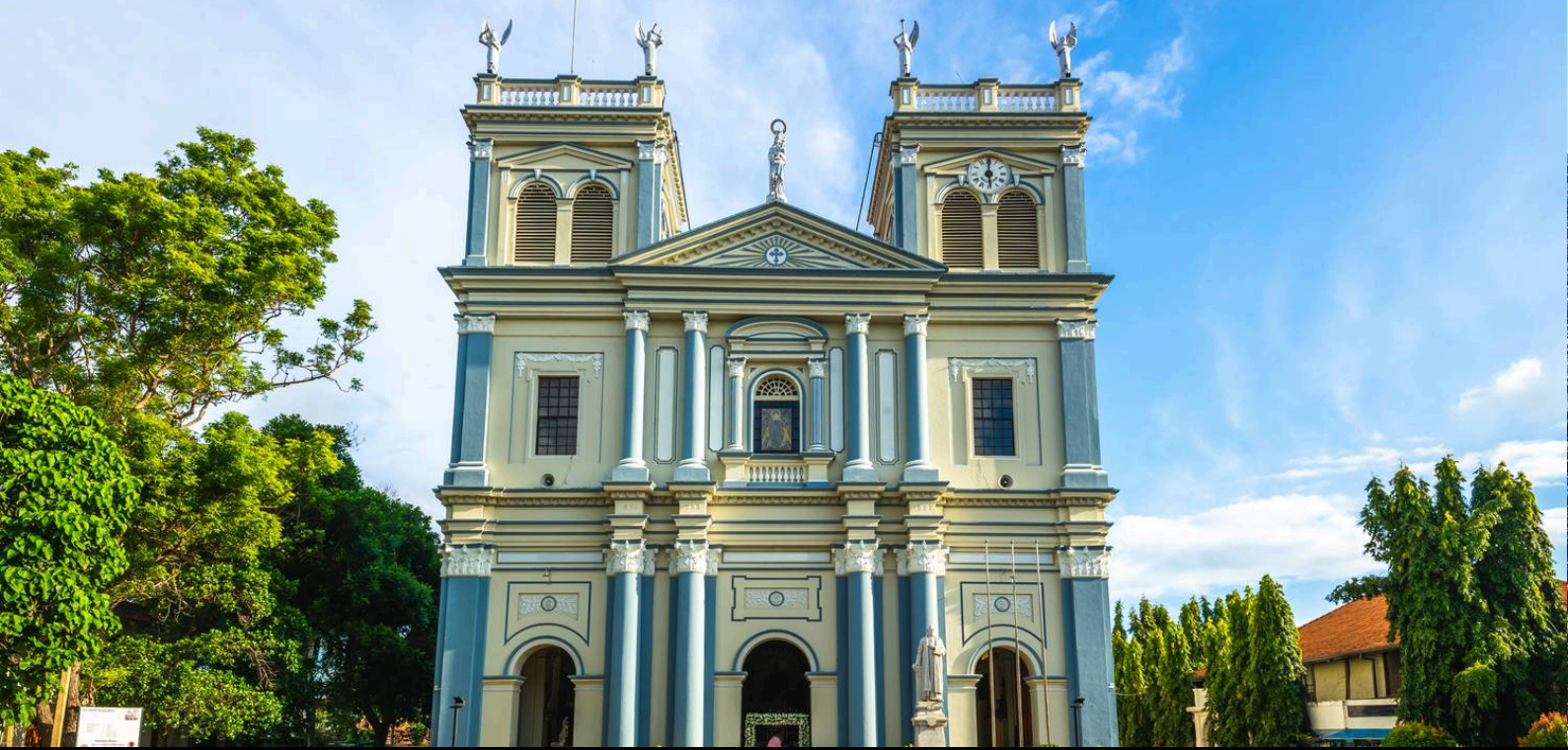
**Overnight: Tropical Life Resort or similar, Sigiriya**  
**Meals included: Breakfast**

#### **Day 4 Sigiriya**

After an early breakfast, proceed to Sigiriya to visit the magnificent Sigiriya Rock Fortress. A UNESCO World Heritage Site, Sigiriya was the 5th-century rock citadel of King Kasyapa. Step through the gigantic 'Lion Paws', overlooking the symmetrical royal gardens, to comprehend the splendour that once dominated this rock fortress. Surrounded by ramparts and moats, the Lion Rock is coated by frescoes that relate to Gupta-style paintings found in the Ajanta caves of India. Wander into the museum downstairs for an insight into how the citadel floated above citizens and learn about the advanced ponds and irrigation that pumped water right onto its summit through an ingenious hydraulic system.

After visiting Sigiriya Rock Fortress, return to the hotel. This afternoon is either at leisure or take part in an optional afternoon safari through Minneriya National Park.

Optional Activity: Minneriya National Park Jeep Safari



## 12-DAY TOUR PACKAGE | SRI LANKA'S SECRET PARADISE

### The Itinerary

Experience an afternoon safari at Minneriya National Park. If you're up for a serious rumble in the jungle, then Minneriya is the place to go! Spread over 8800 hectares, it's a sanctuary for elephants and home to herds of deer and ample birdlife, but its spotlight remains between swaying trunks and flapping ears. Park your jeep on the bank of the reservoir and switch off its engine. Have the opportunity to see herds of elephants - one by one - roll onto the grass-covered banks to feed on tender shoots. In fact, this is the largest elephant gathering in the world (over 300 at a time) - it's an absolute must-do for wildlife enthusiasts. Please see current pricing in Important Information.

*Please note:*

- *If Minneriya National Park is flooded during the rainy season, you will visit Kaudulla or Eco National Parks as alternative options.*
- *The optional activity must be booked directly to the tour operator in the currency specified.*

**Overnight:** Tropical Life Resort or similar, Sigiriya  
**Meals included:** Breakfast

#### Day 5 Sigiriya - Pasikuda

After breakfast, proceed to Pasikuda and check-in to the Hotel. The rest of the day is at leisure for you to enjoy this beautiful beachside accommodation.

**Overnight:** The Calm Hotel or similar, Pasikuda  
**Meals included:** Breakfast

#### Day 6 Pasikuda

Enjoy breakfast at the hotel. The rest of the day is yours to soak up the day at leisure.

**Overnight:** The Calm Hotel or similar, Pasikuda  
**Meals included:** Breakfast

#### Day 7 Pasikuda – Arugam Bay

Enjoy breakfast at the hotel. Following that, proceed to Arugam Bay, check-in to the hotel and relax.

Arugam bay is an international surf spot and rated in the top ten surf destinations in the world. Enjoy the local beaches, lagoons and historic temples of the area. If you are feeling up for it, why not try your hand at one of the world class surf breaks?

**Overnight:** Blue Wave hotel or similar, Arugam Bay  
**Meals included:** Breakfast

#### Day 8 Arugam Bay

After breakfast, the day is at leisure.

**Overnight:** Blue Wave hotel or similar, Arugam Bay  
**Meals included:** Breakfast

#### Day 9 Arugam Bay - Galle

After breakfast proceed to Galle.

After arrival at Galle, check-in to the hotel. The rest of the day is at leisure.

**Overnight:** Oceanfront Galle by ICC or similar, Galle  
**Meals included:** Breakfast

#### Day 10 Galle

After breakfast, enjoy a city tour in Galle.



## 12-DAY TOUR PACKAGE | SRI LANKA'S SECRET PARADISE

### The Itinerary

The epic Southern capital, Galle is the intersection where classic Dutch architecture meets a tropical setting, creating a vivid atmosphere in beauty. Walk the Dutch-haunted streets, listening to the creaking wooden saloon doors and observe how European architecture mingles with South Asian traditions today, flooding cultural enthusiasts on a global scale. Its original ramparts and bastions, preserved up to date, showcase evidence of a heritage preserved for more than 350 years. Walk clockwise within the fort to observe the 'old gate' carrying the British coat of arms. Flanking the old gate is the Zwart bastion - the oldest of all - and the lighthouse, standing 18 feet in its glory next to the Point Utrecht Bastion. This Dutch bliss is painted with streets that spread in a rectangular grid pattern pierced with houses carrying Dutch colonial style verandas. Hop into the Dutch Hospital Shopping Complex to be mesmerised by an array of souvenir selections. However, its hallmark stands a reality where the Dutch fort remains a working community with its usual buzz of administrative offices, court complex, commercial buildings, churches and Southern folks frequenting its streets bracing the air of the Elysium of architecture, Galle!

**Overnight: Oceanfront Galle by ICC or similar, Galle**

**Meals included: Breakfast**

#### Day 11 Galle - Colombo - Australia (or New Zealand)

After breakfast today, get ready for checkout and your transfer to Negombo. Since your flight will not depart until late evening, access to common areas will be provided so you may relax before transferring to Negombo in the afternoon to the airport for your departure flight home.

Today's distance and drive time is approx 120 kilometres / 3 hours.

**Meals included: Breakfast; In-Flight**

#### Day 12 Arrive in Australia (or New Zealand)



## 12-DAY TOUR PACKAGE | SRI LANKA'S SECRET PARADISE

### Tour Inclusions

#### HIGHLIGHTS

- Travel to Sigiriya, home of the ancient rock fortress
- Enjoy a sightseeing tour of the Dutch colonial city of Galle
- Feel the thrill of a Safari through Wilpattu National Park
- Discover the local beaches and lagoons of Arugam Bay
- Stay at beachside accommodation such as the Radisson Blu in Galle
- Indulge in an outdoor BBQ themed dinner in Wilpattu
- Marvel at the UNESCO world heritage Dutch Fort

#### FLIGHTS

Return international full-service flights (economy class), surcharges may apply

#### ACCOMMODATION

10 nights of 4-star accommodation

#### DINING

Enjoy daily breakfast, plus lunch and dinner in Wilpattu

#### ESSENTIALS

- English-speaking national tour guide
- Airline taxes and surcharges

#### TRANSPORT

Transportation by air-conditioned vehicles

#### TRANSFERS

Return airport transfers

# Important Information

*\*Please note: All information provided in this brochure is subject to both change and availability. Prior to purchase please check the current deal for up-to-date information. If you have already purchased this deal, the terms and conditions on your Purchase Confirmation apply and take precedence over the information in this brochure.*

## Booking Information

After purchase, you will receive a receipt and a Purchase Confirmation, directing you to an online Passenger Information Form. You must complete the Passenger Information Form within 72 hours of purchase.

Any special requests, preferences and optional extras MUST be clearly stated in your Passenger Information Form. Any change requested after submitting your Passenger Information Form cannot be guaranteed, is strictly subject to availability and will incur surcharges as outlined in the Schedule of Fees below.

On purchasing this Travel Offer, you are bound by the [General Terms and Conditions](#) and the specific terms and conditions outlined in this Important Information.

*Please note: All countries and territories have different entry requirements in relation to vaccinations, quarantine/isolation periods and travel restrictions. Due to the evolving nature, we would ask all of our customers to monitor, meet and adhere to the specific requirements of their intended destination(s) in the lead-up to and immediately before travel, as well as any requirements post-travel upon their return.*

## Our Policies

### Cancellation & Refund Policy

By placing a booking with us, you acknowledge the following important information:

- **we act as your booking agent:** TripADeal is a booking services provider, and curates the Travel Offers available on our website. We act as your booking agent, and we receive payment for the Booking Services as part of the booking price, however, we do not provide any of the

Travel Services (flights, accommodation, tours or other products or services) included in your booking – the Travel Services are provided by a number of third party Travel Suppliers.

- **each booking is unique:** our Travel Offers are made up of a variety of different components and are, during the booking process, uniquely tailored to suit your requirements, for example, departure dates and ports, flight and room upgrades, tour inclusions, etc.
- **changes/modifications to your booking may not be possible:** once your booking has been made, changes or modifications may not be possible, and where possible, may incur a fee. It is important to ensure that the information you provide during the booking process is accurate and up to date, and that you read the Travel Offer carefully before placing your order.
- **Travel Offers are a package:** our Travel Offers have been curated into package offerings and must be used as a package – individual components cannot be used independently of the full package offering.
- **our Travel Offers are generally non-refundable:** in order to provide great value Travel Offers, we work with a variety of Travel Suppliers to find the best deals – this often means the Travel Suppliers' offerings are non-refundable to ensure the best price. We recommend that you obtain travel insurance as soon as you make a booking with us. If your plans change, you can receive a full refund (excluding credit card fees) if you cancel at least 12 months in advance to your scheduled departure date.

To read more about our Cancellation and Refund Policy, please click [here](#).

### General Terms & Conditions

By placing your booking with us, you acknowledge and agree to our [Terms & Conditions](#), [Privacy Policy](#) and [Cancellation Policy](#).

## Offer Essentials

This travel offer is valid for travel on selected dates until the 7th December 2025.

This travel offer is priced per person based on a twin share.

### Single Traveller Supplement

For solo travellers, a mandatory single supplement of \$700 applies.

*Please note: Accommodation for single customers who are travelling on a tour or cruise package may be in a single room, depending on availability.*

### Departure Dates & Surcharges

See checkout for live dates and availability.

## Flights

### Departure Cities

Sydney, Melbourne, \*Brisbane, \*Adelaide, Perth and \*Auckland

### Departure City Surcharges

Brisbane and Adelaide: \$100 per person  
Auckland: \$300 per person

### International Full-Service Airline(s)

- Cabin Class: Economy Class

*Please note: We cannot accommodate one-way flights. Travellers must take all included flights within the package, and any flights intentionally forfeited will result in later flights being subject to cancellation.*

*Please note: From Sydney, Melbourne or Brisbane, the flying journey to your destination may take up to 19 hours, with up to 1 stop.*

From Adelaide, the flying journey to your destination may take up to 19 hours, with up to 2 stops. One of those stops may be within Australia.

From Perth, the flying journey to your destination may take up to 16 hours, with up to 1 stop.

From Auckland, the flying journey to your destination may take up to 23 hours, with up to 2 stops. One of those stops may be within Australia.

This is provided as a guide only - actual flight duration can vary depending on

# Important Information

availability and airline schedules. Your booking's final details will be confirmed to you via email once available.

## Missed Flights

If you fail to arrive for your outbound flight, you risk all flight and land arrangements in your destination being automatically cancelled by the airlines and land operator, respectively. Additional fees may apply to reinstate these services. If you miss your flight for whatever reason, please contact us as soon as possible to make arrangements.

## Preferred Airline Surcharge

Not available

## Arrive Early & Stay Behind Options

Fly out and return home up to 60 days pre and post your tour dates.

### Arrive Early

Colombo, Sri Lanka - From \$300 per person, subject to availability.

### Stay Behind

Colombo, Sri Lanka - From \$300 per person, subject to availability.

*Please note:*

#### ● Exclusions:

*This fee does not include extra nights' accommodation, meals or airport transfers.*

#### ● Internal Flights:

*If you select to Arrive Early or Stay Behind in a city other than the one where the tour starts or ends, the package will include an internal flight to your destination. If you wish to forfeit this flight, please advise our friendly team at the time of purchase. Please note that the cost does not change when you choose to forfeit your connecting flight.*

#### ● Cancellations & Changes:

*Flight booking changes or cancellations after air tickets have been issued are not guaranteed and may incur additional fees and fare difference, subject to the airline cancellation and change policies. Flight changes are subject to availability at the time of booking.*

#### ● High-Season:

*A high-season Arrive Early or Stay Behind can be purchased for an additional charge, subject to availability. For pricing, please refer to the cart.*

#### ● + 60 days:

*You can fly out up to 60 days before your package's start date, and/or return home 60 days after your package's end date. Should you wish to fly out or return home for more than 60 days from the tour, please contact us to request availability. Additional costs may apply.*

#### ● Estimated dates:

*Your estimated departure, return, and arrival dates are all subject to availability and may vary. The confirmed schedule for all flights will be provided when you receive your flight tickets.*

#### ● High season surcharges apply to flights departing between the below date ranges:

15 September 2025 - 12 October 2025  
1 December 2025 - 31 January 2026  
3 April 2026 - 20 April 2026  
26 June 2026 - 17 July 2026  
18 September 2026 - 9 October 2026  
12 December 2026 - 26 January 2027

## Stopover Packages

#### ● Kuala Lumpur

Includes:

- 2, 3 or 5 nights in 4-star accommodation
- Daily breakfast
- Return airport transfers

For pricing, please refer to the payment cart at checkout.

*Please note:*

- *When a pre and post-tour stopover is chosen, the same stopover location must be chosen each way, due to the airline used.*

- *When selecting to Arrive Early for your tour in conjunction with a Stopover Package, your fly out date from home will take place before the stopover.*

- *When selecting to Stay Behind after your tour in conjunction with a Stopover Package, your stopover will take place before your final flight home.*

- *Stopover packages are subject to availability.*

- *In the event that a purchased stopover package and a purchased preferred airline upgrade are not compatible, you will have the option to receive a refund for the preferred airline upgrade or be offered an alternative stopover city option, e.g if you choose to fly with Singapore Airlines you cannot stopover in Dubai.*

## Flight Class Upgrades

Business Class: For pricing, please refer to the payment cart at checkout. (Premium Economy Class is only available from Sydney, Melbourne, and Auckland).

*Please note:*

- *Flight upgrades are subject to availability and pricing changes (if we cannot fulfil your request, the upgrade cost will be refunded).*
- *On any upgrade purchase, short-haul flights and domestic flight sectors are not guaranteed.*

## Accommodation

### Accommodation Used

#### 4-Star Properties (Self-Rated)

- Negombo: Amagi Aria or similar
- Wilpattu: Cloud Nine Wilpattu by Aaradhya or similar
- Sigiriya: Tropical Life Resort or similar
- Pasikuda: The Calm Hotel or similar
- Arugam Bay: Blue Wave hotel or similar

#### 5-Star Properties (Self-Rated)

- Galle: Oceanfront Galle by ICC or similar

Please note: Accommodation/rooms offered are based on a lead-in room type and are subject to availability based on seasonality. In the instance a property is not available, a similar standard of

# Important Information

accommodation will be provided. Properties will be confirmed and included in your travel pack, which you will receive 4-6 weeks before travel.

## Extra Nights

Not available

## Maximum Room Capacity

2 people.

## Child Policy

- No child discounts. The full price applies to all children travelling with their parents.
- Valid for children 8 years old and over.

*Please note: Children must be accompanied by a responsible adult 18 years old and over to travel. No unaccompanied minors are allowed.*

## Triple Share

Not available

## Bedding Configuration

Twin or Double Bedding (subject to availability).

## General Information

Minimum group size 10, maximum group size 20 per vehicle.

*Please note: A small group tour is defined as a tour with no more than 20 travellers per vehicle.*

## Optional Tours/Activities

- Day 2: Night Trekking looking for Loris - \$25 USD per person
- Day 3: Village Cycle Tour - \$20 USD per person
- Day 3: Whale and Dolphin Watching - \$60 USD per person
- Day 3: Dutch Bay Snorkelling - \$45 USD per person
- Day 4: Jeep safari in Minneriya National Park - \$70 USD per person

*Please note:*

- *Prices are based per person, are subject to availability, time permitting and weather conditions, and are payable directly to the tour operator in the currency specified.*

- *Some tours require minimum numbers to operate.*

## Exclusions

- Visa fees and requirements
- Meals/beverages not stated in the deal offer
- Optional gratuities/tipping
- Optional activities/tours
- Personal expenses
- Travel insurance
- Mandatory city tax

## Other Important Information

### TOUR GUIDE VS. TOUR LEADER

#### Tour Guide

Often locals with intimate knowledge of an area, its culture, and history. Their role entails providing commentary, routing the tour, and seeing that people have a good time. They are a licensed, qualified expert who supplies specific information on the history, art, architecture and culture of the city/village/attraction where they are guiding the tour. The guide meets the group at the required place and leaves it at the end of the tour; they do not travel with the group.

#### Tour Leader

An experienced person tasked with ensuring the smooth operation of tours, as well as providing practical support to passengers throughout the whole trip. Their role primarily includes assisting with accommodation, transportation between locations, and communication with tour guides at each stop. A tour leader may provide general guidance around a city or village and offer information on the place visited on the bus. However, they are not required to have specific art, architecture, or historical knowledge. They are not allowed to provide a guided tour or commentary of a city/village/attraction once there and, if caught doing so, can be fined.

*Please note: Tour leaders/guides are not a standard inclusion in all travel offers. Tour leaders/guides will only be made available*

*when required to enhance the experience of the destination featured.*

**CLIMATE & AVERAGE TEMPERATURES**  
Sri Lanka is a year-round destination with two monsoon seasons so there is a lot of confusion about the best time to visit. The weather doesn't run like clockwork here! However, there will rarely be weather so dramatic that it will stand in the way of a brilliant holiday with plenty of warm weather and sunshine. The temperature is constant at around 27°C on the coast, both in the air and the water!

### FLIGHTS

#### Seat Selection & Frequent Flyer Points

We do not arrange seat selection. It is essential to highlight that some airlines do not allow pre-selected seats. We strongly suggest you contact the airline directly with seating allocation requirements and/or arrive at the airport earlier to arrange your seating. While we do not add frequent flyer member details to bookings, you can do this directly with the airline once you have your flight information.

#### Passport Validity

Customers must provide valid passport details either at the time of purchase or no later than 45 days before the departure date. Failure to do so may result in the cancellation of the booking. Customers will be responsible for any costs and fees incurred in this instance.

### COACH TOUR

#### Meals

For meals not included, the tour leader (when available) will offer assistance with reservations, suggestions and directions to local restaurants. It is your responsibility to notify us of any dietary requests/requirements.

*Please note: We will do our best to meet your requests/requirements; however, we cannot guarantee that we will always be able to.*

#### Luggage

You will be responsible for all your

# Important Information

personal belongings whilst on tour. You must carry your own luggage from the vehicle to the hotel room and back to the vehicle. The driver will assist with the uploading and unloading of bags from the vehicle.

## OTHER

### Mobility

If you require wheelchair access please contact our friendly sales and service team to inquire on your behalf.

### Fitness Level Required

A leisurely level of fitness will be required. Leisurely is described as light walking, including up multiple stairs, and occasional hiking, may involve uneven surfaces. Able to travel unassisted and get on and off vehicles and small boats. Suitable for most fitness levels and mobility.

*Please note: If you have any concerns, please consult your healthcare provider prior to purchase/travel.*

### Gratuities/Tipping

#### Land

Gratuities (tips) are not included for the services of the tour leader (when available) and driver throughout the tour. The recommended tip is 2000 LKR per person per day. This covers the guide/leader and the driver and will be collected on tour. In addition to the recommended gratuities for your dedicated tour leader and driver, a voluntary 'group kitty' may be introduced at the commencement of your tour. This optional contribution, not exceeding \$12 AUD per person for the entire trip, helps cover smaller, shared tips along the journey for local services such as bellboys, shoe minders, and safari drivers. This streamlines tipping and ensures fair recognition for those who enhance your experience.

*Please note: Tipping for services provided is always a matter of personal discretion; however, please be aware that many locals consider tipping part of their normal remuneration, and they may approach you*

*for payment; there's no need to be intimidated by the request.*

### Sightseeing

*Please note: If entry to a site is affected by changes in operating hours or public holiday closures, your itinerary, where possible, may be adjusted, or a similar activity will be offered in its place (subject to availability).*

### Wildlife

TripADeal cannot guarantee animal sightings. Wildlife are unpredictable and factors such as weather conditions, predatory fear and animal movements can impact sightings.

### Shopping

Shopping overseas can be a daunting and confusing experience, especially when there is a language barrier. Please be very cautious when foreign currencies and prices are involved. If paying by credit card, please pay close attention to the amount you are being charged and keep all your receipts. Do not make any purchases you are not comfortable with or feel pressured into. If you are uncertain or need assistance with the language barrier, please seek assistance from your Tour Guide/Leader. Please refer to our [Terms and Conditions](#) regarding shopping for further information.

### Visas

#### Sri Lanka

A tourist visa for Sri Lanka is a strict requirement if travelling on an Australian or New Zealand Passport. You will need a visa in the form of an Electronic Travel Authorisation (ETA) to enter Sri Lanka. Limited facilities to obtain an ETA are available at Colombo's Bandaranaike International Airport, however ETA's can be obtained prior to departure.

*Important: Please check with the nearest Sri Lankan embassy, consulate or immigration department for the current tourist visa requirements and any updates regarding the e-visa for Sri Lanka.*

*Please note: Please start arranging your visa three weeks before departure to account for any delays due to consulate operating hours.*

### Travel Insurance

Embarking on your next trip is exciting, and while you hope the unexpected does not happen, it is best to be prepared. We strongly recommend you take out travel insurance when making your booking. Whether it's a potential medical emergency, a flight cancellation, a delayed suitcase, or an unforeseen event, it's important to ensure you're adequately protected. For more information or advice visit <https://www.tripadeal.com.au/travel-insurance>.

### Schedule Of Fees

#### Voluntary Changes

This includes booking changes requested by you, including but not limited to those changes requiring an airline ticket or a Purchase Confirmation reissue.

- Changes - \$100 AUD per booking and any additional charges applied by the airline/cruise company/accommodation/other travel providers.

#### Name Changes Due To Passenger Error

If the incorrect name has been provided, charges of \$100 AUD per booking and any additional charges applied by the airline/cruise company/accommodation/other travel providers.

#### Supplier Fees

In the event the tour package you have purchased is unable to proceed, and/or a travel Supplier is unable to fulfil the tour due to external circumstances (Limitation of Liability e.g. a Force Majeure event), there may be a fee or amount of money that is withheld by our Suppliers and is unrecoverable. This may be due to non-refundable airline tickets, cancellation penalties with cruise cabins or unrecoverable payments with our land/accommodation partners. If refunds are not available from Suppliers, we will endeavour to obtain a travel credit on the best terms available and communicate

# Important Information

these outcomes to you. In the event we are unable to obtain a refund or travel service credit, or part thereof, this cost is passed on to the customer as a Supplier Fee.