



Madagascar Wildlife Tour

ANTANANARIVO ● AMBER MOUNTAIN NP ● NOSY BE

The Offer

Walking into beautiful waterfalls and volcanic lakes surrounded by exotic animals is not rare in Madagascar. The island nation on the southeast coast of Africa is known for amazing wildlife in its rainforests and breathtaking landscapes.

The fourth largest island in the world, Madagascar is shrouded with mystery and full of life and beauty. About 40 different species of lemur are indigenous to the island so expect to see them everywhere. You may also chance upon chameleons, exotic plants, insects, birds and more than 800 species of butterflies.

From the African, Arabic, Tamil and French influences to indigenous Malagasy culture and cuisine, you'll see them all while you travel through lush Amber Mountain National Park or the capital city, Antananarivo. Look out for lemurs, butterflies, birds, various colourful tropical flowers, invertebrates and much more in Tsingy National Park. Relax in the crystal clear waters of Nosy Be Island, explore Mandresy Cave and seek blind fish and Rousette fruit bats. These magical places will leave you with everlasting memories.

This is a travel destination that you will remember forever with return international full-service flights, 2 internal flights, 11 nights of hotel and permanent bush camps, 21 meals (including daily breakfast) and more.

Want more? Add a 3-night relaxing stay at Anelia Resort & Spa in tropical Mauritius. Relax on the sandy beaches, swim in the blue lagoons and snorkel through the colourful coral reefs before returning home.

Offer available for a limited time or until sold out. TRIP A DEAL PTY LTD: 50149240433

Updated: 10 Apr 2026 16:49:41

Have a question about this deal? We're here to help.
Call our friendly team on [1300 158 912](tel:1300158912)

1

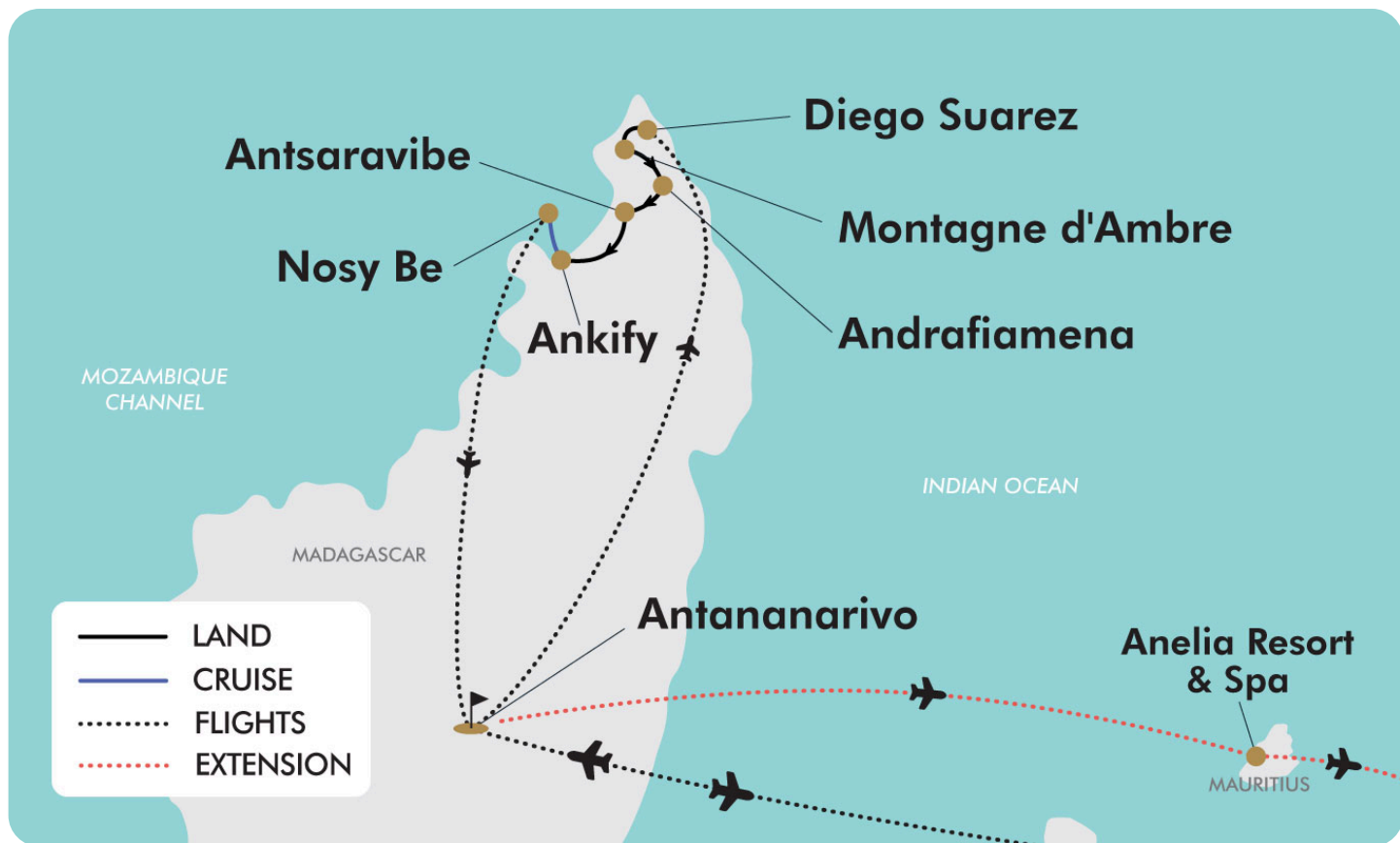
FREQUENT
FLYER 

 Trip
aDeal



14-DAY TOUR PACKAGE | MADAGASCAR WILDLIFE TOUR

The Map



Offer available for a limited time or until sold out. TRIP A DEAL PTY LTD: 50149240433

Updated: 10 Apr 2026 16:49:41

Have a question about this deal? We're here to help.
Call our friendly team on 1300 158 912



14-DAY TOUR PACKAGE | MADAGASCAR WILDLIFE TOUR

The Itinerary

Day 1 Australia (or New Zealand) - Antananarivo, Madagascar

Today fly to Antananarivo, Madagascar.

Meals included: In-Flight

Day 2 Arrive in Antananarivo, Madagascar

Today arrive in Antananarivo, Madagascar. Upon arrival, be met by an English-speaking tour leader and be transferred to your hotel. Enjoy the rest of your day at leisure exploring the capital city of Madagascar. The vibrant, alive and chaotic city of Antananarivo was founded in the 17th century and built on a series of hills, with sloping red clay houses, modern cafes, cathedrals and colonial architecture. Witness the true Madagascar lifestyle in the heart of Antananarivo.

Overnight: IBIS Hotel or similar

Meals included: None

Day 3 Antananarivo - City Tour

This morning, after breakfast, enjoy a city tour (approx. 5 hours) with your English-speaking tour guide. Depart the hotel at 09:00 and discover the upper city, where you will see many buildings and architecture dating from the colonial period, followed by a visit to the Photography Museum, where you can learn more about Antananarivo history. Continue with a visit to the handicraft market, where local products can be sourced. These markets are also a great place to purchase holiday souvenirs. The rest of the day is yours to spend at leisure, explore the city, enjoy the hotel facilities or take a dip in the swimming pool.

Overnight: IBIS Hotel or Similar

Meals included: Breakfast

Day 4 Antananarivo – Diégo - Montagne d'Ambre

This morning, be transferred to the airport for your flight to Diégo. Enjoy a full-day exhibition inside this magnificent park, nestled near the northern tip of Madagascar. The National Park boasts a huge tropical rainforest with endemic fauna and flora, luxuriant vegetation, beautiful waterfalls and volcanic lakes. Enjoy a 4-5 hour walking expedition through the park, during which you will discover many species of birds, frogs and lemurs. Later in the afternoon, be transferred back to your hotel for an evening at leisure. Please note: You can order a packed lunch with the hotel the day prior for your National Park visit (approx. €13 Euro). Your tour leader can assist you with this.

Overnight: Allamanda Hotel or Similar

Meals included: Breakfast; Dinner

Day 5 Diégo – Andrafiamena

Today leave Diégo and drive to Andrafiamena village (approx. 99km). Upon arrival, enjoy a meal and an afternoon visit in the protected area of Andrafiamena Andavakoera. This site shelters the famous Propithecus Perrieri, also known as the black lemur. Other species such as Eulemur Coronatus (Crowned lemur), Eulemur Sanfordi (Sanford's brown lemur), Microcebus Tavaratra (Northern rufous mouse lemur) and Lepilemur Septentrionalis (Northern sportive lemur) are also present in the area. After the visit, be transferred back to your hotel before embarking on a guided evening walk to spot more fascinating night wildlife.



14-DAY TOUR PACKAGE | MADAGASCAR WILDLIFE TOUR

The Itinerary

Overnight: Black Lemurs Camp or Similar
Meals included: Breakfast; Lunch; Dinner

Day 6 Andrafiamena

Today, spend some more time exploring the breathtaking Andrafiamena village, at 746 square kilometers, this is a reasonably substantial conservation area that features both transition forest and deciduous dry forest, including some impressive limestone formations and exciting caves. The gorgeous Perrier's black sifaka is one of the world's 25 most endangered primates. Yet here in Andrafiamena they are usually quite easy to find thanks to the fact that researchers have managed to habituate at least two groups.

Overnight: Black Lemurs Camp or Similar
Meals included: Breakfast; Lunch; Dinner

Day 7 Andrafiamena - Antsaravibe

Today, leave Andrafiamena behind and continue to Antsaravibe passing through local villages (approx. 40km) and enjoying a lunch stop on the way (not included). The next tours are designed especially for the guests of Iharana Bush Camp by the Speleologist Jean Claude Dobrilla. Marvel at the sunset with astonishing views whilst sipping an "apero" (drink). There is a private path leading to a panoramic view point to leave you with everlasting memories. Don't forget your camera!

Iharana Bush Camp:

Iharana Bush Camp is a rustic eco-lodge set amid the striking landscapes of the Tsingy formations and nearby lakes. The camp features natural cottages built from local materials and is designed for true immersion in nature, with minimal technology

— limited power, no air-conditioning, Wi-Fi or charging ports, allowing guests to fully disconnect and enjoy the surrounding wildlife and serene environment.

Overnight: Iharana Bush Camp or similar
Meals included: Breakfast; Dinner

Day 8 Antsaravibe

This morning, enjoy a tour of the Tsingy National Park, a nature reserve located on the Western coast of Madagascar. The endemic ecosystem of the Ankarana Tsingys will reveal itself to you in this thrilling experience. You will have the opportunity to see lemurs, butterflies, birds, colourful flora, invertebrates and much more. After the national park, enjoy a tour of the Mandresy Cave with your tour leader. Before viewing the caves, stroll for 20 minutes through the Ankarana Villages witnessing the Madagascar way of life and enjoying the unique landscapes. When you reach the Mandresy Cave, you will be provided with a cap lamp which will be needed for exploring these magnificent caves. A track has been designed to make the caves easily accessible. The wildlife you will see is like no other. Have the privilege to see blind fish and the famous fruit bats of Madagascar, named the 'Roussette'. Marvel at the different shapes and sizes of the stalagmites and cavities. This magical place will leave you with everlasting memories. Don't be surprised if you come across some cooking utensils, cooking pots and glasses as the caves were used as shelter by the Ankarana people. Enjoy the rest of the day at leisure and make the most of the bush camp facilities.

Overnight: Iharana Bush Camp or Similar
Meals included: Breakfast; Dinner

Offer available for a limited time or until sold out. TRIP A DEAL PTY LTD: 50149240433

Updated: 10 Apr 2026 16:49:41

Have a question about this deal? We're here to help.
Call our friendly team on 1300 158 912



14-DAY TOUR PACKAGE | MADAGASCAR WILDLIFE TOUR

The Itinerary

Day 9 Antsaravibe – Ankify – Nosy Be

After an early breakfast, check out of the Iharana Bush Camp and continue north on the National Road N°6 to Ankify village (170 km). Embark on a relaxing one-hour cruise from Ankify to the beach destination of Nosy Be. Nosy Be is a beautiful island with crystal clear waters and sandy beaches off Madagascar's northwestern coast. It is also home to a range of lemurs and reptiles. It is the largest and most popular tourist destination in Madagascar due to its stunning natural beauty, rich marine life, and tropical climate. Upon arrival in Nosy Be, be transferred to your hotel and enjoy the rest of the day at leisure.

Overnight: Loharano Hotel or Similar
Meals included: Breakfast; Dinner

Day 10 Nosy Be

Enjoy a day at leisure in Nosy Be, relax on the beach, take a dip in the pool, browse the market stalls or choose to embark on an optional excursion, which can be organised directly through your hotel. Optional activities include boat trips to the nearby islands, snorkelling, diving or fishing (not included).

Overnight: Loharano Hotel or Similar
Meals included: Breakfast; Dinner

Day 11 Nosy Be

There is never enough time to explore this beautiful island. Enjoy another day at leisure. The island is surrounded by coral reefs, making it a fantastic spot for snorkelling and diving. The region is rich in marine biodiversity, and you can find various species of fish, turtles and other marine life. The Malagasy culture is prevalent on the island, and you can experience it through local markets, traditional music and dance performances, and interacting with the friendly locals.

Overnight: Loharano Hotel or Similar
Meals included: Breakfast; Dinner

Day 12 Nosy Be - Antananarivo

Today, you will be transferred to Nosy Be Airport in time for your flight back to Antananarivo. Upon arrival, you will be transferred to your hotel. Enjoy the remainder of the day and evening at leisure.

Overnight: IBIS Hotel or similar
Meals included: Breakfast

Day 13 Antananarivo, Madagascar - Australia (or New Zealand)

Today, be transferred to the airport in time for your international flight back home.

Meals included: Breakfast; In-Flight

Day 14 Arrive in Australia (or New Zealand)

Please note: Some guests may arrive +1 day.



14-DAY TOUR PACKAGE | MADAGASCAR WILDLIFE TOUR

Tour Inclusions

HIGHLIGHTS

Enjoy a city tour of Antananarivo, the capital city of Madagascar

Discover Antananarivo's upper-city, showcasing architecture dating back to the colonial period

Enjoy a full-day exhibition inside Amber Mountain National Park

Experience tropical rainforests, beautiful waterfalls and volcanic lakes

Search for the native wildlife of Madagascar, including chameleons, tenrecs, fossa, aye-aye and the Madagascar Flying Fox

See the protected area of Andrafiarana Andavakoera, home to the Propithecus perrieri, the black lemur

Enjoy a guided evening walk to spot wildlife that can only be discovered at night

Look out for lemurs, butterflies, birds, various colourful flora, invertebrates and much more in Tsingy National Park

Witness panoramic views that will leave you with everlasting memories

Look for other species such as Eulemur Coronatus (Crowned lemur), Eulemur Sanfordi (Sanford's brown lemur), Microcebus Tavaratra (Northern rufous mouse lemur) and Lepilemur Septentrionalis (Northern sportive lemur)

Enjoy a tour of the Mandresy Cave

Keep your eyes peeled for blind fish and the famous fruit bats of Madagascar

Enjoy three nights at leisure in Nosy Be, renowned for its pristine beaches with white sands and clear turquoise waters

FLIGHTS

Return international full-service flights (economy class), departure city surcharges may apply

Two internal flights (economy class) from Antananarivo to Diego, and Nosy be to Antananarivo

ACCOMMODATION

11 nights of accommodation in 3 to 4-star hotels and permanent bush camps/lodges

DINING

21 meals, including daily breakfast

ESSENTIALS

English-speaking tour leader from Day 2 to Day 9

Airport taxes and surcharges

TRANSPORT

Transportation by air-conditioned vehicles

TRANSFERS

All transfers as mentioned in the itinerary

Offer available for a limited time or until sold out. TRIP A DEAL PTY LTD: 50149240433

Updated: 10 Apr 2026 16:49:41

Have a question about this deal? We're here to help.
Call our friendly team on 1300 158 912

6

FREQUENT
FLYER



Trip
aDeal

Important Information

**Please note: All information provided in this brochure is subject to both change and availability. Prior to purchase please check the current deal for up-to-date information. If you have already purchased this deal, the terms and conditions on your Purchase Confirmation apply and take precedence over the information in this brochure.*

Booking Information

After purchase, you will receive a receipt and a Purchase Confirmation, directing you to an online Passenger Information Form. You must complete the Passenger Information Form within 72 hours of purchase.

Any special requests, preferences and optional extras MUST be clearly stated in your Passenger Information Form. Any change requested after submitting your Passenger Information Form cannot be guaranteed, is strictly subject to availability and will incur surcharges as outlined in the Schedule of Fees below.

On purchasing this Travel Offer, you are bound by the [General Terms and Conditions](#) and the specific terms and conditions outlined in this Important Information.

Please note: All countries and territories have different entry requirements in relation to vaccinations, quarantine/isolation periods and travel restrictions. Due to the evolving nature, we would ask all of our customers to monitor, meet and adhere to the specific requirements of their intended destination(s) in the lead-up to and immediately before travel, as well as any requirements post-travel upon their return.

Our Policies

Cancellation & Refund Policy

By placing a booking with us, you acknowledge the following important information:

- **we act as your booking agent:** TripADeal is a booking services provider, and curates the Travel Offers available on our website. We act as your booking agent, and we receive payment for the Booking Services as part of the booking price, however, we do not provide any of the

Travel Services (flights, accommodation, tours or other products or services) included in your booking – the Travel Services are provided by a number of third party Travel Suppliers.

- **each booking is unique:** our Travel Offers are made up of a variety of different components and are, during the booking process, uniquely tailored to suit your requirements, for example, departure dates and ports, flight and room upgrades, tour inclusions, etc.
- **changes/modifications to your booking may not be possible:** once your booking has been made, changes or modifications may not be possible, and where possible, may incur a fee. It is important to ensure that the information you provide during the booking process is accurate and up to date, and that you read the Travel Offer carefully before placing your order.
- **Travel Offers are a package:** our Travel Offers have been curated into package offerings and must be used as a package – individual components cannot be used independently of the full package offering.
- **our Travel Offers are generally non-refundable:** in order to provide great value Travel Offers, we work with a variety of Travel Suppliers to find the best deals – this often means the Travel Suppliers' offerings are non-refundable to ensure the best price. We recommend that you obtain travel insurance as soon as you make a booking with us.

To read more about our Cancellation and Refund Policy, please click [here](#).

General Terms and Conditions

By placing your booking with us, you acknowledge and agree to our [Terms & Conditions](#), [Privacy Policy](#) and [Cancellation Policy](#).

Offer Essentials

This travel offer is valid for travel on selected dates until the 19th October 2026.

This travel offer is priced per person based

on a twin share.

Single Traveller Supplement

For solo travellers, a mandatory single supplement applies:

- Standard Package: \$1,300

Please note: Accommodation for single customers who are travelling on a tour or cruise package may be in a single room, depending on availability.

Departure Dates

See checkout for live dates and availability.

Flights

Departure Cities

Sydney, Melbourne, *Brisbane, Perth, *Adelaide or *Auckland.

Departure City Surcharges

- Brisbane: \$250 per person
- Adelaide: \$550 per person
- Auckland: \$850 per person

International Flights

- Cabin Class: Economy Class

Please note: We cannot accommodate one-way flights. Travellers must take all included flights within the package, and any flights intentionally forfeited will result in later flights being subject to cancellation.

Additional Flights

Standard Itinerary

- Cabin Class: Economy Class
- Route: Antananarivo - Diego / Nosy be - Antananarivo

Extension Itinerary

- Cabin Class: Economy Class
- Route: Antananarivo - Diego / Nosy be - Antananarivo
- Route: Antananarivo - Mauritius

Missed Flights

If you fail to arrive for your outbound flight, you risk all flight and land arrangements in your destination being automatically cancelled by the airlines and land operator, respectively. Additional fees may apply to reinstate these services. If

Important Information

you will miss your flight for whatever reason, please contact us as soon as possible to make arrangements.

Preferred Airline Surcharge

Not available

Arrive Early & Stay Behind Options

Fly out and return home up to 60 days pre and post your tour dates.

Arrive Early

Antananarivo, Madagascar - From \$300 per person, subject to availability.

Stay Behind

Antananarivo, Madagascar - From \$300 per person, subject to availability.

Please note:

• Exclusions:

This fee does not include extra nights' accommodation, meals or airport transfers.

• Internal Flights:

If you select to Arrive Early or Stay Behind in a city other than the one where the tour starts or ends, the package will include an internal flight to your destination. If you wish to forfeit this flight, please advise our friendly team at the time of purchase. Please note that the cost does not change when you choose to forfeit your connecting flight.

• Cancellations & Changes:

Flight booking changes or cancellations after air tickets have been issued are not guaranteed and may incur additional fees and fare difference, subject to the airline cancellation and change policies. Flight changes are subject to availability at the time of booking.

• High-Season:

A high-season Arrive Early or Stay Behind can be purchased for an additional charge, subject to availability. For pricing, please refer to the cart.

• + 60 days:

You can fly out up to 60 days before your package's start date, and/or return home 60 days after your package's end date. Should you wish to fly out or return home for more than 60 days from the tour, please contact us to request availability. Additional costs may apply.

• Estimated dates:

Your estimated departure, return, and arrival dates are all subject to availability and may vary. The confirmed schedule for all flights will be provided when you receive your flight tickets.

• High season surcharges apply to flights departing between the below date ranges:

3 April 2026 - 20 April 2026
26 June 2026 - 17 July 2026
18 September 2026 - 9 October 2026
12 December 2026 - 26 January 2027
3 April 2026 - 20 April 2026
26 June 2026 - 17 July 2026
18 September 2026 - 9 October 2026
12 December 2026 - 26 January 2027

Stopover Packages

Not available

Flight Class Upgrades

Not available

Domestic Flight Information

Baggage allowance per person

1 x 20kg of checked baggage
1 x 7kg of carry-on baggage

Accommodation

Accommodation Used

Standard Package

3 & 4-Star Properties (Self-Rated)

- Antananarivo: IBIS Hotel
- Montagne d'Ambre: Allamanda Hotel
- Andrafiarena: Black Lemurs Camp
- Antsaravibe: Iharana Bush Camp
- Nosy Be: Loharano Hotel

Please note: Accommodation/rooms offered are based on a lead-in room type and are subject to availability based on seasonality. In

the instance a property is not available, a similar standard of accommodation will be provided. Properties will be confirmed and included in your travel pack, which you will receive 4-6 weeks before travel.

Extra Nights

Not available

Maximum Room Capacity

2 people

Child Policy

- No child discounts. The full price applies to all children travelling with their parents.
- Valid for children 12 years old and over.

Please note: Children must be accompanied by a responsible adult 18 years old and over to travel. No unaccompanied minors are allowed.

Triple Share

Not available

Bedding Configuration

Double or twin bedding (subject to availability).

General Information

Minimum group size 4, maximum group size 18 per vehicle.

Exclusions

- Visa fees and requirements
- Domestic transfers and flights not stated in the deal offer
- Meals/beverages not stated in the deal offer
- Gratuities/tipping
- Optional activities/tours
- Personal expenses
- Travel insurance
- City Tax

Other Important Information

TOUR GUIDE VS. TOUR LEADER

Tour Guide

Often locals with intimate knowledge of an area, its culture, and history. Their role

Important Information

entails providing commentary, routing the tour, and seeing that people have a good time. They are a licensed, qualified expert who supplies specific information on the history, art, architecture and culture of the city/village/attraction where they are guiding the tour. The guide meets the group at the required place and leaves it at the end of the tour; they do not travel with the group.

Tour Leader

An experienced person tasked with ensuring the smooth operation of tours, as well as providing practical support to passengers throughout the whole trip. Their role primarily includes assisting with accommodation, transportation between locations, and communication with tour guides at each stop. A tour leader may provide general guidance around a city or village and offer information on the place visited on the bus. However, they are not required to have specific art, architecture, or historical knowledge. They are not allowed to provide a guided tour or commentary of a city/village/attraction once there and, if caught doing so, can be fined.

Please note: Tour leaders/guides are not a standard inclusion in all travel offers. Tour leaders/guides will only be made available when required to enhance the experience of the destination featured.

CLIMATE & AVERAGE TEMPERATURES

Madagascar

Madagascar has a warm tropical climate. The dry season runs from April to November. Temperatures in this season average highs of 27°C and lows of 19°C.

FLIGHTS

Seat Selection & Frequent Flyer Points

We do not arrange seat selection. It is essential to highlight that some airlines do not allow pre-selected seats. We strongly suggest you contact the airline directly with seating allocation requirements and/or arrive at the airport earlier to arrange your seating. While we do not add

frequent flyer member details to bookings, you can do this directly with the airline once you have your flight information.

Passport Validity

Customers must provide valid passport details either at the time of purchase or no later than 45 days before the departure date. Failure to do so may result in the cancellation of the booking. Customers will be responsible for any costs and fees incurred in this instance.

COACH TOUR

Meals

For meals not included, the tour leader (when available) will offer assistance with reservations, suggestions and directions to local restaurants. It is your responsibility to notify us of any dietary requests/requirements.

Please note: We will do our best to meet your requests/requirements; however, we cannot guarantee that we will always be able to.

Luggage

You will be responsible for all your personal belongings whilst on tour. You must carry your own luggage from the vehicle to the hotel room and back to the vehicle. The driver will assist with the uploading and unloading of bags from the vehicle.

OTHER

Mobility

If you require wheelchair access please contact our friendly sales and service team to inquire on your behalf.

Fitness Level Required

Adventure (and spontaneity) create some of the best travel memories. Bear in mind, your home schedules and timings might not be adhered to on tour - it's all part of the fun!

An active level of fitness will be required. Expect an active pace of travel where the focus is on adventure with no limitations. You will need to be self-reliant, physically fit and healthy to participate in fast-paced

travel, extended walking/trekking over several hours/days, navigate steep steps, slopes, rugged and uneven terrain, varying weather conditions, remote locations and higher elevations. You will be responsible for your own luggage and able to board all modes of transport without assistance. This tour is typically inaccessible to wheelchairs, mobility scooters and those requiring assistance while travelling.

Please note: If you have any concerns, please consult your healthcare provider prior to purchasing/travel.

Yellow Fever

A valid international certificate of vaccination against Yellow Fever is required in many countries. You may need to present this on arrival at the airport or border crossing. Some countries will refuse entry if you are unable to present your certificate. It's also common for your home country to request a Yellow Fever certificate upon arrival. You must check with your doctor well before leaving home about the Yellow Fever requirements for the countries you'll be visiting.

Gratuities/Tipping

Land

Gratuities (tips) are not included for the services of the tour leader (when available) and driver throughout the tour. The recommended tip is \$5-\$8 EUR per person per day. This covers the guide/leader and the driver and will be collected on tour.

Please note: Tipping for services provided is always a matter of personal discretion; however, please be aware that many locals consider tipping part of their normal remuneration, and they may approach you for payment; there's no need to be intimidated by the request.

Sightseeing

Please note: If the entrance to a site is affected by changes in operating hours or public holiday closures, your itinerary, where possible, may be adjusted, or a similar activity will be offered in its place (subject to availability).

Important Information

Wildlife

TripADeal cannot guarantee animal sightings. Wildlife are unpredictable and factors such as weather conditions, predatory fear and animal movements can impact sightings.

Shopping

Shopping overseas can be a daunting and confusing experience, especially when there is a language barrier. Please be very cautious when foreign currencies and prices are involved. If paying by credit card, please pay close attention to the amount you are being charged and keep all your receipts. Do not make any purchases you are not comfortable with or feel pressured into. If you are uncertain or need assistance with the language barrier, please seek assistance from your Tour Guide/Leader. Please refer to our [Terms and Conditions](#) regarding shopping for further information.

Visas

Madagascar

A tourist visa is a strict requirement when travelling to Madagascar on an Australian or New Zealand passport. The Short Stay (up to 30 days) tourist visa can be acquired on arrival in Madagascar. A valid Yellow Fever Vaccination Certificate is requested on arrival in Madagascar for all travellers arriving from a yellow fever-infected area/country. The World Health Organisation (WHO) provides a list of countries where yellow fever is endemic.

<http://www.who.int/ith/diseases/yf/en/>

Important:

- *Please start arranging your visa three weeks before departure to account for any delays due to consulate operating hours.*
- *Visa rules may have changed since Covid-19. Some countries and airlines may require you to obtain an additional visa before arrival. Please check with the nearest embassy, consulate or immigration department of the destination you're entering.*

Please note:

- *Passengers who are not Australian citizens must also check with the respective consulate or visa agency to determine what their visa requirements are and what personal identification is required.*
- *It is also important to note that some areas of employment, such as journalism, government authorities and charity organisations, may have additional restrictions in applying for visas. This may, in turn, affect the type of application required.*

Travel Insurance

Embarking on your next trip is exciting, and while you hope the unexpected does not happen, it is best to be prepared. We strongly recommend you take out travel insurance when making your booking. Whether it's a potential medical emergency, a flight cancellation, a delayed suitcase, or an unforeseen event, it's important to ensure you're adequately protected. For more information or advice visit <https://www.tripadeal.com.au/travel-insurance>

Schedule Of Fees

Voluntary Changes

This includes booking changes requested by you, including but not limited to those changes requiring an airline ticket or a Purchase Confirmation reissue.

- Changes - \$100 AUD per booking and any additional charges applied by the airline/cruise company/accommodation/other travel providers.

Name Changes Due To Passenger Error

If the incorrect name has been provided, charges of \$100 AUD per booking and any additional charges applied by the airline/cruise company/accommodation/other travel providers.

Supplier Fees

In the event the tour package you have purchased is unable to proceed, and/or a travel Supplier is unable to fulfil the tour due to external circumstances (Limitation of Liability e.g. a Force Majeure event),

there may be a fee or amount of money that is withheld by our Suppliers and is unrecoverable. This may be due to non-refundable airline tickets, cancellation penalties with cruise cabins or unrecoverable payments with our land/accommodation partners. If refunds are not available from Suppliers, we will endeavour to obtain a travel credit on the best terms available and communicate these outcomes to you. In the event we are unable to obtain a refund or travel service credit, or part thereof, this cost is passed on to the customer as a Supplier Fee.